



Herbal Formula Longteng Decoction Promotes the Regression of Synovial Inflammation in Collagen-Induced Arthritis Mice by Regulating Type 2 Innate Lymphocytes

Huijie Zhang^{1†}, Juan Liu^{1†}, Pingxin Zhang^{1†}, Dongyang Li^{1†}, Guiyu Feng¹, Meiyier Huandike¹, Song Sun¹, Limin Chai^{1*} and Jingwei Zhou^{1,2*}

OPEN ACCESS

Edited by:

Vincent Kam Wai Wong,
Macau University of Science and
Technology, Macao SAR, China

Reviewed by:

Xiaohui Su,
China Academy of Chinese Medical
Sciences, China
Yao Xiao,
Macau University of Science and
Technology, Macao SAR, China

*Correspondence:

Limin Chai
liminchai@hotmail.com
Jingwei Zhou
13910634708@163.com

[†]These authors have contributed
equally to this work and share first
authorship

Specialty section:

This article was submitted to
Ethnopharmacology,
a section of the journal
Frontiers in Pharmacology

Received: 17 September 2021

Accepted: 29 November 2021

Published: 23 December 2021

Citation:

Zhang H, Liu J, Zhang P, Li D, Feng G,
Huandike M, Sun S, Chai L and Zhou J
(2021) Herbal Formula Longteng
Decoction Promotes the Regression of
Synovial Inflammation in Collagen-
Induced Arthritis Mice by Regulating
Type 2 Innate Lymphocytes.
Front. Pharmacol. 12:778845.
doi: 10.3389/fphar.2021.778845

¹Key Laboratory of Chinese Internal Medicine of Ministry of Education and Beijing, Dongzhimen Hospital, Beijing University of Chinese Medicine, Beijing, China, ²Department of Rheumatology, Dongzhimen Hospital, Beijing University of Chinese Medicine, Beijing, China

The etiology and pathogenesis of rheumatoid arthritis (RA) have not yet been fully elucidated, with greater adverse drug effects in traditional treatment of RA. It is particularly necessary to develop and study Chinese herbal formula as a supplement and alternative drug for the treatment of RA. The traditional Chinese medicine compound Longteng Decoction (LTD), as an empirical prescription in the treatment of RA in Dongzhimen Hospital of Beijing University of Chinese Medicine, has been widely used in clinic. Type 2 innate lymphocytes (ILC2s) have specific transcription factors and signature cytokines that are very similar to Th cells, which have been proved to be necessary in addressing RA inflammation, and are potential targets for RA prevention and treatment. Our previous studies have confirmed that LTD can intervene in the differentiation of peripheral blood Th17 and Treg cells, reduce joint pain index and swelling degree, shorten the time of morning stiffness, reduce ESR, and inhibit joint inflammation. However, it is unclear whether LTD can promote the regression of RA synovial inflammation by regulating the immune response mechanism of ILC2s. Therefore, our team established a collagen-induced arthritis mouse model and conducted an experimental study with LTD as the intervention object. The results showed that joint swelling, synovial inflammatory infiltration, and articular cartilage destruction were alleviated in CIA mice after intervention with LTD. The proliferation and differentiation of Th17 inflammatory cells and the secretion of proinflammatory cytokines (IL-17 and IFN- γ) were inhibited. In addition, LTD can also activate ILC2s to secrete the anti-inflammatory cytokine IL-4, activate the STAT6 signaling pathway, and act synergistic with Treg cells to inhibit the infiltration of type M1 macrophages in synovial tissue and promote its transformation to M2 phenotype. Taken together, these results confirm that LTD can be used as an adjunct or alternative to RA therapy by modulating the ILC2s immune response network and slowing down the inflammatory process of synovial tissue.

Keywords: Longteng Decoction, rheumatoid arthritis, type 2 innate lymphocytes, synovial inflammation, STAT6 signal pathway

INTRODUCTION

Rheumatoid arthritis (RA) is a general chronic autoimmune disease with an incidence rate of 0.4–1.3% (Lin et al., 2020). The disease mainly invades synovial and joints, and its pathological manifestations include synovial hyperplasia with extensive inflammatory cells infiltration, the generation of pannus and the damage of articular cartilage, with a high disability rate (Daniel and Josef, 2018; Stefan et al., 2015). Although the detailed pathogenesis of RA are still unclear, synovial inflammation remains a major target of the disease in its mature clinical stage (Bugatti et al., 2019). Synovitis is an inflammation of the joint capsule composed of synovium, synovial fluid, and their bones (Daniel and Josef, 2018). During the development of RA, synovial membranes undergo the proliferation and activation of different immune cells, as well as inflammatory changes such as innate and adaptive immune cells infiltration (Firestein and McInnes, 2017; Orr et al., 2017). The constant immune cell activation leads to chronic inflammatory of the joints and synovial swelling, which in turn leads to synovial expansion and invasion of the periarticular bone at the cartilage-bone junction, leading to cartilage degeneration and bone invasion (Daniel and Josef, 2018).

Activation of innate immunity may be a key pathogenic mechanism of synovial inflammation (Firestein, 2003). Innate lymphocytes (ILCs) are the newly found immune cells that are not antigen-specific. It is divided into three different subunits, ILC1s, ILC2s, and ILC3s (Shikhagaie et al., 2017). It has specific transcription factors and signature cytokines that are very similar to Th cells (Yasunori et al., 2018; Guia and Narni-Mancinelli, 2020), and has been considered as an essential component of innate immunity in immune arthritis and plays an important role in recent years (MA et al., 2017; Rauber et al., 2017). Abnormal activation of ILCs (except NKs) has been proved to be a pathogenic factor of RA (Edilova et al., 2020), where ILC2s are essential and play an important role in addressing RA inflammation (Yamada et al., 2007). ILC2s are proliferated and activated after co-stimulation by IL-33 and IL-9, secreting anti-inflammatory cytokines IL-14 and IL-4, activating the STAT6 signaling pathway, and inducing macrophages to convert to M2 phenotype (Chen et al., 2019; Schmitz et al., 2005; Yasunori et al., 2018). Furthermore, it plays a synergistic effect with Treg cells in pathological tissues to inhibit the infiltration of M1 macrophages and neutrophils in synovial tissues, proliferation of Th17 cells and secretion of IL-17 (pro-inflammatory cytokine), repair the inflammatory damage of articular cartilage, slow down the inflammatory process of synovial tissues, and promote the alleviation and regression of joint inflammation (Rauber et al., 2017).

The JAK/STAT signaling pathway can promote synovial hyperplasia and play a key role in the pathogenesis of RA synovitis (Ptacek et al., 2021). Studies have suggested that JAK2-STAT1/3 may be the upstream mechanism of FLS proliferation inhibition (Tamai et al., 2006). Previous studies also reported the expression of activated STAT6 and JAK3 in RA synovial tissue (Wang et al., 2012; Walker et al., 2006). STAT6 can

be activated by IL-4 and IL-13, mainly regulates Th2 differentiation, and inhibits arthritis and inhibits osteoclast differentiation (Omata et al., 2020; Omata et al., 2018). At present, JAK2 and JAK3 targeting inhibitors have been widely used in clinical treatment, but their side effects are relatively large (Lin et al., 2020). The natural ingredients in Traditional Chinese medicine have been proved to have good effects in targeting JAK2 and JAK3 to improve inflammation and arthritis (Wang et al., 2020). Therefore, exploring the regulatory effect of traditional Chinese medicine on the JAK/STAT signaling pathway may provide new strategies and new targets for the treatment of RA.

Longteng Decoction (LTD) is a Chinese herbal formula based on the theory of “healthy qi deficiency, latent pathogenic obstruction” of Chinese medicine. It is also an empirical formula for RA treatment in Dongzhimen Hospital of Beijing University of Chinese Medicine, and has been widely used in clinical practice. LTD consists of six important components: *Dioscorea nipponica*, *Honeysuckle stem*, *Sinomenium acutum*, *Paeonia lactiflora* Pall, *Artemisia annua*, and *Trachelospermum jasminoides*. It was shown that the effective component of *Dioscorea nipponica* total saponins can inhibit RA synovial inflammation by inhibiting the expression of nuclear transcription factors in fibroblast-like synovial cells, reducing synovial tissue hyperplasia and inflammatory cell infiltration (Duan et al., 2014). Moreover, it can also alleviate collagen-induced arthritis by inhibiting the Th17 cells response (Li and Zhou, 2020). In previous experiments, we also confirmed that chlorogenic acid and luteolin, the major ingredients of *Honeysuckle stem*, can inhibit FLSs inflammatory proliferation (Li et al., 2017; Nie et al., 2016; Lou et al., 2016; Lou et al., 2015). Our clinical research has also shown that (Wang Y. et al., 2021; Chen et al., 2019) LTD can reduce joint pain index and swelling degree, shorten morning stiffness time, inhibit disease progression, reduce ESR, and improve patients' quality of life. LTD can also interfere with the proliferation of Th17 and Treg cells in peripheral blood, and significantly improve hemorheology related indicators. Although LTD is well effective in the treatment of RA, there is a lack of basic experimental studies. And the specific mechanism of its action in regulating the immune response network and promoting the regression of synovial inflammation is still unclear.

Our research group found that ILC2s is a potential target for RA prevention and treatment. ILCs have specific transcription factors and signature cytokines extremely similar to Th cells. Our previous studies have demonstrated that LTD can interfere with the differentiation of Th cells. Therefore, we proposed a hypothesis that LTD can inhibit abnormal immune response, maintain environmental immune homeostasis in pathological tissues, and slow down the inflammatory process of synovial tissues by regulating the ILC2s immune response network, which is the key effecting mechanism in the treatment of RA inflammation. In this research, collagen-induced CIA mice as an animal model and LTD was used as an intervention measure to explore the possible mechanism of LTD regulating ILC2s, providing evidence for LTD as an effective herbal formula for RA treatment.

MATERIALS AND METHODS

Preparation of the Herbal Medicine and HPLC-ESI/MSn Analysis

LTD comprises six herbs: 50 g Chuan Shanlong (*Dioscorea nipponica*), 30 g Ren Dongteng (Honeysuckle stem), 25 g Qing Fengteng (*Sinomenium acutum*), 25 g Sheng Baishao (*Paeonia lactiflora* Pall), 25 g Qing Hao (*Artemisia annua*), 30 g Luo Shiteng (*Trachelospermum jasminoides*). The herbs were provided by the Pharmacy Department of Dongzhimen Hospital of Beijing University of Chinese Medicine. After decocting in water, they were heated and concentrated. And the liquid was stored in a refrigerator at 4°C for later use.

Based on the method we described earlier, the composition of LTD was determined using HPLC-ESI/MSn (Li et al., 2017). The TripleTOF™ 5600 Liquid Chromatography High Resolution Tandem Mass Spectrometer (SCIEX, United States) was used to analyze the data including signal intensity and retention time.

Animal Groups and Treatments

A total of 40 DBA/1 male mice aged 7–8 weeks (weight 18 ± 2 g) were purchased from Beijing Weitong Lihua Laboratory Animal Co., Ltd. (Beijing, China). All mice were maintained in a specific pathogen-free animal facility at the Dongzhimen Hospital of Beijing University of Chinese Medicine and allowed access to food and water ad libitum. This study was approved by the Animal Ethics Committee of the Beijing University of Chinese Medicine and the management and use requirements of the experimental animal ethics committee of Dongzhimen Hospital of Beijing University of Traditional Chinese Medicine were strictly followed during the experiment. After 7 days of adaptive feeding, 8 mice were randomly selected as the blank group and the remaining 32 mice were used for CIA modeling.

CIA induction was performed as previously described (Deng et al., 2012). Briefly, it was emulsified with 100 µg of bovine type II collagen (CII) and the same amount of complete Freund's adjuvant (CFA), and immunization was given to the base of the tail of the mouse. Then, a boost immunization of CII emulsified in incomplete Freund's adjuvant (IFA) was carried out on the 21st day after the first immunization. A total of 28 mice were successfully modeled (incidence rate 87.5%). After the successful establishment of the model, 24 mice were freely divided into model group, LEF group, and LTD group ($n = 8$ mice/group). Mice were treated with drug intervention after 7 days of enhanced immunity. The dose was estimated based on the clinical dose of RA patients and the exchange algorithm of human-mouse body surface area. Mice in the LEF group were intragastrically administered LEF (No.H20080047, Suzhou Changzheng-Xinkai Pharmaceutical Co., Ltd., China) at a dose of 3 mg/kg/d. Mice in the LTD group were intragastrically administered LTD at 27.75 g/kg/d. The normal group and model group were given the same volume of normal saline. Mice were given intragastric administration once a day for 28 consecutive days, and were sacrificed on the 29th day after treatment. The sagittal plane of the radius of the hind limb of the mice was taken every 7 days after the enhanced

immunization, and the thickness of the metatarsal joint of the hind limb of the mice was measured with a 50-cell vernier caliper.

Arthritic Severity Scores of Collagen-Induced Arthritis

The arthritic severity scores of CIA were observed every 7 days after the booster immunization. The specific grading is based on our previously described method (Li et al., 2017). The arthritis score is the sum of all diseased joints of each mouse, and the highest score is 16 points.

Histopathologic Analysis

The right hind limbs of all mice were taken and placed in 4% paraformaldehyde solution and fixed overnight at 4°C. Next, the excess fur and muscles of the mouse were completely removed, the toe joints were stripped, soaked in 10% EDTA decalcification solution, embedded in paraffin, and cut into 5 µm thickness. These sections were deparaffinized with xylene and rehydrated with gradient ethanol. Then, they were stained with hematoxylin-eosin (HE), Tartrate-resistant acid phosphatase (TRAP), and safranin O fast green (Safranin O) respectively. The stained tissues were observed and photographed using a light microscope (DM RAS2, Leica, Solms, Germany). Histopathological changes in synovial inflammation, cartilage destruction, and bone erosion were assessed and scored according to previously reported methods (Feng et al., 2019). The scores of Loss of safranin O staining were defined as follows (Rauber et al., 2017): no loss (0 score); slight loss (1 score); moderate loss (2 score); severe loss (3 score); complete loss (4 score).

Flow Cytometric Analysis

The joint synovial tissues were collected from all mice and single-cell suspensions were prepared. Cell Stimulation Cocktail (500X, eBioscience) and Protein Transport inhibitor were added to single-cell suspension cells, strictly following the instructions. The cells were stimulated in a cell incubator at 5%CO₂ and 37°C for 5 h. After stimulation, 1×10^6 cells were inoculated into v-type 96-well Microtiter plate preadded with 100 µL labeling buffer, and specific antibodies labeled the antigens on the cell membrane. The eBioscience™ Intracellular Fixation and Permeabilization Buffer Set were applied to fix the membrane of cells. Foxp3 staining buffer set (eBioscience) was used to dilute specific antibodies and tag cytoplasmic and intranuclear factors. Cells were incubated with the following antibodies: FITC anti-CD4, PE/CY7 anti-IL17A, PE anti-44, PE/CY7 anti-CD25, PE anti-KLRG1, and APC anti-Ki67 (all from BioLegend). Anti-FoxP3 and anti-62L were purchased from eBioscience. Anti-CD127(IL7Ra) and anti-CD278(ICOS) was purchased from miltenyi. 5-Laser/21-Channel Flow Cytometer System (Gallios, Beckman Coulter) was used to detect the number and ratio of relevant cells. The results were analyzed using Beckman's proprietary software Version1.5.

Immunofluorescence Analysis

The dewaxed tissue sections were alternately placed in citric acid buffer and heated to boiling point for antigen repair for 20 min, and then returned to room temperature. The cells were permeated with PBS which contained 0.3% Triton X-100 for 20 min. These slices were closed with 3% Donkey serum and incubated in an incubator for 30 min. The specific fluorescent antibody was incubated overnight at 4°C and the fluorescent secondary antibody was incubated for 1 h. Primary antibodies anti-F4/80 antibody (1/100, abcam), anti-iNOS antibody (NOS2) (1/100, abcam), and anti-CD206 (MMR) monoclonal antibody (MR6F3)-PE (1/50, invitrogen) were utilized. For anti-F4/80, anti-iNOS and anti-CD206 staining, donkey anti-rabbit (1/500, Alexa 488, abcam), goat anti-rabbit (1/500, Alexa 647, Invitrogen), and donkey anti-goat (Alexa Fluor® 555) secondary antibodies were used. After antibody incubation, anti-fluorescence quenching sealing tablets (including DAPI) were added to seal the tablets. Images were collected and analyzed by laser confocal microscopy system (TCS SP8 X, Leica). Immunofluorescent antibody markers were matched with protocols provided in the relevant literature (Yu et al., 2016). F4/80⁺CD206⁻iNOS⁺ cells were M1-type macrophages, and F4/80⁺CD206⁺ iNOS⁻ cells were defined as M2-type macrophages.

ELISA Analysis

The ELISA kit (eBioscience) was used to detect the contents of IFN- γ , IL-17, and IL-4 produced in RA following the instructions strictly.

Western Blotting Analysis

Proteins for western blot analysis were extracted from the mouse joint synovial tissue and lysed using RIPA Lysis Buffer which contained protease inhibitor cocktail (Applygen Technologies Inc., Beijing). The protein concentration was quantified preliminarily with the BCA kit. The total proteins were separated using 7.5% SDS-PAGE and then imprinted on NC membrane. They were blocked for 1 h at room temperature using TBST containing 5% skimmed milk. The primary antibodies including anti-mouse Stat-6, Jak-2, Jak-3, phospho-Jak-2, phospho-Jak-3, and phospho-Stat-6 polyclonal antibodies (Abcam, Cambridge, MA, United States) were incubated overnight at 4°C. Next, the membranes were incubated by secondary antibodies (1:2000, Abcam, Cambridge, MA, United States) for 1 h and were treated with ECL chemiluminescence reagents. Three replicates of each experiment were performed. Densitometry plots showing protein expression were analyzed by ImageJ (Bethesda, United States). The housekeeping gene GAPDH was used as an internal reference.

Statistical Analysis

SPSS (version 20.0) statistical software was used for data analysis. GraphPad Prism (version 8.0) software was used for making graphics. The measurement dates conforming to the normal distribution were expressed as mean \pm standard deviation (S.D.). One-way analysis of variance (One-way ANOVA) was used for comparison between multiple groups. For pairwise

comparisons between groups, if the variance was uniform, the LSD test was used; if the variance was not uniform, the Tamhane's T2 (M) test was used. Arthritis scores and plantar joint thickness were evaluated using repeated measures ANOVA. $p < 0.05$ was considered that the difference was statistically significant.

RESULTS

Identification of Chemical Constituents in Longteng Decoction

A total of 19 main effective constituents in LTD were identified by HPLCESI/MSn. The representative chromatograms and identified compounds are shown in **Figure 1** and **Table 1**.

Longteng Decoction Ameliorates the Severity of Arthritis of Collagen-Induced Arthritis Mice

LTD can relieve joint inflammation in CIA mice and promote the regression of joint inflammation. As shown in **Figure 2A**, obviously, the redness and swelling of toes and ankles in CIA mice were significantly reduced and the inflammation was relieved after 28 days of treatment with LTD.

In addition, arthritic severity scores of CIA mice were significantly decreased after LTD treatment (**Figure 2B**). In the arthritis score (**Figure 2B**), the score of the model group was markedly higher than the normal group. From the 35th day, compared with the model group, the arthritis scores in the LTD and LEF groups were significantly reduced. We also measured the thickness of the bilateral plantar joint in CIA mice throughout the intervention cycle (**Figure 2C**). The results showed that the swelling thickness of the bilateral plantar joint of mice decreased gradually with the intervention period, and there were significant differences on both sides from the 42nd day.

Longteng Decoction Ameliorates Histopathology Injury of Joints in Collagen-Induced Arthritis Mice

There were differences in HE staining among the groups (**Figure 3A**). In the CIA model group, synovial tissue hyperplasia and massive inflammatory cells infiltration, even multiple cartilage erosion and bone destruction were observed in the joint cavity of mice (**Figure 3A**). As is shown in **Figure 3D**, the bone erosion score, synovial inflammation score, and cartilage damage score of CIA mice was notably higher relative to normal mice. Treated with LTD and LEF, the pathological inflammation of HE staining was alleviated and the pathological score was significantly decreased.

In order to further explore the effect of LTD on cartilage destruction in CIA mice, the paraffin sections of mice in each group were stained with Safranin O. As shown in **Figure 3B**, the staining intensity of CIA mice was observably weaker than that of normal mice. As indicated by the loss of Safranin O staining score (**Figure 3E**), there was a significant difference between normal mice and CIA mice. After LTD and LEF treatment, the staining

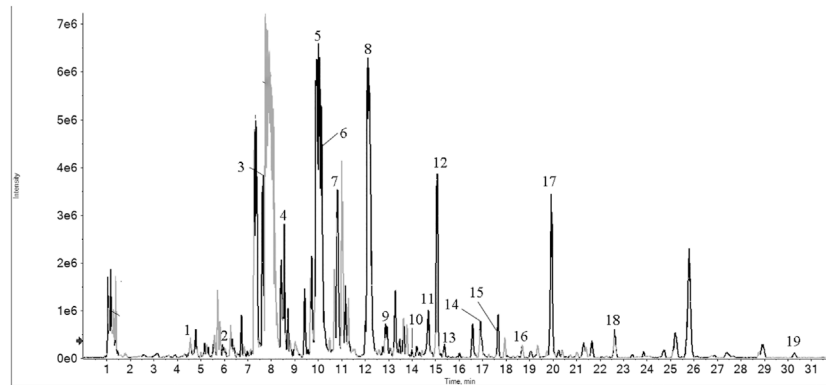


FIGURE 1 | HPLC-ESI/MSn total ion chromatograms of LTD.

TABLE 1 | Chemical components identified from LTD by HPLC-ESI/MSn.

No	Identification	Formula	Duration
1	Piscidic acid	C11H12O7	4.5
2	Oxymatrine	C15H24N2O2	5.97
3	Chlorogenic acid	C16H18O9	7.69
4	Acutumine	C19H24ClNO6	8.4
5	Magnoflorine	C20H24NO4	9.94
6	Albiflorin	C23H28O11	10.21
7	6-Methylcoumarin	C10H8O2	10.82
8	Isoscooletin	C10H8O4	12.05
9	Paeoniflorin	C23H28O11	12.96
10	Quercetin	C15H10O7	13.96
11	Sinomenine	C19H23NO4	14.61
12	Tracheloside	C27H34O12	15.07
13	Jatrorrhizine	C20H20NO4	15.34
14	Arctiin	C27H34O11	16.91
15	Luteolin	C15H10O6	17.56
16	Artemisinin	C15H22O5	18.68
17	Apigenin	C15H10O5	19.78
18	Arctigenin	C21H24O6	22.63
19	Diosgenin	C27H42O3	30.3

intensity was increased and the loss of Safranin O staining score was significantly decreased.

TRAP staining was also performed on paraffin sections of mouse ankle tissue, as shown in **Figure 3C**. The nucleus is blue-purple and the positive signal is purplish red. Compared with normal group, there were a large number of osteoclasts around the trabecular bone of model group. Compared with model group, these positive signals in all treatment groups were decreased, indicating that the differentiation of osteoclasts was inhibited to varying degrees.

Longteng Decoction Can Inhibit the Proliferation and Differentiation of Inflammatory Cells

It has been shown that human central memory CD4⁺ T cells can secrete IL-17A, IL-21, and TGF- β , through their combination to differentiate naive T into Th17 cells (Li et al., 2008). The

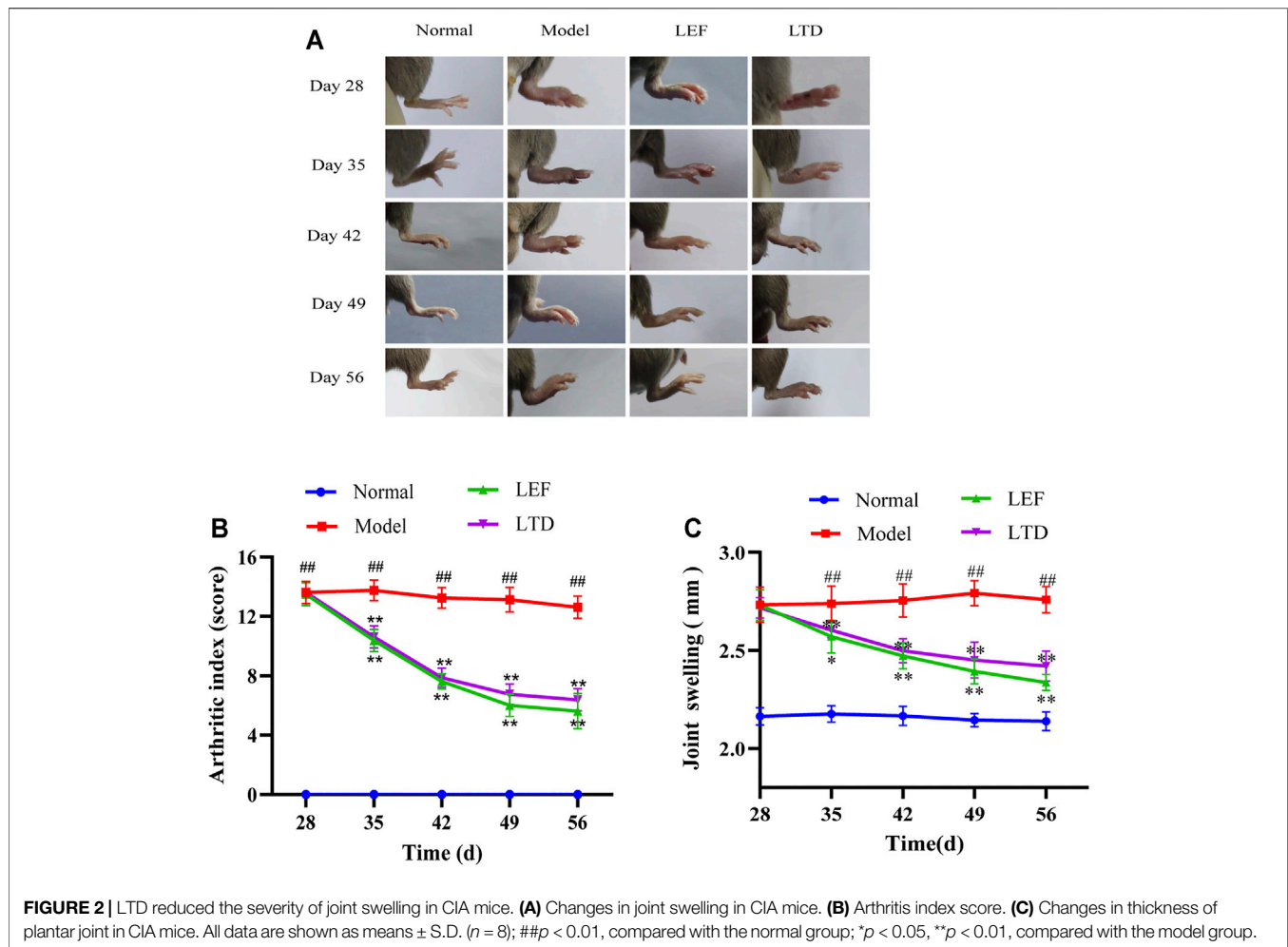
percentages of Th17, memory T, naive T, and effector T cells in lymphocytes were detected using flow cytometry. The percentages of Th17 cells (CD4⁺IL-17⁺) of CIA mice were increased significantly, and the abnormal rising of Th17 cells was obviously suppressed after LTD and LEF treatment (**Figure 4A**). We also observed that the Naive T cells (CD4⁺CD44⁻CD62L^{high}) were higher in the model group than in the other groups, while the percentage of effector T cells (CD4⁺CD44⁻CD62L^{low}) and memory T cells (CD4⁺CD44⁺CD62L^{low}) was lower than LTD and LEF groups (**Figure 4B**). After LTD and LEF treatment, the percentage of Naive T cells was decreased, and the percentage of effector T cells and memory T cells was increased. The results suggest that LTD treatment can inhibit the proliferation of Th17 cells and Naive T cells.

Longteng Decoction Can Promote the Proliferation and Differentiation of ILC2s and Treg Cells

ILC2s were found in the joint synovial tissues of healthy people. ILC2s can induce Treg cell activation and play an immunomotor role (Rauber et al., 2017). Therefore, the ratio of ILC2s and Treg cells in synovial tissue of the joints were measured by flow cytometry. As shown in **Figure 5A**, the ratio of ILC2s in the model group was lower than those in the other groups. After LTD and LEF treatment, the ratio of ILC2s was increased. In addition, the ratio of Treg cells (CD4⁺CD25⁺ Foxp3⁺) of the model group were decreased significantly, and the abnormally low levels of Treg cells were significantly increased in the drug intervention groups (**Figure 5B**). The results suggest that LTD can promote the proliferation of ILC2s and Treg cells.

Longteng Decoction Can Regulate the Expression Level of JAK-STAT Signaling Pathway Related Proteins

We also performed western-blotting to detect the expression and phosphorylation level of key protein molecules in JAK/STAT signaling pathway in synovium of the joint (**Figure 6**).



Surprisingly, our results showed that there was no statistical difference in the expression of JAK2 and JAK3 proteins and their phosphorylation levels after LEF and LTD treatment compared with the model group (Figures 6A,B). Moreover, compared to normal mice, our results also showed that STAT6 protein expression and phosphorylation were both decreased in CIA group while increased markedly in the LEF group and LTD group compared to CIA mice (Figure 6C). These data suggest that LTD inhibits the progression of synovial inflammation in RA by promoting the activation of STAT6 signals, and plays the role of inhibiting pro-inflammatory factors and activating anti-inflammatory factors.

Longteng Decoction Can Regulate the Secretion of Proinflammatory and Anti-inflammatory Cytokines

Next, we detected the 3 cytokines associated with RA by Elisa. The levels of predominant pro-inflammatory cytokines associated with our study, including IFN- γ and IL-17, were increased significantly in model groups (Figure 7A,B). After LEF or LTD treatment, the production of these cytokines was

inhibited. Moreover, the level of anti-inflammatory cytokine IL-4 was obviously reduced in CIA mice. After LTD treatment, the level of IL-4 was significantly increased (Figure 7C). These data suggest that LTD inhibits the progression of synovial inflammation in RA by inhibiting IL-17 and IFN- γ and promoting the secretion of cytokines IL-4.

Longteng Decoction Can Promote the Polarization of Anti-inflammatory M2 Macrophages in Synovial Tissue of Collagen-Induced Arthritis Mice

In order to observe M1 and M2 macrophages in the diseased synovial tissues, immunofluorescence staining was also performed. As shown in Figure 8, expressions of F4/80, iNOS, and CD206 were observed in the pathological tissues of mice. A few positive cells (F4/80⁺, iNOS⁺, and CD206⁺) were observed in the normal group. In CIA model group, F4/80 and iNOS were strongly expressed, and the distribution of macrophages was mainly M1 type. After treatment with LTD, the expression of iNOS in the diseased tissues of mice was decreased compared to CIA model group. While CD206 was gradually increased and the

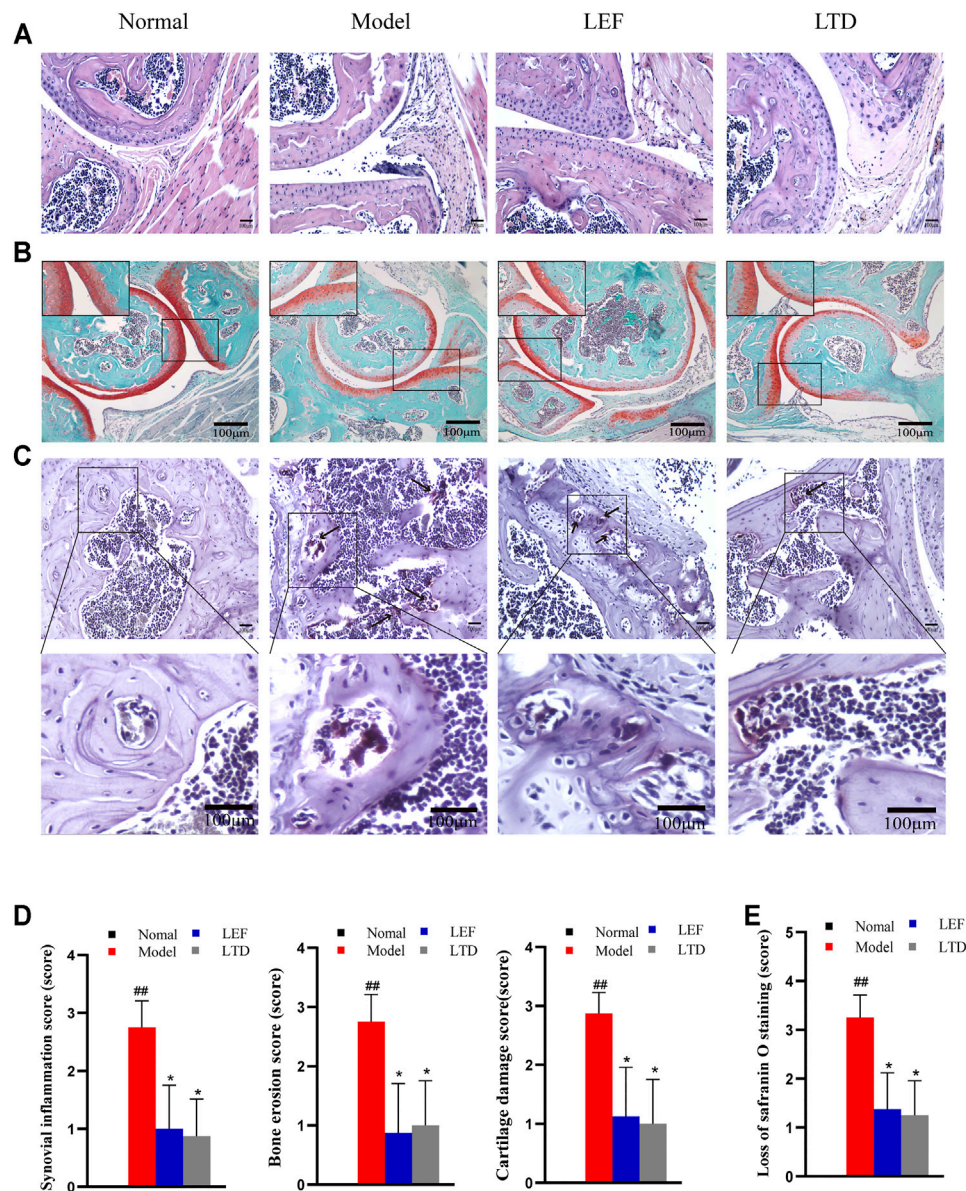


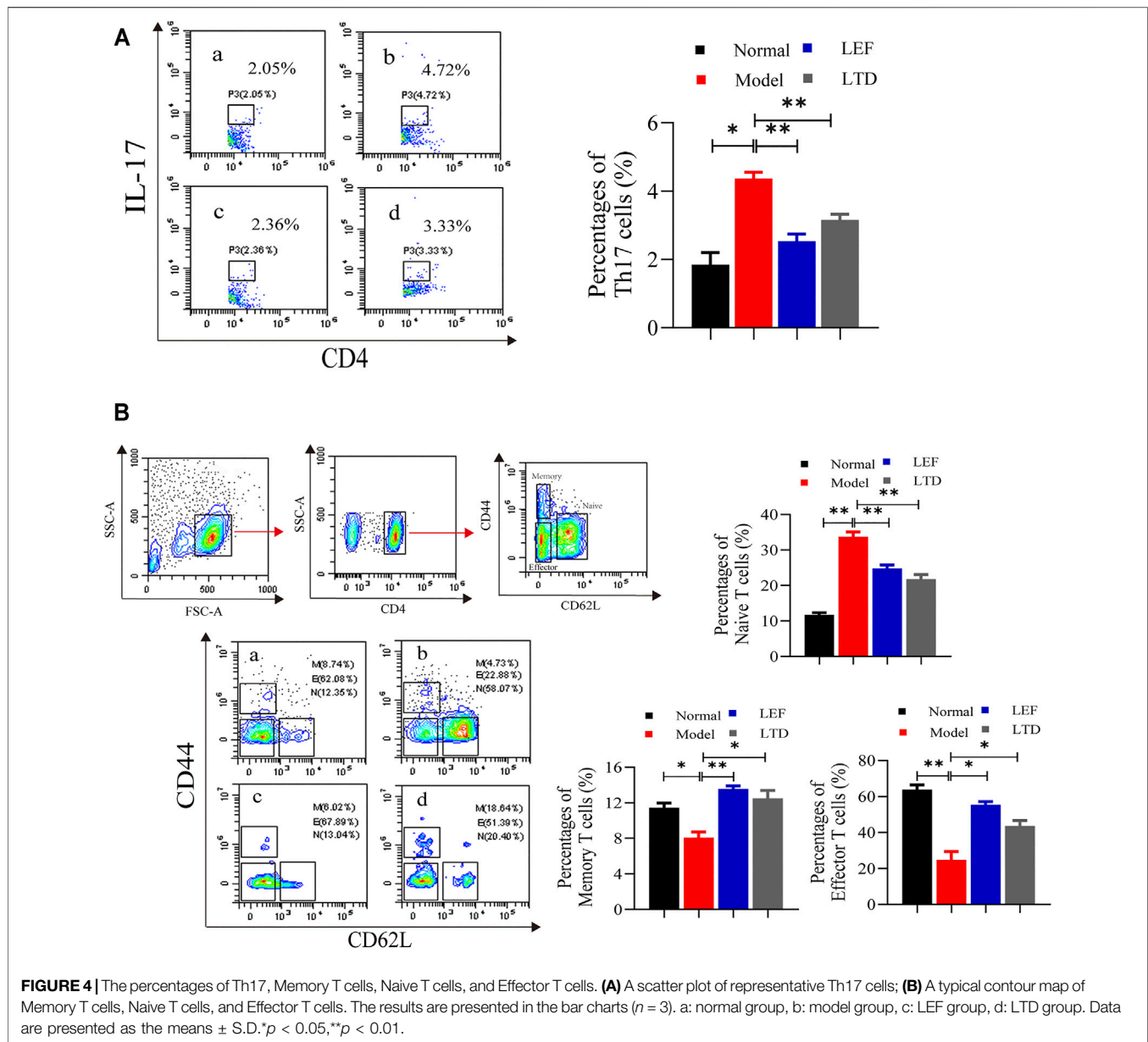
FIGURE 3 | LTD improved histopathological inflammation in CIA mice. **(A)** HE staining of synovial tissue of joint (magnification $\times 200$). **(B)** Saffron O staining of articular tissue (magnification $\times 100$). **(C)** TRAP staining of articular tissue (magnification $\times 200$). The arrow points to osteoclasts. **(D)** Synovial inflammation score, bone erosion score, and cartilage damage score. **(E)** Loss of safranin O staining score. All data are shown as means \pm S.D. ($n = 8$); ^{##} $p < 0.01$, compared with the normal group; ^{*} $p < 0.05$ ^{**} $p < 0.01$, compared with the model group. The scale bar corresponds to 100 μ m throughout.

distribution of macrophages was mainly M2 type in LTD group. The results demonstrate that LTD may exert an anti-inflammatory effect by promoting the polarization of M2 macrophages.

DISCUSSION

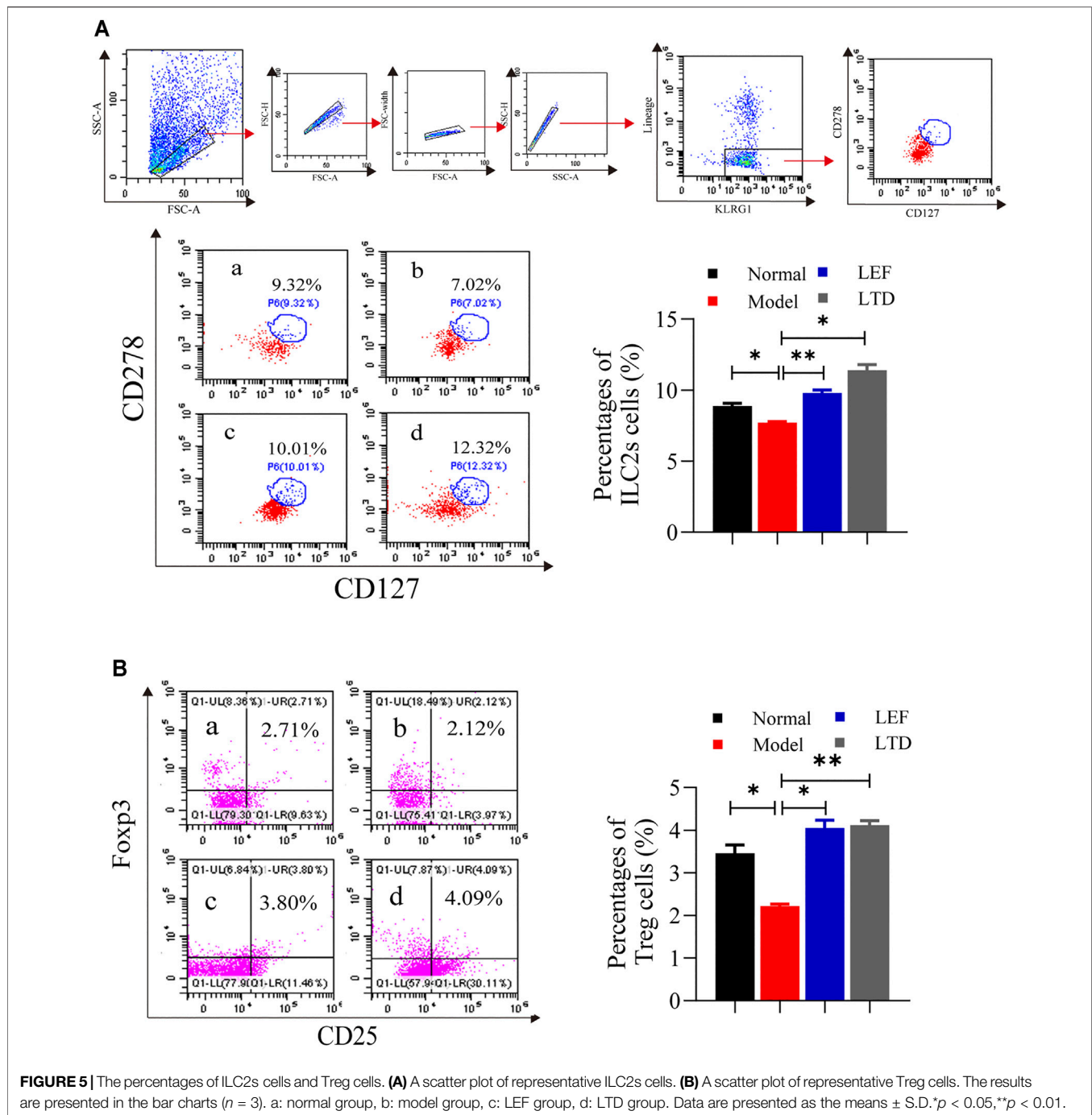
RA is a general chronic autoimmune disease which is characterized by synovial inflammation with high morbidity and disability rate (Wang X. et al., 2021). Current treatment

strategies for RA mainly focus on targeting pro-inflammatory cytokines and the activation of autoimmune inflammation. Such immunosuppressive therapies often carry the risk of secondary infection and tumor after oversuppression (Lin et al., 2020). Treatment strategies to induce arthritis remission from the perspective of promoting inflammation rather than inhibiting inflammation production have become a new focus of RA treatment research. Innate lymphocytes are a newly discovered group of immune cells. It has similar functions with T cells and can be used as a mediator to connect innate and adaptive immune (Vivier et al., 2018), and has become an important effector cell of



the innate immune system (Safardin and Blüml, 2020). ILC2s play a significant protective part in RA, and adjusting the function of ILC2s is a latent effect target for the therapy of RA (De Pasquale Claudia et al., 2021). Under the guidance of TCM theory, the flexible combination of Chinese herbal medicine and its natural products can prevent and treat patients with diverse syndromes (Li T.-p. et al., 2019). Chinese herbal medicine has long been used as a complementary or alternative medicine to treat RA (Zhang et al., 2018). The combination of Chinese herbs forms a variety of herbal therapeutic formulations, which play a significant synergistic role in treatment (Chen et al., 2020). Our study took this as the starting point to observe the role of the traditional Chinese Medicine Compound LTD in regulating the ILC2s immune response network and slowing down the inflammation of synovial tissue.

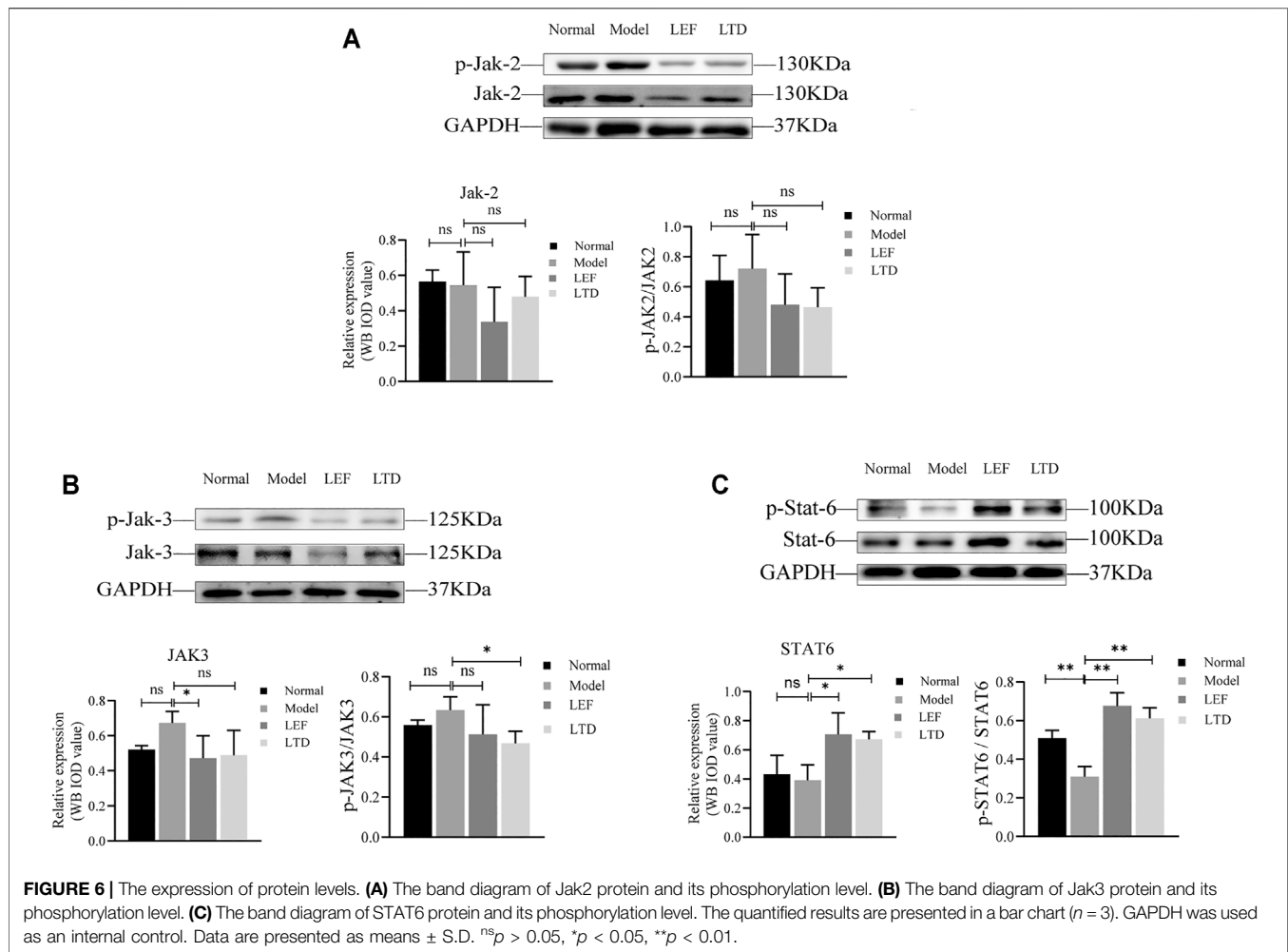
As mentioned earlier, the herbal formula for LTD consists of six herbs. Our study identified 19 major chemical components in LTD formulation by HPLC-ESI/MSn analysis. Pharmacological experiment researchers have demonstrated that oxymatrine could inhibit the proliferation of RA synovial cells and regulate the balance of Treg/Th17 (Jiang et al., 2018; Ma et al., 2017). Paeonin can up-regulate FOXO3 by inhibiting Mir-155 expression and prevent FLS proliferation and cytokine release (Liu J. et al., 2017). Scopolamine can inhibit the production of IL-6 by FLS in arthritic rats (Dou et al., 2013), as well as the proliferation and maturation of immature DCs in bone marrow (Wang et al., 2019), playing an anti-RA role. Berberine and apigenin inhibit synovial hyperplasia, angiogenesis, and osteoclast generation through a series of mechanisms that regulate immune responses (Huang et al., 2021; Li et al., 2016; Li Y. et al., 2019). In addition,



Isoschaftoside and Jatrorrhizine have been proven to prevent the production of inflammatory mediators (Qiu et al., 2018; Gomes et al., 2016). Pharmacological researchers have also indicated that quercetin can inhibit obvious ameliorate inflammation in CIA mice (Haleagrahara et al., 2017) and inhibit the mechanism of NF- κ B activation in arthritis (Yuan et al., 2020), which is a potential medicine for RA. Sinoline plays an anti-inflammatory and immunosuppressive proliferative role by inhibiting angiogenesis and adjusting the secretion of a variety of inflammatory cytokines (Feng et al., 2019; Liu et al., 2018;

Huang et al., 2019). Artesunate is a semisynthetic derivative of artemisinin, which can inhibit the secretion of TNF- α in RA synovial cells by regulating NF- κ B signaling pathway (Li et al., 2013), reduce the activity of IL-17, and regulate the balance of Th17/Treg lymphocytes (Mo et al., 2012; Liu N. et al., 2017). Therefore, we believe that these LTD components can play a synergistic therapeutic effect in promoting the remission and regression of RA inflammation.

The key pathological change of RA is that immune cells continuously infiltrate into the synovial tissues of the affected



joints, leading to the occurrence of autoimmune inflammation of the synovial tissues (Firestein and McInnes, 2017). It was found that memory CD4⁺ T cells secreted IL-17A, combined with TGF- β , to differentiate naive T into Th17 cells (Li et al., 2008). In addition, naive T cells can differentiate into effector T and Treg cells (ParkJung et al., 2019). Th17 cells secrete IL-17 to aggravate synovial inflammation (Keiji et al., 2018). The pro-inflammatory cytokines IL-17A and IFN- γ interact synergistically and are involved in the activation of FLS and macrophages, as well as the maturation of osteoclasts, leading to increased cartilage damage (Brian et al., 2015; Lin et al., 2020). Treg cells, on the other hand, produce anti-inflammatory cytokines and inhibit the development of Th17 (Brian et al., 2015) which are indispensable mediators for inhibiting inflammation and maintaining immune tolerance (ParkJung et al., 2019). As a typical anti-inflammatory cytokine, IL-4 can reduce the secretion of IL-17 and inhibit synovial inflammation and bone damage (Mateen et al., 2016). Our experiment also detected a high proportion of Th17 cells and IL-17 and IFN- γ in CIA mice. The proportion of Treg cells and the anti-inflammatory cytokine IL-4 was higher in the LTD group. Moreover, the results of HE staining, Safranin O staining, and Trap staining demonstrated that LTD can

alleviate the damage of articular cartilage caused by cartilage matrix degradation and loss of proteoglycan, inhibit osteoclast differentiation and synovial inflammatory infiltration, and repair the damage of cartilage and bone. These results indicated that LTD could inhibit the secretion of inflammatory cytokines by down-regulating the proportion of Th17 cells. At the same time, the differentiation of Treg cells was stimulated and the inflammatory progression of RA synovium was inhibited.

The JAK/STAT signaling pathway occupies a vital part in the pathogenesis of RA synovitis (Ptacek et al., 2021). Interactions of pro-inflammatory cytokines can phosphorylate JAK and then recruit and activate STATs proteins involved in signal transduction (Wang et al., 2020). Activation of JAK/STAT signaling pathway stimulates the expression of pro-inflammatory cytokines, induces FLS to proliferate and erodes cartilage in synovium, promotes synovium cell proliferation, and participates in cartilage lesions (Liu et al., 2021). Clinical trials have demonstrated the efficacy of JAK2 and JAK3 inhibitors in the treatment of RA (Wang et al., 2020). STAT6 plays an essential effect in the differentiation process of Treg cells (Sanchez-Guajardo et al., 2007) and can be activated by IL-4 and IL-13 to induce the polarization of macrophages, which is crucial in

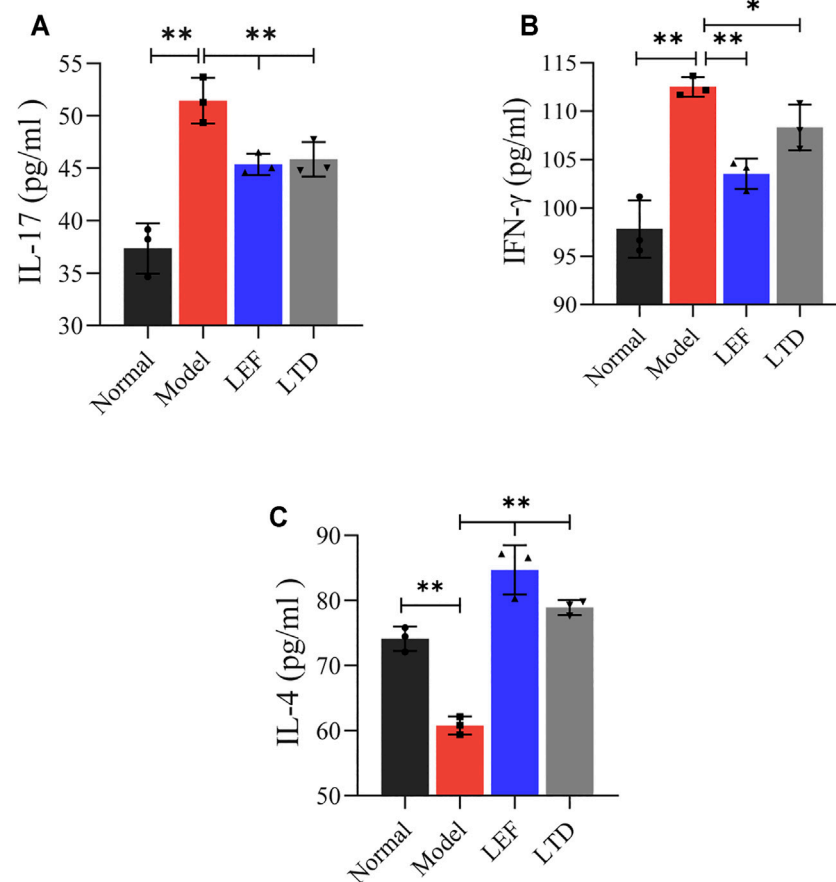


FIGURE 7 | The levels of pro-inflammatory and anti-inflammatory cytokines in serum detected by Elisa. **(A)** The level of IL-17 cytokine. **(B)** The level of INF- γ cytokine. **(C)** The level of IL-4 cytokine. All data are presented as the means \pm S.D. ($n = 3$). * $p < 0.05$ ** $p < 0.01$.

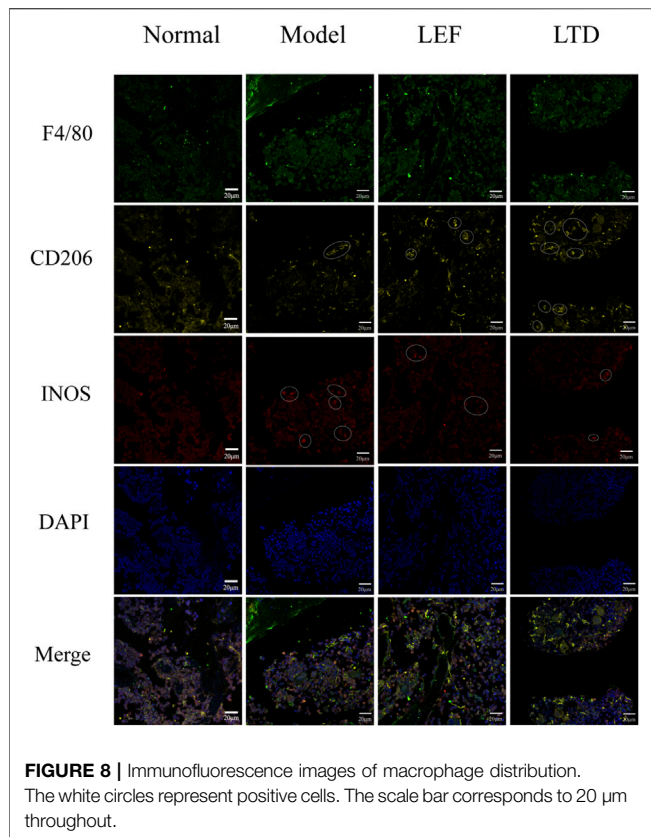
alleviating the immune activation of arthritis (Chen et al., 2019). Our experiment also observed high expression of STAT6 protein in synovial tissues of mice in the LTD treatment group. Strangely, our current experiments have not been able to prove that LTD has an inhibitory effect on the levels of highly expressed JAK2 and JAK3 proteins. The inhibitory effects of LTD on JAK2 and JAK3 proteins need to be further studied.

Macrophages exert a vital effect in immune response by controlling phagocytosis, producing cytokines, and presenting antigens to naive T cells (Di Benedetto et al., 2019). Macrophages are also significant in the pathogenesis of RA (Ardura Juan et al., 2019). It has been found that compared with healthy joints, there are more macrophages in the synovial tissue of inflammatory RA (Mulherin et al., 1996; Tak et al., 1997). These cells are the primary source of cytokines, chemokines (such as CCL2 and CXCL8), and degrading enzymes that lead to synovial proliferation and ultimately to cartilage and bone destruction (Edilova et al., 2020). Macrophages are divided into two different phenotypes, M1 and M2, and play different roles. M1-type macrophages can be activated by IFN- γ and TNF, and can also secrete IL-23 to induce the production of Th17 and IL-17, which has a pro-inflammatory effect (Siouti and Andreacos,

2019). In the process of inflammatory injury, synovial cells release IL-33, which specifically induces the differentiation of Th2 cells and the transformation of macrophages into an anti-inflammatory M2 phenotype (Schmitz et al., 2005). Activated M2 macrophages release IL-4, IL-13, IL-10, and TGF β , inhibit pro-inflammatory cytokines and the activation of osteoclasts, and participate in the regression of inflammation, angiogenesis, and tissue remodeling and repair (Tardito et al., 2019). It was demonstrated that F4/80⁺CD11b⁻ macrophages increased when the disease subsides, and their polarization is in favor of anti-inflammatory M2 macrophages (Tu et al., 2019).

In this experiment, our dates show that LTD treatment can regulate the STAT6 protein expression and promote the transformation of M1-type macrophages into the anti-inflammatory M2 phenotype. It also helps to regulate the secretion of inflammatory cytokines and shows immunosuppressive activity, thus slowing down the inflammatory process of synovial tissue and accelerating the regression of joint inflammation.

It was reported that ILC2s were reduced in the blood and synovial biopsy of RA patients (Leijten Emmerik et al., 2015). Our study also found a decrease in the percentage of IC2s cells in



synovial tissue in CIA mice compared to the normal group. ILC2s is characterized by high expression of GATA-3 and production of Th 2 cytokines (IL-4) (Ebihara, 2020). After treatment with LTD, the number of ILC2s in the pathological tissues of CIA mice increased significantly. By secreting IL-4 and IL-13, ILC2s can inhibit or slow down the pathological changes of synovial inflammation in RA joints and play the immune regulatory function (Yasunori et al., 2018). It can also activate the STAT6 signaling pathway (Chen et al., 2019), promote the differentiation of M2 macrophages through the autocrine growth factor IL-9, release TGF- β , induce the recruitment and activation of Treg cells, inhibit the proliferation of Th17 cells and the secretion of

pro-inflammatory cytokine IL-17, and improve inflammatory arthritis (Rauber et al., 2017).

In our study, LTD proved to be an effective herbal formula for treating RA. It can reduce the inflammatory swelling of joints in CIA mice, inhibit inflammation infiltration of synovial tissue, and relieve the cartilage damage. The main mechanisms may be related to regulating the proliferation of ILC2s and Th cells, regulating the activation of JAK/STAT signaling pathway, promoting the transformation of M1-type macrophages into anti-inflammatory M2 phenotype, inhibiting the secretion of pro-inflammatory factors, and restoring the homeostasis of RA tissue environment. These results of this research provide a basis for further LTD supplementation in the treatment of autoimmune arthritis including RA. Taken together, our results suggest that LTD can be considered as a supplement or replacement to traditional medicines in the treatment of RA.

DATA AVAILABILITY STATEMENT

The original contributions presented in the study are included in the article/Supplementary Material, and further inquiries can be directed to the corresponding authors.

ETHICS STATEMENT

The animal study was reviewed and approved by the Animal Ethics Committee of the Beijing University of Chinese Medicine. Written informed consent was obtained from the owners for the participation of their animals in this study.

AUTHOR CONTRIBUTIONS

HZ is responsible for assisting LC in carrying out research in this field, processing experimental data and writing this paper. JL and PZ contributed to writing assistance and reading the manuscript. HZ, JL, PZ, and DL performed the experiment. MH, GF, and SS participated in data analysis. All authors contributed to the article and approved the submitted version.

REFERENCES

- Aletaha, D., and Smolen, J. S. (2018). Diagnosis and Management of Rheumatoid Arthritis: A Review. *JAMA* 320, 1360–1372. doi:10.1001/jama.2018.13103
- Ardura, J. A., Rackov, G., Izquierdo, E., Alonso, V., Gortazar, A. R., and Escribese, M. M. (2019). Targeting Macrophages: Friends or Foes in Disease?. *Front. Pharmacol.* 10, 1255. doi:10.3389/fphar.2019.01255
- Astry, B., Venkatesha, S. H., and Moudgil, K. D. (2015). Involvement of the IL-23/IL-17 axis and the Th17/Treg Balance in the Pathogenesis and Control of Autoimmune Arthritis. *Cytokine* 74, 54–61. doi:10.1016/j.cyto.2014.11.020
- Bugatti, S., Bozzalla Cassione, E., De Stefano, L., and Manzo, A. (2019). Established Rheumatoid Arthritis. The Pathogenic Aspects. *Best Pract. Res. Clin. Rheumatol.* 33 (5), 101478. doi:10.1016/j.berh.2019.101478
- Chen, H., Wang, C., Li, J., Huandike, M., Liu, J., Huang, Q., et al. (2020). Chinese Herbal Formula, Huayu Tongbi Fang, Attenuates Inflammatory Proliferation of Rat Synoviocytes Induced by IL-1 β by Regulating Proliferation and Differentiation of T Lymphocytes. *Evidence-Based Complement. Altern. Med.* 2020, 1–18. doi:10.1155/2020/1706837
- Chen, Z., Bozec, A., Rammig, A., and Schett, G. (2019). Anti-inflammatory and Immune-Regulatory Cytokines in Rheumatoid Arthritis. *Nat. Rev. Rheumatol.* 15, 9–17. doi:10.1038/s41584-018-0109-2
- De Pasquale, C., Campana, S., Bonaccorsi, I., Carrega, P., and Ferlazzo, G. (2021). ILC in Chronic Inflammation, Cancer and Targeting with Biologicals. *Mol. Aspects Med.* 80, 100963. doi:10.1016/J.MAM.2021.100963
- Deng, J., Liu, Y., Yang, M., Wang, S., Zhang, M., Wang, X., et al. (2012). Leptin Exacerbates Collagen-Induced Arthritis via Enhancement of Th17 Cell Response. *Arthritis Rheum.* 64, 3564–3573. doi:10.1002/art.34637
- Di Benedetto, P., Ruscitti, P., Vadasz, Z., Toubi, E., and Giacomelli, R. (2019). Macrophages with Regulatory Functions, a Possible New Therapeutic Perspective in Autoimmune Diseases. *Autoimmun. Rev.* 18, 102369. doi:10.1016/j.autrev.2019.102369
- Dou, Y., Tong, B., Wei, Z., Li, Y., Xia, Y., and Dai, Y. (2013). Scopoletin Suppresses IL-6 Production from Fibroblast-like Synoviocytes of Adjuvant Arthritis Rats

- Induced by IL-1 β Stimulation. *Int. Immunopharmacol* 17, 1037–1043. doi:10.1016/j.intimp.2013.10.011
- Duan, Y., Wang, M., Yang, J., Gao, Y., Cheng, G., Shubin, M., et al. (2014). Effect of Water-Soluble Total Saponins on RA Cell Model and its Downstream Factors. *World Science and Technology-Modernization of Traditional Chinese Medicine* 16, 1396–1400.
- Ebihara, T. (2020). Dichotomous Regulation of Acquired Immunity by Innate Lymphoid Cells. *Cells* 9 (5). doi:10.3390/cells9051193
- Edilova, M. I., Akram, A., and Abdul-Sater, A. A. (2021). Innate Immunity Drives Pathogenesis of Rheumatoid Arthritis. *Biomed. J.* 44, 172–182. doi:10.1016/j.bj.2020.06.010
- Exley, M. A., Tsokos, G. C., Mills, K. H., Elewaut, D., and Mulhearn, B. (2016). What Rheumatologists Need to Know about Innate Lymphocytes. *Nat. Rev. Rheumatol.* 12, 658–668. doi:10.1038/nrrheum.2016.140
- Feng, Z.-t., Yang, T., Hou, X.-q., Wu, H.-y., Feng, J.-t., Ou, B.-j., et al. (2019). Sinomenine Mitigates Collagen-Induced Arthritis Mice by Inhibiting Angiogenesis. *Biomed. Pharmacother.* 113, 108759. doi:10.1016/j.biopha.2019.108759
- Firestein, G. S. (2003). Evolving Concepts of Rheumatoid Arthritis. *Nature* 423, 356–361. doi:10.1038/nature01661
- Firestein, G. S., and McInnes, I. B. (2017). Immunopathogenesis of Rheumatoid Arthritis. *Immunity* 46, 183–196. doi:10.1016/j.immuni.2017.02.006
- Gomes, J. A., Félix-Silva, J., Morais Fernandes, J., Geraldo Amaral, J., Lopes, N. P., Tabosa do Egito, E. S., et al. (2016). Aqueous Leaf Extract of *Jatropha Mollissima* (Pohl) Bail Decreases Local Effects Induced by Bothropic Venom. *Biomed. Res. Int.* 2016, 6101742. doi:10.1155/2016/6101742
- Guia, S., and Narni-Mancinelli, E. (2020). Helper-like Innate Lymphoid Cells in Humans and Mice. *Trends Immunol.* 41, 436–452. doi:10.1016/j.IT.2020.03.002
- Haleagrahara, N., Miranda-Hernandez, S., Alim, M. A., Hayes, L., Bird, G., and Ketheesan, N. (2017). Therapeutic Effect of Quercetin in Collagen-Induced Arthritis. *Biomed. Pharmacother.* 90, 38–46. doi:10.1016/j.biopha.2017.03.026
- Hirota, K., Hashimoto, M., Ito, Y., Matsuura, M., Ito, H., Tanaka, M., et al. (2018). Autoimmune Th17 Cells Induced Synovial Stromal and Innate Lymphoid Cell Secretion of the Cytokine GM-CSF to Initiate and Augment Autoimmune Arthritis. *Immunity* 48, 1220–e5. doi:10.1016/j.immuni.2018.04.009
- Huang, D. N., Wu, F. F., Zhang, A. H., Sun, H., and Wang, X. J. (2021). Efficacy of Berberine in Treatment of Rheumatoid Arthritis: From Multiple Targets to Therapeutic Potential. *Pharmacol. Res.* 169, 105667. doi:10.1016/J.PHRS.2021.105667
- Huang, R. Y., Pan, H. D., Wu, J. Q., Zhou, H., Li, Z. G., Qiu, P., et al. (2019). Comparison of Combination Therapy with Methotrexate and Sinomenine or Leflunomide for Active Rheumatoid Arthritis: A Randomized Controlled Clinical Trial. *Phytomedicine* 57, 403–410. doi:10.1016/j.phymed.2018.12.030
- Leijten, E. F., van Kempen, T. S., Boes, M., Michels-van Amelsfort, J. M., Hijnen, D., Hartgring, S. A., et al. (2015). Brief Report: Enrichment of Activated Group 3 Innate Lymphoid Cells in Psoriatic Arthritis Synovial Fluid. *Arthritis Rheumatol.* 67, 2673–2678. doi:10.1002/art.39261
- Li, J., Wei, Y., Li, X., Zhu, D., Nie, B., Zhou, J., et al. (2017). Herbal Formula Xian-Fang-Huo-Ming-Yin Regulates Differentiation of Lymphocytes and Production of Pro-inflammatory Cytokines in Collagen-Induced Arthritis Mice. *BMC Complement. Altern. Med.* 17, 12. doi:10.1186/s12906-016-1526-x
- Li, T.-p., Zhang, A.-h., Miao, J.-h., Sun, H., Yan, G.-l., Wu, F.-f., et al. (2019a). Applications and Potential Mechanisms of Herbal Medicines for Rheumatoid Arthritis Treatment: a Systematic Review. *RSC Adv.* 9, 26381–26392. doi:10.1039/c9ra04737a
- Li, X., Han, Y., Zhou, Q., Jie, H., He, Y., Han, J., et al. (2016). Apigenin, a Potent Suppressor of Dendritic Cell Maturation and Migration, Protects against Collagen-Induced Arthritis. *J. Cel Mol Med* 20, 170–180. doi:10.1111/jcmm.12717
- Li, Y., Wang, S., Wang, Y., Zhou, C., Chen, G., Shen, W., et al. (2013). Inhibitory Effect of the Antimalarial Agent Artesunate on Collagen-Induced Arthritis in Rats through Nuclear Factor Kappa B and Mitogen-Activated Protein Kinase Signaling Pathway. *Transl Res.* 161, 89–98. doi:10.1016/j.trsl.2012.06.001
- Li, Y., Yang, B., Bai, J. Y., Xia, S., Mao, M., Li, X., et al. (2019b). The Roles of Synovial Hyperplasia, Angiogenesis and Osteoclastogenesis in the Protective Effect of Apigenin on Collagen-Induced Arthritis. *Int. Immunopharmacol* 73, 362–369. doi:10.1016/j.intimp.2019.05.024
- Li, Y., and Zhou, H. (2020). Research Progress on Pharmacological Action and Mechanism of Total Saponins of Pangolin. *J. traditional Chin. Med.* 48, 73–77. doi:10.19664/j.cnki.1002-2392.200094
- Liang, J., Chang, B., Huang, M., Huang, W., Ma, W., Liu, Y., et al. (2018). Oxymatrine Prevents Synovial Inflammation and Migration via Blocking NF-Kb Activation in Rheumatoid Fibroblast-like Synoviocytes. *Int. Immunopharmacol* 55, 105–111. doi:10.1016/j.intimp.2017.12.006
- Lin, Y. J., Anzaghe, M., and Schülke, S. (2020). Update on the Pathomechanism, Diagnosis, and Treatment Options for Rheumatoid Arthritis. *Cells* 9 (4), 880. doi:10.3390/cells9040880
- Liu, J., Hong, X., Lin, D., Luo, X., Zhu, M., Mo, H., et al. (2017a). Artesunate Influences Th17/Treg Lymphocyte Balance by Modulating Treg Apoptosis and Th17 Proliferation in a Murine Model of Rheumatoid Arthritis. *Exp. Ther. Med.* 13, 2267–2273. doi:10.3892/etm.2017.4232
- Liu, N., Feng, X., Wang, W., Zhao, X., and Li, X. (2017b). Paeonol Protects against TNF- α -Induced Proliferation and Cytokine Release of Rheumatoid Arthritis Fibroblast-like Synoviocytes by Upregulating FOXO3 through Inhibition of miR-155 Expression. *Inflamm. Res.* 66, 603–610. doi:10.1007/s00011-017-1041-7
- Liu, S., Ma, H., Zhang, H., Deng, C., and Xin, P. (2021). Recent Advances on Signaling Pathways and Their Inhibitors in Rheumatoid Arthritis. *Clin. Immunol.* 230, 108793. doi:10.1016/J.CLIM.2021.108793
- Liu, W., Zhang, Y., Zhu, W., Ma, C., Ruan, J., Long, H., et al. (2018). Sinomenine Inhibits the Progression of Rheumatoid Arthritis by Regulating the Secretion of Inflammatory Cytokines and Monocyte/Macrophage Subsets. *Front. Immunol.* 9, 2228. doi:10.3389/fimmu.2018.02228
- Lou, L., Liu, Y., Zhou, J., Wei, Y., Deng, J., Dong, B., et al. (2015). Chlorogenic Acid and Luteolin Synergistically Inhibit the Proliferation of Interleukin-1 β -Induced Fibroblast-like Synoviocytes through Regulating the Activation of NF-Kb and JAK/STAT-signaling Pathways. *Immunopharmacol Immunotoxicol* 37, 499–507. doi:10.3109/08923973.2015.1095763
- Lou, L., Zhou, J., Liu, Y., Wei, Y. I., Zhao, J., Deng, J., et al. (2016). Chlorogenic Acid Induces Apoptosis to Inhibit Inflammatory Proliferation of IL-6-induced Fibroblast-like Synoviocytes through Modulating the Activation of JAK/STAT and NF-Kb Signaling Pathways. *Exp. Ther. Med.* 11, 2054–2060. doi:10.3892/etm.2016.3136
- Ma, A., Yang, Y., Wang, Q., Wang, Y., Wen, J., and Zhang, Y. (2017). Anti-inflammatory E-effects of O-xymatrine on R-heumatoid A-rthritis in R-rats via R-regulating the I-mbalance between Treg and Th17 C-ells. *Mol. Med. Rep.* 15, 3615–3622. doi:10.3892/mmr.2017.6484
- Mateen, S., Zafar, A., Moin, S., Khan, A. Q., and Zubair, S. (2016). Understanding the Role of Cytokines in the Pathogenesis of Rheumatoid Arthritis. *Clin. Chim. Acta* 455, 161–171. doi:10.1016/j.cca.2016.02.010
- Mo, H. Y., Wang, L. F., and Zhang, L. H. (2012). Effects of Artesunate on Tumor Necrosis Factor Alpha and Chemotactic Factors in the Serum and the Synoviocyte Culture Supernate of Collagen-Induced Arthritis Rats. *Zhongguo Zhong Xi Yi Jie He Za Zhi* 32, 253–256.
- Mulherin, D., Fitzgerald, O., and Bresnihan, B. (1996). Synovial Tissue Macrophage Populations and Articular Damage in Rheumatoid Arthritis. *Arthritis Rheum.* 39, 115–124. doi:10.1002/art.1780390116
- Nie, B., Xue, L., Yi, W., Meng, C., Zhou, J., Lou, L., et al. (2016). Xianfanghuomingyin, a Chinese Compound Medicine, Modulates the Proliferation and Differentiation of T Lymphocyte in a Collagen-Induced Arthritis Mouse Model. *Evid. Based Complement. Alternat Med.* 2016, 1–14. doi:10.1155/2016/6356871
- Omata, Y., Frech, M., Lucas, S., Primbs, T., Knipfer, L., Wirtz, S., et al. (2020). Type 2 Innate Lymphoid Cells Inhibit the Differentiation of Osteoclasts and Protect from Ovariectomy-Induced Bone Loss. *Bone* 136, 115335. doi:10.1016/j.bone.2020.115335
- Omata, Y., Frech, M., Primbs, T., Lucas, S., Andreev, D., Scholtyssek, C., et al. (2018). Group 2 Innate Lymphoid Cells Attenuate Inflammatory Arthritis and Protect from Bone Destruction in Mice. *Cell Rep* 24, 169–180. doi:10.1016/j.celrep.2018.06.005
- Orr, C., Vieira-Sousa, E., Boyle, D. L., Buch, M. H., Buckley, C. D., Cañete, J. D., et al. (2017). Synovial Tissue Research: a State-Of-The-Art Review. *Nat. Rev. Rheumatol.* 13, 630–475. doi:10.1038/nrrheum.2017.161
- Park, M. J., Moon, S. J., Lee, E. J., Kim, E. K., Baek, J. A., Kim, S. Y., et al. (2019). Daurinol Attenuates Autoimmune Arthritis via Stabilization of Nrp1-PTEN-

- Foxp3 Signaling in Regulatory T Cells. *Front. Immunol.* 10, 1526. doi:10.3389/fimmu.2019.01526
- Ptacek, J., Hawtin, R. E., Sun, D., Louie, B., Evensen, E., Mittleman, B. B., et al. (2021). Diminished Cytokine-Induced Jak/STAT Signaling Is Associated with Rheumatoid Arthritis and Disease Activity. *PLoS one* 16, e0244187. doi:10.1371/JOURNAL.PONE.0244187
- Qi, C., Wang, Y., Li, S., Zhou, J., and Chai, L. (2019). Clinical Observation and Immune Mechanism Study of Integrated Chinese and Western Medicine in the Treatment of Rheumatoid Arthritis in Active Stage. *J. Guangzhou Univ. Chin. Med.* 36, 1875–1881. doi:10.13359/j.cnki.gzxbtcm.2019.12.002
- Qiu, H., Sun, S., Ma, X., Cui, C., Chen, G., Liu, Z., et al. (2018). Jatrohrhizine Hydrochloride Suppresses Proliferation, Migration, and Secretion of Synoviocytes *In Vitro* and Ameliorates Rat Models of Rheumatoid Arthritis *In Vivo*. *Int. J. Mol. Sci.* 19 (5). doi:10.3390/ijms19051514
- Rauber, S., Lubert, M., Weber, S., Maul, L., Soare, A., Wohlfahrt, T., et al. (2017). Resolution of Inflammation by Interleukin-9-Producing Type 2 Innate Lymphoid Cells. *Nat. Med.* 23, 938–944. doi:10.1038/nm.4373
- Ren, W., Wang, Y., He, Q., Zhou, Y., Li, C., Wang, W., et al. (2019). Chemical Composition of *Erycibe Schmidtii* and Antiproliferative Activity of Scopoletin on Immature Dendritic Cells. *Nat. Prod. Res.* 34, 2581–2588. doi:10.1080/14786419.2018.1547292
- Saferding, V., and Blüml, S. (2020). Innate Immunity as the Trigger of Systemic Autoimmune Diseases. *J. Autoimmun.* 110, 102382. doi:10.1016/j.jaut.2019.102382
- Sanchez-Guajardo, V., Tanchot, C., O'Malley, J. T., Kaplan, M. H., Garcia, S., and Freitas, A. A. (2007). Agonist-driven Development of CD4+CD25+Foxp3+ Regulatory T Cells Requires a Second Signal Mediated by Stat6. *J. Immunol.* 178, 7550–7556. doi:10.4049/jimmunol.178.12.7550
- Schmitz, J., Owyang, A., Oldham, E., Song, Y., Murphy, E., McClanahan, T. K., et al. (2005). IL-33, an Interleukin-1-like Cytokine that Signals via the IL-1 Receptor-Related Protein ST2 and Induces T Helper Type 2-associated Cytokines. *Immunity* 23, 479–490. doi:10.1016/j.immuni.2005.09.015
- Shikhagaie, M. M., Germar, K., Bal, S. M., Ros, X. R., and Spits, H. (2017). Innate Lymphoid Cells in Autoimmunity: Emerging Regulators in Rheumatic Diseases. *Nat. Rev. Rheumatol.* 13, 164–173. doi:10.1038/nrrheum.2016.218
- Siebert, S., Tsoukas, A., Robertson, J., and McInnes, I. (2015). Cytokines as Therapeutic Targets in Rheumatoid Arthritis and Other Inflammatory Diseases. *Pharmacol. Rev.* 67, 280–309. doi:10.1124/pr.114.009639
- Siouti, E., and Andreacos, E. (2019). The many Facets of Macrophages in Rheumatoid Arthritis. *Biochem. Pharmacol.* 165, 152–169. doi:10.1016/j.bcp.2019.03.029
- Tak, P. P., Smeets, T. J., Daha, M. R., Kluin, P. M., Meijers, K. A., Brand, R., et al. (1997). Analysis of the Synovial Cell Infiltrate in Early Rheumatoid Synovial Tissue in Relation to Local Disease Activity. *Arthritis Rheum.* 40, 217–225. doi:10.1002/art.1780400206
- Tamai, M., Kawakami, A., Tanaka, F., Miyashita, T., Nakamura, H., Iwanaga, N., et al. (2006). Significant Inhibition of TRAIL-Mediated Fibroblast-like Synovial Cell Apoptosis by IFN-Gamma through JAK/STAT Pathway by Translational Regulation. *J. Lab. Clin. Med.* 147 (4), 182–190. doi:10.1016/j.lab.2005.12.001
- Tardito, S., Martinelli, G., Soldano, S., Paolino, S., Pacini, G., Patane, M., et al. (2019). Macrophage M1/M2 Polarization and Rheumatoid Arthritis: A Systematic Review. *Autoimmun. Rev.* 18 (11), 102397. doi:10.1016/j.autrev.2019.102397
- Tu, J., Hong, W., Guo, Y., Zhang, P., Fang, Y., Wang, X., et al. (2019). Ontogeny of Synovial Macrophages and the Roles of Synovial Macrophages from Different Origins in Arthritis. *Front. Immunol.* 10, 1146. doi:10.3389/fimmu.2019.01146
- Vivier, E., Artis, D., Colonna, M., Diefenbach, A., Di Santo, J. P., Eberl, G., et al. (2018). Innate Lymphoid Cells: 10 Years on. *Cell* 174, 1054–1066. doi:10.1016/j.cell.2018.07.017
- Walker, J. G., Ahern, M. J., Coleman, M., Weedon, H., Papangelis, V., Beroukas, D., et al. (2006). Expression of Jak3, STAT1, STAT4, and STAT6 in Inflammatory Arthritis: Unique Jak3 and STAT4 Expression in Dendritic Cells in Seropositive Rheumatoid Arthritis. *Ann. Rheum. Dis.* 65 (2), 149–156. doi:10.1136/ard.2005.037929
- Wang, H., Fang, Y., Wang, Y., Wang, Z., Zou, Q., Shi, Y., et al. (20122012). Inhibitory Effect of Curcumol on Jak2-STAT Signal Pathway Molecules of Fibroblast-like Synoviocytes in Patients with Rheumatoid Arthritis. *Evidence-Based Complement. Altern. Med.* 2012, 1–8. doi:10.1155/2012/746426
- Wang, Q., Zhou, X., Yang, L., Zhao, Y., Chew, Z., Xiao, J., et al. (2020). The Natural Compound Notopterol Binds and Targets JAK2/3 to Ameliorate Inflammation and Arthritis. *Cel Rep* 33, 108442. doi:10.1016/J.CELREP.2020.108442
- Wang, X., Chang, J., Zhou, G., Cheng, C., Xiong, Y., Dou, J., et al. (2021b). The Traditional Chinese Medicine Compound Huangqin Qingre Chubi Capsule Inhibits the Pathogenesis of Rheumatoid Arthritis through the CUL4B/Wnt Pathway. *Front. Pharmacol.* 12, 750233. doi:10.3389/fphar.2021.750233
- Wang, Y., Junjian, T., Zhou, H., Zhaoqing, W., Wu, S., Yuan, L., et al. (2021a). Effect of Longteng Decoction on Humoral Immunity in Patients with Rheumatoid Arthritis. *J. Jilin Traditional Chin. Med.* 41, 58–61. doi:10.13463/j.cnki.jlzyy.2021.01.017
- Yamada, A., Takami, M., Kawawa, T., Yasuhara, R., Zhao, B., Mochizuki, A., et al. (2007). Interleukin-4 Inhibition of Osteoclast Differentiation Is Stronger Than that of Interleukin-13 and They Are Equivalent for Induction of Osteoprotegerin Production from Osteoblasts. *Immunology* 120, 573–579. doi:10.1111/j.1365-2567.2006.02538.x
- Yang, L., Anderson, D. E., Baecher-Allan, C., Hastings, W. D., Bettelli, E., Oukka, M., et al. (2008). IL-21 and TGF-Beta Are Required for Differentiation of Human T(H)17 Cells. *Nature* 454, 350–352. doi:10.1038/nature07021
- Yu, T., Zhao, L., Huang, X., Ma, C., Wang, Y., Zhang, J., et al. (2016). Enhanced Activity of the Macrophage M1/M2 Phenotypes and Phenotypic Switch to M1 in Periodontal Infection. *J. Periodontol.* 87, 1092–1102. doi:10.1902/jop.2016.160081
- Yuan, K., Zhu, Q., Lu, Q., Jiang, H., Zhu, M., Li, X., et al. (2020). Quercetin Alleviates Rheumatoid Arthritis by Inhibiting Neutrophil Inflammatory Activities. *J. Nutr. Biochem.* 84, 108454. doi:10.1016/j.jnutbio.2020.108454
- Zhang, A., Sun, H., and Wang, X. (2018). Mass Spectrometry-Driven Drug Discovery for Development of Herbal Medicine. *Mass. Spectrom. Rev.* 37, 307–320. doi:10.1002/mas.21529

Conflict of Interest: The authors declare that the research was conducted in the absence of any commercial or financial relationships that could be construed as a potential conflict of interest.

Publisher's Note: All claims expressed in this article are solely those of the authors and do not necessarily represent those of their affiliated organizations, or those of the publisher, the editors, and the reviewers. Any product that may be evaluated in this article, or claim that may be made by its manufacturer, is not guaranteed or endorsed by the publisher.

Copyright © 2021 Zhang, Liu, Zhang, Li, Feng, Huandike, Sun, Chai and Zhou. This is an open-access article distributed under the terms of the Creative Commons Attribution License (CC BY). The use, distribution or reproduction in other forums is permitted, provided the original author(s) and the copyright owner(s) are credited and that the original publication in this journal is cited, in accordance with accepted academic practice. No use, distribution or reproduction is permitted which does not comply with these terms.