



# Corrigendum: Progression and Regression of Hepatic Lesions in a Mouse Model of NASH Induced by Dietary Intervention and Its Implications in Pharmacotherapy

## OPEN ACCESS

### Edited and reviewed by:

Salvatore Salomone,  
University of Catania, Italy

### \*Correspondence:

Haiqing Hua  
haiqing.hua@outlook.com

### Specialty section:

This article was submitted to  
Experimental Pharmacology  
and Drug Discovery,  
a section of the journal  
Frontiers in Pharmacology

**Received:** 11 January 2020

**Accepted:** 27 January 2020

**Published:** 19 February 2020

### Citation:

Ding Z-M, Xiao Y, Wu X, Zou H,  
Yang S, Shen Y, Xu J, Workman HC,  
Usborne AL and Hua H (2020)  
Corrigendum: Progression and  
Regression of Hepatic Lesions in a  
Mouse Model of NASH Induced by  
Dietary Intervention and Its  
Implications in Pharmacotherapy.  
Front. Pharmacol. 11:93.  
doi: 10.3389/fphar.2020.00093

Zhi-Ming Ding<sup>1</sup>, Yue Xiao<sup>1</sup>, Xikun Wu<sup>1</sup>, Haixia Zou<sup>1</sup>, Shurong Yang<sup>1</sup>, Yiyun Shen<sup>1</sup>,  
Juehua Xu<sup>1</sup>, Heather C. Workman<sup>2</sup>, Amy L. Usborne<sup>3</sup> and Haiqing Hua<sup>1\*</sup>

<sup>1</sup> Lilly China R&D Center, Shanghai, China, <sup>2</sup> Covance Inc., Indianapolis, IN, United States, <sup>3</sup> Lilly Research Laboratories, Eli Lilly and Co., Indianapolis, IN, United States

**Keywords:** non-alcoholic steatohepatitis, steatosis, inflammation, fibrosis, obeticholic acid, CCR2/5, pathogenesis

## A Corrigendum on

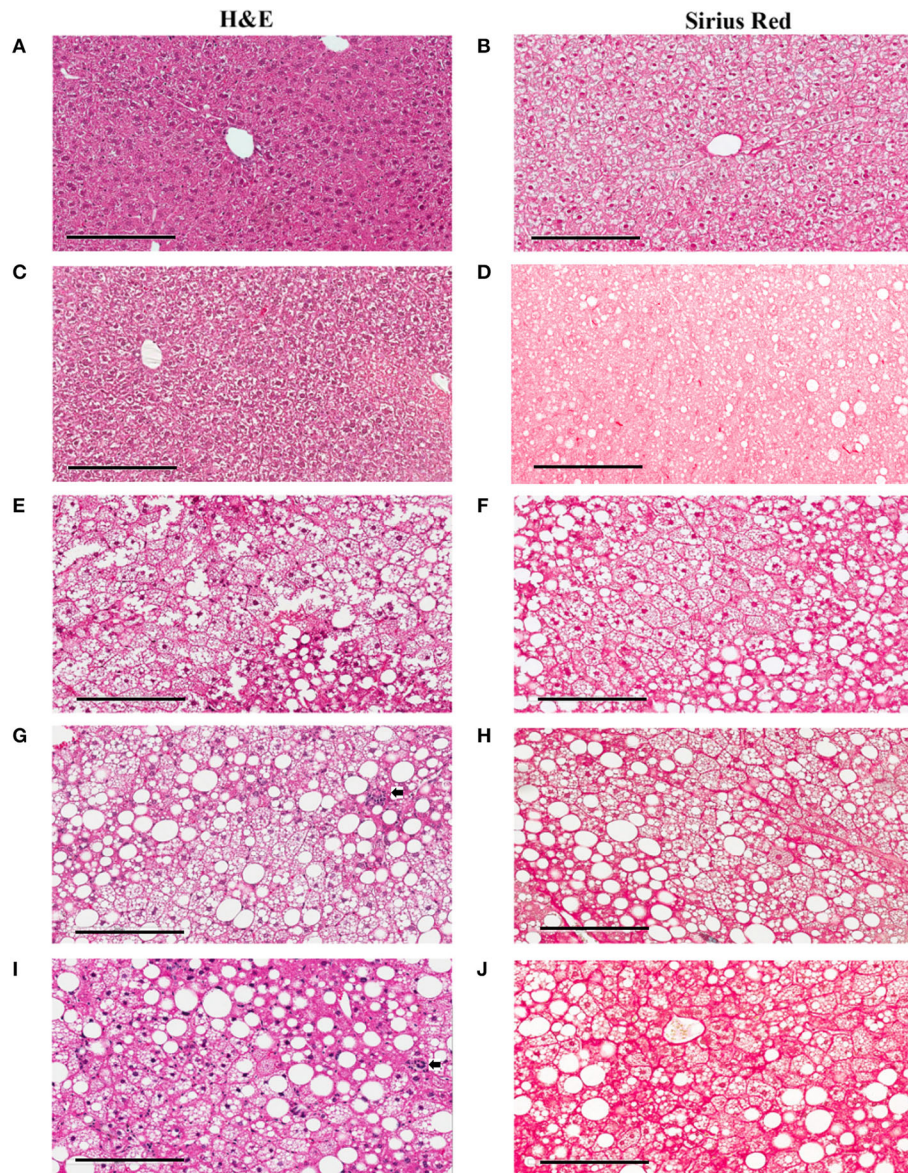
### Progression and Regression of Hepatic Lesions in a Mouse Model of NASH Induced by Dietary Intervention and Its Implications in Pharmacotherapy

by Ding Z-M, Xiao Y, Wu X, Zou H, Yang S, Shen Y, Xu J, Workman HC, Usborne AL and Hua H (2018). *Front. Pharmacol.* 9:410. doi: 10.3389/fphar.2018.00410

In the original article, there was a mistake in **Figure 3D** as published. **Figure 3D** should represent a liver section from mice fed on a western diet for 60 days; however, a liver section from mice fed on chow diet was mistakenly used. The corrected **Figure 3** appears below.

The authors apologize for this error and state that this does not change the scientific conclusions of the article in any way. The original article has been updated.

Copyright © 2020 Ding, Xiao, Wu, Zou, Yang, Shen, Xu, Workman, Usborne and Hua. This is an open-access article distributed under the terms of the Creative Commons Attribution License (CC BY). The use, distribution or reproduction in other forums is permitted, provided the original author(s) and the copyright owner(s) are credited and that the original publication in this journal is cited, in accordance with accepted academic practice. No use, distribution or reproduction is permitted which does not comply with these terms.



**FIGURE 3 |** Hepatic lesions of the NASH Mice at Different Age. The representative images were taken from the liver sections of the mice fed either rodent chow (**A, B**) or Western diet for 60 (**C, D**), 150 (**E, F**) and 245 (**G, H**), and 352 (**I, J**) days respectively. (**A, C, E, G, I**) are the images of the liver sections stained with **H&E**; Panels (**B, D, F, H, J**) are the images of the liver sections stained with Sirius Red.