

Ceftriaxone and cefazolin attenuate the cue-primed reinstatement of alcohol-seeking

Ana Weiland¹, Steven Garcia² and Lori A. Knackstedt^{2*}

¹ Department of Neuroscience, Medical University of South Carolina, Charleston, SC, USA, ² Department of Psychology, University of Florida, Gainesville, FL, USA

OPEN ACCESS

Edited by:

M. Foster Olive,
Arizona State University, USA

Reviewed by:

George V. Rebec,
Indiana University, USA
Jamie Peters,
Medical University of South Carolina,
USA

*Correspondence:

Lori A. Knackstedt,
Department of Psychology,
University of Florida, 114 Psychology
Building, P.O. Box 112250,
Gainesville, FL 32611-2250, USA
knack@ufl.edu

Specialty section:

This article was submitted to
Neuropharmacology, a section of the
journal *Frontiers in Pharmacology*

Received: 23 January 2015

Accepted: 19 February 2015

Published: 10 March 2015

Citation:

Weiland A, Garcia S and Knackstedt
LA (2015) Ceftriaxone and cefazolin
attenuate the cue-primed
reinstatement of alcohol-seeking.
Front. Pharmacol. 6:44.
doi: 10.3389/fphar.2015.00044

Alcohol consumption and the reinstatement of alcohol-seeking rely on glutamate and GABA transmission. Modulating these neurotransmitters may be a viable treatment strategy to prevent alcohol relapse. *N*-acetylcysteine (NAC) and the antibiotic ceftriaxone (CEF) alter the glial reuptake and release of glutamate while the antibiotic cefazolin (CEFAZ) modulates GABA signaling without affecting glutamate. Here, we used the extinction-reinstatement model of relapse to test the ability of these compounds to attenuate the reinstatement of alcohol-seeking. Male Sprague-Dawley rats were trained to self-administer 20% (v/v) alcohol in the home cage using an intermittent schedule (24 h on, 24 h off) for 12 sessions. Subsequently, animals self-administered alcohol during daily 45-min operant sessions for 26 sessions, followed by extinction training. We tested whether chronic administration of NAC, CEF, or CEFAZ attenuated the cue-primed reinstatement of alcohol-seeking while NAC had no effect. We subsequently investigated whether CEF and CEFAZ alter the self-administration of sucrose and chow pellets and if CEFAZ attenuates the reinstatement of cocaine-seeking. The operant self-administration of regular chow and sucrose was not altered by either CEF or CEFAZ. CEFAZ had no effect on cocaine reinstatement, a behavior that has been strongly tied to altered glutamate homeostasis in the nucleus accumbens. Thus the ability of CEFAZ to attenuate alcohol reinstatement likely does not involve the glial modulation of glutamate levels. The dampening of GABA transmission may be a common mechanism of action of cefazolin and ceftriaxone.

Keywords: glutamate, alcohol, GABA, cocaine, addiction, relapse, *N*-acetylcysteine, ceftriaxone

Introduction

Alcoholism or alcohol dependence is a chronic, progressive disease which results from an inability to regulate drug-seeking behavior. Approximately 17 million Americans are dependent on alcohol (NIH, 2006), resulting in significant legal and medical costs to society totaling an estimated \$184 billion per year (Kenna et al., 2004). At present, only disulfiram, naltrexone, and acamprosate are approved by the Food and Drug Administration to treat alcoholism. However, the ability of these medications to reduce the risk of relapse is modest (Heilig and Egli, 2006; Soyka and Roesner, 2006) and thus there is a need to develop more targeted pharmacological treatments for alcohol addiction.

Animal models of relapse permit the identification of the underlying neurobiology of alcohol relapse in humans and thus the targeted development of pharmacotherapies. Relapse is modeled in animals with the reinstatement paradigm, where animals are trained to self-administer drug in an operant chamber. The drug-seeking response is extinguished and reinstated with one of the stimuli known to cause relapse in humans such as stress, cues associated with drug delivery, or the drug itself (Epstein et al., 2006). It has proven challenging to get laboratory rats to voluntarily consume doses of alcohol relevant to human alcohol addiction. Various procedures have been attempted to increase oral consumption of alcohol in rodents, such as sucrose fading (Samson, 1986), food and water-deprivation (Meisch and Thompson, 1972), alcohol vapor exposure (Walker and Koob, 2007; Walker et al., 2008), and the use of rat strains selectively bred for high preference to alcohol (Samson et al., 1998; Vacca et al., 2002). Since its introduction in the 1980s, sucrose fading was largely adopted as the chief method of inducing rodents to self-administer alcohol in an operant setting (Samson, 1986). While sucrose fading yields high alcohol consumption in the presence of sucrose, drinking drops sharply when the sweetener is removed (Samson, 1986; Koob and Weiss, 1990; Samson et al., 1999; Carrillo et al., 2008). Additionally, sucrose has addictive properties itself (Colantuoni et al., 2002; Avena et al., 2008), possibly contributing to the motivation to consume sweetened alcohol. One method of inducing high amounts of unsweetened alcohol consumption in rodents is the intermittent access to alcohol (IAA) procedure in which rodents are provided 24 h access to alcohol followed by a 24 h period with no access (Wayner and Greenberg, 1972; Wise, 1973; Pinel and Huang, 1976). Simms et al. (2008) recently resurrected this model and induced levels of drinking (20% alcohol v/v) in the 5–8 g/kg/day range in Wistar and Long-Evans strains. Furthermore, Simms et al. (2010) adapted the IAA paradigm to an operant self-administration model and engendered high levels of alcohol-seeking in the operant chamber after using 14 h operant sessions on intermittent days (MWF), followed by shorter (30–45 min) daily sessions in the operant chamber. Here, we modified this method to eliminate the use of 14 h operant sessions and trained animals in the operant chamber only during daily 45-min sessions for 26 sessions (MTWRF).

We then sought to test the ability of translational compounds which modulate glutamate and/or GABA transmission to attenuate the cue-primed reinstatement of alcohol-seeking. Glutamate transmission in general and specifically in the nucleus accumbens (NAs) and amygdala is strongly implicated in cue-induced alcohol reinstatement. During the cue-primed reinstatement of extinguished operant alcohol-seeking, synaptic glutamate release increases in the NA and the amygdala (Gass et al., 2011). Thus, it follows that both systemic and intra-NA or intra-amygdala infusion of antagonists to post-synaptic glutamate receptors attenuate alcohol reinstatement (e.g., Backstrom and Hyytia, 2004; Backstrom et al., 2004; Sanchis-Segura et al., 2006; Sinclair et al., 2012).

The pharmacological manipulations which prevent relapse to alcohol-seeking also prevent the reinstatement of cocaine-seeking

(for review see Kalivas et al., 2009; Knackstedt and Kalivas, 2009). Following cocaine self-administration and withdrawal, evidence exists for altered glutamate homeostasis, defined as the homeostatic regulation of synaptic and extrasynaptic glutamate levels and signaling. Glutamate homeostasis in the accumbens is complex and regulated by multiple mechanisms, including by the major glutamate transporter GLT-1 and by system x_c^- . System x_c^- exchanges extracellular cystine for intracellular glutamate, thereby contributing the majority of basal extrasynaptic glutamate in the accumbens (Baker et al., 2002). The catalytic subunit of system x_c^- is the protein xCT and the hallmarks of altered glutamate homeostasis after cocaine include a reduction in expression and function of both GLT-1 and xCT/system x_c^- (Knackstedt et al., 2010; Trantham-Davidson et al., 2012). Based on the widespread involvement of various types of glutamate receptors in alcohol relapse, it is likely that glutamate homeostasis is altered following alcohol consumption as well.

Modulation of GABA transmission also impacts alcohol consumption and reinstatement. GABA_A antagonists and inverse agonists decrease alcohol consumption (see review by McBride and Li, 1998) and operant self-administration of alcohol (Samson et al., 1987). The GABA_B (autoreceptor) agonist baclofen decreases self-administration in non-dependent rats (Janak and Michael Gill, 2003). Conversely, allopregnanolone, an endogenous neurosteroid which has also been shown to be a potent positive modulator of GABA_A receptors, dose-dependently induces the reinstatement of alcohol-seeking (Nie and Janak, 2003; Finn et al., 2008).

We hypothesized that glutamate homeostasis is altered post-alcohol administration, and restoring homeostasis would reverse alcohol-induced plasticity and thereby attenuate the reinstatement of alcohol-seeking. It is possible to restore glutamate homeostasis and reverse cocaine-induced pathologies in synaptic plasticity following with *N*-acetylcysteine (NAC; Moussawi et al., 2009, 2011) or ceftriaxone (CEF; Trantham-Davidson et al., 2012) and here we tested their ability to attenuate cue-primed reinstatement of alcohol-seeking. NAC serves as a cystine pro-drug that drives system x_c^- to export more glutamate while CEF is an antibiotic that upregulates the expression of both GLT-1 (Lee et al., 2008) and xCT (Lewerenz et al., 2009) at the transcriptional level. We also hypothesized the antibiotic cefazolin (CEFAZ), which has been demonstrated to inhibit GABA_A transmission (Yamazaki et al., 2002; Sugimoto et al., 2003), would attenuate cue-primed alcohol reinstatement. In order to investigate a possible effect of CEFAZ on glutamate homeostasis, we tested its ability to attenuate the reinstatement of cocaine-seeking, a behavior that is dependent on altered glutamate release, clearance and basal levels (for review see Knackstedt and Kalivas, 2009).

Materials and Methods

Animals and Housing

Adult male Sprague-Dawley rats ($n = 84$), weighing 250–275 g upon arrival were individually housed in ventilated Plexiglas

cages in a climate-controlled room on a 12-h reverse light/dark cycle (lights off at 9 AM) and given at least 1 week to acclimate to the individual housing conditions and handling. Rats were provided ad libitum water throughout the experiment and were food-deprived to ~85% of free-feeding weight with a daily allowance of 20 g of food. Food-restriction generally increases responding without altering reinstatement relative to non-restricted controls (Bongiovanni and See, 2008). Experiment 1 was conducted at the Medical University of South Carolina and Experiments 2–4 were conducted at the University of Florida. All procedures were pre-approved by the Medical University of South Carolina and University of Florida Institutional Animal Care and Use Committees and were in accordance with National Institutes of Health *Guide for the Care and Use of Laboratory Animals*.

Operant Chambers and Training

Prior to beginning operant self-administration (Experiments 1–4), animals underwent a single, overnight food-training session in the operant chambers where presses on the active lever resulted in the delivery of food pellets. Operant chambers (Med Associates) were equipped with two retractable levers, stimulus lights, and tone generators. On the day following food training, animals were trained to self-administer alcohol, cocaine, or food pellets in the operant chamber. For the food self-administration study (Experiment 3), presses on the active lever delivered food pellets. For drug self-administration studies, presses on the active lever activated a pump which dispensed drug. For alcohol studies (Experiments 1 and 2), 0.1 mL alcohol (20% v/v) was dispensed into a dipper tray; infrared sensors verified head entry into the trough area to consume the alcohol. For the cocaine study (Experiment 4), 0.25 mg cocaine HCl (kindly provided by NIDA) in 0.1 mL 0.9% saline was delivered per infusion. For both cocaine and alcohol studies, drug delivery was accompanied by the presentation of discrete cues (a light and 2900 Hz tone) and for cocaine self-administration, was followed by a timeout (20 s) during which time presses on the active lever did not yield drug. Inactive lever presses had no consequences, but were recorded. For alcohol self-administration, the trough was blotted with a tissue at the end of the session to verify that all alcohol was consumed. Rats who habitually did not consume alcohol despite lever presses were eliminated from the experiment ($n = 3$ for Experiment 1; $n = 2$ for Experiment 2). Additionally, three rats that were in ill-health were removed from Experiments 1 and 2. For both alcohol and cocaine self-administration studies, animals self-administered drug for a pre-determined number of days in the operant boxes (26 for alcohol; 12 for cocaine) regardless of whether drug intake was stable or not. This method was chosen because we wanted to prevent animals from self-administering drug for varying amounts of time which could lead to a wide range of drug intake. The amount of cocaine consumed during self-administration has been correlated with later drug-seeking during reinstatement tests (e.g., Deroche et al., 1999; Baker et al., 2001).

Alcohol Self-Administration, Extinction Training, and Reinstatement Testing

All rats that later self-administered alcohol in the operant chambers were first trained to drink with the IAA (e.g., Simms et al., 2008). This paradigm provides rats with 24-h access to unsweetened 20% alcohol on alternating days (3 days/weeks) without water-deprivation. Animals experienced 12 sessions (over 4 weeks) of the intermittent-access drinking paradigm.

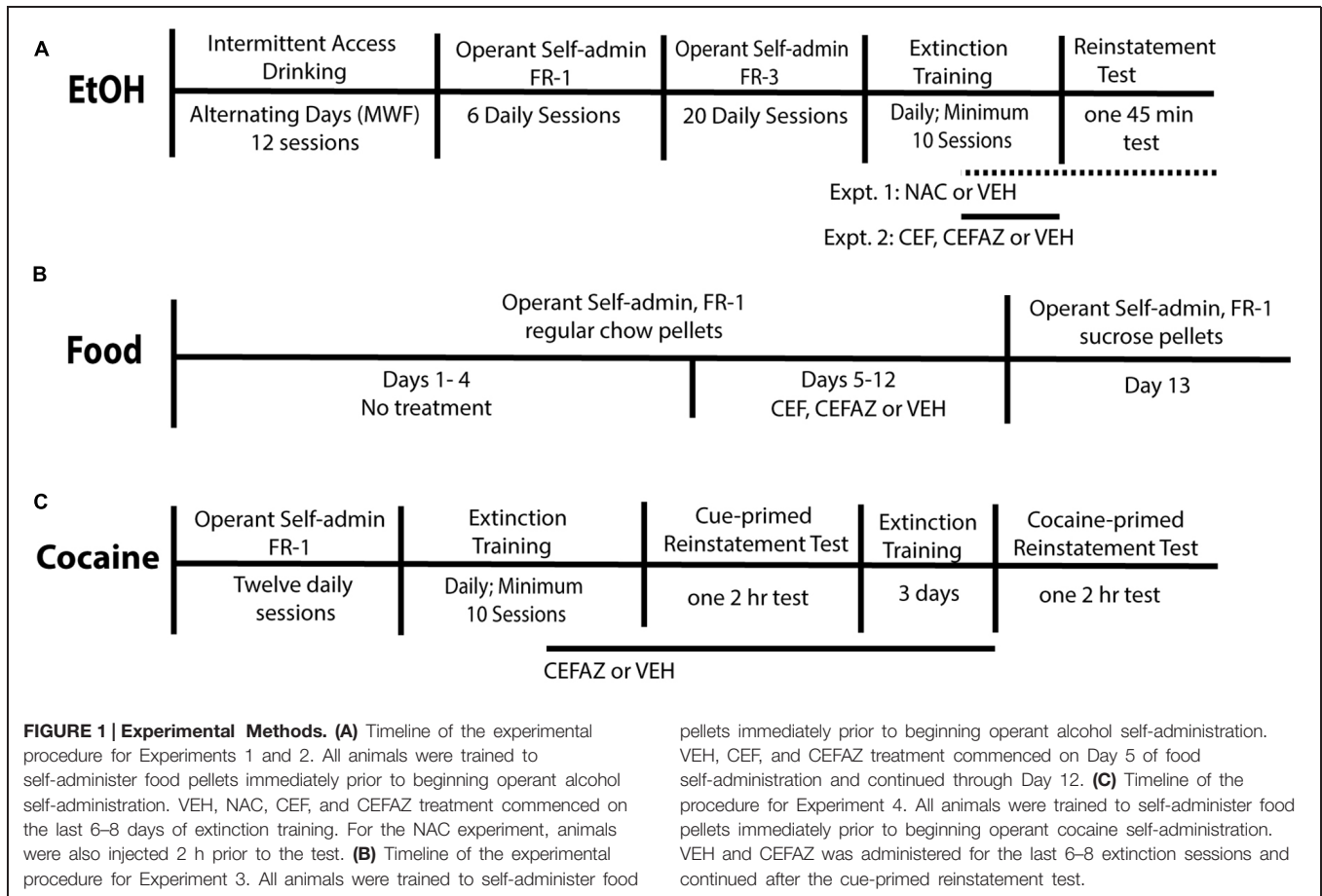
Following exposure to alcohol using the IAA, animals were trained to self-administer 20% alcohol (v/v) using daily 45 min training sessions on an FR-1 schedule of reinforcement for 6 days followed by an FR-3 schedule for 20 daily sessions. This procedure followed that of Simms et al. (2010), with the exception of using 45 min FR-3 operant sessions in place of 30 min sessions and replacing the 12 overnight operant sessions with 12 IAA sessions. Extinction training began following the 20th FR-3 session. During extinction training, presses on the previously active lever no longer provided drug and cue presentation. Extinction training lasted a minimum of 10 sessions and until animals reached the criteria of less than 20 lever responses per session. Once this criteria was reached, animals underwent a 45 min cue-primed reinstatement test during which presses on the previously active lever once again yielded presentation of discrete cues that had been paired with alcohol delivery (stimulus light, tone and the sound of the syringe pump activating). In addition, 2 mL of 20% EtOH was sprinkled on the bedding of the operant chamber to provide an olfactory cue.

Experiment 1

Here, we tested the ability of chronically administered NAC to attenuate the cue-primed reinstatement of alcohol-seeking. *N*-acetylcysteine (Sigma, 30 or 60 mg/kg IP) or vehicle (VEH; saline 0.3 mL IP) was administered 2 h prior to the last 6–8 extinction sessions and prior to the reinstatement test (see **Figure 1A**). The dose and timing of injections was based on previous studies demonstrating the ability of 60 mg/kg NAC to restore basal glutamate levels after cocaine and attenuate cocaine reinstatement when given both acutely prior to testing (Baker et al., 2003) and chronically during extinction training (Amen et al., 2011) while a lower dose (33 mg/kg) only partially inhibits cocaine-seeking (Moussawi et al., 2009). NAC works acutely, within 2 h of administration, to increase basal glutamate by serving as an exogenous source of cysteine, which drives system x_c^- to export more glutamate (Baker et al., 2003), but also alters glutamate homeostasis when administered daily for 5 or more days (Knackstedt et al., 2010; Amen et al., 2011). After reaching extinction criteria, the responding of the NAC-treated animals during a cue-primed reinstatement trial was compared with VEH-treated animals. Animals were assigned to receive NAC or VEH treatment in a counterbalanced manner to ensure no group differences in drug self-administration. One animal was excluded from reinstatement testing (and all data analysis) due to a failure to reach extinction criteria.

Experiment 2

This experiment was carried out in an identical manner to Experiment 1, with the exception that CEF (Hospira, 200 mg/kg



IP), CEFAZ (Sigma, 100 mg/kg IP), or VEH (0.9% saline) were administered immediately following the last 6–8 extinction sessions, but not on test day (see **Figure 1A**). After reaching extinction criteria, the responding of the CEF and CEFAZ-treated animals during a cue-primed reinstatement trial was compared with VEH-treated animals. The dose and timing of CEF injections was based on previously published reports showing that 200 mg/kg effectively attenuates cocaine reinstatement and restores glutamate homeostasis when given chronically *after* extinction sessions for at least 5 days (Knackstedt et al., 2010; Trantham-Davidson et al., 2012). The dose of CEFAZ was based on allometric calculations from the maximum human dose recommended by the manufacturer to the equivalent rat dose of 100 mg/kg maximum and was given after extinction sessions akin to the administration of CEF.

Food and Sucrose Self-Administration (Experiment 3)

Animals self-administered standard chow pellets (45 mg; Bioserv) in the operant chamber using an FR-1 schedule of reinforcement for 2 h/day for 12 days. On the 13th day, sucrose pellets (45 mg; Bioserv) replaced the standard chow pellets. Animals received CEF, CEFAZ, or VEH in an identical manner as described for Experiment 2, with the exception that injections began after the operant session on Day 5 of food self-administration (see **Figure 1B**).

Cocaine Self-Administration, Extinction, and Reinstatement (Experiment 4)

For the implantation of catheters, rats were anesthetized with ketamine HCl (87.5 mg/kg, IM) and xylazine (5 mg/kg, IM). Ketorolac (3 mg/kg, IP) was administered before surgery to provide analgesia. Catheter construction and surgical implantation is described in detail elsewhere (Knackstedt et al., 2014). Rats recovered 6 days after surgery prior to beginning self-administration training. Cocaine self-administration was conducted using an FR-1 schedule; sessions lasted 2 h/day and are described in more detail above. Self-administration continued until subjects had attained 12 days with a minimum of 10 cocaine infusions and was followed by extinction training. Animals were either treated with CEFAZ or VEH in manner identical to that in Experiment 2, immediately following the last 6–8 extinction sessions (see **Figure 1C**). Once extinction criteria was attained, animals were tested for cue- and cocaine-primed reinstatement (each test lasting 2 h), with tests separated by 3 days of extinction training. During cue-primed reinstatement, presses on the previously active lever once again yielded the discrete cues paired with cocaine delivery but no drug was delivered. During cocaine-primed reinstatement, animals were injected with 10 mg/kg cocaine (IP) immediately prior to being placed into the operant chamber; presses on the previously active lever had no consequences during this test.

Data Analysis

The alpha level was set at $p < 0.05$ for all statistical tests, which were conducted using SPSS software. Active lever presses during self-administration and extinction components of the experiment were analyzed with mixed-factorial 2-way analysis of variances (ANOVAs) test, with time as the repeated measure. Reinstatement tests were planned comparisons (extinction vs. test day) and thus were analyzed with paired-sample t -tests. Independent-sample t -tests were used to compare active lever presses during reinstatement tests between treatment groups. Group differences in food self-administration were examined using one-way ANOVAs. Outliers were defined as values more than two standard deviation \pm the mean and were excluded from further analysis. Groups with outlier values are mentioned in the Results section.

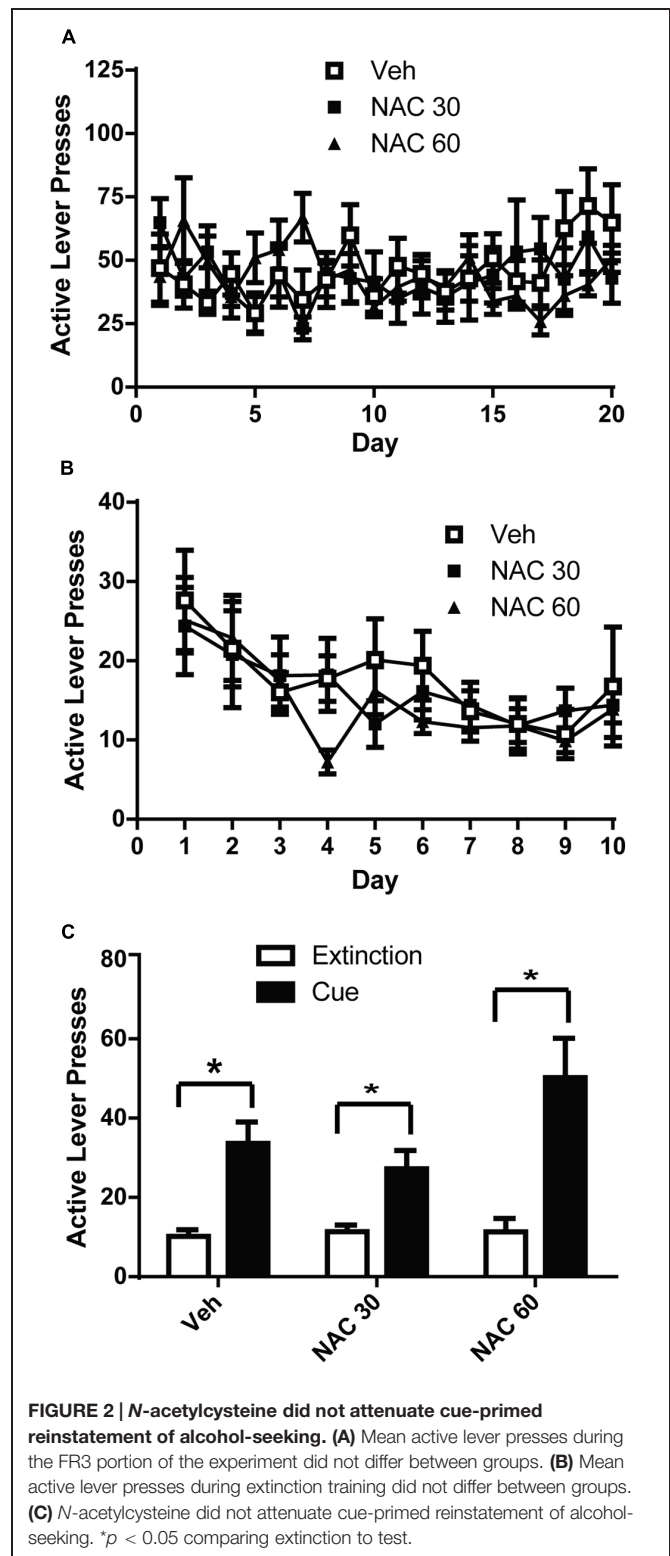
Results

The Effects of NAC on Cue-Primed Reinstatement of Alcohol-Seeking (Experiment 1)

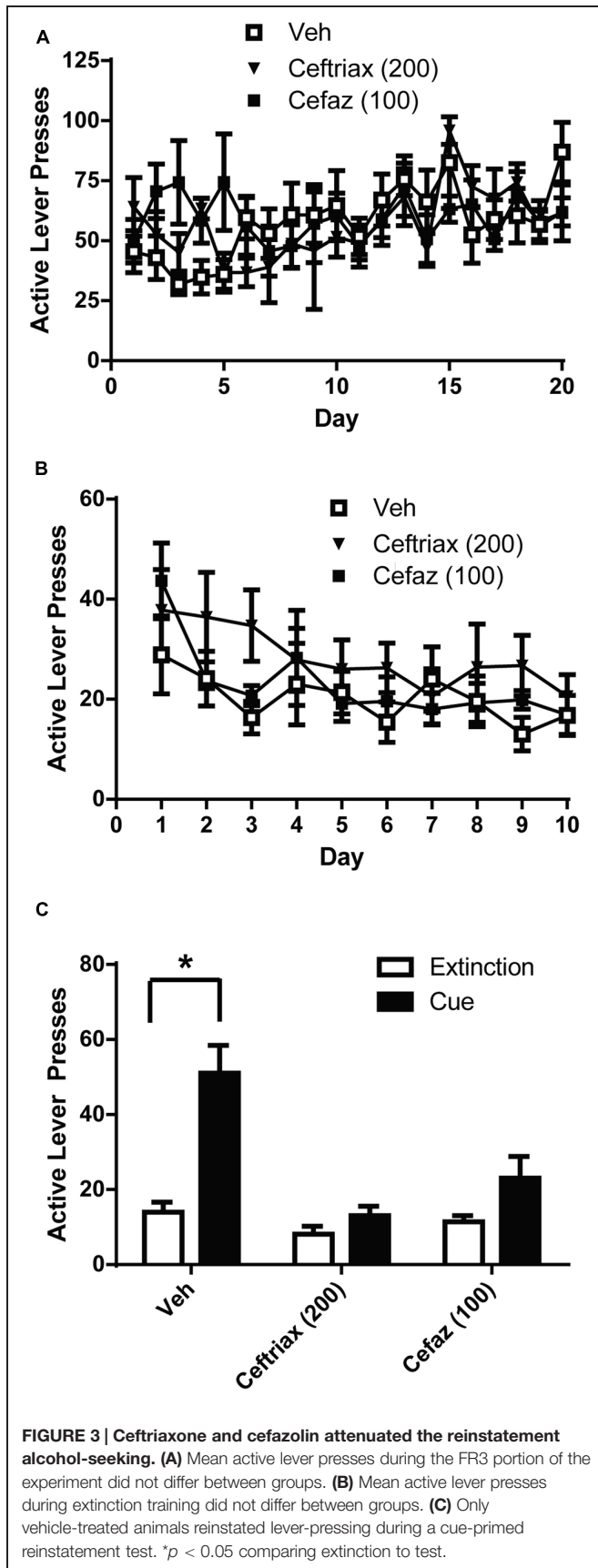
VEH- and NAC-treated groups did not differ in the amount of alcohol self-administered (Figure 2A). A two-way ANOVA with repeated measures on Day was computed on the active lever press data during self-administration and found no significant effect of Day [$F(19,475) = 1.480$, n.s.], or Group [$F(2,25) = 0.080$, n.s.]. There was a significant Day \times Group interaction [$F(19,475) = 2.020$, $p < 0.01$]. Similarly, a two-way ANOVA was computed on the lever presses during extinction training (Figure 2B) and revealed a significant effect of Day [$F(9,225) = 6.977$, $p < 0.001$], but not Group [$F(2,25) = 0.240$, n.s.]. There was not a significant Day \times Group interaction [$F(18,225) = 0.809$, n.s.]. We used paired-sample t -tests to analyze the data presented in Figure 2C to compare active lever presses during cue-primed reinstatement to those during the average of the last 3 days of extinction. Significant differences were found between extinction and cue-primed reinstatement for all treatment groups [Veh: $t(1,7) = 4.036$, $p < 0.01$; NAC60: $t(1,8) = 4.302$, $p < 0.01$; NAC30: $t(1,9) = 3.651$, $p < 0.05$], indicating that neither dose of NAC was able to prevent cue-primed reinstatement of alcohol-seeking.

The Effects of CEF and CEFAZ on Cue-Primed Reinstatement of Alcohol-Seeking (Experiment 2)

Vehicle, CEF, and CEFAZ groups did not differ in the amount of active lever presses during self-administration (Figure 3A). A two-way ANOVA with repeated measures on Day was computed on the active lever presses during alcohol self-administration (Figure 3A) and revealed a significant effect of Day [$F(19,380) = 2.612$, $p < 0.01$], but not Group [$F(2,20) = 0.370$, n.s.]. There was not a significant Day \times Group interaction [$F(19,380) = 1.277$, n.s.]. Similarly, a two-way ANOVA was computed on the number of lever presses during extinction training (Figure 3B) and revealed a significant effect of Day [$F(9,180) = 8.050$,



$p < 0.001$], but not Group [$F(2,20) = 0.989$, n.s.]. There was not a significant Day \times Group interaction [$F(2,180) = 1.249$, n.s.]. We used paired-sample t -tests to compare active lever presses during cue-primed reinstatement to those during the



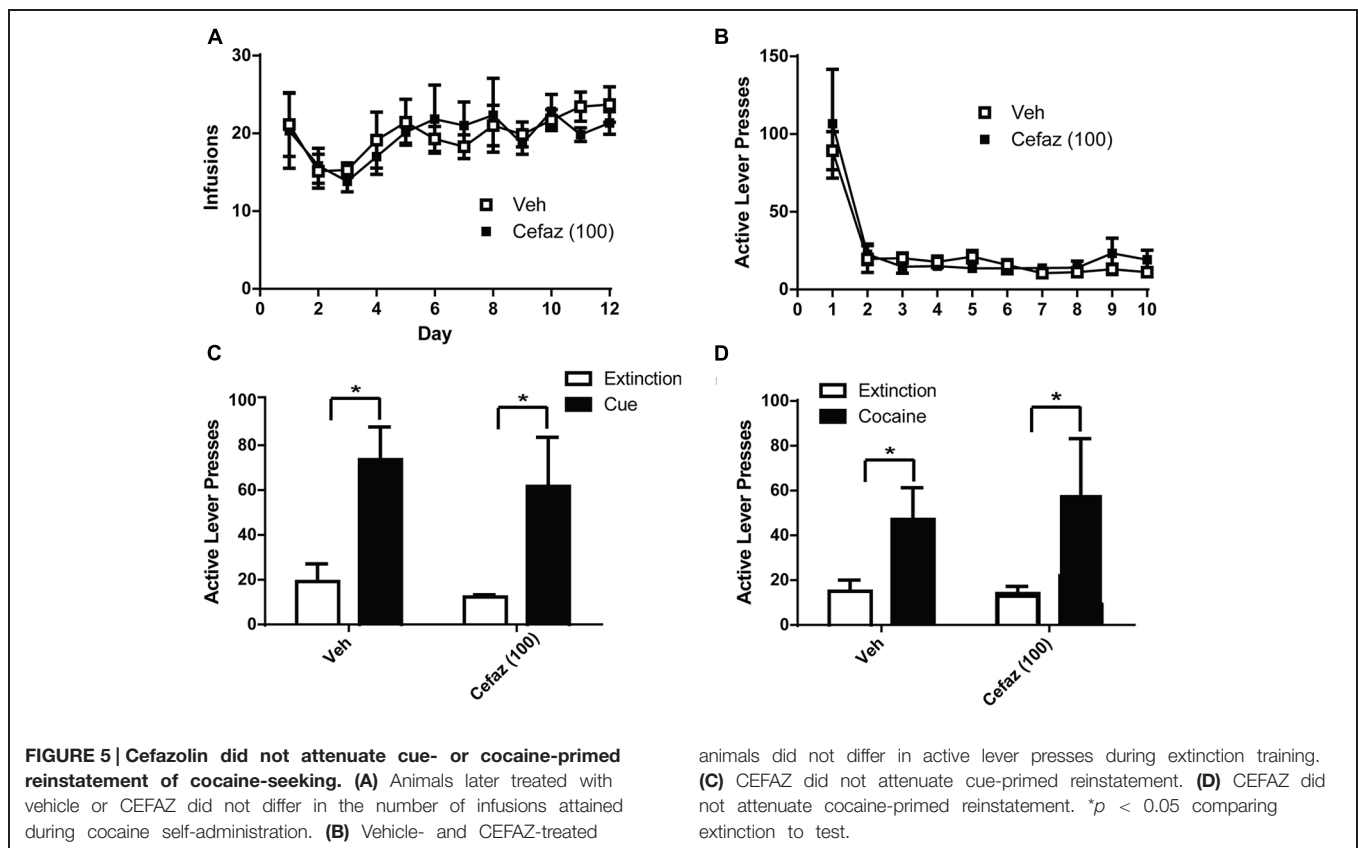
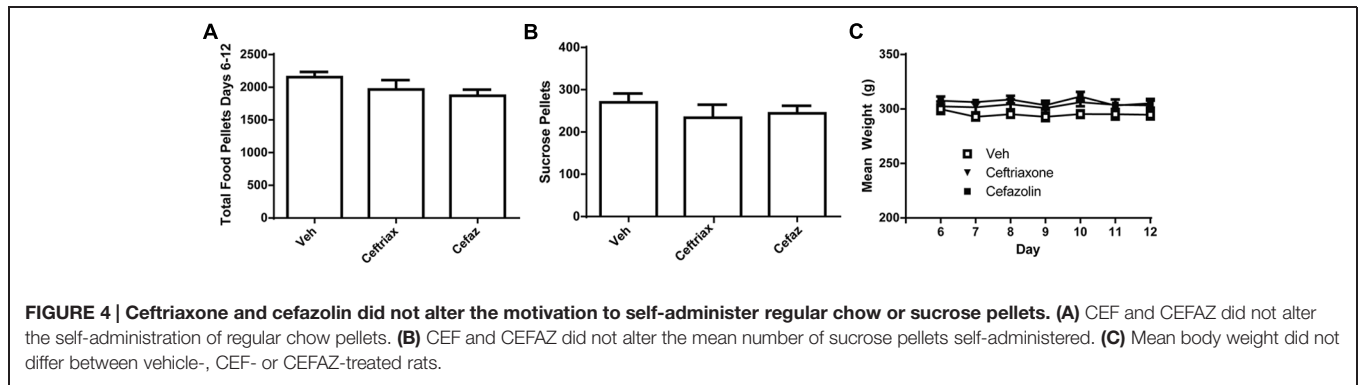
last 3 days of extinction (**Figure 3C**). A significant difference between extinction and cue-primed reinstatement was only observed for vehicle-treated animals [$t(1,8) = 2.892$, $p < 0.05$], indicating that CEF [$t(1,6) = 1.3998$, n.s.] and CEFAZ [$t(1,6) = 2.090$, n.s.] attenuated cue-primed reinstatement of alcohol-seeking.

CEF and CEFAZ Did Not Alter Food and Sucrose Self-Administration or Weight (Experiment 3)

Because CEF and CEFAZ treatment commenced following the session on Day 5, statistical analyses were conducted only on the data during the period of antibiotic (or vehicle) treatment (Days 6–12). One animal was excluded from data analysis because his lever pressing on Day 13 was greater than two standard deviations from the mean value. A one-ANOVA was computed on active lever presses during self-administration and revealed no effect of treatment group [$F(2,17) = 2.128$, n.s.; **Figure 4A**]. We also conducted a two-way ANOVA with repeated measures on Day and this analysis revealed no significant effects [Day: $F(6,102) = 1.963$, n.s.; Day \times Group: $F(12,102) = 1.375$, n.s.; Group: $F(2,17) = 2.361$, n.s.]. A one-way ANOVA was used to determine if there were group differences in the number of sucrose pellets earned on Day 13 of the experiment (**Figure 4B**) and found no effect [$F(2,17) = 1.068$, n.s.]. There was also no difference in weight over time between the three treatment groups (**Figure 4C**). A two-way RM ANOVA found an effect of Day [$F(11,102) = 9.145$, $p < 0.001$] but no Day \times Group interaction [$F(12,102) = 2.507$, n.s.] or effect of Group [$F(2,17) = 1.924$, n.s.] on animal weight.

CEFAZ Did Not Attenuate the Reinstatement of Cocaine-Seeking (Experiment 4)

A two-way ANOVA computed on the amount of cocaine intake (**Figure 5A**) revealed no group differences [$F(1,12) = 0.357$, n.s.], no effect of Day [$F(11,132) = 1.562$, n.s.], and no Day \times Group interaction [$F(12,132) = 0.453$, n.s.]. There were also no group differences in extinction training [$F(1,12) = 0.472$, n.s.] and no Day \times Group interaction [$F(12,108) = 0.696$, n.s.] but there was an effect of Day [$F(9,108) = 19.076$, $p < 0.001$] as both groups decreased lever pressing during the course of training (**Figure 5B**). Paired-sample t -tests revealed significant differences between extinction and cue-primed reinstatement for both CEFAZ [$t(1,5) = 2.834$, $p < 0.05$] and vehicle-treated [$t(1,7) = 4.453$, $p < 0.01$] animals (**Figure 5C**). Paired-sample t -tests revealed significant differences between extinction and cocaine-primed reinstatement for both CEFAZ [$t(1,5) = 2.834$, $p < 0.05$] and vehicle-treated [$t(1,7) = 2.614$, $p < 0.05$] animals (**Figure 5D**). Thus, CEFAZ did not attenuate cue- or cocaine-primed reinstatement. Furthermore, an independent sample t -test showed no lever pressing differences between vehicle- and CEFAZ-treated groups during the cue [$t(1,12) = 0.272$, n.s.] and cocaine tests [$t(1,12) = 0.269$, n.s.].



Discussion

Here, we demonstrated that training Sprague-Dawley rodents to self-administer unsweetened alcohol in the operant chamber can be accomplished using daily training sessions without lengthy (14 h; e.g., Simms et al., 2010) operant sessions on alternating days. This is the first demonstration of such an effect in the Sprague-Dawley strain. Augier et al. (2014) recently demonstrated the same effect in Wistar rats. Using the procedure outlined here (Figure 1A) reduced the time to complete the experiment by 4 weeks relative to a procedure utilizing intermittent (MWF) operant sessions (e.g., Simms et al., 2010). This represents a significant conservation of lab resources.

We used this operant procedure to investigate the ability of NAC, CEF, and CEFAZ to attenuate cue-primed reinstatement. Five days of NAC treatment (30 or 60 mg/kg) did not attenuate cue-primed reinstatement (Figure 2C). We found that chronic CEF (200 mg/kg) and CEFAZ (100 mg/kg) attenuated cue-primed reinstatement of alcohol-seeking (Figure 3C). Both NAC and CEF attenuate cocaine and heroin reinstatement (Baker et al., 2003; Zhou and Kalivas, 2008; Knackstedt et al., 2010; Reichel et al., 2011; Sondheimer and Knackstedt, 2011; Shen et al., 2014). Furthermore, both compounds have been documented to similarly restore glutamate homeostasis in the NAC following cocaine (see Table 1). Both compounds increase GLT-1 and system x_c^-/xCT expression and function (Knackstedt et al., 2010; Trantham-Davidson et al., 2012), increase basal glutamate

TABLE 1 | Summary of *N*-acetylcysteine and ceftriaxone effects on cocaine-induced adaptations in the nucleus accumbens.

Post-cocaine adaptation	Compound	
	<i>N</i> -acetylcysteine	Ceftriaxone
Restore (elevate) basal glutamate	Yes Baker et al. (2003)	Yes Trantham-Davidson et al. (2012)
Prevent glutamate release during cocaine relapse	Yes Baker et al. (2003)	Yes Trantham-Davidson et al. (2012)
Increase GLT-1 expression/function	Yes (expression) Knackstedt et al. (2010) function not assessed	Yes Knackstedt et al. (2010), Trantham-Davidson et al. (2012)
Increase xCT expression/system xc- function	Yes Baker et al. (2003), Knackstedt et al. (2010)	Yes Knackstedt et al. (2010), Trantham-Davidson et al. (2012)
Stimulate mGluR2/3 function	Yes Moussawi et al. (2011)	Not yet assessed
Normalize potentiated accumbens synapses	Yes Moussawi et al. (2011)	Yes Trantham-Davidson et al. (2012)

levels (Baker et al., 2003; Trantham-Davidson et al., 2012), and normalize potentiated glutamate synapses (Moussawi et al., 2011; Trantham-Davidson et al., 2012). Because CEF and NAC modulate post-cocaine glutamate homeostasis in similar manner, and the present results reveal a dissociation between the ability of the compounds to attenuate alcohol reinstatement, CEF and CEFAZ likely attenuate alcohol reinstatement via a glutamate-independent mechanism.

Cefazolin has been shown to reduce GABA_A transmission (Yamazaki et al., 2002; Sugimoto et al., 2003). Positive allosteric modulation of GABA_A enhances reinstatement of alcohol-seeking (Finn et al., 2008; Ramaker et al., 2014) and thus a reduction in GABA transmission by CEFAZ may be the mechanism of action by which it reduces alcohol reinstatement. CEF has not been fully evaluated for its ability to alter GABA transmission although one report exists showing that it does not alter GABA_A receptor binding in the hippocampus or frontal and parietal cortices (Inui et al., 2013). CEFAZ has not been demonstrated to alter glutamate transmission: it does not alter NMDA function (Yamazaki et al., 2002; Sugimoto et al., 2003) and was not determined to potently induce GLT-1 expression as do CEF and penicillin (Rothstein et al., 2005). The data presented in **Figures 5C,D** provide evidence that CEFAZ does not alter cue- or cocaine-primed reinstatement of cocaine-seeking. Thus, the mechanism by which CEFAZ attenuates alcohol reinstatement likely does not involve modulation of glutamate neurotransmission in the NAs.

Ceftriaxone and CEFAZ are antibiotics and have the potential to produce gastrointestinal distress upon chronic administration. Oral alcohol self-administration in rodents and even alcohol-seeking during cue-primed reinstatement tests may be impacted by this side-effect. Thus we sought to determine the

effects of these antibiotics on the operant self-administration of regular chow and sucrose pellets. We found no effect of either antibiotic on the self-administration of chow (**Figure 4A**) or sucrose (**Figure 4B**) pellets or on body weight during the course of CEF and CEFAZ injections (**Figure 4C**). These findings are in agreement with those of Ward et al. (2011) who found no effect of CEF on the self-administration of sweet food in mice. Interestingly, the chronic administration of NAC, which did not attenuate alcohol-seeking here, has been demonstrated to reduce operant self-administration of regular chow (Ramirez-Niño et al., 2013). Thus, we can conclude that the ability of CEF and CEFAZ to attenuate cue-primed alcohol-seeking is likely not dependent on any gastrointestinal side-effects of these compounds.

Because CEFAZ had no impact on cocaine reinstatement (**Figure 5C**), it may not be capable of restoring glutamate homeostasis after cocaine. Thus, this is not likely the mechanism by which CEF and CEFAZ attenuate cue-primed reinstatement of alcohol-seeking. In support of this, NAC, which does alter glutamate homeostasis, did not attenuate cue-primed alcohol-seeking. This conclusion is surprising in light of the evidence supporting glutamate signaling in this behavior. In alcohol-preferring (P) rats, CEF reduces the consumption of alcohol acutely and after a period of withdrawal (Sari et al., 2013; Alhaddad et al., 2014). In P rats, the ability of CEF to modulate alcohol-seeking was accompanied by increases in GLT-1 and xCT (Sari et al., 2013; Alhaddad et al., 2014). These results indicate that the modulation of glutamate homeostasis may be the mechanism by which CEF attenuates alcohol consumption, at least in P rats. However, the increased expression of these proteins was not shown to be the mechanism by which CEF exerted its behavioral effects. An alternative explanation for the failure of NAC to attenuate alcohol reinstatement in the present manuscript is that the operationalization of the alcohol-seeking response may have altered the underlying neurobiology of alcohol-seeking, rendering the manipulation of GLT-1 and xCT (and thereby glutamate levels) ineffective at preventing reinstatement.

The lack of an effect of NAC on alcohol-seeking here does not discount the involvement of glutamate in alcohol reinstatement. Antagonism of the post-synaptic mGluR5 and AMPA receptors attenuates cue-induced reinstatement (Backstrom and Hyttia, 2004; Backstrom et al., 2004; Sanchis-Segura et al., 2006; Sinclair et al., 2012). Stimulating the pre-synaptic glutamate autoreceptor mGluR2/3 also attenuates cue-induced reinstatement of alcohol-seeking (Zhao et al., 2006), presumably by decreasing pre-synaptic glutamate release. While both cocaine and alcohol reinstatement are driven by synaptic glutamate release in the NA core during the reinstatement event (McFarland et al., 2003; Gass et al., 2011) and NAC and CEF attenuate that increase during *cocaine* reinstatement (Baker et al., 2003; Trantham-Davidson et al., 2012), NAC (and potentially CEF) may not be able to attenuate glutamate release during *alcohol* reinstatement. The reason for this may be that cocaine and alcohol have opposite effects on basal glutamate levels in the NA core. Cocaine decreases (Baker et al., 2003) while alcohol increases (Melendez et al., 2005; Griffin Iii et al., 2013) basal glutamate levels. Both NAC and CEF increase basal glutamate levels after cocaine but not in drug-naïve animals

(Baker et al., 2003; Trantham-Davidson et al., 2012). After NAC treatment, this increased basal glutamate derived from system x_c - restores tone on mGluR2/3 autoreceptors (Moussawi et al., 2011), thereby restoring the ability of these receptors to exert negative feedback on glutamate release during reinstatement. It is possible that increased basal glutamate following alcohol also causes a failure in mGluR2/3 signaling that is insensitive to NAC treatment. The effects of CEF on mGluR2/3 function have not yet been investigated (see **Table 1**). Future experiments examining basal glutamate levels 2–3 weeks after cessation of alcohol self-administration in combination with NAC and CEF would provide valuable data regarding the potential value in manipulating basal glutamate to treat alcohol relapse.

Overall, these results indicate that training Sprague-Dawley rats to self-administer alcohol in the operant chamber

can be accomplished without sucrose fading and by using daily training sessions without lengthy operant sessions. We found that modulating glutamate homeostasis likely will not represent a successful treatment strategy for preventing relapse to alcohol-seeking. Future studies should investigate GABA modulation as a potential mechanism of action for CEF and as a method of attenuating alcohol relapse.

Acknowledgments

This project was funded by a pilot award from the Charleston Alcohol Research Center (P50 AA010761) and NIDA R01 DA033436, both awarded to LK.

References

- Alhaddad, H., Das, S. C., and Sari, Y. (2014). Effects of CEF on alcohol intake: a possible role for xCT and $GLT-1$ isoforms modulation of glutamate levels in P rats. *Psychopharmacology* 231, 4049–4057. doi: 10.1007/s00213-014-3545-y
- Amen, S. L., Piacentini, L. B., Ahmad, M. E., Li, S. J., Mantsch, J. R., Risinger, R. C., et al. (2011). Repeated *N*-acetylcysteine reduces cocaine seeking in rodents and craving in cocaine-dependent humans. *Neuropsychopharmacology* 36, 871–878. doi: 10.1038/npp.2010.226
- Augier, E., Flanigan, M., Dulman, R. S., Pincus, A., Schank, J. R., Rice, K. C., et al. (2014). Wistar rats acquire and maintain self-administration of 20% ethanol without water deprivation, saccharin/sucrose fading, or extended access training. *Psychopharmacology* 231, 4561–4568. doi: 10.1007/s00213-014-3605-3
- Avena, N. M., Rada, P., and Hoebel, B. G. (2008). Evidence for sugar addiction: behavioral and neurochemical effects of intermittent, excessive sugar intake. *Neurosci. Biobehav. Rev.* 32, 20–39. doi: 10.1016/j.neubiorev.2007.04.019
- Backstrom, P., Bachteler, D., Koch, S., Hyytia, P., and Spanagel, R. (2004). mGluR5 antagonist MPEP reduces ethanol-seeking and relapse behavior. *Neuropsychopharmacology* 29, 921–928. doi: 10.1038/sj.npp.1300381
- Backstrom, P., and Hyytia, P. (2004). Iontropic glutamate receptor antagonists modulate cue-induced reinstatement of ethanol-seeking behavior. *Alcohol. Clin. Exp. Res.* 28, 558–565. doi: 10.1097/01.ALC.0000122101.13164.21
- Baker, D. A., McFarland, K., Lake, R. W., Shen, H., Tang, X. C., Toda, S., et al. (2003). Neuroadaptations in cystine-glutamate exchange underlie cocaine relapse. *Nat. Neurosci.* 6, 743–749. doi: 10.1038/nn1069
- Baker, D. A., Tran-Nguyen, T. L., Fuchs, R. A., and Neisewander, J. L. (2001). Influence of individual differences and chronic fluoxetine treatment on cocaine-seeking behavior in rats. *Psychopharmacology* 155, 18–26. doi: 10.1007/s002130000676
- Baker, D. A., Xi, Z. X., Shen, H., Swanson, C. J., and Kalivas, P. W. (2002). The origin and neuronal function of in vivo nonsynaptic glutamate. *J. Neurosci.* 22, 9134–9141.
- Bongiovanni, M., and See, R. E. (2008). A comparison of the effects of different operant training experiences and dietary restriction on the reinstatement of cocaine-seeking in rats. *Pharmacol. Biochem. Behav.* 89, 227–233. doi: 10.1016/j.pbb.2007.12.019
- Carrillo, J., Howard, E. C., Moten, M., Houck, B. D., Czachowski, C. L., and Gonzales, R. A. (2008). A 3-day exposure to 10% ethanol with 10% sucrose successfully initiates ethanol self-administration. *Alcohol* 42, 171–178. doi: 10.1016/j.alcohol.2008.01.005
- Colantuoni, C., Rada, P., McCarthy, J., Patten, C., Avena, N. M., Chadeayne, A., et al. (2002). Evidence that intermittent, excessive sugar intake causes endogenous opioid dependence. *Obes. Res.* 10, 478–488. doi: 10.1038/oby.2002.66
- Deroche, V., Le Moal, M., and Piazza, P. V. (1999). Cocaine self-administration increases the incentive motivational properties of the drug in rats. *Eur. J. Neurosci.* 11, 2731–2736. doi: 10.1046/j.1460-9568.1999.00696.x
- Epstein, D. H., Preston, K. L., Stewart, J., Shaham, Y. (2006). Toward a model of drug relapse: an assessment of the validity of the reinstatement procedure. *Psychopharmacology (Berl)* 189, 1–16. doi: 10.1007/s00213-006-0529-6
- Finn, D. A., Mark, G. P., Fretwell, A. M., Gililand-Kaufman, K. R., Strong, M. N., and Ford, M. M. (2008). Reinstatement of ethanol and sucrose seeking by the neurosteroid allopregnanolone in C57BL/6 mice. *Psychopharmacology* 201, 423–433. doi: 10.1007/s00213-008-1303-8
- Gass, J. T., Sinclair, C. M., Clewa, R. M., Widholm, J. J., and Olive, M. F. (2011). Alcohol-seeking behavior is associated with increased glutamate transmission in basolateral amygdala and nucleus accumbens as measured by glutamate-oxidase-coated biosensors. *Addict. Biol.* 16, 215–228. doi: 10.1111/j.1369-1600.2010.00262.x
- Griffin, W. C. III., Haun, H. L., Hazelbaker, C. L., Ramachandra, V. S., and Becker, H. C. (2013). Increased extracellular glutamate in the nucleus accumbens promotes excessive ethanol drinking in ethanol dependent mice. *Neuropsychopharmacology* 39, 707–717. doi: 10.1038/npp.2013.256
- Heilig, M., and Egli, M. (2006). Pharmacological treatment of alcohol dependence; target symptoms and target mechanisms. *Pharmacol. Ther.* 111, 855–876. doi: 10.1016/j.pharmthera.2006.02.001
- Inui, T., Alessandri, B., Heimann, A., Nishimura, F., Frauenknecht, K., Sommer, C., et al. (2013). Neuroprotective effect of CEF on the penumbra in a rat venous ischemia model. *Neuroscience* 242, 1–10. doi: 10.1016/j.neuroscience.2013.03.018
- Janak, P. H., and Michael Gill, T. (2003). Comparison of the effects of allopregnanolone with direct GABAergic agonists on ethanol self-administration with and without concurrently available sucrose. *Alcohol* 30, 1–7. doi: 10.1016/S0741-8329(03)00068-5
- Kalivas, P. W., Lalumiere, R. T., Knackstedt, L., and Shen H. (2009). Glutamate transmission in addiction. *Neuropharmacology* 56(Suppl. 1), 169–173. doi: 10.1016/j.neuropharm.2008.07.011
- Kenna, G. A., McGeary, J. E., and Swift, R. M. (2004). Pharmacotherapy, pharmacogenomics, and the future of alcohol dependence treatment, Part 2. *Am. J. Health Syst. Pharm.* 61, 2380–2388.
- Knackstedt, L. A., and Kalivas, P. W. (2009). Glutamate and reinstatement. *Curr. Opin. Pharmacol.* 9, 59–64. doi: 10.1016/j.coph.2008.12.003
- Knackstedt, L. A., Melendez, R. I., and Kalivas, P. W. (2010). CEF restores glutamate homeostasis and prevents relapse to cocaine seeking. *Biol. Psychiatry* 67, 81–84. doi: 10.1016/j.biopsych.2009.07.018
- Knackstedt, L. A., Trantham-Davidson, H., and Schwendt, M. (2014). The role of ventral and dorsal striatum mGluR5 in relapse to cocaine-seeking and extinction learning. *Addict. Biol.* 19, 87–101. doi: 10.1111/adb.12061
- Koob, G. F., and Weiss, F. (1990). Pharmacology of drug self-administration. *Alcohol* 7, 193–197. doi: 10.1016/0741-8329(90)90004-V
- Lee, S. G., Su, Z. Z., Emdad, L., Gupta, P., Sarkar, D., Borjabad, A., et al. (2008). Mechanism of ceftriaxone induction of excitatory amino acid transporter-2

- expression and glutamate uptake in primary human astrocytes. *J. Biol. Chem.* 283, 13116–13123. doi: 10.1074/jbc.M707697200
- Lewerenz, J., Albrecht, P., Tien, M. L., Henke, N., Karumbayaram, S., Kornblum, H. I., et al. (2009). Induction of Nrf2 and xCT are involved in the action of the neuroprotective antibiotic ceftriaxone in vitro. *J. Neurochem.* 111, 332–343. doi: 10.1111/j.1471-4159.2009.06347.x
- McBride, W. J., and Li, T. K. (1998). Animal models of alcoholism: neurobiology of high alcohol-drinking behavior in rodents. *Crit. Rev. Neurobiol.* 12, 339–369. doi: 10.1615/CritRevNeurobiol.v12.i4.40
- McFarland, K., Lapish, C. C., and Kalivas, P. W. (2003). Prefrontal glutamate release into the core of the nucleus accumbens mediates cocaine-induced reinstatement of drug-seeking behavior. *J. Neurosci.* 23, 3531–3537.
- Meisch, R. A., and Thompson, T. (1972). Ethanol intake during schedule-induced polydipsia. *Physiol. Behav.* 8, 471–475. doi: 10.1016/0031-9384(72)90331-9
- Melendez, R. I., Hicks, M. P., Cagle, S. S., and Kalivas, P. W. (2005). Ethanol exposure decreases glutamate uptake in the nucleus accumbens. *Alcohol. Clin. Exp. Res.* 29, 326–333. doi: 10.1097/01.ALC.0000156086.65665.4D
- Moussawi, K., Pacchioni, A., Moran, M., Olive, M. F., Gass, J. T., Lavin, A., et al. (2009). N-Acetylcysteine reverses cocaine-induced metaplasticity. *Nat. Neurosci.* 12, 182–189. doi: 10.1038/nn.2250
- Moussawi, K., Zhou, W., Shen, H., Reichel, C. M., See, R. E., Carr, D. B., et al. (2011). Reversing cocaine-induced synaptic potentiation provides enduring protection from relapse. *Proc. Natl. Acad. Sci. U.S.A.* 108, 385–390. doi: 10.1073/pnas.1011265108
- Nie, H., and Janak, P. H. (2003). Comparison of reinstatement of ethanol- and sucrose-seeking by conditioned stimuli and priming injections of allopregnanolone after extinction in rats. *Psychopharmacology* 168, 222–228. doi: 10.1007/s00213-003-1468-0
- NIH. (2006). “National epidemiologic survey on alcohol and related conditions: 2001–2002. Alcohol use and alcohol use disorders in the United States,” in *Alcohol Epidemiologic Data Reference Manual*, Vol. 8 (Bethesda, MD: National Institute on Alcohol Abuse and Alcoholism).
- Pinel, J. P., and Huang, E. (1976). Effects of periodic withdrawal on ethanol and saccharin selection in rats. *Physiol. Behav.* 16, 693–698. doi: 10.1016/0031-9384(76)90238-9
- Ramaker, M. J., Ford, M. M., Phillips, T. J., and Finn, D. A. (2014). Differences in the reinstatement of ethanol seeking with ganaxolone and gaboxadol. *Neuroscience* 272, 180–187. doi: 10.1016/j.neuroscience.2014.04.065
- Ramirez-Niño, A. M., D’Souza, M. S., and Markou, A. (2013). N-acetylcysteine decreased nicotine self-administration and cue-induced reinstatement of nicotine seeking in rats: comparison with the effects of N-acetylcysteine on food responding and food seeking. *Psychopharmacology* 225, 473–482. doi: 10.1007/s00213-012-2837-3
- Reichel, C. M., Moussawi, K., Do, P. H., Kalivas, P. W., and See, R. E. (2011). Chronic N-acetylcysteine during abstinence or extinction after cocaine self-administration produces enduring reductions in drug seeking. *J. Pharmacol. Exp. Ther.* 337, 487–493. doi: 10.1124/jpet.111.179317
- Rothstein, J. D., Patel, S., Regan, M. R., Haenggeli, C., Huang, Y. H., Bergles, D. E., et al. (2005). Beta-lactam antibiotics offer neuroprotection by increasing glutamate transporter expression. *Nature* 433, 73–77. doi: 10.1038/nature03180
- Samson, H. H. (1986). Initiation of ethanol reinforcement using a sucrose-substitution procedure in food- and water-sated rats. *Alcohol. Clin. Exp. Res.* 10, 436–442. doi: 10.1111/j.1530-0277.1986.tb05120.x
- Samson, H. H., Files, F. J., Denning, C., and Marvin, S. (1998). Comparison of ethanol-preferring and nonpreferring selectively bred rat lines. I. Ethanol initiation and limited access operant self-administration. *Alcohol. Clin. Exp. Res.* 22, 2133–2146. doi: 10.1111/j.1530-0277.1998.tb05927.x
- Samson, H. H., Sharpe, A. L., and Denning, C. (1999). Initiation of ethanol self-administration in the rat using sucrose substitution in a sipper-tube procedure. *Psychopharmacology* 147, 274–279. doi: 10.1007/s002130051167
- Samson, H. H., Tolliver, G. A., Pfeffer, A. O., Sadeghi, K. G., and Mills, F. G. (1987). Oral ethanol reinforcement in the rat: effect of the partial inverse benzodiazepine agonist RO15-4513. *Pharmacol. Biochem. Behav.* 27, 517–519. doi: 10.1016/0091-3057(87)90357-1
- Sanchis-Segura, C., Borchardt, T., Vengeliene, V., Zghoul, T., Bachteler, D., Gass, P., et al. (2006). Involvement of the AMPA receptor GluR-C subunit in alcohol-seeking behavior and relapse. *J. Neurosci.* 26, 1231–1238. doi: 10.1523/JNEUROSCI.4237-05.2006
- Sari, Y., Sreemantula, S. N., Lee, M. R., and Choi, D. S. (2013). CEF treatment affects the levels of GLT1 and ENT1 as well as ethanol intake in alcohol-preferring rats. *J. Mol. Neurosci.* 51, 779–787. doi: 10.1007/s12031-013-0064-y
- Shen, H. W., Scofield, M. D., Boger, H., Hensley, M., and Kalivas, P. W. (2014). Synaptic glutamate spillover due to impaired glutamate uptake mediates heroin relapse. *J. Neurosci.* 34, 5649–5657. doi: 10.1523/JNEUROSCI.4564-13.2014
- Simms, J. A., Bito-Onon, J. J., Chatterjee, S., and Bartlett, S. E. (2010). Long-Evans rats acquire operant self-administration of 20% ethanol without sucrose fading. *Neuropsychopharmacology* 35, 1453–1463. doi: 10.1038/npp.2010.15
- Simms, J. A., Steensland, P., Medina, B., Abernathy, K. E., Chandler, L. J., Wise, R., et al. (2008). Intermittent access to 20% ethanol induces high ethanol consumption in Long-Evans and Wistar rats. *Alcohol. Clin. Exp. Res.* 32, 1816–1823. doi: 10.1111/j.1530-0277.2008.00753.x
- Sinclair, C. M., Cleva, R. M., Hood, L. E., Olive, M. F., and Gass, J. T. (2012). mGluR5 receptors in the basolateral amygdala and nucleus accumbens regulate cue-induced reinstatement of ethanol-seeking behavior. *Pharmacol. Biochem. Behav.* 101, 329–335. doi: 10.1016/j.pbb.2012.01.014
- Sondheimer, I., and Knackstedt, L. A. (2011). CEF prevents the induction of cocaine sensitization and produces enduring attenuation of cue- and cocaine-primed reinstatement of cocaine-seeking. *Behav. Brain Res.* 225, 252–258. doi: 10.1016/j.bbr.2011.07.041
- Soyka, M., and Roesner, S. (2006). New pharmacological approaches for the treatment of alcoholism. *Expert Opin. Pharmacother.* 7, 2341–2353. doi: 10.1517/14656566.7.17.2341
- Sugimoto, M., Uchida, I., Mashimo, T., Yamazaki, S., Hatano, K., Ikeda, F., et al. (2003). Evidence for the involvement of GABA(A) receptor blockade in convulsions induced by cephalosporins. *Neuropharmacology* 45, 304–314. doi: 10.1016/S0028-3908(03)00188-6
- Trantham-Davidson, H., LaLumiere, R. T., Reissner, K. J., Kalivas, P. W., and Knackstedt, L. A. (2012). CEF normalizes nucleus accumbens synaptic transmission, glutamate transport, and export following cocaine self-administration and extinction training. *J. Neurosci.* 32, 12406–12410. doi: 10.1523/JNEUROSCI.1976-12.2012
- Vacca, G., Serra, S., Brunetti, G., Carai, M. A., Samson, H. H., Gessa, G. L., et al. (2002). Operant self-administration of ethanol in sardinian alcohol-preferring rats. *Alcohol. Clin. Exp. Res.* 26, 1678–1685. doi: 10.1111/j.1530-0277.2002.tb02470.x
- Walker, B. M., and Koob, G. F. (2007). The gamma-aminobutyric acid-B receptor agonist baclofen attenuates responding for ethanol in ethanol-dependent rats. *Alcohol. Clin. Exp. Res.* 31, 11–18. doi: 10.1111/j.1530-0277.2006.00259.x
- Walker, B. M., Rasmussen, D. D., Raskind, M. A., and Koob, G. F. (2008). Alpha 1-noradrenergic receptor antagonism blocks dependence-induced increases in responding for ethanol. *Alcohol* 42, 91–97. doi: 10.1016/j.alcohol.2007.12.002
- Ward, S. J., Rasmussen, B. A., Corley, G., Henry, C., Kim, J. K., Walker, E. A., et al. (2011). Beta-lactam antibiotic decreases acquisition of and motivation to respond for cocaine, but not sweet food, in C57Bl/6 mice. *Behav. Pharmacol.* 22, 370–373. doi: 10.1097/FBP.0b013e3283473c10
- Wayner, M. J., and Greenberg, I. (1972). Effects of hypothalamic stimulation, acclimation and periodic withdrawal on ethanol consumption. *Physiol. Behav.* 9, 737–740. doi: 10.1016/0031-9384(72)90043-1
- Wise, R. A. (1973). Voluntary ethanol intake in rats following exposure to ethanol on various schedules. *Psychopharmacologia* 29, 203–210. doi: 10.1007/BF00414034

- Yamazaki, S., Mochizuki, Y., Terai, T., Sugimoto, M., Uchida, I., Matsuoka, N., et al. (2002). Intracerebroventricular injection of the antibiotic cefoselis produces convulsion in mice via inhibition of GABA receptors. *Pharmacol. Biochem. Behav.* 74, 53–59. doi: 10.1016/S0091-3057(02)00947-4
- Zhao, Y., Dayas, C. V., Aujla, H., Baptista, M. A., Martin-Fardon, R., and Weiss, F. (2006). Activation of group II metabotropic glutamate receptors attenuates both stress and cue-induced ethanol-seeking and modulates c-fos expression in the hippocampus and amygdala. *J. Neurosci.* 26, 9967–9974. doi: 10.1523/JNEUROSCI.2384-06.2006
- Zhou, W., and Kalivas, P. W. (2008). N-acetylcysteine reduces extinction responding and induces enduring reductions in cue- and heroin-induced drug-seeking. *Biol. Psychiatry* 63, 338–340. doi: 10.1016/j.biopsych.2007.06.008

Conflict of Interest Statement: The Reviewer Jamie Peters declares that, despite being affiliated to the same institution as the author Ana Weiland, the review process was handled objectively and no conflict of interest exists. The authors declare that the research was conducted in the absence of any commercial or financial relationships that could be construed as a potential conflict of interest.

Copyright © 2015 Weiland, Garcia and Knackstedt. This is an open-access article distributed under the terms of the Creative Commons Attribution License (CC BY). The use, distribution or reproduction in other forums is permitted, provided the original author(s) or licensor are credited and that the original publication in this journal is cited, in accordance with accepted academic practice. No use, distribution or reproduction is permitted which does not comply with these terms.