



Functional Magnetic Resonance Urography in Ureteropelvic Junction Obstruction: Proposal for a Pediatric Quantitative Score

Maria Beatrice Damasio¹, Fiammetta Sertorio^{1*}, Michela Cing Yu Wong², Irene Campo³, Marcello Carlucci², Luca Basso¹, Lorenzo Anfigeno^{1,4}, Monica Bodria⁵, Angela Pistorio⁶, Giorgio Piaggio⁵, Gian Marco Ghiggeri⁵ and Girolamo Mattioli²

¹ Radiology Department, Istituto di Ricovero e Cura a Carattere Scientifico (IRCCS) Istituto Giannina Gaslini, Genoa, Italy, ² Pediatric Surgery Department, Istituto di Ricovero e Cura a Carattere Scientifico (IRCCS) Istituto Giannina Gaslini, Genoa, Italy, ³ Radiology Department, Ospedale di Conigliano – Unità Locale Socio-Sanitaria (ULSS) 2 Marca Trevigiana, Conegliano, Italy, ⁴ Department of Health Sciences, Radiology Department, University of Genoa, Genoa, Italy, ⁵ Nephrology and Renal Transplantation Department, Istituto di Ricovero e Cura a Carattere Scientifico (IRCCS) Istituto Giannina Gaslini, Genoa, Italy, ⁶ Epidemiology and Biostatistics Department, Istituto di Ricovero e Cura a Carattere Scientifico (IRCCS) Istituto Giannina Gaslini, Genoa, Italy

OPEN ACCESS

Edited by:

Abdurrahman Onen,
Onen Pediatric Urology Center, Turkey

Reviewed by:

Mario Lima,
University of Bologna, Italy
Sebuh Kurugoglu,
Istanbul University Cerrahpasa, Turkey

*Correspondence:

Fiammetta Sertorio
fiammetta.sertorio@gmail.com

Specialty section:

This article was submitted to
Pediatric Urology,
a section of the journal
Frontiers in Pediatrics

Received: 24 February 2022

Accepted: 10 May 2022

Published: 16 June 2022

Citation:

Damasio MB, Sertorio F, Wong MCY, Campo I, Carlucci M, Basso L, Anfigeno L, Bodria M, Pistorio A, Piaggio G, Ghiggeri GM and Mattioli G (2022) Functional Magnetic Resonance Urography in Ureteropelvic Junction Obstruction: Proposal for a Pediatric Quantitative Score. *Front. Pediatr.* 10:882892. doi: 10.3389/fped.2022.882892

Background: Ureteropelvic junction obstruction (UPJO) is one of the most frequent causes of congenital hydronephrosis. It is essential to distinguish UPJO which needs surgical treatment. fMRU combines high quality morphological details of the kidney and excretory pathways with functional data.

Objective: This study aims to introduce a new radiological score based on fMRU findings to be able to differentiate surgical from non-surgical kidneys.

Materials and Methods: We retrospectively selected patients with hydronephrosis due to UPJO who underwent fMRU (January 2009–June 2018). A multidisciplinary team identified a list of fMRU morpho-functional predictive variables to be included in the analysis. To evaluate the role of different independent variables in predicting the outcome, a multivariable logistic regression model has been performed; the outcome variable was the surgical intervention. For each predictive variable, Odds Ratio and 95% Confidence Intervals were calculated. The likelihood ratio test was used to assess the significance of the variables. Using the regression model, we assigned a numerical value to each predictive variable, rounding up the beta-coefficients. The cut-off value of the total score was obtained from the ROC curve analysis.

Results: A total of 192 patients were enrolled, corresponding to 200 pathological kidneys. All of them underwent fMRU; 135 were surgically treated, while 65 underwent ultrasound or MRU follow-up. Predictive variables significantly associated with surgery resulted to be the urographic phase, the presence of abnormal vessels, and a baseline anterior-posterior pelvic diameter >23 mm. Beta coefficients of the logistic regression model were then converted in scores. The ROC curve of the score showed high sensitivity (84.3%) and specificity (81.3%) with a cut-off > 2.5.

Conclusions: We propose a new fMRU score able to identify surgical vs. non-surgical kidneys with UPJO.

Keywords: kidney, fMRU, CAKUT, UPJ, score

INTRODUCTION

Congenital hydronephrosis is diagnosed in 3–5% of all prenatal ultrasounds (US) (1). While most hydronephrosis are resolved spontaneously, both mild and severe forms may evolve to end stage renal disease (2–4).

Ureteropelvic junction obstruction (UPJO) (1:1,500 newborns) is a congenital anomaly associated with hydronephrosis that can be corrected through surgery (5, 6).

UPJOs are classified as intrinsic or extrinsic causes. Intrinsic forms usually arise from an adynamic ureteral segment or cicatricial post-operative factors whereas extrinsic types are characterized by aberrant crossing vessel (CV), kinkings or adhesions over the ureteropelvic junction (UPJ). UPJOs may result from both intrinsic and extrinsic obstruction (7).

It is essential to distinguish between forms that may be resolved spontaneously from those that require surgical treatment to prevent further loss of renal function (8).

International guidelines (8) are based on radiological data, acquired through techniques such as US and Dynamic Renal Scintigraphy (DRS). US is a diagnostic imaging technique used to evaluate hydronephrosis while DRS is considered the gold standard technique to study the obstruction and the Split Renal Function (SRF) between the two kidneys (9, 10).

The use of functional Urographic Magnetic Resonance Imaging (fMRU) has progressively increased in the assessment of Congenital Anomalies of Kidneys and Urinary Tract (CAKUT) (11–16). fMRU can define the structure of the excretory pathway and the presence of several anomalies while simultaneously it can quantify renal function through SRF and renogram curves (17). In a recent study, fMRU showed a good reliability both for anatomical and functional evaluation (18). To our knowledge, fMRU has never been applied as a grading tool for obstructive uropathies while DRS is considered the gold standard for CAKUT (19).

Therefore, the aim of this study is to introduce a fMRU score to identify patients with UPJO who require surgical correction based on quantitative data. The study compares fMRU results to surgical findings and outcomes in a single pediatric center over 10 years.

MATERIALS AND METHODS

Between January 2009 and June 2018, we retrospectively analyzed all patients who underwent fMRU for hydronephrosis, diagnosed through renal US (anterior-posterior pelvic diameter, APD ≥ 1.5 cm) (20). Patients with associated renal phenotype like megaureter or homolateral double collecting system were excluded.

fMRU was performed in all patients using a standardized Institute protocol, following the previous one published by Vivier et al., and data was analyzed using the available ImageJ MRU software (12, 13). The parameters considered for fMRU score were affected side, pelvic morphology and rotation, APD pre and post-Furosemide administration, delta APD (difference between APD before and after diuretic), presence/absence and type of abnormal vessel, presence/absence of basal dilated ureter and

caliectasia, renographic curve, and SRF evaluated both with AUC and Patlak methods. Pelvic morphology was classified into normal, extra-renal, intra-renal, plongeant, pelvic agenesis (direct connection between calyces and ureter) while pelvic rotation was classified into normal, anterior, posterior, and pelvic agenesis. APD was measured on transversal image at the maximal diameter of intrarenal pelvis (21). Renographic curve is a time-intensity curve calculated by drawing a region of interest (ROI) on Gradient Echo T1-weighted coronal post-contrast images encompassing the entire kidney, including parenchyma and the collecting system (13). Blind evaluation of fMRU images was carried out by an expert pediatric radiologist. fMRU results were compared with surgical data, considered the gold standard to define the etiology of UPJO.

According to current guidelines, indications for surgical intervention are: impaired SRF $<40\%$, a decrease of SRF $>10\%$ in subsequent studies, poor drainage function after Furosemide, increased APD on US, and grade III and IV dilation as defined by the Society for Fetal Urology (8, 22).

According to our institution's guidelines, the presence of an obstructing CV or obstructive symptoms (recurrent flank pain, urinary tract infections) are also considered indications for surgery.

All the resected UPJ were analyzed by a pathologist.

Follow-up was performed by fMRU or US in both groups (surgical and non-surgical patients). The parameters taken into consideration during the follow-up were: APD (variation >5 mm), caliectasia (grade and extension) and renal parenchymal thickness. Based on the fMRU and/or sonographic appearance of these features the pediatric radiologist defined three categories for clinical outcomes: improved, stable, or worsened.

As the study was observational and retrospective in design and did not examine patients' personal information, ethical committee approval was not required.

Statistical Methods

Firstly, descriptive statistics were performed, categorical variables were reported in terms of absolute frequencies and percentages while quantitative variables were reported in terms of mean values with SD or in terms of median values and first and third quartiles (1st–3rd q). Statistical analysis of frequencies was carried out using the chi square test or Fisher's Exact test (if expected frequency was <5). Comparison of quantitative variables between 2 groups (patients with/without surgical intervention) was done by means of the non-parametric Mann-Whitney *U*-test as data were not normally distributed. Normality of variables was tested by means of the Shapiro-Wilk test.

Finally, to evaluate the role of different independent variables in predicting the outcome, a multivariable logistic regression model has been performed; the outcome variable was the surgical intervention (yes, coded "1"/no, coded "0"). Clinically relevant or statistically significant variables evaluated at bivariate analysis were included in the model. Some quantitative variables (*example*: age at first MRI, SRF AUC, DAP pre-Furosemide administration, antero-posterior diameter evaluated at baseline) were dichotomized based on the best cut-off value obtained by

means the ROC curve method. This method allows to obtain the best cut-off value that can discriminate between subjects who had to be operated or not (23).

Some quantitative variables were not included into the logistic regression model as they were auto-correlated (*example*: Split Renal Function “Patlak” and Split Renal Function AUC); the correlation has been evaluated by means of the Spearman’s Rank order coefficient (r_s).

The odds ratios (ORs) with their 95% CI have been calculated and reported. The log-likelihood ratio test (LR test) has been used for testing variables statistical significance. The backward approach (that consists in removing non-significant variables from the saturated model) has been used for evaluating the model. The area under the ROC curve of the model has been used as an indicator of goodness of fit.

Rounding up the regression coefficient (beta) of the statistically significant variables in the logistic regression model to the nearest $\times 0.5$ value or to the nearest integer, a score has been calculated for each significant variable. All these scores were summed up to obtain for each patient a “total prediction score”. Finally, the best cut-off that could discriminate between patients who should undergo surgery or not has been calculated by means of the ROC curve method.

All the statistical tests were two-sided and a P -value < 0.05 was considered statistically significant. Statistica” (release 9.1, StatSoft Corporation, Tulsa, OK, USA) was used for all the bivariate analyses; MedCalc was used for the ROC curve analysis; “Stata” (release 7.0, College Station, TX, USA) was used for the Fisher’s exact test, for the Cohen’s k and for the multivariable logistic regression model.

RESULTS

According to our inclusion and exclusion criteria, 192 patients (61% males and 39% females) were enrolled in the study, corresponding to 200 pathological kidneys, with a median age at fMRU of 5.1 years (1.2–11.2, 1^o-3^o quartile). The affected side was the left one in 124 and the right one in 76 cases with a predominance (62%) of the left side. The anatomical features of pathological kidneys are shown in **Table 1**.

After fMRU, 135/200 kidneys underwent surgery while 65/200 kidneys underwent instrumental follow-up (US or fMRU). In one case the UPJ stenosis was not confirmed by intraoperative ascending pyelography.

In 6/192 patients, Gadolinium-based contrast medium (Gadoteric Acid) was not administered due to counter-indications. In 31/192 patients (25 surgical and 6 non-surgical) it was not possible to perform the functional phase, while in 1/192 cases the urographic phase was not performed due to early interruption of the examination.

The median age at surgery was 5.1 (1st–3rd q: 1.4–11.4) years with a median interval between fMRU and surgery of 2 months. Patients who underwent surgery had a mean follow-up of 25 months (SD: 24 months), while non-surgical patients had a mean follow-up of 30 months (SD: 26 months) from first fMRU.

TABLE 1 | Anatomical features of the kidneys included in the study ($n = 200$).

	N (%)
Affected kidney:	
Right	76 (38.0%)
Left	124 (62.0%)
Pelvic morphology:	
Normal	172 (86.0%)
Extra-renal	15 (7.5%)
Intra-renal	10 (5.0%)
Plongeant	2 (1.0%)
Pelvic agenesis	1 (0.5%)
Pelvic rotation:	
Normal	145 (72.5%)
Anterior	24 (12.0%)
Posterior	30 (15.0%)
Pelvic agenesis	1 (0.5%)
Abnormal vessel:	
None	123 (61.5%)
Yes, non-obstructive	29 (14.5%)
Yes, obstructive	48 (24.0%)
MRI diagnosis:	
Intrinsic UPJ obstruction (UPJ-IO)	122 (61.0%)
Intrinsic cicatricial UPJ defect (UPJ-IC)	25 (12.5%)
Extrinsic vascular UPJ defect (UPJ-EV)	50 (25.0%)
Extrinsic adherential UPJ defect (UPJ-EA)	3 (1.5%)
Type of abnormal vessel ($n = 77$):	
Polar artery	64 (83.1%)
Secondary branch of renal artery	10 (13.0%)
Secondary branch of renal vein	3 (3.9%)

UPJ, Uretero-Pelvic Junction. Plongeant: downward development.

All the resected UPJ were analyzed by pathologist who confirmed the diagnosis.

At a bivariate analysis (**Table 2**) the morphological parameter with the greatest statistical significance between the two subgroups (“surgical kidney” and “non-surgical kidney”) turned out to be the presence of the abnormal vessel obstructing the UPJ (93.8%) regardless of the type of vessel. Moreover, the dilation of the calyces and the renal pelvis, both in basal conditions and after Furosemide administration results were statistically significant. The remaining parameters such as the morphology and rotation of the pelvis and the dilation of the ureter were not significantly different between the two groups.

Finally, to evaluate the role of different independent variables in predicting the surgical intervention, a multivariable logistic regression model was performed. As shown in **Table 3**, there were three predictors of surgical intervention: the urographic phase, the presence of abnormal vessels, and a value of pre-Furosemide administration APD > 23 mm.

Beta coefficients of the logistic regression model were then converted in scores (**Table 3**), rounding up the values to the nearest integer or to the $\times 0.5$ decimal value.

For each kidney, the total score (that theoretically ranges between 0 and 8.5) was then calculated; the best cut-off score

TABLE 2 | Comparison between operated ($n = 135$) and non-operated kidneys ($n = 65$) and fMRU parameters.

	Surgical intervention		P
	Yes, n/N (%)	No, n/N (%)	
Kidney of:			
Male patient	80/123 (65%)	43/123 (35%)	0.35 [#]
Female patient	55/77 (71.4%)	22/77 (28.6%)	
Kidney with previous surgical intervention [n = 173]:			
Yes	28/43 (65.1%)	15/43 (34.9%)	0.43 [#]
No	93/130 (71.5%)	37/130 (28.5%)	
Kidney:			
Right	58/76 (76.3%)	18/76 (23.7%)	0.037 [#]
Left	77/124 (62.1%)	47/124 (37.9%)	
Date of MRI:			
2009–2013	63/97 (64.9%)	34/97 (35.1%)	0.45 [#]
2014–2018	72/103 (69.9%)	31/103 (30.1%)	
MRI diagnosis:			
Intrinsic UPJ obstruction (UPJ-IO)	73/122 (59.8%)	49/122 (40.2%)	0.0001 [§]
Intrinsic cicatricial UPJ defect (UPJ-IC)	13/25 (52.0%)	12/25 (48.0%)	
Extrinsic vascular UPJ defect (UPJ-EV)	46/50 (92.0%)	4/50 (8.0%)	
Extrinsic adherential UPJ defect (UPJ-EA)	3/3 (100%)	0/3 (0.0%)	
Pelvic morphology:			
Normal	115/172 (66.9%)	57/172 (33.1%)	0.96 [§]
Extra-renal	11/15 (73.3%)	4/15 (26.7%)	
Intra-renal	7/10 (70%)	3/10 (30%)	
Plongeant	1/2 (50%)	1/2 (50%)	
Pelvic agenesis	1/1 (100%)	0/1 (0%)	
Pelvic rotation:			
Normal	96/145 (66.2%)	49/145 (33.8%)	0.65 [§]
Anterior	15/24 (62.5%)	9/24 (37.5%)	
Posterior	23/30 (76.7%)	7/30 (23.3%)	
Pelvic agenesis	1/1 (100%)	0/1 (0%)	
Abnormal vessel:			
None	78/123 (63.4%)	45/123 (36.6%)	<0.0001 [#]
Yes, non-obstructive	12/29 (41.4%)	17/29 (58.6%)	
Yes, obstructive	45/48 (93.8%)	3/48 (6.3%)	
Type of abnormal vessel [n = 77]:			
Polar artery	45/64 (70.3%)	19/64 (29.7%)	0.08 [§]
Secondary branch of renal artery	10/10 (100%)	0/10 (0%)	
Secondary branch of renal vein	2/3 (66.7%)	1/3 (33.3%)	
Basal dilated ureter:			
No	103/147 (70.1%)	44/147 (29.9%)	0.20 [#]
Yes	32/53 (60.4%)	21/53 (39.6%)	
Calicectasis:			
Yes pre- and post-Furosemide	128/176 (72.7%)	48/176 (27.3%)	0.0001 [§]
No pre-/Yes post-Furosemide	4/11 (36.4%)	7/11 (63.6%)	
No pre- and post-Furosemide	3/13 (23.1%)	10/13 (76.9%)	
APD Pre-Furosemide, median (1st–3rd q)	28 (18.5–37) [n = 135]	15 (13–20) [n = 65]	<0.0001 [^]
APD Post-Furosemide, median (1st–3rd q)	33 (24–44) [n = 127]	23 (18–28) [n = 65]	<0.0001 [^]
Delta% APD [(Post minus pre-Furosemide)/Pre] × 100, Median (1st–3rd q)	14.0 (0.0–38.9) [n = 127]	35 (18.2–64.3) [n = 65]	0.0007 [^]
Age at 1st MRI ≤ 6.93	85/118 (72%)	33/118 (28%)	0.10 [#]
>6.93	50/82 (61%)	32/82 (39%)	

(Continued)

TABLE 2 | Continued

	Surgical intervention		P
	Yes, n/N (%)	No, n/N (%)	
SRF AUC \leq 38	63/75 (84%)	12/75 (16%)	<0.0001 [#]
>38	47/94 (50%)	47/94 (50%)	
APD pre-Furosemide \leq 23	47/100 (47%)	53/100 (53%)	<0.0001 [#]
>23	88/100 (88%)	12/100 (12%)	
Urographic phase:			
Ready complete	10/43 (23.3%)	33/43 (76.7%)	<0.0001 [#]
Delayed complete	47/73 (64.4%)	26/73 (35.6%)	
Delayed incomplete	51/54 (94.4%)	3/54 (5.6%)	
Absent	19/21 (90.5%)	2/21 (9.5%)	
Renographic curve:			
Within normal limits	10/38 (26.3%)	28/38 (73.7%)	<0.0001 [#]
Borderline	46/70 (65.7%)	24/70 (34.3%)	
Accumulating	55/63 (87.3%)	8/63 (12.7%)	

UPJ, Uretero-Pelvic Junction; APD, anterior-posterior diameter in millimeters. Plongeant: downward development.

Figures in round parentheses represent row percentages.

[#]P: Pearson's Chi-square test.

[§]P: Fisher's Exact test.

[^]P: Mann-Whitney U-test.

TABLE 3 | Multivariable logistic regression model (N = 168); outcome variable: surgical intervention: yes (109/168; 64.9%).

Predictive variables	OR	IC 95%	##P	Beta	Score
Urographic phase: (Reference category: ready complete)					
Delayed complete	6.05	(1.93–18.93)	<0.0001	1.800	2
Delayed incomplete	46.85	(9.51–230.75)		3.847	4
Absent	54.14	(5.27–556.41)		3.992	4
Abnormal vessels: (Reference category: absent)					
Present, without conflict	0.69	(0.2–2.35)	0.0002	0.366	0.5
Present, with conflict	10.47	(2.56–42.86)		2.349	2.5
DAP pre-Furosemide > 23 mm (reference \leq 23 mm)	8.99	(3.31–24.39)	<0.0001	2.196	2
Area of the ROC curve of the model: 0.904					

^{##}P: Test "Likelihood Ratio" (LR test).

was calculated by means of an ROC curve, using the surgical intervention as the outcome variable (yes/no). The best cut-off score able to predict surgical intervention was > 2.5 (Figure 1).

Outcome data at the end of the follow-up was available on 148/200 kidneys (74%). The median length of follow-up was 1.73 years (1st–3rd q: 0.90–3.40 years) in the surgical group, and 1.69 years (1st–3rd q: 0.91–4.49 years) in the non-surgical group.

As shown in Table 4, a greater percentage of improvement was observed in operated kidneys (75 out of 104, 72.1%) with respect to non-operated kidneys (15 out of 44, 34.1%); this difference was highly statistically significant (Fisher's exact test, $P < 0.0001$). Moreover, analysis of the observed outcome at the end of follow-up showed that diagnosis of UPJ Intrinsic Obstruction (UPJ-IO) is the subtype that had the greatest improvement after surgery (Fisher's exact test, $P < 0.001$); similar data were observed for the diagnosis of Intrinsic Cicatricial UPJ (UPJ-IC) and Extrinsic Vascular UPJ (UPJ-EV) without reaching statistical significance

due to the small numbers in the two diagnostic subgroups. Data of the outcome at last follow-up was available for only one kidney with the diagnosis of Extrinsic Adherent UPJ (UPJ-EA) and therefore no statistical test could be performed for this diagnostic subgroup; it was only observed that this case had improved.

DISCUSSION

The diagnosis of congenital hydronephrosis has increased in incidence since the 1980s due to the greater diffusion of prenatal US. In published literature, about 50–75% of hydronephrosis are resolved or stabilized without treatment; the remaining cases need corrective surgery as chronic dilation of the calicopyelic system induced by permanent obstacle to urinary outflow determines an incomplete morpho-functional development of the affected kidney (2, 4, 5, 24, 25).

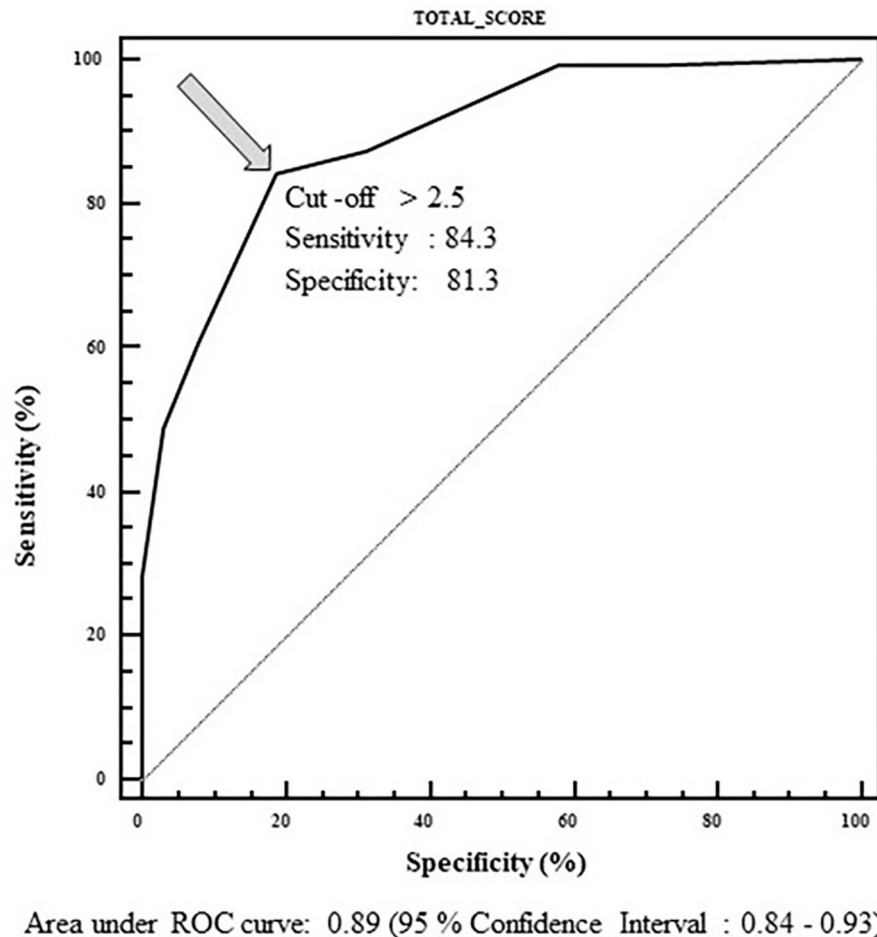


FIGURE 1 | ROC curve used to determine cut-off value of the total score able to predict surgical intervention. Range of the score: 0–8.5. Best cut-off value: 2.5.

Research has shown that early diagnosis of hydronephrosis improves the overall management in the postnatal phase (6, 26). No univocal consensus on management exists. The above-mentioned surgical indications for corrective surgery of the UPJO are limited as they are based on the need for an existing functional renal damage (8, 22, 27, 28).

The most frequent cause of UPJO (62–75%) is the presence of an aperistaltic segment adjacent to the pyelo-ureteral junction. Initially, the obstruction is only functional, however, with time tissue alterations can occur, causing scarring and reduction of the pyelo-ureteral caliber (29–32). The second most frequent cause of UPJO is the presence of an abnormal vessel (11–49%) that crosses anteriorly the UPJ or proximal ureter, hindering the outflow (31, 33–35). According to literature we found that 48/192 patients (24%) had obstructive CV. In these cases, the obstruction may be intermittent, with colic symptoms and later diagnosis. Detection of CV by imaging studies as a cause of obstruction is important as it may represent a surgical indication for the risk of ischemia due to the compression of the CV by the dilated pelvis (36). Moreover, we found that patients with obstructive CV had a median APD

pre-Furosemide of 26.5 mm (17–35.8 IC) which is greater than the cut off value for surgery identified by our statistical analyses.

Identification of the abnormal vessel in preoperative imaging remains an important step in UPJO surgical planning (**Figure 2**) avoiding unnecessary pyeloplasty (31, 37). Menon et al. identified radiological findings on MRU suspicious for the presence of CV (small, intrarenal, globular pelvis, widening of the pyelo-calyceal junction, and prominent calyceal dilation) (38). Fiorenza et al. found that fMRU was helpful to identify CV in 89.2% of cases (39).

DRS is the gold standard for the functional evaluation of hydroureteronephrosis and to guide therapeutic decisions; fMRU provides a radiation-free morphological and functional assessment with remarkably high spatial and contrast resolution (33, 40). Recently, published data demonstrated the good concordance between fMRU and DRS findings in patients with CAKUT (18).

Furthermore, in recent years, several studies have been published on the development of imaging-based scores for the assessment of hydroureteronephrosis, able to objectively predict

TABLE 4 | Observed outcome at the end of follow-up ($N = 148/200$).

	Improved N (%)	Stable N (%)	Deteriorated N (%)	P
Operated kidney [$n = 104$]	75 (72.1%)	26 (25.0%)	3 (2.9%)	0.0001 [§]
Non-operated kidney [$n = 44$]	15 (34.1%)	25 (56.8%)	4 (9.1%)	
Diagnosis at MRI:				
UPJ-IO [$n = 75$]				
Operated kidney [$n = 59$]	45 (76.3%)	13 (22.0%)	1 (1.7%)	0.001 [§]
Non-operated kidney [$n=36$]	14 (38.9%)	19 (52.8%)	3 (8.3%)	
UPJ-IC [$n = 15$]				
Operated kidney [$n = 9$]	5 (55.6%)	4 (44.4%)	-	0.29 [§]
Non-operated kidney [$n = 6$]	1 (16.7%)	5 (83.3%)	-	
UPJ-EV [$n = 37$]				
Operated kidney [$n = 35$]	24 (68.6%)	9 (25.7%)	2 (5.7%)	0.05 [§]
Non operated kidney [$n = 2$]	-	1 (50.0%)	1 (50.0%)	
UPJ-EA [$n = 1$]				
Operated kidney [$n = 1$]	1 (100.0)	-	-	-
Rene non-operato	-	-	-	-

Figures in round parentheses represent row percentages.

[§]P: Fisher's exact test.

the need for surgery and to evaluate the resolution of the obstruction (19, 41).

In this study, we focused on the role of fMRU in guiding surgical or conservative approach in UPJO proposing a quantitative score. The score was obtained using the classical statistical methodology but also taking into account clinical considerations.

First, variables considered as items of the score were chosen on a clinical basis. Subsequently, the considered variables were evaluated according to a standard statistical method with a multi-variable logistic regression analysis, also being used to identify the best predictors of surgical interventions. The beta coefficients of the best-fitted logistic model were considered as points of the score for each significant variable. Finally, all these scores were then added up to obtain a "total prediction score" for each individual patient.

In our bivariate model analysis between surgical and non-surgical kidneys, the presence of an abnormal vessel obstructing the UPJ (93.8%) showed to be the morphological parameter with the greatest statistical significance. Other parameters, such as morphology and rotation of the pelvis and ureteral dilation were not found to be statistically significant when comparing the two groups. Interestingly, our analysis highlighted the role of dilation of the calyces and renal pelvis measured both pre and post-hydration and Furosemide injection. Surgical kidneys had a considerably greater dilation than non-surgical ones, which worsened after water load and Furosemide injection.

The subclass of extrinsic juntopathy resulted to be the major condition candidate to surgery.

A substantial concordance was found between surgical findings and fMRU, consistent with published data (38, 42).

At follow-up, the hydronephrosis and the morphology of the pathological kidney were evaluated as improved, stable, or

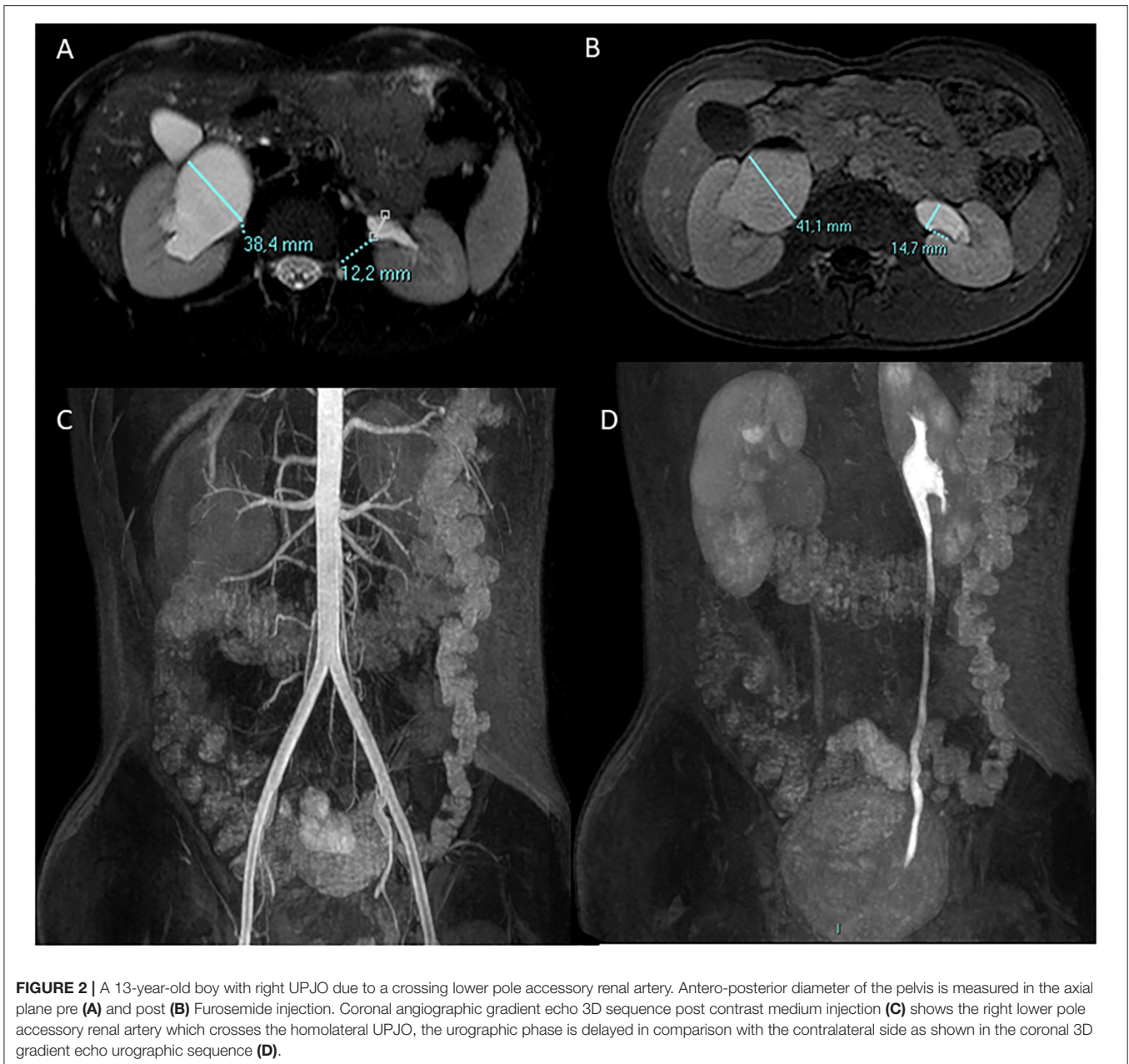
worsened. An important finding of our analyses is that surgical kidneys improved significantly in 88.1% of cases, while non-surgical kidneys improved in 52% of cases or remained stable in 44% of cases. Intrinsic UPJOs have the most statistically significant improvement after treatment. Moreover, UPJ-EV is always treated surgically with an improvement of the hydronephrotic condition.

Based on the regression model, the significant predictive variables were pelvic dilation, fMRU diagnosis, and the urographic phase. Functional curves, significant at the bivariate analysis, were excluded from the final score because of their direct correlation with other variables.

The scores attributed to each predictive value are shown in **Table 3**. The score assigned to the delayed and incomplete phase is higher than the absent one, probably due to the few cases present in the latter group. The discrepancy between the severity of the urographic framework and the numerical value of the score is certainly to be attributed to the sample selection; we excluded all cases of severe UPJO associated with other congenital anomalies that often require surgery. The parameter AUC values greater or lower than 38, even if significant at bivariate analysis, was excluded from the score because it resulted to be not significant at the multivariate analysis. However, its role in surgical planning remains a corner stone.

The more delayed the detection of obstructive disease, the more likely the patient will undergo follow-up instead of surgery; conversely, very young patients have a higher risk of undergoing surgery.

The best cut-off value obtained by the ROC curve method, able to discriminate between subjects who had to be operated or not, was calculated. The ROC curve demonstrates the reliability of our score in discriminating surgical/non-surgical patients



with a cut-off >2.5 , a sensitivity of 84.3%, and specificity of 81.3%.

However, our study has some limitations. Within the surgical kidney group, we had few patients with UPJ-EA. Furthermore, we had fewer cases with available follow-up data in non-surgical kidneys; however, the median of the follow-up of the non-surgical and surgical groups, is substantially overlapping (1.7 and 1.3 years) and represents an adequate period to express clinical judgments on the pathological kidney (improved, stable, worsened).

Finally, this new radiological score still needs to be applied to a wider different population to be validated.

In conclusion, by means of a bivariate and multivariate analysis, we evaluated the predictive role of fMRU findings in the discrimination between surgical and non-surgical patients.

Based on our experience we propose a new highly sensitive and specific fMRU score able to identify surgical vs. non-surgical kidneys in patients with UPJO.

We believe that this score can help surgeons in patients' management, however it needs to be clinically validated in a large cohort of patients. Hopefully, a wider use of this score will further improve its clinical use. Considering that the main goal of pediatric urology is to preserve long term renal function with the least invasive approach, we strongly believe that this tool may be useful in guiding clinical decisions.

DATA AVAILABILITY STATEMENT

The raw data supporting the conclusions of this article will be made available by the authors, without undue reservation.

ETHICS STATEMENT

Ethical review and approval was not required for the study on human participants in accordance with the local legislation and institutional requirements. Written informed consent from the participants' legal guardian/next of kin was not required to participate in this study in accordance with the national legislation and the institutional requirements.

REFERENCES

- Woodward M, Frank D. Postnatal management of antenatal hydronephrosis. *BJU Int.* (2002) 89:149–56. doi: 10.1046/j.1464-4096.2001.woodward.2578.x
- Arena S, Romeo C. Spontaneous resolution of congenital anomalies of the kidney and the urinary tract (CAKUT). *Eur J Pediatr.* (2017) 176:143. doi: 10.1007/s00431-016-2788-5
- Sanna-Cherchi S, Ravani P, Corbani V, Parodi S, Haupt R, Piaggio G, et al. Renal outcome in patients with congenital anomalies of the kidney and urinary tract. *Kidney Int.* (2009) 76:528–33. doi: 10.1038/ki.2009.220
- Nef S, Neuhaus TJ, Sparta G, Weitz M, Buder K, Wisser J, et al. Outcome after prenatal diagnosis of congenital anomalies of the kidney and urinary tract. *Eur J Pediatr.* (2016) 175:667–76. doi: 10.1007/s00431-015-2687-1
- Capello SA, Kogan BA, Giorgi LJ, Jr., Kaufman RP, Jr. Prenatal ultrasound has led to earlier detection and repair of ureteropelvic junction obstruction. *J Urol.* (2005) 174:1425–8. doi: 10.1097/01.ju.0000173130.86238.39
- Alberti C. Congenital ureteropelvic junction obstruction: physiopathology, decoupling of tout court pelvic dilatation-obstruction semantic connection, biomarkers to predict renal damage evolution. *Eur Rev Med Pharmacol Sci.* (2012) 16:213–9.
- Zhang PL, Peters CA, Rosen S. Ureteropelvic junction obstruction: morphological and clinical studies. *Pediatr Nephrol.* (2000) 14:820–6. doi: 10.1007/s004679900240
- Radmayr C, Bogaert G, Dogan HS, Kocvara R, Nijman JM, Stein R, et al. EAU guidelines. In: *Presented at the EAU Annual Congress.* Copenhagen: EAU Guidelines Office (2018).
- O'Reilly PH, Lawson RS, Shields RA, Testa HJ. Idiopathic hydronephrosis—the diuresis renogram: a new non-invasive method of assessing equivocal pelvioureteral junction obstruction. *J Urol.* (1979) 121:153–5. doi: 10.1016/S0022-5347(17)56703-8
- O'Reilly PH, Testa HJ, Lawson RS, Farrar DJ, Edwards EC. Diuresis renography in equivocal urinary tract obstruction. *Br J Urol.* (1978) 50:76–80. doi: 10.1111/j.1464-410X.1978.tb03030.x
- Rohrschneider WK, Haufe S, Wiesel M, Tönshoff B, Wunsch R, Darge K, et al. Functional and morphologic evaluation of congenital urinary tract dilatation by using combined static-dynamic MR urography: findings in kidneys with a single collecting system. *Radiology.* (2002) 224:683–94. doi: 10.1148/radiol.2243011207
- Vivier PH, Dolores M, Taylor M, Elbaz F, Liard A, Dacher JN, et al. MR urography in children. Part 1: how we do the F0 technique. *Pediatr Radiol.* (2010) 40:732–8. doi: 10.1007/s00247-009-1538-5
- Vivier PH, Dolores M, Taylor M, Dacher JN. MR urography in children. Part 2: how to use ImageJ MR urography processing software. *Pediatr Radiol.* (2010) 40:739–46. doi: 10.1007/s00247-009-1536-7
- Riccabona M, Avni FE, Dacher JN, Damasio MB, Darge K, Lobo ML, et al. ESPR uro-radiology task force and ESUR paediatric working group. ESPR uro-radiology task force and ESUR paediatric working group: imaging and procedural recommendations in paediatric uro-radiology, part III Minutes of the ESPR uro-radiology task force minisymposium on intravenous urography,

AUTHOR CONTRIBUTIONS

MBD and FS wrote the original draft of the paper. AP performed statistical analyses. MCYW, IC, MC, LB, LA, MB, GP, GMG, and GM made contributions. All authors approved the final version of the paper.

FUNDING

This work was supported by ministerial funds (MSALRF DEL68/21) as it is part of the project precision medicine in CAKUT.

- uro-CT and MR-urography in childhood. *Pediatr Radiol.* (2010) 40:1315–20. doi: 10.1007/s00247-010-1686-7
- Grattan-Smith JD, Little SB, Jones RA. MR urography evaluation of obstructive uropathy. *Pediatr Radiol.* (2008) 38(Suppl. 1):S49–69. doi: 10.1007/s00247-007-0667-y
- Grattan-Smith JD, Jones RA. MR urography: technique and results for the evaluation of urinary obstruction in the pediatric population. *Magn Reson Imaging Clin N Am.* (2008) 16:643–60. doi: 10.1016/j.mric.2008.07.003
- Riccabona M. Pediatric MRU-its potential and its role in the diagnostic work-up of upper urinary tract dilatation in infants and children. *World J Urol.* (2004) 22:79–87. doi: 10.1007/s00345-004-0406-z
- Damasio MB, Bodria M, Dolores M, Durand E, Sertorio F, Wong MCY, et al. Comparative study between functional MR urography and renal scintigraphy to evaluate drainage curves and split renal function in children with congenital anomalies of kidney and urinary tract (CAKUT). *Front Pediatr.* (2020) 7:527. doi: 10.3389/fped.2019.00527
- Babu R, Venkatachalapathy E, Sai V. Hydronephrosis severity score: an objective assessment of hydronephrosis severity in children—a preliminary report. *J Pediatr Urol.* (2019) 15:68.e1–e6. doi: 10.1016/j.jpuro.2018.09.020
- Cakici EK, Aydog O, Eroglu FK, Yazilits F, Ozlu SG, Uner C, et al. Value of renal pelvic diameter and urinary tract dilation classification in the prediction of urinary tract anomaly. *Pediatr Int.* (2019) 61:271–7. doi: 10.1111/ped.13788
- Nguyen HT, Benson CB, Bromley B, Campbell JB, Chow J, Coleman B, et al. Multidisciplinary consensus on the classification of prenatal and postnatal urinary tract dilation (UTD classification system). *J Pediatr Urol.* (2014) 10:982–98. doi: 10.1016/j.jpuro.2014.10.002
- Fernbach SK, Maizels M, Conway JJ. Ultrasound grading of hydronephrosis: introduction to the system used by the Society for Fetal Urology. *Pediatr Radiol.* (1993) 23:478–80. doi: 10.1007/BF02012459
- Metz CE. Receiver operating characteristic analysis: a tool for the quantitative evaluation of observer performance and imaging systems. *J Am Coll Radiol.* (2006) 3:413–22. doi: 10.1016/j.jacr.2006.02.021
- Sanna-Cherchi S, Caridi G, Weng PL, Scolari F, Perfumo F, Gharavi AG, et al. Genetic approaches to human renal agenesis/hypoplasia and dysplasia. *Pediatr Nephrol.* (2007) 22:1675–84. doi: 10.1007/s00467-007-0538-7
- Thomas DF. Prenatally diagnosed urinary tract abnormalities: long-term outcome. *Semin Fetal Neonatal Med.* (2008) 13:189–95. doi: 10.1016/j.siny.2007.10.003
- Mendichovszky I, Solar BT, Smeulders N, Easty M, Biassoni L. Nuclear medicine in pediatric nephro-urology: an overview. *Semin Nucl Med.* (2017) 47:204–28. doi: 10.1053/j.semnuclmed.2016.12.002
- Cheng HL. Surgical indications for unilateral neonatal hydronephrosis in considering uretero-pelvic junction obstruction. *Urological Science.* (2004) 25:73–71. doi: 10.1016/j.urols.2012.05.002
- Weiss DA, Kadakia S, Kurzweil R. Detection of crossing vessels in pediatric ureteropelvic junction obstruction: clinical patterns and imaging findings. *J Pediatr Urol.* (2015) 11:173.e1–5. doi: 10.1016/j.jpuro.2015.04.017

29. Chehade H, Parvex P, Cachat F, Meyrat JB, Birraux J, Fret P, et al. Hydronéphrose néonatale: recommandations suisses romandes de prise en charge. *Paediatrica*. (2010) 21:15–8.
30. Koleda P, Apoznanski W, Wozniak Z, Rusiecki L, Szydelko T, Pilecki W, et al. Changes in interstitial cell of Cajal-like cells density in congenital ureteropelvic junction obstruction. *Int Urol Nephrol*. (2012) 44:7–12. doi: 10.1007/s11255-011-9970-5
31. Mishra A. Crossing renal vessel causing ureteropelvic junction obstruction. *Saudi Med J*. (2006) 27:1415–7.
32. Yiee JH, Johnson-Welch S, Baker LA, Wilcox DT. Histologic differences between extrinsic and intrinsic ureteropelvic junction obstruction. *Urology*. (2010) 76:181–4. doi: 10.1016/j.urology.2010.02.007
33. Jones RA, Grattan-Smith JD, Little S. Pediatric magnetic resonance urography. *J Magn Reson Imaging*. (2011) 33:510–26. doi: 10.1002/jmri.22474
34. Rigas A, Karamanolakis D, Bogdanos I, Stefanidis A, Androulakakis PA. Pelvi-ureteric junction obstruction by crossing renal vessels: clinical and imaging features. *BJU Int*. (2003) 92:101–3. doi: 10.1046/j.1464-410X.2003.04265.x
35. Stern JM, Park S, Anderson JK, Landman J, Pearle M, Cadeddu JA. Functional assessment of crossing vessels as etiology of ureteropelvic junction obstruction. *Urology*. (2007) 69:1022–4. doi: 10.1016/j.urology.2007.02.055
36. Gearhart J, Rink R, Mouriquand P. *Pediatric Urology*. 2nd ed. Philadelphia, PA: Elsevier (2009). p. 258.
37. Mitterberger M, Pinggera GM, Neururer R, Peschel R, Colleselli D, Aigner F, et al. Comparison of contrast-enhanced color Doppler imaging (CDI), computed tomography (CT), and magnetic resonance imaging (MRI) for the detection of crossing vessels in patients with ureteropelvic junction obstruction (UPJO). *Eur Urol*. (2008) 53:1254–60. doi: 10.1016/j.eururo.2007.11.031
38. Menon P, Rao KL, Sodhi KS, Bhattacharya A, Saxena AK, Mittal BR. Hydronephrosis: comparison of extrinsic vessel versus intrinsic ureteropelvic junction obstruction groups and a plea against the vascular hitch procedure. *J Pediatr Urol*. (2015) 11:80.e1–6. doi: 10.1016/j.jpuro.2014.10.014
39. Fiorenza V, Carlucci M, Damasio MB, Piaggio G, Degl'Innocenti ML, Ghiggeri GM, et al. Is the lower pole crossing vessels transposition a valid option for the treatment of extrinsic ureteropelvic obstruction in children? Considerations from a single-centre experience. *J Ped Endosc Surg*. (2021) 3:17–23. doi: 10.1007/s42804-020-00080-8
40. McDaniel BB, Jones RA, Scherz H, Kirsch AJ, Little SB, Grattan-Smith JD. Dynamic contrast-enhanced MR urography in the evaluation of pediatric hydronephrosis: Part 2, anatomic and functional assessment of ureteropelvic junction obstruction [corrected]. *AJR Am J Roentgenol*. (2005) 185:1608–14. doi: 10.2214/AJR.04.1574
41. Rickard M, Braga LH, Oliveria JP, Romao R, Demaria J, Lorenzo AJ. Percent improvement in renal pelvis antero-posterior diameter (PI-APD): prospective validation and further exploration of cut-off values that predict success after pediatric pyeloplasty supporting safe monitoring with ultrasound alone. *J Pediatr Urol*. (2016) 12:228.e1–6. doi: 10.1016/j.jpuro.2016.04.003
42. Ellerkamp V, Kurth RR, Schmid E, Zundel S, Warmann SW, Fuchs J. Differences between intrinsic and extrinsic ureteropelvic junction obstruction related to crossing vessels: histology and functional analyses. *World J Urol*. (2016) 34:577–83. doi: 10.1007/s00345-015-1645-x

Conflict of Interest: The authors declare that the research was conducted in the absence of any commercial or financial relationships that could be construed as a potential conflict of interest.

Publisher's Note: All claims expressed in this article are solely those of the authors and do not necessarily represent those of their affiliated organizations, or those of the publisher, the editors and the reviewers. Any product that may be evaluated in this article, or claim that may be made by its manufacturer, is not guaranteed or endorsed by the publisher.

Copyright © 2022 Damasio, Sertorio, Wong, Campo, Carlucci, Basso, Anfigeno, Bodria, Pistorio, Piaggio, Ghiggeri and Mattioli. This is an open-access article distributed under the terms of the Creative Commons Attribution License (CC BY). The use, distribution or reproduction in other forums is permitted, provided the original author(s) and the copyright owner(s) are credited and that the original publication in this journal is cited, in accordance with accepted academic practice. No use, distribution or reproduction is permitted which does not comply with these terms.