



The SES-CD Could Be a Predictor of Short- and Long-Term Mucosal Healing After Exclusive Enteral Nutrition in Pediatric Crohn's Disease Patients

OPEN ACCESS

Wenjuan Tang¹, Wenhui Hu¹, Peng Shi², Ziqing Ye¹, Jie Wu¹, Ye Zhang¹, Yuhuan Wang^{1†*} and Ying Huang^{1†*}

Edited by:

Batia Weiss,
Edmond and Lily Safra Children's
Hospital, Israel

Reviewed by:

Corentin Babakissa,
Université de Sherbrooke, Canada
Thomai Karagiozoglou-Lampoudi,
International Hellenic University,
Greece

*Correspondence:

Yuhuan Wang
wangyuhuan08@163.com
Ying Huang
yhuang815@163.com

† These authors have contributed
equally to this work

Specialty section:

This article was submitted to
Pediatric Gastroenterology,
Hepatology and Nutrition,
a section of the journal
Frontiers in Pediatrics

Received: 12 February 2022

Accepted: 13 April 2022

Published: 18 May 2022

Citation:

Tang W, Hu W, Shi P, Ye Z, Wu J,
Zhang Y, Wang Y and Huang Y (2022)
The SES-CD Could Be a Predictor
of Short- and Long-Term Mucosal
Healing After Exclusive Enteral
Nutrition in Pediatric Crohn's Disease
Patients. *Front. Pediatr.* 10:874425.
doi: 10.3389/fped.2022.874425

¹ Department of Gastroenterology, Pediatric Inflammatory Bowel Disease Research Center, National Children's Medical Center, Children's Hospital of Fudan University, Shanghai, China, ² Medical Statistics Department, National Children's Medical Center, Children's Hospital of Fudan University, Shanghai, China

Aims: To explore the predictors of mucosal healing (MH) for short- and long-term after exclusive enteral nutrition (EEN) in pediatric Crohn's disease (CD) patients.

Methods: A retrospective analysis was performed for newly diagnosed active CD patients admitted to our center from January 2017 to 30 December 2020, who were treated with EEN for induction therapy with a minimum of 12 months of follow-up post-EEN. According to the simple endoscopic score for CD (SES-CD), at 1-year post-EEN, 17 patients with an SES-CD < 3 were classified into the sustained MH group (sMH), and 33 patients with an SES-CD ≥ 3 were classified into the sustained non-MH group (sNMH). Statistical methods were used to compare the differences between the two groups and explore the predictors of MH at the end of EEN and 1-year post-EEN.

Results: The SES-CD in the sMH group was lower than that in the sNMH group both at baseline and the end of EEN [sMH vs. sNMH: 8.7 ± 1.2 vs. 16.2 ± 1.0, respectively, $p < 0.001$ at baseline; 1.0 (3.5) vs. 4.0 (2.0), respectively, $p < 0.01$ at the end of EEN]. The weighted Pediatric Crohn's Disease Activity Index and erythrocyte sedimentation rate in the sMH group were lower than those in the sNMH group at baseline (both $p < 0.05$), but showed no difference at the end of EEN. From baseline to 1-year post-EEN, compared with patients in the sNMH group, there were more patients classified with L1 in the sMH group at each time point (all $p < 0.001$) and fewer patients classified with L3 in the sMH group at baseline and 1-year post-EEN. After EEN, fewer patients received infliximab and had a longer exposure time to infliximab in the sMH group than in the sNMH group. Only the SES-CD at baseline was negatively associated with MH at the end of EEN (OR = 1.40 95% CI = 1.12–1.67, $p = 0.00$) and 1-year post-EEN (OR = 1.33, 95% CI = 1.12–1.58, $p = 0.001$), and the cut off value was 11.5.

Conclusion: The SES-CD could predict both short- and long-term MH for EEN. Patients with an SES-CD < 11.5 had a high probability of reaching MH by EEN-inducing therapy and maintaining sustained MH at 1-year post-EEN. Patients with an SES-CD greater than 11.5 at baseline should be treated more aggressively with biologics.

Keywords: simple endoscopic score for Crohn's disease (SES-CD), exclusive enteral nutrition (EEN), mucosal healing (MH), Crohn's disease, children

INTRODUCTION

Exclusive enteral nutrition (EEN) has been widely studied and recommended as a first-line therapy for inducing remission of Crohn's disease (CD) in children (1, 2). Most studies reported that EEN effectively induced clinical and biochemical remissions and the endoscopic response of pediatric CD (3–6).

Mucosal healing (MH) is a treatment target for CD patients. The 2020 European Crohn's and Colitis Organization-Pediatric IBD Porto group of the European Society of Pediatric Gastroenterology, Hepatology and Nutrition guideline defined MH as the absence of macroscopic inflammation or a simple endoscopic score for CD (SES-CD) < 3 points (7). For CD patients, clinical remission is not accurate in MH (8, 9), and maintaining sustained MH is associated with favorable long-term outcomes of CD progression (10). However, there have been limited studies on EEN using MH as the primary outcome in children (11–15), and the long-term effectiveness of EEN on MH is poorly documented.

Crohn's disease is characterized by periods of remission and relapse, and the anti-inflammatory effect of EEN on the gut of CD patients is rapidly lost after food reintroduction (16, 17). Therefore, creating appropriate EEN programs and maintenance treatment options post-EEN to maintain sustained MH is important for patients. It is better to have some predictive variables of MH after EEN. A study demonstrated that a weighted Pediatric Crohn's Disease Activity Index (wPCDAI) < 57, a fecal calprotectin (FCP) level < 500 ug/g, ileal involvement, and C-reactive protein level > 15 mg/L could be predictive factors of the clinical response to EEN (18). However, the clinical response did not correspond to MH in the gut.

Therefore, we designed this study. First, we identified the characteristics and clinical differences between patients with sustained MH and those with sustained non-MH at 1-year post-EEN. Second, we explored the predictive factors of MH for EEN at the end of EEN (short-term) and 1-year post-EEN (long-term).

MATERIALS AND METHODS

Participants and Study Design

A retrospective analysis was performed for newly diagnosed active CD patients admitted to our center from January 2017 to 30 December 2020, who were treated with EEN for induction therapy with a minimum of 12 months of follow-up post-EEN. CD was diagnosed according to the Porto criteria (19) and based on a combination of history, physical and laboratory examinations, endoscopy with histology, and small bowel

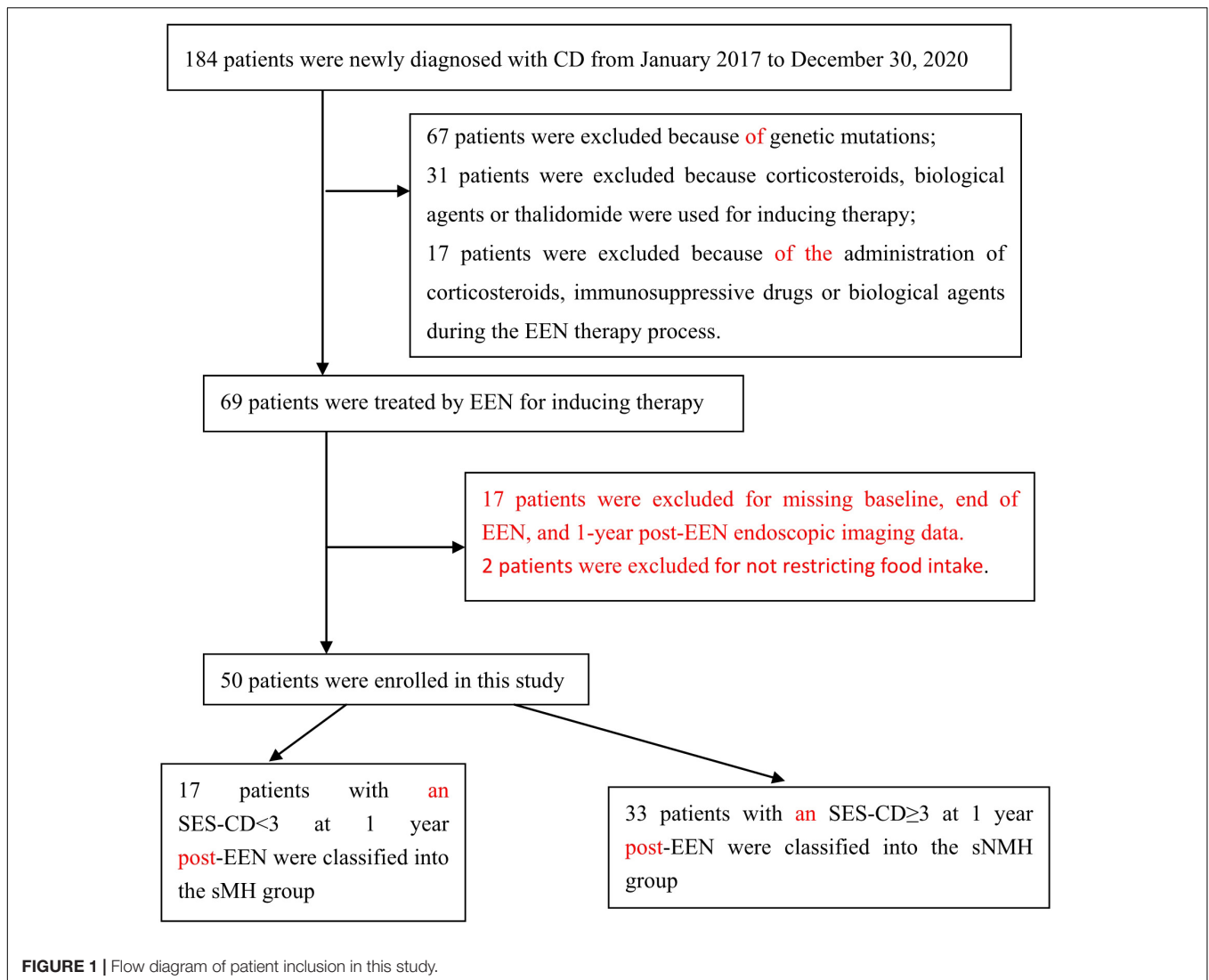
imaging (capsule endoscopy or magnetic resonance imaging or enhanced computerized tomography).

The feeding protocol was as follows: patients were exclusively treated with EEN for at least 6 weeks with no other medication. The formula could be polymeric or oligomeric, and the volume was determined according to the patient's energy needs. The patients received high-energy intakes (> 110–120% of the average requirement). For children \leq 6 years old, the energy intakes were calculated according to weight; for children > 6 years old, the energy intakes were calculated according to age and sex (**Supplementary Table 1**). No other foods were permitted during EEN treatment, although the consumption of small amounts of water (<100 ml/day) was permitted. The feeding could be administered orally or through a nasogastric tube.

The exclusion criteria were as follows: (1) patients who had genetic mutations or those with CD combined with another enteropathy, such as an Epstein–Barr virus or a tuberculosis infection; (2) patients who did not finish the daily prescribed volume of formula for any reason; (3) patients who had been given corticosteroids, immunosuppressive drugs, or biological agents before or during the EEN therapy process; and (4) patients with missing baseline, end of EEN, or 1-year post-EEN endoscopic imaging data.

A total of 184 active CD patients were newly diagnosed from 2017.01 to 2020.12.31 (**Figure 1**); 67 patients were excluded because of genetic mutations, 31 patients were excluded because corticosteroids, biological agents, or thalidomide were used for inducing therapy, and 17 patients were excluded because corticosteroids, immunosuppressive drugs, or biological agents were used during the EEN therapy process. Hence, 69 patients were treated by EEN to induce the remission of CD. During the process, 17 patients were excluded for missing baseline, end of EEN, and 1-year post-EEN endoscopic imaging data. Two patients were excluded for not restricting their food intake. Hence, 50 patients were enrolled in this study. According to the SES-CD at 1-year post-EEN treatment, 17 patients with an SES-CD < 3 were classified into the sustained MH (sMH) group, and 33 patients with an SES-CD \geq 3 were classified into the sustained non-MH (sNMH) group (**Figure 1**).

The medical records of these 50 patients from baseline (within 1 week before the start of EEN) to 2021.12.31 (at least 12 months of follow-up post-EEN) were extracted from existing hospital databases, including patient characteristics, disease activity data such as the SES-CD, Paris Classifications, Lewis score, wPCDAI, FCP, and erythrocyte sedimentation rate (ESR), nutrient data such as weight, height, serum albumin (ALB) level, hemoglobin (Hgb) level, and maintenance treatment post-EEN.



Statistical Analysis

Data were analyzed using SPSS 26.0 (IBM, Armonk, NY, United States) and GraphPad Prism Software (GraphPad Software, San Diego, CA, United States). Categorical variables are expressed as numbers and proportions (%), and Fisher's exact test was used to analyze the differences. Normally distributed quantitative variables are expressed as the means \pm SD, and Student's *t*-test was used to analyze the differences. Otherwise, skewed quantitative variables are expressed as medians [interquartile range (IQR)], and the Mann-Whitney test was used to analyze the differences. Univariate and multivariate logistic regression models were performed to identify potential predictors. All the variables included in **Table 1** were first included in the univariate analysis to construct the model. Only variables that presented statistically significant differences ($p < 0.05$) in the univariate analysis and based on theoretical or empirical knowledge were considered to be related to the dependent variable and included in the multivariate analysis, as shown in **Tables 2, 3**. We measured the association

between the model's predictive variables and the dependent variable with the odds ratio (OR) and its corresponding 95% confidence interval (95% CI). Receiver operating characteristic (ROC) curves were generated, and the area under the curve (AUC) was calculated to summarize the predictive ability of potential predictors regarding MH. A $p < 0.05$ was regarded as statistically significant.

RESULTS

Demographics and the Exclusive Enteral Nutrition Program

The demographic and clinical data of all patients in the two groups at baseline and at the end of EEN are summarized in **Table 1**. There were no significant age, sex, or disease duration differences between the two groups. There was also no difference in the EEN program (EEN duration, daily energy intake, and weight gain during the EEN process) between the two groups.

TABLE 1 | Characteristics and clinical information for patients with Crohn's disease.

	sMH (n = 17)	sNMH (n = 33)	P
Age of onset (y)	11.1 (3.2)	12.2 (2.0)	0.20
Male n (%)	12 (70.6)	21 (63.6)	0.76
Disease duration (m)	3.0 (14.7)	4.0 (8.5)	0.79
EEN duration (w)	9.0 (1.0)	9.0 (2.0)	0.54
Daily energy intake (kcal/d)	2213.0 ± 84.7	2238.0 ± 58.2	0.81
Weight gain (kg)	4.3 ± 0.5	5.7 ± 0.5	0.11
SES-CD at baseline	8.7 ± 1.2	16.2 ± 1.0	<0.001
SES-CD at the end of EEN	1.0 (3.5)	4.0 (2.0)	<0.01
Lewis score at baseline	902.0 (1657.5)	1104.0 (978.5)	0.93
Lewis score at the end of EEN	56.0 (269.5)	143.5 (333.0)	0.19
wPCDAI at baseline	37.1 ± 3.1	47.1 ± 2.9	0.04
wPCDAI at the end of EEN	3.8 (15.0)	7.5 (7.5)	0.94
FCP at baseline (μg/g)	1816.0 (583.0)	1900.0 (0.0)	0.08
FCP at the end of EEN (μg/g)	254.0 (113.0)	250.0 (656.0)	0.46
ESR at baseline (mm/h)	46.1 ± 9.1	67.9 ± 4.8	0.02
ESR at the end of EEN (mm/h)	14.0 (21.5)	11.0 (20.3)	0.89
Hgb at baseline (g/L)	120.6 ± 4.0	114.3 ± 3.2	0.24
Hgb at the end of EEN (g/L)	131.9 ± 3.2	128.1 ± 2.3	0.33
ALB at baseline (g/L)	40.2 ± 1.2	35.1 ± 1.1	<0.01
ALB at the end of EEN (g/L)	44.2 ± 0.7	44.2 ± 0.6	0.95
B2/B3 at baseline, n (%)	0 (0.0)	9 (27.3)	0.02
B2/B3 at ending, n (%)	2 (11.8)	5 (15.2)	1.00
B2/B3 at 1 year post-EEN, n (%)	0 (0.0)	6 (18.2)	0.08
P1 at baseline, n (%)	5 (29.4)	5 (15.2)	0.28
P1 at the end of EEN, n (%)	5 (29.4)	4 (12.1)	0.29
P1 at 1 year post-EEN, n (%)	2 (11.8)	3 (9.1)	1.00
AZA/MTX, n (%)	9 (52.9)	14 (42.4)	0.56
Infliximab, n (%)	7 (41.2)	27 (81.8)	0.01

sMH, sustained mucosal healing; sNMH, sustained nonmucosal healing; y, year; m, month; w, week; EEN, exclusive enteral nutrition; SES-CD, Simple Endoscopic Score for Crohn's Disease; wPCDAI, weighted Pediatric Crohn's Disease Activity Index; FCP, fecal calprotectin; ESR erythrocyte sedimentation rate; ALB, albumin; Hgb, hemoglobin. AZA, azathioprine; MTX, methotrexate.

Disease Activity

The SES-CD in the sMH group was lower than that in the sNMH group both at baseline and at the end of EEN [sMH vs. sNMH: 8.7 ± 1.2 vs. 16.2 ± 1.0 , respectively, $p < 0.001$ at baseline; 1.0 (3.5) vs. 4.0 (2.0), respectively, $p < 0.01$ at the end of EEN] (Table 1). There were no significant differences in Lewis scores between the two groups at baseline or at the end of EEN (Table 1). The wPCDAI in the sMH group was lower than that in the sNMH group at baseline, but there was no difference at the end of EEN (sMH vs. sNMH: 37.1 ± 3.1 vs. 47.1 ± 2.9 , respectively, $p = 0.04$ at baseline) (Table 1).

Biochemical Markers

There were no significant differences in FCP or Hgb levels between the two groups at baseline or at the end of EEN (Table 1). The ESR in the sMH group was lower than that in the sNMH group at baseline, but there was no difference at the end of EEN (sMH vs. sNMH: 46.1 ± 9.1 vs. 67.9 ± 4.8 , respectively, $p = 0.02$ at baseline) (Table 1). The ALB level in the sMH group was higher than that in the sNMH group at baseline, but there was no difference at the end of EEN (sMH vs. sNMH: 40.2 ± 1.2 vs. 35.1 ± 1.1 , respectively, $p < 0.01$ at baseline) (Table 1).

Paris Classifications at Each Time

From Figure 2A, we can see the variation trend of the Paris Classifications in the two groups of patients from baseline to 1-year post-EEN. In the sMH group, the number of patients classified with L1 or normal mucosa (at the end of EEN or 1-year post-EEN) increased during follow-up, so there were more patients classified with L1 or normal mucosa in the sMH group at each time point [sMH vs. sNMH: 8 (47.1%) vs. 1 (3.0%), respectively, $p < 0.001$ at baseline; 11 (64.7%) vs. 4 (12.1%), respectively, $p < 0.001$ at the end of EEN; 12 (70.6%) vs. 1 (3.0%), respectively, $p < 0.001$ at 1-year post-EEN]. In the sMH group, the number of patients classified with L3 decreased during follow-up. However, in the sNMH group, patients classified with L3 decreased at the end of EEN but increased again at 1-year post-EEN during follow up, so there were fewer patients classified with L3 in the sMH group at baseline and at 1-year post-EEN, but no difference was shown at the end of EEN compared with the sNMH group [sMH vs. sNMH: 8 (47.1%) vs. 27 (81.8%), respectively, $p = 0.02$ at baseline; 2 (11.8%) vs. 14 (42.4%), respectively, $p = 0.05$ at the end of EEN; 1 (5.9%) vs. 27 (81.8%), respectively, $p < 0.001$ at 1-year post-EEN]. There were no differences in patients classified with L2 (Figure 2A), L4 (Figure 2B), and P1 (Table 1) between the two groups at each time point. At baseline, fewer patients were classified with B2/B3 in the sMH group [sMH vs. sNMH: 0 (0.0%) vs. 9 (7.3%), respectively, $p = 0.02$ at baseline], but at the end of EEN and at 1-year post-EEN, there were no differences in B2/B3 classification between the two groups (Table 1).

Maintenance Treatment After Exclusive Enteral Nutrition

For azathioprine (AZA)/MTX usage, there were no differences in the percentage of patients (Table 1) or time to exposure (Figure 3A) between the two groups. For infliximab (IFX), fewer patients received IFX treatment in the sMH group than in the

TABLE 2 | Predictive variables of MH at the end of EEN.

Variable	Univariate OR (95% CI)	P	Multivariate OR (95% CI)	P
SES-CD at baseline	1.44 (1.20–1.73)	0.00	1.40 (1.12–1.67)	0.00
ESR at baseline (mm/h)	1.02 (1.00–1.05)	0.04	/	/
ALB at baseline (g/L)	0.88 (0.79–0.98)	0.02	/	/
Hgb at baseline (g/L)	0.96 (0.93–1.00)	0.03	/	/
B2/B3	9.26 (1.06–80.93)	0.04	/	/

dependent variable in multivariate analysis: MH at the end of EEN. n=50 patients. MH, mucosal healing; EEN, exclusive enteral nutrition; OR, odds ratio; 95% CI, 95% confidence interval; SES-CD, Simple Endoscopic Score for Crohn's Disease; ESR erythrocyte sedimentation rate; ALB, albumin; Hgb, hemoglobin.

TABLE 3 | Predictive variables of sustained MH at 1-year post-EEN.

Variable	Univariate OR (95% CI)	P	Multivariate OR (95% CI)	P
SES-CD at baseline	1.29 (1.12–1.50)	0.001	1.33 (1.12–1.58)	0.001
wPCDAI at baseline	1.05 (1.00–1.10)	0.04	/	/
ESR at baseline (mm/h)	1.03 (1.00–1.05)	0.03	/	/
ALB at baseline (g/L)	0.85 (0.77–0.97)	0.01	/	/
L(1,2,3) at baseline				
L1		0.01	/	/
L2	40.00 (2.01–794.27)	0.02	/	/
L3	27.00 (2.92–249.48)	0.004	/	/
Early MH at the end of EEN	0.13 (0.04–0.51)	0.003	/	/

dependent variable in multivariate analysis: MH at 1 year post-EEN. $n = 50$ patients. MH, mucosal healing; EEN, exclusive enteral nutrition; OR, odds ratio; 95% CI, 95% confidence interval; SES-CD, Simple Endoscopic Score for Crohn's Disease; wPCDAI, weighted Pediatric Crohn's Disease Activity Index; ESR, erythrocyte sedimentation rate; ALB, albumin.

sNMH group [7 (41.2%) vs. 27 (81.8%), respectively, $p = 0.01$] (Table 1), and there was a longer exposure time to IFX in the sMH group than in the sNMH group (Figure 3B, $p < 0.001$).

The Predictor of Mucosal Healing to Exclusive Enteral Nutrition Treatment Short-Term: At the End of Exclusive Enteral Nutrition

Among these 50 patients, 23 patients had early MH at the end of EEN, so we first tried to identify variables at baseline that

were associated with early MH at the end of EEN, as shown in Table 1. We applied a two-step strategy based on a logistic regression model. In univariate logistic regression analysis, the SES-CD, ESR, ALB level, Hgb level, and B2/B3 classification at baseline were significantly associated with MH at the end of EEN (Table 2). Multivariate logistic regression analysis was then performed to assess these independent factors. Only the SES-CD at baseline was negatively associated with MH at the end of EEN (OR = 1.40 95% CI = 1.12–1.67, $p = 0.00$ in the multivariate model) (Table 2).

Long Term: 1-Year Post-EEN

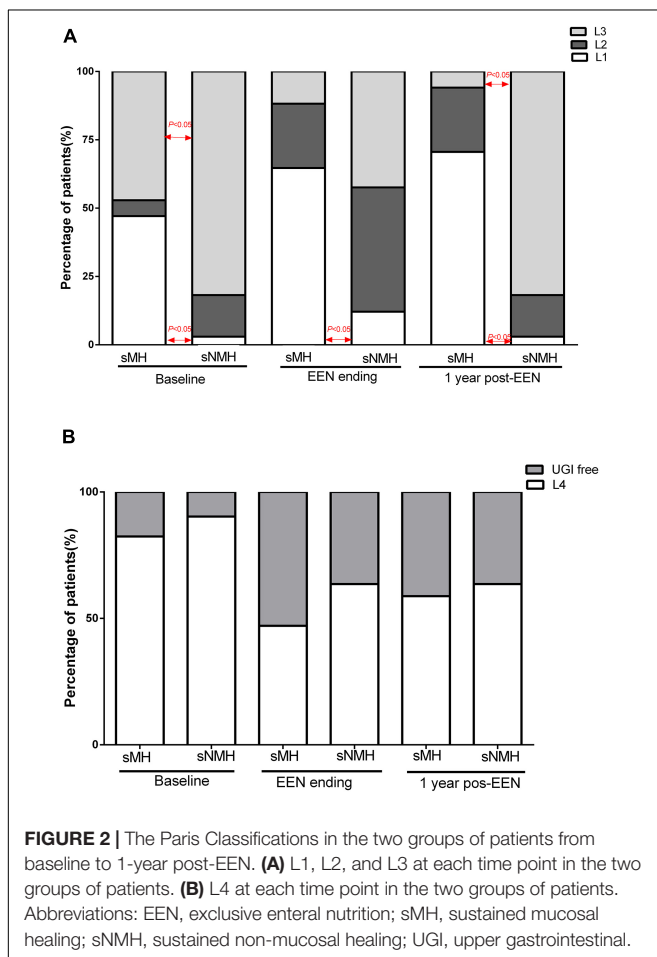
To identify the variables associated with MH at 1-year post-EEN, we also applied a two-step strategy based on a logistic regression model, as shown in Table 1. In univariate logistic regression analysis, the SES-CD, wPCDAI, ESR, ALB level, L (1,2,3) classification at baseline, and early MH at the end of EEN were significantly associated with MH at 1-year post-EEN (Table 3). However, in the multivariate logistic regression model, only the SES-CD at baseline was negatively associated with MH at 1-year post-EEN (OR = 1.33, 95% CI = 1.12–1.58, $p = 0.001$ in the multivariate model), and other variables were finally not included in the multivariate analysis (Table 3).

The Optimal Cutoff Value of the SES-CD at Baseline

Receiver operating characteristic curves were generated to determine the optimal cutoff value of the SES-CD at baseline for predicting MH at the end of EEN and 1-year post-EEN. At the end of EEN, the SES-CD at baseline showed an AUC of 0.91 (cutoff value: 11.5, sensitivity: 88.9%, specificity: 77.3%, $p = 0.00$, 95% CI: 0.83–0.99) (Figure 4A). At 1-year post-EEN, the SES-CD at baseline showed an AUC of 0.83 (cutoff value: 11.5, sensitivity: 81.3%, specificity: 82.4%, $p = 0.00$, 95% CI: 0.71–0.95) (Figure 4B).

Two-Year Follow-Up Post-EEN

Nine patients in the sMH group and 15 in the sNMH group completed the 2-year follow-up. Among them, eight patients maintained MH in the sMH group, and only three patients reached MH in the sNMH group [sMH vs. sNMH: 8 (88.9%) vs. 3 (20.0%), respectively, $p = 0.002$]. Two patients received IFX in the sMH group, and 13 patients received anti-TNF therapy (IFX or adalimumab) [sMH vs. sNMH: 2 (22.2%) vs. 13



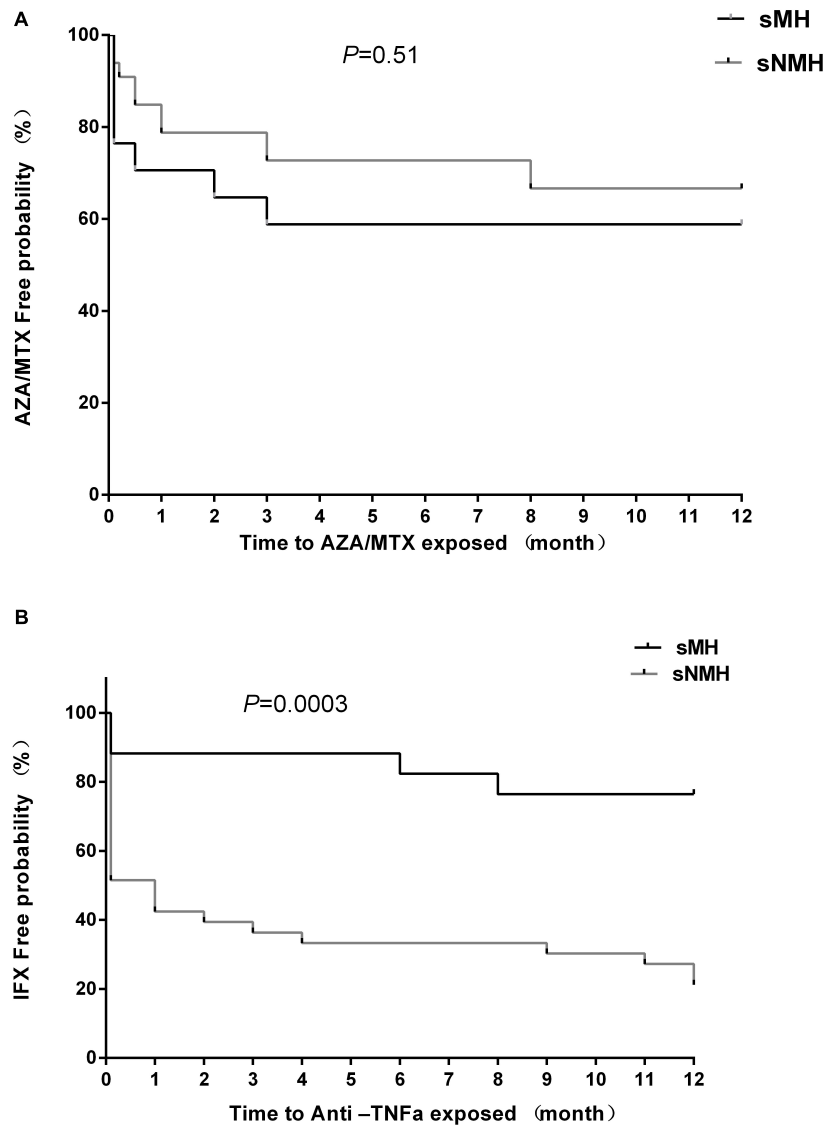


FIGURE 3 | Kaplan–Meier curve depicting the difference in the AZA/MTX-free (A) and infliximab-free (B) probability between the sMH and sNMH groups after EEN induction. Abbreviations: sMH, sustained mucosal healing; sNMH, sustained non-mucosal healing; AZA, azathioprine; MTX, methotrexate; IFX, infliximab.

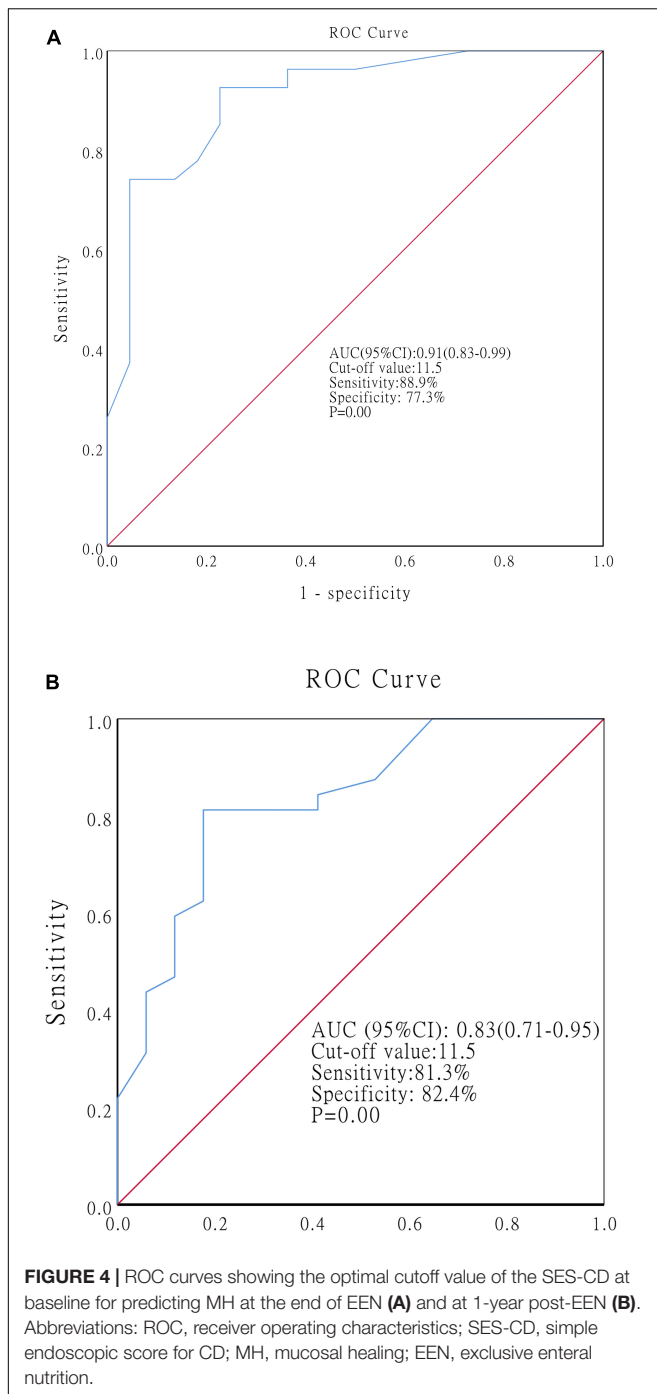
(86.7%), respectively, $p = 0.003$]. No patients in the sMH group needed surgery, but two patients in the sNMH group received surgery therapy.

DISCUSSION

Very few studies have examined long-term outcomes after EEN. In this study, we evaluated MH in pediatric CD patients 1-year post-EEN and found that the SES-CD at baseline could predict both short- and long-term MH after EEN.

In this study, the early MH rate at the end of EEN was 46%, similar to that in previous studies (11–15). One year after EEN, the MH rate in our patients was 34.0%, patients in the sMH group relapsed, and most patients in the sNMH

group maintained NMH after EEN. MH is difficult for CD patients to achieve, not to mention the difficulty in maintaining sustained MH (20). It is better to find the factors associated with MH after EEN in the short- and long-term to improve the disease process of CD patients. For the EEN protocol, **Table 1** shows that all patients in the two groups received high-energy intake each day, had an appropriate EEN duration (the median was 9 weeks in the 2 groups), and achieved excellent nutrient improvement (weight gain and Hgb and ALB levels), and clinical (wPCDAI), biochemical (ESR), and endoscopic responses during the EEN process, indicating that our EEN protocol was appropriate. More patients and a shorter exposure time to anti-TNF α were found in the sNMH group after EEN, meaning the maintenance choice was more aggressive in the sNMH group after EEN.



We found differences in the SES-CD, wPCDAI, ESR, and ALB levels at baseline between the two groups. Grover et al. (14) compared patients with sustained remission with patients with relapse 1-year after EEN, and they did not find that the variables pre-EEN, including the SES-CD, were different between the two groups. These results were different from our results and may need more similar studies in the future. However, studies have demonstrated that a wPCDAI < 57 and an FCP level < 500 $\mu\text{g/g}$ could be predictive factors of the response to EEN (18). We

did not find that the wPCDAI, and any biochemical markers, including the ESR, ALB level, and FCP level, were associated with MH after EEN in the multivariate model.

Several studies have shown that newly diagnosed pediatric CD patients who failed to reach clinical remission after induction therapy had predictors of poor outcomes (21–23). Early endoscopic remission has been reported to improve outcomes at the 1-year follow-up (14). This could also be found in our patients. In this study, among 23 patients who reached early MH at the end of EEN, 13 maintained sustained MH at 1-year post-EEN under immunomodulatory treatment. Among the 27 patients who did not reach early MH at the end of EEN, only 4 patients reached MH 1-year post-EEN. Poorer outcomes in the sNMH group were also observed 2-year post-EEN. However, early MH at the end of EEN was not associated with 1-year post-EEN in the multivariate logistic regression model, perhaps because of the high relapse rate in CD patients.

The SES-CD is the primary tool for measuring mucosal inflammation in clinical practice. Previous studies found that the SES-CD was strongly associated with the risk of surgery (24) and clinical recurrence in CD patients (25), and a low SES-CD at baseline was associated with the response to ustekinumab (26). For EEN, a study demonstrated that the SES-CD was related to the clinical response to EEN in colonic CD patients (27). In this study, we found that the SES-CD at baseline was associated with MH both at the end of EEN and 1-year post-EEN; to the best of our knowledge, this has not been reported before. We calculated that the cutoff value was 11.5. To obtain early MH and maintain sustained MH, patients with an SES-CD greater than 11.5 at baseline should be treated more aggressively with biologics. Because some more severe patients could combine IFX with EEN to induce remission, it has been reported that the combination of EEN and TNF α inhibitors was associated with faster clinical remission (5).

Whether the location of the disease influences the outcome of EEN is unclear (28). However, a study demonstrated that patients with isolated colonic classification (L2) showed a lower response to EEN treatment than patients with other classifications (29, 30), and ileal involvement could be a predictive factor of the response to EEN (18). We found more patients with L1 classification in the sMH group at each time point from baseline to 1-year post-EEN and fewer patients with L3 and B2/B3 classification in the sMH group at baseline than in the sNMH group. From **Table 3**, we can see that compared with the patients who presented with L1 classification, the patients with L2 or L3 classification had a high risk of maintaining NMH at 1-year post-EEN. However, we did not find an association of Paris Classifications with MH after EEN in the multivariate mode because of the limited sample size.

In conclusion, we found that the SES-CD at baseline was associated with MH at the end of EEN and 1-year post-EEN. Patients with an SES-CD < 11.5 had a high probability of reaching MH by EEN-inducing therapy and maintained sustained MH at 1-year post-EEN under immunomodulation. We suggest that patients with an SES-CD greater than 11.5 at baseline should be treated more aggressively with biologics.

This study has some limitations. This was a single-center study with a small sample size, which may cause us to not find an

association of Paris Classifications with MH after EEN. In the future, we need to obtain more reliable and representative data to find the association of Paris Classifications with MH after EEN.

DATA AVAILABILITY STATEMENT

The original contributions presented in the study are included in the article/**Supplementary Material**, further inquiries can be directed to the corresponding authors.

ETHICS STATEMENT

The studies involving human participants were reviewed and approved by Ethics Committee of the Children's Hospital of Fudan University ([2017]131). Written informed consent to participate in this study was provided by the participants' legal guardian/next of kin.

AUTHOR CONTRIBUTIONS

YH, YW, and WT contributed to the design of the study and interpretation of data. WT, WH, and PS performed the statistical

analysis. WT, ZY, JW, and YZ performed the acquisition of data. WT drafted the manuscript. YH critically revised the manuscript for important intellectual content. All authors reviewed and approved the final version of the manuscript.

FUNDING

This research was supported by the "Star fund project" of Guangdong Maternal and Child Health Care Association: EK00000083.

ACKNOWLEDGMENTS

We would like to thank all patients and families participating in the study.

SUPPLEMENTARY MATERIAL

The Supplementary Material for this article can be found online at: <https://www.frontiersin.org/articles/10.3389/fped.2022.874425/full#supplementary-material>

REFERENCES

- Herrador-Lopez M, Martin-Masot R, Navas-Lopez VM. EEN yesterday and today . CDED today and tomorrow. *Nutrients*. (2020) 12:3793. doi: 10.3390/nu12123793
- Narula N, Dhillon A, Zhang D, Sherlock ME, Tondeur M, Zachos M. Enteral nutritional therapy for induction of remission in Crohn's disease. *Cochrane Database Syst Rev*. (2018) 4:CD000542. doi: 10.1002/14651858.CD000542.pub3
- Gavin J, Ashton JJ, Heather N, Marino LV, Beattie RM. Nutritional support in paediatric Crohn's disease: outcome at 12 months. *Acta Paediatr*. (2018) 107:156–62. doi: 10.1111/apa.14075
- Hojsak I, Pavic AM, Misak Z, Kolacek S. Risk factors for relapse and surgery rate in children with Crohn's disease. *Eur J Pediatr*. (2014) 173:617–21. doi: 10.1007/s00431-013-2230-1
- Sassine S, Zekhnine S, Qaddouri M, Djani L, Cambron-Asselin C, Savoie-Robichaud M, et al. Factors associated with time to clinical remission in pediatric luminal Crohn's disease: a retrospective cohort study. *JGH Open*. (2021) 5:1373–81. doi: 10.1002/jgh3.12684
- Tang W, Huang Y, Shi P, Wang Y, Zhang Y, Xue A, et al. Effect of exclusive enteral nutrition on the disease process, nutrition status, and gastrointestinal microbiota for Chinese children with Crohn's disease. *JPEN J Parenter Enteral Nutr*. (2021) 45:826–38. doi: 10.1002/jpen.1938
- van Rheenen PF, Aloï M, Assa A, Bronsky J, Escher JC, Fagerberg UL, et al. The medical management of paediatric Crohn's disease: an ECCO-ESPGHAN guideline update. *J Crohns Colitis*. (2020):jjaa161. doi: 10.1093/ecco-jcc/jjaa161 [Epub ahead of print].
- Turner D, Levine A, Walters TD, Focht G, Otley A, Lopez VN, et al. Which PCDAI version best reflects intestinal inflammation in pediatric Crohn disease? *J Pediatr Gastroenterol Nutr*. (2017) 64:254–60. doi: 10.1097/MPG.0000000000001227
- Peyrin-Biroulet L, Reinisch W, Colombel JF, Mantzaris GJ, Kornbluth A, Diamond R, et al. Clinical disease activity, C-reactive protein normalisation and mucosal healing in Crohn's disease in the SONIC trial. *Gut*. (2014) 63:88–95. doi: 10.1136/gutjnl-2013-304984
- Peyrin-Biroulet L, Sandborn W, Sands BE, Reinisch W, Bemelman W, Bryant RV, et al. Selecting therapeutic targets in inflammatory bowel disease (STRIDE): determining therapeutic goals for treat-to-target. *Am J Gastroenterol*. (2015) 110:1324–38. doi: 10.1038/ajg.2015.233
- Luo Y, Yu J, Lou J, Fang Y, Chen J. Exclusive enteral nutrition versus infliximab in inducing therapy of pediatric Crohn's disease. *Gastroenterol Res Pract*. (2017) 2017:6595048. doi: 10.1155/2017/6595048
- Chen JM, He LW, Yan T, Guo XE, Hu PJ, Peng JS, et al. Oral exclusive enteral nutrition induces mucosal and transmural healing in patients with Crohn's disease. *Gastroenterol Rep (Oxf)*. (2019) 7:176–84. doi: 10.1093/gastro/goy050
- Grover Z, Muir R, Lewindon P. Exclusive enteral nutrition induces early clinical, mucosal and transmural remission in paediatric Crohn's disease. *J Gastroenterol*. (2014) 49:638–45. doi: 10.1007/s00535-013-0815-0
- Grover Z, Burgess C, Muir R, Reilly C, Lewindon PJ. Early mucosal healing with exclusive enteral nutrition is associated with improved outcomes in newly diagnosed children with luminal Crohn's disease. *J Crohns Colitis*. (2016) 10:1159–64. doi: 10.1093/ecco-jcc/jjw075
- Urlep D, Benedik E, Breclj J, Orel R. Partial enteral nutrition induces clinical and endoscopic remission in active pediatric Crohn's disease: results of a prospective cohort study. *Eur J Pediatr*. (2020) 179:431–8. doi: 10.1007/s00431-019-03520-7
- Logan M, Clark CM, Ijaz UZ, Gervais L, Duncan H, Garrick V, et al. The reduction of faecal calprotectin during exclusive enteral nutrition is lost rapidly after food re-introduction. *Aliment Pharmacol Ther*. (2019) 50:664–74. doi: 10.1111/apt.15425
- Gkikas K, Logan M, Nichols B, Ijaz UZ, Clark CM, Svolos V, et al. Dietary triggers of gut inflammation following exclusive enteral nutrition in children with Crohn's disease: a pilot study. *BMC Gastroenterol*. (2021) 21:454. doi: 10.1186/s12876-021-02029-4
- Moriczi M, Pujol-Muncunill G, Martin-Masot R, Jimenez Trevino S, Segarra Canton O, Ochoa Sangrador C, et al. Predictors of response to exclusive enteral nutrition in newly diagnosed Crohn's disease in children: PRESENCE study from SEGHPN. *Nutrients*. (2020) 12:1012. doi: 10.3390/nu12041012
- Ibd Working Group of the European Society for Paediatric Gastroenterology H, Nutrition. Inflammatory bowel disease in children and adolescents: recommendations for diagnosis—the Porto criteria. *J Pediatr Gastroenterol Nutr*. (2005) 41:1–7. doi: 10.1097/01.mpg.0000163736.30261.82
- D'Arcangelo G, Oliva S, Dilillo A, Viola F, Civitelli F, Isoldi S, et al. Predictors of long-term clinical and endoscopic remission in children with crohn disease

- treated with infliximab. *J Pediatr Gastroenterol Nutr.* (2019) 68:841–6. doi: 10.1097/MPG.0000000000002262
21. Levine A, Turner D, Pfeffer Gik T, Amil Dias J, Veres G, Shaoul R, et al. Comparison of outcomes parameters for induction of remission in new onset pediatric Crohn's disease: evaluation of the porto IBD group "growth relapse and outcomes with therapy" (GROWTH CD) study. *Inflamm Bowel Dis.* (2014) 20:278–85. doi: 10.1097/01.MIB.0000437735.11953.68
 22. Levine A, Chanchlani N, Hussey S, Ziv-Baran T, Escher JC, Amil Dias J, et al. Complicated disease and response to initial therapy predicts early surgery in paediatric Crohn's disease: results from the porto group GROWTH study. *J Crohns Colitis.* (2020) 14:71–8. doi: 10.1093/ecco-jcc/jjz111
 23. Haisma SM, Verkade HJ, Scheenstra R, van der Doef HPJ, Bodewes F, van Rheenen PF. Time-to-reach target Calprotectin level in newly diagnosed patients with inflammatory bowel disease. *J Pediatr Gastroenterol Nutr.* (2019) 69:466–73. doi: 10.1097/MPG.0000000000002458
 24. Rispo A, Imperatore N, Testa A, Bucci L, Luglio G, De Palma GD, et al. Combined endoscopic/sonographic-based risk matrix model for predicting one-year risk of surgery: a prospective observational study of a tertiary centre severe/refractory Crohn's disease cohort. *J Crohns Colitis.* (2018) 12:784–93. doi: 10.1093/ecco-jcc/jjy032
 25. Akiyama S, Yamada A, Ollech JE, Komaki Y, Komaki F, Pekow J, et al. Predictability of simple endoscopic score for Crohn's disease for postoperative outcomes in Crohn's disease. *J Gastroenterol Hepatol.* (2021) 36:2785–93. doi: 10.1111/jgh.15540
 26. Murate K, Maeda K, Nakamura M, Sugiyama D, Wada H, Yamamura T, et al. Endoscopic activity and serum TNF-alpha level at baseline are associated with clinical response to Ustekinumab in Crohn's disease patients. *Inflamm Bowel Dis.* (2020) 26:1669–81. doi: 10.1093/ibd/izaa086
 27. Xu Y, Guo Z, Huang L, Gong J, Li Y, Gu L, et al. A nomogram for predicting the response to exclusive enteral nutrition in adult patients with isolated colonic Crohn's disease. *Therap Adv Gastroenterol.* (2019) 12:1756284819881301. doi: 10.1177/1756284819881301
 28. Souza GN, Draghi PF, Yonamine GH. Oral and enteral nutrition therapy in inflammatory bowel diseases among the pediatric population: a literature review. *Rev Paul Pediatr.* (2020) 38:e2019032. doi: 10.1590/1984-0462/2020/38/2019032
 29. Xu YH, Guo Z, Cao L, Xie TB, Shen WS, Li Y, et al. Isolated colonic Crohn's disease is associated with a reduced response to exclusive enteral nutrition compared to ileal or ileocolonic disease. *Clin Nutr.* (2019) 38:1629–35. doi: 10.1016/j.clnu.2018.08.022
 30. de Bie C, Kindermann A, Escher J. Use of exclusive enteral nutrition in paediatric Crohn's disease in the Netherlands. *J Crohns Colitis.* (2013) 7:263–70. doi: 10.1016/j.crohns.2012.07.001
- Conflict of Interest:** The authors declare that the research was conducted in the absence of any commercial or financial relationships that could be construed as a potential conflict of interest.
- Publisher's Note:** All claims expressed in this article are solely those of the authors and do not necessarily represent those of their affiliated organizations, or those of the publisher, the editors and the reviewers. Any product that may be evaluated in this article, or claim that may be made by its manufacturer, is not guaranteed or endorsed by the publisher.
- Copyright © 2022 Tang, Hu, Shi, Ye, Wu, Zhang, Wang and Huang. This is an open-access article distributed under the terms of the Creative Commons Attribution License (CC BY). The use, distribution or reproduction in other forums is permitted, provided the original author(s) and the copyright owner(s) are credited and that the original publication in this journal is cited, in accordance with accepted academic practice. No use, distribution or reproduction is permitted which does not comply with these terms.