



Risk Factors for Poor Prognosis of Severe Infection in Children With Idiopathic Nephrotic Syndrome: A Double-Center, Retrospective Study

Hengci Zhang^{1,2†}, Shiyuan Qiu^{1,3†}, Cheng Zhong^{1,2}, Lin Shi^{1,2}, Jiacheng Li^{1,2}, Tao Zhang^{2,4}, Xiaoping Zhu^{2,4*} and Mo Wang^{1,2*}

¹ Department of Nephrology, Children's Hospital of Chongqing Medical University, Ministry of Education Key Laboratory of Child Development and Disorders, National Clinical Research Center for Child Health and Disorders, China International Science and Technology Cooperation Base of Child Development and Critical Disorders, Chongqing Key Laboratory of Pediatrics, Chongqing, China, ² Western Pediatric Development Union, Chongqing, China, ³ Pediatric Internal Medicine Department, Chongqing You You Baobei Women's and Children's Hospital, Chongqing, China, ⁴ Department of Pediatrics, The Affiliated Hospital of Guizhou Medical University, Guiyang, China

OPEN ACCESS

Edited by:

Sami Sanjad,
American University of Beirut Medical
Center, Lebanon

Reviewed by:

Donald Lee Batisky,
Emory University, United States
Ali Asghar Anwar Lanewala,
Sindh Institute of Urology and
Transplantation, Pakistan

*Correspondence:

Xiaoping Zhu
zxp_1963819@163.com
Mo Wang
wangmo_cqmu@163.com

†These authors have contributed
equally to this work and share first
authorship

Specialty section:

This article was submitted to
Pediatric Nephrology,
a section of the journal
Frontiers in Pediatrics

Received: 20 January 2021

Accepted: 18 June 2021

Published: 14 July 2021

Citation:

Zhang H, Qiu S, Zhong C, Shi L, Li J,
Zhang T, Zhu X and Wang M (2021)
Risk Factors for Poor Prognosis of
Severe Infection in Children With
Idiopathic Nephrotic Syndrome: A
Double-Center, Retrospective Study.
Front. Pediatr. 9:656215.
doi: 10.3389/fped.2021.656215

Background: Infection is the most common complication of Idiopathic Nephrotic Syndrome (INS) and the main cause of INS recurrence, severe infection and even leading to mortality. The purpose of this study was to investigate the risk factors of severe infection in INS children and the clinical parameters influencing prognosis.

Methods: Totally 147 children with INS and concomitant infections were enrolled and classified into the severe infection group (SIG) and Non-severe infection group (Non-SIG). The clinical characteristics and auxiliary examination results were compared between the two groups, and the early-warning parameters for severe infection and risk factors for poor prognosis were evaluated.

Results: There were 49 patients in the SIG, 98 patients in the Non-SIG. In the SIG, the most common severe infections disease included severe pneumonia (63.6%), severe sepsis (30.6%), septic shock (4.1%). In SIG, Gram-positive bacteria (GPB) were more common, as was respiratory syncytial virus (RSV), and the three most common strains were *Pseudomonas aeruginosa*, *Staphylococcus aureus* (SA) and *Staphylococcus epidermidis*. There were more steroid-resistant nephrotic syndrome and combination of steroids and immunosuppressants in SIG, compared with the Non-SIG ($P = 0.000$). Patients in the SIG has lower complement 3 (C3, ≤ 0.55 g/L) and absolute lymphocyte count (ALC, $\leq 1.5 \times 10^9/L$) ($P = 0.004$). Logistic regression analysis revealed that the independent risk factors for severe infections were the combined use of immunosuppressants [95% confidence interval (CI): 1.569–463.541, $P = 0.023$], steroid resistance (95% CI: 4.845–2,071.880, $P = 0.003$), C-reactive protein (CRP) ≥ 8 mg/L (95% CI: 43.581–959, 935.668, $P = 0.001$), and infections caused by GPB (95% CI: 27.126–2,118, 452.938, $P = 0.002$), influenza (95% CI: 2.494–1, 932.221, $P = 0.012$) and RSV (95% CI: 5.011–24 963.819, $P = 0.007$). The patients in the SIG were classified into the survival group ($N = 39$) and the mortality group ($N = 5$). Logistic regression analysis showed that white blood cell count (WBC) $> 15 \times 10^9/L$ (95% CI: 1.046–2.844, $P = 0.033$) was an independent risk factor of poor prognosis for these patients.

Conclusions: Resistance to steroids, combined with steroids and IS agents, and GPB infections (especially SA) are high-risk factors for severe infection in children with INS. We should monitor $\text{CRP} \geq 8 \text{ mg/L}$, $\text{C3} \leq 0.55 \text{ g/L}$ and $\text{ALC} \leq 1.5 \times 10^9/\text{L}$ to avoid developing severe infection. Accompanied by an increase in ANC, WBC significantly increased, suggesting a fatal infection.

Keywords: idiopathic nephrotic syndrome, severe infection, risk factor, prognosis, children

INTRODUCTION

Idiopathic nephrotic syndrome (INS) is one of the most common kidney diseases in children. It is characterized by heavy proteinuria, pitting edema, hypoalbuminemia, and hyperlipidemia. INS occurs in 1.15–16.9 per 100,000 children, and its incidence varies by ethnicity and region (1). Infection is the most common complication of INS; it hampers the treatment of the underlying kidney disease, leads to INS relapse, increases rates of unplanned hospitalizations, and even leads to increased mortality. Several recent reports have evaluated the clinical characteristics and risk factors in children with INS and infections (2, 3). However, few studies have assessed the risk factors for serious infections associated with INS and the risk factors for poor prognosis of infections. The purpose of this study was to investigate the risk factors of severe infections in children with INS and the clinical parameters leading to poor prognosis.

MATERIALS AND METHODS

Study Population

This study enrolled children aged 0–18 years with INS and concomitant infections who were hospitalized in the Children's Hospital of Chongqing Medical University and the Affiliated Hospital of Guizhou Medical University, from January 2013 to October 2019. Written informed consent was obtained from parents or legal guardians, and this study complied with the ethical principles of the Helsinki Declaration of the World Medical Association. All the patients met the following criteria: (1) An onset age from birth to 18 years. (2) The definition of nephrotic syndrome (NS) included: ① nephrotic-range proteinuria: urine protein/creatinine ratio (UPCR) ≥ 200.0 (mg/mmol) in spot morning urine or 24 h urine quantification $\geq 50 \text{ mg/kg/day}$ ② hypoproteinaemia: serum albumin $< 25 \text{ g/L}$, ③ hyperlipidemia: serum cholesterol higher than 5.7 mmol/L and ④ varied degrees of edema. ① and ② are necessary for diagnosis. Children were excluded from congenital nephrotic syndrome, any other secondary NS, such as Henoch–Schoenlein purpura nephritis, lupus nephritis.

Clinical Data

The retrieved clinical data of children with INS who met the inclusion criteria were as follows: (1) Baseline characteristics, including sex, age, duration, usage, duration of steroid and immunosuppressive (IS) therapy. IS agents included cyclosporine, tacrolimus, mycophenolate, cyclophosphamide; (2) Laboratory data were collected, including complete blood

count, urinalysis, alanine aminotransferase (ALT), aspartate aminotransferase (AST), alkaline phosphatase (ALP), serum urea nitrogen, serum creatinine, uric acid, serum albumin, serum potassium, serum sodium, serum chlorine, serum calcium, C-reactive protein (CRP), procalcitonin (PCT), total cholesterol (Tch), triglycerides, high-density lipoprotein (HDL), low-density lipoprotein (LDL), prothrombin time (PT), activated partial thromboplastin time (APTT), fibrinogen (Fib), D-dimer, immunoglobulin G (IgG), immunoglobulin A (IgA), immunoglobulin M (IgM), immunoglobulin E (IgE), complement 3 (C3), complement 4 (C4), and pathogens isolated by specimen culture (e.g., blood, urine, sputum, cerebrospinal fluid, and bronchoalveolar lavage fluid), antigen testing from blood, or histological material from a definite site of infection. Because complement detection helped to rule out nephropathy caused by autoimmune diseases (4), and children with INS were often accompanied by IgG deficiency, resulting in an increased risk of infection (5), almost all of the subjects in this study were tested for complement and immunoglobulin.

Definitions

The Standard definitions of the outcome of INS were in **Table 1** (6). Infection was defined as a suspected or proven infection caused by any pathogen or a clinical syndrome associated with a high probability of infection. Evidence of infection includes positive findings on clinical exam, imaging, or laboratory tests. We referred to the clinical manifestations, biochemical indicators, the definitions of severe infections in adults with INS (7, 8) and related diseases that cause INS infection in children (9–12). Finally, based on the International Guidelines for Management of Severe Sepsis and Septic Shock (2012) (13), the principle of severe infection was when children with INS have signs and symptoms of inflammation with following conditions occur: variations in general signs (at least two), variations in indicators of inflammation (at least one) and at least one of the variations in organ function, tissue perfusion or hemodynamic variations, as detailed in **Table 2**. The prognosis was determined based on the post-treatment conditions of the children, who were classified into good prognosis (survival group) and poor prognosis (mortality group) groups. The good prognosis was defined as symptoms and signs of inflammation are restored, without the manifestations of infection. The poor prognosis was defined as mortality.

Statistical Analysis

Statistical analysis was conducted using the SPSS 22.0 statistical software (IBM Corporation, NY, United States). In the

TABLE 1 | Relevant definitions in nephrotic syndrome.

	Definition
Term	
Relapse	Urine albumin 3+ or 4+ or proteinuria >40 mg/m ² per h or urinary protein: creatinine ratio >2.0 (mg/mg) for 3 consecutive days
SSNS	Complete remission within 4 weeks of prednisone or prednisolone (PDN) at the standard dose (60 mg/m ² /day or 2 mg/kg/day, maximum 60 mg/day)
SRNS	Persistent proteinuria despite 60 mg/m ² or 2 mg/kg for 8 weeks, after ensuring no infection or non-adherence to medication
SDNS	2 consecutive relapses occurring while weaning to alternate-day steroids or within 2 weeks of steroid discontinuation

SSNS, steroid-sensitive nephrotic syndrome; SRNS, steroid-resistant nephrotic syndrome; SDNS, steroid-dependent nephrotic syndrome.

TABLE 2 | General variables and definitions of severe infection.

General signs
Fever (>38.5°C)
Hypothermia (<35°C)
Heart rate more than two SD above the normal value for age
Tachypnea (Respiratory rate higher than WHO classification for age)
Altered mental status
Inflammatory variables
Leukocytosis (WBC count > 12,000 μL^{-1} or higher than the normal value for age)
Leukopenia (WBC count <4,000 μL^{-1} or below the normal value for age)
Plasma C-reactive protein more than two SD above the normal value
Plasma procalcitonin more than two SD above the normal value
Hemodynamic variables
Arterial hypotension (SBP less than two SD below normal value for age)
Organ dysfunction variables
Arterial hypoxemia ($\text{PaO}_2/\text{FIO}_2 < 300$)
Acute oliguria (urine output <0.5 mL $\text{kg}^{-1} \text{ h}^{-1}$ for at least 2 h despite adequate fluid resuscitation)
Coagulation abnormalities
Ileus (absent bowel sounds)
Tissue perfusion variables
Hyperlactatemia (Lactate above upper limits laboratory normal)
Decreased capillary refill or mottling

SD, standard deviation; WBC, white blood cell; SBP, systolic blood pressure; WHO, World Health Organization.

assessment of differences in clinical parameters, categorical data were evaluated using contingency tables and the chi-square test. Quantitative data with a normal distribution were analyzed using an independent sample *t*-test. On the contrary, quantitative data that did not follow a normal distribution were analyzed using the rank-sum test. Normality testing was performed using the one-sample Kolmogorov-Smirnov test. In the binary logistic regression analysis, parameters were

entered following the “forward Wald” method. The sensitivity and specificity of each parameter were compared using a univariate receiver operating characteristic (ROC) curve. For significance criteria, values of $P < 0.05$ were considered statistically significant, and values of $P < 0.01$ were considered highly statistically significant.

Study Design

Patients who met the criteria and were complicated by infections and admitted to the Children’s Hospital of Chongqing Medical University and the Affiliated Hospital of Guizhou Medical University, from January 2013 to October 2019 were into our research. According to the severity of the infections, the patients were divided into severe infection group (SIG) or Non-severe infection group (Non-SIG) (who didn’t match the criteria of severe infection) and matched according to the ratio of 1:2. We retrospectively reviewed the medical data, including baseline characteristics, laboratory testing, pathogens. The flowchart of this study is shown in **Figure 1**.

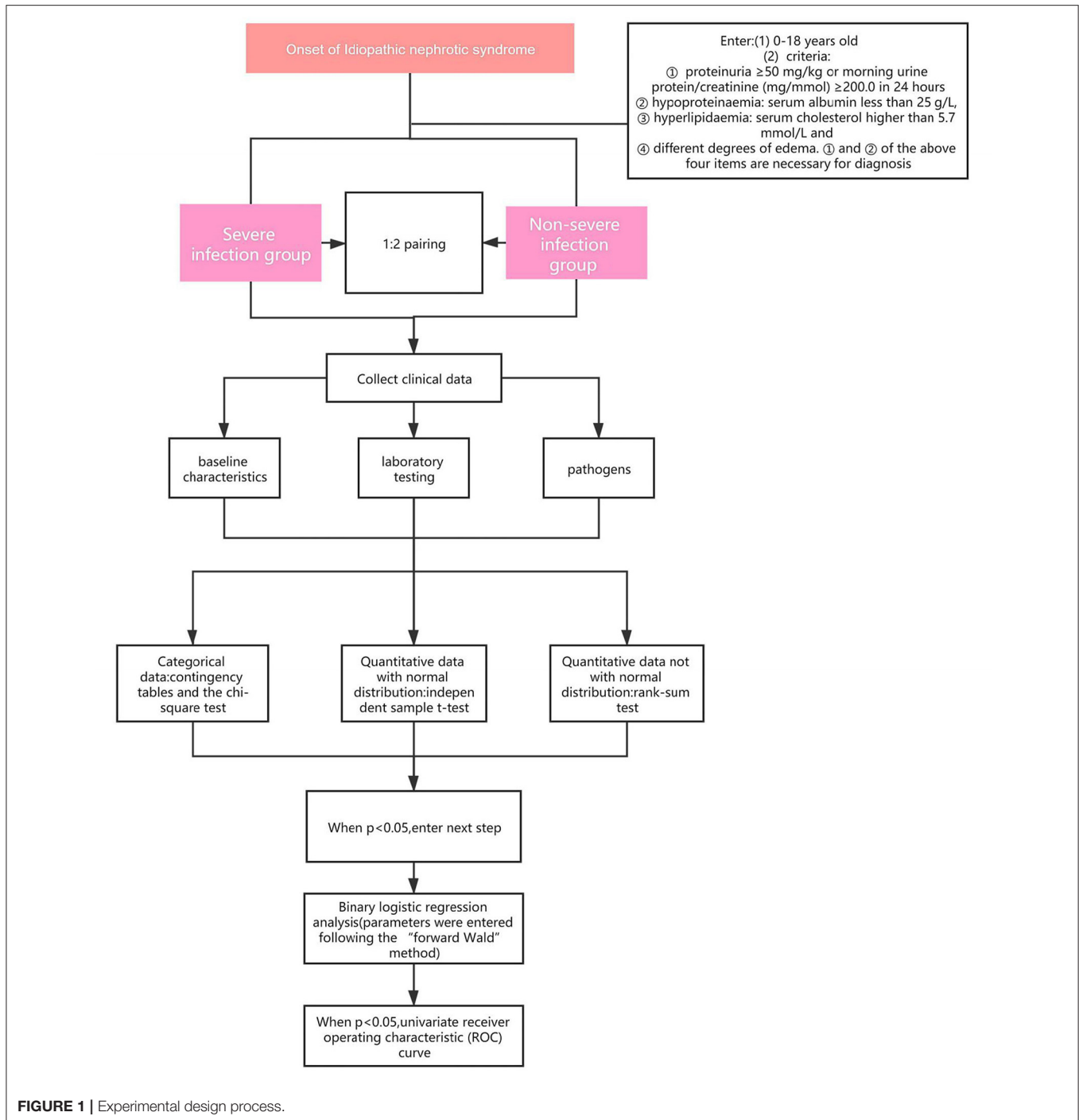
RESULTS

Baseline Characteristics

In total, 147 children, including 111 (63.8%) boys and 36 (36.2%) girls, suffering from INS with concomitant infections were enrolled in this study. The youngest child was 6 months old, and the oldest was 16.4 years old. The median age was 5.25 years old, and there was no statistically significant difference between the two groups ($P > 0.05$) (**Table 3**). Among the children, the shortest and longest disease durations were 0.03 and 106.13 months, respectively, and the median was 0.67 months. There were 49 children in the SIG and 98 in the Non-SIG. The SIG primarily developed severe pneumonia ($n = 31$, 63.3%), severe sepsis ($n = 15$, 30.6%), septic shock ($n = 2$, 4.1%), and severe chickenpox ($n = 1$, 2.0%); whereas, the Non-SIG primarily developed pneumonia ($n = 81$, 82.7%), urinary tract infection (UTI) ($n = 12$, 12.2%), and upper respiratory tract infection (URTI) ($n = 5$, 5.1%).

Clinical Data Analysis

Through statistical analysis of clinical data, we found that there were many differences between SIG and Non-SIG. The percentage of relapsed cases and SRNS in SIG were higher than those Non-SIG (63.3 vs. 30.6%, 51.0 vs. 10.2%, respectively). The number of steroids (≥ 0.5 mg/kg) users and immunosuppressant users in SIG was significantly higher than that in the Non-SIG (46.9 vs. 16.3%, 36.7 vs. 4.1%). There were 18 cases using immunosuppressive agents, including 12 cases using tacrolimus, of which 2 cases were combined with mycophenolate mofetil and 1 case was combined with cyclophosphamide. The remaining 4 cases used mycophenolate mofetil alone and 2 cases used cyclophosphamide alone. Steroids and immunosuppressants for SIG were used longer than for Non-SIG. In the auxiliary examination, we also found that there were significant differences between the two groups. The ANC, PCT, PT, and APTT in



the SIG were significantly higher than those in the Non-SIG, while ALC, Tch, LDL, and C3 were significantly lower than those in the Non-SIG. Other indicators were also significantly different, such as WBC, CRP, uric acid, urea nitrogen, and other indicators SIG are higher than Non-SIG. The SIG group's Fib, serum potassium, sodium, etc. were lower than the Non-SIG group (Table 3).

Analysis of Pathogens and Drug Resistance in the Non-SIG and SIG

Based on the data from blood, sputum, and urine cultures obtained from 147 children with INS and infections during hospitalization, 30 of them were detected and 46 strains were isolated. The three most common types in the SIG were *Pseudomonas aeruginosa* (three strains), *Staphylococcus aureus*

TABLE 3 | Demographic characteristics, laboratory data of children with INS in the severe and non-severe infection group.

	Non-SIG (N = 98)		SIG (N = 49)		X ² value	p-value
	Summary	N	Summary	N		
Baseline characteristics						
Male	73 (74.5%)	98	38 (77.6%)	49	0.166	0.684
Female	25 (25.5%)	98	11 (22.4%)	49		
Duration (months)	0.37 (0.23, 1.78)	98	3.00 (0.67, 12.00)	49	Z = -3.846	0.000**
Age (years)	5.17 (2.52, 9.38)	98	6.00 (2.67, 10.00)	49	Z = -0.321	0.749
Disease conditions						
Initial episode	68 (69.4%)	98	18 (36.7%)	49	14.347	0.000**
Relapse	30 (30.6%)	98	31 (63.3%)	49		
SSNS	82 (83.7%)	98	19 (38.8%)	49	32.434	0.000**
SRNS	10 (10.2%)	98	25 (51.0%)	49		
SDNS	6 (6.1%)	98	5 (10.2%)	49		
Treatments before infection						
Duration of steroid (days)	0 (0, 0)	98	63 (0.362)	49	Z = -5.135	0.000**
MP pulse	1 (1.0%)	98	4 (8.2%)	49	3.132	0.077
Steroid dosage per day						
<0.5 mg/kg	82 (83.7%)	98	26 (53.1%)	49		
0.5–1.5 mg/kg	10 (10.2%)	98	15 (30.6%)	49	15.146	0.001**
> 1.5 mg/kg	6 (6.1%)	98	8 (16.3%)	49		
IS therapy (n)	4 (4.1%)	98	18 (36.7%)	49	27.369	0.000**
Duration of IS (days)	0 (0, 0)	98	0 (0, 11)	49	-5.141	0.000**
Auxiliary examinations						
WBC ($\times 10^9/L$)	10.18 (8.25, 12.13)	98	13.25 (9.79, 17.34)	49	Z = -3.850	0.000**
ALC ($\times 10^9/L$)	3.27 (2.23, 4.71)	98	2.46 (1.56, 3.74)	49	Z = -2.889	0.004**
ANC ($\times 10^9/L$)	5.46 (3.92, 8.58)	98	9.99 (6.33, 12.33)	49	Z = -4.442	0.000**
PLT ($\times 10^9/L$)	390.0 (313.5, 459.5)	98	345.0 (244.0, 484.5)	49	Z = -1.448	0.147
Hb (g/L)	137 (125, 149)	98	122 (96, 144)	49	Z = -3.276	0.001**
CRP \geq 8 mg/L (n)	1 (1.0%)	98	22 (44.9%)	49	47.651	0.000**
PCT (ng/ml)	0.05 (0.05, 0.10)	85	0.65 (0.10, 11.29)	46	Z = -5.812	0.000**
Serum albumin (g/L)	16.7 (14.7, 19.3)	98	17.2 (13.4, 22.7)	49	Z = -0.072	0.943
ALT (U/L)	16.0 (10.4, 23.8)	98	25.1 (14.8, 32.1)	49	Z = -3.493	0.000**
AST (U/L)	33.3 (24.7, 43.2)	98	31.2 (22.4, 51.3)	49	Z = -0.557	0.578
ALP (U/L)	163.6 (122.8, 199.3)	98	101.6 (77.3, 139.3)	49	Z = -5.519	0.000**
Serum uric acid ($\mu\text{mol/L}$)	326.5 (258.5, 374.0)	98	360.0 (234.0, 506.2)	49	Z = -2.624	0.009**
Serum urea nitrogen (mmol/L)	4.90 (3.78, 6.93)	98	7.64 (4.21, 12.32)	49	Z = -2.750	0.006**
Serum creatinine ($\mu\text{mol/L}$)	33.50 (25.68, 50.50)	98	45.90 (29.35, 116.25)	49	Z = -1.354	0.176
Serum potassium (mmol/L)	4.50 \pm 0.71	98	4.04 \pm 0.72	49	t = 3.670	0.000**
Serum sodium (mmol/L)	136.30 (132.55, 138.75)	98	132.20 (128.95, 137.10)	49	Z = -3.048	0.002**
Serum chlorine (mmol/L)	103.85 (100.20, 106.83)	98	101.50 (96.50, 105.05)	49	Z = -2.554	0.011*
Serum calcium (mmol/L)	1.94 (1.82, 2.05)	98	1.87 (1.73, 2.09)	49	Z = -1.459	0.145
Tch (mmol/L)	10.76 \pm 3.10	98	8.86 \pm 3.53	49	t = 3.337	0.001**
Triglyceride (mmol/L)	2.98 (2.01, 4.36)	98	3.14 (2.43, 4.17)	49	Z = -0.489	0.625
LDL (mmol/L)	7.86 \pm 2.96	98	5.66 \pm 3.23	49	t = 4.112	0.000**
HDL (mmol/L)	1.71 (1.23, 2.21)	98	1.50 (0.81, 2.16)	49	Z = -1.724	0.085
IgG (g/L)	2.24 (1.36, 3.02)	97	1.88 (0.83, 4.29)	48	Z = -0.534	0.594
IgA (g/L)	0.85 (0.63, 1.35)	97	0.89 (0.62, 1.30)	48	Z = -0.089	0.929
IgM (g/L)	1.76 (1.31, 2.40)	97	1.49 (1.09, 2.22)	48	Z = -1.589	0.112
IgE (g/L)	176.0 (46.2, 458.5)	97	76.3 (23.8, 372.0)	48	Z = -1.790	0.073

(Continued)

TABLE 3 | Continued

	Non-SIG (N = 98)		SIG (N = 49)		X ² value	p-value
	Summary	N	Summary	N		
C3 (g/L)	0.99 ± 0.21	97	0.85 ± 0.30	48	t = 2.947	0.004**
C4 (g/L)	0.24 (0.19, 0.30)	97	0.23 (0.17, 0.27)	48	Z = -0.854	0.393
PT (s)	10.4 (9.7, 11.1)	87	11.2 (10.2, 13.3)	48	Z = -3.151	0.002**
APTT (s)	31.00 (26.90, 35.70)	87	36.75 (28.15, 53.23)	48	Z = -2.882	0.004**
Fib (g/L)	5.97 ± 1.70	87	5.31 ± 2.02	48	t = 2.023	0.045*
D-dimer	1.26 (0.58, 2.31)	87	1.83 (0.69, 5.80)	48	Z = -1.836	0.066

*p < 0.05, **p < 0.01. Continuous parameters were expressed as ($\bar{X} \pm s$) or P50 (P25, P75), and discrete parameters were expressed as a percentage (%). SIG, severe infection group; MP, methylprednisolone; IS, immunosuppressive; WBC, white blood cells; ALC, absolute lymphocyte count; ANC, absolute neutrophil count; PLT, platelets count; Hb, hemoglobin; CRP, C-reactive protein; PCT, procalcitonin; ALT, alanine aminotransferase; AST, aspartate aminotransferase; ALP, alkaline phosphatase; Tch, total cholesterol; LDL, low-density lipoprotein; HDL, high-density lipoprotein; PT, prothrombin time; APTT, activated partial thromboplastin time; Fib, fibrinogen.

(SA) (three strains), and *Staphylococcus epidermidis* (three strains). On the contrary, the three most common types in the Non-SIG were *Haemophilus influenzae* (three strains), *Streptococcus pneumoniae* (SP) (three strains), and *Enterococcus faecium* (three strains). The detection rate of Gram-positive bacteria (GPB) was higher in the SIG than in the Non-SIG (Table 4). The pathogen profiles indicated that the SIG was more likely to be infected with GPB, respiratory syncytial virus (RSV) and influenza viruses (FLu), and fungi than the Non-SIG ($P < 0.05$). In total, 10 drug-resistant strains were detected in the two groups. The incidence of Methicillin-resistant strains was significantly higher in the SIG ($n = 4$) than in the Non-SIG ($n = 0$) ($P = 0.000$).

Risk Factor Analysis for Severe Infections in INS

To identify the risk factors of severe infections in children with INS, the aforementioned clinical parameters that were statistically different between the two groups were entered into the binary logistic regression analysis model. The results obtained using the “forward Wald” method were shown in Table 5. Binary logistic regression analysis showed that the combined use of immunosuppressants (OR: 26.969, 95% CI: 1.569–463.541), CRP ≥ 8 mg/L (OR: 6,468.029, 95% CI: 43.581–959,935.668), steroid resistance (OR: 100.191, 95% CI: 4.845–2,071.880), infection with gram-positive cocci (OR: 7,580.545, 95% CI: 27.126–2,118,452.938), infection with influenza virus (OR: 69.426, 95% CI: 2.494–1,932.221), and infection with respiratory syncytial virus (OR: 353.681, 95% CI: 5.011–24,963.819) were independent risk factors for severe infections in children with INS. ALC (increase $> 1.5 \times 10^9$ /L) (OR: 0.356, 95% CI: 0.188–0.675) and complement C3 (increase > 0.55 g/L) (OR: 0.000, 95% CI: 0.000–0.276) were protective factors.

Through the ROC curve model analysis, it was found that when children with nephropathy were co-infected, the risk of infection progression often needed to consider the combined effect of multiple influencing factors at the same time. The sensitivity and specificity reflected by the area under the ROC curve (AUC) showed that when infection occurred in children with INS, when one or more factors including steroid resistance,

IS treatment and increased CRP were combined, a more severe infection was very likely to occur (Figures 2A,B).

Analysis of Prognosis of INS Patients With Concomitant Severe Infections

In the SIG, 39 patients survived, five died, and five gave up treatment. Five patients who gave up treatment were excluded because of incomplete data and unclear prognosis. The causes of death included multiple organ failure syndromes (2 cases), brain herniation (1 case), and circulatory failure (2 cases). The patients were classified into the survival group ($N = 39$) and the mortality group ($N = 5$). The statistically significant parameters between two groups by univariate analysis entered into the binary logistic regression analysis model. There was no significant difference in baseline characteristics, treatment, and disease condition between the two groups. However, in the auxiliary examination, WBC, Serum chlorine, and ANC in the mortality group were significantly higher than those in the survival group, and ALT, AST, serum calcium, IgG, IgA, and C3 were significantly lower than those in the survival group (Table 6). Binary logistic regression analysis showed that WBC (increased $> 15 \times 10^9$ /L) (OR: 1.725, 95% CI: 1.046–2.844) is an independent risk factor for the poor prognosis of INS children with severe infections, often accompanied by an increase in the ANC ($> 10 \times 10^9$ /L), whereas serum calcium level (increase > 1.30 mmol/L) (OR: 0.000, 95% CI: 0.000–0.698) was a protective factor. The area under the ROC curve shows that serum calcium and WBC are highly specific and sensitive in predicting the risk of poor prognosis (Figures 2C,D).

DISCUSSION

Infection is one of the main complications of childhood idiopathic nephrotic syndrome, which can lead to frequent relapses of INS, treatment failures, and even death (14). Children with INS are more likely to have a poor prognosis after infection due to the primary disease and therapeutic drugs. At present, most studies on children's INS focus on the analysis of risk factors for infection, and there is a lack of large-scale reports on the risk factors and outcome factors

TABLE 4 | Pathogen spectrum and the analysis in the severe and non-severe infection group.

Pathogens	Non-severe infection group	Severe infection group	Total (N, %)	X ² value	p-value
Gram-negative bacteria	12	14	26 (56.52)	2.577	0.108
<i>Morganella</i>	1	2	3 (6.52)		
<i>Escherichia coli</i>	3	1	4 (8.70)		
<i>Acinetobacter baumannii</i>	1	2	3 (6.52)		
<i>Enterobacter cloacae</i>	0	1	1 (2.17)		
<i>Klebsiella pneumoniae</i>	0	2	2 (4.35)		
<i>Pseudomonas aeruginosa</i>	1	3	4 (8.70)		
<i>Haemophilus influenzae</i>	3	2	5 (10.87)		
<i>Haemophilus parainfluenzae</i>	2	0	2 (4.35)		
<i>Elizabethkingia</i>	0	1	1 (2.17)		
<i>Pantoea agglomerans</i>	1	0	1 (2.17)		
Gram-positive bacteria	7	13	20 (43.48)	10.256	0.001
<i>Staphylococcus aureus</i>	1	3	4 (8.70)		
<i>Staphylococcus epidermidis</i>	0	3	3 (6.52)		
<i>Staphylococcus hominis</i>	0	2	2 (4.35)		
<i>Staphylococcus haemolyticus</i>	0	1	1 (2.17)		
<i>Streptococcus pneumoniae</i>	3	2	5 (10.87)		
<i>Enterococcus faecium</i>	3	2	5 (10.87)		
Fungus	0	4	4	5.429	0.020
Virus	18	25	43		
Cytomegalovirus	8	5	13 (30.23)	0.011	0.918
Epstein-Barr virus	2	2	4 (9.30)	0.032	0.858
Adenovirus	1	0	1 (2.33)	0.000	1.000
Influenza virus	3	7	10 (23.26)	4.842	0.028
Parainfluenza virus	3	3	6 (13.95)	0.195	0.658
Respiratory syncytial virus	1	8	9 (20.93)	10.785	0.001
Mycoplasma pneumoniae	7	1	8	0.8100	0.368

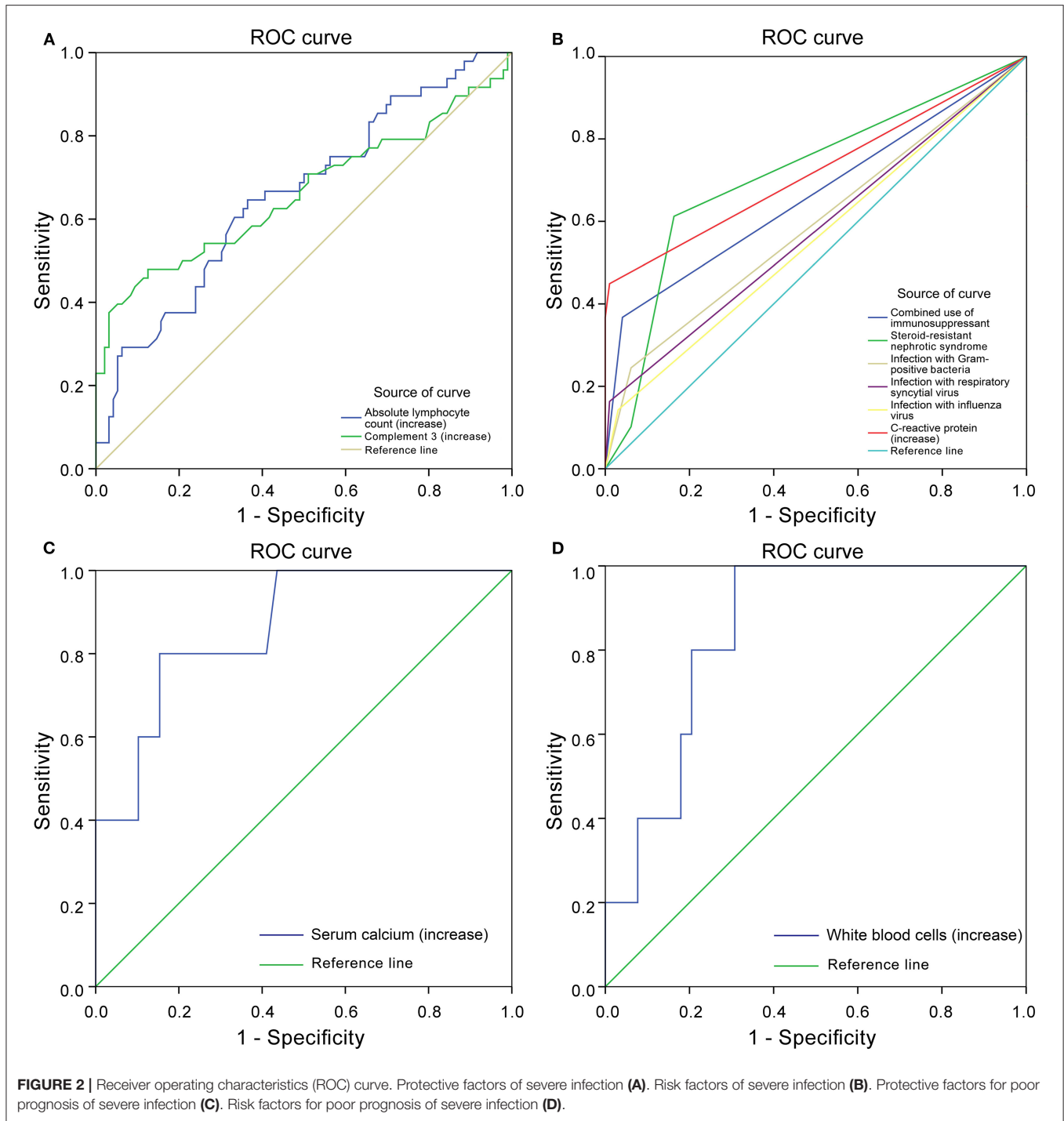
TABLE 5 | Binary logistic regression analysis of risk factors of severe infections in children with INS.

	Coefficient (B)	Wald value	p	OR	95% Confidence interval for EXP (B)	
					Lower limit	Upper limit
Steroid Combined with IS	3.295	5.155	0.023	26.969	1.569	463.541
SSNS		9.375	0.009			
SRNS	4.607	8.886	0.003	100.191	4.845	2,071.880
SDNS	1.979	1.208	0.272	7.233	0.212	246.345
Increased ALC	-1.033	10.025	0.002	0.356	0.188	0.675
CRP ≥ 8 mg/L	8.775	11.831	0.001	6,468.029	43.581	959,935.668
Increased C3	-8.205	5.405	0.020	0.000	0.000	0.276
Infection with gram-positive bacteria	8.933	9.662	0.002	7,580.545	27.126	2,118,452.938
Infection with influenza virus	4.240	6.243	0.012	69.426	2.494	1,932.221
Infection with RSV	5.868	7.301	0.007	353.681	5.011	24,963.819
Constant	3.318	1.269	0.260	27.612		

IS, Immunosuppressant; ALC, absolute lymphocyte count; RSV, respiratory syncytial virus.

for severe infection. Referring to the definition of severe infection in adult INS and the indicators of severe infection in children (7, 8), we defined the manifestations of severe infection in children with INS and analyzed the relevant risk factors.

In this study, it was observed that pneumonia and urinary tract infection were dominant in Non-severely infective INS children, while severe pneumonia, sepsis was dominant in severely infective INS children. In Taiwan (15), pneumonia is the main type of infection in children with INS, which is consistent



with the Non-SIG in our study, while in India, Saudi Arabia, and other regions (2, 16, 17), the upper respiratory tract infection is the main type, but these studies did not grade the infection. Although in Israel (18), the infections were mainly pneumonia and bacteremia/sepsis, but they defined the infection as a serious bacterial infection, which has limitations. From our research, it is found that both severe and Non-severe infections are mainly respiratory infections. Therefore, our treatment should be more

active when pneumonia is complicated. We found that the pathogen spectrum of the two groups is significantly different, and GPB are an independent risk factor for severe infections. In SIG, the respiratory pathogens are mainly SA, while Non-SIG is mainly composed of SP and Haemophilus influenzae, and it is more common for SIG strains to have drug resistance. Therefore, when patients are infected with methicillin-resistant SA or other methicillin-resistant GPB, they are more likely to

TABLE 6 | Univariate analysis of risk factors for poor prognosis of SIG in children with INS.

	Survival group (N = 39)		Mortality group (N = 5)		X ² value	p-value
	Summary	N	Summary	N		
WBC ($\times 10^9/L$)	12.75 (8.98, 15.99)	39	21.20 (15.78, 30.96)	5	Z = -2.496	0.013*
PLT ($\times 10^9/L$)	366 (298, 499)	39	155 (91, 461)	5	Z = -1.498	0.134
Hb (g/L)	126 (106, 145)	39	80 (68, 125)	5	Z = -1.998	0.046
ALC ($\times 10^9/L$)	2.36 (1.57, 3.43)	39	2.47 (1.38, 4.43)	5	Z = -0.296	0.767
ANC ($\times 10^9/L$)	9.27 (5.18, 11.39)	39	12.21 (10.84, 20.15)	5	Z = -2.034	0.042 *
CRP \geq 8 mg/L (n)	17 (43.6%)	39	4 (80.0%)	5		0.176 ^Δ
PCT (ng/ml)	0.43 (0.10, 8.65)	39	5.52 (0.62, 45.64)	5	Z = -1.423	0.155
Serum albumin (g/L)	17.06 (14.30, 23.80)	39	12.60 (10.20, 15.35)	5	Z = -1.029	0.303
ALT (U/L)	25.10 (15.10, 28.50)	39	13.40 (9.75, 67.75)	5	Z = -2.663	0.008**
AST (U/L)	31.20 (25.40, 46.50)	39	22.10 (18.65, 242.05)	5	Z = -2.422	0.015*
ALP (U/L)	102.60 (81.20, 137.50)	39	78.00 (63.05, 164.50)	5	Z = -1.091	0.275
Serum uric acid ($\mu\text{mol/L}$)	346 (224, 485)	39	360 (271, 449)	5	Z = -0.185	0.853
Serum urea nitrogen (mmol/L)	6.33 (3.70, 11.70)	39	8.20 (5.67, 28.08)	5	Z = -1.183	0.237
Serum creatinine ($\mu\text{mol/L}$)	40.60 (27.00, 74.50)	39	82.00 (37.00, 284.75)	5	Z = -1.738	0.082
Serum potassium (mmol/L)	4.11 \pm 0.68	39	3.61 \pm 1.04	5	t = 1.440	0.157
Serum sodium (mmol/L)	131.5 (129.2, 136.7)	39	132.4 (122.0, 141.0)	5	Z = -0.129	0.897
Serum chlorine (mmol/L)	101.9 (96.0, 104.1)	39	109.6 (101.1, 114.6)	5	Z = -2.238	0.025 *
Serum calcium (mmol/L)	1.91 (1.75, 2.09)	39	1.67 (1.29, 1.78)	5	Z = -2.626	0.009**
Tch (mmol/L)	9.24 \pm 3.62	39	8.36 \pm 2.69	5	t = 0.519	0.607
Triglyceride (mmol/L)	3.10 (2.38, 3.86)	39	3.73 (3.05, 10.27)	5	Z = -1.110	0.267
LDL (mmol/L)	5.89 \pm 3.30	39	5.05 \pm 3.10	5	t = 0.541	0.591
HDL (mmol/L)	1.53 (0.94, 2.04)	39	0.81 (0.56, 1.33)	5	Z = -1.923	0.054
IgG (g/L)	2.06 (0.96, 4.02)	39	0.66 (0.51, 0.86)	5	Z = -2.644	0.008**
IgA (g/L)	0.91 (0.66, 1.31)	39	0.48 (0.40, 0.62)	5	Z = -2.570	0.010*
IgM (g/L)	1.48 (1.08, 2.51)	39	1.74 (0.82, 1.85)	5	Z = -0.481	0.631
IgE (g/L)	81.30 (21.30, 410.00)	39	32.20 (27.66, 187.95)	5	Z = -0.795	0.427
C3 (g/L)	0.88 \pm 0.30	39	0.63 \pm 0.09	5	t = 3.940	0.001**
C4 (g/L)	0.22 (0.16, 0.27)	39	0.25 (0.23, 0.26)	5	Z = -0.981	0.326
PT (s)	11.05 (10.18, 12.83)	39	11.20 (10.00, 13.20)	5	Z = -0.114	0.909
APTT (s)	36.30 (26.78, 53.83)	39	37.50 (32.40, 44.20)	5	Z = -0.265	0.791
Fib (g/L)	5.56 \pm 1.97	39	5.22 \pm 1.99	5	t = 0.369	0.714
D-dimer	1.44 (0.55, 3.20)	39	3.10 (0.86, 32.25)	5	Z = -1.137	0.256

*p < 0.05, **p < 0.01. ^ΔFisher exact method. Continuous parameters were expressed as ($\bar{x} \pm s$) or P50 (P25, P75), and discrete parameters were expressed as a percentage (%). SIG, severe infection group; WBC, white blood cells; ALC, absolute lymphocyte count; ANC, absolute neutrophil count; Hb, hemoglobin; PLT, platelets count; CRP, C-reactive protein; PCT, procalcitonin; ALT, alanine aminotransferase; AST, aspartate aminotransferase; ALP, alkaline phosphatase; Tch, total cholesterol; LDL, low-density lipoprotein; HDL, high-density lipoprotein; PT, prothrombin time; APTT, activated partial thromboplastin time; Fib, fibrinogen.

cause serious infections. So, children with INS must vaccinate pneumococcal vaccine. Previous studies have confirmed that the use of high cumulative doses of steroids and IS agents (8, 17, 19–23) all increase the risk of INS infection. Besides, we found that children with SRNS or relapse are more susceptible to severe infection, and the risk of severe infection is higher when treated with steroids combined with immunosuppressive agents such as tacrolimus or mycophenolate mofetil. From the auxiliary inspection point of view, SIG has higher CRP and PCT, but their Tch and LDL are lower. The Tch and LDL of the two groups were higher than the normal range, but studies have shown that inflammation can cause a decrease

in Tch (24), so the LDL of SIG is lower than that of Non-SIG. When the Tch and LDL of infected children with INS decrease, we need to be vigilant. SIG's PT and APTT are also higher, suggesting that when there is a problem with the coagulation function of Non-SIG, we need to be alert to the progress of the infection, and even cause diffuse intravascular coagulation. C3 (<0.55 g/L) and ALC (<1.5 $\times 10^9/L$) are predictors of severe infections, which had not been previously reported. We believe that this is because the use of high-dose steroids and IS agents and INS itself will cause ALC and C3 to decrease. Co-infection will further reduce the ALC and C3 (25–27). Therefore, When C3 \leq 0.55 g/L or ALC \leq 1.5 \times

$10^9/L$, the infection should be timely and controlled to avoid further aggravation.

Regarding prognosis, we found that children in the mortality group had lower immunity. The serum calcium of the mortality group was significantly reduced, which is one of the factors of poor prognosis. In INS, hypoalbuminemia is often accompanied by a decrease in serum calcium. The cause of hypocalcemia may not only be caused by INS itself, but also infection. Serum calcium lower than 1.30 mmol/L may cause death. WBC ($>15 \times 10^9/L$) was the only independent risk factor for poor prognosis, no similar results have been reported in children with INS, whereas reports involving adults with INS have shown that hypotension and decreased platelet count were risk factors for a poor prognosis (14). Although decreased ALC is a risk factor for severe infection, however, due to an increase in ANC, the resulting increase in white blood cells became an early warning indicator of fatal severe infection, especially the increase in WBC increased ($>15 \times 10^9/L$).

Several limitations of this study should be mentioned. First, although we have found some risk factors of severe infection in children with INS, as a retrospective study, it might lead to the bias in data collection and uniform availability of information from the medical records. Second, the age span of children in this study was large, and the results could not well-reflect the clinical characteristics of children with INS complicated with severe infection in each age period. We tried to divide the children into infant, childhood and adolescence group based on tanner staging. However, due to the relatively small sample size, it was hard to perform statistical analysis. In the future, we will expand the sample size and design a prospective study based on the results of this study, so as to avoid poor prognosis of children with INS caused by severe infection, and to find more risk factors of severe infection in children with INS in different age period.

In summary, our double-center retrospective study showed that resistance to steroids, combined use of steroids and IS agents, and GPB infections (especially SA) are high risk factors for severe infection. We should monitor $CRP \geq 8 \text{ mg/L}$, $C3 \leq 0.55 \text{ g/L}$ and $ALC \leq 1.5 \times 10^9/L$ to avoid developing severe infection.

REFERENCES

- Noone DG, Iijima K, Parekh R. Idiopathic nephrotic syndrome in children. *Lancet*. (2018) 392:61–74. doi: 10.1016/S0140-6736(18)30536-1
- Ajayan P, Krishnamurthy S, Biswal N, Mandal J. Clinical spectrum and predictive risk factors of major infections in hospitalized children with nephrotic syndrome. *Indian Pediatr*. (2013) 50:779–81. doi: 10.1007/s13312-013-0214-x
- Gulati A, Sinha A, Sreenivas V, Math A, Hari P, Bagga A. Daily corticosteroids reduce infection-associated relapses in frequently relapsing nephrotic syndrome: a randomized controlled trial. *Clin J Am Soc Nephrol*. (2011) 6:63–9. doi: 10.2215/CJN.01850310
- International Study of Kidney Disease in Children. Nephrotic syndrome in children: prediction of histopathology from clinical and laboratory characteristics at time of diagnosis. A report of the International

The WBC of severely infected patients increases significantly, especially when ANC increases, which can lead to fatal infections.

DATA AVAILABILITY STATEMENT

The raw data supporting the conclusions of this article will be made available by the authors, without undue reservation.

ETHICS STATEMENT

The studies involving human participants were reviewed and approved by Ethics Committee of the Children's Hospital of Chongqing Medical University (reference number 2020-12, 2020-03-24). Written informed consent to participate in this study was provided by the participants' legal guardian/next of kin.

AUTHOR CONTRIBUTIONS

MW and XZ designed this study. HZ and SQ wrote the draft. CZ, LS, and TZ has participated in data collection and case follow-up. JL designed the statistical analysis of the study. All authors contributed to the article and approved the submitted version.

FUNDING

This study was funded by the central government directs special funds for local science and technology development, Social Development Project of Guizhou Provincial Department of Science and Technology (2020-4Y124).

ACKNOWLEDGMENTS

First, we would like to thank Western Pediatric Development Union of China for setting up a platform for academic exchange. Besides, we would thank all of the medical staff at the department of nephrology, Children's Hospital of Chongqing Medical University, and the department of pediatrics, the Affiliated Hospital of Guizhou Medical University for their support in this research. At last, we would like to thank Haiping Yang, Gaofu Zhang, Qin Yang, Daoqi Wu for their help in data collection.

Study of Kidney Disease in Children. *Kidney Int*. (1978) 13:159–65. doi: 10.1038/ki.1978.23

- Giangiacomo J, Cleary TG, Cole BR, Hoffsten P, Robson AM. Serum immunoglobulins in the nephrotic syndrome. A possible cause of minimal-change nephrotic syndrome. *New Engl J Med*. (1975) 293:8–12. doi: 10.1056/NEJM197507032930103
- Kidney Disease: Improving Global Outcomes (KDIGO) Glomerulonephritis Work Group. KDIGO clinical practice guideline for glomerulonephritis. *Kidney Int*. (2012) 2(Suppl.):139–274. doi: 10.1038/kisup.2012.9
- Lebo CH, Jianhua DO, Shutian XU. Clinical characteristics and risk factors of severe infections in hospitalized adult patients with primary nephrotic syndrome. *Chin J Nephrol Dial Transplant*. (2018) 1:18–23. doi: 10.3969/cndt.j.issn.1006-298X.2018.01.004
- Li J, Zhang Q, Su B. Clinical characteristics and risk factors of severe infections in hospitalized adult patients with idiopathic nephrotic syndrome. *J Int Med Res*. (2017) 45:2139–45. doi: 10.1177/0300060517715339

9. UNICEF, WHO. *Pneumonia: The Forgotten Killer of Children*. New York, NY: United Nations Children's Fund (2006).
10. Bradley JS, Byington CL, Shah SS, Alverson B, Carter ER, Harrison C, et al. Executive summary: the management of community-acquired pneumonia in infants and children older than 3 months of age: clinical practice guidelines by the Pediatric Infectious Diseases Society and the Infectious Diseases Society of America. *Clin Infect Dis*. (2011) 53:617–30. doi: 10.1093/cid/cir625
11. Pediatric Acute Lung Injury Consensus Conference Group. Pediatric acute respiratory distress syndrome: consensus recommendations from the Pediatric Acute Lung Injury Consensus Conference. *Pediatr Crit Care Med*. (2015) 16:428–39. doi: 10.1097/PCC.0000000000000350
12. Cameron JC, Allan G, Johnston F, Finn A, Heath PT, Booy R. Severe complications of chickenpox in hospitalised children in the UK and Ireland. *Arch Dis Childhood*. (2007) 92:1062–6. doi: 10.1136/adc.2007.123232
13. Dellinger RP, Levy MM, Rhodes A, Annane D, Gerlach H, Opal SM. Surviving Sepsis Campaign: international guidelines for management of severe sepsis and septic shock. *Intens Care Med*. (2012) 39:165–228. doi: 10.1007/s00134-012-2769-8
14. Latta K, von Schnakenburg C, Ehrlich JH. A meta-analysis of cytotoxic treatment for frequently relapsing nephrotic syndrome in children. *Pediatr Nephrol*. (2001) 16:271–82. doi: 10.1007/s004670000523
15. Wei CC, Yu IW, Lin HW, Tsai AC. Occurrence of infection among children with nephrotic syndrome during hospitalizations. *Nephrology*. (2012) 17:681–8. doi: 10.1111/j.1440-1797.2012.01650.x
16. Narain U, Gupta A. Urinary tract infection in children with nephrotic syndrome. *Pediatr Infect Dis J*. (2018) 37:144–6. doi: 10.1097/INF.0000000000001747
17. Alfakeekh K, Azar M, Sowailmi BA, Alsulaiman S, Makdob SA, Omair A, et al. Immunosuppressive burden and risk factors of infection in primary childhood nephrotic syndrome. *J Infect Public Health*. (2019) 12:90–4. doi: 10.1016/j.jiph.2018.09.006
18. Lebel A, Kropach N, Ashkenazi-Hoffnung L, Huber-Yaron A, Davidovits M. Infections in children with nephrotic syndrome: twenty years of experience. *Clin Pediatr*. (2020) 59:692–8. doi: 10.1177/0009922820908583
19. Abeyagunawardena A, Brogan PA, Trompeter RS, Dillon MJ. Immunosuppressive therapy of childhood idiopathic nephrotic syndrome. *Exp Opin Pharmacother*. (2002) 3:513–9. doi: 10.1517/14656566.3.5.513
20. Youssef J, Novosad SA, Winthrop KL. Infection risk and safety of corticosteroid use. *Rheumat Dis Clin N Am*. (2016) 42:157. doi: 10.1016/j.rdc.2015.08.004
21. Lionakis MS, Kontoyiannis DP. Glucocorticoids and invasive fungal infections. *Lancet*. (2003) 362:1828–38. doi: 10.1016/S0140-6736(03)14904-5
22. Orlicka K, Barnes E, Culver EL. Prevention of infection caused by immunosuppressive drugs in gastroenterology. *Ther Adv Chronic Dis*. (2013) 4:167–85. doi: 10.1177/2040622313485275
23. Alwadhji RK, Mathew JL, Rath B. Clinical profile of children with nephrotic syndrome not on glucocorticoid therapy, but presenting with infection. *J Paediatr Child Health*. (2004) 40:28–32. doi: 10.1111/j.1440-1754.2004.00285.x
24. Liu Y, Coresh J, Eustace JA, Longenecker JC, Jaar B, Fink NE, et al. Association between cholesterol level and mortality in dialysis patients: role of inflammation and malnutrition. *JAMA*. (2004) 291:451–9. doi: 10.1001/jama.291.4.451
25. Li W, Li H, Song W, Hu Y, Liu Y, Da R, et al. Differential diagnosis of systemic lupus erythematosus and rheumatoid arthritis with complements C3 and C4 and C-reactive protein. *Exp Ther Med*. (2013) 6:1271–6. doi: 10.3892/etm.2013.1304
26. Wesche DE, Lomas-Neira JL, Perl M, Chung CS, Ayala A. Leukocyte apoptosis and its significance in sepsis and shock. *J Leukoc Biol*. (2005) 78:325–37. doi: 10.1189/jlb.0105017
27. Felmet KA, Hall MW, Clark RS, Jaffe R, Carcillo JA. Prolonged lymphopenia, lymphoid depletion, and hypoprolactinemia in children with nosocomial sepsis and multiple organ failure. *J Immunol*. (2005) 174:3765–72. doi: 10.4049/jimmunol.174.6.3765

Conflict of Interest: The authors declare that the research was conducted in the absence of any commercial or financial relationships that could be construed as a potential conflict of interest.

Copyright © 2021 Zhang, Qiu, Zhong, Shi, Li, Zhang, Zhu and Wang. This is an open-access article distributed under the terms of the Creative Commons Attribution License (CC BY). The use, distribution or reproduction in other forums is permitted, provided the original author(s) and the copyright owner(s) are credited and that the original publication in this journal is cited, in accordance with accepted academic practice. No use, distribution or reproduction is permitted which does not comply with these terms.