



OPEN ACCESS

EDITED BY

Arnab Pal,
Post Graduate Institute of Medical Education
and Research (PGIMER), India

REVIEWED BY

Sven E. Niklander,
Universidad Andres Bello, Chile
Samapika Routray,
All India Institute of Medical Sciences
Bhubaneswar, India
Shipra Gupta,
Post Graduate Institute of Medical Education
and Research (PGIMER), India

*CORRESPONDENCE

Adriana Franco Paes Leme
✉ adriana.paesleme@Inbio.cnpem.br

SPECIALTY SECTION

This article was submitted to Oral Cancers, a
section of the journal Frontiers in Oral Health

RECEIVED 02 November 2022

ACCEPTED 16 January 2023

PUBLISHED 27 February 2023

CITATION

Normando AGC, dos Santos ES, Sá JO, Busso-
Lopes AF, De Rossi T, Patroni FMS, Granato DC,
Guerra ENS, Santos-Silva AR, Lopes MA and
Paes Leme AF (2023) A meta-analysis reveals
the protein profile associated with malignant
transformation of oral leukoplakia.
Front. Oral. Health 4:1088022.
doi: 10.3389/froh.2023.1088022

COPYRIGHT

© 2023 Normando, dos Santos, Sá, Busso-
Lopes, De Rossi, Patroni, Granato, Guerra,
Santos-Silva, Lopes and Paes Leme. This is an
open-access article distributed under the terms
of the [Creative Commons Attribution License
\(CC BY\)](https://creativecommons.org/licenses/by/4.0/). The use, distribution or reproduction in
other forums is permitted, provided the original
author(s) and the copyright owner(s) are
credited and that the original publication in this
journal is cited, in accordance with accepted
academic practice. No use, distribution or
reproduction is permitted which does not
comply with these terms.

A meta-analysis reveals the protein profile associated with malignant transformation of oral leukoplakia

Ana Gabriela Costa Normando^{1,2}, Erison Santana dos Santos¹,
Jamile de Oliveira Sá², Ariane Fidelis Busso-Lopes², Tatiane De Rossi²,
Fábio Malta de Sá Patroni³, Daniela Campos Granato²,
Eliete Neves Silva Guerra⁴, Alan Roger Santos-Silva¹,
Márcio Ajudarte Lopes¹ and Adriana Franco Paes Leme^{2*}

¹Oral Diagnosis Department, Piracicaba Dental School, University of Campinas, Piracicaba, Brazil, ²Brazilian Biosciences National Laboratory, Brazilian Center for Research in Energy and Materials, Campinas, Brazil, ³Molecular Biology and Genetic Engineering Center, University of Campinas, Campinas, Brazil, ⁴Laboratory of Oral Histopathology, Health Sciences Faculty, University of Brasília, Brasília, Brazil

The search for biomarkers associated with oral leukoplakia malignant transformation is critical for early diagnosis and improved prognosis of oral cancer patients. This systematic review and meta-analysis aimed to assess protein-based markers potentially associated with malignant transformation of oral leukoplakia. Five database and the grey literature were searched. In total, 142 studies were included for qualitative synthesis, where 173 proteins were investigated due to their potential role in malignant progression from oral leukoplakia (OL) to oral squamous cell carcinoma (OSCC). The abundance of these proteins was analyzed in fixed tissues and/or biofluid samples, mainly by immunohistochemistry and ELISA, and 12 were shared by both samples. Enrichment analysis revealed that the differential abundant proteins are mostly involved with regulation of cell death, regulation of cell proliferation, and regulation of apoptotic process. Also, these proteins are mainly expressed in the extracellular region (55.5%), cell surface (24.8%), and vesicles (49.1%). The meta-analysis revealed that the proteins related to tumor progression, PD-L1, Mdm2, and Mucin-4 were significantly associated with greater abundance in OSCC patients, with an Odds Ratio (OR) of 0.12 (95% CI: 0.04–0.40), 0.44 (95% CI: 0.24–0.81), and 0.18 (95% CI: 0.04–0.86), respectively, with a moderate certainty of evidence. The results indicate a set of proteins that have been investigated across OSCC initiation and progression, and whose transcriptional expression is associated with clinical characteristics relevant to the prognosis and aggressiveness. Further verification and validation of this biomarkers set are strongly recommended for future clinical application.

KEYWORDS

oral cancer, oral leukoplakia, malignant transformation, proteins, systematic review, meta-analysis

1. Introduction

Oral cancer is among the most prevalent cancers worldwide, with over 377,000 new cases occurring in 2020 and more than 177,000 deaths in the same year (1). Despite the large number of cases, it is still a disease frequently diagnosed in advanced stages (2). Late presentation, aggressive local invasion, and metastasis usually result in high relapse rates, contributing to the static 5-year survival rate of 50% around the world (3). Oral squamous cell carcinoma (OSCC) may arise from mucosal disorders collectively grouped as oral potentially malignant disorders (OPMD), which present different rates of malignant transformation.

Oral leukoplakia (OL) is one of the most prevalent and most studied OPMD observed in clinical practice, with an estimated pooled global prevalence of 4.11% (4, 5). OL is defined as a predominantly white plaque of questionable risk having excluded other known lesions (4). The main etiological factors of OL include tobacco and alcohol, although betel quid/areca nut chewing habits also represent an important risk factor especially in South Asian populations (5). Human papillomavirus (HPV) may also play a role in dysplastic leukoplakias (6). Approximately 9.5% of OL lesions evolve into cancer, with an annual transformation rate of 1.56% (7). The significant malignant transformation imposes close follow up measures and appropriate management strategies.

Predicting the risk of malignant transformation remains a significant clinical challenge and it is of ultimate importance since early diagnosis may prevent oral cancer rise (8). Currently, early diagnosis and risk screening may be accomplished by an oral biopsy followed by histopathological analysis. Epithelial dysplasia is the main indicator of malignant transformation risk of OL and increasing grades of dysplasia indicates higher risk of progression to carcinoma (9). However, the histological grading of oral epithelial dysplasia is considered subjective, with both intra and inter-examiner variations, raising the concern of reproducibility (9). Also, the decision of following or surgically treating an OPMD is challenging and, even after surgical excision, recurrence or malignant transformation may occur (10). Thus, more precise methods for assessment of malignant potential of a given disorder are imperative and could assist in the early diagnosis of OSCC (11).

Molecular biomarkers approach emerges as a useful way of identifying and characterizing alterations indicative of malignant transformation that would be valuable for clinicians to precociously intervene and prevent OSCC emergence. Proteins are the biomolecules that directly execute most biological processes, suggesting they are valuable predictors of disease progression (12, 13). Different studies have suggested the potential of proteomics to reveal prognostic biomarkers of OSCC in tissue and biofluids such as serum and saliva (14–16). Therefore, the search for proteins is not only necessary but also may reveal new targets to objectively and precisely determine the OPMD risk of malignant transformation.

In this context, this systematic review aimed to determine the protein profile potentially associated with malignant transformation of OL, and that could indicate susceptibility to disease progression. Previous reviews have already assessed general prognostic biomarkers in OPMDs, in oral dysplasia, and in tissues of OL (8, 10, 17). However, no systematic reviews have assessed with a meta-analytical approach the protein expression associated with malignant transformation risk in oral leukoplakia lesions that could assist in future studies.

2. Methods

2.1. Eligibility criteria

The focused research question and the inclusion criteria were based on the acronym PECOS (Population, Exposure, Comparison, Outcomes, Studies) of which: (P) patients diagnosed with oral leukoplakia; (E) presence of proteins that indicate or suggest

malignant transformation; (C) patients with oral cancer; (O) association of protein expression and malignant transformation of OL into oral cancer; (S) observational studies (cross-sectional, cohort, or case-control) and clinical trials.

Studies presenting any of the following criteria were excluded: (1) studies assessing biomarkers after any intervention; (2) studies with no comparison group; (3) studies with no individualized data for oral leukoplakia; (4) studies which do not specify the potentially malignant disorder; (5) studies assessing virus as biomarkers (HPV, HIV, EBV, HSV); (6) studies assessing hairy leukoplakia; (7) studies evaluating non-oral leukoplakia; (8) studies that do not assess possible progression/transformation; (9) reviews, letters to the editor, conference abstracts, personal opinions, book chapter, *in vitro* or *in vivo* animal studies, and case reports; (10) full text copy not available; (11) language restriction [studies not published in Latin (Roman) alphabet]; (12) studies containing data already reported in other studies; (13) No protein profile assessment.

2.2. Information sources and search strategies

Individualized search strategies were performed for each of the following databases: EMBASE, LILACS, PubMed, Scopus, and Web of Science (**Supplementary Appendix S1**). A further search of the grey literature was carried out on Google Scholar and ProQuest. In addition, the references of studies included in the systematic review were manually reviewed for potential additional papers. Searches in all databases were carried out on September 4th, 2021. The studies retrieved from different databases were imported into a reference manager software (Endnote Web, Clarivate Analytics, Philadelphia, PA), in which duplicated references were automatically removed. No limits in terms of publication date were applied to the search strategy.

2.3. Selection process

The study selection was performed in two phases. In the first phase, two reviewers (AGCN and ESS) independently read the titles and abstracts of retrieved studies and applied the eligibility criteria. The first phase was performed on Rayyan® software (18). The remaining duplicates were manually removed, and afterwards all references were read. Those studies that seemed to accomplish all inclusion criteria were moved forward to the second phase where full texts were read, and the selection criteria were applied to confirm whether the studies fulfilled all eligibility criteria. The same two reviewers were independently involved in phase 2. References of all included studies were assessed for possible missing studies that could be included. Disagreements in either phase were resolved by discussion and mutual agreement between the reviewers.

2.4. Data collection process and data items

The most relevant data from included studies were collected by one reviewer (AGCN) and crosschecked by a second reviewer (ESS). Any disagreements were also resolved by discussion and

mutual agreement among the authors. The experts were involved if required for a final decision. Extracted data included: first author, year and country of publication, study design, sample size, gender, specimens and method of assessment, protein names, main results, and conclusions. If relevant data were not reported or incomplete, attempts were made to contact the corresponding authors by e-mail to retrieve the missing information.

2.5. Risk of bias assessment

The risk of bias of individual studies was independently assessed by two calibrated reviewers (AGCN and ESS) using the Joanna Briggs Institute (JBI) Critical Appraisal Tools for Cohort and for Analytical Cross-sectional studies (19). Briefly, methodological quality of cohort and cross-sectional studies was assessed by 11 and 8 questions, respectively, to address the possibility of bias in its design, conduct, and analysis. Risk of bias score was calculated dividing the frequency of “yes” answers above the total number of questions. Studies were characterized as having a high risk of bias when it reached up to 49% score “yes”, as moderate when the study reached 50% to 69% score “yes”; and as a low risk of bias when the study reached more than 70% score “yes”.

2.6. Effect measures

The main outcome was the association between the abundance of a given protein biomarker and the potential of malignant transformation of OL. Malignancy potential was considered when there was a difference in protein expression between two or more groups ($p < 0.05$). Secondary outcomes were given by the scores of relative abundance among the groups, IHC staining intensity values, or concentration of a given protein and their differences among the comparison groups (OSCC vs. OL). The effect measure considered was the odds ratio (OR) which was calculated based on the total number of included patients in each group (OSCC and OL) and the number of patients expressing positivity for a particular protein.

2.7. Synthesis methods

A qualitative analysis was performed grouping the proteins by type of sample, tissue or biofluids, and by comparing data reported in included studies regarding primary and secondary outcomes. The association meta-analyses were performed following the appropriate Cochrane Guidelines (20). Review Manager 5.4 software (RevMan 5.4, The Nordic Cochrane Centre, Copenhagen, Denmark) was used to perform the association meta-analysis, with the OR and 95% confidence intervals (CI) determined at a significance level of 5%. Statistical heterogeneity was calculated using an inconsistency index (I^2), and a random effect model was used among all analysis.

2.8. Certainty assessment

The certainty of the cumulative evidence was assessed by the Grading of Recommendation, Assessment, Development, and Evaluation (GRADE) instrument (21). The assessment was applied to the different outcomes evaluated in the present review and it was based on study design, risk of bias, inconsistency, indirectness, imprecision, and other considerations. The certainty of evidence was scored as high, moderate, low, or very low. A GRADE evidence profile was performed using the online software GRADEpro (22).

2.9. Functional enrichment analysis of assessed proteins

Functional enrichment analysis for Gene Ontology (GO) terms (biological processes, molecular functions, and cellular components) was conducted through the PANTHER Classification System (<http://pantherdb.org/>) considering the GO Ontology database (<http://geneontology.org/>; DOI: 10.5281/zenodo.5228828 Released 2021-08-18), and binomial test with Bonferroni correction for multiple testing. The retrieved data were further plotted on GraphPad Prism version 9.2.0 (GraphPad; <https://www.graphpad.com>).

2.10. Association of protein-based markers with OSCC clinical characteristics using public database

Association of gene expression levels of all assessed proteins with OSCC clinical characteristics was performed using The Cancer Genome Atlas (TCGA). Firstly, transcript levels were retrieved from the public repository TCGA available in the Genomic Data Commons Data Portal (GDC) (<https://portal.gdc.cancer.gov>) for OSCC. The association with clinical and pathological features was performed using gene expression information from primary tumors and clinical data retrieved from OSCC patients in TCGA repository, totaling 398 individuals included from the following oral areas: (i) alveolar ridge, (ii) base of tongue, (iii) buccal mucosa, (iv) floor of mouth, (v) hard palate, (vi) oral cavity, (v) oral tongue, (vi) oropharynx, and (vii) tonsil. The selected targets were evaluated according to different clinical categories, as follows: (i) recurrence, (ii) death status, (iii) lymph and vascular invasion, (iv) margin status, (v) tumor histological grade, (vi) lymph node status, (vii) pathologic stage, (viii) tumor size, (ix) perineural invasion, (x) extracapsular nodal spread, (xi) alcohol and tobacco history, (xii) HPV status, and (xiii) primary therapy outcome. For unbiased group assignment, we used mclust package (23) under R environment. Data were tested for normality and homogeneity of variance using Shapiro-Wilk test ($p\text{-value} \leq 0.05$) to drive decisions of parametric or non-parametric tests for group comparison with the clinical categories (24).

2.11. Analysis of driver genes

HNSCC-driver mutated genes were retrieved from the Integrative OncoGenomics (IntOGen) pipeline (25). The

author compiled significant mutations reported for 4 cohorts of HNSCC: TCGA (502 HNSCC primary tumors), cBioPortal (70 HNSCC primary tumors), Hartwig Medical Foundation (63 HNSCC metastasis), and Pan-Cancer Analysis of Whole Genomes (PCAWG) (56 HNSCC primary tumors). Sixty-two driver mutations were reported for HNSCC and manually compared with our list of identified proteins in the included studies of the present systematic review.

3. Results

3.1. Study selection

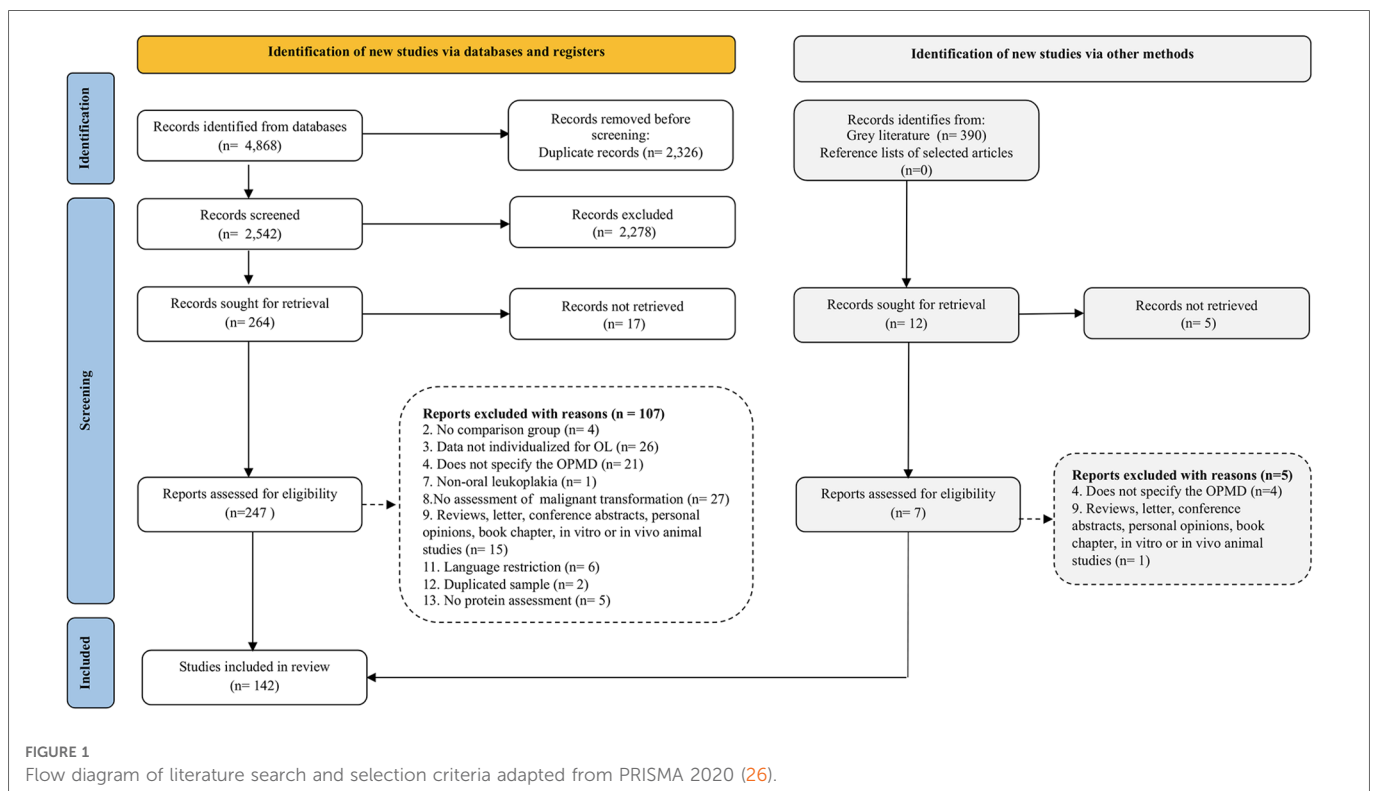
By performing database searches, 4,868 records were identified. After removing the duplicates, 2,542 references remained and had their titles and abstracts screened. In total, 264 references met the eligibility criteria and were retrieved for detailed evaluation. Also, 12 additional studies retrieved from grey literature were included, totalizing 276 articles that were considered for full-text assessment. The eligibility criteria were confirmed, and 112 articles were excluded, in addition to other 22 studies that could not be retrieved as full-text copy was not available (Supplementary Appendix S2). Lastly, 142 studies were included for qualitative synthesis and had their data extracted. The study selection process is described in the flow diagram (Figure 1) and the reference list of the included studies is presented in Supplementary Appendix S3.

3.2. Study characteristics

Most of the included papers were cross-sectional studies ($n = 130$; 91.5%) while the remaining were retrospective cohorts ($n = 12$; 8.5%). Most studies were conducted in Asia, especially India and China (42.3% and 19.4%, respectively), followed by Europe. All the studies were published in the English language between 1993 and 2021, with the majority having been published in the last decade ($n = 106$; 75%). The total sample comprised 15,248 patients, of which 6,984 patients with OSCC, 5,767 OL patients, and 2,497 healthy controls. Of the total studies, 135 studies confirmed the OL diagnosis by histopathological analysis, two performed clinical diagnosis according to predetermined diagnostic and staging criteria (27), and five did not clearly report how the diagnosis was performed.

Among OSCC patients, 43.4% were male and 20.4% were female, whilst the remaining patients had no gender reported by these studies. Similarly, most OL patients were male (35.2%) and 18.7% were represented by female patients, although most OL patients have not had their gender data reported. Some studies (28/142) assessed the expression of specific proteins in OL compared only to OSCC, whereas most of the included studies (116/142) compared OL, OSCC, and healthy individuals, which allows for a more accurate assessment of protein abundance according to the progression of the disease.

Among the included studies, there were 173 distinct assessed proteins which were analyzed from both formalin-fixed paraffin embedded (FFPE) tissues and biofluid samples (saliva and serum). The most frequently used technique to assess protein expression was immunohistochemistry (84.7%), followed by ELISA (11.1%), Western Blotting (2.8%), and Mass Spectrometry (2.1%). Supplementary



Appendix S4 presents the qualitative synthesis of the expression profile of all proteins in the process of malignancy from control normal epithelium (C) evolving to OL without dysplasia, to dysplastic OL, culminating in OSCC. Some proteins showed progressive overexpression according to disease progression (C < OL < OSCC), other proteins were downregulated according to the course of the disease (C > OL > OSCC), and other proteins had contrasting results between studies. The detailed qualitative synthesis of the included studies assessing proteins in FFPE tissues is presented in **Supplementary Appendix S5** and of the studies assessing proteins in biofluids is shown in **Supplementary Appendix S6**.

3.3. Risk of bias in the studies

Among the cross-sectional studies, 27 studies were assessed as low risk of bias, 57 presented moderate risk of bias, whereas 46 studies were scored as having a high risk of bias. Most studies described the sample subjects in detail, measured the proteins in a valid and reliable way, and used objective, standard criteria for measurement of the conditions. On the other hand, most of cross-sectional studies failed in clearly defining the sample inclusion criteria, did not

identify confounding factors nor stated strategies to deal with them, and did not measure the OL and OSCC conditions in a reliable way.

Regarding retrospective cohorts, four of them were rated as moderate risk of bias and the other 8 were graded as low risk of bias. Most studies successfully measured the conditions to assign people for the groups (Control, OL, and OSCC), assured that the participants had not undergone malignant transformation at the start of the study, and performed a complete follow-up. Conversely, most cohorts did not state the strategies to deal with confounding factors and did not measure the outcomes in a reliable way. Assessment of risk of bias in cohort and cross-sectional studies are summarized in **Figure 2** and detailed in **Supplementary Appendix S7**.

3.4. Results of individual studies

3.4.1. Markers of tumor progression, cell proliferation, immune and cell death regulation are among the most frequently assessed proteins

Most of the analyzed proteins ($n = 116$; 67%) were described in only one of the included studies. The proteins that were most



frequently investigated were p53 and Ki-67, in 15 and 10 studies respectively (Figure 3A). Among tumor suppressors, p53, p16, and pRb were the most frequently assessed. The expression of protein p53 progressively increased from normal mucosa to OL and OSCC, suggesting that OL patients overexpressing p53 may have a higher risk of developing OSCC than those not expressing p53 (37, 47–51). On the other hand, p16 demonstrated linear decreased expression towards malignancy (47, 52, 53). Regarding pRb, which

is also a tumor suppressor protein, some studies reported that most of the lesions stained positively (47, 49), whilst a reduction of pRb expression could be observed in transition from hyperplasia to dysplasia ($p = 0.005$) and from OL to OSCC (OR = 2.938, 95% CI: 1.568–5.504; $p = 0.001$) (52, 53).

Markers of cell proliferation (Ki-67, Survivin, and Keratin 14) were also frequently investigated as potential markers of malignant transformation. The expression of Ki-67 progressively increased

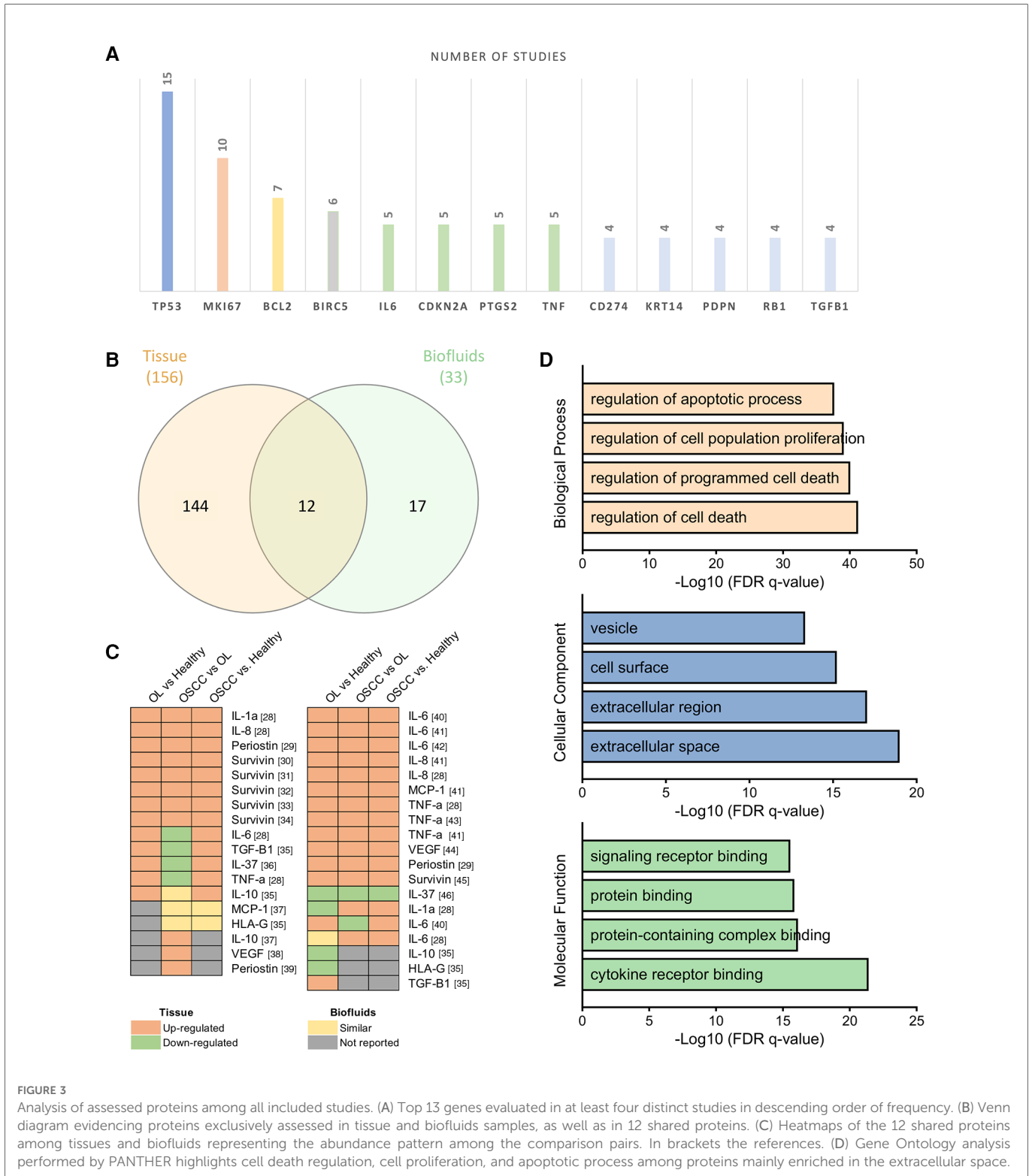


FIGURE 3 Analysis of assessed proteins among all included studies. (A) Top 13 genes evaluated in at least four distinct studies in descending order of frequency. (B) Venn diagram evidencing proteins exclusively assessed in tissue and biofluids samples, as well as in 12 shared proteins. (C) Heatmaps of the 12 shared proteins among tissues and biofluids representing the abundance pattern among the comparison pairs. In brackets the references. (D) Gene Ontology analysis performed by PANTHER highlights cell death regulation, cell proliferation, and apoptotic process among proteins mainly enriched in the extracellular space.

from hyperplasia to dysplasia and OSCC, and in OSCC increased according to loss of differentiation (36, 47, 49, 54–56). The proteins survivin and Keratin 14 also seemed statistically different among OSCC, OL, and normal mucosa, usually overexpressed in OSCC ($p < 0.01$) (28, 41, 42, 56–58).

Immune system regulators (PD-L1, COX-2, and IL-6), have also been constantly analyzed in the process of initiation and progression of OSCC. Regarding PD-L1, IHC density was significantly stronger in both OSCC, and OL compared with normal control ($p < 0.0001$) (59). Also, whether compared to healthy controls, transformed OL presented a 60-fold PD-L1 overexpression ($p = 0.04$) that was related to malignant transformation ($p = 0.03$) (60). Similarly, a significant increase in COX-2 expression could be observed from normal epithelium through OL to OSCC ($p < 0.001$) in tissue samples (61–64). The expression of IL-6, on the other hand, was mainly assessed in biofluids, revealing that salivary concentration of IL-6 was higher in OSCC patients than in controls and in non-dysplastic OL ($p = 0.0012$) (45, 65, 66).

Finally, cell death regulators (Bcl-2 and TNF- α), growth and differentiation regulator (TGF- β 1), and cell migration and adhesion marker (Podoplanin) were also repeatedly evaluated, in at least four studies. A detailed characterization of each assessed protein is presented in [Supplementary Appendix S8](#).

3.4.2. Biofluids and tissue samples share potential markers related to immune regulation, cell proliferation, and tumor progression

Among the 142 included studies, 124 evaluated protein abundance in formalin-fixed paraffin-embedded tissues whereas 21 evaluated protein expression in biofluid samples, including 9 from serum, 11 from saliva, and 2 from both. Some studies evaluated the same proteins both in tissue and biofluid samples (45, 67, 68).

The profile 144 proteins were exclusively assessed on tissue samples, and 17 proteins were exclusive from biofluids samples (serum and saliva), whereas 12 proteins were evaluated in both tissue and biofluid samples ([Figure 3B](#)). Shared proteins were cytokines involved in immune system regulation (IL-1A, IL-6, IL-8, IL-10, IL-37, MCP-1, and TNF- α), defense/immunity proteins (HLA-G), growth factors (VEGF-A and TGF- β 1), as well as cell adhesion molecules (Periostin), and cell proliferation promoters (Survivin).

Interestingly, IL-1A, IL-8, TNF- α , VEGF-A, Periostin, and Survivin presented similar abundance pattern by comparing the IHC analysis and the biofluids assessment. In contrast, IL-37 tissue abundance was higher in OL and OSCC than in normal tissue ($p < 0.001$), but serum concentration was decreased in OSCC patients than in OL and controls ($p < 0.0001$) (69, 70). On the other hand, IL-6 and MCP-1 presented significant differences among the groups only on saliva assessment by a sensitive bead-based multiplex immunoassay, whereas IL-10, HLA-G, and TGF- β 1 presented significant differences among the groups only by IHC analysis ([Figure 3C](#)).

3.4.3. Assessed proteins are mainly expressed in the extracellular region and are involved in regulation of cell death, cell proliferation, and apoptosis

Gene Ontology (GO) enrichment analysis performed on PANTHER (71) demonstrated that the biological processes mainly involved with the set of 173 proteins assessed on this review were regulation of cell death (q -value = 5.8×10^{-42}) and regulation of cell proliferation (q -value = 8.31×10^{-40}) ([Figure 3D](#)). The top four biological processes ranked by adjusted p -value may be modulated by 110 of the 173 evaluated proteins and 54 genes were present in all top four biological processes ([Supplementary Appendix S9](#)).

Assessment of the cellular components revealed that the assessed proteins are mainly expressed in the extracellular space and extracellular region (q -value = 1.04×10^{-19} and 9.20×10^{-19} , respectively), cell surface (q -value = 5.98×10^{-16}), and vesicles (q -value = 4.70×10^{-14}), demonstrating that most of these proteins may be secreted and possibly enriched in secretome. In terms of molecular function, all identified proteins were mainly involved in cytokine receptor binding (q -value = 3.91×10^{-22}), protein and protein-containing complex binding (q -value = 7.50×10^{-17}) and signaling receptor binding (q -value = 2.80×10^{-16}) ([Figure 3D](#)).

3.4.4. Several evaluated genes present clinical correlation in TCGA and are HNSCC driver genes

Analysis of the association between mRNA expression of the evaluated proteins and clinicopathological features was performed using public information retrieved from TCGA. The analysis was performed with the list of 173 assessed genes in all included studies, and seventy-seven genes (44.5%) presented at least one significant association between protein abundance with TCGA clinical data (p -value ≤ 0.05) ([Supplementary Appendix S10](#)). The clinical characteristics that presented the greatest number of associated genes were neoplasm histological grade (19/173), pathological T grouped (14/173), and pathological N Status (11/173).

By searching for head and neck cancer driver genes, there was a total of 62 driver genes which were identified throughout 4 cohorts and 691 samples (25). When comparing the list of 62 driver genes for head and neck cancer with the list of 173 proteins identified in present systematic review, it was observed that 10 genes are common for both sets, namely: *B2M*, *CDKN2A*, *HRAS*, *MAPK1*, *NOTCH1*, *RBI*, *SMAD4*, *TGFBR2*, *TP53*, and *TP63*. Crosschecking the results of biological process enrichment with the TCGA analysis as well as driver genes assessment, it could be observed that all ten head and neck cancer driver genes are among the top four biological enriched processes, and also presented clinical association in TCGA data, revealing their potential as biomarkers.

3.5. Results of syntheses

Among the proteins identified in the included studies, 18 proteins could be combined in association meta-analysis according to their main tumoral function. A total of 35 studies were included in the quantitative analysis, compiling the data of 1,714 OSCC patients and 1,369 OL individuals. The odds ratio (OR) analysis showed no difference between OL and OSCC groups in the

abundance of tumor suppressor proteins p21, p16, Cyclin-D1, and p53 (Figures 4A–D). On the other hand, significant difference was observed among OL and OSCC patients in terms of positivity of pRb (OR: 1.72; 95% CI: 1.14 to 2.60; $I^2 = 0\%$; $p = 0.010$) (Figure 4E).

Regarding apoptosis suppressor proteins, Bcl-2 and survivin did not show differences among the groups as well (OR: 1.22 (95% CI: 0.45 to 3.32; $p = 0.70$) and 0.57 (95% CI: 0.29 to 1.13; $p = 0.15$), respectively) (Figures 5A,B). Nonetheless, the expression of proteins related to tumor progression, PD-L1, Mdm2, and Mucin-4 demonstrated significant association with greater positivity in patients diagnosed

with OSCC OR of 0.12 (95% CI: 0.04 to 0.40; $I^2 = 36\%$; $p = 0.0006$), 0.44 (95% CI: 0.24 to 0.81; $I^2 = 28\%$; $p = 0.009$), and 0.18 (95% CI: 0.04 to 0.86; $I^2 = 52\%$; $p = 0.03$) respectively (Figures 5C–E).

The association meta-analysis comparing cell migration and cell adhesion proteins demonstrated a significant difference between OL and OSCC patients in terms of periostin expression (OR: 0.10; 95% CI: 0.03 to 0.37; $I^2 = 0\%$; $p = 0.0006$) and Cadherin-1 positivity (OR: 33.63; 95% CI: 4.10 to 275.62; $I^2 = 0\%$; $p = 0.001$) (Figures 6A,B). On the other hand, Epidermal growth factor receptor (EGFR) and podoplanin did not show any difference

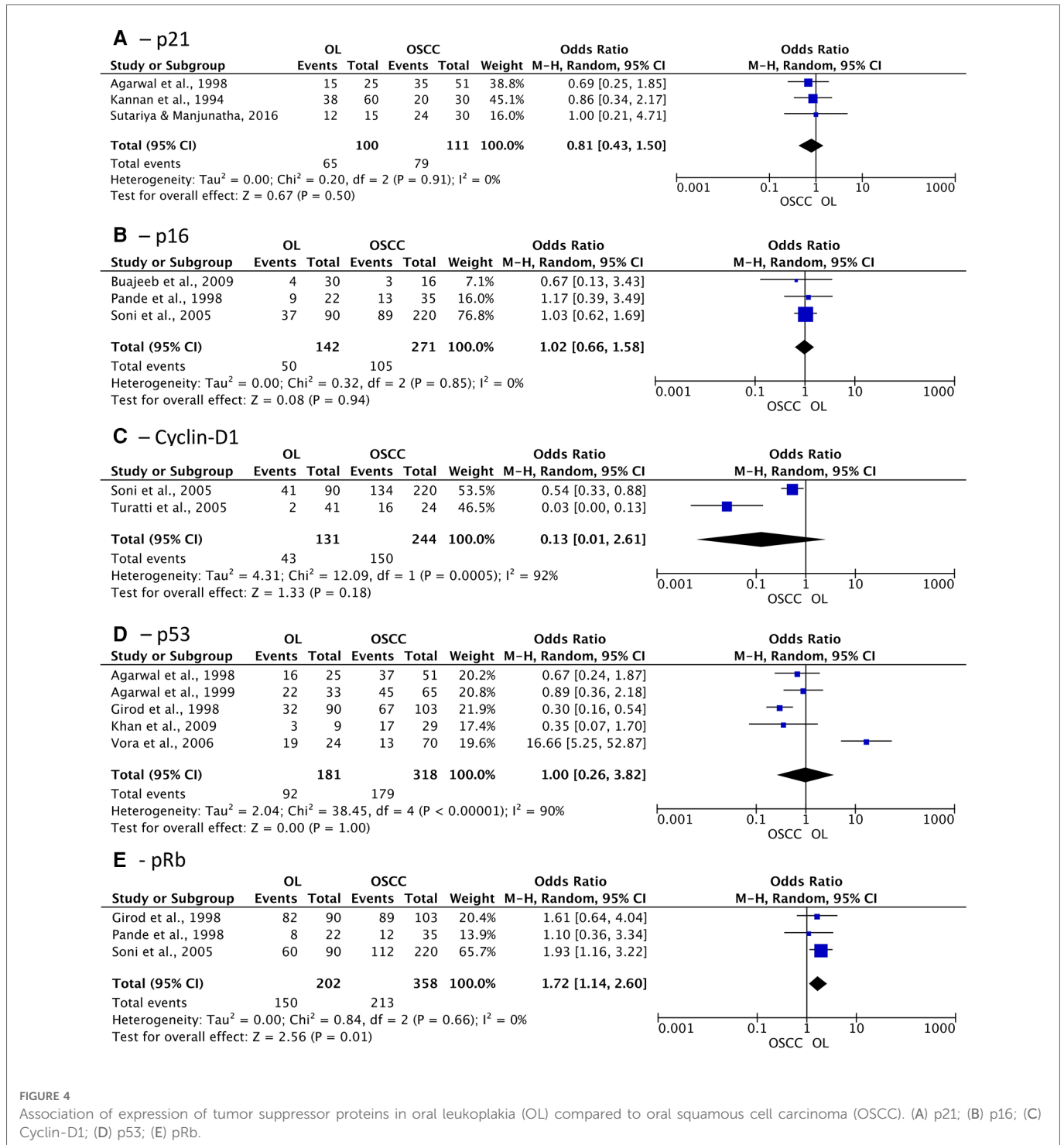
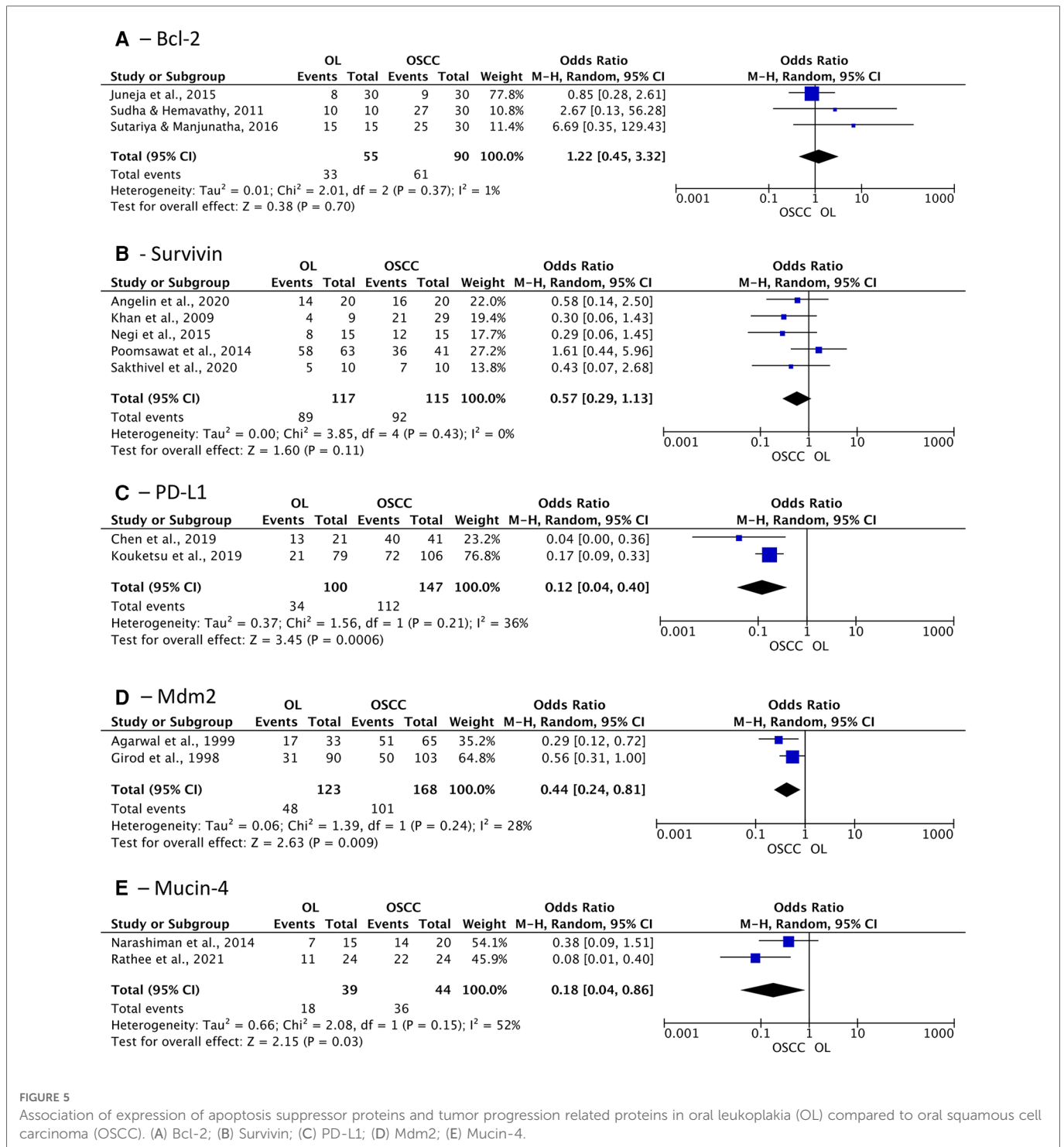


FIGURE 4 Association of expression of tumor suppressor proteins in oral leukoplakia (OL) compared to oral squamous cell carcinoma (OSCC). (A) p21; (B) p16; (C) Cyclin-D1; (D) p53; (E) pRb.



between the groups, with an OR of 0.59 ($p=0.39$) and 0.21 ($p=0.06$), respectively.

Finally, cytokeratins (CK) 8, 13, 18, and 19 were pooled in subgroup analysis, revealing that collectively these genes do not show positivity difference, although separately CK-13 and CK-19 have shown significant difference between groups, with an OR of 38.21 (95% CI: 12.43 to 117.46; $I^2=0\%$; $p<0.00001$) and 0.31 (95% CI: 0.11 to 0.89; $I^2=58\%$; $p=0.03$), respectively (Figure 7). This result demonstrates that not all CKs are suitable for

distinguishing OSCC from OL, and CK-13 and CK-19 may represent better options.

3.6. Certainty of evidence

The certainty of evidence from outcomes assessed by the meta-analysis were analyzed on GRADE system. For the association outcomes, moderate certainty of evidence was observed for the expression of pRb, Cadherin-1, Mdm2, p16, PD-L1, Podoplanin,

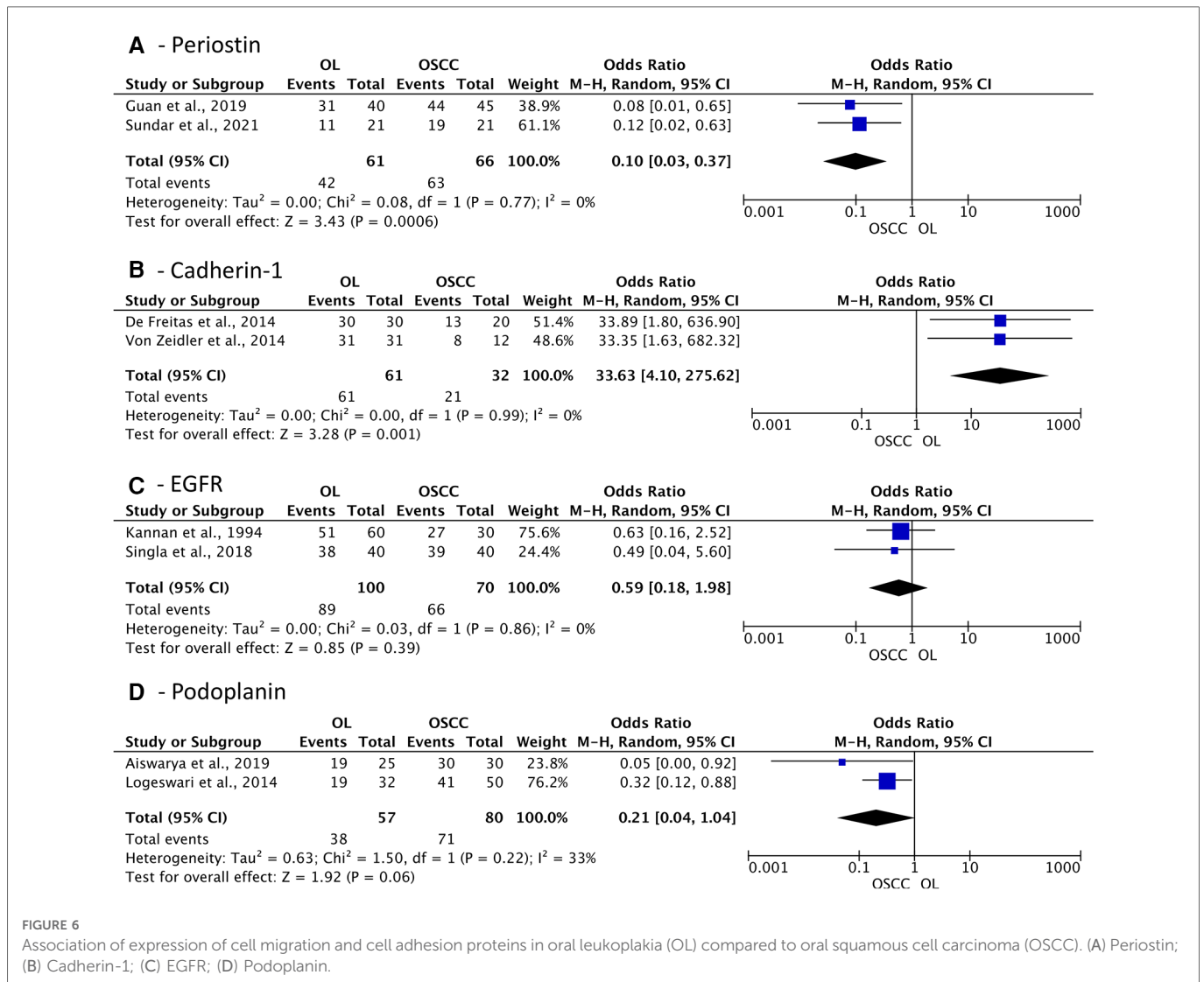


FIGURE 6 Association of expression of cell migration and cell adhesion proteins in oral leukoplakia (OL) compared to oral squamous cell carcinoma (OSCC). (A) Periostin; (B) Cadherin-1; (C) EGFR; (D) Podoplanin.

Mucin-4, and periostin (Supplementary Appendix S11). This result reveals that further research may have an important impact on the confidence in the estimate of effect and could change the current results.

On the other hand, low certainty of evidence was demonstrated for the expression of survivin, p21, EGFR, and Bcl-2. For the expression of p53, cytokeratins, and Cyclin-D1 there was a very low certainty of evidence. Low and very low certainty of evidence were observed for these outcomes especially due to high risk of bias, considerable inconsistency, and consistent imprecision, revealing that further research will probably have an important impact on the confidence in the estimate of effect and is very likely to change it.

4. Discussion

Oral leukoplakia is among the most prevalent OPMD, with a mean rate of malignant transformation of approximately 15% (11). The disorder is still currently diagnosed by histopathological analysis, although microinvasive carcinoma may already be diagnosed at the initial assessment (4). Thus, it is of paramount

importance to understand the molecular biology underneath this disorder and reveal biological markers of malignant transformation that may assist on future clinical assessment. The presence and grade of dysplasia is an important predictive marker to assess the risk for malignant transformation although not sufficiently accurate to define treatment and follow-up (11). Therefore, the search for protein markers that could predict the risk of malignant transformation could be critical for early treatment, improved survival, and decreased morbidity. To the best of our knowledge, this is the first systematic review with an association meta-analytical approach that aimed to assess protein biomarkers potentially involved with the malignant transformation of OL. Moreover, this review provided a list of protein candidates for further verification and validation assays.

Much effort has been done to summarize the literature regarding biomarkers of OL, OPMD, and dysplasia (8, 10, 17). Mello et al. (2020) (10) assessed general prognostic biomarkers in biopsy tissues of overall OPMD and found that the most evaluated proteins were p53, Ki-67, podoplanin, and p16, similar to our review. Also, they observed that studies investigating podoplanin reported a significant association between positive/high immunoeexpression and malignant transformation, which was also

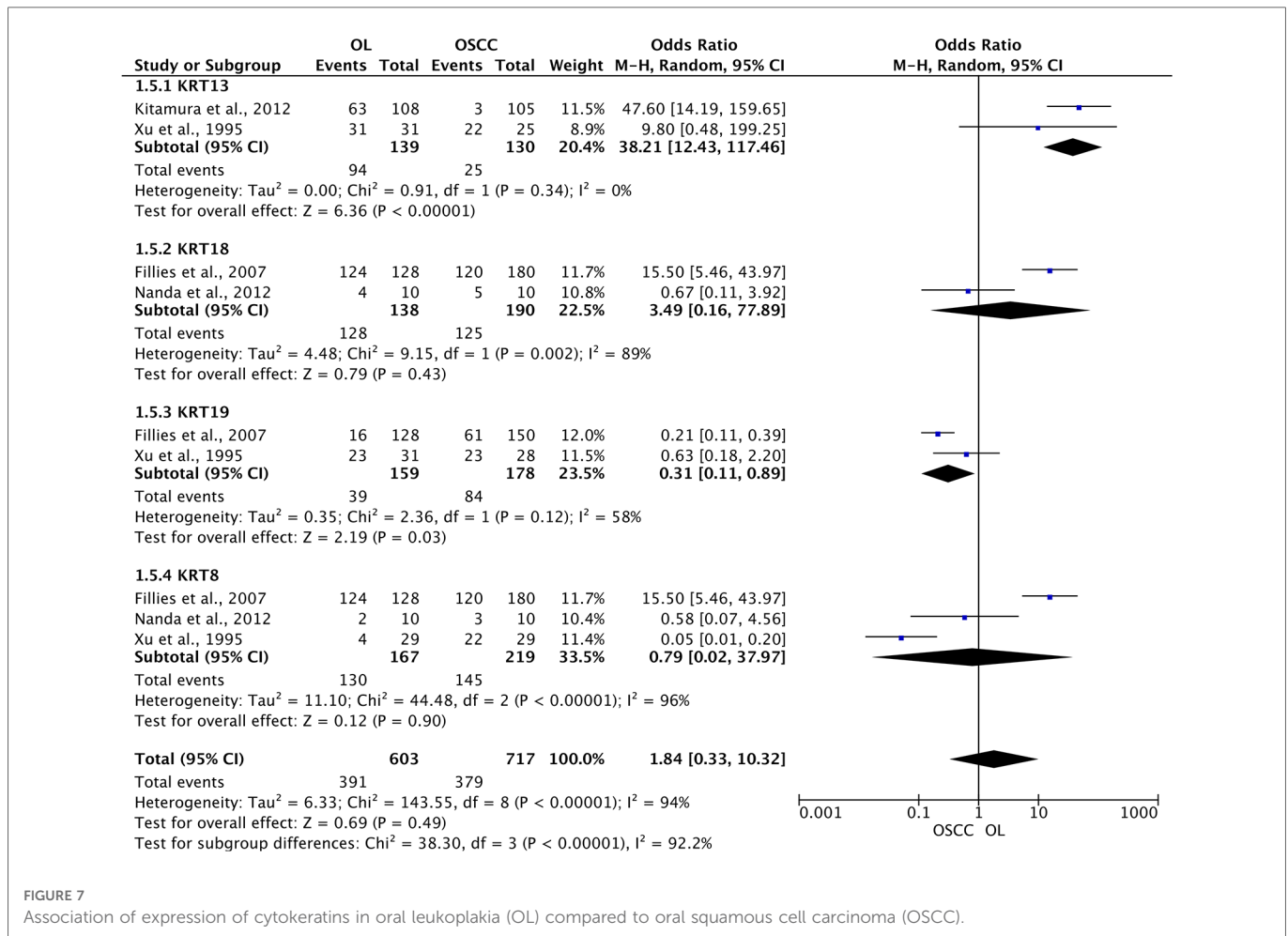


FIGURE 7

Association of expression of cytokeratins in oral leukoplakia (OL) compared to oral squamous cell carcinoma (OSCC).

observed in the studies assessing OL exclusively (72–74). Rivera et al. (2020) (8) also found podoplanin as one of the most assessed biomarkers of progression of dysplasia to oral cancer, as well as Aldehyde dehydrogenase 1A1 which were revealed to be associated with OSCC features according to TCGA as demonstrated by our systematic review. Monteiro et al. (2020) (17) performed a review of tissue biomarkers capable of predicting the risk of oral cancer in OL patients and found among 46 studies that the most assessed proteins were again podoplanin and p53. Podoplanin is a mucin-type transmembrane glycoprotein that mediates cell migration and adhesion, and its expression has been reported in squamous cell carcinomas and dysplastic lesions, suggesting that podoplanin may play a role in early oral tumorigenesis and in the malignant transformation (38, 75). Thus, further assessment of this protein, especially in other types of samples, are encouraging.

Assessing the proteins analyzed in at least four of the included studies, we provided a set of 13 proteins that have been majority investigated, including tumor suppressor proteins such as p53, pRb, and p16. The level of p53 has already been proven to progressively increase from normal mucosa to OL, to OSCC, following a progression toward malignancy (33, 48, 50, 51). Regarding pRb, which is also a tumor suppressor protein, some studies reported that most of the lesions stained positively (47, 49), whilst a reduction of pRb expression could be observed in transition from hyperplasia to dysplasia ($p = 0.005$) and from OL to OSCC ($OR = 2.938, p = 0.001$)

(52, 53). Conversely, p16 expression linearly decreased from normal mucosa to dysplastic OL and to OSCC (47, 52, 53).

Cell proliferation proteins (Ki-67, CK-14, and Survivin) have also been extensively investigated in OL patients compared to oral cancer samples. It has been demonstrated that Ki-67 expression gradually increased through normal, non-dysplastic and dysplastic OL, and OSCC (36, 54, 55). The expression of Survivin and CK-14 also seemed statistically different among OSCC, OL, and normal mucosa, usually overexpressed in OSCC ($p < 0.01$) (28, 41, 42, 56–58).

Finally, immune system related proteins (IL-6, PD-L1, and COX-2), cell death regulators (Bcl-2 and TNF- α) as well as proteins associated with growth regulation (TGF- β 1) and cell migration/adhesion (Podoplanin) were also repeatedly evaluated, in at least four studies. PD-L1, which is a protein encoded by the *CD274* gene, is overexpressed by numerous tumor cells as a strategy to evade immune responses (60). Stronger PD-L1 level was observed in both OSCC, and OL compared to normal control ($p < 0.0001$). In transformed OL, a significant 60-fold overexpression ($p = 0.04$) and in OSCC a 99.4-fold increase of PD-L1 level was detected and related to malignant transformation ($p = 0.03$) (59, 60). Regarding cell death regulators, TNF- α salivary concentration was found to be higher in OSCC patients than in controls ($p = 0.0012$) and non-dysplastic OL ($p = 0.0492$), although linear increase in salivary levels from normal mucosa to OL to OSCC has been also

observed ($p < 0.01$). These findings demonstrated that TNF- α may be used to monitor the malignant transformation from OL to OSCC (45, 65, 76).

Cancer is characterized by abnormal and uncontrolled cellular growth primarily caused by genetic mutations known as “drivers” due to their ability to drive tumorigenesis. These mutations occur in a set of genes known as “cancer driver genes”, which consequently affect homeostatic key cellular functions (25). Among the 173 proteins assessed in the review, ten proteins were characterized as head and neck SCC driver genes, revealing the growing interest in also analyzing these genes in the process of progression from OL to oral cancer. A signature including driver genes suggests that this set may be effective in detecting proteins that may play a fundamental role in cancer maintenance by regulating the expression of several other OSCC suppressor or promoter genes. Of interest, as obtained by TCGA, *CDKN2A*, *RBI*, and *TP53* genes expression was correlated with clinical and pathological characteristics. *CDKN2A*, *RBI*, and *TP53* not only are driver genes but also present correlation with alcohol and tobacco history, final vital status, and neoplasm histologic grade in OSCC. Furthermore, all these three tumor suppressor genes could be pooled in association meta-analysis but only *RBI* positivity was significantly associated with OL compared to OSCC. Although *B2M*, *MAPK1*, and *SMAD4*, which are also driver genes, could not be pooled in the meta-analysis, they correlated with neoplasm histologic grade, pathologic stage and N status, final vital status, and HPV status in OSCC as demonstrated by TCGA clinical and pathological correlation analysis.

Taken altogether, analyzing protein levels to determine the susceptibility for transformation of potentially malignant oral lesions seems to be a promising method for potential risk determination and personalized management planning. Most of the studies included in the present systematic review evaluated protein expression primarily from IHC methods in FFPE tissues, which agrees with other previously published studies (10). Only 22 studies evaluated proteins in biofluids from patients with leukoplakia and OSCC. This result suggests that these proteins may compose the subproteome and may be suitable for assessment *via* biological fluids despite having their expression evaluated mainly in tissues. Given the ease of collection and the abundance of proteins in biofluids, it is still necessary to explore these types of samples in terms of progression risk, prognosis, and diagnosis feasibility. Interestingly, despite few studies evaluating protein expression in biofluids, most proteins were enriched in the extracellular space, in vesicles, or on the cell surface, demonstrating that these proteins may probably be quantified in biofluids. This would be advantageous as risk stratification and could be performed from simple and minimally invasive sample collections.

4.1. Limitations

Some limitations of the present systematic review and the included studies should be pointed out. First, the high heterogeneity in terms of assessed proteins and types of samples hindered a more focused and in-depth analysis of each protein individually. Furthermore, methodological heterogeneity may have

led to statistical heterogeneity, as well as limiting the inclusion of more studies in the meta-analysis. In some studies, it was difficult to determine the assessment of malignant transformation when this was not the main outcome, and many studies had to be excluded as they did not determine which potentially malignant disorders were evaluated or did not individualize the leukoplakia data. Also, many studies were assessed as having high risk of bias due to lack of methodological rigor including inadequate statistical analysis. Thus, further well-designed studies are still needed to assess the expression of proteins capable of predicting the risk of malignant transformation of leukoplakia into oral cancer, especially in biofluids.

4.2. Conclusion

Assessing proteins in samples of OL patients has been gradually increasing to determine similarities and disparities with oral cancer patients that may indicate an increased risk of malignancy. The present review presented a list of 173 proteins that have already been assessed among patients diagnosed with oral SCC and OL, mainly detected in FFPE tissues as well as in biofluids. From these proteins, PD-L1, Mdm2, and Mucin-4 were significantly associated with greater abundance in OSCC patients, with a moderate certainty of evidence. The proteomic approach allowed the characterization of a set of proteins that have been investigated across OSCC initiation and progression. Moreover, the transcriptional expression in tissue is associated with clinical characteristics relevant to determine the prognosis and aggressiveness of the disease. Thus, further verification and validation are strongly recommended for future clinical application.

5. Other information

5.1. Protocol and registration

The methods of this systematic review were established prior to the review commencement and the resulting protocol based on PRISMA-P (77) that was registered at the International Prospective Register of Systematic Reviews (PROSPERO) database under registration number CRD42020157561. Also, the present systematic review was reported according to the Preferred Reporting Items for Systematic Reviews and Meta-Analyses (PRISMA) checklist (26).

Acknowledgment

The authors would like to acknowledge The São Paulo Research Foundation (FAPESP) for the financial support under grant numbers 2018/18496-6, 2018/15535-0, 2019/09692-9, 2019/18751-9, 2021/05965-0, 2021/03319-4, and 2022/04490-1; and National Council for Scientific and Technological Development (CNPq) under grant number 310392/2021-7. Also, The Cancer Genoma Atlas as results shown here are in whole or part based upon data generated by the TCGA Research Network: <https://www.cancer.gov/tcga>.

Author contributions

AN, ES, and APL contributed to conception and design of the study. AN and ES were responsible for data acquisition. JS, ABL, TR, FP, and DG performed the quality control of data. AN, ABL, and FP performed the statistical analysis. AN wrote the first draft of the manuscript. ES, JS, ABL, TR, FP, DG, EG, ASS, ML and APL wrote sections of the manuscript. All authors contributed to the article and approved the submitted version.

Funding

The research being submitted was funded by The São Paulo Research Foundation (FAPESP) under grant numbers 2018/18496-6, 2018/15535-0, 2019/09692-9, 2019/18751-9, 2021/05965-0, 2021/03319-4, and 2022/04490-1; and National Council for Scientific and Technological Development (CNPq) under grant number 310392/2021-7.

References

- Sung H, Ferlay J, Siegel RL, Laversanne M, Soejomataram I, Jemal A, et al. Global cancer statistics 2021: GLOBOCAN estimates of incidence and mortality worldwide for 36 cancers in 185 countries. *CA Cancer J Clin.* 71(3), 209–249 (2021) 71(3):209–49. doi: 10.3322/caac.21660.
- Capote-Moreno A, Brabyn P, Muñoz-Guerra MF, Sastre-Pérez J, Escorial-Hernandez V, Rodríguez-Campo FJ, et al. Oral squamous cell carcinoma: epidemiological study and risk factor assessment based on a 39-year series. *Int J Oral Maxillofac Surg.* (2020) 49:1525–34. doi: 10.1016/j.ijom.2020.03.009
- Sivadasan P, Gupta MK, Sathe G, Sudheendra HV, Sunny SP, Renu D, et al. Salivary proteins from dysplastic leukoplakia and oral squamous cell carcinoma and their potential for early detection. *J Proteomics.* (2020) 212, 103574. doi: 10.1016/j.jprot.2019.103574
- Warnakulasuriya S, Kujan O, Aguirre-Urizar JM, Bagan JV, González-Moles MÁ, Kerr AR, et al. Oral potentially malignant disorders: a consensus report from an international seminar on nomenclature and classification, convened by the WHO collaborating centre for oral cancer. *Oral Dis.* (2021) 27:1862–80. doi: 10.1111/ODI.13704
- Mello FW, Miguel AFP, Dutra KL, Porporatti AL, Warnakulasuriya S, Guerra ENS, et al. Prevalence of oral potentially malignant disorders: a systematic review and meta-analysis. *J Oral Pathol Med.* (2018) 47:633–40. doi: 10.1111/JOP.12726
- Lerman MA, Almazrooa S, Lindeman N, Hall D, Villa A, Woo SB. HPV-16 in a distinct subset of oral epithelial dysplasia. *Mod Pathol.* (2017) 30:1646–54. doi: 10.1038/MOPATHOL.2017.71
- Iocca O, Sollecito TP, Alawi F, Weinstein GS, Newman JG, de Virgilio A, et al. Potentially malignant disorders of the oral cavity and oral dysplasia: a systematic review and meta-analysis of malignant transformation rate by subtype. *Head Neck.* (2020) 42:539–55. doi: 10.1002/HED.26006
- Rivera C, Gallegos R, Figueroa C. Biomarkers of progression to oral cancer in patients with dysplasia: a systematic review. *Mol Clin Oncol.* (2020) 13:1–7. doi: 10.3892/MCO.2020.2112
- Ranganathan K, Kavitha L. Oral epithelial dysplasia: classifications and clinical relevance in risk assessment of oral potentially malignant disorders. *J Oral Maxillofac Pathol.* (2019) 23:19–27. doi: 10.4103/JOMFP.JOMFP_13_19
- Mello FW, Melo G, Guerra ENS, Warnakulasuriya S, Garnis C, Rivero ERC. Oral potentially malignant disorders: a scoping review of prognostic biomarkers. *Crit Rev Oncol Hematol.* (2020) 153:102986. doi: 10.1016/j.critrevonc.2020.102986
- Warnakulasuriya S, Ariyawardana A. Malignant transformation of oral leukoplakia: a systematic review of observational studies. *J Oral Pathol Med.* (2016) 45:155–66. doi: 10.1111/JOP.12339
- Rivera C, Oliveira AK, Costa RAP, de Rossi T, Leme AF Paes. Prognostic biomarkers in oral squamous cell carcinoma: a systematic review. *Oral Oncol.* (2017) 72:38–47. doi: 10.1016/j.oraloncology.2017.07.003

Conflict of interest

The authors declare that the research was conducted in the absence of any commercial or financial relationships that could be construed as a potential conflict of interest.

Publisher's note

All claims expressed in this article are solely those of the authors and do not necessarily represent those of their affiliated organizations, or those of the publisher, the editors and the reviewers. Any product that may be evaluated in this article, or claim that may be made by its manufacturer, is not guaranteed or endorsed by the publisher.

Supplementary material

The Supplementary Material for this article can be found online at: <https://www.frontiersin.org/articles/10.3389/froh.2023.1088022/full#supplementary-material>.

- Macklin A, Khan S, Kislinger T. Recent advances in mass spectrometry based clinical proteomics: applications to cancer research. *Clin Proteomics.* (2020) 17:1–25. doi: 10.1186/S12014-020-09283-W
- Kawahara R, Bollinger JG, Rivera C, Ribeiro ACP, Brandão TB, Leme AFP, et al. A targeted proteomic strategy for the measurement of oral cancer candidate biomarkers in human saliva. *Proteomics.* (2016) 16:159–73. doi: 10.1002/PMIC.201500224
- Carnielli CM, Macedo CCS, de Rossi T, Granato DC, Rivera C, Domingues RR, et al. Combining discovery and targeted proteomics reveals a prognostic signature in oral cancer. *Nat Commun.* (2018) 9:3598. doi: 10.1038/S41467-018-05696-2
- Neves LX, Granato DC, Busso-Lopes AF, Carnielli CM, de Sá Patroni FM, de Rossi T, et al. Peptidomics-Driven strategy reveals peptides and predicted proteases associated with oral cancer prognosis. *Mol Cell Proteomics.* (2021) 20:100004. doi: 10.1074/MCP.RA120.002227
- Monteiro L, Mello FW, Warnakulasuriya S. Tissue biomarkers for predicting the risk of oral cancer in patients diagnosed with oral leukoplakia: a systematic review. *Oral Dis.* (2021) 27: 1977–92. doi: 10.1111/ODI.13747
- Ouzzani M, Hammady H, Fedorowicz Z, Elmagarmid A. Rayyan-a web and mobile app for systematic reviews. *Syst Rev.* (2016) 5:210. doi: 10.1186/S13643-016-0384-4
- Moola MZ, Tufanaru C, Aromataris E, Sears K, Sfetcu R, Currie M, et al. Chapter 7: systematic reviews of etiology and risk. In: Aromataris E, Munn Z, editors. *JBI Manual for evidence synthesis.* Adelaide, Australia: JBI (2020).
- Higgins TJ, Chandler J, Cumpston M, Li T, Page MJ, Welch VA, editors. *Cochrane handbook for systematic reviews of interventions.* 2nd Edition. Chichester (UK): John Wiley & Sons (2019).
- Schünemann H, Brożek J, Guyatt G, Oxman A. GRADE handbook for grading quality of evidence and strength of recommendations. Available from guidelinedevelopment.org/handbook. *The GRADE Working Group* (2013). guidelinedevelopment.org/handbook (Accessed June 26, 2022).
- University McMaster. GRADEpro GDT: GRADEpro Guideline Development Tool [Software]. (2020).
- Yeung KY, Fraley C, Murua A, Raftery AE, Ruzzo WL. Model-based clustering and data transformations for gene expression data. *Bioinformatics.* (2001) 17: 977–87. doi: 10.1093/BIOINFORMATICS/17.10.977
- Shapiro SS, Wilk MB. An analysis of variance test for normality (complete samples). *Biometrika.* (1965) 52:591–611. doi: 10.2307/2333709
- Martínez-Jiménez F, Muiños F, Sentís I, Deu-Pons J, Reyes-Salazar I, Arnedo-Pac C, et al. A compendium of mutational cancer driver genes. *Nat Rev Cancer.* (2020) 20:555–72. doi: 10.1038/S41568-020-0290-X
- Page MJ, Moher D, Bossuyt PM, Boutron I, Hoffmann TC, Mulrow CD, et al. PRISMA 2020 Explanation and elaboration: updated guidance and exemplars for reporting systematic reviews. *Br Med J.* (2021) 372:n160. doi: 10.1136/bmj.n160

27. Warnakulasuriya S, Johnson NW, Nomenclature van der Waal I. and classification of potentially malignant disorders of the oral mucosa. *J Oral Pathol Med.* (2007) 36:575–80. doi: 10.1111/j.1600-0714.2007.00582.X
28. Poomsawat S, Panyasingh J, Vejchapitap P. Overexpression of survivin and caspase 3 in oral carcinogenesis. *Appl Immunohistochem Mol Morphol.* (2014) 22:65–71. Available at: www.appliedimmunohist.com. doi: 10.1097/PAI.0b013e31828a0d0c
29. Garg R, Shetti AV, Assessment Bagewadi AS. and comparison of salivary survivin biomarker in oral leukoplakia, oral lichen planus, and oral cancer: a comparative study. *World J Dent.* (2017) 8:73–6. doi: 10.5005/jp-journals-10015-1415
30. Chamorro-Petronacci CM, de Mendoza ILI, Suarez-Peñaranda JM, Padin-Iruegas E, Blanco-Carrion A, Lorenzo-Pouso AI, et al. Immunohistochemical characterization of bcl-2 in oral potentially malignant disorders. *Appl Immunohistochem Mol Morphol.* (2021) 29(9):706–712. doi: 10.1097/PAI.0000000000000945
31. Saddiwal R, Hebbale M, Sane VD, Hiremutt D, Gupta R, Merchant Y. Estimation of Serum Beta 2-microglobulin levels in individuals exposed to carcinogens: clinical study in Indian population. *J Maxillofac Oral Surg.* (2017) 16:53–7. doi: 10.1007/s12663-016-0914-6
32. Dwivedi R, Chandra S, Mehrotra D, Raj V, Pandey R. Predicting transition from oral pre-malignancy to malignancy via bcl-2 immuno-expression: evidence and lacunae. *J Oral Biol Craniofac Res.* (2020) 10(4):397–403. doi: 10.1016/J.JOBCR.2020.07.003
33. Sabitha S, Mohan J, Madhavan Nirmal R, Vasanthan P, Jeeva J Sathiya. Immunoeexpression of p53, bax and hTERT in oral epithelial dysplasia and oral squamous cell carcinoma-A comparative study. *J Adv Med Dent Sci Res.* (2018) 6:30–5. doi: 10.21276/jamdsr
34. Xia J, Chen N, Hong Y, Chen X, Tao X, Cheng B, et al. Expressions of CXCL12/CXCR4 in oral premalignant and malignant lesions. *Mediators Inflamm.* (2012) 2012:516395. doi: 10.1155/2012/516395
35. Sakthivel R, Ramamoorthy A, Jeddy N, Singaram M. Evaluation and expression of survivin in potentially malignant lesions and squamous cell carcinoma: a comparative study. *Cureus.* (2020) 12(4):e7551. doi: 10.7759/CUREUS.7551
36. Klein IP, Meurer L, Danilevicius CK, Squarize CH, Martins MD, Carrard VC. BML-1 expression increases in oral leukoplakias and correlates with cell proliferation. *J Appl Oral Sci.* (2020) 28:1–10. doi: 10.1590/1678-7757-2019-0532
37. Singla S, Singla G, Zaheer S, Rawat DS, Mandal AK. Expression of p53, epidermal growth factor receptor, c-erbB2 in oral leukoplakias and oral squamous cell carcinomas. *J Cancer Res Ther.* (2018) 14:388–93. doi: 10.4103/0973-1482.191027
38. Schacht V, Dadras SS, Johnson LA, Jackson DG, Hong YK, Detmar M. Up-regulation of the lymphatic marker podoplanin, a mucin-type transmembrane glycoprotein, in human squamous cell carcinomas and germ cell tumors. *Am J Pathol.* (2005) 166:913–21. doi: 10.1016/S0002-9440(10)62311-5
39. de Vicente JC, del Molino PDP, Rodrigo JP, Allonca E, Hermida-Prado F, Granda-Diaz R, et al. SOX2 Expression is an independent predictor of oral cancer progression. *J Clin Med.* (2019) 8. doi: 10.3390/JCM8101744
40. Shetty SR, Chadha R, Babu S, Kumari S, Bhat S, Achalli S. Salivary lactate dehydrogenase levels in oral leukoplakia and oral squamous cell carcinoma: a biochemical and clinicopathological study. *J Cancer Res Ther.* (2012) 8 Suppl 1: S123–5. doi: 10.4103/0973-1482.92226
41. Angelin D, Nair B. Comparative evaluation of survivin expression in leukoplakia, lichen planus, and oral squamous cell carcinoma: an immunohistochemical study. *J Cancer Res Ther.* (2020) 16:569–74. doi: 10.4103/jrcr.JCRT_421_19
42. Negi A, Puri A, Gupta R, Nangia R, Sachdeva A, Mittal M. Comparison of immunohistochemical expression of antiapoptotic protein survivin in normal oral mucosa, oral leukoplakia, and oral squamous cell carcinoma. *Patholog Res Int.* (2015) 2015:840739. doi: 10.1155/2015/840739
43. Turatti E, da Costa Neves A, de Magalhães MHCG, de Sousa SOM. Assessment of c-jun, c-fos and cyclin D1 in premalignant and malignant oral lesions. *J Oral Sci.* (2005) 47:71–6. doi: 10.2334/JOSNUSD.47.71
44. Pereira T, Shetty S, Pereira S. Estimation of serum lactate dehydrogenase level in patients with oral premalignant lesions/conditions and oral squamous cell carcinoma: a clinicopathological study. *J Cancer Res Ther.* (2015) 11:78–82. doi: 10.4103/0973-1482.150352
45. Babiuch K, Kuśnierz-Cabala B, Kęsek B, Okoń K, Darczuk D, Chomyszyn-Gajewska M. Evaluation of proinflammatory, nf-kappab dependent cytokines: il-1 α , il-6, il-8, and TNF- α in tissue specimens and saliva of patients with oral squamous cell carcinoma and oral potentially malignant disorders. *J Clin Med.* (2020) 9(3), 867. doi: 10.3390/jcm9030867
46. Sravya T, Sivarjanji Y, Rao G. Immunohistochemical expression of budding uninhibited by benzimidazole related 1 in leukoplakia and oral squamous cell carcinoma. *J Oral Maxillofac Pathol.* (2016) 20:71–7. doi: 10.4103/0973-029X.180938
47. Nasser W, Flechtenmacher C, Holzinger D, Hofele C, Bosch FX. Aberrant expression of p53, p16 INK4a and ki-67 as basic biomarker for malignant progression of oral leukoplakias. *J Oral Pathol Med.* (2011) 40:629–35. doi: 10.1111/j.1600-0714.2011.01026.x
48. Fan GK, Chen J, Ping F, Geng Y. Immunohistochemical analysis of P57(kip2), p53 and hsp60 expressions in premalignant and malignant oral tissues. *Oral Oncol.* (2006) 42:147–53. doi: 10.1016/j.oraloncology.2005.06.017
49. Girod SC, Pfeiffer P, Ries J, Pape HD. Proliferative activity and loss of function of tumour suppressor genes as “biomarkers” in diagnosis and prognosis of benign and preneoplastic oral lesions and oral squamous cell carcinoma. *Br J Oral Maxillofac Surg.* (1998) 36:252–60. doi: 10.1016/S0266-4356(98)90708-2
50. Soares CP, Zuanon JAS, Teresa DB, Fregonezi PA, Neto CB, Oliveira MRB, et al. Quantitative cell-cycle protein expression in oral cancer assessed by computer-assisted system. *Histol Histopathol.* (2006) 21:721–8. doi: 10.14670/HH-21.721
51. Varun BR, Ranganathan K, Rao UK, Joshua E. Immunohistochemical detection of p53 and p63 in oral squamous cell carcinoma, oral leukoplakia, and oral submucous fibrosis. *J Investig Clin Dent.* (2014) 5:214–9. doi: 10.1111/jicd.12038
52. Soni S, Kaur J, Kumar A, Chakravarti N, Mathur M, Bahadur S, et al. Alterations of rb pathway components are frequent events in patients with oral epithelial dysplasia and predict clinical outcome in patients with squamous cell carcinoma. *Oncology.* (2005) 68:314–25. doi: 10.1159/000086970
53. Pande P, Mathur M, Shukla NK, Ralhan R. Prb and p16 protein alterations in human oral tumorigenesis. *Oral Oncol.* (1998) 34(5):396–403. doi: 10.1016/S1368-8375(98)00024-4
54. Nogami T, Kuyama K, Histopathological Yamamoto H. and immunohistochemical study of malignant transformation of oral leukoplakia, with special reference to apoptosis-related gene products and proliferative activity. *Acta Otolaryngol.* (2003) 123:767–75. doi: 10.1080/00016480310000700b
55. Lameira AG, Pontes FSC, Guimarães DM, Alves ACG, de Jesus AS, Pontes HAR, et al. MCM3 Could be a better marker than ki-67 for evaluation of dysplastic oral lesions: an immunohistochemical study. *J Oral Pathol Med.* (2014) 43:427–34. doi: 10.1111/jop.12153
56. Matsubara R, Kawano S, Kiyosue T, Goto Y, Hirano M, Jinno T, et al. Increased Δ Np63 expression is predictive of malignant transformation in oral epithelial dysplasia and poor prognosis in oral squamous cell carcinoma. *Int J Oncol.* (2011) 39:1391–9. doi: 10.3892/ijo.2011.1151
57. Khan Z, Tiwari RP, Mulherkar R, Sah NK, Prasad GBKS, Shrivastava BR, et al. Detection of survivin and p53 in human oral cancer: correlation with clinicopathologic findings. *Head Neck.* (2009) 31:1039–48. doi: 10.1002/hed.21071
58. Ohkura S, Kondoh N, Hada A, Arai M, Yamazaki Y, Sindoh M, et al. Differential expression of the keratin-4, -13, -14, -17 and transglutaminase 3 genes during the development of oral squamous cell carcinoma from leukoplakia. *Oral Oncol.* (2005) 41:607–13. doi: 10.1016/j.oraloncology.2005.01.011
59. Chen XJ, Tan YQ, Zhang N, He MJ, Zhou G. Expression of programmed cell death-ligand 1 in oral squamous cell carcinoma and oral leukoplakia is associated with disease progress and CD8 + tumor-infiltrating lymphocytes. *Pathol Res Pract.* (2019) 215(6):152418. doi: 10.1016/j.prp.2019.04.010
60. Ries J, Agaimy A, Wehrhan F, Baran C, Bolze S, Danzer E, et al. Importance of the pd-1/pd-l1 axis for malignant transformation and risk assessment of oral leukoplakia. *Biomedicines.* (2021) 9:1–26. doi: 10.3390/biomedicines9020194
61. Santhi WS, Sebastian P, Varghese BT, Prakash O, Pillai MR. NF- κ B and COX-2 during oral tumorigenesis and in assessment of minimal residual disease in surgical margins. *Exp Mol Pathol.* (2006) 81:123–30. doi: 10.1016/j.yexmp.2006.05.001
62. Pontes HAR, Pontes FSC, Fonseca FP, de Carvalho PL, Pereira EM, de Abreu MC, et al. Nuclear factor κ b and cyclooxygenase-2 immunoeexpression in oral dysplasia and oral squamous cell carcinoma. *Ann Diagn Pathol.* (2013) 17:45–50. doi: 10.1016/j.andiagpath.2012.04.008
63. Aruldoss N, Sarvathikari R, Srivastav CK, Austin RD. Expression of cyclooxygenase-2 enzyme in the tissue samples of patients with various clinicopathological stages of oral leukoplakia and oral squamous cell carcinoma. *J Indian Acad Oral Med Radiol.* (2016) 28:134–9. doi: 10.4103/0972-1363.195096
64. Renkonen J, Wolff H, Paavonen T. Expression of cyclo-oxygenase-2 in human tongue carcinoma and its precursor lesions. *Virchows Arch.* (2002) 440:594–7. doi: 10.1007/s00428-002-0616-y
65. Dikova V, Jantus-Lewintre E, Bagan J. Potential non-invasive biomarkers for early diagnosis of oral squamous cell carcinoma. *J Clin Med.* (2021) 10 (8):1658. doi: 10.3390/jcm10081658
66. Selvam N Panneer, Sadaksharam J. Salivary interleukin-6 in the detection of oral cancer and precancer. *Asia Pac J Clin Oncol.* (2015) 11(3):236–41. doi: 10.1111/ajco.12330
67. Gonçalves AS, Mosconi C, Jaeger F, Wastowski JJ, Aguiar MCF, Silva TA, et al. Overexpression of immunomodulatory mediators in oral precancerous lesions. *Hum Immunol.* (2017) 78:752–7. doi: 10.1016/j.humimm.2017.09.003
68. Guan WQ, Li Q. Expression Ouyang QM. and significance of periostin in tissues and serum in oral leukoplakia and squamous cell carcinoma. *Cancer Biother Radiopharm.* (2019) 34:444–50. doi: 10.1089/cbr.2018.2764
69. Ding L, Zhao X, Zhu N, Zhao M, Hu Q, Ni Y. The balance of serum IL-18/IL-37 levels is disrupted during the development of oral squamous cell carcinoma. *Surg Oncol.* (2020) 32:99–107. doi: 10.1016/j.suronc.2019.12.001
70. Lin L, Wang J, Liu D, Liu S, Xu H, Ji N, et al. Interleukin-37 expression and its potential role in oral leukoplakia and oral squamous cell carcinoma. *Sci Rep.* (2016) 6:26757. doi: 10.1038/srep26757
71. Mi H, Ebert D, Muruganujan A, Mills C, Albuo LP, Mushayamaha T, et al. PANTHER Version 16: a revised family classification, tree-based classification tool, enhancer regions and extensive API. *Nucleic Acids Res.* (2021) 49:D394–403. doi: 10.1093/NAR/GKAA1106

72. Aiswarya A, Suresh R, Janardhanan M, Savithri V, Aravind T, Mathew L. An immunohistochemical evaluation of podoplanin expression in oral leukoplakia and oral squamous cell carcinoma to explore its potential to be used as a predictor for malignant transformation. *J Oral Maxillofac Pathol.* (2019) 23:159–60. doi: 10.4103/jomfp.JOMFP_272_17
73. Logeswari J, Malathi N, Thamizhchelvan H, Sangeetha N, Nirmala S. Expression of podoplanin in oral premalignant and malignant lesions and its potential as a biomarker. *Indian J Dent Res.* (2014) 25(3):305–10. doi: 10.4103/0970-9290.138321
74. Patil A, Patil K, Tupsakhare S, Gabhane M, Sonune S, Kandalgaonkar S. Evaluation of podoplanin in oral leukoplakia and oral squamous cell carcinoma. *Scientifica (Cairo).* (2015) 2015:1–6. doi: 10.1155/2015/135298
75. Kawaguchi H, El-Naggar AK, Papadimitrakopoulou V, Ren H, Fan YH, Feng L, et al. Podoplanin: a novel marker for oral cancer risk in patients with oral premalignancy. *J Clin Oncol.* (2008) 26:354–60. doi: 10.1200/JCO.2007.13.4072
76. Deepthi G, Nandan SRK, Kulkarni PG. Salivary tumour necrosis factor- α as a biomarker in oral leukoplakia and oral squamous cell carcinoma. *Asian Pac J Cancer Prev.* (2019) 20:2087–93. doi: 10.31557/APJCP.2019.20.7.2087
77. Shamseer L, Moher D, Clarke M, Ghersi D, Liberati A, Petticrew M, et al. Preferred reporting items for systematic review and meta-analysis protocols (PRISMA-P) 2015: elaboration and explanation OPEN ACCESS. *Br Med J.* (2015). doi: 10.1136/bmj.g7647