



OPEN ACCESS

EDITED AND REVIEWED BY
Olivier Feron,
Université catholique de Louvain, Belgium

*CORRESPONDENCE
Junyi Chen
✉ chenjunyidoctor@163.com

[†]These authors have contributed equally to this work

RECEIVED 25 September 2024
ACCEPTED 27 October 2024
PUBLISHED 25 November 2024

CITATION

Chen J, Wang F, Xu H, Xu L, Chen D, Wang J, Huang S, Wen Y and Fang L (2024) Corrigendum: Long non-coding RNA SNHG1 regulates the Wnt/ β -catenin and PI3K/AKT/mTOR signaling pathways via EZH2 to affect the proliferation, apoptosis, and autophagy of prostate cancer cell. *Front. Oncol.* 14:1501882. doi: 10.3389/fonc.2024.1501882

COPYRIGHT

© 2024 Chen, Wang, Xu, Xu, Chen, Wang, Huang, Wen and Fang. This is an open-access article distributed under the terms of the [Creative Commons Attribution License \(CC BY\)](https://creativecommons.org/licenses/by/4.0/). The use, distribution or reproduction in other forums is permitted, provided the original author(s) and the copyright owner(s) are credited and that the original publication in this journal is cited, in accordance with accepted academic practice. No use, distribution or reproduction is permitted which does not comply with these terms.

Corrigendum: Long non-coding RNA SNHG1 regulates the Wnt/ β -catenin and PI3K/AKT/mTOR signaling pathways via EZH2 to affect the proliferation, apoptosis, and autophagy of prostate cancer cell

Junyi Chen^{1†}, Fubo Wang^{2†}, Huan Xu², Lingfan Xu³, Dong Chen¹, Jialiang Wang¹, Sihuai Huang¹, Yiqun Wen¹ and Longmin Fang¹

¹Department of Urology, The Second Affiliated Hospital of Fujian Medical University, Quanzhou, China, ²Department of Urology, Shanghai Changhai Hospital, Naval Medical University, Shanghai, China, ³Department of Urology, The First Affiliated Hospital of Anhui Medical University, Hefei, China

KEYWORDS

prostate cancer, long-chain non-coding RNA, cell viability, apoptosis, autophagy

A Corrigendum on

Long non-coding RNA SNHG1 regulates the Wnt/ β -catenin and PI3K/AKT/mTOR signaling pathways via EZH2 to affect the proliferation, apoptosis, and autophagy of prostate cancer cell

By Chen J, Wang F, Xu H, Xu L, Chen D, Wang J, Huang S, Wen Y and Fang L (2020). *Front. Oncol.* 10:552907. doi: 10.3389/fonc.2020.552907

In the published article, there was an error in [Figures 4, 5](#) as published. Due to the failure to replace the latest figures during repair and the proof not being thoroughly checked, errors were found in [Figures 4, 5](#). The corrected [Figures 4, 5](#) and its caption appear below.

The authors apologize for this error and state that this does not change the scientific conclusions of the article in any way. The original article has been updated.

Publisher’s note

All claims expressed in this article are solely those of the authors and do not necessarily represent those of their affiliated

organizations, or those of the publisher, the editors and the reviewers. Any product that may be evaluated in this article, or claim that may be made by its manufacturer, is not guaranteed or endorsed by the publisher.

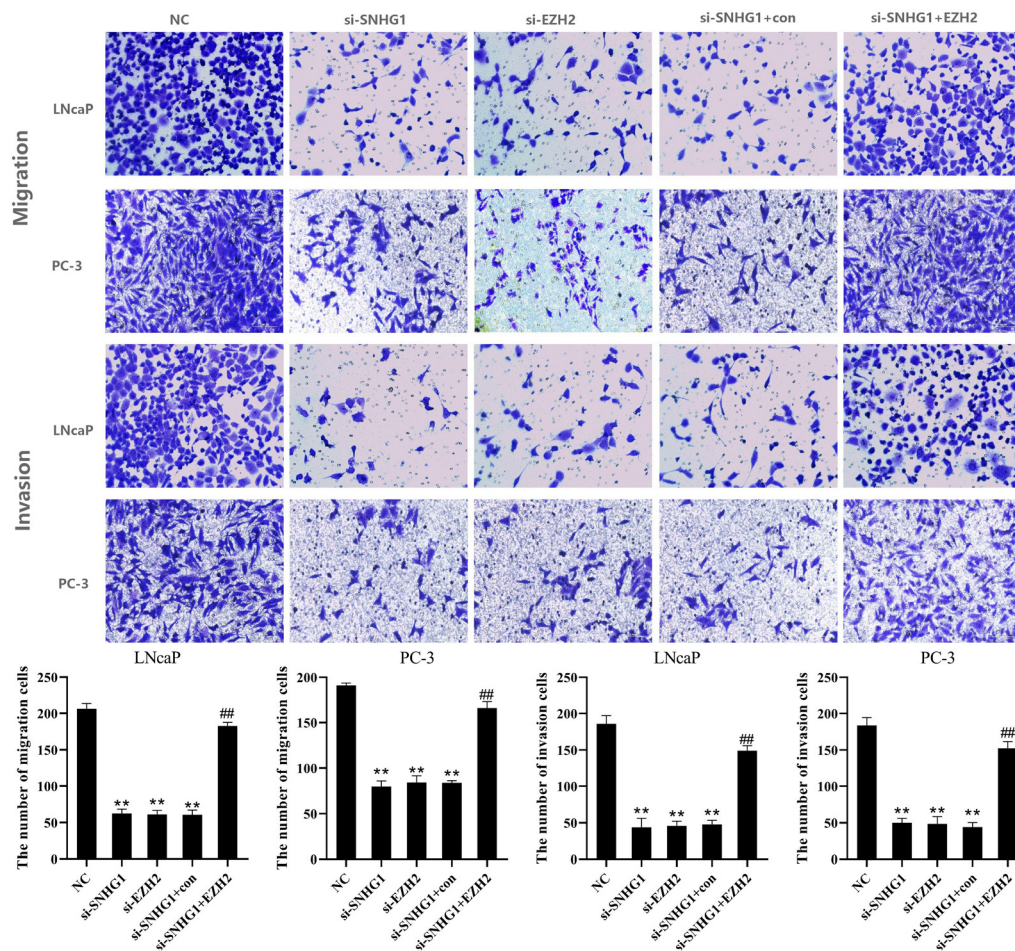


FIGURE 4 Regulatory effect of SNHG1 on the migration and invasion of PCa cells by targeting EZH2. Transwell assay detected the migration and invasion of LNCaP and PC3 cells transfected with NC, si-SNHG1, si-EZH2, si-SNHG1+con, si-SNHG1+EZH2. **P < 0.01 vs. NC group; ##P < 0.01 vs. si-SNHG1 + con group.

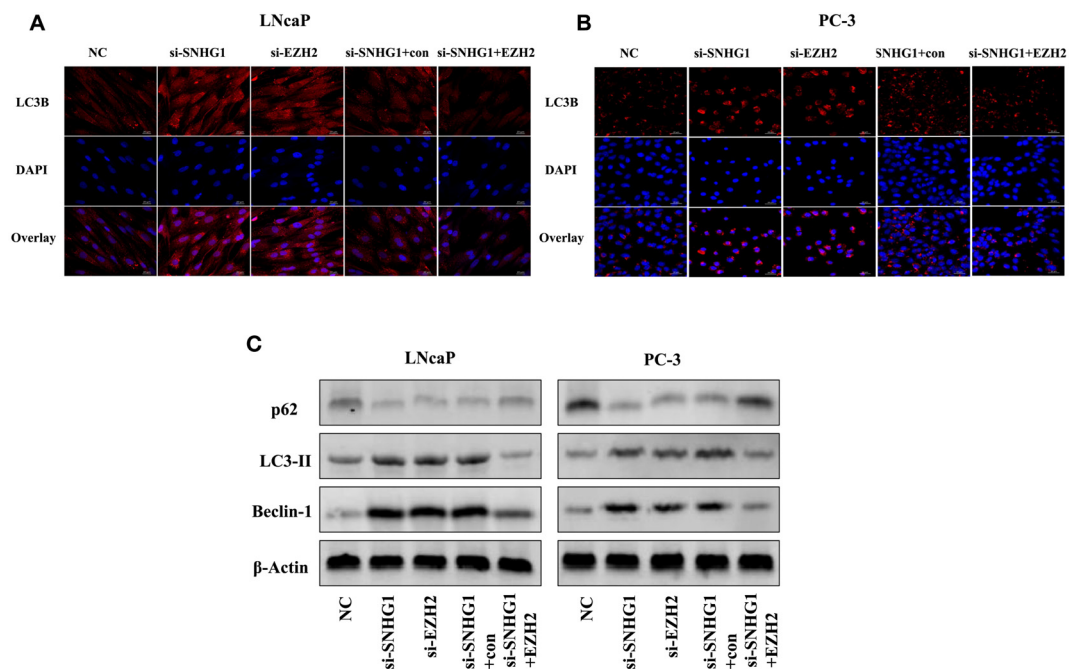


FIGURE 5

Effect of SNHG1 binding EZH2 on autophagy in LNCaP and PC-3 cells. (A, B) Immunofluorescence staining detected the formation of the LC3 spots with the interference of SNHG1 in LNCaP and PC3 cells and the down-regulation of EZH2 or the interference of SNHG1 and simultaneous overexpression of EZH2. (C) Western blot detected the expression level of autophagy-related proteins LC3-II, Beclin-1 and P62 protein in LNCaP and PC3 cells transfected with NC, si-SNHG1, si-EZH2, si-SNHG1+con, si-SNHG1+EZH2.