



OPEN ACCESS

EDITED BY

Sani Haider Kizilbash,
Mayo Clinic, United States

REVIEWED BY

Antonio Silvani,
IRCCS Carlo Besta Neurological Institute
Foundation, Italy
Aleksandra Gruslova,
The University of Texas Health Science
Center at San Antonio, United States

*CORRESPONDENCE

Gregory B. Biedermann
✉ biedermann@health.missouri.edu

RECEIVED 06 June 2024

ACCEPTED 23 July 2024

PUBLISHED 22 August 2024

CITATION

Biedermann GB, Merrifield K and Lustgarten L
(2024) Case report: Safety of Tumor Treating
Fields therapy with an implantable cardiac
pacemaker in a patient with glioblastoma.
Front. Oncol. 14:1441146.
doi: 10.3389/fonc.2024.1441146

COPYRIGHT

© 2024 Biedermann, Merrifield and Lustgarten.
This is an open-access article distributed under
the terms of the [Creative Commons Attribution
License \(CC BY\)](https://creativecommons.org/licenses/by/4.0/). The use, distribution or
reproduction in other forums is permitted,
provided the original author(s) and the
copyright owner(s) are credited and that the
original publication in this journal is cited, in
accordance with accepted academic
practice. No use, distribution or reproduction
is permitted which does not comply with
these terms.

Case report: Safety of Tumor Treating Fields therapy with an implantable cardiac pacemaker in a patient with glioblastoma

Gregory B. Biedermann^{1*}, Kathleen Merrifield²
and Leonardo Lustgarten³

¹Department of Radiation Oncology, University of Missouri, Columbia, MO, United States,

²Department of Global Medical Safety, Novocure Inc., New York, NY, United States,

³Department of Medical Affairs, Novocure Inc., New York, NY, United States

Tumor Treating Fields (TTFields) therapy is an anti-cancer treatment modality that is delivered noninvasively to the tumor site via skin-placed arrays. The therapy is US Food and Drug Administration (FDA) approved and Conformité Européenne (CE) marked for adults with newly diagnosed and recurrent glioblastoma (GBM) (grade 4 glioma in the European Union). To date, there are limited data on the safety and efficacy of TTFields therapy in patients with implanted cardiac pacemakers. Herein, we report a case of a 79-year-old male patient with GBM receiving TTFields therapy with a prior medical history of cardiac events necessitating a cardiac pacemaker. The patient presented to the emergency department in May 2021 with newly onset left-sided weakness along with seizures. Based on an initial evaluation and results of the initial computed tomography (CT) scans (May 2021), the patient was clinically diagnosed with a high-grade glioma which was later confirmed as *IDH* wildtype following a biopsy. He was treated with radiotherapy (40 Gy in 15 fractions), followed by adjuvant temozolomide (TMZ) (75 mg/m²). TTFields therapy was initiated alongside maintenance TMZ (150 mg/m²). Average TTFields therapy usage was 67% throughout the duration of treatment. Follow-up CT scans (February and May of 2022) indicated stable disease. CT scans in August 2022 showed an increase in size of a mass with heterogeneous contrast enhancement and the patient subsequently passed away in October 2022. The patient's last cardiac tests demonstrated that the pacemaker was operational with adequate cardiac function. This report suggests that TTFields therapy concomitant with an implanted electronic device may be safe in patients with GBM.

KEYWORDS

TTFields therapy, Optune-Gio, cardiac pacemaker, glioblastoma, safety, active implantable medical device

1 Introduction

Glioma is the most common primary malignant brain tumor with approximately 100,000 people diagnosed annually worldwide (1). Glioblastoma (GBM) remains the most challenging brain tumor with the lowest survival rates due to insufficient response to conventional combined therapy (2–4).

Tumor Treating Fields (TTFields) therapy is a noninvasive, loco-regionally applied, anti-cancer treatment modality US Food and Drug Administration (FDA) approved for adults with newly diagnosed and recurrent GBM and Conformité Européenne (CE) marked for grade 4 glioma in Europe (5–8). Alternating TTFields therapy with temozolomide (TMZ; concurrent and adjuvant) and standard radiotherapy is a Category 1, preferred treatment recommendation for newly diagnosed GBM in the National Comprehensive Cancer Network Clinical Practice Guidelines in Oncology (NCCN Guidelines[®]) for Central Nervous System Cancers Version 1.2023 (9). TTFields are low intensity intermediate frequency, alternating electric fields generated by a portable medical device (Figure 1), and are delivered noninvasively to the tumor site via arrays placed on the skin. The electric fields act selectively on cancer cells due to their unique properties and exert physical forces to disrupt cellular processes crucial for cell viability and progression (10–12).

The first approval for TTFields therapy was granted by the FDA in 2011 for the treatment of recurrent GBM, following the results of the randomized, pivotal (phase 3) EF-11 clinical study (NCT00379470). EF-11 demonstrated comparable efficacy

outcomes and improved quality of life with TTFields therapy compared with physician's best choice of chemotherapy (8). TTFields therapy had a tolerable safety profile with low device-associated systemic toxicity, and most common adverse events (AEs) were localized, mostly resolvable, mild-to-moderate skin reactions (8). In 2015, additional approval was granted based on results of the randomized, pivotal (phase 3) EF-14 clinical study (NCT00916409) for TTFields therapy in newly diagnosed GBM with maintenance TMZ after standard chemoradiation (7, 13). EF-14 demonstrated statistically significant improvement in overall survival and long-term (5-year) survival versus TMZ alone (7, 13). Similar to EF-11, there was no added systemic toxicity associated with TTFields therapy, and the most common device-associated AEs were localized, mild-to-moderate skin reactions (7, 13). TTFields therapy usage has been shown to positively correlate with increased survival outcomes (14, 15). Therefore, in order to obtain maximum efficacy benefit, it is recommended that the TTFields device is worn for at least 18 hours per day ($\geq 75\%$ daily usage) (6, 14, 15).

Patients with GBM and cardiac comorbidities requiring a cardiac pacemaker often represent challenges for the treating physician. When treating such patients, it is important to ensure the continued functionality of the pacemaker, as well as address other comorbidities that can further complicate a patient's treatment (5). Current regulatory labeling provides guidance to avoid TTFields therapy use in patients who have active implantable medical devices (AIMD) such as pacemakers, defibrillators, deep brain stimulators, spinal cord stimulators, or programmable



ventriculoperitoneal shunts due to insufficient data regarding potential interference with the function of an AIMD (6, 16). As there is limited data on the concomitant use of TTFields therapy with AIMDs in patients with GBM, further research is needed to assess safety and tolerability in this patient population.

Here, we present the case of a 79-year-old male patient with GBM and a cardiac pacemaker receiving TTFields therapy. The uniqueness of this case is the provision of important safety information on the daily clinical application of TTFields therapy to a patient with GBM and an implanted cardiac pacemaker. Written informed consent was obtained from the patient's next of kin for the publication of their medical case and accompanying images.

2 Case report

We report the case of a 79-year-old male patient with GBM with a prior medical history of cardiac and metabolic events (coronary artery bypass graft surgeries, multiple stents, atrial fibrillation, hypertension, hyperlipidemia, and type 2 diabetes). A full timeline of the episode of care is shown in [Supplementary Figure 1](#). The patient had a dual chamber Boston Scientific cardiac pacemaker placed in 2014 at the age of 72 years, for symptomatic sinus node dysfunction with chronotropic

intolerance. He also harbored a significant history of cancer, with an atypical melanocytic proliferation in the left iris consistent with uveal melanoma, which was excised in February 2020, with no known recurrence.

In May of 2021, the patient presented to the emergency department with new onset left-sided weakness along with seizures. Upon admission, his initial computed tomography (CT) scans revealed a right-sided temporal lobe mass (4.7 x 3.4 x 3.5 cm) suggestive of malignancy ([Figure 2A](#)) and he underwent a right temporal craniotomy for subtotal tumor resection ([Figure 2B](#)). The frozen specimen was consistent with GBM, and the final pathology confirmed a World Health Organization grade 4 GBM (2021 classification; [Figures 3A–C](#)). Molecular profiling revealed the tumor to be *IDH* wildtype ([Table 1](#)).

Following diagnosis, the patient was treated with hypofractionated intensity-modulated radiotherapy (40 Gy in 15 fractions), which was completed in June 2021, along with concurrent daily TMZ at a dose of 75 mg/m². TTFields therapy was initiated in August 2021 with maintenance TMZ (150 mg/m², administered on day 1–5 of each 28-day cycle). TMZ was continued until January 2022. The patient continued to receive TTFields therapy until August 18, 2022, with decreasing overall daily usage over time.

Follow-up CT scans in February ([Figure 2C](#)) and May ([Figure 2D](#)) of 2022 were indicative of stable disease. The

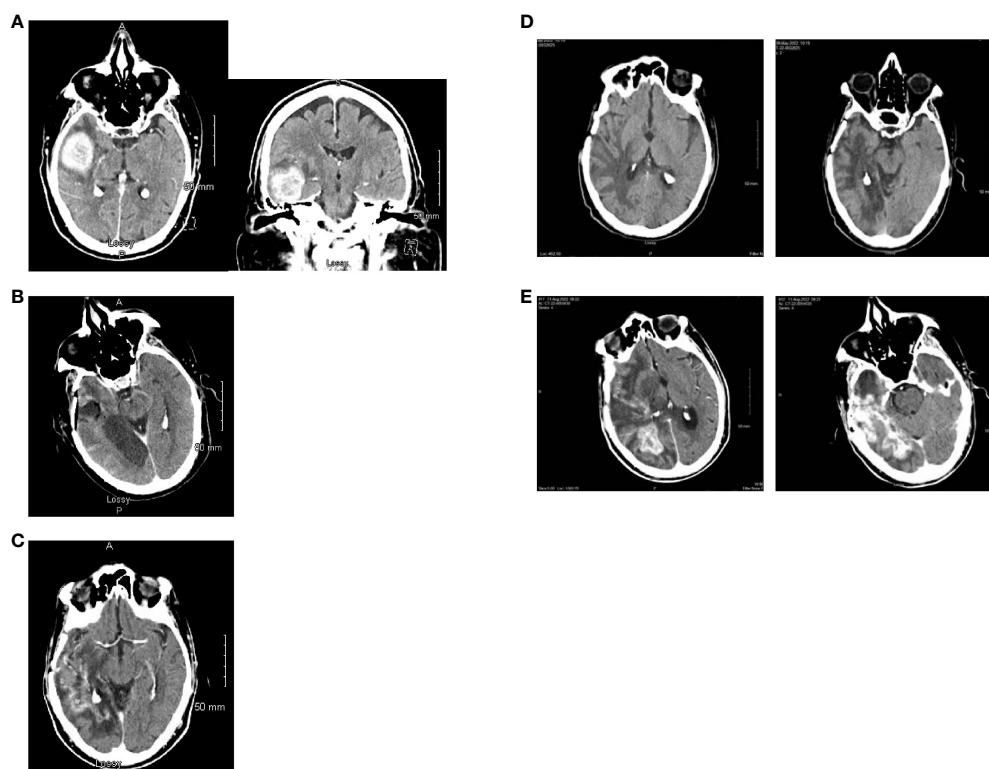


FIGURE 2

Computed tomography scan images. **(A)** Axial and coronal views at the time of initial diagnosis (May 2021) showing an avidly enhancing intra-axial mass in the right temporal lobe (maximal dimensions of 4.7 x 3.4 x 3.5 cm) with moderate surrounding vasogenic edema. **(B)** Post-operative axial computed tomography (May 2021). **(C)** Axial view with contrast enhancement while on treatment with Tumor Treating Fields (February 2022) showing stable disease. **(D)** Two slices of CT Axial views while on treatment with Tumor Treating Fields (May 2022) showing stable disease. No evidence of tumor is noted. **(E)** Two different level slices of CT Axial views. There is heterogenous and irregular contrast enhancement extending to the posterior right temporal lobe with vasogenic edema consistent with recurrence (August 2022).

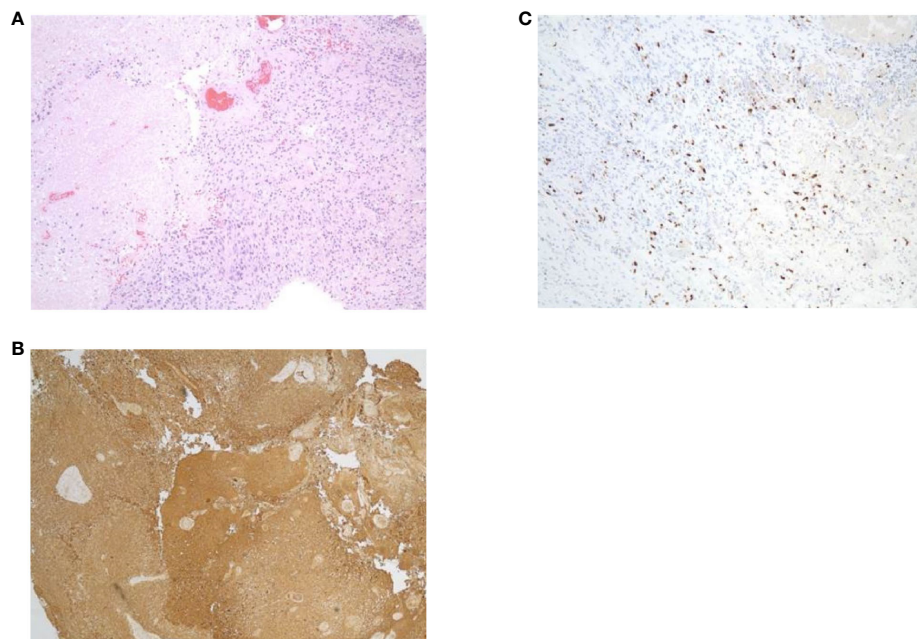


FIGURE 3
Specimens from pathology report. (A) Hematoxylin and eosin staining. (B) Glial fibrillary acidic protein. (C) Ki67.

following CT scan in August 2022 (Figure 2E) revealed a significant increase in size of heterogeneously enhancing mass within the right temporal occipital lobe with surrounding vasogenic edema (11 mm left midline shift and mild right subfalcine herniation). Subsequently, the patient entered hospice care, and passed away in October 2022. The last pacemaker diagnostic report in October 2022 demonstrated overall adequate function of the pacemaker, with no evidence of malfunction. The patient's last echocardiogram was conducted in May 2021 and showed a left ventricular ejection fraction of 50–55%, normal wall motion, and aortic sclerosis.

Total duration of TTFields therapy was 373 days with an average usage of 67% (range: 50–86%) over the entirety of treatment. In the months following therapy initiation (August–December 2021), daily usage ranged from 70–86%. In January of 2022, daily usage decreased to 60–65% due to skin irritation. During the final months of TTFields therapy (March–August 2022), average usage was approximately 50% and was well tolerated.

TABLE 1 Tumor molecular pathology at diagnosis.

Parameter	Result
<i>IDH1</i> <i>R132H</i> immunohistochemistry	Negative for mutation
<i>IDH1/2</i> sequencing	Negative for targeted mutations
<i>ATRX</i>	Retained expression
<i>p53</i>	Increased expression in infrequent tumor nuclei
<i>Ki67</i> proliferation index	15% (focal)
<i>MGMT</i> promoter	Indeterminate methylation result

TTFields therapy was eventually discontinued in August of 2022, per patient request to switch from active therapy to palliative care upon a decline in overall neurological function due to disease progression.

3 Discussion

AIMD, including pacemakers, are known to be susceptible to interference from electromagnetic fields. As both TTFields therapy and cardiac pacemakers work under the electromagnetic spectrum, it is not surprising there is concern among clinicians regarding their simultaneous clinical use.

TTFields therapy utilizes electric fields in a frequency range of 100–500 kHz, a range which is too high to stimulate muscle/nerve tissue and too low to have ionizing or significant heating effects (12, 17). The fields act via a multimodal mechanism of action, mainly by the application of electrical forces on charged polar components within cancer cells, thereby disrupting biological processes that are essential for cell viability and function (12, 18–22). The frequency of the fields is unique to the type of cancer cell being targeted, and they act selectively on cancer cells, without affecting the function of healthy cells (23). TTFields are electric fields and, although the therapy generates a low-level magnetic field, it is negligible (24) and not expected to have a relevant impact on AIMDs. Patients with AIMDs have been excluded from previous studies evaluating the safety and efficacy of TTFields therapy.

Cardiac pacemakers are capacitors where electric charge is stored at a potential of about 90 mV (25). They release electrical pulses that last 0.5–25 ms with a voltage of 0.1–15 volts at a

frequency of up to 300 pulses per minute (5 Hz). The pacemaker takes measurements of the voltage (millivolts) generated by the heart when the heart contracts and sends electrical currents (milliamp) to set the pace of the heart. Pacemakers are typically categorized as external (temporary) or internal (implantable), with internal pacemakers usually being permanent and significantly more complex. It is estimated that 500,000–3,000,000 people in the United States have an implanted cardiac pacemaker, the majority of whom are >65 years old (25). This is precisely the typical age group where GBMs are most frequent (26). With an aging population and increasing life expectancy, the number of patients with GBM with cardiac pacemakers is expected to increase in the future, making it more prudent to explore the feasibility of TTFields and cardiac pacemakers.

Despite recent advances in systemic and targeted treatment options for GBM, there remains a significant unmet need for novel therapeutic options to improve survival in this difficult-to-treat patient population (27). TTFields therapy has demonstrated efficacy and safety data in patients with recurrent GBM (8) and newly diagnosed GBMs (7, 13, 15). The EF-14 study (newly diagnosed GBM; NCT00916409) demonstrated significant improvements in progression-free survival (6.7 months vs 4.0 months) and overall survival (20.9 months vs 16.0 months) for TTFields therapy concomitant with TMZ compared with TMZ alone, respectively (7). Five-year overall survival rates were significantly higher with TTFields therapy concomitant with TMZ compared with TMZ alone (5% vs 13%; $p = 0.04$) (7). TTFields also demonstrated comparable efficacy and favored toxicity and quality of life in the EF-11 study, which compared TTFields therapy with the best standard of care in patients with recurrent GBM (7). Clinical and real-world data demonstrate that TTFields therapy has a favorable safety profile, most commonly characterized as dermatologic AEs, with a low risk of device-related systemic AEs compared with chemotherapeutic regimens (7, 8, 28, 29).

As there is limited information on the potential interference between TTFields and AIMDs, current regulatory guidance advises against the use of TTFields therapy in patients who have AIMDs (6, 16). In this context, the current case study provides a valuable preliminary insight into the feasibility of TTFields therapy in a patient with GBM and a cardiac pacemaker. The patient in this case study had a dual chamber Boston Scientific cardiac pacemaker *in situ* for approximately 7 years prior to initiating TTFields therapy in August 2021. Importantly, no adverse influence on the overall function of the pacemaker was detected during the 12 months of TTFields therapy use.

The current findings on the lack of impact of TTFields therapy on pacemaker function are supported by recent reports in patients with GBM which also did not detect any interference between TTFields and AIMDs (28–32). In a post-market surveillance safety data study, there were no malfunctions reported among 49 patients who had non-programmable shunts ($n = 44$), pacemakers/defibrillators ($n = 3$) or programmable shunts ($n = 2$) (30). Similarly, a review of the clinical information for patients with GBM treated with TTFields in the US between November 2011 and June 2017 identified 50 patients with non-programmable shunts, five with programmable shunts, and five

with pacemakers/defibrillators (31). The safety data obtained during post-marketing surveillance for all 60 patients were analyzed and did not reveal any new safety concerns on concurrent use of TTFields therapy with implanted devices (31). Furthermore, no arrhythmia or other cardiac AEs in the five patients with pacemakers/defibrillators was detected (31). An additional post-marketing safety study from November 2012–April 2021 with data including 156 patients with GBM who had implanted ventriculoperitoneal shunts (programmable and non-programmable) found that TTFields therapy was safe and did not interfere with effectiveness of the patient's ventriculoperitoneal shunts (33). Real world data from a reported registry (PriDe registry) and several large retrospective studies of >25,000 patients with GBM (recurrent and newly diagnosed GBM) spanning more than a decade showed a consistent safety profile across various subgroups (including geriatric populations) (28, 29, 32). As expected, this real-world evidence included “off label” use of TTFields under different scenarios (e.g., in pediatric populations) without evidence of any new safety warning signals, which would have been captured by post-market safety surveillance.

The interpretation of case studies is limited as they represent an individual patient's experience only, and the findings may not always be generalizable to broader patient populations. However, this case report represents a fairly typical real-world case of an elderly male patient with GBM, *IDH* wildtype (which is representative of approximately 90% of GBMs) (34), and significant comorbidities requiring an AIMD. This patient experienced a good response to TTFields therapy (stable disease which progressed once TTFields therapy was stopped) despite lower than recommended usage of $\geq 75\%$ (16), and showed no clinical nor electrocardiographic signs of cardiac pacemaker malfunction while both devices were active concurrently.

The findings reported here, along with evidence from previously conducted retrospective studies, support the safety and feasibility of TTFields therapy among patients with GBM and AIMDs such as cardiac pacemakers. Prospective studies designed to specifically address the safety and efficacy of TTFields therapy in patients with AIMDs are feasible, but they present several challenges and considerations. Conversely, it may be more practical to evaluate cohorts of patients with AIMDs who are already enrolled in clinical studies as an exploratory endpoint. Clinical use of TTFields therapy in patients with AIMDs can be considered on a case-by-case basis by the treating clinician according to risk profiles of TTFields therapy use in patients with GBM.

4 Conclusion

Based on the case study reported here, concomitant use of TTFields therapy with an AIMD did not lead to any interference or malfunction, and the patient was able to derive benefit from both devices. Taken together with post-market safety and other real-world data, this suggests that the application of TTFields therapy may be safe among patients with GBM with implanted electronic devices such as cardiac pacemakers. These results warrant further

evaluation of the use of TTFields therapy among patients with GBM and implanted electronic devices, which constitute an important subgroup of patients that can significantly benefit from TTFields therapy.

Data availability statement

The original contributions presented in the study are included in the article/Supplementary Material. Further inquiries can be directed to the corresponding author.

Ethics statement

Written informed consent was not obtained from the individual(s) for the publication of any potentially identifiable images or data included in this article because the individual passed away. Written informed consent was obtained from the individual's next of kin for the publication of any potentially identifiable images or data included in this article.

Author contributions

GB: Conceptualization, Data curation, Formal analysis, Investigation, Methodology, Project administration, Resources, Software, Supervision, Validation, Visualization, Writing – original draft, Writing – review & editing. KM: Conceptualization, Data curation, Formal analysis, Investigation, Methodology, Project administration, Resources, Software, Supervision, Validation, Visualization, Writing – original draft, Writing – review & editing. LL: Conceptualization, Data curation, Formal analysis, Investigation, Methodology, Project administration, Resources, Software, Supervision, Validation, Visualization, Writing – original draft, Writing – review & editing.

Funding

The author(s) declare financial support was received for the research, authorship, and/or publication of this article. Medical

writing support under the direction of the authors was funded by Novocure Inc.

Acknowledgments

The authors would like to thank the patient, his family and all investigators involved in this study. Medical writing support under the direction of the authors was provided by Elena Palmesino, PhD, Global Scientific Exchange of Global Medical Affairs, Novocure GmbH, Switzerland, Huda Ismail Abdullah, PhD, BCMAS formerly of Global Medical Affairs, Novocure Inc, New York, NY, USA and Bassaam Mulk, PharmD of Alpha (a division of Prime, Knutsford, UK) and was supported by Novocure Inc according to Good Publication Practice guidelines (Link).

Conflict of interest

Authors KM and LL were employed by the company Novocure. The remaining authors declare that the research was conducted in the absence of any commercial or financial relationships that could be construed as a potential conflict of interest.

The authors declare that this study received funding from Novocure. The funder had the following involvement in the study: funding of medical writing support.

Publisher's note

All claims expressed in this article are solely those of the authors and do not necessarily represent those of their affiliated organizations, or those of the publisher, the editors and the reviewers. Any product that may be evaluated in this article, or claim that may be made by its manufacturer, is not guaranteed or endorsed by the publisher.

Supplementary material

The Supplementary Material for this article can be found online at: <https://www.frontiersin.org/articles/10.3389/fonc.2024.1441146/full#supplementary-material>

References

1. Bray F, Ferlay J, Soerjomataram I, Siegel RL, Torre LA, Jemal A. Global cancer statistics 2018: GLOBOCAN estimates of incidence and mortality worldwide for 36 cancers in 185 countries. *CA Cancer J Clin.* (2018) 68:394–424. doi: 10.3322/caac.21492
2. Miller KD, Ostrom QT, Kruchko C, Patil N, Tihan T, Cioffi G, et al. Brain and other central nervous system tumor statistics, 2021. *CA Cancer J Clin.* (2021) 71:381–406. doi: 10.3322/caac.21693
3. Sheikh S, Radivoyevitch T, Barnholtz-Sloan JS, Vogelbaum M. Long-term trends in glioblastoma survival: implications for historical control groups in clinical trials. *Neurooncol Pract.* (2020) 7:158–63. doi: 10.1093/nop/npz046
4. Ostrom QT, Patil N, Cioffi G, Waite K, Kruchko C, Barnholtz-Sloan JS. CBTRUS statistical report: primary brain and other central nervous system tumors diagnosed in the United States in 2013–2017. *Neuro Oncol.* (2020) 22:iv1–iv96. doi: 10.1093/neuonc/noaa200
5. Novocure. Optune®: instructions for use (2019). Available online at: https://cms-admin.optunegio.com/sites/patient/files/2023-11/Optune_IFU.pdf (Accessed March 1).
6. Novocure. Novocure Receives CE Mark for NovoTTFF-100L™ System (2020). Available online at: <https://www.novocure.com/novocure-receives-ce-mark-for-novottf-100l-system/> (Accessed February 1).

7. Stupp R, Taillibert S, Kanner A, Read W, Steinberg D, Lhermitte B, et al. Effect of Tumor-Treating Fields plus maintenance temozolomide vs maintenance temozolomide alone on survival in patients with glioblastoma: a randomized clinical trial. *JAMA*. (2017) 318:2306–16. doi: 10.1001/jama.2017.18718
8. Stupp R, Wong ET, Kanner AA, Steinberg D, Engelhard H, Heidecke V, et al. NovoTTF-100A versus physician's choice chemotherapy in recurrent glioblastoma: a randomised phase III trial of a novel treatment modality. *Eur J Cancer*. (2012) 48:2192–202. doi: 10.1016/j.ejca.2012.04.011
9. National Comprehensive Cancer Network. Referenced with permission from the NCCN Clinical Practice Guidelines in Oncology (NCCN Guidelines®) for Central Nervous System Cancers V.1.2023. © National Comprehensive Cancer Network, Inc. 2023 (2023). Available online at: <https://www.nccn.org/guidelines/guidelines-detail?category=1&id=1425> (Accessed April 8, 2024).
10. Kirson ED, Gurvich Z, Schneiderman R, Dekel E, Itzhaki A, Wasserman Y, et al. Disruption of cancer cell replication by alternating electric fields. *Cancer Res*. (2004) 64:3288–95. doi: 10.1158/0008-5472.CAN-04-0083
11. Voloshin T, Schneiderman RS, Volodin A, Shamir RR, Kaynan N, Zeevi E, et al. Tumor Treating Fields (TTFields) hinder cancer cell motility through regulation of microtubule and actin dynamics. *Cancers (Basel)*. (2020) 12:3016. doi: 10.3390/cancers12103016
12. Karanam NK, Story MD. An overview of potential novel mechanisms of action underlying Tumor Treating Fields-induced cancer cell death and their clinical implications. *Int J Radiat Biol*. (2021) 97:1044–54. doi: 10.1080/09553002.2020.1837984
13. Stupp R, Taillibert S, Kanner AA, Kesari S, Steinberg DM, Toms SA, et al. Maintenance therapy with tumor-treating fields plus temozolomide vs temozolomide alone for glioblastoma: a randomized clinical trial. *JAMA*. (2015) 314:2535–43. doi: 10.1001/jama.2015.16669
14. Toms SA, Kim CY, Nicholas G, Ram Z. Increased compliance with tumor treating fields therapy is prognostic for improved survival in the treatment of glioblastoma: a subgroup analysis of the EF-14 phase III trial. *J Neurooncol*. (2019) 141:467–73. doi: 10.1007/s11060-018-03057-z
15. Ballo MT, Conlon P, Lavy-Shahaf G, Kinzel A, Vymazal J, Rulseh AM. Association of Tumor Treating Fields (TTFields) therapy with survival in newly diagnosed glioblastoma: a systematic review and meta-analysis. *J Neurooncol*. (2023) 164:1–9. doi: 10.1007/s11060-023-04348-w
16. US Food and Drug Administration. Optune™ (formerly NovoTTF-100A™ System) Summary of Safety and Effectiveness Data (SSED) (2015). Available online at: https://www.accessdata.fda.gov/cdrh_docs/pdf10/P100034S013b.pdf (Accessed October 11).
17. Wenger C, Giladi M, Bomzon Z, Salvador R, Bassar PJ, Miranda PC. (2015). Modeling Tumor Treating Fields (TTFields) application in single cells during metaphase and telophase, in: *Conf Proc IEEE Eng Med Biol Soc*, Vol. 2015. pp. 6892–5. doi: 10.1109/EMBC.2015.7319977
18. Cooper GM. The development and causes of cancer. In: *The Cell: A Molecular Approach, 2nd Edition*. Sinauer Associates, Sunderland MA (2000).
19. Baba AI, Cătoi C. Tumor cell morphology. In: *Comparative Oncology*. The Publishing House of the Romanian Academy, Bucharest, RO (2007).
20. Trainito CI, Sweeney DC, Cemazar J, Schmelz EM, Francais O, Le Pioufle B, et al. Characterization of sequentially-staged cancer cells using electrorotation. *PLoS One*. (2019) 14:e0222289. doi: 10.1371/journal.pone.0222289
21. Haemmerich D, Schutt DJ, Wright AW, Webster JG, Mahvi DM. Electrical conductivity measurement of excised human metastatic liver tumours before and after thermal ablation. *Physiol measurement*. (2009) 30:459–66. doi: 10.1088/0967-3334/30/5/003
22. Ahmad MA, Natour ZA, Mustafa F, Rizvi TA. Electrical characterization of normal and cancer cells. *IEEE Access*. (2018) 6:25979–86. doi: 10.1109/ACCESS.2018.2830883
23. Kirson ED, Dbaly V, Tovaryš F, Vymazal J, Soustiel JF, Itzhaki A, et al. Alternating electric fields arrest cell proliferation in animal tumor models and human brain tumors. *Proc Natl Acad Sci United States America*. (2007) 104:10152–7. doi: 10.1073/pnas.0702916104
24. Jones TH, Song JW, Abushahin L. Tumor treating fields: An emerging treatment modality for thoracic and abdominal cavity cancers. *Transl Oncol*. (2022) 15:101296. doi: 10.1016/j.tranon.2021.101296
25. Puette JA, Malek R, Ellison MB. *Pacemaker*. Treasure Island (FL: StatPearls Publishing (2023)).
26. Ostrom QT, Price M, Neff C, Cioffi G, Waite KA, Kruchko C, et al. CBTRUS statistical report: primary brain and other central nervous system tumors diagnosed in the United States in 2015–2019. *Neuro Oncol*. (2022) 24:v1–v95. doi: 10.1093/neuonc/noac202
27. Schaff LR, Mellinghoff IK. Glioblastoma and other primary brain malignancies in adults: A review. *JAMA*. (2023) 329:574–87. doi: 10.1001/jama.2023.0023
28. Mrugala MM, Engelhard HH, Dinh Tran D, Kew Y, Cavaliere R, Villano JL, et al. Clinical practice experience with NovoTTF-100A™ system for glioblastoma: the Patient Registry Dataset (PRiDe). *Semin Oncol*. (2014) 41:S4–S13. doi: 10.1053/j.seminoncol.2014.09.010
29. Shi W, Blumenthal DT, Oberheim Bush NA, Kebir S, Lukas RV, Muragaki Y, et al. Global post-marketing safety surveillance of Tumor Treating Fields (TTFields) in patients with high-grade glioma in clinical practice. *J Neurooncol*. (2020) 148:489–500. doi: 10.1007/s11060-020-03540-6
30. Ashby L, Hasselle M, Chowdhary S, Fathallah-Shaykh H, Zhu JJ. ATCT-04: Retrospective analysis of Tumor Treating fields (TTFields) in adults with glioblastoma: safety profile of the Optune™ medical device in patients with implanted non-programmable shunts, programmable shunts, and pacemakers/defibrillators. *Neuro Oncol*. (2015) 17:v1. doi: 10.1093/neuonc/nov206.04
31. Kew Y, Demopoulos A, Oberheim-Bush NA, Zhu JJ. ACTR-65. Safety profile of Tumor Treating Fields in adult glioblastoma patients with implanted non-programmable shunts, programmable shunts, and pacemakers/defibrillators: 6-year updated retrospective analysis of Optune® therapy. *Neuro Oncol*. (2017) 19:vi4–vi5. doi: 10.1093/neuonc/nox168.053
32. Mrugala MM, Shi W, Iwamoto F, Lukas RV, Palmer JD, Suh JH, et al. Global post-marketing safety surveillance of Tumor Treating Fields (TTFields) therapy in over 25,000 patients with CNS Malignancies treated between 2011–2022. *J Neurooncol*. (2024) 169(1):25–38. doi: 10.1007/s11060-024-04682-7
33. Oberheim-Bush NA, Shi W, McDermott MW, Grote A, Stindl J, Lustgarten L. The safety profile of Tumor Treating Fields (TTFields) therapy in glioblastoma patients with ventriculoperitoneal shunts. *J Neurooncol*. (2022) 158:453–61. doi: 10.1007/s11060-022-04033-4
34. Stoyanov GS, Lyutfi E, Georgieva R, Georgiev R, Dzhenkov DL, Petkova L, et al. Reclassification of glioblastoma multiforme according to the 2021 World Health Organization classification of central nervous system tumors: a single institution report and practical significance. *Cureus*. (2022) 14:e21822. doi: 10.7759/cureus.21822