



## OPEN ACCESS

EDITED AND REVIEWED BY  
Kirill Afonin,  
University of North Carolina at Charlotte,  
United States

## \*CORRESPONDENCE

Hyun-Ju An  
✉ yks486ahj@naver.com

†These authors have contributed equally to  
this work

RECEIVED 03 March 2024  
ACCEPTED 05 March 2024  
PUBLISHED 18 March 2024

## CITATION

Choi S, Lee S, Han Y-H, Choi J, Kim I, Lee J  
and An H-J (2024) Corrigendum: miR-31-3p  
functions as a tumor suppressor by directly  
targeting GABBR2 in prostate cancer.  
*Front. Oncol.* 14:1395244.  
doi: 10.3389/fonc.2024.1395244

## COPYRIGHT

© 2024 Choi, Lee, Han, Choi, Kim, Lee and An.  
This is an open-access article distributed under  
the terms of the [Creative Commons Attribution  
License \(CC BY\)](https://creativecommons.org/licenses/by/4.0/). The use, distribution or  
reproduction in other forums is permitted,  
provided the original author(s) and the  
copyright owner(s) are credited and that the  
original publication in this journal is cited, in  
accordance with accepted academic  
practice. No use, distribution or reproduction  
is permitted which does not comply with  
these terms.

# Corrigendum: miR-31-3p functions as a tumor suppressor by directly targeting GABBR2 in prostate cancer

Sujin Choi<sup>1†</sup>, Soonchul Lee<sup>1†</sup>, Young-Hoon Han<sup>2</sup>, Junwon Choi<sup>3</sup>,  
Isaac Kim<sup>4</sup>, Jusung Lee<sup>1</sup> and Hyun-Ju An<sup>1\*</sup>

<sup>1</sup>Department of Orthopaedic Surgery, CHA Bundang Medical Center, CHA University School of  
Medicine, Pangyo-ro, Republic of Korea, <sup>2</sup>Division of Radiation Cancer Research, Korea Institute of  
Radiological and Medical Sciences, Seoul, Republic of Korea, <sup>3</sup>Department of Molecular Science and  
Technology, Ajou University, Yeongtong-gu, Republic of Korea, <sup>4</sup>Department of General Surgery,  
CHA Bundang Medical Center, CHA University School of Medicine, Pangyo-ro, Republic of Korea

## KEYWORDS

miR-31-3p, GABBR2, prostate cancer, miRNA, tumor suppressor gene

## A corrigendum on

**miR-31-3p functions as a tumor suppressor by directly targeting  
GABBR2 in prostate cancer**

by Choi S, Lee S, Han Y-H, Choi J, Kim I, Lee J and An H-J (2022) *Front. Oncol.* 12:945057.  
doi: 10.3389/fonc.2022.945057

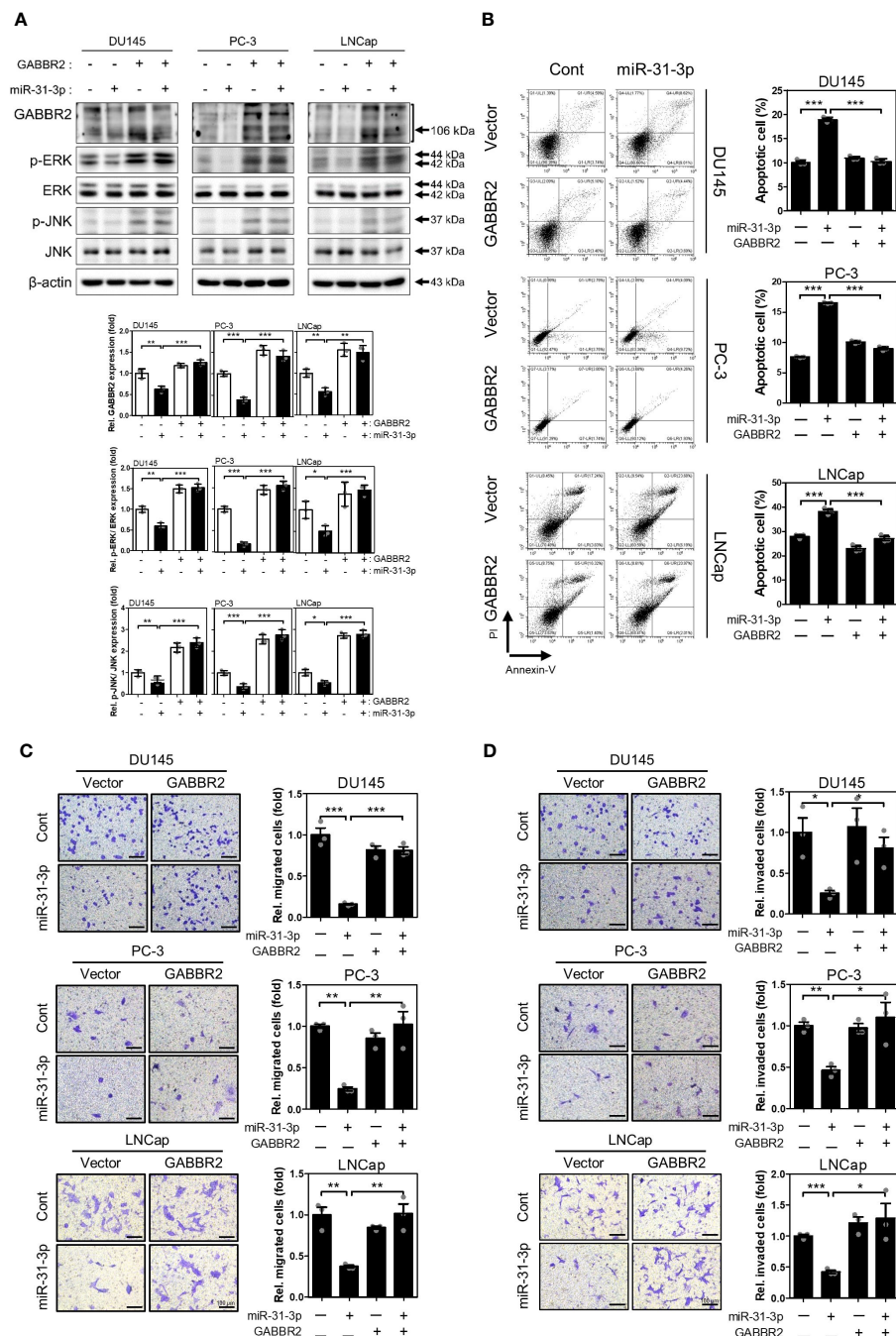
In the published article, there was a mistake in [Figure 4](#) as published. The image of LNCap co-transfected with empty vector and control miRNA in Panel C was mistakenly mixed up with the image of the LNCap co-transfected with GABBR2 vector and miR-31-3p in Panel D. The corrected [Figure 4](#) appears below.

The authors apologize for this error and state that this does not change the scientific conclusions of the article in any way. The original article has been updated.

**Publisher's note**

All claims expressed in this article are solely those of the authors and do not necessarily represent those of their affiliated

organizations, or those of the publisher, the editors and the reviewers. Any product that may be evaluated in this article, or claim that may be made by its manufacturer, is not guaranteed or endorsed by the publisher.



**FIGURE 4** miR-31-3p-induced tumor suppressive functions are associated with downregulation of GABBR2. **(A)** Restoration of GABBR2, p-ERK and p-JNK protein levels after ectopic expression of Myc-DDK-tagged-GABBR2. DU145, PC-3 and LNCap cells were transfected with a mixture of miR-31-3p (20 nM) and GABBR2 expression vector (4 μg). An unpaired two-tailed Student's t-test was used to calculate P values. Error bars represent mean ± SEM. \*P value < 0.05, \*\*P value < 0.01 and \*\*\*P value < 0.001 vs. Cont (n = 3). **(B)** Ectopic expression of GABBR2 suppresses miR-31-3p-induced apoptosis of DU145, PC-3, and LNCap cells. An unpaired two-tailed Student's t-test was used to calculate P values. Error bars represent mean ± SEM. \*\*\*P value < 0.001 vs. Cont (n = 3). **(C, D)** Ectopic expression of GABBR2 restores miR-31-3p-mediated inhibition of PC cell migration and invasion. An unpaired two-tailed Student's t-test was used to calculate P values. Error bars represent mean ± SEM. \*P value < 0.05, \*\*P value < 0.01 and \*\*\*P value < 0.001 vs. Cont (n = 3).