



## OPEN ACCESS

## EDITED BY

Mimma Rizzo,  
Azienda Ospedaliero Universitaria  
Consortiale Policlinico di Bari, Italy

## REVIEWED BY

Alessandra Dimino,  
University of Palermo, Italy  
Gaetano Pezzicoli,  
University of Bari Aldo Moro, Italy

## \*CORRESPONDENCE

Sandra Zekic Tomas  
✉ szekic@mefst.hr

RECEIVED 01 September 2023

ACCEPTED 03 November 2023

PUBLISHED 20 November 2023

## CITATION

Strikic A, Kokeza J, Ogorevc M, Kelam N,  
Vukoja M, Dolonga P and Tomas SZ (2023)  
Differential expression of *HIF1A* and its  
downstream target *VEGFA* in the main  
subtypes of renal cell carcinoma and  
their impact on patient survival.  
*Front. Oncol.* 13:1287239.  
doi: 10.3389/fonc.2023.1287239

## COPYRIGHT

© 2023 Strikic, Kokeza, Ogorevc, Kelam,  
Vukoja, Dolonga and Tomas. This is an  
open-access article distributed under the  
terms of the [Creative Commons Attribution  
License \(CC BY\)](https://creativecommons.org/licenses/by/4.0/). The use, distribution or  
reproduction in other forums is permitted,  
provided the original author(s) and the  
copyright owner(s) are credited and that  
the original publication in this journal is  
cited, in accordance with accepted  
academic practice. No use, distribution or  
reproduction is permitted which does not  
comply with these terms.

# Differential expression of *HIF1A* and its downstream target *VEGFA* in the main subtypes of renal cell carcinoma and their impact on patient survival

Ante Strikic<sup>1</sup>, Josipa Kokeza<sup>2</sup>, Marin Ogorevc<sup>3</sup>, Nela Kelam<sup>3</sup>,  
Martina Vukoja<sup>4</sup>, Petar Dolonga<sup>5</sup> and Sandra Zekic Tomas<sup>6,7\*</sup>

<sup>1</sup>Department of Oncology and Radiotherapy, University Hospital of Split, Split, Croatia, <sup>2</sup>Department of Pulmonology, University Hospital of Split, Split, Croatia, <sup>3</sup>Department of Anatomy, Histology and Embryology, University of Split School of Medicine, Split, Croatia, <sup>4</sup>Laboratory of Morphology, Department of Histology and Embryology, School of Medicine, University of Mostar, Mostar, Bosnia and Herzegovina, <sup>5</sup>University of Split School of Medicine, Split, Croatia, <sup>6</sup>Department of Pathology, Forensic Medicine and Cytology, University Hospital of Split, Split, Croatia, <sup>7</sup>Department of Pathology, University of Split School of Medicine, Split, Croatia

Renal cell carcinoma (RCC) represents around 3% of all cancers, with the most frequent histological types being clear-cell RCC (ccRCC), followed by papillary (pRCC) and chromophobe (chRCC). Hypoxia-inducible factors (HIFs), which promote the expression of various target genes, including vascular endothelial growth factor (VEGF) and the high-affinity glucose transporter 1, have an important role in the pathogenesis of RCC. This study investigated the immunohistochemical expression of HIF-1 $\alpha$  and VEGF-A, showing significantly higher HIF-1 $\alpha$  nuclear expression in pRCC compared to ccRCC, while there was no significant difference in VEGF-A protein expression between the analyzed histological RCC subtypes. The quantitative reverse transcription polymerase chain reaction for *HIF1A* showed no statistical difference between histological types. Data from publicly available RNA sequencing databases were analyzed and showed that, compared to healthy kidney tissue, *VEGFA* was significantly up-regulated in ccRCC and significantly down-regulated in pRCC. The comparison between histological subtypes of RCC revealed that *VEGFA* was significantly up-regulated in ccRCC compared to both pRCC and chRCC. There was no statistically significant difference in survival time between *HIF1A* high- and low-expression groups of patients. As for *VEGFA* expression, pRCC patients with low expression had a significantly higher survival rate compared to patients with high *VEGFA* expression.

## KEYWORDS

HIF-1 $\alpha$ , VEGF, VEGF-A, renal carcinoma, renal cell carcinoma

## 1 Introduction

Renal cell carcinoma (RCC) is a relatively common type of cancer, with an estimated 431,288 new cases of kidney cancer and 179,368 deaths from the disease worldwide in 2020 (1). According to the American Cancer Society, the five-year relative survival rate for all stages of kidney cancer is around 75%; however, the survival rates vary significantly. In localized kidney cancer, the five-year survival rate is 93% compared to cases where the cancer has spread to distant organs with 12% (2).

The 2022 WHO classification system recognizes several types of renal tumors, including clear-cell RCC (ccRCC), papillary RCC (pRCC), oncocytic and chromophobe renal tumors (chRCC), collecting duct tumors, other renal tumors and molecularly defined renal carcinomas, metanephric tumors, mixed epithelial and stromal renal tumors, renal mesenchymal tumors, embryonal neoplasms of the kidney, and miscellaneous renal tumors (3).

The most important genetic mutation in renal cancer tumorigenesis is the mutation of the von Hippel Lindau gene (*VHL*), a tumor suppressor gene encoding the von Hippel Lindau protein (pVHL) (4). The primary function of pVHL is to target and degrade hypoxia-inducible factors (HIFs), particularly HIF-1 $\alpha$  and HIF-2 $\alpha$ , under normal oxygen conditions. HIFs are transcription factors that regulate genes involved in oxygen sensing, angiogenesis, and cell growth (5). In ccRCC, the *VHL* gene is often mutated or inactivated, resulting in loss of function of pVHL (6). This leads to the stabilization and accumulation of HIF-1 $\alpha$  and HIF-2 $\alpha$ , even under normoxic conditions. Stabilized HIFs promote the expression of various target genes, including vascular endothelial growth factor (*VEGFA*) and platelet-derived growth factor (*PDGF*). VEGF-A is a potent pro-angiogenic factor that stimulates the growth of new blood vessels from existing ones, a process called angiogenesis (7, 8). In RCC, VEGF is often overexpressed, leading to excessive angiogenesis, which contributes to tumor growth and metastasis (9). VEGF-A has been particularly associated with ccRCC, where its overexpression is commonly observed. Other RCC subtypes, such as papillary and chromophobe RCC, may also show VEGF-A involvement, although to a lesser extent (10).

The present study aimed to determine *HIF1A* mRNA expression, the protein expression of HIF-1 $\alpha$  and VEGF-A in the three most common histological types of renal cancer – ccRCC, pRCC, chRCC, as well as to analyze *HIF1A* and *VEGFA* differential gene expression and its influence on patient's survival.

## 2 Materials and methods

### 2.1 Tissue procurement and processing

This retrospective cross-sectional study was conducted in the Pathology Department, University Hospital Centre Split, Croatia, and was approved by the Hospital Ethics Committee (class: 500-03/20-01/09, approval number: 2181-147-01/06/M.S.-20-09, approval date: 13 May 2020). The tumor samples were selected from the Pathology Department's archive. The institute's database of pathohistological

reports was searched using the International Classification of Diseases (ICD)-10 code: C64, which stands for the malignant neoplasm of the kidney. The inclusion criteria were operational materials (radical or complete nephrectomies) with patients' medical history available for the clinical data. Immediately after surgery the specimens were analyzed and sectioned by a genitourinary pathologist, after which the sections were immediately submerged into a 4% buffered formalin solution and further processed by standard protocols. The samples from biopsies or the ones with insufficient clinical data were excluded from the study. A total of 39 paraffin blocks containing RCC samples were collected, 14 of those being RCCs, 13 pRCCs, and 12 chRCCs. The tumor samples included in the study were classified according to the 2022 World Health Organization Classification of Tumors of the Urinary System and Male Genital Organs. Although nuclear grading is not recommended for all RCC histological subtypes, for the purpose of this study we've assigned nuclear grade to each RCC sample with the use of the WHO/ISUP grading system (3). From each paraffin block, a 4  $\mu$ m-thick section was cut, mounted, and dried at 37°C. Then, the sections were stained with hematoxylin and eosin and reevaluated by a genitourinary pathologist.

### 2.2 Immunohistochemical staining and HSCORE calculation

HIF-1 $\alpha$  and VEGF-A immunohistochemical analyses were done as described in our previous work (11). Briefly, sections from RCC paraffin blocks were placed on super frost glass (Thermoscientific, Germany) and processed in an automatic stainer (Ventana Bench Mark Ultra Autostainer, Ventana Roche, Tucson, Arizona, USA). The following antibodies were used: primary rabbit polyclonal IgG antibody clone H-206 (Santa Cruz Biotechnology Inc., Dallas, Texas, USA) for HIF-1 $\alpha$  and primary polyclonal rabbit antibody clone ab46154 (Abcam, England) for VEGF-A. Ultra view Universal DAB detection kit (Ventana, Tucson, Arizona, USA) was used as a secondary antibody. Nuclear brown staining was considered positive for HIF-1 $\alpha$  and brown cytoplasmic and membranous staining was considered positive for VEGF-A. Placenta tissue served as a positive control. The HIF-1 $\alpha$  protein expression was determined as the percentage of tumor cells displaying nuclear positivity. The VEGF-A protein expression was determined using the HScore method according to the following formula  $HScore = \sum Pi (i + 1)$ , where  $i$ =staining intensity determined as 1 (weak), 2 (moderate), or 3 (strong), and  $Pi$  is the percentage of staining of kidney cancer cells for each intensity (12). For each RCC sample, 10 high- power fields of view (HPF) were analyzed. HScore was determined for each visual field of the sample. The final HScore for each sample was calculated as the arithmetic mean of all 10 HPF.

### 2.3 RNA Isolation and Reverse transcription

Total RNA was isolated from 20 human formalin-fixed paraffin-embedded kidney samples (clear cell  $n=7$ ; chromophobe  $n=6$ ;

papillary n=7). Each sample contained 5 mm<sup>2</sup> of tumor tissue without necrosis and normal kidney tissue. Multiple 8 μm thick tissue slices were placed in RNase-free tubes and processed with High Pure RNA Paraffin (Cat. No. 03270289001; Roche, Basel, Switzerland) according to the manufacturer's instructions. The protocol starts with deparaffinization of the tissue embedded in paraffin, washing in absolute ethanol, and centrifuging at maximum speed for 2 min. Proteinase K and the Tissue Lysis Buffer were added to the dried pellet for digestion and incubated overnight. The next day, the Binding buffer and ethanol were added to the lysate, and the solution was applied to a spin column. The bound RNA was washed from the column. DNase working solution and Incubation buffer were added to the eluate and mixed. The Qubit<sup>TM</sup> 4 Fluorometer (Thermo Fisher Scientific Inc., Waltham, MA, USA) was used to quantify the total RNA in each sample. The samples were diluted to match the lowest measured concentration (5.30 ng/μL). 5.30 nanogram of total RNA was reverse transcribed into complementary DNA (cDNA) with a High-Capacity Reverse Transcriptase Kit (Applied Biosystems, CA, USA) using random primers according to the manufacturer's instructions. cDNA (final volume of 20 μL) was stored at -80°C for subsequent quantification of genes of interest.

### 2.3.1 qPCR

qPCR analysis was performed using Taqman® Fast Advanced Universal Master Mix II (Applied Biosystems, Waltham, MA, USA) comprising AmpEraseuracil-N-glycosylase and the passive reference dye ROX. Probes Taqman® gene expression assays for human HIF1A were supplied by Applied Biosystems (Hs00153153\_m1). Glyceraldehyde-3-phosphate dehydrogenase (*GAPDH*) was analyzed as a housekeeping gene (Hs99999905\_m1). Taqman real-time PCR was performed using a 2 μL cDNA template, 1 μL Taqman® (Applied Biosystems, Waltham, MA, USA) gene expression assay, and 10 μL Taqman® (Applied Biosystems, Waltham, MA, USA) universal master mix (to the final volume of 20 μL of). The PCR protocol used involved heating for 2 min at 50°C for uracil-N-glycosylase activation, then heating for 2 min at 95°C for polymerase activation, followed by 40 cycles of amplification (3 s at 95°C and 30 s at 60°C). We performed duplicate PCRs per gene per cDNA sample. A negative control containing nuclease-free water instead of a cDNA template was used in each experiment. The 2-ΔΔCt method was used as the method of relative quantification. The plate was then analyzed using the Applied Biosystems<sup>TM</sup> 7500 RT-PCR system (Thermo Fisher Scientific, Waltham, MA, USA). To perform the 2-ΔΔCt method, the average of the ΔCt values from pRCC samples was used as a calibrator to calculate the relative fold gene expression of all samples concerning RCC.

## 2.4 Differential gene expression and survival analysis

The differential expression of the *HIF1A* and *VEGFA* genes between ccRCC, pRCC, chRCC, and healthy kidney tissue was performed using the University of California Santa Cruz (UCSC)

Xena platform (<http://xena.ucsc.edu/>) (13). First, we have selected appropriate studies from the TCGA TARGET Genotype-Tissue Expression (GTEx) study that contains RNAseq data, specifically, the TCGA Kidney Clear Cell Carcinoma (KIRC, n=531), TCGA Kidney Papillary Cell Carcinoma (KIRP, n=289), TCGA Kidney Chromophobe (KICH, n=66), and GTEx Kidney (n=28) studies. A differential expression analysis was performed for each pair of the selected studies. The limma voom method was used for differential expression analysis, with the P-value threshold set at 0.01 and the log<sub>2</sub>(fold change) threshold set at 1. The differential expression analysis was visualized by volcano plots made in GraphPad Prism 9.0.0. software (GraphPad Software, San Diego, CA, SAD).

The survival analysis was performed as described in our previous work (11). Briefly, we retrieved the data for the RNA expression of the *HIF1A* and *VEGFA* genes and overall survival of patients from the Genomic Data Commons (GDC) TCGA Kidney Clear Cell Carcinoma (KIRC), GDC TCGA Kidney Papillary Cell Carcinoma (KIRP), and GDC TCGA Kidney Chromophobe (KICH) studies using the UCSC Xena platform (<http://xena.ucsc.edu/>). The data were exported and edited in Microsoft® Excel® 2019 MSO version 2305 (Microsoft Corp., Redmond, WA, USA). After curating the data for double samples, 270 patients were included in the survival analysis for ccRCC, 152 patients for pRCC, and 38 patients for chRCC. Survival analysis was performed based on expression groups (i.e., between the lowest and highest quartile for each gene) in GraphPad 9.0.0. software (GraphPad Software, San Diego, CA, USA). The Log-rank test and Kaplan–Meier method was used for the statistical analysis of the survival length.

## 2.5 Statistical analysis

The statistical analyses were done in GraphPad Prism 9.0.0 software (GraphPad Software, San Diego, CA, USA). We used the Shapiro–Wilk test to determine the normality of the data distribution. Correlations between the patient's age at the time of diagnosis, tumor size, HIF-1α, and VEGF-A protein expression were performed using Spearman's rank correlation coefficient. The existence of significant differences in HIF-1α and VEGF-A protein expression between sexes, tumor nuclear grades, and tumor groups based on the presence of necrosis was determined by the Mann–Whitney U test, while the Kruskal–Wallis test with uncorrected Dunn's *post-hoc* test were used for the differences between tumor histological subtypes. For the *HIF1A* RT–qPCR analysis, Ordinary one-way ANOVA followed by Tukey's multiple comparison test was performed for statistical analysis. Statistical significance was set at p < 0.05. All data are presented as the mean ± standard deviation.

## 3 Results

The study included a total of 39 patients diagnosed with RCC; 26 men (66.66%) and 13 women (33.33%). The average age for female patients was 66 and for male patients 55 years of age. ccRCC was diagnosed in 14 cases (35.89%), pRCC in 13 cases (33.33%) and

12 cases were chRCC (30,76%). There was no statistically significant difference between studied histological RCC types regarding the patient's sex. chRCC patients were diagnosed at an earlier age compared to ccRCC and pRCC patients which was statistically significant ( $p=0.037$ ). The gross and histological characteristics of the studied RCCs are presented in Table 1. There was no statistically significant difference in tumor size, pathological stage of the disease according to the primary tumor (pT), presence of sarcomatoid features, and lymphovascular invasion. pRCC had a significantly

higher number of cases with tumor necrosis compared to both ccRCC and pRCC ( $p=0.026$ ).

### 3.1 HIF-1 $\alpha$ and VEGF-A protein expression

Nuclear staining of tumor cells for HIF-1 $\alpha$  was considered positive. The intensity of the nuclear staining ranged from moderate to strong (Figure 1). The protein expression of HIF-1 $\alpha$ , measured as

TABLE 1 The gross and histological characteristics of studied renal cell carcinomas (RCC); clear cell RCC (ccRCC), papillary RCC (pRCC) and chromophobe RCC (chRCC).

	ccRCC <i>n</i> =14	pRCC <i>n</i> =13	chRCC <i>n</i> =12	P
Tumor size (cm)	7 $\pm$ 3.8	5 $\pm$ 3	4 $\pm$ 2.3	0.124 <sup>‡</sup>
Primary tumor (pT) <sup>†</sup>				
pT1a	4	5	8	0.194*
pT1b	3	3	3	
pT2a	0	2	0	
pT2b	1	0	0	
pT3a	6	3	1	
Sarcomatoid Features	2	1	1	0.824*
Tumor necrosis	3	8	1	0.026*
				Lymphovascular Invasion
2	2	0	0.948*	

\*Kruskal-Wallis test with Dunn's post-hoc test; <sup>‡</sup>Chi-squared test; <sup>†</sup>pT1a Tumor less than or equal to 4 cm in greatest dimension, limited to the kidney; pT1b Tumor greater than 4 cm but less than or equal to 7 cm in greatest dimension limited to the kidney; pT2a Tumor greater than 7 cm but less than or equal to 10 cm in greatest dimension, limited to the kidney; pT2b Tumor greater than 10 cm, limited to the kidney; pT3a Tumor extends into the renal vein or its segmental branches, or invades the pelvicalyceal system, or invades perirenal and/or renal sinus fat but not beyond Gerota's fascia.

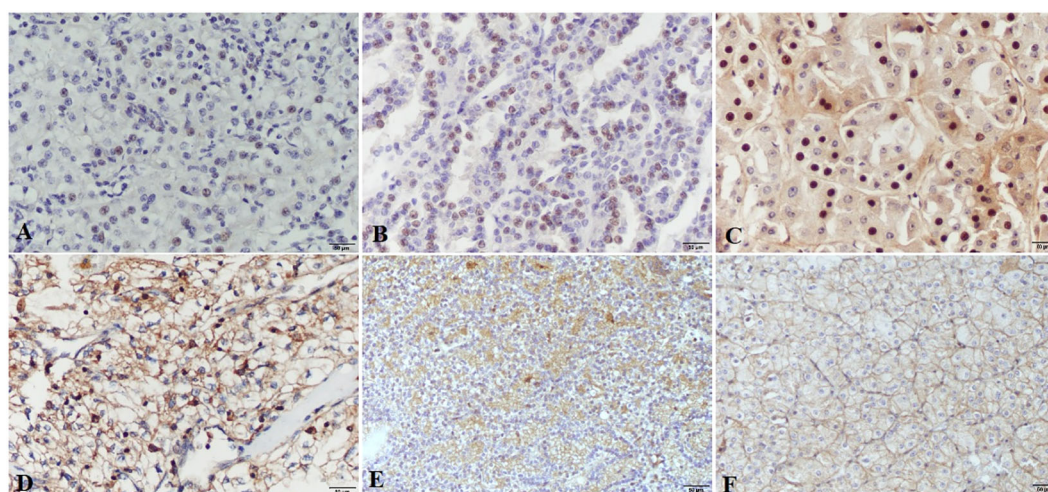


FIGURE 1

HIF-1 $\alpha$  and VEGF-A expression in renal cell carcinomas. HIF-1 $\alpha$  nuclear expression is present in clear cell renal carcinomas (A), papillary renal cell carcinomas (B) and chromophobe renal cell carcinomas (C), images (A–C) are taken at  $\times 200$  magnification; scale bars represent 50  $\mu$ m. VEGF-A shows strong to moderate expression in clear cell renal carcinomas (D), papillary renal cell carcinomas (E) and Chromophobe renal cell carcinomas (F), images (D–F) are taken at  $\times 100$  magnification; scale bars represent 50  $\mu$ m.

the percentage of tumor cells displaying nuclear positivity, was not significantly different regarding RCC patients' sex, type of tumor removal surgery, macroscopic or microscopic tumor extension, clinical stage, nuclear grade, or the presence of tumor necrosis (Table 2). There was, however, a significant difference between histological subtypes with pRCC having higher HIF-1 $\alpha$  protein expression than ccRCC. There was no significant correlation between HIF-1 $\alpha$  protein expression and patients' age or tumor size.

VEGF-A expression was determined according to the intensity of membranous and/or cytoplasmic brown staining of tumor cells as weak, moderate, or strong. Most of the tumors had a heterogeneous staining pattern (Figure 1). While VEGF-A protein expression measured by the Hscore was significantly higher in female patients compared to males, there were no significant differences regarding the type of tumor removal surgery, macroscopic or microscopic tumor extension, clinical stage, histological subtype, nuclear grade, or the presence of necrosis. There was also no significant correlation between VEGF-A protein expression and patients' age or tumor size.

### 3.2 HIF1A RT-qPCR analysis

The RT-qPCR analysis of human RCCs was performed using the primer for HIF-1 $\alpha$ . The HIF1A mRNA fold change gene expression comparison between clear cell (ccRCC), chromophobe (chRCC), and papillary (pRCC) renal cell carcinoma was performed and no statistically significant difference was observed between the examined groups (Figure 2). GAPDH median cycles for ccRCC (32.94), chRCC (31.67), and PRCC (34.88) indicate that the cohorts are comparable (Supplementary Table S1).

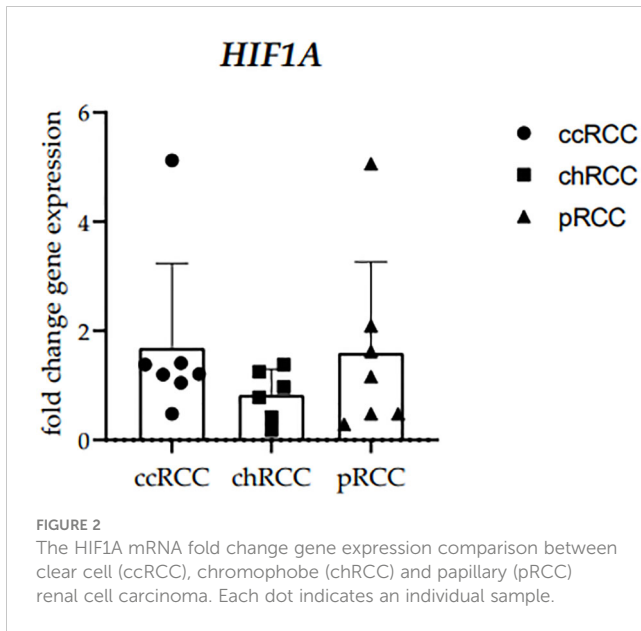
### 3.3 Differential gene expression

The RNA sequencing (RNAseq) data from The Cancer Genome Atlas (TCGA) Kidney Clear Cell Carcinoma (KIRC), TCGA Kidney Papillary Cell Carcinoma (KIRP), TCGA Kidney Chromophobe (KICH), and GTEx Kidney studies was analyzed to determine whether HIF1A and VEGFA were differentially expressed in the

TABLE 2 Immunohistochemical expression of HIF-1 $\alpha$  and VEGF-A in RCC according to clinicopathological characteristics of patients.

	HIF-1 $\alpha$ score	P	VEGF-A score	P
<b>Sex</b>				
Male (n=26)	18.18 $\pm$ 13.48	0.2279*	1.89 $\pm$ 1.23	0.0115*
Female (n=13)	23.87 $\pm$ 14.21		3.02 $\pm$ 1.19	
<b>Type of surgery</b>				
Radical nephrectomy (n=27)	20.40 $\pm$ 14.85	0.6680 <sup>†</sup>	2.28 $\pm$ 1.32	0.9889 <sup>†</sup>
Partial nephrectomy (n=2)	28.43 $\pm$ 18.21		2.10 $\pm$ 2.69	
Tumorectomy (n=7)	20.33 $\pm$ 10.39		2.26 $\pm$ 1.17	
<b>Macroscopic tumor extension</b>				
Confined to kidney (n=28)	22.09 $\pm$ 14.00	0.3943*	2.32 $\pm$ 1.30	0.6737*
Extends beyond kidney (n=8)	16.41 $\pm$ 13.84		2.06 $\pm$ 1.44	
<b>Microscopic tumor extension</b>				
Confined to kidney (n=26)	23.29 $\pm$ 13.80	0.1327*	2.42 $\pm$ 1.29	0.2885*
Extends beyond kidney (n=10)	14.42 $\pm$ 12.92		1.84 $\pm$ 1.37	
<b>Clinical stage</b>				
Stage I (n=25)	22.73 $\pm$ 13.12	0.5465 <sup>†</sup>	2.38 $\pm$ 1.25	0.7471 <sup>†</sup>
Stage II (n=3)	16.78 $\pm$ 23.05		1.82 $\pm$ 1.93	
Stage III (n=8)	16.41 $\pm$ 13.84		2.06 $\pm$ 1.44	
<b>Histological subtype</b>				
ccRCC (n=14)	14.72 $\pm$ 12.07	0.0224 <sup>†</sup>	1.78 $\pm$ 1.21	0.2744 <sup>†</sup>
pRCC (n=13)	28.52 $\pm$ 14.78		2.61 $\pm$ 1.31	
chRCC (n=12)	17.16 $\pm$ 10.88		2.45 $\pm$ 1.38	
<b>Nuclear grade (Furham)</b>				
low (n=16)	17.74 $\pm$ 16.14	0.5449*	1.98 $\pm$ 1.32	0.2000*
high (n=18)	19.52 $\pm$ 11.93		2.53 $\pm$ 1.31	
<b>Tumor necrosis</b>				
present (n=12)	23.29 $\pm$ 16.24	0.2420*	2.11 $\pm$ 1.34	0.6899*
not present (n=24)	18.65 $\pm$ 12.66		2.33 $\pm$ 1.32	

\*Mann-Whitney U test, <sup>†</sup>Kruskal-Wallis test with Uncorrected Dunn's post-hoc test.



analyzed groups, where a two-fold change was considered significant. There was no differential expression of *HIF1A* between any of the analyzed groups (Figure 3). When comparing RCC with normal kidney tissue, *VEGFA* was significantly up-regulated in ccRCC and significantly down-regulated in pRCC, while there was no significant difference between chRCC and normal kidney tissue. The comparison between histological subtypes of RCC revealed that *VEGFA* was significantly up-regulated in ccRCC compared to both pRCC and chRCC. In fact,

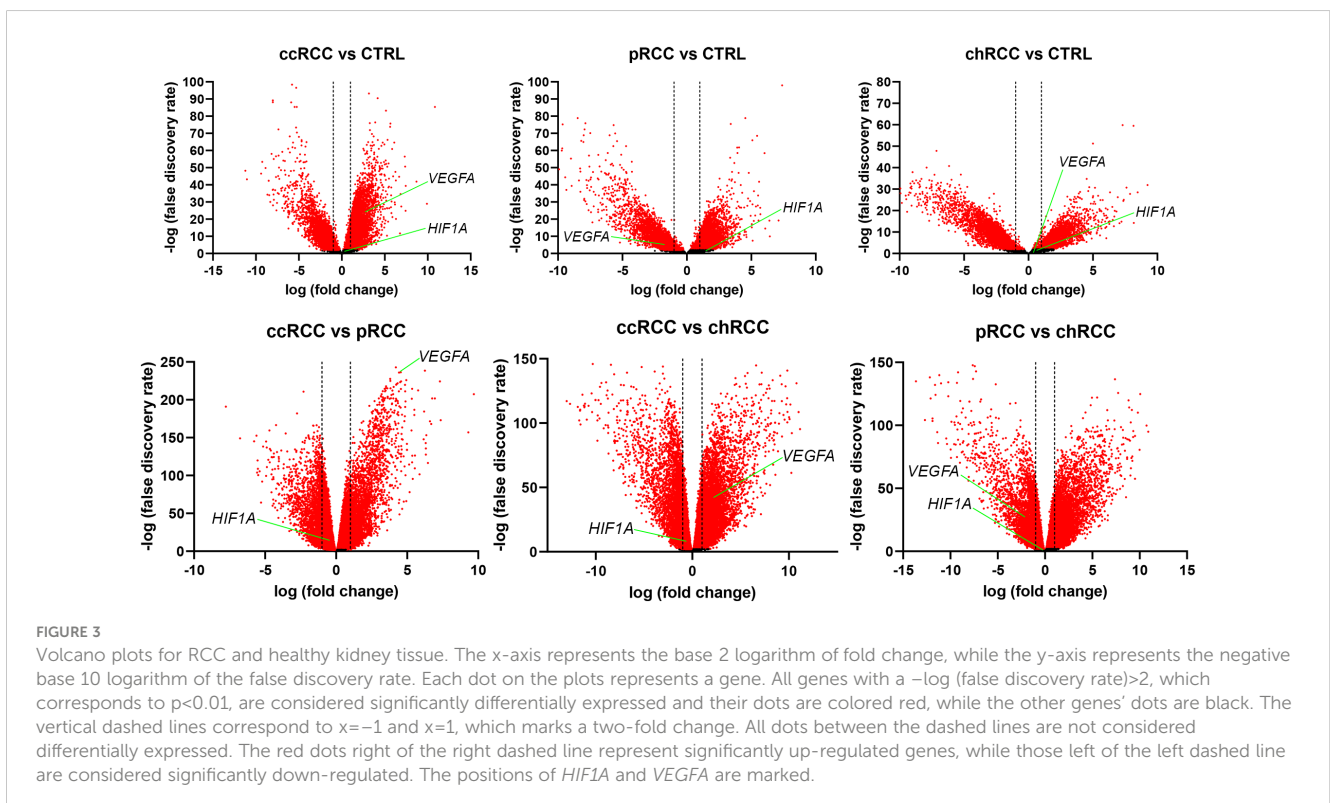
*VEGFA* was the fourth most up-regulated gene in ccRCC compared to pRCC. *VEGFA* was also significantly downregulated in pRCC compared to chRCC.

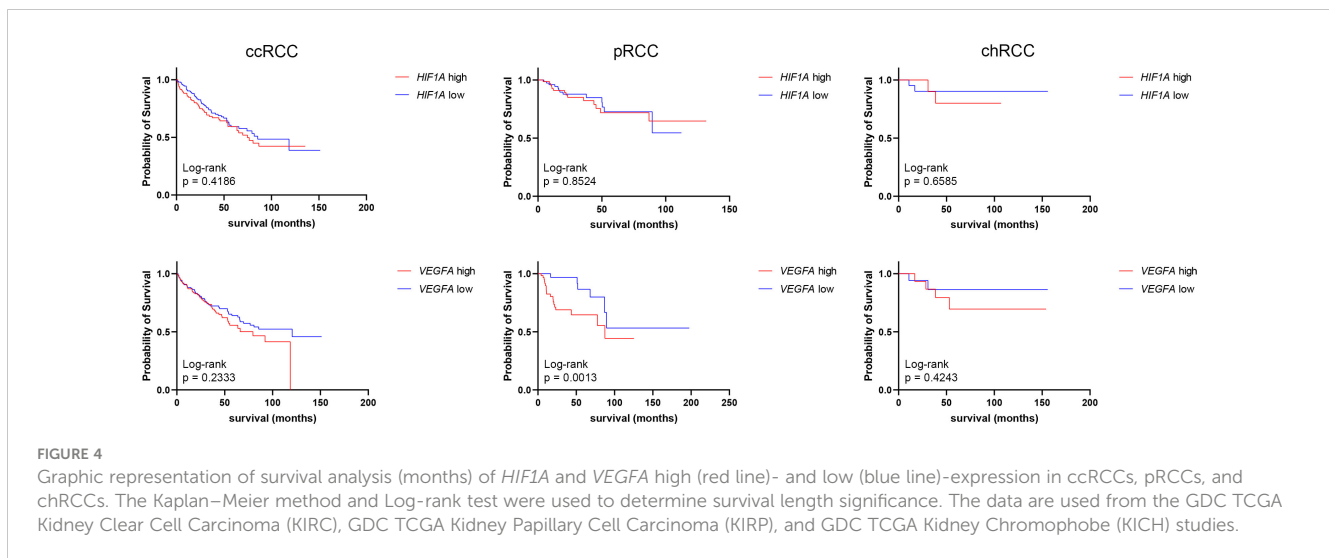
### 3.4 *HIF1A* and *VEGFA* expression and patient survival

*HIF1A* and *VEGFA* mRNA expressions obtained from the GDC TCGA Kidney Clear Cell Carcinoma (KIRC), GDC TCGA Kidney Papillary Cell Carcinoma (KIRP), and GDC TCGA Kidney Chromophobe (KICH) studies were analyzed to determine the median survival time (mst) and survival rate between low- and high-expression groups (Figure 4). There was no statistically significant difference in survival time between *HIF1A* high- and low-expression groups of ccRCC, pRCC, or chRCC patients. As for *VEGFA* expression, there were no significant differences in survival time of ccRCC and chRCC patients based on *VEGFA* mRNA levels, however, pRCC patients with low *VEGFA* expression had a significantly higher ( $p=0.0013$ ) survival rate (more than half of patients are still alive) compared to patients with high *VEGFA* expression (mst 87.5 months) (Figure 4).

## 4 Discussion

The results of the presented study showed pRCC having higher HIF-1 $\alpha$  protein expression than ccRCC. Previous studies in ccRCC showed that HIF-1 $\alpha$  expression is frequently upregulated due to





mutations or inactivation of the *VHL* gene, which is a common feature in this subtype (5, 14). Loss of pVHL function results in the stabilization and accumulation of HIF-1 $\alpha$ , even under normoxic conditions, leading to increased HIF-1 $\alpha$  protein expression and activation of its downstream target genes (15). In contrast to ccRCC, pRCC and chRCC typically have intact *VHL* genes and lower HIF-1 $\alpha$  expression compared to ccRCC (16). As shown above, our samples had more tumor necrosis present, which, by itself presents a strong hypoxia inducer, which is a plausible explanation for higher HIF-1 $\alpha$  immunohistochemical expression. Furthermore, pRCC may exhibit increased HIF-1 $\alpha$  expression due to factors other than *VHL* mutations (17).

There was no significant correlation between HIF-1 $\alpha$  protein expression and patients' age or tumor size. Some studies have also not found a significant correlation between HIF-1 $\alpha$  expression and age in ccRCC (18, 19). On the other hand, other studies have reported a correlation between HIF-1 $\alpha$  expression and age in ccRCC, suggesting that HIF-1 $\alpha$  expression may be higher in older patients with ccRCC compared to younger patients (20). The rationale behind this correlation is that as people age, there may be cumulative cellular damage and alterations in the tumor microenvironment, including hypoxia, which could lead to increased HIF-1 $\alpha$  expression. The relationship between HIF-1 $\alpha$  and age could be influenced by various factors, including tumor stage, grade, and other molecular features. Overall, while some studies suggest a correlation between HIF-1 $\alpha$  expression and age in ccRCC, more research is needed to establish a clear and consistent association. Regarding tumor size, previous studies showed a correlation between HIF-1 $\alpha$  expression and renal tumor size, particularly in clear cell renal cell carcinoma (ccRCC) (21). Studies have shown that HIF-1 $\alpha$  expression tends to be higher in larger tumors since HIF-1 $\alpha$  plays a crucial role in the regulation of cellular responses to hypoxia (low oxygen levels) (22). As the tumor grows, it may outgrow its blood supply, leading to areas of hypoxia within the tumor mass. In response to hypoxia, HIF-1 $\alpha$  becomes

stabilized and accumulates, leading to increased HIF-1 $\alpha$  expression in larger tumors. It's important to note that the correlation between HIF-1 $\alpha$  and tumor size is not uniform across all renal cancer subtypes or other types of solid tumors (14, 23). The relationship may vary depending on the tumor's specific genetic and molecular characteristics, or, as it is in our case, the presence of tumor necrosis.

Our study revealed no significant difference among tumor types regarding RT-qPCR analysis of *HIF1A* mRNA. This could be attributed to tumor sample number, given that previous works defined higher *HIF1A* mRNA in ccRCC, than in pRCC or chRCC (24–26), however, the differential expression analysis we performed on TCGA studies with a larger sample size than any of the referenced studies has also demonstrated no significant differences in *HIF1A* expression between the analyzed tumor groups. In ccRCC, *HIF1A* is extensively studied and plays a central role in tumor development and progression (27–29). The dysregulation of *HIF1A* in ccRCC contributes to the hypervascular nature of the tumor and its aggressive behavior. In contrast to ccRCC, the role of *HIF1A* in pRCC is less well-defined and may vary among different subtypes. Studies have shown that *HIF1A* expression in pRCC is generally lower than in ccRCC (28, 30). The molecular characteristics of pRCC, including the expression of *HIF1A* and its downstream targets, can differ depending on the specific subtype of pRCC (30, 31). *HIF1A* expression in chRCC is typically lower compared to ccRCC since it is usually associated with intact *VHL* gene function (32, 33).

We used the Hscore method to determine VEGF-A expression in tumor cells. We used the Hscore method for the interpretation of immunohistochemical expression because of its advantage over other methods in data quantification. While many other studies quantify the proportion of positive cells so that a range of proportions is given a specific discrete value, the Hscore method takes the specific proportion of positive cells with a given staining intensity and uses that exact continuous value to calculate the final

score (34, 35). In our study, VEGF-A protein expression measured by the Hscore was significantly higher in female patients compared to males, while there were no significant differences regarding nuclear grade or the presence of necrosis. When analyzing histological subtypes, pRCC had the highest VEGF-A Hscore, but the results weren't significantly different. There was also no significant correlation between VEGF-A protein expression and patients' age or tumor size. The study by Song et al. showed that pRCC had higher VEGF-A expression compared to ccRCC, which was similar to our results (10). Interestingly, our differential expression analysis revealed significantly higher expression of VEGFA in ccRCC compared to both pRCC and chRCC. Additionally, pRCC had a significantly lower expression than chRCC. The same results were obtained by Situ et al. when analyzing databases that contain the same data as the database we used in our study but with different tools for gene expression analysis (36).

Unlike ccRCC, where *VEGFA* overexpression is more prevalent and consistently associated with poorer prognosis (37), the relationship between VEGF expression and pRCC outcomes appears to be more complex. A study has reported higher VEGF expression in pRCC tumors associated with adverse clinicopathological features, such as larger tumor size, higher stage, and lymph node involvement, suggesting a potential association with aggressive tumor behavior (10). Our study is in accordance with those findings, having shown that in our pRCC population with low *VEGFA* expression, overall survival was significantly prolonged. We found no significant difference in survival regarding *VEGFA* expression in ccRCC and chRCC, unlike other studies (38, 39), however, they analyzed the protein expression, not mRNA expression. While a study by Minardi et al. found that high HIF-1 $\alpha$  expression was associated with worse prognosis in ccRCC (19), we have not found any significant difference in RCC patient survival regarding *HIF1A* expression.

While this retrospective study included only samples from a single institution, and even though the sample number was limited, it is important to note that the Pathology Department at the University Hospital in Split is a reference center for the region of Dalmatia (Croatia) and parts of the neighboring Republic of Bosnia and Herzegovina. Also, given the recent update to the renal cell cancer classification, our study is the first, to the best of our knowledge, to implement the novel classification, thus clearly separating ccRCC from other types, specifically eosinophilic-like ccRCC that were known to be misclassified previously as chRCC, while only classifying as chRCC those tumors, that after extensive immunohistochemical analysis fulfilled criteria for chRCC, ensuring exclusion of other oncocyte neoplasms of low malignant potential (3).

## Data availability statement

The datasets presented in this study can be found in online repositories. The names of the repository/repositories and accession number(s) can be found in the article/Supplementary Material.

## Ethics statement

The studies involving humans were approved by University Hospital Centre Split, Croatia, Hospital Ethics Committee (class: 500-03/20-01/09, approval number: 2181-147-01/06/M.S.-20-09, approval date: 13 May 2020). The studies were conducted in accordance with the local legislation and institutional requirements. Written informed consent for participation was not required from the participants or the participants' legal guardians/next of kin in accordance with the national legislation and institutional requirements.

## Author contributions

AS: Conceptualization, Formal Analysis, Investigation, Resources, Writing – original draft, Writing – review & editing. JK: Conceptualization, Methodology, Writing – review & editing. MO: Conceptualization, Formal Analysis, Methodology, Software, Visualization, Writing – review & editing. NK: Methodology, Resources, Software, Writing – review & editing. MV: Investigation, Methodology, Resources, Writing – review & editing. PD: Software, Supervision, Visualization, Writing – review & editing. ST: Conceptualization, Investigation, Methodology, Resources, Software, Writing – original draft, Writing – review & editing.

## Funding

The author(s) declare that no financial support was received for the research, authorship, and/or publication of this article.

## Conflict of interest

The authors declare that the research was conducted in the absence of any commercial or financial relationships that could be construed as a potential conflict of interest.

## Publisher's note

All claims expressed in this article are solely those of the authors and do not necessarily represent those of their affiliated organizations, or those of the publisher, the editors and the reviewers. Any product that may be evaluated in this article, or claim that may be made by its manufacturer, is not guaranteed or endorsed by the publisher.

## Supplementary material

The Supplementary Material for this article can be found online at: <https://www.frontiersin.org/articles/10.3389/fonc.2023.1287239/full#supplementary-material>



## References

- Sung H, Ferlay J, Siegel RL, Laversanne M, Soerjomataram I, Jemal A, et al. Global cancer statistics 2020: GLOBOCAN estimates of incidence and mortality worldwide for 36 cancers in 185 countries. *CA: A Cancer J Clin* (2021) 71:209–49. doi: 10.3322/caac.21660
- Motzer RJ, Bacik J, Schwartz LH, Reuter V, Russo P, Marion S, et al. Prognostic factors for survival in previously treated patients with metastatic renal cell carcinoma. *J Clin Oncol Off J Am Soc Clin Oncol* (2004) 22:454–63. doi: 10.1200/JCO.2004.06.132
- Moch H, Amin MB, Berney DM, Comperat EM, Gill AJ, Hartmann A, et al. The 2022 world health organization classification of tumours of the urinary system and male genital organs-part A: renal, penile, and testicular tumours. *Eur Urol* (2022) 82:458–68. doi: 10.1016/j.eururo.2022.06.016
- Kim E, Zschiedrich S. Renal cell carcinoma in von hippel-lindau disease-from tumor genetics to novel therapeutic strategies. *Front Pediatr* (2018) 6:16. doi: 10.3389/fped.2018.00016
- Haase VH. The VHL tumor suppressor: master regulator of HIF. *Curr Pharm Design* (2009) 15:3895–903. doi: 10.2174/138161209789649394
- Linehan WM, Rubin JS, Bottaro DP. VHL loss of function and its impact on oncogenic signaling networks in clear cell renal cell carcinoma. *Int J Biochem Cell Biol* (2009) 41:753–6. doi: 10.1016/j.biocel.2008.09.024
- Hicklin DJ, Ellis LM. Role of the vascular endothelial growth factor pathway in tumor growth and angiogenesis. *J Clin Oncol Off J Am Soc Clin Oncol* (2005) 23:1011–27. doi: 10.1200/JCO.2005.06.081
- Johnson KE, Wilgus TA. Vascular endothelial growth factor and angiogenesis in the regulation of cutaneous wound repair. *Adv Wound Care* (2014) 3:647–61. doi: 10.1089/wound.2013.0517
- Nicol D, Hii SI, Walsh M, Teh B, Thompson L, Kennett C, et al. Vascular endothelial growth factor expression is increased in renal cell carcinoma. *J Urol* (1997) 157:1482–6. doi: 10.1016/S0022-5347(01)65028-6
- Song SH, Jeong IG, You D, Hong JH, Hong B, Song C, et al. VEGF/VEGFR2 and PDGF-B/PDGFR-beta expression in non-metastatic renal cell carcinoma: a retrospective study in 1,091 consecutive patients. *Int J Clin Exp Pathol* (2014) 7:7681–9.
- Kokeza J, Strikic A, Ogorevc M, Kelam N, Vukoja M, Dilber I, et al. The effect of GLUT1 and HIF-1alpha expressions on glucose uptake and patient survival in non-small-cell lung carcinoma. *Int J Mol Sci* (2023) 24. doi: 10.3390/ijms241310575
- Ogorevc M, Strikic A, Tomas SZ. Determining the immunohistochemical expression of GLUT1 in renal cell carcinoma using the HSCORE method. *Biomed Rep* (2021) 15:79. doi: 10.3892/br.2021.1455
- Goldman MJ, Craft B, Hastie M, Repecka K, McDade F, Kamath A, et al. Visualizing and interpreting cancer genomics data via the Xena platform. *Nat Biotechnol* (2020) 38:675–8. doi: 10.1038/s41587-020-0546-8
- Mazumder S, Higgins PJ, Samarakoon R. Downstream targets of VHL/HIF-1alpha signaling in renal clear cell carcinoma progression: mechanisms and therapeutic relevance. *Cancers* (2023) 15. doi: 10.3390/cancers15041316
- Mack FA, Rathmell WK, Arsham AM, Gnarra J, Keith B, Simon MC. Loss of pVHL is sufficient to cause HIF dysregulation in primary cells but does not promote tumor growth. *Cancer Cell* (2003) 3:75–88. doi: 10.1016/s1535-6108(02)00240-4
- Na X, Wu G, Ryan CK, Schoen SR, di'Santagnese PA, Messing EM. Overproduction of vascular endothelial growth factor related to von Hippel-Lindau tumor suppressor gene mutations and hypoxia-inducible factor-1 alpha expression in renal cell carcinomas. *J Urol* (2003) 170:588–92. doi: 10.1097/01.ju.0000074870.54671.98
- Swiatek M, Jancewicz I, Kluebsongnoen J, Zub R, Maassen A, Kubala S, et al. Various forms of HIF-1alpha protein characterize the clear cell renal cell carcinoma cell lines. *IUBMB Life* (2020) 72:1220–32. doi: 10.1002/iub.2281
- Liu YM, Ying SP, Huang YR, Pan Y, Chen WJ, Ni LQ, et al. Expression of HIF-1alpha and HIF-2alpha correlates to biological and clinical significance in papillary thyroid carcinoma. *World J Surg Oncol* (2016) 14:30. doi: 10.1186/s12957-016-0785-9
- Minardi D, Lucarini G, Santoni M, Mazzucchelli R, Burattini L, Conti A, et al. Survival in patients with clear cell renal cell carcinoma is predicted by HIF-1alpha expression. *Anticancer Res* (2015) 35:433–8.
- Bosch-Marce M, Okuyama H, Wesley JB, Sarkar K, Kimura H, Liu YV, et al. Effects of aging and hypoxia-inducible factor-1 activity on angiogenic cell mobilization and recovery of perfusion after limb ischemia. *Circ Res* (2007) 101:1310–8. doi: 10.1161/CIRCRESAHA.107.153346
- Xiao-Fen W, Ting C, Jie L, Deng-Yang M, Qing-Feng Z, Xin L. Correlation analysis of VHL and Jade-1 gene expression in human renal cell carcinoma. *Open Med (Wars)* (2016) 11:226–30. doi: 10.1515/med-2016-0043
- Sumera S, Ali A, Yousafzai YM, Durrani Z, Alorini M, Aleem B, et al. Overexpression of hypoxia-inducible factor-1alpha and its relation with aggressiveness and grade of oral squamous cell carcinoma. *Diagnostics (Basel)* (2023) 13. doi: 10.3390/diagnostics13030451
- Hutchison GJ, Valentine HR, Lancaster JA, Davidson SE, Hunter RD, Roberts SA, et al. Hypoxia-inducible factor 1alpha expression as an intrinsic marker of hypoxia: correlation with tumor oxygen, pimonidazole measurements, and outcome in locally advanced carcinoma of the cervix. *Clin Cancer Res Off J Am Assoc Cancer Res* (2004) 10:8405–12. doi: 10.1158/1078-0432.CCR-03-0135
- Balamurugan K, Luu VD, Kaufmann MR, Hofmann VS, Boysen G, Barth S, et al. Onconeural cerebellar degeneration-related antigen, Cdr2, is strongly expressed in papillary renal cell carcinoma and leads to attenuated hypoxic response. *Oncogene* (2009) 28:3274–85. doi: 10.1038/onc.2009.186
- Schultz L, Chau A, Albadine R, Hicks J, Kim JJ, De Marzo AM, et al. Immunorepression status and prognostic value of mTOR and hypoxia-induced pathway members in primary and metastatic clear cell renal cell carcinomas. *Am J Surg Pathol* (2011) 35:1549–56. doi: 10.1097/PAS.0b013e31822895e5
- Wan L, Huang J, Chen J, Wang R, Dong C, Lu S, et al. Expression and significance of FOXP1, HIF-1a and VEGF in renal clear cell carcinoma. *J B.U.ON. Off J Balkan Union Oncol* (2015) 20:188–95.
- Gudas LJ, Fu L, Minton DR, Mongan NP, Nanus DM. The role of HIF1alpha in renal cell carcinoma tumorigenesis. *J Mol Med (Berl)* (2014) 92:825–36. doi: 10.1007/s00109-014-1180-z
- Schodel J, Grampp S, Maher ER, Moch H, Ratcliffe PJ, Russo P, et al. Hypoxia, hypoxia-inducible transcription factors, and renal cancer. *Eur Urol* (2016) 69:646–57. doi: 10.1016/j.eururo.2015.08.007
- Wu Q, You L, Nepovimova E, Heger Z, Wu W, Kuca K, et al. Hypoxia-inducible factors: master regulators of hypoxic tumor immune escape. *J Hematol Oncol* (2022) 15:77. doi: 10.1186/s13045-022-01292-6
- Wohlrab C, Vissers MCM, Phillips E, Morrin H, Robinson BA, Dachs GU. The association between ascorbate and the hypoxia-inducible factors in human renal cell carcinoma requires a functional von hippel-lindau protein. *Front Oncol* (2018) 8:574. doi: 10.3389/fonc.2018.00574
- Testa U, Pelosi E, Castelli G. Genetic alterations in renal cancers: identification of the mechanisms underlying cancer initiation and progression and of therapeutic targets. *Medicines (Basel)* (2020) 7. doi: 10.3390/medicines7080044
- Klatte T, Seligson DB, Riggs SB, Leppert JT, Berkman MK, Kleid MD, et al. Hypoxia-inducible factor 1 alpha in clear cell renal cell carcinoma. *Clin Cancer Res Off J Am Assoc Cancer Res* (2007) 13:7388–93. doi: 10.1158/1078-0432.CCR-07-0411
- Velickovic M, Delahunt B, Storkel S, Grebom SK. VHL and FHIT locus loss of heterozygosity is common in all renal cancer morphotypes but differs in pattern and prognostic significance. *Cancer Res* (2001) 61:4815–9.
- Kobayashi M, Uematsu T, Tokura Y, Takei K, Sakamoto K, Narimatsu T, et al. Immunohistochemical expression of sodium-dependent glucose transporter - 2 (SGLT-2) in clear cell renal carcinoma: possible prognostic implications. *Int Braz J urol Off J Braz Soc Urol* (2019) 45:169–78. doi: 10.1590/S1677-5538.IBJU.2018.0271
- Tomas SZ, Prusac IK, Roje D, Tadin I. Trophoblast apoptosis in placentas from pregnancies complicated by preeclampsia. *Gynecologic Obstetric Invest* (2011) 71:250–5. doi: 10.1159/000320289
- Situ Y, Xu Q, Deng L, Zhu Y, Gao R, Lei L, et al. System analysis of VEGFA in renal cell carcinoma: The expression, prognosis, gene regulation network and regulation targets. *Int J Biol Markers* (2022) 37:90–101. doi: 10.1177/17246008211063501
- Kraljevic M, Marijanovic I, Barbaric M, Sokolovic E, Bukva M, Ceric T, et al. Prognostic and predictive significance of VEGF, CD31, and Ang-1 in patients with metastatic clear cell renal cell carcinoma treated with first-line sunitinib. *Biomolecules Biomedicine* (2023) 23:161–9. doi: 10.17305/bjbm.2022.7675
- Djordjevic G, Mozetic V, Mozetic DV, Licul V, Ilijas KM, Mustac E, et al. Prognostic significance of vascular endothelial growth factor expression in clear cell renal cell carcinoma. *Pathology Res Pract* (2007) 203:99–106. doi: 10.1016/j.prp.2006.12.002
- Minardi D, Lucarini G, Santoni M, Mazzucchelli R, Burattini L, Pistelli M, et al. VEGF expression and response to sunitinib in patients with metastatic clear cell renal cell carcinoma. *Anticancer Res* (2013) 33:5017–22.