



OPEN ACCESS

APPROVED BY
Frontiers Editorial Office,
Frontiers Media SA, Switzerland

*CORRESPONDENCE
Frontiers Production Office
✉ production.office@frontiersin.org

RECEIVED 31 August 2023
ACCEPTED 31 August 2023
PUBLISHED 27 September 2023

CITATION
Frontiers Production Office (2023) Erratum:
Nodular cutaneous metastasis of the
leg in advanced urothelial bladder
carcinoma: a case report and
systematic literature review.
Front. Oncol. 13:1286604.
doi: 10.3389/fonc.2023.1286604

COPYRIGHT

© 2023 Frontiers Production Office. This is
an open-access article distributed under the
terms of the [Creative Commons Attribution
License \(CC BY\)](#). The use, distribution or
reproduction in other forums is permitted,
provided the original author(s) and the
copyright owner(s) are credited and that
the original publication in this journal is
cited, in accordance with accepted
academic practice. No use, distribution or
reproduction is permitted which does not
comply with these terms.

Erratum: Nodular cutaneous metastasis of the leg in advanced urothelial bladder carcinoma: a case report and systematic literature review

Frontiers Production Office*

Frontiers Media SA, Lausanne, Switzerland

KEYWORDS

bladder, cancer, metastasis, urothelial, cutaneous, cutaneous metastasis, urothelial bladder carcinoma, systematic literature review

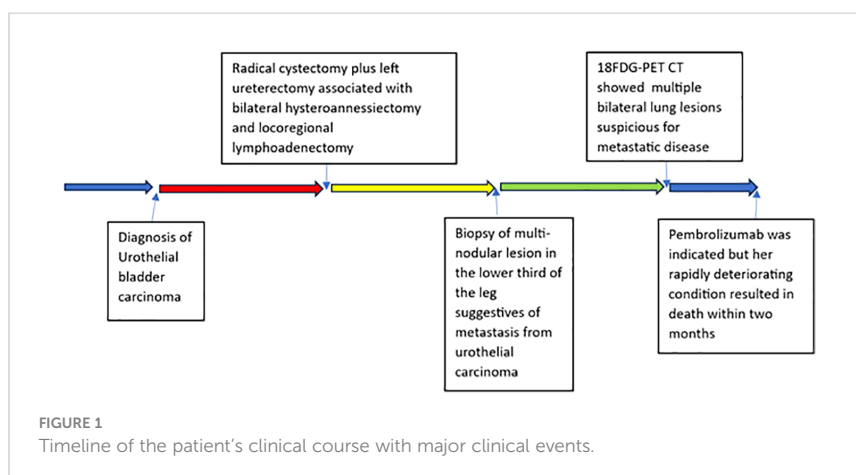
An Erratum on

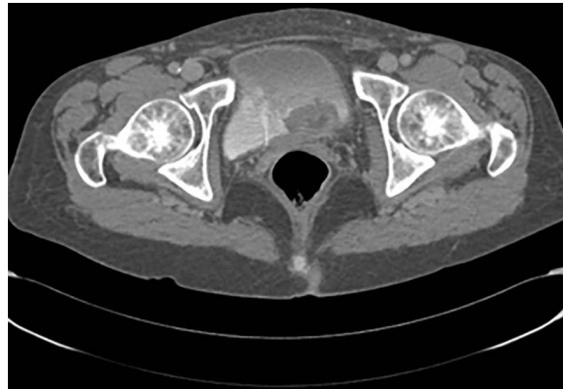
Nodular cutaneous metastasis of the leg in advanced urothelial bladder carcinoma: a case report and systematic literature review

by Izzo P, Izzo L, Lai S, D'Onghia G, Giancontieri P, Gabriele R, Polistena A, Sibio S, Costanzo ML, De Intinis C and Izzo S (2023) *Front. Oncol.* 13:1216725. doi: 10.3389/fonc.2023.1216725

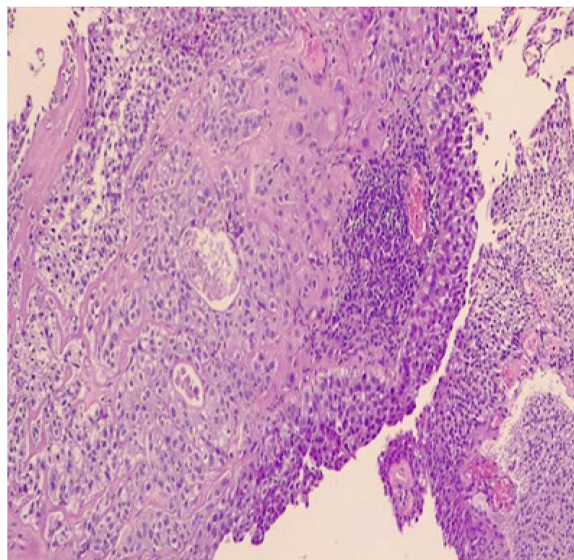
Due to a production error, there was a mistake in the figures as published. [Figure 1](#) was erroneously excluded, and what is now [Figure 3](#) was included as two separate figures. The corrected [Figures 1–3](#), and their captions, appear below.

The publisher apologizes for this mistake. The original version of this article has been updated.



**FIGURE 2**

Contrast-enhanced computed tomography scan of the pelvis showing lesions in trigone of bladder extending up to the left ureteral ostium.

**FIGURE 3**

Enlarged lower third of the leg. Clinical appearance of multi-nodular lesion, biopsy showed cutaneous metastasis urothelial carcinoma. Microscopic view of biopsy specimen shows subcutaneous infiltration of urothelial cell carcinoma.