



A Nomogram to Predict Survival in Patients With Locoregional Recurrent Nasopharyngeal Carcinoma Receiving Comprehensive Treatment

OPEN ACCESS

Ying-Hong Wei^{1,2†}, Ying Wang^{1,2†}, He Li^{1,2}, Chi-jie Wang³, Song-Ran Liu^{1,4}, Zi-Lu Huang^{1,2}, Guan-Nan Wang^{1,5}, Ya-Lan Tao^{1,2*} and Yun-Fei Xia^{1,2*}

Edited by:

Jason Chia-Hsun Hsieh,
New Taipei Municipal TuCheng
Hospital, Taiwan

Reviewed by:

Shau-Hsuan Li,
Kaohsiung Chang Gung Memorial
Hospital, Taiwan
Hsiang-Fong Kao,
National Taiwan University Hospital,
Taiwan

*Correspondence:

Yun-Fei Xia
xiayf@sysucc.org.cn
Ya-Lan Tao
taoyl@sysucc.org.cn

[†]These authors have contributed
equally to this work

Specialty section:

This article was submitted to
Head and Neck Cancer,
a section of the journal
Frontiers in Oncology

Received: 09 March 2022

Accepted: 16 May 2022

Published: 16 June 2022

Citation:

Wei Y-H, Wang Y, Li H,
Wang C-j, Liu S-R, Huang Z,
Wang G-N, Tao Y-L and Xia Y-F
(2022) A Nomogram to Predict
Survival in Patients With Locoregional
Recurrent Nasopharyngeal Carcinoma
Receiving Comprehensive Treatment.
Front. Oncol. 12:892510.
doi: 10.3389/fonc.2022.892510

¹ State Key Laboratory of Oncology in South China, Collaborative Innovation Center for Cancer Medicine, Guangdong Key Laboratory of Nasopharyngeal Carcinoma Diagnosis and Therapy, Sun Yat-sen University Cancer Center, Guangzhou, China, ² Department of Radiation Oncology, Sun Yat-sen University Cancer Center, Guangzhou, China, ³ Medical Statistics, School of Public Health, Sun Yat-sen University, Guangzhou, China, ⁴ Department of Pathology, Sun Yat-sen University Cancer Center, Guangzhou, China, ⁵ Department of Head & Neck Surgery, Sun Yat-sen University Cancer Center, Guangzhou, China

Objective: This study aimed to establish a prognostic stratified model of chemotherapy-based comprehensive treatment for patients with locoregional recurrent nasopharyngeal carcinoma (lrNPC), to help individualized treatment decision-making.

Materials and Methods: This study retrospectively reviewed patients with lrNPC who received chemotherapy-based comprehensive treatment from January 1, 2010, to December 31, 2018. A total of 422 eligible patients were divided into test (n = 338) and validation (n = 84) cohorts. A LASSO cox regression model was used to identify significant prognostic factors for overall survival (OS) in the test cohort. A nomogram was then developed based on a combined consideration of clinically meaningful prognostic factors and statistically significant prognostic factors. The performance of the nomogram was assessed with Harrell's concordance index (C-index) and calibration plots.

Results: Five significant factors were identified: age, albumin (ALB), T stage after recurrent (rT), neutrophil to lymphocyte ratio (NLR), and systematic immune-inflammation index (SII). The nomogram was established with these five factors. C-index was 0.636 in the test cohort and 0.610 in the validation cohort. The calibration curves for the OS rate at 3, and 5 years showed an excellent agreement in both cohorts. In addition, the corresponding risk classification system successfully classified patients into low- and high-risk groups and performed well in stratification (P < 0.001).

Conclusions: The nomogram shows well prognostic performance for lrNPC patients receiving chemotherapy-based comprehensive treatment.

Keywords: recurrent nasopharyngeal carcinoma, prognostic stratification, nomogram, inflammation-nutritional markers, comprehensive treatment

INTRODUCTION

Nasopharyngeal carcinoma (NPC) is one of the most common malignant cancers in the east and southeast Asia and is highly sensitive to radiation (1, 2). However, about 10%-15% of patients experience locoregional recurrence after primary treatment (3, 4). For patients with locoregional recurrent nasopharyngeal carcinoma without distant metastasis (lrNPC), treatment strategies are mainly divided into three types: surgery, re-irradiation, and chemotherapy-based comprehensive treatment. Surgery and re-irradiation are limited due to the initial treatment and complex structure of the nasopharynx (5, 6), so chemotherapy-based comprehensive treatment, is a better choice for lrNPC and confers survival benefits by increasing the local control rate and eradicating micrometastases (7).

Accurate prognostic stratification is critical for therapeutic decisions making. Most studies constructed the prognostic stratification models in lrNPC mainly focused on patients treated with surgery or re-irradiation after recurrence, there are few studies on the prognosis prediction of chemotherapy-based comprehensive treatment (8, 9). In addition, doctors make chemotherapy-based comprehensive treatment strategy were based on individualized judgement and patient characteristics, which is short of quantifiable criteria. Therefore, it is necessary to find good prognostic indicators and establish a prognostic stratification model for chemotherapy-based comprehensive treatment.

Inflammation is considered to be cancer-initiating factors and participate in the entire process of cancer development (10). NPC is a well-recognized inflammatory cancer, adding inflammatory factors to the prognostic stratification system can help to improve the sensitivity of prognostic stratification. Among the established cancers, there is increasing evidence that cancer-related inflammation, tumor stage, and clinical condition jointly affect the prognosis of patients (11). The general nutritional condition of the patients with recurrence is worse than before, and many patients are even difficult to receive anti-recurrent treatment due to poor nutritional condition, so the nutritional indicators are critical for lrNPC patients. However, most of these markers were evaluated separately, so we collected as many prognostic biomarkers as possible, assessed the value of these biomarkers, and chose the optimal ones to construct a prognostic stratification model, aiming to refine patient stratification conveniently and efficiently.

MATERIALS AND METHODS

Study Cohort

We retrospectively reviewed a consecutive cohort of 840 patients with histologically confirmed NPC who recurrent after curative radiotherapy and had been treated at the Sun Yat-sen University Cancer Center from January 2010 through December 2018. Patients who met the following criteria were enrolled in the study: histologically confirmed lrNPC; had received chemotherapy-based comprehensive treatment. Patients were excluded if they were in the following situation: had tumor metastasis or other malignant tumors; a surgical alone treatment; a re-irradiation alone treatment; a chemotherapy alone treatment;

incomplete information. The study was approved by the Institutional Review Board of Sun Yat-sen University Cancer Center (B2021-057-01), and informed consent was waived.

Restaging After Recurrence

Imaging data of patients, including but not limited to, MRI of the nasopharynx and neck, X-ray or CT of chest, ultrasound or CT of the abdomen, whole-body bone scan or whole-body PET-CT were collected at the time of diagnosis of recurrence. MRI images were independently evaluated by two radiologists, and then restaging according to the criteria of the eighth edition of the tumor-node-metastasis (TNM) stage system by two clinicians specializing in nasopharyngeal carcinoma. Any differences were resolved by consensus.

Treatment

For patients with lrNPC, there are many options recommended by NCCN guideline for chemotherapy-based comprehensive treatment, the choice of chemotherapy regimen was administered at the physician's judgment and the patient's consent. In the study cohort, chemotherapy regimens had been collected as follows: docetaxel plus cisplatin plus 5-fluorouracil (TPF), docetaxel plus cisplatin (TP), gemcitabine plus cisplatin (GP), and cisplatin plus 5-fluorouracil (PF). 21 days a cycle. Radiotherapy, molecular-targeted therapy, and immune checkpoint therapy were permitted in the cohort.

Data Collection

Demographic, clinical, and laboratory data before receiving chemotherapy were collected. Demographic data included age at recurrence, sex, and smoke state. Clinical data included TNM category after recurrence (rTNM), body mass index (BMI), and over survival (OS). OS was measured from the date of diagnosis for recurrence to the date of death or last follow-up (December 31, 2020). Laboratory data including white blood cells (WBC), lymphocyte (LYM), neutrophils (NEU), hemoglobin (HGB), platelets (PLT), monocytes (MONO), lactate dehydrogenase (LDH), and albumin (ALB) were collected. And neutrophil to lymphocyte ratio (NLR), platelet to lymphocyte ratio (PLR), lymphocyte to monocyte ratio (LMR), systemic inflammatory response index (SIRI), systematic immune-inflammation index (SII), prognostic nutritional index (PNI), and advanced lung cancer inflammation index (ALI) had been calculated as follows:

$$\text{NLR} = \text{neutrophils/lymphocytes};$$

$$\text{PLR} = \text{platelets/lymphocytes};$$

$$\text{LMR} = \text{lymphocytes / monocyte};$$

$$\text{SIRI} = \text{neutrophils} \times \text{monocytes/lymphocytes};$$

$$\text{SII} = \text{neutrophils} \times \text{platelets/lymphocytes};$$

$$\text{PNI} = \text{Albumin} + 5 \times \text{lymphocytes};$$

Statistical Analysis

The whole cohort was randomly divided into test set and validation set in a proportion of 8:2. Demographic, clinical, and laboratory data of all patients in the test cohort were analyzed for association with OS by using LASSO cox regression. The variables for the selected minimum lambda chosen by fivefold cross-validation were included in the multivariable model for building of the nomogram. The predictive accuracy of the nomogram was assessed by Harrell's concordance index (C-index) and calibration plots in both the test and the validation set. Overall survival rates were calculated using the Kaplan-Meier method, and the log-rank test was used to perform comparisons between groups. HRs and 95% CIs were calculated with an unstratified Cox proportional hazards model. The cut-off values of LDH, WBC, LYM, NEU, HGB, PLT, MONO, and ALB were based on our hospital's test threshold, which was based on "CLSI Defining, Establishing and Verifying Reference Ranges in the Clinical Laboratory", the study of Ichihara K on derivation of reference intervals (12), and quality control requirements of our hospital laboratory equipment. The cut-off value of BMI was from the study of Krishnan Bhaskaran on 3.6 million adults (13), the cut-off values of age, NLR, PLR, LMR, SIRI, SII, PNI, and ALI were calculated for over survival by X-tile (14), the cut-off values of points were calculated by the median value. Two-tailed P-values < 0.05 were considered statistically significant. All statistical analyses were performed using SPSS 25.0 (Chicago, IL, USA) and R Studio v1.4.1106.

RESULTS

Patient Characteristics and Survival

Between Jan 1, 2010, and Dec 31, 2018, a total of 422 patients met the criterion were identified in the study. The male (n = 328)-to-female (n = 94) ratio was 3.5:1. The median age was 46.5 years and most of the patients were non-smokers.

According to TNM stage system, 157 (37.2%) patients were rT0 to rT2, 135 (32.0%) were rT3, 130 (30.8%) were rT4. For the N stage, 219 (51.9%) patients had rN negative (rN0), 203 (48.1%) patients had rN positive (rN1-rN3). All patients received chemotherapy-based comprehensive treatment, 118 patients receiving GP, 97 patients receiving PF, 123 patients receiving TP, 84 patients receiving TPF. All patients received radiotherapy, 118 patients received targeted therapy (69 received Nitozumab, 3 received Apatinib, 12 received Cetuximab, 9 received Avastin, 25 received Endostatin), 8 patients received immunotherapy (2 received atezolizumab, 1 received pembrolizumab, 5 received toripalimab). This was showed in **Table S1**. The difference in survival among the different treatment groups was shown in **Figure S1**. 338 patients were assigned to the test set and the remaining 84 patients were assigned to the validation set. Detailed clinical characteristics of patients from the test and validation sets were summarized in **Table 1**. In the test group, the median follow-up was 4.21 (95%CI, 3.64-4.78) years, while the median OS was 3.78 (95%CI, 3.18-4.39) years, the 5-year OS rate was 39.9%, a total of 167 (49.7%) patients died at the end of the follow-up. In the validation group, the median follow-up was 4.62 (95%CI, 3.07-

TABLE 1 | Baseline characteristics of patients.

Characteristic	Patients, No (%)		
	Total (N=422)	Test set (N=338)	Validation set (N=84)
Sex			
Male	328 (77.7)	257 (76.0)	71 (84.5)
Female	94 (22.3)	81 (24.0)	13 (15.5)
Age (years)			
≤55	341 (80.8)	275 (81.4)	66 (78.6)
>55	81 (19.2)	63 (18.6)	18 (21.4)
Smoker			
Yes	327 (77.5)	266 (78.7)	61 (72.6)
No	95 (22.5)	72 (21.3)	23 (27.4)
rT classification ^a			
rT0-rT2	157 (37.2)	117 (34.6)	40 (47.6)
rT3	135 (32.0)	111 (32.8)	24 (28.6)
rT4	130 (30.8)	110 (32.6)	20 (23.8)
rN classification ^a			
rN0	219 (51.9)	180 (53.3)	39 (46.4)
rN1-rN3	203 (48.1)	158 (46.7)	45 (53.6)
BMI (Kg/m ²)			
≤21	147 (34.8)	120 (35.5)	27 (32.1)
>21	275 (65.2)	218 (64.5)	57 (67.9)
ALB (g/L)			
≤250	65 (15.4)	51 (15.1)	14 (16.7)
>250	357 (84.6)	287 (84.9)	70 (83.3)
LDH (U/L)			

(Continued)

TABLE 1 | Continued

Characteristic	Patients, No (%)		
	Total (N=422)	Test set (N=338)	Validation set (N=84)
≤250	402 (95.3)	320 (94.7)	82 (97.6)
>250	20 (4.7)	18 (5.3)	2 (2.4)
WBC (10 ⁹ /L)			
≤9.5	394 (93.4)	315 (93.2)	79 (94.0)
>9.5	28 (6.6)	23 (6.8)	5 (6.0)
LYM (10 ⁹ /L)			
≤1.1	191 (45.3)	151 (44.7)	40 (47.6)
>1.1	231 (54.7)	187 (55.3)	44 (52.4)
NEU (10 ⁹ /L)			
≤6.3	378 (89.6)	302 (89.3)	76 (90.5)
>6.3	44 (10.4)	36 (10.7)	8 (9.5)
HGB (10 ⁹ /L)			
≤130	146 (34.6)	119 (35.2)	27 (32.1)
>130	276 (65.4)	219 (64.8)	57 (67.9)
PLT (10 ⁹ /L)			
≤100	3 (0.7)	3 (0.9)	0 (0.00)
>100	419 (99.3)	335 (99.1)	84 (100.00)
MONO (10 ⁹ /L)			
≤0.6	385 (91.2)	306 (90.5)	79 (94.0)
>0.6	37 (8.8)	32 (9.5)	5 (6.0)
PLR			
≤307.14	351 (83.2)	281 (83.1)	70 (83.3)
>307.14	71 (16.8)	57 (16.9)	14 (16.7)
LMR			
≤2.28	110 (26.1)	89 (26.3)	21 (25.0)
>2.28	312 (73.9)	249 (73.7)	63 (75.0)
NLR			
≤2.75	144 (34.1)	116 (34.3)	28 (33.3)
>2.75	278 (65.9)	222 (65.7)	56 (66.7)
SIRI			
≤1.96	320 (75.8)	253 (74.9)	67 (79.8)
>1.96	102 (24.2)	85 (25.1)	17 (20.2)
SII			
≤578.85	140 (33.2)	112 (33.1)	28 (33.3)
>578.85	282 (66.8)	226 (66.9)	56 (66.7)
PNI			
≤50.45	219 (51.9)	177 (52.4)	42 (50.0)
>50.45	203 (48.1)	161 (47.6)	42 (50.0)
ALI			
≤341.57	265 (62.8)	214 (63.3)	51 (60.7)
>341.57	157 (37.2)	124 (36.7)	33 (39.3)

^aAccording to the 8th edition of the AJCC/UICC stage system. rT0–rT2 and rN1–rN3 were grouped together due to the small number of patients with those stage.

BMI, body mass index; ALB, albumin; LDH, lactate dehydrogenase; WBC, white blood cells; LYM, lymphocyte; NEU, neutrophils; HGB, hemoglobin; PLT, platelets; MONO, monocytes; PLR, platelet to lymphocyte ratio; LMR, lymphocyte to monocyte ratio. NLR, neutrophil to lymphocyte ratio; SIRI, systemic inflammatory response index; SII, systematic immune-inflammation index; PNI, prognostic nutritional index, ALI, advanced lung cancer inflammation index.

6.17) years, while the median OS was 3.36 (95%CI, 2.93–3.79) years, the 5-year OS rate was 27.7%, a total of 47 (56%) patients died at the end of the follow-up.

Independent Prognostic Factors Associated With OS

21 variables listed in **Table 1** were included in the LASSO cox regression for their association with OS in the test group (**Figure 1**), and it indicated the following prognostic factors: rT, NLR, and SII were independent risk factors. The coefficients for these features were calculated and shown in **Figure 1A**. The most prognostic covariates were selected by the lambda value

within one standard error from the minimum (λ_{1se}) to predict OS by fivefold cross-validation as presented in **Figure 1B**.

Construction and Assessment of the Nomogram Model

In order to better reflect the clinical prognostic value, clinically meaningful prognostic factors were also included in the construction. Taking clinical meaningful factor age and ALB into account, a nomogram with 5 independent prognostic factors that could predict the 3-, and 5-year OS was developed in the test cohort (**Figure 2**), and the predictive ability of this model was assessed by C-index, which was 0.636 in the test cohort and

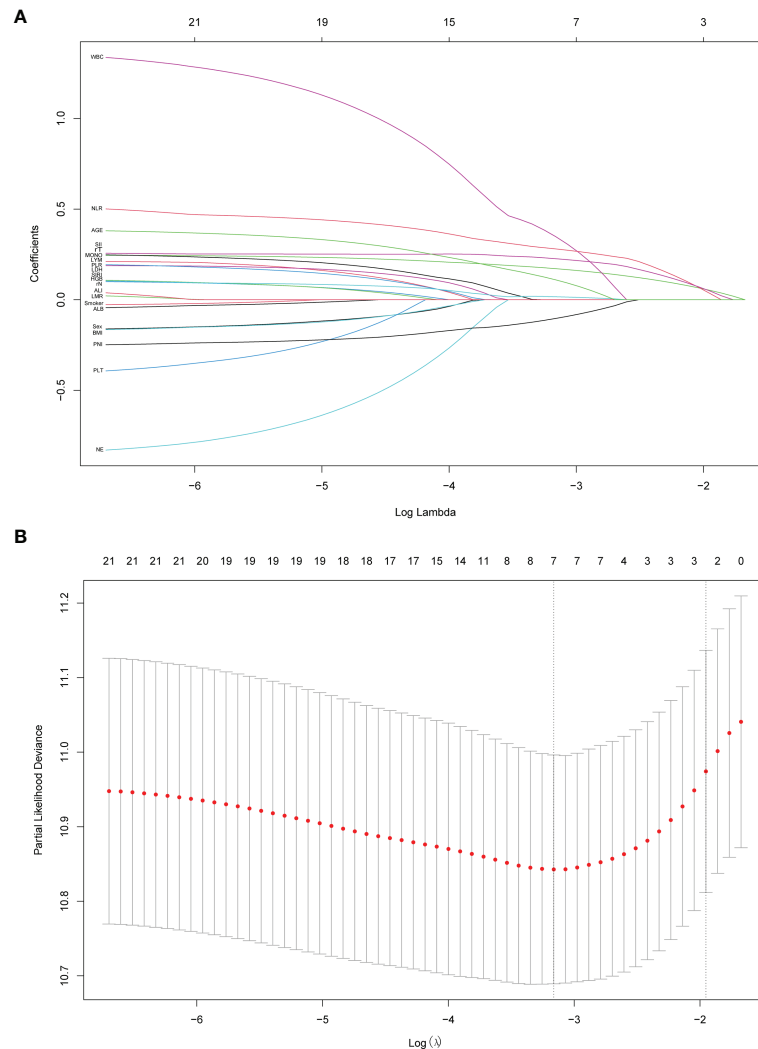


FIGURE 1 | Predictor variables selection using the least absolute shrinkage and selection operator (LASSO) binary cox regression model. **(A)** LASSO coefficient profiles of the 21 predictor variables. **(B)** Tuning parameter λ selection in the LASSO model used fivefold cross-validation. Dotted vertical lines were drawn at the optimal values by using the minimum criteria (λ_{\min}) and the 1 standard error of the minimum criteria (the 1-SE criteria, λ_{1se}). λ_{1se} value of 0.142 was chosen and screened out three optimal predictors. The figures were created using R Studio software v1.4.1106.

0.610 in the validation cohort. The calibration plots adjusted by bootstrapping with 1,000 samples were used to evaluate the performance of the nomogram graphically (**Figure 3**). The calibration curves for the OS rate at 3, and 5 years in the test cohort and the validation cohort overlapped well with reference lines demonstrating excellent performance of the nomogram.

Prognostic Risk Stratification

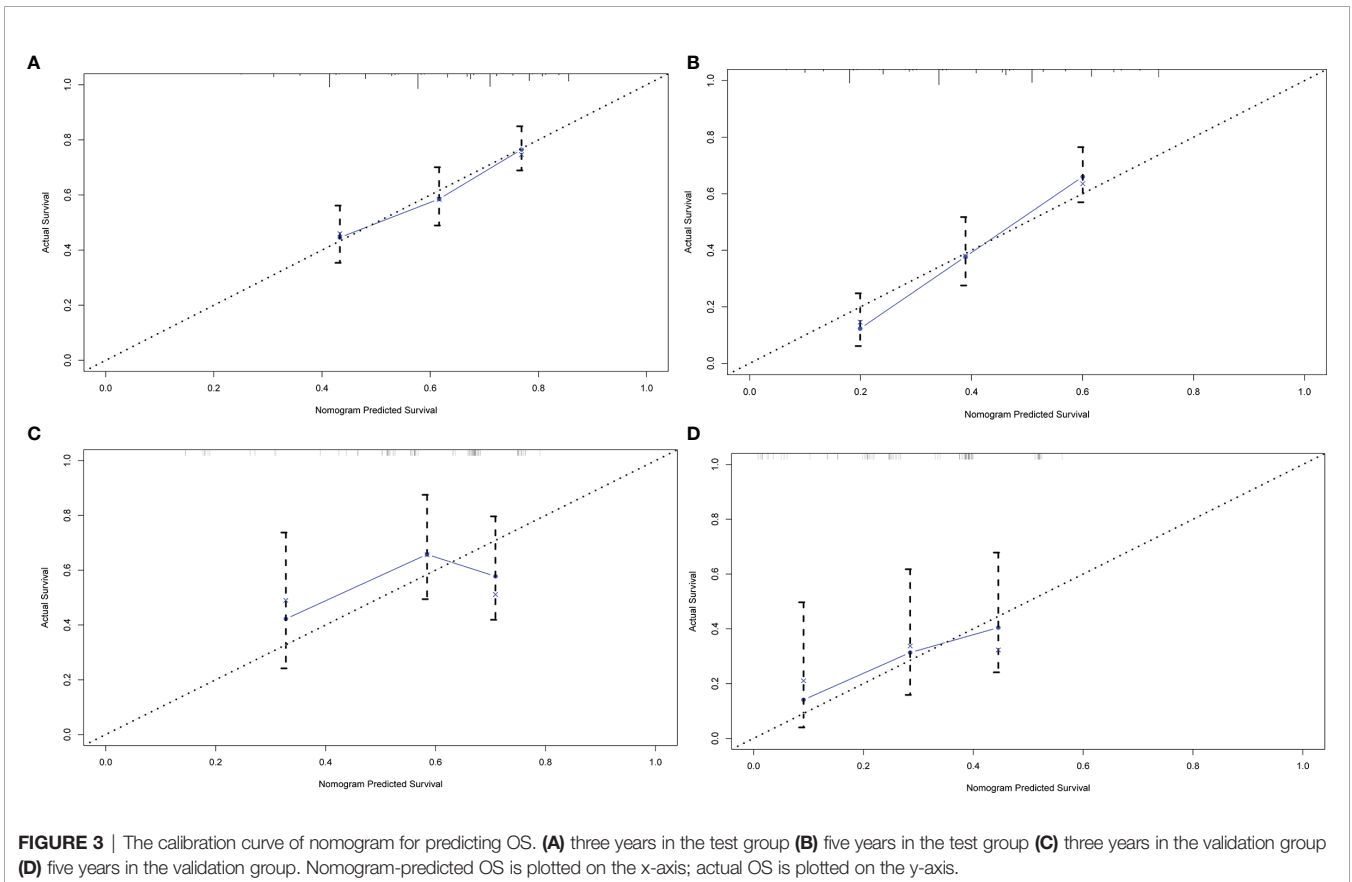
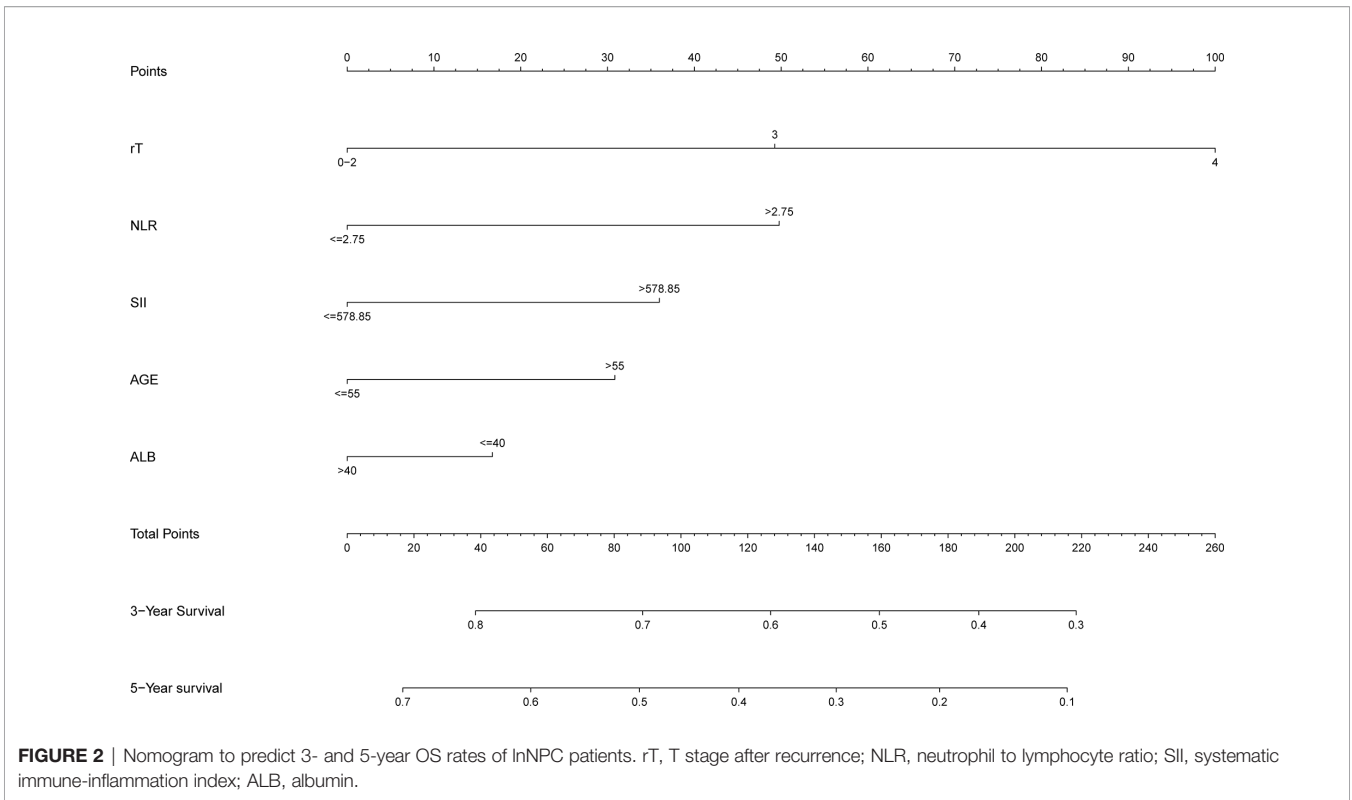
By using the nomogram established, the detailed score of the 422 patients was calculated. The median score was 52.05 and the difference between each patient's score and the median was shown in **Figure 4A**. Using the median score as the cutoff value, all patients were divided into high-risk groups and low-risk groups. Patients in high-risk group (≥ 52.05) had worse overall survival in comparison with the patients in low-risk

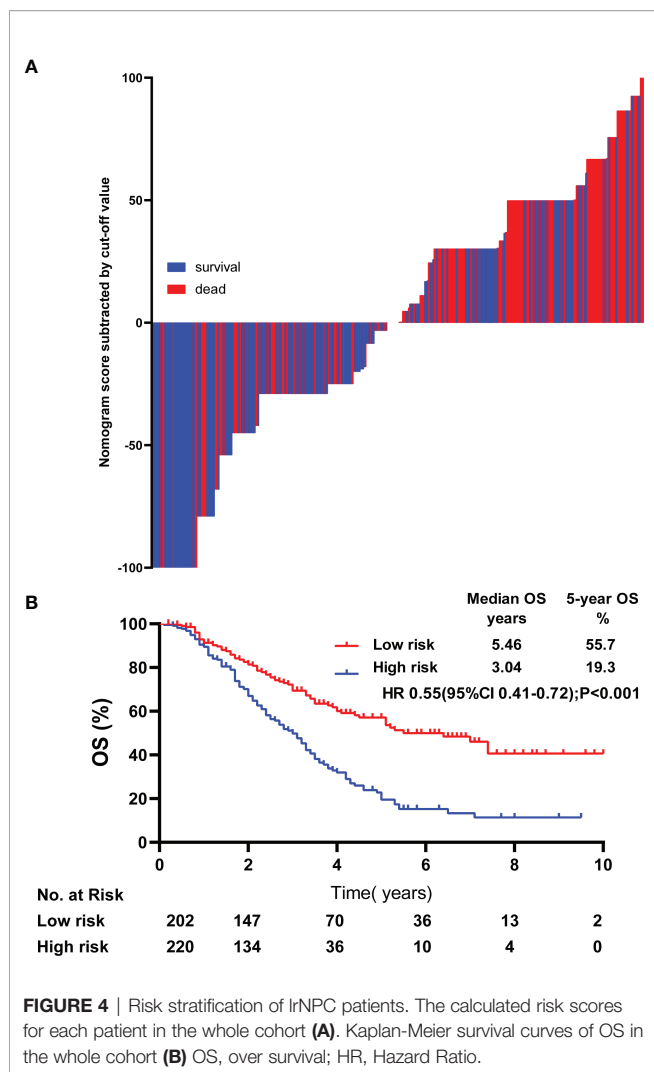
group (< 52.05), ($P < 0.001$, HR: 0.55, 95% CI: 0.41-0.72, **Figure 4B**).

DISCUSSION

In this study, we established a prognostic stratified model for lrNPC to help oncologists make treatment decisions. By applying this model, high-risk patients could increase the treatment intensity, and low-risk patients could reduce the treatment intensity, effectively avoiding over-treatment and under-treatment.

Currently, therapeutic decisions making and prognostic stratification for NPC are based on TNM stage system, and patients are stratified according to the anatomical region. Instead of full consideration of the biological heterogeneity of





cancer (15), this is often insufficient for prognostic stratification and individualized treatment. In addition, the stage system of recurrence uses the TNM stage, which is the same system for initial diagnosed NPC, and this would decrease the accuracy of the prognostic stratification (16, 17). For recurrent patients, accurate prognostic stratification and individualized treatment are very important (18, 19). The structure of the nasopharynx has changed after primary treatment, as well as the receptivity to anti-recurrence treatment. This increased the difficulty for clinicians to choose effective treatment measures, and clinicians need to consider the efficacy as well as side effects more carefully. In our study, prognostic factors were identified based on analysis of patients with lrNPC, and individual prognostic risk scores were calculated for risk stratification. The prediction of OS in low-risk group patients was significantly better than that in high-risk group patients, suggesting that our model performed well in prognostic stratification of patients with lrNPC.

Cancer biology is constantly shifting from a “cancer cell-centric” view to a broader concept that places inflammation as a cancer biomarker, the key role of inflammation in carcinogenic

process has attracted attention (20), and inflammation is a recognized hallmark of cancer, which greatly promotes the development of cancer (21). Inflammation can affect both the treatment response and prognosis in cancers (22–25), and this had been confirmed in many clinical studies of different cancer types (26–32). The study of Leggas M in patients with non-small cell lung cancer proved that intensive anti-inflammatory therapy can improve the efficacy of chemotherapy drugs, reduce blood toxicity, and change the pharmacokinetics of drugs (33). In the past few years, a number of systemic inflammation markers have been used as prognostic predictors, and there are also a lot of studies that have confirmed the value of these indicators in predicting the prognosis of different solid tumors (34–37). Considering the accessibility, ease of use, and economic cost of these markers, 15 common blood-related markers were selected in our study, and through further screening, 2 blood-related prognostic factors were selected to construct the nomogram.

ALB was also added as a prognostic factor in constructing the nomogram in our study. According to the latest studies, ALB is strongly associated with all-cause mortality, including cancer, cardiovascular diseases, and respiratory diseases, and lower ALB is associated with an increased risk of death (38–42). This is further confirmed in all cancer types, The studies in cervical carcinoma and vulvar squamous cell carcinoma had proved the value of nutritional indicators as independent risk factors (31, 43). And ALB reduction has been independently shown to be closely related to precachexia/cachexia body composition, which indicated a worse prognosis and higher mortality (44–46). The results of our study were therefore consistent with previous research conclusions.

This study has several advantages. Firstly, most of the current studies only focus on partial inflammation markers, in our study, we had conducted a systematic and comprehensive analysis of all markers which have been proven to have predictive value in various studies, and screened out the factors combined with the highest predictive power to help clinical decision-making. Secondly, for the risk stratification of patients with recurrence, You R and his colleague established a special stratification system for operable patients (9). For inoperable patients, chemotherapy-based comprehensive treatment is the main treatment option but is short of specialized stratification systems. To the best of our knowledge, this study collected the largest number of patients who have been treated with chemotherapy-based comprehensive treatment after recurrence. Additionally, the markers selected in this study can be obtained from routine clinical examinations, which do not increase the economic burden on patients. At the same time, these markers have high accessibility and universality, and can be routinely available in any hospital.

Besides these strengths, this study has some limitations: firstly, as a retrospective study, we could not collect all information, such as Epstein-Barr Virus DNA or C-reactive protein (47, 48), whether there is a better factor combination in predicting OS remains to be ascertained. Secondly, all the data came from our institution, so sample bias may exist. However, it should not influence the results, as the cohort consisted of large sample size and all eligible patients were consecutively enrolled.

CONCLUSIONS

In conclusion, we established a prognostic stratification model for lRNPC patients who received chemotherapy-based comprehensive treatment, and we hope that our work can help clinicians develop individualized and accurate treatment strategies.

DATA AVAILABILITY STATEMENT

The raw data supporting the conclusions of this article will be made available by the authors, without undue reservation.

ETHICS STATEMENT

The studies involving human participants were reviewed and approved by Institutional Review Board of Sun Yat-sen University Cancer Center. Written informed consent for participation was not required for this study in accordance with the national legislation and the institutional requirements.

AUTHOR CONTRIBUTIONS

Study concept: YW,YT,Y-FX. Data acquisition: All authors. Statistical analysis and writing of manuscript: YW, YW. Supervision: Y-FX, YT. Manuscript review: All authors. All

authors listed have made a substantial, direct, and intellectual contribution to the work and approved it for publication.

FUNDING

The study was supported by the Guangdong Hong-Kong Technology Cooperation Funding Science (No. 2021A0505110010), National Natural Science Foundation of China (No. 82103437), and Chinese Postdoctoral Science Foundation (No. 2021M693649).

SUPPLEMENTARY MATERIAL

The Supplementary Material for this article can be found online at: <https://www.frontiersin.org/articles/10.3389/fonc.2022.892510/full#supplementary-material>

Supplementary Figure 1 | Over survival in different treatment groups. **(A)** Difference in survival among populations with different radiotherapy conditions. Radiotherapy concurrent with chemotherapy vs. radiotherapy plus chemotherapy, $p=0.910$ **(B)** Difference in survival among populations with different chemotherapy regimens GP vs. TP, $p=0.436$; GP vs. TPF, $p=0.905$; GP vs. PF, $p=0.331$ **(C)** Difference in survival among populations with different targeted therapy conditions. received targeted therapy vs. without received targeted therapy, $p=0.230$; **(D)** Difference in survival among populations with different immunotherapy conditions. received immunotherapy vs. without received immunotherapy, $p=0.196$; 2-tailed α risk is 0.05.

Supplementary Table 1 | Treatment of Patients. GP,gemcitabine plus cisplatin; PF, cisplatin plus 5-fluorouracil; TP, docetaxel plus cisplatin; TPF, docetaxel plus cisplatin plus 5-fluorouracil.

REFERENCES

- Bray F, Ferlay J, Soerjomataram I, Siegel RL, Torre LA, Jemal A. Global Cancer Statistics 2018: GLOBOCAN Estimates of Incidence and Mortality Worldwide for 36 Cancers in 185 Countries. *CA: Cancer J Clin* (2018) 68 (6):394–424. doi: 10.3322/caac.21492
- Liu Z, Chen Y, Su Y, Hu X, Peng X. Nasopharyngeal Carcinoma: Clinical Achievements and Considerations Among Treatment Options. *Front Oncol* (2021) 11:635737. doi: 10.3389/fonc.2021.635737
- Mao YP, Tang LL, Chen L, Sun Y, Qi ZY, Zhou GQ, et al. Prognostic Factors and Failure Patterns in non-Metastatic Nasopharyngeal Carcinoma After Intensity-Modulated Radiotherapy. *Chin J Cancer* (2016) 35(1):103. doi: 10.1186/s40880-016-0167-2
- Zhang MX, Li J, Shen GP, Zou X, Xu JJ, Jiang R, et al. Intensity-Modulated Radiotherapy Prolongs the Survival of Patients With Nasopharyngeal Carcinoma Compared With Conventional Two-Dimensional Radiotherapy: A 10-Year Experience With a Large Cohort and Long Follow-Up. *Eur J Cancer (Oxford Engl 1990)* (2015) 51(17):2587–95. doi: 10.1016/j.ejca.2015.08.006
- Kong F, Zhou J, Du C, He X, Kong L, Hu C, et al. Long-Term Survival and Late Complications of Intensity-Modulated Radiotherapy for Recurrent Nasopharyngeal Carcinoma. *BMC Cancer* (2018) 18(1):1139. doi: 10.1186/s12885-018-5055-5
- Chen YP, Chan ATC, Le QT, Blanchard P, Sun Y, Ma J. Nasopharyngeal Carcinoma. *Lancet (London England)* (2019) 394(10192):64–80. doi: 10.1016/s0140-6736(19)30956-0
- Lee AWM, Ng WT, Chan JYW, Corry J, Mäkitie A, Mendenhall WM, et al. Management of Locally Recurrent Nasopharyngeal Carcinoma. *Cancer Treat Rev* (2019) 79:101890. doi: 10.1016/j.ctrv.2019.101890
- Li YQ, Tian YM, Tan SH, Liu MZ, Kusumawidjaja G, Ong EHW, et al. Prognostic Model for Stratification of Radioresistant Nasopharynx Carcinoma to Curative Salvage Radiotherapy. *J Clin Oncol* (2018) 36 (9):891–9. doi: 10.1200/jco.2017.75.5165
- You R, Zou X, Wang SL, Jiang R, Tang LQ, Zhang WD, et al. New Surgical Staging System for Patients With Recurrent Nasopharyngeal Carcinoma Based on the AJCC/UICC rTNM Classification System. *Eur J Cancer (Oxford Engl 1990)* (2015) 51(13):1771–9. doi: 10.1016/j.ejca.2015.05.014
- Grivennikov SI, Gretten FR, Karin M. Immunity, Inflammation, and Cancer. *Cell* (2010) 140(6):883–99. doi: 10.1016/j.cell.2010.01.025
- Diakos CI, Charles KA, McMillan DC, Clarke SJ. Cancer-Related Inflammation and Treatment Effectiveness. *Lancet Oncol* (2014) 15(11):e493–503. doi: 10.1016/s1470-2045(14)70263-3
- Ichihara K, Boyd JC. An Appraisal of Statistical Procedures Used in Derivation of Reference Intervals. *Clin Chem Lab Med* (2010) 48(11):1537–51. doi: 10.1515/cclm.2010.319
- Bhaskaran K, Dos-Santos-Silva I, Leon DA, Douglas IJ, Smeeth L. Association of BMI With Overall and Cause-Specific Mortality: A Population-Based Cohort Study of 3.6 Million Adults in the UK. *Lancet Diabetes Endocrinol* (2018) 6(12):944–53. doi: 10.1016/s2213-8587(18)30288-2
- Camp RL, Dolled-Filhart M, Rimm DL. X-Tile: A New Bio-Informatics Tool for Biomarker Assessment and Outcome-Based Cut-Point Optimization. *Clin Cancer Res* (2004) 10(21):7252–9. doi: 10.1158/1078-0432.Ccr-04-0713
- Passaro A, Brahmer J, Antonia S, Mok T, Peters S. Managing Resistance to Immune Checkpoint Inhibitors in Lung Cancer: Treatment and Novel Strategies. *J Clin Oncol* (2022) 40(6):598–610. doi: 10.1200/jco.21.01845
- Han F, Zhao C, Huang SM, Lu LX, Huang Y, Deng XW, et al. Long-Term Outcomes and Prognostic Factors of Re-Irradiation for Locally Recurrent Nasopharyngeal Carcinoma Using Intensity-Modulated Radiotherapy. *Clin Oncol (Royal Coll Radiol (Great Britain))* (2012) 24(8):569–76. doi: 10.1016/j.clon.2011.11.010
- Hua YJ, Han F, Lu LX, Mai HQ, Guo X, Hong MH, et al. Long-Term Treatment Outcome of Recurrent Nasopharyngeal Carcinoma Treated With

- Salvage Intensity Modulated Radiotherapy. *Eur J Cancer (Oxford Engl 1990)* (2012) 48(18):3422–8. doi: 10.1016/j.ejca.2012.06.016
18. Yang X, Ren H, Yu W, Zhang X, Sun Y, Shao Y, et al. Analysis of Clinical Target Volume Delineation in Local-Regional Failure of Nasopharyngeal Carcinoma After Intensity-Modulated Radiotherapy. *J Cancer* (2020) 11(7):1968–75. doi: 10.7150/jca.39588
 19. Tian YM, Liu MZ, Zeng L, Bai L, Lin CG, Huang SM, et al. Long-Term Outcome and Pattern of Failure for Patients With Nasopharyngeal Carcinoma Treated With Intensity-Modulated Radiotherapy. *Head Neck* (2019) 41(5):1246–52. doi: 10.1002/hed.25545
 20. Geh D, Leslie J, Rumney R, Reeves HL, Bird TG, Mann DA. Neutrophils as Potential Therapeutic Targets in Hepatocellular Carcinoma. *Nat Rev Gastroenterol Hepatol* (2022) 19(4):257–73. doi: 10.1038/s41575-021-00568-5
 21. Hanahan D, Weinberg RA. Hallmarks of Cancer: The Next Generation. *Cell* (2011) 144(5):646–74. doi: 10.1016/j.cell.2011.02.013
 22. Zilionis R, Engblom C, Pfirschke C, Savova V, Zemmour D, Saatcioglu HD, et al. Single-Cell Transcriptomics of Human and Mouse Lung Cancers Reveals Conserved Myeloid Populations Across Individuals and Species. *Immunity* (2019) 50(5):1317–34.e10. doi: 10.1016/j.immuni.2019.03.009
 23. Rosenthal R, Cadieux EL, Salgado R, Bakir MA, Moore DA, Hiley CT, et al. Neantigen-Directed Immune Escape in Lung Cancer Evolution. *Nature* (2019) 567(7749):479–85. doi: 10.1038/s41586-019-1032-7
 24. McGranahan N, Swanton C. Cancer Evolution Constrained by the Immune Microenvironment. *Cell* (2017) 170(5):825–7. doi: 10.1016/j.cell.2017.08.012
 25. Koebel CM, Vermi W, Swann JB, Zerafa N, Rodig SJ, Old LJ, et al. Adaptive Immunity Maintains Occult Cancer in an Equilibrium State. *Nature* (2007) 450(7171):903–7. doi: 10.1038/nature06309
 26. Jin Y, Ye X, Shao L, Lin BC, He CX, Zhang BB, et al. Serum Lactic Dehydrogenase Strongly Predicts Survival in Metastatic Nasopharyngeal Carcinoma Treated With Palliative Chemotherapy. *Eur J Cancer (Oxford Engl 1990)* (2013) 49(7):1619–26. doi: 10.1016/j.ejca.2012.11.032
 27. Szkander J, Gerger A, Liegl-Atzwanger B, Absenger G, Stotz M, Friesenbichler J, et al. The Lymphocyte/Monocyte Ratio Predicts Poor Clinical Outcome and Improves the Predictive Accuracy in Patients With Soft Tissue Sarcomas. *Int J Cancer* (2014) 135(2):362–70. doi: 10.1002/ijc.28677
 28. Tan D, Fu Y, Su Q, Wang H. Prognostic Role of Platelet-Lymphocyte Ratio in Colorectal Cancer: A Systematic Review and Meta-Analysis. *Medicine* (2016) 95(24):e3837. doi: 10.1097/md.00000000000003837
 29. Li S, Lan X, Gao H, Li Z, Chen L, Wang W, et al. Systemic Inflammation Response Index (SIRI), Cancer Stem Cells and Survival of Localised Gastric Adenocarcinoma After Curative Resection. *J Cancer Res Clin Oncol* (2017) 143(12):2455–68. doi: 10.1007/s00432-017-2506-3
 30. Jomrich G, Gruber ES, Winkler D, Hollenstein M, Gnatt M, Sahara K, et al. Systemic Immune-Inflammation Index (SII) Predicts Poor Survival in Pancreatic Cancer Patients Undergoing Resection. *J Gastrointest Surg* (2020) 24(3):610–8. doi: 10.1007/s11605-019-04187-z
 31. Yang X, An J, Zhang Y, Yang Y, Chen S, Huang M, et al. Prognostic Nomograms Predicting Survival in Patients With Locally Advanced Cervical Squamous Cell Carcinoma: The First Nomogram Compared With Revised FIGO 2018 Staging System. *Front Oncol* (2020) 10:591700. doi: 10.3389/fonc.2020.591700
 32. Nydegger A, Novak U, Kronig MN, Legros M, Zeerleder S, Banz Y, et al. Transformed Lymphoma Is Associated With a Favorable Response to CAR-T-Cell Treatment in DLBCL Patients. *Cancers* (2021) 13(23):6073. doi: 10.3390/cancers13236073
 33. Leggas M, Kuo KL, Robert F, Cloud G, deShazo M, Zhang R, et al. Intensive Anti-Inflammatory Therapy With Dexamethasone in Patients With non-Small Cell Lung Cancer: Effect on Chemotherapy Toxicity and Efficacy. *Cancer Chemother Pharmacol* (2009) 63(4):731–43. doi: 10.1007/s00280-008-0767-x
 34. Offi C, Romano RM, Cangiano A, Filograna Pignatelli M, Candela G, Docimo G. Evaluation of LMR, NLR and PLR as Predictors of Malignancy in Indeterminate Thyroid Nodules. *Acta Otorhinolaryngol Italica* (2021) 41(6):530–6. doi: 10.14639/0392-100x-n1515
 35. Yang H, Wang K, Li B, Li S, Li Y, Yuan L. The Prognostic Role of Blood Inflammatory Biomarkers and EGFR Mutation Status in Stage IIIA/N2 Non-Small Cell Lung Cancer Patients Treated With Trimodality Therapy. *Front Oncol* (2021) 11:707041. doi: 10.3389/fonc.2021.707041
 36. Zou ZM, An TZ, Li JX, Zhang ZS, Xiao YD, Liu J. Predicting Early Refractoriness of Transarterial Chemoembolization in Patients With Hepatocellular Carcinoma Using a Random Forest Algorithm: A Pilot Study. *J Cancer* (2021) 12(23):7079–87. doi: 10.7150/jca.63370
 37. Qi Q, Geng Y, Sun M, Wang P, Chen Z. Clinical Implications of Systemic Inflammatory Response Markers as Independent Prognostic Factors for Advanced Pancreatic Cancer. *Pancreatol* (2015) 15(2):145–50. doi: 10.1016/j.pan.2014.12.004
 38. Zhao H, Wei P, Feng Y. Association Between Frailty and Clinical Outcomes and Quality of Life in Older Adults Following Hip Fracture Surgery: A Retrospective Cohort Study. *Anesthesia Anal* (2022) 134(5):1035–42. doi: 10.1213/ane.0000000000005841
 39. Xiao Q, Li X, Duan B, Li X, Liu S, Xu B, et al. Clinical Significance of Controlling Nutritional Status Score (CONUT) in Evaluating Outcome of Postoperative Patients With Gastric Cancer. *Sci Rep* (2022) 12(1):93. doi: 10.1038/s41598-021-04128-4
 40. Noh HW, Jeon Y, Kim JH, Lee GY, Jeon SJ, Kim KY, et al. Higher Serum Total Cholesterol to High-Density Lipoprotein Cholesterol Ratio Is Associated With Increased Mortality Among Incident Peritoneal Dialysis Patients. *Nutrients* (2021) 14(1):144. doi: 10.3390/nu14010144
 41. Manjappachar NK, Cuenca JA, Ramirez CM, Hernandez M, Martin P, Reyes MP, et al. Outcomes and Predictors of 28-Day Mortality in Patients With Hematologic Malignancies and Septic Shock Defined by Sepsis-3 Criteria. *J Natl Compr Cancer Net JNCCN* (2022) 20(1):45–53. doi: 10.6004/jncn.2021.7046
 42. Felii J, Espinosa E, Basterretxea L, Paredero I, Llabrés E, Jiménez-Munárriz B, et al. Prediction of Chemotoxicity, Unplanned Hospitalizations and Early Death in Older Patients With Colorectal Cancer Treated With Chemotherapy. *Cancers* (2021) 14(1):127. doi: 10.3390/cancers14010127
 43. Micheletti L, Borella F, Preti M, Frau V, Cosma S, Privitera S, et al. Perineural Invasion in Vulvar Squamous-Cell Carcinoma Is an Independent Risk Factor for Cancer-Specific Survival, But Not for Locoregional Recurrence: Results From a Single Tertiary Referral Center. *Cancers* (2021) 14(1):124. doi: 10.3390/cancers14010124
 44. Orell-Kotikangas H, Österlund P, Mäkitie O, Saarialhti K, Ravasco P, Schwab U, et al. Cachexia at Diagnosis is Associated With Poor Survival in Head and Neck Cancer Patients. *Acta Oto-laryngologica* (2017) 137(7):778–85. doi: 10.1080/00016489.2016.1277263
 45. Sadeghi M, Keshavarz-Fathi M, Baracos V, Arends J, Mahmoudi M, Rezaei N. Cancer Cachexia: Diagnosis, Assessment, and Treatment. *Crit Rev Oncology/hematol* (2018) 127:91–104. doi: 10.1016/j.critrevonc.2018.05.006
 46. Fearon K, Strasser F, Anker SD, Bosaeus I, Bruera E, Fainsinger RL, et al. Definition and Classification of Cancer Cachexia: An International Consensus. *Lancet Oncol* (2011) 12(5):489–95. doi: 10.1016/s1470-2045(10)70218-7
 47. Xia WX, Ye YF, Lu X, Wang L, Ke LR, Zhang HB, et al. The Impact of Baseline Serum C-Reactive Protein and C-Reactive Protein Kinetics on the Prognosis of Metastatic Nasopharyngeal Carcinoma Patients Treated With Palliative Chemotherapy. *PLoS One* (2013) 8(10):e76958. doi: 10.1371/journal.pone.0076958
 48. Wong KCW, Hui EP, Lo KW, Lam WKJ, Johnson D, Li L, et al. Nasopharyngeal Carcinoma: An Evolving Paradigm. *Nat Rev Clin Oncol* (2021) 18(11):679–95. doi: 10.1038/s41571-021-00524-x

Conflict of Interest: The authors declare that the research was conducted in the absence of any commercial or financial relationships that could be construed as a potential conflict of interest.

Publisher's Note: All claims expressed in this article are solely those of the authors and do not necessarily represent those of their affiliated organizations, or those of the publisher, the editors and the reviewers. Any product that may be evaluated in this article, or claim that may be made by its manufacturer, is not guaranteed or endorsed by the publisher.

Copyright © 2022 Wei, Wang, Li, Wang, Liu, Huang, Wang, Tao and Xia. This is an open-access article distributed under the terms of the Creative Commons Attribution License (CC BY). The use, distribution or reproduction in other forums is permitted, provided the original author(s) and the copyright owner(s) are credited and that the original publication in this journal is cited, in accordance with accepted academic practice. No use, distribution or reproduction is permitted which does not comply with these terms.