



Prognostic Significance of Pretreatment Neutrophil-to-Lymphocyte Ratio, Platelet-to-Lymphocyte Ratio, or Monocyte-to-Lymphocyte Ratio in Endometrial Neoplasms: A Systematic Review and Meta-analysis

OPEN ACCESS

Edited by:

Alfredo Berruti,
University of Brescia, Italy

Reviewed by:

Albert Biete,
University of Barcelona, Spain
Georges Mjaess,
Free University of Brussels, Belgium

*Correspondence:

Lihui Zhang
lihui3572@sina.com

†ORCID:

Jiali Leng
orcid.org/0000-0002-3763-7908

Specialty section:

This article was submitted to
Genitourinary Oncology,
a section of the journal
Frontiers in Oncology

Received: 01 July 2021

Accepted: 31 March 2022

Published: 16 May 2022

Citation:

Leng J, Wu F and Zhang L (2022)
Prognostic Significance of
Pretreatment Neutrophil-to-
Lymphocyte Ratio, Platelet-to-
Lymphocyte Ratio, or Monocyte-
to-Lymphocyte Ratio in Endometrial
Neoplasms: A Systematic Review
and Meta-analysis.
Front. Oncol. 12:734948.
doi: 10.3389/fonc.2022.734948

Jiali Leng^{1†}, Fei Wu² and Lihui Zhang^{2*}

¹ Division of Obstetrics and Gynecology, The Second Hospital of Jilin University, Jilin University, Changchun, China,

² Division of Obstetrics and Gynecology, The Second Hospital of Jilin University, Changchun, China

Aim: Neutrophil-lymphocyte ratio (NLR), platelet-lymphocyte ratio (PLR), or monocyte-lymphocyte ratio (MLR) has been shown to be related to the poor prognosis of cervical cancer, ovarian cancer, breast cancer, and other malignant tumors, but their role in predicting the prognosis of endometrial cancer is still controversial. Therefore, we conducted this meta-analysis to evaluate the effectiveness of NLR more accurately, PLR, or MLR in predicting the prognosis of endometrial cancer (EC).

Methods: This review systematically searched for relevant publications in databases of the Cochrane Library, PubMed, EMBASE, CNKI, WanFang, VIP, and CBM. Pooled hazard ratios (HR) with 95% confidence intervals (95% CI) were determined and used to explore the association between inflammatory biomarkers (NLR, PLR, and MLR) and overall survival (OS), progression-free survival (PFS), and disease-free survival (DFS) in a random-effects model. We also conducted subgroup analysis and publication bias in this meta-analysis. Stata 12.0 was used for statistical analysis.

Results: This meta-analysis contained 14 eligible studies including 5,274 patients. Our results showed that NLR or PLR was associated with OS [NLR: HR, 2.51; 95% CI, 1.70–3.71; $p < 0.001$ in univariate analysis (Ua); HR, 1.87; 95% CI, 1.34–2.60; $p < 0.001$ in multivariate analysis (Ma); PLR: HR, 2.50; 95% CI, 1.82–3.43; $p < 0.001$ in Ua; HR, 1.86; 95% CI, 1.22–2.83; $p = 0.004$ in Ma], but MLR was not associated with OS (HR, 1.44; 95% CI, 0.70–2.95; $p = 0.325$ in Ua; HR, 1.01; 95% CI, 0.39–2.60; $p = 0.987$ in Ma). A further subgroup analysis found that the correlations were not affected by race, cutoff value, sample size, or treatment. Our meta-analysis showed that NLR or PLR was associated with DFS (NLR: HR, 2.50; 95% CI, 1.38–4.56; $p = 0.003$ in Ua; HR, 2.06;

95% CI, 1.26–3.37, $P=0.004$ in Ma; PLR: HR, 1.91; 95% CI, 1.30–2.81; $p=0.001$ in Ua), and NLR was associated with PFS only in the univariate analysis (HR, 1.71; 95% CI, 1.04–2.81; $p=0.035$ in Ua; HR, 1.79; 95% CI, 0.65–4.89; $P=0.257$ in Ma), but MLR was not associated with DFS (HR, 0.36; 95% CI, 0.03–4.13; $p=0.409$ in Ua).

Conclusions: Our results indicated that pretreatment NLR and PLR were biomarkers of poor prognosis in patients with endometrial cancer. The results indicated that NLR or PLR was associated with OS and disease-free survival DFS, and NLR was associated with PFS only in univariate analysis, but MLR was not associated with OS or DFS.

Keywords: endometrial cancer, neutrophil-to-lymphocyte ratio, monocyte-to-lymphocyte ratio, prognosis, platelet-to-lymphocyte ratio

INTRODUCTION

Endometrial cancer (EC) is one of the most common malignant tumors in women, mostly in postmenopausal women. Each year, more than 140,000 women worldwide suffer from endometrial cancer, and it is estimated that more than 40,000 women die from this cancer (1). In recent years, the incidence of endometrial cancer has remained high and has a trend in the younger generation (2, 3). At present, the first choice of treatment is surgery, supplemented by radiotherapy and/or chemotherapy. However, a systematic review reported an overall recurrence risk of 13% for all endometrial cancer patients and 3% for patients at low risk (4). Therefore, we urgently need effective biomarkers for an individualized prediction of the treatment outcome and prognosis of endometrial cancer.

In recent years, many studies have confirmed that the occurrence and development of malignant tumors are closely related to inflammation, and the level of inflammation indicators can affect the prognosis of patients with malignant tumors. Among the common inflammatory indicators: neutrophil-lymphocyte ratio (NLR) has played a good predictive role in the prognosis of patients with colorectal cancer, gastric cancer, liver cancer, pancreatic cancer, ovarian cancer, breast cancer and urological tumors (5–7). Pretreatment thrombocytosis is related to the decreased survival rate of lung cancer, kidney cancer, ovarian cancer, vulvar cancer, and cervical cancer. Some studies have also reported that the platelet-to-lymphocyte ratio (PLR) and the monocyte-to-lymphocyte ratio (MLR) have been shown to be associated with the poor prognosis of a series of malignant tumors (8–14). However, they are still controversial for predicting the prognosis of endometrial cancer patients. Jianpei Li (15) concluded that C-reactive protein (CRP) was identified as the independent prognostic factor, but not NLR or PLR or MLR. Furthermore, Rong Cong et al. (16) indicated that the pretreatment NLR, PLR, and MLR were independent prognostic markers for OS in EC patients, and the combination of NLR, PLR, and MLR provided better prognostic value than any single ratio. As more studies are published, the prognostic values of NLR, PLR, or MLR in EC are still unclear. Therefore, the purpose of this study is to explore the influence of preoperative NLR, PLR, and MLR on predicting the prognosis of endometrial cancer patients.

MATERIALS AND METHODS

Search Strategy

A systematic review was performed in accordance with the Preferred Reporting Items for Systematic Reviews and Meta-analyses guideline (registered name: Jiali Leng; ID number: CRD42021227644). We conducted a systematic literature search for potentially eligible studies. We searched PubMed, EMBASE, the Cochrane Library, CNKI, WanFang, VIP, and CBM databases systematically using the following key terms: (“platelet lymphocyte ratio” OR “PLR” OR “neutrophil lymphocyte ratio” OR “NLR” OR “monocyte lymphocyte ratio” OR “MLR”) AND (“endometrial neoplasms” OR “endometrial cancer”) (see Appendix for details). The search was updated in October 2020 without language or date restrictions.

Selection Criteria

Eligible studies must fulfill all of the following criteria (1): patients with endometrial cancer diagnosed by histopathology (2), provide pretreatment cutoff values of NLR or PLR or MLR (3), provided a hazard ratio (HR) with the corresponding 95% confidence interval (CI) (4), the measured outcome indicators include overall survival (OS) or progression-free survival (PFS) or disease-free survival (DFS), and (5) the included studies were cohort studies. The exclusion criteria were as follows (1): insufficient data for estimating HR and 95% CI values and (2) full text is not unavailable. All evaluations were independently conducted by two reviewers to ensure the comprehensiveness and accuracy of the included studies.

Data Extraction

Two investigators independently collected information from each included eligible study. The data were extracted as follows: name of the first author, country of study, year of publication, sample size, age, follow-up time, tumor FIGO staging, histological type, tumor grade, treatment method, interval between blood count measurement and surgical treatment, cutoff value of each inflammation indicators (NLR, PLR, and MLR), and the corresponding HR and 95% CI values of OS, PFS, or DFS. Two reviewers independently evaluated each study and reached a consensus after a discussion.

Quality Assessment

Two independent investigators use the Newcastle Ottawa Quality Assessment Scale (NOS) (17) to evaluate the quality of the eligible studies. An article with a NOS score of 6 or more stars was considered as a high-quality article.

Statistical Analysis

HR and 95% CI were used to assess the association between NLR/PLR/MLR and OS, DFS, and PFS. Cochran's Q test and Higgins I^2 statistic were used to test the heterogeneity of the combined data. Random-effects model was adopted in all of our studies. We further conducted subgroup analyses by race (Asian or non-Asian), sample (<300 or \geq 300), treatment (surgery or surgery + chemistry or surgery + radiation or surgery + chemistry + radiation), NLR cutoff value (<2.20 or \geq 2.20), PLR cutoff value (<175 or \geq 175), and MLR cutoff value (<0.20 or \geq 0.20). Egger's test was used to assess the publication bias, and $P < 0.05$ was considered statistically significant. All statistical analyses were performed using STATA 12.0 software.

RESULTS

Search Results and Eligible Study Characteristics

A total of 716 articles from the primary literature were searched in the databases of Cochrane Library, PubMed, EMBASE, CNKI, WanFang, VIP, and CBM. A flow chart for the selection of eligible studies is presented in **Figure 1**. First of all, 208 duplicate records were found and removed. Then, 482 studies were excluded after the initial evaluation of titles and abstracts. Among the remaining 26 articles, 12 were further excluded because they were letters, meeting abstracts, or had insufficient

data. Finally, 14 available studies were included in this meta-analysis (15, 16, 18–29).

The characteristics of the 14 studies are summarized in **Table 1**. Of the 14 publications, 11 assessed the relationship between NLR and OS in univariate analysis (Ua) and 10 in multivariate analysis (Ma), 4 studies evaluated the association between NLR and DFS in Ua and 2 studies in Ma, 2 assessed the relationship between NLR and PFS in Ua and 2 in multivariate analysis, 8 studies evaluated the association between PLR and OS in Ua and 6 studies in Ma, four evaluated between PLR and DFS in Ua, 5 studies evaluated the association between MLR and OS in Ua and 4 studies in Ma, and two evaluated between MLR and DFS in Ua. A total of 5,274 patients were enrolled, with sample numbers ranging from 32 to 1,111. The study quality assessment, as per the Newcastle–Ottawa Quality Assessment Scale, yielded scores ranging from 6 to 8, with a mean score of 7.1.

Association of Pre-Treatment NLR With Overall Survival

The association between NLR and OS was assessed in 11 studies in univariate analysis consisting of 4,235 patients and 10 studies in multivariate analysis consisting of 3,817 patients. Our results showed that NLR was associated with OS (HR, 2.51; 95% CI, 1.70–3.71; $p < 0.001$ in Ua; HR, 1.87; 95% CI, 1.34–2.60, $p < 0.001$ in Ma) (**Figure 2A, B**). We also performed a subgroup analysis by race, cutoff value, sample size, and treatment (**Table 2**). A further subgroup analysis found that this correlation was not affected by race (Asian: HR, 3.09; 95% CI, 1.96–4.87; $p < 0.001$ in Ua; HR, 2.11; 95% CI, 1.54–2.91, $p < 0.001$ in Ma) or NLR cutoff value (<2.20: HR, 2.62; 95% CI, 1.38–4.99; $p = 0.003$ in Ua; HR, 2.31; 95% CI, 1.44–3.70; $p < 0.001$ in Ma; \geq 2.20: HR, 2.50; 95% CI, 1.36–4.58; $p = 0.003$ in Ua; HR, 1.60; 95% CI, 1.09–2.36; $p = 0.016$ in Ma) or sample size (<300: HR, 2.73; 95% CI, 1.59–4.68; $p < 0.001$ in Ua; HR, 1.77; 95% CI, 1.40–2.23, $p < 0.001$ in Ma; \geq 300: HR, 2.34; 95% CI, 1.14–4.82,

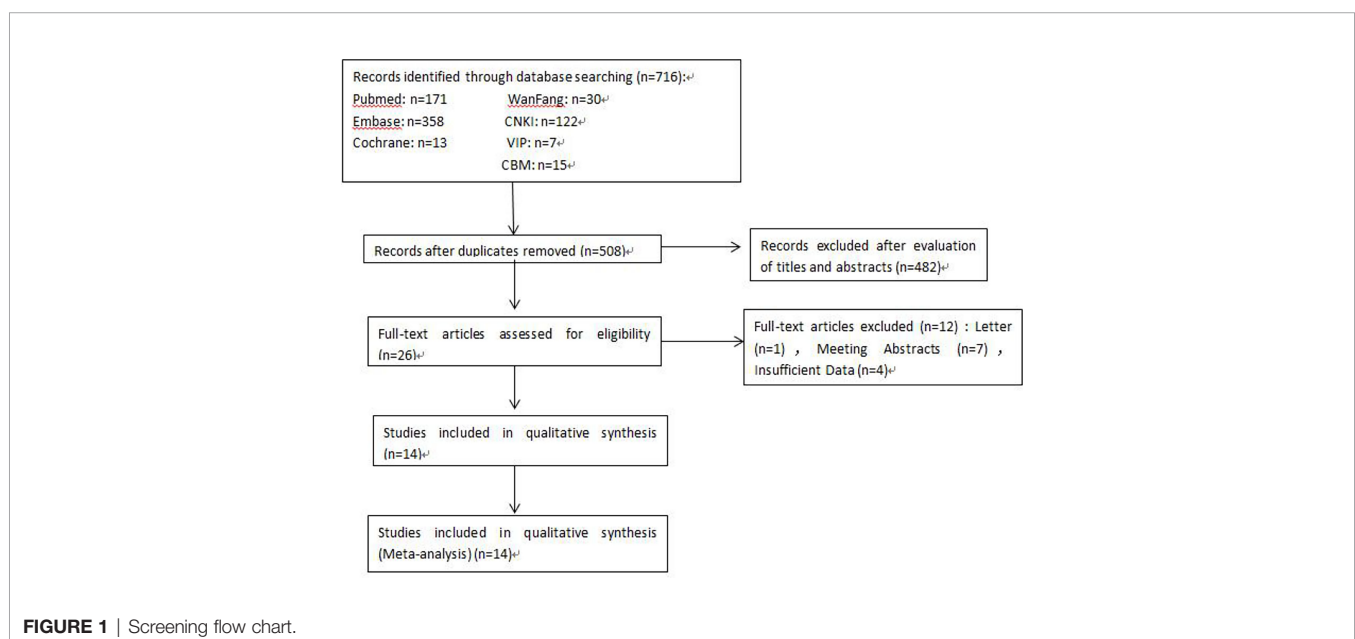


TABLE 1 | Characteristics of the included studies.

Study	Country	Sample size	Age (year)	Follow-up (months)	Tumor stage	Histological type	Tumor grade	Treatment	Interment	Inflammatory indicators	Outcome indicators	NOS scores
Tadashi Aoyama 2019	Japan	197	Median, 59	Unclear	I – IV	Endometrioid, other	1–3	S	Unclear	NLR, PLR	OS, PFS	7
Günsu Kimyon Cömert, 2018	Turkey	497	Median, 58	Median, 24	I – IV	Endometrioid, clear cell, serous, mucinous, mixed, undifferentiated, not reported	1–3	S, C, R	8 ± 6 days	NLR, PLR, MLR	OS, DFS	7
Rong Cong, 2020	China	1,111	Median, 56	Median, 40	I – IV	Endometrioid, stromal sarcoma, clear cell, serous, carcinosarcoma, mixed	1–3	S	Within 2 weeks	NLR, PLR, MLR	OS	7
M Cummings, (20)	UK	605	Median, 65	Median, 81.5	I – IV	Endometrioid, clear cell, serous, carcinosarcoma, mixed	1–3	S, C, R	Within 2 weeks	NLR, PLR, MLR	OS	8
Ling Ding, 2017	China	185	Mean, 59.29	Mean, 65.84 ± 24.73	I – IV	Type I, type II	1–3	S, C, R	Within 1 week	NLR, PLR	OS, DFS	8
Wan Kyu Eo, 2016	Korea	255	Median, 44	Median, 51.3	I – IV	Endometrioid, clear cell, serous, mixed, undifferentiated, mucinous, squamous	1–3	S	Within 2 weeks	NLR, PLR, MLR	OS, DFS	6
Tomoko Haruma, 2015	Japan	320	Median, 57.5	1–130	I – IV	Endometrioid, clear cell, serous, mixed, undifferentiated, squamous, carcinosarcoma	1–3	S, C	Within 1 month	NLR, PLR	OS, DFS	8
Kaori Kiuchi, 2018	Japan	32	Median, 59.5	Unclear	Clinical stage IV B	Endometrioid, serous, clear cell	1–3	S, C, R	Unclear	NLR, PLR	OS	7
Jianpei Li, 2015	China	282	Median, 53	75	I – IV	Type I, type II	1–3	S, C	within 2 weeks	NLR, PLR	OS	7
Isa Temur, 2018	Turkey	763	Median, 58	60	I – IV	Type I, type II	1–3	S, C, R	Unclear	NLR	OS	7
Miaolong He, 2013	China	212	Median, 54	Median, 57.5	I – IV	Endometrioid	1–3	S, C, R	Within 2 weeks	NLR	OS	7
Katarzyna Holub, 2020	France	155	Median, 63.1	Median, 46.5	I – III	Endometrioid, others	1–3	S, C, R	Within 3 months	NLR, MLR	OS, PFS	7
Ryoko Takahashi, 2015	Japan	508	Mean, 58	60	I – IV	Endometrioid, others	1–3	S, C, R	Before surgery	NLR	OS	6
Jing Wang, 2016	China	152	Mean, 58	Unclear	I – IV	Type I, type II	1–3	S (+ R)	Before surgery	NLR	OS, PFS	7

$p = 0.021$ in Ua; HR, 1.87; 95% CI, 1.06–3.29; $p = 0.030$ in Ma) or treatment (surgery: HR, 3.76; 95% CI, 2.67–5.30; $p < 0.001$ in Ua; HR, 2.71; 95% CI, 1.83–4.02; $p < 0.001$ in Ma; surgery + chemistry: HR, 4.09; 95% CI, 1.95–8.59; $p < 0.001$ in Ua; HR, 2.83; 95% CI, 1.28–6.30, $p = 0.011$ in Ma; surgery + chemistry + radiation: HR, 2.03; 95% CI, 1.39–2.96, $p < 0.001$ in Ua; HR, 1.66; 95% CI, 1.15–2.40, $p = 0.006$ in Ma).

Association of Pre-treatment NLR With DFS

The association between NLR and DFS was assessed in 4 studies in a univariate analysis consisting of 1,257 patients and 2 studies in a multivariate analysis consisting of 505 patients. Our meta-analysis showed that NLR was associated with DFS (HR, 2.50; 95% CI, 1.38–4.56, $P = 0.003$ in Ua; HR, 2.06; 95% CI, 1.26–3.37; $P = 0.004$ in Ma) (Figure 3A, B). A further subgroup analysis

(Table 3) found that this correlation was not affected by race (Asian: HR, 3.19; 95% CI, 2.16–4.73, $p < 0.001$ in Ua; HR, 2.06; 95% CI, 1.26–3.37, $p = 0.004$ in Ma) or NLR cutoff value (< 2.20 : HR, 2.71; 95% CI, 1.26–5.82; $p = 0.011$ in Ma; ≥ 2.20 : HR, 2.70; 95% CI, 1.68–4.34; $p < 0.001$ in Ua) or sample size (< 300 : HR, 4.11; 95% CI, 2.43–6.94, $p < 0.001$ in Ua; HR, 2.71; 95% CI, 1.26–5.82; $p = 0.011$ in Ma) or treatment (surgery: HR, 3.68; 95% CI, 1.55–8.75; $p = 0.003$ in Ua; surgery + chemistry: HR, 2.37; 95% CI, 1.34–4.17; $p = 0.003$ in Ua; surgery + chemistry + radiation: HR, 2.71; 95% CI, 1.26–5.82; $p = 0.011$ in Ma).

Association of Pre-treatment NLR With PFS

The association between NLR and PFS was assessed in 2 studies in a univariate analysis consisting of 352 patients and 2 studies in

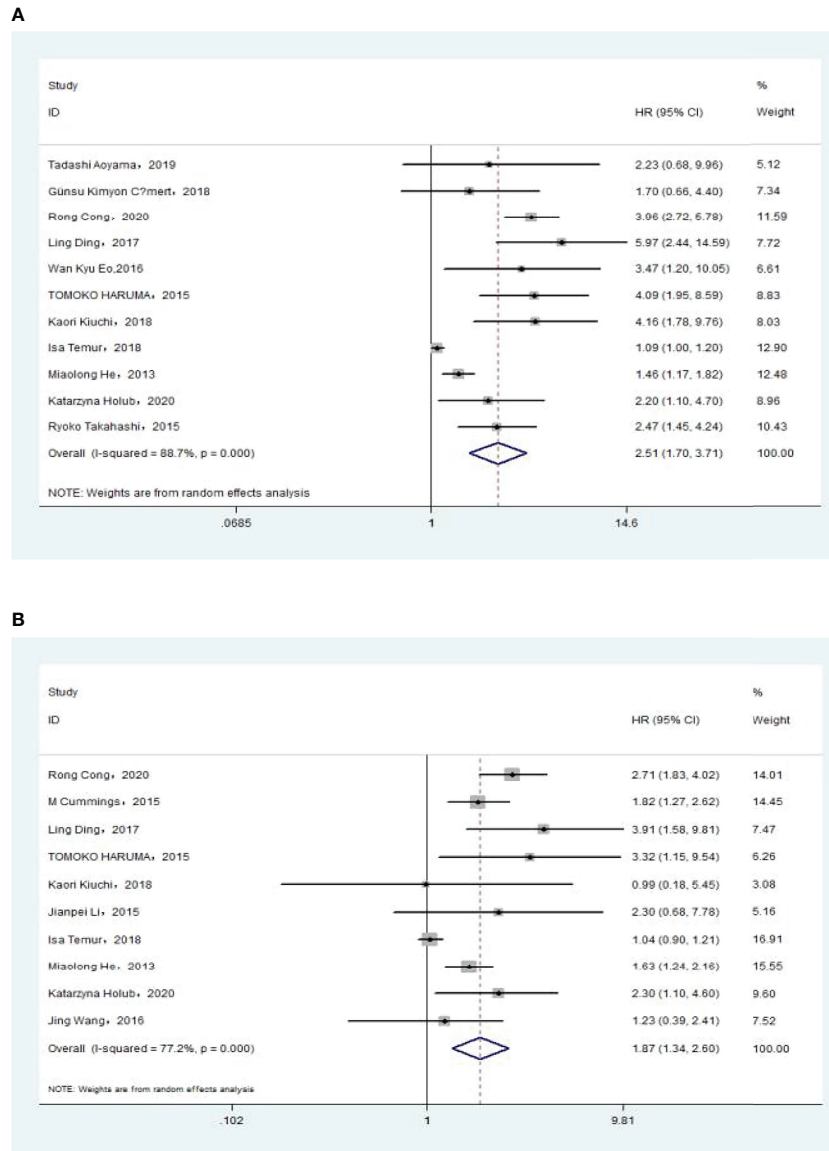


FIGURE 2 | (A)Relationship between *neutrophil-lymphocyte ratio* (NLR) and overall survival in univariate analysis. **(B)** Relationship between NLR and overall survival in multivariate analysis.

TABLE 2 | The results of the subgroup analysis for **neutrophil-lymphocyte ratio** (NLR) and overall survival are summarized below.

	HR	Lci	Ua Hci	P	HR	Lci	Ma Hci	P
NLR < 2.20	2.62	1.38	4.99	<i>P</i> = 0.003	2.31	1.44	3.70	<i>P</i> < 0.001
NLR ≥ 2.2	2.50	1.36	4.58	<i>P</i> = 0.003	1.60	1.09	2.36	<i>P</i> = 0.016
Asian	3.09	1.96	4.87	<i>P</i> < 0.001	2.11	1.54	2.91	<i>P</i> < 0.001
Non-Asian	1.41	0.87	2.27	<i>P</i> = 0.164	1.52	0.92	2.51	<i>P</i> = 0.101
Sample < 300	2.73	1.59	4.68	<i>P</i> < 0.001	1.77	1.40	2.23	<i>P</i> < 0.001
Sample ≥ 300	2.34	1.14	4.82	<i>P</i> = 0.021	1.87	1.06	3.29	<i>P</i> = 0.03
Surgery (S)	3.76	2.67	5.30	<i>P</i> < 0.001	2.71	1.83	4.02	<i>P</i> < 0.001
Surgery + chemistry (S+C)	4.09	1.95	8.59	<i>P</i> < 0.001	2.83	1.28	6.30	<i>P</i> = 0.011
Surgery + radiation (S+R)	–	–	–	–	1.23	0.49	3.04	<i>P</i> = 0.66
Surgery + chemistry + radiation (S+C+R)	2.03	1.39	2.96	<i>P</i> < 0.001	1.66	1.15	2.40	<i>P</i> = 0.006
Total	2.51	1.70	3.71	<i>P</i> < 0.001	1.87	1.34	2.60	<i>P</i> < 0.001

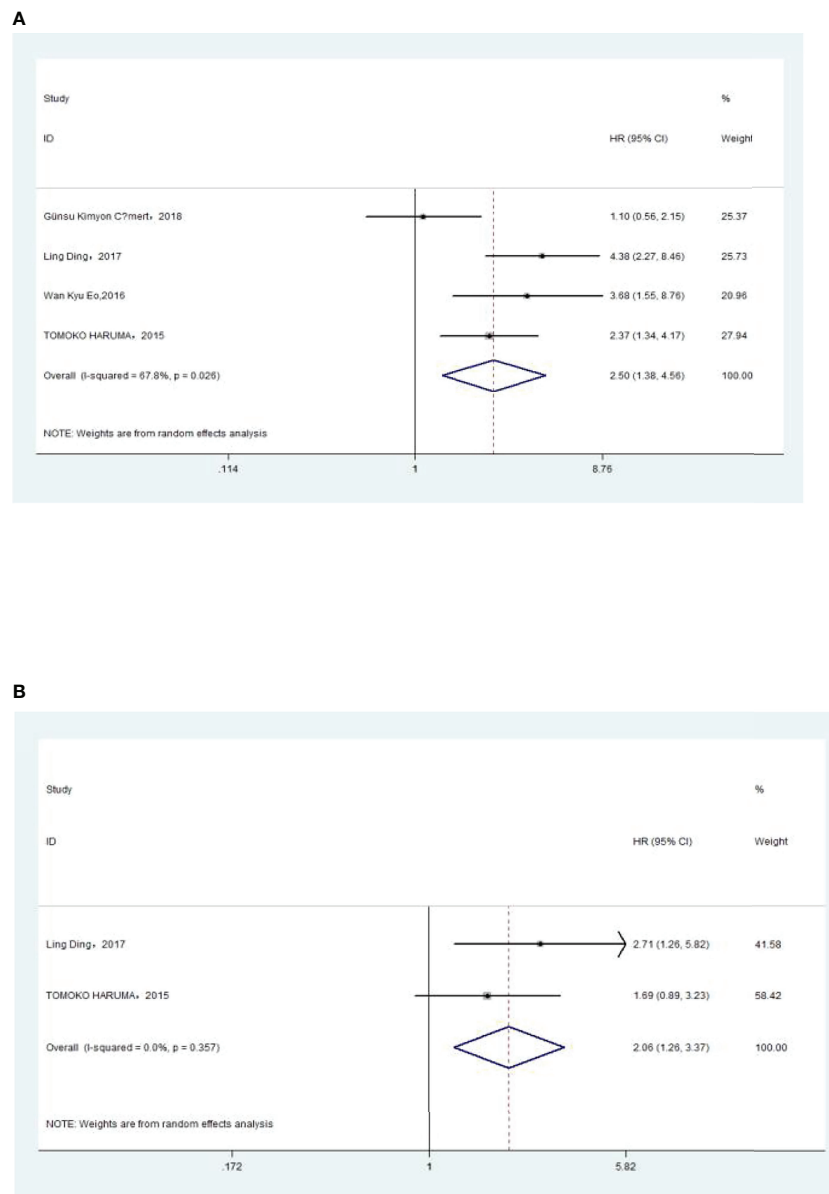


FIGURE 3 | (A) Relationship between neutrophil-lymphocyte ratio (NLR) and disease-free survival (DFS) in univariate analysis. **(B)** Relationship between NLR and DFS in multivariate analysis.

a multivariate analysis consisting of 349 patients. Our meta-analysis showed that NLR was associated with PFS only in the univariate analysis (HR, 1.71; 95% CI, 1.04–2.81; $P = 0.035$ in Ua; HR, 1.79; 95% CI, 0.65–4.89; $p = 0.257$ in Ma) (**Figure 4A, B**). A further subgroup analysis (**Table 4**) found that this correlation was not affected by race (Asian: HR, 2.36; 95% CI, 1.11–5.03, $p = 0.026$ in Ua) or NLR cutoff value (<2.20 : HR, 2.36; 95% CI, 1.11–5.03; $p = 0.026$ in Ua; ≥ 2.20 : HR, 2.79; 95% CI, 1.72–4.53; $p < 0.001$ in Ma) or treatment (surgery: HR, 2.36; 95% CI, 1.11–5.03, $p = 0.026$ in Ua; surgery + radiation: HR, 2.79; 95% CI, 1.72–4.53; $p < 0.001$ in Ma).

Association of Pre-Treatment PLR With Overall Survival

The association between PLR and OS was assessed in 8 studies in a univariate analysis consisting of 3,202 patients and 6 studies in a multivariate analysis consisting of 3,012 patients. Our results showed that PLR was associated with OS (HR, 2.50; 95% CI, 1.82–3.43; $p < 0.001$ in Ua; HR, 1.86; 95% CI, 1.22–2.83; $p = 0.004$ in Ma) (**Figure 5A, B**). A further subgroup analysis (**Table 5**) found that this correlation was not affected by race (Asian: HR, 2.32; 95% CI, 1.44–3.75, $p = 0.001$ in Ua; non-Asian: HR, 2.78; 95% CI, 2.01–3.84; $p < 0.001$ in Ua; HR, 2.01; 95% CI, 1.42–2.84,

TABLE 3 | The results of the subgroup analysis for neutrophil–lymphocyte ratio (NLR) and disease-free survival are summarized below.

	HR	Lci	Ua Hci	P	HR	Lci	Ma Hci	P
NLR < 2.20	2.20	0.57	8.52	<i>P</i> = 0.254	2.71	1.26	5.82	<i>P</i> = 0.011
NLR ≥ 2.2	2.70	1.68	4.34	<i>P</i> < 0.001	1.69	0.89	3.23	<i>P</i> = 0.110
Asian	3.19	2.16	4.73	<i>P</i> < 0.001	2.06	1.26	3.37	<i>P</i> = 0.004
Non-Asian	1.10	0.56	2.16	<i>P</i> = 0.781	–	–	–	–
Sample < 300	4.11	2.43	6.94	<i>P</i> < 0.001	2.71	1.26	5.82	<i>P</i> = 0.011
Sample ≥ 300	1.65	0.78	3.49	<i>P</i> = 0.191	1.69	0.89	3.23	<i>P</i> = 0.110
S	3.68	1.55	8.75	<i>P</i> = 0.003	–	–	–	–
S+C	2.37	1.34	4.17	<i>P</i> = 0.003	1.69	0.89	3.23	<i>P</i> = 0.110
S+R	–	–	–	–	–	–	–	–
S+C+R	2.20	0.57	8.52	<i>P</i> = 0.254	2.71	1.26	5.82	<i>P</i> = 0.011
Total	2.50	1.38	4.56	<i>P</i> = 0.003	2.06	1.26	3.37	<i>P</i> = 0.004

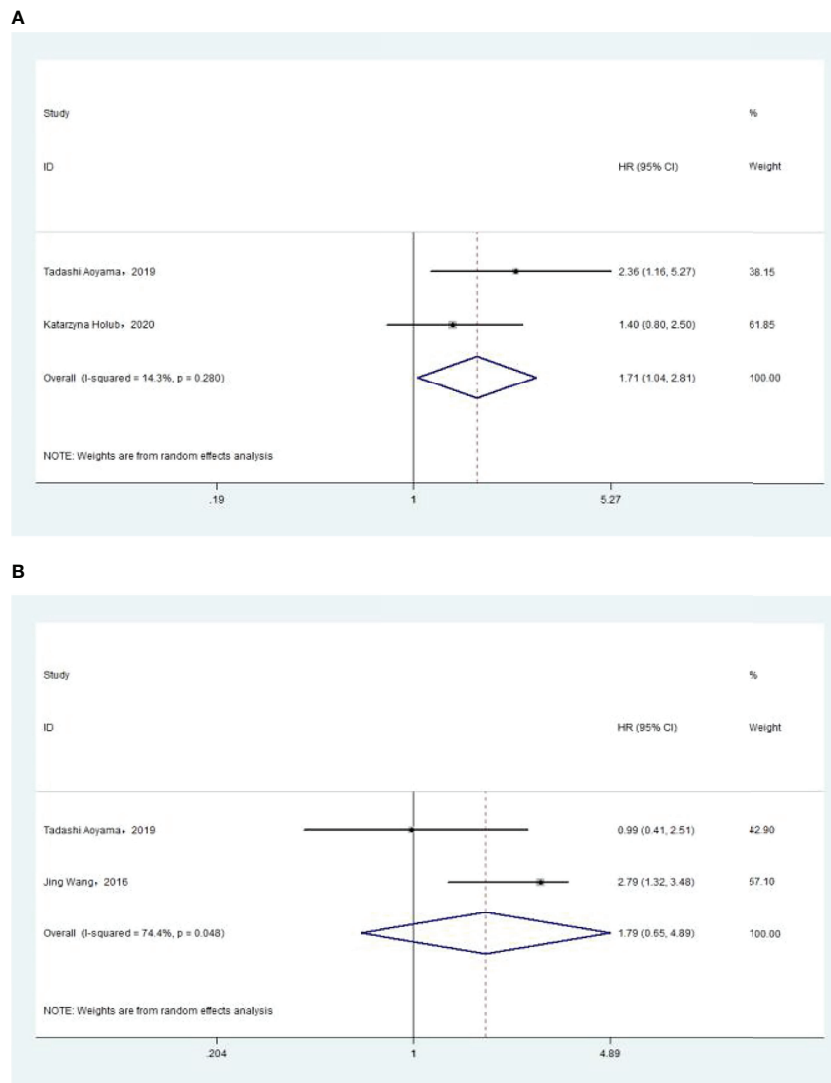


FIGURE 4 | **(A)** Relationship between neutrophil–lymphocyte ratio (NLR) and progression-free survival (PFS) in univariate analysis. **(B)** Relationship between NLR and PFS in multivariate analysis.

TABLE 4 | The results of the subgroup analysis for neutrophil–lymphocyte ratio (NLR) and progression-free survival are summarized below.

	HR	Lci	Ua Hci	P	HR	Lci	Ma Hci	P
NLR < 2.20	2.36	1.11	5.03	<i>P</i> = 0.026	0.99	0.40	2.45	<i>P</i> = 0.983
NLR ≥ 2.2	1.40	0.79	2.47	<i>P</i> = 0.247	2.79	1.72	4.53	<i>P</i> < 0.001
Asian	2.36	1.11	5.03	<i>P</i> = 0.026	1.79	0.65	4.89	<i>P</i> = 0.257
Non-Asian	1.40	0.79	2.47	<i>P</i> = 0.247	–	–	–	–
Sample < 300	–	–	–	–	–	–	–	–
Sample ≥ 300	–	–	–	–	–	–	–	–
S	2.36	1.11	5.03	<i>P</i> =0.026	0.99	0.40	2.45	<i>P</i> = 0.983
S+C	–	–	–	–	–	–	–	–
S+R	–	–	–	–	2.79	1.72	4.53	<i>P</i> < 0.001
S+C+R	1.40	0.79	2.47	<i>P</i> =0.247	–	–	–	–
Total	1.71	1.04	2.81	<i>P</i> =0.035	1.79	0.65	4.89	<i>P</i> = 0.257

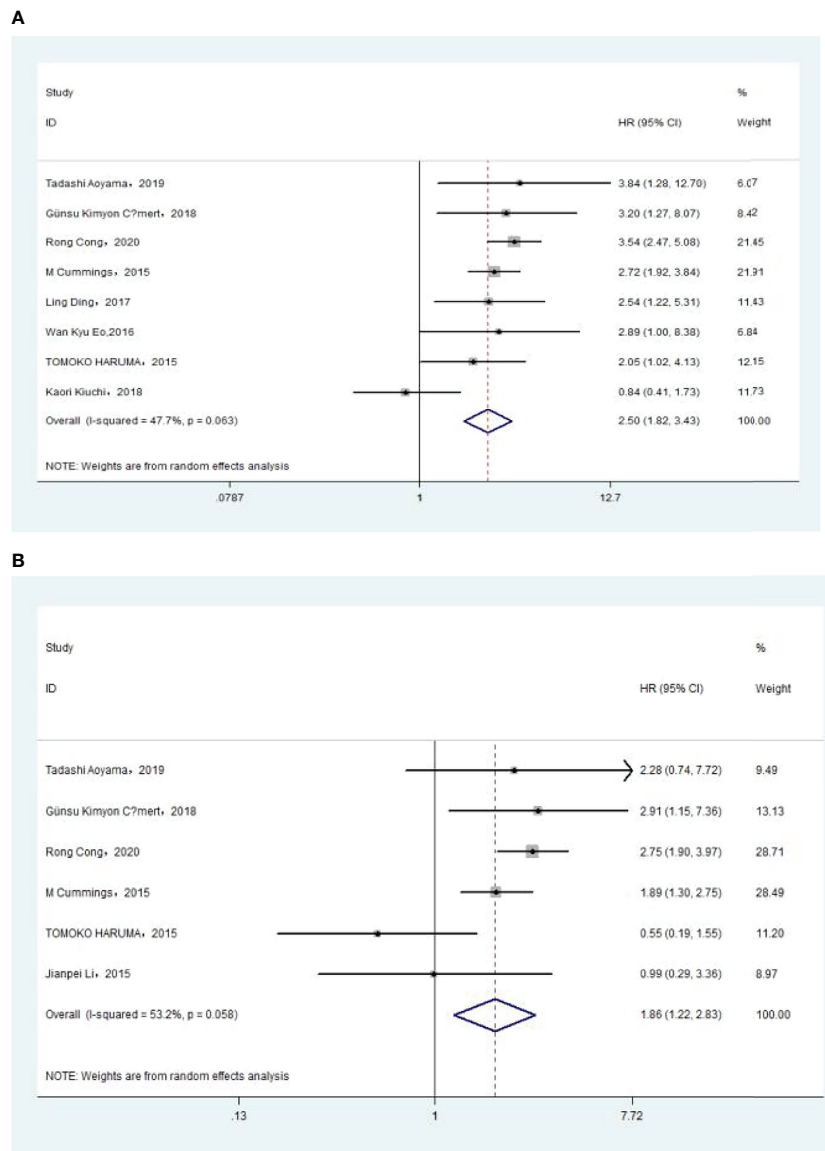


FIGURE 5 | (A) Relationship between platelet–lymphocyte ratio (PLR) and overall survival (OS) in univariate analysis. **(B)** Relationship between PLR and OS in multivariate analysis.

TABLE 5 | The results of the subgroup analysis for platelet–lymphocyte ratio and overall survival are summarized below.

	Ua				Ma			
	HR	Lci	Hci	P	HR	Lci	Hci	P
PLR < 175	3.06	2.32	4.05	$P < 0.001$	1.78	0.72	4.41	$P = 0.214$
PLR \geq 175	2.14	1.10	4.15	$P = 0.025$	1.83	1.30	2.57	$P = 0.001$
Asian	2.32	1.44	3.75	$P = 0.001$	1.47	0.65	3.33	$P = 0.353$
Non-Asian	2.78	2.01	3.84	$P < 0.001$	2.01	1.42	2.84	$P < 0.001$
Sample < 300	2.05	1.01	4.16	$P = 0.047$	1.53	0.66	3.56	$P = 0.325$
Sample \geq 300	2.96	2.36	3.72	$P < 0.001$	1.92	1.16	3.18	$P = 0.011$
S	3.50	2.52	4.85	$P < 0.001$	2.70	1.90	3.84	$P < 0.001$
S+C	2.05	1.02	4.13	$P = 0.044$	0.70	0.32	1.56	$P = 0.385$
S+R	–	–	–	–	–	–	–	–
S+C+R	2.09	1.19	3.66	$P = 0.01$	2.01	1.42	2.84	$P = 0.001$
Total	2.50	1.82	3.43	$P < 0.001$	1.86	1.22	2.83	$P = 0.004$

$p < 0.001$ in Ma) or PLR cutoff value (<175: HR, 3.06; 95% CI, 2.32–4.05; $p < 0.001$ in Ua; ≥ 175 : HR, 2.14; 95% CI, 1.10–4.15; $p = 0.025$ in Ua; HR, 1.83; 95% CI, 1.30–2.57; $p = 0.001$ in Ma) or sample size (<300: HR, 2.05; 95% CI, 1.01–4.16; $p = 0.047$ in Ua; ≥ 300 : HR, 2.96; 95% CI, 2.36–3.72; $p < 0.001$ in Ua; HR, 1.92; 95% CI, 1.16–3.18; $p = 0.011$ in Ma) or treatment (surgery: HR, 3.50; 95% CI, 2.52–4.85; $p < 0.001$ in Ua; HR, 2.70; 95% CI, 1.90–3.84; $p < 0.001$ in Ma; surgery + chemotherapy: HR, 2.05; 95% CI, 1.02–4.13; $p = 0.044$ in Ua; surgery + chemotherapy + radiation: HR, 2.09; 95% CI, 1.19–3.66; $p = 0.010$ in Ua; HR, 2.01; 95% CI, 1.42–2.84; $p < 0.001$ in Ma).

Association of Pre-Treatment PLR With DFS

The association between PLR and DFS was assessed in 4 studies in a univariate analysis consisting of 1,257 patients. Our meta-analysis showed that PLR was associated with DFS (HR, 1.91; 95% CI, 1.30–2.81; $p = 0.001$ in Ua) (Figure 6). A further subgroup analysis (Table 6) found that this correlation was not affected by race (Asian: HR, 2.13; 95% CI, 1.47–3.08; $p < 0.001$ in Ua) or PLR cutoff value (≥ 175 : HR, 2.03; 95% CI, 1.09–3.77; $p = 0.025$ in Ua) or sample size

(<300: HR, 2.67; 95% CI, 1.64–4.37; $p < 0.001$ in Ua) or treatment (surgery: HR, 3.08; 95% CI, 1.30–7.31; $p = 0.011$ in Ua).

Association of Pre-Treatment MLR With Overall Survival

The association between MLR and OS was assessed in 5 studies in a univariate analysis consisting of 2,623 patients and 4 studies in a multivariate analysis consisting of 2,126 patients. Our results showed that MLR was not associated with OS (HR, 1.44; 95% CI, 0.70–2.95; $p = 0.325$ in Ua; HR, 1.01; 95% CI, 0.39–2.60; $p = 0.987$ in Ma) (Figure 7A, B). A further subgroup analysis (Table 7) found that this correlation was not affected by race (Asian: HR, 0.23; 95% CI, 0.00–22.06; $p = 0.528$ in Ua; HR, 0.37; 95% CI, 0.02–8.45; $p = 0.532$ in Ma; non-Asian: HR, 2.30; 95% CI, 0.51–10.36; $p = 0.278$ in Ma) or MLR cutoff value (<0.20: HR, 2.30; 95% CI, 0.51–10.36; $p = 0.278$ in Ma; ≥ 0.20 : HR, 0.23; 95% CI, 0.00–22.06; $p = 0.528$ in Ua; HR, 0.37; 95% CI, 0.02–8.45; $p = 0.532$ in Ma) or sample size (<300: HR, 0.33; 95% CI, 0.00–73.9; $p = 0.688$ in Ua; HR, 0.63; 95% CI, 0.01–48.82; $p = 0.837$ in Ma) or treatment (surgery: HR, 0.23; 95% CI, 0.00–22.06; $p = 0.528$ in Ua; HR, 0.37; 95% CI, 0.02–8.45; $p = 0.532$ in Ma; surgery + chemotherapy + radiation: HR, 2.30; 95% CI, 0.51–10.36; $p = 0.278$ in Ma).

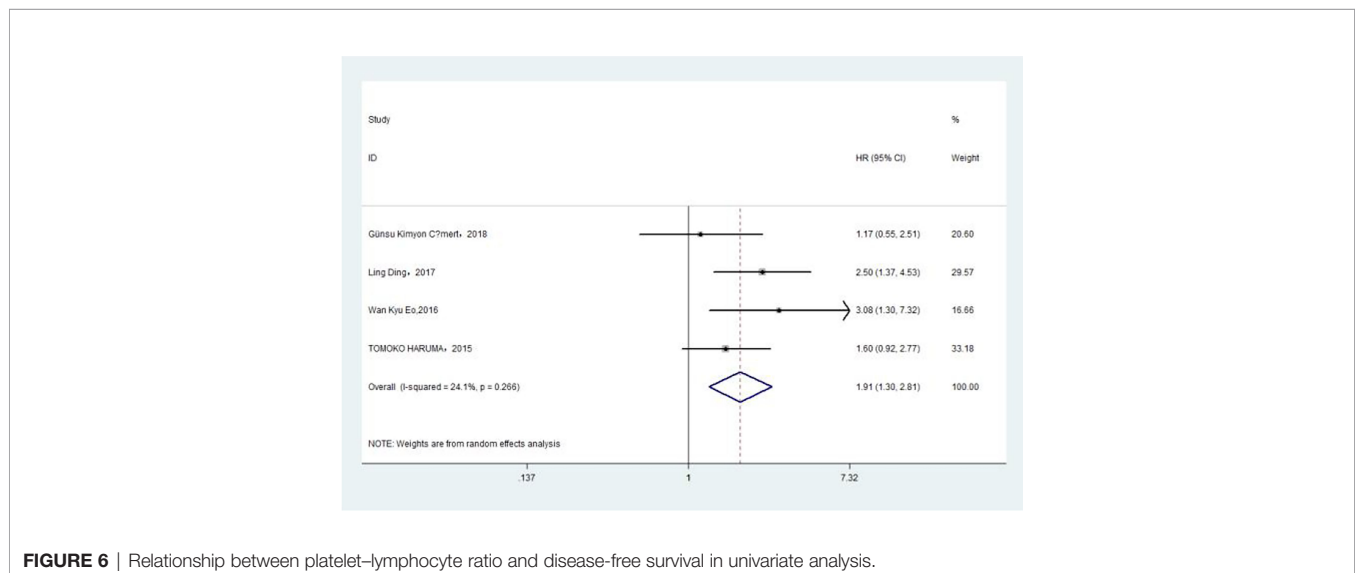
**FIGURE 6** | Relationship between platelet–lymphocyte ratio and disease-free survival in univariate analysis.

TABLE 6 | The results of the subgroup analysis for platelet–lymphocyte ratio (PLR) and disease-free survival are summarized below.

	HR	Lci	Ua Hci	P
PLR < 175	1.78	0.85	3.72	<i>P</i> = 0.129
PLR ≥ 175	2.03	1.09	3.77	<i>P</i> = 0.025
Asian	2.13	1.47	3.08	<i>P</i> < 0.001
Non-Asian	1.17	0.55	2.50	<i>P</i> = 0.685
Sample < 300	2.67	1.64	4.37	<i>P</i> < 0.001
Sample ≥ 300	1.44	0.92	2.24	<i>P</i> = 0.112
S	3.08	1.30	7.31	<i>P</i> = 0.011
S+C	1.60	0.92	2.77	<i>P</i> = 0.095
S+R	–	–	–	–
S+C+R	1.78	0.85	3.72	<i>P</i> = 0.129
Total	1.91	1.30	2.81	<i>P</i> = 0.001

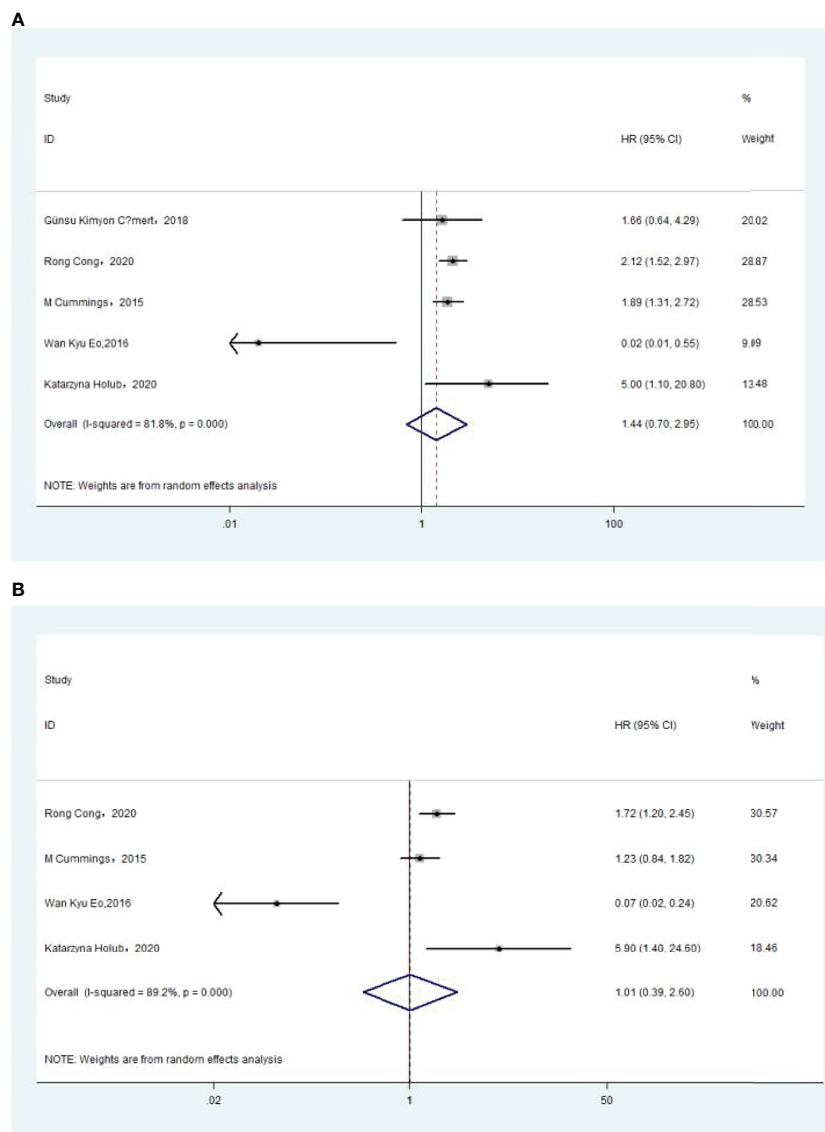


FIGURE 7 | (A) Relationship between monocyte–lymphocyte ratio (MLR) and overall survival (OS) in univariate analysis. **(B)** Relationship between MLR and OS in multivariate analysis.

TABLE 7 | The results of the subgroup analysis for monocyte–lymphocyte ratio (MLR) and overall survival are summarized below.

	Ua				Ma			
	HR	Lci	Hci	P	HR	Lci	Hci	P
MLR < 0.20	1.96	1.40	2.73	$P < 0.001$	2.30	0.51	10.36	$P = 0.278$
MLR \geq 0.2	0.23	0.00	22.06	$P = 0.528$	0.37	0.02	8.45	$P = 0.532$
Asian	0.23	0.00	22.06	$P = 0.528$	0.37	0.02	8.45	$P = 0.532$
Non-Asian	1.96	1.40	2.73	$P < 0.001$	2.30	0.51	10.36	$P = 0.278$
Sample < 300	0.33	0.00	73.90	$P = 0.688$	0.63	0.01	48.82	$P = 0.837$
Sample \geq 300	1.99	1.57	2.52	$P < 0.001$	1.47	1.06	2.04	$P = 0.022$
S	0.23	0.00	22.06	$P = 0.528$	0.37	0.02	8.45	$P = 0.532$
S+C	–	–	–	–	–	–	–	–
S+R	–	–	–	–	–	–	–	–
S+C+R	1.96	1.40	2.73	$P < 0.001$	2.30	0.51	10.36	$P = 0.278$
Total	1.44	0.70	2.95	$P = 0.325$	1.01	0.39	2.60	$P = 0.987$

Association of Pre-treatment MLR With DFS

The association between MLR and DFS was assessed in 2 studies in a univariate analysis consisting of 752 patients. Our meta-analysis showed that MLR was also not associated with DFS (HR, 0.36; 95% CI, 0.03–4.13; $p = 0.409$ in Ua) (**Figure 8**). A further subgroup analysis (**Table 8**) found that this correlation was not affected by race (non-Asian: HR, 1.22; 95% CI, 0.62–2.39; $p = 0.562$ in Ua) or MLR cutoff value (<0.20: HR, 1.22; 95% CI, 0.62–2.39; $p = 0.562$ in Ua) or sample size (≥ 300 : HR, 1.22; 95% CI, 0.62–2.39; $p = 0.562$ in Ua) or treatment (surgery + chemotherapy + radiation: HR, 1.22; 95% CI, 0.62–2.39; $p = 0.562$ in Ua).

Publication Bias Analysis

In the univariate analysis (Ua), 11 articles on the relationship between NLR and OS were included in the study. The funnel plots showed that NLR and overall survival were roughly symmetrical. The funnel plots showed a low probability of publication bias. Consistently, the Egger's test suggested that NLR and OS did not have a publication bias ($P = 0.384 > 0.05$) (**Figure 9**).

In the multivariate analysis (Ma), 10 articles on the relationship between NLR and OS were included in the study. The funnel plots showed a low probability of publication bias. Consistently, the Egger's test suggested that NLR and OS did not have a publication bias ($P = 0.986 > 0.05$) (**Figure 10**).

DISCUSSION

Our pooled data of prognosis in the endometrial cancer patients suggest that NLR or PLR was associated with OS and DFS, and NLR was associated with PFS only in a univariate analysis, but MLR was not associated with OS or DFS.

Previous studies of Liwei Ni et al. (30) had shown that high levels of pretreatment NLR and PLR were associated with decreased OS and DFS in patients with endometrial cancer. In our study, we more comprehensively analyzed the associations between inflammatory markers with PFS and added an inflammatory marker, which was MLR. However, Liwei Ni concluded that NLR higher than the cutoff was associated with a shorter OS and poorer PFS. In contrast, our further subgroup

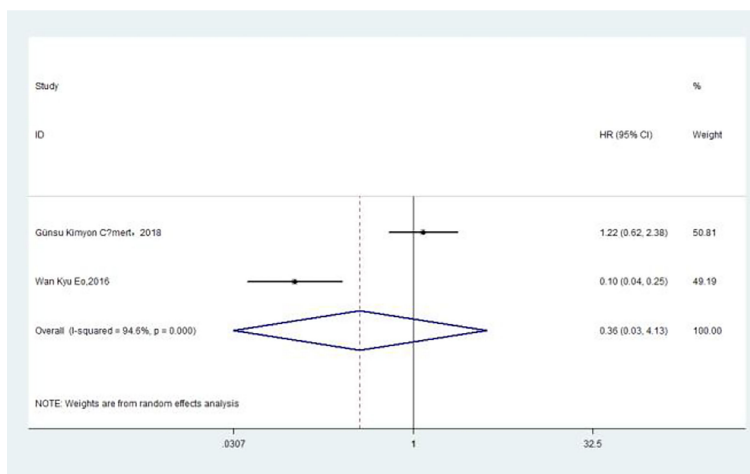
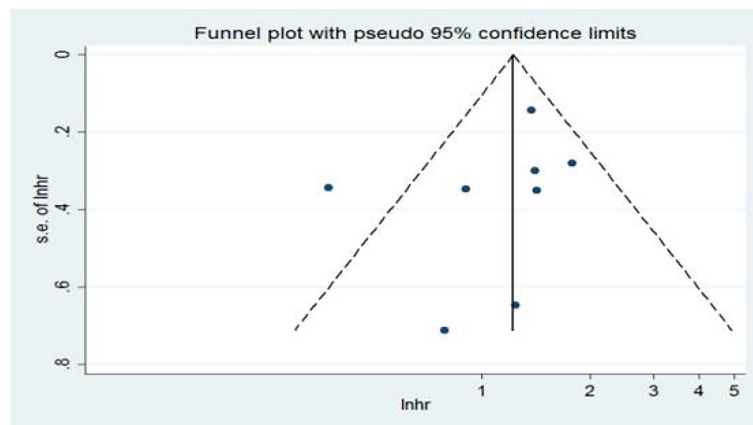
**FIGURE 8** | Relationship between monocyte–lymphocyte ratio and disease-free survival in univariate analysis.

TABLE 8 | The results of the subgroup analysis for monocyte–lymphocyte ratio (MLR) and disease-free survival are summarized below.

	HR	Lci	Ua		P
			Hci		
MLR < 0.2	1.22	0.62	2.39		<i>P</i> = 0.562
MLR ≥ 0.2	0.10	0.04	0.25		<i>P</i> < 0.001
Asian	0.10	0.04	0.25		<i>P</i> < 0.001
Non-Asian	1.22	0.62	2.39		<i>P</i> = 0.562
Sample < 300	0.10	0.04	0.25		<i>P</i> < 0.001
Sample ≥ 300	1.22	0.62	2.39		<i>P</i> = 0.562
S	0.10	0.04	0.25		<i>P</i> < 0.001
S+C	–	–	–		–
S+R	–	–	–		–
S+C+R	1.22	0.62	2.39		<i>P</i> = 0.562
Total	0.36	0.03	4.13		<i>P</i> = 0.409

**FIGURE 9** | Funnel plots of the relationship between neutrophil–lymphocyte ratio and overall survival in univariate analysis.

analysis showed that the higher levels of pretreatment markers (NLR ≥ 2.20, PLR ≥ 175, and MLR ≥ 0.20) were not relevant to poorer survival outcomes.

Campbell SD Roxburgh (31) first discovered the role of systemic inflammatory response in predicting the survival of cancer patients. He stated that the progression of a disease depended on the inflammatory response between the tumor and the host, and the systemic inflammatory response of the host was an important independent prognostic factor for tumor prognosis. Campbell SD Roxburgh had shown that preoperative measures of systemic inflammatory response predicted survival outcomes of operable cancers, not being affected by tumor stage. Clinically, the most common indicators of systemic inflammatory response in cancer patients are biochemical or hematological indicators. As the new prognostic biomarkers, NLR, PLR, and MLR have been the focus in recent years. Francesmary et al. (32) hypothesized that endometrial cancer might be associated with long-term inflammatory stimulation. The periodic stripping of the endometrium, known as menstruation, is essentially a chronic inflammatory process: the thickness of the endometrium is significantly thickened in the hyperplasia period, the stroma is highly edematous in the

middle stage of secretion, and the uterine spiral artery is proliferated and curled. In the menstrual period, prostaglandin stimulates the myometrium, causes uterine muscle contraction, and causes uterine spiral arteriole spasm for a long time; thus, the blood flow of the endometrium decreases, and endometrial ischemic necrosis occurred, eventually leading to the stripping of ischemic and necrotic endometrium. Due to “temporary amenorrhea” during pregnancy, the endometrium can rest and protect during pregnancy, reducing the possibility of endometrium malevolence. Infertility or delayed menopause increases the physiological inflammatory response time of the endometrium so that the endometrium is more likely to be exposed to an inflammatory environment, which increases the possibility of endometrium malevolence. Sun Tong et al. (33) found through Doppler ultrasound that there was abundant blood flow in the EC tumor tissue, and the detection rate of the blood flow in the tumor was more than 90%, which indicated that there was more angiogenesis in EC. Neutrophils secrete a large number of angiogenic factors in the blood circulation, which promote the rich blood flow in EC tumor tissue, and the formation and the distribution of blood vessels are extensive. Foreign literature had shown the peripheral hematological

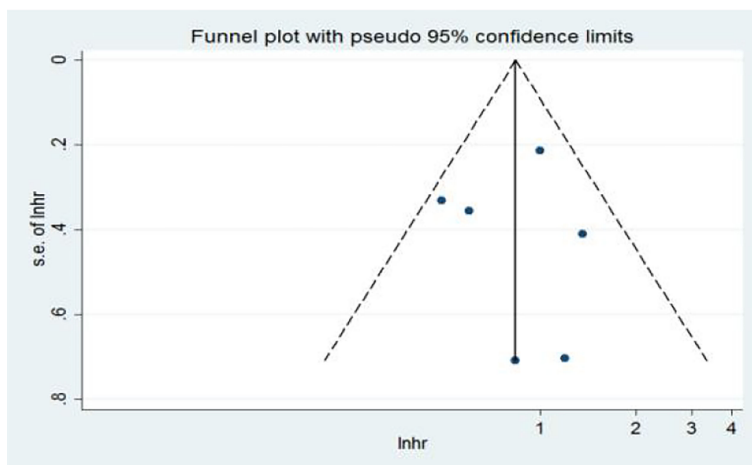


FIGURE 10 | Funnel plots of the relationship between neutrophil–lymphocyte ratio and overall survival in multivariate analysis.

changes in patients with EC: neutrophils increased, monocytes increased, and lymphocytes decreased, that is, NLR increased. The mechanism of NLR increase can be explained by the occurrence of an inflammatory reaction and an immune reaction in EC patients, the changes of blood inflammatory cells, and the production of corresponding antibodies in endometrial cells (34). Clinically, the peripheral hematological markers of inflammation in cancer patients are often associated with a relative increase in platelet count and a decrease in lymphocyte count. The increase in platelet count leads to platelet aggregation and platelet degranulation, which

promotes tumor angiogenesis (35). At the same time, growth factors secreted by platelets in large amounts accelerate the proliferation of tumor cells, enhance the invasion, adhesion, and metastasis functions of tumor cells, and aggravate the poor prognosis of cancer patients (36). Ural et al. (37) found in an endometrial biopsy that the PLR of EC patients was significantly higher than that of the normal group and the endometrial hyperplasia group—that is, PLR can distinguish patients in the EC group from those in the normal pathological group. Acmaz et al. (38) also showed that PLR in the dysplasia and cancer group was significantly higher than that in the normal control group. At

TABLE 9 | Survival outcomes of patients stratified according to neutrophil–lymphocyte ratio (NLR), platelet–lymphocyte ratio (PLR), and monocyte–lymphocyte ratio (MLR) cutoffs are summarized below.

	Ua		Ma	
	HR (95% CI)	P	HR (95% CI)	P
OS				
NLR < 2.20	2.62 (1.38–4.99)	<i>P</i> = 0.003	2.31 (1.44–3.70)	<i>P</i> < 0.001
NLR ≥ 2.20	2.50 (1.36–4.58)	<i>P</i> = 0.003	1.60 (1.09–2.36)	<i>P</i> = 0.016
PLR < 175	3.06 (2.32–4.05)	<i>P</i> < 0.001	1.78 (0.72–4.41)	<i>P</i> = 0.214
PLR ≥ 175	2.14 (1.10–4.15)	<i>P</i> = 0.025	1.83 (1.30–2.57)	<i>P</i> = 0.001
MLR < 0.20	1.96 (1.40–2.73)	<i>P</i> < 0.001	2.30 (0.51–10.36)	<i>P</i> = 0.278
MLR ≥ 0.20	0.23 (0.00–22.06)	<i>P</i> = 0.528	0.37 (0.02–8.45)	<i>P</i> = 0.532
PFS				
NLR < 2.20	2.36 (1.11–5.03)	<i>P</i> = 0.026	0.99 (0.40–2.45)	<i>P</i> = 0.983
NLR ≥ 2.20	1.40 (0.79–2.47)	<i>P</i> = 0.247	2.79 (1.72–4.53)	<i>P</i> < 0.001
PLR < 175	–	–	–	–
PLR ≥ 175	–	–	–	–
MLR < 0.20	–	–	–	–
MLR ≥ 0.20	–	–	–	–
DFS				
NLR < 2.20	2.20 (0.57–8.52)	<i>P</i> = 0.254	2.71 (1.26–5.82)	<i>P</i> = 0.011
NLR ≥ 2.20	2.70 (1.68–4.34)	<i>P</i> < 0.001	1.69 (0.89–3.23)	<i>P</i> = 0.110
PLR < 175	1.78 (0.85–3.72)	<i>P</i> = 0.129	–	–
PLR ≥ 175	2.03 (1.09–3.77)	<i>P</i> = 0.025	–	–
MLR < 0.20	1.22 (0.62–2.39)	<i>P</i> = 0.562	–	–
MLR ≥ 0.20	0.10 (0.04–0.25)	<i>P</i> < 0.001	–	–

95% CI, 95% confidence intervals; HR, hazard ratios; OS, overall survival; PFS, progression-free survival; DFS, disease-free survival; Ua, univariate analysis; Ma, multivariate analysis.

present, there is no literature report on NLR, PLR, and MLR combined score grouping to evaluate the prognosis of EC patients.

Previous studies reported that NLR or PLR or MLR level was significantly associated with a certain survival outcome—for instance, Günsu Kimyon Cömert et al. (18) showed that PLR was associated with worse OS, and the cutoff value of PLR was 168 for OS. However, NLR and MLR were not associated with worse OS or DFS. Tadashi Aoyama et al. (19) found that NLR was associated with lymph node metastasis and that PLR was associated with worse PFS. Their receiver operating characteristic curves demonstrated that the best cutoff value of NLR for predicting lymph node metastasis was 2.18 and that of PLR was 206. The study of Rong Cong et al. (16) indicates that pretreatment NLR, PLR, and MLR are independent prognostic markers for OS in EC patients, and the combination of NLR, PLR, and MLR provides a better prognostic value than any single ratio. The cutoff value is 2.14 for NLR, 131.82 for PLR, and 0.22 for MLR. Cummings M (20) showed that both NLR and PLR were independent prognostic indicators for endometrial cancer for overall survival. MLR was also associated with worse OS only in the univariable analysis. The study of Ling Ding (21) showed that NLR and PLR were associated with worse OS and DFS, and the cutoff value of PLR was 123.5 and of NLR was 1.81. Wan Kyu Eo (22) found that MLR was associated with worse OS and DFS. Tomoko Haruma (23) showed that the DFS and OS rates of patients with a high NLR were significantly shorter than those for patients with a low NLR. Tomoko Haruma thought that pretreatment NLR is a predictor of poor prognosis in endometrial cancer. Jianpei Li (15) had first found that CRP, except NLR or PLR, was identified as an independent prognostic factor in endometrial cancer. Isa Temur (24), Miaolong He (25), and Jing Wang (27) respectively reported that NLR was shown to be an independent prognostic biomarker in endometrium cancer. Holub (26) showed that pre-treatment NLR and MLR were associated with a worse survival outcome in endometrial cancer patients, and the cutoff value was 2.2 for NLR, 0.18 for MLR. Different studies choose different cutoff values and have different sample sizes. We pooled these studies to arrive at a fairly reliable conclusion. However, we do know that, in many studies NLR, PLR, and MLR are used as a continuous rather than a dichotomous variable, and the cutoff is really variable across studies. The fixed cutoff value by our article, such as 2.2 for NLR, should not be generalized. The selection of a cutoff value has limitations, and we still need a larger-sample-size study to determine a more clinically meaningful cutoff value.

However, some limitations in our meta-analysis should be mentioned. First, all of the included studies were retrospectively observational studies; thus, our results were based on unadjusted

estimates; more accurate outcomes would result from adjustments for other confounders, such as age, body mass index, lifestyle, and so on. Second, the articles that only included 14 eligible studies, including 5,274 patients in this analysis, were insufficient, especially in terms of the subgroup analysis—the sample size might not be large enough to support the outcome stability and to conduct detailed subgroup analyses. Thus, a potential publication bias is very likely to exist in spite of the fact that no evidence was obtained from our statistical tests. Third, the language of the studies was limited to English and Chinese, which may result in potential language bias. What is more, the variable cutoff values of NLR (and PLR and MLR) might bring about noticeable heterogeneity, and the insight into whether these values were influenced by other conditions remains uncertain.

As new prognostic biomarkers, NLR, PLR, and MLR have been the subject of intense research in recent years. The remarkable advantages of the prognostic factor (NLR, PLR, and MLR) are that they can be obtained from routine clinical blood tests, which is convenient, affordable, and repeatable. They represent the dawn of the age of prognosis.

CONCLUSIONS

In summary, our results indicated that pretreatment NLR and PLR were biomarkers of poor prognosis in patients with endometrial cancer. The results (shown in **Table 9**) indicated that NLR or PLR was associated with OS and DFS, and NLR was associated with PFS only in the univariate analysis, but MLR was not associated with OS or DFS. Larger sample sizes of different ethnic populations are required to confirm our findings.

DATA AVAILABILITY STATEMENT

The original contributions presented in the study are included in the article/**Supplementary Material**. Further inquiries can be directed to the corresponding author/s.

AUTHOR CONTRIBUTIONS

JL: project development, data collection, data analysis, manuscript writing. FW: data collection. LZ: project development. All authors contributed to the article and approved the submitted version.

SUPPLEMENTARY MATERIAL

The Supplementary Material for this article can be found online at: <https://www.frontiersin.org/articles/10.3389/fonc.2022.734948/full#supplementary-material>

REFERENCES

- Amant F, Moerman P, Neven P, Timmerman D, Van Limbergen E, Vergote I. Endometrial Cancer. *Lancet (Lond Engl)* (2005) 366(9484):491–505. doi: 10.1016/S0140-6736(05)67063-8
- Smrz SA, Calo C, Fisher JL, Salani R. An Ecological Evaluation of the Increasing Incidence of Endometrial Cancer and the Obesity Epidemic. *Am J Obstet Gynecol* (2021) 224(5):506.e1–8. doi: 10.1016/j.ajog.2020.10.042
- Qi J, Gao G. The Incidence and the Changing Tendency of Attack Age of Cervical Cancer and Endometrial Cancer in 22 Years. *J Chin J Clin Oncol* (2001) 07):39–41.
- Fung-Kee-Fung M, Dodge J, Elit L, Lukka H, Chambers A, Oliver T. Follow-Up After Primary Therapy for Endometrial Cancer: A Systematic

- Review. *Gynecol Oncol* (2006) 101(3):520–9. doi: 10.1016/j.ygyno.2006.02.011
5. Azab B, Bhatt VR, Phookan J, Murukutla S, Kohn N, Terjanian T, et al. Usefulness of the Neutrophil-to-Lymphocyte Ratio in Predicting Short- and Long-Term Mortality in Breast Cancer Patients. *Ann Surg Oncol* (2012) 19(1):217–24. doi: 10.1245/s10434-011-1814-0
 6. Cho H, Hur HW, Kim SW, Kim SH, Kim JH, Kim YT, et al. Pre-Treatment Neutrophil to Lymphocyte Ratio is Elevated in Epithelial Ovarian Cancer and Predicts Survival After Treatment. *Cancer Immunol Immunother CII* (2009) 58(1):15–23. doi: 10.1007/s00262-008-0516-3
 7. Mjaess G, Chebel R, Karam A, Moussa I, Pretot D, Abi Tayeh G, et al. Prognostic Role of Neutrophil-to-Lymphocyte Ratio (NLR) in Urological Tumors: An Umbrella Review of Evidence From Systematic Reviews and Meta-Analyses. *Acta Oncol (Stockholm Sweden)* (2021) 60(6):704–13. doi: 10.1080/0284186X.2021.1886323
 8. Bhatti I, Peacock O, Lloyd G, Larvin M, Hall RI. Preoperative Hematologic Markers as Independent Predictors of Prognosis in Resected Pancreatic Ductal Adenocarcinoma: Neutrophil-Lymphocyte Versus Platelet-Lymphocyte Ratio. *Am J Surgery* (2010) 200(2):197–203. doi: 10.1016/j.amjsurg.2009.08.041
 9. Gücer F, Moser F, Tamussino K, Reich O, Haas J, Arikian G, et al. Thrombocytosis as a Prognostic Factor in Endometrial Carcinoma. *Gynecologic Oncol* (1998) 70(2):210–4. doi: 10.1006/gy.1998.5078
 10. Shimada H, Takiguchi N, Kainuma O, Soda H, Ikeda A, Cho A, et al. High Preoperative Neutrophil-Lymphocyte Ratio Predicts Poor Survival in Patients With Gastric Cancer. *Gastric Cancer Off J Int Gastric Cancer Assoc Japanese Gastric Cancer Assoc* (2010) 13(3):170–6. doi: 10.1007/s10120-010-0554-3
 11. Tomita M, Shimizu T, Ayabe T, Yonei A, Onitsuka T. Preoperative Neutrophil to Lymphocyte Ratio as a Prognostic Predictor After Curative Resection for non-Small Cell Lung Cancer. *Anticancer Res* (2011) 31(9):2995–8.
 12. Gomez D, Morris-Stiff G, Toogood GJ, Lodge JP, Prasad KR. Impact of Systemic Inflammation on Outcome Following Resection for Intrahepatic Cholangiocarcinoma. *J Surg Oncol* (2008) 97(6):513–8. doi: 10.1002/jso.21001
 13. Weimu X, Xu S, Liu J, Luo M, Tan H, Fan X, et al. Clinical Significance of Preoperative Neutrophil-Lymphocyte Ratio in Prognosis Evaluation of Patients With Hepatocellular Carcinoma. *J Med Equipment* (2018) 31(24):51–2.
 14. Zhao G, Hu Y, Liu R, Shi F, Li H, Wang D, et al. Clinical Significance of Preoperative Neutrophil-Lymphocyte Ratio in Prognosis Assessment of Laryngeal Carcinoma. *J Chin J Otolaryngol Head Neck Surgery* (2016) 51(02):112–6.
 15. Li J, Lin J, Luo Y, Kuang M, Liu Y. Multivariate Analysis of Prognostic Biomarkers in Surgically Treated Endometrial Cancer. *PLoS One* (2015) 10(6):1–11. doi: 10.1371/journal.pone.0130640
 16. Cong R, Kong F, Ma J, Li Q, Wu Q, Ma X. Combination of Preoperative Neutrophil-Lymphocyte Ratio, Platelet-Lymphocyte Ratio and Monocyte-Lymphocyte Ratio: A Superior Prognostic Factor of Endometrial Cancer. *BMC Cancer* (2020) 20(1):1–11. doi: 10.1186/s12885-020-06953-8
 17. Wells G, Shea BO, Connell D. *The Newcastle-Ottawa Scale (Nos) For Assessing The Quality Of Nonrandomized Studies In Meta-Analysis*. Available at: http://www.ohri.ca/programs/clinical_epidemiology/oxford_web.ppt.
 18. Cömert GK, Türkmen O, Kar I, Sinaci S, Ergani SY, Karalök A, et al. Independent Predictors of Survival in Endometrium Cancer: Platelet-To-Lymphocyte Ratio and Platelet/Neutrophil/Monocyte-to-Lymphocyte Ratio. *J Turkish-German Gynecol Assoc* (2018) 19(2):78–86. doi: 10.4274/jtgg.2017.0112
 19. Aoyama T, Takano M, Miyamoto M, Yoshikawa T, Kato K, Sakamoto T, et al. Pretreatment Neutrophil-To-Lymphocyte Ratio Was a Predictor of Lymph Node Metastasis in Endometrial Cancer Patients. *Oncol (Switzerland)* (2019) 96(5):259–67. doi: 10.1159/000497184
 20. Cummings M, Merone L, Keeble C, Burland L, Grzelinski M, Sutton K, et al. Preoperative Neutrophil:Lymphocyte and Platelet:Lymphocyte Ratios Predict Endometrial Cancer Survival. *Br J Cancer* (2015) 113(2):311–20. doi: 10.1038/bjc.2015.200
 21. Ding L, Ding Y, Mao XH, Zhao JF, Zhou HJ. Retrospective Study of the Prognostic Significance of Neutrophil-to-Lymphocyte Ratio for Postsurgical Outcomes of Patients With Endometrial Carcinoma. *Int J Gynecol Obstetrics* (2017) 138(3):311–9. doi: 10.1002/ijgo.12230
 22. Eo WK, Kwon S, Koh SB, Kim MJ, Ji YI, Lee JY, et al. The Lymphocyte-Monocyte Ratio Predicts Patient Survival and Aggressiveness of Endometrial Cancer. *J Cancer* (2016) 7(5):538–45. doi: 10.7150/jca.14206
 23. Haruma T, Nakamura K, Nishida T, Ogawa C, Kusumoto T, Seki N, et al. Pre-Treatment Neutrophil to Lymphocyte Ratio is a Predictor of Prognosis in Endometrial Cancer. *Anticancer Res* (2015) 35(1):337–44.
 24. Temur I, Kucukgoz Gulec U, Paydas S, Guzel AB, Sucu M, Vardar MA. Prognostic Value of Pre-Operative Neutrophil/Lymphocyte Ratio, Monocyte Count, Mean Platelet Volume, and Platelet/Lymphocyte Ratio in Endometrial Cancer. *Eur J Obstetrics Gynecol Reprod Biol* (2018) 226:25–9. doi: 10.1016/j.ejogrb.2018.05.028
 25. He M. *The Prognostic Value of Preoperative Neutrophilic Lymphocyte Ratio in Endometrioid Adenocarcinoma [Master]*. Jinan: Shandong University (2013).
 26. Holub K, Busato F, Gouy S, Sun R, Pautier P, Genestie C, et al. Analysis of systemic inflammatory factors and survival outcomes in endometrial cancer patients staged I-III FIGO and treated with postoperative external radiotherapy. *J Clin Med* (2020) 9(5):1–13. doi: 10.3390/jcm9051441
 27. Wang J, Lu X. Relationship Between Preoperative Neutrophils/Lymphocytes Ratio and Prognosis in Patients With Endometrial Cancer Staging. *J Chin J Surg Oncol* (2016) 8(6):377–80.
 28. Kiuchi K, Hasegawa K, Ochiai S, Motegi E, Kuno T, Kosaka N, et al. Prognostic Significance of Inflammatory Parameters and Nutritional Index in Clinical Stage IVB Endometrial Carcinomas. *J Obstetrics Gynaecol* (2019) 39(2):237–41. doi: 10.1080/01443615.2018.1494703
 29. Takahashi R, Mabuchi S, Kawano M, Sasano T, Matsumoto Y, Kuroda H, et al. Prognostic Significance of Systemic Neutrophil and Leukocyte Alterations in Surgically Treated Endometrial Cancer Patients: A Monoinstitutional Study. *Gynecologic Oncol* (2015) 137(1):112–8. doi: 10.1016/j.ygyno.2015.02.006
 30. Ni L, Tao J, Xu J, Yuan X, Long Y, Yu N, et al. Prognostic Values of Pretreatment Neutrophil-to-Lymphocyte and Platelet-to-Lymphocyte Ratios in Endometrial Cancer: A Systematic Review and Meta-Analysis. *Arch Gynecol Obstetrics* (2020) 301(1):251–61. doi: 10.1007/s00404-019-05372-w
 31. Roxburgh CS, McMillan DC. Role of Systemic Inflammatory Response in Predicting Survival in Patients With Primary Operable Cancer. *Future Oncol (Lond Engl)* (2010) 6(1):149–63. doi: 10.2217/fon.09.136
 32. Modugno F, Ness RB, Chen C, Weiss NS. Inflammation and Endometrial Cancer: A Hypothesis. *Cancer epidemiol Biomarkers Prev Publ Am Assoc Cancer Res Cosponsored by Am Soc Prev Oncol* (2005) 14(12):2840–7. doi: 10.1158/1055-9965.EPI-05-0493
 33. Sun T, Zhang W. Detection of Blood Flow in Endometrial Carcinoma and its Relationship With MVD and VEGF Expression by Color Doppler. *Chin J Ultrasound Med* (2003) 19(5):382–4.
 34. Kwon HC, Kim SH, Oh SY, Lee S, Lee JH, Choi HJ, et al. Clinical Significance of Preoperative Neutrophil-Lymphocyte Versus Platelet-Lymphocyte Ratio in Patients With Operable Colorectal Cancer. *Biomarkers Biochem Indic Exposure Response Susceptibility to Chemicals* (2012) 17(3):216–22. doi: 10.3109/1354750X.2012.656705
 35. Seki N, Kodama J, Hongo A, Miyagi Y, Yoshinouchi M, Kudo T. Angiogenesis and Platelet-Derived Endothelial Cell Growth Factor/Thymidine Phosphorylase Expression in Endometrial Cancer. *Int J Oncol* (1999) 15(4):781–6. doi: 10.3892/ijo.15.4.781
 36. Zhou X, Du Y, Huang Z, Xu J, Qiu T, Wang J, et al. Prognostic Value of PLR in Various Cancers: A Meta-Analysis. *PLoS One* (2014) 9(6):e101119. doi: 10.1371/journal.pone.0101119
 37. Ural ÜM, Şehitoğlu İ, Tekin YB, Şahin FK. Neutrophil-To-Lymphocyte and Platelet-to-Lymphocyte Ratios in Patients With Endometrial Hyperplasia and Endometrial Cancer. *J Obstetrics Gynaecol Res* (2015) 41(3):445–8. doi: 10.1111/jog.12536
 38. Acmaz G, Aksoy H, Unal D, Ozyurt S, Cingillioglu B, Aksoy U, et al. Are Neutrophil/Lymphocyte and Platelet/Lymphocyte Ratios Associated With Endometrial Precancerous and Cancerous Lesions in Patients With Abnormal Uterine Bleeding? *Asian Pacific J Cancer Prev APJCP* (2014) 15(4):1689–92. doi: 10.7314/APJCP.2014.15.4.1689

Conflict of Interest: The authors declare that the research was conducted in the absence of any commercial or financial relationships that could be construed as a potential conflict of interest.

Publisher's Note: All claims expressed in this article are solely those of the authors and do not necessarily represent those of their affiliated organizations, or those of the publisher, the editors and the reviewers. Any product that may be evaluated in

this article, or claim that may be made by its manufacturer, is not guaranteed or endorsed by the publisher.

Copyright © 2022 Leng, Wu and Zhang. This is an open-access article distributed under the terms of the Creative Commons Attribution License (CC BY). The use,

distribution or reproduction in other forums is permitted, provided the original author(s) and the copyright owner(s) are credited and that the original publication in this journal is cited, in accordance with accepted academic practice. No use, distribution or reproduction is permitted which does not comply with these terms.