



OPEN ACCESS

EDITED BY

Airazat M. Kazaryan,
Østfold Hospital, Norway

REVIEWED BY

Mushegh Sahakyan,
Oslo University Hospital, Norway
Mikhail Efanov,
A.S.Loginov Moscow Clinical Scientific
Centre, Russia
Alexander Sazhin,
Pirogov Russian National Research
Medical University, Russia

*CORRESPONDENCE

Wei Guo
guoweicccmu.edu.cn

[†]These authors have contributed
equally to this work

SPECIALTY SECTION

This article was submitted to
Surgical Oncology,
a section of the journal
Frontiers in Oncology

RECEIVED 06 September 2022

ACCEPTED 12 October 2022

PUBLISHED 10 November 2022

CITATION

Wang D, Lin H, Guan C, Zhang X, Li P,
Xin C, Yang X, Feng Z, Min Y, Gu X and
Guo W (2022) Impact of preoperative
biliary drainage on postoperative
complications and prognosis after
pancreaticoduodenectomy: A single-
center retrospective cohort study.
Front. Oncol. 12:1037671.
doi: 10.3389/fonc.2022.1037671

COPYRIGHT

© 2022 Wang, Lin, Guan, Zhang, Li, Xin,
Yang, Feng, Min, Gu and Guo. This is an
open-access article distributed under
the terms of the [Creative Commons
Attribution License \(CC BY\)](https://creativecommons.org/licenses/by/4.0/). The use,
distribution or reproduction in other
forums is permitted, provided the
original author(s) and the copyright
owner(s) are credited and that the
original publication in this journal is
cited, in accordance with accepted
academic practice. No use,
distribution or reproduction is
permitted which does not comply with
these terms.

Impact of preoperative biliary drainage on postoperative complications and prognosis after pancreaticoduodenectomy: A single-center retrospective cohort study

Dong Wang^{1†}, Huajun Lin^{1†}, Chengjian Guan¹,
Xiaodong Zhang¹, Peixin Li^{1,2}, Chenglin Xin¹, Xiaobao Yang¹,
Zhewen Feng¹, Yiyang Min¹, Xiaozhe Gu¹ and Wei Guo^{1*}

¹Department of General Surgery, Beijing Friendship Hospital, Capital Medical University and National Clinical Research Center for Digestive Diseases, Beijing, China, ²Department of Comprehensive Surgery, Beijing Friendship Hospital, Capital Medical University and National Clinical Research Center for Digestive Diseases, Beijing, China

Background and objectives: Obstructive jaundice is common in patients with pancreaticobiliary malignancies. Preoperative biliary drainage (PBD) can alleviate cholestasis; however, no consensus has been reached on the impact of PBD on the incidence of surgery-related complications and patient survival. This study aimed to evaluate the effect among patients treated with PBD.

Methods: This retrospective study examined the clinical and follow-up prognostic data of 160 patients with pancreaticobiliary malignancies who underwent pancreaticoduodenectomy (PD) at Beijing Friendship Hospital, Capital Medical University, from January 2016 to July 2020. Outcomes were compared between patients who underwent PBD (PBD group) and those who did not (control group). Changes in biochemical indicators were evaluated before and after drainage in the PBD group. Between-group differences in inflammatory indicators after PD were assessed using the Wilcoxon signed-rank test. Postoperative complications were classified according to the Clavien-Dindo classification system. The effects of PBD and biliary drainage efficiency on postoperative complications were evaluated using the chi-square test and binary logistics regression. The Kaplan-Meier analysis was used for between-group comparison of survival analysis. Univariate and multivariate regression analyses were performed to identify prognostic factors of survival.

Results: Total 160 patients were enrolled, the mean age of the study sample was 62.75 ± 6.75 years. The distribution of pancreaticobiliary malignancies was

as follows: 34 cases of pancreatic head cancer, 61 cases of distal bile duct cancer, 20 cases of duodenal papilla cancer, 39 cases of duodenal ampullary cancer, and 6 cases of malignant intraductal papillary mucinous neoplasm (IPMN). PBD was performed in 90 of the 160 patients, with PBD performed using an endoscopic retrograde cholangiopancreatography (ERCP) approach in 55 patients and with percutaneous transhepatic cholangiography (PTC) used in the remaining 35 cases. The mean duration of drainage in the PBD group was 12.8 ± 8.8 days. The overall rate of complications was 48.05% (37/77) in the control group and 65.55% (59/90) in the PBD group with non-significant difference ($\chi^2 = 3.527$, $p=0.473$). In logit regression analysis, PBD was also not a risk factor for postoperative complications (OR=1.77, $p=0.709$). The overall rate of postoperative complications was significantly higher among patients who underwent PBD for >2 weeks ($\chi^2 = 6.102$, $p=0.013$), with the rate of severe complications also being higher for this subgroup of PBD patients ($\chi^2 = 4.673$, $p=0.03$). The overall survival time was 47.9 ± 2.45 months, with survival being slightly lower in the PBD group (43.61 ± 3.26 months) than in the control group (52.24 ± 3.54 months), although this difference was not significant (hazard ratio (HR)=0.65, $p=0.104$).

Conclusion: In patients with malignant biliary obstruction, PBD does not affect the incidence of postoperative complications after pancreaticoduodenectomy nor does it affect patient survival. Prolonged biliary drainage (>2 weeks) may increase the incidence of overall postoperative complications and severe complications.

KEYWORDS

preoperative biliary drainage, obstructive jaundice, pancreaticoduodenectomy, surgery-related complications, survival prognosis

Introduction

Ampullary malignancies, such as pancreatic head, duodenal papilla, and distal bile duct cancers, are common malignancies of the pancreaticobiliary system (1, 2). The clinical efficacy of treatment for these cancers, however, is low, with the prognosis generally being poor (1, 2). Moreover, malignant biliary obstruction, leading to jaundice due to poor bile drainage caused by compression of the bile duct, is common in these patients (3). Worsening of cholestasis is associated with abnormal liver function, electrolyte disturbance, and decreased nutritional status, which may have a negative impact on patients' tolerance for surgery and increase the incidence of postoperative complications (4, 5). Accordingly, preoperative biliary drainage (PBD) has become an important clinical component of the presurgical management of patients with ampullary malignancies (6). However, although extensive studies have been conducted in this regard at various clinical centers worldwide, there is

currently no consensus as to whether PBD affects the incidence of post-pancreaticoduodenectomy complications and patient survival.

To address this knowledge gap, this retrospective cohort study aimed to evaluate the impact of PBD on the incidence of surgery-related complications and patient survival after pancreaticoduodenectomy (PD).

Material and methods

Statement of ethics

The methods of our study were approved by the ethics committee of Beijing Friendship Hospital, Capital Medical University (approval number: 2022-P2-104-01). This study complies with the Declaration of Helsinki, and all patients obtained informed consent before being included in this clinical study.

Study sample

In this retrospective cohort study, the study sample included 160 patients with ampullary malignancies who underwent PD from January 2016 to July 2020 at the Beijing Friendship Hospital of Capital Medical University.

The included patients consisted of 94 males and 66 females, with an average age of 62.75 ± 6.75 years. They were divided into a PBD group (n=90) and a control group (n=70) according to whether they underwent PBD. The inclusion criteria were as follows: (1) ampullary malignancies (including pancreatic head, distal bile duct, duodenal papilla, and duodenal ampulla malignancies) as well as malignant intraductal papillary mucinous neoplasm (IPMN); (2) absence of distant organ metastases confirmed on preoperative assessment; and (3) clear pathological diagnosis and complete clinical data. The exclusion criteria were as follows: (1) PD combined with resection of other organs; (2) preoperative neoadjuvant therapy; (3) history of biliary drainage prior to admission; and (4) patient refusal to participate and/or incomplete clinical data. Based on the experience of our center, the indications for preoperative biliary drainage in patients with periampullary cancer include: cholangitis secondary to biliary obstruction, patients with severe pruritus, comorbidities requiring present the work - up and coagulopathy. In consideration of the different clinical features of patients with different pathological types, the patients were divided into pancreatobiliary type and intestinal adenocarcinoma type according to histology.

Data collection

The following clinical data were retrospectively extracted from patients' medical records for analysis: sex, age, body mass index (BMI), American Society of Anesthesiologists (ASA) classification, preoperative tumor markers, biochemical indicators, surgical approach, intraoperative blood loss volume, pancreaticojejunal anastomosis, and pathologic tumor type. PD-related complications considered in this study were pancreatic fistula, biliary leak, intra-abdominal bleeding, gastrointestinal bleeding, intra-abdominal infection, gastric emptying disorder, pulmonary infection, cardiopulmonary insufficiency, and pleural effusion, with the severity of these complications being determined according to the Clavien-Dindo classification system (7). Complications with a Clavien-Dindo grade ≥ 3 were considered severe. Based on the consensus of the International Study Group on Pancreatic Surgery, pancreatic fistula was defined as a drainage fluid amylase level >3 -fold the upper limit of normal blood amylase level at ≥ 3 days postoperatively, along with related clinical symptoms, such as abdominal pain. The neutrophil-lymphocyte ratio (NLR) and C-reactive protein to albumin ratio (CAR) on postoperative days 1

and 3 were used as indicators of the systemic inflammatory status. In our center, patients were followed up every 3 months in the outpatient or internet clinic during the first postoperative year and every 3-6 months in the outpatient or internet clinic during the 2nd to 3rd year after surgery. Every 6 months in the outpatient, internet clinic or telephone follow-up continued for 3 years after surgery until death. In this study, 150 patients were followed up regularly, 10 patients were lost to follow-up, and the mean follow-up time was 47.9 months.

PBD and PD methods

Methods for preoperative jaundice reduction included endoscopic biliary stenting (ENBD), endoscopic retrograde cholangiopancreatography (ERCP), percutaneous transhepatic cholangiography drainage (PTCD), or bile duct stenting, as appropriate for each patient. All procedures were performed by experienced endoscopists in the Gastroenterology Department at our hospital. In order to clarify the effect of different biliary drainage methods on postoperative complications, patients in the PBD group were divided into antegrade group and retrograde group according to the biliary drainage method in subgroup analysis. Biliary drainage *via* PTC was defined as the antegrade group, and biliary drainage *via* ERCP was defined as the retrograde group. In all patients, PD was performed *via* an open or laparoscopic approach by chief surgeons who had extensive surgical experience. Regional lymph node dissection was routinely performed. Digestive tract reconstruction was performed using the classical Child's method, with either a mucosa-to-mucosa pancreatojejunostomy anastomosis or other anastomosis approach, as appropriate for each patient.

Statistical analysis

Baseline patient information is presented as categorical or continuous variables, as appropriate, with between-group differences evaluated using the chi-squared test or independent sample t-test for categorical or continuous variables, respectively. Both PBD-induced changes in biochemical indicator levels and the impact of biliary drainage duration on the efficiency jaundice reduction were assessed using Wilcoxon signed-rank test and graphically presented (ggplot2, R package, version 3.3.3). The distribution of the efficiency of jaundice reduction for different PBD durations was graphically presented using ridge plots (ggridge, R package, version 0.5.3 R Foundation for Statistical Computing, Vienna, Austria. URL <https://www.R-project.org/>) with the efficiency of jaundice reduction on the rate of postoperative complications evaluated using the chi-squared test. The rate of postoperative

complications was compared between the PBD and control groups, including a between-group comparison in postoperative inflammatory indicators using a Mann-Whitney U test and graphical representations (ggplot2, R package, version 3.3.3). For the occurrence of postoperative complications, we also conducted binary logistics regression analysis to eliminate confounding factors. Survival analysis was performed using the R package survival program (version 3.2-10) and graphically presented (survminer, R package, version 0.4.9). All analyses were performed using SPSS (version 26.0) and R (version 3.6.3), with a P-value <0.05 considered statistically significant.

Results

General information

Of the 160 patients enrolled in the study, 70 were included in the control group and 90 in the PBD group. In the PBD group, 55 patients were treated with endoscopic nasobiliary drainage (ENBD) or biliary stents placed through ERCP and 35 with PTCD. No significant differences were noted between the PBD and control groups in baseline clinical characteristics, including sex, age, BMI, ASA classification, preoperative CA199 level, preoperative aspartate aminotransferase (AST), preoperative alanine aminotransferase (ALT), preoperative prothrombin time (PT), history of upper abdominal surgery, surgical approach, surgical duration, intraoperative blood loss, pancreaticejeunal anastomosis, pathologic type, and tumor grade (all $p > 0.05$). In the last laboratory examination before surgery, total bilirubin (TB) and direct bilirubin (DB) levels were higher in the PBD group than in the control group, while albumin level was significantly lower in the PBD group than in the control group (all $p < 0.05$, Table 1).

Efficiency of preoperative jaundice reduction and PBD duration

The time interval from PBD to PD was defined as the duration of biliary drainage, which ranged from 1 day to 50 days (median, 1.5 days; mean, 12.85 days; standard deviation, ± 8.87 days). The efficiency in jaundice reduction or improvement in liver function was calculated as follows: biochemical indicator level before PBD – the most recent biochemical indicator level before PD/biochemical indicator level before PBD. In the PBD group, a significant improvement was noted in TB, DB, AST, and ALT levels (improve efficiency between 38.66%–56.95%) after biliary drainage, which was indicative of a partial relief of the cholestasis and restoration of liver function. The efficiency of jaundice reduction improved with increasing duration of PBD ($p < 0.05$, Figures 1A–E).

Impact of PBD duration and jaundice reduction efficiency on post-PD complications

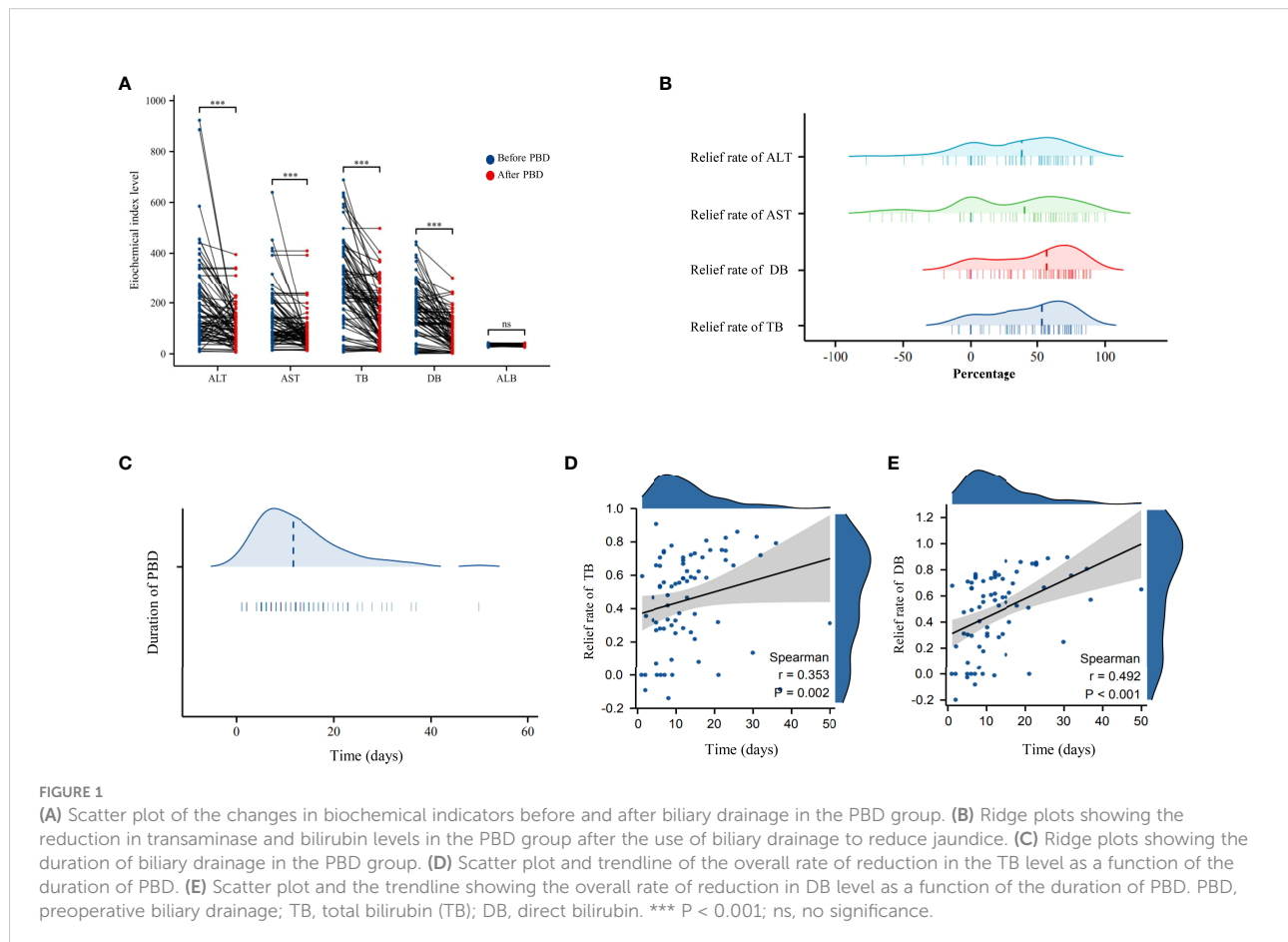
The overall rate of complications was 60% (96/160): 65.55% (59/90) in the PBD group and 52.86% (37/70) in the control group. The overall rate of severe complications was 18.75% (30/160): 21.11% (19/90) in the PBD group and 15.71% (11/70) in the control group, with no significant between-group difference noted. The overall rate of grade B/C pancreatic fistula as a complication was 20% (32/160): 21.11% (19/90) in the PBD group and 18.57% (13/70) in the control group. The overall rate of intra-abdominal or gastrointestinal bleeding was 20% (32/160): 23.33% (21/90) in the PBD group and 15.71% (11/70) in the control group. The overall rate of gastric emptying disorder was 16.25% (26/160): 17.77% (16/90) in the PBD group and 14.28% (10/70) in the control group. The overall rate of intra-abdominal infection was 15% (24/160): 14.44% (13/90) in the PBD group and 15.71% (11/70) in the control group (Figure 2A). No significant between-group difference was noted for each complication reported (all $p > 0.05$, Table 2). In order to eliminate confounding factors and more accurately assess the impact of biliary drainage itself on postoperative complications, we performed logistics regression analysis on the risk factors of postoperative pancreatic fistula. The results suggested that the diameter of pancreatic duct was a risk factor for postoperative pancreatic fistula (OR=0.597, $p=0.013$, Table 3). Then we included these risk factors as covariates to conduct logistics regression analysis on the occurrence of postoperative complications. The results suggested that the histology of tumor was a risk factor for postoperative complications (OR=2.17, $p=0.048$), while preoperative biliary drainage (OR=1.77, $p=0.709$, Table 4) and other included factors were not risk factors for postoperative complications. In binary logistics regression analysis of severe postoperative complications, the results suggested that preoperative biliary drainage was still not a risk factor (OR=1.89, $p=0.388$, Table 5). In order to analyze the effect of preoperative biliary drainage on postoperative complications, patients in the PBD group were divided into antegrade group and retrograde group, and compared with the control group, the results showed that there was no significant difference in the incidence of complications ($p > 0.05$, Tables S1, S2).

We further analyzed the effect of the duration of PBD and biliary drainage efficiency on postoperative complications. For a drainage duration of <1 week, there were no significant differences in the overall rate of complications nor the overall rate of severe complications, pancreatic fistula, and grade B/C pancreatic fistula, compared with that noted in the control group ($p > 0.05$, Table 6). In contrast, for a drainage duration >2 weeks, the overall rate of complications was higher for the PBD subgroup than for the control group (87.09% vs 56.14%, $p=0.013$, Table 6), as was the rate of severe complications

TABLE 1 Demographic and clinical characteristics of the patients at baseline.

| | Control group (n = 70) | PBD group (n = 90) | statistic (χ^2 or t value) | p value |
|----------------------------------------|------------------------|--------------------|----------------------------------|---------|
| Gender | | | | |
| Male | 39 | 55 | 0.473 | 0.491 |
| Female | 31 | 35 | | |
| Age, years | | | | |
| <65 | 47 | 56 | 0.415 | 0.519 |
| \geq 65 | 23 | 34 | | |
| Body-mass index, kg/m ² | | | | |
| \leq 24 | 35 | 50 | 0.488 | 0.484 |
| >24 | 35 | 40 | | |
| ASA classification | | | | |
| I-II | 41 | 48 | 0.437 | 0.508 |
| III-IV | 29 | 42 | | |
| CA199, U/ml | | | | |
| \leq 35 | 27 | 27 | 1.293 | 0.255 |
| >35 | 43 | 63 | | |
| Laboratory Examination(Mean \pm SEM) | | | | |
| TB, μ mol/L | 76.71 \pm 10.76 | 131.95 \pm 11.24 | -3.475 | 0.001 |
| DB, μ mol/L | 41.39 \pm 6.75 | 76.04 \pm 6.91 | -3.522 | 0.001 |
| AST, U/L | 80.75 \pm 9.38 | 80.42 \pm 7.35 | 0.028 | 0.977 |
| ALT, U/L | 123.37 \pm 17.87 | 106.50 \pm 8.14 | 0.859 | 0.392 |
| ALB, U/L | 37.48 \pm 0.58 | 35.48 \pm 0.43 | 2.835 | 0.005 |
| PT, s | 12.34 \pm 0.66 | 12.09 \pm 0.12 | 0.405 | 0.686 |
| History of upper abdominal surgery | | | | |
| No | 67 | 84 | 0.42 | 0.516 |
| Yes | 3 | 6 | | |
| History of chronic disease | | | | |
| 1 | 57 | 77 | 0.492 | 0.482 |
| \geq 2 | 13 | 13 | | |
| Surgical approach | | | | |
| LPD | 53 | 65 | 2.4842 | 0.288 |
| OPD | 15 | 17 | | |
| LPD convert to OPD | 2 | 8 | | |
| Operation time(min) | 245.13 \pm 11.08 | 258.77 \pm 9.55 | -0.934 | 0.352 |
| Blood loss(ml) | 382.85 \pm 43.68 | 462.77 \pm 43.26 | -1.281 | 0.202 |
| Total hospital stay(days) | 28.21 \pm 1.42 | 38.35 \pm 2.15 | -3.92 | <0.001 |
| Pancreaticojejunal anastomosis | | | | |
| mucosa-to-mucosa | 46 | 65 | 0.784 | 0.375 |
| none mucosa-to-mucosa | 24 | 25 | | |
| Pathologic type | | | | |
| pancreatic head cancer | 16 | 18 | 8 | 0.091 |
| distal bile duct cancer | 23 | 38 | | |
| duodenal papilla cancer | 12 | 8 | | |
| duodenal ampulla cancer | 14 | 25 | | |
| invasive IPMN | 5 | 1 | | |
| Differentiation | | | | |
| Well/Moderate | 45 | 51 | 1.193 | 0.274 |
| Poor | 25 | 19 | | |

The p values of the statistical results of these factors were all less than 0.05, with significant statistical difference.



(33.33% vs 14.03%, $p=0.03$, Table 6). The efficiency of jaundice reduction in terms of lowering the TB and DB levels did not correlate with either the overall rate of complications or the overall rate of pancreatic fistula (both $p>0.05$, Table S3). However, the CAR on postoperative day 3 was significantly higher in the PBD group than in the control group (4.45 vs 3.56, $p=0.043$), with no significant between-group difference noted in other inflammatory indicators (all $p>0.05$, Table S4 and Figure 2B).

Survival analysis and predictive factors

The mean survival time was 52.24 ± 3.54 months for the control group and 43.61 ± 2.45 months for the PBD group (Table S5), with no significant between-group difference ($HR=0.67$, $p=0.104$, Figure 2C). According to the different histology, the patients were divided into two groups (pancreatobiliary type and intestinal adenocarcinoma type), K-M curves were drawn respectively. The results of subgroup analysis showed that in patients with pancreatobiliary type, the survival time of patients in PBD group was shorter ($HR=1.79$,

$p=0.046$, Figure 2D). However, the survival time of patients with intestinal adenocarcinoma type in PBD group did not change significantly ($HR=0.96$, $p=0.93$, Figure 2E). On univariate Cox regression analysis, tumor differentiation, histology, CA199, serious complications and pancreatic fistula were retained as independent risk factors of patient survival (all $p<0.05$). On multivariate Cox regression analysis, tumor differentiation and preoperative CA199 level were still retained as independent risk factors of patient survival (all $p<0.05$). PBD was not a risk factor for patient survival in both regression analysis ($p=0.094$, Table 7).

Discussion

Ampullary malignancies often lead to obstructive jaundice. Accumulation of DB, concomitant with other associated conditions of jaundice, such as biliary tract infection, abnormal liver function, and decreased nutritional status, increases the risk of perioperative complications and poor tumor prognosis (8, 9).

PD, considered as the primary surgical modality for the treatment of ampullary masses, plays a key role in the treatment

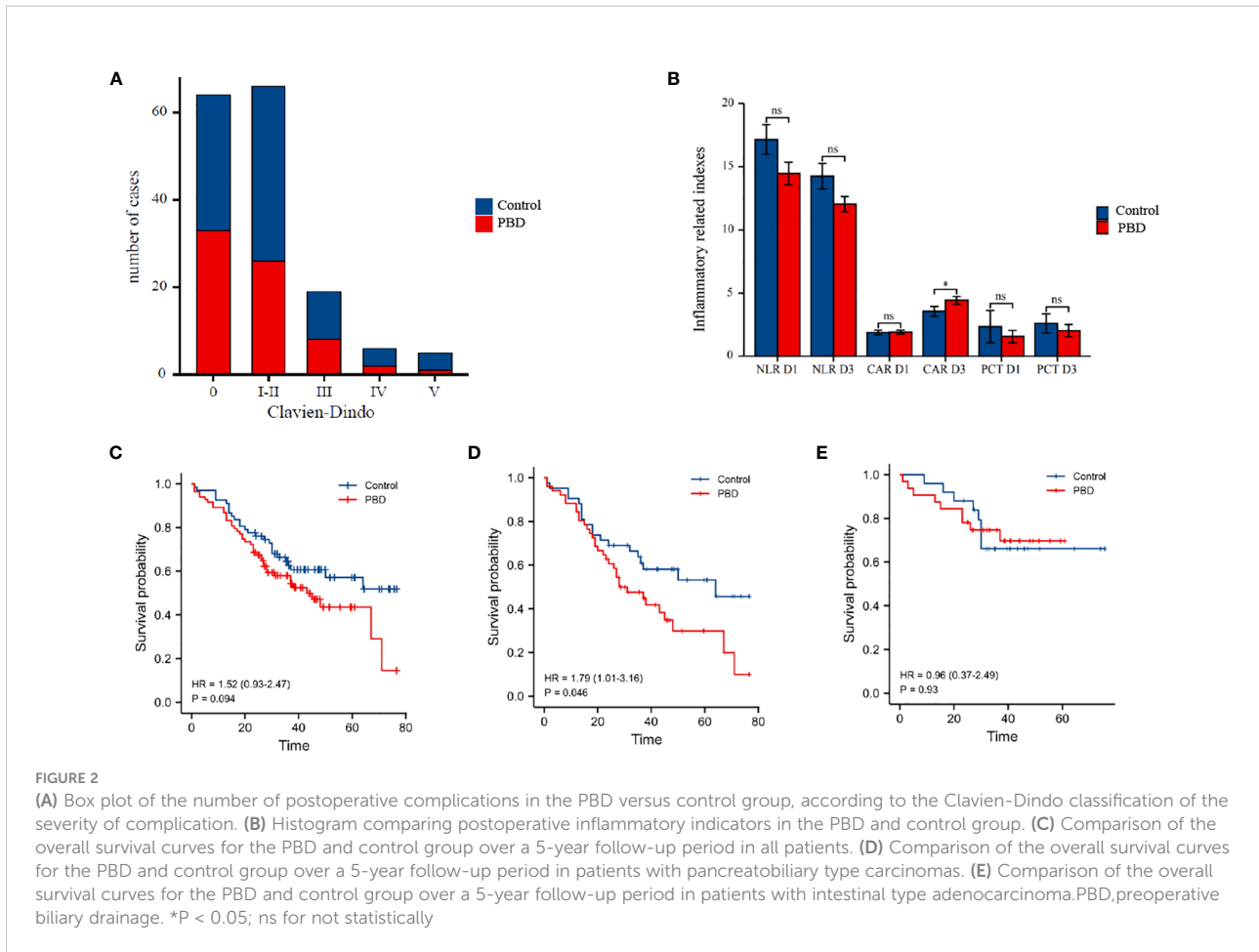


TABLE 2 Complications between PBD group and control group.

| | Control group (n = 70) | PBD group (n = 90) | Statistic | P value |
|-------------------------------------------|------------------------|--------------------|-----------|---------|
| Post-operative complication | | | | |
| No | 33 | 31 | 3.5277 | 0.473 |
| Clavien-Dindo I-II | 26 | 40 | | |
| Clavien-Dindo III | 8 | 11 | | |
| Clavien-Dindo IV | 2 | 4 | | |
| Clavien-Dindo V | 1 | 4 | | |
| Pancreatic fistula | | | | |
| No | 32 | 44 | 2.5109 | 0.473 |
| A | 25 | 27 | | |
| B | 10 | 10 | | |
| C | 3 | 9 | | |
| Intra-abdominal/gastrointestinal bleeding | | | | |
| No | 59 | 69 | 1.428 | 0.232 |
| Yes | 11 | 21 | | |
| Gastric emptying disorder | | | | |
| No | 60 | 74 | 0.3528 | 0.552 |

(Continued)

TABLE 2 Continued

| | Control group (n = 70) | PBD group (n = 90) | Statistic | P value |
|---------------------------|------------------------|--------------------|-----------|---------|
| Yes | 10 | 16 | | |
| Intra-abdominal infection | | | | |
| No | 59 | 77 | 0.0498 | 0.823 |
| Yes | 11 | 13 | | |

of resectable ampullary adenocarcinoma (10). Although PD has the disadvantages of wide resection, large trauma, and high difficulty for organ reconstruction, perioperative mortality and the rate of complications associated with PD have decreased in recent years. A clinical study of 28,888 patients, who were recruited across 700 hospitals participating in the American College of Surgeons National Surgical Quality Improvement Program from 2006 to 2019, reported a decrease in the rate of PD-related rate of major complications and mortality within the 30-day perioperative period from 2.5% in 2006 to 1.6% in 2019, although the overall rate of complications increased annually, reaching a rate of 22.76% in 2019 (11). Therefore, controlling

perioperative complications, in combination with early diagnosis and treatment of post-PD complications, is critical and should be addressed. In this regard, gaining insights into the risk factors of post-PD complications remains an important clinical task in the long run.

PBD for the treatment of obstructive jaundice was introduced by Whipple in 1935 (12) and was performed as a two-step procedure comprising gallbladder-stomach anastomosis to relieve cholestasis in the first step, followed by resection of the stage II tumor in the second step. With technical advances in the development of ERCP and PTC (13, 14), more biliary drainage methods have been emerging, with PBD

TABLE 3 Logistic regression analysis of risk factors of postoperative pancreatic fistula in all patients.

| | β | Wals | P value | OR | 95% C.I. | |
|-----------------------------|---------|-------|---------|-------|-------------|-------------|
| | | | | | lower limit | upper limit |
| Age | -0.02 | 0.433 | 0.511 | 0.98 | 0.923 | 1.041 |
| BMI | 0.209 | 3.654 | 0.056 | 1.232 | 0.995 | 1.526 |
| Histology | 1.051 | 2.114 | 0.146 | 2.861 | 0.694 | 11.796 |
| Differentiation | -0.07 | 0.01 | 0.921 | 0.932 | 0.232 | 3.741 |
| PBD | -0.816 | 1.585 | 0.208 | 0.442 | 0.124 | 1.575 |
| CA199 | 0 | 0.005 | 0.943 | 1 | 0.998 | 1.002 |
| Pancreas texture | -0.6 | 1.303 | 0.254 | 0.549 | 0.196 | 1.537 |
| Diameter of pancreatic duct | -0.516 | 6.161 | 0.013 | 0.597 | 0.397 | 0.897 |
| Operation time | -0.003 | 0.641 | 0.423 | 0.997 | 0.989 | 1.005 |

TABLE 4 Logistic regression analysis of risk factors of complications in all patients.

| | β | Wals | P value | OR | 95% C.I. | |
|-----------------------------|---------|-------|---------|-------|-------------|-------------|
| | | | | | lower limit | upper limit |
| Age | -0.015 | 0.357 | 0.55 | 0.976 | 0.926 | 1.029 |
| BMI | 0.003 | 0.002 | 0.964 | 0.968 | 0.822 | 1.139 |
| Histology | 1.028 | 3.92 | 0.048 | 2.171 | 0.725 | 6.505 |
| Differentiation | -0.307 | 0.367 | 0.545 | 0.747 | 0.237 | 2.354 |
| PBD | 0.186 | 0.139 | 0.709 | 1.77 | 0.62 | 5.052 |
| CA199 | 0.453 | 0.867 | 0.352 | 1 | 0.998 | 1.002 |
| Diameter of pancreatic duct | -0.209 | 3.325 | 0.068 | 0.841 | 0.667 | 1.06 |
| Preoperative level of TB | 0 | 0 | 0.996 | 1 | 0.993 | 1.007 |
| Operation time | 0.007 | 3.169 | 0.075 | 1.007 | 0.998 | 1.015 |

TABLE 5 Logistic regression analysis of risk factors of serious complications in all patients.

| | β | Wals | P value | OR | 95% C.I. | |
|-----------------------------|---------|-------|---------|-------|-------------|-------------|
| | | | | | lower limit | upper limit |
| Age | -0.019 | 0.273 | 0.601 | 0.982 | 0.916 | 1.052 |
| BMI | 0.016 | 0.018 | 0.894 | 1.016 | 0.806 | 1.281 |
| Histology | 0.473 | 0.39 | 0.533 | 1.605 | 0.363 | 7.084 |
| Differentiation | -0.16 | 0.039 | 0.844 | 0.852 | 0.173 | 4.205 |
| PBD | 0.638 | 0.747 | 0.388 | 1.892 | 0.445 | 8.038 |
| CA199 | 0.002 | 2.8 | 0.094 | 1.002 | 1 | 1.003 |
| Diameter of pancreatic duct | -0.067 | 0.228 | 0.633 | 0.935 | 0.711 | 1.23 |
| Preoperative level of TB | 0.002 | 0.158 | 0.691 | 1.002 | 0.993 | 1.01 |
| Operation time | 0.004 | 0.826 | 0.364 | 1.004 | 0.996 | 1.011 |

TABLE 6 Relationship between duration time of PBD and postoperative complications.

| | PBD \leq 7 days | PBD>7 days | statistic | p value | PBD<14 days | PBD \geq 14 days | statistic | p value |
|----------------------------------------|-------------------|------------|-----------|---------|-------------|--------------------|-----------|--------------|
| Post-operative complication | | | | | | | | |
| No | 21 | 10 | 0.024 | 0.87 | 25 | 6 | 6.102 | 0.013 |
| Yes | 39 | 20 | | | 32 | 27 | | |
| Serious complications | | | | | | | | |
| No | 46 | 25 | 0.533 | 0.46 | 49 | 22 | 4.673 | 0.03 |
| Yes | 14 | 5 | | | 8 | 11 | | |
| Postoperative pancreatic fistula(POFP) | | | | | | | | |
| No | 28 | 16 | 0.355 | 0.55 | 29 | 15 | 0.245 | 0.619 |
| Yes | 32 | 14 | | | 28 | 18 | | |
| Postoperative pancreatic fistula(POFP) | | | | | | | | |
| No | 55 | 26 | 0.556 | 0.45 | 51 | 30 | 0.047 | 0.826 |
| Yes | 5 | 4 | | | 6 | 3 | | |

Bold values is for the P < 0.05.

becoming a systemic treatment modality for patients with ampullary tumors (15). Since the publication of the results of the DROP trial in 2010 (16), the rate of PBD in patients with pancreaticobiliary tumors has decreased significantly, with focus placed on the optimal treatment strategy following jaundice reduction and treatment modalities for patients who are not suitable for early surgery. However, the results of the DROP trial do not fully discount the clinical significance of PBD. Moreover, the DROP trial itself has some limitations, which need to be acknowledged, such as including only patients with a TB level of 40–250 μmol and using a 7-Fr plastic stent under ERCP for jaundice reduction; these stents predispose the duct to occlusion, leading to a significant increase in the incidence of ERCP-related cholangitis and other complications. Unfortunately, the trial did not elaborate on surgery-related complications. In view of the above issues, the present study was intended to investigate the impacts of PBD on the incidence of PD-related complications and the prognosis.

Subgroup analysis identified that PBD led to a significant decrease in bilirubin and transaminase levels. Moreover,

increasing the duration of biliary drainage increased the efficiency of cholestasis relief. The following mechanisms likely contributed to the improvement in patients' perioperative condition with PBD. First, restoration of the bile level in the intestinal lumen allows bile salts to bind endotoxin, improving intestinal integrity and restoring the composition of the intestinal flora, thereby reducing the incidence of inflammation (17). Second, biliary drainage causes a cessation in the accumulation of hydrophobic bile acid in the liver, significantly reducing hepatocellular injury and improving hepatocellular function (18). Third, patients with malignant tumors combined with obstructive jaundice are in a hypercoagulable state (i.e., having an abnormal coagulation function); biliary drainage can improve the coagulation factor levels and the fibrinolytic process and can even correct this pathological state (19). Through these mechanisms, PBD may provide a strong pathophysiological benefit in patients with ampullary tumors and cholestasis.

The current first-line method for PBD is ERCP, which can produce some inflammatory irritation to the ampullary sphincter,

TABLE 7 Univariate-multivariate analysis of survival after PD.

| Characteristics | Total(N) | Univariate analysis | | Multivariate analysis | |
|--------------------------------|----------|-----------------------|------------------|-----------------------|--------------|
| | | Hazard ratio (95% CI) | P value | Hazard ratio (95% CI) | P value |
| Gender | 150 | | | | |
| Male | 88 | Reference | | | |
| Female | 62 | 1.100 (0.679-1.781) | 0.698 | | |
| Age | 150 | 1.014 (0.987-1.042) | 0.315 | | |
| Differentiation | 150 | | | | |
| Well/Moderate | 108 | Reference | | | |
| Poor | 42 | 3.323 (2.037-5.420) | <0.001 | 2.441 (1.318-4.521) | 0.005 |
| Histology | 150 | | | | |
| pancreatobiliary type | 93 | Reference | | | |
| intestinal adenocarcinoma type | 57 | 0.489 (0.282-0.846) | 0.011 | 0.596 (0.299-1.187) | 0.141 |
| Preoperative biliary drainage | 150 | | | | |
| No | 67 | Reference | | | |
| Yes | 83 | 1.517 (0.931-2.470) | 0.094 | 1.574 (0.906-2.736) | 0.107 |
| CA199 | 132 | 1.001 (1.001-1.002) | <0.001 | 1.001 (1.000-1.001) | 0.03 |
| Serious complications | 150 | | | | |
| No | 125 | Reference | | | |
| Yes | 25 | 1.821 (1.027-3.230) | 0.04 | 1.902 (0.917-3.945) | 0.084 |
| Pancreatic fistula | 150 | | | | |
| No | 71 | Reference | | | |
| Yes | 79 | 0.611 (0.378-0.986) | 0.044 | 0.598 (0.339-1.057) | 0.077 |

The meaning of the bold values is the p values of the statistical results of these factors were all less than 0.05, with significant statistical difference.

lower common bile duct, pancreatic head, and surrounding areas (20, 21). Inflammation can increase exudation and adhesions in these anatomical structures, which potentially increases the surgical risk (22, 23). Thus, although PBD can relieve cholestasis and improve liver function to repair hepatocytes, PBD may increase the risk of complications during PD surgery. Therefore, the impact of PBD on post-PD complications deserves more attention. In our study, although the rate of postoperative complications was slightly higher in the PBD group than in the control group, this difference was not significant. This finding likely reflects the decline in inflammatory status at the surgical site, ultimately after biliary drainage. Moreover, relief of cholestasis combine with nutritional support after PBD and the associated adjustment of the body's internal environment increase the efficiency of post-PD recovery (24).

The time interval from PBD to PD remains a key issue to address. A previous study has shown that when undergoing biliary drainage, 3–6 weeks are needed for the body to restore hepatocellular signaling, β -oxidation, and mitochondrial function (25). Therefore, it has been widely accepted that biliary drainage should be performed for 4–6 weeks prior to PD (26, 27). At our center, the average duration of PBD in patients with malignant biliary obstruction is 12 days. In this study, we compared outcomes based on a duration of PBD of <1 week or >2 weeks. While no significant difference was noted in the overall rate of post-PD complications between the PBD

group who underwent a drainage period of <1 week and the control group, the rate of post-PD complications and severe complications was significantly higher after a duration of biliary drainage of >2 weeks. It is possible that patients requiring prolonged biliary drainage may have more comorbidities, a worse nutritional status, and a worse physiological baseline and that a prolonged duration of biliary drainage may increase the systemic inflammatory response. The relative changes in the TB and DB levels after biliary drainage did not correlate with the rate of complications, probably because bilirubin indicators alone neither reflect the degree of cholestasis relief nor the degree of hepatocyte recovery.

This study has some limitations. The relatively small sample size of our study must also be acknowledged in this regard. More indicators of liver function and cholestasis, such as AST, ALT, ALB, GGT, and ALP, may be screened in future studies to identify a comprehensive indicator that can reflect the efficiency of biliary drainage.

Whether PBD affects the survival of patients is also an issue of high concern. While the excessive delay in surgical treatment can result in tumor progression, affecting survival, there is currently no consensus as to whether incomplete drainage may be beneficial, with absence of accepted guidelines for the optimal duration of PBD (28, 29). A high-quality multicenter randomized controlled trial reported a mean survival of 12.2 months after biliary endoscopic sphincterotomy compared with

the 12.7 months with PBD; this difference not being significant (30). The findings of our study were consistent with those of this trial, with a mean survival of 52 months for the control group and 43 months for the PBD group (Table 7); this difference not being significant. Although PBD did not provide survival benefits, it is not an inferior treatment option as short-term drainage can improve PD surgery and recovery by promoting the functional reserve and homeostasis of the liver without adversely affecting survival.

Conclusion

PBD neither affects the incidence of post-PD complications nor the survival in patients who have developed both ampullary malignancies and biliary obstruction. Prolonged biliary drainage (>2 weeks) may increase the overall rate of postoperative complications and severe complications. General surgery clinicians should perform PBD in a more selective, targeted, and individualized manner for such patients. Moreover, PD surgery should be performed only when both cholestasis and hepatocellular function can be improved, as to avoid an increased risk of surgery-related complications due to the prolonged duration of biliary drainage. The most appropriate comprehensive treatment strategy should be selected based on individual patient characteristics.

Data availability statement

The raw data supporting the conclusions of this article will be made available by the authors, without undue reservation.

Ethics statement

The studies involving human participants were reviewed and approved by ethics committee of Beijing Friendship Hospital, Capital Medical University (approval number: 2022-P2-104-01).

References

1. Allemani C, Matsuda T, Di Carlo V, Harewood R, Matz M, Nikšić M, et al. Global surveillance of trends in cancer survival 2000–14 (CONCORD-3): Analysis of individual records for 37 513 025 patients diagnosed with one of 18 cancers from 322 population-based registries in 71 countries. *Lancet* (2018) 391(10125):1023–75. doi: 10.1016/S0140-6736(17)33326-3
2. Siegel RL, Miller KD, Fuchs HE, Jemal A. Cancer statistics, 2021. *CA Cancer J Clin* (2021) 71(1):7–33. doi: 10.3322/caac.21654
3. Lai EC, Lau SH, Lau WY. The current status of preoperative biliary drainage for patients who receive pancreaticoduodenectomy for periampullary carcinoma: A comprehensive review. *Surgeon* (2014) 12(5):290–6. doi: 10.1016/j.surge.2014.02.004

This study complies with the Declaration of Helsinki, and all patients obtained informed consent before being included in this clinical study. Written informed consent for participation was not required for this study in accordance with the national legislation and the institutional requirements.

Author contributions

WG, HL and DW contributed to conception and design of the study. PL, CG and XZ organized the database. XY ZF and CX performed the statistical analysis. HL and DW wrote the first draft of the manuscript. YM and XG wrote sections of the manuscript. All authors contributed to the article and approved the submitted version.

Conflict of interest

The authors declare that the research was conducted in the absence of any commercial or financial relationships that could be construed as a potential conflict of interest.

Publisher's note

All claims expressed in this article are solely those of the authors and do not necessarily represent those of their affiliated organizations, or those of the publisher, the editors and the reviewers. Any product that may be evaluated in this article, or claim that may be made by its manufacturer, is not guaranteed or endorsed by the publisher.

Supplementary material

The Supplementary Material for this article can be found online at: <https://www.frontiersin.org/articles/10.3389/fonc.2022.1037671/full#supplementary-material>

4. Park JG, Jung GS, Yun JH, Yun BC, Lee SU, Han BH, et al. Percutaneous transluminal forceps biopsy in patients suspected of having malignant biliary obstruction: Factors influencing the outcomes of 271 patients. *Eur Radiol* (2017) 27(10):4291–7. doi: 10.1007/s00330-017-4796-x
5. Marsh Rde W, Alonzo M, Bajaj S, Baker M, Elton E, Farrell TA, et al. Comprehensive review of the diagnosis and treatment of biliary tract cancer 2012. part II: Multidisciplinary management. *J Surg Oncol* (2012) 106(3):339–45. doi: 10.1002/jso.23027
6. Gao Z, Wang J, Shen S, Bo X, Suo T, Ni X, et al. The impact of preoperative biliary drainage on postoperative outcomes in patients with malignant obstructive jaundice: A retrospective analysis of 290 consecutive cases at a

- single medical center. *World J Surg Oncol* (2022) 20(1):7. doi: 10.1186/s12957-021-02476-z
7. Dindo D, Demartines N, Clavien PA. Classification of surgical complications: A new proposal with evaluation in a cohort of 6336 patients and results of a survey. *Ann Surg* (2004) 240(2):205–13. doi: 10.1097/01.sla.0000133083.54934.ae
 8. Cui L, Yu H, Sun Q, Miao Y, Jiang K, Fang X. Effects of body mass index and serum albumin on overall survival in patients with cancer undergoing pancreaticoduodenectomy: A single-center retrospective cohort study. *World J Surg Oncol* (2022) 20(1):221. doi: 10.1186/s12957-022-02678-z
 9. Mackay TM, Dijksterhuis WPM, Latenstein AEJ, van der Geest LG, Sprangers MAG, van Eijck CHJ, et al. The impact of cancer treatment on quality of life in patients with pancreatic and periampullary cancer: A propensity score matched analysis. *HPB (Oxford)* (2022) 24(4):443–51. doi: 10.1016/j.hpb.2021.09.003
 10. de Wilde RF, Besselink MG, van der Tweel I, de Hingh IH, van Eijck CH, Dejong CH, et al. Impact of nationwide centralization of pancreaticoduodenectomy on hospital mortality. *Br J Surg* (2012) 99(3):404–10. doi: 10.1002/bjs.8664
 11. Sharon CE, Thaler AS, Straker 3rd Kelz RJ RR, Raper SE, Vollmer CM. Fourteen years of pancreatic surgery for malignancy among ACS-NSQIP centers: Trends in major morbidity and mortality. *Surgery* (2022) 172(2):708–14. doi: 10.1016/j.surg.2022.03.030
 12. Nehme F, Lee JH. Preoperative biliary drainage for pancreatic cancer. *Dig Endosc* (2022) 34(3):428–38. doi: 10.1111/den.14081
 13. El-Haddad HM, Sabry AA, Shehata GM. Endoscopic versus percutaneous biliary drainage for resectable pancreatic head cancer with hyperbilirubinemia and impact on pancreaticoduodenectomy: A randomized controlled study. *Int J Surg* (2021) 93:106043. doi: 10.1016/j.ijssu.2021.106043
 14. Lyu Y, Li T, Cheng Y, Wang B, Cao Y, Wang Y. Endoscopic ultrasound-guided vs ERCP-guided biliary drainage for malignant biliary obstruction: A up-to-date meta-analysis and systematic review. *Dig Liver Dis* (2021) 53(10):1247–53. doi: 10.1016/j.dld.2021.03.029
 15. Singh H, Siddiqui AA. Endosonographic workup and preoperative biliary drainage for pancreatic cancer. *Semin Oncol* (2015) 42(1):59–69. doi: 10.1053/j.seminoncol.2014.12.006
 16. van der Gaag NA, Rauws EA, van Eijck CH, Bruno MJ, van der Harst E, Kubben FJ, et al. Preoperative biliary drainage for cancer of the head of the pancreas. *N Engl J Med* (2010) 362(2):129–37. doi: 10.1056/NEJMoa0903230
 17. Clements WD, Parks R, Erwin P, Halliday MI, Barr J, Rowlands BJ, et al. Role of the gut in the pathophysiology of extrahepatic biliary obstruction. *Gut* (1996) 39(4):587–93. doi: 10.1136/gut.39.4.587
 18. Vendemiale G, Grattagliano I, Lupo L, Memeo V, Altomare E. Hepatic oxidative alterations in patients with extra-hepatic cholestasis. effect of surgical drainage. *J Hepatol* (2002) 37(5):601–5. doi: 10.1016/s0168-8278(02)00234-9
 19. Kloek JJ, Heger M, van der Gaag NA, Beuers U, van Gulik TM, Gouma DJ, et al. Effect of preoperative biliary drainage on coagulation and fibrinolysis in severe obstructive cholestasis. *J Clin Gastroenterol* (2010) 44(9):646–52. doi: 10.1097/MCG.0b013e3181ce5b36
 20. Ozgun YM, Colakoglu MK, Oter V, Piskin E, Aydin O, Aksoy E, et al. Biliary stenting prior to pancreaticoduodenectomy and its effects on postoperative outcome. twenty years of experience with 805 patients. *Arch Iran Med* (2021) 24(10):771–8. doi: 10.34172/aim.2021.114
 21. Park BK, Jeon TJ, Jayaraman V, Hammerle C, Gupta K, Jamil LH, et al. Endoscopic retrograde cholangiopancreatography in patients with previous pancreaticoduodenectomy: A single-center experience. *Dig Dis Sci* (2016) 61(1):293–302. doi: 10.1007/s10620-015-3861-z
 22. Asari S, Matsumoto I, Ajiki T, Shinzaki M, Goto T, Fukumoto T, et al. Perioperative management for pancreatoduodenectomy following severe acute pancreatitis in patients with periampullary cancer: Our experience with six consecutive cases. *Surg Today* (2015) 45(2):181–8. doi: 10.1007/s00595-014-0900-x
 23. Tsuchikawa T, Hirano S, Tanaka E, Kato K, Matsumoto J, Noji T, et al. Operative and perioperative management experience for hepatobiliary malignancies following ERCP-related pancreatitis. *Hepatogastroenterology* (2013) 60(126):1360–4.
 24. van der Gaag NA, de Castro SM, Rauws EA, Bruno MJ, van Eijck CH, Kuipers EJ, et al. Preoperative biliary drainage for periampullary tumors causing obstructive jaundice; DRainage vs. (direct) OPeration (DROP-trial). *BMC Surg* (2007) 7:3. doi: 10.1186/1471-2482-7-3
 25. Weston BR, Ross WA, Wolff RA, Evans D, Lee JE, Wang X, et al. Rate of bilirubin regression after stenting in malignant biliary obstruction for the initiation of chemotherapy: How soon should we repeat endoscopic retrograde cholangiopancreatography? *Cancer* (2008) 112(11):2417–23. doi: 10.1002/cncr.23454
 26. Costa Santos M, Cunha C, Velho S, Ferreira AO, Costa F, Ferreira R, et al. Preoperative biliary drainage in patients performing pancreaticoduodenectomy : guidelines and real-life practice. *Acta Gastroenterol Belg* (2019) 82(3):389–95.
 27. Shin SH, Han IW, Ryu Y, Kim N, Choi DW, Heo JS, et al. Optimal timing of pancreaticoduodenectomy following preoperative biliary drainage considering major morbidity and postoperative survival. *J Hepatobiliary Pancreat Sci* (2019) 26(10):449–58. doi: 10.1002/jhbp.652
 28. Bhatti ABH, Jafri RZ, Khan MK, Dar FS. Preoperative endoscopic biliary stenting before pancreaticoduodenectomy: Does timing matter? *Surg Innov* (2021) 28(5):567–72. doi: 10.1177/1553350620975887
 29. Yang F, Jin C, Zou C, Di Y, Hao S, Huang H, et al. Delaying surgery after preoperative biliary drainage does not increase surgical morbidity after pancreaticoduodenectomy. *Surgery* (2019) 166(6):1004–10. doi: 10.1016/j.surg.2019.07.012
 30. Eshuis WJ, van der Gaag NA, Rauws EA, van Eijck CH, Bruno MJ, Kuipers EJ, et al. Therapeutic delay and survival after surgery for cancer of the pancreatic head with or without preoperative biliary drainage. *Ann Surg* (2010) 252(5):840–9. doi: 10.1097/SLA.0b013e3181fd36a2