



# Corrigendum: Short-Interval Sequential CAR-T Cell Infusion May Enhance Prior CAR-T Cell Expansion to Augment Anti-Lymphoma Response in B-NHL

## OPEN ACCESS

### Edited and reviewed by:

Jonathan Bramson,  
McMaster University, Canada

### \*Correspondence:

Jing Pan  
panj@borenhospital.com

Xiaoli Chen  
cxlpumc@163.com

†These authors have contributed  
equally to this work

### Specialty section:

This article was submitted to  
Cancer Immunity  
and Immunotherapy,  
a section of the journal  
Frontiers in Oncology

Received: 16 September 2021

Accepted: 17 September 2021

Published: 01 October 2021

### Citation:

Meng Y, Deng B, Rong L, Li C,  
Song W, Ling Z, Xu J, Duan J, Wang Z,  
Chang AH, Feng X, Xiong X, Chen X  
and Pan J (2021) Corrigendum: Short-  
Interval Sequential CAR-T Cell Infusion  
May Enhance Prior CAR-T Cell  
Expansion to Augment Anti-  
Lymphoma Response in B-NHL.  
*Front. Oncol.* 11:778039.  
doi: 10.3389/fonc.2021.778039

Yuan Meng<sup>1†</sup>, Biping Deng<sup>2†</sup>, Luan Rong<sup>2</sup>, Chuo Li<sup>1</sup>, Weiliang Song<sup>3</sup>, Zhuojun Ling<sup>3</sup>,  
Jinlong Xu<sup>3</sup>, Jiajia Duan<sup>3</sup>, Zelin Wang<sup>3</sup>, Alex H. Chang<sup>4</sup>, Xiaoming Feng<sup>1</sup>, Xiujuan Xiong<sup>5</sup>,  
Xiaoli Chen<sup>6\*</sup> and Jing Pan<sup>1,7\*</sup>

<sup>1</sup> State Key Laboratory of Experimental Hematology, National Clinical Research Center for Blood Diseases, Institute of Hematology & Blood Diseases Hospital, Chinese Academy of Medical Sciences & Peking Union Medical College, Tianjin, China, <sup>2</sup> Cytology Laboratory, Beijing Boren Hospital, Beijing, China, <sup>3</sup> Department of Hematology, Beijing Boren Hospital, Beijing, China, <sup>4</sup> Clinical Translational Research Center, Tongji University School of Medicine, Shanghai, China, <sup>5</sup> Department of Pathology, Basic Medical College of Nanchang University, Nanchang, China, <sup>6</sup> Ganzhou Key Laboratory of Molecular Medicine, The Affiliated Ganzhou Hospital of Nanchang University, Ganzhou, China, <sup>7</sup> State Key Laboratory of Experimental Hematology, Boren Clinical Translational Center, Department of Hematology, Beijing Boren Hospital, Beijing, China

**Keywords:** B-NHL, CAR-T, CD19, CD22, CD20

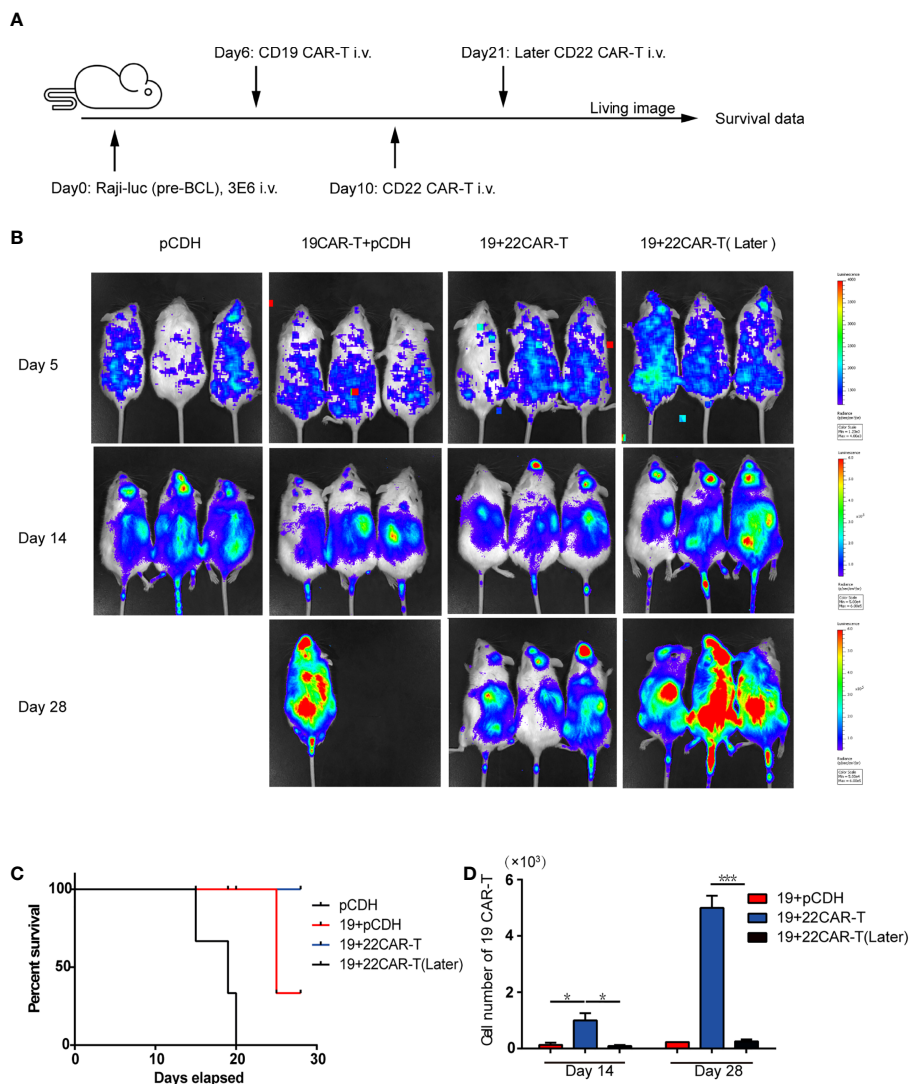
## A Corrigendum on

### Short-Interval Sequential CAR-T Cell Infusion May Enhance Prior CAR-T Cell Expansion to Augment Anti-Lymphoma Response in B-NHL

By Meng Y, Deng B, Rong L, Li C, Song W, Ling Z, Xu J, Duan J, Wang Z, Chang AH, Feng X, Xiong X, Chen X and Pan J (2021). *Front. Oncol.* 11:640166. doi: 10.3389/fonc.2021.640166

In the original article, there was a mistake in **Figure 2A** as published. In **Figure 2A (in vivo treatment scheme)**, the subsequent injection time was on Day 10, not on Day 14. The corrected **Figure 2** appears below.

In the original article, there was an error. In the *in vivo* treatment scheme, after prior CD19 CAR-T infusion, the mice were subsequently injected with  $1 \times 10^6$  sequential CD22 CAR-T cells or medium on Day 10 or Day 21, not on Day 14 or Day 21.



**FIGURE 2 |** Enhanced antitumor effects after sequential administration of CAR-T cells *in vivo*. **(A)** *In vivo* treatment scheme. **(B)** Tumor burden measured by bioluminescence. **(C)** The overall survival. **(D)** The number of the prior CD19 CAR-T cells was counted before and after secondary CAR-T infusion on days 14 and 28, respectively. \* $P < 0.05$ , \*\*\* $P < 0.001$  compared with the control group. Standard error means (SEM) are indicated as error bars.

A correction has been made to **Result, Enhanced Antitumor Effects After Sequential Administration of CAR-T Cells In Vivo, paragraph 1:**

“The mice were subsequently injected with  $1 \times 10^6$  sequential CD22 CAR-T cells or medium on Day 10 or Day 21 (Figure 2A).”

The authors apologize for these errors and state that this does not change the scientific conclusions of the article in any way. The original article has been updated.

**Publisher’s Note:** All claims expressed in this article are solely those of the authors and do not necessarily represent those of their affiliated organizations, or those of the publisher, the editors and the reviewers. Any product that may be evaluated in this article, or claim that may be made by its manufacturer, is not guaranteed or endorsed by the publisher.

Copyright © 2021 Meng, Deng, Rong, Li, Song, Ling, Xu, Duan, Wang, Chang, Feng, Xiong, Chen and Pan. This is an open-access article distributed under the terms of the Creative Commons Attribution License (CC BY). The use, distribution or reproduction in other forums is permitted, provided the original author(s) and the copyright owner(s) are credited and that the original publication in this journal is cited, in accordance with accepted academic practice. No use, distribution or reproduction is permitted which does not comply with these terms.