



# Corrigendum: A Weighted Gene Co-Expression Network Analysis–Derived Prognostic Model for Predicting Prognosis and Immune Infiltration in Gastric Cancer

Qingchuan Chen, Yuen Tan, Chao Zhang, Zhe Zhang, Siwei Pan, Wen An and Huimian Xu\*

## OPEN ACCESS

### Edited and reviewed by:

Longxiang Xie,  
Henan University, China

### \*Correspondence:

Huimian Xu  
xuhuimian@126.com

### Specialty section:

This article was submitted to  
Gastrointestinal Cancers,  
a section of the journal  
Frontiers in Oncology

**Received:** 20 March 2021

**Accepted:** 24 March 2021

**Published:** 14 April 2021

### Citation:

Chen Q, Tan Y, Zhang C, Zhang Z,  
Pan S, An W and Xu H (2021)  
Corrigendum: A Weighted Gene  
Co-Expression Network Analysis–  
Derived Prognostic Model for  
Predicting Prognosis and Immune  
Infiltration in Gastric Cancer.  
*Front. Oncol.* 11:683333.  
doi: 10.3389/fonc.2021.683333

Department of Surgical Oncology, The First Affiliated Hospital of China Medical University, Shenyang, China

**Keywords:** gastric cancer, weighted gene co-expression network analysis, Cox proportional hazards regression model, prognostic model, immune infiltration

## A Corrigendum on

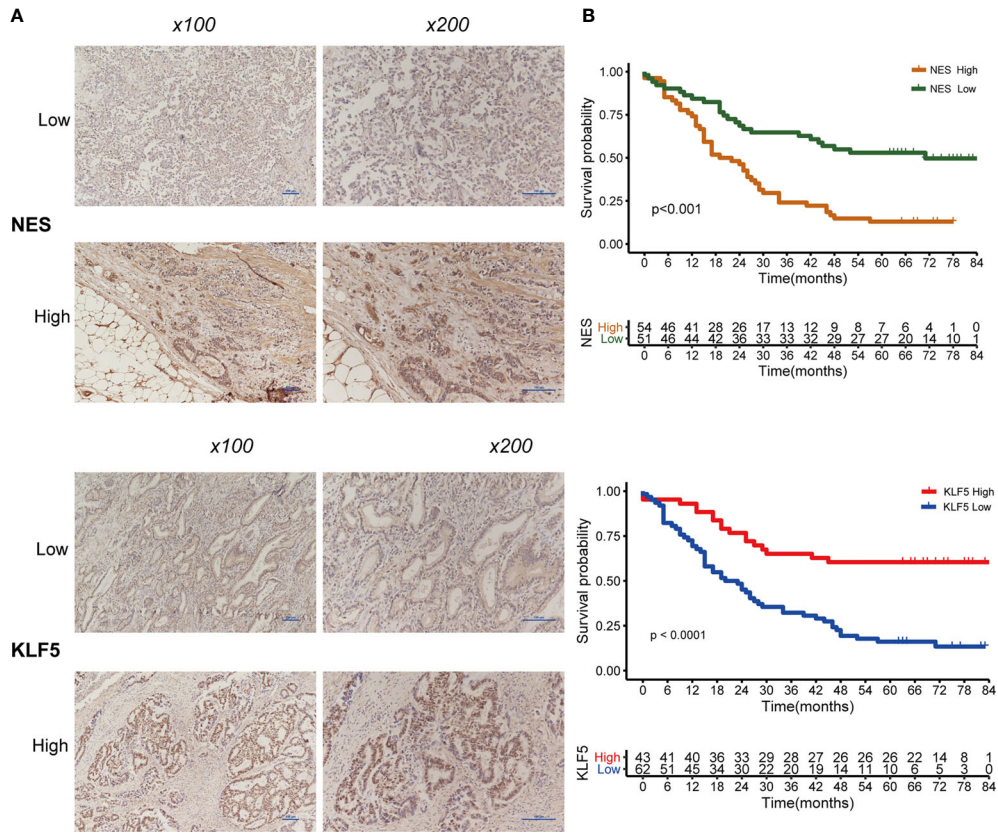
### A Weighted Gene Co-Expression Network Analysis–Derived Prognostic Model for Predicting Prognosis and Immune Infiltration in Gastric Cancer

By Chen Q, Tan Y, Zhang C, Zhang Z, Pan S, An W and Xu H (2021). *Front. Oncol.* 11:554779. doi: 10.3389/fonc.2021.554779

In the original article, there was a mistake in **Figure 9** as published. We made a mistake in the bottom picture of **Figure 9B** due to the disorder in organizing the pictures. The corrected **Figure 9** appears below.

The authors apologize for this error and state that this does not change the scientific conclusions of the article in any way. The original article has been updated.

Copyright © 2021 Chen, Tan, Zhang, Zhang, Pan, An and Xu. This is an open-access article distributed under the terms of the Creative Commons Attribution License (CC BY). The use, distribution or reproduction in other forums is permitted, provided the original author(s) and the copyright owner(s) are credited and that the original publication in this journal is cited, in accordance with accepted academic practice. No use, distribution or reproduction is permitted which does not comply with these terms.



**FIGURE 9** | Expression of NES and KLF5 in gastric cancer (GC) tissue and Kaplan-Meier analysis. **(A)** Low and high expression of NES and KLF5 in GC specimens; **(B)** Kaplan-Meier survival curves based on NES and KLF5.