



Real-World Efficacy and Safety of Anlotinib With and Without Immunotherapy in Advanced Non-Small Cell Lung Cancer

Qi Xiong^{1†}, Boyu Qin^{1†}, Lingli Xin², Bo Yang¹, Qi Song¹, Yu Wang¹, Sujie Zhang¹ and Yi Hu^{1*}

OPEN ACCESS

Edited by:

Antonio Calles,
Gregorio Marañón Hospital, Spain

Reviewed by:

Fyza Y. Shaikh,
Johns Hopkins University,
United States
Kai Li,
Tianjin Medical University Cancer
Institute and Hospital, China

*Correspondence:

Qi Xiong
xiongq301@163.com

Yi Hu
huyi301@301hospital.com.cn

[†]These authors have contributed
equally to this work

Specialty section:

This article was submitted to
Thoracic Oncology,
a section of the journal
Frontiers in Oncology

Received: 27 January 2021

Accepted: 14 July 2021

Published: 29 July 2021

Citation:

Xiong Q, Qin B, Xin L, Yang B, Song Q,
Wang Y, Zhang S and Hu Y (2021)
Real-World Efficacy and Safety of
Anlotinib With and Without
Immunotherapy in Advanced
Non-Small Cell Lung Cancer.
Front. Oncol. 11:659380.
doi: 10.3389/fonc.2021.659380

¹ Department of Oncology, General Hospital of Chinese PLA, Beijing, China, ² Department of Gynaecology and Obstetrics, People's Liberation Army (PLA) Rocket Force Characteristic Medical Center, Beijing, China

Aims: Combination of anti-angiogenesis therapy and immunotherapy has showed synergistic effects in non-small cell lung cancer (NSCLC). The aim of this retrospective study was to investigate the efficacy and safety of anlotinib with and without immunotherapy in NSCLC.

Methods: Pathologically confirmed NSCLC patients (stage IIIb-IV) receiving anlotinib between November 2018 and February 2020 were enrolled for retrospective analysis. The outcomes and safety of overall patients were evaluated, and the efficacies of anlotinib plus immunotherapy and anlotinib alone was compared. The primary endpoint was progression-free survival (PFS).

Results: A total of 80 patients (median age: 62 years, range: 29-86 years) were included. Overall median PFS was 4.3 months (95% confidence interval (CI): 2.7-5.9 months). In univariate analysis, patients without *EGFR* mutation, previous *EGFR* target therapy, and brain metastasis had significantly longer PFS. Cox regression analysis showed that only brain metastasis was an independent predictor of PFS. The median PFS of patients receiving anlotinib plus immunotherapy was slightly longer than that of patients receiving anlotinib alone (4.2 vs 3.1 months); however, the difference was not statistically significant. A tendency of longer median PFS was observed in patients with adenocarcinoma, *EGFR* wild type, stage IV, no liver metastasis, former smoker, ≥ 2 previous treatment lines, no previous VEGF or *EGFR* target therapies in anlotinib plus immunotherapy group. Treatments with anlotinib alone or anlotinib plus immunotherapy were well tolerable. The most common adverse events were fatigue, decreased hemoglobin count, hypertension, hand-foot syndrome, oral mucositis and hoarseness.

Conclusion: Anlotinib is well tolerable and effective in advanced NSCLC patients. Brain metastasis is an independent predictor of PFS in NSCLC patients receiving anlotinib. Future prospective studies with larger sample size and extended follow-up are needed

to confirm the clinical benefit in NSCLC patients treated with anlotinib combined with immunotherapy.

Keywords: anlotinib, immunotherapy, anti-programmed death-1/programmed death-ligand 1, non-small cell lung cancer, target therapy

INTRODUCTION

Lung cancer is the most commonly diagnosed cancer and the leading cause of cancer-related mortality worldwide (1, 2). About 80%–85% of patients have non-small cell lung cancers (NSCLC), and most have locally advanced or metastatic disease at diagnosis and therefore poor prognosis. Target therapy and immunotherapy have remarkably improved the overall survival (OS) and quality of life of these patients (3–7); however, for those who fail frontline treatment but remain in satisfactory physical condition, treatment options are limited. Novel effective drugs need to be identified.

Anlotinib is a tyrosine kinase inhibitor (TKI) targeting multiple tumor angiogenesis and proliferation signaling receptors, including receptor tyrosine kinases vascular endothelial growth factor receptor 1-3 (VEGFR 1-3), epidermal growth factor receptor (EGFR), fibroblast growth factor receptor 1-4 (FGFR 1-4), platelet-derived growth factor receptor α and β (PDGFR α and β), and stem cell factor receptor (c-Kit) (8–10). The phase III ALTER 0303 study demonstrated that patients with advanced NSCLC receiving anlotinib as third or further line treatment had significantly longer OS (median OS: 9.6 vs 6.3 months) and progression-free survival (PFS) (median PFS: 5.4 vs 1.4 months) than patients receiving placebo (11). Based on these findings, anlotinib was approved as third line therapy for advanced NSCLC patients after two lines of chemotherapy by the China National Medical Products Administration in 2018. In a real-world study, Wu et al. retrospectively analyzed the efficacy of anlotinib as salvage treatment in 81 NSCLC patients and reported similar results: the median PFS of NSCLC patients treated with anlotinib was 5 months, with patients with Eastern Cooperative Oncology Group performance status (ECOG PS) 0-1 and those without brain metastasis most likely achieve longer PFS (12). In another study of 52 NSCLC patients receiving anlotinib as third- or later-line treatment, Zhang et al. found median PFS and OS to be 4.5 months and 9 months, respectively, with relatively longer survival rates in patients with ECOG PS 0–1 and patients without liver metastasis (13). In contrast to these findings, Shao et al. reported median PFS of only 3.3 months in 58 advanced lung cancer patients (50 with NSCLC) who were treated with anlotinib as third or later-line treatment (14). These inconsistent results call for more detailed analysis of the real-world efficacy of anlotinib.

Previous studies have shown that combination of anti-angiogenesis therapy and other type of therapies had synergistic effects, and revealed prolonged PFS and OS in the first line and further line treatment (15–17). However, previous clinical trials failed to demonstrate a survival benefit with combination of anti-angiogenesis TKIs (such as nintedanib, sorafenib, and sunitinib) with chemotherapy in NSCLC (18–21). At the 20th World Conference on Lung Cancer (WCLC 2019), Han and colleagues reported the results of phase II clinical trials which showed that the

combination of anlotinib and chemotherapy or target therapy as first-line treatment for advanced NSCLC increased the objective response rate (ORR) and the disease control rate (DCR): ORR was 60% for chemotherapy plus anlotinib and 92.6% for erlotinib plus anlotinib, while DCR was 96.7% for chemotherapy plus anlotinib and 100% for erlotinib plus anlotinib (22, 23). In addition, in a phase I study, Han et al. reported ORR of 72.7%, DCR of 100%, and 12-month PFS rate of 71.4% with the combination of sintilimab with anlotinib as first-line treatment for NSCLC (24, 25). These evidences suggest that anlotinib combined with other therapies might be promising treatment for advanced NSCLC. Indeed, these therapeutic strategies have already been applied in clinical practice. Wang et al. showed that the median PFS and OS were 6.9 months and 14.5 months in 67 NSCLC patients treated with anlotinib plus anti-programmed death-1 (PD-1) antibody after previous systemic treatment (26). Thus, we performed a retrospective analysis of real-world data to investigate the efficacy of anlotinib used alone and in combination with other agents in advanced NSCLC, with special attention to the combination of anlotinib with immunotherapy.

PATIENTS AND METHODS

Patients and Treatments

Pathologically confirmed NSCLC patients (stage IIIB–IV according to AJCC 8th edition cancer staging system) receiving anlotinib in General Hospital of Chinese PLA between November 2018 and February 2020 were eligible for retrospective analysis. The inclusion criteria were as follows: advanced stage (IIIB–IV) NSCLC confirmed pathologically; with at least one measurable lesion; treated with anlotinib for the first time regardless of combined therapy and treatment lines; aged over 18 years old; ECOG PS score 0–2; radiotherapy allowed for stage III patients. The exclusion criteria were as follows: previous use of anlotinib; diagnosis with concomitant other cancers other than NSCLC; patients with hemoptysis (>50 ml/d) or deep vein thrombosis or pulmonary embolism; patients participated in clinical trials of other anti-tumor drugs within four weeks; severe dysfunction of heart, liver, kidney and (or) other complications that might detrimental for survival determined by investigators. The medical records of the patients were reviewed to collect data on sex, age, pathological type, stage, presence of liver/brain metastasis, ECOG PS, smoking history, previous treatments, and status of *EGFR*, *ROS1*, *ALK*, *HER2*, *TP53*, and *KRAS*.

Anlotinib was administered once daily (12mg or 10 mg or 8 mg) on days 1–14 of a 21-day cycle, or every other day. The starting dose of anlotinib was determined by the oncologist according to the patients' status. Immunotherapy was with anti-PD-1 or programmed death-ligand 1 (PD-L1) antibodies, and included pembrolizumab (2 mg/kg every 3 weeks),

nivolumab (3 mg/kg every 2 weeks), sintilimab (200 mg every 3 weeks), toripalimab (240 mg every 3 weeks), or atezolizumab (1200 mg every 3 weeks). Follow-up data were collected up to April 30th, 2020.

This study was approved by Ethics Committee of the General Hospital of Chinese PLA (Medical Ethics Committee of General Hospital of Chinese PLA No. S2018-092-01) and conducted according to the principles of the Declaration of Helsinki. The requirement for informed consent was waived in view of the retrospective nature of the study.

Outcomes and Safety Evaluation

Therapeutic effect was assessed using Response Evaluation Criteria in Solid Tumors (RECIST) version 1.1 by computed tomography (CT) scans every 2 cycles by two doctors independently and categorized as complete response (CR), partial response (PR), stable disease (SD), or progressive disease (PD). When there is disagreement on CT evaluation, a third doctor was requested to reevaluate. PFS was defined as the time from anlotinib initiation until disease progression or death of any cause before disease progression. OS was defined as the time from the beginning of anlotinib to death. Best response was used to calculate objective response rate (ORR) and disease control rate (DCR). Treatment-related adverse events were graded using Common Terminology Criteria for Adverse Events (CTCAE) version 5.0.

Statistical Analysis

The chi-square test and Fisher's exact test were used to compare the baseline characteristics and treatment response between two groups. Analysis of variance (ANOVA) was used to compare the difference among three or more groups. Survival curves for OS and PFS were analyzed using the Kaplan–Meier method. The log-rank test was used for univariate analysis between groups. Cox regression was used to analyze the statistically significant factors according to results of univariate analysis. Forest plots were used to depict the results of stratified analysis. Statistical analysis was performed by PRISM version 7.0 (GraphPad Software, La Jolla, CA, USA) and SPSS version 26.0 (IBM Corp., Armonk, NY, USA). $P < 0.05$ (two-sided) was defined as statistical significance.

RESULTS

Baseline Clinical Characteristics of Patients

A total of 80 patients were included in our study. There were 59 (73.7%) males and 21 (26.3%) females. The median age of the patients was 63 years (range, 29 to 86 years). While 12 of 80 (15%) patients staged IIIB/IIIC, 68 (85%) patients staged IV. Pathological types included adenocarcinoma (55/80, 68.7%) squamous cell carcinoma (22/80, 27.5%), and unknown type NSCLC (3/80, 3.8%). 13 (16.3%) patients had liver metastasis and 20 (25.0%) patients had brain metastasis. *EGFR* mutation was identified in 21/80 (26.3%) patients, *TP53* mutation in 13/80 (16.3%) patients, *KRAS* mutation in 5/80 (6.3%) patients, and *ALK* mutation in 2/80 (2.5%) patients. While 5 (6.2%) patients received anlotinib in first-line treatment, 25 (31.3%) received anlotinib in second-line treatment, and 50 (62.5%)

received anlotinib in third- or later-line treatment. Anlotinib was used alone in 24/80 (30.0%) patients and in combination with other therapies in 56/80 (70%) patients; among the latter, 30 patients received anlotinib plus immunotherapy, 9 received anlotinib plus TKIs target therapy, 11 received anlotinib plus chemotherapy, and 6 received anlotinib plus immunotherapy and chemotherapy. **Table 1** summarizes the characteristics of the patients.

Overall Efficacy of Treatment

Of the 80 patients, PR was achieved in 9/80 patients, SD in 49/80 patients, and PD in 22/80 patients. The overall ORR and DCR were 11.3% and 72.5%, respectively. The median follow-up duration was 6.1 months (range: 2.0–15.1 months). Treatment with anlotinib was still ongoing for 27 patients by the day of last follow-up. Overall median PFS was 4.3 months (95% confidence interval (CI): 2.7–5.9 months) (**Figure 1A**). Univariate analysis revealed that patients without *EGFR* mutation, previous *EGFR* target therapy and brain metastasis had statistically significant longer PFS (**Figures 2A–C** and **Table 1**). Age, sex, pathological type, *TP53* and *KRAS* status, stage, liver metastasis, smoking history, ECOG PS, and previous treatment lines or regimens were not associated with PFS (**Table 1**). In multivariate cox regression analysis, brain metastasis was the only factor independently associated with PFS (HR: 1.816, 95%CI: 1.003–3.286, $P = 0.049$) (**Table 2**). *EGFR* mutation and previous *EGFR* target therapy were not independent risk factors for PFS. The 1-year survival rate was 92.6% in this study. Since 76 (95%) patients were still alive at last follow-up, OS was not analyzed (**Figure 1B**).

Efficacy of Anlotinib Combined With Immunotherapy

To explore whether immunotherapy could improve the efficacy of anlotinib, we compared the efficacy of anlotinib plus immunotherapy (anti-PD-1 or PD-L1 antibodies) with anlotinib alone in NSCLC. There were 30 patients receiving anlotinib combined with immunotherapy, and 24 receiving anlotinib alone. Baseline characteristics were comparable between the two groups (**Table 3**).

Median PFS was longer for patients receiving anlotinib plus immunotherapy than for patients receiving anlotinib alone, although the difference was not statistically significant (4.2 months vs. 3.1 months; HR: 0.627, 95% CI: 0.312–1.260; $P = 0.19$) (**Figure 3**). The ORR (12.5% vs 10%) and DCR (70.8% vs 70%) were similar between anlotinib arm and anlotinib combined with immunotherapy arm (**Table 4**). Stratified analysis was performed to identify the subgroups most likely to benefit from the addition of immunotherapy to anlotinib therapy. Although no statistically significant differences were found, median PFS tended to be longer in patients with adenocarcinoma, *EGFR* wild type, stage IV, no liver metastasis, former smoker, ≥ 2 previous treatment lines, no previous VEGF or *EGFR* target therapies (**Table 5** and **Figures 4A–H**). **Figure 5** presents a forest plot of the stratified analysis.

Safety Analysis

Treatment-related adverse events occurred in 79 of the 80 patients. The five most common adverse events (all grades) were fatigue (62.5%), decreased hemoglobin count (42.5%), hypertension (41.5%), hand-foot syndrome (37.5%), and oral mucositis

TABLE 1 | Characteristics of patients and univariate analysis of factors associated with progression-free survival in the entire sample.

Characteristics	Patients (n= 80)	mPFS (95%CI)	P value	HR (95% CI)
Sex, n (%)			0.227	1.437 (0.791-2.611)
Male	59 (73.7)	5.1 (2.4-7.8)		
Female	21 (26.3)	3.3 (2.9-3.7)		
Age, n (%)			0.997	1.001 (0.571-1.753)
≤65	50 (62.5)	4.2 (2.1-6.3)		
>65	30 (37.5)	4.3 (1.7-6.9)		
Pathologic type, n (%)			0.363	0.907 (0.546-1.506)
Adenocarcinoma	55 (68.7)	3.0 (2.2-3.8)		
Squamous cell carcinoma	22 (27.5)	6.0 (4.4-7.6)		
Unknown	3 (3.8)	4.1 (0.0-9.4)		
EGFR status, n (%)			0.011*	0.478 (0.265-0.861)
Mutation	21 (26.3)	2.8 (2.2-3.4)		
Wildtype/Unknown	59 (73.7)	6.0 (3.5-8.5)		
TP53 status, n (%)			0.950	1.025 (0.480-2.188)
Mutation	13 (16.3)	4.6 (3.8-5.4)		
Wild type/Unknown	67 (83.7)	4.3 (2.2-6.4)		
KRAS status, n (%)			0.555	0.706 (0.218-2.281)
Mutation	5 (6.3)	2.7 (0.1-5.3)		
Wild type/Unknown	75 (93.7)	4.3 (2.5-6.1)		
Clinical stage, n (%)			0.143	1.863 (0.795-4.366)
IIIB/IIIC	12 (15.0)	7.8 (5.3-10.4)		
IV	68 (85.0)	3.3 (1.4-5.2)		
Liver metastases, n (%)			0.707	1.148 (0.557-2.363)
No	67 (83.7)	4.3 (2.5-6.1)		
Yes	13 (16.3)	3.0 (0.0-6.6)		
Brain metastases, n (%)			0.025*	1.924 (1.069-3.463)
No	60 (75.0)	5.1 (3.4-6.8)		
Yes	20 (25.0)	2.3 (1.2-3.4)		
Smoking history, n (%)			0.612	0.925 (0.681-1.257)
Never smoked	32 (40.0)	4.1 (2.1-6.1)		
Current smoker	19 (23.7)	3.3 (0.8-5.8)		
Former smoker	29 (36.3)	7.1 (2.8-11.4)		
ECOG PS, n (%)			0.434	1.372 (0.615-3.060)
≤1	70 (87.5)	4.6 (2.7-6.5)		
>1	10 (12.5)	1.9 (0.0-3.8)		
No. of previous treatment lines, n (%)			0.516	1.207 (0.680-2.144)
<2	30 (37.5)	5.4 (1.1-9.7)		
≥2	50 (62.5)	4.2 (2.1-6.3)		
Previous VEGF-target therapy, n (%)			0.298	1.331 (0.772-2.294)
No	45 (56.3)	5.4 (3.0-7.8)		
Yes	35 (43.7)	3.3 (1.4-5.2)		
Previous EGFR-target therapy, n (%)			0.040*	1.844 (1.013-.3.357)
No	61 (76.2)	5.4 (2.9-7.9)		
Yes	19 (23.8)	2.8 (1.8-3.8)		
Combination therapy, n (%)			0.784	0.971 (0.767-1.228)
No	24 (30.0)	2.8 (0.6-5.0)		
immunotherapy	30 (37.5)	4.1 (0.0-11.2)		
chemotherapy	11 (13.7)	5.4 (1.1-9.7)		
targeted therapy	9 (11.3)	3.1(1.1-5.1)		
immunotherapy and chemotherapy	6 (7.5)	4.2 (1.8-6.6)		

Data were present as n (%) unless specified.

CI, confidence interval; ECOG PS, indicates Eastern Cooperative Oncology Group Performance Status (score range: 0-5, with the highest score indicating death); EGFR, endothelial growth factor receptor; HR, hazard ratio; PFS, progression-free survival; VEGF, vascular endothelial growth factor.

The bold value with symbol * indicates statistically significant.

(33.75%). The five most common grade 3-5 adverse events were hypertension (13.7%), oral mucositis (8.75%), fatigue (6.25%), hand-foot syndrome (2.5%), liver dysfunction or increased AST (2.5%), hoarseness (1.25%), nausea (1.25%), decreased leukocyte count (1.25%) and hemoptysis (1.25%) (Table 6). Discontinuation of treatment due to adverse events was necessary in 6 patients (one patient each for hemoptysis, for grade 4 hypertension, for grade 3

fatigue, for alimentary tract hemorrhage, for grade 3 liver dysfunction, and for edema). There were no treatment-related deaths or life-threatening adverse events.

Among patients receiving anlotinib plus immunotherapy, similar to overall patients, the five most common adverse events were fatigue (70%), hypertension (50%), hand-foot syndrome (40%), decreased hemoglobin level (36.67%), and hoarseness (36.7%). Grade 3-5

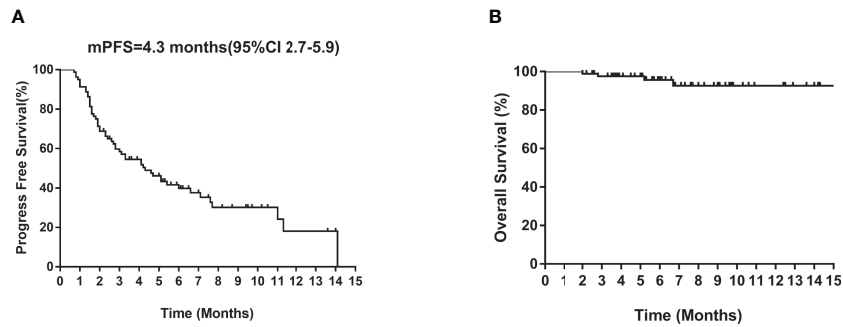


FIGURE 1 | Kaplan–Meier curves of median **(A)** PFS and **(B)** OS of all patients. CI, confidence interval; PFS, progression-free survival; OS, overall survival.

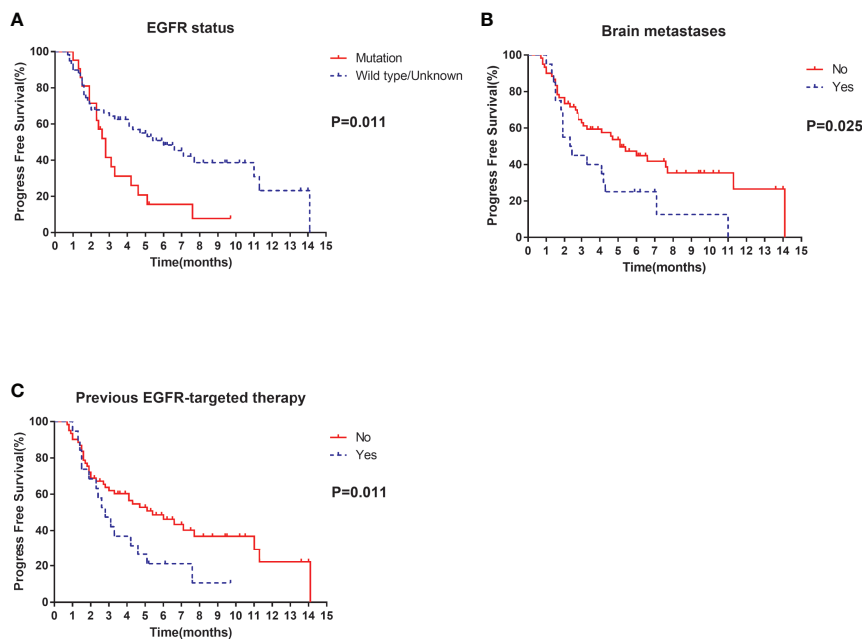


FIGURE 2 | Univariate analysis of PFS in all patients: **(A)** stratified by EGFR status; **(B)** stratified by brain metastases; **(C)** stratified by previous EGFR-targeted therapy.

TABLE 2 | Cox regression analysis of factors associated with progression-free survival in the entire sample.

Factor	p value	HR	HR95%CI	
			Lower	Upper
EGFR status	0.184	0.466	0.151	1.438
Brain metastases	0.049*	1.816	1.003	3.286
Previous EGFR-target therapy	0.880	0.916	0.293	2.865

CI, confidence interval; EGFR, endothelial growth factor receptor; HR, hazard ratio. The bold value with symbol * indicates statistically significant.

adverse events occurred in 14 patients. Among patients receiving anlotinib alone, the five most common adverse events were fatigue (54.17%), decreased hemoglobin level (54.17%), oral mucositis (45.83%), hypertension (37.5%), and hand-foot syndrome (37.5%).

Grade 3–5 adverse events occurred in 8 patients. Adverse events were similar in patients treated with anlotinib plus immunotherapy arm and patients treated with anlotinib alone. No additional adverse event was reported in anlotinib plus immunotherapy arm compared to anlotinib arm (**Table 6**).

DISCUSSION

The ALTER 0303 study and previous real-world studies showed that anlotinib alone could improve prognosis in NSCLC patients as third or later line treatment. Furthermore, the combination of anlotinib with immunotherapy, target therapy, or chemotherapy has been shown to have synergetic efficacy (22–24, 27). We retrospectively analyzed real-world data to determine the

TABLE 3 | Comparison of clinical characteristics of patients receiving anlotinib alone and those receiving anlotinib plus immunotherapy.

Characteristics	Anlotinib alone group (n=24)	Anlotinib plus immunotherapy group(n=30)	p value
Sex, n (%)			0.380
Male	20 (83.3)	22 (73.3)	
Female	4 (16.7)	8 (26.7)	
Age, n (%)			0.124
≤65	11 (45.8)	20 (66.7)	
>65	13 (54.2)	10 (33.3)	
Pathologic type, n (%)			
Adenocarcinoma	13 (54.2)	22 (73.3)	
Squamous cell carcinoma	11 (45.8)	6 (20.0)	
Unknown	0 (0)	2 (6.7)	
EGFR status, n (%)			0.713
Mutation	5 (20.83)	4 (13.3)	
Wild type/Unknown	19 (79.17)	26 (86.7)	
TP53 status, n (%)			0.309
Mutation	1 (4.2)	5 (16.7)	
Wild type/Unknown	23 (95.8)	25 (83.3)	
KRAS status, n (%)			1.000
Mutation	2 (8.3)	3 (10.0)	
Wild type/Unknown	22 (91.7)	27 (90.0)	
Clinical stage, n (%)			0.966
IIIB/IIIC	3 (12.5)	5 (16.7)	
IV	21 (87.5)	25 (83.3)	
Liver metastases, n (%)			0.678
No	18 (75.0)	25 (83.3)	
Yes	6 (25.0)	5 (16.7)	
Brain metastases, n (%)			0.066
No	23 (95.8)	22 (73.3)	
Yes	1 (4.2)	8 (26.7)	
Smoking history, n (%)			0.091
Never smoked	7 (29.2)	10 (33.3)	
Current smoker	5 (20.8)	13 (43.4)	
Former smoker	12 (50.00)	7 (23.3)	
ECOG PS, n (%)			0.257
≤1	19 (79.2)	28 (93.3)	
>1	5 (20.8)	2 (6.7)	
No. of previous treatment lines, n (%)			0.614
<2	8 (33.3)	12 (40.0)	
≥2	16 (66.7)	18 (60.0)	
Previous VEGF-target therapy, n (%)			0.061
No	18 (75.0)	15 (50.0)	
Yes	6 (25.0)	15 (50.0)	
Previous EGFR-target therapy, n (%)			0.713
No	19 (79.2)	26 (86.7)	
Yes	5 (20.8)	4 (13.3)	

efficacies of these therapeutic strategies in NSCLC, paying special attention to the combination of anlotinib plus immunotherapy.

During the course of cancer, about 40% NSCLC patients will finally develop brain metastases, which leads to poor prognosis (28). In this study, brain metastasis was identified as an independent prognostic factor in NSCLC patients treated with anlotinib. Subgroup *post hoc* analysis of ALTER0303 showed similar median PFS in NSCLC patients with and without brain metastases (4.17 vs 4.53 months, P=0.69) (29). Zhang et al. also reported brain metastases had no influence on PFS of NSCLC

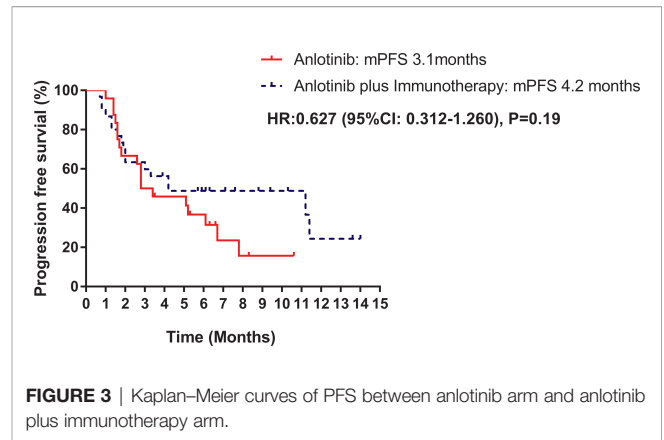


FIGURE 3 | Kaplan–Meier curves of PFS between anlotinib arm and anlotinib plus immunotherapy arm.

TABLE 4 | Response of anlotinib alone and anlotinib plus immunotherapy.

	Anlotinib alone group (n=24)	Anlotinib plus immunotherapy group (n=30)	p value
CR	0	0	
PR	3	3	
SD	14	18	
PD	7	9	
ORR (%)	3 (12.5%)	3 (10.0%)	1.000
DCR (%)	17 (70.8%)	21 (70.0%)	0.947

CR, complete response; DCR, disease control rate; ORR, objective response rate; PD, progressive disease; PR, partial response; SD, stable disease.

patients treated with anlotinib alone (13). However, in line with wu et al. (12), we found significantly longer median PFS in patients without brain metastases than in patients with brain metastases, whether treated with anlotinib alone or with anlotinib plus other therapies. The differences between ours and previous studies were likely due to differences in treatment regimens and sample sizes; the difference between *post hoc* analysis and retrospective analysis may also contribute.

In the present study, univariate analysis showed significantly longer PFS in patients without EGFR mutation than in patients with the mutation. However, consistent with previous studies (12, 13, 30), cox regression analysis showed both EGFR status and previous EGFR target therapy were not independent risk factors for PFS in patients receiving anlotinib. EGFR-TKIs are standard first-line treatment for NSCLC patients with EGFR mutations. Unfortunately, patients who show response invariably develop resistance after 8–12 months. The main acquired resistance mechanisms appear to be secondary mutations of EGFR (T790M), KRAS, PIK3CA and MET amplification. A recent study suggested that anlotinib could overcome acquired resistance to EGFR-TKI via inhibiting FGFR1 (31). A preclinical study showed that anlotinib could inhibit proliferation and induce apoptosis of KRAS mutation lung cancer cells through downregulating MEK and ERK. The study also revealed prolonged survival of KRAS mutation in lung cancer animal model (32). In addition, there is a previous report of an NSCLC patient harboring KRAS mutation who had PFS of 21 months after treatment with anlotinib (33). The mechanisms described above may partially explain why patients

TABLE 5 | Comparison of treatment efficacy between patients treated with anlotinib alone and patients treated with anlotinib plus immunotherapy.

Variable	Total patients (n=54)	mPFS (95%CI)		p value	HR (95% CI)
		Anlotinib alone group (n=24)	Anlotinib plus immunotherapy group (n=30)		
Sex, n (%)					
Male	42 (77.8)	2.8 (0.0-7.0)	4.1 (0.0-11.3)	0.400	0.715 (0.324-1.578)
Female	12 (22.2)	2.8 (0.000-6.3)	4.1(2.1-6.1)	0.302	0.487 (0.121-1.962)
Age, n (%)					
≤65	31 (57.4)	2.7 (1.5-3.9)	4.1 (0.0-10.7)	0.154	0.524 (0.211-1.300)
>65	23 (42.6)	5.1 (1.8-8.4)	–	0.534	0.709 (0.236-2.129)
Pathologic type, n (%)					
Adenocarcinoma	35 (64.8)	2.7 (1.7-3.7)	11.0 (0.0-23.6)	0.120	0.514 (0.217-1.216)
Squamous cell carcinoma	17 (31.5)	6.0 (4.226-7.8)	–	0.534	0.652 (0.166-2.563)
Unknown	2 (3.7)				
EGFR status, n (%)					
Mutation	9 (16.7)	2.8 (2.6-3.0)	1.3 (0.4-2.2)	0.101	5.477 (0.562-53.358)
Wild type/Unknown	45 (83.3)	5.1 (1.0-9.2)	11.0 (1.4-20.6)	0.219	0.616 (0.280-1.353)
TP53 status, n (%)					
Mutation	6 (11.1)	–	–	0.466	
Wild type/Unknown	48 (88.9)	2.8 (0.0-5.8)	4.1 (0.0-11.9)	0.263	0.666 (0.322-1.375)
KRAS status, n (%)					
Mutation	5 (9.3)	–	–	0.364	0.342 (0.030-3.851)
Wild type/Unknown	49 (90.7)	4.7 (2.5-6.9)	4.1(0.011.6)	0.311	0.693 (0.337-1.424)
Clinical stage, n (%)					
IIIB/IIIC	8 (14.8)	–	4.1 (0.0-8.6)	0.368	2.667 (0.268-26.499)
IV	46 (85.2)	2.8 (2.5-3.1)	11.0 (0.2-21.8)	0.099	0.543 (0.258-1.143)
Liver metastases, n (%)					
No	43 (79.6)	2.8 (0.0-6.7)	11.0 (1.7-20.3)	0.165	0.584 (0.269-1.267)
Yes	11 (20.4)	2.8 (0.0-7.2)	3.0 (0.9-5.1)	0.949	0.952 (0.212-4.279)
Brain metastases, n (%)					
No	45 (83.3)	4.7(2.5-6.9)	4.1 (0.0-10.8)	0.311	0.679 (0.317-1.455)
Yes	9 (16.7)	–	4.1 (0.0-9.1)	0.094	0.134 (0.008-2.140)
Smoking history, n (%)					
Never smoked	17 (31.5)	2.8 (2.3-3.3)	–	0.053	0.319 (0.092-1.107)
Current smoker	18 (33.3)	1.7 (1.5-1.9)	3.3 (0.8-5.8)	0.519	0.676 (0.200-2.291)
Former smoker	19 (35.2)	6.6 (0.0-15.0)	11.3 (0.0-25.8)	0.693	0.763 (0.197-2.957)
ECOG PS, n (%)					
≤1	47 (87.0)	5.1 (2.6-7.6)	4.1 (0.0-10.1)	0.289	0.674 (0.321-1.415)
>1	7 (13.0)	2.7 (0.1-5.3)	–	0.805	0.758 (0.083-6.904)
No. of previous treatment lines, n (%)					
<2	20 (37.0)	1.6 (0.0-7.7)	3.3 (0.2-6.4)	0.683	0.798 (0.267-2.384)
≥2	34 (63.0)	2.8 (0.3-5.3)	11.3 (0.9-21.7)	0.175	0.543 (0.221-1.336)
Previous VEGF-target therapy, n (%)					
No	33 (61.1)	4.7 (0.0-10.5)	11.0 (0.9-21.1)	0.352	0.647 (0.254-1.648)
Yes	21 (38.9)	2.8 (1.2-4.4)	4.1 (0.3-7.9)	0.196	0.511 (0.177-1.480)
Previous EGFR-target therapy, n (%)					
No	45 (83.3)	5.1 (1.1-9.1)	11.0 (1.6-20.4)	0.264	0.643 (0.293-1.412)
Yes	9 (16.7)	2.6 (0.2-5.0)	1.3 (0.4-2.2)	0.954	1.044 (0.245-4.451)

–, not involved in the multivariate analysis.

Data were present as n (%) unless specified.

CI, confidence interval; ECOG PS, indicates Eastern Cooperative Oncology Group Performance Status (score range: 0-5, with the highest score indicating death); EGFR, endothelial growth factor receptor; HR, hazard ratio; PFS, progression-free survival; VEGF, vascular endothelial growth factor.

with acquired resistance to EGFR-TKIs could benefit from anlotinib. Overall, our results and the evidence from earlier researches indicate that patients can benefit from anlotinib treatment, regardless of *EGFR* status and previous EGFR target therapy.

Immune checkpoint inhibitors targeting PD-1 or PD-L1 have remarkably improved survival in NSCLC patients. However, only about 20% NSCLC patients respond to anti-PD-1/PD-L1 antibody monotherapy. The combination of anti-angiogenesis agents and anti-PD-1/PD-L1 antibody has shown promising

benefits in solid tumors such as hepatic carcinoma, renal cancer, and NSCLC (34). Yang et al. reported that anlotinib and anti-PD-1/PD-L1 antibody acted synergistically to provide therapeutic benefit by promoting infiltration of natural killer cells, M1-like tumor-associated macrophages (TAM), and dendritic cells, while reducing the infiltration of M2-like TAM (35). Another study showed that anlotinib reduced PD-L1 expression on vascular endothelial cells *via* inactivation of AKT pathway, which then leads to increase in the CD8/FoxP3 ratio in the tumor immune microenvironment (36). It appears

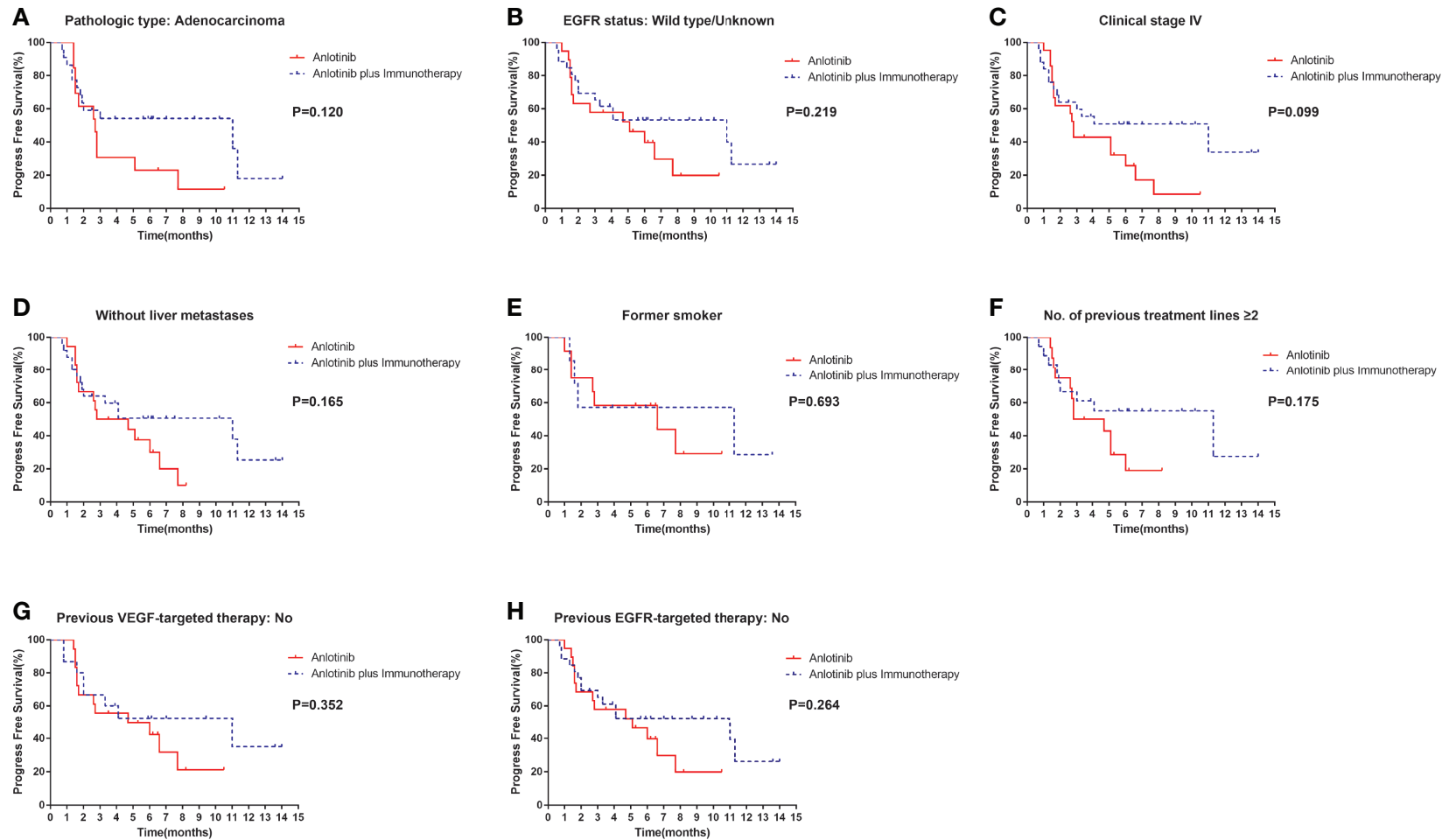


FIGURE 4 | Stratification analysis of PFS between patients in the anlotinib arm and anlotinib plus immunotherapy arm. **(A)** stratified by pathologic type: Adenocarcinoma; **(B)** stratified by *EGFR* status: Wild type/Unknown; **(C)** stratified by clinical stage IV; **(D)** stratified by without liver metastases; **(E)** stratified by former smoker; **(F)** stratified by No. of previous treatment lines ≥ 2 ; **(G)** stratified by previous VEGF-targeted therapy: No; **(H)** stratified by previous EGFR-targeted therapy: No.

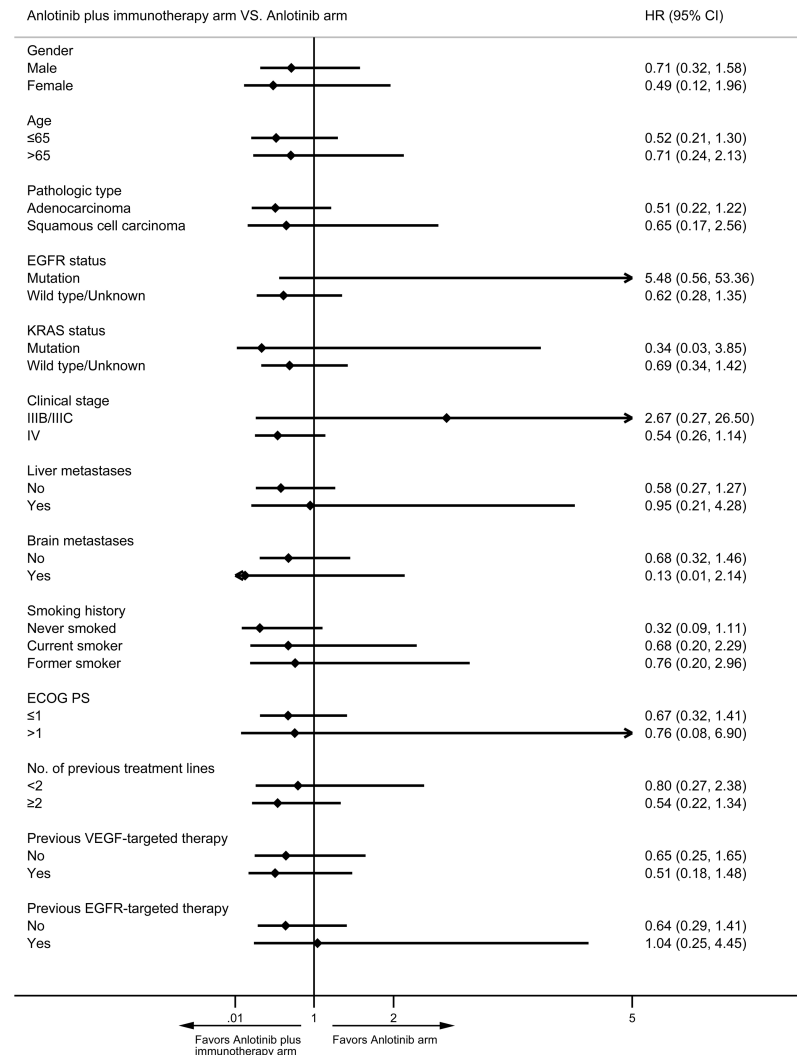


FIGURE 5 | Forest plot of stratification analysis of PFS between patients in anlotinib arm and anlotinib plus immunotherapy arm.

that anlotinib changes the immunosuppressive tumor microenvironment to an immune permissive status, and thus enhances efficacy of PD-1/PD-L1 antibody. However, in the present study, PFS was only slightly longer in patients receiving anlotinib plus anti-PD-1/PD-L1 group than in those receiving anlotinib alone, and no statistical difference was found. It is worth noting that the benefits of the combination of anlotinib and immunotherapy were most noticeable in patients with wild-type *EGFR*, without liver metastasis, without history of previous EGFR target therapy, and former smokers; however, the survival benefit was not statistically significant. Partially, we speculated this was because of the small sample size in our study. Previous studies showed that smoking, wild-type *EGFR*, and absence of liver metastasis predicted longer PFS and increased ORR in NSCLC patients treated with anti-PD-1/PD-L1 antibody (37–39), while acquired resistance to previous EGFR-TKI promoted immune escape (40). Furthermore, in

patients who respond to anti-PD-1/PD-L1 antibodies, anti-PD-1/PD-L1 antibodies seem to have durable antitumor efficacy (41). In our study, the failure to demonstrate significant prolongation of PFS and OS was probably due to the small sample size and the short follow-up.

In this study, treatment with anlotinib—either alone or in combination with other therapies—was generally well tolerated. Similar with previous clinical trial and real-world studies, the most common adverse were fatigue, hypertension, hand-foot syndrome and oral mucositis (11–14). In addition, we indicated that hoarseness was also frequently observed in our sample. Fatal bleeding has been reported in other anti-angiogenesis drugs, such as sunitinib, sorafenib and bevacizumab (42). In our study, only 2 patients with mild alimentary tract hemorrhage or hemoptysis were reported and the bleeding stopped after anlotinib was discontinued. No additional adverse event was seen in patients receiving anlotinib plus anti-PD-1/PD-L1

TABLE 6 | Adverse events in patients treated with anlotinib vs. patients treated with anlotinib plus immunotherapy.

Adverse event	All Patients (n=80)		Anlotinib (n=24)		Anlotinib plus Immunotherapy (n=30)	
	Any grade	≥3 grade	Any grade	≥3 grade	Any grade	≥3 grade
Fatigue	50 (62.5)	5 (6.3)	13 (54.2)	1 (4.2)	21 (70.0)	4 (13.3)
Decreased hemoglobin count	34 (42.5)	0 (0)	13 (54.2)	0 (0)	11 (36.7)	0 (0)
Hypertension	33 (41.3)	11 (13.7)	9 (37.5)	4 (16.7)	15 (50.0)	6 (20.0)
Hand-foot syndrome	30 (37.5)	2 (2.5)	9 (37.5)	1 (4.2)	12 (40.0)	0 (0)
Oral mucositis	27 (33.8)	7 (8.8)	11 (45.8)	2 (8.3)	10 (33.3)	4 (13.3)
Hoarseness	25 (31.3)	1 (1.3)	6 (25.)	0 (0)	11 (36.7)	1 (3.3)
Nausea	23 (28.8)	1 (1.3)	8 (33.3)	1 (4.2)	8 (26.7)	0 (0)
Rash	20 (25.0)	0 (0)	5 (20.8)	0 (0)	7 (23.3)	0 (0)
Liver dysfunction	18 (22.5)	2 (2.5)	2 (8.3)	0 (0)	9 (30.0)	2 (6.7)
Increased AST	17 (21.3)	2 (2.5)	2 (8.3)	0 (0)	9 (30.0)	2 (6.7)
Diarrhea	15 (18.8)	0 (0)	6 (25.0)	0 (0)	5 (16.7)	0 (0)
Dizziness	12 (15.0)	0 (0)	2 (8.3)	0 (0)	6 (20.0)	0 (0)
Increased ALT	11 (13.8)	0 (0)	0 (0)	0 (0)	6 (20.0)	0 (0)
Proteinuria	10 (12.5)	0 (0)	2 (8.3)	0 (0)	3 (10.0)	0 (0)
Decreased leukocyte count	10 (12.5)	1 (1.3)	1 (4.2)	0 (0)	3 (10.0)	0 (0)
Thrombocytopenia	8 (10.0)	0 (0)	1 (4.2)	0 (0)	3 (10.0)	0 (0)
Increased Scr	8 (10.0)	0 (0)	1 (4.2)	0 (0)	4 (13.3)	0 (0)
Hemoptysis	5 (6.3)	1 (1.3)	3 (12.5)	0 (0)	1 (3.3)	0 (0)
Alimentary tract hemorrhage	5 (6.3)	0 (0)	2 (8.3)	0 (0)	2 (6.7)	0 (0)
Hemorrhinia	2 (2.5)	0 (0)	0 (0)	0 (0)	1 (3.3)	0 (0)

AST, aspartate aminotransferase; ALT, alanine aminotransferase; Scr, serum creatinine.

antibodies. Thus, the combination of anlotinib with anti-PD-1/PD-L1 antibodies appears to be safe in NSCLC.

This study has some limitations. First, this was a retrospective analysis of data of a small sample from a single center, and so bias is inevitable and the sample size is not sufficient to obtain statistical difference. Thus, future study with larger sample size is needed. Second, PD-L1 expression is considered as the utmost predictive biomarker for NSCLC patients treated with anti-PD-1/PD-L1 agents (43–45), while the PD-L1 status was not obtained in this study. Third, the follow-up period was short; longer follow-up is necessary to evaluate the effect of anlotinib plus immunotherapy on OS.

In conclusion, anlotinib appears to be well-tolerated and effective in patients with NSCLC. Brain metastasis was found to be an independent predictor of PFS in NSCLC patients receiving anlotinib with or without other therapies. Addition of immunotherapy to anlotinib may prolong PFS in patients with adenocarcinoma, wild-type *EGFR*, stage IV disease, no liver metastasis, exsmoker status, two or more previous treatment lines, and no previous VEGF or EGFR target therapies. Further large prospective studies are needed to confirm our findings. Future studies should also attempt to identify predictive biomarkers that could help identify patients likely to benefit from the combination of anlotinib plus immunotherapy.

REFERENCES

- Bray F, Ferlay J, Soerjomataram I, Siegel RL, Torre LA, Jemal A. Global Cancer Statistics 2018: GLOBOCAN Estimates of Incidence and Mortality Worldwide for 36 Cancers in 185 Countries. *CA Cancer J Clin* (2018) 68:394–424. doi: 10.3322/caac.21492
- Chen W, Zheng R, Baade PD, Zhang S, Zeng H, Bray F, et al. Cancer Statistics in China, 2015. *CA Cancer J Clin* (2016) 66:115–32. doi: 10.3322/caac.21338

DATA AVAILABILITY STATEMENT

The original contributions presented in the study are included in the article/supplementary material. Further inquiries can be directed to the corresponding authors.

ETHICS STATEMENT

The studies involving human participants were reviewed and approved by Ethics Committee of the General Hospital of Chinese PLA (Medical Ethics Committee of General Hospital of Chinese PLA No. S2018-092-01). The ethics committee waived the requirement of written informed consent for participation.

AUTHOR CONTRIBUTIONS

Conception/design: YH, QX; Collection of assembly of data: BQ, BY, QS, YW, SZ; CT evaluation: QX, BQ, YH; Data analysis and interpretation: QX, BQ, LX; Manuscript writing: QX LX; Final approval of manuscript: All authors. All authors contributed to the article and approved the submitted version.

- Vokes EE, Ready N, Felip E, Horn L, Burgio MA, Antonia SJ, et al. Nivolumab Versus Docetaxel in Previously Treated Advanced Non-Small-Cell Lung Cancer (CheckMate 017 and CheckMate 057): 3-Year Update and Outcomes in Patients With Liver Metastases. *Ann Oncol* (2018) 29:959–65. doi: 10.1093/annonc/mdy041
- Fehrenbacher L, von Pawel J, Park K, Rittmeyer A, Gandara DR, Ponce Aix S, et al. Updated Efficacy Analysis Including Secondary Population Results for OAK: A Randomized Phase III Study of Atezolizumab Versus Docetaxel in

- Patients With Previously Treated Advanced Non-Small Cell Lung Cancer. *J Thorac Oncol* (2018) 13:1156–70. doi: 10.1016/j.jtho.2018.04.039
5. Paz-Ares L, Luft A, Vicente D, Tafreshi A, Gümüş M, Mazières J, et al. Pembrolizumab Plus Chemotherapy for Squamous Non-Small-Cell Lung Cancer. *N Engl J Med* (2018) 379:2040–51. doi: 10.1056/NEJMoa1810865
 6. Ramalingam SS, Yang JC, Lee CK, Kurata T, Kim DW, John T, et al. Osimertinib as First-Line Treatment of EGFR Mutation-Positive Advanced Non-Small-Cell Lung Cancer. *J Clin Oncol* (2018) 36:841–9. doi: 10.1200/JCO.2017.74.7576
 7. Peters S, Camidge DR, Shaw AT, Gadgeel S, Ahn JS, Kim DW, et al. Alectinib Versus Crizotinib in Untreated ALK-Positive Non-Small-Cell Lung Cancer. *N Engl J Med* (2017) 377:829–38. doi: 10.1056/NEJMoa1704795
 8. Sun Y, Niu W, Du F, Du C, Li S, Wang J, et al. Safety, Pharmacokinetics, and Antitumor Properties of Anlotinib, an Oral Multi-Target Tyrosine Kinase Inhibitor, in Patients With Advanced Refractory Solid Tumors. *J Hematol Oncol* (2016) 9:105. doi: 10.1186/s13045-016-0332-8
 9. Lin B, Song X, Yang D, Bai D, Yao Y, Lu N. Anlotinib Inhibits Angiogenesis Via Suppressing the Activation of VEGFR2, PDGFR β and FGFR1. *Gene* (2018) 654:77–86. doi: 10.1016/j.gene.2018.02.026
 10. Taurin S, Yang CH, Reyes M, Cho S, Coombs DM, Jarboe EA, et al. Endometrial Cancers Harboring Mutated Fibroblast Growth Factor Receptor 2 Protein Are Successfully Treated With a New Small Tyrosine Kinase Inhibitor in an Orthotopic Mouse Model. *Int J Gynecol Cancer* (2018) 28:152–60. doi: 10.1097/IGC.0000000000001129
 11. Han B, Li K, Wang Q, Zhang L, Shi J, Wang Z, et al. Effect of Anlotinib as a Third-Line or Further Treatment on Overall Survival of Patients With Advanced Non-Small Cell Lung Cancer: The ALTER 0303 Phase 3 Randomized Clinical Trial. *JAMA Oncol* (2018) 4:1569–75. doi: 10.1001/jamaoncol.2018.3039
 12. Wu D, Nie J, Dai L, Hu W, Zhang J, Chen X, et al. Salvage Treatment With Anlotinib for Advanced Non-Small Cell Lung Cancer. *Thorac Cancer* (2019) 10:1590–6. doi: 10.1111/1759-7714.13120
 13. Zhang K, Ma X, Gao H, Wang H, Qin H, Yang S, et al. Efficacy and Safety of Anlotinib in Advanced Non-Small Cell Lung Cancer: A Real-World Study. *Cancer Manag Res* (2020) 12:3409–17. doi: 10.2147/CMARS.246000
 14. Shao L, Wang W, Song Z, Zhang Y. The Efficacy and Safety of Anlotinib Treatment for Advanced Lung Cancer. *Onco Targets Ther* (2019) 12:6549–54. doi: 10.2147/OTT.S205674
 15. Reck M, von Pawel J, Zatloukal P, Ramlau R, Gorbounova V, Hirsh V, et al. Phase III Trial of Cisplatin Plus Gemcitabine With Either Placebo or Bevacizumab As First-Line Therapy for Nonsquamous Non-Small-Cell Lung Cancer: AVAIL (Vol 27, Pg 1227, 2009). *J Clin Oncol* (2009) 27:2415–5. doi: 10.1200/JCO.2007.14.5466
 16. Zhou C, Wu YL, Chen G, Liu X, Zhu Y, Lu S, et al. BEYOND: A Randomized, Double-Blind, Placebo-Controlled, Multicenter, Phase III Study of First-Line Carboplatin/Paclitaxel Plus Bevacizumab or Placebo in Chinese Patients With Advanced or Recurrent Nonsquamous Non-Small-Cell Lung Cancer. *J Clin Oncol* (2015) 33:2197–204. doi: 10.1200/JCO.2014.59.4424
 17. Garon EB, Ciuleanu TE, Arrieta O, Prabhaskar K, Syrigos KN, Goksel T, et al. Ramucirumab Plus Docetaxel Versus Placebo Plus Docetaxel for Second-Line Treatment of Stage IV Non-Small-Cell Lung Cancer After Disease Progression on Platinum-Based Therapy (REVEL): A Multicenter, Double-Blind, Randomised Phase 3 Trial. *Lancet* (2014) 384:665–73. doi: 10.1016/S0140-6736(14)60845-X
 18. Reck M, Kaiser R, Mellemegaard A, Douillard JY, Orlov S, Krzakowski M, et al. Docetaxel Plus Nintedanib Versus Docetaxel Plus Placebo in Patients With Previously Treated Non-Small-Cell Lung Cancer (LUME-Lung 1): A Phase 3, Double-Blind, Randomised Controlled Trial. *Lancet Oncol* (2014) 15:143–55. doi: 10.1016/S1470-2045(13)70586-2
 19. Hanna NH, Kaiser R, Sullivan RN, Aren OR, Ahn MJ, Tiangco B, et al. Nintedanib Plus Pemetrexed Versus Placebo Plus Pemetrexed in Patients With Relapsed or Refractory, Advanced Non-Small Cell Lung Cancer (LUME-Lung 2): A Randomized, Double-Blind, Phase III Trial. *Lung Cancer* (2016) 102:65–73. doi: 10.1016/j.lungcan.2016.10.011
 20. Paz-Ares L, Hirsh V, Zhang L, de Marinis F, Yang JC, Wakelee HA, et al. Monotherapy Administration of Sorafenib in Patients With Non-Small Cell Lung Cancer (MISSION) Trial: A Phase III, Multicenter, Placebo-Controlled Trial of Sorafenib in Patients With Relapsed or Refractory Predominantly Nonsquamous non-Small-Cell Lung Cancer After 2 or 3 Previous Treatment Regimens. *J Thorac Oncol* (2015) 10:1745–53. doi: 10.1097/JTO.0000000000000693
 21. Baggstrom MQ, Socinski MA, Wang XF, Gu L, Stinchcombe TE, Edelman MJ, et al. Maintenance Sunitinib Following Initial Platinum-Based Combination Chemotherapy in Advanced-Stage IIIB/IV Non-Small Cell Lung Cancer: A Randomized, Double-Blind, Placebo-Controlled Phase III Study—CALGB 30607 (Alliance). *J Thorac Oncol* (2017) 12:843–9. doi: 10.1016/j.jtho.2017.01.022
 22. Han B, Chu T, Zhang X, Zhong H, Zhang B, Wang H, et al. P1. 01-95 Efficacy and Safety of Anlotinib in Combination With Chemotherapy as First-Line Therapy in Advanced Non-Small Cell Lung Cancer (NSCLC) Patients. *J Thorac Oncol* (2019) 14:S398. doi: 10.1016/j.jtho.2019.08.810
 23. Han B, Chu T, Shi C, Zhong H, Zhang W, Zhang B, et al. P2. 01-21 Efficacy and Safety of Combining Anlotinib and Erlotinib as a First-Line Therapy in Patients With Advanced Non-Small Cell Lung Cancer (NSCLC). *J Thorac Oncol* (2019) 14:S646–7. doi: 10.1016/j.jtho.2019.08.1365
 24. Han B, Chu T, Zhong R, Zhong H, Zhang B, Zhang W, et al. P1. 04-02 Efficacy and Safety of Sintilimab With Anlotinib as First-Line Therapy for Advanced Non-Small Cell Lung Cancer (NSCLC). *J Thorac Oncol* (2019) 14:S439. doi: 10.1016/j.jtho.2019.08.905
 25. Chu T, Zhong R, Zhong H, Zhang B, Zhang W, Shi C, et al. Phase 1b Study of Sintilimab Plus Anlotinib as First-Line Therapy in Patients With Advanced NSCLC. *J Thorac Oncol* (2021) 16:643–52. doi: 10.1016/j.jtho.2020.11.026
 26. Wang P, Fang X, Yin T, Tian H, Yu J, Teng F. Efficacy and Safety of Anti-PD-1 Plus Anlotinib in Patients With Advanced Non-Small-Cell Lung Cancer After Previous Systemic Treatment Failure—A Retrospective Study. *Front Oncol* (2021) 11:628124. doi: 10.3389/fonc.2021.628124
 27. Wang HY, Chu JF, Zhao Y, Tang H, Wang LL, Zhou MQ, et al. A Trial of the Safety and Efficacy of Chemotherapy Plus Anlotinib vs Chemotherapy Alone as Second- or Third-Line Salvage Treatment for Advanced Non-Small Cell Lung Cancer. *Cancer Manag Res* (2020) 12:3827–34. doi: 10.2147/CMARS.249678
 28. Shin DY, Na II, Kim CH, Park S, Baek H, Yang SH. EGFR Mutation and Brain Metastasis in Pulmonary Adenocarcinomas. *J Thorac Oncol* (2014) 9:195–9. doi: 10.1097/JTO.0000000000000069
 29. Jiang S, Liang H, Liu Z, Zhao S, Liu J, Xie Z, et al. The Impact of Anlotinib on Brain Metastases of Non-Small Cell Lung Cancer: Post Hoc Analysis of a Phase III Randomized Control Trial (ALTER0303). *Oncologist* (2020) 25:e870–4. doi: 10.1634/theoncologist.2019-0838
 30. Wang L, He Z, Yang S, Tang H, Wu Y, Li S, et al. The Impact of Previous Therapy Strategy on the Efficiency of Anlotinib Hydrochloride as a Third-Line Treatment on Patients With Advanced Non-Small Cell Lung Cancer (NSCLC): A Subgroup Analysis of ALTER0303 Trial. *Transl Lung Cancer Res* (2019) 8:575–83. doi: 10.21037/tlcr.2019.09.21
 31. Lian Z, Du W, Zhang Y, Fu Y, Liu T, Wang A, et al. Anlotinib can Overcome Acquired Resistance to EGFR-TKIs Via FGFR1 Signaling in Non-Small Cell Lung Cancer Without Harboring EGFR T790M Mutation. *Thorac Cancer* (2020) 11:1934–43. doi: 10.1111/1759-7714.13485
 32. Hu H, Liu Y, Tan S, Xie XX, He J, Luo F, et al. Anlotinib Exerts Anti-Cancer Effects on KRAS-Mutated Lung Cancer Cell Through Suppressing the MEK/ERK Pathway. *Cancer Manag Res* (2020) 12:3579–87. doi: 10.2147/CMARS.243660
 33. Su Y, Meng Z, Xu X, Wang X, Zuo R, Hou Y, et al. A Case Report of Advanced Lung Adenocarcinoma Harboring KRAS Mutation Treated With Anlotinib. *Zhongguo Fei Ai Za Zhi* (2018) 21:428–30. doi: 10.3779/j.issn.1009-3419.2018.05.13
 34. Manegold C, Dingemans AC, Gray JE, Nakagawa K, Nicolson M, Peters S, et al. The Potential of Combined Immunotherapy and Antiangiogenesis for the Synergistic Treatment of Advanced NSCLC. *J Thorac Oncol* (2017) 12:194–207. doi: 10.1016/j.jtho.2016.10.003
 35. Yang Y, Li L, Jiang Z, Wang B, Pan Z. Anlotinib Optimizes Anti-Tumor Innate Immunity to Potentiate the Therapeutic Effect of PD-1 Blockade in Lung Cancer. *Cancer Immunol Immunother* (2020) 69(12):2523–32. doi: 10.1007/s00262-020-02641-5
 36. Liu S, Qin T, Liu Z, Wang J, Jia Y, Feng Y, et al. Anlotinib Alters Tumor Immune Microenvironment by Downregulating PD-L1 Expression on Vascular Endothelial Cells. *Cell Death Dis* (2020) 11:309. doi: 10.1038/s41419-020-2511-3
 37. Rizvi NA, Hellmann MD, Snyder A, Kvistborg P, Makarov V, Havel JJ, et al. Mutational Landscape Determines Sensitivity to PD-1 Blockade in Non-Small Cell Lung Cancer. *Science* (2015) 348:124–8. doi: 10.1126/science.aaa1348

38. Hellmann MD, Garon EB, Gandhi L, Hui R, Zhang J, Rangwala R, et al. Efficacy of Pembrolizumab in Key Subgroups of Patients With Advanced NSCLC. *J Thorac Oncol* (2015) 10:S261–406.
39. Tumeo PC, Hellmann MD, Hamid O, Tsai KK, Loo KL, Gubens MA, et al. Liver Metastasis and Treatment Outcome With Anti-PD-1 Monoclonal Antibody in Patients With Melanoma and NSCLC. *Cancer Immunol Res* (2017) 5:417–24. doi: 10.1158/2326-6066.CIR-16-0325
40. Peng S, Wang R, Zhang X, Ma Y, Zhong L, Li K, et al. EGFR-TKI Resistance Promotes Immune Escape in Lung Cancer Via Increased PD-L1 Expression. *Mol Cancer* (2019) 18:165. doi: 10.1186/s12943-019-1073-4
41. Topalian SL, Sznol M, McDermott DF, Kluger HM, Carvajal RD, Sharfman WH, et al. Survival, Durable Tumor Remission, and Long-Term Safety in Patients With Advanced Melanoma Receiving Nivolumab. *J Clin Oncol* (2014) 32:1020. doi: 10.1200/JCO.2013.53.0105
42. Piperdi B, Merla A, Perez-Soler R. Targeting Angiogenesis in Squamous Non-Small Cell Lung Cancer. *Drugs* (2014) 74:403–13. doi: 10.1007/s40265-014-0182-z
43. Mok TSK, Wu YL, Kudaba I, Kowalski DM, Cho BC, Turna HZ, et al. Pembrolizumab Versus Chemotherapy for Previously Untreated, PD-L1-Expressing, Locally Advanced or Metastatic Non-Small-Cell Lung Cancer (KEYNOTE-042): A Randomised, Open-Label, Controlled, Phase 3 Trial. *Lancet* (2019) 393:1819–30. doi: 10.1016/S0140-6736(18)32409-7
44. Li H, Xu Y, Wan B, Song Y, Zhan P, Hu Y, et al. The Clinicopathological and Prognostic Significance of PD-L1 Expression Assessed by Immunohistochemistry in Lung Cancer: A Meta-Analysis of 50 Studies With 11,383 Patients. *Transl Lung Cancer Res* (2019) 8:429–49. doi: 10.21037/tlcr.2019.08.04
45. Brahmer J, Reckamp KL, Baas P, Crinò L, Eberhardt WE, Poddubska E, et al. Nivolumab Versus Docetaxel in Advanced Squamous-Cell Non-Small-Cell Lung Cancer. *N Engl J Med* (2015) 373:123–35. doi: 10.1056/NEJMoa1504627

Conflict of Interest: The authors declare that the research was conducted in the absence of any commercial or financial relationships that could be construed as a potential conflict of interest.

Publisher's Note: All claims expressed in this article are solely those of the authors and do not necessarily represent those of their affiliated organizations, or those of the publisher, the editors and the reviewers. Any product that may be evaluated in this article, or claim that may be made by its manufacturer, is not guaranteed or endorsed by the publisher.

Copyright © 2021 Xiong, Qin, Xin, Yang, Song, Wang, Zhang and Hu. This is an open-access article distributed under the terms of the Creative Commons Attribution License (CC BY). The use, distribution or reproduction in other forums is permitted, provided the original author(s) and the copyright owner(s) are credited and that the original publication in this journal is cited, in accordance with accepted academic practice. No use, distribution or reproduction is permitted which does not comply with these terms.