



# The Biomarker Potential of Caveolin-1 in Penile Cancer

Andrej Panic<sup>1</sup>, Henning Reis<sup>2</sup>, Alina Wittka<sup>3</sup>, Christopher Darr<sup>1</sup>, Boris Hadaschik<sup>1</sup>, Verena Jendrossek<sup>3</sup> and Diana Klein<sup>3\*</sup>

<sup>1</sup> Department of Urology, West German Cancer Center, University of Duisburg-Essen, University Hospital Essen, Essen, Germany, <sup>2</sup> Institute of Pathology, West German Cancer Center, University of Duisburg-Essen, University Hospital Essen, Essen, Germany, <sup>3</sup> Institute of Cell Biology (Cancer Research), University of Duisburg-Essen, University Hospital, Essen, Germany

Various types of human cancers were characterized by an altered expression of epithelial or stromal caveolin-1 (CAV1). However, the clinical significance of CAV1 expression in penile cancer remains largely unknown. Here the expression patterns of CAV1 were analyzed in a retrospective cohort (n=43) of penile squamous cell carcinomas (SCC). Upon penile cancer progression, significantly increased CAV1-levels were determined within the malignant epithelium, whereas within the tumor stroma, namely the fibroblastic tumor compartment harboring activated and/or cancer associated fibroblasts, CAV1 levels significantly decline. Concerning the clinicopathological significance of CAV1 expression in penile cancer as well as respective epithelial-stromal CAV1 distributions, high expression within the tumor cells as well as low expression of CAV1 within the stromal compartment were correlated with decreased overall survival of penile cancer patients. Herein, CAV1 expressions and distributions at advanced penile cancer stages were independent of the immunohistochemically proven tumor protein p53 status. In contrast, less differentiated p16-positive tumor epithelia (indicative for human papilloma virus infection) were characterized by significantly decreased CAV1 levels. Conclusively, we provide further and new evidence that the characteristic shift in stromal-epithelial CAV1 being functionally relevant to tumor progression even occurs in penile SCC.

**Keywords:** caveolin-1, tumor stroma, penile cancer, microenvironment, biomarker, p16, p53

## OPEN ACCESS

### Edited by:

Triantafyllos Stylianopoulos,  
University of Cyprus, Cyprus

### Reviewed by:

Oliver Walther Hakenberg,  
University Hospital Rostock, Germany  
Alcides Chauz,  
Universidad del Norte, Paraguay

### \*Correspondence:

Diana Klein  
Diana.Klein@uk-essen.de  
orcid.org/0000-0002-1770-443X

### Specialty section:

This article was submitted to  
Cancer Molecular Targets  
and Therapeutics,  
a section of the journal  
Frontiers in Oncology

**Received:** 16 November 2020

**Accepted:** 12 March 2021

**Published:** 31 March 2021

### Citation:

Panic A, Reis H, Wittka A, Darr C,  
Hadaschik B, Jendrossek V and  
Klein D (2021) The Biomarker Potential  
of Caveolin-1 in Penile Cancer.  
*Front. Oncol.* 11:606122.  
doi: 10.3389/fonc.2021.606122

## INTRODUCTION

Penile cancer is a rare disease with an age-standardized incidence of 0.8 per 100,000 males (36,068 cases) and mortality of 0.3 (13,211 deaths) worldwide in 2020 (1, 2). Several risk factors for penile cancer have been identified, including phimosis, chronic penile inflammation (balanoposthitis related to phimosis), balanitis xerotica obliterans (lichen sclerosus), sporadic and UVA phototherapy for various dermatological conditions such as psoriasis, smoking, human papilloma virus infection (HPV) infection, rural areas, low socioeconomic status, multiple sexual partners, and early age of first intercourse (3–5). Especially HPV is an important risk factor; up to 50% of all cases of penile carcinoma are seen in presence of HPV infections (6–9). However, the impact of high-risk HPV in the prognosis of penile cancer remains unclear (10, 11). Among the different types of penile cancer, squamous cell carcinoma (SCC), accounts for > 95% of cases of penile malignancies that arise from the epithelium of the glans, the foreskin (prepuce) or the shaft (12–14). The different

histological SSC subtypes and the histological grades, together with other pathologically based factors, such as histological thickness, tumor site, size, as well as vascular or perineural invasion were used to identify pathological risk groups (15–18). The overall 5-year relative survival rates are >80% for localized disease states, but decreases <50% for patients with positive lymph node status (pN1–3) (19, 20). SSC histological subtypes and/or the tumor grade together with perineural and lymphatic invasion turned out to be important prognostic factors of penile cancer (5, 15, 21). However, the prognosis for patients with systemic metastasis remains poor. It is not uncommon for patient factors to delay diagnosis and initiation of treatment because the treatment is often associated with cosmetic and functional defects. As with many other cancers, the identification of prognostic factors, particularly biomarkers in penile cancer would create the opportunity to stratify patients according to risk of cancer progression and, therefore, impact on treatment decisions. To date, potential candidate biomarkers are still not rigorous enough to be routinely used in the diagnosis and management of penile malignancy (7, 21–24).

The membrane protein caveolin-1 (CAV1) gained attraction in carcinogenesis because it was shown to be overexpressed or mutated in numerous solid human tumors (25–28). As main structural component of specialized (flask-shaped) cholesterol and sphingolipids-enriched microdomains of the plasma membrane termed caveolae, CAV1 regulates multiple cell signaling pathways and thus regulating cancer-associated processes, ranging from cellular transformation, tumor growth and angiogenesis, invasion and metastasis, to multidrug resistance cells (29, 30). Upon tumor progression, CAV1 levels strongly increase in malignant epithelial cells, which was correlated with worse clinical outcomes in a couple of cancer entities, including prostate, pancreatic, and lung cancer (31–36). Concurrently, a loss of stromal CAV1, particularly affecting cancer associated fibroblasts (CAF), could be observed, which correlated with tumor progression, therapy resistance, and predicted adverse outcome, e.g. in breast and prostate cancer (25, 37–40). Therefore, CAV1 expression levels and especially stroma-epithelial distributions have strong indications to severe as a prognostic marker. However, nothing is known about the role of CAV1 in in penile tumorigenesis. The present study aimed to explore the clinicopathological significance and the respective biomarker potential of CAV1 expression levels, in both tumor cells and the stromal compartment that houses predominately the CAFs as well as vascular structures.

## MATERIALS AND METHODS

### Patients and Procedures

Patients were surgically treated between 2009 and 2018 at the Department of Urology, University Hospital Essen, University of Duisburg-Essen. Tissues from penile carcinomas were obtained during surgery according to local ethical regulations. Resected tissue specimens were processed for pathological diagnostic routine in agreement with institutional standards and

diagnoses were made based on current WHO criteria (22, 41–43). The study was performed according to the Declaration of Helsinki and was approved by the local ethics committee of the University Hospital Essen (Ethik-Kommission, Medizinische Fakultät der Universität Duisburg-Essen, ethical approval number: 20-9508-BO). Human tissue samples were analyzed anonymously. Overall survival (OS) was the primary endpoint of this retrospective study; 43 patients diagnosed with penile carcinoma were included. Patients were followed from the date of surgery until July 2020 with the reverse Kaplan-Meier estimate (44). Immunohistochemistry (IHC) and immunofluorescence staining was performed on formalin-fixed and paraffin-embedded (FFPE) tissue sections (4–5  $\mu\text{m}$ ). p53/TP53 (BP53-12; Zytomed Systems, Berlin, Germany) and p16<sup>INK4a</sup> (MSK123-05; Zytomed Systems) IHC staining were carried out on a Benchmark Ultra System (Ventana Medical Systems, Tucson, AZ, USA) with antibody visualization using the OptiView DAB IHC Detection Kit (Ventana Medical Systems) according to the manufacturer's instructions (45). Tumor specimens with strong and diffuse nuclear and cytoplasmic staining in more than 95–98% of tumor cells were considered as p16-positive. Evaluation of p53 immunoreactivity was carried out by assessing the percentage of positive tumor nuclei as previously described (46). CAV1 (N-20; sc-894; Santa Cruz Biotechnology, CA, USA) IHC was performed as previously described (39, 40, 47). In brief, samples were prepared by using a descending alcohol series and incubation with citrate buffer, pH 6.1 as target retrieval solution. Afterwards slides were blocked with a 2% fetal calf serum in phosphate buffered saline (blocking solution) to reduce unspecific interactions and primary antibody was incubated overnight at 4°C. CAV1 was detected by a horseradish-peroxidase conjugated secondary antibody and DAB-staining. Nuclei were counterstained with hematoxylin. Combined quantitative and qualitative evaluation of CAV1-immunoreactivity was performed blinded to clinical/follow-up data using a CAV1 immunoreactivity score for low (0–0.5), moderate (>0.5–1.5), and high (>1.5–2) CAV1 expression levels either estimated for the immunoreactivity of tumor cells or of the stromal (fibroblastic) compartment. The immunoreactivity score takes into account both the percentage of positive cells and staining intensity (48, 49). The proportion (and the intensity of immunoreactivity) of stained cells was scored as follows: 0–0.5, no staining or  $\leq 10\%$  stained cells (weak staining); <0.5–1.5, 11–50% stained cells (moderate staining), and 3, 51–100% (usually >80%) stained cells (strong staining). Data analysis was performed with Prism 8 software (GraphPad, La Jolla, CA, USA). Statistical significance was set at the level of  $p \leq 0.05$  (\* $p \leq 0.05$ , \*\* $p \leq 0.01$ , \*\*\* $p \leq 0.005$ , \*\*\*\*,  $p \leq 0.001$ ). Differences in survival between the groups were determined with the log rank test. Cox regression was performed to assess hazard ratios (HR). Mean values of clinicopathological parameters and immunohistochemical results were calculated and used for analysis of standard error (SEM). Statistical significance was evaluated by 1-way ANOVA followed by multiple comparisons post-tests as indicated in the respective figure legend.

## RESULTS

### Epithelial-Stromal CAV1 Distributions of CAV1 in Penile Carcinoma

The clinicopathologic characteristics of the 43 penile carcinoma patients who have been surgically treated in our clinic and were retrospectively analyzed are listed in **Table 1**. CAV1 immunostaining was performed in order to investigate CAV1 expression levels as well as epithelial-stromal CAV1 distributions in penile carcinoma specimen according to the p16 (as a surrogate marker for the HPV infection) and p53 (TP53) status (**Figure 1**). CAV1 was expressed in all cancerous penile tissue in variable amounts, predominantly localized in the cell membrane and cytoplasm. In p16-positive tumors that generally displayed a less differentiated phenotype, CAV1 expression was not present or rather low in malignant epithelial cells (**Figure 1** #1-3, arrowheads). Even within the tumor stroma, CAV1 expression was hardly detectable and predominately restricted to the vascular compartment (**Figure 1**, #1-3, asterisks). Only

two tumors of the p16-positive group (n=17) showed a stronger epithelial CAV1 immunoreactivity, and two (other) tumors showed an increased CAV1 immunoreactivity within the stromal compartment (not shown). Among the p16-negative tumors (n=26), tumors with low, moderate and high scores of CAV1 expressions within the tumor cells could be observed. As compared to the p16-positive tumors, CAV1 levels within the malignant epithelium were increased (**Figure 1**, #4-6 arrows). The CAV1 immunoreactivity within the stromal compartment seemed to be negatively regulated: with increasing epithelial CAV1 expressions, decreasing CAV1 expression levels within the stroma were observed (**Figure 1**, #4-6 asterisks). Furthermore, CAV1 expression levels within penile carcinoma turned out to be p53 independent, as the characteristic epithelial-tumoral CAV1 shift observed in p16-negative tumors did not correlate to the amount of p53 of respective specimen (**Figure 1**).

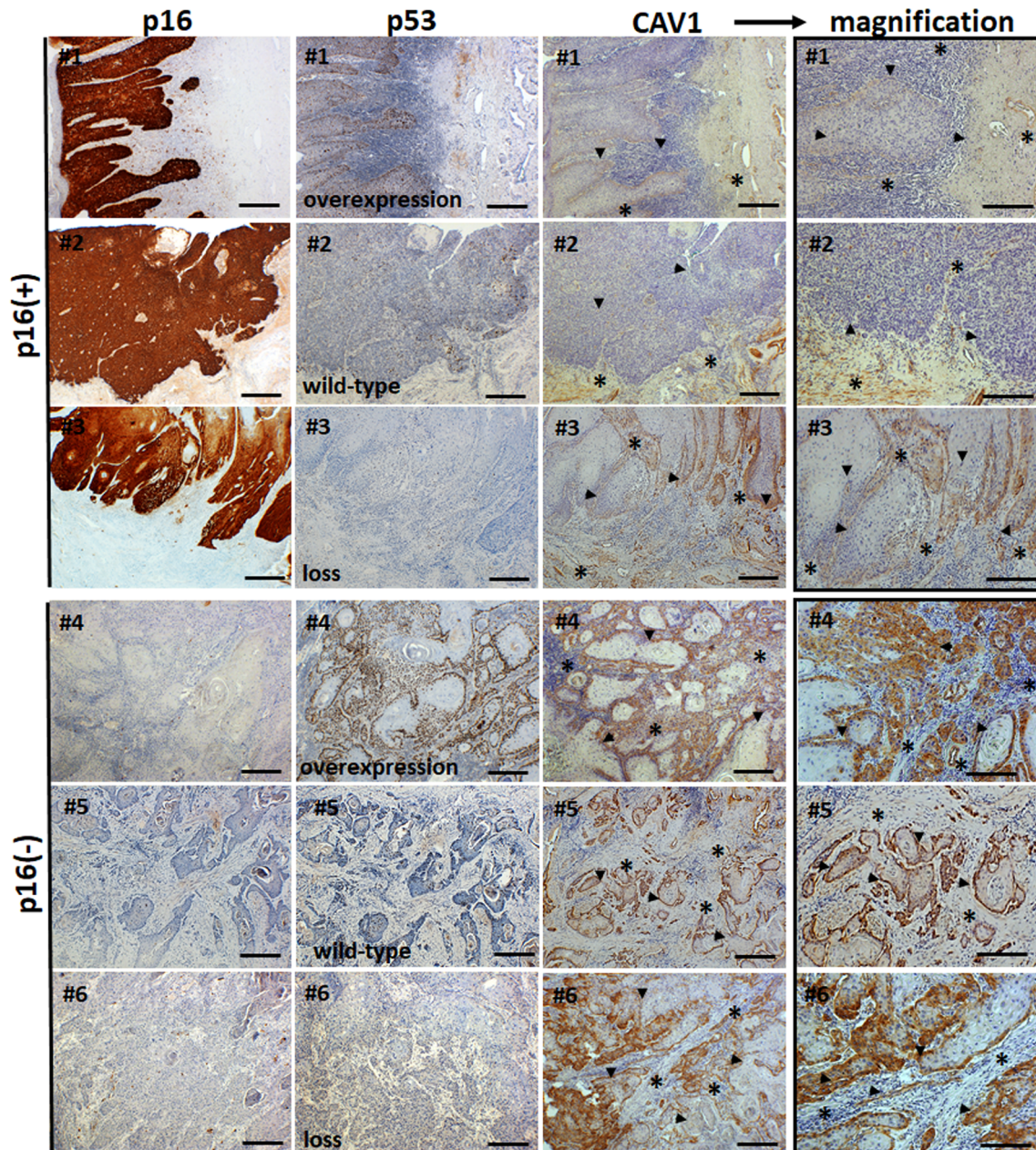
### Clinical Significances of Epithelial-Stromal CAV1 Expression Levels

To investigate the effect of epithelial-stromal CAV1 levels in correlation with p16 and p53 status on malignant progression, the correlation between CAV1 protein expression and the clinicopathologic features were examined respectively (**Figure 2**). First of all, a significant difference concerning the overall survival (OS) could be estimated for p16-positive and non-p16-related subtypes of penile SCC, with a reduced OS of patients with p16-positive penile tumors (**Figure 2A**). p53 expression levels did not correlate with the p16 status, although there was a trend of p16-negative tumors being associated with p53 overexpression (**Figure 2B**). p16-positive tumors generally tended to have a less differentiated phenotype of malignant epithelial cells (**Figure 1** #1, #2), but there was no significant difference between the p16 status and the tumor grade (G1-G3; **Figure 2C**). The tumor grade was found to correlate with the patient age (at the time of surgery), whereas the overall survival time did not correlate with the patient age (**Figure 2D**). Of note, a significant lower CAV1 content in malignant epithelial cells as determined by significant lower CAV1 scores was present in p16 expressing penile tumors (**Figure 2E**). Moreover, CAV1 expression levels within the tumor epithelium seem to correlate with OS: with increasing CAV1 scores of the tumor epithelium the OS deteriorated (**Figure 2F**), an effect that was even more prominent when only the p16-negative tumors (n=27) were investigated (**Figure 2G**), most likely due to the fact that p16-positive tumors were shown to express less epithelial CAV1 (**Figure 2E**). A strong tumor epithelial CAV1 immunoreactivity as shown by the high CAV1 scores correlated with low CAV1 contents within the tumor stroma (**Figure 2H**). Of note, tumoral CAV1 expression levels did not correlate with the p53 status (**Figure 3A**), although loss of p53 was associated with a better OS (**Figure 3B**). The disadvantageous effect of a stromal CAV loss could be further emphasized by the fact that stromal CAV1 expressions in relation to OS revealed a better OS of respective patients with tumors harboring high stromal CAV1 levels (**Figure 3C**), particularly when considering p16-negative tumors only (**Figure 3D**). Although epithelial CAV1 levels were rather low in p16-

**TABLE 1** | Baseline patient demographics and histopathology (n = 43). 29 patients underwent partial amputation surgery (local excision and destruction of diseased tissue) or total penis amputation (14). The smoking status was unknown.

Characteristics	Sub-characteristics	Value (n %)
Age (range)		62,9 +/- 12,7 (39-90)
Stage (pT)	pT1	21 (48.8%)
	pT2	16 (37.2%)
	pT3	6 (14%)
Lymph node metastasis (pN)	pN0	4 (9.3%)
	pN1-N2/3	5 (11.6%)
	pNX	34 (79.1)
Distant metastasis (M)	M0	1 (2.3%)
	M1	1 (2.3%)
	MX	41 (95.3%)
Histologic grade	G1	8 (18.6%)
	G2	23 (53.5%)
	G3	9 (20.9%)
	GX	3 (7%)
Chemotherapy	Paclitaxel+Cis-/	12 (27.9)
	Carboplatin	2 (4.7%)
p16 status (IHC)	negative	26 (60.5%)
	positive	17 (39.5%)
p53 status (IHC)	loss	7 (16.3%)
	wild-type	26 (60.5%)
	overexpression	10 (32.3%)
CAV1 scores (epithelium)	low (0-0.5)	17 (39.5%)
	moderate (>0.5-1.5)	15 (34.9%)
	high (>1.5-2)	11 (25.6%)
CAV1 scores (stroma)	low (0-0.5)	12 (27.9%)
	moderate (>0.5-1.5)	13 (30.2%)
	high (>1.5-2)	18 (41.9%)
Overall Survival, days (range)	death	670 +/- 754 (40-3179)
	alive (until July 2020)	+/- 978 (523-3693)



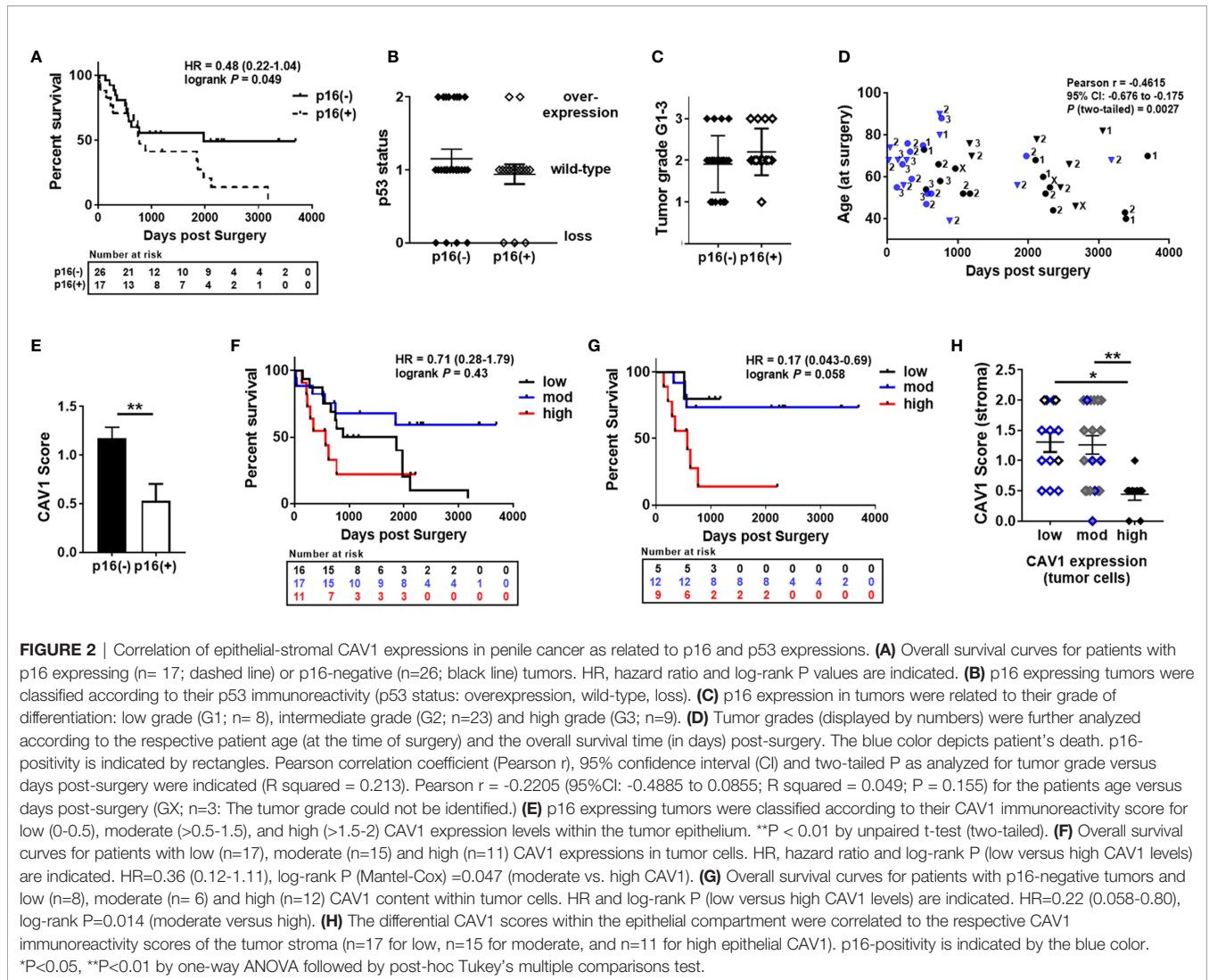


**FIGURE 1** | Immunohistological analysis of CAV1 levels and epithelial-stromal CAV1 distributions in correlation with p16 and p53 levels in human penile tumor tissues. Paraffin-sections of human penile carcinomas were stained for p16, p53 and CAV1 in combination with DAB (brown). Representative images of p16-positive [p16(+)] and p16-negative [p16(-)] tumor specimen are shown. The p53 status (overexpression, wild-type and loss) is indicated. Asterisks (\*) mark stromal compartments and bold arrows point to epithelial structures. Sections were counterstained using hematoxylin. # indicates different patients. Scale bar: 200  $\mu$ m, scale bar of higher magnification images (CAV1): 75  $\mu$ m.

expressing tumors, and thus in tumors with lower differentiation pattern, the impression had solidified that CAV1 was more expressed in malignant epithelial cells that bear a more undifferentiated phenotype at least in p16-negative tumors (Figure 4). Indeed, CAV1 expression in p16-negative tumors was predominately localized in less differentiated tumor cells

with increasing epithelial CAV1 expression levels according to increasing tumor grades and thus decreasing differentiation patterns of the tumor cells (Figure 4A). Even within the same (p16-negative) tumor specimen, CAV1 immunoreactivity in epithelial cells was strongly increased in tumor cells with a less differentiated phenotype (Figure 4B). In contrast, CAV1



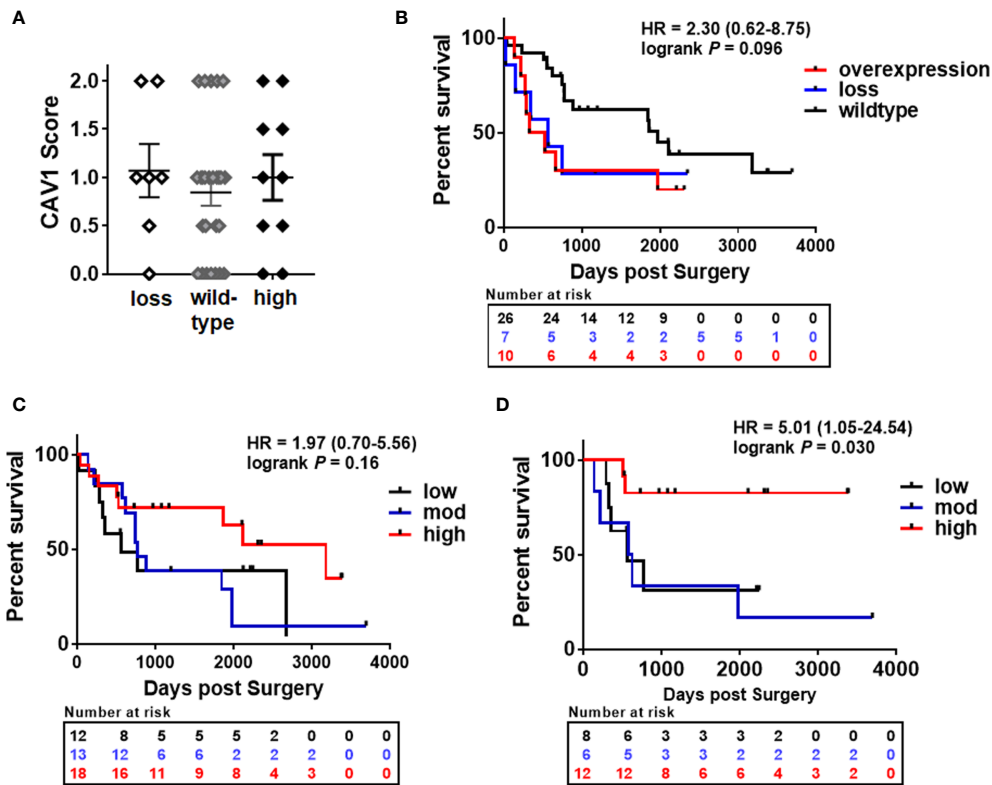


expression within the tumor stroma was decreasing with upon tumor progression (Figures 4 and 5). As expected, with increasing tumor grades and stages, the OS of penile cancer patients deteriorated (Figures 5A, F). Similarly, increasing CAV1 levels in tumor epithelial cells were accompanied by with decreasing CAV1 levels within the tumor stroma as related to increasing tumor grades (Figures 5B, C), an effect that was significant when considering p16-negative tumors only (Figures 5D, E). A loss of stromal CAV1, when epithelial CAV levels seem to increase, was further confirmed at advanced tumor stages (Figures 5G, H).

## DISCUSSION

Current research efforts in penile cancer, like for many other cancers, concentrate on the identification and functional characterization of biomarkers with the potential to be modulated as valuable target for cancer therapy (7, 50–52).

Patients with penile tumors that are characterized aggressive pathological features (e.g. increasing tumor grades) are associated with the highest risk for locoregional metastasis (53, 54). The occurrence of lymph node recurrence worsens tumor-specific survival levels, and patients with systemic metastasis can only expect an extremely poor prognosis (22, 55). Thus, the most important prognostic factor for survival of penile cancer patients is the complete and thorough assessment of (regional) lymph nodes spreading and penetration upon tumor progression (56). Therefore, molecular factors, particularly biomarkers were urgently needed in penile carcinogenesis that could be of relevance for therapeutic interventions in terms of targeted (therapeutic) agents for the use as first and especially as second-line treatment for patients with refractory disease (53). Here we showed now that (human) penile cancer specimen with increasing tumor grades and stages exhibited increased epithelial CAV1 levels, whereas in parallel a reduction of CAV1 in the tumor stroma (especially CAFs) was detected; and a loss of stromal CAV1 is well known to correlate with a more reactive



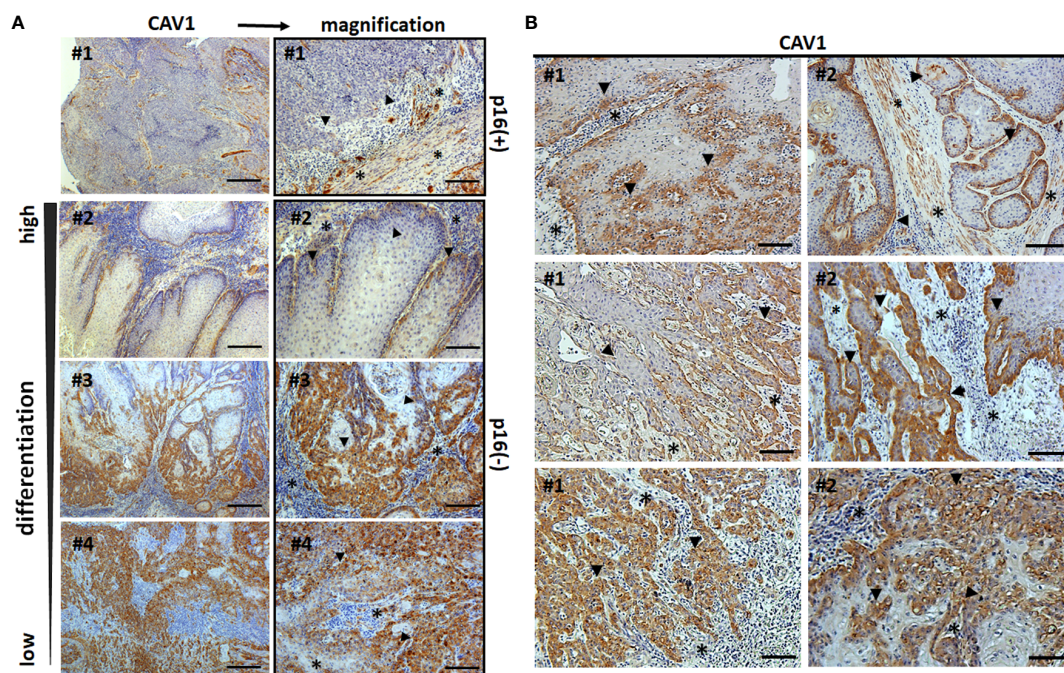
**FIGURE 3** | Overall survival as related to p53 expressions and according to the expression of stromal CAV1 in penile cancer. **(A)** Differential p53 expression levels were classified according to their CAV1 immunoreactivity score for low (0-0.5), moderate (>0.5-1.5), and high (>1.5-2) CAV1 expression levels of respective tumor cells (p53 overexpression n=10, p53 wild-type n= 26, p53 low n= 7). **(B)** Overall survival curves for patients according to the p53 expression in tumors. HR and log-rank P (wild-type: blue line versus loss: black line) are indicated. HR=2.28 (0.80-6.49) log-rank P=0.053 (overexpression: red line versus loss). **(C)** Overall survival curves for patients with low (n=12), moderate (n=13) and high (n=18) CAV1 content within the tumor stroma. HR and log-rank P (low versus high CAV1 levels) are indicated. HR=2.33 (0.92-5.91), log-rank P=0.056 (moderate versus high). **(D)** Overall survival curves for patients with p16-negative tumors and low (n=8), moderate (n= 6) and high (n=12) CAV1 content within the tumor stroma. HR and log-rank P (low versus high CAV1 levels) are indicated. HR=6.22 (1.21-32.02) log-rank P=0.0025 (moderate versus high).

phenotype in advanced carcinomas (25, 39, 40). This characteristic epithelial-stromal CAV1 shift was found to be functionally relevant to tumor progression and correlated with reduced overall survival. Today, there is increasing evidence that the tumor-stromal environment is not just a supporting tumor compartment but rather a key player in carcinogenesis, and impacting on cancer cell invasiveness, progression and potentially therapy resistance (57–59). Upon malignant transformation, tumor cells modulate their surrounding stroma as they grow that in turn synergistically impacts on tumor progression (60, 61). Herein, the integral membrane protein CAV1 that is abundantly expressed stromal cells (fibrocytes, fibroblasts, smooth muscle cells, adipocytes, endothelial cells), and to a variable degree in epithelial cells, gained attraction (29, 30, 62). Early in tumorigenesis CAV1 levels may decline and allow tumor cells to multiply (25, 63, 64). Upon tumor progression, an up-regulation of CAV1 could then be observed, while stromal CAV1 expression levels decline, in particular in the fibroblastic compartment; effects that were

found to be functionally relevant to tumor progression, invasion, metastasis and resistance to cancer therapeutic treatment (25, 27, 65).

Invasive low-grade penile neoplasms are expected to have an excellent prognosis whereas invasive high-grade tumors (with regional or systemic dissemination) have a worse clinical outcome (19, 20, 66). Accordingly, we demonstrate that patients' survival significantly decreased with increasing tumor grades as well as increasing tumor stages, and that higher penile tumor grades (as well as higher tumor stages) were characterized by increased CAV1 expression levels within the malignant tumor cells while there was a significant loss of stromal CAV1. Furthermore, it was already reported that HPV-positive tumors could account for a better prognosis strongly suggesting the use of the HPV status of the tumor tissues as an important prognostic marker (67, 68). This remains controversial since there were other studies reporting that the HPV status was not predictive of outcome (69). In general, p16 has been demonstrated to be an adequate surrogate for high-risk



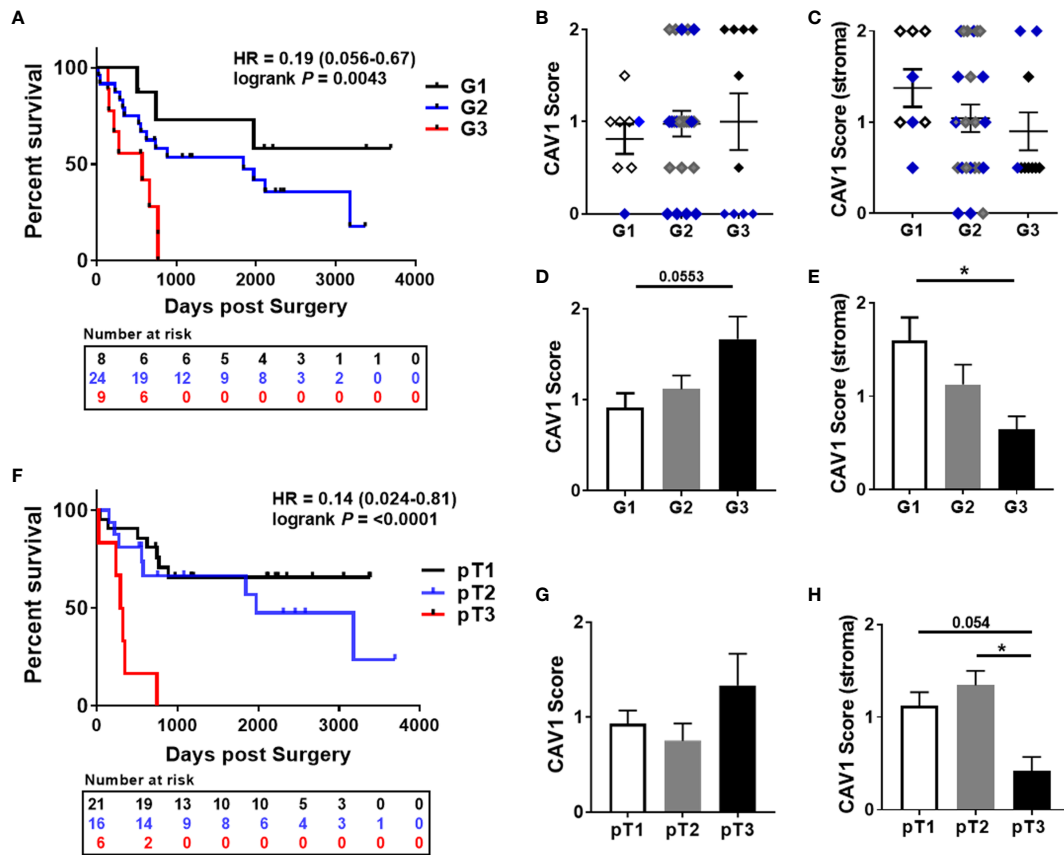


**FIGURE 4** | Epithelial-stromal CAV1 distributions in correlation with malignant epithelial differentiation patterns. Paraffin-sections of human penile carcinomas were stained for CAV1 and analyzed according to the tumor grade. **(A)** Representative images of well differentiated (low-grade, G1), moderately differentiated (G2) and poorly differentiated (high grade, G3) tumors are shown. P16 status is indicated. Scale bar: 200  $\mu$ m, higher magnifications: 50  $\mu$ m. **(B)** Representative images of different areas with variable (decreasing tumor cell) differentiation patterns within the same (p16-negative) tumor specimen are shown. Sections were counterstained using hematoxylin. Asterisks (\*) mark stromal compartments and bold arrows point to epithelial structures. # indicates different patients.

HPV, whereas the gold standard for HPV testing in tumors uses still polymerase chain reaction (7, 70). In the present retrospective cohort, p16 expression levels were significantly correlated with decreased CAV1 expression levels in penile tumor cells, which together with the decreased overall survival of CAV1-overexpressing tumors, would support the idea that p16-positive tumors could account for a better clinical outcome. CAV1 was already found to be down-regulated in cells transformed by HPV (in a p53-dependent manner) (71). The commonest HPV subtypes in penile cancer are types 16 and 18 and the risk of penile cancer is increased in patients with condyloma acuminata (72, 73). In general, the HPV types 16 and 18 harbor the potential to induce tumorigenesis (74, 75). The HPV early genes E6 and E7 are known to disrupt cell cycle regulations by inactivating two tumor suppressors, the retinoblastoma protein (*RB*) and the *p53* transcription factor. Interestingly, restoration of CAV1 expression was able to suppress this HPV-mediated malignant transformation (71, 76). For penile cancers lacking HPV infection, p53 mutations were thought to foster tumorigenesis (76–78). Deletions or mutations of were shown to mediate cell cycle progression, malignant growth of primary penile carcinomas, and correlated negatively with cancer-specific survival (79). Although we did not investigate functionality of the p53 protein in our cohort, a slight trend for increasing p53 levels in p16-negative tumors was

observed, and higher p53 expression levels were associated with a poorer overall survival.

In support of clinical utility in penile cancer, further potential biomarkers have been studied, including squamous cell carcinoma antigen, C-reactive protein as well as proliferation markers (like proliferating cell nuclear antigen, cyclin D1 or Ki-67), unfortunately with only minor degree of evidence (7, 52). Therefore, the impact of these data on personalized strategies for an optimized cancer therapy remains unclear. One example for targeted therapeutic agents in penile carcinoma addressed growth factor receptors with tyrosine kinase activity, particularly the anti-epidermal growth factor receptor (EGFR) by the use of respective monoclonal antibodies (50, 51). EGFR overexpression turned out to be a common feature of penile carcinomas, independently of histologic grade or subtype, and HPV presence (80). However, when used as second-line treatment for patients with refractory disease only modest results were achieved (81). Similar the EGFR-dependent activation of the Ras/Raf/mitogen-activated protein kinase-extracellular signal-regulated kinase-signaling pathway, and as shown for multiple other cancers, activation of the phosphatidylinositol-3-kinase (PI3K), protein kinase B (PKB/AKT), and mammalian target of rapamycin (mTOR) pathway is a frequent event in carcinogenesis that facilitates tumor formation, progression and therapy resistance (82–84).



**FIGURE 5 |** Prognostic impacts of epithelial-stromal CAV1 expressions in penile cancer in relation to the tumor grade. **(A)** Overall survival curves for penile cancer patients according to the tumor grade (low-grade/G1 n=8; moderate/G2 n=23; high grade/G3 n=9). HR and log-rank P (G1 versus G3) are indicated. HR=0.46 (0.17-1.24), log-rank P=0.20 (G1 versus G2); HR=0.35 (0.12-1.08), log-rank P = 0.010 (G2 versus G3). **(B)** According to the tumor grade, the CAV1 immunoreactivity score for low (0-0.5), moderate (>0.5-1.5), and high (>1.5-2) CAV1 expression levels of respective tumor cells was estimated. **(C)** Further on, the CAV1 immunoreactivities of the tumor stroma were determined in correlation with the tumor grades. P16-positivities are indicated by the blue color. According to the tumor grade, CAV1 scores only of the p16-negative tumor epithelium **(D)** and of the tumor stroma **(E)** were analyzed. \* P<0.05 by one-way ANOVA followed by post-hoc Dunnett’s multiple comparisons test. **(F)** Overall survival curves for penile cancer patients according to the tumor stage (pT1 n=21; pT2 n=16; pT3 n=6). HR and log-rank P (pT1 versus pT3) are indicated. HR=0.23 (0.053-1.01), log-rank P=0.20 (pT2 versus pT3). CAV1 immunoreactivities of the tumor epithelium **(G)** and of the stroma**(H)** were determined in correlation with the tumor stages. \*P<0.05, by one-way ANOVA followed by post-hoc Tukey’s multiple comparisons test.

Herein, a high frequency of PIK3CA (the catalytic subunit alpha of PI3K) copy number gains were reported as primary method for the activation of the PI3K-AKT-mTOR pathway in penile carcinogenesis (82, 83, 85). CAV1 was found to activate AKT in prostate cancer, and potentially other malignancies, finally leading to the increased phosphorylation of multiple AKT substrates that mediated increased cancer cell invasiveness (86, 87). Own studies further confirmed that CAV1-dependent AKT signaling, among others, is an important factor for modulating tumor as well as stromal cells proliferation and survival upon cancer therapy (25, 39, 40, 47). Thus, further investigation of epithelial-stromal CAV1 functions as well as the identification of decisive CAV1 downstream targets may allow to characterize and in turn modulate the sensitivity of epithelial tumors to cancer therapy. Unfortunately, the main limitation

concerning penile cancer is based on the small number of available patients, which makes prospective randomized studies in a certain region impossible (16, 22, 88). Most of the available data come from small retrospective studies, as investigated here in a small retrospective cohort of 43 penile SCC. At the same time, no reports considering the role of CAV1 in penile tumors were available. Thus, international collaborations are needed to collect data and gain knowledge on penile SCC prior enabling potential clinical trials (16). Additional available patients would even allow us to evaluate the impact of the characteristic shift in stromal-epithelial CAV1 according to the histologic subtype in penile SCC. Penile SCC can broadly be divided into usual SCC, verruciform tumors, basaloid carcinomas (80). Whereas the prognosis of usual SCC largely depends on location, stage and grade, verruciform



tumors were found to have a good prognosis, while basaloid carcinomas were associated with a poor prognosis and frequently early inguinal nodal metastasis (89–91). Together with the fact that certain cell growth and transformation factors (e.g. the insulin-like growth factor-1 receptor) could already be significantly associated with histologic subtype (and grade), and thus being indicative for prognosis (92), a differential CAV1 distribution according to the histologic subtype might have prognostic relevance and that modulating CAV1 could be useful in treating patients with penile SCC.

## CONCLUSIONS

A characteristic shift in epithelial-stromal CAV1, as known for many other cancer entities during cancer development and progression, was established here for penile SCC. Increasing CAV1 levels in the penile tumor cells of advanced tumor grades and stages were accompanied by a loss of CAV1 within the tumor stroma, a finding that showed a significant correlation with clinicopathological features of penile SCC, particularly correlating with a reduced overall survival. As known from other cancer entities, epithelial-stromal CAV1 expression levels have the potential to serve as novel biomarker to monitor cancer progression and even therapy resistance. Conformingly, we provide further and new evidence that the characteristic shift in stromal-epithelial CAV1 being functionally relevant to tumor progression even occurs in penile SCC. Larger cohorts of patients as well as respective functional studies are highly desired to proof the biomarker potential of CAV1 definitely, as well as to identify the underlying biological mechanisms.

## DATA AVAILABILITY STATEMENT

The raw data supporting the conclusions of this article will be made available by the authors, without undue reservation.

## REFERENCES

1. Siegel RL, Miller KD, Jemal A. Cancer statistics, 2020. *CA Cancer J Clin* (2020) 70(1):7–30. doi: 10.3322/caac.21590
2. Sung H, Ferlay J, Siegel RL, Laversanne M, Soerjomataram I, Jemal A, et al. Global cancer statistics 2020: GLOBOCAN estimates of incidence and mortality worldwide for 36 cancers in 185 countries. *CA Cancer J Clin* (2021). doi: 10.3322/caac.21660
3. Ayres B, Watkin N. Penile cancer: Welcome changes in disease management and remaining challenges. *Nat Rev Urol* (2016) 13(11):637–9. doi: 10.1038/nrurol.2016.204
4. Diorio GJ, Leone AR, Spiess PE. Management of Penile Cancer. *Urology* (2016) 96:15–21. doi: 10.1016/j.urol.2015.12.041
5. Dorff TB, Ballas LK, Schuckman AK. Current Management Strategy for Penile Cancer and Future Directions. *Curr Oncol Rep* (2017) 19(8):54. doi: 10.1007/s11912-017-0615-4
6. Peta E, Cappellesso R, Masi G, Sinigaglia A, Trevisan M, Grassi A, et al. Down-regulation of microRNA-146a is associated with high-risk human papillomavirus infection and epidermal growth factor receptor overexpression in penile squamous cell carcinoma. *Hum Pathol* (2017) 61:33–40. doi: 10.1016/j.humpath.2016.10.019

## ETHICS STATEMENT

The studies involving human participants were reviewed and approved by the local ethics committee of the University Hospital Essen (Ethik-Kommission, Medizinische Fakultät der Universität Duisburg-Essen, ethical approval number: 20-9508-BO). The patients/participants provided their written informed consent to participate in this study.

## AUTHOR CONTRIBUTIONS

AP: conception and design, collection and/or assembly of data, data analysis and interpretation, manuscript writing, and final approval of manuscript. HR: collection and/or assembly of data, provision of study material or patients, and final approval of manuscript. AW: collection and/or assembly of data and final approval of manuscript. CD: collection and/or assembly of data and final approval of manuscript. BH: administrative support, financial support, and final approval of manuscript. VJ: administrative support, financial support, and final approval of manuscript. DK: conception and design, collection and/or assembly of data, data analysis and interpretation, manuscript writing, financial support, and final approval of manuscript. All authors contributed to the article and approved the submitted version.

## FUNDING

This work was supported by grants of the DFG (GRK1739 1/2).

## ACKNOWLEDGMENTS

We thank Mohamed Benchellal and Eva Gau for their excellent technical assistance. We acknowledge support by the Open Access Publication Fund of the University of Duisburg-Essen.

7. Zargar-Shoshtari K, Sharma P, Spiess PE. Insight into novel biomarkers in penile cancer: Redefining the present and future treatment paradigm? *Urol Oncol* (2018) 36(10):433–9. doi: 10.1016/j.urolonc.2017.10.010
8. Reddy JP, Pettaway CA, Levy LB, Pagliaro LC, Tamboli P, Rao P, et al. Factors associated with regional recurrence after lymph node dissection for penile squamous cell carcinoma. *BJU Int* (2017) 119(4):591–7. doi: 10.1111/bju.13686
9. Tang DH, Clark PE, Giannico G, Hameed O, Chang SS, Gellert LL. Lack of P16ink4a over expression in penile squamous cell carcinoma is associated with recurrence after lymph node dissection. *J Urol* (2015) 193(2):519–25. doi: 10.1016/j.juro.2014.08.120
10. Alemany L, Cubilla A, Halec G, Kasamatsu E, Quiros B, Masferrer E, et al. Role of Human Papillomavirus in Penile Carcinomas Worldwide. *Eur Urol* (2016) 69(5):953–61. doi: 10.1016/j.eururo.2015.12.007
11. Marchi FA, Martins DC, Barros-Filho MC, Kuasne H, Busso Lopes AF, Brentani H, et al. Multidimensional integrative analysis uncovers driver candidates and biomarkers in penile carcinoma. *Sci Rep* (2017) 7(1):6707. doi: 10.1038/s41598-017-06659-1
12. Chang SS. Re: EAU Guidelines on Penile Cancer: 2014 Update. *J Urol* (2016) 195(5):1475. doi: 10.1016/j.juro.2016.02.006
13. Baumgarten A, Chipollini J, Yan S, Ottenhof SR, Tang DH, Draeger D, et al. Penile Sparing Surgery for Penile Cancer: A Multicenter International

- Retrospective Cohort. *J Urol* (2018) 199(5):1233–7. doi: 10.1016/j.juro.2017.10.045
14. Fang A, Ferguson J. Penile Sparing Techniques For Penile Cancer. *Postgrad Med* (2020) 132(sup4):42–51. doi: 10.1080/00325481.2020.1822052
  15. Sanchez DF, Soares F, Alvarado-Cabrero I, Canete S, Fernandez-Nestosa MJ, Rodriguez IM, et al. Pathological factors, behavior, and histological prognostic risk groups in subtypes of penile squamous cell carcinomas (SCC). *Semin Diagn Pathol* (2015) 32(3):222–31. doi: 10.1053/j.semmp.2014.12.017
  16. Resch I, Abufaraj M, Hubner NA, Shariat SF. An update on systemic therapy for penile cancer. *Curr Opin Urol* (2020) 30(2):229–33. doi: 10.1097/MOU.0000000000000733
  17. Dickstein RJ, Munsell MF, Pagliaro LC, Pettaway CA. Prognostic factors influencing survival from regionally advanced squamous cell carcinoma of the penis after preoperative chemotherapy. *BJU Int* (2016) 117(1):118–25. doi: 10.1111/bju.12946
  18. Wiechno P, Kalinowski T, Trych B, Sikora-Kupis B, Demkow T, Karwanski M. Prognostic factors in patients undergoing lymphadenectomy for squamous cell carcinoma of the penis. *Urol Int* (2014) 92(2):194–201. doi: 10.1159/000353095
  19. Reyes ME, Borges H, Adjao MS, Vijayakumar N, Spiess PE, Schabath MB. Novel Prognostic Models for Patients With Penile Carcinoma. *Cancer Control* (2020) 27(1):1073274820924728. doi: 10.1177/1073274820924728
  20. Aziz A, May M, Hakenberg OW, Brookman-May SD. Re: Differences in Survival Associated with Lymph Node Dissection in Patients with Invasive Penile Cancer: Results from the National Cancer Database. *Eur Urol* (2018) 74(5):678–9. doi: 10.1016/j.eururo.2018.07.016
  21. Chahoud J, Kohli M, Spiess PE. Management of Advanced Penile Cancer. *Mayo Clin Proc* (2020). doi: 10.1016/j.mayocp.2020.06.031
  22. Hakenberg OW, Drager DL, Erbersdobler A, Naumann CM, Junemann KP, Protzel C. The Diagnosis and Treatment of Penile Cancer. *Dtsch Arztebl Int* (2018) 115(39):646–52. doi: 10.3238/arztebl.2018.0646
  23. Ahmed ME, Khalil MI, Kamel MH, Karnes RJ, Spiess PE. Penile cancer: Welcome changes in disease management and remaining challenges. *Curr Treat Options Oncol* (2020) 22(1):4. doi: 10.1007/s11864-020-00802-3
  24. Johnston MJ, Nigam R. Recent advances in the management of penile cancer. *F1000Res* (2019) 8:1–8. doi: 10.12688/f1000research.18185.1
  25. Ketteler J, Klein D. Caveolin-1, cancer and therapy resistance. *Int J Cancer* (2018) 143(9):2092–104. doi: 10.1002/ijc.31369
  26. Chen D, Che G. Value of caveolin-1 in cancer progression and prognosis: Emphasis on cancer-associated fibroblasts, human cancer cells and mechanism of caveolin-1 expression (Review). *Oncol Lett* (2014) 8(4):1409–21. doi: 10.3892/ol.2014.2385
  27. Martinez-Outschoorn UE, Sotgia F, Lisanti MP. Caveolae and signalling in cancer. *Nat Rev Cancer* (2015) 15(4):225–37. doi: 10.1038/nrc3915
  28. Simon L, Campos A, Leyton L, Quest AFG. Caveolin-1 function at the plasma membrane and in intracellular compartments in cancer. *Cancer Metastasis Rev* (2020) 39(2):435–53. doi: 10.1007/s10555-020-09890-x
  29. Sotgia F, Martinez-Outschoorn UE, Howell A, Pestell RG, Pavlides S, Lisanti MP. Caveolin-1 and cancer metabolism in the tumor microenvironment: markers, models, and mechanisms. *Annu Rev Pathol* (2012) 7:423–67. doi: 10.1146/annurev-pathol-011811-120856
  30. Chidlow JH Jr, Sessa WC. Caveolae, caveolins, and cavins: complex control of cellular signalling and inflammation. *Cardiovasc Res* (2010) 86(2):219–25. doi: 10.1093/cvr/cvq075
  31. Tahir SA, Frolov A, Hayes TG, Mims MP, Miles BJ, Lerner SP, et al. Preoperative serum caveolin-1 as a prognostic marker for recurrence in a radical prostatectomy cohort. *Clin Cancer Res* (2006) 12(16):4872–5. doi: 10.1158/1078-0432.CCR-06-0417
  32. Bertino EM, Williams TM, Nana-Sinkam SP, Shilo K, Chatterjee M, Mo X, et al. Stromal Caveolin-1 Is Associated With Response and Survival in a Phase II Trial of nab-Paclitaxel With Carboplatin for Advanced NSCLC Patients. *Clin Lung Cancer* (2015) 16(6):466–74. doi: 10.1016/j.clcc.2015.05.004
  33. Chatterjee M, Ben-Josef E, Thomas DG, Morgan MA, Zalupski MM, Khan G, et al. Caveolin-1 is Associated with Tumor Progression and Confers a Multi-Modality Resistance Phenotype in Pancreatic Cancer. *Sci Rep* (2015) 5:10867. doi: 10.1038/srep10867
  34. Ho CC, Kuo SH, Huang PH, Huang HY, Yang CH, Yang PC. Caveolin-1 expression is significantly associated with drug resistance and poor prognosis in advanced non-small cell lung cancer patients treated with gemcitabine-based chemotherapy. *Lung Cancer* (2008) 59(1):105–10. doi: 10.1016/j.lungcan.2007.07.024
  35. Zhan P, Shen XK, Qian Q, Wang Q, Zhu JP, Zhang Y, et al. Expression of caveolin-1 is correlated with disease stage and survival in lung adenocarcinomas. *Oncol Rep* (2012) 27(4):1072–8. doi: 10.3892/or.2011.1605
  36. Mahmood J, Zaveri SR, Murti SC, Alexander AA, Connors CQ, Shukla HD, et al. Caveolin-1: a novel prognostic biomarker of radioresistance in cancer. *Int J Radiat Biol* (2016) 92(12):747–53. doi: 10.1080/09553002.2016.1222096
  37. Ayala G, Morello M, Frolov A, You S, Li R, Rosati F, et al. Loss of caveolin-1 in prostate cancer stroma correlates with reduced relapse-free survival and is functionally relevant to tumour progression. *J Pathol* 231(1):77–87. doi: 10.1002/path.4217
  38. Witkiewicz AK, Dasgupta A, Sotgia F, Mercier I, Pestell RG, Sabel M, et al. An absence of stromal caveolin-1 expression predicts early tumor recurrence and poor clinical outcome in human breast cancers. *Am J Pathol* (2013) 174(6):2023–34. doi: 10.2353/ajpath.2009.080873
  39. Ketteler J, Panic A, Reis H, Wittka A, Maier P, Herskind C, et al. Progression-Related Loss of Stromal Caveolin 1 Levels Mediates Radiation Resistance in Prostate Carcinoma via the Apoptosis Inhibitor TRIAP1. *J Clin Med* (2019) 8(3):348–52. doi: 10.3390/jcm8030348
  40. Panic A, Ketteler J, Reis H, Sak A, Herskind C, Maier P, et al. Progression-related loss of stromal Caveolin 1 levels fosters the growth of human PC3 xenografts and mediates radiation resistance. *Sci Rep* (2017) 7:41138. doi: 10.1038/srep41138
  41. Bandini M, Albersen B, Chipollini J, Pederzoli F, Zhu Y, Ye DW, et al. Optimising the selection of candidates for neoadjuvant chemotherapy amongst patients with node-positive penile squamous cell carcinoma. *BJU Int* (2020) 125(6):867–75. doi: 10.1111/bju.15054
  42. Bada M, Berardinelli F, Nyirady P, Varga J, Ditonno P, Battaglia M, et al. Adherence to the EAU guidelines on Penile Cancer Treatment: European, multicentre, retrospective study. *J Cancer Res Clin Oncol* (2019) 145(4):921–6. doi: 10.1007/s00432-019-02864-9
  43. Cindolo L, Spiess PE, Bada M, Chipollini JJ, Nyirady P, Chiodini P, et al. Adherence to EAU guidelines on penile cancer translates into better outcomes: a multicenter international study. *World J Urol* (2019) 37(8):1649–57. doi: 10.1007/s00345-018-2549-3
  44. Schemper M, Smith TL. A note on quantifying follow-up in studies of failure time. *Control Clin Trials* (1996) 17(4):343–6. doi: 10.1016/0197-2456(96)00075-x
  45. Reis H, Serrette R, Posada J, Lu V, Chen YB, Gopalan A, et al. PD-L1 Expression in Urothelial Carcinoma With Predominant or Pure Variant Histology: Concordance Among 3 Commonly Used and Commercially Available Antibodies. *Am J Surg Pathol* (2019) 43(7):920–7. doi: 10.1097/PAS.0000000000001264
  46. Niedworok C, Panitz M, Szarvas T, Reis H, Reis AC, Szendroi A, et al. Urachal Carcinoma of the Bladder: Impact of Clinical and Immunohistochemical Parameters on Prognosis. *J Urol* (2016) 195(6):1690–6. doi: 10.1016/j.juro.2015.11.067
  47. Ketteler J, Wittka A, Leonetti D, Roy VV, Estephan H, Maier P, et al. Caveolin-1 regulates the ASase/ceramide-mediated radiation response of endothelial cells in the context of tumor-stroma interactions. *Cell Death Dis* (2020) 11(4):228. doi: 10.1038/s41419-020-2418-z
  48. Remmele W, Stegner HE. [Recommendation for uniform definition of an immunoreactive score (IRS) for immunohistochemical estrogen receptor detection (ER-ICA) in breast cancer tissue]. *Pathologe* (1987) 8(3):138–40.
  49. Boltze C, Mundschenk J, Unger N, Schneider-Stock R, Peters B, Mawrin C, et al. Expression profile of the telomeric complex discriminates between benign and malignant pheochromocytoma. *J Clin Endocrinol Metab* (2003) 88(9):4280–6. doi: 10.1210/jc.2002-021299
  50. Rodney S, Feber A, Arya M, Muneer A. Molecular markers in penile cancer. *Curr Probl Cancer* (2015) 39(3):137–45. doi: 10.1016/j.cupr.2015.03.005
  51. Thoma C. Penile cancer: Ongoing search for molecular prognostic markers. *Nat Rev Urol* (2016) 13(4):184. doi: 10.1038/nrurol.2016.49
  52. Vuichoud C, Klap J, Loughlin KR. The Emerging Role and Promise of Biomarkers in Penile Cancer. *Urol Clin North Am* (2016) 43(1):135–43. doi: 10.1016/j.ucl.2015.08.012



53. Peyraud F, Allenet C, Gross-Goupil M, Domblides C, Lefort F, Daste A, et al. Current management and future perspectives of penile cancer: An updated review. *Cancer Treat Rev* (2020) 90:102087. doi: 10.1016/j.ctrv.2020.102087
54. Graafland NM, Lam W, Leijte JA, Yap T, Gallee MP, Corbishley C, et al. Prognostic factors for occult inguinal lymph node involvement in penile carcinoma and assessment of the high-risk EAU subgroup: a two-institution analysis of 342 clinically node-negative patients. *Eur Urol* (2010) 58(5):742–7. doi: 10.1016/j.eururo.2010.08.015
55. Van Poppel H, Watkin NA, Osanto S, Moonen L, Horwich A, Kataja V, et al. Penile cancer: ESMO Clinical Practice Guidelines for diagnosis, treatment and follow-up. *Ann Oncol* (2013) 24 Suppl 6:vi115–24. doi: 10.1093/annonc/mdt286
56. Leijte JA, Kirrander P, Antonini N, Windahl T, Horenblas S. Recurrence patterns of squamous cell carcinoma of the penis: recommendations for follow-up based on a two-centre analysis of 700 patients. *Eur Urol* (2008) 54(1):161–8. doi: 10.1016/j.eururo.2008.04.016
57. Bissell MJ. Thinking in three dimensions: discovering reciprocal signaling between the extracellular matrix and nucleus and the wisdom of microenvironment and tissue architecture. *Mol Biol Cell* (2016) 27(21):3205–9. doi: 10.1091/mbc.E16-06-0440
58. Mittal V, El Rayes T, Narula N, McGraw TE, Altorki NK, Barcellos-Hoff MH. The Microenvironment of Lung Cancer and Therapeutic Implications. *Adv Exp Med Biol* (2016) 890:75–110. doi: 10.1007/978-3-319-24932-2\_5
59. Bissell MJ, Hines WC. Why don't we get more cancer? A proposed role of the microenvironment in restraining cancer progression. *Nat Med* (2011) 17(3):320–9. doi: 10.1038/nm.2328
60. Bissell MJ, Radisky D. Putting tumours in context. *Nat Rev Cancer* (2001) 1(1):46–54. doi: 10.1038/35094059
61. Furuta S, Ghajar CM, Bissell MJ. Caveolin-1: would-be Achilles' heel of tumor microenvironment? *Cell Cycle* (2011) 10(20):3431. doi: 10.4161/cc.10.20.17648
62. Xu H, Zhang L, Chen W, Xu J, Zhang R, Liu R, et al. Inhibitory effect of caveolin-1 in vascular endothelial cells, pericytes and smooth muscle cells. *Oncotarget* (2017) 8(44):76165–73. doi: 10.18632/oncotarget.19191
63. Koleske AJ, Baltimore D, Lisanti MP. Reduction of caveolin and caveolae in oncogenically transformed cells. *Proc Natl Acad Sci U.S.A.* (1995) 92(5):1381–5. doi: 10.1073/pnas.92.5.1381
64. Senetta R, Stella G, Pozzi E, Sturli N, Massi D, Cassoni P. Caveolin-1 as a promoter of tumour spreading: when, how, where and why. *J Cell Mol Med* (2013) 17(3):325–36. doi: 10.1111/jcmm.12030
65. Fu P, Chen F, Pan Q, Zhao X, Zhao C, Cho WC, et al. The different functions and clinical significances of caveolin-1 in human adenocarcinoma and squamous cell carcinoma. *Onco Targets Ther* (2017) 10:819–35. doi: 10.2147/OTT.S123912
66. Li ZS, Ornellas AA, Schwentner C, Li X, Chau A, Netto G, et al. A modified clinicopathological tumor staging system for survival prediction of patients with penile cancer. *Cancer Commun (Lond)* (2018) 38(1):68. doi: 10.1186/s40880-018-0340-x
67. Canete-Portillo S, Velazquez EF, Kristiansen G, Egevad L, Grignon D, Chau A, et al. Report from the International Society of Urological Pathology (ISUP) Consultation Conference on Molecular Pathology of Urogenital Cancers V: Recommendations on the Use of Immunohistochemical and Molecular Biomarkers in Penile Cancer. *Am J Surg Pathol* (2020) 44(7):e80–6. doi: 10.1097/PAS.0000000000001477
68. Cubilla AL, Lloveras B, Alejo M, Clavero O, Chau A, Kasamatsu E, et al. Value of p16(INK)(4)(a) in the pathology of invasive penile squamous cell carcinomas: A report of 202 cases. *Am J Surg Pathol* (2011) 35(2):253–61. doi: 10.1097/PAS.0b013e318203cdba
69. Bezerra SM, Chau A, Ball MW, Faraj SF, Munari E, Gonzalez-Roibon N, et al. Human papillomavirus infection and immunohistochemical p16(INK4a) expression as predictors of outcome in penile squamous cell carcinomas. *Hum Pathol* (2015) 46(4):532–40. doi: 10.1016/j.humpath.2014.12.004
70. Djajadiningrat RS, Jordanova ES, Kroon BK, van Werkhoven E, de Jong J, Pronk DT, et al. Human papillomavirus prevalence in invasive penile cancer and association with clinical outcome. *J Urol* (2015) 193(2):526–31. doi: 10.1016/j.juro.2014.08.077
71. Razani B, Altschuler Y, Zhu L, Pestell RG, Mostov KE, Lisanti MP. Caveolin-1 expression is down-regulated in cells transformed by the human papilloma virus in a p53-dependent manner. Replacement of caveolin-1 expression suppresses HPV-mediated cell transformation. *Biochemistry* (2000) 39(45):13916–24. doi: 10.1021/bi001489b
72. Nordenvall C, Chang ET, Adami HO, Ye W. Cancer risk among patients with condylomata acuminata. *Int J Cancer* (2006) 119(4):888–93. doi: 10.1002/ijc.21892
73. Sanchez DF, Canete S, Fernandez-Nestosa MJ, Lezcano C, Rodriguez I, Barreto J, et al. HPV- and non-HPV-related subtypes of penile squamous cell carcinoma (SCC): Morphological features and differential diagnosis according to the new WHO classification (2015). *Semin Diagn Pathol* (2015) 32(3):198–221. doi: 10.1053/j.semmp.2014.12.018
74. Kayes O, Ahmed HU, Arya M, Minhas S. Molecular and genetic pathways in penile cancer. *Lancet Oncol* (2007) 8(5):420–9. doi: 10.1016/S1470-2045(07)70137-7
75. Litwin TR, Clarke MA, Dean M, Wentzensen N. Somatic Host Cell Alterations in HPV Carcinogenesis. *Viruses* (2017) 9(8):206–28. doi: 10.3390/v9080206
76. Werness BA, Levine AJ, Howley PM. Association of human papillomavirus types 16 and 18 E6 proteins with p53. *Science* (1990) 248(4951):76–9. doi: 10.1126/science.2157286
77. Scheffner M, Werness BA, Huibregtse JM, Levine AJ, Howley PM. The E6 oncoprotein encoded by human papillomavirus types 16 and 18 promotes the degradation of p53. *Cell* (1990) 63(6):1129–36. doi: 10.1016/0092-8674(90)90409-8
78. Mannweiler S, Sygulla S, Winter E, Regauer S. Two major pathways of penile carcinogenesis: HPV-induced penile cancers overexpress p16ink4a, HPV-negative cancers associated with dermatoses express p53, but lack p16ink4a overexpression. *J Am Acad Dermatol* (2013) 69(1):73–81. doi: 10.1016/j.jaad.2012.12.973
79. Gunia S, Kakies C, Erbersdobler A, Hakenberg OW, Koch S, May M. Expression of p53, p21 and cyclin D1 in penile cancer: p53 predicts poor prognosis. *J Clin Pathol* (2012) 65(3):232–6. doi: 10.1136/jclinpath-2011-200429
80. Chau A, Munari E, Katz B, Sharma R, Lecksell K, Cubilla AL, et al. The epidermal growth factor receptor is frequently overexpressed in penile squamous cell carcinomas: a tissue microarray and digital image analysis study of 112 cases. *Hum Pathol* (2013) 44(12):2690–5. doi: 10.1016/j.humpath.2013.07.012
81. Gupta S, Sonpavde G. Emerging Systemic Therapies for the Management of Penile Cancer. *Urol Clin North Am* (2016) 43(4):481–91. doi: 10.1016/j.ucl.2016.06.009
82. Adimonye A, Stankiewicz E, Kudahetti S, Trevisan G, Tinwell B, Corbishley C, et al. Analysis of the PI3K-AKT-mTOR pathway in penile cancer: evaluation of a therapeutically targetable pathway. *Oncotarget* (2018) 9(22):16074–86. doi: 10.18632/oncotarget.24688
83. Shorning BY, Dass MS, Smalley MJ, Pearson HB. The PI3K-AKT-mTOR Pathway and Prostate Cancer: At the Crossroads of AR, MAPK, and WNT Signaling. *Int J Mol Sci* (2020) 21(12):4507–54. doi: 10.3390/ijms21124507
84. Jiang N, Dai Q, Su X, Fu J, Feng X, Peng J. Role of PI3K/AKT pathway in cancer: the framework of malignant behavior. *Mol Biol Rep* (2020) 47(6):4587–629. doi: 10.1007/s11033-020-05435-1
85. Adimonye A, Stankiewicz E, Touche S, Kudahetti S, Tinwell B, Corbishley C, et al. The Prognostic Value of PIK3CA Copy Number Gain in Penile Cancer. *Urology* (2018). doi: 10.1016/j.urology.2018.03.056
86. Li L, Ren CH, Tahir SA, Ren C, Thompson TC. Caveolin-1 maintains activated Akt in prostate cancer cells through scaffolding domain binding site interactions with and inhibition of serine/threonine protein phosphatases PP1 and PP2A. *Mol Cell Biol* (2003) 23(24):9389–404. doi: 10.1128/mcb.23.24.9389-9404.2003
87. Sugiyama MG, Fairm GD, Antonescu CN. Akt-ing Up Just About Everywhere: Compartment-Specific Akt Activation and Function in Receptor Tyrosine Kinase Signaling. *Front Cell Dev Biol* (2019) 7:70. doi: 10.3389/fcell.2019.00070
88. Protzel C, Hakenberg OW. [Penile cancer : Diagnosis and treatment]. *Urol A* (2020) 59(2):209–18. doi: 10.1007/s00120-020-01128-6
89. Chau A, Caballero C, Soares F, Guimaraes GC, Cunha IW, Reuter V, et al. The prognostic index: a useful pathologic guide for prediction of nodal metastases and survival in penile squamous cell carcinoma. *Am J Surg Pathol* (2009) 33(7):1049–57. doi: 10.1097/PAS.0b013e31819d17eb
90. Hakenberg OW, Comperat EM, Minhas S, Necchi A, Protzel C, Watkin N. EAU guidelines on penile cancer: 2014 update. *Eur Urol* (2015) 67(1):142–50. doi: 10.1016/j.eururo.2014.10.017
91. Chau A. Risk Group Systems for Penile Cancer Management: A Study of 203 Patients With Invasive Squamous Cell Carcinoma. *Urology* (2015) 86(4):790–6. doi: 10.1016/j.urology.2015.03.050

92. Faraj SF, Gonzalez-Roibon N, Munari E, Sharma R, Burnett AL, Cubilla AL, et al. Strong association of insulin-like growth factor 1 receptor expression with histologic grade, subtype, and HPV status in penile squamous cell carcinomas: a tissue microarray study of 112 cases. *Virchows Arch* (2017) 470(6):695–701. doi: 10.1007/s00428-017-2110-6

**Conflict of Interest:** BH reports personal fees from ABX, Bayer, Lightpoint Medical, Inc., Janssen R&D, Bristol-Myers-Squibb, and Astellas, and travel from AstraZeneca, Janssen R&D, and Astellas.

The remaining authors declare that the research was conducted in the absence of any commercial or financial relationships that could be construed as a potential conflict of interest.

*Copyright © 2021 Panic, Reis, Wittka, Darr, Hadaschik, Jendrossek and Klein. This is an open-access article distributed under the terms of the Creative Commons Attribution License (CC BY). The use, distribution or reproduction in other forums is permitted, provided the original author(s) and the copyright owner(s) are credited and that the original publication in this journal is cited, in accordance with accepted academic practice. No use, distribution or reproduction is permitted which does not comply with these terms.*