



# Interleukin-31 Receptor $\alpha$ Is Required for Basal-Like Breast Cancer Progression

Yanling He<sup>1†</sup>, Xinyuan Zhang<sup>1†</sup>, Weijun Pan<sup>1†</sup>, Fang Tai<sup>1</sup>, Li Liang<sup>1</sup> and Jian Shi<sup>1,2\*</sup>

<sup>1</sup> Department of Pathology, Nanfang Hospital & School of Basic Medical Science, Southern Medical University, Guangzhou, China, <sup>2</sup> School of Basic Medical Science, Guangzhou Medical University, Guangzhou, China

**Purpose:** Interleukin-31 receptor  $\alpha$  (IL31RA) usually mediates IL-31 induced inflammation and allergic diseases. However, the functional roles of IL-31/IL31RA signaling in basal-like breast cancer (BLBC) progression remain totally unclear.

**Methods:** Tumorsphere formation, transwell, and wound healing assays were used to measure the BLBC progression. We implanted tumor cells in mammary fat pad and tail vein of nude mice to detect the growth and metastasis of BLBC cells. Luciferase and ChIP assays were employed to measure the transcriptional regulation. Western blot and real-time PCR assays as well as bio-informatics analyses were conducted to observe the expression of IL31RA.

**Results:** We found that silencing of *IL31RA* suppresses the cancer stem cell-like properties, migration and invasion of BLBC cells *in vitro* as well as tumor growth and metastasis *in vivo*. Knockdown of *IL31RA* ameliorates IL-31-mediated pro-oncogenic functions. Overexpression of IL31RA in luminal breast cancer cells enhances the cancer stem cell-like properties and cell motility. Our data further identified IL31RA as a target gene of Twist/BRD4 transcription complex.

**Conclusion:** Overall, these data indicate that IL31RA promotes basal-like breast cancer progression and metastasis, suggesting that targeting of IL-31/IL31RA axis might be beneficial to treatment of BLBC.

**Keywords:** IL31RA, IL31, Twist, BRD4, BLBC

## OPEN ACCESS

### Edited by:

Binhua Peter Zhou,  
University of Kentucky, United States

### Reviewed by:

Yifan Wang,  
Tongde Hospital of Zhejiang  
Province, China  
Yadi Wu,  
University of Kentucky, United States

### \*Correspondence:

Jian Shi  
jianshismu@126.com

<sup>†</sup>These authors share first authorship

### Specialty section:

This article was submitted to  
Molecular and Cellular Oncology,  
a section of the journal  
Frontiers in Oncology

**Received:** 16 February 2020

**Accepted:** 27 April 2020

**Published:** 27 May 2020

### Citation:

He Y, Zhang X, Pan W, Tai F, Liang L  
and Shi J (2020) Interleukin-31  
Receptor  $\alpha$  Is Required for Basal-Like  
Breast Cancer Progression.  
Front. Oncol. 10:816.  
doi: 10.3389/fonc.2020.00816

## INTRODUCTION

Basal-like breast cancer (BLBC) is a cluster of breast tumor cells that characterized with low expression of estrogen receptor, progesterone receptor, and epidermal growth factor receptor 2; it frequently occurs in young women and has higher incidence rates of distant organ metastasis and recurrence than hormone receptor positive breast cancer. BLBC is insensitive to endocrine or HER2-targeted therapies with low 5-year survival rates. Few systemic treatment options exist besides chemotherapy (1–3).

Interestingly, BLBC is an inflammation-associated disease, its rapid growth and metastasis heavily relies on aberrant up-regulation of pro-oncogenic inflammatory pathways (4). For example, plenty of studies have observed that two critical cytokines, IL-6 and IL-8, are up-regulated in BLBC which are required for maintenance of breast cancer stem cell-like properties (5). Usually, BLBC has high level of infiltration of tumor associated macrophage and lymphocytes compared

with other subtypes, which is correlated with the high risk for progression and distant metastasis. It is well-established that Th2-type and CD4-positive T cells are basic constituents of the tumor microenvironment (6). Interestingly, activated Th2-type or CD4-positive T cells are able to produce Interleukin-31 (IL-31), a member of IL-6 cytokine family. IL-31 frequently activates JAK2-STAT3 signaling, promoting inflammation and allergic diseases, such as asthma and dermatitis (7). Normally, IL-31 recognizes Interleukin-31 receptor  $\alpha$  (IL31RA), a common receptor subunit for IL-6-type cytokines on the cell membrane. IL31RA, frequently interacting with oncostatin M receptor, mediates biological or pathological functions of IL-31 (8), as evidenced by the fact that *Il31ra*-deficient mice did not develop alopecia or pruritus in response to IL-31 treatment (9). Although it is realized that expression of IL31RA mRNA is induced after stimulation with IFN- $\gamma$  (10), the transcriptional regulation manner of this gene is barely known. More importantly, the pathological role of IL-31/IL31RA axis in tumor progression is largely unclear. In this study, we tried to discern the functional role of IL31RA in BLBC progression and make clear its transcription regulation manner.

Twist is a powerful epithelial-mesenchymal transition (EMT)-inducing transcription factor that activates the expression of mesenchymal-type genes and represses the epithelial phenotype (11). Twist mediated EMT process is critical for cancer cell invasion and metastasis (12, 13), and the acquisition of cancer stem-like property (14, 15). Our previous data indicated that activated Twist/BRD4 complex occupies the super-enhancer regions of oncogenes and maintains their expression. Pharmacologic inhibition of the Twist-BRD4 association by BET-specific BD inhibitors suppressed invasion, cancer stem cell (CSC)-like properties, and tumorigenicity of BLBC cells (16). However, whether Twist/BRD4 transcription complex modulates the cytokine signaling and inflammation process remains obscure.

In this study, we found that IL31RA is required for cancer stem cell (CSC)-like properties, invasion and metastasis of BLBC cells, implicating that specific targeting of this protein represents a potential therapy for BLBC treatment.

## MATERIALS AND METHODS

### Reagents

Antibodies for p-STAT3 and BRD4 were purchased from Cell Signaling (Danvers, MA). Antibodies for Twist were from Abcam (Cambridge, MA). IL31RA antibody was from GeneTex (Irvine, CA). ShRNA against IL31RA and antibody against Actin were purchased from Sigma-Aldrich (St. Louis, MO). Purified human recombinant IL-31 protein was obtained from R&D systems (Minneapolis, USA). IL31RA lentivirus plasmid was purchased from GeneCopoeia (Guangzhou, China).

siRNAs for Twist and BRD4 were obtained from Dharmacon (USA).

### Cell Culture

Breast cancer cell lines BT549 and T47D were maintained in RPMI-1640 medium with 10% fetal bovine serum. Breast

cancer cell lines MDA-MB-231, MDA-MB-157, MDA-MB-453, MCF7 and BT474 were cultured using Dulbecco's Modified Eagle Medium containing 10% FBS. Penicillin/streptomycin were added to cell culture medium. All cell lines were obtained from ATCC. Stable cell clones were constructed by selection using puromycin (1  $\mu$ g/mL). For siRNA transfection, cells were seeded about  $1 \times 10^5$  cells per well in medium with 10% FBS and transfected with siRNA using siRNA-mate reagent (GenePharma) after reaching 70% confluency.

### Western Blot

Cells were harvested and lysed, protein concentration was determined using BCA protein assay kit. Equal amounts of purified proteins were separated by SDS-PAGE electrophoresis and transferred onto PVDF membranes. Protein signals were detected using Enhanced chemiluminescence kit (FDbio science). Primary antibodies concentrations were used as following: IL31RA (1:1,000, GeneTex), p-STAT3 (1:1,000, Cell signaling),  $\beta$ -Actin (1:1,000, Transgen). Anti-rabbit or anti-mouse secondary antibody (Earthox) was used at 1:5,000 dilution.

### RT-PCR Analysis

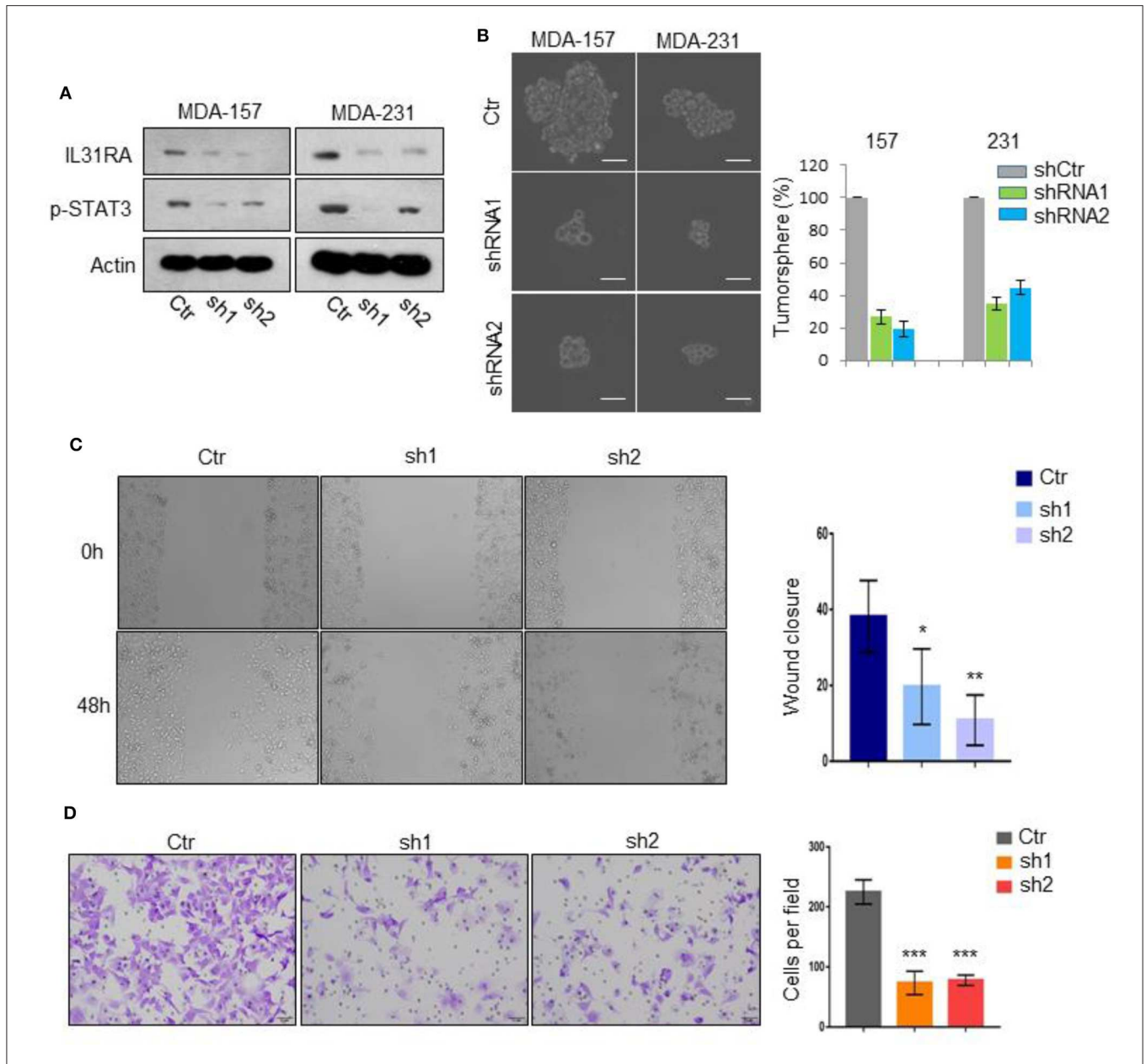
Total RNA was extracted from cells by RNeasy Mini Kit (#74104, Qiagen, Valencia, CA), and 1  $\mu$ g of RNA was reverse transcribed by SuperScript<sup>R</sup> III Reverse Transcriptase (#18080044) from Thermo Fisher Scientific (Waltham, MA). Real-time PCR was analyzed using Power SYBR Green Master Mix (Applied Biosystems, USA). Expression values relative to control were calculated using the  $\Delta\Delta$ CT method. GAPDH was used as a housekeeping gene for normalization. Results were represented as relative fold change. The primers used for *IL31RA* gene were: 5'-ctggagtgactggagccaag-3' and 5'-ctaggactgggctctctt-3'.

### Tumorsphere

$1 \times 10^4$  cells were plated as single-cell suspensions on ultra-low attachment plates (Corning) in DMEM/F12 medium supplemented with 20 ng/ml EGF, 10  $\mu$ g/ml insulin, 0.5  $\mu$ g/ml hydrocortisone and B27. Tumorspheres were counted and taken photos after 5–7 days.

### Wound-Healing and Transwell Assay

For wound healing assay, cells were seeded at 80% confluency and cultured overnight. The culture was scratched with a 200  $\mu$ l pipette tip and the wound was allowed to heal for 48 h. The reduction of area between two wound edges was calculated and quantitated. For transwell assay, each insert (8- $\mu$ m pore size, Falcon) was coated with matrigel overnight.  $1 \times 10^5$  control or clone cells were re-suspended in 150  $\mu$ l non-serum medium and seeded in the upper Boyden chamber coated with Matrigel (BD biosciences, San Jose, CA) while the bottom chambers were filled with 600  $\mu$ l non-serum medium plus 100 nM LPA. After 24–48 h, un-invasive cells on the membrane apical side were removed using wet cotton swabs and the invasive cells were stained with crystal violet and counted under microscope. Typical pictures of invaded cells are shown, Scale bar, 100  $\mu$ M. Statistical data (mean  $\pm$  SD) for numbers of invading cells are shown.



**FIGURE 1** | Silencing of *IL31RA* suppresses BLBC progression. **(A)** *IL31RA* gene was knocked down in MDA-MB-231 and MDA-MB-157 cells by shRNA and stable clones were constructed. Expression of *IL31RA* and STAT3 phosphorylation was detected by western blot. **(B)** Cancer stem cell-like properties were determined by tumorsphere assay in vector control and *IL31RA*-knockdown MDA-MB-231 and MDA-MB-157 cells. Scale bar, 100  $\mu$ M. Statistical analysis (mean  $\pm$  SD) for numbers of tumorsphere is shown. **(C)** Cell migration was detected by wound healing assay in vector control and *IL31RA*-knockdown MDA-MB-231 cells for 48 h. Statistical data (mean  $\pm$  SD) for wound closure are shown. \*indicates  $P < 0.05$ , \*\*indicates  $P < 0.01$ . **(D)** Cell invasion was observed by transwell assay in vector control and *IL31RA*-knockdown MDA-MB-231 cells. Scale bar, 100  $\mu$ M. Statistical data (mean  $\pm$  SD) for invaded cells are shown. \*\*\*indicates  $P < 0.001$ . Scale bar, 100  $\mu$ M.

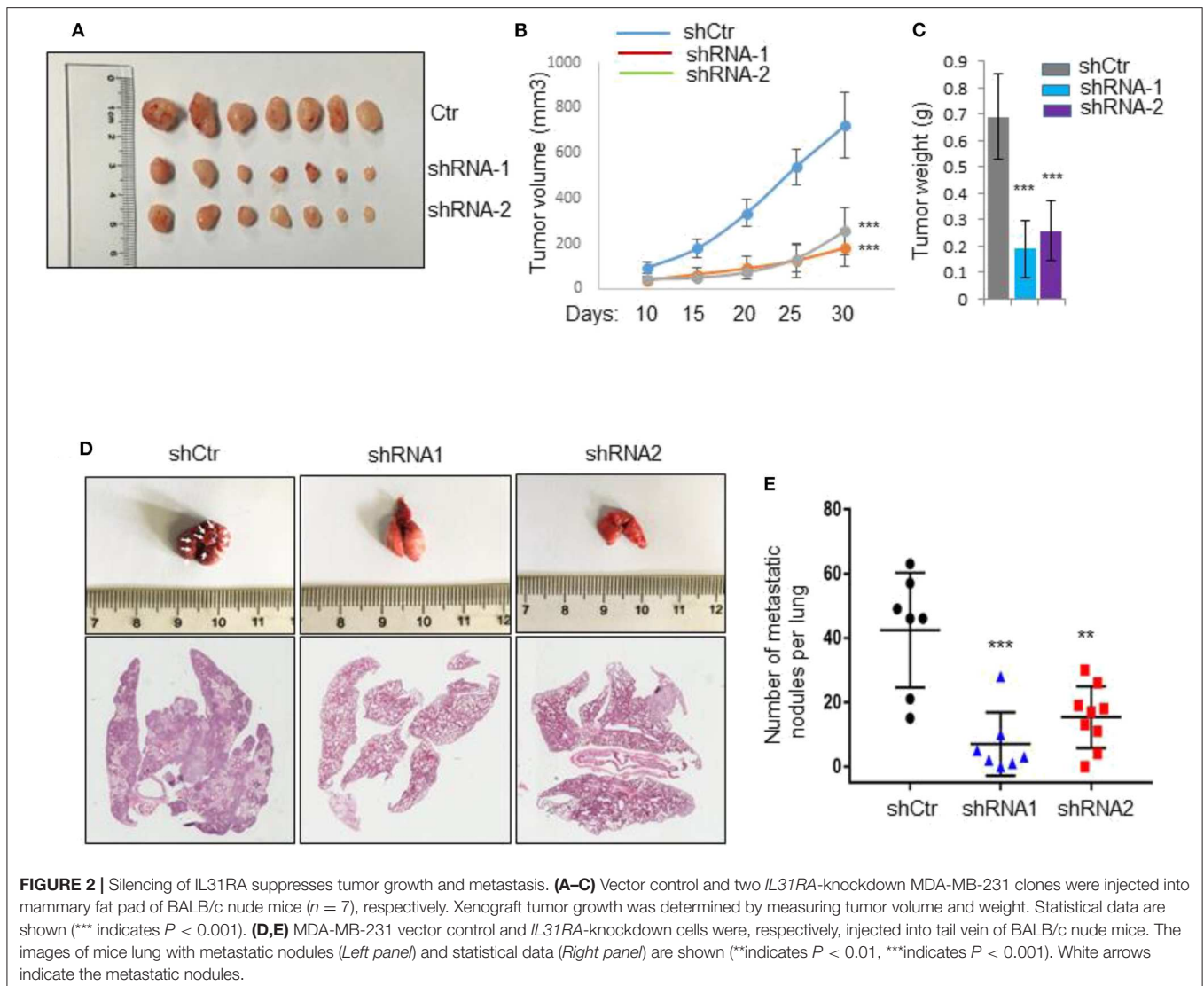
## Chromatin Immunoprecipitation

Approximately  $1 \times 10^6$  control and Twist-knockdown MDA-MB-231 cells as well as JQ1-treated cells were fixed with cross-link solution and collected, ChIP assays were performed using Imprint Chromatin Immunoprecipitation Kit (Sigma, #CHP1) according to the manufacturer's instructions. Twist or BRD4 antibody-immunoprecipitated DNA was analyzed by real-time

PCR. The specific primers for the *IL31RA* promoter were: 5'-GAGACAGGAAGGCAGAGTGT-3' and 5'-TTGCGGACATTCACAGACAC-3'.

## Luciferase Reporter Assay

The human *IL31RA* gene promoter region (988 bp) was cloned and its promoter-luciferase construct was generated.



HEK293T cells were seeded in 60 mm dishes and transfected with mentioned plasmids by FuGene 6 transfection reagent (Roche) for 24 h, cell lysates were extracted with passive lysis buffer (Promega, Madison, WI) and luciferase activity was measured using the Dual-Luciferase Reporter Assay System (Promega, Madison, WI). Relative luciferase activities were calculated as folds of induction compared with vector control.

## Mice Model

Balb/c female nude mice (4–6 weeks) were purchased from Animal Center of Guangdong Province. All animal experiments were approved by the Animal Care and Use Committee of Southern Medical University. Mice were housed in autoclaved, ventilated cages and provided with autoclaved water.  $1 \times 10^6$  MDA-MB-231 vector control cells and *IL31RA*-knockdown cells were, respectively, injected into mammary fat pad of mice ( $n = 7$ ). Tumor growth was monitored with

caliper measurements every 5 days, tumor volume was calculated according to the formula:  $length \times width^2/2$ . After 30 days, mice were euthanized, tumors were weighed and taken photos. For lung metastasis model,  $2 \times 10^5$  MDA-MB-231 cells were re-suspended in 0.1 ml PBS and injected into the tail vein. After 6 weeks, the mice were sacrificed, tumor nodules on the surface of lung were counted and quantified.

## Gene Expression Correlation Analysis

Gene expression data for breast carcinoma patients from 3 studies including GSE48390, GSE76275, and GSE93601 were downloaded from the GEO. The Pearson's and Spearman's correlation coefficients were used to quantify the correlation in expression between *Twist* and *IL31RA*.  $P$ -values were calculated based on testing the hypothesis of correlation coefficient equal to zero, i.e., the expressions of genes are independent.



## Statistical Analyses

Data are presented as mean  $\pm$  SD. Student's *t* test (two-tailed) was used to compare two-group data which satisfy normal distribution with homogeneous variance. Multiple comparisons were analyzed by one-way ANOVA and Welch's test was used for data with unequal variance.  $P < 0.05$  was considered significant. \* $p < 0.05$ , \*\* $p < 0.01$ , and \*\*\* $p < 0.001$ .

## RESULTS

### Silencing of *IL31RA* Suppresses BLBC Progression

To reveal the pathological role of IL31RA in BLBC, we knocked down *IL31RA* gene in MDA-MB-231 and MDA-MB-157 BLBC cell lines and constructed their stable clones. Silencing of *IL31RA* markedly repressed STAT3 tyrosine 705 phosphorylation, indicating the blockade of IL-31/IL31RA signaling (Figure 1A). Intriguingly, both *IL31RA*-knockdown clones showed the reduced cancer stem cell-like properties that determined by tumorsphere formation assay (Figure 1B). *IL31RA*-silencing also significantly inhibited the cell migratory capacity of MDA-MB-231 cells, in which about 10–20% wound closure was observed in *IL31RA*-silencing cells compared with almost 40% closure in vector control cells (Figure 1C). Consistently, remarkably weaker invasive ability was revealed in *IL31RA*-knockdown MDA-MB-231 clones than vector control cells that detected by the transwell invasion assay (Figure 1D). These results indicate that IL31RA is critical for cancer stem cell-like properties and motility of BLBC cells.

### Silencing of *IL31RA* Suppresses Tumor Growth and Metastasis *in vivo*

To further study the functional roles of IL31RA *in vivo*, vector control and *IL31RA*-knockdown MDA-MB-231 clones were injected into mammary fat pad of Balb/c nude mice, respectively. After 30 days, vector control MDA-MB-231 developed into xenograft tumors with volume about 800 mm<sup>3</sup>, *IL31RA*-knockdown clones had significantly reduced tumor size compared with vector control cells (Figures 2A–C). Next, we performed tail vein injection to construct *in vivo* lung metastasis model in order to measure the metastatic capacity of vector control and *IL31RA*-silencing MDA-MB-231 cells. As shown, robust reduction of pulmonary nodules from *IL31RA*-knockdown clones was observed compared with vector control group (Figures 2D,E). All these data indicate that IL31RA is required for breast cancer cell invasion and metastasis.

### Overexpression of IL31RA Promotes Cancer Stem Cell-Like Properties and Cell Motility

To verify the biological roles of IL31RA in breast cancer, we constructed IL31RA stable over-expression clone in MCF-7 luminal breast cancer cells by transfection of lentivirus-based expression plasmid (Figure 3A). As expected, this gene over-expression strongly enhanced the tumorsphere formation ability compared with vector control and parental MCF-7 cells

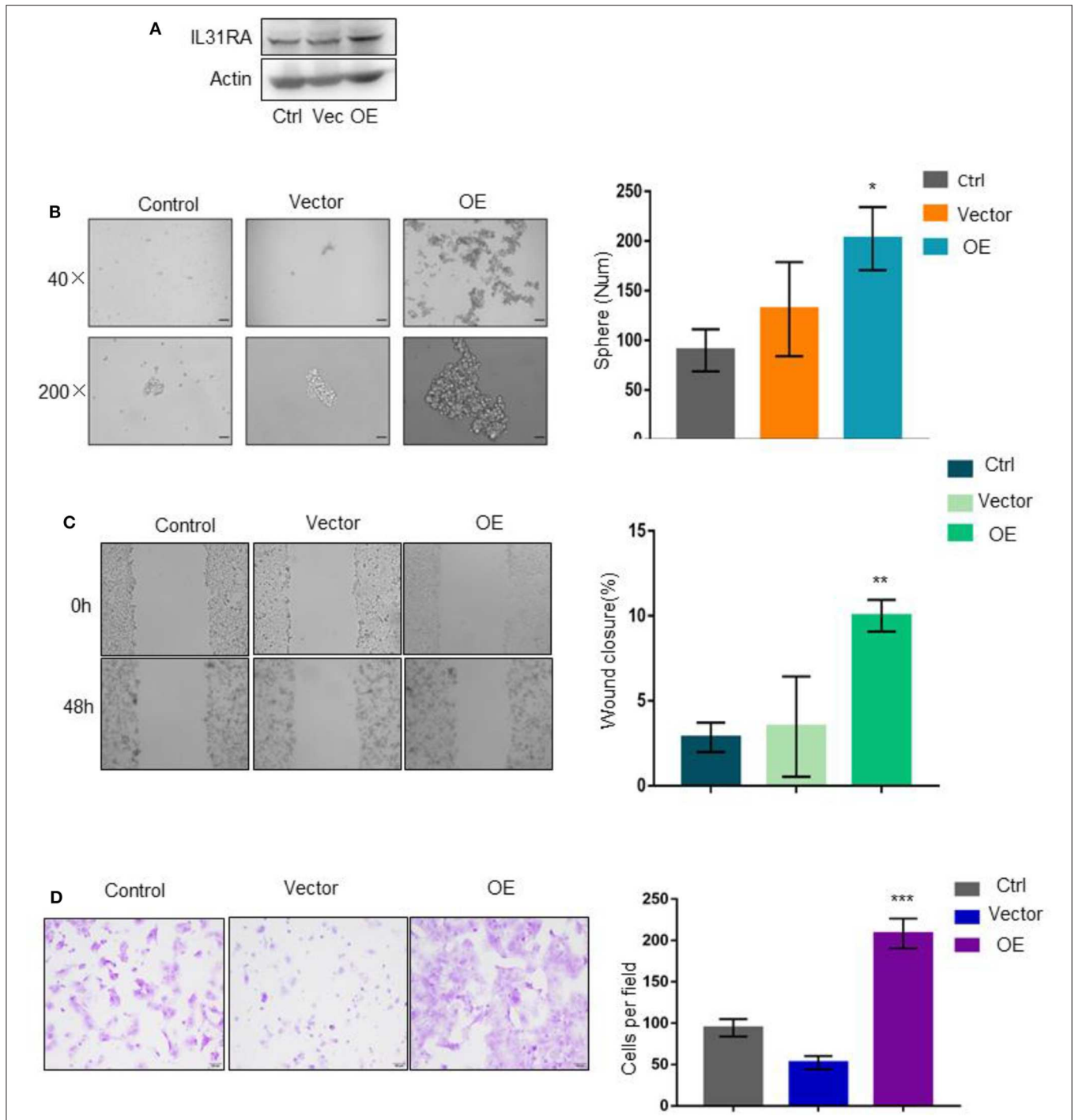
(Figure 3B). Similarly, tumor cell migration (Figure 3C) and invasive ability (Figure 3D) were also robustly stimulated upon IL31RA over-expression. These data further indicate that IL31RA is essential for cancer stem cell-like properties, cell migration, and invasion.

### Loss of IL31RA Abrogates the Oncogenic Roles of IL-31

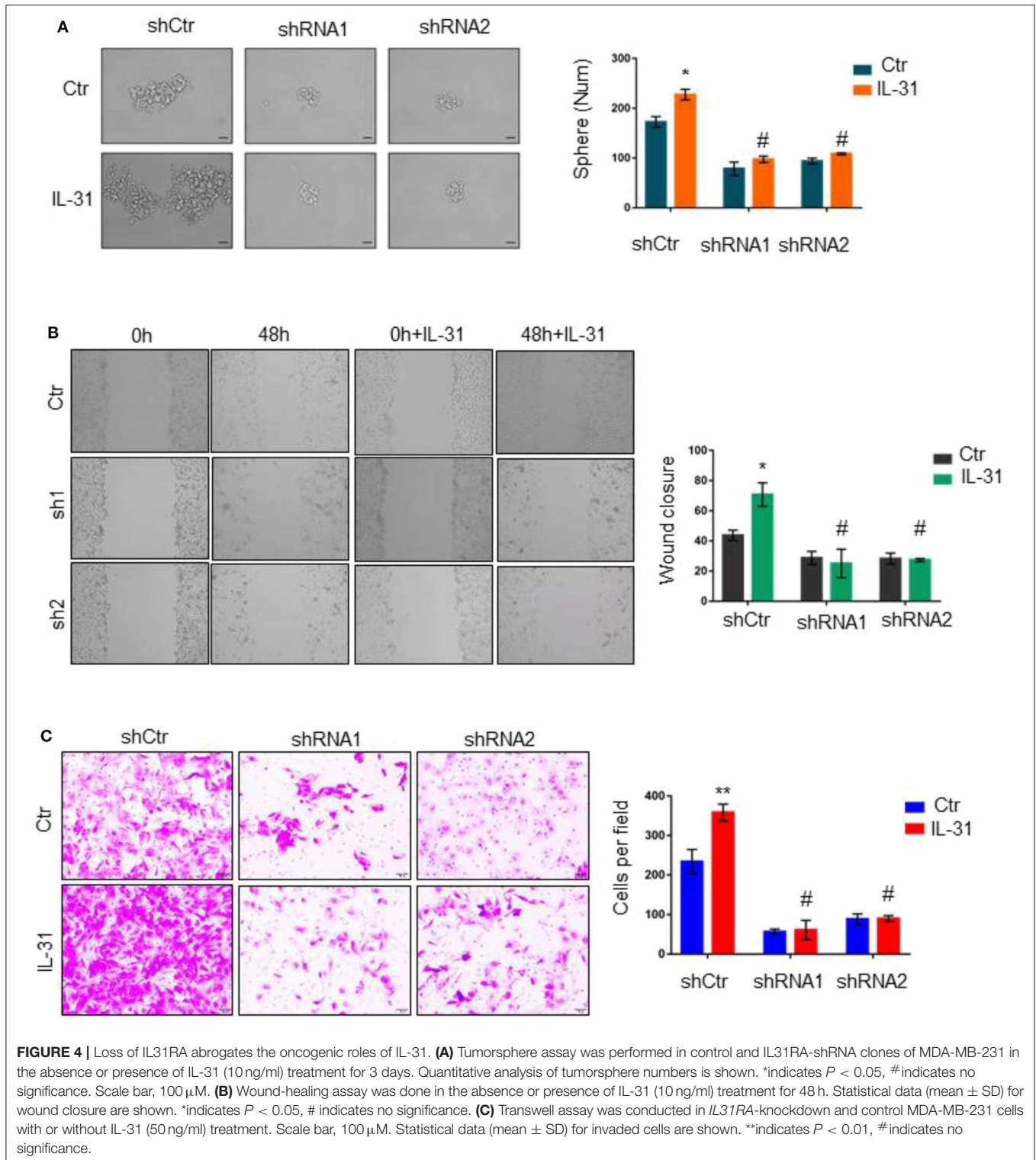
We proceeded to investigate the functional dependence of IL-31 on IL31RA in BLBC progression. Tumorsphere formation ability of shRNA-control and *IL31RA*-knockdown clones of MDA-MB-231 was measured in the absence or presence of IL-31 (10 ng/ml) treatment. IL-31 treatment significantly enhanced the tumorsphere formation in shRNA-control MDA-MB-231 cells, but not in *IL31RA*-knockdown clones (Figure 4A). We also detected the migratory and invasive capacity of these clones with or without IL-31 treatment; similar results were observed that IL-31 induced the migration (Figure 4B) and invasion (Figure 4C) of control MDA-MB-231 cells, however, it completely lost the ability in *IL31RA*-silencing cells, indicating that IL-31 is able to promote BLBC tumor progression and its pro-oncogenic functions are strongly dependent on IL31RA.

### Twist/BRD4 Complex Induces IL31RA Expression

Next, we sought to investigate the expression status of IL31RA in breast cancer. Three datasets from Gene expression omnibus (GEO) that contain gene expression information of breast cancer patients were analyzed; the data indicated that the mRNA level of *IL31RA* is positively correlated to that of *Twist* in breast cancer (Figure 5A). Interestingly, IL31RA was observed to have highest expression level in BLBC compared with other subtypes of breast cancer (Figure 5B). Subsequently, real-time PCR results in a cell line array also revealed that both *Twist* and *IL31RA* are highly expressed in BLBC cells (Figure 5C). Previously we generated stable *Twist*-overexpression clone in luminal breast cancer cell line T47D, and performed cDNA microarray analysis of vector-T47D and *Twist*-T47D cells (GSE53222) (16). This analysis revealed that the mRNA expression of IL31RA was greatly induced by *Twist*, while down-regulated by treatment of BET inhibitor JQ1. Real-time PCR assay showed that *Twist* over-expression robustly stimulated the mRNA level of IL31RA; pre-treatment of JQ1 markedly ameliorated this induction. Western blot results further verified this phenomenon (Figure 5D). Furthermore, knockdown of *Twist* and/or *BRD4* in two BLBC cell lines (MDA-MB-231 and MDA-MB-157) significantly decreased the expression of *IL31RA* (Figure 5E). Similarly, JQ1 treatment strongly down-regulated the protein levels of IL31RA in BLBC cells; meanwhile, JQ1 also inhibited the tyrosine 705 phosphorylation of STAT3 (Figure 5F). These results indicate that *Twist*/BRD4 complex induces the expression of IL31RA.



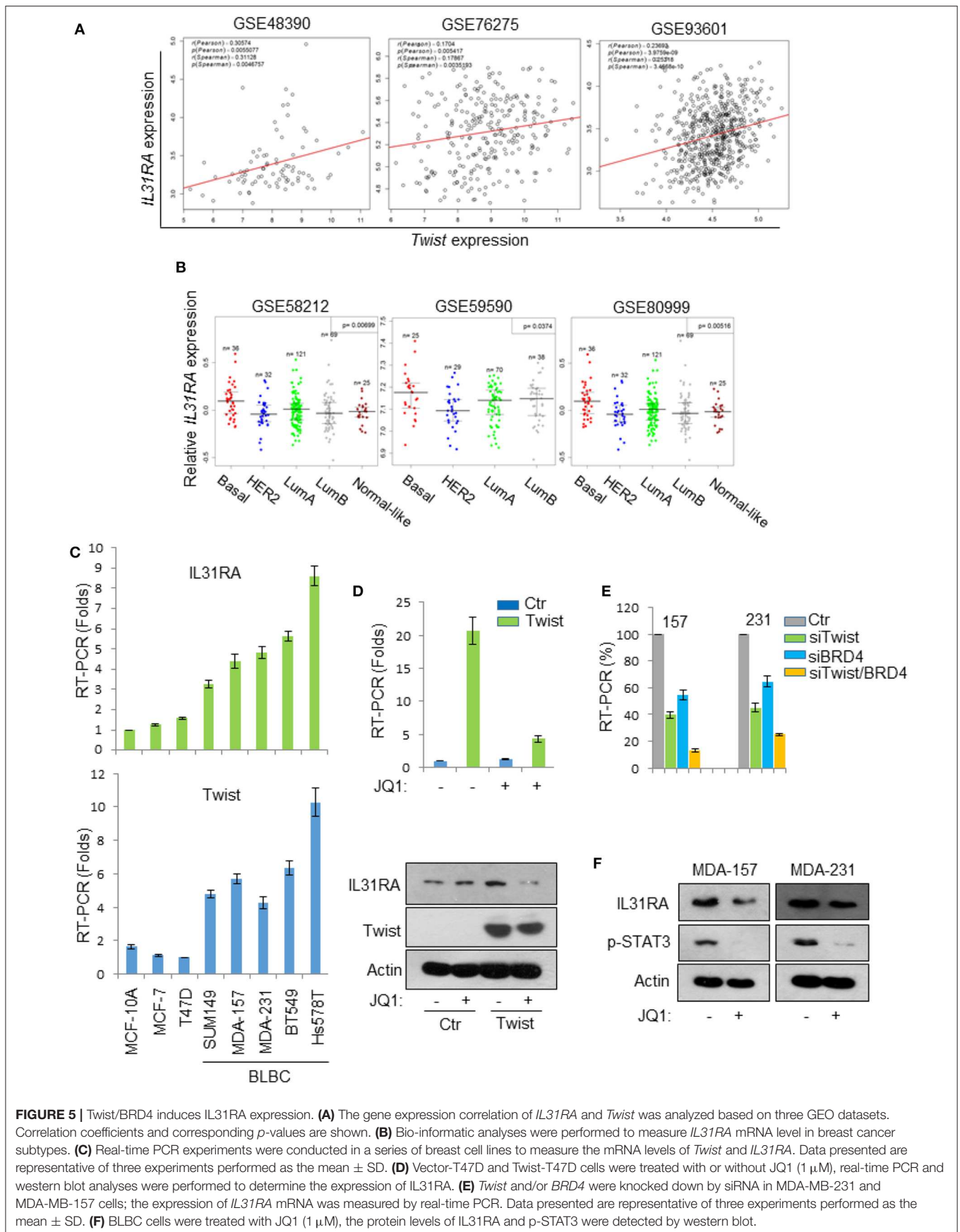
**FIGURE 3 |** Overexpression of IL31RA promotes cancer stem cell-like properties and cell motility. **(A)** Construction of stable IL31RA over-expression clone in MCF-7 cells was determined by western blot. **(B)** Cancer stem cell-like properties were determined by tumorsphere assay in parental MCF-7, vector control and IL31RA-overexpression clone. Typical images of tumorsphere were taken at 40 and 200 magnitudes. Statistical data (mean  $\pm$  SD) for numbers of tumorsphere are shown. \*indicates  $P < 0.05$  (OE vs. Vector). Scale bar, 100  $\mu$ M. **(C)** Cell migration was detected by wound healing assay in parental MCF-7, vector control and IL31RA-overexpression clone for 48 h. Statistical data (mean  $\pm$  SD) for wound closure are shown. \*\*indicates  $P < 0.01$  (OE vs. Vector). **(D)** Cell invasion was observed by transwell assay in parental MCF-7, vector control and IL31RA-overexpression clone. Scale bar, 100  $\mu$ M. Statistical data (mean  $\pm$  SD) for invaded cells are shown. \*\*\*indicates  $P < 0.001$  (OE vs. Vector). Scale bar, 100  $\mu$ M.



## IL31RA Is a Target Gene of Twist/BRD4 Complex

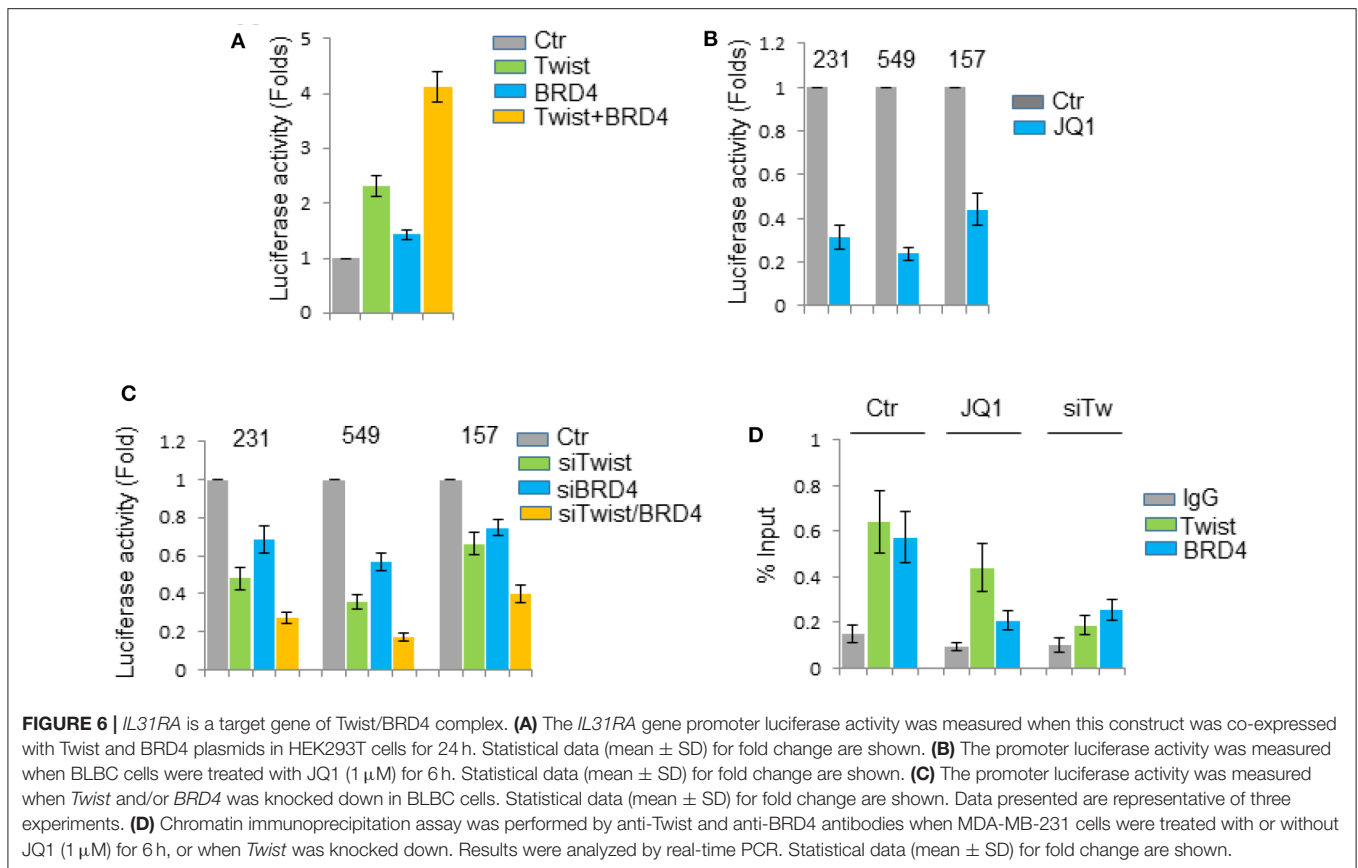
To determine whether *IL31RA* is a direct transcriptional target gene of the Twist/BRD4 complex, we cloned the human

*IL31RA* gene promoter region and generated its promoter-luciferase construct. When this construct was co-expressed with Twist and BRD4 expression plasmids in HEK293T cells, we found that ectopic expression of Twist and/or BRD4



**FIGURE 5 |** Twist/BRD4 induces IL31RA expression. **(A)** The gene expression correlation of *IL31RA* and *Twist* was analyzed based on three GEO datasets. Correlation coefficients and corresponding *p*-values are shown. **(B)** Bio-informatic analyses were performed to measure *IL31RA* mRNA level in breast cancer subtypes. **(C)** Real-time PCR experiments were conducted in a series of breast cell lines to measure the mRNA levels of *Twist* and *IL31RA*. Data presented are representative of three experiments performed as the mean  $\pm$  SD. **(D)** Vector-T47D and Twist-T47D cells were treated with or without JQ1 (1  $\mu$ M), real-time PCR and western blot analyses were performed to determine the expression of *IL31RA*. **(E)** *Twist* and/or *BRD4* were knocked down by siRNA in MDA-MB-231 and MDA-MB-157 cells; the expression of *IL31RA* mRNA was measured by real-time PCR. Data presented are representative of three experiments performed as the mean  $\pm$  SD. **(F)** BLBC cells were treated with JQ1 (1  $\mu$ M), the protein levels of *IL31RA* and p-STAT3 were detected by western blot.





enhanced the *IL31RA* promoter luciferase activity (**Figure 6A**). Knockdown of *Twist* and/or *BRD4* greatly repressed the luciferase activity in BLBC cells (**Figure 6B**). BET inhibitor JQ1, which is able to disrupt the interaction between Twist and BRD4, inhibited the luciferase activity in BLBC cells as well (**Figure 6C**). Moreover, chromatin immunoprecipitation assay showed that Twist and BRD4 proteins associated with the *IL31RA* gene promoter; JQ1 disrupted not only the binding of BRD4 also the interaction of Twist on *IL31RA* promoter; Consistently, silencing of *Twist* weakened the binding of BRD4 to the *IL31RA* gene promoter (**Figure 6D**). All above data indicate that Twist/BRD4 directly regulate *IL31RA* gene transcription.

## DISCUSSION

Plenty of studies have demonstrated the pathogenic role for IL-31 in atopic dermatitis and allergic asthma (17). In recent years, a few literatures implicated the involvement of the IL-31/IL31RA axis in cancer. The expression of IL-31 and IL31RA was found to be higher in lymph nodes from follicular lymphoma patients with grade IIIa compared with grade I/II. The elevation of IL-31/IL31RA signaling was indicated to be responsible for primary follicular lymphoma cell proliferation (18). Patients with endometrial carcinoma displayed high serum levels of IL-31, which may represent promising disease biomarkers (19). Intriguingly, the pathological roles of IL-31/IL31RA signaling in tumor progression remain largely unknown. Owing to the

high rate of early-stage metastasis and lack of effective targeted therapies, it is urgent to reveal the underlying signaling molecules that determine the progression and metastasis of basal-like breast cancer cells. Our results show that the expression level of *IL31RA* is up-regulated in BLBC in comparison with other breast cancer subtypes. Silencing of *IL31RA* suppresses the cancer stem cell-like properties, migration, and invasion of BLBC cells *in vitro* as well as tumor growth and metastasis *in vivo*. These data suggest that any chemicals or antibodies that target IL-31/IL31RA axis may confer therapeutic benefit to treatment of BLBC. Recently, CIMM331 humanized anti-human IL31RA antibody was tested in a phase I/Ib study for patients of atopic dermatitis (20). We will try this antibody or screen other small inhibitors for blockade of IL-31 signaling and treatment of BLBC.

These findings also identify the transcription regulation manner of *IL31RA* gene. Our previous study indicated that the Twist/BRD4 complex represents a druggable target for treating BLBC (16). BET-specific BD inhibitors disrupt the Twist-BRD4 interaction, leading to inhibition of tumorigenicity of BLBC cells *in vitro* and *in vivo*. However, BET inhibitors are able to block the interaction of BRD4 with several other acetylated transcriptional factors or inhibit the biological functions of other BET family members, such as BRD2 and BRD3. Therefore, it is rational to develop the ways for inhibition of specific downstream signaling of Twist/BRD4 complex. Studies of *Drosophila* mesoderm development indicated that Twist is a master transcriptional factor which governs multiple gene transcriptional activation (21). Our microarray analysis has

implicated that *IL31RA* is transcriptionally active in Twist-overexpressing cells, suggesting it is likely a target gene of Twist (16). In this study, by promoter luciferase and chromatin immunoprecipitation evidences, we identify that *IL31RA* transcription is directly modulated by Twist/BRD4 complex. Collectively, these data implicate that BLBC cells might employ Twist/BRD4 transcription complex to induce *IL31RA* expression, facilitating the utilization of IL-31 pro-oncogenic signaling and promoting the tumorigenicity of BLBC. Our study may explain how tumor cells utilize the pro-oncogenic signals derived from inflammatory microenvironment and further clarify the working mechanism of Twist/BRD4 complex.

## DATA AVAILABILITY STATEMENT

The analyzed data sets generated during the present study are available from the corresponding author on reasonable request.

## REFERENCES

- Polyak K. Heterogeneity in breast cancer. *J Clin Invest.* (2011) 121:3786–8. doi: 10.1172/JCI60534
- Denkert C, Liedtke C, Tutt A, von Minckwitz G. Molecular alterations in triple-negative breast cancer—the road to new treatment strategies. *Lancet.* (2017) 389:2430–42. doi: 10.1016/S0140-6736(16)32454-0
- Harbeck N, Gnant M. Breast cancer. *Lancet.* (2017) 389:1134–50. doi: 10.1016/S0140-6736(16)31891-8
- Matsumoto H, Koo SL, Dent R, Tan PH, Iqbal J. Role of inflammatory infiltrates in triple negative breast cancer. *J Clin Pathol.* 68:506–10. doi: 10.1136/jclinpath-2015-202944
- Marotta LL, Almendro V, Marusyk A, Shipitsin M, Schemme J, Walker SR, et al. The JAK2/STAT3 signaling pathway is required for growth of CD44(+)CD24(-) stem cell-like breast cancer cells in human tumors. *J Clin Invest.* (2011) 121:2723–35. doi: 10.1172/JCI44745
- Burugu S, Asleh-Aburaya K, Nielsen TO. Immune Infiltrates in the Breast Cancer Microenvironment: Detection, Characterization and Clinical Implication. *Breast Cancer.* (2017) 24:3–15. doi: 10.1007/s12282-016-0698-z
- Gangemi S, Quartuccio S, Casciaro M, Trapani G, Minciullo PL, Imbalzano E. Interleukin 31 and skin diseases: a systematic review. *Allergy Asthma Proc.* (2017) 38:401–8. doi: 10.2500/aap.2017.38.4080
- Rabenhorst A, Hartmann K. Interleukin-31: a novel diagnostic marker of allergic diseases. *Curr Allergy Asthma Rep.* (2014) 14:423. doi: 10.1007/s11882-014-0423-y
- Dillon SR, Sprecher C, Hammond A, Bilsborough J, Rosenfeld-Franklin M, Presnell SR, et al. Interleukin 31, a cytokine produced by activated T cells, induces dermatitis in mice. *Nat Immunol.* (2004) 5:752–60. doi: 10.1038/ni1084
- Feld M, Shpacovitch VM, Fastrich M, Cevikbas F, Steinhoff M. Interferon-gamma induces upregulation and activation of the interleukin-31 receptor in human dermal microvascular endothelial cells. *Exp Dermatol.* (2010) 19:921–3. doi: 10.1111/j.1600-0625.2010.01147.x
- Shi J, Cao J, Zhou BP. Twist-BRD4 complex: potential drug target for basal-like breast cancer. *Curr Pharmaceut Design.* (2015) 21:1256–61. doi: 10.2174/1381612821666141211153853
- Yang J, Mani SA, Donaher JL, Ramaswamy S, Itzykson RA, Come C, et al. Twist, a master regulator of morphogenesis, plays an essential role in tumor metastasis. *Cell.* (2004) 117:927–39. doi: 10.1016/j.cell.2004.06.006
- Eckert MA, Lwin TM, Chang AT, Kim J, Danis E, Ohno-Machado L, et al. Twist1-induced invadopodia formation promotes tumor metastasis. *Cancer Cell.* (2011) 19:372–86. doi: 10.1016/j.ccr.2011.01.036

## ETHICS STATEMENT

The animal study was reviewed and approved by Animal Care and Use Committee of Southern Medical University.

## AUTHOR CONTRIBUTIONS

JS conceived and designed the project, and wrote the manuscript. YH, XZ, WP, and FT carried out the experiments. LL gave advice on the manuscript.

## FUNDING

This research was supported by National Natural Science Foundation of China (81672629, 81872168), and Science and Technology Program of Guangzhou, China (201707010331) to JS.

- Yang MH, Hsu DS, Wang HW, Wang HJ, Lan HY, Yang WH, et al. Bmi1 is essential in Twist1-induced epithelial-mesenchymal transition. *Nat Cell Biol.* (2010) 12:982–92. doi: 10.1038/ncb2099
- Mani SA, Guo W, Liao MJ, Eaton EN, Ayyanan A, Zhou AY, et al. The epithelial-mesenchymal transition generates cells with properties of stem cells. *Cell.* (2008) 133:704–15. doi: 10.1016/j.cell.2008.03.027
- Shi J, Wang Y, Zeng L, Wu Y, Deng J, Zhang Q, et al. Disrupting the interaction of BRD4 with diacetylated Twist suppresses tumorigenesis in basal-like breast cancer. *Cancer Cell.* (2014) 25:210–25. doi: 10.1016/j.ccr.2014.01.028
- Ip WK, Wong CK, Li ML, Li PW, Cheung PF, Lam CW. Interleukin-31 induces cytokine and chemokine production from human bronchial epithelial cells through activation of mitogen-activated protein kinase signalling pathways: implications for the allergic response. *Immunology.* (2007) 122:532–41. doi: 10.1111/j.1365-2567.2007.02668.x
- Ferretti E, Tripodo C, Pagnan G, Guarnotta C, Marimpetri D, Corrias MV, et al. The interleukin (IL)-31/IL-31R axis contributes to tumor growth in human follicular lymphoma. *Leukemia.* (2015) 29:958–67. doi: 10.1038/leu.2014.291
- Zeng X, Zhang Z, Gao QQ, Wang YY, Yu XZ, Zhou B, et al. Clinical significance of serum interleukin-31 and interleukin-33 levels in patients of endometrial cancer: a case control study. *Dis Markers.* (2016) 2016:9262919. doi: 10.1155/2016/9262919
- Ferretti E, Corcione A, Pistoia V. The IL-31/IL-31 receptor axis: general features and role in tumor microenvironment. *J Leukoc Biol.* (2017) 102:711–7. doi: 10.1189/jlb.3MR0117-033R
- Sandmann T, Girardot C, Brehme M, Tongprasit W, Stolz V, Furlong EE. A core transcriptional network for early mesoderm development in *Drosophila melanogaster*. *Genes Dev.* (2007) 21:436–49. doi: 10.1101/gad.150907

**Conflict of Interest:** The authors declare that the research was conducted in the absence of any commercial or financial relationships that could be construed as a potential conflict of interest.

Copyright © 2020 He, Zhang, Pan, Tai, Liang and Shi. This is an open-access article distributed under the terms of the Creative Commons Attribution License (CC BY). The use, distribution or reproduction in other forums is permitted, provided the original author(s) and the copyright owner(s) are credited and that the original publication in this journal is cited, in accordance with accepted academic practice. No use, distribution or reproduction is permitted which does not comply with these terms.