



The Prognostic Role of Ribosomal Protein S6 Kinase 1 Pathway in Patients With Solid Tumors: A Meta-Analysis

Shuo Zhang^{1†}, Binwu Hu^{1†}, Xiao Lv¹, Songfeng Chen², Weijian Liu¹ and Zengwu Shao^{1*}

¹ Department of Orthopaedics, Union Hospital, Tongji Medical College, Huazhong University of Science and Technology, Wuhan, China, ² Department of Orthopaedic Surgery, The First Affiliated Hospital of Zhengzhou University, Zhengzhou, China

OPEN ACCESS

Edited by:

Michael Breitenbach,
University of Salzburg, Austria

Reviewed by:

Alexander Egle,
Paracelsus Medizinische
Privatuniversität, Salzburg, Austria
Bettina Jansko,
Salzburger Landeskliniken, Austria

*Correspondence:

Zengwu Shao
szwpro@163.com

[†]These authors have contributed
equally to this work

Specialty section:

This article was submitted to
Molecular and Cellular Oncology,
a section of the journal
Frontiers in Oncology

Received: 24 December 2018

Accepted: 26 April 2019

Published: 14 May 2019

Citation:

Zhang S, Hu B, Lv X, Chen S, Liu W
and Shao Z (2019) The Prognostic
Role of Ribosomal Protein S6 Kinase
1 Pathway in Patients With Solid
Tumors: A Meta-Analysis.
Front. Oncol. 9:390.
doi: 10.3389/fonc.2019.00390

Background: Recent studies supported the predictive role of ribosomal protein S6 kinase 1 (S6K1), phosphorylated S6K1 (p-S6K1), and phosphorylated ribosomal protein S6 (p-S6) for the outcome of cancer patients. However, inconsistent results were acquired across different researches. To comprehensively and quantitatively elucidate their prognostic significance in solid malignancies, the current meta-analysis was carried out utilizing the results of clinical studies.

Methods: We conducted the literature retrieval by searching PubMed, Web of Science, EMBASE, and Cochrane library to identify eligible publications. Data were collected from included articles to calculate pooled overall survival (OS), disease-free survival (DFS), recurrence-free survival (RFS), and progression-free survival (PFS). Hazard ratios (HRs) with 95% confidence intervals (CIs) served as appropriate parameters to assess prognostic significance.

Results: Forty-four original studies were included, of which 7 studies were analyzed for S6K1, 24 for p-S6K1, and 16 for p-S6. The overexpression of p-S6K1 was significantly associated with poorer prognosis of solid tumor patients in OS (HR = 1.706, 95%CI: 1.369–2.125, $p < 0.001$), DFS (HR = 1.665, 95%CI: 1.002–2.768, $p = 0.049$). However, prognostic role of p-S6K1 in RFS and PFS was not found. The result also revealed that S6K1 and p-S6 were significantly associated with reduced OS (HR = 1.691, 95%CI: 1.306–2.189, $p < 0.001$; HR = 2.019, 95%CI: 1.775–2.296, $p < 0.001$, respectively).

Conclusions: The present meta-analysis demonstrated that elevated expression of S6K1, p-S6K1, or p-S6 might indicate worse prognosis of patients with solid tumors, and supported a promising clinical test to predict solid tumor prognosis based on the level of S6K1 pathway.

Keywords: S6 kinase 1, ribosomal protein S6, solid tumors, prognosis, meta-analysis

INTRODUCTION

In view of high morbidity and mortality all over the world, cancer is well-documented as a global health concern resulting in enormous socioeconomic costs (1–3). Recently, the progression of early diagnosis and the development of various treatments dramatically improved the outcomes of most malignancies (4, 5). However, the prognosis of cancer patients is still unsatisfactory. On the bright side, molecular analysis of cancer tissues greatly augmented the conventional clinical-pathologic paradigm, and then allowed clinical oncology to usher in a new era of molecular medicine (6, 7). Therefore, further researches are in urgent need to explore applicable biomarkers to predict the prognosis of malignancies or work as therapeutic targets.

Dysregulation of the mammalian target of rapamycin (mTOR) pathway components has been reported in various cancers (8–11), and previous meta-analyses have revealed that the mTOR pathway proteins could predict unfavorable cancer prognosis (12, 13). S6K1 is widely accepted as a critical downstream point of mTOR pathway (14). Several hypothetical patterns have been put forward for the regulation of S6K1 phosphorylation, which endows S6K1 with biological function. In a widely accepted model, the mTOR complex 1 (mTORC1) phosphorylates S6K1 hydrophobic motif at Thr389, and the process could be inhibited by rapamycin treatment (14). Other pathways are also supposed to participate in the activation of S6K1, including phosphoinositide 3-kinase (PI3K) signaling (15), mitogen activated protein kinase (MAPK) signaling (16), and even S6K1 autophosphorylation (17). S6K1 plays key roles in diverse cellular processes, including mRNA processing, protein synthesis, cell growth, and homeostasis (18). Accordingly, it was reported that dysregulation of S6K1 was linked to multiple pathologies, especially malignant diseases (14, 19).

Ribosomal protein S6, which serves as a component of 40S ribosomal subunit, is one of the best-characterized kinase effector of p-S6K1 and plays a fundamental role in the control of cell survival and proliferation (14). The phosphorylation of all five sites of S6 (Ser236, Ser235, Ser240, Ser244, and Ser247) could be carried out by S6K1. When phosphorylated by S6 kinases, p-S6 increases the selective translation of a specific subclass of mRNAs with an oligopyrimidines tract at the 5' untranslated

region (5'TOP mRNA) (20). Relevant evidence has been provided for the participation of p-S6 in pancreatic cancer development (21). Besides phosphorylating S6, S6K1 also participates in the regulation of translation initiation and elongation in other ways (22), including activating eukaryotic initiation factor 3 (eIF3) (23), and eukaryotic translation initiation factor 4B (eIF4B) (24).

Previous studies have shown that S6K1, p-S6K1, and p-S6 are abnormally activated in a wide range of cancer types, potentially in relation to prognosis. However, whether S6K1, p-S6K1, and p-S6 could be regarded as prognostic biomarkers and whether the high or low expression of S6K1 pathway is more adverse for the prognosis of solid tumors remains unknown. In addition, to our knowledge, there is no previous comprehensive meta-analysis about the prognostic significance of S6K1 pathway. Therefore, the present meta-analysis was conducted aiming at evaluating the prognostic value of S6K1 pathway in patients with solid tumors.

MATERIALS AND METHODS

Search Strategy

Two researchers (SZ and BH) performed a systematic literature search in PubMed, Web of Science, EMBASE, and Cochrane library to obtain relevant articles up to November 1, 2018. The search query was “S6K1 OR p70S6K OR ribosomal protein S6 kinase OR phosphorylated S6K1 OR p-S6K1 OR phosphorylated p70S6K OR p-p70S6K OR S6 OR ribosomal protein S6” AND “cancer OR tumor” AND “survival OR prognosis.” The reference lists of included studies and relevant review articles were also retrieved for eligible articles.

Study Selection

The articles were included on condition that they met all the following criteria. (1) Studies must contain the exploration of the association between the expression levels of S6K1, p-S6K1, or p-S6 and overall survival (OS), disease-free survival (DFS), recurrence-free survival (RFS) or progression-free survival (PFS) in any type of solid tumor. (2) The patients had to be divided into high or positive expression group and low or negative expression group according to the expression level of S6K1, p-S6K1, or p-S6. (3) Sufficient data was shown in publications for us to obtain hazard ratios (HRs) and 95% confidence intervals (CIs). (4) In consideration of the heterogeneity of different evaluation and cut-off methods for protein expression, only studies assessing tumor tissues by immunohistochemistry (IHC) staining were included but studies performing western blot (WB), reverse phase protein array (RPPA), enzyme linked immunosorbent assay (ELISA) or polymerase chain reaction (PCR) were excluded in the current meta-analysis.

Studies not in English or not on humans were excluded. For the studies with duplicate data, only the most recent publication was included.

Abbreviations: ESCC, esophageal squamous cell carcinoma; GC, gastric cancer; CRC, colorectal cancer; HCC, hepatocellular carcinoma; ICC, intrahepatic cholangiocarcinoma; NPC, nasopharyngeal carcinoma; NSCLC, non-small cell lung cancer; RCC, renal cell carcinoma; BUC, bladder urothelial carcinoma; BC, breast cancer; OC, ovarian cancer; OS, osteosarcoma; SS, synovial sarcoma; UPS, undifferentiated pleomorphic sarcoma; MPNST, malignant peripheral nerve sheath tumor; MPM, malignant pleural mesothelioma; SCC, squamous cell carcinoma; NET, neuroendocrine tumor; FIGO, International Federation of Gynecology and Obstetrics; UICC, Union for International Cancer Control; AJCC, American Joint Committee on Cancer; OS, overall survival; DFS, disease-free survival; RFS, recurrence-free survival; PFS, progression-free survival; EFS, event-free survival; ROC, receiver-operating characteristic; IRS, immunoreactive score; NOS, Newcastle-Ottawa Scale; NS, not stated; U, univariate analysis; M, multivariate analysis; H-score, HistoScore according to IHC.

Data Extraction and Quality Assessment

Two investigators (SZ and BH) reviewed all eligible studies and extracted study characteristics carefully, including author's name, publication year, country, clinicopathological data, phosphorylation site of p-S6K1 or p-S6, study design, treatment information and follow-up duration. In the current analysis, event-free survival (EFS) was defined as a term free of disease, recurrence or progression. We obtained the reported HRs and 95% CIs directly from the publications or from Kaplan-Meier curves by using Engauge Digitizer version 9.8.

The methodological quality of the included researches was assessed by Newcastle-Ottawa Scale (NOS) especially for cohort studies. NOS ranges from 0 to 9, involving selections of exposed cohort, comparability of cohorts and outcome assessment. Researches scoring 6 or more out of 9 were defined as high quality. Rating of studies was carried out by two independent raters (WL and SC) with disagreements resolved by a third rater (BH).

Data Analysis

Log-transformed HRs with 95% CIs were pooled by Stata software statistical software version 14.0 (Stata Corporation, College Station, TX, USA). The heterogeneity across the studies was measured by Cochran Q test and Higgins I^2 statistic. Fixed-effect model (Mantel-Haenszel) was performed if heterogeneity was not observed ($I^2 < 50\%$); otherwise ($I^2 \geq 50\%$), random-effect model (DerSimonian and Laird) was considered to be more appropriate. An HR > 1 indicates a poorer prognosis in the patients with biomarker-overexpressed tumors. In addition, we conducted sensitivity analyses to inspect the stability of all summarized outcomes and estimated the potential for publication bias through Begg's test and Egger's linear regression test (25). Galbraith plot was considered appropriate to further explore the sources of heterogeneity and the trim and fill method would be used in the situation of obvious publication bias (26, 27). Due to the limited number of included articles, the subgroup analysis and meta-regression analysis exploring the source of heterogeneity were only conducted in the OS analysis of p-S6K1. All p -values were two-sided, and $P < 0.05$ was considered statistically significant.

RESULT

Study Characteristics

Article retrieval flow chart was showed in **Figure 1**. Among 44 eligible articles (28–71) in this meta-analysis (**Table 1**), there were 7 for S6K1, 24 for p-S6K1, and 16 for p-S6. The characteristics of included studies are shown in **Supplementary Table 1**. In summary, (1) the sample size ranges from 30 to 1072; (2) the year of publication ranges from 2004 to 2018; (3) the follow-up duration ranges from 25 to 291 months; (4) 18 of these studies were conducted in western countries, while 25 in Asia and 1 in Africa; (5) HRs with 95% CIs were obtained directly from all but six included publications; (6) well-defined cut-off values were stated in each included study. Histochemistry (H-score) according to staining intensity and positive proportion by IHC was widely applied.

Prognostic Value of p-S6K1 in Solid Tumors Overall Survival (OS)

Pooled analyses of 18 studies involving 2,819 patients showed that p-S6K1 overexpression was significantly associated with worse OS (HR = 1.706, 95%CI: 1.369–2.125, $p < 0.001$) (**Table 2; Figure 2**). Significant inter-study heterogeneity (Cochrane Q, $p < 0.001$; $I^2 = 83.8\%$) asked for a random-effect model. We further conducted subgroup analyses and meta-regression analysis to explore the source of heterogeneity by factors of sample size (≥ 150 and < 150), NOS score (< 7 and ≥ 7), region (western country and eastern country), follow-up period (≥ 100 months and < 100 months), source of HRs (HRs obtained directly and indirectly) and preoperative treatment (no and yes or unclear). Two subgroup factors altered the significant relationship between p-S6K1 expression and OS in the six factors above (**Table 3**) (**Figure 3**). However, meta-regression analysis indicated that these six factors were not the source of heterogeneity.

Furthermore, pooled HR of 12 researches performing Cox multivariate analyses revealed high p-S6K1 expression could serve as an independent prognostic predictor for reduced OS of patients with solid malignancies (HR = 1.951, 95%CI: 1.357–2.804, $p < 0.001$) (**Table 2; Supplementary Figure 1**).

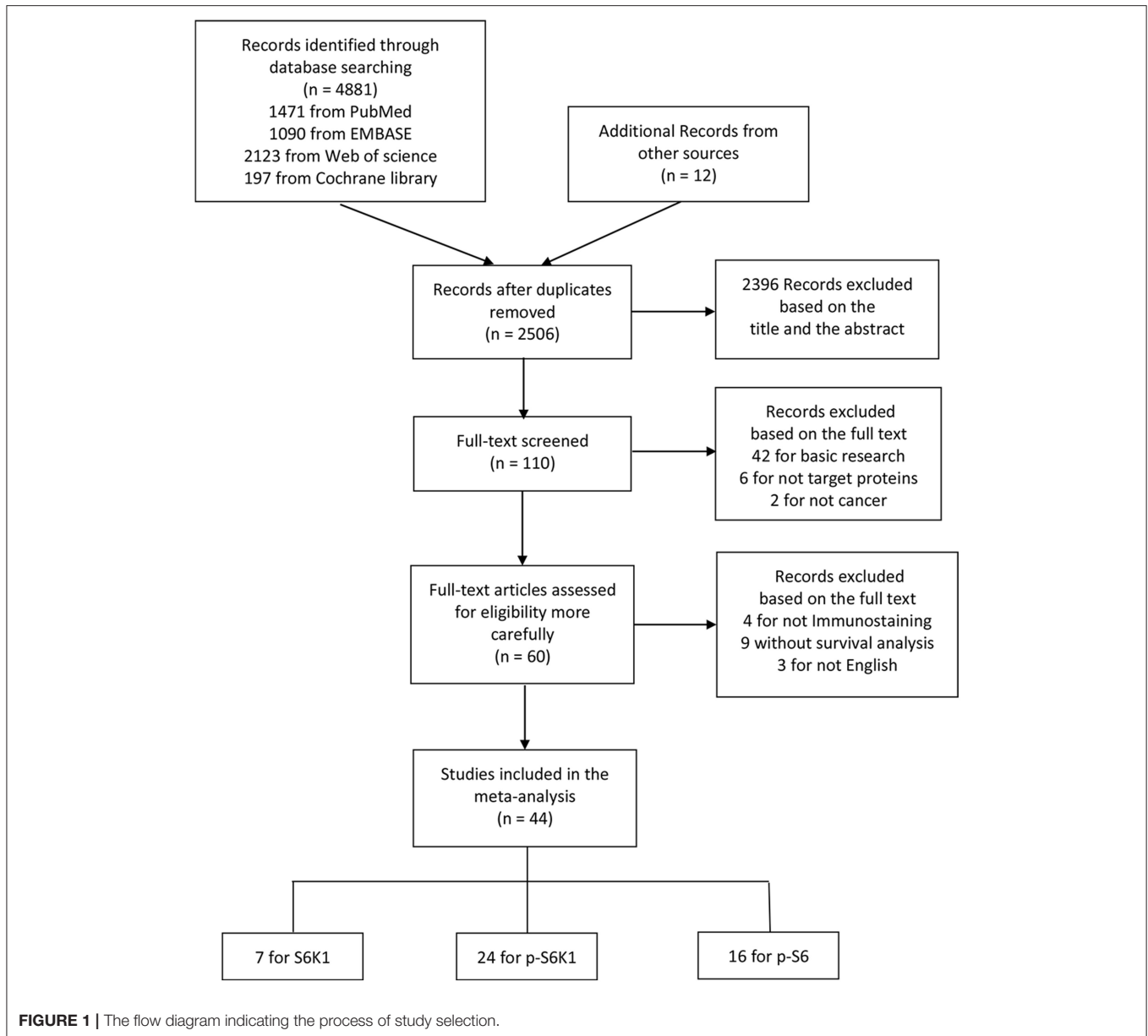
We further evaluated the prognostic value of p-S6K1 in certain types of cancer (**Table 2**). It was found that p-S6K1 predicted poor prognosis of esophageal squamous cell carcinoma (ESCC) (HR = 2.116, 95%CI: 1.481–3.022, $p < 0.001$) (**Supplementary Figure 2A**), non-small cell lung cancer (NSCLC) (HR = 4.515, 95%CI: 1.516–13.450, $p = 0.007$) (**Supplementary Figure 2B**) and nasopharyngeal carcinoma (NPC) (HR = 1.535, 95%CI: 1.100–2.141, $p = 0.012$) (**Supplementary Figure 2C**), but not breast cancer (BC) (HR = 1.081, 95%CI: 0.649–1.801, $p = 0.766$) (**Supplementary Figure 2D**).

Disease-Free Survival (DFS), Recurrence-Free Survival (RFS), and Progression-Free Survival (PFS)

Further, the impact of elevated expression of p-S6K1 on the prognosis of solid tumors was explored in 3 studies with 493 cases for DFS, 4 studies with 425 cases for PFS, and 4 studies with 557 cases for RFS, respectively. Random effect model was suitable for the analyses of DFS (Cochrane Q, $p = 0.034$; $I^2 = 70.5\%$), PFS (Cochrane Q, $p = 0.001$; $I^2 = 84.8\%$) and RFS (Cochrane Q, $p < 0.001$; $I^2 = 86.0\%$) owing to obvious heterogeneity. The consequence displayed that p-S6K1 was significantly associated with reduced DFS (HR = 1.665, 95%CI: 1.002–2.768, $p = 0.049$) (**Supplementary Figure 3A**), but not PFS (HR = 1.472, 95%CI: 0.596–3.632, $p = 0.402$) (**Supplementary Figure 3B**) and RFS (HR = 0.722, 95%CI: 0.308–1.693, $p = 0.454$) (**Supplementary Figure 3C**) in patients with solid malignancies (**Table 2**).

Sensitivity Analysis and Publication Bias

For the analysis of OS, we evaluated the effect of a certain study on the summarized outcomes through sensitivity analysis. The results showed that the elimination of any research did not alter the original statistical significance, further confirming



the stability and credibility of the eventual results (Figure 4A). In addition, publication bias in the analysis of the association between p-S6K1 expression and OS was estimated by Begg's test and Egger's linear regression test. Publication bias was not detected by Begg's test ($p = 0.596$) (Figure 4B). Inversely, Egger's linear regression test proved that there was significant publication bias ($p < 0.001$) (Figure 4C). To further explore the impact of potential publication bias on pooled results, we conducted trim and fill analysis, which is a funnel-plot-based method for testing and adjusting the publication bias in meta-analysis. Trim and fill analysis demonstrated that seven studies investigating the relationship between p-S6K1 and OS of solid tumors were potentially unpublished or unavailable (Figure 4D). Moreover, filled result (HR = 1.300, 95% CI: 1.077–1.568, $p = 0.006$) sustained the statistical significance.

Prognostic Value of S6K1 in Solid Tumors

Pooled analyses were conducted to estimate the prognostic value of S6K1 on six researches comprising 967 patients for OS and four researches involving 1,059 cases for EFS, respectively. Fixed effect model was preferred for the analysis of OS (Cochrane Q, $p = 0.276$; $I^2 = 20.9\%$) and EFS (Cochrane Q, $p = 0.484$; $I^2 = 0.0\%$). The results revealed S6K1 overexpression to be significantly associated with worse OS (HR = 1.691, 95%CI: 1.306–2.189, $p < 0.001$) (Figure 5A) and EFS (HR = 2.074, 95%CI: 1.488–2.890, $p < 0.001$) in patients with solid tumors (Table 2).

Prognostic Value of p-S6 in Solid Tumors

The prognostic value of p-S6 was reported in sixteen observational studies, of which 11 were analyzed for OS, 3 for DFS, 3 for PFS, and 4 for RFS. P-S6 was found significantly

TABLE 1 | Included studies.

Target protein	OS		EFS		
	M	Not M	DFS	PFS	RFS
S6K1	(33, 39, 59)	(28, 35, 71)	(28, 33)	(71)	(51)
p-S6K1	(34–36, 38, 41, 50, 55, 59, 65, 67, 68, 70)	(30, 31, 46, 54, 60, 71)	(36, 55, 56)	(49, 58, 60, 71)	(47, 48, 54, 57)
p-S6	(32, 37, 62, 64, 70)	(42, 44, 45, 52, 61, 63)	(29, 44, 66)	(40, 43, 62)	(43, 53, 63, 69)

M, multivariate analysis.

TABLE 2 | Pooled HRs, heterogeneity and publication bias for OS, DFS, PFS, RFS, and EFS in cancer patients with abnormal expression level of S6K1, p-S6K1, and p-S6.

Factor	No. of studies	Model	Pooled HR (95%CI)	P	Heterogeneity		Publication bias	
					I ²	P	P of Begg's test	P of Egger's test
S6K1								
OS	6	F	1.69 (1.31, 2.19)	<0.001*	20.9%	0.276	0.133	0.135
OS from M	3	R	1.99 (0.82, 4.85)	0.128	77.8%	0.011	–	–
EFS	4	F	2.07 (1.49, 2.89)	<0.001*	0.00%	0.484	–	–
p-S6K1								
OS	18	R	1.71 (1.37, 2.12)	<0.001*	83.8%	<0.001	0.596	<0.001
OS from M	12	R	1.95 (1.36, 2.80)	<0.001*	86.8%	<0.001	–	–
OS for ESCC	2	F	2.12 (1.48, 3.02)	<0.001*	0.0%	0.732	–	–
OS for NSCLC	3	R	4.52 (1.52, 13.45)	0.007*	88.3%	<0.001	–	–
OS for NPC	2	F	1.53 (1.10, 2.14)	0.012*	0.0%	0.725	–	–
OS for BC	3	R	1.08 (0.65, 1.80)	0.766	72.1%	0.028	–	–
DFS	3	R	1.67 (1.00, 2.77)	0.049*	70.5%	0.034	–	–
PFS	4	R	1.47 (0.60, 3.63)	0.402	84.8%	0.001	–	–
RFS	4	R	0.72 (0.31, 1.69)	0.454	86.0%	<0.001	–	–
p-S6								
OS	11	F	2.02 (1.78, 2.30)	<0.001*	17.7%	0.275	0.592	0.340
OS from M	5	F	1.78 (1.49, 2.11)	<0.001*	23.0%	0.268	–	–
DFS	3	R	1.54 (0.70, 3.41)	0.287	76.5%	0.014	–	–
PFS	3	F	2.09 (1.10, 3.98)	0.024*	0.0%	0.743	–	–
RFS	4	F	2.21 (1.52, 3.23)	<0.001*	46.9%	0.130	–	–

M, multivariate analysis; R, random-model; F, fixed-model. * $p < 0.05$.

associated with worse OS (HR = 2.019, 95%CI: 1.775–2.296, $p < 0.001$) (**Figure 5B**), PFS (HR = 2.092, 95%CI: 1.100–3.979, $p = 0.024$) (**Supplementary Figure 4B**) and RFS (HR = 2.214, 95%CI: 1.518–3.229, $p < 0.001$) (**Supplementary Figure 4C**). Statistical significance of p-S6 in DFS was not found in the current meta-analysis (HR = 1.540, 95%CI: 0.696–3.409, $p = 0.287$) (**Table 2**; **Supplementary Figure 4A**).

DISCUSSION

S6K1 pathway was widely reported to be dysregulated in various solid malignancies, and S6K1, p-S6K1, and p-S6 were considered as potential prognostic biomarkers in cancer patients (14, 18). However, negative or even opposite results were also acquired (72). Here, the purpose of this meta-analysis was to provide a reliable and comprehensive summary of the prognostic value of

S6K1 pathway dysfunction in solid tumors and to explore its clinical significance.

Through the systematic analysis of 44 independent clinical studies, we found that elevated expression levels of S6K1, p-S6K1, or p-S6 were significantly related to poorer OS in patients with solid tumors. In the subgroup analyses of prognostic value of p-S6K1, two of all six subgroup factors altered the statistical significance. However, the sources of heterogeneity were not ascertained by meta-regression analysis. Furthermore, by pooling HRs from multivariate analysis, we found that p-S6K1 overexpression could act as an independent risk factor for OS in patients with solid tumors. The prognostic value of p-S6K1 in four certain types of tumor was further evaluated. Our results revealed that the prognostic significance of p-S6K1 in OS existed in ESCC, NSCLC and NPC, but not in BC. In addition, our results indicated statistical significance existed in

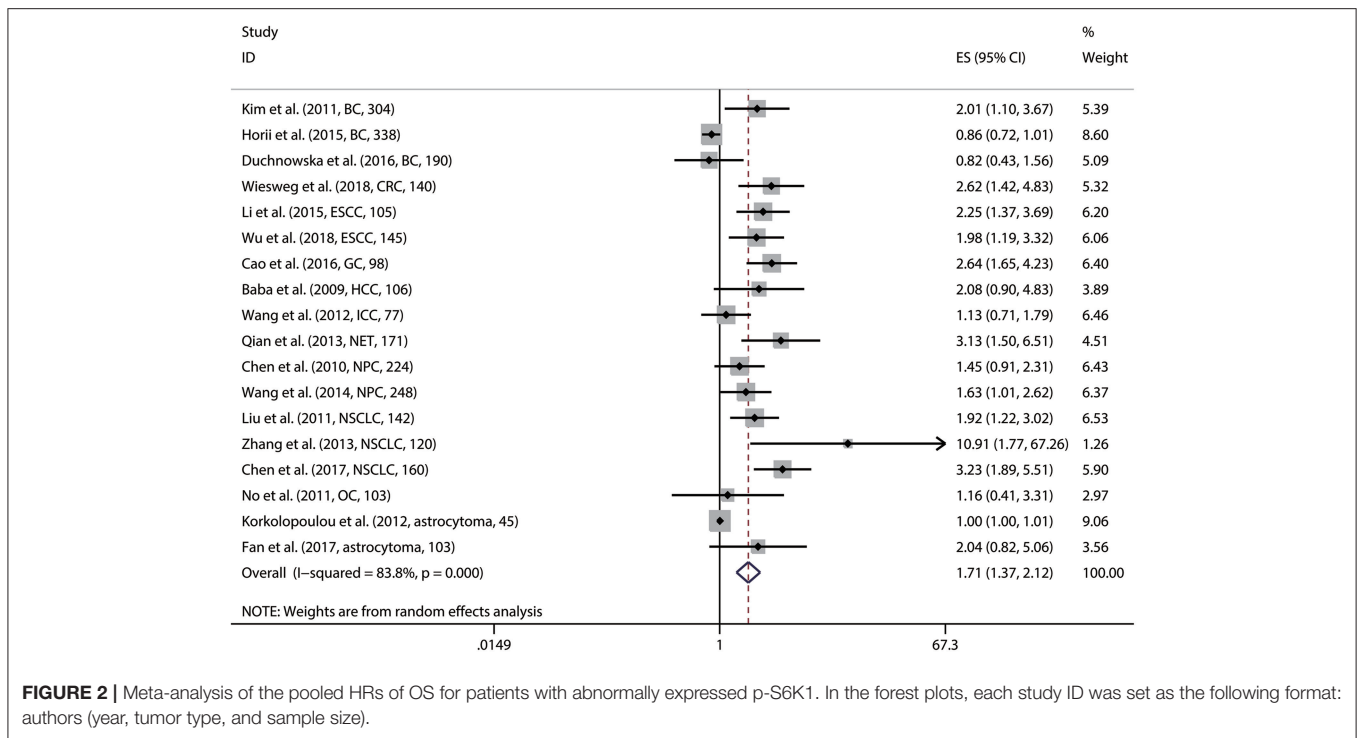


FIGURE 2 | Meta-analysis of the pooled HRs of OS for patients with abnormally expressed p-S6K1. In the forest plots, each study ID was set as the following format: authors (year, tumor type, and sample size).

the association between p-S6K1 overexpression and shorter DFS, S6K1 overexpression and shorter EFS, p-S6 overexpression and shorter PFS, p-S6 overexpression and shorter RFS, respectively. However, discrepant results of these analyses might derive from limited number of eligible studies. Therefore, larger-scale, multicenter studies including all stage patients are highly required for more comprehensive analysis in the future.

Obvious heterogeneity was detected in the analysis of the prognostic value of p-S6K1 in OS of solid tumor patients, which would downgrade the evidence potentially. We speculated that discrepant tumor stage and therapeutic regimen might be the sources of heterogeneity. After excluding two studies Korkolopoulou et al. (38) and Horii et al. (54), which were indicated to be the potential sources of heterogeneity by Galbraith plot, I^2 declined dramatically to 43.6%. Korkolopoulou et al. (38) is the only study exploring p-S6K1 phosphorylated at Thr421/Ser424. In addition, inclusion of breast cancer might cause a part of heterogeneity. Results of the survival analysis of p-S6K1 in OS of breast cancer were inconsistent across different researches and prognostic significance was not obtained in the current studies. Two researches Horii et al. (54) and Duchnowska et al. (60) reported that the expression of p-S6K1 predicted favorable OS without statistical significance. Kim et al. (34) reported that p-S6K1 was an independent prognostic factor in hormone receptor (HR)-positive, but not HR-negative, breast cancer. Furthermore, S6K/p-S6 could exert a pro-tumor effect via regulating the phosphorylation status of ER (73) and the production of vascular endothelial growth factor (VEGF) (74) of breast cancer cells. Moreover, the role of p-S6K1 varied considerably in different specific targeted therapies of breast cancer (34, 47, 75).

Publication bias might exist in the current meta-analysis. The bias might derive from the exclusion of non-English articles and the retrieval method limited to studies published in peer-reviewed journals. A majority of the included studies tended to report positive results so the prognostic value of S6K1, p-S6K1, or p-S6 might be overestimated to some extent. In addition, we speculated that inconsistent calculation methods and different sensitivities resulted in the discrepant statistical significance between Begg's test and Egger's test. In view of the issue of publication bias, we conducted trim and fill analysis and acquired a statistically significant result again.

The mechanisms that S6K1 pathway influences the prognosis of solid tumor patients have been thoroughly elucidated. S6K1 plays a critical role in cell metabolism and growth, potentially in association with malignant biological properties, including cancer cell growth, proliferation and migration. It was reported that S6K1-mediated phosphatidylinositol 4-phosphate 5-kinase type I γ (PIP3K γ 90) phosphorylation regulated the development of cancer cell migration and invasion (76). Another study demonstrated that the mTOR/S6K1 was hyperactivated in breast cancer cells, and inhibition of S6K1 could downregulate p-S6 and impede cell growth and migration (77, 78). Similarly, S6K1 was found to stimulate ovarian cancer cell invasion by activating matrix metalloproteinase (MMP)-9 (79). Amaral et al. (80) revealed that S6K1 overexpression strengthened prostate cancer cell viability, migration, and tumor formation *in vivo*. Previous research also indicated that p-S6 attenuated p53-mediated tumor suppression in pancreatic cancer and positively related to pancreatic intraepithelial neoplasia (PanIN) (21).

However, a few limitations of the current meta-analysis should be underlined. First, there is a considerable discrepancy

TABLE 3 | Subgroup analysis of pooled HRs for OS in cancer patients with abnormal expression level of p-S6K1.

Subgroup analysis	No. of cohorts	Pooled HR (95% CI)	P	Heterogeneity		P (meta regression)
				I ²	P	
Sample size						0.775
<150	11	1.86 (1.31, 2.65)	0.001*	84.0%	<0.001	–
≥150	7	1.61 (1.03, 2.51)	0.037*	85.0%	<0.001	–
NOS score						0.718
<7	5	1.68 (1.02, 2.79)	0.044*	67.7%	0.015	–
≥7	13	1.72 (1.34, 2.20)	<0.001*	85.6%	<0.001	–
Region						0.966
Western country	5	1.61 (0.94, 2.75)	0.082	81.8%	<0.001	–
Eastern country	13	1.81 (1.32, 2.47)	0.001*	80.8%	<0.001	–
Follow-up period						0.378
≥100 months	11	1.49 (1.18, 1.87)	0.001*	79.7%	<0.001	–
<100 months	7	2.06 (1.44, 2.93)	0.002*	59.4%	0.022	–
Source of HRs						0.182
Directly	16	1.65 (1.32, 2.05)	<0.001*	84.3%	<0.001	–
Indirectly	2	3.89 (0.81, 18.75)	0.091	61.9%	0.105	–
Preoperative treatment						0.543
No	14	1.62 (1.29, 2.05)	<0.001*	82.9%	<0.001	–
Yes or unclear	4	1.97 (1.13, 3.42)	0.017*	69.2%	0.021	–

*p < 0.05.

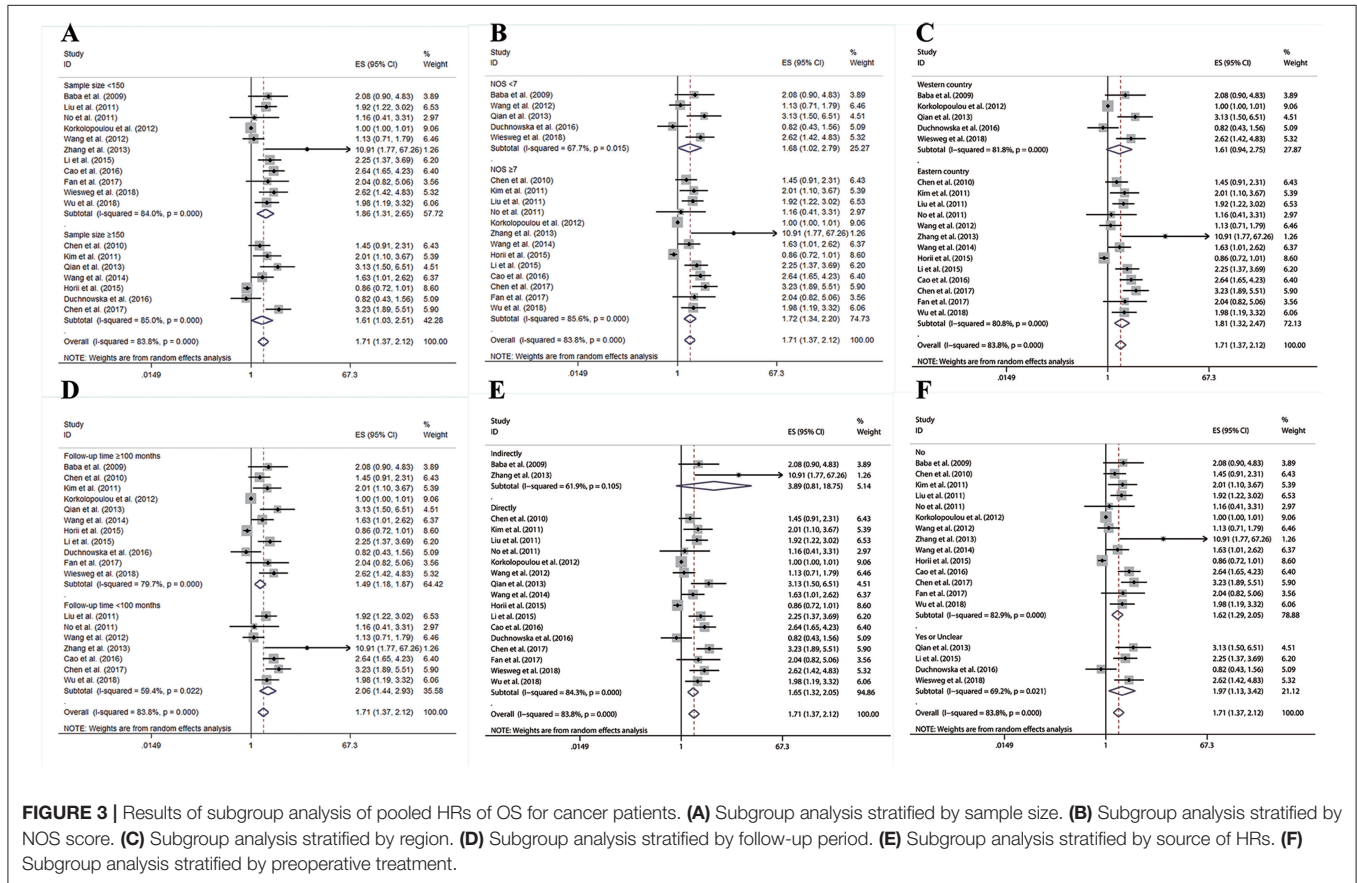
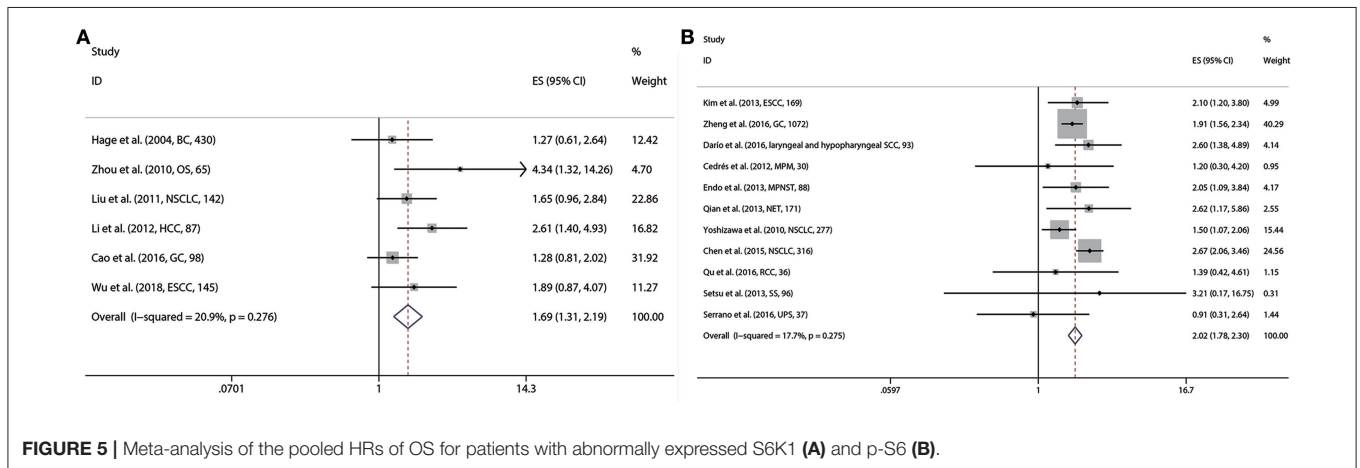
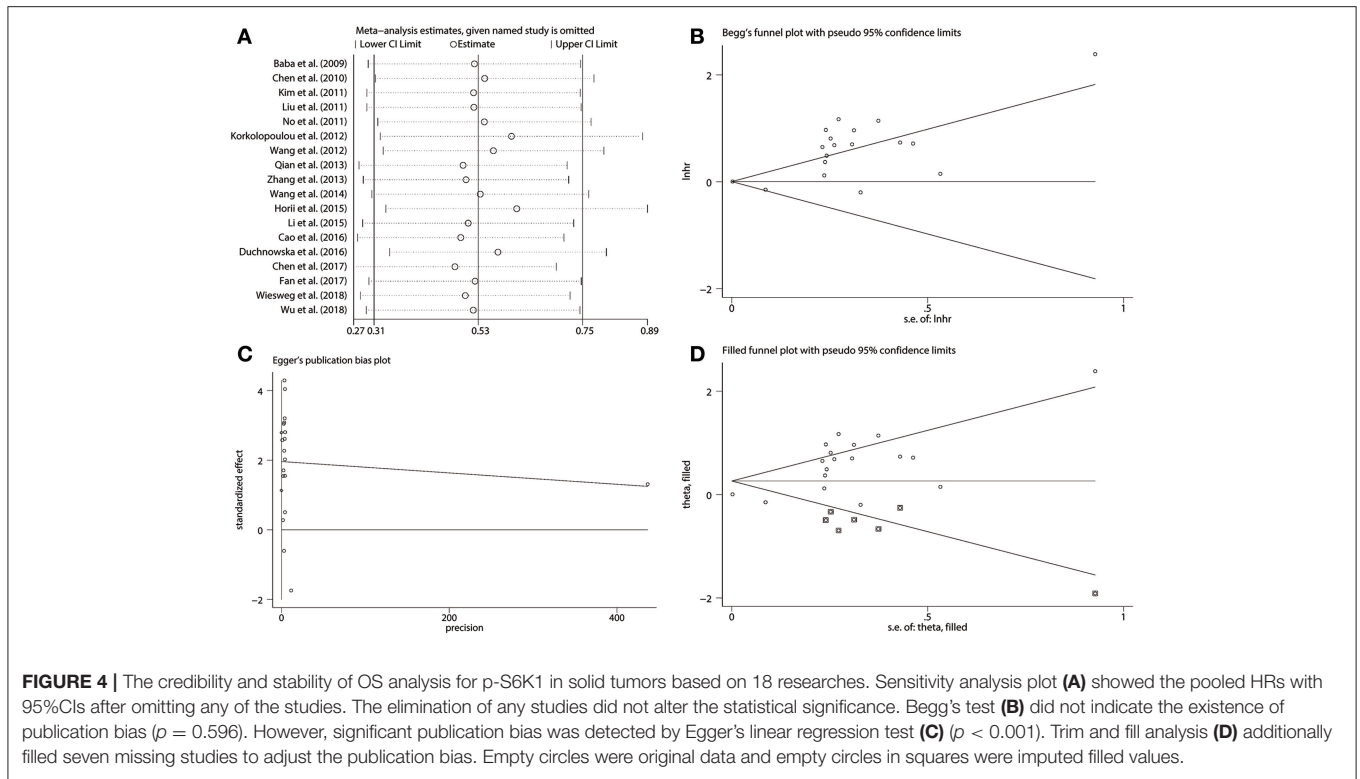


FIGURE 3 | Results of subgroup analysis of pooled HRs of OS for cancer patients. **(A)** Subgroup analysis stratified by sample size. **(B)** Subgroup analysis stratified by NOS score. **(C)** Subgroup analysis stratified by region. **(D)** Subgroup analysis stratified by follow-up period. **(E)** Subgroup analysis stratified by source of HRs. **(F)** Subgroup analysis stratified by preoperative treatment.



of the cut-off methodologies of target protein expression among included studies, although H-score according to staining intensity and positive proportion was widely used. Second, HRs or CIs of six studies could not be directly extracted from original publications. Errors possibly existed in the process of calculating HRs and 95% CIs by Kaplan-Meier curves. Third, included tumor types varied dramatically. Their pathological pattern, degree, clinical stage and therapeutic regimen differed from each other. Fourth, in order to achieve internal consistency of the evaluation methodology, only studies estimating protein expression by IHC staining were included in the current meta-analysis. Fifth, the outcomes of the current meta-analysis might be limited by the retrospective nature of the majority of included studies.

CONCLUSIONS

Our study demonstrated that S6K1, p-S6K1, and p-S6 might be unfavorable prognostic biomarkers in patients with solid tumors. However, the value of S6K1 pathway as anti-cancer targets is still unclear. Therefore, more prospective, high-quality and multi-center clinical trials are urgently needed to explore the impact of potent inhibitors targeting S6K1 pathway on the prognosis of solid tumor patients.

AUTHOR CONTRIBUTIONS

SZ and BH collected, extracted, and analyzed the data. WL and SC performed quality assessment and

analyzed the data. XL wrote the paper. ZS conceived and designed this study. All authors read and approved the final manuscript.

FUNDING

This study was supported by Grants 2016YFC1100100 from The National Key Research and Development Program of China, Grants 91649204 from Major Research Plan of National Natural Science Foundation of China.

REFERENCES

1. Siegel RL, Miller KD, Jemal A. Cancer statistics, 2015. *CA Cancer J Clin.* (2015) 65:5–29. doi: 10.3322/caac.21254
2. Chen W, Zheng R, Baade PD, Zhang S, Zeng H, Bray F, et al. Cancer statistics in China, 2015. *CA Cancer J Clin.* (2016) 66:115–32. doi: 10.3322/caac.21338
3. Jonsson B, Hofmarcher T, Lindgren P, Wilking N. The cost and burden of cancer in the European Union 1995–2014. *Eur J Cancer.* (2016) 66:162–70. doi: 10.1016/j.ejca.2016.06.022
4. Kalaydina RV, Bajwa K, Qorri B, Decarlo A, Szewczuk MR. Recent advances in “smart” delivery systems for extended drug release in cancer therapy. *Int J Nanomed.* (2018) 13:4727–45. doi: 10.2147/ijn.s168053
5. Lalani AA, McGregor BA, Albiges L, Choueiri TK, Motzer R, Powles T, et al. Systemic treatment of metastatic clear cell renal cell carcinoma in 2018: current paradigms, use of immunotherapy, and future directions. *Eur Urol.* (2018) 75:100–10. doi: 10.1016/j.eururo.2018.10.010
6. Turner BM, Hicks DG. Pathologic diagnosis of breast cancer patients: evolution of the traditional clinical-pathologic paradigm toward “precision” cancer therapy. *Biotech Histochem.* 92:175–200. doi: 10.1080/10520295.2017.1290276
7. Patel SP, Kurzrock R. PD-L1 expression as a predictive biomarker in cancer immunotherapy. *Mol Cancer Ther.* (2015) 14:847–56. doi: 10.1158/1535-7163.mct-14-0983
8. Faes S, Dormond O. PI3K and AKT: unfaithful partners in cancer. *Int J Mol Sci.* (2015) 16:21138–52. doi: 10.3390/ijms160921138
9. Zhang LL, Mu GG, Ding QS, Li YX, Shi YB, Dai JF, et al. Phosphatase and tensin homolog (PTEN) represses colon cancer progression through inhibiting paxillin transcription via PI3K/AKT/NF-kappaB pathway. *J Biol Chem.* (2015) 290:15018–29. doi: 10.1074/jbc.M115.641407
10. Coleman LJ, Peter MB, Teall TJ, Brannan RA, Hanby AM, Honarpisheh H, et al. Combined analysis of eIF4E and 4E-binding protein expression predicts breast cancer survival and estimates eIF4E activity. *Br J Cancer.* (2009) 100:1393–9. doi: 10.1038/sj.bjc.6605044
11. Armengol G, Rojo F, Castellvi J, Iglesias C, Cuatrecasas M, Pons B, et al. 4E-binding protein 1: a key molecular “funnel factor” in human cancer with clinical implications. *Cancer Res.* (2007) 67:7551–5. doi: 10.1158/0008-5472.can-07-0881
12. Ocana A, Vera-Badillo F, Al-Mubarak M, Templeton AJ, Corrales-Sanchez V, Diez-Gonzalez L, et al. Activation of the PI3K/mTOR/AKT pathway and survival in solid tumors: systematic review and meta-analysis. *PLoS ONE.* (2014) 9:e95219. doi: 10.1371/journal.pone.0095219
13. Marques AE, Elias ST, Porporatti AL, Castilho RM, Squarize CH, De Luca Canto G, et al. mTOR pathway protein immunorexpression as a prognostic factor for survival in head and neck cancer patients: a systematic review and meta-analysis. *J Oral Pathol Med.* (2016) 45:319–28. doi: 10.1111/jop.12390
14. Bahrami BF, Ataie-Kachoei P, Pourgholami MH, Morris DL. p70 Ribosomal protein S6 kinase (Rps6kb1): an update. *J Clin Pathol.* (2014) 67:1019–25. doi: 10.1136/jclinpath-2014-202560
15. Um SH, D'Alessio D, Thomas G. Nutrient overload, insulin resistance, and ribosomal protein S6 kinase 1, S6K1. *Cell Metab.* (2006) 3:393–402. doi: 10.1016/j.cmet.2006.05.003
16. Carriere A, Cargnello M, Julien LA, Gao H, Bonnell E, Thibault P, et al. Oncogenic MAPK signaling stimulates mTORC1 activity by promoting

ACKNOWLEDGMENTS

We would like to thank the researchers and study participants for their contributions.

SUPPLEMENTARY MATERIAL

The Supplementary Material for this article can be found online at: <https://www.frontiersin.org/articles/10.3389/fonc.2019.00390/full#supplementary-material>

17. Romanelli A, Dreisbach VC, Blenis J. Characterization of phosphatidylinositol 3-kinase-dependent phosphorylation of the hydrophobic motif site Thr(389) in p70 S6 kinase 1. *J Biol Chem.* (2002) 277:40281–9. doi: 10.1074/jbc.M205168200
18. Ip CK, Wong AS. Exploiting p70 S6 kinase as a target for ovarian cancer. *Expert Opin Ther Targets.* (2012) 16:619–30. doi: 10.1517/14728222.2012.684680
19. Goktuna SI. IKKε inhibits TSC1 to activate the mTOR/S6K pathway for oncogenic transformation. *Turkish J Biol.* (2018) 42:268–78. doi: 10.3906/biy-1801-57
20. Peterson RT, Schreiber SL. Translation control: connecting mitogens and the ribosome. *Curr Biol.* (1998) 8:R248–50.
21. Khalailah A, Dreazen A, Khatib A, Apel R, Swisa A, Kidess-Bassir N, et al. Phosphorylation of ribosomal protein S6 attenuates DNA damage and tumor suppression during development of pancreatic cancer. *Cancer Res.* (2013) 73:1811–20. doi: 10.1158/0008-5472.can-12-2014
22. Holz MK. The role of S6K1 in ER-positive breast cancer. *Cell Cycle.* (2012) 11:3159–65. doi: 10.4161/cc.21194
23. Holz MK, Ballif BA, Gygi SP, Blenis J. mTOR and S6K1 mediate assembly of the translation preinitiation complex through dynamic protein interchange and ordered phosphorylation events. *Cell.* (2005) 123:569–80. doi: 10.1016/j.cell.2005.10.024
24. Shahbazian D, Roux PP, Mieulet V, Cohen MS, Raught B, Taunton J, et al. The mTOR/PI3K and MAPK pathways converge on eIF4B to control its phosphorylation and activity. *EMBO J.* (2006) 25:2781–91. doi: 10.1038/sj.emboj.7601166
25. Stanley TD, Doucouliagos H. Meta-regression approximations to reduce publication selection bias. *Res Synth Methods.* (2014) 5:60–78. doi: 10.1002/jrsm.1095
26. Anzures-Cabrera J, Higgins JP. Graphical displays for meta-analysis: an overview with suggestions for practice. *Res Synth Methods.* (2010) 1:66–80. doi: 10.1002/jrsm.6
27. Duval S, Tweedie R. Trim and fill: a simple funnel-plot-based method of testing and adjusting for publication bias in meta-analysis. *Biometrics.* (2000) 56:455–63. doi: 10.1111/j.0006-341x.2000.00455.x
28. van der Hage JA, van den Broek LJ, Legrand C, Clahsen PC, Bosch CJ, Robanus-Maandag EC, et al. Overexpression of P70 S6 kinase protein is associated with increased risk of locoregional recurrence in node-negative premenopausal early breast cancer patients. *Br J Cancer.* (2004) 90:1543–50. doi: 10.1038/sj.bjc.6601741
29. Campbell L, Jasani B, Edwards K, Gumbleton M, Griffiths DF. Combined expression of caveolin-1 and an activated AKT/mTOR pathway predicts reduced disease-free survival in clinically confined renal cell carcinoma. *Br J Cancer.* (2008) 98:931–40. doi: 10.1038/sj.bjc.6604243
30. Baba HA, Wohlschlaeger J, Cicinnati VR, Hilgard P, Lang H, Sotiropoulos GC, et al. Phosphorylation of p70S6 kinase predicts overall survival in patients with clear margin-resected hepatocellular carcinoma. *Liver Int.* (2009) 29:399–405. doi: 10.1111/j.1478-3231.2008.01798.x
31. Chen J, Hu C-F, Hou J-H, Shao Q, Yan L-X, Zhu X-F, et al. Epstein-Barr virus encoded latent membrane protein 1 regulates mTOR signaling pathway genes

- which predict poor prognosis of nasopharyngeal carcinoma. *J Transl Med.* (2010) 8:30. doi: 10.1186/1479-5876-8-30
32. Yoshizawa A, Fukuoka J, Shimizu S, Shilo K, Franks TJ, Hewitt SM, et al. Overexpression of phospho-eIF4E is associated with survival through AKT pathway in non-small cell lung cancer. *Clin Cancer Res.* (2010) 16:240–8. doi: 10.1158/1078-0432.ccr-09-0986
 33. Zhou Q, Deng Z, Zhu Y, Long H, Zhang S, Zhao J. mTOR/p70S6K signal transduction pathway contributes to osteosarcoma progression and patients' prognosis. *Med Oncol.* (2010) 27:1239–45. doi: 10.1007/s12032-009-9365-y
 34. Kim EK, Kim HA, Koh JS, Kim MS, Kim KI, Lee JL, et al. Phosphorylated S6K1 is a possible marker for endocrine therapy resistance in hormone receptor-positive breast cancer. *Breast Cancer Res Treat.* (2011) 126:93–9. doi: 10.1007/s10549-010-1315-z
 35. Liu D, Huang Y, Chen B, Zeng J, Guo N, Zhang S, et al. Activation of mammalian target of rapamycin pathway confers adverse outcome in nonsmall cell lung carcinoma. *Cancer.* (2011) 117:3763–73. doi: 10.1002/cncr.25959
 36. No JH, Jeon YT, Park IA, Kim YB, Kim JW, Park NH, et al. Activation of mTOR signaling pathway associated with adverse prognostic factors of epithelial ovarian cancer. *Gynecol Oncol.* (2011) 121:8–12. doi: 10.1016/j.ygyno.2010.12.364
 37. Cedres S, Montero MA, Martinez P, Martinez A, Rodriguez-Freixinos V, Torrejon D, et al. Exploratory analysis of activation of PTEN-PI3K pathway and downstream proteins in malignant pleural mesothelioma (MPM). *Lung Cancer.* (2012) 77:192–8. doi: 10.1016/j.lungcan.2012.02.022
 38. Korkolopoulou P, Levidou G, El-Habr EA, Piperi C, Adamopoulos C, Samaras V, et al. Phosphorylated 4E-binding protein 1 (p-4E-BP1): a novel prognostic marker in human astrocytomas. *Histopathology.* (2012) 61:293–305. doi: 10.1111/j.1365-2559.2012.04236.x
 39. Li PD, Zhang WJ, Zhang MY, Yuan LJ, Cha YL, Ying XF, et al. Overexpression of RPS6KB1 predicts worse prognosis in primary HCC patients. *Med Oncol.* (2012) 29:3070–6. doi: 10.1007/s12032-012-0268-y
 40. Mueller S, Phillips J, Onar-Thomas A, Romero E, Zheng S, Wiencke JK, et al. PTEN promoter methylation and activation of the PI3K/Akt/mTOR pathway in pediatric gliomas and influence on clinical outcome. *Neuro-oncology.* (2012) 14:1146–52. doi: 10.1093/neuonc/nos140
 41. Wang Z, Zheng T, Wu Q, Wang J, Wu C, Wang J. Immunohistochemical analysis of the mTOR pathway in intrahepatic cholangiocarcinoma. *Neoplasma.* (2012) 59:137–41. doi: 10.4149/neo_2012_018
 42. Endo M, Yamamoto H, Setsu N, Kohashi K, Takahashi Y, Ishii T, et al. Prognostic significance of AKT/mTOR and MAPK pathways and antitumor effect of mTOR inhibitor in NF1-related and sporadic malignant peripheral nerve sheath tumors. *Clin Cancer Res.* (2013) 19:450–61. doi: 10.1158/1078-0432.ccr-12-1067
 43. Fahmy M, Mansure JJ, Brimo F, Yafi FA, Segal R, Althunayan A, et al. Relevance of the mammalian target of rapamycin pathway in the prognosis of patients with high-risk non-muscle invasive bladder cancer. *Hum Pathol.* (2013) 44:1766–72. doi: 10.1016/j.humpath.2012.11.026
 44. Kim SH, Jang YH, Chau GC, Pyo S, Um SH. Prognostic significance and function of phosphorylated ribosomal protein S6 in esophageal squamous cell carcinoma. *Modern Pathol.* (2013) 26:327–35. doi: 10.1038/modpathol.2012.161
 45. Setsu N, Kohashi K, Fushimi F, Endo M, Yamamoto H, Takahashi Y, et al. Prognostic impact of the activation status of the Akt/mTOR pathway in synovial sarcoma. *Cancer.* (2013) 119:3504–13. doi: 10.1002/cncr.28255
 46. Zhang Y, Ni H-J, Cheng D-Y. Prognostic Value of Phosphorylated mTOR/RPS6KB1 in Non-small Cell Lung Cancer. *Asian Pacific J Cancer Prevent.* (2013) 14:3725–8. doi: 10.7314/apjcp.2013.14.6.3725
 47. Beelen K, Opdam M, Severson TM, Koornstra RH, Vincent AD, Wesseling J, et al. Phosphorylated p-70S6K predicts tamoxifen resistance in postmenopausal breast cancer patients randomized between adjuvant tamoxifen versus no systemic treatment. *Breast Cancer Res.* (2014) 16:R6. doi: 10.1186/bcr3598
 48. Kim SJ, Kim JH, Jung HS, Lee TJ, Lee KM, Chang IH. Phosphorylated p70S6K in noninvasive low-grade urothelial carcinoma of the bladder: correlation with tumor recurrence. *Asian J Androl.* (2014) 16:611–7. doi: 10.4103/1008-682x.123675
 49. Nishikawa M, Miyake H, Harada K, Fujisawa M. Expression level of phosphorylated-4E-binding protein 1 in radical nephrectomy specimens as a prognostic predictor in patients with metastatic renal cell carcinoma treated with mammalian target of rapamycin inhibitors. *Med Oncol.* (2014) 31:792. doi: 10.1007/s12032-013-0792-4
 50. Wang W, Wen Q, Xu L, Xie G, Li J, Luo J, et al. Activation of Akt/mTOR pathway is associated with poor prognosis of nasopharyngeal carcinoma. *PLoS ONE.* (2014) 9:e106098. doi: 10.1371/journal.pone.0106098
 51. Bostner J, Karlsson E, Eding CB, Perez-Tenorio G, Franzen H, Konstantinell A, et al. S6 kinase signaling: tamoxifen response and prognostic indication in two breast cancer cohorts. *Endocrine-related Cancer.* (2015) 22:331–43. doi: 10.1530/erc-14-0513
 52. Chen B, Tan Z, Gao J, Wu W, Liu L, Jin W, et al. Hyperphosphorylation of ribosomal protein S6 predicts unfavorable clinical survival in non-small cell lung cancer. *J Exp Clin Cancer Res.* (2015) 34:126. doi: 10.1186/s13046-015-0239-1
 53. Haddad AQ, Kapur P, Singla N, Raman JD, Then MT, Nuhn P, et al. Validation of mammalian target of rapamycin biomarker panel in patients with clear cell renal cell carcinoma. *Cancer.* (2015) 121:43–50. doi: 10.1002/cncr.28976
 54. Horii R, Matsuura M, Dan S, Ushijima M, Uehiro N, Ogiya A, et al. Extensive analysis of signaling pathway molecules in breast cancer: association with clinicopathological characteristics. *Int J Clin Oncol.* (2015) 20:490–8. doi: 10.1007/s10147-014-0753-8
 55. Li SH, Chen CH, Lu HI, Huang WT, Tien WY, Lan YC, et al. Phosphorylated p70S6K expression is an independent prognosticator for patients with esophageal squamous cell carcinoma. *Surgery.* (2015) 157:570–80. doi: 10.1016/j.surg.2014.10.014
 56. Ma BL, Shan MH, Sun G, Ren GH, Dong C, Yao X, et al. Immunohistochemical analysis of phosphorylated mammalian target of rapamycin and its downstream signaling components in invasive breast cancer. *Mol Med Rep.* (2015) 12:5246–54. doi: 10.3892/mmr.2015.4037
 57. Nishikawa M, Miyake H, Behnsawy HM, Fujisawa M. Significance of 4E-binding protein 1 as a therapeutic target for invasive urothelial carcinoma of the bladder. *Urol Oncol.* (2015) 33:166.e9–15. doi: 10.1016/j.urolonc.2014.12.006
 58. Benslama N, Bollard J, Vercherat C, Massoma P, Roche C, Hervieu V, et al. Prediction of response to everolimus in neuroendocrine tumors: evaluation of clinical, biological and histological factors. *Invest New Drugs.* (2016) 34:654–62. doi: 10.1007/s10637-016-0363-6
 59. Cao G-d, Xu X-y, Zhang J-w, Chen B, Xiong M-m. Phosphorylated mammalian target of rapamycin p-mTOR is a favorable prognostic factor than mTOR in gastric cancer. *PLoS ONE.* (2016) 11:e0168085. doi: 10.1371/journal.pone.0168085
 60. Duchnowska R, Wysocki PJ, Korski K, Czartoryska-Arlukowicz B, Niwinska A, Orlikowska M, et al. Immunohistochemical prediction of lapatinib efficacy in advanced HER2-positive breast cancer patients. *Oncotarget.* (2016) 7:550–64. doi: 10.18632/oncotarget.6375
 61. Garcia-Carracedo D, Villarronga MA, Alvarez-Teijeiro S, Hermida-Prado F, Santamaria I, Allonca E, et al. Impact of PI3K/AKT/mTOR pathway activation on the prognosis of patients with head and neck squamous cell carcinomas. *Oncotarget.* (2016) 7:29780–93. doi: 10.18632/oncotarget.8957
 62. Qu Y, Zhao R, Wang H, Chang K, Yang X, Zhou X, et al. Phosphorylated 4EBP1 is associated with tumor progression and poor prognosis in Xp11.2 translocation renal cell carcinoma. *Sci Rep.* (2016) 6:23594. doi: 10.1038/srep23594
 63. Serrano C, Romagosa C, Hernandez-Losa J, Simonetti S, Valverde C, Moline T, et al. RAS/MAPK pathway hyperactivation determines poor prognosis in undifferentiated pleomorphic sarcomas. *Cancer.* (2016) 122:99–107. doi: 10.1002/cncr.29733
 64. Zheng Z, Zheng Y, Zhang M, Wang J, Yu G, Fang W. Reciprocal expression of p-AMPKα and p-S6 is strongly associated with the prognosis of gastric cancer. *Tumour Biol.* (2016) 37:4803–11. doi: 10.1007/s13277-015-4193-5
 65. Chen B, Yang L, Zhang R, Gan Y, Zhang W, Liu D, et al. Hyperphosphorylation of RPS6KB1, rather than overexpression, predicts worse prognosis in non-small cell lung cancer patients. *PLoS ONE.* (2017) 12:e0182891. doi: 10.1371/journal.pone.0182891
 66. de Vicente JC, Pena I, Rodrigo JP, Rodriguez-Santamarta T, Lequerica-Fernandez P, Suarez-Fernandez L, et al. Phosphorylated ribosomal protein

- S6 correlation with p21 expression and inverse association with tumor size in oral squamous cell carcinoma. *Head Neck.* (2017) 39:1876–87. doi: 10.1002/hed.24854
67. Fan W, Wang W, Mao X, Chu S, Feng J, Xiao D, et al. Elevated levels of p-Mnk1, p-eIF4E and p-p70S6K proteins are associated with tumor recurrence and poor prognosis in astrocytomas. *J Neuro-oncol.* (2017) 131:485–93. doi: 10.1007/s11060-016-2327-2
 68. Wiesweg M, Reis H, Koster T, Goetz M, Worm K, Herold T, et al. Phosphorylation of p70 ribosomal protein S6 kinase beta-1 is an independent prognostic parameter in metastatic colorectal cancer. *Clin Colorectal Cancer.* (2018) 17:e331–52. doi: 10.1016/j.clcc.2018.02.003
 69. Azim HA, Kassem L, Treilleux I, Wang Q, El Enein MA, Anis SE, et al. Analysis of PI3K/mTOR pathway biomarkers and their prognostic value in women with hormone receptor-positive, HER2-negative early breast cancer. *Transl Oncol.* (2016) 9:114–23. doi: 10.1016/j.tranon.2016.01.001
 70. Qian ZR, Ter-Minassian M, Chan JA, Imamura Y, Hooshmand SM, Kuchiba A, et al. Prognostic significance of MTOR pathway component expression in neuroendocrine tumors. *J Clin Oncol.* (2013) 31:3418–25. doi: 10.1200/jco.2012.46.6946
 71. Wu N, Du Z, Zhu Y, Song Y, Pang L, Chen Z. The expression and prognostic impact of the PI3K/AKT/mTOR signaling pathway in advanced esophageal squamous cell carcinoma. *Technol Cancer Res Treatment.* (2018) 17:772. doi: 10.1177/1533033818758772
 72. Kim HS, Kim GY, Lim SJ, Kim YW. Expression of the mammalian target of rapamycin pathway markers in lung adenocarcinoma and squamous cell carcinoma. *Pathobiology.* (2012) 79:84–93. doi: 10.1159/000334340
 73. Maruani DM, Spiegel TN, Harris EN, Shachter AS, Unger HA, Herrero-Gonzalez S, et al. Estrogenic regulation of S6K1 expression creates a positive regulatory loop in control of breast cancer cell proliferation. *Oncogene.* (2012) 31:5073–80. doi: 10.1038/onc.2011.657
 74. Klos KS, Wyzomierski SL, Sun M, Tan M, Zhou X, Li P, et al. ErbB2 increases vascular endothelial growth factor protein synthesis via activation of mammalian target of rapamycin/p70S6K leading to increased angiogenesis and spontaneous metastasis of human breast cancer cells. *Cancer Res.* (2006) 66:2028–37. doi: 10.1158/0008-5472.can-04-4559
 75. Yamnik RL, Holz MK. mTOR/S6K1 and MAPK/RSK signaling pathways coordinately regulate estrogen receptor alpha serine 167 phosphorylation. *FEBS Lett.* (2010) 584:124–8. doi: 10.1016/j.febslet.2009.11.041
 76. Jafari N, Zheng Q, Li L, Li W, Qi L, Xiao J, et al. p70S6K1 (S6K1)-mediated phosphorylation regulates phosphatidylinositol 4-phosphate 5-kinase type I gamma degradation and cell invasion. *J Biol Chem.* (2016) 291:25729–41. doi: 10.1074/jbc.M116.742742
 77. Khotenskaya YB, Goverdhan A, Shen J, Ponz-Sarvisse M, Chang SS, Hsu MC, et al. S6K1 promotes invasiveness of breast cancer cells in a model of metastasis of triple-negative breast cancer. *Am J Transl Res.* (2014) 6:361–76.
 78. Akar U, Ozpolat B, Mehta K, Lopez-Berestein G, Zhang D, Ueno NT, et al. Targeting p70S6K prevented lung metastasis in a breast cancer xenograft model. *Mol Cancer Ther.* (2010) 9:1180–7. doi: 10.1158/1535-7163.mct-09-1025
 79. Zhou HY, Wong AS. Activation of p70S6K induces expression of matrix metalloproteinase 9 associated with hepatocyte growth factor-mediated invasion in human ovarian cancer cells. *Endocrinology.* (2006) 147:2557–66. doi: 10.1210/en.2005-1404
 80. Amaral CL, Freitas LB, Tamura RE, Tavares MR, Pavan IC, Bajgelman MC, et al. S6Ks isoforms contribute to viability, migration, docetaxel resistance and tumor formation of prostate cancer cells. *BMC Cancer.* (2016) 16:602. doi: 10.1186/s12885-016-2629-y

Conflict of Interest Statement: The authors declare that the research was conducted in the absence of any commercial or financial relationships that could be construed as a potential conflict of interest.

Copyright © 2019 Zhang, Hu, Lv, Chen, Liu and Shao. This is an open-access article distributed under the terms of the Creative Commons Attribution License (CC BY). The use, distribution or reproduction in other forums is permitted, provided the original author(s) and the copyright owner(s) are credited and that the original publication in this journal is cited, in accordance with accepted academic practice. No use, distribution or reproduction is permitted which does not comply with these terms.