



Postoperative Cavity Stereotactic Radiosurgery for Brain Metastases

Eduardo M. Marchan¹, Jennifer Peterson¹, Terence T. Sio², Kaisorn L. Chaichana³, Anna C. Harrell¹, Henry Ruiz-Garcia¹, Anita Mahajan⁴, Paul D. Brown⁴ and Daniel M. Trifiletti^{1,3*}

¹ Department of Radiation Oncology, Mayo Clinic, Jacksonville, FL, United States, ² Department of Radiation Oncology, Mayo Clinic, Phoenix, AZ, United States, ³ Department of Neurological Surgery, Mayo Clinic, Jacksonville, FL, United States, ⁴ Department of Radiation Oncology, Mayo Clinic, Rochester, MN, United States

OPEN ACCESS

Edited by:

Sunit Das,
St. Michael's Hospital, Canada

Reviewed by:

Pierpaolo Peruzzi,
Harvard Medical School, United States
Alfredo Conti,
Università degli Studi di Messina, Italy

*Correspondence:

Daniel M. Trifiletti
trifiletti.daniel@mayo.edu

Specialty section:

This article was submitted to
Neuro-Oncology and Neurosurgical
Oncology,
a section of the journal
Frontiers in Oncology

Received: 17 June 2018

Accepted: 06 August 2018

Published: 31 August 2018

Citation:

Marchan EM, Peterson J, Sio TT,
Chaichana KL, Harrell AC,
Ruiz-Garcia H, Mahajan A, Brown PD
and Trifiletti DM (2018) Postoperative
Cavity Stereotactic Radiosurgery for
Brain Metastases.
Front. Oncol. 8:342.
doi: 10.3389/fonc.2018.00342

During the past decade, tumor bed stereotactic radiosurgery (SRS) after surgical resection has been increasingly utilized in the management of brain metastases. SRS has risen as an alternative to adjuvant whole brain radiation therapy (WBRT), which has been shown in several studies to be associated with increased neurotoxicity. Multiple recent articles have shown favorable local control rates compared to those of WBRT. Specifically, improvements in local control can be achieved by adding a 2mm margin around the resection cavity. Risk factors that have been established as increasing the risk of local recurrence after resection include: subtotal resection, larger treatment volume, lower margin dose, and a long delay between surgery and SRS (>3 weeks). Moreover, consensus among experts in the field have established the importance of (a) fusion of the pre-operative magnetic resonance imaging scan to aid in volume delineation (b) contouring the entire surgical tract and (c) expanding the target to include possible microscopic disease that may extend to meningeal or venous sinus territory. These strategies can minimize the risks of symptomatic radiation-induced injury and leptomeningeal dissemination after postoperative SRS. Emerging data has arisen suggesting that multifraction postoperative SRS, or alternatively, preoperative SRS could provide decreased rates of radiation necrosis and leptomeningeal disease. Future prospective randomized clinical trials comparing outcomes between these techniques are necessary in order to improve outcomes in these patients.

Keywords: postoperative, radiosurgery, metastasis, resection, radiation

INTRODUCTION

While postoperative whole-brain radiation therapy (WBRT) can minimize the likelihood of both local recurrence within the surgical cavity and distant recurrence elsewhere in the brain, it has been associated with increased morbidity (1) [level 1 evidence]. WBRT can cause a clinically significant decrease in neurocognitive function (1, 2) and also quality of life (3).

Because of the increased neurotoxicity associated with WBRT, stereotactic radiosurgery (SRS) to the resected cavity has established itself as an effective alternative in the management of brain metastases after surgery. Favorable local control rates have previously been reported (4–6). Nonetheless, it is imperative to understand the factors that affect local control, patterns of failure, and symptomatic radiation-induced injury when considering SRS to the resected cavity. Among these key parameters include: appropriate target delineation (4, 6), cavity volume, margin dose

and isodose selection (7), SRS timing after surgery (7), and radiologic follow-up (4). Furthermore, alongside with the adoption of postoperative SRS for brain metastases during the last decade, alternative strategies have also been developed that could minimize symptomatic radiation-induced injury and leptomeningeal dissemination. These include: multi-fractional postoperative SRS (8, 9) and preoperative SRS (10).

Given the rapidly changing literature and advances associated with the field of brain metastasis treatment, this brief review will provide a global overview of the current paradigms in the postoperative SRS applications, and outline future directions which may improve the outcome for this particular group of patients.

Historical Role of Postoperative Radiation for Brain Metastases

Patchell et al. was among the first to confirm that surgical resection of a single brain metastasis followed by whole brain radiotherapy (WBRT) improved survival when compared to patients who underwent WBRT alone (median survival 40 weeks with resection + WBRT vs. 15 weeks with WBRT alone, $p < 0.01$) (11) [level 1 evidence]. In a separate prospective randomized trial for patients with single brain metastasis, Patchell et al. subsequently found that adjuvant WBRT after resection improved local tumor control and decreased the likelihood of distant brain failure and neurologic death, compared to surgery alone (12). As a result, WBRT became an important therapeutic option in the postoperative management of patients with cerebral metastases.

Some investigators have combined WBRT and SRS postoperatively with the goal of maximizing the tumoricidal dose to the resected cavity (13, 14). For example, Roberge et al. retrospectively reviewed the outcomes of 27 patients treated with WBRT and postoperative SRS (14). Given that only one patient (4%) required surgical intervention for symptomatic radiation necrosis, the authors concluded that WBRT and SRS can be safely combined (14).

The utilization of WBRT has declined during the last decade due to increasing concerns about radiotherapy-related neurologic toxicities leading to cognitive impairment. For example, N0574 enrolled 213 patients with 1–3 brain metastases which were randomized to SRS with or with WBRT (30 Gy in 12 fractions) (15) [level 1 evidence]. The primary endpoint was cognitive function and patients treated with WBRT were 45% more likely to experience cognitive deterioration at 3 months than those treated with SRS alone. Quality of life was higher at 3 months with SRS alone, including overall quality of life and there was no difference in overall survival between the treatment groups (median overall survival 10.4 months SRS alone and 7.4 months SRS plus WBRT). These results confirmed the cognitive impact of WBRT and suggested for patients with 1–3 brain metastases amenable to radiosurgery, SRS alone was the preferred strategy.

More recently, SRS has been utilized in patients with up to 10 brain metastases. Specifically, Yamamoto et al. reported in their series that SRS without WBRT in patients with five to 10 brain

metastases conferred non-inferior survival when compared to those patients found to have two to four brain metastases (16).

Emergence of SRS for Resected Brain Metastases

Given the neurotoxicity concerns associated with WBRT, technological improvement has been made over the last 10–15 years for utilizing SRS to the resected cavity. Multiple studies have found 12-month crude local control rates at 70–100% (4, 6, 8, 17–27), although most have been retrospective in nature. Brennan et al. reported the first prospective study on the efficacy of adjuvant SRS in patients with a limited number of brain metastases following surgery (27). Their median follow-up was 12.0 months (range: 1.0–94.1 months). Following surgical resection, 39 patients with 40 lesions were treated with SRS to the surgical bed to a median dose of 18 Gy (median time to SRS was 31 days). Their findings were consistent with a local control rate approximating 85%. Additionally, they found that non-small cell lung cancer (NSCLC) histology, tumor diameter < 3 cm, and deep parenchymal tumors were associated with improved local control. Superficial dural/pial involvement and tumor diameter > 3 cm were associated with increased local failure. Infratentorial lesions were at significantly increased risks of developing regional failure as opposed to supratentorial lesions.

The importance of larger target volume size (> 3 cm) negatively impacting outcomes, as evidenced by Brennan et al.'s findings, has also been corroborated by other investigators as well (27). Jensen et al. reported a series of 106 patients (112 lesions) with no prior WBRT, who were treated using radiosurgery directed to the resected cavity (18). Overall survival at 12 months was 46.8%, and local control at 12 months was 80.3%. Multivariate analysis revealed that preoperative lesion diameters of > 3 cm were predictive of increased local failure. Similarly, Hartford et al. reported the outcomes of 47 patients with 49 brain metastases treated with resection and postoperative SRS (26). After a median follow-up of 9.3 months, they found a 12-month local control rate of 85.5%. On univariate analysis, tumor size ≥ 3 cm was associated with a shorter period of time to local failure. Finally, Jagannathan et al. studied 47 patients who underwent SRS to the postoperative resection cavity following gross-total resection of the tumor (28). The mean volume of the cavity was 10.5 cm³. Three patients had recurrences within the resection cavity (6%). Increased surgical cavity size was associated with increased risk of local recurrence. Specifically, the volumes of these three patients' resection cavities were: 15.5, 18.4, and 21.1 cm³, while the mean volume for the rest of cases was 9.9 cm³ (28).

Degree of symmetrical expansion of the target volume for treatment has also been shown to play a key role in impacting treatment outcome. For example, Soltys et al. studied 72 patients treated from 1998 to 2006 who had SRS delivered to the resection cavity, with a median marginal dose of 18.6 Gy (6). The actuarial rate of local control at 12 months was 79%. Interestingly, improved local control was found in those treatment plans with less conformality. In fact, the conformity index was the only parameter that was significantly associated with improved local control. With this in mind, Choi et al. retrospectively studied

whether adding a margin would affect treatment outcome (4). The addition of a 2-mm margin was correlated with a statistically significant reduction in local failure at 12 months from 16% to 3%, without statistically increasing clinical toxicity profiles.

Surveillance imaging is also important following SRS. In their series, Choi et al. also illustrated the importance of close follow-up and surveillance if SRS was chosen as adjuvant treatment after surgery (4). This is evident by the high rate of distant brain failure found in this series (54% at 12 months), as well as in other clinical series for surgical cavity-based SRS (recurrence rates at 44–72%) (6, 19–21, 28). Therefore, frequent surveillance imaging (typically initial follow up MRI brain 2–3 months after SRS) is strongly recommended (17).

Dose selection for resected cavity SRS has largely been dependent on the size of the postsurgical cavities on thin-slice MRI and planning CT scan. Many of the published series still utilized the SRS dose-escalation algorithm for intact tumors as outlined by the landmark trial, Radiation Therapy Oncology Group (RTOG) 90–05, and extrapolate that to the postsurgical cavity cases (27, 29). As an example, Brennan et al.'s selection of postoperative SRS doses (27) was related to the maximal surgical cavity diameter (msc) as seen from the fusion of the MRI brain and planning CT, which was: (a) 22 Gy for $msc \leq 2.0$ cm; 18 Gy for 2.1–3.0 cm, and 15 Gy for 3.1–4.0 cm. This strategy, of margin dose reduction for large targets, has been similarly applied to the postoperative setting, including in prospective trials, to reduce the volume of normal brain exposed to high doses.

The timeliness of delivering SRS after surgery has also been highlighted by recent published studies (30, 31). For instance, Iorio-Morin et al. found that, on multivariate analysis, one of the risk factors for local recurrence included a longer surgery-to-SRS delay (more than 3 weeks) (7). Their recommendation was that SRS should take place as promptly as possible, with a target date of 3 weeks after surgical resection. These recommendations are consistent with Patel et al. who recently postulated, based on his findings of an increase in the tumor bed cavity size after surgery (32), that delaying postoperative SRS beyond 3 weeks in hopes of significant tumor bed cavity contraction should not be advised. Performing SRS within 2–3 weeks after surgery may be the ideal balance for allowing the patient to recover surgically, without excessive delay in postoperative treatment that could increase the risk of tumor recurrence.

Expert Consensus on Accurate Contour Delineation in Tumor Bed Radiosurgery

Recently, Soliman et al. published their consensus guidelines on accurate contour delineation in tumor bed radiosurgery (33). This is the first study published which comprehensively provides guidelines on design for the appropriate treatment SRS volumes for resected cavity cases. Here, internationally recognized authorities in the field each contoured ten postoperative completely resected cases of diverse clinical scenarios and cases consisted of tumors located in various regions of the brain. The level of agreement was adequate (mean sensitivity and specificity were 0.75 and 0.98, respectively). There were two cases of metastatic disease in the infratentorial compartment where

significant differences were detected among the contours, in regard to how generous the clinical target volume (CTV) should be along the bone flap.

This finding led the researchers to propose the following recommendations in regard to CTV design. First, the CTV should completely cover the contrast-enhancing surgical cavity with the use of the T1-weighted gadolinium-enhanced axial MRI scan, excluding any vasogenic edema; second, the CTV should completely encompass the surgical tract visualized on postoperative imaging; third, if preoperatively there was tumor contacting the dura, the CTV should include a 5–10 mm margin along the bone flap that extends beyond the area where there was existing contact before surgery; fourth, if there is no contact that is identified between the tumor and dura, the CTV should include a margin of 1–5 mm where the bone flap is located; finally, if there is any contact pre-operatively with any of the venous sinuses, there should be a 1–5 mm margin applied to the CTV in the area where the sinus is located (33). Hence, the authors concluded that venous sinus/meningeal coverage should be generous in the CTV to prevent failures in these high risk regions. While this study is helpful, it is important to recognize that these recommendations are based on expert opinion and further study is needed.

Complications and Recurrence Patterns Following Postoperative SRS

Radiation necrosis is a known potential complication after SRS and can be difficult to distinguish clinically and radiographically from tumor progression (34). Advanced techniques for distinguishing radiation necrosis from tumor recurrence now include nMR spectroscopy using Choline/N-Acetyl Aspartate and Choline/Creatine ratios and MR perfusion with the use of relative cerebral blood volume (35, 36). Current treatment options include glucocorticoids, hyperbaric oxygen, and surgery, bevacizumab, and focused interstitial laser thermal therapy, with varying degrees of effectiveness (37).

The literature has shown rates of radiographic radiation necrosis in patients treated with SRS (for intact brain metastases) to be as high as 24% (34). Meanwhile, wider ranges of rates of radiation necrosis have been observed after postoperative SRS. These rates of radionecrosis in tumor bed SRS cases have ranged from 1.5 to 18.5% (9, 27, 38–40). As reported by Keller et al., the infratentorial location was predictive of increased radionecrosis (hazard ratio [HR]: 2.97; 95% confidence interval [95% CI]: 1.47–6.01; $p = 0.0025$) (40). The V14Gy (volume of brain receiving 14 Gy) was also associated with the risk of radionecrosis following resected cavity SRS.

Regarding tumor progression, elsewhere intraparenchymal tumor progression remains the predominate location of intracranial failure after SRS for brain metastases. While these recurrence rates are generally similar to patients receiving SRS alone for intact brain metastases, some have postulated that rate of leptomeningeal carcinomatosis is higher with resection of brain metastases and surgical violation of the tumor capsule (30). The overall rate of leptomeningeal disease (LMD) in solid malignancies is estimated in the range of 5–15%, and varies based on several clinical and pathologic features (17, 30, 31, 41),

and LMD rates following resected cavity SRS have ranged from 8 to 24% (18, 20, 42). Current research has yet to pinpoint whether LMD in the postoperative SRS setting is a manifestation of the tumor's natural history, or if dissemination is secondary to the surgery itself (tumor spill) and whether postoperative SRS may also be indirectly contributing to it (higher incidences of distant tumor progression leading to LMD, etc.) (9). Several series have reported on this topic; for example, Atalar et al. reported a higher rate of LMD in patients with metastatic breast cancer which may be related to tumor biology (43). It has also been shown that piecemeal resections and brain metastases in the infratentorial compartment may lead to increased LMD (17, 20, 44). While tumor histology has clear implications on systemic therapy options and patient survival, there are very limited data to support a differing postoperative radiosurgical management (dose, timing, etc.) based on tumor histology alone.

Alternative Strategies: Fractionated and Preoperative SRS

Single-fraction SRS may have increased side effects, particularly for lesions >3 cm (27), or those located in eloquent regions (45, 46). As a result, hypofractionated SRS is a reasonable alternative to single-fraction SRS in both preserving tumor control and also reducing radionecrosis (**Figure 1**). Steinmann et al. studied 33 patients with single brain metastasis (median volume, 25.6 cc) who underwent surgery followed by hypofractionated SRS (8). A high local control rate of 71% at 1 year was achieved. Similarly, Wang reported a local control of 80% at 6 months with hypofractionated treatments. Meanwhile, Keller et al. published a series of 181 patients treated with a 3-fractionation schedule of 33 Gy to the resected cavity. The 1-year local control rate was 88% (9). Interestingly, on multivariate analysis, tumor contact with the meninges was predictive of increased local failure, which validated the importance of adding generous margin to the

CTV in that region as suggested by the consensus guidelines as discussed above (33).

Preoperative SRS is another potential strategy (**Figures 2, 3**). Recently, Patel et al. published findings from a multi-institutional study retrospectively comparing outcomes in the pre-operative vs. postoperative SRS settings (66 and 114 patients, respectively) (10). With a median follow-up of 24.6 months, no difference was found between groups for overall survival, local recurrence, or distant brain failure. However, surprisingly, postoperative SRS had significantly increased rates of LMD and symptomatic radionecrosis. A follow-up study was subsequently performed comparing outcomes between preoperative SRS and postoperative WBRT (47). A total of 102 patients were analyzed (66 in the pre-SRS group, vs. 36 in the post-op WBRT group), and the authors reported the 12-month overall survival rates were similar between groups, as were 24-month outcomes for local control, distant control, and the presence of LMD. Crude rates of radiation necrosis were 5.6 and 0% for the preoperative SRS and the postoperative WBRT groups, respectively. Future prospective studies should direct their effort to address whether preoperative SRS may be superior to postoperative SRS, and to evaluate the optimal radiation doses, timing between surgery and SRS treatments, and also salvage options for these patients requiring locoregional control for their limited brain metastases (9).

Recent Prospective Studies

In the past year, two randomized prospective trials have been published highlighting the effectiveness of postoperative SRS. Mahajan et al. compared 2 groups: those who underwent SRS (64 patients) vs. those who were observed after gross total tumor resection (68 patients) (48) [level 1 evidence]. Findings revealed that the 12 month freedom from local recurrence was significantly higher in the SRS group (72% in the SRS group vs. 43% in the observation group). In both

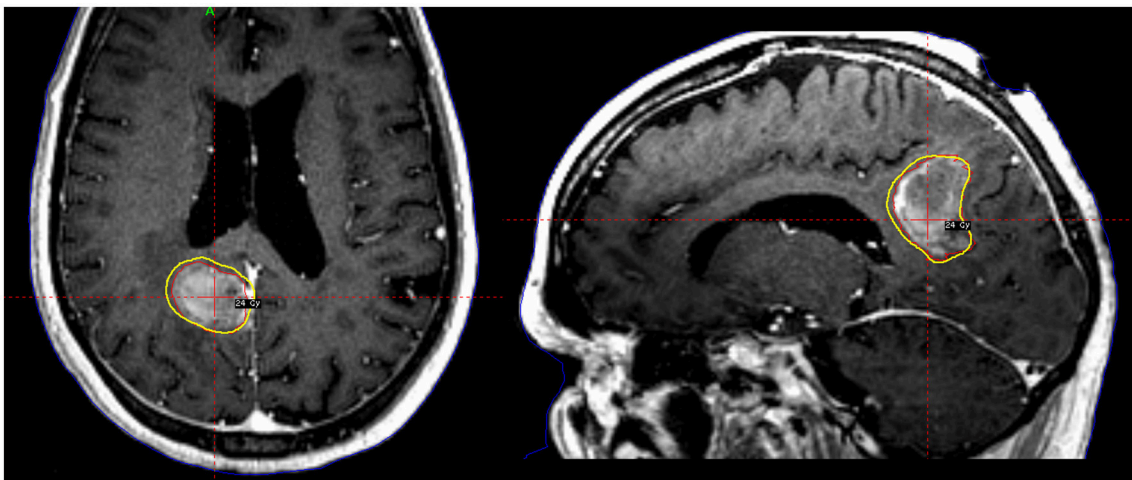


FIGURE 1 | A patient with a large tumor cavity following resection for brain metastasis received postoperative fractionated stereotactic radiosurgery to 24 Gy in 3 fractions.

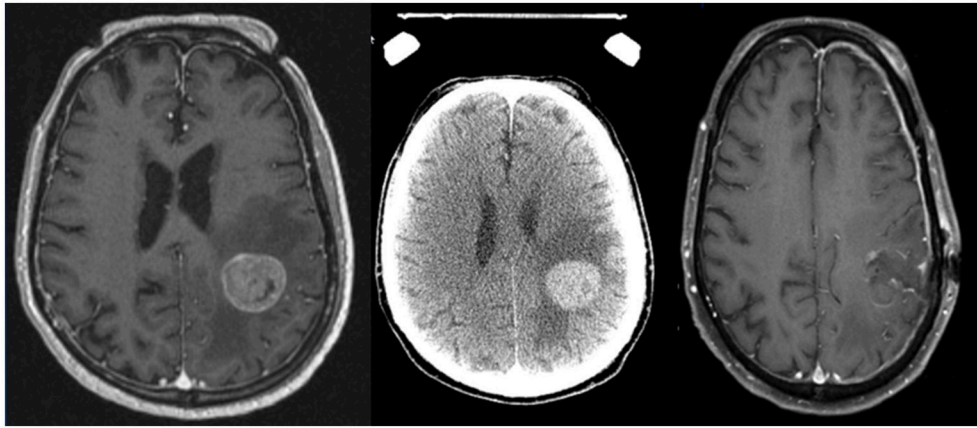


FIGURE 2 | Axial MRI and CT images of a patient with a brain metastases treated with preoperative stereotactic radiosurgery followed by resection days later.

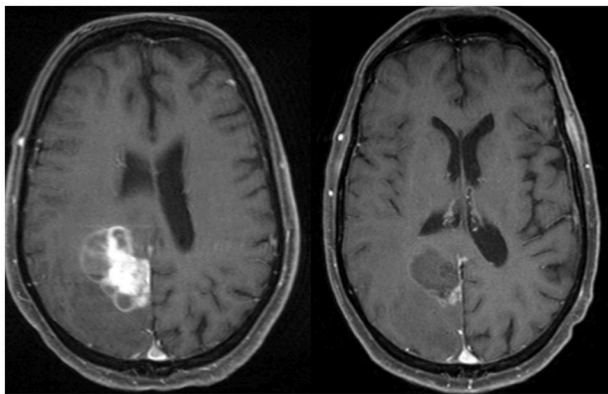


FIGURE 3 | Axial MRI and CT images of a patient with a brain metastases treated with preoperative stereotactic radiosurgery followed by resection days later.

groups, there were no adverse events or deaths attributed to either treatment. This study validated the recommendation for adjuvant radiosurgery even after gross total neurosurgical resection.

In a parallel cooperative group study, Brown et al. enrolled 194 patients randomized between postoperative SRS (98 patients) or WBRT (96 patients) (49). The results showed a greater decline in cognitive function, worse quality of life, and worse functional independence with the use of WBRT as compared to SRS. Although surgical bed control and intracranial control were improved with WBRT, there was no difference in overall survival was observed between the two groups.

The Future of Postoperative Radiosurgery

Postoperative SRS is associated with an acceptable rate of local control by multiple studies, and causes less neurotoxicity when compared to WBRT. As a result, postoperative SRS should be regarded as a standard of care in lieu of WBRT after surgery. Nonetheless, while most patients will still develop distant failure

after SRS treatment, the ability of postoperative SRS to spare or delay WBRT is an important advantage and of significant appreciation clinically by the patients who may otherwise require upfront WBRT.

Recent collaborative efforts such as Soliman et al. have been essential in establishing a standard on how to safely and successfully execute radiation contouring treatment design in tumor bed SRS cases (33). However, it is not yet known how to best utilize preoperative tumor extent in postoperative SRS target delineation. Moreover, margin dose selection and contouring techniques should be employed for unusual cases such as those with hemorrhage in the surgical cavity and those with piecemeal resections (33).

It remains to be seen whether prospective studies can show (a) a benefit in local control and/or improved toxicity for hypofractionated tumor bed SRS vs. single fraction tumor bed SRS and (b) whether pre-operative SRS can lead to decreased risks of radiation necrosis and/or LMD vs. postoperative SRS, and studies are underway to analyze these strategies.

In parallel, advancements in systemic therapy's intracranial effectiveness could be leveraged in combination with SRS. For example, we have witnessed the rapid rise in the use of immunotherapy as the first line therapy for many metastatic cancers (lung, melanoma, and renal). Recently, prospective data has emerged which supports the use of immunotherapy alone (without local therapy) for small, asymptomatic brain metastases. Specifically, a phase II study of the PD-1 (anti-programmed cell death protein 1) antibody pembrolizumab in patients with brain metastases from non-small cell lung cancer and melanoma (NCT02085070) was published showing that a durable brain metastasis response was achieved in 22% of patients with melanoma and 33% of patients with NSCLC (50). Toxic effects were consistent with those reported in previous trials of pembrolizumab in these diseases and neurological adverse events associated with drug or disease were infrequent and non-life threatening (50). The results of many prospective studies that combine immunotherapy and SRS are pending, which could inform synergy between these

modalities to improve local, as well as distant, tumor control (51). Intraoperative radiation therapy (IORT) has also been postulated as an alternative technique to improve the results of postoperative SRS, and likewise it may also prove to be a highly efficacious technique when combined with immunotherapy (52).

There are several active areas of research that may serve to redefine the role of radiosurgery in patients with metastatic cancer, not the least of which is immuno-radiosurgery. Recently, there has been a flurry of reports of possible synergy between radiosurgery and various immunomodulatory systemic agents (51, 53). Radiosurgery will, without doubt, play a key role in the

management of patients with metastatic disease in the future. As advances in surgical techniques, radiosurgical delivery, and systemic therapies develop, the relative role of these strategies will need to be continually refined.

AUTHOR CONTRIBUTIONS

EM and DT contributed conception and design of the mini-review. EM wrote the first draft of the manuscript. DT contributed the figures enclosed in the manuscript. All authors contributed to manuscript revision, read and approved the submitted version.

REFERENCES

- Chang EL, Wefel JS, Hess KR, Allen PK, Lang FF, Kornguth DG, et al. Neurocognition in patients with brain metastases treated with radiosurgery or radiosurgery plus whole-brain irradiation: a randomised controlled trial. *Lancet Oncol.* (2009) 10:1037–44. doi: 10.1016/S1470-2045(09)70263-3
- Trifiletti DM, Lee CC, Schlesinger D, Larner JM, Xu Z, Sheehan JP. Leukoencephalopathy after stereotactic radiosurgery for brain metastases. *Int J Radiat Oncol Biol Phys.* (2015) 93:870–8. doi: 10.1016/j.ijrobp.2015.07.2280
- Soffiotti R, Kocher M, Abacioglu UM, Villa S, Fauchon F, Baumert BG, et al. A European organisation for research and treatment of cancer phase III trial of adjuvant whole-brain radiotherapy versus observation in patients with one to three brain metastases from solid tumors after surgical resection or radiosurgery: quality-of-life results. *J Clin Oncol.* (2013) 31:65–72. doi: 10.1200/JCO.2011.41.0639
- Choi CY, Chang SD, Gibbs IC, Adler JR, Harsh GR, Lieberson RE, et al. Stereotactic radiosurgery of the postoperative resection cavity for brain metastases: prospective evaluation of target margin on tumor control. *Int J Radiat Oncol Biol Phys.* (2012) 84:336–42. doi: 10.1016/j.ijrobp.2011.12.009
- Roberge D, Parney I, Brown PD. Radiosurgery to the postoperative surgical cavity: who needs evidence? *Int J Radiat Oncol Biol Phys.* (2012) 83:486–93. doi: 10.1016/j.ijrobp.2011.09.032
- Soltys SG, Adler JR, Lipani JD, Jackson PS, Choi CY, Puataweepong P, et al. Stereotactic radiosurgery of the postoperative resection cavity for brain metastases. *Int J Radiat Oncol Biol Phys.* (2008) 70:187–93. doi: 10.1016/j.ijrobp.2007.06.068
- Iorio-Morin C, Masson-Cote L, Ezahr Y, Blanchard J, Ebacher A, Mathieu D. Early Gamma Knife stereotactic radiosurgery to the tumor bed of resected brain metastasis for improved local control. *J Neurosurg.* (2014) 121 Suppl:69–74. doi: 10.3171/2014.7.GKS141488
- Steinmann D, Maertens B, Janssen S, Werner M, Fruhauf J, Nakamura M, et al. Hypofractionated stereotactic radiotherapy (hfSRT) after tumour resection of a single brain metastasis: report of a single-centre individualized treatment approach. *J Cancer Res Clin Oncol.* (2012) 138:1523–9. doi: 10.1007/s00432-012-1227-x
- Keller A, Dore M, Cebula H, Thillays F, Proust F, Darie I, et al. Hypofractionated stereotactic radiation therapy to the resection bed for intracranial metastases. *Int J Radiat Oncol Biol Phys.* (2017) 99:1179–89. doi: 10.1016/j.ijrobp.2017.08.014
- Patel KR, Burri SH, Asher AL, Crocker IR, Fraser RW, Zhang C, et al. Comparing preoperative with postoperative stereotactic radiosurgery for resectable brain metastases: a multi-institutional analysis. *Neurosurgery* (2016) 79:279–85. doi: 10.1227/NEU.0000000000001096
- Patchell RA, Tibbs PA, Walsh JW, Dempsey RJ, Maruyama Y, Kryscio RJ, et al. A randomized trial of surgery in the treatment of single metastases to the brain. *N Engl J Med.* (1990) 322:494–500. doi: 10.1056/NEJM199002223220802
- Patchell RA, Tibbs PA, Regine WF, Dempsey RJ, Mohiuddin M, Kryscio RJ, et al. Postoperative radiotherapy in the treatment of single metastases to the brain: a randomized trial. *JAMA* (1998) 280:1485–9. doi: 10.1001/jama.280.17.1485
- Luther N, Kondziolka D, Kano H, Mousavi SH, Engh JA, Niranjan A, et al. Predicting tumor control after resection bed radiosurgery of brain metastases. *Neurosurgery* (2013) 73:1001–6. discussion: 6. doi: 10.1227/NEU.0000000000000148
- Roberge D, Petrecca K, El Refae M, Souhami L. Whole-brain radiotherapy and tumor bed radiosurgery following resection of solitary brain metastases. *J Neuro-Oncol.* (2009) 95:95–9. doi: 10.1007/s11060-009-9899-z
- Brown PD, Jaeckle K, Ballman KV, Farace E, Cerhan JH, Anderson SK, et al. Effect of radiosurgery alone vs. radiosurgery with whole brain radiation therapy on cognitive function in patients with 1 to 3 brain metastases: a randomized clinical trial. *JAMA* (2016) 316:401–9. doi: 10.1001/jama.2016.9839
- Yamamoto M, Serizawa T, Shuto T, Akabane A, Higuchi Y, Kawagishi J, et al. Stereotactic radiosurgery for patients with multiple brain metastases (JLKG0901): a multi-institutional prospective observational study. *Lancet Oncol.* (2014) 15:387–95. doi: 10.1016/S1470-2045(14)70061-0
- Ojerholm E, Lee JY, Thawani JP, Miller D, O'Rourke DM, Dorsey JE, et al. Stereotactic radiosurgery to the resection bed for intracranial metastases and risk of leptomeningeal carcinomatosis. *J Neurosurg.* (2014) 121(Suppl.):75–83. doi: 10.3171/2014.6.GKS14708
- Jensen CA, Chan MD, McCoy TP, Bourland JD, deGuzman AF, Ellis TL, et al. Cavity-directed radiosurgery as adjuvant therapy after resection of a brain metastasis. *J Neurosurg.* (2011) 114:1585–91. doi: 10.3171/2010.11.JNS10939
- Karlovits BJ, Quigley MR, Karlovits SM, Miller L, Johnson M, Gayou O, et al. Stereotactic radiosurgery boost to the resection bed for oligometastatic brain disease: challenging the tradition of adjuvant whole-brain radiotherapy. *Neurosurg Focus.* (2009) 27:E7. doi: 10.3171/2009.9.FOCUS09191
- Iwai Y, Yamanaka K, Yasui T. Boost radiosurgery for treatment of brain metastases after surgical resections. *Surg Neurol.* (2008) 69:181–6. discussion: 186. doi: 10.1016/j.surneu.2007.07.008
- Do L, Pevner R, Radany E, Liu A, Staud C, Badie B. Resection followed by stereotactic radiosurgery to resection cavity for intracranial metastases. *Int J Radiat Oncol Biol Phys.* (2009) 73:486–91. doi: 10.1016/j.ijrobp.2008.04.070
- Quigley MR, Fuhrer R, Karlovits S, Karlovits B, Johnson M. Single session stereotactic radiosurgery boost to the post-operative site in lieu of whole brain radiation in metastatic brain disease. *J Neuro-Oncol.* (2008) 87:327–32. doi: 10.1007/s11060-007-9515-z
- Prabhu R, Shu HK, Hadjipanayis C, Dhabaan A, Hall W, Raore B, et al. Current dosing paradigm for stereotactic radiosurgery alone after surgical resection of brain metastases needs to be optimized for improved local control. *Int J Radiat Oncol Biol Phys.* (2012) 83:e61–6. doi: 10.1016/j.ijrobp.2011.12.017
- Ogiwara H, Kalakota K, Rakhra SS, Helenowski IB, Marymont MH, Kalapurakal JA, et al. Intracranial relapse rates and patterns, and survival trends following post-resection cavity radiosurgery for patients with single intracranial metastases. *J Neuro-Oncol.* (2012) 108:141–6. doi: 10.1007/s11060-012-0808-5
- Minniti G, Esposito V, Clarke E, Scaringi C, Lanzetta G, Salvati M, et al. Multidose stereotactic radiosurgery (9 Gy x 3) of the postoperative resection

- cavity for treatment of large brain metastases. *Int J Radiat Oncol Biol Phys.* (2013) 86:623–9. doi: 10.1016/j.ijrobp.2013.03.037
26. Hartford AC, Paravati AJ, Spire WJ, Li Z, Jarvis LA, Fadul CE, et al. Postoperative stereotactic radiosurgery without whole-brain radiation therapy for brain metastases: potential role of preoperative tumor size. *Int J Radiat Oncol Biol Phys.* (2013) 85:650–5. doi: 10.1016/j.ijrobp.2012.05.027
 27. Brennan C, Yang TJ, Hilden P, Zhang Z, Chan K, Yamada Y, et al. A phase 2 trial of stereotactic radiosurgery boost after surgical resection for brain metastases. *Int J Radiat Oncol Biol Phys.* (2014) 88:130–6. doi: 10.1016/j.ijrobp.2013.09.051
 28. Jagannathan J, Yen CP, Ray DK, Schlesinger D, Oskoui RJ, Pouratian N, et al. Gamma Knife radiosurgery to the surgical cavity following resection of brain metastases. *J Neurosurg.* (2009) 111:431–8. doi: 10.3171/2008.11.JNS08818
 29. Shaw E, Scott C, Souhami L, Dinapoli R, Kline R, Loeffler J, et al. Single dose radiosurgical treatment of recurrent previously irradiated primary brain tumors and brain metastases: final report of RTOG protocol 90-05. *Int J Radiat Oncol Biol Phys.* (2000) 47:291–8. doi: 10.1016/S0360-3016(99)00507-6
 30. Mahajan A, Borden J, Tsai JS. Carcinomatous meningitis: are surgery and gamma knife radiosurgery treatment risk factors? *J Neurosurg.* (2002) 97(5 Suppl):441–4. doi: 10.3171/jns.2002.97.supplement
 31. Trifiletti DM, Romano KD, Xu Z, Reardon KA, Sheehan J. Leptomeningeal disease following stereotactic radiosurgery for brain metastases from breast cancer. *J Neuro-Oncol.* (2015) 124:421–7. doi: 10.1007/s11060-015-1854-6
 32. Patel RA, Lock D, Helenowski IB, Chandler JP, Sachdev S, Tate MC, et al. Postsurgical cavity evolution after brain metastasis resection: how soon should postoperative radiosurgery follow? *World Neurosurg.* (2018) 110:310–4. doi: 10.1016/j.wneu.2017.10.159
 33. Soliman H, Ruschin M, Angelov L, Brown PD, Chiang VLS, Kirkpatrick JP, et al. Consensus contouring guidelines for postoperative completely resected cavity stereotactic radiosurgery for brain metastases. *Int J Radiat Oncol Biol Phys.* (2018) 100:436–42. doi: 10.1016/j.ijrobp.2017.09.047
 34. Minniti G, Clarke E, Lanzetta G, Osti MF, Trasimeni G, Bozzao A, et al. Stereotactic radiosurgery for brain metastases: analysis of outcome and risk of brain radionecrosis. *Radiat Oncol* (2011) 6:48. doi: 10.1186/1748-717X-6-48
 35. Chuang MT, Liu YS, Tsai YS, Chen YC, Wang CK. Differentiating radiation-induced necrosis from recurrent brain tumor using MR perfusion and spectroscopy: a meta-analysis. *PLoS ONE* (2016) 11:e0141438. doi: 10.1371/journal.pone.0141438
 36. Barajas RF, Chang JS, Sneed PK, Segal MR, McDermott MW, Cha S. Distinguishing recurrent intra-axial metastatic tumor from radiation necrosis following gamma knife radiosurgery using dynamic susceptibility-weighted contrast-enhanced perfusion MR imaging. *Am J Neuroradiol.* (2009) 30:367–72. doi: 10.3174/ajnr.A1362
 37. Chao ST, Ahluwalia MS, Barnett GH, Stevens GH, Murphy ES, Stockham AL, et al. Challenges with the diagnosis and treatment of cerebral radiation necrosis. *Int J Radiat Oncol Biol Phys.* (2013) 87:449–57. doi: 10.1016/j.ijrobp.2013.05.015
 38. Ahmed KA, Freilich JM, Abuodeh Y, Figura N, Patel N, Sarangkasiri S, et al. Fractionated stereotactic radiotherapy to the post-operative cavity for radioresistant and radiosensitive brain metastases. *J Neuro-Oncol.* (2014) 118:179–86. doi: 10.1007/s11060-014-1417-2
 39. Dore M, Martin S, Delpon G, Clement K, Campion L, Thillays F. Stereotactic radiotherapy following surgery for brain metastasis: predictive factors for local control and radionecrosis. *Cancer Radiother.* (2017) 21:4–9. doi: 10.1016/j.canrad.2016.06.010
 40. Keller A, Dore M, Antoni D, Menoux I, Thillays F, Clavier JB, et al. [Risk of radionecrosis after hypofractionated stereotactic radiotherapy targeting the postoperative resection cavity of brain metastases]. *Cancer Radiother.* (2017) 21:377–88. doi: 10.1016/j.canrad.2017.01.017
 41. Taillibert S, Laigle-Donadey F, Chodkiewicz C, Sanson M, Hoang-Xuan K, Delattre JY. Leptomeningeal metastases from solid malignancy: a review. *J Neuro-Oncol.* (2005) 75:85–99. doi: 10.1007/s11060-004-8101-x
 42. Robbins JR, Ryu S, Kalkanis S, Cogan C, Rock J, Movsas B, et al. Radiosurgery to the surgical cavity as adjuvant therapy for resected brain metastasis. *Neurosurgery* (2012) 71:937–43. doi: 10.1227/NEU.0b013e31826909f2
 43. Atalar B, Modlin LA, Choi CY, Adler JR, Gibbs IC, Chang SD, et al. Risk of leptomeningeal disease in patients treated with stereotactic radiosurgery targeting the postoperative resection cavity for brain metastases. *Int J Radiat Oncol Biol Phys.* (2013) 87:713–8. doi: 10.1016/j.ijrobp.2013.07.034
 44. Suki D, Abouassi H, Patel AJ, Sawaya R, Weinberg JS, Groves MD. Comparative risk of leptomeningeal disease after resection or stereotactic radiosurgery for solid tumor metastasis to the posterior fossa. *J Neurosurg.* (2008) 108:248–57. doi: 10.3171/JNS/2008/108/2/0248
 45. Trifiletti DM, Lee CC, Kano H, Cohen J, Janopaul-Naylor J, Alonso-Basanta M, et al. Stereotactic radiosurgery for brainstem metastases: an international cooperative study to define response and toxicity. *Int J Radiat Oncol Biol Phys.* (2016) 96:280–8. doi: 10.1016/j.ijrobp.2016.06.009
 46. Trifiletti DM, Lee CC, Shah N, Patel NV, Chen SC, Sheehan JP. How does brainstem involvement affect prognosis in patients with limited brain metastases? results of a matched-cohort analysis. *World Neurosurg.* (2015) 88:563–8. doi: 10.1016/j.wneu.2015.10.089
 47. Patel KR, Burri SH, Boselli D, Symanowski JT, Asher AL, Sumrall A, et al. Comparing pre-operative stereotactic radiosurgery (SRS) to post-operative whole brain radiation therapy (WBRT) for resectable brain metastases: a multi-institutional analysis. *J Neuro-Oncol.* (2017) 131:611–8. doi: 10.1007/s11060-016-2334-3
 48. Mahajan A, Ahmed S, McAleer ME, Weinberg JS, Li J, Brown P, et al. Post-operative stereotactic radiosurgery versus observation for completely resected brain metastases: a single-centre, randomised, controlled, phase 3 trial. *Lancet Oncol.* (2017) 18:1040–8. doi: 10.1016/S1470-2045(17)30414-X
 49. Brown PD, Ballman KV, Cerhan JH, Anderson SK, Carrero XW, Whitton AC, et al. Postoperative stereotactic radiosurgery compared with whole brain radiotherapy for resected metastatic brain disease (NCTG N107C/CEC.3): a multicentre, randomised, controlled, phase 3 trial. *Lancet Oncol.* (2017) 18:1049–60. doi: 10.1016/S1470-2045(17)30441-2
 50. Goldberg SB, Gettinger SN, Mahajan A, Chiang AC, Herbst RS, Sznol M, et al. Pembrolizumab for patients with melanoma or non-small-cell lung cancer and untreated brain metastases: early analysis of a non-randomised, open-label, phase 2 trial. *Lancet Oncol.* (2016) 17:976–83. doi: 10.1016/S1470-2045(16)30053-5
 51. Bernstein MB, Krishnan S, Hodge JW, Chang JY. Immunotherapy and stereotactic ablative radiotherapy (ISABR): a curative approach? *Nat Rev Clin Oncol.* (2016) 13:516–24. doi: 10.1038/nrclinonc.2016.30
 52. Herskind C, Wenz F, Giordano FA. Immunotherapy combined with large fractions of radiotherapy: stereotactic radiosurgery for brain metastases—implications for intraoperative radiotherapy after resection. *Front Oncol.* (2017) 7:147. doi: 10.3389/fonc.2017.00147
 53. Kiess AP, Wolchok JD, Barker CA, Postow MA, Tabar V, Huse JT, et al. Stereotactic radiosurgery for melanoma brain metastases in patients receiving ipilimumab: safety profile and efficacy of combined treatment. *Int J Radiat Oncol Biol Phys.* (2015). 2:368–75. doi: 10.1016/j.ijrobp.2015.01.004

Conflict of Interest Statement: The authors declare that the research was conducted in the absence of any commercial or financial relationships that could be construed as a potential conflict of interest.

Copyright © 2018 Marchan, Peterson, Sio, Chaichana, Harrell, Ruiz-Garcia, Mahajan, Brown and Trifiletti. This is an open-access article distributed under the terms of the Creative Commons Attribution License (CC BY). The use, distribution or reproduction in other forums is permitted, provided the original author(s) and the copyright owner(s) are credited and that the original publication in this journal is cited, in accordance with accepted academic practice. No use, distribution or reproduction is permitted which does not comply with these terms.