



OPEN ACCESS

EDITED BY

José María Huerta,
Carlos III Health Institute (ISCIII), Spain

REVIEWED BY

Alessandro De Oliveira,
Universidade Federal de São João del-Rei,
Brazil

Antonio José Molina De La Torre,
University of León, Spain

*CORRESPONDENCE

Wei Liu

✉ 273860690liuwei@sina.com

RECEIVED 30 November 2024

ACCEPTED 21 January 2025

PUBLISHED 31 January 2025

CITATION

Liu H, Kang J, Liu W and Shen Y (2025)
Association between a body shape index and
colorectal cancer in US population:
a cross-sectional study based on NHANES.
Front. Nutr. 12:1535655.
doi: 10.3389/fnut.2025.1535655

COPYRIGHT

© 2025 Liu, Kang, Liu and Shen. This is an
open-access article distributed under the
terms of the [Creative Commons Attribution
License \(CC BY\)](https://creativecommons.org/licenses/by/4.0/). The use, distribution or
reproduction in other forums is permitted,
provided the original author(s) and the
copyright owner(s) are credited and that the
original publication in this journal is cited, in
accordance with accepted academic
practice. No use, distribution or reproduction
is permitted which does not comply with
these terms.

Association between a body shape index and colorectal cancer in US population: a cross-sectional study based on NHANES

Hui Liu¹, Jialu Kang², Wei Liu^{1*} and Yongqing Shen²

¹Department of Internal Medicine Nursing, Faculty of Nursing, Hebei University of Chinese Medicine, Shijiazhuang, Hebei, China, ²Faculty of Nursing, Hebei University of Chinese Medicine, Shijiazhuang, Hebei, China

Background: Colorectal cancer (CRC) is linked to obesity, particularly visceral fat. A more accurate measure of visceral fat accumulation is offered by a body shape index (ABSI). Currently, the direct application of the ABSI to populations with varying ethnic backgrounds might be restricted. Moreover, there is less evidence about the correlation between ABSI and CRC among individuals from different ethnical backgrounds.

Methods: A total of 40,998 individuals who took part in the National Health and Nutrition Examination Survey (NHANES) spanning from 2003 to 2023 were subjected to analysis. Logistic regression was utilized to examine the associations between the ABSI and the risk of CRC. In addition, restricted cubic spline curves (RCS) were utilized, and subgroup analyses along with interaction tests were also carried out. The receiver operating characteristic curve (ROC) was employed to predict the risk of CRC relying on various anthropometric indicators.

Results: After adjusting for covariates, ABSI demonstrated a positive association with the incidence of CRC (OR = 1.03 [95% CI: 1.01–1.05], $p = 0.018$). Individuals in the upper quartile of ABSI exhibited a greater prevalence of CRC than those in the lower quartile (OR = 1.88 [95% CI: 1.19–2.96], $p = 0.006$). RCS analysis indicated a nonlinear correlation between ABSI and CRC (P for nonlinear = 0.030). Subgroup analysis indicated a notable interaction between age and BMI subgroups (interaction $p < 0.05$), and ROC curves indicated that the ABSI was effective in predicting CRC risk (AUC = 0.658), demonstrating good sensitivity, particularly in individuals under 60 years of age.

Conclusion: A positive correlation exists between ABSI levels and the increased incidence of CRC among U.S. adults. This is especially true for people under 60 years of age (40–60 years), with a BMI below 25 kg/m², and those with a BMI of 30 kg/m² or beyond. ABSI can be used as a simple anthropometric predictor of CRC.

KEYWORDS

ABSI, colorectal cancer, visceral fat, obesity, NHANES

Introduction

Colorectal cancer (CRC), a malignant neoplasm, is witnessing an escalating prevalence on a global scale. Its morbidity and mortality figures stand among the highest in different kinds of cancers. In 2022, there were more than 1.9 million newly reported cases, and the number of fatalities reached 904,000 (1). The prevalence of colorectal cancer is rising in various nations, including China and the United States, with an increasingly younger demographic being impacted (2, 3). In light of this context, it is crucial to aggressively investigate more effective methods for the prevention and screening of CRC to significantly diminish its incidence rate.

The incidence of obesity has witnessed exponential growth on a global scale as a result of lifestyle alterations, impacting over 650 million individuals (4). In particular, it has been established that visceral obesity is a significant risk factor for CRC development (5, 6). However, it has been shown that traditional measures of obesity, like the body mass index (BMI), possess limitations when it comes to evaluating the risk of CRC, as they are unable to accurately reflect the characteristics of fat distribution (7, 8). Furthermore, the precision of BMI in gauging obesity has been cast in doubt on account of its inbuilt limitations (9). A body shape index (ABSI) was developed by Krakauer and his fellow researchers in 2012. With waist circumference (WC) being its basis, it is adjusted corresponding to height and weight. Under certain height and weight circumstances, if the ABSI is raised, it is more prone to suggest a larger portion of visceral (abdominal) fat rather than peripheral tissue (10). The index has demonstrated superior efficacy in predicting the health consequences of obesity, as elevations in the ABSI correlate with substantial increases in mortality, underscoring the insufficiency of standard obesity indicators in

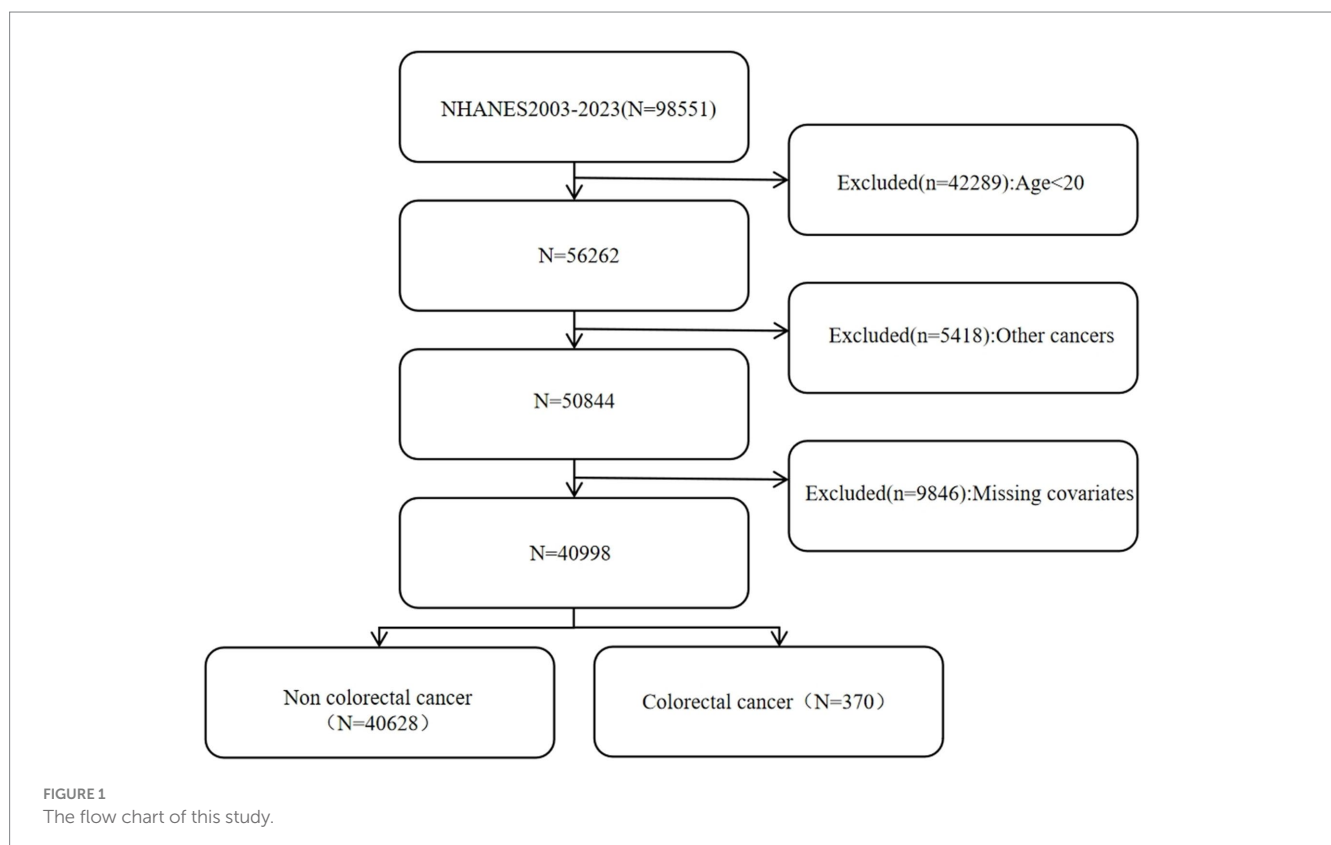
assessing health hazards (11). The ABSI effectively addresses some constraints inherent in relying solely on overall or central obesity markers, hence facilitating the investigation of relationships with cancer risk (12). Nonetheless, to date, only a restricted number of research have investigated the association between ABSI and the risk of CRC.

Therefore, this study sought to elucidate the relationship between ABSI and the incidence of CRC utilizing individual data from the National Health and Nutrition Examination Survey (NHANES) database. The objective was to investigate this correlation and formulate efficient preventative and screening measures for the incidence of CRC.

Materials and methods

Data sources

The NHANES is an ongoing cross-sectional survey that represents the nation as a whole. It employs a stratified, multistage random sampling approach and is conducted by the National Center for Health Statistics within the United States. Additionally, every participant has furnished written informed consent. All of the data can be conveniently retrieved from the NHANES website. This study analyzed 98,551 people from 2003 to 2023, removing individuals under 20 years of age, those with additional malignancies, and those missing critical covariate data. In total, 40,998 participants were incorporated into the study analysis according to stringent inclusion and exclusion criteria. The detailed steps of the specific inclusion process can be found in Figure 1.



Definition of ABSI and colorectal cancer

In this study, the exposure variable was the ABSI. The researchers collected basic anthropometric measurements from the participants, such as WC, height, and BMI. The formula for calculating the ABSI is $ABSI = WC / (BMI^{3/5} \times \text{height}^{3/5})$ (10, 13), with WC and height in meters.

Colorectal cancer was identified based on participants' answers to the medical conditions questionnaire, "Have you ever been informed that you have cancer or a malignant tumor?" "What type of cancer was it?" Only participants who identified colon and rectal cancer were noted.

Temporal points for data collecting

Anthropometric data, including WC, height, and weight, were collected during participants' visits to the Mobile Examination Center (MEC). These measurements were obtained at specific time points within the survey period. Information regarding colorectal cancer was collected through self-reported questionnaires. Notably, the time of cancer diagnosis was not directly correlated with the timing of the anthropometric data collection. Consequently, the study design operated under the assumption that the anthropometric data reflected the participants' health status at the time of the survey. Any case of colorectal cancer diagnosed subsequent to the survey visit was regarded as a later-occurring event.

Covariates

This study evaluated covariates such as age, gender, ethnicity, BMI, ratio of family income to poverty (PIR), education level (\leq high school, $>$ high school), smoking, drinking status, exercise, and diabetes. Smoking: Classified as yes (smoked ≥ 100 cigs in life) or no based on the questionnaire. Drinking status: Divided into drinkers (affirmative to "consume 4/5 cups or more/day") and non-drinkers. Exercise: Those doing vigorous exercise etc. for ≥ 10 min weekly are exercisers. Diabetes: Determined by self-report of diagnosis or blood sample with glycated Hb $\geq 6.5\%$. Data was collected via NHANES' standardized questionnaires & interview protocols. The waist-to-height ratio (WHtR) was computed by taking the waist circumference, measured in centimeters, and dividing it by the height, which was also measured in the same unit of centimeters. In terms of the body roundness index (BRI), the following formula was employed to compute it: $BRI = 364.2 - 365.5 \times (1 - [wc(m)/2\pi]^2 / [0.5 \times \text{height}(m)]^2)^{3/5}$ (14, 15).

Statistical analysis

Due to the multi-stage probability sampling in NHANES, sample weights were incorporated into the analytical procedure. At the outset, a univariate analysis was carried out to compare the individual baseline characteristics of the participants. The presentation of continuous variables was as the weighted mean \pm standard deviation (SD). To evaluate the differences in average levels between groups, *t*-tests were used. Categorical variables, on the other hand, were expressed as actual frequencies and weighted percentages, and chi-square tests were utilized

to compare their distributions among different groups. To analyze the connection between ABSI and CRC, logistic regression models were employed. The outcomes were presented as odds ratios (OR) and 95% confidence intervals (CI). Three separate models were devised: Model 1, which remained unadjusted for covariates; Model 2, which was adjusted for age, gender, and race; and Model 3, which was adjusted for all relevant elements. The same procedure was applied to look into the correlation among ABSI quartiles, considering the lowest quartile as the reference. We also used restricted cubic spline curves (RCS) to explore potential non-linear relationships. Furthermore, subgroup analyses were carried out with respect to diverse factors including age, gender, exercise, diabetes, and BMI. The aim of these subgroup analyses was to investigate the disparities and possible variations within different subgroups as well as to evaluate the interactions among them. Finally, after carrying out the adjustment for all covariates, an examination was conducted on the receiver operating characteristic (ROC) curves of the subjects. The area under the curve (AUC) of ABSI was compared with that of other factors such as the BRI, the WHtR, WC, BMI, and weight. Additionally, the AUC of ABSI was compared by categorizing the individuals based on age (≥ 60 and < 60). All of the statistical analyses were performed with the utilization of R (version 4.2.0) and EmpowerStats software (version 4.2). It was considered that a *p* value less than 0.05 signified a statistically significant difference.

Results

Baseline characterization

The baseline characteristics of the two groups of study participants divided according to whether they had colorectal cancer are shown in Table 1. The group without CRC had 40,628 participants, while the group with CRC included 370 participants. The mean age of the group with colorectal cancer was 67.40 ± 13.57 years. In the group free from colorectal cancer, the average ABSI was 0.081 ± 0.005 , whereas in the group having colorectal cancer, it was 0.084 ± 0.004 . Notable differences were observed between these two groups regarding a diverse range of factors, namely age, BMI, WC, WHtR, ABSI, BRI, ethnicity, education level, drinking habits, diabetes status, exercise frequency, and smoking status (all with $p < 0.05$). Table 2 is categorized based on the ABSI quartiles. The findings indicated a progressive rise in mean age from 36.90 ± 13.26 years in the Q1 group to 56.49 ± 15.51 years in the Q4 group. A substantial disparity existed among the four tertile groups regarding the presence or absence of CRC ($p < 0.001$). 0.13% (24) of the Q1 cohort had colorectal cancer; 0.49% (59) of the Q2 cohort had CRC; 1.07% (136) of the Q3 cohort had colorectal cancer; and 1.15% (151) of the Q4 cohort had CRC. With the rise in quartiles, there was a corresponding increase in the incidence of CRC cases. This may indicate that specific factors pertaining to the quartiles are maybe linked to the chance of acquiring CRC. Moreover, substantial disparities were seen among the ABSI quartile groups concerning other characteristics (all $p < 0.001$).

The relationship between ABSI and CRC

To evaluate the association between ABSI and CRC, we employed logistic regression analysis (Table 3). When ABSI was analyzed as a

TABLE 1 Baseline characteristics of the study population classified according to colorectal cancer.

Variable	Participants without colorectal cancer (N = 40,628)	Participants with prior colorectal cancer (N = 370)	p-value
Age, years	45.32 ± 16.16	67.40 ± 13.57	<0.001
PIR	3.00 ± 1.64	2.86 ± 1.57	0.449
Weight, kg	82.95 ± 21.77	82.01 ± 18.88	0.392
Height, cm	168.74 ± 10.05	167.14 ± 9.78	0.176
BMI, kg/m ²	29.05 ± 6.92	29.21 ± 5.94	0.037
WC, cm	98.83 ± 16.23	102.52 ± 13.95	<0.001
WHtR	0.59 ± 0.10	0.61 ± 0.08	<0.001
ABSI	0.081 ± 0.005	0.084 ± 0.004	<0.001
BRI	5.31 ± 2.27	5.90 ± 2.05	<0.001
Gender, N (weighted %)			0.692
Male	19,564 (48.71)	182 (45.63)	
Female	21,064 (51.29)	188 (54.37)	
Race, N (weighted %)			<0.001
Mexican American	6,183 (8.57)	20 (2.59)	
Other Hispanic	3,711 (5.98)	26 (3.27)	
Non-Hispanic White	17,352 (65.65)	225 (77.24)	
Non-Hispanic Black	8,811 (11.65)	75 (9.65)	
Other Race	4,571 (8.15)	24 (7.25)	
Levels of education, N (weighted %)			0.007
≤High school	18,676 (38.79)	196 (41.99)	
>High school	21,952 (61.21)	174 (58.01)	
Drinking status, N (weighted %)			<0.001
Yes	13,902 (30.26)	157 (35.39)	
No	26,726 (69.74)	213 (64.61)	
Diabetes, N (weighted %)			<0.001
Yes	6,029 (10.85)	115 (25.32)	
No	34,599 (89.15)	255 (74.68)	
Exercise, N (weighted %)			<0.001
Yes	10,917 (31.29)	34 (9.92)	
No	29,711 (68.71)	336 (90.08)	
Smoking, N (weighted %)			<0.001
Yes	17,667 (43.64)	206 (54.66)	
No	22,961 (56.36)	164 (45.34)	

continuous variable without any adjustments, the OR for the association between ABSI and CRC was found to be 1.12 (95% CI: 1.10–1.14, and $p < 0.001$). In Model 2, after making adjustments for gender, age, and race, OR = 1.05 [95% CI: 1.03–1.07], and $p < 0.001$. After fully adjusting for covariables, OR = 1.03 [95% CI: 1.01–1.05], with $p = 0.018$. Each of the above-cited models showed a positive connection between ABSI and CRC. Furthermore, we converted ABSI into a four-category variable for the purpose of sensitivity analysis, which provided further support for this finding. In Model 3, compared to the Q1 group, the Q2 group had (OR = 1.60 [95% CI: 0.99–2.59], $p = 0.054$). The Q3 group had (OR = 2.50 [95% CI: 1.60–3.91], $p < 0.001$). And the Q4 group had (OR = 1.88 [95% CI: 1.19–2.96],

$p = 0.006$). Trend analyses showed that all 3 models had statistical significance. In Model 1, the trend p value was <0.001 . In Model 2, the trend p value was also <0.001 . In Model 3, the trend p value was = 0.017. This further substantiates that when the ABSI quartiles rise, there may be a progressively increasing trend in the incidence of CRC. Furthermore, RCS analysis confirmed a significant non-linear correlation between ABSI and CRC. Figure 2 shows a significant overall trend (P for overall = 0.014) and a non-linear association (P for nonlinear = 0.030) between ABSI and CRC. When the ABSI value was approximately 0.082, the curve shifted from a relatively gentle upward trend to a steeper one. This indicates that as the ABSI value increases, the risk of CRC also rises.

TABLE 2 Baseline characteristics of study subjects classified by quartiles of ABSI score.

Variable	Q1 (N = 10,250)	Q2 (N = 10,249)	Q3 (N = 10,249)	Q4 (N = 10,250)	p-value
Age, years	36.90 ± 13.26	42.43 ± 14.14	48.16 ± 15.62	56.49 ± 15.51	<0.001
PIR	3.00 ± 1.65	3.11 ± 1.64	2.99 ± 1.65	2.87 ± 1.62	<0.001
Weight, kg	79.70 ± 20.98	83.09 ± 21.51	84.97 ± 22.99	84.39 ± 21.09	<0.001
Height, cm	167.59 ± 9.75	169.18 ± 9.94	169.00 ± 10.14	169.25 ± 10.35	<0.001
BMI, kg/m ²	28.42 ± 7.41	28.94 ± 6.76	29.62 ± 7.12	29.30 ± 6.11	<0.001
WC, cm	90.18 ± 14.94	97.55 ± 15.17	101.93 ± 14.47	107.46 ± 15.27	<0.001
WHtR	0.54 ± 0.09	0.58 ± 0.09	0.60 ± 0.09	0.64 ± 0.09	<0.001
BRI	4.31 ± 2.13	5.09 ± 2.14	5.67 ± 2.09	6.42 ± 2.22	<0.001
Gender, N (weighted %)					<0.001
Male	4,138 (39.43)	5,016 (50.90)	5,144 (51.79)	5,448 (53.67)	
Female	6,112 (60.57)	5,233 (49.10)	5,105 (48.21)	4,802 (46.33)	
Race, N (weighted %)					<0.001
Mexican American	1,224 (7.63)	1,707 (9.74)	1,711 (9.45)	1,561 (7.10)	
Other Hispanic	929 (6.71)	983 (6.31)	983 (5.99)	842 (4.60)	
Non-Hispanic White	3,663 (59.18)	4,204 (64.72)	4,375 (66.65)	5,335 (73.82)	
Non-Hispanic Black	3,268 (18.13)	2,133 (10.63)	2,015 (10.06)	1,470 (6.83)	
Other Race	1,166 (8.35)	1,222 (8.60)	1,165 (7.85)	1,042 (7.65)	
Levels of education, N (weighted %)					<0.001
≤High school	3,868 (32.42)	4,451 (36.37)	5,046 (42.09)	5,507 (45.82)	
>High school	6,382 (67.58)	5,798 (63.63)	5,203 (57.91)	4,743 (54.18)	
Drinking status, N (weighted %)					<0.001
Yes	2,916 (25.16)	3,152 (26.91)	4,053 (36.15)	3,938 (34.08)	
No	7,334 (74.84)	7,097 (73.09)	6,196 (63.85)	6,312 (65.92)	
Diabetes, N (weighted %)					<0.001
Yes	591 (4.12)	1,074 (7.34)	1,791 (13.32)	2,688 (20.91)	
No	9,659 (95.88)	9,175 (92.66)	8,458 (86.68)	7,562 (79.09)	
Exercise, N (weighted %)					<0.001
Yes	4,325 (46.10)	3,072 (33.95)	2,140 (24.79)	1,414 (16.79)	
No	5,925 (53.90)	7,177 (66.05)	8,109 (75.21)	8,836 (83.21)	
Smoking, N (weighted %)					<0.001
Yes	3,568 (35.27)	4,177 (40.78)	4,698 (46.80)	5,430 (54.01)	
No	6,682 (64.73)	6,072 (59.22)	5,551 (53.20)	4,820 (45.99)	
Colorectal cancer, N (weighted %)					<0.001
No	10,226 (99.87)	10,190 (99.51)	10,113 (98.93)	10,099 (98.85)	
Yes	24 (0.13)	59 (0.49)	136 (1.07)	151 (1.15)	

Subgroup analysis

In the subgroup analysis, we delved deeper into exploring how gender, age, exercise, diabetes, and BMI impact the relationship between ABSI and CRC, as depicted in Figure 3. A significant interaction was detected between different age subgroups and the correlation between ABSI and CRC. Specifically, for those with an age less than 60, the OR was 1.10 [with a 95% CI of 1.04–1.17]; while for those aged 60 or above, the OR was 0.99 [95% CI: 0.96–1.02], and the interaction *p* value was 0.001. This clearly shows that age has a substantial influence on the relationship between ABSI and CRC. To

further explore the role of age, we conducted additional analyses using four age groups: 20–40 years old, 40–60 years old, 60–80 years old, and 80 years old and above. The findings indicated that the correlation between ABSI and CRC was most pronounced in the 40 to 60-year-old age demographic, exhibiting an OR of 1.10 [95% CI: 1.03–1.17] and an interaction *p* value of 0.012. Moreover, it is noteworthy that BMI also affects the relationship between ABSI and CRC, presenting a certain level of complexity. For individuals with a BMI less than 25, the OR was 1.07 [95% CI: 1.02–1.12]; and for those with a BMI of 30 or higher, the OR was 1.04 [95% CI: 1.01–1.08], with an interaction *p* value of 0.040. In contrast, no notable interactions were detected in

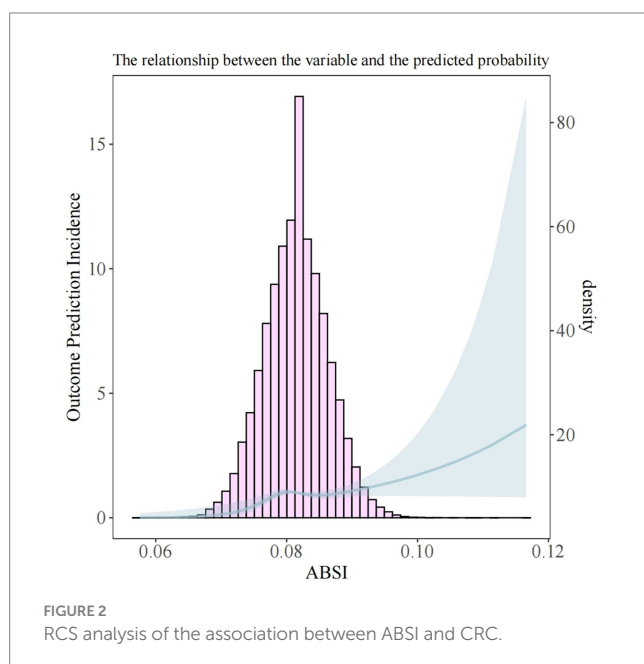
TABLE 3 Association between ABSI and CRC.

Exposure	Model 1 OR (95%CI)	p-value	Model 2 OR (95%CI)	p-value	Model 3 OR (95%CI)	p value
ABSI	1.12 (1.10, 1.14)	<0.001	1.05 (1.03, 1.07)	<0.001	1.03 (1.01, 1.05)	0.018
ABSI quartiles						
Q1 (0.058, 0.078)	Ref		Ref		Ref	
Q2 (0.078, 0.082)	2.47 (1.53, 3.97)	<0.001	1.71 (1.06, 2.77)	0.028	1.60 (0.99, 2.59)	0.054
Q3 (0.082, 0.085)	5.73 (3.71, 8.85)	<0.001	2.96 (1.90, 4.61)	<0.001	2.50 (1.60, 3.91)	<0.001
Q4 (0.085, 0.117)	6.37 (4.14, 9.81)	<0.001	2.42 (1.55, 3.78)	<0.001	1.88 (1.19, 2.96)	0.006
P for trend	<0.001		<0.001		0.017	

Model 1: No covariates were adjusted.

Model 2: Adjust for age, gender, race.

Model 3: Adjust age, gender, race, PIR, BMI, levels of education, smoking, drinking status, exercise, diabetes.



the remaining categories since all of the interaction *p* values within these instances were higher than 0.05.

ROC curve analysis of ABSI vs. other anthropometric indicators

We compared the diagnostic efficacy of the ABSI with that of other anthropometric measures regarding the prevalence of CRC. The findings are shown in Figure 4. In the case of ABSI, the optimal cut-off value was determined to be 0.082, accompanied by a specificity of 0.5267 and a sensitivity of 0.7649. Additionally, it can be seen from Figure 4 that the performance of ABSI outperformed that of BRI, WHtR, WC, BMI, and Weight (*AUC* = 0.658). We further classified the subjects based on their age. For those who were younger than 60 years old, the value of 0.0801 was established as the optimal cut-off value of the ABSI. At this cut-off, the specificity was 0.4746 and the sensitivity was 0.7869. In the case of individuals who were 60 years old or older, the value of 0.0822 was established as the optimal cut-off

value of the ABSI. Here, the specificity was 0.6684 and the sensitivity was 0.4369. The *AUC* of ABSI for those younger than 60 years old (*AUC* = 0.647) was significantly higher than that for those aged 60 years or older (*AUC* = 0.502), as depicted in Figure 4. The performance of various anthropometric indicators in predicting colorectal cancer differs. On the whole, ABSI holds certain value in predicting colorectal cancer, particularly demonstrating a relatively high sensitivity among individuals younger than 60 years old. Meanwhile, other indicators such as BRI, WHtR, WC, BMI, and Weight also possess some predictive capabilities for colorectal cancer to varying degrees (with *AUC* > 0.5).

Discussion

This study represents the first investigation to comprehensively analyze the relationship between ABSI and CRC in a broad population across the United States, leveraging the NHANES dataset. We additionally included and examined the most recent NHANES data from 2003 to 2023. The results indicated that ABSI is positively correlated with an increased incidence of CRC. This correlation remained significant even after taking all variables into account. In the subgroup analyses carried out according to age and BMI, a significant interaction between the ABSI and CRC was detected. In ROC analysis, we discovered that the association of ABSI with CRC exceeded that of other obesity indices, indicating that ABSI may be more precise than other obesity-related metrics in predicting CRC. The data revealed that the predictive capacity and accuracy of the ABSI for CRC were higher in individuals under 60 years of age than in those who were 60 years old or older. These findings suggest directions for further research and propose that, in clinical practice, ABSI should be considered as an auxiliary tool for risk assessment, especially for specific population subgroups such as those aged less than 60 years, and those with varying BMI categories. This would enable the formulation of more targeted preventive interventions.

Among the various factors associated with cancer development, visceral obesity is more likely to be a key carcinogenic factor than overall fat (16). Research has indicated that visceral obesity is a prevalent disease that is typically accompanied by low adiponectin levels. Moreover, it is a firmly recognized risk factor for CRC (17). This is because visceral obesity triggers a series of complex pathophysiological changes that further increase the risk of cancer (18–20). For instance, several pro-inflammatory

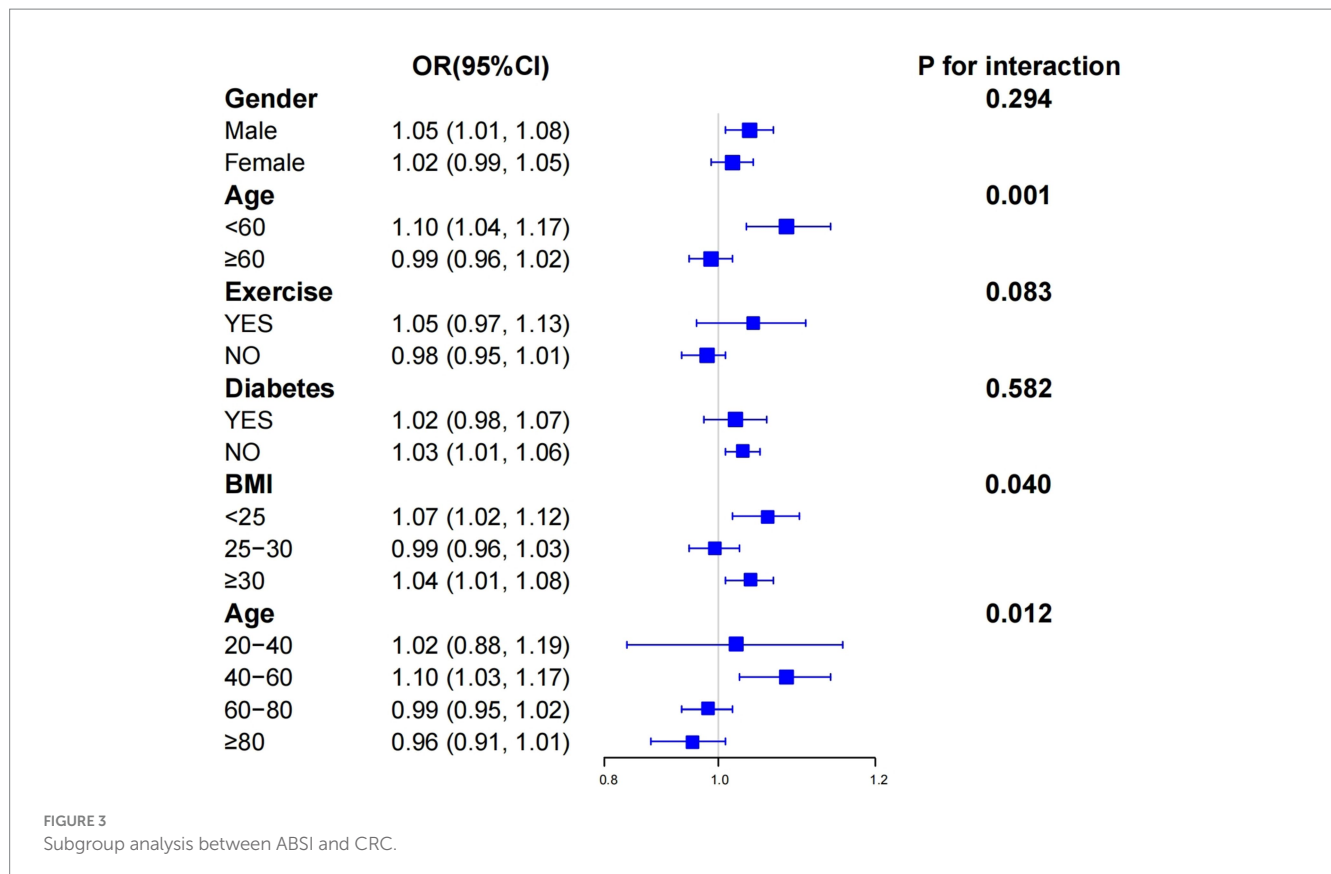


FIGURE 3
Subgroup analysis between ABSI and CRC.

cytokines like tumor necrosis factor- α (TNF- α) and interleukin-6 (IL-6) are secreted by visceral adipose tissue (5). These cytokines keep the immune system activated continuously, thereby leading to a state of chronic inflammation. Prolonged chronic inflammation can result in recurrent damage and repair of the colorectal mucosal epithelial cells, heightening the probability of genetic alterations and hence facilitating the onset and progression of colorectal cancer (21, 22). Furthermore, adipose tissue, especially the visceral fat within it, can cause the levels of insulin and insulin-like growth factor-I (IGF-I) in the serum to go up. It can also prompt the release of leptin and adiponectin. These alterations significantly contribute to the etiology of cancer (23). Computed tomography (CT) and magnetic resonance imaging (MRI) are commonly used to measure the distribution of visceral fat. Nevertheless, these techniques are expensive, take a lot of time, and are not appropriate for large-scale epidemiologic studies (24). Consequently, a straightforward clinical anthropometric index, the ABSI, is suggested for assessing visceral fat. The ABSI is founded on the notion of anisotropic growth in calculating BMI and has successfully developed BMI-independent alternatives to waist indices (10). From a statistical perspective, the ABSI has no dependence on height, BMI, and WC, and more accurately represents visceral adiposity than conventional anthropometric measures. Anthropometric measurements more accurately represent visceral obesity compared to conventional anthropometric assessments (25). In contrast to other novel anthropometric measures like the BRI, the ABSI has something to do with increased cancer risk in numerous spots (26), whereas the BRI has infrequently been connected with cancer (15). This suggests that the ABSI is more centered on measuring visceral fat, which is highly relevant to the incidence of cancer.

In recent years, the ABSI has gained increasing recognition for measuring visceral fat accumulation and its impact (27, 28). Studies have

also demonstrated a positive relation between ABSI and the risk of neurological diseases (13), cardiovascular diseases (7), and all-cause mortality (29). Moreover, an increasing amount of research is exploring the connection between the ABSI and cancer risk. Studies regarding the UK Biobank cohort have shown that ABSI is markedly linked to a greater risk of five particular malignancies, among which are lung cancer and CRC, and the overall risk of developing cancer as well (26). A cohort research from the Guangzhou Biobank in China, with a 14-year follow-up, manifested a positive linkage between ABSI and an augmented risk of CRC (30). An analysis that combined and involved collaboration of 11 Australian cohorts showed that ABSI correlates with total cancer and CRC in both genders, but not with prostate cancer (31). Nevertheless, research on the American NHANES database finds that higher ABSI levels are closely linked to prostate cancer risk and its related death rates (25, 32). This indicates that ABSI may be subject to certain limitations when directly applied to populations with different ethnic backgrounds, and the current evidence regarding the relationship of ABSI to CRC remains comparatively limited. Consequently, we undertook a comprehensive examination of the relationship between ABSI and CRC within the American populace. Our study results show that ABSI has a positive relation with a higher risk of CRC, particularly in specific demographics where this association is more significant. Furthermore, to explore the relationship between ABSI and CRC more comprehensively, we conducted an in-depth analysis and comparison of relevant studies. A study based on NHANES data from 1999 to 2018 investigated the association between ABSI and the risk of CRC among patients with metabolic syndrome. It was found that, in this patient group, a higher ABSI was significantly associated with an increased risk of developing CRC (33). In contrast, our study, based on a broader population in the United States, has further expanded the scope of research on the

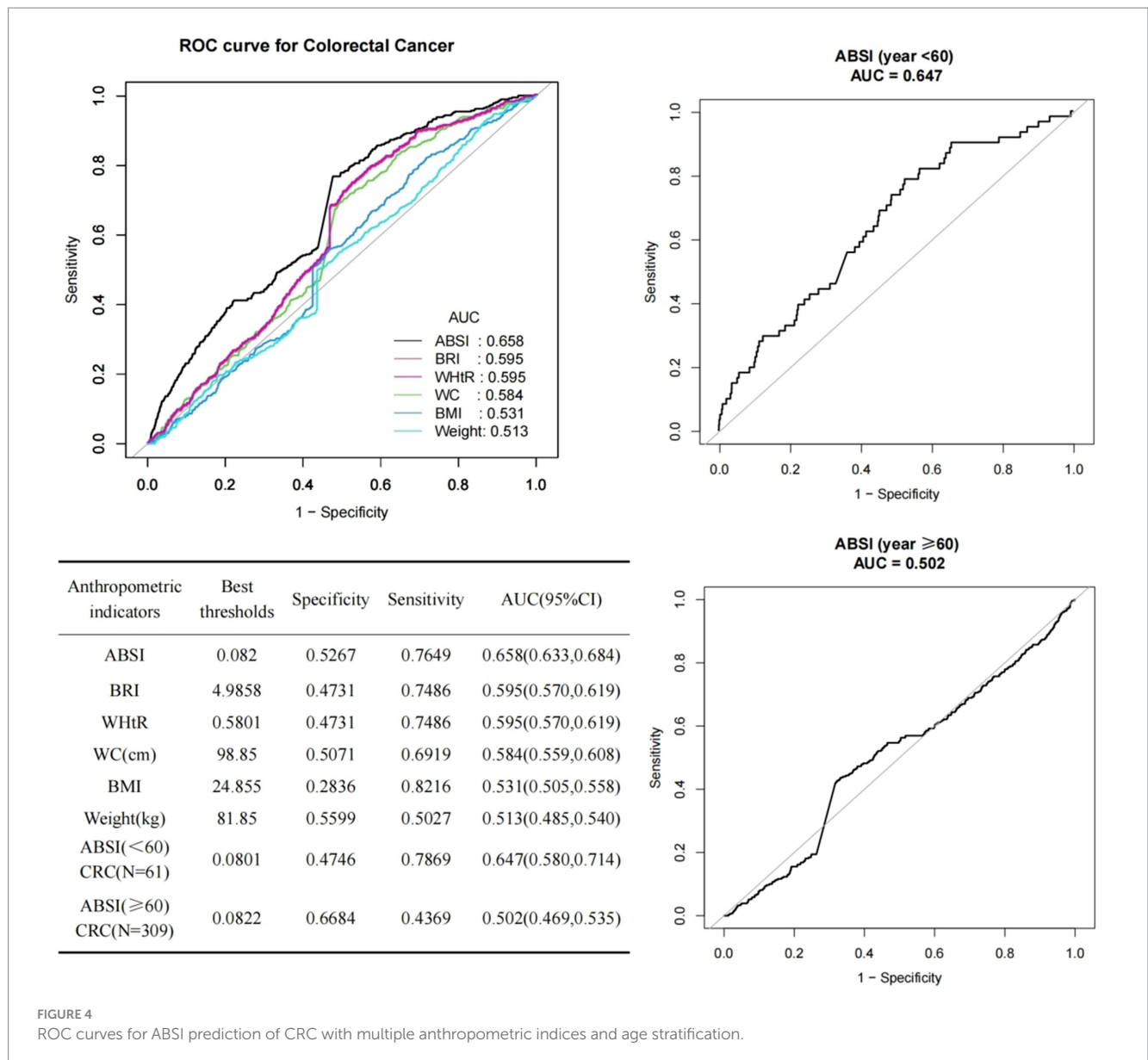


FIGURE 4 ROC curves for ABSI prediction of CRC with multiple anthropometric indices and age stratification.

relationship between ABSI and CRC. Although the research subjects differ, both studies highlight the importance of ABSI in assessing the risk of CRC. Moreover, the results of our study, to some extent, corroborate those of the previous study, indicating that ABSI may be an important predictor of CRC, not restricted by the single factor of metabolic syndrome. Christakoudi et al. revealed the association between body shape phenotypes and imaging-based body composition measurements, as well as their relationship with colon cancer (34). Their research demonstrated that body shape phenotypes defined by ABSI and hip index (HI) were closely related to body composition and could reflect differences therein, such as variations in the distribution of visceral adipose tissue (VAT) and abdominal subcutaneous adipose tissue (ASAT). These differences were associated with the risk of colon cancer. Our study also detected an association between ABSI and CRC, further supporting the crucial role of body composition, especially abdominal fat distribution, in the pathogenesis of CRC. Rontogianni et al. provided new evidence for the causal relationship between body shape indices and the risk of CRC through a Mendelian randomization study (35). They discovered a

potential positive causal correlation between the allometric index ABSI, waist-hip index (WHI), and CRC, which was independent of traditional waist-circumference indices and BMI. The results of our study echo theirs, further strengthening the reliability of ABSI as a risk predictor for CRC. Simultaneously, this also provides a direction for more in-depth research on causal mechanisms in the future.

In this study, we also found that the association between ABSI and CRC risk was more pronounced, especially in the subgroup of individuals under 60 years old (40–60 years old). The subgroup analysis accurately pinpointed the age range of 40–60 years old, where the association was significant, revealing the close connection between ABSI and CRC risk in this age group. In addition, the ROC analysis, as a supplementary tool for exploring the overall age-related trends in this study, showed that ABSI had a certain value in predicting CRC risk, especially in the population under 60 years old, where it exhibited high sensitivity. The results of these two analyses are closely related and refer to each other. From a more macroscopic perspective, that is, the grouping of ages ≥60 years old and < 60 years old, the ROC analysis

helps us to grasp the overall trend of the predictive ability of ABSI with age, further confirming the findings of the subgroup analysis and emphasizing the importance of age as a modifying factor when considering the relationship between ABSI and CRC risk. This finding is consistent with what Krakauer et al. pointed out regarding the high correlation between ABSI and age, and is in line with previous research results, indicating that within this age range, ABSI might be an effective risk predictor (33). Specifically, the higher metabolic rate in younger people may amplify the impact of abdominal fat distribution on subsequent health outcomes (36). Additionally, unhealthy lifestyle behaviors, such as sedentary habits and poor dietary choices, are more prevalent among middle-aged individuals (37). This may further exacerbate the association between ABSI and the risk of CRC. As people age, the clinical manifestations of elderly patients tend to be more complex, often accompanied by multiple comorbidities. In this age group, the influence of ABSI still exists, but it may be masked by other factors, such as genetic factors and past medical history. Elderly patients may experience vague symptoms such as weight loss and decreased appetite, which are often attributed to aging rather than cancer (30). This thus influences the correlation between ABSI and CRC. These combined factors can explain the differences in the strength of the association between ABSI and CRC observed in different age subgroups.

To date, no study has explored the correlation between ABSI and the risk of CRC in the general population of the United States. The large sample size is another advantage of this study. However, we cannot overlook the limitations of the research. This study was conducted based on the cross-sectional survey data of NHANES. This approach may introduce temporal bias in the reference time points between anthropometric measurements and CRC. The relationship between anthropometric data and the risk of CRC may change over time, and the cross-sectional design restricts the ability to clarify causal relationships. Thus, it is impossible to rule out the possibility of reverse causation or bidirectional causation. Secondly, even after adjusting for some potential confounding variables in the statistical analysis, there may still be undetected confounding factors, which could affect the accuracy of the results. Finally, NHANES did not collect imaging and pathological data from its participants. Therefore, relying on self-reported CRC data may introduce information bias. Especially among the elderly population, due to memory decline, insufficient disease awareness, or limited access to medical care, they may not accurately report their CRC status, leading to an underestimation of the number of CRC cases and thus affecting the accuracy of the research results. Future research should adopt more objective cancer diagnosis methods, such as integrating clinical examination data and medical records, to reduce the bias caused by self-reporting. Meanwhile, more detailed survey plans can be designed for different age groups to improve the accuracy of the data.

Conclusion

This study finds that a bigger ABSI is tied to a higher CRC risk, especially for people under 60 years of age (40–60 years) and those with different BMI types. Compared to traditional anthropometric measurements, ABSI has a unique value in predicting CRC. Notably, it shows enhanced sensitivity in those aged less than 60 years. Future studies should explore the precise mechanisms of ABSI and CRC to formulate novel strategies for decreasing incidence rates. Furthermore, public health education must be enhanced to promote food regulation,

consistent physical activity to diminish visceral fat buildup, and the endorsement of healthy lifestyles to mitigate the risk of CRC.

Data availability statement

Publicly available datasets were analyzed in this study. This data can be found here: <http://www.cdc.gov/nchs/nhanes.htm>.

Ethics statement

The studies involving humans were approved by NCHS Ethics Review Board (ERB) Approval. The studies were conducted in accordance with the local legislation and institutional requirements. The participants provided their written informed consent to participate in this study.

Author contributions

HL: Conceptualization, Data curation, Formal analysis, Writing – original draft. JK: Data curation, Validation, Writing – review & editing. WL: Funding acquisition, Project administration, Supervision, Writing – review & editing. YS: Investigation, Resources, Supervision, Writing – review & editing.

Funding

The author(s) declare that financial support was received for the research, authorship, and/or publication of this article. This study was supported by the Humanities and Social Sciences Research Planning Fund Project of the Ministry of Education in 2018 (18YJAZH074); the Teaching Reform Research Project of Postgraduate Education in 2024 (XYJG2024003); and the Project of Provincial Colleges and Universities' Basic Scientific Research Operating Expenses Project in 2024 (TDSK2024001).

Acknowledgments

All authors thank the staff involved in the establishment and maintenance of the NHANES database. Additionally, the authors would like to express their gratitude to the Hebei Key Laboratory of Health Care with Traditional Chinese Medicine for their support and contributions.

Conflict of interest

The authors declare that the research was conducted in the absence of any commercial or financial relationships that could be construed as a potential conflict of interest.

Generative AI statement

The authors declare that no Gen AI was used in the creation of this manuscript.

Publisher's note

All claims expressed in this article are solely those of the authors and do not necessarily represent those of their affiliated

organizations, or those of the publisher, the editors and the reviewers. Any product that may be evaluated in this article, or claim that may be made by its manufacturer, is not guaranteed or endorsed by the publisher.

References

- Bray F, Laversanne M, Sung H, Ferlay J, Siegel RL, Soerjomataram I, et al. Global cancer statistics 2022: GLOBOCAN estimates of incidence and mortality worldwide for 36 cancers in 185 countries. *CA Cancer J Clin.* (2024) 74:229–63. doi: 10.3322/caac.21834
- Lui RN, Tsoi KKF, Ho JMW, Lo CM, Chan FCH, Kyaw MH, et al. Global increasing incidence of young-onset colorectal Cancer across 5 continents: a Joinpoint regression analysis of 1, 922, 167 cases. *Cancer Epidemiol Biomarkers Prev.* (2019) 28:1275–82. doi: 10.1158/1055-9965.EPI-18-1111
- Siegel RL, Fedewa SA, Anderson WF, Miller KD, Ma J, Rosenberg PS, et al. Colorectal cancer incidence patterns in the United States, 1974–2013. *J Natl Cancer Inst.* (2017) 109:27–32. doi: 10.1093/jnci/djw322
- De Wit DF, Hanssen NMJ, Wortelboer K, Herrema H, Rampanelli E, Nieuwedorp M. Evidence for the contribution of the gut microbiome to obesity and its reversal. *Sci Transl Med.* (2023) 15:eadg2773. doi: 10.1126/scitranslmed.adg2773
- Tilg H, Moschen AR. Mechanisms behind the link between obesity and gastrointestinal cancers. *Best Pract Res Clin Gastroenterol.* (2014) 28:599–610. doi: 10.1016/j.bpg.2014.07.006
- Chaplin A, Rodriguez RM, Segura-Sampedro JJ, Ochogavía-Seguí A, Romaguera D, Barceló-Coblijn G. Insights behind the relationship between colorectal Cancer and obesity: is visceral adipose tissue the missing link? *Int J Mol Sci.* (2022) 23:13128. doi: 10.3390/ijms232113128
- Calderón-García JF, Roncero-Martín R, Rico-Martín S, De Nicolás-Jiménez JM, López-Espuela F, Santano-Mogena E, et al. Effectiveness of body roundness index (BRI) and a body shape index (ABSI) in predicting hypertension: a systematic review and Meta-analysis of observational studies. *Int J Environ Res Public Health.* (2021) 18:11607. doi: 10.3390/ijerph182111607
- Moltrre M, Pala L, Cosentino C, Mannucci E, Rotella CM, Cresci B. Body mass index (BMI), waist circumference (WC), waist-to-height ratio (WtHR) e waist body mass index (wBMI): which is better? *Endocrine.* (2022) 76:578–83. doi: 10.1007/s12020-022-03030-x
- Donini LM, Pinto A, Giusti AM, Lenzi A, Poggiogalle E. Obesity or BMI paradox? Beneath the tip of the iceberg. *Front Nutr.* (2020) 7:53. doi: 10.3389/fnut.2020.00053
- Krakauer NY, Krakauer JC. A new body shape index predicts mortality hazard independently of body mass index. *PLoS One.* (2012) 7:e39504. doi: 10.1371/journal.pone.0039504
- Sardarinia M, Ansari R, Azizi F, Hadaegh F, Bozorgmanesh M. Mortality prediction of a body shape index versus traditional anthropometric measures in an Iranian population: Tehran lipid and glucose study. *Nutrition.* (2017) 33:105–112. doi: 10.1016/j.nut.2016.05.004. doi: 10.1016/j.nut.2016.05.004
- Christakoudi S, Tsilidis KK, Muller DC, Freisling H, Weiderpass E, Overvad K, et al. A body shape index (ABSI) achieves better mortality risk stratification than alternative indices of abdominal obesity: results from a large European cohort. *Sci Rep.* (2020) 10:14541. doi: 10.1038/s41598-020-71302-5
- Huang W, Xiao Y, Zhang L, Liu H. Association between a body shape index and Parkinson's disease: a large cross-sectional study from NHANES. *Heliyon.* (2024) 10:e26557. doi: 10.1016/j.heliyon.2024.e26557
- Thomas DM, Bredlau C, Bosity-Westphal A, Mueller M, Shen W, Gallagher D, et al. Relationships between body roundness with body fat and visceral adipose tissue emerging from a new geometrical model. *Obesity (Silver Spring).* (2013) 21:2264–71. doi: 10.1002/oby.20408
- Gao W, Jin L, Li D, Zhang Y, Zhao W, Zhao Y, et al. The association between the body roundness index and the risk of colorectal cancer: a cross-sectional study. *Lipids Health Dis.* (2023) 22:53. doi: 10.1186/s12944-023-01814-2
- Silveira EA, Kliemann N, Noll M, Sarrafzadegan N, de Oliveira C. Visceral obesity and incident cancer and cardiovascular disease: an integrative review of the epidemiological evidence. *Obes Rev.* (2021) 22:e13088. doi: 10.1111/obr.13088
- Cust AE, Stocks T, Lukanova A, Lundin E, Hallmans G, Kaaks R, et al. The influence of overweight and insulin resistance on breast cancer risk and tumour stage at diagnosis: a prospective study. *Breast Cancer Res Treat.* (2009) 113:567–76. doi: 10.1007/s10549-008-9958-8
- Avgerinos KI, Spyrou N, Mantzoros CS, Dalamaga M. Obesity and cancer risk: emerging biological mechanisms and perspectives. *Metabolism.* (2019) 92:121–35. doi: 10.1016/j.metabol.2018.11.001
- Murphy N, Jenab M, Gunter MJ. Adiposity and gastrointestinal cancers: epidemiology, mechanisms and future directions. *Nat Rev Gastroenterol Hepatol.* (2018) 15:659–70. doi: 10.1038/s41575-018-0038-1
- Deng T, Lyon CJ, Bergin S, Caligiuri MA, Hsueh WA. Obesity, inflammation, and Cancer. *Annu Rev Pathol.* (2016) 11:421–49. doi: 10.1146/annurev-pathol-012615-044359
- Tarasjuk A, Mosińska P, Fichna J. The mechanisms linking obesity to colon cancer: an overview. *Obes Res Clin Pract.* (2018) 12:251–9. doi: 10.1016/j.orcp.2018.01.005
- Iyengar NM, Gucalp A, Dannenberg AJ, Hudis CA. Obesity and Cancer mechanisms: tumor microenvironment and inflammation. *J Clin Oncol.* (2016) 34:4270–6. doi: 10.1200/JCO.2016.67.4283
- Donohoe CL, Doyle SL, Reynolds JV. Visceral adiposity, insulin resistance and cancer risk. *Diabetol Metab Syndr.* (2011) 3:12. doi: 10.1186/1758-5996-3-12
- Kuriyan R. Body composition techniques. *Indian J Med Res.* (2018) 148:648–58. doi: 10.4103/ijmr.IJMR_1777_18
- Liu X, Shi H, Shi Y, Wei H, Yuan X, Jiao Z, et al. Association between a body shape index and prostate cancer: a cross-sectional study of NHANES 2001–2018. *Int Urol Nephrol.* (2024) 56:1869–77. doi: 10.1007/s11255-023-03917-2
- Parra-Soto S, Malcomson FC, Ho FK, Pell JP, Sharp L, Mathers JC, et al. Associations of a body shape index (ABSI) with Cancer incidence, all-cause, and at 23 sites-findings from the UK biobank prospective cohort study. *Cancer Epidemiol Biomarkers Prev.* (2022) 31:315–24. doi: 10.1158/1055-9965.EPI-21-0591
- Nagayama D, Watanabe Y, Yamaguchi T, Maruyama M, Saiki A, Shirai K, et al. New index of abdominal obesity, a body shape index, is BMI-independently associated with systemic arterial stiffness in real-world Japanese population. *Int J Clin Pharmacol Ther.* (2020) 58:709–17. doi: 10.5414/CP203778
- Anoop S, Krakauer J, Krakauer N, Misra A. A body shape index significantly predicts MRI-defined abdominal adipose tissue depots in non-obese Asian Indians with type 2 diabetes mellitus. *BMJ Open Diabetes Res Care.* (2020) 8:e001324. doi: 10.1136/bmjdr-2020-001324
- Kazemian E, Mehran L, Masoumi S, Amouzegar A, Azizi F. Association of trajectory of body shape index with all-cause and cause-specific mortality: 18 years follow-up. *Front Endocrinol (Lausanne).* (2023) 14:1259849. doi: 10.3389/fendo.2023.1259849
- Wang SY, Zhang WS, Jiang CQ, Jin YL, Zhu T, Zhu F, et al. Association of novel and conventional obesity indices with colorectal cancer risk in older Chinese: a 14-year follow-up of the Guangzhou biobank cohort study. *BMC Cancer.* (2023) 23:286. doi: 10.1186/s12885-023-10762-0
- Harding JL, Shaw JE, Anstey KJ, Adams R, Balkau B, Brennan-Olsen SL, et al. Comparison of anthropometric measures as predictors of cancer incidence: a pooled collaborative analysis of 11 Australian cohorts. *Int J Cancer.* (2015) 137:1699–708. doi: 10.1002/ijc.29529
- Ku HC, Cheng E, Cheng CF. A body shape index (ABSI) but not body mass index (BMI) is associated with prostate cancer-specific mortality: evidence from the US NHANES database. *Prostate.* (2024) 84:797–806. doi: 10.1002/pros.24698
- Kurexi A, Peng J, Yao J, Wang L, Wang Q. Association of "a body shape index" with the risk of developing colorectal cancer in U.S. patients with metabolic syndrome: evidence from the NHANES 1999–2018. *BMC Gastroenterol.* (2024) 24:447. doi: 10.1186/s12876-024-03537-9
- Christakoudi S, Tsilidis KK, Evangelou E, Riboli E. Association of body-shape phenotypes with imaging measures of body composition in the UK biobank cohort: relevance to colon cancer risk. *BMC Cancer.* (2021) 21:1106. doi: 10.1186/s12885-021-08820-6
- Rontogianni MO, Bouras E, Aglago EK, Freisling H, Murphy N, Cotterchio M, et al. Allometric versus traditional body-shape indices and risk of colorectal cancer: a Mendelian randomization analysis. *Int J Obes.* (2024) 48:709–16. doi: 10.1038/s41366-024-01479-6
- Marketou ME, Buechler NS, Fragkiadakis K, Plevritaki A, Zervakis S, Maragkoudakis S, et al. Visceral fat and cardiometabolic future in children and adolescents: a critical update. *Pediatr Res.* (2023) 94:1639–47. doi: 10.1038/s41390-023-02709-9
- Ortiz C, López-Cuadrado T, Rodríguez-Blázquez C, Pastor-Barriuso R, Galán I. Clustering of unhealthy lifestyle behaviors, self-rated health and disability. *Prev Med.* (2022) 155:106911. doi: 10.1016/j.ypmed.2021.106911

Glossary

ABSI - A body shape index	BRI - Body roundness index
CRC - Colorectal cancer	TNF-α - Tumor necrosis factor-alpha
NHANES - National Health and Nutrition Examination Survey	IL-6 - Interleukin-6
BMI - Body mass index	GF-I - Insulin-like growth factor-I
WC - Waist circumference	CT - Computed tomography
OR - Odds ratio	MRI - Magnetic resonance imaging
CI - Confidence interval	RCS - Restricted cubic spline
ROC - Receiver operating characteristic	ASAT - Abdominal subcutaneous adipose tissue
PIR - Ratio of family income to poverty	VAT - Visceral adipose tissue
WHtR - Waist-to-height ratio	HI - Hip index
	WHI - Waist-hip index