



OPEN ACCESS

EDITED BY

Annalisa Noce,
University of Rome Tor Vergata, Italy

REVIEWED BY

Elisa Grazioli,
Foro Italico University of Rome, Italy
Manuela Di Lauro,
University of Rome Tor Vergata, Italy

*CORRESPONDENCE

María Pía de la Maza
✉ mpmaza@inta.uchile.cl

†These authors have contributed equally to this work

RECEIVED 07 March 2023

ACCEPTED 21 April 2023

PUBLISHED 09 June 2023

CITATION

Monsalves-Álvarez M, Jiménez T, Bunout D, Barrera G, Hirsch S, Sepúlveda-Guzman C, Silva C, Rodríguez JM, Troncoso R and de la Maza MP (2023) High-intensity interval training prevents muscle mass loss in overweight Chilean young adults during a hypocaloric-Mediterranean diet: a randomized trial. *Front. Nutr.* 10:1181436. doi: 10.3389/fnut.2023.1181436

COPYRIGHT

© 2023 Monsalves-Álvarez, Jiménez, Bunout, Barrera, Hirsch, Sepúlveda-Guzman, Silva, Rodríguez, Troncoso and de la Maza. This is an open-access article distributed under the terms of the [Creative Commons Attribution License \(CC BY\)](https://creativecommons.org/licenses/by/4.0/). The use, distribution or reproduction in other forums is permitted, provided the original author(s) and the copyright owner(s) are credited and that the original publication in this journal is cited, in accordance with accepted academic practice. No use, distribution or reproduction is permitted which does not comply with these terms.

High-intensity interval training prevents muscle mass loss in overweight Chilean young adults during a hypocaloric-Mediterranean diet: a randomized trial

Matías Monsalves-Álvarez^{1†}, Teresa Jiménez^{2†}, Daniel Bunout², Gladys Barrera², Sandra Hirsch², Carlos Sepúlveda-Guzman^{2,3}, Claudio Silva⁴, Juan M. Rodríguez², Rodrigo Troncoso^{2,5} and María Pía de la Maza^{2,4*}

¹Instituto de Ciencias de la Salud, Universidad de O'Higgins, Rancagua, Chile, ²Laboratorio de Investigación en Nutrición y Actividad Física (LABINAF), Instituto de Nutrición y Tecnología de los Alimentos (INTA), Universidad de Chile, Santiago, Chile, ³Laboratorio de Ciencias del Ejercicio, Clínica MEDS, Santiago, Chile, ⁴Clínica Alemana, Santiago, Chile, ⁵Advanced Center for Chronic Diseases, Universidad de Chile, Santiago, Chile

The hypocaloric Mediterranean diet (MD) mainly reduces fat mass but inevitably causes a loss of skeletal muscle mass. High-intensity interval training (HIIT) seems to have advantages in preserving muscle mass during a hypocaloric regime. Our study compares body composition and metabolic changes in overweight and obese Chilean women and men after 3 months of weight loss treatment with a Mediterranean-type hypocaloric diet, HIIT, or a combination of both. The study included 83 overweight or obese women and men between the ages of 25 and 50. The subjects were randomly assigned to one of the three intervention groups: (1) MD, (2) EX, and (3) MD+EX. Baseline and post-intervention measurements included: (a) body composition by dual-beam densitometry, muscle, and fat measurements by thigh ultrasound and computed tomography; (b) handgrip and quadriceps muscle strength; (c) exercise performance by peak oxygen consumption, peak load, work efficiency, and exercise energy expenditure; and (d) metabolic parameters. Out of 83 participants, the retention rate was 49% due to low compliance with the interventions. As expected, the MD group resulted in significantly greater weight loss (MD -7%, EX -0.6% and MD+EX -5.3%) and appendicular fat mass loss (MD -11.1%, EX -2.9, MD+EX -10.2%) but was associated with significant lean tissue loss (2.8%), which was prevented by HIIT (EX -0.1 and MD+EX -0.6%). Metabolic and glycoxidative parameters remained unchanged, irrespective of changes in body composition. Hypocaloric diets remain the most effective means to lose weight and body fat. However, it induces a loss of lean body mass when not accompanied by exercise training. This study shows that HIIT prevents the loss of muscle mass caused by a hypocaloric Mediterranean diet.

KEYWORDS

HIIT, body composition, Mediterranean diet, skeletal muscle, exercise

Introduction

Healthy dietary patterns and exercise training have been proposed as primary components in the prevention and treatment of obesity and its comorbidities (1). Weight loss has been found to depend on different factors, such as the degree of energy deficit imposed by the diet, its duration, and macronutrient composition, which may directly influence adherence and treatment success (2–5). Among the diets, the Mediterranean Diet (MD), originally described by Ancel Keys, has been shown to promote a healthy metabolic profile mainly through its nutrient characteristics based on plants, unsaturated fats, fruits, and fiber while focusing on a low energy density, making it palatable and satiating (6). Interestingly, MD with limited amounts of carbohydrates has promoted differential mobilization of visceral fat depots and reduced cardiovascular risk factors in insulin-resistant patients. As with other diets, the weight loss seen with MD or low-calorie diets is mainly fat mass, but the weight loss inevitably affects skeletal muscle mass. It can range from ~2 to 10%, depending on the age of the subjects (7, 8). This loss of lean muscle mass is likely to potentiate adverse effects on physical function and health (9).

Physical activity has a limited contribution to body fat reduction, even among different types of exercise (10–13). However, it is highly relevant for the preservation of muscle mass (7), weight maintenance (14), and improving cardiorespiratory fitness (15). Combining physical exercise with a hypocaloric diet induces slightly more weight loss in the short term (1.0–11.5 kg) (16). However, caloric restriction plus continuous aerobic training causes greater muscle mass loss than resistance exercise (17), suggesting that exercise modalities may play a role in maintaining muscle mass while dieting.

Although the benefits of even modest weight loss have been reported (18), it is unclear which intervention (diet vs. diet plus exercise or exercise alone) induces more favorable changes in body composition and chronic disease management in the long term. Weight maintenance is challenging due to adherence to behavioral changes and metabolic adaptations after weight loss. Therefore, researchers are looking for more effective and less time-consuming strategies that will hopefully increase commitment to healthy lifestyle changes.

High-intensity interval training (HIIT) has emerged as an alternative training modality that improves cardiorespiratory fitness and cardio-metabolic parameters in the healthy population (19) and in dieting obese patients (20, 21). However, few studies have addressed changes in segmental muscle mass and function and fat mass of different compartments after HIIT training (22–24), leading to potential differences when exercise training modalities are prescribed for the treatment of metabolic diseases.

The aim of the present study was to compare body composition and metabolic changes in overweight and obese men and women after 3 months of behavioral management for weight loss using a Mediterranean-type hypocaloric diet, HIIT, or a combination of both. We employed DEXA, abdominal CT scans, leg CT, and ultrasound (US) to analyze body compartments. Metabolic variables included serum glucose, lipoproteins, and insulin. We measured peak exercise oxygen consumption, workload, and handgrip and quadriceps muscle strength to evaluate functional changes. We hypothesized that adding HIIT

to the dietary intervention would enhance its effects on body composition and metabolic profile. Our primary endpoints were the reduction of body fat and the maintenance of muscle mass. Secondary outcomes were the changes in the metabolic variables studied. This study was registered in Clinical Trials (NCT01793896); this manuscript refers to body composition and metabolic endpoints.

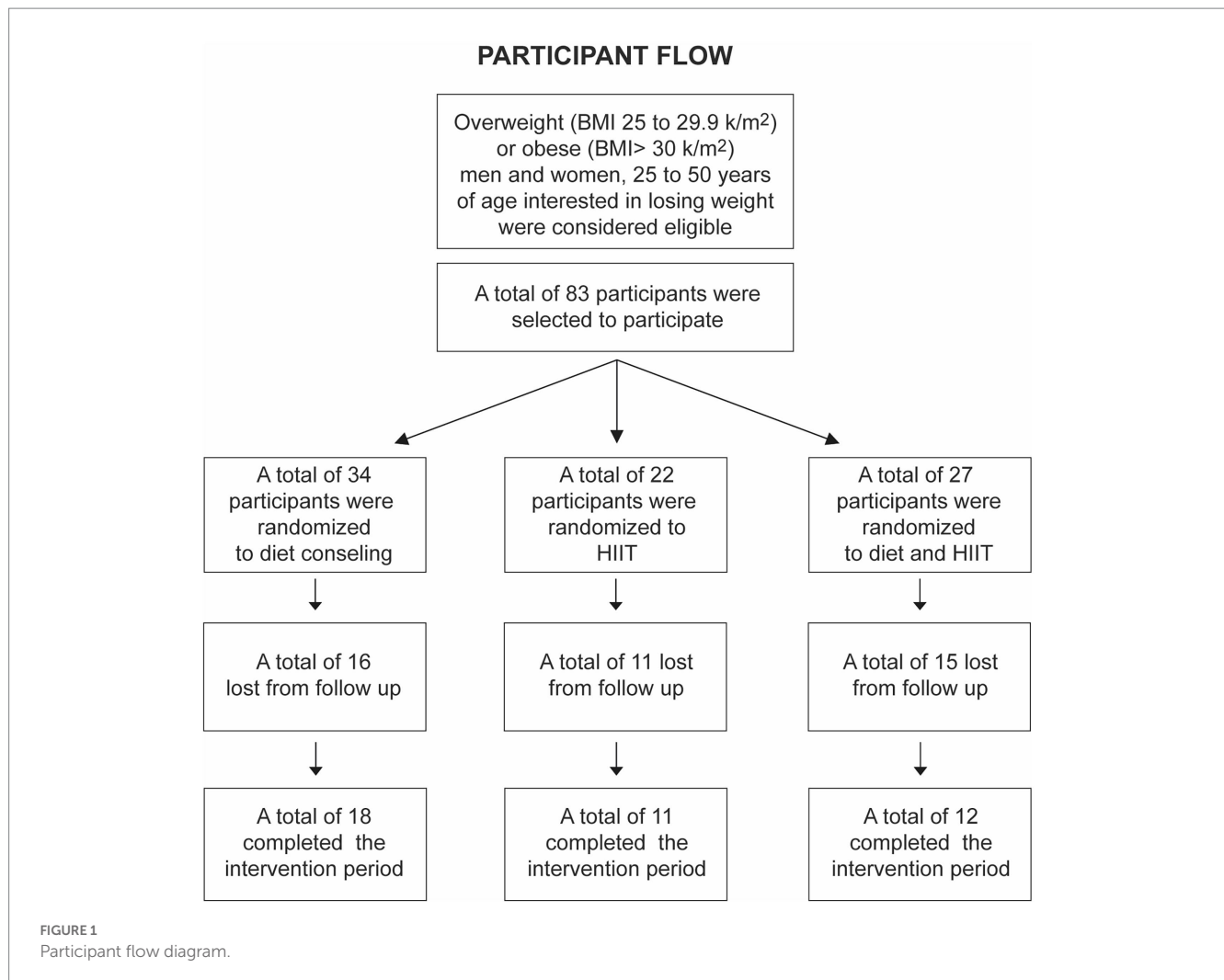
Methods

Subjects

The present study was a 3-month intervention trial. Inclusion criteria considered overweight (BMI 25 to 29.9 kg/m²) or obese (BMI greater than or equal to 30 kg/m²) men and women between the ages of 25 and 50 years who were interested in losing weight. At the same time, exclusion criteria included weight fluctuations (> 3 kg in the last 3 months), diabetes mellitus, neuromuscular or joint diseases, active smoking (>5 cigarettes/day), alcohol intake >30 g/day, and chronic diseases such as cancer, AIDS, or any organ failure. After signing a written informed consent, volunteers underwent an initial evaluation to rule out possible exclusion criteria and were then randomly assigned (according to a randomized number-based algorithm) to 1 of 3 interventions: a low-calorie Mediterranean-type diet (MD), supervised high-intensity interval training (HIIT) 3 times per week (EX), both interventions simultaneously (MD + EX). The study did not include a control group, but we performed a 3-month control period before randomization in 25 volunteers in which no intervention was prescribed.

Study design

After the initial assessment, subjects were randomly assigned to receive one of the interventions for 3 months, repeating the same evaluation at the end of this period. A total of 83 participants were included and randomized into three different groups (Figure 1). **MD:** the subjects were prescribed a Mediterranean diet with a caloric intake of 20 Kcal/kg. The recommended foods in the MD, as previously described (25), were non-fat fermented milk, vegetables, legumes, fresh fruit, olive oil, and fish. Subjects were also instructed to avoid highly processed foods (such as breakfast cereals, cookies, cakes, powdered milk, and sausages). Wine consumption, which is typical of MD, was not recommended. Subjects were instructed to maintain physical activity or regular exercise without a supervised exercise plan and were checked weekly by the dietitian in charge. **EX:** High-Intensity Interval Training (HIIT) sessions were performed in three weekly sessions on a static bicycle (Spirit, model CU800, AR, United States), following the protocol of Gillen et al. (26). Subjects performed 10 repetitions of 1 min in each session, at 75% of the peak power achieved in the incremental test, with 1 min of rest cycling at 50 watts. This protocol was designed to achieve 85–90% of the maximum cardiac rate (HR_{max}) and included a 3-min warm-up and a 2-min recovery period, for a total of 25 min per session. **MED + EX:** subjects were enrolled in both interventions simultaneously.



Dietary intake and Mediterranean score

Habitual dietary intake according to the survey of Uribarri et al. (27) and also the calculation of the Mediterranean Score using the “Aliméntate Sano Dietary Recall,” (28) available on the Internet (https://www.mifitbook.cl/que_es_fitbook.php).

Blood samples

Fasting blood samples were collected by a venous puncture to obtain routine clinical biochemical tests (glucose, insulin, hemoglobin, lipoproteins, creatinine, prothrombin, and thyroid thyrotropin), analyzed in Vidaintegra laboratories.

Body composition

Subjects were assessed for basic anthropometric measurements (height, weight, and waist circumference). Double-photon densitometry (DEXA) was evaluated for estimation of total body composition on Lunar Encore equipment (software 2011, version 13.60), with a minimal significant variability (MSV) at the 95%

confidence level between two measurements of the same object or subject of 0.9% (29).

Visceral and subcutaneous fat determination by computed tomography

Computed tomography (CT) at the L3 level to measure visceral and subcutaneous fat areas was performed in addition to the measurement of liver density as an indicator of fat infiltration, and CT at the same site of ultrasound measurements to estimate the rectus femoris muscle (RFM) area and density, in a Siemens Definition AS + tomograph with 128 detectors. The images were exported and segmented semi-automatically with the SliceOMatic software (version 5.0, Tomovision, Canada) by the region growth method and manual correction when necessary.

Muscle mass cross-sectional area

Thigh ultrasound (US) was used to measure the cross-sectional area of the rectus femoris muscle (RFM), at the mid-level between the iliac crest and the patella using a General Electric Logiq

ultrasonographer, with intra- and interrater errors of 3.2 and 7.4%, respectively (30).

Physical performance

Quadriceps muscle strength was measured using a quadriceps table attached to a transducer, and handgrip strength was measured using a Therapeutic Instruments dynamometer (Clifton, NJ, USA), registering the best of three measurements on each limb (31). Cardiorespiratory fitness was determined by submaximal oxygen consumption (VO_2) after an incremental test on a braked cycle ergometer using Sensormedics Vmax Encore 29 equipment. The incremental exercise test was started on a 15-watt ramp with 15-watt increments until volitional exhaustion at 60 rpm to measure $\text{VO}_{2\text{peak}}$ (32). Gross work efficiency was calculated as the ratio of work rate to energy expenditure in joules multiplied by 100 at submaximal work rates (33).

Energy expenditure

Actigraph (Actiheart®) was installed on all participants for 72 h for actigraphy and heart rate measurement. The devices were individually calibrated with the heart rate/energy expenditure curve obtained during the exercise calorimetry. Total energy expenditure (TEE), activity energy expenditure (AEE), and physical activity level (PAL) were determined (Actiheart software version 4.0.32, www.camtech.com).

Statistical analysis

Baseline data distribution was analyzed using the Shapiro–Wilk test, with group comparisons performed using the Student's *T*-test, one-way ANOVA, or Kruskal–Wallis, depending on their distribution. To analyze the effects of the interventions, we transformed the delta changes before and after the intervention into percentages and compared the means using a one-way ANOVA. We also assessed the changes in variables within and between treatment groups. To do this, we performed a multilevel mixed-effects linear regression for repeated measures on raw data. This method has been previously described to detect the time or treatment effect and the interaction between these two conditions (34). All analyses were performed using Stata 13.0 software. Table variables were expressed as mean \pm SD, and median (range). Regarding power size calculation, according to our primary endpoint (loss of body fat) and based on a previous study (35), to obtain a 10% reduction in total fat after the intervention, eight participants per group were required to obtain results with an α of less than 0.05 and a power of 0.8 using a paired analysis.

Results

As mentioned above, a total of 83 patients were initially selected according to the inclusion criteria, but 42 subjects failed to attend the exercise sessions or appointments with the RD, so we could not complete the final evaluation (body composition measurements and

blood samples); therefore, the final sample for statistical analysis amounted to 41 (Figure 1). Table 1 shows all the variables studied by the group before the intervention. The groups were homogeneous in every variable at baseline, observing only the expected differences due to gender.

Brief and intense exercise attenuates appendicular lean body mass loss induced by low-calorie MD

Exercise has been shown to prevent the loss of muscle mass induced by caloric restriction (9). In Table 2, we show that after 3 months of intervention, there was a significant reduction (expressed as %) in body weight, BMI, and waist circumference in MD and MD + EX when compared to EX alone ($p < 0.0001$). Regarding body composition, appendicular LMB, trunk, and total FM were also significantly different in the MD group compared to the other two groups ($p = 0.007, 0.03, \text{ and } 0.03$, respectively). Regarding biochemical parameters, no statistical differences were observed, despite a decrease in glucose and insulin in the EX and MD + EX groups (-1.5 and -3.1% reduction, respectively). Interestingly, visceral and subcutaneous fat determined by CT showed that MD alone resulted in a significant reduction in abdominal visceral and subcutaneous fat area ($p = 0.02$ and 0.04), although MD + EX had a -15.4% and -15.8% reduction on the same CT measured areas, respectively. We found no difference in exercise testing between groups, but $\text{VO}_{2\text{peak}}$ and workload showed percentage improvements in EX and MD + EX groups.

Muscle performance is improved during hypocaloric-MD diets with high-intensity intervals

Preserving skeletal muscle performance is essential to maintaining function at any age (36). Table 3 shows the variables that exhibited significant changes after the intervention according to the mixed-effects linear regression for repeated measures method. Here, we found a lack of weight and total fat loss in the EX group (79.7 to 77 kg and 29.4 to 29.3 kg, respectively), while maintaining lean body mass in MD + EX (~ 45.6 kg), and an increase in $\text{VO}_{2\text{peak}}$ and maximal load (*W*) associated with the inclusion of a HIIT modality in MD + EX (7.4 ml·kg⁻¹·min and 54 W, respectively). Results did not change significantly when both exercise groups were combined with the calorie-restricted group. In conclusion, caloric restriction-induced greater fat and muscle loss. However, the incorporation of short-interval HIIT prevented muscle mass loss while increasing muscle strength and aerobic capacity as determined by $\text{VO}_{2\text{peak}}$.

Discussion

In this study, we used a hypocaloric MD, HIIT 3 times per week, and diet plus training to induce changes in body composition and metabolic parameters. We analyzed the results by protocol, including the 41 compliant men and women. Baseline

TABLE 1 Comparison of baseline variables between study groups.

Variable	MD (n=18)	EX (n=11)	MD+ EX (n=12)	p
Sex (M/W)	9/9	4/7	4/8	
Age (years)	38 (25–50)	39 (26–49)	31.5 (23–48)	0.7088
Body composition and dietary recalls				
Weight (Kg)	79.9 (68.7–104.1)	79.9 (68.3–93.9)	77.9 (70.4–102.3)	0.9303
Body mass index (kg/m ²)	29.9 ± 1.7	29.5 ± 1.5	29.6 ± 1.6	0.7698
Waist circumference (cm)	98.6 ± 7.6	94.2 ± 6.9	96.2 ± 7.5	0.3088
Total lean body mass (kg)	42.0 (35.6–62.9)	40.6 (38.3–62.8)	45.6 (37.3–69.5)	0.9081
Appendicular lean body mass (kg)	18.8 (14.8–30.0)	18.7 (15.1–29.0)	21.0 (16.6–34.2)	0.8196
Total fat mass (kg)	32.6 ± 3.9	31.3 ± 4.6	31.1 ± 3.3	0.5269
Trunk fat mass (kg)	18.7 ± 2.8	17.7 ± 2.4	17.5 ± 2.6	0.4380
Appendicular fat mass (kg)	13.0 ± 2.4	12.3 ± 3.3	12.2 ± 2.1	0.6624
Mediterranean score *	5.3 ± 2.1	5.4 ± 1.7	4.7 ± 1.4	0.5937
Biochemistry				
Glucose (mg/dL)	90.0 ± 10.1	90.9 ± 7.6	88.3 ± 9.1	0.7977
Insulin (U/mL)	11.8 (4.8–36.1)	10.2 (6.6–28.8)	10.5 (4.5–34.2)	0.9453
HOMA-IR	2.7 (1.1–9.3)	2.2 (1.4–8.7)	2.2 (1.2–3.9)	0.3011
Total cholesterol (mg/dL)	189 (126–362)	194 (111–223)	202 (149–223)	0.5691
HDL cholesterol (mg/dL)	47 (26–77)	43 (35–63)	52 (32–91)	0.6348
LDL cholesterol (mg/dL)	107.7 ± 29.4	105.9 ± 24.2	101.0 ± 43.2	0.8601
Tryglycerides (mg/dL)	148 (45–1,372)	134 (34–353)	139 (62–385)	0.8722
Muscle strength, ultrasound, and CT scans				
Right-hand strength (kg)	29 (17–52.5)	25 (16–49.5)	32.8 (18–48)	0.5208
Left-hand strength (kg)	25.5 (15–49.5)	25 (15–50.5)	29.5 (15–47.5)	0.4176
Right quadriceps strength (N)	350.9 ± 86.8	370.0 ± 80.3	415.7 ± 128.8	0.2248
Left quadriceps strength (N)	373.6 ± 79.3	377.3 ± 95.5	424.1 ± 123.7	0.3540
US–right RFM area (cm ²)	21.2 ± 3.4	23.7 ± 2.6	24.2 ± 5.7	0.1066
US–left RFM area (cm ²)	21.2 ± 3.5	22.6 ± 2.8	24.0 ± 5.4	0.1540
CT–left RFM area (cm ²)	25.9 ± 3.4	27.1 ± 3.4	26.8 ± 5.0	0.7053
CT–left RFM.Density (HU)	50.0 ± 3.2	52.4 ± 3.0	50.8 ± 2.2	0.1414
CT–hepatic density (HU)	54.4 (9.5–66.6)	61.3 (30.1–71.5)	54.1 (17.5–62.2)	0.0624
CT–total Abdominal Fat area (cm ²)	492.5 ± 79.0	454.7 ± 58.2	433.0 ± 65.2	0.0849
CT–abdominal visceral fat area (cm ²)	118.8 (51.1–310.4)	134.4 (59.6–234.6)	106.5 (73.8–237.1)	0.9270
CT–abdominal subcutaneous fat area (cm ²)	348.3 ± 66.9	309.6 ± 86.3	296.5 ± 43.9	0.1137
Exercise tests				
VO ₂ peak (ml/Kg/min)	17.3 (10.8–32.1)	17.2 (11.3–34.3)	20.3 (14.6–31.2)	0.2839
Maximal load (W)	143.2 ± 56.5	155.3 ± 45.4	169.0 ± 55.7	0.4467
Exercise time (Min)	7.7 (4.4–14.6)	7.9 (4.5–19.7)	7.0 (5.2–13.9)	0.7361
Gross work efficiency (W/J)	7.7 ± 1.5	8.0 ± 1.4	7.8 ± 1.0	0.9093
Activity energy expenditure (KCal)	706 (176–2,931)	521 (194–2,171)	776 (196–1,773)	0.7726
Physical activity level (METs)	1.5 (1.2–2.8)	1.4 (1.3–2.4)	1.6 (1.3–2.1)	0.8941

DEXA, dual-energy x-ray absorptiometry/RFM, rectus femoris muscle/CT, computed tomography/US, ultrasound / W, watts/J, joules. Values are mean ± SD or median (range) according to the distribution of the variables. Analysis performed by Kruskal–Wallis 2 or one-way ANOVA, depending on the distribution of variables. Significant when $p \leq 0.05$. *Mediterranean score according to the “Alimentate Sano” dietary survey, where scores 0–4 = low, 4–9 = moderate, and 9–14 = high (14 points being optimal). **Dietary AGEs according to a semi-quantitative dietary recall, where < 10 kU/d = low AGE intake, > 10 < 16 kU/d = moderate AGE intake and > 16 kU/d = elevated AGE intake.

TABLE 2 Changes in study variables after 3-months of intervention.

	MD (n=18)	EX (n=11)	MD+EX (n=12)	p
Body composition and dietary recalls				
Weight (%)	-7.2 ± 3.6 α	-0.6 ± 3.2	-5.3 ± 2.7 α	< 0.0001
Body mass index (%)	-7.5 ± 3.6 α	-0.4 ± 3.4	-6.1 ± 2.9 α	< 0.0001
Waist circumference (%)	-7.8 ± 4.5 α	-1.9 ± 3.3	-7.4 ± 3.6 α	0.0009
DEXA-total lean body mass (%)	-2.8 ± 2.8 α	-0.1 ± 2.3	-0.6 ± 2.1	0.0153
DEXA-appendicular lean body mass (%)	-3.4 ± 4.4 α	5.8 ± 12.5	-1.6 ± 2.7	0.0070
DEXA-total fat mass (%)	-11.7 ± 13.3	-3.8 ± 4.7	-13.5 ± 8.0	0.0770
DEXA-trunk fat mass (%)	-14.6 ± 13.8	-4.0 ± 4.9	-15.2 ± 8.9	0.0317
DEXA-appendicular fat mass (%)	-11.1 ± 10.3 α	-2.9 ± 5.3	-10.2 ± 7.3	0.0375
Mediterranean score	71.5 ± 84.3	32.4 ± 64.6	69.6 ± 60.4	0.3397
Biochemistry				
Glucose (%)	1.4 ± 8.1	-1.5 ± 7.0	-3.1 ± 4.8	0.2224
Insulin (%)	16.7 ± 76.8	-2.8 ± 34.9	-12.8 ± 33.9	0.3691
Homa-IR (%)	21.7 ± 108.5	30.6 ± 140	5.3 ± 64.5	0.8474
Total cholesterol (%)	-0.6 ± 18.8	-1.1 ± 19.3	-6.1 ± 8.5	0.6472
HDL cholesterol (%)	2.5 ± 16.4	3.4 ± 15.6	0.4 ± 10.6	0.8830
LDL cholesterol (%)	15.8 ± 54	2.2 ± 53.0	12.6 ± 43.2	0.7816
Tryglycerides (%)	2.2 ± 67.1	-4.3 ± 36.2	-1.6 ± 34.4	0.9456
Muscle strength, ultrasound, and CT scans				
Right-hand strength (%)	1.6 ± 19.8	1.9 ± 6.6	6.3 ± 11.5	0.6789
Left-hand strength (%)	6.9 ± 17.1	7.0 ± 22.9	3.2 ± 22.8	0.8689
Right quadriceps strength (%)	5.0 ± 16.2	7.4 ± 21.2	3.8 ± 27.3	0.9224
Left quadriceps strength (%)	-0.8 ± 11.4	6.1 ± 17.1	1.0 ± 16.5	0.4871
US-right RFM area (%)	5.2 ± 14.0	10.6 ± 12.0	6.9 ± 9.4	0.5239
US-left RFM area (%)	3.1 ± 13.7	7.9 ± 9.6	7.9 ± 10.5	0.4503
CT-left RFM area (%)	-0.1 ± 12.5	4.6 ± 9.9	5.5 ± 14.4	0.4338
CT-left RFM.DENSITY (%)	2.2 ± 5.2	-1.1 ± 6.2	1.2 ± 7.6	0.4428
CT-Hepatic density (%)	25.0 ± 45.9	1.8 ± 15.6	17.4 ± 44.4	0.3508
CT-total abdominal fat area (%)	-18.1 ± 13.7 α	-4.1 ± 6.7	-15.4 ± 13.6	0.0215
CT-abdominal visceral fat area (%)	-15.5 ± 25.0	1.7 ± 15.7	-12.5 ± 28.2	0.1969
CT-abdominal subcutaneous fat area (%)	-18.0 ± 13.0 α	-6.9 ± 6.2	-15.8 ± 10.6	0.0432
Exercise tests				
VO2 peak (%)	8.2 ± 28.4	20.0 ± 32.3	24.6 ± 29.9	0.3110
Maximal load (%)	9.9 ± 37.0	14.9 ± 24.4	22.3 ± 26.8	0.5939
Exercise time (%)	8.6 ± 43.8	13.6 ± 41.4	9.3 ± 26.5	0.9435
Gross work efficiency (%)	1.5 ± 21.9	-5.6 ± 30.4	6.7 ± 27.8	0.5328
Activity energy expenditure (%)	11.9 ± 35.6	-4.3 ± 52.5	20.9 ± 45.4	0.5466
Physical activity level (%)	3.5 ± 7.6	0.9 ± 22.2	4.1 ± 14.8	0.8744

DEXA, dual-energy X-ray absorptiometry / RFM, rectus femoris muscle/CT, computed tomography/US, ultrasound/W, watts/J, joules. Values represent % change from baseline (means ± SD), analyzed by one-way ANOVA. Significant when p < 0.05--for post-hoc analysis, α = significantly different from EX Group.

variables did not differ between compliant and 42 excluded subjects (data not shown). As in previous studies, we observed that three short weekly sessions of HIIT attenuated calorie restriction-induced fat and lean body mass loss. Exercise is often included in lifestyle intervention programs to promote metabolic

flexibility and prevent and treat metabolic diseases (37). Muscle loss associated with even a small and short-term caloric restriction must be emphasized because intermittent dieting is frequent in sedentary obese patients, increasing the risk of future sarcopenia and weight regain (38). These findings are relevant because

TABLE 3 Intergroup differences before and after the interventions.

	MD (n=18)		EX (n=11)		MD+EX (n=12)		Post-hoc
	Initial	Final	Initial	Final	Initial	Final	
Weight (Kg)	79.9 (74.6–85.3)	72.6 (67.5–77.8)	79.9 (71.8–87.7)	77 (73.7–86.2)	77.9 (72–93.6)	73.7 (67.8–86.4)	α
DEXA–total lean body mass (Kg)	42 (38.1–52.3)	40.6 (37.2–50.7)	40.6 (39.7–57.2)	42.8 (39.1–56.9)	45.6 (38.6–57.2)	45.6 (38.8–56)	#
DEXA–total fat mass (Kg)	32.7 (30.6–35.7)	29.5 (26.9–31.4)	29.4 (28.2–33.2)	29.3 (26.7–30.8)	31.6 (29.4–33)	27.2 (25.5–28.6)	α
DEXA–trunk fat mass (Kg)	18.1 (16.2–20.2)	16.5 (14.5–17.4)	18.2 (14.9–18.9)	16.5 (15.3–17.6)	17.4 (15.9–18.9)	14.9 (13.2–15.8)	α
DEXA–appendicular lean body mass (Kg)	18.8 (16.7–25)	17.9 (16.7–23.6)	18.7 (18–22.8)	20.1 (18–26.5)	21 (17.2–26.4)	20.5 (17.3–25.9)	α
DEXA–appendicular fat mass (Kg)	12.9 (11.3–14.7)	12.3 (9.4–13.5)	12.5 (8.8–14.6)	10.9 (9–13.7)	12.7 (10.1–13.9)	11.2 (9.3–12.3)	α
CT–total Abdominal fat area (cm ²)	456.6 (442.6–550.5)	421.3 (339.4–452.8)	440.7 (408.1–509.5)	402.1 (381.2–459.8)	415.9 (381.9–483.3)	373 (324.1–419.4)	α
CT–abdominal subcutaneous fat area (cm ²)	333.5 (308.3–414.6)	293 (239.8–351.7)	298.2 (239.5–382.7)	269.3 (214–329)	303.3 (256.6–327.3)	256.9 (199.9–292.8)	α
VO ₂ peak (mL/Kg/min)	17.3 (13–21.5)	16.9 (15.1–20.2)	17.2 (13.8–25.6)	24.8 (18.8–27)	20.3 (17.2–25.5)	27.7 (20.3–31.7)	&
Maximal load (W)	135 (100–181)	130 (110–184)	156 (118–195)	156 (132–183)	160 (120.5–207)	217 (166–243.5)	&

DEXA, dual-energy X-ray absorptiometry / RFM, rectus femoris muscle / CT, computed tomography/ US, ultrasound / W, watts / J, joules. Values represent the median (p25–p75) at baseline and after the interventions, analyzed by mixed-effects linear regression for repeated measures method. Significant when $p < 0.05$ –For *post-hoc* analysis, α = EX group significantly different, # = MD group significantly different, and & = MD + EX group significantly different.

we have previously detected lower muscle mass and strength in our population, even in young adults (39).

One of the main issues regarding the effectiveness of exercise and dietary treatments in patients with chronic conditions is adherence, which in our experience is around 50% (35, 40, 41). We assessed compliance with exercise by registering attendance at scheduled training sessions. As patients usually justify their lack of time, HIIT seemed to be a more time-efficient and less time-consuming strategy. However, in this new study, we observed similar retention rates, which puts pressure on the development of new strategies to achieve adherence in studies that involve efforts such as dietary changes and exercise.

Recently, the randomized PERIMED-plus trial showed that in men and women with metabolic syndrome who followed a Mediterranean diet for 12 months, 40% of the participants reported reductions in weight, waist circumference, blood pressure, and cholesterol with a low dropout rate (42), showing the effectiveness of this dietary pattern in the long term. When analyzing body composition changes by DEXA, it is evident that the hypocaloric diet (MD) induced a significantly greater loss of fat mass and a decrease in lean body mass (especially appendicular). These results were not confirmed by US or CT measurements of femoral muscle mass, suggesting that these measurements were less sensitive because they were localized to only one muscle area compared to the four extremities in DEXA. As expected, the training method employed was well tolerated. However, it did not induce changes in handgrip or quadriceps strength, as can be observed with strength training

modalities mediated by mechanical loading and increased muscle protein synthesis pathways (43, 44). Exercise alone did not induce any changes in body composition or muscle parameters, unlike those reported by Blue et al. who demonstrated that 3 weeks of HIIT increased leg vastus lateralis cross-sectional area (CSA) by 14% in obese and overweight participants, but without any caloric restriction (45). However, exercise is essential for preserving muscle mass during hypocaloric diets.

Our results confirm that HIIT can preserve lean mass during a negative energy balance. Interestingly, it has been shown that the mitochondrial and myofibrillar protein synthesis responses are increased after high intensity (above 60% $watt_{max}$) when compared to low-intensity bouts of aerobic training (30% $watt_{max}$) in young men (46). This may explain why our subjects (trained at 75% $watt_{max}$) maintained their lean mass despite a diet-induced energy deficit. It is worth mentioning that the protein intake in our protocol was set at 1 g/kg body weight, which seems to be sufficient, at least for these young obese patients, to preserve muscle in this type of exercise regime with a hypocaloric MD (47).

We observed a barely significant but clinically relevant change in VO_{2peak} that could be explained by factors such as an inadequate training dose (frequency, intensity, volume), insufficient to promote changes in fitness, and interindividual variability. Some investigations have demonstrated significant interindividual variability without improvements in cardiorespiratory fitness in response to typical exercise doses, attributed partly to genetic variants and exercise prescriptions (48, 49). A growing body of evidence indicates that changes following a regular training

program vary among individuals, particularly depending on initial fitness levels, which in the present study were low. Hence, not all subjects will respond in the same way to a given dose of physical training. These subjects are known as non-responders. It is likely that our prescribed amount of HIIT (a fixed workload of 75% $watt_{max}$) was insufficient to induce changes in cardiovascular fitness in most of our volunteers. It may have been more convenient to prescribe training based on respiratory thresholds, as suggested by several authors (40, 41). Thus, non-responders to training should be considered more trained according to inadequate physiological parameters (40, 41, 50) and not as refractory to exercise programs.

Surprisingly, despite a more than 5% change in body weight, a nearly 12% decrease in fat mass, and a significant reduction in abdominal fat after hypocaloric dieting, no differences were observed in metabolic and oxidative stress indicators, contradicting clinical and scientific results. It is possible that adherence to the Mediterranean dietary pattern allowed a loss in total body fat and liver fat. However, no correlation was observed between an increase in the Mediterranean Score and changes in metabolic parameters such as glucose, insulin, HOMA-IR, and lipoprotein levels. Subjects who started the intervention with two or more features of the metabolic syndrome (waist circumference, elevated triglycerides, low HDL cholesterol, or elevated HOMA-IR) behaved similarly. We do not explain these results except for the high variability of laboratory parameters (especially HOMA-IR), which could have been amplified by the small sample size. A recent meta-analysis showed that only aerobic exercise reduced insulin levels and HOMA-IR (51). Another multicenter study using HIIT showed significant changes in these parameters in prediabetic men and women (52), although employing a lower-volume, higher-intensity protocol (5-by-1 min HIT, at ~125% VO_{2max} cycling intensity). In a small sample of healthy subjects, long-term endurance training reduced triglyceride, glucose, and creatinine levels and increased superoxide dismutase activity (53). Lipoprotein profiles have improved through high-intensity aerobic and moderate resistance training (54, 55). Some studies have demonstrated that HIIT induces favorable metabolic changes in overweight and obese adults, while others have shown no apparent changes (56). These differences may be attributed to patient selection and specific training modalities, among other variables.

This study has limitations: a small sample size, due to low adherence to the three interventions, despite every effort to increase it, and a short intervention period. The reduced sample also precluded the analysis of men separately from women, who may have responded differently to diet and training. Our results may not apply to other age groups or groups with a wider gender distribution. With respect to dietary prescriptions, we could not ascertain these subjects' actual protein intake because dietary recall proved limited. However, this study also has significant strengths, such as the various methods used to ensure proper body composition assessment and the measurement of several metabolic and functional parameters to detect changes induced by the interventions. Also, the exclusion of non-compliant volunteers allows for the determination of whether positive changes or a lack of effects occurred and were not a consequence of statistical error.

In conclusion, this study confirms that the best way to reduce body fat is to reduce energy intake. However, this can induce rapid

muscle mass loss, which can be avoided by short sessions of HIIT. According to our results, fat mass loss seems to have a less relevant role in metabolic parameters than expected.

Data availability statement

The raw data supporting the conclusions of this article will be made available by the authors, without undue reservation.

Ethics statement

The studies involving human participants were reviewed and approved by Ethics Committee of the Institute of Nutrition and Food Technology (INTA), Universidad de Chile. The patients/participants provided their written informed consent to participate in this study.

Author contributions

MM, MM-Á, TJ, and DB conceived and designed the study. MM-Á, TJ, JR, GB, CS-G, CS, and DB performed the experiments. MM-Á, DB, MM, SH, and RT analyzed the data. MM-Á, DB, RT, and MM interpreted the data. MM-Á, TJ, DB, RT, and MM drafted the manuscript, which was reviewed by all authors. All authors contributed to the article and approved the submitted version.

Funding

This work was supported by the Chilean Agencia Nacional de Investigación y Desarrollo (ANID): MM #1130284 and MM-A #11230186.

Acknowledgments

To Nancy Cruz, for collaborating in the recruitment of volunteers and part of the procedures carried out in the study.

Conflict of interest

The authors declare that the research was conducted without any commercial or financial relationships construed as a potential conflict of interest.

Publisher's note

All claims expressed in this article are solely those of the authors and do not necessarily represent those of their affiliated organizations, or those of the publisher, the editors and the reviewers. Any product that may be evaluated in this article, or claim that may be made by its manufacturer, is not guaranteed or endorsed by the publisher.

References

- Mikkelsen B, Williams J, Rakovac I, Wickramasinghe K, Hennis A, Shin H-R, et al. Life course approach to prevention and control of non-communicable diseases. *BMJ*. (2019) 364:l257. doi: 10.1136/bmj.l257
- Finkler E, Heymsfield SB, St-Onge M-P. Rate of weight loss can be predicted by patient characteristics and intervention strategies. *J Acad Nutr Diet*. (2012) 112:75–80. doi: 10.1016/j.jada.2011.08.034
- Del Corral P, Bryan DR, Garvey WT, Gower BA, Hunter GR. Dietary adherence during weight loss predicts weight regain. *Obesity (Silver Spring)*. (2011) 19:1177–81. doi: 10.1038/oby.2010.298
- Greenberg I, Stampfer MJ, Schwarzfuchs D, Shai IDIRECT Group. Adherence and success in long-term weight loss diets: the dietary intervention randomized controlled trial (DIRECT). *J Am Coll Nutr*. (2009) 28:159–8. doi: 10.1080/07315724.2009.10719767
- Hall KD, Chen KY, Guo J, Lam YY, Leibell RL, Mayer LE, et al. Energy expenditure and body composition changes after an isocaloric ketogenic diet in overweight and obese men. *Am J Clin Nutr*. (2016) 104:324–3. doi: 10.3945/ajcn.116.133561
- Keys A. Mediterranean diet and public health: personal reflections. *Am J Clin Nutr*. (1995) 61:1321S–3S. doi: 10.1093/ajcn/61.6.1321S
- Cava E, Yeat NC, Mittendorfer B. Preserving healthy muscle during weight loss. *Adv Nutr*. (2017) 8:511–9. doi: 10.3945/an.116.014506
- Elia M, Stubbs RJ, Henry CJK. Differences in fat, carbohydrate, and protein metabolism between lean and obese subjects undergoing Total starvation. *Obes Res*. (1999) 7:597–4. doi: 10.1002/j.1550-8528.1999.tb00720.x
- McCarthy D, Berg A. Weight loss strategies and the risk of skeletal muscle mass loss. *Nutrients*. (2021) 13:2473. doi: 10.3390/nu13072473
- Willis LH, Slentz CA, Bateman LA, Shields AT, Piner LW, Bales CW, et al. Effects of aerobic and/or resistance training on body mass and fat mass in overweight or obese adults. *J Appl Physiol* (1985). (2012) 113:1831–7. doi: 10.1152/jappphysiol.01370.2011
- Miller W, Kocaja D, Hamilton E. A meta-analysis of the past 25 years of weight loss research using diet, exercise or diet plus exercise intervention. *Int J Obes*. (1997) 21:941–7. doi: 10.1038/sj.ijo.0800499
- Pontzer H, Durazo-Arvizu R, Dugas LR, Plange-Rhule J, Bovet P, Forrester TE, et al. Constrained Total energy expenditure and metabolic adaptation to physical activity in adult humans. *Curr Biol*. (2016) 26:410–7. doi: 10.1016/j.cub.2015.12.046
- Swift DL, Johannsen NM, Lavie CJ, Earnest CP, Church TS. The role of exercise and physical activity in weight loss and maintenance. *Prog Cardiovasc Dis*. (2014) 56:441–7. doi: 10.1016/j.pcad.2013.09.012
- Melby CL, Paris HL, Foright RM, Peth J. Attenuating the biologic drive for weight regain following weight loss: must what Goes down always go Back up? *Nutrients*. (2017) 9:E468. doi: 10.3390/nu9050468
- Mandsager K, Harb S, Cremer P, Phelan D, Nissen SE, Jaber W. Association of Cardiorespiratory Fitness with Long-term Mortality among Adults Undergoing Exercise Treadmill Testing. *JAMA Netw Open*. (2018) 1:e183605. doi: 10.1001/jamanetworkopen.2018.3605
- Hassan Y, Head V, Jacob D, Bachmann MO, Diu S, Ford J. Lifestyle interventions for weight loss in adults with severe obesity: a systematic review. *Clin Obes*. (2016) 6:395–3. doi: 10.1111/cob.12161
- Hunter GR, Plaisance EP, Carter SJ, Fisher G. Why intensity is not a bad word: optimizing health status at any age. *Clin Nutr*. (2018) 37:56–60. doi: 10.1016/j.clnu.2017.02.004
- Ross R, Dagnone D, Jones PJ, Smith H, Paddags A, Hudson R, et al. Reduction in obesity and related comorbid conditions after diet-induced weight loss or exercise-induced weight loss in men. A randomized, controlled trial. *Ann Intern Med*. (2000) 133:92–3. doi: 10.7326/0003-4819-133-2-200007180-00008
- Tan R, Nederveen JP, Gillen JB, Joanisse S, Parise G, Tarnopolsky MA, et al. Skeletal muscle fiber-type-specific changes in markers of capillary and mitochondrial content after low-volume interval training in overweight women. *Physiol Rep*. (2018) 6:e13597. doi: 10.14814/phy2.13597
- Kong Z, Fan X, Sun S, Song L, Shi Q, Nie J. Comparison of high-intensity interval training and moderate-to-vigorous continuous training for Cardiometabolic health and exercise enjoyment in obese young women: a randomized controlled trial. *PLoS One*. (2016) 11:e0158589. doi: 10.1371/journal.pone.0158589
- Mangiamarchi P, Caniquero A, Ramírez-Campillo R, Cárdenas P, Morales S, Cano-Montoya J, et al. Effects of high-intensity interval training and nutritional education in patients with type 2 diabetes. *Rev Med Chil*. (2017) 145:845–3. doi: 10.4067/s0034-98872017000700845
- Wewege M, van den Berg R, Ward RE, Keech A. The effects of high-intensity interval training vs. moderate-intensity continuous training on body composition in overweight and obese adults: a systematic review and meta-analysis. *Obes Rev*. (2017) 18:635–6. doi: 10.1111/obr.12532
- Honkala SM, Motiani KK, Eskelinen J-J, Savolainen A, Saunavaara V, Virtanen KA, et al. Exercise training reduces Intrathoracic fat regardless of defective glucose tolerance. *Med Sci Sports Exerc*. (2017) 49:1313–22. doi: 10.1249/MSS.0000000000001232
- Schmitt J, Lindner N, Reuss-Borst M, Holmberg H-C, Sperlich B. A 3-week multimodal intervention involving high-intensity interval training in female cancer survivors: a randomized controlled trial. *Physiol Rep*. (2016) 4:e12693. doi: 10.14814/phy2.12693
- De la Maza Cave MP. Reducción Sérica De Productos Finales De Glicación Avanzada Séricos. *Nutricion Hospitalaria*. (2015) 6:2511–7. doi: 10.3305/nh.2015.31.6.8936
- Gillen JB, Percival ME, Ludzki A, Tarnopolsky MA, Gibala MJ. Interval training in the fed or fasted state improves body composition and muscle oxidative capacity in overweight women. *Obesity (Silver Spring)*. (2013) 21:2249–55. doi: 10.1002/oby.20379
- Uribarri J, Woodruff S, Goodman S, Cai W, Chen X, Pyzik R, et al. Advanced glycation end products in foods and a practical guide to their reduction in the diet. *J Am Diet Assoc*. (2010) 110:911–916.e12. doi: 10.1016/j.jada.2010.03.018
- Echeverría G, Urquiaga I, Concha MJ, Dussallant C, Villarroel L, Velasco N, et al. Validación de cuestionario autoaplicable para un índice de alimentación mediterránea en Chile. *Rev Méd Chile*. (2016) 144:1531–43. doi: 10.4067/S0034-98872016001200004
- Gajardo H, Barrera G. Quality control of bone densitometry: precision, reproducibility, and clinical application. *Rev Med Chil*. (1998) 126:56–62.
- Berger J, Bunout D, Barrera G, de la Maza MP, Henriquez S, Leiva L, et al. Rectus femoris (RF) ultrasound for the assessment of muscle mass in older people. *Arch Gerontol Geriatr*. (2015) 61:33–8. doi: 10.1016/j.archger.2015.03.006
- Bunout D, Barrera G, Leiva L, Gattas V, de la Maza MP, Avendaño M, et al. Effects of vitamin D supplementation and exercise training on physical performance in Chilean vitamin D deficient elderly subjects. *Exp Gerontol*. (2006) 41:746–52. doi: 10.1016/j.exger.2006.05.001
- Balady GJ, Arena R, Sietsema K, Myers J, Coke L, Fletcher GF, et al. Clinician's guide to cardiopulmonary exercise testing in adults: a scientific statement from the American Heart Association. *Circulation*. (2010) 122:191–5. doi: 10.1161/CIR.0b013e3181e52e69
- Moseley L, Jeukendrup AE. The reliability of cycling efficiency. *Med Sci Sports Exerc*. (2001) 33:621–7. doi: 10.1097/00005768-200104000-00017
- Davidian M, Giltinan DM. Analysis of repeated measurement data using the nonlinear mixed effects model. *Chemom Intell Lab Syst*. (1993) 20:1–24. doi: 10.1016/0169-7439(93)80017-C
- Henríquez S, Monsalves-Álvarez M, Jimenez T, Barrera G, Hirsch S, de la Maza MP, et al. Effects of two training modalities on body fat and insulin resistance in postmenopausal women. *J Strength Cond Res*. (2017) 31:2955–64. doi: 10.1519/JSC.0000000000002089
- Tieland M, Trouwborst I, Clark BC. Skeletal muscle performance and ageing: skeletal muscle performance and ageing. *J Cachexia Sarcopenia Muscle*. (2018) 9:3–19. doi: 10.1002/jcsm.12238
- Goodpaster BH, He J, Watkins S, Kelley DE. Skeletal muscle lipid content and insulin resistance: evidence for a paradox in endurance-trained athletes. *J Clin Endocrinol Metabol*. (2001) 86:5755–61. doi: 10.1210/jcem.86.12.8075
- Johnstone AM. Fasting – the ultimate diet? *Obes Rev*. (2007) 8:211–2. doi: 10.1111/j.1467-789X.2006.00266.x
- Wigodski S, Carrasco F, Bunout D, Barrera G, Hirsch S, de la Maza MP. Sarcopenia: the need to establish different cutoff points of fat-free mass for the Chilean population. *Nutrition*. (2019) 57:217–4. doi: 10.1016/j.nut.2018.05.031
- Bunout D, Barrera G, Avendaño M, de la Maza P, Gattas V, Leiva L, et al. Results of a community-based weight-bearing resistance training programme for healthy Chilean elderly subjects. *Age Ageing*. (2005) 34:80–3. doi: 10.1093/ageing/afi005
- Bonafiglia JT, Rotundo MP, Whittall JP, Scribbans TD, Graham RB, Gurd BJ. Inter-individual variability in the adaptive responses to endurance and Sprint interval training: a randomized crossover study. *PLoS One*. (2016) 11:e0167790. doi: 10.1371/journal.pone.0167790
- Sayón-Orea C, Razquin C, Bulló M, Corella D, Fitó M, Romaguera D, et al. Effect of a nutritional and behavioral intervention on energy-reduced Mediterranean diet adherence among patients with metabolic syndrome: interim analysis of the PREDIMED-plus randomized clinical trial. *JAMA*. (2019) 322:1486–99. doi: 10.1001/jama.2019.14630
- Schoenfeld BJ. The mechanisms of muscle hypertrophy and their application to resistance training. *J Strength Cond Res*. (2010) 24:2857–72. doi: 10.1519/JSC.0b013e3181e840f3
- Blue MNM, Smith-Ryan AE, Trexler ET, Hirsch KR. The effects of high intensity interval training on muscle size and quality in overweight and obese adults. *J Sci Med Sport*. (2018) 21:207–2. doi: 10.1016/j.jsams.2017.06.001
- Di Donato DM, West DWD, Churchward-Venne TA, Breen L, Baker SK, Phillips SM. Influence of aerobic exercise intensity on myofibrillar and mitochondrial protein synthesis in young men during early and late postexercise recovery. *Am J Physiol Endocrinol Metab*. (2014) 306:E1025–32. doi: 10.1152/ajpendo.00487.2013
- Weatherwax RM, Harris NK, Kilding AE, Dalleck LC. The incidence of training responsiveness to cardiorespiratory fitness and cardiometabolic measurements following individualized and standardized exercise prescription: study protocol for a randomized controlled trial. *Trials*. (2016) 17:601. doi: 10.1186/s13063-016-1735-0

47. Campbell WW, Kim JE, Amankwaah AF, Gordon SL, Weinheimer-Haus EM. Higher Total protein intake and change in Total protein intake affect body composition but not metabolic syndrome indexes in middle-aged overweight and obese adults who perform resistance and aerobic exercise for 36 weeks. *J Nutr.* (2015) 145:2076–83. doi: 10.3945/jn.115.213595
48. Pickering C, Kiely J. Do non-responders to exercise exist-and if so, what should we do about them? *Sports Med.* (2019) 49:1–7. doi: 10.1007/s40279-018-01041-1
49. Zapata-Lamana R, Henríquez-Olguín C, Burgos C, Meneses-Valdés R, Cigarroa I, Soto C, et al. Effects of polarized training on Cardiometabolic risk factors in young overweight and obese women: a randomized-controlled trial. *Front Physiol.* (2018) 9:1287. doi: 10.3389/fphys.2018.01287
50. Marson EC, Delevatti RS, Prado AKG, Netto N, Krueger LFM. Effects of aerobic, resistance, and combined exercise training on insulin resistance markers in overweight or obese children and adolescents: a systematic review and meta-analysis. *Prev Med.* (2016) 93:211–8. doi: 10.1016/j.ypmed.2016.10.020
51. Phillips BE, Kelly BM, Lilja M, Ponce-González JG, Brogan RJ, Morris DL, et al. A practical and time-efficient high-intensity interval training program modifies cardiometabolic risk factors in adults with risk factors for type II diabetes. *Front Endocrinol (Lausanne).* (2017) 8:229. doi: 10.3389/fendo.2017.00229
52. Gagnon DD, Dorman S, Ritchie S, Mutt SJ, Stenbäck V, Walkowiak J, et al. Multi-day prolonged low- to moderate-intensity endurance exercise mimics training improvements in metabolic and oxidative profiles without concurrent chromosomal changes in healthy adults. *Front Physiol.* (2019) 10:1123. doi: 10.3389/fphys.2019.01123
53. Ghamarchehreh ME, Shamsoddini A, Alavian SM. Investigating the impact of eight weeks of aerobic and resistance training on blood lipid profile in elderly with non-alcoholic fatty liver disease: a randomized clinical trial. *Gastroenterol Hepatol Bed Bench.* (2019) 12:190–6.
54. Mann S, Beedie C, Jimenez A. Differential effects of aerobic exercise, resistance training and combined exercise modalities on cholesterol and the lipid profile: review, synthesis and recommendations. *Sports Med.* (2014) 44:211–1. doi: 10.1007/s40279-013-0110-5
55. Vella CA, Taylor K, Drummer D. High-intensity interval and moderate-intensity continuous training elicit similar enjoyment and adherence levels in overweight and obese adults. *Eur J Sport Sci.* (2017) 17:1203–11. doi: 10.1080/17461391.2017.1359679
56. Batacan RB, Duncan MJ, Dalbo VJ, Tucker PS, Fenning AS. Effects of high-intensity interval training on cardiometabolic health: a systematic review and meta-analysis of intervention studies. *Br J Sports Med.* (2017) 51:494–3. doi: 10.1136/bjsports-2015-095841