



Lactobacillus plantarum Alleviates Obesity by Altering the Composition of the Gut Microbiota in High-Fat Diet-Fed Mice

Yong Ma, Yanquan Fei, Xuebing Han, Gang Liu and Jun Fang*

Hunan Provincial Engineering Research Center of Applied Microbial Resources Development for Livestock and Poultry, College of Bioscience and Biotechnology, Hunan Agricultural University, Changsha, China

OPEN ACCESS

Edited by:

Yong Su,
Nanjing Agricultural University, China

Reviewed by:

Shunqing Liang,
University of Massachusetts Medical
School, United States
Shuwei Xie,
University of Nebraska Medical
Center, United States

*Correspondence:

Jun Fang
fangjun1973@hunau.edu.cn

Specialty section:

This article was submitted to
Nutrition and Microbes,
a section of the journal
Frontiers in Nutrition

Received: 18 May 2022

Accepted: 10 June 2022

Published: 30 June 2022

Citation:

Ma Y, Fei Y, Han X, Liu G and Fang J
(2022) *Lactobacillus plantarum*
Alleviates Obesity by Altering the
Composition of the Gut Microbiota in
High-Fat Diet-Fed Mice.
Front. Nutr. 9:947367.
doi: 10.3389/fnut.2022.947367

Metabolic disorders and intestinal flora imbalance usually accompany obesity. Due to its diverse biological activities, *Lactobacillus plantarum* is widely used to alleviate various diseases as a probiotic. Here, we show that *L. plantarum* can reduce the body weight of mice fed high-fat diets, reduce fat accumulation, and enhance mice glucose tolerance. Our results show that *L. plantarum* can significantly reduce the expression of DGAT1 and DGAT2, increase the expression of Cpt1a, and promote the process of lipid metabolism. Further data show that *L. plantarum* can increase the SCFA content in the colon and reverse the intestinal flora disorder caused by HFD, increase the abundance of *Bacteroides*, and *Bifidobacteriales*, and reduce the abundance of *Firmicutes* and *Clostridiales*. Finally, through Pearson correlation analysis, we found that *Bacteroides* and SCFAs are positively correlated, while *Clostridiales* are negatively correlated with SCFAs. Therefore, we believe that *L. plantarum* can regulate the structure of the intestinal microbial community, increase the production of SCFAs and thus regulate lipid metabolism.

Keywords: high fat diet, *Lactobacillus plantarum*, SCFA, fat metabolism, intestinal microbes

INTRODUCTION

Accumulating evidence points a high-fat diet will increase the potential risk of metabolic diseases (1). Long-term excessive intake of high-energy foods can lead to the accumulation of fat, which can lead to obesity. Obesity and the development of metabolic disorders have caused great troubles for the world health security authorities. According to the World Health Organization, over the past 30 years, more than 9 million children have been considered overweight in the world (<https://www.who.int/zh>). According to the U.S. Centers for Disease Control and Prevention, the national obesity rate from 2017 to 2018 was 42.4% (<https://www.cdc.gov/obesity/data/adult.html>). The obesity caused by this long-term high-fat diet will further cause metabolic diseases such as diabetes and non-alcoholic fatty liver (2, 3). Most importantly, HFD-induced obesity is usually accompanied by changes in the structure of the gut microbial community (4), and gut microbes are a vital part of the host's energy intake (5). This reduction in gut microbial diversity and changes in the abundance of specific microorganisms may be determinants of lipid metabolism and obesity. Intestinal microbes are involved in the process from lipid synthesis and absorption to lipid metabolism in obesity (6).

This also causes obesity to be accompanied by changes in the intestinal microbial community. The dominance of *Bacteroides* in normal individuals is caused by the fact that *Bacteroides* can ferment the dietary fiber that the host cannot digest and absorb for energy. However, when fat accumulates, this microorganism community will change, and the abundance of *Firmicutes* will increase significantly in obese hosts (7). Changes in the community structure of intestinal microbes can alter the secretion of intestinal hormones, including peptide YY, GLP-1, leptin, and weaken their effects of inhibiting gastric emptying, reducing appetite, and increasing satiety (8).

With a deep understanding of intestinal microbes, the mechanism of action of probiotics and host flora has been well known by people. Probiotics can produce anti-pathogenic microbial products, which are biologically compatible with the host or interact directly with the host's immune cells, regulate host metabolism, etc. (9). As a probiotic, *Lactobacillus plantarum* has been used to treat and alleviate various diseases due to its diversified functions (10). Through genome-wide association analysis and non-targeted metabolomics analysis, Mao et al. found that *L. plantarum* and its metabolites can significantly increase the level of the neurotransmitter γ -aminobutyric acid in the hippocampus (11). *L. plantarum* has shown an irreplaceable role in intestinal health. *L. plantarum* can activate PPAR- α and restore the structure of mitochondria and ultimately repair the intestinal barrier (12). Further studies have found that bacteriocin, a metabolite of *L. plantarum*, can prevent the loss of Caco-2 cell transcellular permeability and inhibit the expression of inflammatory factors (13). Salomé-Desnoullez et al. developed fluorescent *L. plantarum* strains to track and monitor its dynamic role in intestinal inflammation and found that *L. plantarum* mainly colonizes the intestinal lumen and mucous layer and directly acts on damaged epithelial cells (14). Recent experiments have shown that most of the probiotics acting on the intestine can inhibit obesity, so we suspect that *L. plantarum*, with multiple biological activities, plays an essential role in lipid metabolism.

MATERIALS AND METHODS

Animal and Experimental Design

This animal experiment completely follows the Guidelines for Care and Use of Laboratory Animals of Hunan Agricultural University. Twenty-four 8-week-old C57BL/6J mice [purchased from Hunan Sileike Jingda Co (Changsha, China)] with an average weight of 18 g were acclimated for 7 days in a sterile environment. They were divided into three groups with 8 mice in each group by completely random allocation. The first group was treated with the basal diet (CON), the second group was treated with high-fat diet (HFD), and the third group was treated with *L. plantarum* and high-fat diet (HFD-LP). During the experiment, mice can drink and eat freely. In 1–4 weeks, the HFD group and HFD-LP group were fed with high-fat diets. We administered *L. plantarum* (1×10^8 cfu) to mice in the HFD-LP group for 5–8 weeks, and the other two groups were administered the same dose of normal saline (Figure 1A). Collection of mice epididymal adipose tissue: the mouse testis was found in the

lower abdomen and lifted with tweezers. The white fat attached to it was epididymal fat and stripped along the vas deferens to the end of the testis. Inguinal fat: Inguinal fat was cut bluntly between the skin and muscle of the hind limb of mice with ophthalmic scissors, and the skin was capped at the tip of the scissors to avoid cutting off subcutaneous fat. Then the skin was longitudinally cut to expose the inguinal fat, the inguinal lymph nodes were stripped, and the adipose tissue was cut off. Perirenal fat: The kidney was lifted with tweezers and all adipose tissues were cut off along the surface of the renal fascia. All adipose tissues were weighed using a one-tenth balance. Serum samples were collected for serologic analysis. Liver tissue, intestinal contents, and mouse faces were collected and immediately snap-frozen in liquid nitrogen, then transferred and stored in a -80° refrigerator.

Glucose and Insulin Tolerance Tests

The intraperitoneal glucose tolerance test (IPGTT) was performed after the mice were fasted for 6 h. Each mouse was injected intraperitoneally with glucose (2 g/kg body weight), and the blood glucose of the mice tail vein was measured with a blood glucose meter for the next 0, 15, 30, 60, and 120 min. The insulin tolerance test (ITT) was performed after the mice were fasted for 6 h. Each mouse was injected intraperitoneally with insulin (0.75 U/kg body weight), and the blood glucose of the mice tail vein was measured with a blood glucose meter for the next 0, 15, 30, 60, and 120 min.

Fat Histopathology

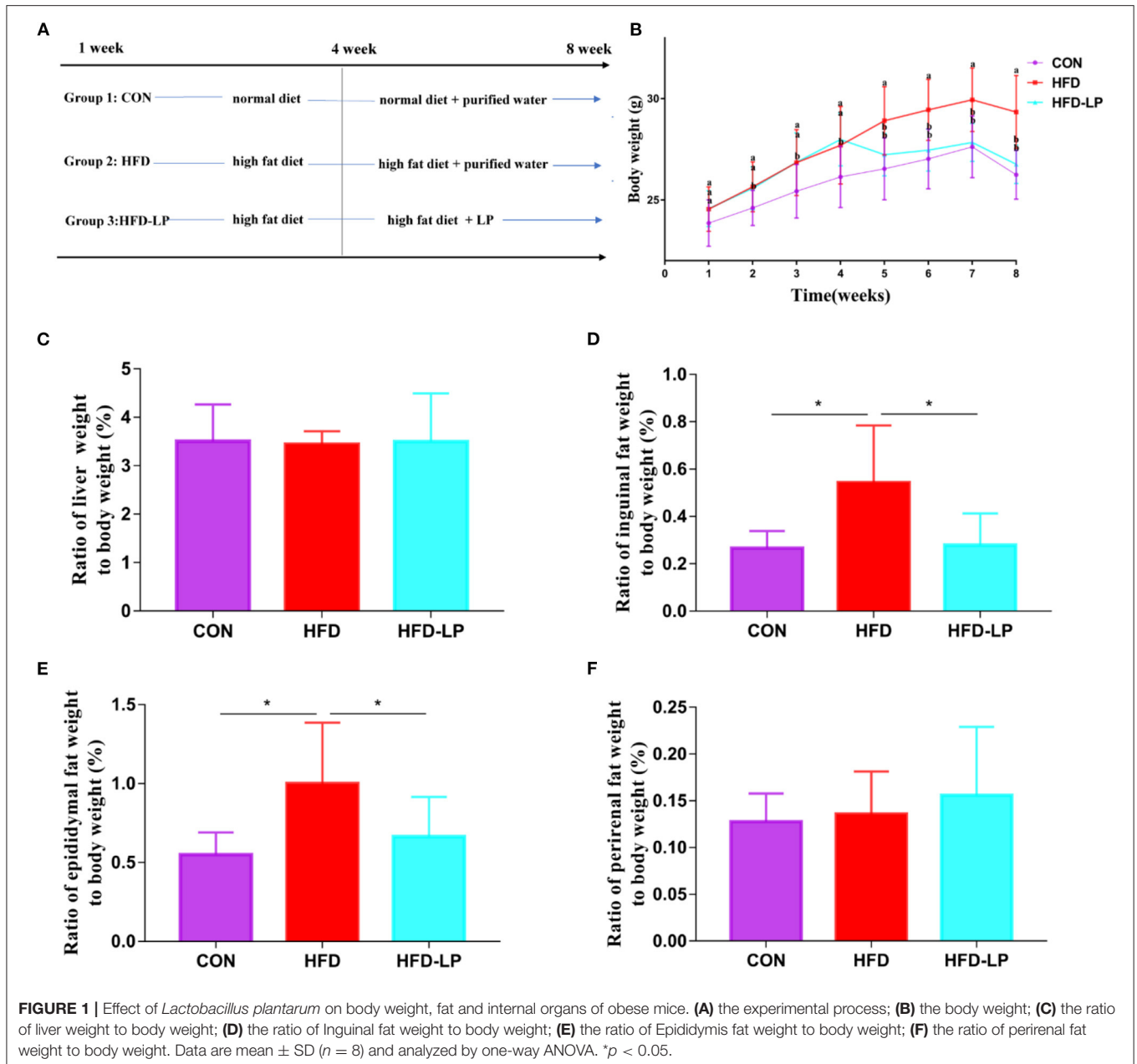
Use gradient concentration of xylene and ethanol solution to dehydrate and transparent adipose tissue. Embed the tissue block with melted paraffin, slice the wax block and stain it with Hematoxylin and Eosin, finally use alcohol for dehydration, and add neutral gum to mount the slide.

Serologic Analysis

The content of alanine aminotransferase, aspartate aminotransferase, blood glucose, and triglyceride, high-density lipoprotein and low-density lipoprotein (n=8) was measured using kits and a microplate reader (14041717, VT, United States).

Real-Time Fluorescence-Based Quantitative PCR

Take the liver tissue and grind it with liquid nitrogen, grind it into powder, transfer it into a 1.5 ml EP tube and mix with 1 ml Trizol, and centrifuge at 12,000 g for 10 min at 4°C . Add 120 μl of chloroform to the supernatant, centrifuge for 15 min at 4°C and 1,200 r, take 300 μl of supernatant into another centrifuge tube, add an equal volume of isopropanol to the supernatant, centrifuge at 4°C , 1,000 r for 10 min, remove the supernatant, add 600 μl of 75% ethanol to wash the precipitate, centrifuge at 8,000 r, 4°C for 10 min, remove the ethanol, add an appropriate amount of DNAase Free Water, and use a reverse transcription kit (gDNA Eraser) for reverse transcription. The resulting cDNA was analyzed by conducting the real-time quantitative polymerase chain reaction with a SuperReal PreMix Plus (SYBR Green) reagent kit (TIANGEN, Beijing, China) with various primers (Table 1).



SCFA Content in Feces

The analysis was performed using HP7890B gas chromatograph (Agilent) equipped with flame ionization detector and DB-FF capillary column (internal diameter 0.25 mm, length 30 m, film thickness 0.5 μ m; temperature 40–250°C; Agilent Technologies, USA). The temperature of the injector and detector are 200 and 270°C, respectively. The carrier gas uses high-purity and high-purity nitrogen with a flow rate of 40 ml/min. Heating program: the initial temperature is 80°C, hold for 0.5 min, 5°C/min rise to 130°C, hold for 2 min, and then rise at 20–240°C/min, hold for 1 min. Confirm the types of short-chain fatty acids and calculate the content of short-chain fatty acids by comparing the retention time and peak area of the sample and the

standard. The content of short-chain fatty acids is expressed in μ g/g chyme.

16S Ribosomal RNA Amplicon Sequencing

Stool samples were extracted from microbial DNA using QIAamp DNA Stool Mini Kit (QIAGEN, Hilden, Germany). The sequence of the extracted DNA V3-V4 region was analyzed by high-throughput sequencing technology. First, the purified DNA was used as a template, and the universal primers 357F 5'-ACTCCTACGGRAGGCAGCAG-3' and 806R 5'-GGACTACHVGGGTWTCTAAT-3' primers were used for PCR amplification, and these primers were also fused with part of Miseq sequencing primers. The amplified products were

TABLE 1 | Primers for this study.

Primers	Nucleotide sequence of primers (5'–3')
β-actin	F: TGTCACCTTCCAGCAGATGT R: AGCTCAGTAACAGTCCGCCTAGA
DGAT 2	F: AGTGGCAATGCTATCATCATCGT R: TCTTCTGGACCCATCGCCCCAGGA
DGAT 1	F: TTCGCTCTGGGCATT R: AGAATCGGCCACAAATCCA
Cpt1a	F: CAGTCGACTCACCTTTCTCTG R: CATCATGGCTTGTCTCAAGTG
TNF-α	F: ATGAGAAGTCCCAAATGGC R: CTCCACTTGGTGGTTTGCTA
IL-6	F: CCTCTCTGCAAGAGACTTCCAT R: AGTCTCCTCTCCGACTTGT
IL-1β	F: TGCCACCTTTTGACAGTGATG R: AAGGTCCACGGGAAAGACAC

subjected to 1.2% agarose gel electrophoresis, the samples with good results were run on 2% agarose gel, and the electrophoresis bands were cut and recovered, and the recovered product was used as a template for PCR amplification (8 cycles). Add adapters, sequencing primers, and tag sequences required for sequencing on the Illumina platform at both ends of the target fragment. Use AxyPrepDNA gel recovery kit (AXYGEN company) to recover all PCR products, and use FTC-3000™ Real-Time PCR instrument for fluorescence quantification, complete library construction after equal molar ratio mixing, and computer sequencing (illumina miseq PE300). Analyze the offline data, use mothur (Version 1.33.3) to analyze α diversity and β diversity, and use R language to map the species composition at the level of the phyla, the family, the genera and the species, and the species differences between groups.

Data Analysis

All data in this study were analyzed using SPSS 22.0, expressed as mean \pm standard error of the mean (SEM). The difference between the means of the groups was analyzed using a one-way ANOVA pair and evaluated using Tukey multiple comparisons. $P < 0.05$ was regarded as a significant difference.

RESULTS

Lactobacillus plantarum Can Reduce HFD-Induced Body Weight and Fat Gain

Starting from the second week, the weight of the mice in the HFD and HFD-LP groups fed with high-fat diets was significantly higher than that in the CON group fed with ordinary diets, and the gap reached the largest in the fourth. From the fifth week, we gave the HFD-LP group an intragastric administration of *L. plantarum*. The bodyweight of the HFD-LP group was significantly lower than that of the HFD group and dropped to the same level as the CON group (Figure 1B). There was no significant difference in the ratio of the liver (Figure 1C) and

perirenal fat weight (Figure 1F) to body weight (%) between the three groups. Compared with the HFD group, the ratio of inguinal fat (Figure 1D) and epididymal fat (Figure 1E) weight to body weight (%) of the CON and HFD-LP groups was significantly reduced.

Lactobacillus plantarum Can Enhance Glucose Tolerance, Insulin Resistance and Reduce Adipocyte Size in Obese Mice

In the intraperitoneal glucose tolerance test, we found that all mice had a significant increase in blood glucose after 15 min of intraperitoneal injection of glucose, but within 30–120 min, compared with the HFD group, the mice blood glucose of CON group and the HFD-LP group decreased significantly (Figure 2A). The area under the glucose curve (AUC) of the HFD group mice was significantly larger than that of the CON group and HFD-LP group (Figure 2B). In the insulin tolerance test, we found that compared with the CON group and the CON-LP group, the initial blood glucose of the HFD group mice was significantly increased, and the insulin sensitivity was significantly reduced (Figure 2C). The area under the glucose curve (AUC) of the HFD group mice was significantly larger than that of the CON group and HFD-LP group (Figure 2D).

We performed HE staining sections on epididymal fat and inguinal fat of mice and found that compared with the CON group and the CON-LP group, the size of the adipocytes in the epididymal fat of the HFD group increased significantly (Figure 2E). The size of the adipocytes in the inguinal fat of the CON group was significantly smaller than that of the HFD group and HFD-LP group, while the size of the adipocytes in the inguinal fat of the HFD-LP group was significantly smaller than that of the HFD group (Figure 2F).

Lactobacillus plantarum Can Improve the Biochemical Indexes of Obese Mice

The mouse serum biochemical indicators showed that the serum levels of alanine aminotransferase, blood glucose, and triglyceride in the HFD group were significantly higher than those in the CON group and the HFD-LP group (Figures 3A,C,D). There was no significant difference in the content of aspartate aminotransferase in mouse serum among the three groups (Figure 3B). The HFD group and HFD-LP group mice serum high-density lipoprotein and low-density lipoprotein levels were significantly higher than those in the CON group (Figures 3E,F).

Lactobacillus plantarum Can Improve Gene Expression and Substance Content in the Liver

In order to explore the alleviating effect of *L. plantarum* on chronic liver damage caused by obesity, we measured the expression of inflammatory factors and fat metabolism genes in liver tissues. The results show that compared with the CON and HFD-LP groups, DGAT1, DGAT2, TNF- α , IL-6, and IL-1 β mRNA expression in the liver of the HFD group increased significantly (Figures 4A,B,D–F). The expression of Cpt1a in the liver of the HFD-LP group was significantly higher than

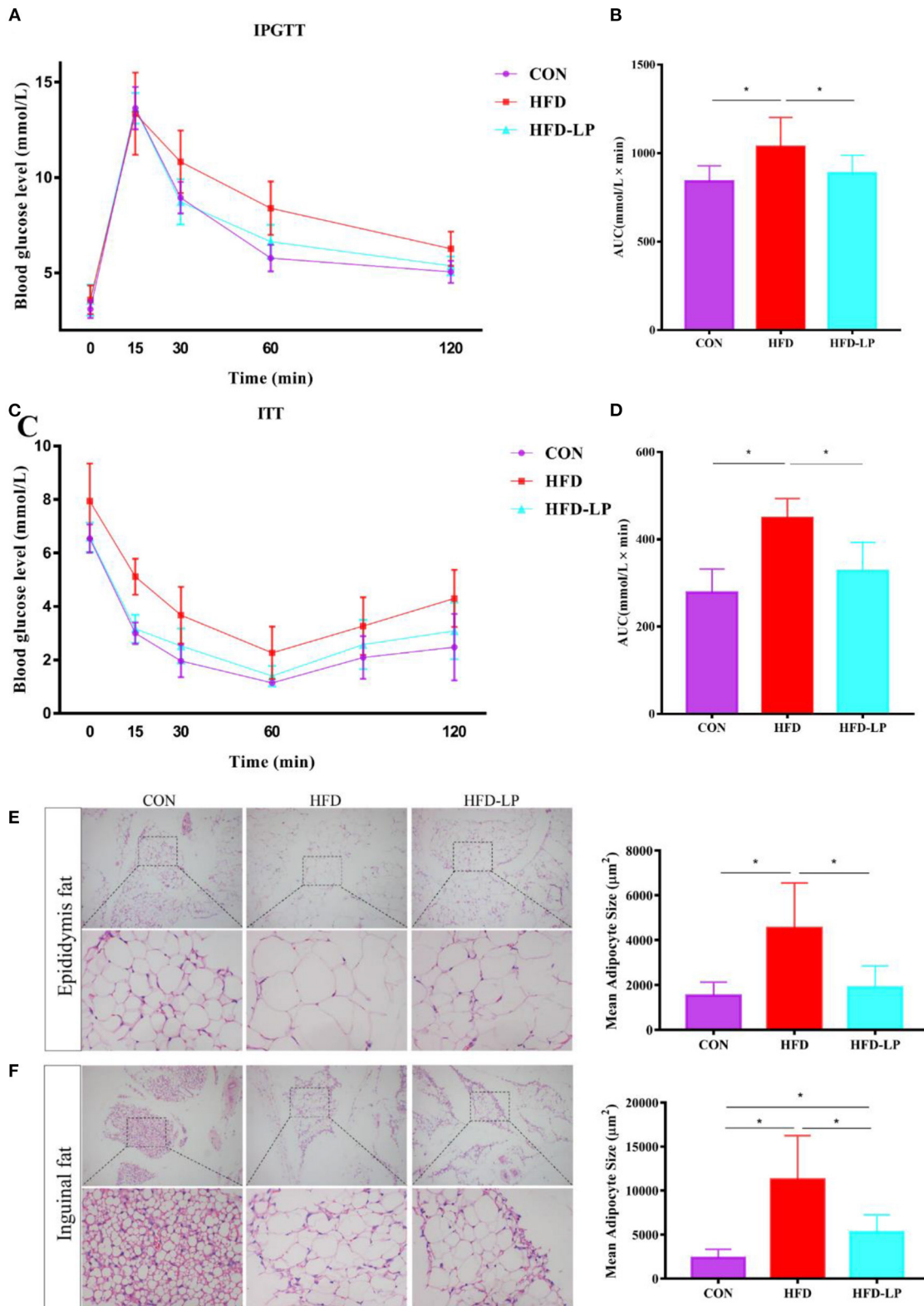
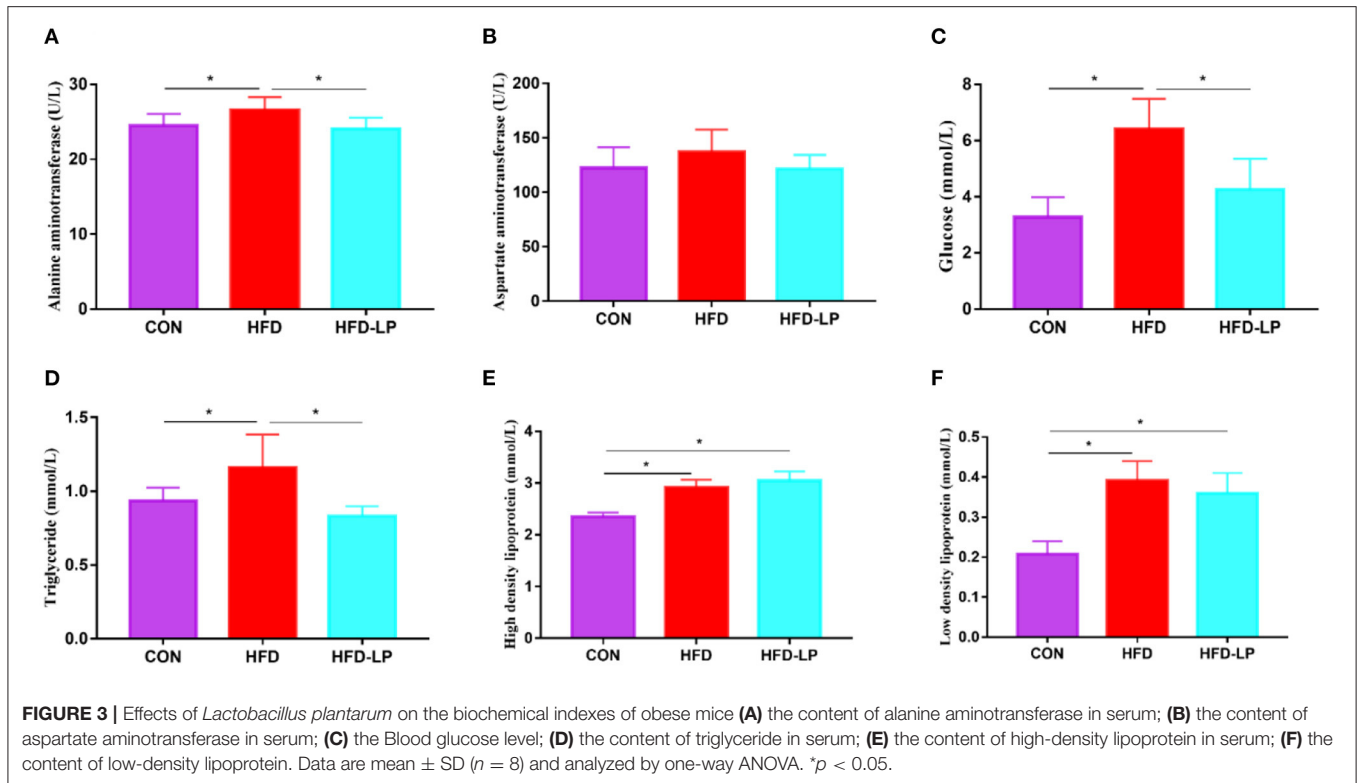


FIGURE 2 | Effect of *Lactobacillus plantarum* on glucose tolerance, insulin resistance and fat morphology in obese mice. **(A)** Plasma glucose level in mouse glucose tolerance test; **(B)** The area under the glucose curve (AUC) using the trapezoidal rule; **(C)** Plasma glucose level in mouse insulin tolerance test; **(D)** The area under the glucose curve (AUC) using the trapezoidal rule. **(E)** H&E staining on epididymal fat depots. Representative sections from inguinal fat depots of all groups (400×). Histological analysis of mean adipose cell size. **(F)** H&E staining on inguinal fat depots. Representative sections from inguinal fat depots of all groups (400×). Histological analysis of mean adipose cell size. Data are mean ± SD (n = 8) and analyzed by one-way ANOVA. *p < 0.05.



that in the HFD group (Figure 4C). We also further explored the effect of *L. plantarum* on the ability of the liver to resist oxidative stress. The results showed that high-fat diets significantly increased the levels of triglyceride, total cholesterol, and MDA in the liver tissues of mice. The intragastric treatment of *L. plantarum* significantly reduced the content of these substances and improved the ability of mice to resist oxidative stress (Figures 4G–I).

Lactobacillus plantarum Can Improve SCFAs Content in Mouse Feces

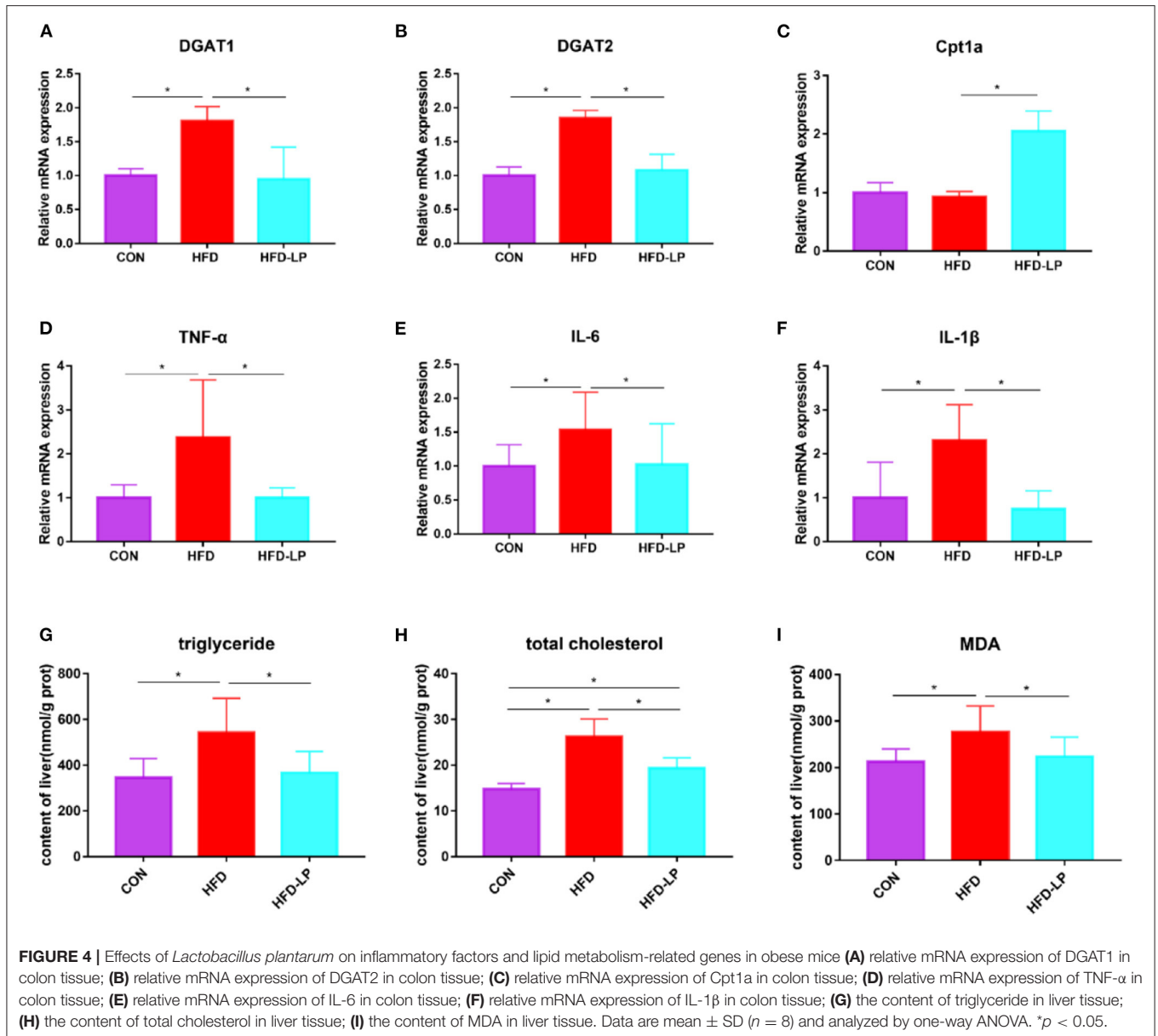
As we all know, short-chain fatty acids can regulate the body's metabolism. Therefore, we determined the SCFAs content in feces and explored the regulation effect of *L. plantarum* on host intestinal metabolism. Compared with the CON group, the contents of acetic acid, propionic acid, isobutyric acid, butyric acid, valeric acid and total SCFA in the feces of the HFD group were significantly reduced (Figures 5A–E,G). But compared with the HFD group, the levels of acetic acid, propionic acid, valeric acid, isovaleric acid and total SCFA in the feces of the HFD-LP group increased significantly (Figures 5A,B,E–G).

Lactobacillus plantarum Can Change the Colonic Microbial Composition of Obese Mice

Finally, we determined the structure of the colonic microbial community to explore the effect of *L. plantarum* on the homeostasis of the mouse intestinal microenvironment. The major bacteria in the colon are *Bacteroidetes*, *Firmicutes* and

Verrucomicrobia in the Phylum, accounting for over 97%. The proportion of *Bacteroidetes* is 57.25, 54.39, and 63.28%, that of *Firmicutes* is 30.56, 43.37, and 33.97%, that of *Verrucomicrobia* is 12.50, 1.21, and 0.66% in the CON group, HFD group and HFD-LP group, respectively (Figure 6A). Compared with the CON group, the expression abundance of *Firmicutes* in the colon of the HFD group increased significantly, while the expression abundance of *Verrucomicrobia* decreased significantly ($p < 0.05$). Compared with the HFD group, the expression abundance of *Bacteroidetes* in the colon of the HFD-LP group increased significantly, while the expression abundance of *Firmicutes* decreased significantly ($p < 0.05$). The expression abundance of *Verrucomicrobia* in the colon of the HFD-LP group was significantly lower than that of the CON group ($p < 0.05$).

The top ten bacteria at Class were showed in Figure 6B. The most colonic bacterial are *Bacteroidia*, *Clostridia* and *Verrucomicrobiae*, accounting for more than 90%. The proportion of *Bacteroidia* is 57.25, 54.29, and 63.27%, that of *Clostridia* is 26.45, 39.92, and 29.49%, that of *Verrucomicrobiae* is 9.37, 0.91, and 0.49% in the CON group, HFD group and HFD-LP group, respectively (Figure 6B). Compared with the CON group, the expression abundance of *Clostridia* and *Bacilli* in the colon of the HFD group increased significantly ($p < 0.05$). Compared with the HFD group, the expression abundance of *Bacteroidetes* in the colon of the HFD-LP group increased significantly, while the expression abundance of *Clostridia* and *Bacilli* decreased significantly ($p < 0.05$).



The top ten bacterial at the Order were selected and made into bar percentages for analysis. The first three were *Bacteroidales*, *Clostridiales*, and *Verrucomicrobiales*. The proportion of *Bacteroidales* is 57.25, 54.29, and 63.27%, that of *Clostridiales* is 26.45, 39.92, and 24.49%, that of *Verrucomicrobiales* is 9.37, 0.91, and 0.49% in the CON group, HFD group and HFD-LP group, respectively (Figure 6C). Compared with the CON group, the expression abundance of *Clostridiales* in the colon of the HFD group increased significantly ($p < 0.05$). Compared with the HFD group, the expression abundance of *Bacteroidales* and *Bifidobacteriales* in the colon of the HFD-LP group increased significantly, while the expression abundance of *Clostridiales* decreased significantly ($p < 0.05$).

Through LEfSe analysis, we found that *Bifidobacterium* at the Genus level, *Bifidobacteriaceae* at Family level, and *Bacillales* at Order level were significantly enriched in the HFD-LP group, and had significant effects on differences between groups (Figure 7B, $P \leq 0.05$). LEfSe then used linear discriminant analysis (LDA) to estimate the magnitude of the effect of species abundance on the effect of differences in each group. We have screened for differential species with LDA scores > 2 as shown in Figure 7A. Finally, we analyzed the correlation between gut microbes and SCFAs, fat metabolism genes and found *Bacteroidia* is positively correlated with all short-chain fatty acids, while *Clostridia* is negatively correlated with five SCFAs, including acetic acid, propionic acid, and isobutyric acid. *Bacteroidia* also showed a positive correlation with Cpt1a (Figure 7C).

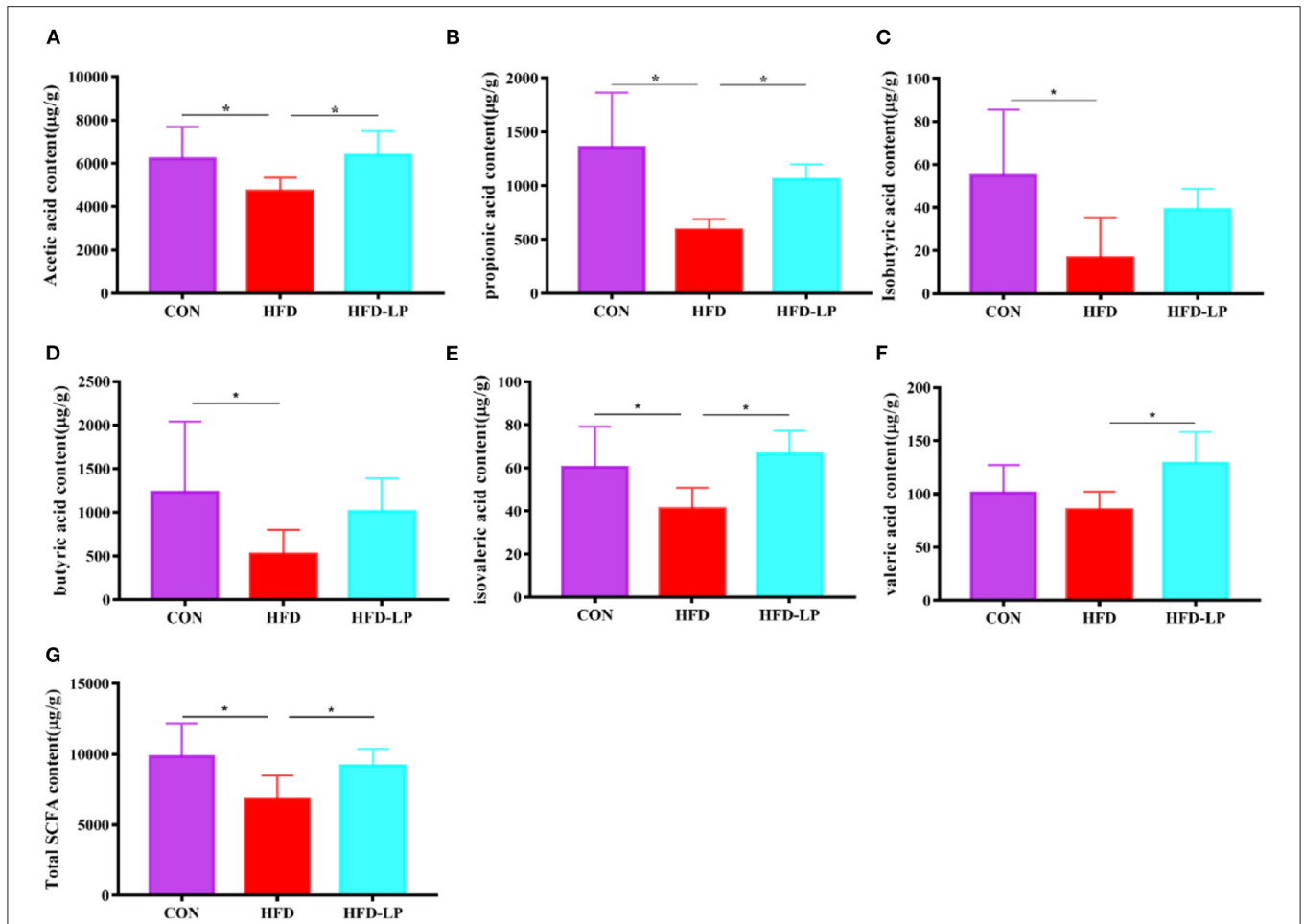


FIGURE 5 | Effect of *Lactobacillus plantarum* on SCFA in obese mice (A) the content of acetic acid; (B) the content of propionic acid; (C) the content of isobutyric acid; (D) the content of butyric acid; (E) the content of isovaleric acid; (F) the content of valeric acid; (G) the content of total SCFA. Data are mean \pm SD ($n = 8$) and analyzed by one-way ANOVA. * $p < 0.05$.

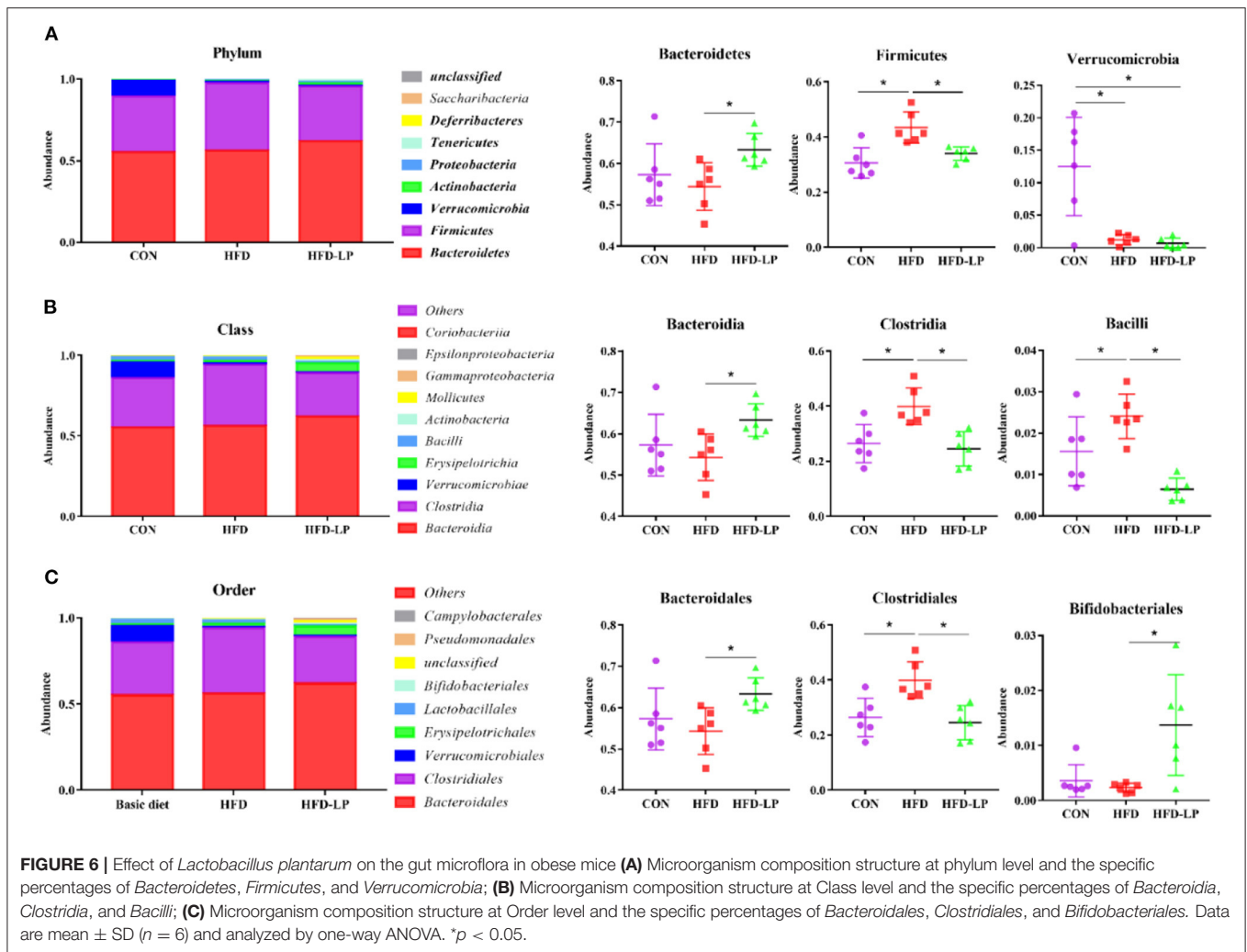
DISCUSSION

Obesity and the chronic metabolic diseases caused by it pose a threat to human health on a large scale in the world (15). We need to find a safe and effective way of treatment and relief, and probiotics are a very effective choice. This is because probiotics have a vital role in gastrointestinal health and the regulation of metabolism (16). In this experiment, we selected a strain of *L. plantarum* with excellent activity and function to explore its effect on lipid metabolism in obese mice. We found that *L. plantarum* can significantly reduce the body weight, fat content, and fat cell size of obese mice. In addition, *L. plantarum* also improves mice's glucose tolerance, insulin resistance, and anti-inflammatory and antioxidant capacity. The most important thing is that it increases the expression of lipid metabolism genes and regulates the morphology of the intestinal microbial community.

Blood glucose is involved in many regulatory processes in lipid metabolism. For example, when glucose concentration in the blood increases, it activates lipid synthetic enzymes, including

fatty acid synthase and acetyl-CoA carboxylase, ultimately leading to glucose storage in lipid form in adipocytes (17). In our experiments, obese mice treated with *L. plantarum* gavage showed a significant decrease in blood glucose levels 30 min after receiving intraperitoneal glucose injections, exhibiting the same ability to regulate blood glucose in normal mice. It indicates that obese mice treated with *L. plantarum* gavage can effectively reduce the abnormal increase in blood glucose values and the accumulation of group glucose in the form of fat. On the other hand, insulin can prevent the liver from producing and releasing glucose through glycogenolysis and inhibition of gluconeogenesis. In our experiment, obese mice did not show the hypoglycemic ability of insulin, but mice treated with *L. plantarum* gavage recovered the hypoglycemic function of insulin (18).

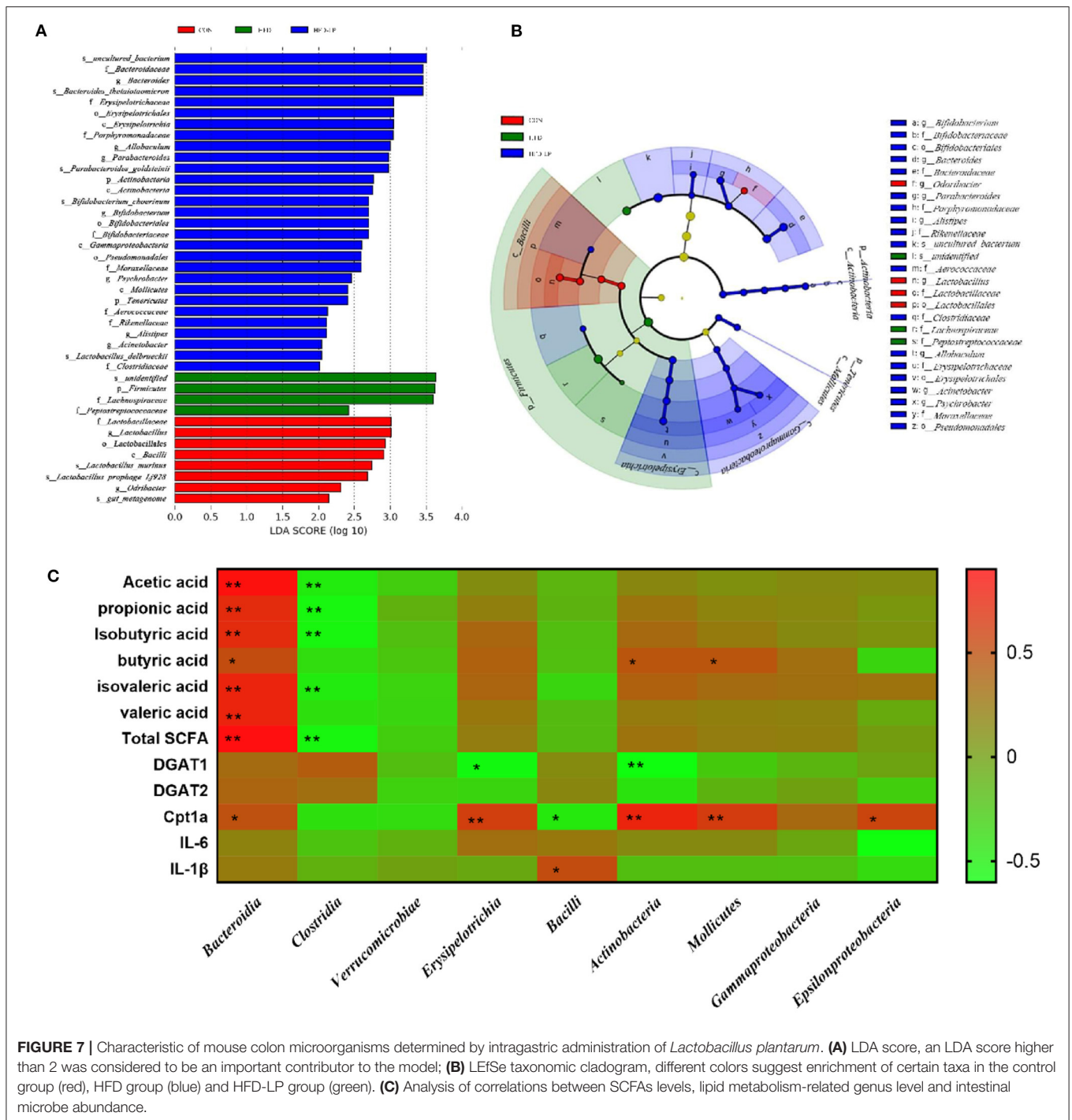
Our study is the first to demonstrate that *L. plantarum* can reduce DGAT gene expression in the intestinal tissues of obese mice. The N-terminal region of DGAT1 and the hydrophobic layer form a dimer. The acyl acceptor lipid



substrate like DAG enters the lipid bilayer from the water transport channel. The acyl chain of acyl CoA is transferred to the receptor, ultimately producing TG (19). Pharmacological manipulations have revealed that DGAT1 activity acts mainly on the gastrointestinal system. The deficiency of DGAT1 in organisms promotes intestinal insulin release and alters lipid absorption, thus improving obesity and its adverse effects (20). And DGAT2 can act synergistically with DGAT1 on TG secretion in hepatocytes (21). Abnormal and excessive accumulation of TGs in organisms can lead to obesity and increase the risk of metabolism-related diseases (22). In our experiments, gavage treatment with *L. plantarum* significantly reduced the abnormal expression of DGAT1 and DGAT2 genes in the intestinal tissues of obese mice and reduced the lipid metabolism-related diseases caused by excessive TG accumulation. Notably, it has been shown that downregulation of the DGAT gene significantly promotes the expression of the CPT1A protein (23), a critical mitochondrial β -oxidation regulatory enzyme involved in long-chain fatty acids, which can dramatically inhibit fat accumulation (24). CPT1A in the outer mitochondrial membrane can catalyze

the reverse transport of acyl-coenzyme A groups to L-carnitine to form acyl-carnitine esters (25). In our experiments, gavage treatment with *L. plantarum* significantly increased CPT1A gene expression, promoted fatty acid oxidation, and reduced fat accumulation.

Previous studies have emphasized the important role of SCFA in microbial regulation of intestinal health (26, 27). SCFA is produced by intestinal *Bacteroides* fermenting polysaccharides and some carbohydrates that are difficult for the host to absorb and digest (28). The percentage abundance of *Bacteroides* in the intestine is also increased by the gavage of *L. plantarum*, and as reported in previous experiments, with the increase of the expression level of *Bacteroides*, the gavage treatment of *L. plantarum* also increased the content of SCFA in the content. Acetic acid can promote the oxidation of fatty acids, increase the energy consumption of the host, and ultimately reduce fat (29). The study of Barbara et al. showed that acetic acid activates the 5'-AMP-activated protein kinase in the intestine, thereby mediating adipokines to regulate lipid metabolism and maintain glucose homeostasis (30). On the other hand, SCFA



can also enhance the organism’s sense of fullness, because acetic acid promotes the circulating levels of GLP-1 and PYY in the body (31).

We have observed that *L. plantarum* can significantly regulate the intestinal microbial community structure of obese mice. It is well known that obese mice fed by HFD have decreased intestinal *Bacteroides* abundance and *Firmicutes* abundance increased (32, 33). However, the ratio of *Firmicutes* to *Bacteroides*

returned to normal levels after intragastric treatment with *L. plantarum*. In addition, we found that the gavage treatment of *L. plantarum* also reduced the expression of *Clostridia* in the HFD group. The high abundance of *Clostridia* can metabolize and produce excess fecal deoxycholic acid (DCA) (34). This ecological disorder further reduces the uncoupling of bile acids (35). DCA can stimulate the expression of S1PR2, regulate the protein kinase (ERK) signal pathway, and induce the activation

of NLRP3 inflammasomes (36), which is one of the causes of chronic inflammation caused by obesity. This also verified that the gavage treatment of *L. plantarum* can significantly reduce the expression of pro-inflammatory factors in colon tissue. Surprisingly, the gavage of *L. plantarum* significantly improved the expression of *Bifidobacteriales*, and previous studies also showed that it can alleviate obesity (37, 38). *Bifidobacterium* strains can bind to mucin, stimulate the production of colonic mucus, and interact with the intestinal probiotic flora (39). The increased abundance of *bifidobacteria* also prevents the physiological damage of colon mucus and enhances the host body's metabolism (40).

DATA AVAILABILITY STATEMENT

The datasets presented in this study can be found in online repositories. The names of the repository/repositories and accession number(s) can be found below: <https://www.ncbi.nlm.nih.gov/>, PRJNA832208.

ETHICS STATEMENT

The animal study was reviewed and approved by the Hunan Agricultural University's Animal Ethics Committee.

REFERENCES

- O'Neill S, O'Driscoll L. Metabolic syndrome: a closer look at the growing epidemic and its associated pathologies. *Obes Rev.* (2015) 16:1–12. doi: 10.1111/obr.12229
- Tong M, Saito T, Zhai P, Oka SI, Mizushima W, Nakamura M, et al. Mitophagy is essential for maintaining cardiac function during high fat diet-induced diabetic cardiomyopathy. *Circ Res.* (2019) 124:1360–71. doi: 10.1161/CIRCRESAHA.118.314607
- Hwang S, He Y, Xiang X, Seo W, Kim SJ, Ma J, et al. Interleukin-22 ameliorates neutrophil-driven nonalcoholic steatohepatitis through multiple targets. *Hepatology.* (2020) 72:412–29. doi: 10.1002/hep.31031
- Miyamoto J, Igarashi M, Watanabe K, Karaki SI, Mukouyama H, Kishino S, et al. Gut microbiota confers host resistance to obesity by metabolizing dietary polyunsaturated fatty acids. *Nat Commun.* (2019) 10:4007. doi: 10.1038/s41467-019-11978-0
- Dalby MJ, Ross AW, Walker AW, Morgan PJ. Dietary uncoupling of gut microbiota and energy harvesting from obesity and glucose tolerance in mice. *Cell Rep.* (2017) 21:1521–33. doi: 10.1016/j.celrep.2017.10.056
- Gomes AC, Hoffmann C, Mota JF. The human gut microbiota: Metabolism and perspective in obesity. *Gut Microbes.* (2018) 9:308–25. doi: 10.1080/19490976.2018.1465157
- Torres-Fuentes C, Schellekens H, Dinan TG, Cryan JF. The microbiota-gut-brain axis in obesity. *Lancet Gastroenterol Hepatol.* (2017) 2:747–56. doi: 10.1016/S2468-1253(17)30147-4
- Nøhr MK, Pedersen MH, Gille A, Egerod KL, Engelstoft MS, Husted AS, et al. GPR41/FFAR3 and GPR43/FFAR2 as cosensors for short-chain fatty acids in enteroendocrine cells vs FFAR3 in enteric neurons and FFAR2 in enteric leukocytes. *Endocrinology.* (2013) 154:3552–64. doi: 10.1210/en.2013-1142
- Sanders ME, Merenstein DJ, Reid G, Gibson GR, Rastall RA. Probiotics and prebiotics in intestinal health and disease: from biology to the clinic. *Nat Rev Gastroenterol Hepatol.* (2019) 16:605–16. doi: 10.1038/s41575-019-0173-3
- Seddik HA, Bendali F, Gancel F, Fliss I, Spano G, Drider D. *Lactobacillus plantarum* and its probiotic and food potentialities. *Probiotics Antimicrob Proteins.* (2017) 9:111–22. doi: 10.1007/s12602-017-9264-z

AUTHOR CONTRIBUTIONS

GL and JF guided and completed the whole experimental design and reviewed and revised the manuscript before submission. YF was involved in the data collection. XH was responsible for the arrangement of data and analyzing the data. YM participated in interpreting the results and wrote the initial draft with all authors providing critical feedback and edits to subsequent revisions. All authors contributed to the article and approved the submitted version.

FUNDING

This study was supported by National Natural Science Foundation of China (Nos. 31772642 and 31672457), Ministry of Agricultural of the People's Republic of China (2015-Z64, 2016-X47), Hunan Provincial Science and Technology Department (2021JJ30008, 2019TP2004, 2017NK2322, 2016WK2008, and 2016TP2005), Double First-class Construction project of Hunan Agricultural University (SYL201802003), China Postdoctoral Science Foundation (2018M632963 and 2019T120705), Postgraduate Scientific Research Innovation Project of Hunan Province (CX20210654), and Science and Technology Innovation and Entrepreneurship Project for University Students of Hunan Province (2021RC1004).

- Mao JH, Kim YM, Zhou YX, Hu D, Zhong C, Chang H, et al. Genetic and metabolic links between the murine microbiome and memory. *Microbiome.* (2020) 8:53. doi: 10.1186/s40168-020-00817-w
- Crakes KR, Santos Rocha C, Grishina I, Hirao LA, Napoli E, Gaulke CA, et al. PPAR α -targeted mitochondrial bioenergetics mediate repair of intestinal barriers at the host-microbe intersection during SIV infection. *Proc Natl Acad Sci USA.* (2019) 116:24819–29. doi: 10.1073/pnas.1908977116
- Heeney DD, Zhai Z, Bendiks Z, Barouei J, Martinic A, Slupsky C, et al. *Lactobacillus plantarum* bacteriocin is associated with intestinal and systemic improvements in diet-induced obese mice and maintains epithelial barrier integrity in vitro. *Gut Microbes.* (2019) 10:382–97. doi: 10.1080/19490976.2018.1534513
- Salomé-Desnoullez S, Poirer S, Foligné B, Muharram G, Peucelle V, Lafont F, et al. Persistence and dynamics of fluorescent *Lactobacillus plantarum* in the healthy versus inflamed gut. *Gut Microbes.* (2021) 13:1–16. doi: 10.1080/19490976.2021.1897374
- Schulze MB. Metabolic health in normal-weight and obese individuals. *Diabetologia.* (2019) 62:558–66. doi: 10.1007/s00125-018-4787-8
- Quigley EMM. Prebiotics and probiotics in digestive health. *Clin Gastroenterol Hepatol.* (2019) 17:333–44. doi: 10.1016/j.cgh.2018.09.028
- Saltiel AR, Kahn CR. Insulin signalling and the regulation of glucose and lipid metabolism. *Nature.* (2001) 414:799–806. doi: 10.1038/414799a
- Paranjape SA, Chan O, Zhu W, Horblitt AM, McNay EC, Cresswell JA, et al. Influence of insulin in the ventromedial hypothalamus on pancreatic glucagon secretion in vivo. *Diabetes.* (2010) 59:1521–7. doi: 10.2337/db10-0014
- Sui X, Wang K, Gluchowski NL, Elliott SD, Liao M, Walther TC, et al. Structure and catalytic mechanism of a human triacylglycerol-synthesis enzyme. *Nature.* (2020) 581:323–8. doi: 10.1038/s41586-020-2289-6
- Liu J, Gorski JN, Gold SJ, Chen D, Chen S, Forrest G, et al. Pharmacological inhibition of diacylglycerol acyltransferase 1 reduces body weight and modulates gut peptide release—potential insight into mechanism of action. *Obesity.* (2013) 21:1406–15. doi: 10.1002/oby.20193
- McLaren DG, Han S, Murphy BA, Wilsie L, Stout SJ, Zhou H, et al. DGAT2 Inhibition alters aspects of triglyceride metabolism in rodents but not in non-human primates. *Cell Metab.* (2018) 27:1236–48.e1236. doi: 10.1016/j.cmet.2018.04.004

22. Zhou B, Liu C, Xu L, Yuan Y, Zhao J, Zhao W, et al. N-Methyladenosine reader protein YT521-B homology domain-containing 2 suppresses liver steatosis by regulation of mRNA stability of lipogenic genes. *Hepatology*. (2021) 73:91–103. doi: 10.1002/hep.31220
23. Cheng X, Geng F, Pan M, Wu X, Zhong Y, Wang C, et al. Targeting DGAT1 ameliorates glioblastoma by increasing fat catabolism and oxidative stress. *Cell Metab*. (2020) 32:229–42.e228. doi: 10.1016/j.cmet.2020.06.002
24. Nakamura MT, Yudell BE, Loor JJ. Regulation of energy metabolism by long-chain fatty acids. *Prog Lipid Res*. (2014) 53:124–44. doi: 10.1016/j.plipres.2013.12.001
25. Schlaepfer IR, Joshi M. CPT1A-mediated fat oxidation, mechanisms, and therapeutic potential. *Endocrinology*. (2020) 161:bqz046. doi: 10.1210/endo/bqz046
26. Sonnenburg ED, Zheng H, Joglekar P, Higginbottom SK, Firkbank SJ, Bolam DN, et al. Specificity of polysaccharide use in intestinal bacteroides species determines diet-induced microbiota alterations. *Cell*. (2010) 141:1241–52. doi: 10.1016/j.cell.2010.05.005
27. Neyrinck AM, Possemiers S, Druart C, Van de Wiele T, De Backer F, Cani PD, et al. Prebiotic effects of wheat arabinoxylan related to the increase in bifidobacteria, Roseburia and Bacteroides/Prevotella in diet-induced obese mice. *PLoS ONE*. (2011) 6:e20944. doi: 10.1371/journal.pone.0020944
28. Daniele G, Guardado Mendoza R, Winnier D, Fiorentino TV, Pengou Z, Cornell J, et al. The inflammatory status score including IL-6, TNF- α , osteopontin, fractalkine, MCP-1 and adiponectin underlies whole-body insulin resistance and hyperglycemia in type 2 diabetes mellitus. *Acta Diabetol*. (2014) 51:123–31. doi: 10.1007/s00592-013-0543-1
29. Suzuki T, Yoshida S, Hara H. Physiological concentrations of short-chain fatty acids immediately suppress colonic epithelial permeability. *Br J Nutr*. (2008) 100:297–305. doi: 10.1017/S0007114508888733
30. Kahn BB, Alquier T, Carling D, Hardie DG. AMP-activated protein kinase: ancient energy gauge provides clues to modern understanding of metabolism. *Cell Metab*. (2005) 1:15–25. doi: 10.1016/j.cmet.2004.12.003
31. Saad MJ, Santos A, Prada PO. Linking gut microbiota and inflammation to obesity and insulin resistance. *Physiology*. (2016) 31:283–93. doi: 10.1152/physiol.00041.2015
32. Rastmanesh R. High polyphenol, low probiotic diet for weight loss because of intestinal microbiota interaction. *Chem Biol Interact*. (2011) 189:1–8. doi: 10.1016/j.cbi.2010.10.002
33. Chang CJ, Lin CS, Lu CC, Martel J, Ko YF, Ojcius DM, et al. Ganoderma lucidum reduces obesity in mice by modulating the composition of the gut microbiota. *Nat Commun*. (2015) 6:7489. doi: 10.1038/ncomms8489
34. Wang L, Gong Z, Zhang X, Zhu F, Liu Y, Jin C, et al. Gut microbial bile acid metabolite skews macrophage polarization and contributes to high-fat diet-induced colonic inflammation. *Gut Microbes*. (2020) 12:1–20. doi: 10.1080/19490976.2020.1819155
35. Xu M, Cen M, Shen Y, Zhu Y, Cheng F, Tang L, et al. Deoxycholic acid-induced gut dysbiosis disrupts bile acid enterohepatic circulation and promotes intestinal inflammation. *Dig Dis Sci*. (2021) 66:568–76. doi: 10.1007/s10620-020-06208-3
36. Zhao S, Gong Z, Du X, Tian C, Wang L, Zhou J, et al. Deoxycholic acid-mediated sphingosine-1-phosphate receptor 2 signaling exacerbates DSS-induced colitis through promoting cathepsin B release. *J Immunol Res*. (2018) 2018:2481418. doi: 10.1155/2018/2481418
37. Parnell JA, Reimer RA. Prebiotic fiber modulation of the gut microbiota improves risk factors for obesity and the metabolic syndrome. *Gut Microbes*. (2012) 3:29–34. doi: 10.4161/gmic.19246
38. Everard A, Belzer C, Geurts L, Ouwerkerk JP, Druart C, Bindels LB, et al. Cross-talk between Akkermansia muciniphila and intestinal epithelium controls diet-induced obesity. *Proc Natl Acad Sci USA*. (2013) 110:9066–71. doi: 10.1073/pnas.1219451110
39. He F, Ouwehan AC, Hashimoto H, Isolauri E, Benno Y, Salminen S. Adhesion of Bifidobacterium spp. to human intestinal mucus. *Microbiol Immunol*. (2001) 45:259–62. doi: 10.1111/j.1348-0421.2001.tb02615.x
40. Everard A, Lazarevic V, Derrien M, Girard M, Muccioli GG, Neyrinck AM, et al. Responses of gut microbiota and glucose and lipid metabolism to prebiotics in genetic obese and diet-induced leptin-resistant mice. *Diabetes*. (2011) 60:2775–86. doi: 10.2337/db11-0227

Conflict of Interest: The authors declare that the research was conducted in the absence of any commercial or financial relationships that could be construed as a potential conflict of interest.

Publisher's Note: All claims expressed in this article are solely those of the authors and do not necessarily represent those of their affiliated organizations, or those of the publisher, the editors and the reviewers. Any product that may be evaluated in this article, or claim that may be made by its manufacturer, is not guaranteed or endorsed by the publisher.

Copyright © 2022 Ma, Fei, Han, Liu and Fang. This is an open-access article distributed under the terms of the Creative Commons Attribution License (CC BY). The use, distribution or reproduction in other forums is permitted, provided the original author(s) and the copyright owner(s) are credited and that the original publication in this journal is cited, in accordance with accepted academic practice. No use, distribution or reproduction is permitted which does not comply with these terms.