



Effect of High Ratio of n-6/n-3 PUFAs on Depression: A Meta-Analysis of Prospective Studies

Yuanyuan Wang¹, Lirong Dong², Da Pan¹, Dengfeng Xu¹, Yifei Lu¹, Shiyu Yin¹, Shaokang Wang¹, Hui Xia¹, Wang Liao^{1,3} and Guiju Sun^{1,3*}

¹ Key Laboratory of Environmental Medicine and Engineering of Ministry of Education, Department of Nutrition and Food Hygiene, School of Public Health, Southeast University, Nanjing, China, ² Department of Integrated Service and Management, Jiangsu Provincial Center for Disease Control and Prevention, Nanjing, China, ³ China-DRI Expert Committee on Macronutrients, Beijing, China

OPEN ACCESS

Edited by:

Zheqing Zhang,
Southern Medical University, China

Reviewed by:

Fang Fang Zeng,
Jinan University, China
Guoxun Chen,
The University of Tennessee,
Knoxville, United States

*Correspondence:

Guiju Sun
gjsun@seu.edu.cn

Specialty section:

This article was submitted to
Nutritional Epidemiology,
a section of the journal
Frontiers in Nutrition

Received: 04 March 2022

Accepted: 25 April 2022

Published: 19 May 2022

Citation:

Wang Y-y, Dong L-r, Pan D,
Xu D-f, Lu Y-f, Yin S-y, Wang S-k,
Xia H, Liao W and Sun G (2022) Effect
of High Ratio of n-6/n-3 PUFAs on
Depression: A Meta-Analysis
of Prospective Studies.
Front. Nutr. 9:889576.
doi: 10.3389/fnut.2022.889576

Objective: The aim of this systematic review and meta-analysis was to examine the association between high ratio of n-6/n-3 polyunsaturated fatty acids (PUFAs) and depression.

Methods: The authors conducted a meta-analysis of research articles on the association of high ratio of n-6/n-3 PUFAs with the risk of depression published in the online article database on PubMed, Embase, Cochrane library as of December 2021. Pooled odds ratios (OR) were calculated using random effects models. Publication bias was assessed visually by funnel plots and statistically by the Egger's and Begg's tests.

Results: Finally, 12 studies included in this systematic review and meta-analysis with a total of 66,317 participants (including 4,173 individuals with depression condition). The pooled results showed that high ratio of n-6/n-3 PUFAs might be positively associated with depression [OR = 1.21, 95% confidence intervals (CIs): 1.04~1.41]. The I^2 test indicated that there was a substantial statistical heterogeneity across the included studies ($I^2 = 54.38\%$, $P = 0.01$). Subgroup analysis showed that high ratio of n-6/n-3 PUFAs in blood had no significant association with depression (OR = 1.15, 95%CI: 0.88~1.50), while high ratio of n-6/n-3 PUFAs in dietary supplements was positively associated with depression (OR = 1.32, 95%CI: 1.16~1.51).

Conclusion: This meta-analysis confirmed the association between high ratio of n-6/n-3 PUFAs and the risk of depression. High ratio of n-6/n-3 PUFAs in dietary supplementation was positively associated with depression, but had no significant association in the blood. This study suggested that lowering the dietary intake of the ratio of n-6/n-3 PUFAs would be beneficial in the prevention of depression.

Keywords: depression, n-3, n-6, polyunsaturated fatty acids, prospective study

INTRODUCTION

Depression is a common mental illness that involves a complex interplay of social, psychological and biological factors. A continuous and prolonged depressed mood is the main clinical feature (1). Depression can have a profound impact on all aspects of life with researches showing a strong link between depression and health, including tuberculosis and cardiovascular disease

(2, 3). In addition, it can disrupt sleep and appetite (4). Depression is reported to be the leading cause of disability worldwide and contributes significantly to the global burden of disease (5–7). According to the World Health Organization (WHO), an estimated 5% of adults worldwide suffer from depression (1). The prevalence of depression in the United States was between 5% and 10% and may be higher in some specific settings (8). Meanwhile, the latest results from the China Mental Health Survey indicated that the prevalence of depression in China was 3.6%, with women being more likely than men at all stages (9). Unfortunately, mental illnesses like depression are getting worse. One of the main reasons is the impact of the COVID-19 pandemic on the mental health of the global population (10, 11). How to prevent and treat depression has become a major area of research for researchers worldwide. Positive effects on depressive symptoms or depression through dietary changes have been demonstrated in many observational and clinical studies (12–15).

The n-3 polyunsaturated fatty acids (PUFAs) and n-6 PUFAs are important fatty acids required by the human body and mainly provided by dietary intake. They are named due to the presence of the first unsaturated bond in the third and sixth positions of the methyl end of the carbon chain, respectively. N-3 PUFAs mainly include alpha-linolenic acid (ALA), eicosapentaenoic acid (EPA) and docosahexaenoic acid (DHA), while n-6 PUFAs mainly include linoleic acid (LA) and arachidonic acid (AA). Recent articles have shown that n-3 PUFAs have myriad health benefits on cardiovascular disease, diabetes, cancer, depression and various mental disorders, age-related cognitive decline, periodontal disease and rheumatoid arthritis (16). Since n-3 and n-6 fatty acids can be converted to share the same family of enzymes, there is competitive metabolism between the n-3 and n-6 fatty acid families (17). Therefore, seeking the optimal balance of the ratio of n-6 to n-3 PUFAs seems to have more health benefits. However, the results of the effects of different ratios of n-6/n-3 PUFAs on depression are inconsistent. Some studies showed that high ratio of n-6/n-3 PUFAs was not associated with depression. A French study on the association between n-3 PUFAs and depression found that n-6/n-3 ratio was not associated with depression, either from cross-sectional data or from cohort data (18). However, there are studies that hold the opposite opinion. An article prospectively examining depression in 54,632 US women from the Nurses' Health Study found that the risk of depression decreased as the n-3/n-6 ratio increased, while intake of long-chain n-3 fatty acids from fish was not associated with risk of depression (19). They suggested that it was the n-6/n-3 ratio rather than n-3 fatty acids alone that played a role in depression (19, 20). Besides, in a meta-analysis, a higher ratio of n-6/n-3 PUFAs was positively associated with depression (21). However, this meta-analysis only focused on the gestational population and the results could not be extrapolated to the whole population, which would affect the overall prevention and treatment policy of depression. Therefore, examining the relationship between the ratio of n-6/n-3 PUFAs and depression in the whole population has become the focus of this study, which can provide a scientific basis for the primary and secondary prevention of depression.

MATERIALS AND METHODS

Search Strategy

We conducted a systematic search on the databases such as PubMed, Embase, and Cochrane library up to December 2021. We used the following key words for the literature search: (“depression” or “depressive symptoms” or “depressive symptom” or “symptom, depressive” or “symptoms, depressive” or “emotional depression” or “depression, emotional”) AND (“n-6: n-3 fatty acid ratio” or “n-6/n-3 PUFAs” or “n-3 PUFAs” or “omega-3 fatty acid” or “n-6 PUFAs” or “omega-6 fatty acid” or “ α -linolenic acid” or “DHA” or “EPA” or “arachidonic acid” or “linoleic acid” or “fish oil” or “fish”). All indexed studies were retrieved and the reference list of identified publications was reviewed for other relevant studies.

Eligibility Criteria

The criteria of the inclusion in this study were as follows: (1) this study was limited to English-language publications; (2) studies included only prospective cohort studies; (3) human studies; (4) participants had a clear ratio of n-6/n-3 PUFAs by dietary supplementation or biochemical testing for fatty acids; (5) only original studies were included in this study while those studies that were non-original studies (reviews, editorials or commentaries), abstracts, unpublished studies and duplicate studies were excluded.

Data Extraction

In this study, dietary intake and blood levels of n-3 and n-6 PUFAs were considered the primary exposures, and risk of depression was considered the primary outcome. Adjusted effect sizes were extracted where available. Only total n-3 and n-6 PUFAs content was chosen to be calculated in this study. Risk estimates (ORs or HRs or RRs) were pooled prior to data analysis.

In addition, the following characteristics of eligible articles were extracted: name of first author, date of publication, source of study, numbers of participants completing the study, length of cohort study, type of exposure (dietary intake, blood fatty acids), outcome of interest (depressive status), reported risk assessment related to depression [including ORs, RRs, HRs and their 95% confidence intervals (95% CIs)]. Each step was assessed by two independent investigators. In the event of inconsistent results, the final decision was made primarily by the investigators.

Quality Assessment of Studies

The Newcastle-Ottawa Scale (NOS) was used to determine the quality of included articles. According to the STAR scoring system, each prospective study is awarded a maximum of nine points based on criteria in three domains: selection (maximum 4 points), comparability (maximum 2 points) and assessment of results (maximum 3 points). According to the NOS, one to three stars indicate low quality, four to six stars indicate moderate quality and seven to nine stars indicate high quality. Quality was assessed independently by the two authors and any disagreements were resolved through discussion.

Statistical Analysis

In this meta-analysis of prospective cohort studies, log ORs and standard errors (SEs) were calculated using ORs, RRs and HRs and their 95% CIs. At first, a fixed-effects model was used to drive the overall effect sizes. If there was significant between-studies heterogeneity, the random-effects model (DerSimonian–Laird) was applied as an alternative. Cochrane Q test and I^2 were used to measure potential sources of heterogeneity across studies. In this study, $I^2 > 50$ was used as an indicator of heterogeneity among studies. Subgroup analyses were performed using random effects models for the following criteria: source of n-3 and n-6 PUFAs (food intake or blood), quality assessment score ($> 6 / \leq 6$) and covariates such as gender, BMI, energy, smoking, alcohol consumption.

Sensitivity analysis was performed to elucidate the stability of findings and to ascertain whether the final pooled effect sizes were affected by a single or several publications. In addition, plausible publication bias was specified visually by funnel plot and confirmed by the statistical evidence of Egger's test. Data analyses were performed on Stata version 16.0 (Stata Corp., College Station, TX). P values of two sides were considered significant at the level of <0.05 .

RESULTS

Literature Search

We identified 5,739 articles from the original search by keywords. Of these, 1,951 articles were excluded because they were duplicates. Then, 3,644 articles were excluded because there was no relevant study design (non-prospective cohort study) or non-human studies. 144 articles were left for full-text examination. Through checking the full-text, twelve eligible papers with 66,317 participants (including 4,173 individuals with depression condition) were included in the current meta-analysis. The process of the literature search is presented in **Figure 1**.

Study Characteristics

Twelve prospective studies were finally selected for inclusion in the current systematic review. Characteristics of each study are provided in **Table 1**. Publication date varied between 2006 and 2021. Four of the included studies were conducted in Europe (18, 22–24), four in Asia (25–28), and four in America (19, 20, 29, 30). Six studies were conducted on women, one study was conducted on men, while five studies included both genders. None of the studies considered the gender-specific association between n-6/n-3 and the risk of depression. Six of the included

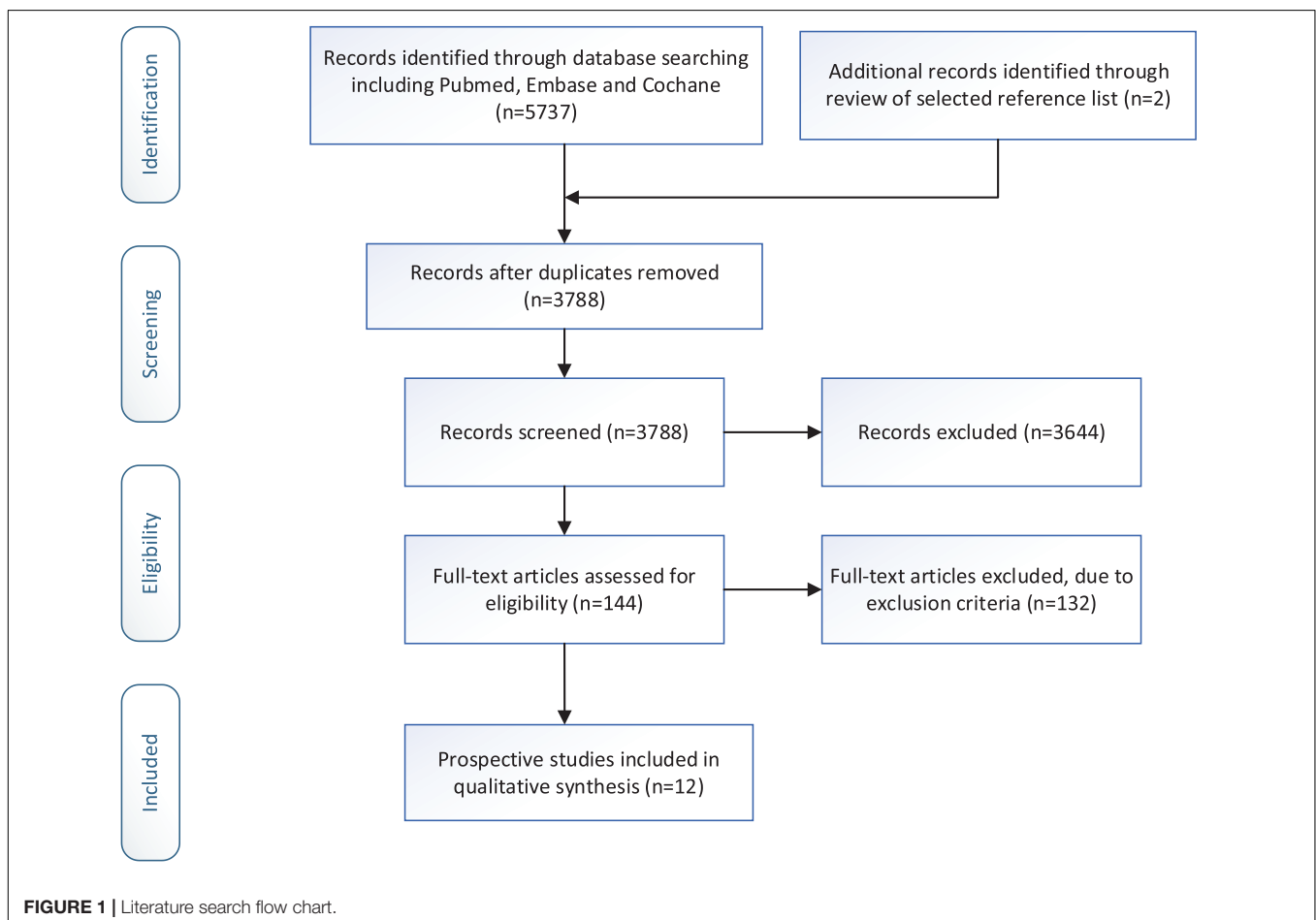


TABLE 1 | Characteristics of the included studies.

Study source	Population	Follow-up duration (years)	Participants/case	Exposure measurement	Odds ratio (95%CI)
Miyake, et al. (25)	The Osaka Maternal and Child Health Study in Japan	2–9 months postpartum	865/121	Food intake n-6: LA, AA n-3: ALA, EPA, DHA	1.03 (0.6~1.82)
Lucas, et al. (19)	Women from the Nurses' Health Study in United States	10	54632/2823	Food intake n-6: LA, AA n-3: ALA, EPA, DHA	1.35 (1.11~1.64)
Ruusunen, et al. (22)	Kuopio Ischaemic Heart Disease Risk Factor (KIHD) Study cohort in Finland	18	2077/46	Blood n-6: LA, AA n-3: ALA, EPA, DHA, DPA	0.97 (0.49~2.00)
Kesse-Guyot, et al. (18)	Participants from the Supplementation with Antioxidant Vitamins and Minerals (SU.VI.MAX) Study in France	10.8	1235/140	Food intake n-6: LA, AA n-3: ALA, EPA, DPA, DHA	0.98 (0.58~1.65)
da Rocha and Kac (20)	A prospective observational cohort of pregnant women in Brazil	at least 30 days post-partum	106/28	Food intake n-6: total n-6 PUFA n-3: total n-3 PUFA	2.50 (1.21~5.14)
Chong, et al. (26)	Mothers from the Growing Up in Singapore Toward healthy Outcomes (GUSTO) mother-offspring cohort study in Singapore	3 mothers postgratum	698/72	Blood n-6: AA n-3: DHA, EPA, DPA	0.70 (0.09~5.14)
Matsuoka, et al. (28)	Participants from Japan Public Health Center-based Prospective Study (JPHC Study)	10	1181/99	Food intake n-6: LA, AA n-3: ALA, EPA, DHA, DPA	1.16 (0.64~2.08)
Pinto, et al. (23)	Pregnant women from a prospective observational cohort in Brazil	30–36 gestational weeks	138/24	Blood n-6: LA, γ linolenic acid, AA, eicosatrienoic acid, docosatetraenoic acid, docosapentaenoic acid n-3: ALA, EPA, DPA, DHA	1.40 (1.09~1.79)
Horikawa, et al. (27)	Participants from the National Institute for Longevity Sciences-Longitudinal Study of Aging (NILS-LSA) in Japan	8.1	2335/515	Food intake n-6: AA, LA n-3: DHA, EPA, ALA	1.36 (1.10~1.69)
Hoge, et al. (29)	Pregnant women from a prospective observational cohort in Belgian	one year after delivery	71/17	Blood n-6: total n-6 PUFA n-3: total n-3 PUFA	2.31 (1.20~4.45)
Thesing et al. (24)	Participants from the Netherlands Study of Depression and Anxiety and the Depression Evaluation Longitudinal Therapy Assessment studies in Netherlands	8	474/165	Blood n-6: LA, γ linolenic acid, Eicosadienoic acid, Homogamma-Linolenic Acid, AA, Docosadienoic acid, Docosatetraenoic acid, Docosapentaenoic acid n-3: ALA, EPA, DPA, DHA	0.90 (0.76~1.06)
Mongan, et al. (30)	Participants from the Avon Longitudinal Study of Parents and Children (ALSPAC) in United Kingdom	7	2505/157	Blood n-6: total n-6 PUFA n-3: total n-3 PUFA	1.02 (0.79~1.32)

studies were conducted on dietary intake, while six of the included studies were conducted on blood biochemistry tests. The studies' sample size ranged from 71 to 54,632. In total, 66,317 individuals, with depression ($n = 4173$) were entered in the current systematic review.

The risk assessment of bias for each study through NOS was shown in **Table 2**. In terms of selection of populations, the exposed cohort in most studies were underrepresented and

only represented a certain group of people. Whereas the non-exposed population was from the same population as the exposed population. Besides, all studies were highly comparable between groups. As for outcome measures, most of the studies had strict outcome measures.

Ultimately, we found that four of the twelve included in this meta-analysis were of moderate quality and eight were of high quality.

TABLE 2 | Quality assessment of the included cohort studies.

Study design	Selection (☆☆☆☆)	Comparability (☆☆)	Exposure or Outcome (☆☆)	Stars	Quality scores
Cohort studies	1) Representativeness of the exposed cohort? ☆	1) Study controls for the most important factor? ☆	1) How to ascertain outcome? ☆	☆☆☆☆☆ ☆☆☆☆☆ (9)	High quality: 8–9 stars, Moderate quality: 6–7 stars.
	2) Selection of the non-exposed cohort? ☆	2) Study controls for any additional factors? ☆	a) Independent blindness		
	3) Evaluating exposure? ☆		b) Record linkage		
	4) Outcomes of interest were not present at study start? ☆		2) Follow-up till outcomes happened? ☆		
			3) Adequacy of follow up? ☆		
Included cohort studies					
Miyake, et al. (25)	1) × : female cohort, 2) ☆, 3) ×, 4) ☆	1) ☆, 2) ☆	1) ×, 2) ☆, 3) ☆	☆☆☆☆☆☆	Moderate
Lucas, et al. (19)	1) × : female cohort, 2) ☆, 3) ☆, 4) ☆	1) ☆, 2) ☆	1) ☆, 2) ☆, 3) ☆	☆☆☆☆☆ ☆☆☆☆	High
Ruusunen, et al. (22)	1) × : male cohort; 2) ☆, 3) ☆, 4) ☆	1) ☆; 2) ☆	1) ☆, 2) ☆, 3) ☆	☆☆☆☆☆ ☆☆☆☆	High
Kesse-Guyot, et al. (18)	1) ☆, 2) ☆, 3) ×, 4) × : no statement	1) ☆; 2) ☆	1) ×, 2) ☆, 3) ☆	☆☆☆☆☆☆	Moderate
da Rocha and Kac (20)	1) × : female cohort, 2) ☆, 3) ☆, 4) × : no statement	1) ☆; 2) ☆	1) ×, 2) ☆, 3) ☆	☆☆☆☆☆☆	Moderate
Chong, et al. (26)	1) × : female cohort, 2) ☆, 3) ☆, 4) ☆	1) ☆, 2) ☆	1) ×, 2) ☆, 3) ☆	☆☆☆☆☆ ☆☆	High
Matsuoka, et al. (28)	1) ☆, 2) ☆, 3) ☆, 4) × : no statement	1) ☆, 2) ☆	1) ☆, 2) ☆, 3) ☆	☆☆☆☆☆ ☆☆☆☆	High
Pinto, et al. (23)	1) × : female cohort, 2) ☆, 3) ☆, 4) ☆	1) ☆, 2) ☆	1) ☆, 2) ☆, 3) ☆	☆☆☆☆☆ ☆☆☆☆	High
Horikawa et al. (27)	1) ☆, 2) ☆, 3) ☆, 4) ☆	1) ☆, 2) ☆	1) ×, 2) ☆, 3) ☆	☆☆☆☆☆ ☆☆☆☆	High
Hoge et al. (29)	1) × : female cohort, 2) ☆, 3) ☆, 4) × : no statement	1) ☆, 2) ☆	1) ×, 2) ☆, 3) ☆	☆☆☆☆☆☆	Moderate
Thesing et al. (24)	1) ☆, 2) ☆, 3) ☆, 4) ☆	1) ☆, 2) ☆	1) ×, 2) ☆, 3) ☆	☆☆☆☆☆ ☆☆☆☆	High
Mongan et al. (30)	1) ☆, 2) ☆, 3) ☆, 4) ☆	1) ☆, 2) ☆	1) ×, 2) ☆, 3) ☆	☆☆☆☆☆ ☆☆☆☆	High

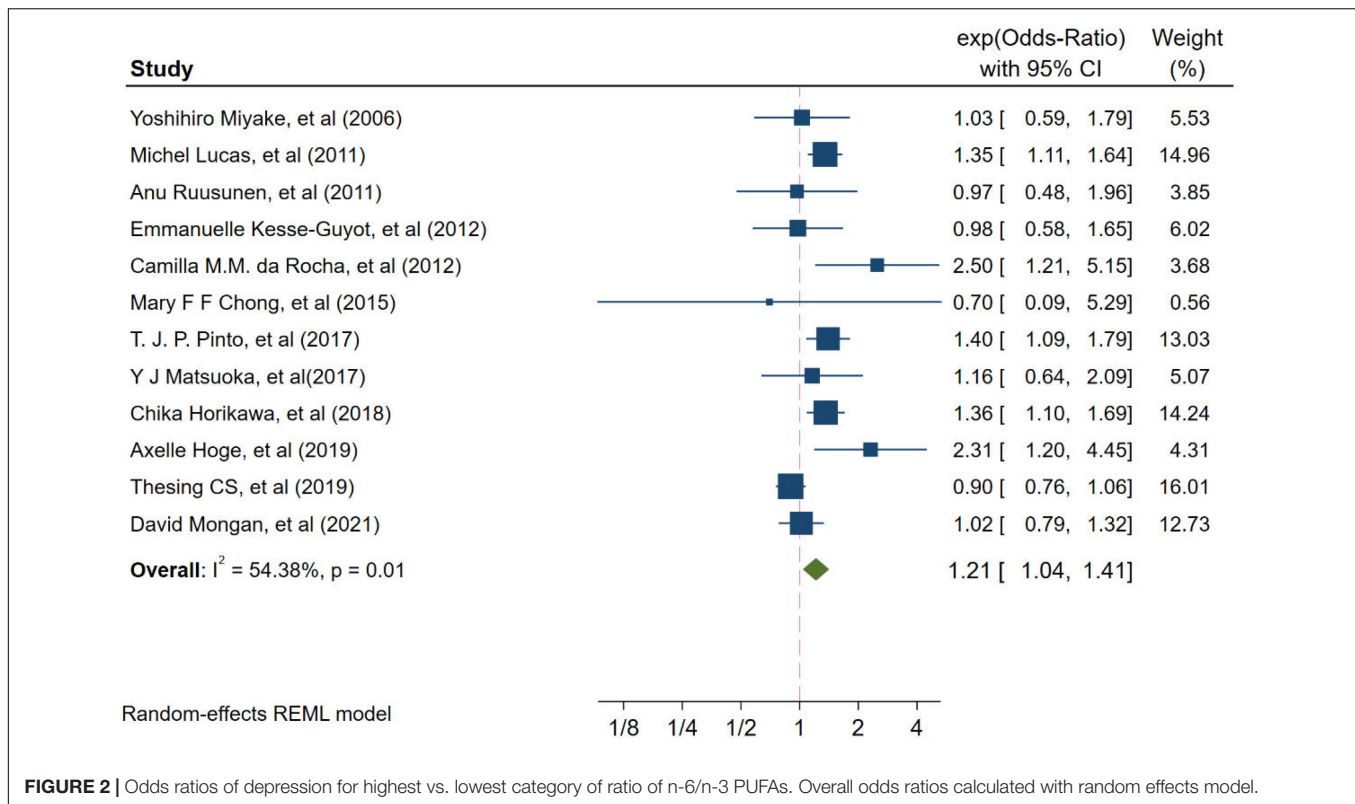
Effect of High Ratio of n-6/n-3 PUFAs on Depression

Twelve studies from independent cohorts reported an association between high ratio of n-6/n-3 PUFAs and risk of depression, with 66,317 participants and 4,173 depression events. The forest plot of depression is shown in **Figure 2**. The pooled results from the forest plot showing in **Figure 2**, demonstrated that high ratio of n-6/n-3 PUFAs was positively associated with depression (OR = 1.21, 95%CI: 1.04~1.41). The I^2 test indicated that there was a substantial statistical heterogeneity across the included trials ($I^2 = 54.38\%$, $P = 0.01$). Moreover, as shown in **Figure 3**, six studies, which detected n-3 and n-6 PUFAs in blood, indicated that high ratio of n-6/n-3 PUFAs had no significant association with depression (OR = 1.15, 95%CI: 0.88~1.50), with a substantial statistical heterogeneity across the included trials ($I^2 = 67.30\%$, $P = 0.01$). However, six studies conducting on dietary intake showed that high ratio of n-6/n-3 PUFAs was positively associated with depression (OR = 1.32, 95%CI: 1.16~1.51), with a non-significant heterogeneity between studies ($I^2 = 0.00\%$, $P = 0.38$).

Sensitivity Analysis and Subgroup Analysis

Sensitivity analysis showed that the effect of high ratio of n-6/n-3 PUFAs on depression was not changed by removing any one of the studies at a time. When studies with one or more high risks of bias were excluded, the overall effect size was not significantly changed for depression.

To more precisely identify the relationship between high ratio of n-6/n-3 PUFAs and depression, we performed further substantification analysis of the screened studies (shown in **Table 3**). We found that in America and Asia, the high ratio of n-6/n-3 PUFAs showed a significantly increasing effect on depression (OR = 1.44, 95%CI: 1.24~1.67; OR = 1.29, 95%CI: 1.07~1.56, respectively), with a substantial statistical heterogeneity across the included trials ($I^2 = 0.00\%$, $P = 0.19$; $I^2 = 0.00\%$, $P = 0.72$, respectively). However, in European countries, the high ratio of n-6/n-3 PUFAs had no significant effect on depression (OR = 0.94, 95%CI: 0.82~1.07). The significant positive association with high ratio of n-6/n-3 PUFAs and the risk of depression was observed in pregnant women



(OR = 1.53, 95CI%: 1.10~2.13, $I^2 = 36.46\%$, $P = 0.19$), while it was not significant for high ratio of n-6/n-3 PUFAs among studies in healthy people (OR = 1.12, 95CI%: 0.94~1.32). Additionally, high ratio of n-6/n-3 PUFAs was associated with depression in studies that adjusted for BMI. Besides, the significant positive association was observed in unadjusted model with education, smoke and drink compared with those studies with such adjustment, while there was no significant relationship between high ratio of n-6/n-3 PUFAs and depression in both unadjusted and adjusted model with energy and education.

Publication Bias

There was no significant evidence of publication bias as indicated by the results from Begg's test and Egger's test for the relationship between high ratio of n-6/n-3 PUFAs and depression ($P_{\text{Begg}} = 0.451$, $P_{\text{Egger}} = 0.581$).

DISCUSSION

A growing number of researchers recommend that the intake of n-6 PUFAs should be considered alongside n-3 PUFAs (31–33). The current conflicting findings on the relationship between high ratio of n-6/n-3 PUFAs and depression is not conducive to the development of strategies related to the treatment of depression. Therefore, the aim of this meta-analysis was to examine the relationship between high ratio of n-6/n-3 PUFAs and depression in the whole population.

In the final twelve cohort studies included, we concluded that a high ratio of n-6/n-3 PUFAs was indeed positively associated with depression. A study in Japan examining the relationship between n-3 unsaturated fatty acids and the tendency to depression in healthy people showed that 22.1% of people suffered from depressive conditions over an average follow-up of 8.1 years, and that high proportions of n-6/n-3 increased the risk of developing depressive symptoms (27). The results of the maternal population study also showed that a higher ratio of n-6/n-3 PUFAs was associated with a higher risk of depressive symptoms in the first year after delivery (29). Several potential mechanisms have been proposed regarding the association between high ratio of n-6/n-3 PUFAs, one of which is the inflammatory response (34). Depression has been associated with activation of the inflammatory response with this association being bidirectional (35, 36). For some depressed patients, inflammation promotes the onset of depression; meanwhile depression stimulates a greater cytokine response to stress (37). Therefore, depression can be alleviated by decreasing the inflammatory response. EPA and DHA are often considered to have anti-inflammatory effects and may promote the reduction of inflammation. Studies have shown that the anti-inflammatory effects of EPA and DHA were enhanced when the intake of AA was reduced. It indicates that the ratio of n-6/n-3 PUFAs seems to be more sensitive to the inflammatory response and thus to depression (38). A randomized controlled trial revealed that an increased ratio of n-6/n-3 PUFAs was associated with major depression and increased production of pro-inflammatory cytokines in students. This study found that lowering the n-6/n-3 PUFAs ratio resulted

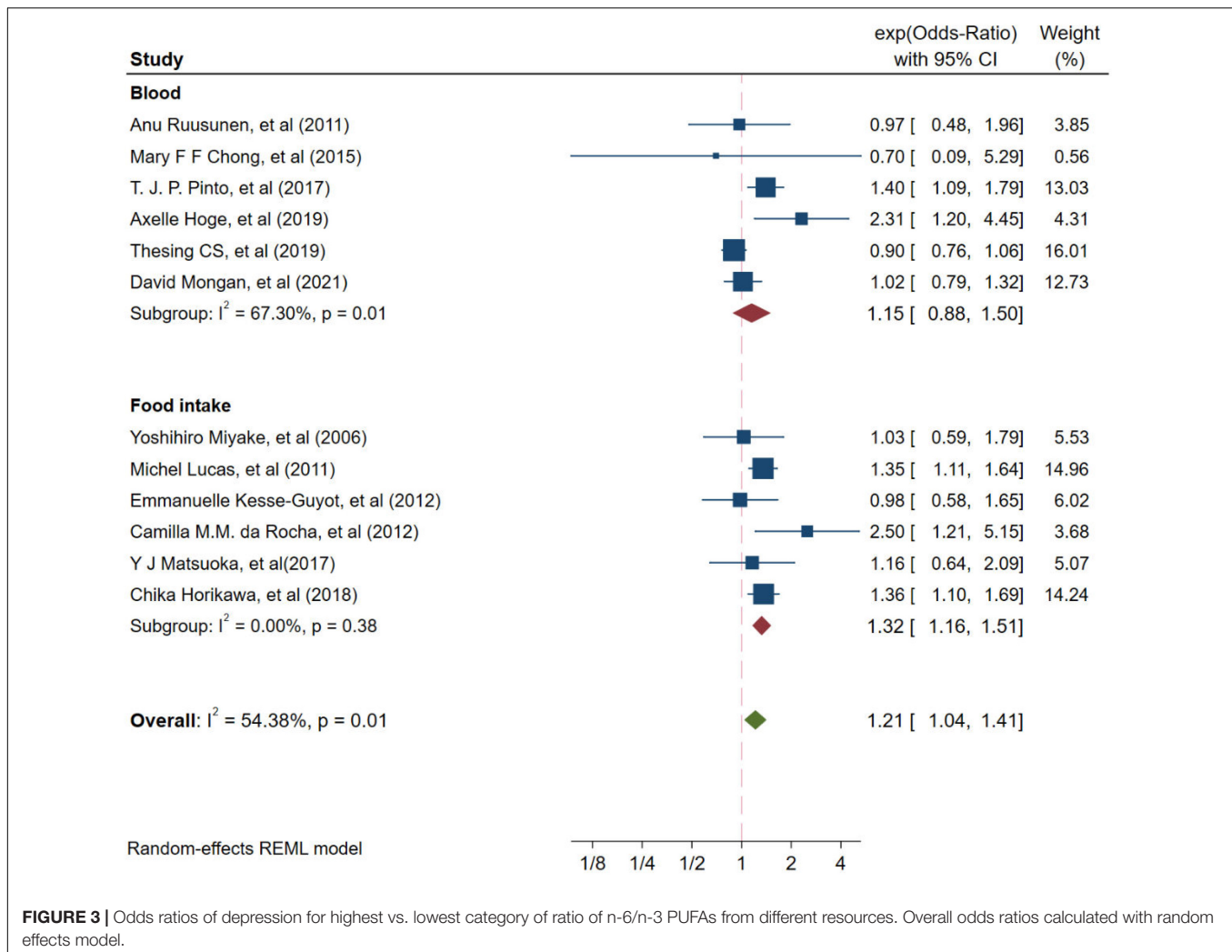


FIGURE 3 | Odds ratios of depression for highest vs. lowest category of ratio of n-6/n-3 PUFAs from different resources. Overall odds ratios calculated with random effects model.

in lower anxiety and stimulated reductions in IL-6 and tumor necrosis factor alpha (TNF- α) production, as well as small differences in serum TNF- α (39). However, the interactions regarding n-3 and n-6 fatty acids in the context of inflammation are complex and still need to be justified by a large number of studies. From the public health point of view, lowering the n-6/n-3 PUFAs ratio in the diet and maintaining the dynamic interactions between n-3 and n-6 PUFAs (PUFAs balance), which according to some studies are certainly better indicators of health effects than individual PUFA concentrations, are both relevant for depression prevention (40).

In subgroup analyses, we found that low ratio of dietary-derived n-6/n-3 PUFAs supplementation significantly reduced depression. In a cross-sectional study from Japan, a significant negative association was found between the low ratio of n-3/n-6 PUFAs in the dietary intake of overweight and obese women and depressive symptoms (41). Similar results were found in depression during pregnancy. A study showed that pregnant women with higher than recommended dietary intakes of total fatty acids and high ratio of n-6/n-3 were at higher risk of developing depressive symptoms (42). However, low ratio of

blood-derived n-6/n-3 PUFAs in our study did not significantly reduce depression. Some studies have shown that a higher n-6/n-3 PUFAs ratio in the blood was positively associated with depression (21, 43–45). Depression and the n-6/n-3 PUFAs ratio acted together to enhance pro-inflammatory cytokines beyond the contribution provided by either variable alone, and as depressive symptoms increased, higher ratio of n-6/n-3 PUFAs was associated with progressively higher levels of TNF- α and IL-6 (44). The potential reason for this was that the small sample size of ratio of n-6/n-3 PUFAs derived from blood produced higher heterogeneity. Besides, we should consider that dietary intake of PUFAs may not fully reflect the amount of fatty acids in the blood. A prospective study showed that PUFAs determined at baseline in red blood cells and in the diet were differentially associated with cognitive function and cognitive impairment (46). A study from the United States also noted that both plasma EPA and DHA concentrations were significantly predicted by dietary intake of these fatty acids. However, plasma docosapentaenoic acid (DPA) levels were not related to dietary intake of DPA (47). Therefore, our next study sought to explore the relationship between the ratio of n-6/n-3 PUFAs in the diet and blood, clarify

TABLE 3 | Subgroup analyses of high ratios of n-6/n-3 PUFAs and risk of depression (highest vs. lowest category).

Subgroup	No. of studies	Odds risk (95% CI)	I ² %	P value
Regions:				
America	4	1.44 (1.24~1.67)	0.00	0.19
Asia	3	1.29 (1.07~1.56)	0.00	0.72
Europe	4	0.94 (0.82~1.07)	0.00	0.88
Population:				
Pregnant women	5	1.53 (1.10~2.13)	36.46	0.19
Healthy people	6	1.12 (0.94~1.32)	56.53	0.03
Covariate method:				
Adjustment for age	8	1.15 (0.99~1.33)	53.18	0.03
No adjustment for age	3	2.24 (1.40~3.59)	0.00	0.50
Adjustment for BMI	7	1.20 (1.02~1.40)	22.39	0.45
No adjustment for BMI	4	1.39 (0.96~2.01)	82.56	0.00
Adjustment for energy	2	1.26 (0.97~1.65)	22.58	0.26
No adjustment for energy	9	1.22 (1.01~1.47)	59.93	0.01
Adjustment for education	4	1.07 (0.84~1.36)	61.91	0.03
No adjustment for education	7	1.32 (1.11~1.57)	32.47	0.13
Adjustment for smoking	7	1.11 (0.95~1.30)	51.46	0.05
No adjustment for smoking	4	1.72 (1.18~2.52)	34.37	0.23
Adjustment for drinking	4	1.07 (0.86~1.35)	53.31	0.06
No adjustment for drinking	7	1.33 (1.10~1.63)	43.59	0.09
Risk expression				
Hazard/rate ratio	2	1.10 (0.73~1.65)	88.73	0.00
Odds ratio	7	1.27 (1.02~1.58)	38.82	0.11
Relative risk	2	1.32 (1.09~1.59)	0.00	0.37
Quality assessment				
High	6	1.17 (0.99~1.37)	58.12	0.02
Moderate	5	1.49 (0.91~2.43)	61.58	0.05

the underlying mechanisms of this relationship, and figure out the relationship between the ratio of n-6/n-3 PUFAs in the diet and blood and depression.

STRENGTHS AND LIMITATIONS

Current research findings on the relationship between high ratio of n-6/n-3 PUFAs and depression is conflicting, which will influence the formulation of policies related to the prevention and treatment of depression. To our knowledge, this is the first study that focuses on the relationship between high ratio of n-6/n-3 PUFAs and depression. This study included a high-quality grade of cohort studies from a variety of countries, so there is a high degree of confidence in the pooled results. In addition, we conducted a series of subgroup and meta-regression analyses to explore sources of heterogeneity and thus improve the accuracy of the results for the studies of interest. The robustness of our results was supported by sensitivity analyses. There was no significant publication bias in our study through the use of the Begg's test and the Egger's test.

However, there are some limitations in the meta-analysis. Firstly, different assessment methods were used in the included studies, mainly derived from fatty acids in dietary intake and blood, but this was resolved by subgroup analysis. Secondly, language bias may have arisen as we excluded articles that were not in English. However, we selected articles covering

most of non-English speaking Europe and Asia, with a limited number of cohort studies from other countries. Finally, n-3 and n-6 unsaturated fatty acids were also calculated differently in different studies; for example, some studies included EPA and DHA content as total n-3 unsaturated fatty acid content, which undoubtedly biased the results. Therefore, future studies should be more standardized in their calculation of fatty acids, and it is hoped that large, high-quality, long-term randomized controlled trials will also be conducted to provide more reliable clinical evidence.

CONCLUSION

This study had significant public health implications. Our meta-analysis found a positive association between high ratio of n-6/n-3 PUFAs and depression and this positive association was only present in high ratio of n-6/n-3 PUFAs in dietary supplementation but not in blood. This study suggests that lowering the dietary intake of the ratio of n-6/n-3 PUFAs would be beneficial in the prevention of depression.

DATA AVAILABILITY STATEMENT

The original contributions presented in the study are included in the article/**Supplementary Material**, further inquiries can be directed to the corresponding author/s.

AUTHOR CONTRIBUTIONS

YW designed the study and wrote the manuscript. YW and LD searched and reviewed the relevant trials and collected the data. DP and DX played a role as a consultant. YL and SY helped employ search strategies. HX and WL performed statistical analysis. SW was responsible for the quality assessments for the studies. GS was the corresponding author. All authors contributed to the article and approved the submitted version.

FUNDING

This research was funded by the National Natural Science Foundation of China (No. 81872618) and CNS Research Fund for DRI.

ACKNOWLEDGMENTS

The authors thank all participants, researchers and collaborators included in this meta-analysis.

SUPPLEMENTARY MATERIAL

The Supplementary Material for this article can be found online at: <https://www.frontiersin.org/articles/10.3389/fnut.2022.889576/full#supplementary-material>

REFERENCES

- World Health Organization. (2022). Available online at: https://www.who.int/health-topics/depression#tab=tab_1 (accessed February 10, 2022).
- Meng R, Yu C, Liu N, He M, Lv J, Guo Y, et al. Association of depression with all-cause and cardiovascular disease mortality among adults in China. *JAMA Netw Open*. (2020) 3:e1921043. doi: 10.1001/jamanetworkopen.2019.21043
- Zhang K, Wang X, Tu J, Rong H, Werz O, Chen X. The interplay between depression and tuberculosis. *J Leukoc Biol*. (2019) 106:749–57. doi: 10.1002/JLB.MR0119-023R
- Park LT, Zarate CA Jr. Depression in the primary care setting. *N Engl J Med*. (2019) 380:559–68. doi: 10.1056/NEJMc1712493
- Smith K. Mental health: a world of depression. *Nature*. (2014) 515:181. doi: 10.1038/515180a
- Breslow AS, Tran NM, Lu FQ, Alpert JE, Cook BL. Depression treatment expenditures for adults in the USA: a systematic review. *Curr Psychiatry Rep*. (2019) 21:105. doi: 10.1007/s11920-019-1083-3
- Gbd 2016 DALYs and Hale Collaborators. Global, regional, and national disability-adjusted life-years (DALYs) for 333 diseases and injuries and healthy life expectancy (HALE) for 195 countries and territories, 1990–2016: a systematic analysis for the global burden of disease study 2016. *Lancet*. (2017) 390:1260–344. doi: 10.1016/S0140-6736(17)32130-X
- McCarron RM, Shapiro B, Rawles J, Luo J. Depression. *Ann Intern Med*. (2021) 174:Itc65–80. doi: 10.7326/AITC202105180
- Lu J, Xu X, Huang Y, Li T, Ma C, Xu G, et al. Prevalence of depressive disorders and treatment in China: a cross-sectional epidemiological study. *Lancet Psychiatry*. (2021) 8:981–90. doi: 10.1016/S2215-0366(21)00251-0
- Taquet M, Holmes EA, Harrison PJ. Depression and anxiety disorders during the COVID-19 pandemic: knowns and unknowns. *Lancet*. (2021) 398:1665–6. doi: 10.1016/S0140-6736(21)02221-2
- Covid-19 Mental Disorders Collaborators. Global prevalence and burden of depressive and anxiety disorders in 204 countries and territories in 2020 due to the COVID-19 pandemic. *Lancet*. (2021) 398:1700–12. doi: 10.1016/S0140-6736(21)02143-7
- Ljungberg T, Bondza E, Lethin C. Evidence of the importance of dietary habits regarding depressive symptoms and depression. *Int J Environ Res Public Health*. (2020) 17:1616. doi: 10.3390/ijerph17051616
- Quirk SE, Williams LJ, O'Neil A, Pasco JA, Jacka FN, Housden S, et al. The association between diet quality, dietary patterns and depression in adults: a systematic review. *BMC Psychiatry*. (2013) 13:175. doi: 10.1186/1471-244X-13-175
- Lassale C, Batty GD, Baghdadli A, Jacka F, Sánchez-Villegas A, Kivimäki M, et al. Healthy dietary indices and risk of depressive outcomes: a systematic review and meta-analysis of observational studies. *Mol Psychiatry*. (2019) 24:965–86. doi: 10.1038/s41380-018-0237-8
- Parletta N, Zarnowiecki D, Cho J, Wilson A, Bogomolova S, Villani A, et al. A mediterranean-style dietary intervention supplemented with fish oil improves diet quality and mental health in people with depression: a randomized controlled trial (HELFI-MED). *Nutr Neurosci*. (2019) 22:474–87. doi: 10.1080/1028415X.2017.1411320
- Shahidi F, Ambigaipalan P. Omega-3 and their health benefits. *Annu Rev Food Sci Technol*. (2018) 9:345–81. doi: 10.1146/annurev-food-111317-095850
- Schmitz G, Ecker J. The opposing effects of n-3 and n-6 fatty acids. *Prog Lipid Res*. (2008) 47:147–55. doi: 10.1016/j.plipres.2007.12.004
- Kesse-Guyot E, Touvier M, Andreeva VA, Jeandel C, Ferry M, Hercberg S, et al. Cross-sectional but not longitudinal association between n-3 fatty acid intake and depressive symptoms: results from the SU.VI.MAX 2 study. *Am J Epidemiol*. (2012) 175:979–87. doi: 10.1093/aje/kwr472
- Lucas M, Mirzaei F, O'Reilly EJ, Pan A, Willett WC, Kawachi I, et al. Dietary intake of n-3 and n-6 fatty acids and the risk of clinical depression in women: a 10-y prospective follow-up study. *Am J Clin Nutr*. (2011) 93:1337–43. doi: 10.3945/ajcn.111.011817
- Da Rocha CM, Kac G. High dietary ratio of omega-6 to omega-3 polyunsaturated acids during pregnancy and prevalence of post-partum depression. *Matern Child Nutr*. (2012) 8:36–48. doi: 10.1111/j.1740-8709.2010.00256.x
- Lin PY, Chang CH, Chong MF, Chen H, Su KP. Polyunsaturated fatty acids in perinatal depression: a systematic review and meta-analysis. *Biol Psychiatry*. (2017) 82:560–9. doi: 10.1016/j.biopsych.2017.02.1182
- Ruusunen A, Virtanen JK, Lehto SM, Tolmunen T, Kauhanen J, Voutilainen S. Serum polyunsaturated fatty acids are not associated with the risk of severe depression in middle-aged Finnish men: Kuopio ischaemic heart disease risk factor (KIHFD) study. *Eur J Nutr*. (2011) 50:89–96. doi: 10.1007/s00394-010-0118-7
- Pinto TJ, Vilela AA, Farias DR, Lepsch J, Cunha GM, Vaz JS, et al. Serum n-3 polyunsaturated fatty acids are inversely associated with longitudinal changes in depressive symptoms during pregnancy. *Epidemiol Psychiatr Sci*. (2017) 26:157–68. doi: 10.1017/S204579601500116X
- Thesing CS, Lok A, Milaneschi Y, Assies J, Bockting CLH, Figueroa CA, et al. Fatty acids and recurrence of major depressive disorder: combined analysis of two Dutch clinical cohorts. *Acta Psychiatr Scand*. (2020) 141:362–73. doi: 10.1111/acps.13136
- Miyake Y, Sasaki S, Yokoyama T, Tanaka K, Ohya Y, Fukushima W, et al. Risk of postpartum depression in relation to dietary fish and fat intake in Japan: the Osaka maternal and child health study. *Psychol Med*. (2006) 36:1727–35. doi: 10.1017/S0033291706008701
- Chong MF, Ong YL, Calder PC, Colega M, Wong JX, Tan CS, et al. Long-chain polyunsaturated fatty acid status during pregnancy and maternal mental health in pregnancy and the postpartum period: results from the GUSTO study. *J Clin Psychiatry*. (2015) 76:e848–56. doi: 10.4088/JCP.14m09191
- Horikawa C, Otsuka R, Kato Y, Nishita Y, Tange C, Rogi T, et al. Longitudinal association between n-3 long-chain polyunsaturated fatty acid intake and depressive symptoms: a population-based cohort study in Japan. *Nutrients*. (2018) 10:1655. doi: 10.3390/nu10111655
- Matsuoka YJ, Sawada N, Mimura M, Shikimoto R, Nozaki S, Hamazaki K, et al. Dietary fish, n-3 polyunsaturated fatty acid consumption, and depression risk in Japan: a population-based prospective cohort study. *Transl Psychiatry*. (2017) 7:e1242. doi: 10.1038/tp.2017.206
- Hoge A, Tabar V, Donneau AF, Dardenne N, Degée S, Timmermans M, et al. Imbalance between omega-6 and Omega-3 polyunsaturated fatty acids in early pregnancy is predictive of postpartum depression in a belgian cohort. *Nutrients*. (2019) 11:876. doi: 10.3390/nu11040876
- Mongan D, Healy C, Jones HJ, Zammit S, Cannon M, Cotter DR. Plasma polyunsaturated fatty acids and mental disorders in adolescence and early adulthood: cross-sectional and longitudinal associations in a general population cohort. *Transl Psychiatry*. (2021) 11:321. doi: 10.1038/s41398-021-01425-4
- Lands B. Historical perspectives on the impact of n-3 and n-6 nutrients on health. *Prog Lipid Res*. (2014) 55:17–29. doi: 10.1016/j.plipres.2014.04.002
- Li N, Yue H, Jia M, Liu W, Qiu B, Hou H, et al. Effect of low-ratio n-6/n-3 PUFA on blood glucose: a meta-analysis. *Food Funct*. (2019) 10:4557–65. doi: 10.1039/c9fo00323a
- Wei Y, Meng Y, Li N, Wang Q, Chen L. The effects of low-ratio n-6/n-3 PUFA on biomarkers of inflammation: a systematic review and meta-analysis. *Food Funct*. (2021) 12:30–40. doi: 10.1039/d0fo01976c
- Husted KS, Bouzinova EV. The importance of n-6/n-3 fatty acids ratio in the major depressive disorder. *Medicina (Kaunas)*. (2016) 52:139–47. doi: 10.1016/j.medic.2016.05.003
- Berk M, Williams LJ, Jacka FN, O'Neil A, Pasco JA, Moylan S, et al. So depression is an inflammatory disease, but where does the inflammation come from? *BMC Med*. (2013) 11:200. doi: 10.1186/1741-7015-11-200
- Beurel E, Toups M, Nemeroff CB. The bidirectional relationship of depression and inflammation: double trouble. *Neuron*. (2020) 107:234–56. doi: 10.1016/j.neuron.2020.06.002
- Kiecolt-Glaser JK, Derry HM, Fagundes CP. Inflammation: depression fans the flames and feasts on the heat. *Am J Psychiatry*. (2015) 172:1075–91. doi: 10.1176/appi.ajp.2015.15020152
- Innes JK, Calder PC. Omega-6 fatty acids and inflammation. *Prostaglandins Leukot Essent Fatty Acids*. (2018) 132:41–8. doi: 10.1016/j.plefa.2018.03.004
- Kiecolt-Glaser JK, Belury MA, Andridge R, Malarkey WB, Glaser R. Omega-3 supplementation lowers inflammation and anxiety in medical students: a randomized controlled trial. *Brain Behav Immun*. (2011) 25:1725–34. doi: 10.1016/j.bbi.2011.07.229

40. Lands B, Bibus D, Stark KD. Dynamic interactions of n-3 and n-6 fatty acid nutrients. *Prostaglandins Leukot Essent Fatty Acids*. (2018) 136:15–21. doi: 10.1016/j.plefa.2017.01.012
41. Tsujiguchi H, Thi Thu Nguyen T, Goto D, Miyagi S, Kambayashi Y, Hara A, et al. Relationship between the intake of n-3 polyunsaturated fatty acids and depressive symptoms in elderly Japanese people: differences according to sex and weight status. *Nutrients*. (2019) 11:775. doi: 10.3390/nu11040775
42. Sousa TM, Santos LCD. Dietary fatty acids, omega-6/omega-3 ratio and cholesterol intake associated with depressive symptoms in low-risk pregnancy. *Nutr Neurosci*. (2022) 25:642–7. doi: 10.1080/1028415X.2020.1792618
43. Kiecolt-Glaser JK, Belury MA, Porter K, Beversdorf DQ, Lemeshow S, Glaser R. Depressive symptoms, omega-6:omega-3 fatty acids, and inflammation in older adults. *Psychosom Med*. (2007) 69:217–24. doi: 10.1097/PSY.0b013e3180313a45
44. Horikawa C, Otsuka R, Kato Y, Nishita Y, Tange C, Kakutani S, et al. Cross-sectional association between serum concentrations of n-3 long-chain PUFA and depressive symptoms: results in Japanese community dwellers. *Br J Nutr*. (2016) 115:672–80. doi: 10.1017/S0007114515004754
45. Mamalakis G, Jansen E, Cremers H, Kiriakakis M, Tsibinos G, Kafatos A. Depression and adipose and serum cholesteryl ester polyunsaturated fatty acids in the survivors of the seven countries study population of crete. *Eur J Clin Nutr*. (2006) 60:1016–23. doi: 10.1038/sj.ejcn.1602413
46. Bigornia SJ, Scott TM, Harris WS, Tucker KL. Prospective associations of erythrocyte composition and dietary intake of n-3 and n-6 PUFA with measures of cognitive function. *Nutrients*. (2018) 10:1253. doi: 10.3390/nu10091253
47. Richter CK, Bisselou KS, Nordgren TM, Smith L, Appiah AK, Hein N, et al. n-3 Docosapentaenoic acid intake and relationship with plasma long-chain n-3 fatty acid concentrations in the United States: NHANES 2003–2014. *Lipids*. (2019) 54:221–30. doi: 10.1002/lipd.12146

Conflict of Interest: The authors declare that the research was conducted in the absence of any commercial or financial relationships that could be construed as a potential conflict of interest.

Publisher's Note: All claims expressed in this article are solely those of the authors and do not necessarily represent those of their affiliated organizations, or those of the publisher, the editors and the reviewers. Any product that may be evaluated in this article, or claim that may be made by its manufacturer, is not guaranteed or endorsed by the publisher.

Copyright © 2022 Wang, Dong, Pan, Xu, Lu, Yin, Wang, Xia, Liao and Sun. This is an open-access article distributed under the terms of the Creative Commons Attribution License (CC BY). The use, distribution or reproduction in other forums is permitted, provided the original author(s) and the copyright owner(s) are credited and that the original publication in this journal is cited, in accordance with accepted academic practice. No use, distribution or reproduction is permitted which does not comply with these terms.