



# Protective Effects and Potential Mechanisms of Dietary Resveratrol Supplementation on the Spleen of Broilers Under Heat Stress

Tiantian Meng<sup>1</sup>, Juying Deng<sup>1</sup>, Dingfu Xiao<sup>1\*</sup>, Muhammed Adebayo Arowolo<sup>1</sup>, Chunming Liu<sup>1</sup>, Liang Chen<sup>2</sup>, Wei Deng<sup>2</sup>, Shaoping He<sup>3</sup> and Jianhua He<sup>1,2\*</sup>

<sup>1</sup> College of Animal Science and Technology, Hunan Agricultural University, Changsha, China, <sup>2</sup> Institute of Animal Husbandry and Aquaculture, Huaihua Academy of Agricultural Sciences, Huaihua, China, <sup>3</sup> College of Animal Science and Technology, China Agricultural University, Beijing, China

## OPEN ACCESS

### Edited by:

Willem Van Eden,  
Utrecht University, Netherlands

### Reviewed by:

Laura Ellestad,  
University of Georgia, United States  
Sarbjee Makkar,  
Washington University in St. Louis,  
United States

### \*Correspondence:

Dingfu Xiao  
xiaodingfu2001@163.com  
Jianhua He  
jianhuahy@hunau.net

### Specialty section:

This article was submitted to  
Nutritional Immunology,  
a section of the journal  
Frontiers in Nutrition

Received: 24 November 2021

Accepted: 31 January 2022

Published: 16 May 2022

### Citation:

Meng T, Deng J, Xiao D, Arowolo MA,  
Liu C, Chen L, Deng W, He S and  
He J (2022) Protective Effects and  
Potential Mechanisms of Dietary  
Resveratrol Supplementation on the  
Spleen of Broilers Under Heat Stress.  
Front. Nutr. 9:821272.  
doi: 10.3389/fnut.2022.821272

Resveratrol (RSV) is a natural polyphenolic compound with potent antioxidant and anti-inflammatory properties. This study aimed to investigate the protective effects of RSV supplementation on the inflammatory responses of broilers during heat stress. A total of 432 28-d-old white-feathered broilers (817 crossbred chicken) with an average weight of  $549 \pm 4$  g were randomly allotted to 4 equal groups (Half male and half female, 6 replicates/group, 18 chickens/replicate), including normal temperature (NT) group ( $24 \pm 2^\circ\text{C}$  for 24 h/d, basal diet), NT+RSV group ( $24 \pm 2^\circ\text{C}$  for 24 h/d, basal diet + RSV), heat stress (HT) group ( $37 \pm 2^\circ\text{C}$  for 8 h/d, basal diet), and HT+RSV group ( $37 \pm 2^\circ\text{C}$  for 8 h/d, basal diet + RSV). Serum samples were collected on d 7 and 14 of heat stress, and thymus, spleen, jejunum, and bursa of Fabricius samples were collected and analyzed on d14. RSV treatment decreased the feed conversion ratio, partially reversed the negative alternations in body weight, average daily gain, and average daily feed intake caused by heat stress. RSV treatment also decreased the elevated levels of corticosterone on d 14, adrenocorticotropic hormone, and triiodothyronine in serum on d 7 caused by heat stress, and significantly increased the villus height to crypt depth ratio in the jejunum on d 14. Dietary RSV also reduced heat stress-induced splenic pro-inflammatory cytokine concentrations. TUNEL assay showed that RSV significantly reduced heat stress-induced the number of apoptotic cells. Remarkably, RSV down-regulated some splenic related genes for apoptosis genes, including *BCL-2*, *Apaf-1*, and *MDM2* mRNA levels induced by heat stress. According to GO and KEGG enrichment analyses, the differential genes between HT and HT + RSV groups were mainly associated with immune system process, hematopoietic or lymphoid organ development, and toll-like receptor signaling pathway. The relative mRNA expression of *NF- $\kappa$ B*, heat shock protein 70 (*HSP70*), and *p38 MAPK* were markedly decreased by the combination of RSV and heat stress. These findings showed that RSV might reduce the splenic inflammatory response in heat-stressed white-feather broilers by inhibiting heat stress-induced activation of *NF-B*, *MAPK*, and *HSP70*, as well as inhibiting the activation of mitochondrial apoptotic pathways.

**Keywords:** resveratrol, heat stress, anti-inflammatory, apoptosis, broiler

## INTRODUCTION

Heat stress has detrimental impacts on the poultry industry particularly in tropical subtropical and arid regions (1). Broilers are one of the most heat-sensitive animals due to their special physiology (2–4). Exposure to high ambient temperature has a detrimental impact on biological defense mechanisms in birds, such as the immunological response, which is linked to spleen atrophy, leading to immune response dysfunction (5, 6).

As a phytoalexin polyphenolic compound (7), resveratrol (RSV) (3,4,5-trihydroxystilbene) exhibits multiple bioactivities, including anti-oxidative (8), anti-inflammatory (9, 10), and anti-aging (11) properties in animals. Our previous study has reported that RSV supplementation in heat stress-induced black-boned chickens improved growth performance and reduced oxidative stress by modulating the expression of heat shock genes in immune organs (12). RSV also alleviated heat-stressed impairment of the intestine by improving the barrier function (13).

Although RSV immunomodulatory actions are potentiated via nuclear factor kappa-B (NF- $\kappa$ B), mitogen-activated protein kinase (MAPK), and PI3K/AKT signaling pathways (6), a transcriptomic search for further molecular targets in the spleen of broilers remains to be fully elucidated. Therefore, this study proposed to evaluate the possible beneficial effects and potential mechanisms of RSV on growth performance, serum hormone concentration, the levels of splenic cytokines and apoptosis, splenic transcriptional response, and the immune signal pathway genes of heat-stressed white-feathered broilers.

## MATERIALS AND METHODS

### Animal Ethics

All experimental and sample collection procedures were carried out according to the Chinese guidelines for animal welfare and approved by the Institutional Animal Care and Use Committee of the Hunan Agricultural University (permit number: CACAHU 2020-0821).

### Birds, Diets, and Management

A total of 500 healthy 1-day-old white feather broilers (817 crossbred chicken) were used before this experiment. From d 1 to 21 of age, except for light, broilers were managed with commercial standard feeding and raising managements. The chickens were kept in a room with 24-h of light from d 1 to 3 of age, 22-h of light and 2-h darkness from d 4 to 5 of age, 20-h of light and 4-h darkness from d 6 to 7 of age, 18-h of light and 6-h darkness from d 8 to 9 of age, and 16-h of light (06:30–22:30 h) and 8-h darkness from d 10 to 42 of age. During the week of acclimatization (d 21–27), birds were supplied a basal diet and water. Afterward, 432 28-d-old white feather broilers (817 crossbred chicken, half male and half female) with an average weight of  $549 \pm 4$  g (individually weighed) were selected and randomly divided into 4 groups (6 replicates/group, 18 chickens/replicate). Nine birds were housed in a wire cage with 3 ladders (70 × 70 × 100 cm), 2 wire cages formed an experimental unit, randomly distributed in the shed. All broilers

**TABLE 1** | Composition and nutrient levels of the basal diets (air-dry basis, %).

Item	Amount	Nutrient and energy content <sup>b</sup>	
Ingredients		ME, kcal/kg	3,079.42
Corn	61.50	Crude protein	19.05
Soybean meal (46%)	28.00	Ca	0.90
Rice bran	3.00	Total phosphorus	0.42
Soybean oil	4.00	Available phosphorus	0.38
Dicalcium phosphate	1.00	Methionine	0.41
NaCl	0.20	Lysine	1.03
Sodium bicarbonate	0.18		
L-Lysine	0.10		
D-L-Methionine	0.12		
Choline	0.10		
Limestone	1.30		
Premix <sup>a</sup>	0.50		
Total	100.00		

<sup>a</sup>Supplied per kilogram of diet: 12,000 IU of vitamin A; 3,000 IU of vitamin D<sub>3</sub>; 26 IU of vitamin E; 2.2 mg of vitamin K<sub>3</sub>; 4 mg of vitamin B<sub>1</sub>; 10 mg of vitamin B<sub>2</sub>; 1.6 mg of vitamin B<sub>6</sub>; 15 mg of vitamin B<sub>12</sub>; 0.8 mg of D-biotin; 12.5 mg of D-Pantothenic acid; 1.2 mg of Folic acid; 32 mg of nicotinamide; 8 mg of Cu; 80 mg of Fe; 60 mg of Zn; 100 mg of Mn; 0.35 mg of I; 0.15 mg of Se. <sup>b</sup>Calculated values.

were allowed free access to water and feed (crumbled) throughout the experimental period.

The normal temperature (NT) and NT+RSV groups were housed in an environmentally controlled chamber at  $24 \pm 2^\circ\text{C}$  for 24 h/d and fed with the basal diet and basal diet with 500 mg/kg of RSV (NT + RSV), respectively. In the remaining 2 groups, broilers were subjected to cyclic heat stress in the control room at  $37 \pm 2^\circ\text{C}$  for 8 h/d (09:00–17:00 h) and followed by  $24 \pm 2^\circ\text{C}$  for 16 h/d. Air conditioning and electric heat lamps were used to raise the temperature, which raised to the specified temperature in 10 min, and cooled down in 10 min. The temperature range was maintained with a temperature controller, ventilation was used to cool down the environment at the end of each day's heat treatment and the relative humidity of the rearing environment was controlled at around 50–60%. The birds in HT and HT + RSV groups received the basal diet and the basal diet with 500 mg/kg of RSV, respectively. RSV (>98% purity) was provided by the National Research Center of Engineering Technology for Utilization Ingredients from Botanicals. The trial period lasted for 14 days, from d 28 to 42 of the age of the broilers. The basal diet was formulated to meet the nutrient requirements of broilers based on the National Research Council (1994), and its nutrient profile was shown in **Table 1**.

### Sample Collection

On d 7 and 14 of heat treatment, one broiler from each replicate was selected at random for blood sample collection from the wing vein and used to prepare the serum. On d 14 of heat treatment, one bird from each replication ( $n = 6/\text{treatment}$ ) close to the average body weight of the group was killed by cervical dislocation for tissue samples collection. The about 2 cm jejunum and 1 g spleen were removed and kept in phosphate-buffered

formalin (10%) for morphology analyses. The spleen, thymus, and bursa of Fabricius were removed and weighed to determine the growth index. About 2 g spleen of each sample was taken and immediately frozen in liquid nitrogen to analyze the cytokine levels, relative mRNA levels of immune signal pathway genes and apoptosis genes, and RNA-Seq and data analysis.

## Record of Growth Performance and Rectal Temperature

At d 28 and 42 old, all broilers were weighed individually. The feed intake per replicate was recorded daily. The average daily gain (ADG) and average daily feed intake (ADFI) were calculated in each replicate. The feed conversion ratio (FCR) was expressed as total feed intake/total body weight gain. One bird per replicate was randomly selected to measure rectal temperature using a digital Celsius thermometer at d 1 (time 09:00), d 1 (time 17:00), d 3 (time 17:00), d 8 (time 17:00), and d 14 (time 17:00) of heat stress, respectively.

## Measurement of Serum Hormone Concentration

The concentrations of serum corticosterone (CORT), adrenocorticotropic hormone (ACTH), triiodothyronine (T3), and thyroxine (T4) were measured using the commercial ELISA kits according to manufacturer's instructions (ZCIBIO Technology Co., Ltd., Shanghai, China). This assay had high sensitivity and excellent specificity for the detection of chicken CORT, ACTH, T3, and T4. No significant cross-reactivity or interference between chicken CORT, ACTH, T3, T4, or any other analogs was observed. The dynamic ranges of CORT, ACTH, T3, and T4 ELISA kits were 5 ng/mL–160 ng/mL, 2.5 pg/mL–80 pg/mL, 0.25 nmol/L–8 nmol/L, and 7.5 nmol/L–240 nmol/L, respectively. The sensitivity levels of CORT, ACTH, T3, and T4 ELISA kits were 1.0 ng/mL, 0.1 pg/mL, 0.1 nmol/L, and 1.0 nmol/L, respectively. To assess intraassay precision, 3 samples of a known protein concentration were tested 20 times on the same plate, and the CV was calculated to be <10%. Interassay precision was assessed using 20 assays of the 3 samples of known concentration, and the calculated CV was <13%. The microplates provided in these kits have been precoated with antibodies specific for chicken CORT, ACTH, T3, or T4. To quantitatively determine the levels of CORT, ACTH, T3, or T4 present in the samples, horseradish peroxidase-conjugated antibodies specific for CORT, ACTH, T3, or T4 were added to each well. A standard curve was generated by plotting the optical density against the corresponding concentration of the standards and was subsequently used to determine the amounts of CORT, ACTH, T3, or T4 in an unknown sample.

## Jejunum Morphology Measurements

Formalin-fixed samples were dehydrated, embedded in paraffin, and the jejunum sections were stained with hematoxylin and eosin. The mucosa structure was observed with a BX43 Olympus microscope (Olympus, Tokyo, Japan) and analyzed with Motic images advanced 3.2 software system (CaseViewer, Xiamen, China). Ten well-orientated intact crypt-villi units per sample

were selected for measurement, and villus height to crypt depth ratio (V/C) was calculated.

## Immune Organ Growth Index Determination

Immune organ index (%) was calculated as the immune organ fresh weight (g)/chicken weight (g) × 100% before slaughter (6).

## Splenic Cytokine Measurements

The concentrations of interleukin tuftsin, properdin, fibronectin (FN), interleukin (IL)-1 $\beta$ , IL-2, IL-4, tumor necrosis factor (TNF)- $\alpha$ , and interferon (IFN)- $\gamma$  in the spleen of broilers were measured using commercially available ELISA kits specific for chicken, according to manufacturer's instructions (ZCIBIO Technology Co., Ltd., Shanghai, China).

## RNA Extraction, Reverse Transcription, and Real-Time PCR Analysis

To quantify mRNA, ~50 mg of spleen tissue was pulverized in liquid nitrogen, and total RNA was isolated from the homogenate using TRIzol (Beyotime Biotechnology, Shanghai, China) according to manufacturer instructions. The first-strand cDNA was then synthesized using a reverse transcription kit (TaKaRa, Japan). All primers were designed in NCBI using the chick gene sequence to produce an amplification product (Table 2). Real-time PCR was performed as described in a previous study (14). The relative expression of mRNA was calculated using the  $2^{-\Delta\Delta C_t}$  method after normalization with GAPDH as a housekeeping gene.

## TUNEL Staining

Spleen samples were pretreated as a method for H&E staining. The TUNEL staining was performed using a commercial kit (Servicebio, Wuhan, China). DNA breaks were detected on a single-cell level by terminal-deoxynucleotidyl transferase-mediated nick end labeling (TUNEL) with an *in situ* cell death detection kit (Servicebio, Wuhan, China) as described in a previous study (15).

## RNA-Seq and Data Analysis

Total RNA was isolated from the spleen using an RNA Isolated Kit (TaKaRa, Japan) according to the manufacturer's protocol. The quality and quantity of extracted RNA were determined using Nanodrop Spectrophotometers (IMPLEN, CA, USA) and a Qubit Fluorometer (Life Technologies, CA, USA). RNA Integrity Number (RIN) was determined using 2,100 RNA Nano 6,000 Assay Kit (Agilent Technologies, CA, USA). The prepared libraries were sequenced using an Illumina HiSeq3000 sequencer (SeqHealth Tech, Wuhan, China). Subsequent procedures were undertaken as described previously (16).

After the quality raw RNA-seq data was controlled, we obtained clean data for further analysis. Read count matrices were obtained using the Feature Counts package, the data were aligned to reference chicken genome (GRCg6a) downloaded from NCBI ([https://www.ncbi.nlm.nih.gov/genome/111?genome\\_assembly\\_id=451987](https://www.ncbi.nlm.nih.gov/genome/111?genome_assembly_id=451987)) performed by HISAT2. An FDR corrected *P*-value cutoff of 0.05 and a fold-change cut-off of

**TABLE 2 |** Sequence of primers for real-time PCR.

Accession no.	Target gene <sup>a</sup>	Nucleotide sequence of primers(5'-3')	Product size (bp)
NM_001006685.1	<i>HSP70</i>	F: CTGGCAATAAGCGAGCAGTGAGG R: AATGCTGGCTTGCCTGGAAGAG	86
NM_205129	<i>NF-κB</i>	F: GTGTGAAGAAACGGGAAGCTG R: GGCACGGTTGTCATAGATGG	205
NM_001001472.2	<i>IKB-α</i>	F: GGCAGATGTGAACAAGGTGA R: TATCTGCAGGTGAGCTGTGG	118
NM_001353939.1	<i>p38 MAPK</i>	F: GCGAGTCCCTAATGCCTACG R: ACAACTGTTGAGCCACACTCA	199
NM_205095.1	<i>JNK</i>	F: TGACCGAGTGAGGAGACGAT R: ACTGTATCGAACGACGACACA	211
NM_205388.1	<i>ERK</i>	F: AGAATCTCACAGCGTCTCGC R: GGTGTGATTCATCAGCATCTTCA	235
NM_001199384.1	<i>MDM2</i>	F: CAAATGCAACTTCCAGCCAAC R: GGTCAACGAGATGCTGCTCCGAC	125
NM_205264.1	<i>TP53</i>	F: CCCATCCTACCATCCCTTACA R: CTCGATCTTGCGGTCCCTC	108
XM_416167.6	<i>Apaf-1</i>	F: AAGGGCATAAGGAAGCAATCAA R: CAGCACAAGAAAGAACAGCACC	156
XM_015290060.2	<i>Bax</i>	F: TATGGGACACCAGGAGGGTA R: CGTAGACCTTGCAGGATAAAGC	166
XM_015288356.2	<i>Fas</i>	F: CTTCTCGGTGTG AACATTGCG R: GCTGGTGGGTCAAGTCAACATC	300
NM_205339.2	<i>BCL-2</i>	F: ATCGTCGCCTTCTTCGAGTT R: ATCCGATCCTCCGTTGTCTC	150
XM_015276122.2	<i>Caspase3</i>	F: TACCGACTGTTCATCTCGTTTCAGG R: ACTGCTTCGCTTGCTGTGATCTTC	166
XM_424580.6	<i>Caspase9</i>	F: CCGAAGGAGCAAGCAGC R: AGTTGGACTGGGATGGAC	243
XM_015281453.2	<i>Cyt-C</i>	F: TGTCCAGAAATGTTCCAGTG R: CCTTTGTTCTTATTGGCATCTGTG	138
NM_204305.1	<i>GAPDH</i>	F: CGATCTGAACATACATGGTTTAC R: TCTGCCATTTGATGTTGC	153
NM_205242.2	<i>LRP1</i>	F: CGAGTGCCAGAACCTGATGT R: ATTCCGACGCGCTCGATCTTA	197
NM_001277704.1	<i>PERPB</i>	F: CCCTACGTGCACCAAGCATC R: TGCTCTCCCCATCCATAGTC	102
XM_015296060.2	<i>PIGs</i>	F: GAATGAAGGACTGGCGACT R: GCCACTGCTCGGTATACCTCT	168
NM_205508.1	<i>FOS</i>	F: GGGGACAGCCTCACCTACTA R: GGTGCAGAAATCCTGCGAGT	84
NM_001024835.1	<i>IL-21</i>	F: AAAAGATGTGGTAAAAGATAAGGATGT R: GCTGTGAGCAGGCATCCA	78
NM_001010842.2	<i>HSPB9</i>	F: AGAGACCATCTTCAGCGAGC R: TTCTTCACATCCTGGCAGACG	177
NM_001307950.1	<i>URAH</i>	F: CACGATGGAGGTGAGGCGAG R: GATGGTGAAGACGACCTCCA	313
NM_001198975.1	<i>NRXN1</i>	F: AGCTCAGGTGGGTTAGCAAAT R: ACAAGCGTTTCATTAGATGTTGAGA	349
NM_001318433.1	<i>MMR1L</i>	F: AGTGCATTGAGTCAAGGTGAA R: GGATGCTATTCCAGGACCCG	264
NM_001006525.1	<i>EA2</i>	F: TGGATGACATTGAACGAGAATA R: CCAGATTCACTCAGCTGCAA	313
XM_414168.6	<i>HSD17B2</i>	F: CGTGCATCATCACGGAAGCG R: AGCTCCAGGGCCATCCTTAT	112
XM_025155931.1	<i>BLB3</i>	F: TCCTGTGCAGTAAGAAAGGTCA	106

(Continued)

**TABLE 2 |** Continued

Accession no.	Target gene <sup>a</sup>	Nucleotide sequence of primers(5'-3')	Product size (bp)
NM_001201386.1	<i>OC3</i>	R: TGCAGATTCTGGTTGGAGGC F: ACTCCGAGTGTAGGGAGAGC	120
NM_001030731.1	<i>CD36</i>	R: AGGGCTCTTTGGGATCTTTCT F: CTTTGCACCCATTGGACACT	123
		R: TCTTCGTGAGAGAAGCTGTATGG	

<sup>a</sup>*HSP70*, heat shock protein 70; *NF-κB*, nuclear factor kappa-B; *IKB-α*, inhibitor of *NF-κB-α*; *p38 MAPK*, *p38 mitogen-activated protein kinase*; *JNK*, *c-Jun N-terminal kinase*; *ERK*, extracellular regulated protein kinases; *MDM2*, murine double minute 2; *TP53*, tumor protein p53; *Apaf-1*, apoptotic protease activating factor-1; *Bax*, *BCL-2-associated X*; *Fas*, *Fas cell surface death receptor*; *BCL-2*, *B-cell lymphoma 2*; *Cyt-C*, *Cytochrome c*; *LRP1*, *LDL receptor related protein 1/CD91*; *PERPB*, *p53 apoptosis effector related to PMP22 B*; *PIGs*, *phosphatidylinositol glycan anchor biosynthesis class S*; *GAPDH*, *glyceraldehyde 3-phosphate dehydrogenase*; *FOS*, *Fos proto-oncogene*, *HSPB9*, *heat shock protein family B (small) member 9*; *BLB3*, *Major histocompatibility complex class II beta chain BLB3*; *EA2*, *ELL associated factor 2*; *HSD17B2*, *Gallus gallus hydroxysteroid 17-beta dehydrogenase 2*; *IL21*, *interleukin 21*; *NRXN1*, *neurexin 1*; *OC3*, *osteocalcin-like protein OC3*; *CD36*, *CD36 molecule*; *MMR1L*, *macrophage mannose receptor 1-like*.

2, were used as the standard for differentially expressed genes using the edge R package (version 3.12.1). The gene ontology database (<http://www.geneontology.org/>) was used to determine GO functional classification and the KEGG pathway database (<http://www.genome.jp/kegg/>) was used to determine KEGG pathway involvement of the differentially expressed genes using the KOBAS software (version: 2.1.1) with a corrected *P*-value cutoff of 0.05 to judge statistically significant enrichment.

## Statistical Analyses

All statistical analyses except the RNA-Seq were performed using SPSS 22.0 software and shown as mean ± standard error of the mean (SEM). The data were checked for normality and homoscedasticity of the data variance using the Shapiro-Wilk test and Levene's test, respectively. The parametric data were analyzed by 2-way ANOVA using the General Linear Models procedure. The model included the main effects of RSV, heat stress, and their interaction. Group comparisons were performed using the one-way ANOVA followed by Duncan's multiple-ranges test. The non-parametric data were analyzed by Kruskal-Wallis test followed by Dunn's multiple comparisons test (17). *P* values < 0.05 were considered statistically significant.

## RESULTS

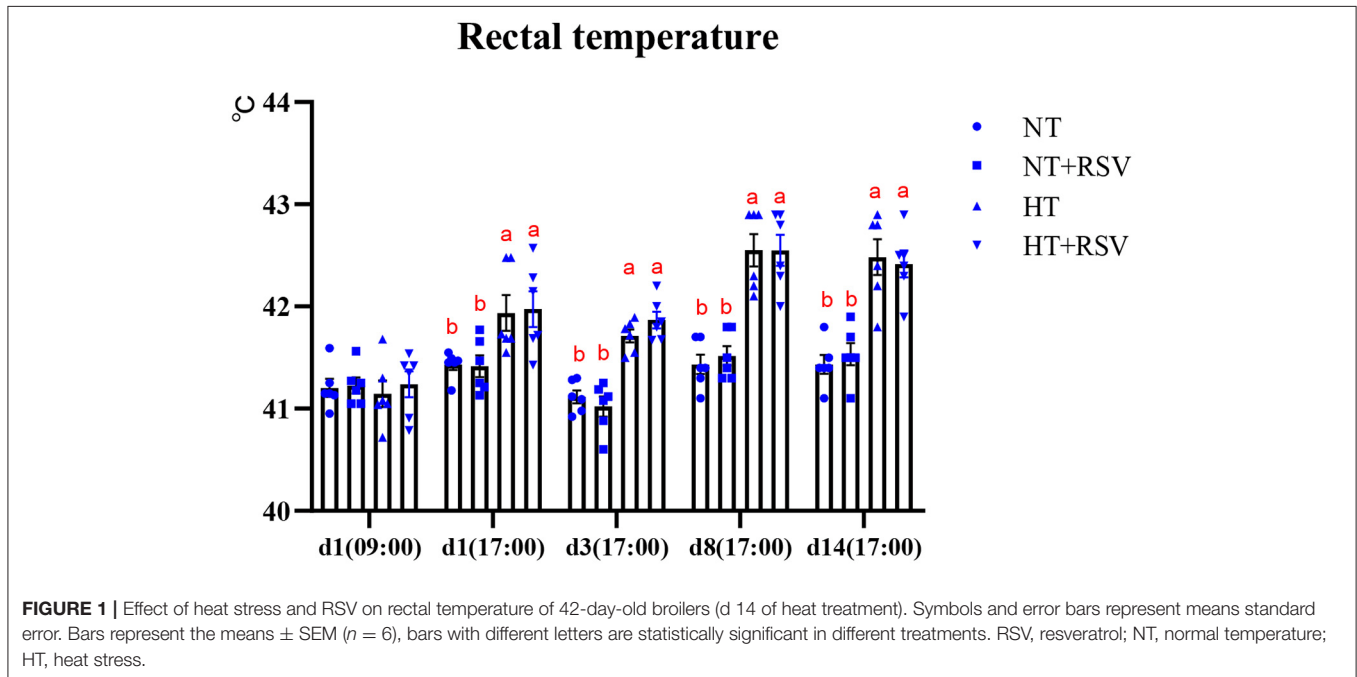
### Growth Performance and Rectal Temperature

Heat stress significantly decreased the body weight (BW), ADG, and ADFI (*P* = 0.003, 0.001, and <0.001, respectively) (Table 3). Dietary RSV supplementation improved the FCR (*P* = 0.014), and partially reversed the negative alterations in BW, ADG, and ADFI caused by heat stress (*P* > 0.05). Dietary supplementation with RSV under heat stress increased BW and ADG by 2.03 and 4.08% compared with the HT group (*P* > 0.05). The FCR in the NT + RSV and HT + RSV groups decreased by 6.78 and 5.08% than the HT group (*P* < 0.05). The rectal temperature

**TABLE 3** | Effect of heat stress and RSV on growth performance of 42-day-old broilers (14 of heat treatment).

	Dietary treatments				SEM	P-values		
	NT	NT + RSV	HT	HT + RSV		P-RSV	P-Stress	P-RSV × stress
BW, g	984.52 <sup>a</sup>	987.55 <sup>a</sup>	929.82 <sup>b</sup>	948.73 <sup>ab</sup>	8.187	0.435	0.003	0.571
ADG, g	31.04 <sup>a</sup>	31.02 <sup>a</sup>	27.47 <sup>b</sup>	28.59 <sup>b</sup>	0.484	0.486	0.001	0.471
ADFI, g	70.24 <sup>a</sup>	68.26 <sup>a</sup>	64.76 <sup>b</sup>	63.96 <sup>b</sup>	0.749	0.232	<0.001	0.604
FCR	2.26 <sup>ab</sup>	2.20 <sup>b</sup>	2.36 <sup>a</sup>	2.24 <sup>b</sup>	0.019	0.014	0.051	0.424

Data are means of 6 replicates of 18 broilers per dietary treatment. Data are presented as mean ± SEM. Values in the same row with different superscript are significantly different by one-way ANOVA. P-values (P-RSV, P-Stress, or P-RSV × Stress) ≤ 0.05 indicates RSV, heat stress, or the interaction between heat stress and RSV. RSV, resveratrol; BW, body weight; ADG, average daily gain; ADFI, average daily feed intake; FCR, feed conversion ratio; NT, normal temperature; HT, heat stress.



of birds at different time points was shown in **Figure 1**. At d 1 (09:00), before high-temperature exposure, all treatments had similar rectal temperatures, which increased during heat stress. However, RSV treatment had a non-significant effect on rectal temperature raised by heat stress.

### Serum Hormone Concentration

RSV supplementation significantly decreased the content of ACTH on d 7 ( $P < 0.001$ ) and 14 ( $P = 0.020$ ), and CORT on d 14 ( $P = 0.001$ ) (**Table 4**). Heat stress significantly increased CORT, ACTH, T3, and T4 concentrations in serum on d 7 and 14 ( $P < 0.01$ ). Whereas, the combination RSV and heat stress markedly decreased ACTH and T3 on d 7 ( $P = 0.023$  and  $0.049$ , respectively), and CORT on d 14 ( $P = 0.014$ ).

The concentrations of CORT, ACTH, T3, and T4 in serum were higher ( $P < 0.05$ ) in the HT group than the NT and NT + RSV groups on d 7 and 14, whereas supplementation with RSV under heat stress markedly decreased the concentration of ACTH on d 7 and 14, T3 on d 7, and CORT on d 14 ( $P < 0.05$ ). However, supplementation with RSV and the combination

of RSV and stress did not affect ( $P > 0.05$ ) the contents of T4 and the ratio of T3–T4 (T3/T4) on d 7 and 14.

### Morphology of Jejunum and Growth Index of the Thymus, Spleen, and Bursa of Fabricius

Dietary supplementation with RSV significantly increased the V/C value in the jejunum ( $P = 0.02$ ) (**Table 5**). The V/C value was higher in the HT + RSV and NT + RSV groups than in the HT group ( $P < 0.05$ ).

Heat stress, the supplementation with RSV, and the combination of RSV and stress did not affect the growth index of the spleen, thymus, and bursa of Fabricius on d 14 ( $P > 0.05$ ) (**Table 6**).

### The Levels of Cytokines in the Spleen

The supplementation with RSV had significant effect on the levels of IL-1 $\beta$ , TNF- $\alpha$ , and IFN- $\gamma$  ( $P = 0.024$ ,  $0.039$ , and  $0.011$ , respectively) (**Table 7**). Heat stress markedly elevated

**TABLE 4 |** Effect of heat stress and RSV on the serum hormone concentration of 35-day-old and 42-day-old broilers (d 7 and 14 of heat treatment).

	Dietary treatments				SEM	P-values		
	NT	NT + RSV	HT	HT + RSV		P-RSV	P-stress	P-RSV × stress
<b>D7</b>								
CORT, ng/mL	67.43 <sup>b</sup>	52.99 <sup>b</sup>	112.43 <sup>a</sup>	108.78 <sup>a</sup>	6.55	0.163	<0.001	0.396
ACTH, pg/mL	43.30 <sup>bc</sup>	37.19 <sup>c</sup>	63.67 <sup>a</sup>	46.33 <sup>b</sup>	2.48	<0.001	<0.001	0.023
T3, nmol/L	4.10 <sup>c</sup>	4.55 <sup>bc</sup>	6.62 <sup>a</sup>	5.37 <sup>b</sup>	0.29	0.329	0.001	0.049
T4, nmol/L	125.00 <sup>bc</sup>	111.18 <sup>c</sup>	192.66 <sup>a</sup>	158.92 <sup>ab</sup>	9.36	0.084	<0.001	0.452
T3/T4	0.033	0.042	0.035	0.035	0.0017	0.199	0.514	0.221
<b>D14</b>								
CORT, ng/mL	51.47 <sup>bc</sup>	45.39 <sup>c</sup>	103.64 <sup>a</sup>	65.36 <sup>b</sup>	5.487	0.001	<0.001	0.014
ACTH, pg/mL	35.66 <sup>c</sup>	34.30 <sup>c</sup>	61.29 <sup>a</sup>	48.33 <sup>b</sup>	2.637	0.020	<0.001	0.055
T3, nmol/L	3.88 <sup>b</sup>	3.73 <sup>b</sup>	5.27 <sup>a</sup>	4.39 <sup>ab</sup>	0.191	0.106	0.003	0.251
T4, nmol/L	104.23 <sup>b</sup>	107.96 <sup>b</sup>	156.96 <sup>a</sup>	143.65 <sup>a</sup>	6.028	0.558	<0.001	0.302
T3/T4	0.038	0.036	0.034	0.031	0.0015	0.366	0.152	0.952

Data are presented as mean ± SEM, n = 6. Values in the same row with different superscript are significantly different by one-way ANOVA. P-values (P-RSV, P-Stress, or P-RSV × Stress) ≤ 0.05 indicates RSV, heat stress, or the interaction between heat stress and RSV. RSV, resveratrol; CORT, corticosterone; ACTH, adrenocorticotropic hormone; T3, triiodothyronine; T4, thyroxine; NT, normal temperature; HT, heat stress.

**TABLE 5 |** Effect of heat stress and RSV on the morphology of jejunum of 42-day-old broilers (d 14 of heat treatment).

	Dietary treatments				SEM	P-values		
	NT	NT + RSV	HT	HT + RSV		P-RSV	P-stress	P-RSV × stress
Villus height, μm	1,039.17	1,080.25	994.48	1,090.73	28.800	0.268	0.779	0.651
Crypt depth, μm	161.46	157.90	188.41	156.94	5.648	0.077	0.222	0.077
V/C	6.45 <sup>ab</sup>	6.83 <sup>a</sup>	5.40 <sup>b</sup>	6.99 <sup>a</sup>	0.226	0.020	0.309	0.080

Data are presented as mean ± SEM, n = 6. Values in the same row with different superscript are significantly different by one-way ANOVA. P-values (P-RSV, P-Stress, or P-RSV × Stress) ≤ 0.05 indicates RSV, heat stress, or the interaction between heat stress and RSV. RSV, resveratrol; V/C, Villus length/Crypt depth; NT, normal temperature; HT, heat stress.

**TABLE 6 |** Effect of heat stress and RSV on organ index of 42-day-old broilers (d 14 of heat treatment).

	Dietary treatments				SEM	P-values		
	NT	NT + RSV	HT	HT + RSV		P-RSV	P-stress	P-RSV × stress
Spleen, %	0.326	0.251	0.196	0.176	0.0193	0.511	0.096	0.743
Thymus, %	0.322	0.349	0.352	0.300	0.0107	0.796	0.204	0.064
Bursa of Fabricius, %	0.087	0.121	0.139	0.121	0.0121	0.861	0.173	0.504

Data are presented as mean ± SEM, n = 6. Values in the same row with different superscript are significantly different by one-way ANOVA. P-values (P-RSV, P-Stress, or P-RSV × Stress) ≤ 0.05 indicates RSV, heat stress, or the interaction between heat stress and RSV. RSV, resveratrol; NT, normal temperature; HT, heat stress.

the levels of tuftsin ( $P = 0.001$ ), properdin ( $P < 0.001$ ), FN ( $P < 0.001$ ), IL-1 $\beta$  ( $P < 0.001$ ), IL-2 ( $P < 0.001$ ), IL-4 ( $P < 0.001$ ), and TNF- $\alpha$  ( $P < 0.001$ ), whereas it decreased IFN- $\gamma$  levels ( $P = 0.002$ ). Whereas, the combination of RSV and heat stress markedly decreased tuftsin ( $P = 0.031$ ), properdin ( $P = 0.021$ ), IL-1 $\beta$  ( $P = 0.001$ ), IL-2 ( $P = 0.016$ ), IL-4 ( $P = 0.012$ ), and TNF- $\alpha$  ( $P = 0.038$ ). Dietary supplementation with RSV under heat stress lowered the concentration of tuftsin, properdin, FN, IL-1 $\beta$ , IL-2, IL-4, and TNF- $\alpha$ , but elevated IFN- $\gamma$  compared with the HT group ( $P < 0.05$ ).

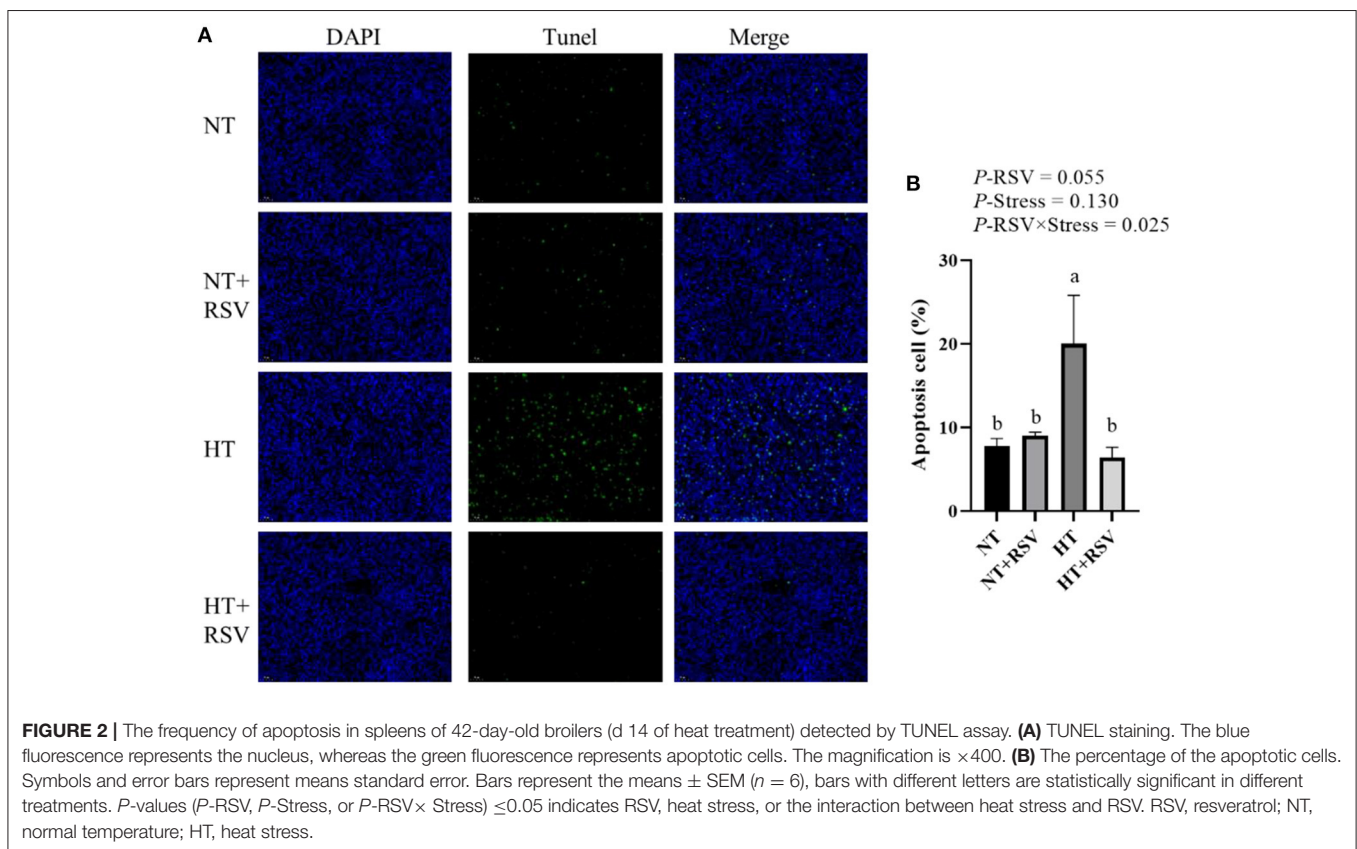
## Levels of Apoptosis of the Spleen

The TUNEL assay was used to detect the number of apoptotic cells in the spleen of the broiler. The TUNEL positive signal (green fluorescence) and nuclear signal (blue fluorescence) of the spleen were observed. As presented in **Figures 2A,B**, the combined RSV and heat stress markedly decreased apoptotic cells ( $P = 0.025$ ). The number of apoptotic cells was significantly higher in the HT-treated group than in the other groups ( $P < 0.05$ ). RSV supplementation during heat stress markedly reduced the frequency of apoptotic cells compared to the heat stress-treated group ( $P < 0.05$ ).

**TABLE 7** | Effect of heat stress and RSV on the levels of cytokines in spleen of 42-day-old broilers (d 14 of heat treatment).

	Dietary treatments				SEM	P-values		
	NT	NT + RSV	HT	HT + RSV		P-RSV	P-stress	P-RSV × stress
Tuftsins, ng/g	75.81 <sup>b</sup>	86.32 <sup>b</sup>	122.38 <sup>a</sup>	97.47 <sup>b</sup>	5.127	0.354	0.001	0.031
Properdin, ng/g	36.28 <sup>c</sup>	45.33 <sup>c</sup>	87.53 <sup>a</sup>	70.79 <sup>b</sup>	5.038	0.459	<0.001	0.021
FN, μg/g	455.96 <sup>b</sup>	424.82 <sup>b</sup>	711.81 <sup>a</sup>	561.30 <sup>b</sup>	33.610	0.087	0.001	0.250
IL-1β, pg/g	1,533.07 <sup>c</sup>	1,964.51 <sup>c</sup>	4,875.27 <sup>a</sup>	3,011.86 <sup>b</sup>	310.940	0.024	<0.001	0.001
IL-2, pg/g	1,196.72 <sup>c</sup>	1,465.20 <sup>bc</sup>	2,284.60 <sup>a</sup>	1,792.11 <sup>b</sup>	110.252	0.443	<0.001	0.016
IL-4, pg/g	550.15 <sup>c</sup>	648.47 <sup>c</sup>	1,189.15 <sup>a</sup>	891.75 <sup>b</sup>	62.983	0.177	<0.001	0.012
TNF-α, pg/g	238.34 <sup>c</sup>	238.95 <sup>c</sup>	527.82 <sup>a</sup>	373.31 <sup>b</sup>	30.494	0.039	<0.001	0.038
IFN-γ, pg/g	491.59 <sup>a</sup>	587.17 <sup>a</sup>	313.52 <sup>b</sup>	456.98 <sup>a</sup>	28.859	0.011	0.002	0.576

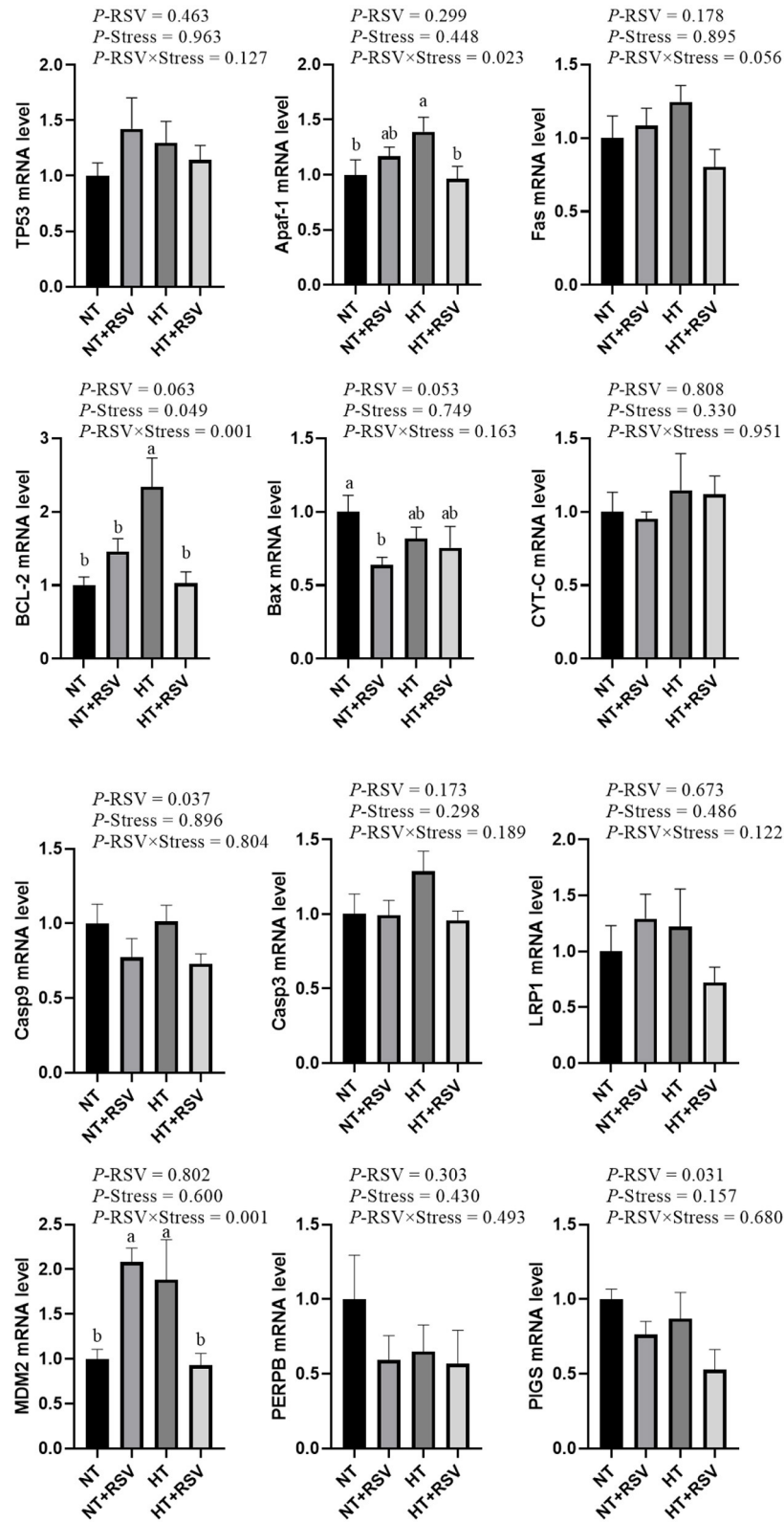
Data are presented as mean ± SEM, n = 6. Values in the same row with different superscript are significantly different ( $P < 0.05$ ) by one-way ANOVA. P-values (P-RSV, P-Stress, or P-RSV × Stress) ≤ 0.05 indicates RSV, heat stress, or the interaction between heat stress and RSV. RSV, resveratrol; NT, normal temperature; HT, heat stress; FN, fibronectin; IL-1β, Interleukin-1β; IL-2, Interleukin-2; IL-4, Interleukin-4; TNF-α, tumor necrosis factor-α; IFN-γ, interferon γ.



Based on the above results, the relative mRNA levels of apoptosis genes in the spleen of the broilers were investigated. As shown in **Figure 3**, the supplementation with RSV decreased the relative gene expression of *Caspase 9* and (phosphatidylinositol glycan anchor biosynthesis class S) *PIGs* ( $P = 0.037$  and  $0.031$ , respectively). Heat stress significantly affected the relative gene expression of B-cell lymphoma 2 (*BCL-2*) ( $P = 0.049$ ). The relative gene expression of *BCL-2* ( $P = 0.001$ ), apoptotic protease activating factor-1 (*Apaf-1*) ( $P = 0.023$ ), and murine double

minute 2 (*MDM2*) ( $P = 0.001$ ) were markedly decreased by the combination of RSV and heat stress.

As expected, the relative mRNA levels of *BCL-2* and *Apaf-1* in the spleen were elevated in the HT group compared with the NT group ( $P < 0.05$ ). Compared with the NT group, the relative mRNA level of *MDM2* was markedly increased in the HT and NT+RSV groups ( $P < 0.05$ ), and *BCL-2*-associated X (*BAX*) level was reduced in the NT + RSV group ( $P < 0.05$ ). Remarkably, the RSV supplement under heat stress down-regulated the splenic



**FIGURE 3 |** Effect of heat stress and RSV on some related gene involved in apoptosis genes expression levels in spleen of 42-day-old broilers (d 14 of heat treatment). Bars represent the means ± SEM ( $n = 6$ ), bars with different letters are statistically significant in different treatments.  $P$ -values ( $P$ -RSV,  $P$ -Stress, or  $P$ -RSV × Stress)  $\leq 0.05$  indicates RSV, heat stress, or the interaction between heat stress and RSV.



*BCL-2*, *Apaf-1*, and *MDM2* mRNA expression compared with the HT group ( $P < 0.05$ ).

## Transcriptional Response in Broilers Spleen After RSV Treatment Under Heat Stress

The splenic transcriptome showed that 65 genes were downregulated and 51 genes were upregulated in the HT group compared to the NT group (fold-change of at least 2) (Figures 4A,E). The upregulated genes enriched GO terms were involved in defense response, response to external biotic stimulus, cytokine activity, regulation of immune system process, innate immune response (Figure 4B). The downregulated genes involved calcium ion binding, negative regulation of immune system process, and cell adhesion (Figure 4C). KEGG analysis revealed a reduction in pathways associated with ECM-receptor interaction, phagosome, and adipocytokine signaling pathway (Figure 4D). The expression of four downregulated [*NRXN1* (neurexin 1), *OC3* (osteocalcin-like protein OC3), *CD36* (CD36 molecule), and *MMR1L* (macrophage mannose receptor 1-like)] genes was evaluated by RT-PCR analysis. The results showed similar expression patterns observed with transcriptome sequencing, validating our transcriptome data (Figure 4F).

We further investigated the splenic transcriptome of the broilers in the HT and HT + RSV groups, 59 genes were downregulated and 87 genes were upregulated in the HT + RSV group compared to the HT group (fold-change of at least 2) (Figures 5A,E). The upregulated genes enriched GO terms were involved in positive regulation of immune system process, hematopoietic or lymphoid organ development, immune system development, and hemopoiesis (Figure 5B). KEGG enrichment for up genes showed an increase in pathways associated with the toll-like receptor signaling pathway and salmonella infection (Figure 5C). The downregulated genes were involved in protein heterodimerization activity, protein-DNA complex subunit organization (Figure 5D). The expression of five upregulated [*FOC* (Fos proto-oncogene), *NRXN1*, *HSPB9* (heat shock protein family B (small) member 9), *MMR1L*, and *BLB3* (Major histocompatibility complex class II beta chain BLB3)] and three downregulated [*EAF2* (ELL associated factor 2), *HSD17B2* (Gallus gallus hydroxysteroid 17-beta dehydrogenase 2), and *IL21* (interleukin 21)] genes were detected by RT-PCR analysis. The results showed similar expression patterns observed with transcriptome sequencing, validating our transcriptome data (Figure 5F).

## The Relative mRNA Levels of Immune Signal Pathway Genes in the Spleen of Broilers

Based on the above results, the relative genes expression of immune signal pathway genes in the spleen of broilers was investigated. As shown in Figure 6, the supplementation with RSV decreased the relative gene expression of extracellular regulated protein kinases (*ERK*) ( $P = 0.007$ ). Heat stress increased the relative gene expression of inhibitor of NF- $\kappa$ B- $\alpha$  (*IKB- $\alpha$* ) ( $P = 0.036$ ). The relative mRNA expression of NF- $\kappa$ B

( $P = 0.009$ ), heat shock protein 70 (*HSP70*) ( $P = 0.005$ ), and *p38 MAPK* ( $P = 0.023$ ) were markedly decreased by the combination of RSV and heat stress.

The relative mRNA levels of *ERK* and *IKB- $\alpha$*  in the spleen were higher in the HT group than the NT and NT+RSV groups ( $P < 0.05$ ), and *NF- $\kappa$ B* and *HSP70* in the spleen were higher in the HT group than the NT group ( $P < 0.05$ ). The HT + RSV group significantly down-regulated the *NF- $\kappa$ B*, *ERK*, *IKB- $\alpha$* , *HSP70*, and *p38 MAPK* mRNA levels in the spleen compared with the HT group ( $P < 0.05$ ).

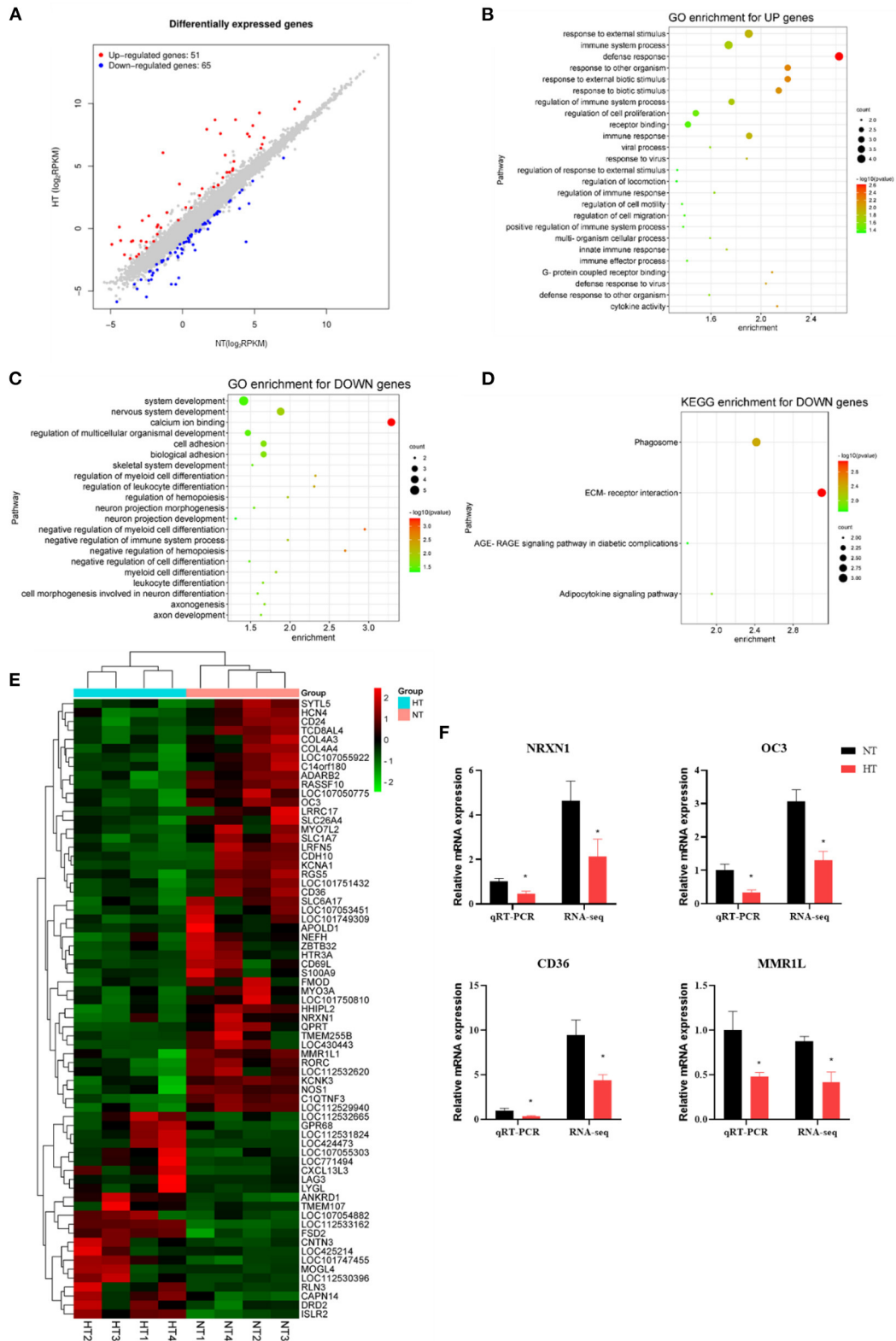
## DISCUSSION

In this study, broilers reared under heat stress showed an increased rectal temperature from time point 2 to the end of the heat stress. The increase in rectal temperature justifies the plausibility of the chronic heat stress model (18). Similarly, many studies have reported that chronic heat exposure resulted in markedly higher rectal temperatures in the heat stress group of broilers (19, 20). Moreover, a previous study showed that diets supplemented with 500 mg/kg of RSV suppressed the increase in rectal temperature caused by cyclic heat stress (21). However, in this study, dietary RSV did not alleviate the increase in rectal temperatures in chronically heat-stressed broilers. The differences in thermoregulatory effects might be associated with species, doses of RSV, ages of animals, etc.

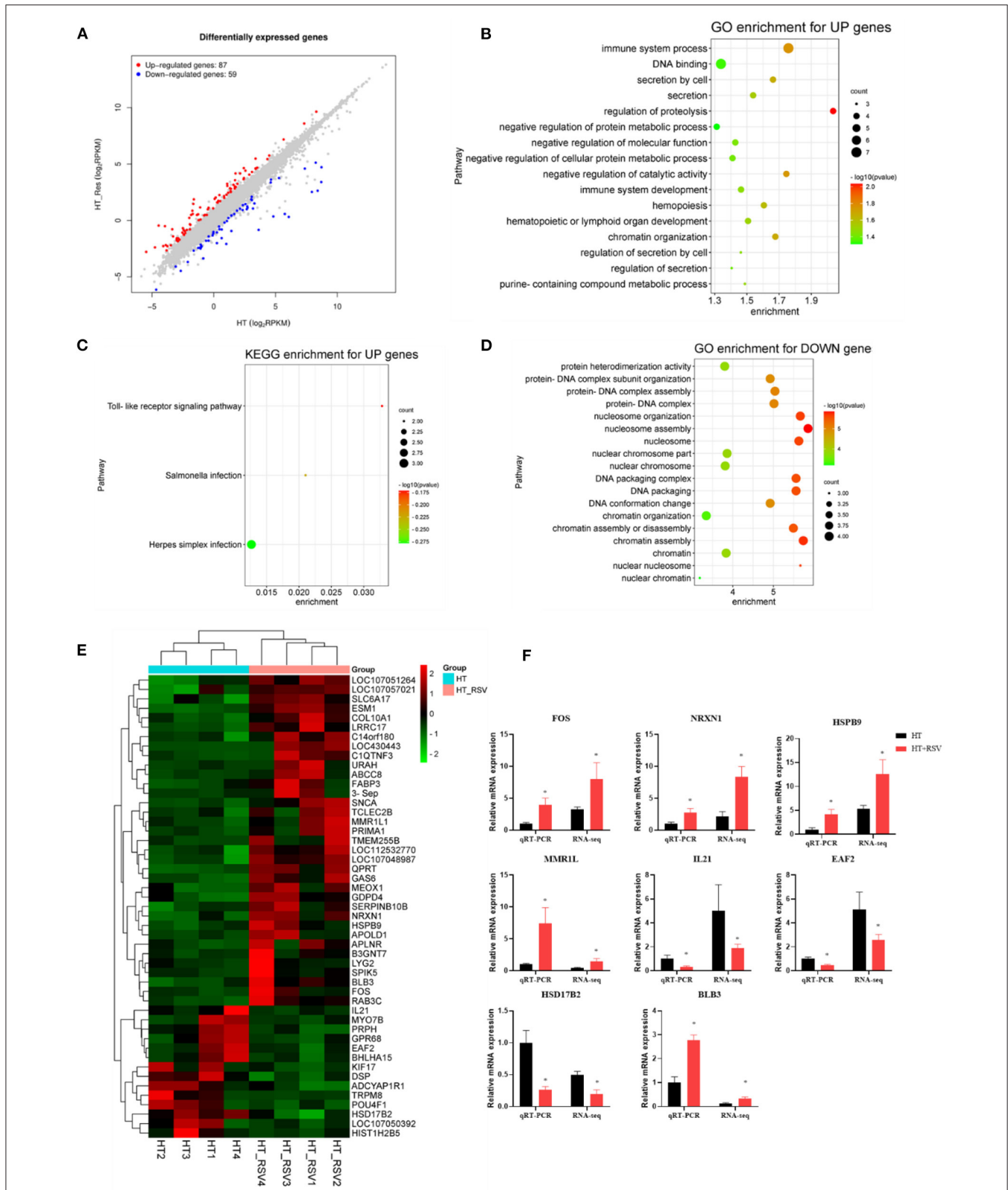
Heat stress decreased BW, ADG, and ADFI in this study while increasing FCR, which was consistent with earlier research (12, 19, 21). The retarded growth performance could be attributed to poor appetite, less efficiency of nutrients' absorption and utilization, and compromised health status, including endocrine disorders, systemic immune dysregulation, and oxidative damage (22). The supplementation with RSV has been demonstrated to increase ADG and decrease FCR during heat stress (21). Similarly, the present study found that dietary supplementation with RSV 500 mg/kg under heat stress enhanced BW and ADG by 2.03 and 4.08 percent, respectively, compared to the HT group. The FCR in the NT+RSV and HT + RSV groups decreased by 6.78 and 5.08% than the HT group. It might be explained that RSV induced the secretion of hormones (such as CORT and ACTH) and altered intestinal surface area to resist the damage caused by heat stress, to improve the production performance and feed conversion rate.

Increased blood concentrations of CORT are assumed to indicate heat stress. Chronic heat stress increased the concentration of CORT and ACTH in serum (21). This was consistent with our study. CORT has been shown in studies of mammals to regulate appetite via the effects of neuropeptide Y and leptin (23). Glucocorticoids reduced the number of lymphocytes in the blood during stress by inhibiting the maturation of their precursor cells in the thymus and inducing apoptosis, thereby suppressing the animal's immune system (24).

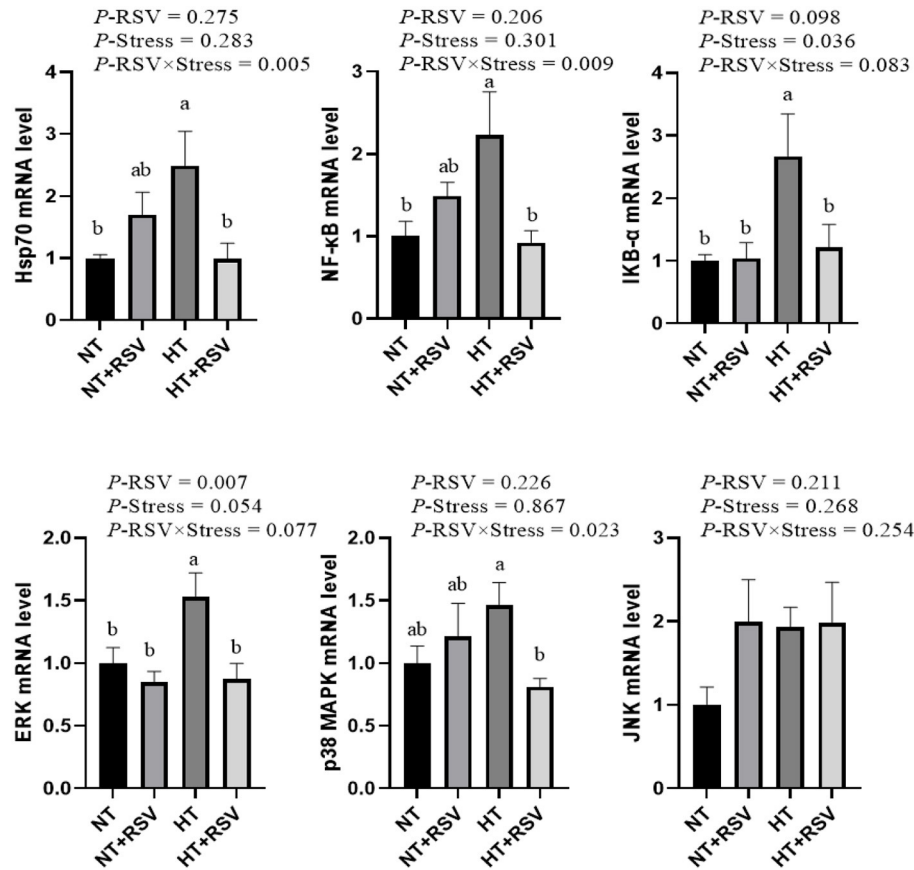
Besides the adrenal hormones, thyroid hormones are also important for maintaining homeostatic in animals (25). On d 7 and 14 of heat stress, the levels of T3 and T4 in serum in group HT were considerably higher than in the NT and



**FIGURE 4 |** Effects of heat stress on the splenic transcriptome of 42-day-old broilers (d 14 of heat treatment). **(A)** Numbers of heat stress-induced differentially expressed splenic genes ( $P < 0.05$  and fold change  $\geq 2$ ;  $n = 4$ ). **(B)** GO terms enrichment of splenic gene expression for up genes in broilers ( $P < 0.05$ ). **(C)** GO terms enrichment of splenic gene expression for down genes in broilers ( $P < 0.05$ ). **(D)** KEGG terms enrichment of splenic gene expression for down genes in broilers ( $P < 0.05$ ). **(E)** The heat map of DEG genes in broilers. **(F)** Validation of the gene expression profile by real-time PCR. Asterisk means significant difference with NT group (\* $P < 0.05$ ). RSV, resveratrol; NT, normal temperature; HT, heat stress.



**FIGURE 5 |** Effects of heat stress and RSV on the splenic transcriptome of 42-day-old broilers (d 14 of heat treatment). **(A)** Numbers of RSV-induced differentially expressed splenic genes ( $P < 0.05$  and fold change  $\geq 2$ ;  $n = 4$ ). **(B)** GO terms enrichment of splenic gene expression for up genes in broilers ( $P < 0.05$ ). **(C)** KEGG terms enrichment of splenic gene expression for up genes n broilers ( $P < 0.05$ ). **(D)** GO terms enrichment of splenic gene expression for down genes in broilers ( $P < 0.05$ ). **(E)** The heat map of DEG genes in broilers. **(F)** Validation of the gene expression profile by real-time PCR. Asterisk means significant difference with HT group ( $*P < 0.05$ ). RSV, resveratrol; HT, heat stress.



**FIGURE 6 |** Effect of heat stress and RSV on immune signal pathway genes expression levels in spleen of 42-day-old broilers (d 14 of heat treatment). Bars represent the means  $\pm$  SEM ( $n = 6$ ), bars with different letters are statistically significant in different treatments.  $P$ -values ( $P$ -RSV,  $P$ -Stress, or  $P$ -RSV  $\times$  Stress)  $\leq 0.05$  indicates RSV, heat stress, or the interaction between heat stress and RSV. RSV, resveratrol; NT, normal temperature; HT, heat stress.

NT + RSV groups, showing that a stressor could rapidly affect the regulation of the hypothalamic-pituitary-thyroid (HPT) axis. Similarly, chronic mild stress increased T4 and T3 serum levels in two different strains of rats (26). Inconsistently, chronic heat stress has been found to increase plasma concentration of CORT with a concomitant reduction in circulating thyroid hormones levels (27, 28). Our previous results indicated that heat stress significantly lowered the concentrations of T3 and T3/T4, and had a varying effect on the contents of T4 (21). A study showed that heat stress markedly reduced plasma T3 and T3/T4, and increased T4 in laying hens (29). Stress, depending on the type of stress had a complex influence on the HPT axis, which was affected by stress duration, intensity, predictability, biofluids, and hormone sampling time (26, 30).

Dietary RSV supplementation has been shown to reduce serum CORT and protect broilers from heat stress (31), which was consistent with the findings of this investigation. This study showed that supplementation with RSV under heat stress markedly decreased the concentration of ACTH on d 7 and CORT on d 14 when compared with the HT group. RSV may have weakened the hypothalamic-pituitary-adrenal (HPA) axis and inhibited adrenocortical hydroxylase. Furthermore, the HT+

RSV group had lower T3 concentrations on d 7 than the HT group, although supplementation with RSV and the combination of RSV and stress did not affect T4 and T3/T4 concentrations on d 7 and 14. RSV has previously been found to reduce HPA axis hyperactivity and modulate the HPT axis, alleviating depression in a stressed rat model (32). This implied that RSV supplementation had a positive regulatory effect on abnormal levels of serum hormones during heat stress and was considered essential evidence to support changes in growth performance, rectal temperature, and anti-inflammatory capacity. In addition, increased blood CORT concentrations induced by heat stress have been shown to suppress the production of cytokines such as IL-4, IL-5, IL-6, IL-12, IFN- $\gamma$ , and TNF- $\alpha$  (33). Glucocorticoids affected the balance of T-helper 1 (Th1) and T-helper 2 (Th2) by inhibiting IL-12.

It has been shown that heat stress could elevate the expression of pro-inflammatory cytokines and inhibit anti-inflammatory cytokines in broilers (17). A study exhibited that consecutive cyclic heat stress markedly elevated the hepatic mRNA levels of HSP70, TNF- $\alpha$ , and inducible nitric oxide synthase (34). Also, heat stress enhanced TNF- $\alpha$  and IL-4 relative mRNA levels in the chicken spleen while decreasing IFN- $\gamma$  and IL-2 mRNA

levels (35). The level of IFN- $\gamma$  in the spleen of heat-stressed broilers was reported to be decreased (36). According to a prior study, the splenic relative mRNA levels of IL-1 $\beta$ , IL-4, and IL-6 were dramatically up-regulated, while IL-2 mRNA levels were significantly down-regulated in the heat stress-treatment chicken (37). High environmental temperatures contributed to a significant increase in the plasma contents of IL-1, IL-6, and TNF- $\alpha$ , leading to a further increase in the body temperature (38). This study showed that heat stress markedly elevated the levels of tuftsin, properdin, FN, IL-1 $\beta$ , IL-2, IL-4, and TNF- $\alpha$  in the spleen, whereas decreased IFN- $\gamma$  levels. Lymphocytes are classified into 2 types, Th1 and Th2. In general, cytokines of the Th1-type (IL-2, IL-8, TNF- $\alpha$ , and IFN- $\gamma$ ) enhance cellular immunity, whereas cytokines of the Th2-type (IL-4, IL-6, and IL-10) act in humoral immunity (39, 40). Heat stress affected the immune system by altering the Th1:Th2 ratio (6), dietary supplementation with RSV might maintain the Th1:Th2 balance.

The basic function of tuftsin is to promote phagocytosis and regulate immune function (41). Serum tuftsin levels in patients with impaired spleen function decrease and lead to a decrease in neutrophil activity and increase in the incidence of infection (42). Properdin, a plasma glycoprotein, is the only known positive regulator in the complement system. It binds and stabilizes the alternative pathway C3 convertase C3bBb and may serve as a platform to form new C3bBb convertases on the cell surface (43–45). FN acts as a recognition factor for macrophages, and targets phagocytosed by macrophages must first bind to FN. Therefore, when FN decreases in the body, phagocytosis diminishes (46). In this study, dietary RSV supplementation significantly reduced the splenic levels of tuftsin, properdin, and FN caused by heat stress, implying that RSV supplementation improved the anti-inflammatory potential in white feather broilers.

Heat stress has been demonstrated that could cause apoptosis in animals (47–49). For instance, TUNEL staining revealed that heat-treated rats showed stronger villi epithelial cells undergoing apoptosis than the normal control (50). The increase in the apoptotic rate with increasing temperatures and apoptosis induction was an indication of the upregulation of cleaved caspase-3 (49). In line with those findings, the current investigation found that heat stress treatment significantly increased the frequency of apoptosis in splenic cells. The relative gene expression of *BCL-2* and *MDM2* was likewise elevated by heat stress. In response to cellular stressors, the p53 tumor suppressor triggered anti-proliferative mechanisms (51). *MDM2* is considered an oncogene due to the ability of its product to inhibit p53 tumor suppressor function (52). The *MDM2* gene is a downstream target of p53 and forms a tight auto-regulatory feedback loop. Inhibition of the *MDM2*-p53 feedback loop is essential for p53 activation in the cellular stresses response (53). Heat stress significantly enhanced the relative gene expression of *MDM2*, indicating *MDM2* activation may cause apoptosis.

It was reported that RSV has antagonistic effects on heat stress in chicken immune organs (6, 54). Consistent with the above studies, this study suggested that RSV markedly reduced the frequency of heat stress-induced apoptotic cells and enhanced immune function. The beneficial effects of

RSV on cisplatin-induced oxidative stress, inflammation, and apoptosis in female rats' ovarian and uterine tissues have been discovered (55). RSV may alleviate hyperoxia-induced mitochondrial dysfunction and apoptosis in alveolar epithelial cells through the SIRT1/PGC-1 $\alpha$  signaling pathway (56). Interestingly, in the present study, NT + RSV markedly decreased the relative gene expression of *BAX* compared with the NT group. The HT + RSV supplement down-regulated the *BCL-2* and *MDM2* mRNA levels in the spleen compared with the HT group. Caspase 3 plays an integral part in the progression of mitochondrial damage, which is positively associated with the apoptosis rate (57). As two members of the BCL-2 family, Bax exerts a pro-apoptotic effect, and BCL-2 plays an anti-apoptotic role, but both are critical regulators of apoptosis (58, 59). Therefore, the HT + RSV supplement down-regulated the *MDM2* mRNA levels compared with the HT group, suggesting that RSV can alleviate the apoptosis caused by heat stress mainly by reducing *MDM2*, thus affecting P53.

Then we used transcriptional profiling to find heat stress-induced pathways like defense response, response to external biotic stimulus, cytokine activity, regulation of immune system process, innate immune response, calcium ion binding, cell adhesion, and negative regulation of immune system process. The major enriched GO terms were involved in positive regulation of immune system process, immune system development, and hematopoietic or lymphoid organ development after RSV supplementation. It was suggested that the damage to broilers from chronic heat stress might be relieved by enhancing the immune system process, immune system development, and hematopoietic or lymphoid organ development. The results of the KEGG pathway enrichment analyses showed that the toll-like receptor signaling pathway and salmonella infection were key to RSV to respond to heat stress. Our previous study demonstrated that RSV could alleviate high-activated innate immunity and inflammatory response in yellow-feather broilers induced by heat stress via inhibiting the activation of splenic toll-like, C-type lectin-like, and NOD-like receptors signaling (6).

Innate immune PPRs-mediated signaling pathways (including NF- $\kappa$ B and MAPK pathways) are vital in inflammation responses under stressful conditions (5, 10). The present study showed that the RSV supplementation under heat stress significantly down-regulated the *NF- $\kappa$ B*, *ERK*, *I $\kappa$ B- $\alpha$* , *HSP70*, and *p38 MAPK* mRNA levels in the spleen compared with the HT group. LPS and RSV inhibited NF- $\kappa$ B activation and phosphorylation, as well as I $\kappa$ B- $\alpha$  degradation, and reduced nuclear content of NF- $\kappa$ B subunits in cells (60). In *in vitro* study, RSV reduced IL-1 $\beta$  levels and inhibited the NF- $\kappa$ B activation dependent on IL-1 $\beta$  (61, 62). Additionally, researches have shown that RSV may induce apoptosis and ROS accumulation through the p38 MAPK signaling pathway *in vitro* (63, 64). Under mastitis conditions, RSV was able to inhibit the inflammatory response by blocking the phosphorylation protein expression of p65 and I $\kappa$ B from the NF- $\kappa$ B signaling as well as phosphorylation of p38 MAPK and ERK from MAPK signaling (65). Our recent

study also demonstrated that dietary RSV could inhibit NF- $\kappa$ B, MAPK, and PI3K/AKT signaling in broilers under heat stress conditions (6).

A higher level of HSP70 was reported in broilers under high-temperature stresses (5). HSP70 proteins can either activate the inflammatory immune system to fight infection or repress the immune system to prevent excessive inflammation (66, 67). Thus, HSPs were usually used as stress biomarkers to monitor cellular stress (12).

In particular, HSP70 plays a crucial role in preventing apoptotic progression induced by various environmental stresses (68). Apoptosome assembly is also a central step where HSPs can prevent apoptosome formation by selectively binding with Apaf-1 and by interacting with and inhibiting cytochrome c (69–71). Using a cell-free system, HSP70 inhibited cytochrome c/dATP-mediated caspase activation but allowed for the formation of Apaf-1 oligomers. HSP70 binds to Apaf-1 but not to procaspase-9, and suppresses recruitment of caspases to the apoptosome complex (69). Accordingly, the capacity of HSP70 to bind to specific proteins such as Apaf-1 raises its potential to inhibit caspase activation and suppress apoptosis (69). This interaction of apoptosis and cellular-stress responses probably stabilizes cell survival in response to injury.

## CONCLUSIONS

This study showed that heat stress harmed the growth performance and the immune capacity of the spleen in broilers. RSV supplementation had a beneficial effect on white feather broilers' growth performance and anti-inflammatory capacity, suggesting that it might effectively mitigate the deleterious effects of heat stress. RSV could inhibit heat stress-induced activation of splenic NF- $\kappa$ B, MAPK, and HSP70, as well as inhibit the activation of mitochondrial apoptotic pathways, thus reducing the splenic inflammatory response in heat-stressed white-feather broilers.

## REFERENCES

- Lara LJ, Rostagno MH. Impact of heat stress on poultry production. *Animals*. (2013) 3:356–69. doi: 10.3390/ani3020356
- Pech-Waffenschmidt V, Bogin E, Avidar Y, Horst P. Metabolic and biochemical changes during heat stress in relation to the feathering degree of the domestic hen. *Avian Pathol.* (1995) 24:33–44. doi: 10.1080/03079459508419047
- Narinc D, Erdogan S, Tahtabacen E, Aksoy T. Effects of thermal manipulations during embryogenesis of broiler chickens on developmental stability, hatchability and chick quality. *Animal*. (2016) 10:1328–35. doi: 10.1017/S1751731116000276
- He SP, Arowolo MA, Medrano RF, Li S, Yu QF, Chen JY, et al. Impact of heat stress and nutritional interventions on poultry production. *World Poul Sci J.* (2019) 74:647–64. doi: 10.1017/S0043933918000727
- Liu L, Fu C, Yan M, Xie H, Li S, Yu Q, et al. Resveratrol modulates intestinal morphology and HSP70/90, NF- $\kappa$ B and EGF expression in the jejunal mucosa of black-boned chickens on exposure to circular heat stress. *Food Function*. (2016) 7:1329–38. doi: 10.1039/C5FO01338K
- He S, Yu Q, He Y, Hu R, Xia S, He J. Dietary resveratrol supplementation inhibits heat stress-induced high-activated innate immunity and inflammatory response in spleen of yellow-feather broilers. *Poult Sci*. (2019) 98:6378–87. doi: 10.3382/ps/pez471
- de la Lastra CA, Villegas I. Resveratrol as an antioxidant and pro-oxidant agent: mechanisms and clinical implications. *Biochem Soc Trans.* (2007) 35:1156–60. doi: 10.1042/BST0351156
- Meng Q, Guo T, Li G, Sun S, He S, Cheng B, et al. Dietary resveratrol improves antioxidant status of sows and piglets and regulates antioxidant gene expression in placenta by Keap1-Nrf2 pathway and Sirt1. *J Ani Sci Biotechnol.* (2018) 9:1–13. doi: 10.1186/s40104-018-0248-y
- Nunes S, Danesi F, Del Rio D, Silva P. Resveratrol and inflammatory bowel disease: the evidence so far. *Nutr Res Rev.* (2018) 31:85–97. doi: 10.1017/S095442241700021X
- Meng T, Xiao D, Muhammed A, Deng J, Chen L, He J. Anti-inflammatory action and mechanisms of resveratrol. *Molecules*. (2021) 26:229. doi: 10.3390/molecules26010229

## DATA AVAILABILITY STATEMENT

The datasets presented in this study can be found in online repositories. The names of the repository/repositories and accession number(s) can be found below: NCBI PRJNA804649.

## ETHICS STATEMENT

The animal study was reviewed and approved by Institutional Animal Care and Use Committee of the Hunan Agricultural University (permit number: CACAHU 2020-0821).

## AUTHOR CONTRIBUTIONS

TM: conceptualization, methodology, formal analysis, data curation, and writing-original draft preparation. JD: sample collection and software. DX: visualization, investigation, and writing-review and editing. MA: writing-review and editing. CL and SH: conceptualization and methodology. LC and WD: methodology. JH: supervision, writing-reviewing and editing, project administration, and funding acquisition. All authors contributed to the article and approved the submitted version.

## FUNDING

This project was funded by the National Natural Science Foundation of China (31972600 and 31872991), National Natural Science Foundation of Hunan Province-China (2020JJ4364), Project of Science and Technology Department of Hunan Province (2020NK4247), and Double First Class Construction Project of Hunan Agricultural University (kxk201801004).

## ACKNOWLEDGMENTS

We thank Dr. Guan Yang for his linguistic assistance during the preparation of this manuscript.

11. de la Lastra CA, Villegas I. Resveratrol as an anti-inflammatory and anti-aging agent: mechanisms and clinical implications. *Mol Nutr Food Res.* (2005) 49:405–30. doi: 10.1002/mnfr.200500022
12. Liu LL, He JH, Xie HB, Yang YS, Li JC, Zou Y. Resveratrol induces antioxidant and heat shock protein mRNA expression in response to heat stress in black-boned chickens. *Poult Sci.* (2014) 93:54–62. doi: 10.3382/ps.2013-03423
13. He S, Chen L, He Y, Chen F, Ma Y, Xiao D, et al. Resveratrol alleviates heat stress-induced impairment of intestinal morphology, barrier integrity and inflammation in yellow-feather broilers. *Ani Prod Sci.* (2020) 60:1547. doi: 10.1071/AN19218
14. Meng T, Gao L, Xie C, Xiang Y, Huang Y, Zhang Y, et al. Manganese methionine hydroxy analog chelated affects growth performance, trace element deposition and expression of related transporters of broilers. *Ani Nutr.* (2021) 7:481–487. doi: 10.1016/j.aninu.2020.09.005
15. Li G, Xie C, Wang Q, Wan D, Zhang Y, Wu X, et al. Uridine/UMP metabolism and their function on the gut in segregated early weaned piglets. *Food Funct.* (2019) 10:4081–9. doi: 10.1039/C9FO00360F
16. Ning J, Zou D, Lu X, Cao W, Chen M, Liu B, et al. Transcriptomic analyses provide insights into the adaptive responses to heat stress in the ark shells, *scapharca subcrenata*. *Comp Biochem Physiol Part D Genomics Proteomics.* (2021) 38:100813. doi: 10.1016/j.cbd.2021.100813
17. Quinteiro-Filho WM, Calefi AS, Cruz DSG, Aloia TPA, Zager A, Astolfi-Ferreira CS, et al. Heat stress decreases expression of the cytokines, avian beta-defensins 4 and 6 and toll-like receptor 2 in broiler chickens infected with salmonella enteritidis. *Vet Immunol Immunopathol.* (2017) 186:19–28. doi: 10.1016/j.vetimm.2017.02.006
18. Edgar JL, Nicol CJ, Pugh CA, Paul ES. Surface temperature changes in response to handling in domestic chickens. *Physiol Behav.* (2013) 119:195–200. doi: 10.1016/j.physbeh.2013.06.020
19. Cheng YF, Chen YP, Chen R, Su Y, Zhang RQ, He QF, et al. Dietary mannan oligosaccharide ameliorates cyclic heat stress-induced damages on intestinal oxidative status and barrier integrity of broilers. *Poult Sci.* (2019) 98:4767–76. doi: 10.3382/ps/pez192
20. Lu Z, He XF, Ma BB, Zhang L, Li JL, Jiang Y, et al. The alleviative effects and related mechanisms of taurine supplementation on growth performance and carcass characteristics in broilers exposed to chronic heat stress. *Poult Sci.* (2019) 98:878–86. doi: 10.3382/ps/pey433
21. He S, Li S, Arowolo MA, Yu Q, Chen F, Hu R, et al. Effect of resveratrol on growth performance, rectal temperature and serum parameters of yellow-feather broilers under heat stress. *Anim Sci J.* (2019) 90:401–11. doi: 10.1111/asj.13161
22. Habashy WS, Milfort MC, Fuller AL, Attia YA, Rekaya R, Aggrey SE. Effect of heat stress on protein utilization and nutrient transporters in meat-type chickens. *Int J Biometeorol.* (2017) 61:2111–8. doi: 10.1007/s00484-017-1414-1
23. Björntorp P. Do stress reactions cause abdominal obesity comorbidities? *Obesity Rev.* (2001) 2:73–86. doi: 10.1046/j.1467-789x.2001.00027.x
24. Rodrigues-Mascarenhas S, dos Santos NF, Rumjanek VM. Synergistic effect between ouabain and glucocorticoids for the induction of thymic atrophy. *Biosci Rep.* (2006) 26:159–69. doi: 10.1007/s10540-006-9012-1
25. Helmreich DL, Tylee D. Thyroid hormone regulation by stress and behavioral differences in adult male rats. *Horm Behav.* (2011) 60:284–91. doi: 10.1016/j.yhbeh.2011.06.003
26. Kioukia N, Bekris S, Antoniou K, Papadopoulou-Daifoti Z, Christofidis I. Effects of chronic mild stress (CMS) on thyroid hormone function in two rat strains. *Psychoneuroendocrinology.* (2000) 25:247–57. doi: 10.1016/S0306-4530(99)00051-7
27. Sohail MU, Ijaz A, Yousaf MS, Ashraf K, Zaneb H, Aleem M, et al. Alleviation of cyclic heat stress in broilers by dietary supplementation of mannan-oligosaccharide and lactobacillus-based probiotic: dynamics of cortisol, thyroid hormones, cholesterol, C-reactive protein, and humoral immunity. *Poultry Sci.* (2010) 89:1934–8. doi: 10.3382/ps.2010-00751
28. Attia YA, Abd El-Hamid AE-HE, Abedalla AA, Berika MA, Al-Harthi MA, Kucuk O, et al. Laying performance, digestibility and plasma hormones in laying hens exposed to chronic heat stress as affected by betaine, vitamin C, and/or vitamin E supplementation. *Springerplus.* (2016) 5:1–12. doi: 10.1186/s40064-016-3304-0
29. Elnagar SA, Scheideler SE, Beck MM. Reproductive hormones, hepatic deiodinase messenger ribonucleic acid, and vasoactive intestinal polypeptide-immunoreactive cells in hypothalamus in the heat stress-induced or chemically induced hypothyroid laying hen. *Poultry Sci.* (2010) 89:2001–9. doi: 10.3382/ps.2010-00728
30. Guo T-Y, Liu L-J, Xu L-Z, Zhang J-C, Li S-X, Chen C, et al. Alterations of the daily rhythms of HPT axis induced by chronic unpredicted mild stress in rats. *Endocrine.* (2015) 48:637–43. doi: 10.1007/s12020-014-0314-y
31. Zhang C, Zhao X, Wang L, Yang L, Chen X, Geng Z. Resveratrol beneficially affects meat quality of heat-stressed broilers which is associated with changes in muscle antioxidant status. *Ani Sci J.* (2017) 88:1569–74. doi: 10.1111/asj.12812
32. Li YC, Liu YM, Shen JD, Chen JJ, Pei YY, Fang XY. Resveratrol ameliorates the depressive-like behaviors and metabolic abnormalities induced by chronic corticosterone injection. *Molecules.* (2016) 21:1–12. doi: 10.3390/molecules21101341
33. Bagath M, Krishnan G, Devaraj C, Rashamol VP, Pragna P, Lees AM, et al. The impact of heat stress on the immune system in dairy cattle: a review. *Res Vet Sci.* (2019) 126:94–102. doi: 10.1016/j.rvsc.2019.08.011
34. Yun S-H, Moon Y-S, Sohn S-H, Jang I-S. Effects of cyclic heat stress or vitamin c supplementation during cyclic heat stress on hsp70, inflammatory cytokines, and the antioxidant defense system in sprague dawley rats. *Exp Ani.* (2012) 61:543–53. doi: 10.1538/expanim.61.543
35. Xu D, Li W, Huang Y, He J, Tian Y. The effect of selenium and polysaccharide of *Atractylodes macrocephala* Koidz. (PAMK) on immune response in chicken spleen under heat stress. *Biol Trace Elem Res.* (2014) 160:232–7. doi: 10.1007/s12011-014-0056-y
36. Ohtsu H, Yamazaki M, Abe H, Murakami H, Toyomizu M. Heat stress modulates cytokine gene expression in the spleen of broiler chickens. *J Poul Sci.* (2015) 52:282–7. doi: 10.2141/jpsa.0150062
37. Li T, Song Y, Bao X, Zhang J. The mediation of mir-34a/mir-449c for immune cytokines in acute cold/heat-stressed broiler chicken. *Animals.* (2020) 10:1–7. doi: 10.3390/ani10112168
38. Heled Y, Fleischmann C, Epstein Y. Cytokines and their role in hyperthermia and heat stroke. *J Basic Clin Physiol Pharmacol.* (2013) 24:85–96. doi: 10.1515/jbcp-2012-0040
39. Mosmann TR, Sad S. The expanding universe of T-cell subsets th1, th2 and more. *Immunol Today.* (1996) 17:138–46. doi: 10.1016/0167-5699(96)80606-2
40. Xie J, Tang L, Lu L, Zhang L, Lin X, Liu H-C, et al. Effects of acute and chronic heat stress on plasma metabolites, hormones and oxidant status in restrictedly fed broiler breeders. *Poult Sci.* (2015) 94:1635–44. doi: 10.3382/ps/pev105
41. Najjar VA, Nishioka K. “Tuftsin”: a natural phagocytosis stimulating peptide. *Nature.* (1970) 228:672–3. doi: 10.1038/228672a0
42. Trevisani F, Castelli E, Foschi FG, Parazza M, Loggi E, Bertelli M, et al. Impaired tuftsin activity in cirrhosis: relationship with splenic function and clinical outcome. *Gut.* (2002) 50:707–12. doi: 10.1136/gut.50.5.707
43. Hourcade DE. The role of properdin in the assembly of the alternative pathway C3 convertases of complement\*. *J Biol Chem.* (2006) 281:2128–32. doi: 10.1074/jbc.M508928200
44. Kemper C, Hourcade DE. Properdin: new roles in pattern recognition and target clearance. *Mol Immunol.* (2008) 45:4048–56. doi: 10.1016/j.molimm.2008.06.034
45. Chen JY, Cortes C, Ferreira VP. Properdin: a multifaceted molecule involved in inflammation and diseases. *Mol Immunol.* (2018) 102:58–72. doi: 10.1016/j.molimm.2018.05.018
46. Stefanelli VL, Choudhury S, Hu P, Liu Y, Schwenzer A, Yeh CR, et al. Citrullination of fibronectin alters integrin clustering and focal adhesion stability promoting stromal cell invasion. *Matrix Biol.* (2019) 82:86–104. doi: 10.1016/j.matbio.2019.04.002
47. Zhang X-H, Wu H, Tang S, Li Q-N, Xu J, Zhang M, et al. Apoptosis in response to heat stress is positively associated with heat-shock protein 90 expression in chicken myocardial cells in vitro. *J Vet Sci.* (2017) 18:129–40. doi: 10.4142/jvs.2017.18.2.129
48. Li H, Liu Y, Wen M, Zhao F, Zhao Z, Liu Y, et al. Hydroxysafflor yellow A (HSYA) alleviates apoptosis and autophagy of neural stem cells induced by heat stress via p38 MAPK/MK2/Hsp27-78 signaling pathway. *Biomed Pharmacother.* (2019) 114:1–8. doi: 10.1016/j.biopha.2019.108815

49. Wang Y, Yang C, Elsheikh NAH, Li C, Yang F, Wang G, et al. HO-1 reduces heat stress-induced apoptosis in bovine granulosa cells by suppressing oxidative stress. *Aging Us*. (2019) 11:5535–47. doi: 10.18632/aging.102136
50. Gao Z, Liu F, Yin P, Wan C, He S, Liu X, et al. Inhibition of heat-induced apoptosis in rat small intestine and IEC-6 cells through the AKT signaling pathway. *BMC Vet Res*. (2013) 9:1–8. doi: 10.1186/1746-6148-9-241
51. Zhao K, Yang Y, Zhang G, Wang C, Wang D, Wu M, et al. Regulation of the Mdm2-p53 pathway by the ubiquitin E3 ligase MARCH7. *Embo Rep*. (2018) 19:305–19. doi: 10.15252/embr.201744465
52. Zhou M, Yeager AM, Smith SD, Findley HW. Overexpression of the MDM2 gene by childhood acute lymphoblastic leukemia cells expressing the wild-type p53 gene. *Blood*. (1995) 85:1608–14. doi: 10.1182/blood.V85.6.1608.bloodjournal8561608
53. Dai M-S, Shi D, Jin Y, Sun X-X, Zhang Y, Grossman SR, et al. Regulation of the MDM2-p53 pathway by ribosomal protein L11 involves a post-ubiquitination mechanism. *J Biol Chem*. (2006) 281:24304–13. doi: 10.1074/jbc.M602596200
54. Zhang C, Zhao XH, Yang L, Chen XY, Jiang RS, Jin SH, et al. Resveratrol alleviates heat stress-induced impairment of intestinal morphology, microflora, and barrier integrity in broilers. *Poult Sci*. (2017) 96:4325–32. doi: 10.3382/ps/pex266
55. Ibrahim MA, Albahlol IA, Wani FA, Abd-Eltawab Tammam A, Kelleni MT, Sayeed MU, et al. Resveratrol protects against cisplatin-induced ovarian and uterine toxicity in female rats by attenuating oxidative stress, inflammation and apoptosis. *Chem Biol Interact*. (2021) 338:109402. doi: 10.1016/j.cbi.2021.109402
56. Zhu X, Wang F, Lei X, Dong W. Resveratrol alleviates alveolar epithelial cell injury induced by hyperoxia by reducing apoptosis and mitochondrial dysfunction. *Exp Biol Med*. (2021) 246:596–606. doi: 10.1177/1535370220975106
57. Kothakota S, Azuma T, Reinhard C, Klippel A, Tang J, Chu K, et al. Caspase-3-generated fragment of gelsolin: effector of morphological change in apoptosis. *Science*. (1997) 278:294–8. doi: 10.1126/science.278.5336.294
58. Yang J, Liu X, Bhalla K, Kim CN, Ibrado AM, Cai J, et al. Prevention of APOPTOSIS by Bcl-2: release of cytochrome c from mitochondria blocked. *Science*. (1997) 275:1129–32. doi: 10.1126/science.275.5303.1129
59. Scorrano L, Oakes SA, Opferman JT, Cheng EH, Sorcinelli MD, Pozzan T, et al. BAX and BAK regulation of endoplasmic reticulum Ca<sup>2+</sup>: a control point for apoptosis. *Science*. (2003) 300:135–9. doi: 10.1126/science.1081208
60. Tsai SHL-SSY, Lin JK. Suppression of nitric oxide synthase and the down-regulation of the activation of NF-kappa B in macrophages by resveratrol. *Brit J Pharmacol*. (1999) 126:673–80. doi: 10.1038/sj.bjp.0702357
61. Gao X, Xu YX, Janakiraman N, Chapman RA, Gautam SC. Immunomodulatory activity of resveratrol: suppression of lymphocyte proliferation, development of cell-mediated cytotoxicity, and cytokine production. *Biochem Pharmacol*. (2001) 62:1299–308. doi: 10.1016/s0006-2952(01)00775-4
62. Estrov Z, Shishodia S, Faderl S, Harris D, Van Q, Kantarjian HM, et al. Resveratrol blocks interleukin-1beta-induced activation of the nuclear transcription factor NF-kappaB, inhibits proliferation, causes S-phase arrest, and induces apoptosis of acute myeloid leukemia cells. *Blood*. (2003) 102:987–95. doi: 10.1182/blood-2002-11-3550
63. Lou Z, Li X, Zhao X, Du K, Li X, Wang B. Resveratrol attenuates hydrogen peroxide-induced apoptosis, reactive oxygen species generation, and PSGL-1 and VWF activation in human umbilical vein endothelial cells, potentially via MAPK signalling pathways. *Mol Med Rep*. (2018) 17:2479–87. doi: 10.3892/mmr.2017.8124
64. Li C, Hu WL, Lu MX, Xiao GF. Resveratrol induces apoptosis of benign prostatic hyperplasia epithelial cell line (BPH-1) through p38 MAPK-FOXO3a pathway. *BMC Compl Altern Med*. (2019) 19:233. doi: 10.1186/s12906-019-2648-8
65. Zhang X, Wang Y, Xiao C, Wei Z, Wang J, Yang Z, et al. Resveratrol inhibits LPS-induced mice mastitis through attenuating the MAPK and NF-kB signaling pathway. *Microb Pathog*. (2017) 107:462–467. doi: 10.1016/j.micpath.2017.04.002
66. Muralidharan S, Mandrekar P. Cellular stress response and innate immune signaling: integrating pathways in host defense and inflammation. *J Leukocyte Biol*. (2013) 94:1167–84. doi: 10.1189/jlb.0313153
67. Chen B, Feder ME, Kang L. Evolution of heat-shock protein expression underlying adaptive responses to environmental stress. *Mol Ecol*. (2018) 27:3040–54. doi: 10.1111/mec.14769
68. Beere HM. Death versus survival: functional interaction between the apoptotic and stress-inducible heat shock protein pathways. *J Clin Invest*. (2005) 115:2633–9. doi: 10.1172/JCI26471
69. Beere HM, Wolf BB, Cain K, Mosser DD, Mahboubi A, Kuwana T, et al. Heat-shock protein 70 inhibits apoptosis by preventing recruitment of procaspase-9 to the Apaf-1 apoptosome. *Nat Cell Biol*. (2000) 2:469–75. doi: 10.1038/35019501
70. Bruey JM, Ducasse C, Bonniaud P, Ravagnan L, Susin SA, Diaz-Latoud C, et al. Hsp27 negatively regulates cell death by interacting with cytochrome c. *Nat Cell Biol*. (2000) 2:645–52. doi: 10.1038/35023595
71. Pandey P, Saleh A, Nakazawa A, Kumar S, Srinivasula SM, Kumar V, et al. Negative regulation of cytochrome c-mediated oligomerization of Apaf-1 and activation of procaspase-9 by heat shock protein 90. *EMBO J*. (2000) 19:4310–22. doi: 10.1093/emboj/19.16.4310

**Conflict of Interest:** The authors declare that the research was conducted in the absence of any commercial or financial relationships that could be construed as a potential conflict of interest.

**Publisher's Note:** All claims expressed in this article are solely those of the authors and do not necessarily represent those of their affiliated organizations, or those of the publisher, the editors and the reviewers. Any product that may be evaluated in this article, or claim that may be made by its manufacturer, is not guaranteed or endorsed by the publisher.

Copyright © 2022 Meng, Deng, Xiao, Arowolo, Liu, Chen, Deng, He and He. This is an open-access article distributed under the terms of the Creative Commons Attribution License (CC BY). The use, distribution or reproduction in other forums is permitted, provided the original author(s) and the copyright owner(s) are credited and that the original publication in this journal is cited, in accordance with accepted academic practice. No use, distribution or reproduction is permitted which does not comply with these terms.