



OPEN ACCESS

EDITED BY

Xiaoran Liu,
Rush University Medical Center,
United States

REVIEWED BY

Kan Xie,
German Center
for Neurodegeneratives, Helmholtz
Association of German Research
Centers (HZ), Germany
Sook Yee Lim,
UCSI University, Malaysia

*CORRESPONDENCE

Jianfeng Luo
jfluo@shmu.edu.cn
Ding Ding
dingding@huashan.org.cn

SPECIALTY SECTION

This article was submitted to
Nutrition, Psychology and Brain
Health,
a section of the journal
Frontiers in Nutrition

RECEIVED 05 September 2022

ACCEPTED 09 November 2022

PUBLISHED 23 November 2022

CITATION

Liu S, Luo J, Xiao Z, Wu W, Liang X,
Ding S, Zhao Q, Zhao X, Wang Y and
Ding D (2022) Low dietary vitamin E
intake is associated with high risk
of incident dementia among older
adults: The Shanghai Aging Study.
Front. Nutr. 9:1036795.
doi: 10.3389/fnut.2022.1036795

COPYRIGHT

© 2022 Liu, Luo, Xiao, Wu, Liang, Ding,
Zhao, Zhao, Wang and Ding. This is an
open-access article distributed under
the terms of the [Creative Commons
Attribution License \(CC BY\)](https://creativecommons.org/licenses/by/4.0/). The use,
distribution or reproduction in other
forums is permitted, provided the
original author(s) and the copyright
owner(s) are credited and that the
original publication in this journal is
cited, in accordance with accepted
academic practice. No use, distribution
or reproduction is permitted which
does not comply with these terms.

Low dietary vitamin E intake is associated with high risk of incident dementia among older adults: The Shanghai Aging Study

Su Liu^{1,2}, Jianfeng Luo^{1,2*}, Zhenxu Xiao^{3,4,5}, Wanqing Wu^{3,4,5},
Xiaoniu Liang^{3,4,5}, Saineng Ding^{3,4,5}, Qianhua Zhao^{3,4,5},
Xianfeng Zhao⁶, Yi Wang⁶ and Ding Ding^{3,4,5*}

¹Department of Biostatistics, School of Public Health, Fudan University, Shanghai, China, ²NHC Key Laboratory of Health Technology Assessment, Fudan University, Shanghai, China, ³Institute of Neurology, Huashan Hospital, Fudan University, Shanghai, China, ⁴National Center for Neurological Disorders, Huashan Hospital, Fudan University, Shanghai, China, ⁵National Clinical Research Center for Aging and Medicine, Huashan Hospital, Fudan University, Shanghai, China, ⁶Danone Open Science Research Center for Life-Transforming Nutrition, Shanghai, China

Background: Growing evidence has shown the association between vitamin E intake and the risk of cognitive decline, but the conclusions were inconsistent. This study aimed to verify the hypothesis that vitamin E intake is associated with incident dementia and deterioration of global cognition.

Materials and methods: We followed 1,550 non-demented community residents aged ≥ 60 years for an average of 5.2 years in the Shanghai Aging Study. Baseline vitamin E intake were measured by the Food Frequency Questionnaire. Cognitive function was evaluated by a battery of neuropsychological tests. Consensus diagnosis of incident dementia was made based on the DSM-IV criteria.

Results: During the follow-up, 135 cases (8.7%) of incident dementia were identified. The incidence rates of dementia in low, low-medium, medium-high, and high vitamin E intake groups were 2.8, 1.5, 1.6, and 0.7 per 100 person-years, respectively ($P < 0.001$). Participants with low vitamin E intake had a significantly higher risk of incident dementia than those with higher intake [compared with the highest intake group: hazard ratio (HR) 2.34, 95% confidence interval (CI) 1.20–4.57] after adjusting for confounders. Vitamin E intake was negatively correlated to the rate of annual decline of Mini-Mental State Examination score with the adjustment of confounders ($\beta = 0.019$, $p = 0.001$).

Conclusion: Vitamin E intake is negatively correlated with the risk of dementia in older adults. An appropriate high amount of vitamin E intake from the diet might be helpful to prevent future cognitive decline.

KEYWORDS

dementia, vitamin E, cognition, cohort study, risk

Introduction

Dementia, a degenerative brain disease with symptoms, such as memory loss, language problems, and functional impairment, is a leading cause of disability in people older than 5 years (1). This disease is considered to start 20 years or more before the onset of symptoms, and the changes in the brain of patients in years are imperceptible (2–6). About 50 million people worldwide suffer from dementia, and this number is expected to increase to 152 million by 2050 (7). Disease burden of dementia is extremely high, especially in low-and middle-income countries (LMICs), where about two-thirds of people with dementia live (7). Dementia poses a huge challenge for policy makers, healthcare professionals, and family members (1).

Multiple mechanisms associated with disease onset and progression have been reported. One key mechanism implicated in dementia is oxidative stress, which may be modifiable through balanced diet and/or anti-oxidant supplements. The tocopherol and tocotrienol isoforms of vitamin E have multiple properties including potent anti-oxidant and anti-inflammatory characteristics, in addition to influences on immune function, cellular signaling and cholesterol lowering (8), which offer a potential theoretical rationale for providing benefit for the treatment of Alzheimer's disease (AD)-associated pathology (9, 10). Decreased concentrations of vitamin E in circulation have been found in individuals with AD. Vitamin E intake, particularly from dietary sources, may slow the progression of cognitive impairment (11). However, some studies indicate that vitamin E does not play a significant role in the prevention and treatment of AD (12, 13). And it may be related to the different research methods and the dose of vitamin E intake. Therefore the conclusions about vitamin E and dementia were inconsistent. Currently, studies investigating the association between dietary vitamin E intake and the incidence of dementia mostly come from western populations. Prospective community-based studies are limited in Asian population to understand such an association.

The "Shanghai Aging Study" is a population-based cohort study conducted in China with the study design, operational procedures and diagnostic criteria similar to most cohort studies of memory in western countries (14). The current study intended to explore the relationship between dietary vitamin E intake and dementia risk by analyzing the data from baseline and the 5-year follow-up in the Shanghai Aging Study.

Materials and methods

Study participants

Participants aged 60 or older were recruited from an urban community of Shanghai, China in 2010–2011. We recruited

participants who were permanent residents in the community, not living in nursing homes or other institutions, and could cooperate with the neuropsychological evaluation. Those suffering from mental retardation, schizophrenia and severe impairment in hearing, vision, or language were excluded. The current study included those dementia-free participants who provided the dietary data at baseline and completed the follow-up interview.

This study was approved by the Medical Ethics Committee of Huashan Hospital, Fudan University, Shanghai, China (No. 2009-195). All the participants and/or their legal guardians provided written informed consent to participate in the study.

Measurement of consumption of nutrients

At baseline, daily dietary intake including frequency and amount over the past 12 months was measured for each participant using a 111-item interviewer-administered food frequency questionnaire (FFQ), which has been previously validated in Chinese population (15, 16). The FFQ include 81 groups of foods in 8 categories, such as staple food and animal meat. The FFQ also readjusted to suit the local diet in Shanghai, China, such as soy foods, fermented foods, salted foods, allium vegetables, and leafy vegetables. The recall period for FFQ was the past 12 months before the survey. Average daily intakes of dietary vitamin E, consumption of other major nutrients, and energy were calculated based on data from the FFQ and the "China Food Composition, 2nd Edition" (17).

Neurological, neuropsychological assessments, and consensus diagnosis

Neurological examinations, Clinical Dementia Rating (CDR) (18), Lawton and Brody Activity of Daily Living (ADL) scale (19), neuropsychological assessments, and consensus diagnoses were conducted for all the participants both at baseline and the follow-up.

Neuropsychological tests covered the domains of global cognition, executive function, spatial construction, memory, language, and attention, including: (1) Mini-Mental State Examination (20); (2) Conflicting Instructions Task (Go/No Go Task) (21); (3) Stick Test (22); (4) Modified Common Objects Sorting Test (22); (5) Auditory Verbal Learning Test (23); (6) Modified Fuld Object Memory Evaluation (24); (7) Trail-making tests A and B (25); (8) RMB (Chinese currency) test (26). All the tests were administered by study psychometrists based on the education level of each participant: Tests (1) to (5) and (7) were used for participants with at least 6 years of education, while tests (1) to (4), (6) and (8) were used for those with less than 6 years of education (27). Normative data and a detailed

description of these tests have been reported elsewhere (27, 28). All tests were conducted in Chinese within 90 min. Consensus diagnosis of dementia was reached based on the DSM-IV criteria by a professional group with the neurologist, neuropsychologist and neuroepidemiologist.

Confounding factors

At baseline, we obtained a group of potential confounders related to diet and cognition, i.e., age, gender, education year, physical activity, cognitive activity, alcohol drinking, and cigarette smoking status were collected by an interviewer-administered questionnaire. Smoking or drinking was defined as whether the participant was a current smoker or drinker (14). Cognitive activity was assessed using Shanghai Cognitive Activities Scale. Physical activity was determined based on questionnaires and further transformed into metabolic equivalent values (29).

Body-mass index (BMI) was calculated by the body weight in kilograms divided by the squared height in meter. Depressive symptoms within the past week were assessed by the Center for Epidemiologic Studies Depression Scale (CES-D) (27). DNA was extracted from blood or saliva samples of participants. We used the Taqman SNP method (30) to conduct the APOE genotyping. APOE- ϵ 4 positive was defined as the presence of at least one ϵ 4 allele.

Follow-up procedure

From 1 April 2014, to 31 December 2016, dementia-free participants at baseline were contacted and invited for follow-up interviews. A face-to-face neurological and neuropsychological assessment was conducted using the same procedure as the baseline. New-onset dementia cases were determined by the consensus diagnosis with the same method and criteria at the baseline.

Statistical analysis

Continuous variables were expressed as the mean and standard deviation (SD), and categorical variables were expressed as number and frequencies (%). The Student's *t*-test, Wilcoxon rank-sum test, Pearson Chi-square test, and Fisher's exact test were used to compare continuous and categorical variables. Incidence rate of dementia was calculated as the number of new-onset cases divided by the total person-years of follow-up. The Kaplan–Meier curve was performed for the cumulative incidence rate of dementia by follow-up time.

The quartile of the vitamin E intake was used as the cut-off points to categorize the study participants into four groups of

vitamin E intake: low intake group (<13.20 mg/d); low-medium intake group (13.20~17.54 mg/d); medium-high intake group (17.54~23.63 mg/d); and high intake group (>23.63 mg/d). Multivariate Cox regression model was used to estimate the HR (95% CI) of the association between baseline daily intake of vitamin E and incidence of dementia by 4 vitamin E intake groups. Model 1 was adjusted for age, gender, smoking, drinking, years of education, APOE, physics activity, cognitive activity, BMI and CESD, and model 2 was further adjusted for total energy intake.

The “rate of annual decline of MMSE score,” which indicates the deterioration speed of global cognitive function across the follow-up period, was calculated as the difference of MMSE scores (the baseline MMSE minus the follow-up MMSE) divided by follow-up years. Multivariate linear regression model was used to examine the correlation of the rate of annual decline of MMSE with vitamin E intake, adjusting for age, gender, smoking, drinking, years of education, APOE, physics activity, cognitive activity, BMI, CESD, and total energy intake. Residual plots were used to check the linearity assumption of the linear regression models.

R 4.1.2 and SPSS 25 statistical software were used for data analysis. All *P*-values and 95% CI were two-sided. *P* < 0.05 was considered as the difference or association was statistically significant.

Results

As shown in **Table 1**, 1,550 participants were followed up for average 5.2 (SD 0.9) years (8111.3 person-years). The average age of the participants was 71.05 years, and 53.8% of the participants were female. The average daily intake of vitamin E of the participants was 17.54 mg/d, which was closed to the dietary reference intakes (DRIs) for Chinese population (31). At baseline, age, gender, cigarette smoking, years of education, physical activity, cognitive activity, BMI, and CESD were significantly different in four vitamin E intake groups. During the follow-up, 135 (8.7%) participants developed dementia, and the average annual decline rate of MMSE was 0.35 (SD 1.0) in all participants. The rates of incident dementia and the annual decline rates of MMSE were also significantly different among the four groups (*P* < 0.001).

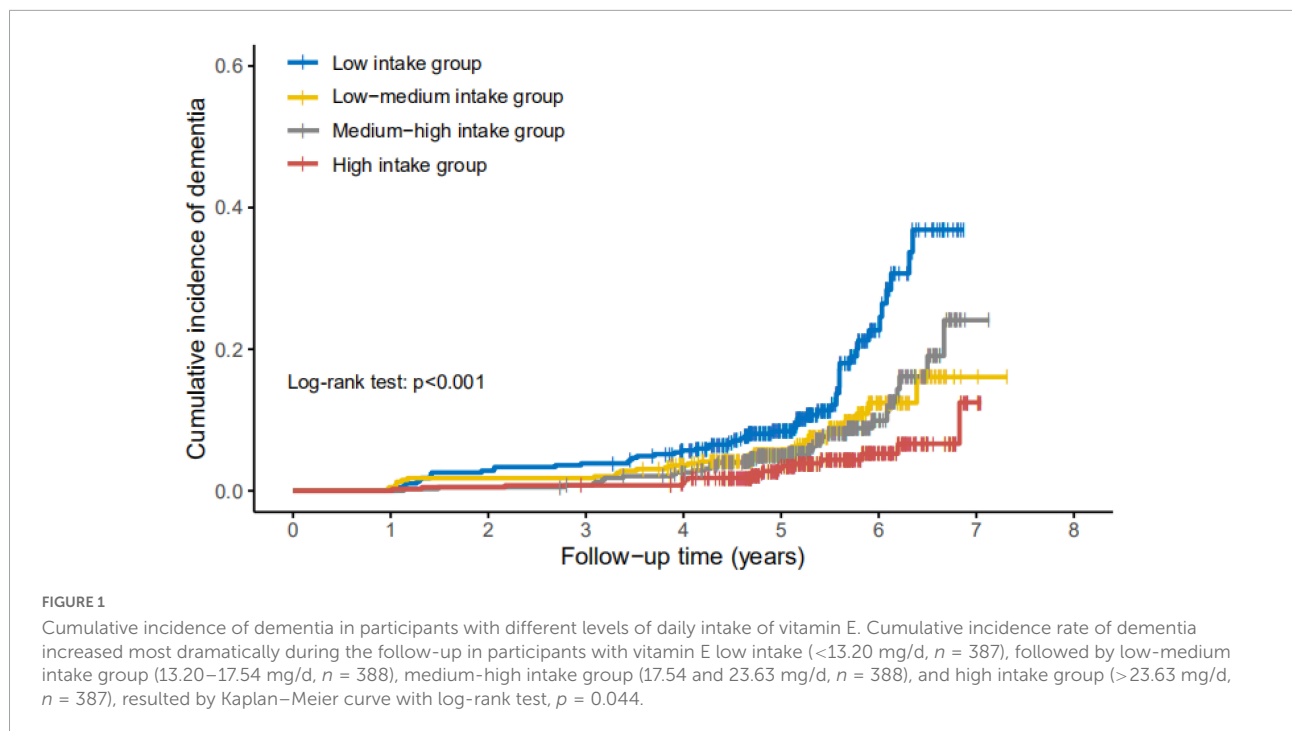
Cumulative incidence rate of dementia increased most dramatically during the follow-up in participants with vitamin E low intake (<13.20 mg/d), followed by low-medium intake, high-medium intake, and high intake groups (log-rank test, *p* = 0.044) (**Figure 1**).

As shown in **Table 2**, compared to participants with high vitamin E intake (>23.63 mg/d), the estimated HRs of incident dementia in low intake, low-medium intake, and medium-high intake groups were 2.31 (95% CI 2.20–4.13), 1.80 (95% CI 0.98–3.32), and 1.75 (95% CI 0.95–3.21), respectively, adjusting

TABLE 1 Characteristics of participants by groups of vitamin E intake.

	Total (n = 1550)	Low intake (<13.20 mg/d) (n = 387)	Low-medium intake (13.20~17.54 mg/d) (n = 388)	Medium-high intake (17.54~23.63 mg/d) (n = 388)	High intake (> 23.63 mg/d) (n = 387)	P-value*
<i>Baseline</i>						
Age, mean (SD)	71.05 (7.1)	73.66 (7.5)	71.11 (6.8)	70.88 (7.0)	68.56 (6.1)	<0.001
Sex, female, n (%)	834 (53.8)	233 (60.2)	218 (51.2)	205 (52.8)	178 (46.0)	0.001
Cigarette smoking, n (%)	164 (10.6)	36 (9.3)	31 (8.0)	45 (11.6)	52 (13.5)	0.065
Alcohol drinking, n (%)	143 (9.2)	30 (7.8)	38 (9.9)	36 (9.3)	39 (10.1)	0.697
Education year, mean (SD)	11.94 (4.0)	11.00 (4.5)	11.94 (4.0)	12.19 (3.9)	12.63 (3.5)	<0.001
APOE ε4+, n (%)	259 (16.7)	62 (16.0)	68 (17.5)	60 (15.5)	69 (17.8)	0.777
Physical activity (METs), mean (SD)	25.73 (24.9)	21.49 (22.5)	25.35 (23.4)	25.29 (26.9)	30.80 (25.9)	<0.001
Cognitive activity, mean (SD)	39.42 (12.0)	34.98 (11.9)	38.98 (11.7)	40.68 (12.0)	43.09 (11.1)	<0.001
BMI, mean (SD)	24.67 (3.5)	24.15 (3.6)	24.51 (3.3)	25.07 (3.5)	24.95 (3.4)	0.001
CESD, mean (SD)	7.88 (7.8)	8.70 (8.2)	7.99 (7.9)	7.51 (7.3)	7.33 (7.7)	0.068
Total energy intake, kcal/d, mean (SD)	1254.93 (685.0)	896.25 (230.8)	1121.20 (261.7)	1275.55 (323.0)	1727.85 (1133.6)	<0.001
Polyunsaturated fatty acid intake, g/d, mean (SD)	5.36 (7.5)	2.91 (1.2)	4.22 (1.5)	5.17 (1.8)	9.15 (14.1)	<0.001
Carotene intake, μg/d, mean (SD)	2973.49 (2206.7)	2035.96 (940.1)	2619.31 (1211.8)	2981.80 (1423.9)	4259.68 (3533.9)	<0.001
Vitamin C intake, mg/d, mean (SD)	94.50 (61.5)	61.83 (26.7)	80.42 (23.8)	93.88 (29.1)	141.98 (97.5)	<0.001
<i>Follow-up</i>						
Incident dementia cases, n (%)	135 (8.7)	55 (14.2)	30 (7.7)	33 (8.5)	17 (4.4)	<0.001
Rate of annual MMSE decline, mean (SD)	0.35 (1.0)	0.53 (1.5)	0.31 (1.0)	0.34 (0.8)	0.21 (0.6)	<0.001

*Comparison among the four groups; APOE, apolipoprotein E; BMI, Body mass index; CESD, Center for Epidemiologic Studies Depression Scale.



for age, gender, drinking, smoking, years of education, APOE, physical activity, cognitive activity, BMI, and CESD. Low vitamin E intake group still showed significantly higher risk of incident dementia (HR 2.34, 95% CI 1.20–4.57) after further adjustment of total energy intake.

Vitamin E intake was negatively correlated to the deterioration speed of global cognition represented as the rate of annual decline of MMSE, after adjusted for age, gender, smoking, drinking, years of education, APOE, physics activity, cognitive activity, BMI, CESD, and total energy intake ($\beta = 0.019$, $p = 0.001$) (Figure 2).

Discussion

Our study found a negative association between dietary vitamin E intake and risk of incident all-cause dementia, and it was also negatively correlated to the rate of annual decline of MMSE after controlling for confounders. To our knowledge, this is the first prospective community-based study with the evidence of the association between dietary vitamin E intake and risk of cognitive decline among Chinese older adults. The strengths of our study were the long-term prospective study design, and the consensus diagnosis based on a comprehensive evaluation including neurological examination, functional evaluation, and neuropsychological assessment.

Our findings are consistent with that from the Memory and Aging Project, in which a cohort of 960 participants aged 58–99 years completed a FFQ and ≥ 2 cognitive assessments over a mean 4.7 years. It was found that consumption of approximately

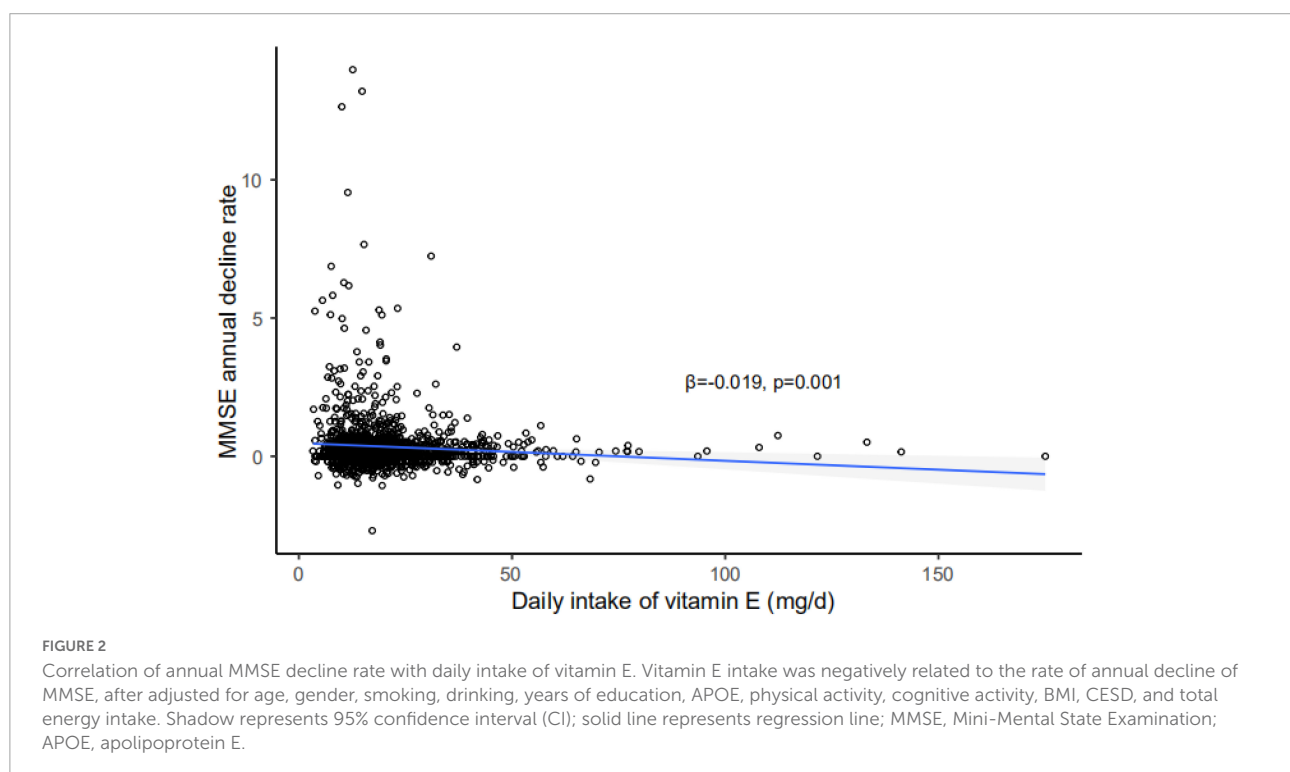
1 serving per day of α -tocopherol (from 4.3 to 8.1 mg/d) may slow cognitive decline with aging ($\beta = 0.03$, $p = 0.020$) (32). Several previous studies reported the association between blood concentration of vitamin E and cognitive impairment. A meta analysis (33) including 904 AD patients and 1,153 controls found that AD patients had a lower concentration of serum vitamin E than that of healthy controls. The Cardiovascular Risk Factors, Aging, and Dementia (CAIDE) in Finland (34) followed 140 non-cognitively impaired older participants for 8 years, and showed that lower risk of cognitive impairment in those with higher levels of γ -tocopherol, β -tocotrienol, and total tocotrienols. The InCHIANTI study (35) examined a cohort of 1,033 participants aged at least 65 years, and found that participants with plasma vitamin E levels in the bottom tertile had a significantly higher probability of being demented [odds ratio (OR) 2.6, 95% CI 1.0–7.1], and also of suffering from cognitive impairment (OR 2.2, 95% CI 1.2–4.2) compared to those in the highest vitamin E tertile.

The effect of vitamin E supplements was also reported previously. The Canadian Study (36) of Health and Aging, in which the data set included 5,269 individuals indicated that, compared with those not taking vitamin supplements, the adjusted hazard ratios of cognitive impairment no dementia, AD, and all-cause dementia were, 0.77 (95% CI 0.60–0.98), 0.60 (95% CI 0.42–0.86), and 0.62 (95% CI 0.46–0.83), respectively, for those taking vitamin E and/or C supplements. In the Honolulu-Asia Aging Study (37) which included 3,385 men aged 71–93 years, a significant protective effect was found for vascular dementia who had reported taking both vitamin

TABLE 2 Association between vitamin E intake level and risk of dementia.

Vitamin E intake level	Person-years	Incidence, per 100 person-years	Model 1*		Model 2**	
			HR (95% CI)	P-value	HR (95% CI)	P-value
Low intake group (<13.20 mg/d)	1955.3	2.8	2.31 (2.20, 4.13)	0.005	2.34 (1.20, 4.57)	0.013
Low-medium intake group (13.20~17.54 mg/d)	1990.5	1.5	1.80 (0.98, 3.32)	0.059	1.67 (0.86, 3.25)	0.130
Medium-high intake group (17.54~23.63 mg/d)	2066.7	1.6	1.75 (0.95, 3.21)	0.072	1.84 (0.99, 3.41)	0.054
High intake group (>23.63 mg/d)	2098.8	0.7	1		1	

*Multivariate Cox regression model 1, adjusting for age, gender, smoking, drinking, years of education, APOE, physics activity, cognitive activity, BMI, and CESD. **Multivariate Cox regression model 2, adjusting for total energy intake, age, gender, smoking, drinking, years of education, APOE, physics activity, cognitive activity, BMI, and CESD.



E and C supplements in 1988 (OR 0.12; 95% CI 0.02–0.88). They were also protected against mixed/other dementia (OR 0.31; 95% CI 0.11–0.89). Among those without dementia, use of either vitamin E or C supplements alone in 1988 was associated significantly with better cognitive test performance 3–5 years later (OR 1.25; 95% CI 1.04–1.50). However, the Prevention of Alzheimer's Disease by Vitamin E and Selenium (PREADViSE) trial (38) (HR 0.88, 95% CI 0.64–1.20) and the Adult Changes in Thought study (HR 0.93, 95% CI 0.72–1.20) (39) did not find the significant protective effect of vitamin E supplement for dementia.

In our study, we chose the dietary as the main approach to calculate the amount of daily vitamin E intake. Some studies

believe that vitamin E does not play a significant role in the prevention and treatment of AD (12, 13). That may be due to the bioavailability of vitamin E, which is complex, can be influenced by some important factors, such as the intake of competing nutrients, intestinal differences in absorption, age, gender, smoking, obesity, and genetic polymorphisms (40).

Vitamin E has a strong anti-oxidant function. Each of the eight tocopherols and tocopherol homologs is considered to be a free radical scavenger (41). The anti-oxidant function is due to the inhibition of free radicals by hydroxyl groups in the aromatic ring of tocopherol through hydrogen atom donors (42). The anti-oxidant function of vitamin E can protect the cell membrane from oxidative damage when it is rich in highly

unsaturated fatty acids, so it plays a key role in protecting the cell membrane (43). In addition to anti-oxidant effects, vitamin E also has the characteristics of affecting gene expression, potential pathological effects of AD, and other neuroprotective, anti-inflammatory, and cholesterol lowering (44). Several studies have shown that Vitamin E supplementation has beneficial effects on various markers of human inflammatory stress, cellular signal, and immune function, and has an impact on related pathology (45, 46). Studies on mouse AD models have identified the association between Vitamin E deficiency and increased expression of genes related to AD progression, including apoptosis, neurotransmission and $\alpha\beta$ Genes related to metabolic regulation (47).

There are several limitations in this study. Firstly, we studied the association between vitamin E daily intake level and risk of “all-cause dementia,” not specific types of dementia because further CT/MRI/PET scans and cerebrospinal fluid biomarkers examinations could not be conducted according to the limited funding. It may restrain the significance of the finding in the prevention of specific types of dementia. Secondly, during the follow-up period, the environment of the participants and the occurrence of other diseases may have an impact on the association. Thirdly, we only collected the FFQ at the baseline and used the baseline dietary intake data as the exposure because we think the dietary habits of older participants were relatively stable across the follow-up time. However, the potential change in dietary habits may exist and should be considered during the follow-up. Fourthly, although the multivariate analysis was used to adjust factors such as age, gender, smoking, drinking, years of education, APOE, physics activity, cognitive activity, BMI, and CESD, the impact of other confounders on the incidence of dementia cannot be completely excluded. Other confounders like anti-oxidant nutrients and anti-inflammation nutrient cannot be included in the analysis model because of the limited sample size. However, we analyzed the association between carotene/ polyunsaturated fatty acid /vitamin C and incident dementia adjusting for age, sex, education years, and APOE, and found that higher vitamin C intake was associated with lower dementia risk. These preliminary results suggest that anti-oxidant nutrients may be one of the important related factors that should be further considered. We did not control for the intake of compounds that could potentially interfere with the bioavailability, absorption and/or metabolic turnover of vitamin E which may also affect the estimation of the associations. Fifthly, although the current study excluded individuals with dementia in order to obtain the dietary data as accurately as possible, the recall bias might still have occurred among those with mild cognitive impairment (approximately 20%). However, this may be less vulnerable to influence the results. Finally, there is a potential representative bias of our study samples because we selected a cohort of older adults with an average age of 70 years old and living in downtown Shanghai, the largest and

most developed city in China. Therefore, our results may not be generalized to other populations.

In conclusion, our study found that vitamin E intake was negatively correlated with the risk of incident dementia. Our results suggest that, in the older population, an appropriate high amount of vitamin E intake from the diet might be helpful to prevent future cognitive decline. Prospective studies with larger sample size, longer follow-up, multi-dimensional measurement of vitamin E concentration in human body, i.e., intake level and blood concentration, should be carried out to further understand the impact of vitamin E on the risk of cognitive impairment in the older adults.

Data availability statement

The data in the current study are available from the corresponding author on reasonable request and with permission of Huashan Hospital. Requests to access the datasets should be directed to DD, dding99@yahoo.com.

Ethics statement

The studies involving human participants were reviewed and approved by the Medical Ethics Committee of Huashan Hospital at Fudan University (No. 2009-195). The patients/participants provided their written informed consent to participate in this study.

Author contributions

JL and DD: study conception and design. QZ, ZX, and DD: clinical diagnosis and interpretation of the data. SL, JL, WW, XZ, SD, YW, and DD: acquisition, analysis, or interpretation of data. SL, XL, and JL: statistical analysis. SL, JL, and DD: manuscript drafting. QZ and DD: critical revision and commentary on manuscript. All authors read and approved the final manuscript.

Funding

This study was supported by the Nutrition and Foods Branch of China Association of Gerontology and Geriatrics, Shanghai Municipal Science and Technology Major Project (2018SHZDZX01) and ZJ LAB, National Natural Science Foundation of China (82173599, 81773513, and 82071200), Key Project of the Ministry of Science and Technology, China (2020YFC2005003 and 2021YFE0111800), Shanghai Hospital

Development Center (SHDC2020CR4007), and MOE Frontiers Center for Brain Science (JH2642001/028).

Conflict of interest

The authors declare that the research was conducted in the absence of any commercial or financial relationships that could be construed as a potential conflict of interest.

References

- Jia J, Wang F, Wei C, Zhou A, Jia X, Li F, et al. The prevalence of dementia in urban and rural areas of China. *Alzheimers Dement.* (2014) 10:1–9. doi: 10.1016/j.jalz.2013.01.012
- Villemagne VL, Burnham S, Bourgeat P, Brown B, Ellis KA, Salvado O, et al. Amyloid beta deposition, neurodegeneration, and cognitive decline in sporadic Alzheimer's disease: a prospective cohort study. *Lancet Neurol.* (2013) 12:357–67. doi: 10.1016/S1474-4422(13)70044-9
- Reiman EM, Quiroz YT, Fleisher AS, Chen K, Velez-Pardo C, Jimenez-Del-Rio M, et al. Brain imaging and fluid biomarker analysis in young adults at genetic risk for autosomal dominant Alzheimer's disease in the presenilin 1 E280A kindred: a case-control study. *Lancet Neurol.* (2012) 11:1048–56. doi: 10.1016/S1474-4422(12)70228-4
- Jack CJ, Lowe VJ, Weigand SD, Wiste HJ, Senjem ML, Knopman DS, et al. Serial PIB and MRI in normal, mild cognitive impairment and Alzheimer's disease: implications for sequence of pathological events in Alzheimer's disease. *Brain.* (2009) 132(Pt 5):1355–65. doi: 10.1093/brain/awp062
- Gordon BA, Blazey TM, Su Y, Hari-Raj A, Dincer A, Flores S, et al. Spatial patterns of neuroimaging biomarker change in individuals from families with autosomal dominant Alzheimer's disease: a longitudinal study. *Lancet Neurol.* (2018) 17:241–50.
- Bateman RJ, Xiong C, Benzinger TL, Fagan AM, Goate A, Fox NC, et al. Clinical and biomarker changes in dominantly inherited Alzheimer's disease. *N Engl J Med.* (2012) 367:795–804. doi: 10.1056/NEJMoa1202753
- Livingston G, Huntley J, Sommerlad A, Ames D, Ballard C, Banerjee S, et al. Dementia prevention, intervention, and care: 2020 report of the Lancet Commission. *Lancet.* (2020) 396:413–46. doi: 10.1016/S0140-6736(20)30367-6
- Nicolas F, David L, Nasr IMG, Naji T. Vitamin E for Alzheimer's dementia and mild cognitive impairment. *Cochrane Database Syst Rev.* (2017) 2017:CD002854.
- Petersen R, Grundman M, Thomas R, Thal L. Donepezil and vitamin E as treatments for mild cognitive impairment. *Neurobiol Aging.* (2004) 25:S20. doi: 10.1016/S0197-4580(04)80064-2
- Dysken MW, Guarino PD, Vertrees JE, Asthana S, Sano M, Llorente M, et al. Vitamin E and memantine in Alzheimer's disease: clinical trial methods and baseline data. *Alzheimer's Dement J Alzheimer's Assoc.* (2014) 10:36–44.
- Yuan L, Liu J, Ma W, Dong L, Wang W, Che R, et al. Dietary pattern and anti-oxidants in plasma and erythrocyte in patients with mild cognitive impairment from China. *Nutrition.* (2016) 32:193–8. doi: 10.1016/j.nut.2015.08.004
- Petersen RC, Thomas RG, Grundman M, Bennett D, Doody R, Ferris S, et al. Vitamin E and donepezil for the treatment of mild cognitive impairment. *N Engl J Med.* (2005) 352:2379–88. doi: 10.1056/NEJMoa050151
- Sano M, Ernesto C, Thomas RG, Klauber MR, Schafer K, Grundman M, et al. A controlled trial of selegiline, alpha-tocopherol, or both as treatment for Alzheimer's disease. Alzheimer's Disease Cooperative Study. *N Engl J Med.* (1997) 336:1216–22. doi: 10.1056/NEJM199704243361704
- Ding D, Qianhua Z, Qihao G, Haijiao M, Bei W, Peimin Y, et al. The Shanghai Aging Study: study design, baseline characteristics, and prevalence of dementia. *Neuroepidemiology.* (2014) 43:114–22. doi: 10.1159/000366163
- Dai Q, Shu XO, Jin F, Potter JD, Kushi LH, Teas J, et al. Population-based case-control study of soyfood intake and breast cancer risk in Shanghai. *Br J Cancer.* (2001) 85:372–8. doi: 10.1054/bjoc.2001.1873
- Shu XO, Yang G, Jin F, Liu D, Kushi L, Wen W, et al. Validity and reproducibility of the food frequency questionnaire used in the Shanghai Women's Health Study. *Eur J Clin Nutr.* (2004) 58:17–23. doi: 10.1038/sj.ejcn.1601738
- Yang YX, Wang GY, Pan XC. *China Food Composition*. 2nd ed. Beijing: Peking University Medical Press (2009).
- Lim WS, Chong MS, Sahadevan S. Utility of the clinical dementia rating in Asian populations. *Clin Med Res.* (2007) 5:61–70. doi: 10.3121/cmr.2007.693
- Lawton MP, Brody EM. Assessment of older people: self-maintaining and instrumental activities of daily living. *Gerontologist.* (1969) 9:179–86. doi: 10.1093/geront/9.3_Part_1.179
- Zhang MY, Katzman R, Salmon D, Jin H, Cai GJ, Wang ZY, et al. The prevalence of dementia and Alzheimer's disease in Shanghai, China: impact of age, gender, and education. *Ann Neurol Off J Am Neurol Assoc Child Neurol Soc.* (1990) 27:428–37. doi: 10.1002/ana.410270412
- Dubois B, Slachevsky A, Litvan I, Pillon B. The FAB: a frontal assessment battery at bedside. *Neurology.* (2000) 55:1621–6. doi: 10.1212/WNL.55.11.1621
- Kapur N. Neuropsychological assessment. Fourth edition. *J Neurol.* (2005) 10:1290. doi: 10.1007/s00415-005-0003-0
- Guo Q, Zhao Q, Chen M, Ding D, Hong Z. A comparison study of mild cognitive impairment with 3 memory tests among Chinese individuals. *Alzheimer Dis Assoc Disord.* (2009) 23:253–9. doi: 10.1097/WAD.0b013e3181999e92
- Bellur SN, Chandra V, McDonald LW. Association of meningiomas with extraneural primary malignancy. *Neurology.* (1979) 29:1165–8. doi: 10.1212/WNL.29.8.1165
- Zhen H. Trail making test used by chinese elderly patients with mild cognitive impairment and mild Alzheimer' dementia. *Chin J Clin Psychol.* (2006) 14:118.
- Carnero-Pardo C, Gurpegui M, Sanchez-Cantalejo E, Frank A, Mola S, Barquero MS, et al. Diagnostic accuracy of the Eurotest for dementia: a naturalistic, multicenter phase II study. *BMC Neurol.* (2006) 6:15. doi: 10.1186/1471-2377-6-15
- Zhang J, Lamis DA, Yuanyuan K. Measuring Chinese psychological traits and social support with Western developed instruments in psychological autopsy studies. *J Clin Psychol.* (2012) 68:1313–21. doi: 10.1002/jclp.21907
- Petersson SD, Philippou E. Mediterranean diet, cognitive function, and dementia: a systematic review of the evidence. *Adv Nutr.* (2016) 7:889–904. doi: 10.3945/an.116.012138
- Wu W, Zhao Q, Xiao Z, Liang X, Luo J, Ding D. Association of combined engagement in cognitive and physical activity with domain-specific cognitive function: the Shanghai aging study. *Int J Geriatric Psychiatry.* (2021) 36:116–26. doi: 10.1002/gps.5403
- Smirnov DA, Morley M, Shin E, Spielman RS, Cheung VG. Genetic analysis of radiation-induced changes in human gene expression. *Nature.* (2009) 459:587–91. doi: 10.1038/nature07940
- Cheng YY. Dietary reference intakes for Chinese. *Chin Nutr Soc.* (2013) 4:313317.
- Morris MC, Wang Y, Barnes LL, Bennett DA, Dawson-Hughes B, Booth SL. Nutrients and bioactives in green leafy vegetables and cognitive decline: prospective study. *Neurology.* (2018) 90:e214–22. doi: 10.1212/WNL.0000000000004815
- Dong Y, Chen X, Liu Y, Shu Y, Chen T, Xu L, et al. Do low-serum vitamin E levels increase the risk of Alzheimer disease in older people? Evidence from a meta-analysis of case-control studies. *Int J Geriatric Psychiatry.* (2018) 33:e257–63. doi: 10.1002/gps.4780

Publisher's note

All claims expressed in this article are solely those of the authors and do not necessarily represent those of their affiliated organizations, or those of the publisher, the editors and the reviewers. Any product that may be evaluated in this article, or claim that may be made by its manufacturer, is not guaranteed or endorsed by the publisher.

34. Mangialasche F, Solomon A, Kareholt I, Hooshmand B, Cecchetti R, Fratiglioni L, et al. Serum levels of vitamin E forms and risk of cognitive impairment in a Finnish cohort of older adults. *Exp Gerontol.* (2013) 48:1428–35. doi: 10.1016/j.exger.2013.09.006
35. Cherubini A, Martin A, Andres-Lacueva C, Di Iorio A, Lamponi M, Mecocci P, et al. Vitamin E levels, cognitive impairment and dementia in older persons: the InCHIANTI study. *Neurobiol Aging.* (2005) 26:987–94. doi: 10.1016/j.neurobiolaging.2004.09.002
36. Basambombo LL, Carmichael PH, Cote S, Laurin D. Use of vitamin E and C supplements for the prevention of cognitive decline. *Ann Pharmacother.* (2017) 51:118–24. doi: 10.1177/1060028016673072
37. Masaki KH, Losonczy KG, Izmirlian G, Foley DJ, Ross GW, Petrovitch H, et al. Association of vitamin E and C supplement use with cognitive function and dementia in elderly men. *Neurology.* (2000) 54:1265–72. doi: 10.1212/WNL.54.6.1265
38. Kryscio RJ, Abner EL, Caban-Holt A, Lovell M, Goodman P, Darke AK, et al. Association of anti-oxidant supplement use and dementia in the prevention of Alzheimer's disease by vitamin E and selenium trial (PREADVISE). *JAMA Neurol.* (2017) 74:567–73. doi: 10.1001/jamaneurol.2016.5778
39. Gray SL, Anderson ML, Crane PK, Breitner JC, McCormick W, Bowen JD, et al. Anti-oxidant vitamin supplement use and risk of dementia or Alzheimer's disease in older adults. *J Am Geriatrics Soc.* (2008) 56:291–5. doi: 10.1111/j.1532-5415.2007.01531.x
40. Halliwell B. The anti-oxidant paradox: less paradoxical now? *Britain J Clin Pharmacol.* (2013) 75:637–44. doi: 10.1111/j.1365-2125.2012.04272.x
41. Wang X, Quinn PJ. Vitamin E and its function in membranes. *Progr Lipid Res.* (1999) 38:309–36. doi: 10.1016/S0163-7827(99)00008-9
42. Muller L, Theile K, Bohm V. In vitro anti-oxidant activity of tocopherols and tocotrienols and comparison of vitamin E concentration and lipophilic anti-oxidant capacity in human plasma. *Mol Nutr Food Res.* (2010) 54:731–42. doi: 10.1002/mnfr.200900399
43. Raederstorff D, Wyss A, Calder PC, Weber P, Eggersdorfer M. Vitamin E function and requirements in relation to PUFA. *Br J Nutr.* (2015) 114:1113–22. doi: 10.1017/S000711451500272X
44. Jiang Q. Natural forms of vitamin E: metabolism, anti-oxidant, and anti-inflammatory activities and their role in disease prevention and therapy. *Free Rad Biol Med.* (2014) 72:76–90. doi: 10.1016/j.freeradbiomed.2014.03.035
45. Lee CY, Man-Fan WJ. Vitamin E supplementation improves cell-mediated immunity and oxidative stress of Asian men and women. *J Nutr.* (2000) 130:2932–7. doi: 10.1093/jn/130.12.2932
46. De la Fuente M, Hernanz A, Guayerbas N, Victor VM, Arnalich F. Vitamin E ingestion improves several immune functions in elderly men and women. *Free Rad Res.* (2008) 42:272–80. doi: 10.1080/10715760801898838
47. Cristina R, Gerald R, Anne-Marie M, Elisabeth S, Luca B. Dietary vitamin E modulates differential gene expression in the rat hippocampus: potential implications for its neuroprotective properties. *Nutr Neurosci.* (2005) 8:21–9. doi: 10.1080/10284150400027123