



Clinical Risk Factors of Licorice-Induced Pseudoaldosteronism Based on Glycyrrhizin-Metabolite Concentrations: A Narrative Review

Tetsuhiro Yoshino^{1*}, Saori Shimada², Masato Homma², Toshiaki Makino³, Masaru Mimura^{1,4} and Kenji Watanabe¹

¹ Center for Kampo Medicine, Keio University School of Medicine, Tokyo, Japan, ² Department of Pharmaceutical Sciences, Division of Clinical Medicine, Faculty of Medicine, University of Tsukuba, Tsukuba, Japan, ³ Department of Pharmacognosy, Graduate School of Pharmaceutical Sciences, Nagoya City University, Nagoya, Japan, ⁴ Department of Psychiatry and Neurology, Keio University School of Medicine, Tokyo, Japan

OPEN ACCESS

Edited by:

Takao Namiki,
Chiba University, Japan

Reviewed by:

Yukihiro Shoyama,
Nagasaki International
University, Japan
Charikleia Stefanaki,
National and Kapodistrian University
of Athens, Greece

*Correspondence:

Tetsuhiro Yoshino
tetta213@keio.jp

Specialty section:

This article was submitted to
Clinical Nutrition,
a section of the journal
Frontiers in Nutrition

Received: 02 June 2021

Accepted: 16 August 2021

Published: 17 September 2021

Citation:

Yoshino T, Shimada S, Homma M,
Makino T, Mimura M and Watanabe K
(2021) Clinical Risk Factors of
Licorice-Induced
Pseudoaldosteronism Based on
Glycyrrhizin-Metabolite
Concentrations: A Narrative Review.
Front. Nutr. 8:719197.
doi: 10.3389/fnut.2021.719197

Licorice, the dried root or stolon of *Glycyrrhiza glabra* or *G. ularensis*, is commonly used worldwide as a food sweetener or crude drug. Its major ingredient is glycyrrhizin. Hypokalemia or pseudoaldosteronism (PsA) is one of the most frequent side effects of licorice intake. Glycyrrhizin metabolites inhibit type 2 11 β -hydroxysteroid dehydrogenase (11 β HSD2), which decomposes cortisol into inactive cortisone in the distal nephron, thereby inducing mineralocorticoid receptor activity. Among the several reported glycyrrhizin-metabolites, 18 β -glycyrrhetyl-3-O-sulfate is the major compound found in humans after licorice consumption, followed by glycyrrhetic acid. These metabolites are highly bound to albumin in blood circulation and are predominantly excreted into bile via multidrug resistance-associated protein 2 (Mrp2). High dosage and long-term use of licorice are constitutional risk factors for PsA. Orally administered glycyrrhizin is effectively hydrolyzed to glycyrrhetic acid by the intestinal bacteria in constipated patients, which enhances the bioavailability of glycyrrhizin metabolites. Under hypoalbuminemic conditions, the unbound metabolite fractions can reach 11 β HSD2 at the distal nephron. Hyper direct-bilirubin could be a surrogate marker of Mrp2 dysfunction, which results in metabolite accumulation. Older age is associated with reduced 11 β HSD2 function, and several concomitant medications, such as diuretics, have been reported to affect the phenotype. This review summarizes several factors related to licorice-induced PsA, including daily dosage, long-term use, constipation, hypoalbuminemia, hyper direct-bilirubin, older age, and concomitant medications.

Keywords: Japanese Kampo medicine, licorice, pseudoaldosteronism, hypokalemia, pharmacokinetics

INTRODUCTION

Licorice, the dried root or stolon of *Glycyrrhiza glabra* or *G. ularensis*, is commonly used as a food sweetener or crude drug worldwide. Wide-range pharmaceutical effectiveness of licorice includes anti-ulcer, anti-spasmodic, anti-inflammatory, anti-oxidative, anti-virus, anti-microbial, anti-carcinogenic, and anti-androgenic properties (1). Pseudoaldosteronism (PsA) is, however,

one of the most frequent side effects of licorice intake and has been well described by Conn et al. (2). The clinical presentation of PsA is similar to that of primary aldosteronism and is characterized by peripheral edema, hypertension, laboratory hypokalemia, and lower plasma renin activity, due to the excessive action of mineralocorticoid receptors. The mineralocorticoid receptor stabilizes epithelial sodium channels on the apical side of the cortical collecting duct principal cell, which increases sodium reabsorption, corresponding to peripheral edema, hypertension, and lower plasma renin activity (**Figure 1**), whereas potassium is excreted as a cationic ion via the renal outer medullary potassium channel, which results in hypokalemia and, in severe cases, myopathy or arrhythmia (1). Most cases of licorice-induced PsA are self-limiting and are resolved once licorice intake ceases, without any specific treatment. However, some cases can progress to severe hypokalemia and life-threatening arrhythmia (3).

PATHOPHYSIOLOGY OF LICORICE-INDUCED PsA

Licorice contains glycyrrhizin (GL), a glycoside of glycyrrhetic acid (GA) containing two molecules of glucuronic acid. Licorice has long been known to exert corticosteroid-like action, and GL and GA are considered to cause PsA by binding to mineralocorticoid receptors (2). However, their affinity for the receptor is significantly lower than that of the original substrate, aldosterone (4, 5), and the hypothesis that it acts by directly binding to the receptor at the actual blood concentrations of GL and GA is unrealistic (1). Furthermore, previous studies found that licorice-induced PsA did not occur in patients and animals with adrenal deficiency who had lower blood cortisol levels (6–10).

Cortisol, an adrenocortical hormone, has the same affinity for mineralocorticoid receptors as aldosterone; however, it occurs at a higher concentration in the blood. Cortisol is then decomposed by type 2 11β -hydroxysteroid dehydrogenase (11β HSD2) in renal tubule cell cytoplasm into cortisone, which has a lower affinity for the receptor (11), especially at the distal nephron (12, 13) in the normal state. Inhibition of 11β HSD2 by GL metabolites, rather than direct binding of GL or its metabolites to mineralocorticoid receptors was thus considered as the mechanism of licorice-induced PsA (14–16). With GL metabolites in the 11β HSD2-expressing cells, inhibition of 11β HSD2 results in a higher concentration of cortisol that binds to and stimulates the mineralocorticoid receptor (**Figure 1**). Therefore, the difference between primary aldosteronism and PsA is the plasma aldosterone concentration, which is lower in PsA and higher in primary aldosteronism. The aldosterone concentration is suppressed by negative feedback in licorice-induced PsA, even though aldosterone metabolism in the liver could be suppressed by GL or GA (17).

There are several other causes of PsA, including enzymatic defects in adrenal steroidogenesis (deficiency of 17α -hydroxylase and 11β -hydroxylase), gain-of-function mutations in the mineralocorticoid receptor (18), saturation of mineralocorticoid receptor binding by cortisol (Cushing syndrome), alterations

in 11β HSD2 (syndrome of apparent mineralocorticoid excess), and genetic alterations in sodium channel expression (Liddle syndrome) or the sodium-chloride co-transporter (Gordon syndrome) (19).

GL-METABOLITES THAT TRULY REACH AND INHIBIT TYPE 2 11β -HYDROXYSTEROID DEHYDROGENASE

When GL is administered orally, it cannot be absorbed in its original form owing to its molecular structure, which contains both hydrophobic and hydrophilic parts. Orally ingested GL is hydrolyzed to GA by the intestinal bacteria (20–24), and GA appears as the main metabolite in blood circulation (20). Both GA and GL inhibit 11β HSD2 *in vitro*, but the inhibitory activity of GA is approximately 200 times higher than that of GL (15). Further, as GL does not appear in blood after licorice ingestion, GA has been considered as the causative agent for the onset of licorice-induced PsA that inhibits 11β HSD2 in humans. However, the plasma concentration of 3-monoglucuronyl glycyrrhetic acid (3MGA) was reported to be significantly higher in patients with hypokalemia than in those with normokalemia and chronic hepatitis who had been orally treated with GL for more than four weeks, even though the plasma concentration of GA did not differ between the two groups (25). When GL is injected intravenously into rats, it is partially metabolized to 3MGA in the liver by lysosomal β -D-glucuronidase, after which GL and 3MGA are excreted with bile (26). Although 3MGA did not appear in the blood circulation and urine of normal Sprague-Dawley rats that were orally treated with GA, it was found in the blood and urine of multidrug resistance-associated protein (Mrp) 2-deficient Eisai hyperbilirubinemic rats (EHBR) (27). Both GA and 3MGA have high affinity for albumin (28–31); however, only 3MGA is the substrate of organic anion transporter (OAT) 1 and OAT3, which are expressed at the basolateral membrane of renal tubular epithelial cells (31). As a substrate of basolateral transporters, 3MGA is compatible with the intracellular space where 11β HSD2 is located, and is considered a causative agent of PsA. However, 3MGA has not been detected by mass spectrometry in humans after licorice intake (32–34). Instead, we isolated and identified 22α -hydroxy- 18β -glycyrrhetyl-3-O-sulfate-30-glucuronide (compound 1), 22α -hydroxy- 18β -glycyrrhetyl-3-O-sulfate (compound 2), 18β -glycyrrhetyl-3-O-sulfate (compound 3, GA3S), and 18β -glycyrrhetyl-3-O-sulfate-30-glucuronide (compound 4) as other GL metabolites in the urine of EHBR orally treated with GA (34–36). We also found that the blood and urinary concentrations of these new metabolites were much higher than those of 3MGA in EHBR orally treated with GA, and that their pharmacokinetic behavior was similar to that of 3MGA (34, 35). In humans, GA3S was detected at the highest concentration in the blood of patients with PsA who developed rhabdomyolysis due to licorice (34). Further, there were no cases where compound 1 was detected, while compound 2, GL, and 3MGA were rarely detected. The concentration of GA3S was still the highest, followed by GA and compound 4 in the serum of

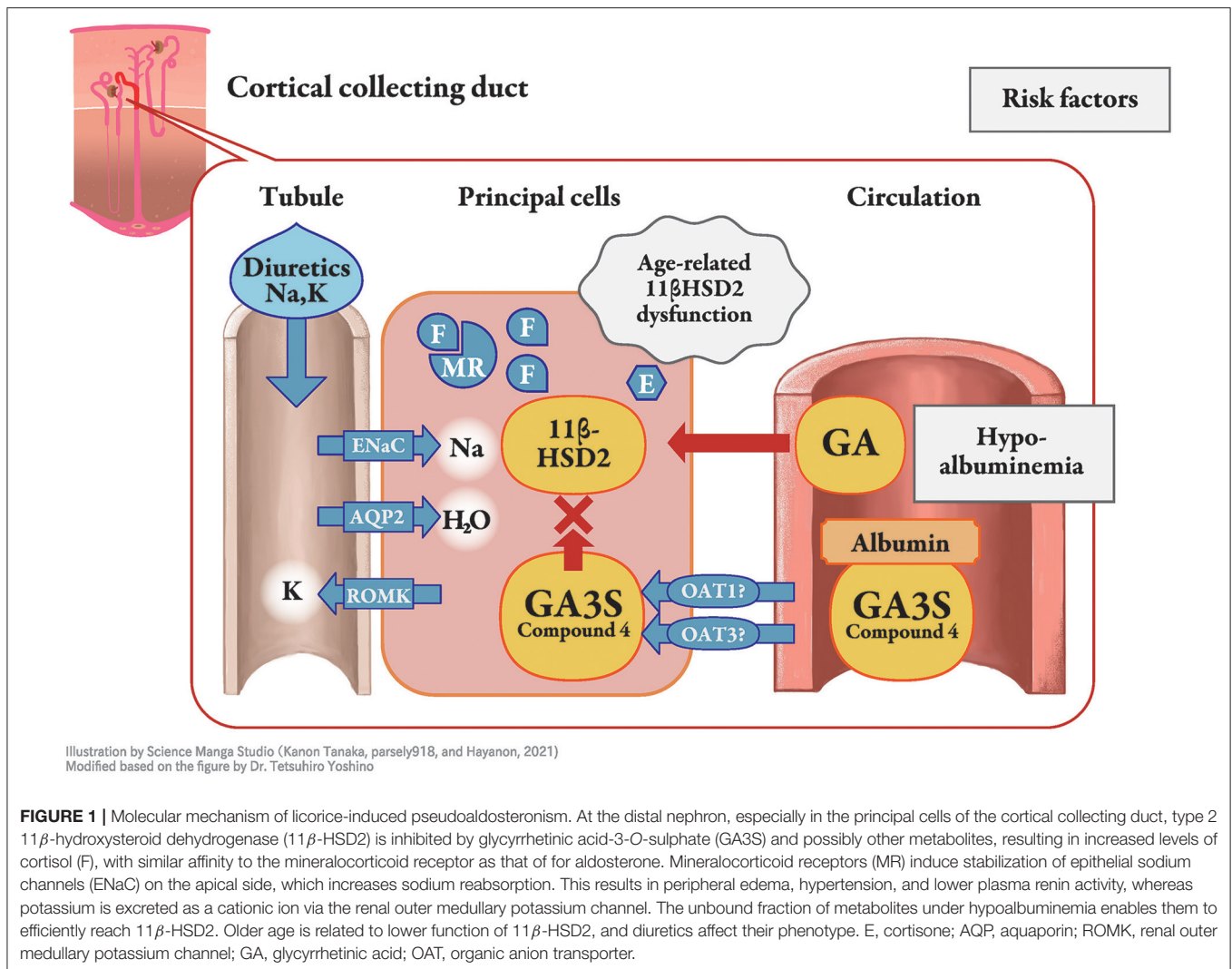


FIGURE 1 | Molecular mechanism of licorice-induced pseudoaldosteronism. At the distal nephron, especially in the principal cells of the cortical collecting duct, type 2 11β -hydroxysteroid dehydrogenase (11β -HSD2) is inhibited by glycyrrhetic acid-3-O-sulphate (GA3S) and possibly other metabolites, resulting in increased levels of cortisol (F), with similar affinity to the mineralocorticoid receptor as that of for aldosterone. Mineralocorticoid receptors (MR) induce stabilization of epithelial sodium channels (ENaC) on the apical side, which increases sodium reabsorption. This results in peripheral edema, hypertension, and lower plasma renin activity, whereas potassium is excreted as a cationic ion via the renal outer medullary potassium channel. The unbound fraction of metabolites under hypoalbuminemia enables them to efficiently reach 11β -HSD2. Older age is related to lower function of 11β -HSD2, and diuretics affect their phenotype. E, cortisone; AQP, aquaporin; ROMK, renal outer medullary potassium channel; GA, glycyrrhetic acid; OAT, organic anion transporter.

patients in a multicenter retrospective case series of milder PsA (33, 36). Therefore, we considered GA3S to be the most likely causative agent of PsA.

DIAGNOSIS OF LICORICE-INDUCED PsA

There is no concrete diagnostic criterion for licorice-induced PsA, and diagnosis is purely based on the clinical presentation of patients during licorice intake rather than by measuring the GL metabolite accumulation in blood. Therefore, diagnosing PsA is challenging, especially in mild cases. The serum concentrations of GA3S, GA, and compound 4 were found to be negatively correlated with serum potassium concentration, plasma renin activity, and aldosterone concentration (33, 36). From these results, it is suggested that such GL-metabolites could be used as an objective laboratory marker of “licorice-induced” PsA, and could be applied to the early detection and prevention of licorice-induced PsA especially in high risk patients.

As it is difficult to diagnose PsA based only on physical examination, including peripheral edema and hypertension, laboratory testing of parameters such as potassium and aldosterone levels is needed. The grade or occurrence of

peripheral edema and hypertension in patients who consumed licorice did not correlate well with laboratory abnormalities, such as hypokalemia, low renin activity, aldosterone concentration, and GL metabolites (33, 36). Several studies have shown the expression of mineralocorticoid receptor and 11β HSD1/2 in the heart and arteries (37–39). Inhibition of 11β HSD2 resulted in an increased contractile response to phenylephrine (40) and altered endothelium-dependent relaxation of arteries due to decreased endothelial nitric oxide and increased endothelin-1 (41). These observations suggest that renal sodium reabsorption cannot fully explain hypertension in licorice-induced PsA.

CLINICAL RISK FACTORS FOR LICORICE-INDUCED PsA

Pharmacokinetics

Daily Dosage

The daily dosage of licorice is a reasonable risk factor for licorice-induced PsA (42, 43). Of the 147 oral Kampo medicinal products for ethical use in Japan, 109 (74%) contain extracts with 1.0–8.0 g licorice for daily dose. Their package inserts describe hypertension, hypokalemia, arrhythmia, and rhabdomyolysis

as adverse events of licorice-induced PsA. Kampo medicinal products containing more than or equal to 2.5 g licorice daily are contraindicated in patients with aldosteronism, myopathy, or hypokalemia, and those containing <2.5 g licorice daily still indicate these PsA-related conditions as potential side effects. As 74% of Kampo medicinal products contain GL, the use of multiple Kampo medicinal products can result in excessive GL ingestion, especially if the medicines are prescribed in multiple hospitals and clinics simultaneously.

Long-Term Use

Long-term use (>30 days) is also an important factor for developing licorice-induced PsA and related symptoms. In a retrospective cohort study, more than 80% of patients developed licorice-induced PsA and related symptoms, including hypokalemia in elderly patients (>60 years old) who received shakuyakuzanzoto, which contains 6.0 g licorice, for longer than 30 days (44). This observation in the study is reasonable as the inhibition of 11 β HSD plateaued after 2 weeks of GL ingestion (45).

Absorption

Constipation

When GL is administered orally, it is hydrolyzed to GA by the intestinal bacteria (20) and then absorbed into blood (Figure 2). GA3S, a sulfate conjugate of GA which is excreted via bile, is also hydrolyzed to GA by the intestinal bacteria and is then partially absorbed from the intestine into the blood circulation to exhibit enterohepatic circulation. The unabsorbed portions of GA and GA3S are then excreted in the feces. Thus, large individual variations in the blood concentration of GA were found even at the same dosage of GL or licorice. This variation may be due to the difference in the activity of hydrolyzed GL in the intestinal bacterial flora among the subjects. The hydrolyzation ratio also depends on the residence time of GL in the intestinal tract. The longer GL stays in the intestinal tract, the more it is hydrolyzed by bacterial β -glucuronidase, resulting in a higher serum concentration of GA (46).

Distribution

As GL metabolites are highly bound to serum albumin (>99.9%) in blood circulation (47, 48), they are not excreted in urine through glomerular filtration. However, they can be transported from blood circulation into tubular cells via OAT1 and OAT3, or other transporters and can participate in the inhibition of intracellular 11 β HSD2 as well as their unbound forms (33–35). Hypoalbuminemia increases the unbound fraction of metabolites in blood circulation (30), resulting in enhanced distribution into principal cells where 11 β -HSD2 is located (Figure 1). Therefore, hypoalbuminemia may be an important risk factor for PsA. Indeed, hypoalbuminemia has been identified as a risk factor in patients receiving yokukansan, which contains 1.5 g of licorice daily (49), as well as in other case series (50, 51).

Metabolism

To the best of our knowledge, there are no reports describing an individual variety of primary or secondary metabolism of GA

in humans. We have previously reported that GA is conjugated by human liver sulfotransferase 2A1 (dehydroepiandrosterone sulfotransferase) into GA3S at C-3 (Figure 2). As serum concentrations of GA and GA3S correlated well, regardless of sex, sulfate conjugation is suggested to have a limited impact on inter-individual variation in GA pharmacokinetics (33).

Excretion

When bile excretion of GA3S is suppressed due to Mrp2 dysfunction (Figure 2), GA3S is transferred into the blood circulation. We have previously highlighted the involvement of Mrp2 in the biliary excretion of GL metabolites in rats (27, 34, 35) and possibly in humans (50, 51). GL metabolites significantly accumulate in the EHBR (27, 34, 35). While this phenomenon is still controversial in humans, we reported the co-occurrence of hypokalemia and hyperbilirubinemia, which could be a surrogate marker for MRP2 dysfunction in several cases; further, hypokalemia was found to be more common in patients with hyperbilirubinemia (50, 51). We consider hyper direct-bilirubin as a rare risk factor for licorice-induced PsA when compared with hypoalbuminemia, which is more common in outpatient settings (51).

Other Factors

Age

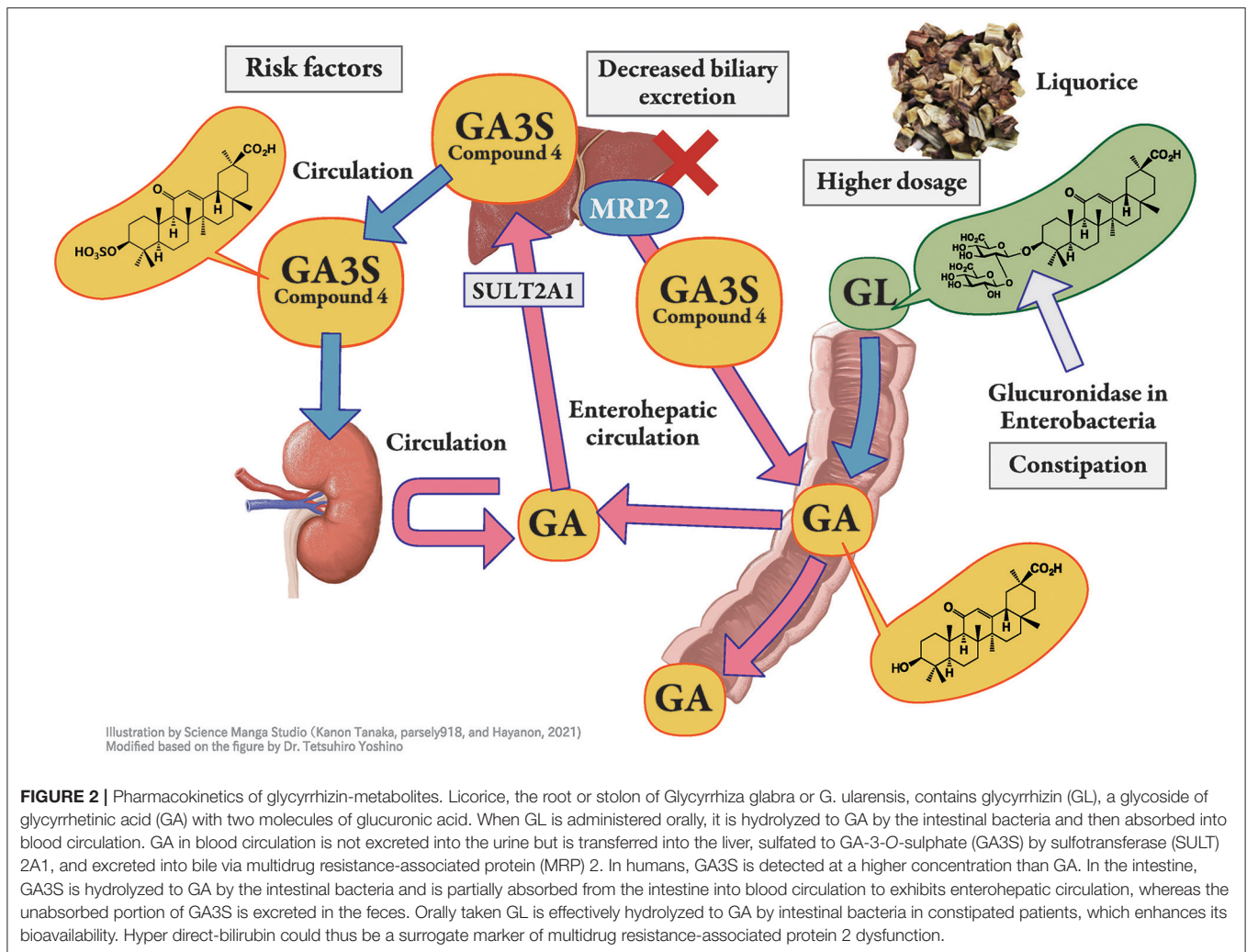
Older age may affect several processes of GL metabolism, and licorice-induced PsA is common in elderly patients (43, 52). As age-dependent decrease in 11 β HSD2 activity in hypertensive patients has been reported (53), alteration in enzyme activity in aging is another risk factor for elderly subjects (Figure 1). In addition, elevation of serum cortisol concentrations occur in elderly which may be associated with decreased negative feedback at the hippocampus related to decreased glucocorticoid receptor concentration (54). This phenomenon could result in the inhibition of 11 β HSD2 and also explains why licorice-induced PsA is common among elderly patients. To the best of our knowledge, there is no case report of licorice-induced PsA in pediatric patients meaning that licorice and GL is safe to use in children.

Female Sex

Several other factors have been proposed as risk factors for licorice-induced PsA, including female sex (55, 56), lower body weight (43), and reduced body surface area (57), which have not been well explained and might be confounding factors (52). Theoretically, constipation is common in female patients, and the higher dosage administered despite lower body weight and surface area compared with that in male patients even with the same daily dosage of licorice.

Concomitant Use of Medications

Concomitant use of medications, including antihypertensives, especially thiazide, loop diuretics, aldosterone blockers, angiotensin-converting enzyme inhibitors, and angiotensin receptor blockers, affects the phenotype of PsA. For example, concomitant use of potassium-losing diuretics increases the risk of hypokalemia in patients treated with yokukansan, an



extract prepared with 1.5 g licorice (43, 49). Loop diuretics block Na-K-2Cl cotransporters, and thiazides block Na-Cl transporters in the distal nephron. Although these diuretics can prevent peripheral edema and hypertension, they increase intraductal flow into the collecting duct and stimulate sodium reabsorption (58), which increases potassium excretion and induces hypokalemia in patients taking licorice-containing products. Systemic glucocorticoid use can also aggravate the inhibition of 11β HSD2 that is similar to Cushing syndrome.

Conversely, potassium-sparing medications such as aldosterone blockers, angiotensin-converting enzyme inhibitors, and angiotensin receptor blockers prevent licorice-induced hypokalemia. Concomitant use of these medications thus hinders the early detection of licorice-induced PsA.

Dementia

Dementia also makes early detection of PsA difficult (43). Therefore, medical specialists, including pharmacists and nurses, should be aware of hypertension or peripheral edema in the patient, even though these physical signs are not very sensitive or specific for licorice-induced PsA.

CONCLUSIONS

We summarized the current understanding regarding the pathophysiology of licorice-induced PsA and listed several factors that affect the pharmacokinetics of GL metabolites, including the daily dosage, dosing period, constipation, hypoalbuminemia, and hyperdirect-bilirubin. Further, older age and several concomitant medications are risk factors for licorice-induced pseudoaldosteronism. Importantly, a deep understanding of the crude drugs in Kampo preparations and the pathophysiology of licorice-induced PsA is necessary for the prevention and early diagnosis of PsA. Clinicians should be aware of PsA and balance the merit and demerit of using licorice or GL for therapy.

AUTHOR CONTRIBUTIONS

TY, SS, MH, and TM wrote the draft of the manuscript. MM and KW designed the study and revised the manuscript. All authors read and approved the final manuscript.

FUNDING

This work was supported by a Grant-in-Aid from the Research Project for Improving Quality in Healthcare and Collecting Scientific Evidence on Integrative Medicine from AMED under grant numbers JP17lk0310036h0001, JP18lk0310049h0001, and JP19lk0310064h0001. The authors declare that this study received funding from Tsumura Co. In addition, TM received research grant supports from Tsumura & Co., Kracie Pharmaceuticals, JPS Pharmaceuticals, and Taisho Pharmaceutical Holdings. MM received research grant supports from Tsumura & Co. and Kracie Pharmaceuticals. The funders were not involved in the study design, collection, analysis, interpretation of data, the writing of article, or the decision

REFERENCES

- Deutch MR, Grimm D, Wehland M, Infanger M, Kruger M. Bioactive candy: effects of licorice on the cardiovascular system. *Foods*. (2019) 8:495. doi: 10.3390/foods8100495
- Conn JW, Rovner DR, Cohen EL. Licorice-induced pseudoaldosteronism. Hypertension, hypokalemia, aldosteronopenia, and suppressed plasma renin activity. *JAMA*. (1968) 205:492–6. doi: 10.1001/jama.205.7.492
- Edelman ER, Butala NM, Avery LL, Lundquist AL, Dighe AS. Case 30-2020: a 54-year-old man with sudden cardiac arrest. *N Engl J Med*. (2020) 383:1263–75. doi: 10.1056/NEJMcpc2002420
- Ulmann A, Menard J, Corvol P. Binding of glycyrrhetic acid to kidney mineralocorticoid and glucocorticoid receptors. *Endocrinology*. (1975) 97:46–51. doi: 10.1210/endo-97-1-46
- Armanini D, Karbowski I, Funder JW. Affinity of liquorice derivatives for mineralocorticoid and glucocorticoid receptors. *Clin Endocrinol*. (1983) 19:609–12. doi: 10.1111/j.1365-2265.1983.tb00038.x
- Molhuysen JA, Gerbrandy J, de Vries LA, de Jong JC, Lenstra JB, Turner KP, et al. A liquorice extract with deoxycortone-like action. *Lancet*. (1950) 2:381–6. doi: 10.1016/S0140-6736(50)91341-9
- Borst JG, Ten Holt SP, De Vries LA, Molhuysen JA. Synergistic action of liquorice and cortisone in Addison's and Simmonds's disease. *Lancet*. (1953) 1:657–63. doi: 10.1016/S0140-6736(53)91800-5
- Card WI, Mitchell W, Strong JA, Taylor NR, Tompsett SL, Wilson JM. Effects of liquorice and its derivatives on salt and water metabolism. *Lancet*. (1953) 1:663–8. doi: 10.1016/S0140-6736(53)91801-7
- Elmadjian F, Hope JM, Pincus G. The action of mono-ammonium glycyrrhizinate on adrenalectomized subjects and its synergism with hydrocortisone. *J Clin Endocrinol Metab*. (1956) 16:338–49. doi: 10.1210/jcem-16-3-338
- Girerd RJ, Rassaert CL, Dipasquale G, Kroc RL. Endocrine involvement in licorice hypertension. *Am J Physiol*. (1960) 198:718–20. doi: 10.1152/ajplegacy.1960.198.4.718
- Edwards CR. Renal 11- β -hydroxysteroid dehydrogenase: a mechanism ensuring mineralocorticoid specificity. *Horm Res*. (1990) 34:114–7. doi: 10.1159/000181808
- Roland BL, Funder JW. Localization of 11 β -hydroxysteroid dehydrogenase type 2 in rat tissues: *in situ* studies. *Endocrinology*. (1996) 137:1123–8. doi: 10.1210/endo.137.3.8603583
- Naray-Fejes-Toth A, Fejes-Toth G. Extracellular localization of endogenous 11 β -hydroxysteroid dehydrogenase-2 in aldosterone target cells. *Endocrinology*. (1998) 139:2955–9. doi: 10.1210/endo.139.6.6036
- Stewart PM, Wallace AM, Valentino R, Burt D, Shackleton CH, Edwards CR. Mineralocorticoid activity of liquorice: 11- β -hydroxysteroid dehydrogenase deficiency comes of age. *Lancet*. (1987) 2:821–4. doi: 10.1016/S0140-6736(87)91014-2
- Monder C, Stewart PM, Lakshmi V, Valentino R, Burt D, Edwards CR. Licorice inhibits corticosteroid 11 β -dehydrogenase of rat kidney and liver: *in vivo* and *in vitro* studies. *Endocrinology*. (1989) 125:1046–53. doi: 10.1210/endo-125-2-1046
- Tanahashi T, Mune T, Morita H, Tanahashi H, Isomura Y, Suwa T, et al. Glycyrrhizic acid suppresses type 2 11 β -hydroxysteroid dehydrogenase expression *in vivo*. *J Steroid Biochem Mol Biol*. (2002) 80:441–7. doi: 10.1016/S0960-0760(02)00033-X
- Latif SA, Conca TJ, Morris DJ. The effects of the licorice derivative, glycyrrhetic acid, on hepatic 3 α - and 3 β -hydroxysteroid dehydrogenases and 5 α and 5 β -reductase pathways of metabolism of aldosterone in male rats. *Steroids*. (1990) 55:52–8. doi: 10.1016/0039-128X(90)90024-6
- Zennaro MC, Fernandes-Rosa F. 30 years of the mineralocorticoid receptor: mineralocorticoid receptor mutations. *J Endocrinol*. (2017) 234:T93–106. doi: 10.1530/JOE-17-0089
- Sabbadin C, Armanini D. Syndromes that mimic an excess of mineralocorticoids. *High Blood Press Cardiovasc Prev*. (2016) 23:231–5. doi: 10.1007/s40292-016-0160-5
- Akao T, Hayashi T, Kobashi K, Kanaoka M, Kato H, Kobayashi M, et al. Intestinal bacterial hydrolysis is indispensable to absorption of 18 β -glycyrrhetic acid after oral administration of glycyrrhizin in rats. *J Pharm Pharmacol*. (1994) 46:135–7. doi: 10.1111/j.2042-7158.1994.tb03756.x
- Kim DH, Hong SW, Kim BT, Bae EA, Park HY, Han MJ. Biotransformation of glycyrrhizin by human intestinal bacteria and its relation to biological activities. *Arch Pharm Res*. (2000) 23:172–7. doi: 10.1007/BF029q75509
- Kim DH, Lee SW, Han MJ. Biotransformation of glycyrrhizin to 18 β -glycyrrhetic acid-3-O- β -D-glucuronide by streptococcus LJ-22, a human intestinal bacterium. *Biol Pharm Bull*. (1999) 22:320–2. doi: 10.1248/bpb.22.320
- Akao T. Purification and characterization of glycyrrhetic acid monoglucuronide β -D-glucuronidase in *Eubacterium* sp. *GLH Biol Pharm Bull*. (1999) 22:80–2. doi: 10.1248/bpb.22.80
- Hattori M, Sakamoto T, Yamagishi T, Sakamoto K, Konishi K, Kobashi K, et al. Metabolism of glycyrrhizin by human intestinal flora. II Isolation and characterization of human intestinal bacteria capable of metabolizing glycyrrhizin and related compounds. *Chem Pharm Bull*. (1985) 33:210–7. doi: 10.1248/cpb.33.210
- Kato H, Kanaoka M, Yano S, Kobayashi M. 3-Monoglucuronyl-glycyrrhetic acid is a major metabolite that causes licorice-induced pseudoaldosteronism. *J Clin Endocrinol Metab*. (1995) 80:1929–33. doi: 10.1210/jc.80.6.1929
- Akao T, Akao T, Hattori M, Kanaoka M, Yamamoto K, Namba T, et al. Hydrolysis of glycyrrhizin to 18 beta-glycyrrhetyl monoglucuronide by lysosomal β -D-glucuronidase of animal livers. *Biochem Pharmacol*. (1991) 41:1025–9. doi: 10.1016/0006-2952(91)90210-V
- Makino T, Ohtake N, Watanabe A, Tsuchiya N, Imamura S, Iizuka S, et al. Down-regulation of a hepatic transporter multidrug resistance-associated protein 2 is involved in alteration of pharmacokinetics of glycyrrhizin and its metabolites in a rat model of chronic liver injury. *Drug Metab Dispos*. (2008) 36:1438–43. doi: 10.1124/dmd.108.021089
- Ichikawa T, Ishida S, Sakiya Y, Sawada Y. Binding of glycyrrhizin to rat plasma and rat serum albumin. *Chem Pharm Bull*. (1985) 33:3031–3. doi: 10.1248/cpb.33.3031

to submit it for publication. An article processing charge, English editing, and figure drawing fee of this article were paid by the joint research program fund of Keio University and Tsumura Co.

ACKNOWLEDGMENTS

We thank Drs. Kan'ichiro Ishiuch, Osamu Morinaga, Kiyoshi Minamizawa, Keiko Ogawa-Ochiai, Takao Namiki, and Tomonori Nakamura for identifying new GL metabolites, providing human samples, and helpful discussions. We thank the Japan Agency for Medical Research and Development (AMED) for data analysis and presentation, and for providing the research support.

29. Ishida S, Ichikawa T, Sakiya Y. Binding of glycyrrhetic acid to rat plasma, rat serum albumin, human serum, and human serum albumin. *Chem Pharm Bull.* (1988) 36:440–3. doi: 10.1248/cpb.36.440
30. Koga K, Tomoyama M, Ohyanagi K, Takada K. Pharmacokinetics of glycyrrhizin in normal and albumin-deficient rats. *Biopharm Drug Dispos.* (2008) 29:373–81. doi: 10.1002/bdd.619
31. Makino T, Okajima K, Uebayashi R, Ohtake N, Inoue K, Mizukami H. 3-Monoglucuronyl-glycyrrhetic acid is a substrate of organic anion transporters expressed in tubular epithelial cells and plays important roles in licorice-induced pseudoaldosteronism by inhibiting 11 β -hydroxysteroid dehydrogenase 2. *J Pharmacol Exp Ther.* (2012) 342:297–304. doi: 10.1124/jpet.111.190009
32. Sadakane C, Watanabe J, Fukutake M, Nisimura H, Maemura K, Kase Y, et al. Pharmacokinetic profiles of active components after oral administration of a Kampo medicine, Shakuyakukanzoto, to healthy adult Japanese volunteers. *J Pharm Sci.* (2015) 104:3952–9. doi: 10.1002/jps.24596
33. Takahashi K, Yoshino T, Maki Y, Ishiuchi K, Namiki T, Ogawa-Ochiai K, et al. Identification of glycyrrhizin metabolites in humans and of a potential biomarker of licorice-induced pseudoaldosteronism: a multi-centre cross-sectional study. *Arch Toxicol.* (2019) 93:3111–9. doi: 10.1007/s00204-019-02588-2
34. Ishiuchi K, Morinaga O, Ohkita T, Tian C, Hirasawa A, Mitamura M, et al. 18 β -glycyrrhetyl-3-O-sulfate would be a causative agent of licorice-induced pseudoaldosteronism. *Sci Rep.* (2019) 9:1587. doi: 10.1038/s41598-018-38182-2
35. Morinaga O, Ishiuchi K, Ohkita, Tian C, Hirasawa A, Mitamura M, T et al. Isolation of a novel glycyrrhizin metabolite as a causal candidate compound for pseudoaldosteronism. *Sci Rep.* (2018) 8:15568. doi: 10.1038/s41598-018-33834-9
36. Ishiuchi Ki, Morinaga O, Yoshino T, Mitamura M, Hirasawa A, Maki Y, et al. Identification of an alternative glycyrrhizin metabolite causing licorice-induced pseudohyperaldosteronism and the development of ELISA system to detect the predictive biomarker. *Front Pharmacol.* (2021) 12:688508. doi: 10.3389/fphar.2021.688508
37. Lombes M, Alfaidy N, Eugene E, Lessana A, Farman N, Bonvalet JP. Prerequisite for cardiac aldosterone action. Mineralocorticoid receptor and 11 β -hydroxysteroid dehydrogenase in the human heart. *Circulation.* (1995) 92:175–82. doi: 10.1161/01.CIR.92.2.175
38. Hadoke PW, Christy C, Kotelevtsev YV, Williams BC, Kenyon CJ, Seckl JR, et al. Endothelial cell dysfunction in mice after transgenic knockout of type 2, but not type 1, 11 β -hydroxysteroid dehydrogenase. *Circulation.* (2001) 104:2832–7. doi: 10.1161/hc4801.100077
39. Christy C, Hadoke PW, Paterson JM, Mullins JJ, Seckl JR, Walker BR. 11 β -hydroxysteroid dehydrogenase type 2 in mouse aorta: localization and influence on response to glucocorticoids. *Hypertension.* (2003) 42:580–7. doi: 10.1161/01.HYP.0000088855.06598.5B
40. Souness GW, Brem AS, Morris DJ. 11 β -Hydroxysteroid dehydrogenase antisense affects vascular contractile response and glucocorticoid metabolism. *Steroids.* (2002) 67:195–201. doi: 10.1016/S0039-128X(01)00148-9
41. Quaschnig T, Ruschitzka F, Shaw S, Luscher TF. Aldosterone receptor antagonism normalizes vascular function in licorice-induced hypertension. *Hypertension.* (2001) 37:801–5. doi: 10.1161/01.HYP.37.2.801
42. Mantani N, Oka H, Sahashi Y, Suzuki A, Ayabe M, Suzuki M, et al. Relationship between incidence of pseudoaldosteronism and daily dose of Glycyrrhiza: review of the literature. *Kampo Med.* (2015) 66:197–202. doi: 10.3937/kampomed.66.197
43. Ishida T, Kawada K, Morisawa S, Jobu K, Morita Y, Miyamura M. Risk factors for pseudoaldosteronism with Yokukansan use: analysis using the Japanese adverse drug report (JADER) database. *Biol Pharm Bull.* (2020) 43:1570–6. doi: 10.1248/bpb.b20-00424
44. Homma M, Ishihara M, Qian W, Kohda Y. Effects of long term administration of Shakuyaku-kanzo-To and Shosaiko-To on serum potassium levels. *Yakugaku Zasshi.* (2006) 126:973–8. doi: 10.1248/yakushi.126.973
45. Ploeger B, Mensinga T, Sips A, Deerenberg C, Meulenbelt J, DeJongh J, et al. population physiologically based pharmacokinetic/pharmacodynamic model for the inhibition of 11 β -hydroxysteroid dehydrogenase activity by glycyrrhetic acid. *Toxicol Appl Pharmacol.* (2001) 170:46–55. doi: 10.1006/taap.2000.9078
46. Ploeger B, Mensinga T, Sips A, Meulenbelt J, DeJongh J. A human physiologically-based model for glycyrrhizic acid, a compound subject to presystemic metabolism and enterohepatic cycling. *Pharm Res.* (2000) 17:1516–25. doi: 10.1023/A:1007661209921
47. Makino T. 3-Monoglucuronyl glycyrrhetic acid is a possible marker compound related to licorice-induced pseudoaldosteronism. *Biol Pharm Bull.* (2014) 37:898–902. doi: 10.1248/bpb.b13-00997
48. Ishida S, Sakiya Y, Ichikawa T, Kinoshita M, Awazu S. Binding of glycyrrhizin to human serum and human serum albumin. *Chem Pharm Bull.* (1989) 37:226–8. doi: 10.1248/cpb.37.226
49. Shimada S, Arai T, Tamaoka A, Homma M. Licorice-induced hypokalaemia in patients treated with Yokukansan preparations: identification of the risk factors in a retrospective cohort study. *BMJ Open.* (2017) 7:e014218. doi: 10.1136/bmjopen-2016-014218
50. Yoshino T, Nakamura H, Sano M, Horiba Y, Nakamura T, Watanabe K. Elevated direct bilirubin—possible predictors for pseudoaldosteronism: a case-control study Tradit. *Kampo Med.* (2016) 3:174–6. doi: 10.1002/tkm.2.1058
51. Komatsu A, Yoshino T, Suzuki T, Nakamura T, Kanai T, Watanabe K. Risk factors associated with pseudoaldosteronism in patients with chronic hepatitis: a retrospective cohort study. *Basic Clin Pharmacol Toxicol.* (2018) 124:607–14. doi: 10.1111/bcpt.13178
52. Yoshino T, Yanagawa T, Watanabe K. Risk factors for pseudoaldosteronism with rhabdomyolysis caused by consumption of drugs containing licorice and differences between incidence of these conditions in Japan and other countries: case report and literature review. *J Alternat Complement Med.* (2014) 20:516–20. doi: 10.1089/acm.2013.0454
53. Henschkowski J, Stuck AE, Frey BM, Gillmann G, Dick B, Frey FJ, et al. Age-dependent decrease in 11 β -hydroxysteroid dehydrogenase type 2 (11 β -HSD2) activity in hypertensive patients. *Am J Hypertens.* (2008) 21:644–9. doi: 10.1038/ajh.2008.152
54. Yiallouris A, Tsioutis C, Agapidaki E, Zafeiri M, Agouridis AP, Ntourakis D, et al. Adrenal aging and its implications on stress responsiveness in humans. *Front Endocrinol.* (2019) 10:54. doi: 10.3389/fendo.2019.00054
55. Sigurjonsdottir HA, Manhem K, Axelson M, Wallerstedt S. Subjects with essential hypertension are more sensitive to the inhibition of 11 β -HSD by licorice. *J Hum Hypertens.* (2003) 17:125–31. doi: 10.1038/sj.jhh.1001504
56. Sigurjonsdottir HA, Axelson M, Johannsson G, Manhem K, Nystrom E, Wallerstedt S. The licorice effect on the RAAS differs between the genders. *Blood Press.* (2006) 15:169–72. doi: 10.1080/08037050600593060
57. Mantani N, Oka H, Watanabe T. A study of factors associated with the development of pseudoaldosteronism in outpatients. *J Altern Complement Med.* (2020) 26:329–34. doi: 10.1089/acm.2019.0415
58. Kashlan OB, Kleyman TR. Epithelial Na⁺ channel regulation by cytoplasmic and extracellular factors. *Exp Cell Res.* (2012) 318:1011–9. doi: 10.1016/j.yexcr.2012.02.024

Conflict of Interest: TY is employed for the joint research program with Tsumura & Co. KW and MH received lecture fee from Tsumura & Co. The authors declare that the research was conducted in the absence of any commercial or financial relationships that could be construed as a potential conflict of interest.

The handling editor declared a past collaboration with several of the authors TY, TM, and KW at the time of review.

Publisher's Note: All claims expressed in this article are solely those of the authors and do not necessarily represent those of their affiliated organizations, or those of the publisher, the editors and the reviewers. Any product that may be evaluated in this article, or claim that may be made by its manufacturer, is not guaranteed or endorsed by the publisher.

Copyright © 2021 Yoshino, Shimada, Homma, Makino, Mimura and Watanabe. This is an open-access article distributed under the terms of the Creative Commons Attribution License (CC BY). The use, distribution or reproduction in other forums is permitted, provided the original author(s) and the copyright owner(s) are credited and that the original publication in this journal is cited, in accordance with accepted academic practice. No use, distribution or reproduction is permitted which does not comply with these terms.