



OPEN ACCESS

EDITED AND REVIEWED BY
Celia Andreu-Sánchez,
Autonomous University of Barcelona, Spain

*CORRESPONDENCE

Dabin Yeum
✉ dabin.yeum.gr@dartmouth.edu

[†]These authors have contributed equally to this work and share senior authorship

SPECIALTY SECTION

This article was submitted to
Perception Science,
a section of the journal
Frontiers in Neuroscience

RECEIVED 20 February 2023

ACCEPTED 08 March 2023

PUBLISHED 23 March 2023

CITATION

Yeum D, Jimenez CA, Emond JA, Meyer ML,
Lansigan RK, Carlson DD, Ballarino GA,
Gilbert-Diamond D and Masterson TD (2023)

Corrigendum: Differential neural reward
reactivity in response to food advertising
medium in children.

Front. Neurosci. 17:1170370.

doi: 10.3389/fnins.2023.1170370

COPYRIGHT

© 2023 Yeum, Jimenez, Emond, Meyer,
Lansigan, Carlson, Ballarino, Gilbert-Diamond
and Masterson. This is an open-access article
distributed under the terms of the [Creative
Commons Attribution License \(CC BY\)](#). The use,
distribution or reproduction in other forums is
permitted, provided the original author(s) and
the copyright owner(s) are credited and that
the original publication in this journal is cited, in
accordance with accepted academic practice.
No use, distribution or reproduction is
permitted which does not comply with these
terms.

Corrigendum: Differential neural reward reactivity in response to food advertising medium in children

Dabin Yeum^{1,2*}, Courtney A. Jimenez³, Jennifer A. Emond^{1,4},
Meghan L. Meyer⁵, Reina K. Lansigan², Delaina D. Carlson²,
Grace A. Ballarino², Diane Gilbert-Diamond^{2,4,6†} and
Travis D. Masterson^{7†}

¹Department of Biomedical Data Science, Geisel School of Medicine at Dartmouth College, Lebanon, NH, United States, ²Department of Epidemiology, Geisel School of Medicine at Dartmouth College, Lebanon, NH, United States, ³Department of Psychological and Brain Science at Dartmouth College, Hanover, NH, United States, ⁴Department of Pediatrics, Geisel School of Medicine at Dartmouth College, Lebanon, NH, United States, ⁵Department of Psychology, Columbia University, New York, NY, United States, ⁶Department of Medicine, Geisel School of Medicine at Dartmouth College, Lebanon, NH, United States, ⁷Department of Nutritional Sciences, College of Health and Human Development, The Pennsylvania State University, University Park, PA, United States

KEYWORDS

food cues, fMRI, neural reactivity, visual stimuli, children, static ad, dynamic ad

A corrigendum on Differential neural reward reactivity in response to food advertising medium in children

by Yeum, D., Jimenez, C. A., Emond, J. A., Meyer, M. L., Lansigan, R. K., Carlson, D. D., Ballarino, G. A., and Masterson, T. D. (2023). *Front. Neurosci.* 17, 1052384. doi: 10.3389/fnins.2023.1052384

In the original article, there was an error in [Figure 3](#) as published. An error was caught with the ventral tegmental area (VTA) masks. We have identified the MNI coordinates for VTA, created a mask, and updated the analysis.

The corrected [Figure 3](#) and its caption appear below.

Following the incorrect mask used for VTA, there was an error in [Table 2/Supplementary Table 1](#) as published. Using the corrected mask, *t*-, *p*-, *q*-values for VTA changed. *q*-values (FDR-corrected statistical significance) for some other regions slightly changed because they are derived using the *p*-values of the multiple tests, but did not affect the interpretation of statistical significance. The VTA was statistically significantly associated with the dynamic advertising condition, but the statistical significance did not survive FDR correction.

The corrected [Table 2/Supplementary Table 1](#) appears below.

Three corrections have been made to the main text due to the error in the VTA mask.

1. A correction has been made to **the abstract**, *Result*, line 46.

This sentence previously stated:

“From the ROI analyses, the right and left hemispheres of the amygdala and insula, and the right hemisphere of the ventral tegmental area and substantia nigra showed significantly

higher responses for the dynamic food ad medium after controlling for covariates and a false discovery rate correction.”

The corrected sentence appears below:

“From the ROI analyses, the right and left hemispheres of the amygdala and insula, and the right hemisphere of the substantia nigra showed significantly higher responses for the dynamic food ad medium after controlling for covariates and a false discovery rate correction.”

2. A correction has been made to **the method**, *Region of Interest Analyses*, paragraph 1, line 312.

This sentence previously stated:

“Masks of these bilateral regions were generated using the Talairach Daemon and Montreal Neurological Institute (MNI) atlas using AFNI (Analysis of Functional NeuroImages version: 21.0.06, (Cox and Hyde, 1997) and are shown in Figure 3.”

The corrected sentence appears below:

“Masks of these bilateral regions were generated using the Talairach Daemon and Montreal Neurological Institute (MNI) atlas using AFNI [Analysis of Functional NeuroImages version: 21.0.06 (Cox and Hyde, 1997)]. The mask of the ventral tegmental area was defined by the sphere with a radius of 5 mm centered at MNI coordinate [4, -16, -10] (Carter, 2009). The ROI masks are shown in Figure 3.”

3. A correction has been made to **the results**, *ROI Analyses*, paragraph 1, line 357.

This sentence previously stated:

“Specifically, in both unadjusted and adjusted models and after the FDR correction, the right and left amygdala, the right and left insula, right ventral tegmental area, and right substantia nigra showed statistically significant higher reward-related response to dynamic ads as compared to static ads.”

The corrected sentence appears below:

“Specifically, in both unadjusted and adjusted models and after the FDR correction, the right and left amygdala, the right and left insula, and right substantia nigra showed statistically significant higher reward-related response to dynamic ads as compared to static ads. The right ventral tegmental area and left substantia nigra showed significantly higher reward-related response to dynamic ads as compared to static ads before the FDR correction but not after.”

The authors apologize for this error and state that this does not change the scientific conclusions of the article in any way. The original article has been updated.

Publisher's note

All claims expressed in this article are solely those of the authors and do not necessarily represent those of their affiliated organizations, or those of the publisher, the editors and the reviewers. Any product that may be evaluated in this article, or claim that may be made by its manufacturer, is not guaranteed or endorsed by the publisher.

References

Carter, R. M. (2009). Activation in the VTA and nucleus accumbens increases in anticipation of both gains and losses. *Front. Behav. Neurosci.* 3, 21. doi: 10.3389/neuro.08.021.2009

Cox, R. W., and Hyde, J. S. (1997). Software tools for analysis and visualization of fMRI data. *NMR Biomed.* 10, 17196178. doi: 10.1002/(SICI)1099-1492(199706/08)10:4/5<171::AID-NBM453<3.0.CO;2-L

The corrected Figure 3 with caption:

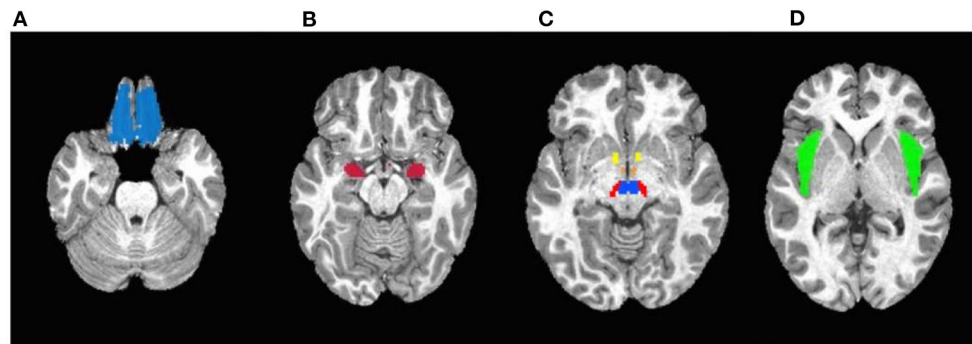


FIGURE 3

Masks used in the region-of-interest (ROI) analysis. (A) Orbitofrontal cortex. (B) Amygdala. (C) Yellow: Nucleus accumbens; Orange: Hypothalamus; Red: Substantia nigra; Blue: Ventral tegmental area. (D) Insula.

The corrected Table 2:

TABLE 2 Region-of-interest (ROI) analysis ($N = 115$).

	L/R	Unadjusted LME models ^{1,2,4}			Adjusted LME models ^{1,2,3,4}		
		<i>t</i> -value	<i>p</i> -value	FDR <i>q</i> -value	<i>t</i> -value	<i>p</i> -value	FDR <i>q</i> -value
Nucleus accumbens	R	-1.49	0.140	0.218	-1.49	0.138	0.215
	L	-1.20	0.232	0.325	-1.24	0.218	0.305
Orbitofrontal cortex	R	-0.94	0.351	0.406	-0.97	0.331	0.386
	L	-1.02	0.309	0.393	-1.07	0.287	0.365
Amygdala	R	5.34	<0.001	<0.001	5.34	<0.001	<0.001
	L	2.43	0.016	0.056	2.43	0.016	0.048
Insula	R	3.07	0.003	0.019	3.15	0.002	0.014
	L	2.31	0.023	0.064	2.42	0.017	0.048
Hypothalamus	R	-0.89	0.377	0.406	-0.89	0.373	0.402
	L	0.09	0.929	0.929	0.10	0.919	0.919
Ventral tegmental area	R	2.07	0.039	0.089	2.09	0.037	0.086
	L	1.95	0.052	0.091	1.94	0.054	0.094
Substantia nigra	R	2.94	0.004	0.019	2.94	0.004	0.019
	L	2.04	0.044	0.089	2.04	0.043	0.086

¹Linear mixed effects models.

²FDR-corrected threshold at $q < 0.05$ was used.

³Covariates include BMI-z, age, sex, % caloric intake at preload, and physical activity.

⁴Bold values represent the statistical significance.

The corrected [Supplementary Table 1](#):

SUPPLEMENTARY TABLE 1 Sensitivity analysis with total screen exposure time as a covariate.

	L/R	Adjusted LME models ^{1,2,3}		
		<i>t</i> -value	<i>p</i> -value	FDR <i>q</i> -value
Nucleus accumbens	R	−1.37	0.172	0.268
	L	−1.23	0.219	0.307
Orbitofrontal cortex	R	−0.87	0.384	0.419
	L	−1.04	0.300	0.382
Amygdala	R	5.26	<0.001	<0.001
	L	2.43	0.016	0.045
Insula	R	3.17	0.002	0.014
	L	2.43	0.016	0.045
Hypothalamus	R	−0.86	0.389	0.419
	L	0.13	0.895	0.895
Ventral tegmental area	R	2.09	0.037	0.086
	L	1.93	0.055	0.096
Substantia nigra	R	2.95	0.004	0.019
	L	2.00	0.046	0.092