



OPEN ACCESS

EDITED BY

Mingxia Liu,
University of North Carolina
at Chapel Hill, United States

REVIEWED BY

Lisa Lu,
Defense and Veterans Brain Injury
Center (DVBIC), United States

Yuncong Ma,
University of Pennsylvania,
United States
Phoebe Imms,
University of Southern California,
United States

Tengfei Li,
University of North Carolina
at Chapel Hill, United States

*CORRESPONDENCE

Anastasia Mirza-Davies
anastasia.mirza-davies@nhs.net

†These authors share senior authorship

SPECIALTY SECTION

This article was submitted to
Brain Imaging Methods,
a section of the journal
Frontiers in Neuroscience

RECEIVED 06 July 2022

ACCEPTED 09 November 2022

PUBLISHED 30 November 2022

CITATION

Mirza-Davies A, Foley S, Caseras X,
Baker E, Holmans P, Escott-Price V,
Jones DK, Harrison JR and
Messaritaki E (2022) The impact
of genetic risk for Alzheimer's disease
on the structural brain networks
of young adults.
Front. Neurosci. 16:987677.
doi: 10.3389/fnins.2022.987677

COPYRIGHT

© 2022 Mirza-Davies, Foley, Caseras,
Baker, Holmans, Escott-Price, Jones,
Harrison and Messaritaki. This is an
open-access article distributed under
the terms of the [Creative Commons
Attribution License \(CC BY\)](https://creativecommons.org/licenses/by/4.0/). The use,
distribution or reproduction in other
forums is permitted, provided the
original author(s) and the copyright
owner(s) are credited and that the
original publication in this journal is
cited, in accordance with accepted
academic practice. No use, distribution
or reproduction is permitted which
does not comply with these terms.

The impact of genetic risk for Alzheimer's disease on the structural brain networks of young adults

Anastasia Mirza-Davies^{1,2*}, Sonya Foley², Xavier Caseras³,
Emily Baker⁴, Peter Holmans³, Valentina Escott-Price^{3,4},
Derek K. Jones², Judith R. Harrison^{2,5†} and
Eirini Messaritaki^{2,6†}

¹School of Medicine, University Hospital Wales, Cardiff University, Cardiff, United Kingdom, ²Cardiff University Brain Research Imaging Centre (CUBRIC), School of Psychology, Cardiff University, Cardiff, United Kingdom, ³Division of Psychological Medicine and Clinical Neurosciences, MRC Centre for Neuropsychiatric Genetics and Genomics, Cardiff University, Cardiff, United Kingdom, ⁴UK Dementia Research Institute, Cardiff University, Cardiff, United Kingdom, ⁵Institute for Translational and Clinical Research, Newcastle University, Newcastle upon Tyne, United Kingdom, ⁶BRAIN Biomedical Research Unit, School of Medicine, Cardiff University, Cardiff, United Kingdom

Introduction: We investigated the structural brain networks of 562 young adults in relation to polygenic risk for Alzheimer's disease, using magnetic resonance imaging (MRI) and genotype data from the Avon Longitudinal Study of Parents and Children.

Methods: Diffusion MRI data were used to perform whole-brain tractography and generate structural brain networks for the whole-brain connectome, and for the default mode, limbic and visual subnetworks. The mean clustering coefficient, mean betweenness centrality, characteristic path length, global efficiency and mean nodal strength were calculated for these networks, for each participant. The connectivity of the rich-club, feeder and local connections was also calculated. Polygenic risk scores (PRS), estimating each participant's genetic risk, were calculated at genome-wide level and for nine specific disease pathways. Correlations were calculated between the PRS and (a) the graph theoretical metrics of the structural networks and (b) the rich-club, feeder and local connectivity of the whole-brain networks.

Results: In the visual subnetwork, the mean nodal strength was negatively correlated with the genome-wide PRS ($r = -0.19$, $p = 1.4 \times 10^{-3}$), the mean betweenness centrality was positively correlated with the plasma lipoprotein particle assembly PRS ($r = 0.16$, $p = 5.5 \times 10^{-3}$), and the mean clustering coefficient was negatively correlated with the tau-protein binding PRS ($r = -0.16$, $p = 0.016$). In the default mode network, the mean nodal strength was negatively correlated with the genome-wide PRS ($r = -0.14$, $p = 0.044$).

The rich-club and feeder connectivities were negatively correlated with the genome-wide PRS ($r = -0.16$, $p = 0.035$; $r = -0.15$, $p = 0.036$).

Discussion: We identified small reductions in brain connectivity in young adults at risk of developing Alzheimer's disease in later life.

KEYWORDS

Avon Longitudinal Study of Parents and Children (ALSPAC), Alzheimer's disease, polygenic risk score, brain networks, brain structure, diffusion magnetic resonance imaging, tractography

Introduction

Alzheimer's disease (AD) is a progressive neurodegenerative disorder that affects over 35 million people world-wide (Prince et al., 2013). It leads to severe cognitive impairment and the inability of patients to function independently. There is a pressing need to identify non-invasive biomarkers that could facilitate pre-symptomatic diagnosis when disease-modifying therapies become available. Although a minority of early-onset AD cases are caused by mutations in specific genes with autosomal dominant inheritance (Tanzi, 2012), the majority of AD has a complex genetic architecture and is highly heritable (Gatz et al., 2006), with different genes conveying different amounts of risk. Genome-wide Association Studies (GWAS) have implicated many Single Nucleotide Polymorphisms (SNPs) (Kunkle et al., 2019), of which the apolipoprotein $\epsilon 4$ allele (*APOE4*) confers the greatest risk (Saunders et al., 1993; Strittmatter et al., 1993; Farrer et al., 1997; Lambert et al., 2013; Yu et al., 2014), but is neither necessary nor sufficient to cause AD (Sims et al., 2020). AD GWAS have also found evidence that specific biological processes, or disease pathways, such as cell trafficking, beta amyloid production, tau protein regulation and cholesterol transport are involved (Jones et al., 2010; Kunkle et al., 2019). Polygenic risk scores (PRS), which aggregate risk loci genome-wide (Wray et al., 2014), are highly predictive of AD (Escott-Price et al., 2015, 2017; Sleegers et al., 2015; Xiao et al., 2015; Yokohama et al., 2015; Tosto et al., 2017; Chaudhury et al., 2018; Cruchaga et al., 2018; Altmann et al., 2020; Harrison et al., 2020) and have been widely used in the search for biomarkers for the disease (Harrison et al., 2020).

Obtaining reliable biomarkers in a non-invasive manner is very valuable because it can be better tolerated by participants compared to more invasive methods (Zhang S. et al., 2012; Prestia et al., 2013). Magnetic resonance imaging (MRI) can non-invasively measure characteristics of the brain's structure. Diffusion-weighted MRI (dMRI, Le Bihan et al., 2006) has allowed mapping of the brain's white-matter (WM) tracts, enabling the study of the human brain as a network of cortical and subcortical areas connected via those tracts. Via these techniques, alterations in the brain of AD patients and of people at risk of developing AD have been identified. AD

patients exhibit axonal loss in tracts associated with certain default mode network (DMN) nodes (Mito et al., 2018). They also exhibit increased characteristic path length and decreased intramodular connections in functional and structural brain networks compared to healthy controls (Dai et al., 2019). The DMN is altered in the presence of AD pathology (Dai et al., 2019) where a decrease in its connectivity has been observed (Mohan et al., 2016; Badhwar et al., 2017). The diffusion tensor fractional anisotropy in the cingulum and of the splenium of the corpus callosum is reduced in AD patients compared to controls (Zhang et al., 2007). Structural covariance brain networks, in which the edges are calculated as the correlations between the node volumes, show decreased small-worldness in AD (John et al., 2017). Increased shortest path length and clustering coefficient, as well as decreased global and local efficiency have been observed in the structural brain networks of AD patients (He et al., 2008; Lo et al., 2010). These results, as well as recent work by Palesi et al. (2016), suggest that, in addition to the AD pathology preferentially affecting specific brain areas, AD is a disconnection syndrome.

Cognitively healthy middle-aged and older carriers of AD risk (genetic or otherwise) also exhibit alterations in brain structure. Decreased hippocampal volume and cortical thickness have been associated with high AD PRS (Mormino et al., 2016; Corlier et al., 2018; Li et al., 2018). Aging *APOE4* carriers have reduced local structural connectivity at the precuneus, medial orbitofrontal cortex and lateral parietal cortex (Brown et al., 2011). *APOE4* status also affects the clustering coefficient and the local efficiency of structural brain networks. Specifically, Ma et al. (2017) observed that the values for the *APOE4* carriers were higher than those of the non-carriers in a normal-cognition group, while the opposite pattern was observed in a group of participants suffering from Mild Cognitive Impairment (MCI). Middle-aged adults with genetic, family and lifestyle risks of developing AD have a hub in their structural connectome that is not present in the structural connectome of people with no such risks of developing AD (Clarke et al., 2020). Significant functional connectivity differences in the brain networks implicated in cognition were seen in middle-aged individuals with a genetic risk for AD (Goveas et al., 2013). The DMN also exhibits

changes in mature (Fleisher et al., 2009) and young *APOE4* carriers (Filippini et al., 2009). A PRS composed of immune risk SNPs is associated with a thinner regional cortex in healthy older adults at risk of developing AD (Corlier et al., 2018). Other studies have also investigated the effect of AD PRS on brain structure (Sabuncu et al., 2012; Harrison et al., 2016; Lupton et al., 2016; Hayes et al., 2017), finding alterations associated with increased genetic burden. Some of the studies have also used disease pathways to inform the PRS (Ahmad et al., 2018; Caspers et al., 2020). A few studies have also identified alterations in the brain of young AD-risk carriers. The hippocampal volume and the fractional anisotropy of the right cingulum are altered in young adults with increased risk of developing AD (Foley et al., 2017), and their precuneal volume is reduced (Li et al., 2018). Increased functional connectivity and hippocampal activation in a memory task was observed in the DMN of young, cognitively normal *APOE4* carriers (Filippini et al., 2009). Young *APOE4* carriers also showed increased activation (measured via fMRI) in the medial temporal lobe compared to non-carriers, while performing a memory task (Dennis et al., 2010).

Despite the evidence that (a) there are alterations in the brain networks of AD patients, and (b) there are functional and structural changes in the brains of young adults at risk of developing AD, the structural brain *networks* of young adults at risk of AD have not been studied. Our work fills that gap, by investigating structural brain networks of young adults at different risks of developing AD, where the risk is evaluated both via GWAS and via specific risk pathways. We hypothesize that the localized alterations in the structure of the brain of young adults at risk of AD would present themselves as changes in their structural brain networks. We investigate the network corresponding to the whole-brain connectome, as well as the DMN, the limbic and visual subnetworks, because those subnetworks are known to be affected in AD (Power et al., 2011; Deng et al., 2016; Badhwar et al., 2017; Hansson et al., 2017; Wang et al., 2019). We also investigate the hubs of the whole-brain connectome and their interconnectivity.

Hypotheses

We hypothesize that increased risk of AD would lead to increased characteristic path length for those networks, and an increased mean clustering coefficient, in agreement with the alterations these measures present in AD. We also hypothesize that the interconnectivity of the hubs would be reduced for increased risk of AD. Given the young age of the participants, we expect any observed alterations to be small. Any identified changes could be followed up in a longitudinal study of the same cohort, and possibly lead to important biomarkers that indicate disease onset or progression, or inform early preventative interventions in adults at risk of AD.

Materials and methods

Participants

The Avon Longitudinal Study of Parents and Children (ALSPAC) is a pregnancy and birth cohort established to identify the factors influencing child health and developmental outcomes. Pregnant women resident in Avon, UK with expected dates of delivery 1st April 1991 to 31st December 1992 were invited to take part in the study. The initial number of pregnancies enrolled is 14,541 (for these at least one questionnaire has been returned or a “Children in Focus” clinic had been attended by 19/07/99). Of these initial pregnancies, there was a total of 14,676 fetuses, resulting in 14,062 live births and 13,988 children who were alive at 1 year of age.

Between the ages of 18–24 years, a subset of ALSPAC offspring were invited to participate in three different neuroimaging studies; the ALSPAC Testosterone study (Patel et al., 2020; Liao et al., 2021; $n = 513$, mean age at attendance 19.62 years, range 18.00–21.50 years), the ALSPAC Psychotic Experiences (PE) study (Drakesmith et al., 2015, 2016, 2019; Fonville et al., 2015; $n = 252$, mean age at attendance 20.03 years, range 19.08–21.52 years), and the ALSPAC Schizophrenia Recall-by-Genotype (SCZ-RbG) study (Lancaster et al., 2019; $n = 196$, mean age at attendance 22.75 years, range 21.12–24.55 years). Scanning protocols were harmonized across sub-studies where possible, and all data were acquired at Cardiff University Brain Research Imaging Centre (CUBRIC).

We analyzed data from 562 individuals (mean age 19.81 years, SD 0.02 years; 62% male) from those ALSPAC neuroimaging studies (Boyd et al., 2013; Fraser et al., 2013; Sharp et al., 2020). Please note that the study website contains details of all the data that is available through a fully searchable data dictionary and variable search tool (<http://www.bristol.ac.uk/alspac/researchers/our-data>). Written informed consent was collected for all participants in line with the Declaration of Helsinki. Ethical approval for the neuroimaging studies was received from the ALSPAC Ethics and Law Committee and the local NHS Research Ethics Committees. Informed consent for the use of data collected via questionnaires and clinics was obtained from participants following the recommendations of the ALSPAC Ethics and Law Committee at the time.

MRI acquisition

MRI data were acquired using a GE HDx 3T system (GE Healthcare, Milwaukee, WI, USA) at CUBRIC. Axial T1-weighted images were acquired using a 3D fast spoiled gradient recalled sequence (TR = 8 ms, TE = 3 ms, TI = 450 ms, flip angle = 20°, matrix size = 256 × 192 × 159) to aid

co-registration. Diffusion-weighted images were acquired with a twice refocused spin-echo echo-planar imaging sequence parallel to the anterior-posterior commissure and the acquisition was peripherally gated to the cardiac cycle. Data were collected from 60 slices of 2.4 mm thickness (FOV = 230 mm, matrix size 96×96 , TE = 87 ms, b -values 0 and 1200 s/mm²) using parallel imaging (ASSET factor = 2) encoding along 30 isotopically distributed directions according to vectors taken from the International Consortium for Brain Mapping protocol (Jones et al., 1999). For 219 of those participants, the diffusion-weighted images were acquired using 60 directions. For those participants, a subsample of the optimal 30 directions were used, alongside the first three images with b -value equal to 0 (see Foley et al., 2018; for further details; Jones et al., 1999; Afzali et al., 2021).

Data processing and tractography

Data pre-processing was performed as described by Foley et al. (2018). To summarize, T1 structural data were down-sampled to 1.5 mm \times 1.5 mm \times 1.5 mm resolution. Eddy-current and participant motion correction were performed with an affine registration to the non-diffusion-weighted images (Leemans and Jones, 2009) with appropriate reorienting of the encoding vectors. Echo-planar imaging of the diffusion-weighted data was performed, warping the data to the down-sampled T1-weighted images (Irfanoglu et al., 2012). RESTORE (Chang et al., 2005), RESDORE (Parker et al., 2013a), and free water correction (Pasternak et al., 2009) algorithms were run. Whole-brain tractography was performed for each data set using the damped Richardson-Lucy pipeline (Dell'acqua et al., 2010) which has been shown to produce a reliable tractogram in cases of crossing fibers, and in-house MATLAB code (Parker et al., 2013b). The criteria used for termination of the tracts were: angle threshold of $> 45^\circ$, fiber orientation density function peak < 0.05 and fractional anisotropy < 0.2 .

Network construction

We used the Automated Anatomical Labeling (AAL) (Tzourio-Mazoyer et al., 2002) to define the 90 cortical and subcortical areas of the cerebrum that correspond to the nodes of the structural networks. The WM tracts linking those areas are the connections, or edges, of the networks. The network generation was performed in ExploreDTI-4.8.6 (Leemans et al., 2009). We generated two connectivity matrices for each participant, one in which the edges are weighted by the number of streamlines (NS) and one in which they are weighted by the mean fractional anisotropy (FA) of the diffusion tensor along the streamlines of the tracts. Both these metrics

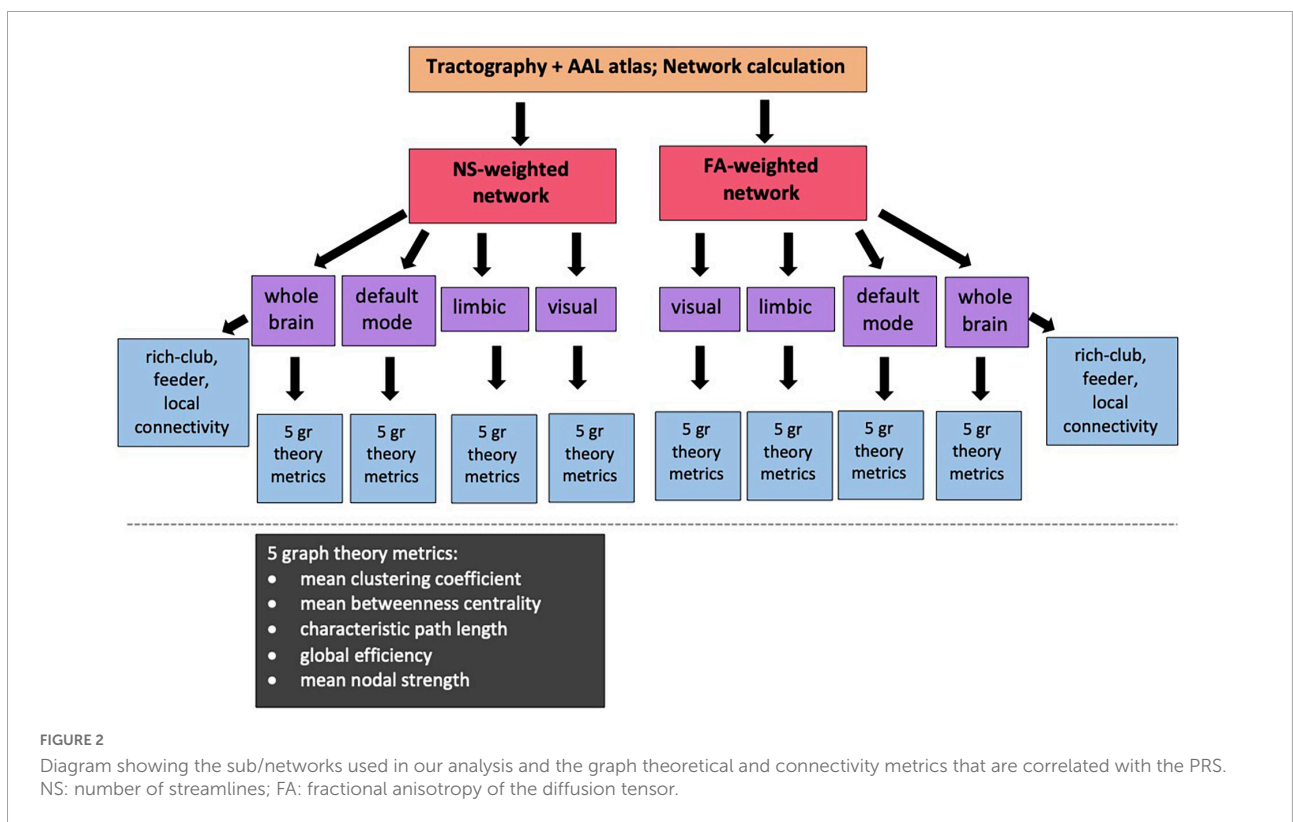
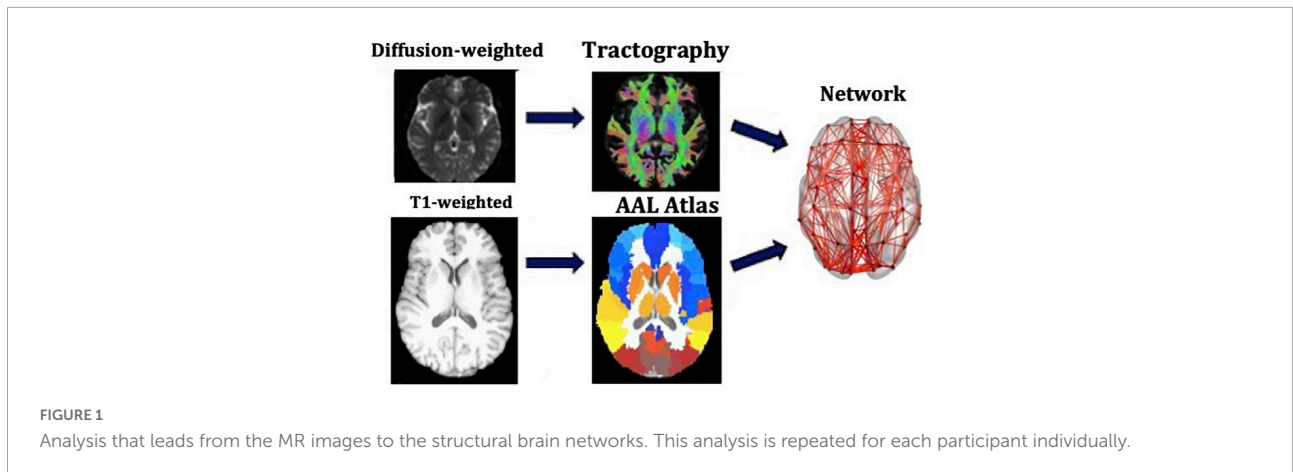
have been shown to result in measures of connectivity that exhibit heritability (Arnatkeviciute et al., 2021), repeatability (Yuan et al., 2018; Messaritaki et al., 2019; Roine et al., 2019; Dimitriadis et al., 2021), and functional relevance (Honey et al., 2009; Goni et al., 2014; Messaritaki et al., 2021). To reduce the possible number of false connections, structural connections reconstructed with 5 or fewer streamlines were discarded from the analysis. Furthermore, to avoid our results being dependent on this choice of threshold, the analysis was repeated for this threshold being from 1 to 12 streamlines. A graphical representation of this part of the analysis is shown in Figure 1.

In addition to the whole-brain connectome, we derived the DMN, the limbic subnetwork and the visual subnetwork, by selecting the edges that connect only the nodes in those subnetworks. The AAL atlas regions for the subnetworks are listed in Table 1 (Power et al., 2011).

Graph theory and network analysis

The Brain Connectivity Toolbox (BCT, Rubinov and Sporns, 2010) was used to calculate the graph theoretical metrics for the structural brain networks of all participants (Figure 2). A detailed description of graph theoretical metrics is provided by Rubinov and Sporns (2010), but we provide here a brief explanation of the ones we use, for completeness. The *clustering coefficient* of a node is equal to the number of existing edges among the neighbors of the node divided by the number of all possible edges and is a measure of how interconnected the node's neighbors are. The *degree* of a node is the number of edges that stem from that node. The *betweenness centrality* of a node is the number of shortest paths (connecting pairs of nodes) that the node belongs to in the network. The *nodal strength* is the sum of the weights of the edges stemming from a node. These four graph theoretical metrics are node-specific. To derive network-wide measures, their mean values over all the nodes in the network are used. The *characteristic path length* of a network is the mean value of the steps along the shortest paths that connect all possible pairs of nodes in the network. The *global efficiency* of the network is proportional to the sum of the inverse shortest path lengths over all pairs of nodes in the network and is related to how efficiently the nodes of the network can exchange information. In contrast to the previous measures mentioned, the characteristic path length and the global efficiency are network-wide, rather than node-specific, measures. Finally, the *local efficiency* of a node is calculated the same way as the global efficiency of the subnetwork that consists of the node's neighbors.

For our analysis, we calculated the mean clustering coefficient, mean betweenness centrality, characteristic path length, global efficiency and mean nodal strength. The expectation is that, if changes to the topological organization are a result of increased risk of developing AD, then the



mean clustering coefficient, global efficiency and mean nodal strength will decrease, and the characteristic path length will increase, for increased risk. In order to remove metrics that represent redundant information from our analysis, we calculated the Pearson correlation between all pairs of graph theoretical metrics for each network and excluded from further analysis metrics that exhibited correlation coefficients of 0.85 or higher.

In order to investigate the hubs of the networks, we also calculated the local efficiency and the degree of each node. This allowed us to calculate the hub-score, or hubness, of each

node for the whole-brain network. Instead of using a single measure for identifying hubs (for example only the node degree or only the betweenness centrality as is sometimes done), we used a composite measure as proposed by Betzel et al. (2014). Specifically, we normalized the node degree, nodal strength, betweenness centrality and local efficiency for each participant – this was in order for all four metrics to be equally weighted in the hubness calculation and was done by dividing the values of each metric across nodes by the largest value. We then averaged the normalized values for each node. That average was the *hubness* of the node.

TABLE 1 Nodes of the AAL atlas included in the DMN, limbic and visual subnetworks. The nodes from both the left and right hemispheres are included.

	DMN	Limbic	Visual
Middle orbitofrontal gyr	Middle frontal gyr	Hippocampus	Inferior temporal gyr
Thalamus	Inferior orbitofrontal gyr	Amygdala	Fusiform gyr
Precuneus	Superior frontal gyr	Anterior cingulate gyr	Lingual gyr
Superior orbitofrontal gyr	Inferior frontal gyr (triangular)	Middle cingulate gyr	Calcarine fissure
Anterior cingulate gyr	Inferior frontal gyr (opercula)	Posterior cingulate gyr	Cuneus
Middle cingulate gyr	Middle occipital gyr	Parahippocampal gyr	Middle occipital gyr
Posterior cingulate gyr	Angular gyr	Olfactory	Superior occipital gyr
Hippocampus	Parahippocampal gyr	Insula	Inferior occipital gyr

The hubness of each node was averaged over all participants, to derive the mean node hubness. Hub nodes were defined as those with mean node hubness greater or equal to the average of the mean node hubnesses plus one standard deviation, according to van den Heuvel and Sporns (2011). The hub nodes comprise a *rich club* of nodes. The rich-club connectivity was calculated for each participant by summing the strength of the edges that connect the hub nodes only. The *feeder* connections, i.e., the connections that link one hub node and one non-hub node, were also identified. The feeder connectivity was also calculated for each participant, as the sum of the strength of the feeder connections. Finally, the *local* connections were identified as the connections that link non-hub nodes only. The local connectivity was the sum of the strength of the local connections. We stress that the rich-club, feeder and local connectivities are defined for the whole-brain network.

Polygenic risk score calculation

Genome data were provided by the University of Bristol. ALSPAC participants were genotyped using the Illumina HumanHap550 quad genome-wide SNP genotyping platform by 23andMe subcontracting the Wellcome Trust Sanger Institute (WTSI, Cambridge, UK) and the Laboratory Corporation of America (Burlington, NC, USA). Participants were excluded from analysis if they had minimal or excessive heterozygosity, genotyping completeness < 97%, or if they were of non-European ethnicity. Quality control parameters were as follows: Minor allele frequency (MAF) > 0.01; Individual call rate > 95%, Hardy Weinberg Equilibrium (HWE) ($P > 5 \times 10^{-7}$). PRSs were calculated according to the International Schizophrenia Consortium method

(Purcell et al., 2009). Training data were taken from the latest genetic meta-analysis of AD (Kunkle et al., 2019) comprising of 94,437 cases and controls. In our sample, SNPs with low MAF < 0.1 and imputation quality < 0.9 were removed. Data were then pruned for SNPs in linkage disequilibrium (LD) using genetic data analysis tool PLINK (Chang et al., 2015) using the clumping function (-clump). This aimed to remove SNPs in LD within a 500 kilobase window, retaining only the most significantly associated SNPs. Scores were generated in PLINK using the -score command. We note that *APOE* has a p -value of around 7×10^{-44} in most Alzheimer's GWAS, and it explains almost as much variance in the phenotype as all the other loci combined. Therefore, *APOE4* carriers are invariably in the highest deciles of the polygenic score.

To compute pathway-specific PRS, nine pathway groups were taken from Kunkle et al. (2019), who matched lists of SNPs to genes and tested them for enrichment within gene functional categories. The pathway groups were as follows: protein-lipid complex assembly, regulation of beta-amyloid formation, protein-lipid complex, regulation of amyloid precursor protein catabolic process, tau protein binding, reverse cholesterol transport, protein-lipid complex subunit organization, plasma lipoprotein particle assembly and activation of the immune response. The lists of SNPs were matched to SNPs in our target dataset. Then the data was clumped and scored as described above.

A previous study found that an AD PRS computed with p -value threshold (P_T) of 0.001 explained the most variance in structural (non-network) neuroimaging phenotypes of healthy young adults (Foley et al., 2017). Therefore, our primary analysis used $P_T = 0.001$ to select relevant SNPs from the discovery sample. For our secondary analysis, seven different progressive training P_T s were computed (0.00001; 0.0001; 0.01; 0.05; 0.1; 0.3; and 0.5). Lower P_T indicates that SNPs are more significantly associated with AD case status in the training dataset. Two versions of each score were calculated, including and excluding the *APOE* locus. This was done to assess the effect of PRS without *APOE* and the effect of *APOE* within the PRS.

Through this method, we ended up with 20 different PRS: genome-wide with and without *APOE*, and each of the nine pathway-specific PRS with and without *APOE*. Each of these PRS further corresponds to eight values for the P_T s, as described above.

Statistical analyses

Correlations between graph theoretical metrics and the genome-wide PRS (*APOE* included) and the nine pathway-specific PRS (*APOE* included) were calculated in MATLAB (MATLAB and Statistics Toolbox Release, 2015b and 2021a; The MathWorks, Inc, Natick, MA, United States). Correlations were also calculated between the rich-club, feeder and local

connectivity versus the 10 PRS scores. The participant gender and the diffusion scan type (30 vs. 60 diffusion gradient directions) were controlled for by using partial correlations. Data points that had Cook's distance higher than three times the mean Cook's distance (Cook, 1977) were removed from the calculation. Our primary analysis used $P_T = 0.001$. Resulting p -values were corrected for multiple comparisons using false-discovery-rate (FDR) correction (Benjamini and Yekutieli, 2005). The correction was applied over the graph theoretical metrics of all four networks, the rich-club, feeder and local connectivities, and the 10 PRS (i.e., the genome-wide plus the nine pathway-specific ones) for each P_T . If a significant association was found between a PRS and the graph theoretical metrics or connectivities, correlations were also calculated with the PRS excluding the *APOE* locus, to assess whether the correlations were purely due to that locus. To exclude the possibility that our results are confounded by population stratification, we repeated our analyses using the first 10 principal components derived from common alleles as covariates.

We also looked at the rest of the P_T thresholds, as is standard practice (Purcell et al., 2009; de Leeuw et al., 2015). In particular, the investigations for the higher values of P_T are justified, because it is likely that many loci that show only nominal association with disease status are actually involved in the pathological process. This was demonstrated by Escott-Price et al. (2015) who found that the highest prediction accuracy was given by a PRS which included SNPs from 0.5 and below (AUC = 78.2%, 95% confidence interval: 77–80%). To control for multiple comparisons in this case, and since the performed tests are not independent, we calculated the permutation-corrected p -values via the minP procedure (Westfall and Young, 1993; Rempala and Yang, 2013), intended for strong control of the family wise error rate. In the “Results” Section we report the p -values without this correction [corrected, however, for multiple testing over all the graph theoretical metrics and

(sub)networks as listed above], and clearly state at the end of the Section which of these values survived this latter multiple-comparison testing for the P_T thresholds. The related corrected p -values are given in Section A of the [Supplementary Material](#).

Results

Networks

The whole-brain, default mode, limbic and visual subnetworks for one participant are shown in [Figure 3](#) (NS-weighted networks) and [Figure 4](#) (FA-weighted networks). The relative strength of the connections depends on the edge-weighting and has an impact on the graph theoretical metrics of the networks. Given the differences observed between NS- and FA-weighted networks, performing the analysis for both these edge-weightings is warranted.

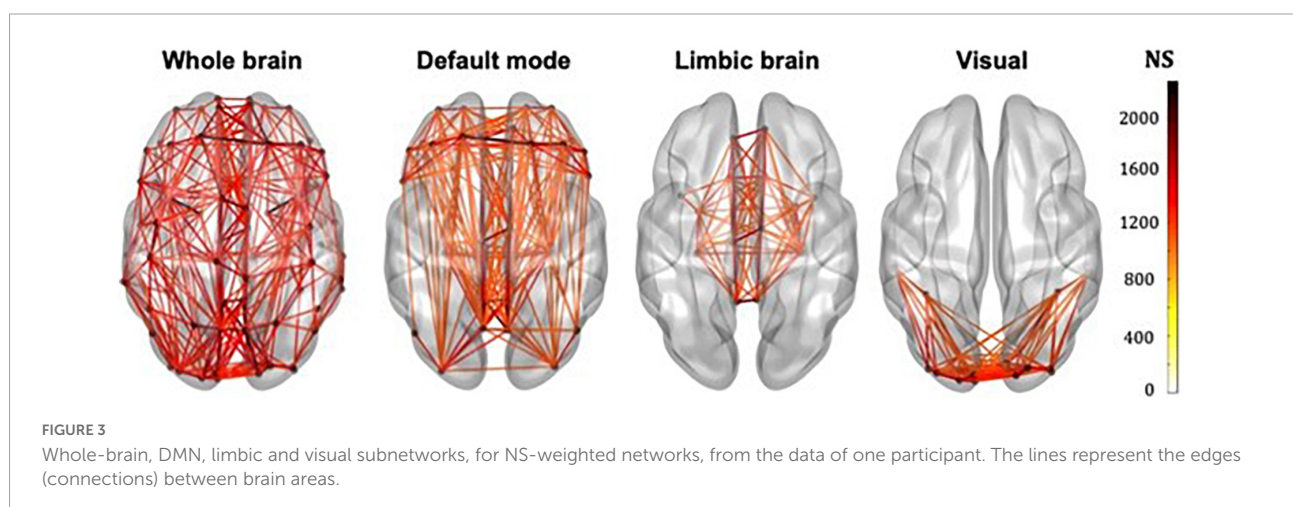
The correlation coefficients between graph theoretical metrics of the networks and the related p -values are given in [Table 2A](#) (for the NS-weighted networks) and [Table 2B](#) (for the FA-weighted networks). Based on these, we selected the metrics to be used in subsequent analysis, which are summarized in [Table 3](#).

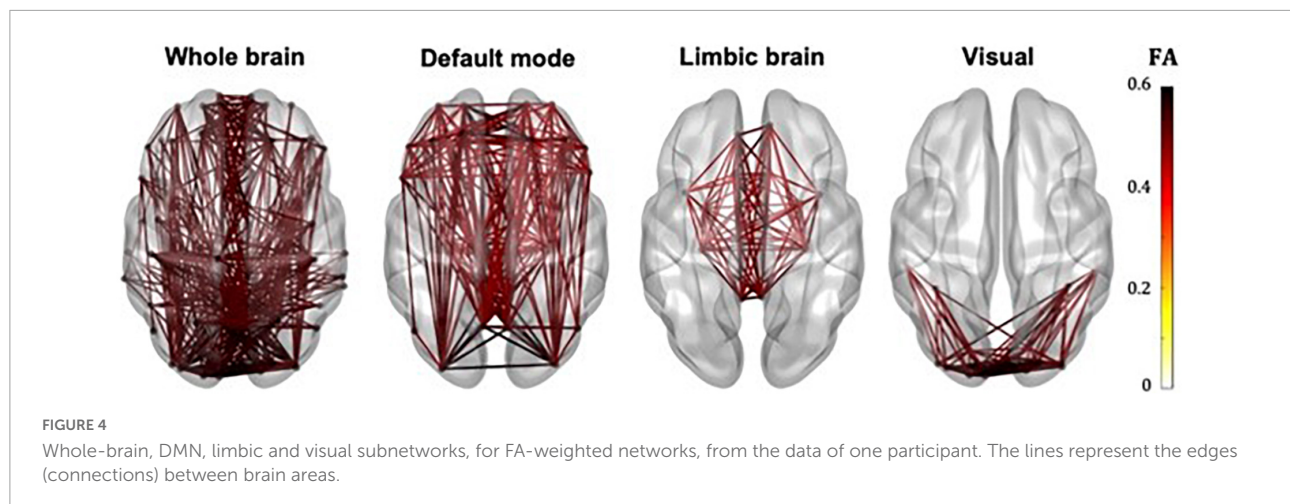
Whole-brain connectome

No statistically significant correlations between graph theoretical metrics of the whole-brain network and the PRSs were found to survive multiple comparison correction.

Default-mode network

For our primary analysis ($P_T = 0.001$), no statistically significant correlations between the PRS and the graph





theoretical metrics of the DMN survived multiple-comparison correction. The following correlations, however, did survive multiple comparison correction.

For $P_T = 0.3$, the mean nodal strength of the NS-weighted DMN was correlated with the genome-wide PRS, including *APOE* ($r = -0.14$, $p = 1.5 \times 10^{-3}$). When the *APOE* locus was excluded from the analysis, the correlation persisted ($r = -0.14$, $p = 1.6 \times 10^{-3}$). The correlations also persisted when the analysis was repeated for NS thresholds between 1 and 12.

For $P_T = 0.01$, the mean betweenness centrality of the FA-weighted DMN was correlated with the activation of the immune response PRS, including *APOE* ($r = -0.16$, $p = 1.2 \times 10^{-4}$). When the *APOE* locus was excluded from the analysis, the correlation persisted ($r = -0.15$, $p = 4.5 \times 10^{-4}$). The correlations also persisted when the analysis was repeated for NS thresholds between 1 and 12.

Repeating the analyses for the visual subnetwork using the first ten principal components derived from common alleles as covariates did not change these results.

All these results are shown in [Figure 5](#).

Limbic subnetwork

No statistically significant correlations between graph theoretical metrics of the limbic subnetwork and the PRSs were found to survive multiple comparison correction.

Visual subnetwork

For our primary analysis ($P_T = 0.001$), no statistically significant correlations between the PRS and the graph theoretical metrics of the visual subnetwork survived multiple-comparison correction. The following correlations, however, did survive multiple comparison correction:

The mean nodal strength of the NS-weighted visual subnetwork was correlated with the genome-wide PRS, including *APOE*, for $P_T = 0.1, 0.3$, and 0.5 . The correlation coefficients were $r = -0.17, -0.18$, and -0.19 , for the three values of P_T respectively, while the p -values were $8.4 \times 10^{-5}, 4.1 \times 10^{-5}$, and 1.3×10^{-5} respectively. When the analysis was repeated with the *APOE* locus excluded, the correlations persisted. Specifically, the correlation coefficients were: $-0.15, -0.17$, and -0.18 , while the p -values were $7.6 \times 10^{-4}, 1.4 \times 10^{-4}, 2.9 \times 10^{-5}$, for the three values of P_T respectively. The correlations also persisted when the analysis was repeated for NS thresholds between 1 and 12.

The mean clustering coefficient of the NS-weighted visual subnetwork was correlated with the tau protein binding PRS, including *APOE*, for $P_T = 0.3$ and 0.5 . The correlation coefficients were $r = -0.14$, while the p -values were 1.4×10^{-3} for both P_T s. When the analysis was repeated with the *APOE* locus excluded, the significance of the correlations disappeared, with the correlation coefficients being -0.02 and the p -values being 0.71 . The correlations persisted, however, when the analysis was repeated for NS thresholds between 1 and 12.

The mean betweenness centrality of the NS-weighted visual subnetwork was correlated with the plasma lipoprotein particle assembly PRS, including *APOE*, for $P_T = 0.3$ and 0.5 . The correlation coefficients were $r = 0.15$ and 0.16 , for the two values of P_T respectively, while the p -values were 9.2×10^{-4} and 3.6×10^{-4} respectively. When the analysis was repeated with the *APOE* locus excluded, the correlations persisted, with the correlation coefficients being $r = 0.12$ and 0.13 for the two values of P_T respectively, and the p -values being 7.5×10^{-3} and 2.2×10^{-3} respectively. The correlations also persisted when the analysis was repeated for NS thresholds between 1 and 12.

TABLE 2 Correlation coefficients and *p*-values (the latter in italics) for the graph theoretical metrics of the NS-weighted networks (A) and the FA-weighted networks (B).

Network	cc/cpath	cc/Eg	cc/bc	cc/nstr	cpath/Eg	cpath/bc	cpath/nstr	Eg/bc	Eg/nstr	bc/nstr
A										
WB	0.09 <i>0.025</i>	-0.14 <i>0.001</i>	-0.14 <i>8 × 10⁻⁴</i>	-0.13 <i>0.002</i>	-0.97 <i><10⁻¹⁰</i>	0.19 <i>10⁻⁵</i>	-0.93 <i><10⁻¹⁰</i>	-0.10 <i>0.021</i>	0.97 <i><10⁻¹⁰</i>	-0.13 <i>0.001</i>
DMN	0.05 <i>0.273</i>	-0.15 <i>2 × 10⁻⁴</i>	-0.07 <i>0.092</i>	-0.25 <i><10⁻⁸</i>	-0.78 <i><10⁻¹⁰</i>	0.09 <i>0.032</i>	-0.71 <i><10⁻¹⁰</i>	-0.01 <i>0.784</i>	0.95 <i><10⁻¹⁰</i>	-0.06 <i>0.140</i>
LIMBIC	-0.07 <i>0.090</i>	-0.03 <i>0.414</i>	0.02 <i>0.575</i>	-0.09 <i>0.030</i>	-0.53 <i><10⁻¹⁰</i>	0.34 <i><10⁻¹⁰</i>	-0.46 <i><10⁻¹⁰</i>	-0.23 <i>3 × 10⁻⁸</i>	0.95 <i><10⁻¹⁰</i>	-0.24 <i><10⁻⁸</i>
Visual	-0.21 <i>6 × 10⁻⁷</i>	0.13 <i>2 × 10⁻³</i>	-0.27 <i><10⁻⁸</i>	0.15 <i>3 × 10⁻⁴</i>	-0.91 <i><10⁻¹⁰</i>	0.38 <i><10⁻¹⁰</i>	-0.87 <i><10⁻¹⁰</i>	-0.28 <i><10⁻¹⁰</i>	0.98 <i><10⁻¹⁰</i>	-0.33 <i><10⁻¹⁰</i>
B										
WB	-0.35 <i><10⁻¹⁰</i>	0.37 <i><10⁻¹⁰</i>	-0.31 <i><10⁻¹⁰</i>	0.44 <i><10⁻¹⁰</i>	-0.99 <i><10⁻¹⁰</i>	0.69 <i><10⁻¹⁰</i>	-0.91 <i><10⁻¹⁰</i>	-0.65 <i><10⁻¹⁰</i>	0.91 <i><10⁻¹⁰</i>	-0.85 <i><10⁻¹⁰</i>
DMN	-0.44 <i><10⁻¹⁰</i>	0.45 <i><10⁻¹⁰</i>	-0.45 <i><10⁻¹⁰</i>	0.53 <i><10⁻¹⁰</i>	-0.98 <i><10⁻¹⁰</i>	0.78 <i><10⁻¹⁰</i>	-0.92 <i><10⁻¹⁰</i>	-0.73 <i><10⁻¹⁰</i>	0.93 <i><10⁻¹⁰</i>	-0.90 <i><10⁻¹⁰</i>
LIMBIC	-0.56 <i><10⁻¹⁰</i>	0.55 <i><10⁻¹⁰</i>	-0.57 <i><10⁻¹⁰</i>	0.63 <i><10⁻¹⁰</i>	-0.98 <i><10⁻¹⁰</i>	0.81 <i><10⁻¹⁰</i>	-0.95 <i><10⁻¹⁰</i>	-0.76 <i><10⁻¹⁰</i>	0.94 <i><10⁻¹⁰</i>	-0.92 <i><10⁻¹⁰</i>
Visual	-0.43 <i><10⁻¹⁰</i>	0.40 <i><10⁻¹⁰</i>	-0.33 <i><10⁻¹⁰</i>	0.41 <i><10⁻¹⁰</i>	-0.98 <i><10⁻¹⁰</i>	0.78 <i><10⁻¹⁰</i>	-0.96 <i><10⁻¹⁰</i>	-0.70 <i><10⁻¹⁰</i>	0.96 <i><10⁻¹⁰</i>	-0.83 <i><10⁻¹⁰</i>

cc, mean clustering coefficient; cpath, characteristic path length; Eg, global efficiency; nstr, mean nodal strength; bc, mean betweenness centrality.

Repeating the analyses for the DMN using the first ten principal components derived from common alleles as covariates did not change these results.

All these results are shown in [Figure 6](#).

Rich-club, feeder, and local connectivity of the whole-brain network

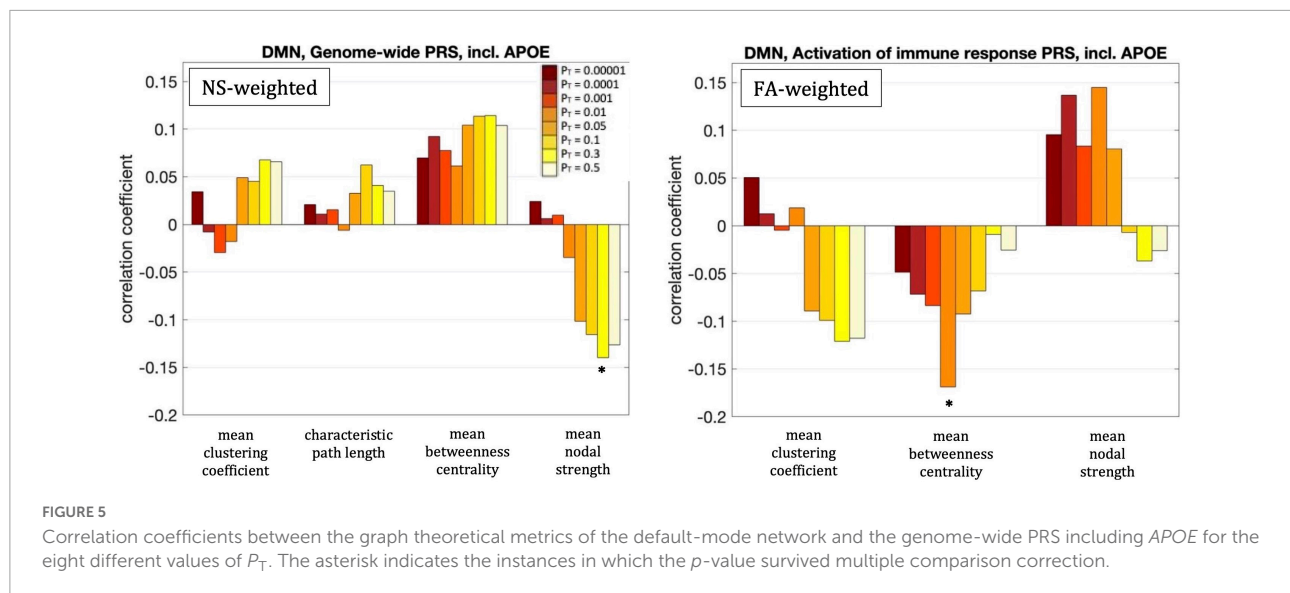
[Figure 7](#) shows the nodes that are hubs for the NS-weighted and the FA-weighted networks. For the NS-weighted networks, the hubs were the left and right putamen, left and right precuneus, left and right hippocampus, left and right superior frontal gyrus, left middle occipital gyrus, left and right superior occipital gyrus, right calcarine sulcus and right caudate. For the FA-weighted networks, the hubs were the left and right putamen, left and right precuneus, left and right hippocampus, left and right superior frontal gyrus, left middle occipital gyrus, left calcarine sulcus, right superior parietal gyrus, left superior orbitofrontal gyrus, and left superior occipital gyrus. We note that ten out of the 13 hubs were the same in the NS- and FA-weighted networks, while three differed.

For our primary analysis ($P_T = 0.001$), no statistically significant correlations between the PRS and the rich-club, feeder or local connectivities of the whole-brain network survived multiple-comparison correction. The following correlations, however, did survive multiple comparison correction:

The rich-club connectivity of the NS-weighted whole-brain connectome was correlated with the genome-wide PRS, including *APOE*, for $P_T = 0.3$ and 0.5 . The correlation coefficients were $r = -0.16$ and -0.15 for the two P_T s respectively, while the p -values were 3.7×10^{-4} and 1.1×10^{-3} respectively. When the analysis was repeated with the *APOE* locus excluded, the correlations persisted, with the correlation coefficients being $r = -0.15$ and -0.14 for the two P_T s respectively, and the p -values being 6×10^{-4} and 1.7×10^{-3} .

TABLE 3 Metrics used in the analysis for each network.

	NS-weighted	FA-weighted
Whole-brain	Mean clustering coefficient	Mean clustering coefficient
	Mean betweenness centrality	Mean betweenness centrality
	Mean nodal strength	Mean nodal strength
	Rich-club connectivity	Rich-club connectivity
	Feeder connectivity	Feeder connectivity
	Local connectivity	Local connectivity
Default-mode	Mean clustering coefficient	Mean clustering coefficient
	Mean betweenness centrality	Mean betweenness centrality
	Mean nodal strength	Mean nodal strength
	Characteristic path length	
Limbic	Mean clustering coefficient	Mean clustering coefficient
	Mean betweenness centrality	Mean betweenness centrality
	Mean nodal strength	
	Characteristic path length	
Visual	Mean clustering coefficient	Mean clustering coefficient
	Mean betweenness centrality	Mean betweenness centrality
	Mean nodal strength	Mean nodal strength



respectively. The correlations also persisted when the analysis was repeated for NS thresholds of 1–12.

The feeder connectivity of the NS-weighted whole-brain connectome was correlated with the genome-wide PRS, including *APOE*, for $P_T = 0.3$ and 0.5 . The correlation coefficients were $r = -0.14$ and -0.15 for the two P_T s respectively, while the p -values were 1.3×10^{-3} and 8.8×10^{-4} respectively. When the analysis was repeated with the *APOE* locus excluded, the correlations persisted, with the correlation coefficients being $r = -0.14$ and -0.13 for the two P_T s respectively, and the p -values being 1.4×10^{-3} and 2.3×10^{-3} respectively. The correlations also persisted when the analysis was repeated for NS thresholds of 1–12.

All these results are shown in [Figure 8](#).

As mentioned earlier, the *minP* procedure was used to calculate the permutation-corrected p -values for the P_T thresholds. The related p -values are given in Section A of the [Supplementary Material](#). They remained statistically significant for all the cases above, with the exception of the correlation between the mean betweenness centrality of the visual network and the PRS for plasma lipoprotein particle assembly excluding *APOE* for $P_T = 0.3$, and the correlation between the feeder connectivity and the genome-wide PRS excluding *APOE* for $P_T = 0.3$. Additionally, the values of the correlation coefficients for the thresholds between 1 and 12 are given in Section B of the [Supplementary Material](#).

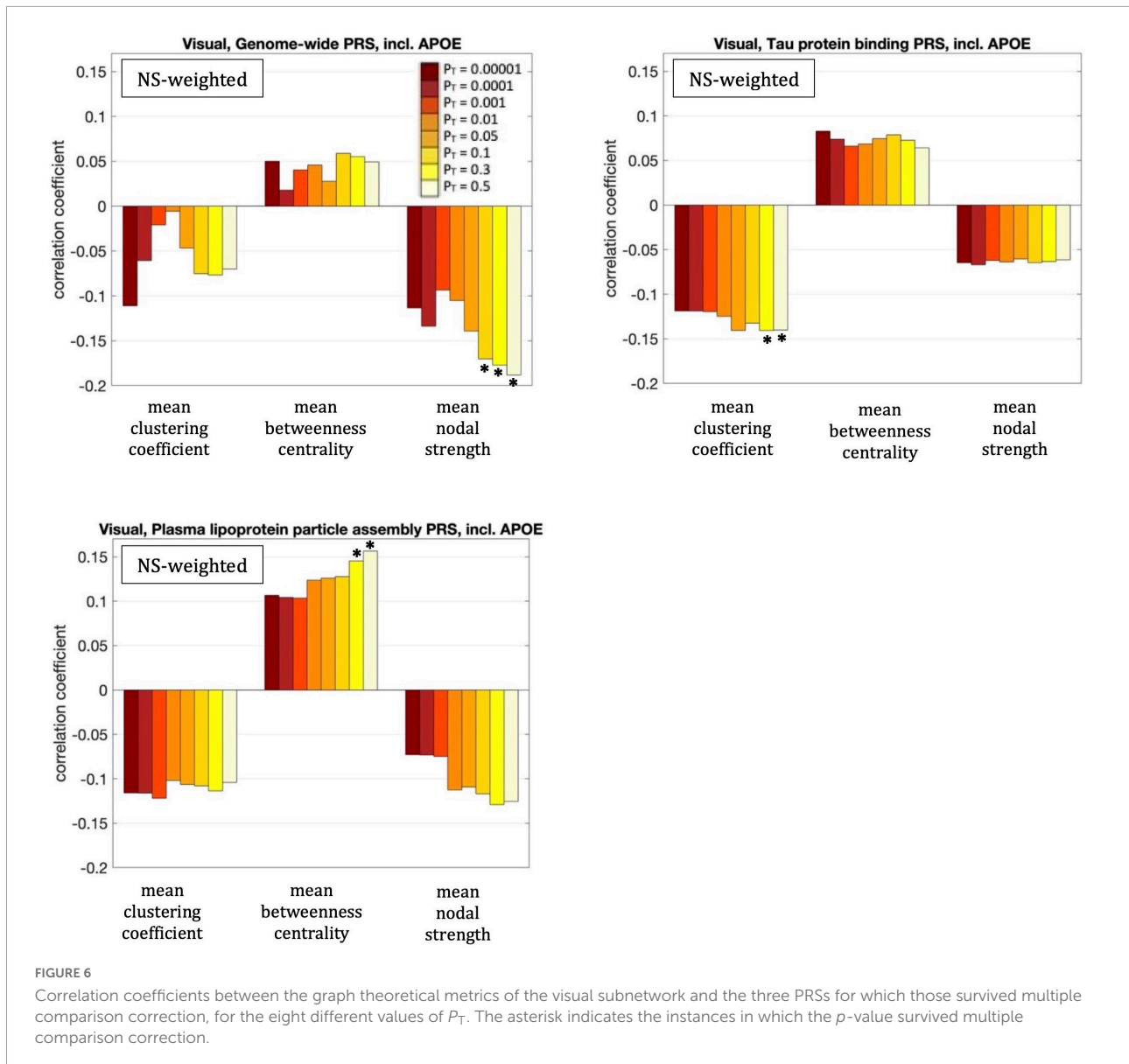
Discussion

To the best of our knowledge, this is the first study to examine the relationship between AD PRS and network-based measures for the whole-brain structural connectome and subnetworks. We used a cohort of young participants to assess

any potential early changes in the structural connectome. From a clinical perspective, using pathway-specific PRSs in addition to genome-wide ones is important, because it can pave the way for more targeted interventions based on the predicted pathway involvement and potentially allow clinical trials to stratify patients using their specific risk profiles.

Compared to the FA-weighted networks, using NS-weighted networks resulted in more statistically significant relationships between the PRS and structural network metrics, such as the graph theoretical metrics we employed and the connectivity strength between the rich-club, and feeder connections. Even though both the NS and the FA are routinely used to assign significance to the edges of structural networks, it has been argued ([Huang and Ding, 2016](#)) and proven experimentally ([Messaritaki et al., 2021](#)) that the NS is more relevant from a functional perspective to the network organization of the human brain compared to the FA. This may be contributing to the increased sensitivity of the NS in the differences observed in our study. Other metrics have also been used as edge-weights, such as the inverse radial diffusivity ([Caeyenberghs et al., 2016; Messaritaki et al., 2022](#)), which captures myelination and axonal packing and is, therefore, also meaningful in assessing connectivity. From a methodological point of view, this demonstrates that the selection of the metric for the edge weights can impact the results and, if not optimal, it can fail to reveal certain statistically significant relationships. As the capabilities of MRI to measure microstructural metrics evolves ([Wolff and Balaban, 1989; Mackay et al., 1994; Assaf and Basser, 2005; Barazany et al., 2009; Zhang H. et al., 2012](#)), using these and other measures (e.g., myelin, axonal density and axon diameter) as edge weights should also be explored.

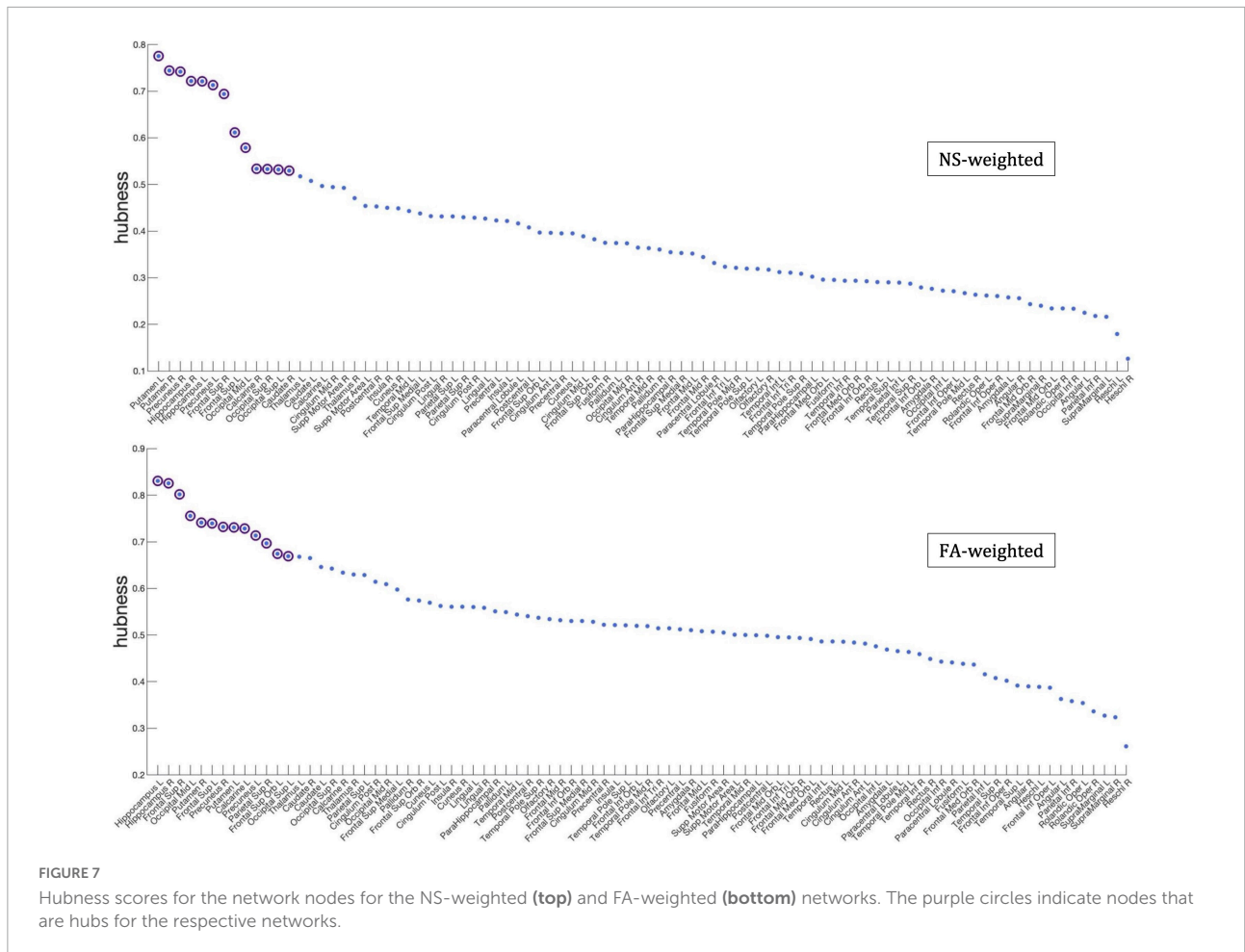
Our analysis identified statistically significant (after correction for multiple comparisons) correlations between



graph theoretical metrics and PRS, present in the DMN. The negative correlation between the mean nodal strength and the genome-wide PRS for the NS-weighted DMN indicates that high genome-wide risk of AD results in lower nodal strength in that network. Furthermore, the fact that the correlation persisted when the *APOE* locus was removed from the analysis indicates that this relationship is a result of multiple genetic factors and not exclusively due to the *APOE* gene.

Our analysis also revealed statistically significant (after multiple-comparison correction) correlations between the graph theoretical metrics of the NS-weighted visual subnetwork and the PRSs. The negative correlation between the mean nodal strength and the genome-wide PRS (including *APOE*) implies weaker connectivity in the visual subnetwork of participants at higher risk of developing AD. The negative correlation

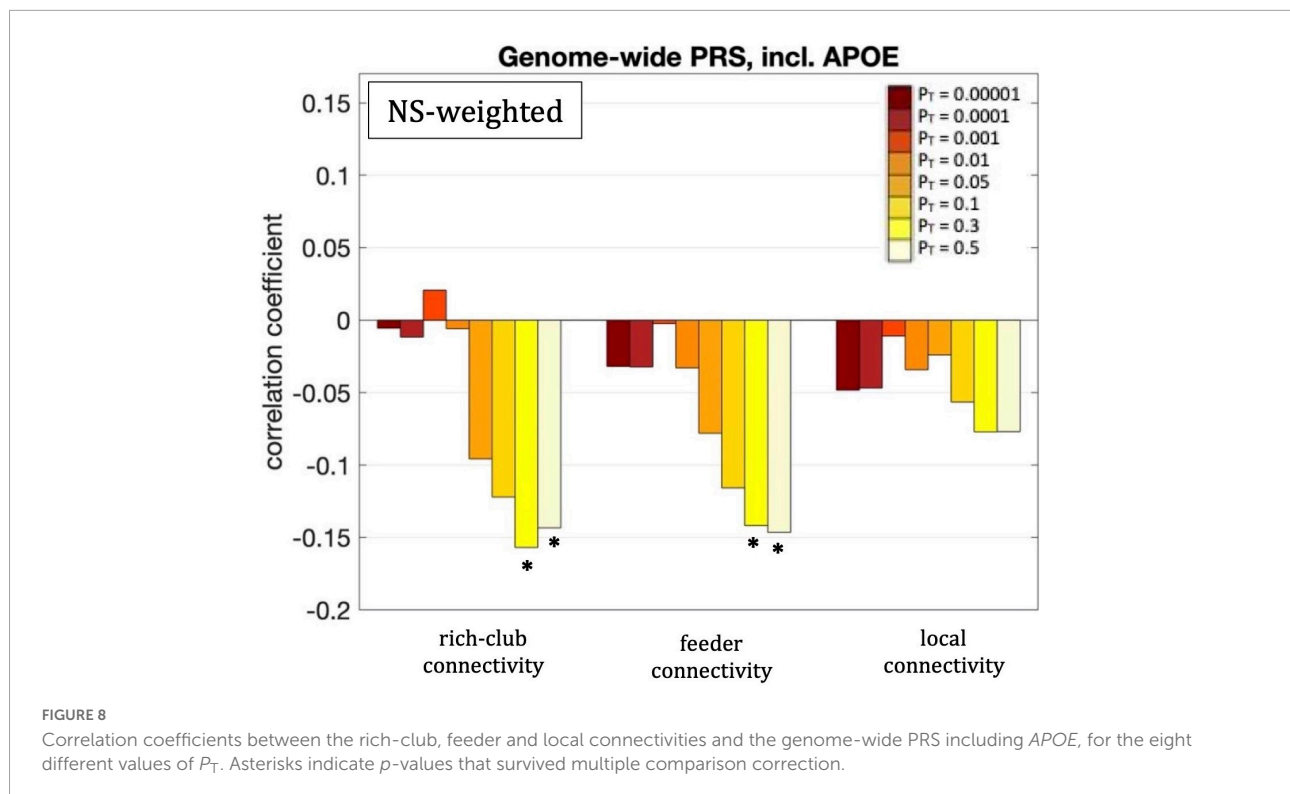
between the mean clustering coefficient and the tau protein binding PRS (including *APOE*) indicates that participants at higher risk of developing AD through this pathway have less clustered communities in the visual subnetwork. The positive correlation between the mean betweenness centrality and the PRS for plasma lipoprotein particle assembly (including *APOE*) implies that, in participants at higher risk of developing AD, each node participates in more shortest paths and therefore the organization of the visual subnetwork is less central compared to participants at low risk. The fact that the first and third of these correlations persisted when the *APOE* locus was excluded from the genetic risk calculation indicates that they are a result of multiple genetic factors, and not exclusively due to the *APOE* gene. The second correlation, however, appears to be driven predominantly by the *APOE* gene.



Studies of young adults with genetic predisposition to AD are still limited, and predominantly involve brain function rather than structure. As mentioned earlier, increased functional connectivity and hippocampal activation in a memory task was observed in the DMN of young, cognitively normal *APOE4* carriers (Filippini et al., 2009). This finding was not, however, replicated in a study by Mentink et al. (2021), which instead found that compared to non-carriers, *APOE4* young carriers had increased functional activation in facial-recognition areas during the encoding of subsequently recollected items. Young *APOE4* carriers also showed increased activation (measured via fMRI) in the medial temporal lobe compared to non-carriers, while performing a memory task (Dennis et al., 2010). In contrast to these studies which focused on the DMN, the majority of our findings pertained to the visual network. Additionally, observing small changes in the NS-weighted and FA-weighted structural networks does not necessarily imply the presence of measurable functional deficiencies (which also depends on the sensitivity of those functional studies). Functional connectivity is believed to be also reliant on a number of other microstructural metrics (such as myelination and axonal density) which could be compensating for changes present in the NSs.

As mentioned earlier, alterations in the visual subnetwork of AD patients have been recently reported in the literature. For example, Deng et al. (2016) observed increased characteristic path length and clustering coefficient in the visual subnetwork (measured with BOLD fMRI) of AD patients. Badhwar et al. (2017) also observed decreased connectivity in the primary visual cortex of AD patients. Wang et al. (2019) observed impairments in the visual subnetwork of AD patients, as well as in patients with subjective cognitive decline, which is considered a prodromal stage of AD. This last result further supports the idea that alterations in the visual subnetwork can appear many years before AD diagnosis.

We also observed statistically significant correlations (after multiple-comparison correction) between the rich-club and feeder connectivities of the NS-weighted whole-brain network and the genome-wide PRS, including *APOE*. These negative correlations indicate that structural connections that involve at least one hub node are weaker in the brains of young participants at risk of developing AD. The relationships held when the *APOE* locus was excluded from the analysis, which indicates that the effect comes from genetic influences above and beyond *APOE*.



A few studies have reported altered connectivity of the rich-club and feeder edges in the structural brain networks of participants with AD and with MCI. Xue et al. (2020) recently observed reduced rich-club connectivity in patients with amnesic MCI compared to healthy age-matched controls, and reduced feeder and local connectivity in patients with amnesic MCI compared to participants with subjective cognitive decline. Cai et al. (2019) reported decreased feeder (and local) connection strength in the structural networks of AD patients compared to healthy controls. Our results are in line with these alterations in connectivity strength observed in AD and MCI patients.

It is interesting that we observed decreased clustering coefficient with increased AD risk, while AD studies (He et al., 2008; Lo et al., 2010; Deng et al., 2016) observed increased clustering coefficient in AD patients. However, it is not uncommon that a pattern of structural or functional metrics is observed in at-risk populations, for that pattern to be reversed when the pathology is realized. Specifically for AD for example, Koelewijn et al. (2019) observed that young *APOE* carriers exhibited hyperconnectivity in brain areas that were found, in the same work, to show hypoconnectivity in AD patients. We also note that the structural networks in He et al. (2008) were structural covariance networks rather than tractography-derived networks, and that Lo et al. (2010) had a small sample of 25 patients and 30 controls in their tractography study. Also, Deng et al. (2016) used functional MRI rather than diffusion MRI and had a much smaller sample than ours.

The rest of the graph theoretical metrics we investigated showed no statistically significant correlations after multiple comparison correction was applied. Recently, Foley et al. (2017) showed that there is a reduction in the FA of the right cingulum and a decrease in the left hippocampal volume of young adults at genetic risk of developing AD. In this context, our results imply that those alterations do not translate into changes in the structural brain networks and subnetworks of those young adults. We note, however, that the participants in that study included participants that were a few years older compared to those in our study.

The correlations observed in our analysis are small, in the range of 0.14–0.19 (in absolute value). This is to be expected, given that the cohort of our study consisted of young adults with normal brain function.

We note that the summary statistics used in PRS analysis were taken from a large discovery sample reported in the latest GWAS meta-analysis (Kunkle et al., 2019). Therefore, our risk estimates for AD loci are the best available. We computed PRS in our sample manually in PLINK, rather than using automated PRS tools. This gives us the ability to specify several exact parameters which can be difficult with automated PRS tools. Furthermore, these automatic tools have precalculated SNPs linkage disequilibrium scores. They often use only 1 million SNPs, whereas the current GWASes have 4–8 million SNPs available. Our study employed a relatively large sample size comprising participants of the same age (19.81 ± 0.02 years old), therefore avoiding the confound

of brain changes that are age related, and which are known to exist in young adults up to the age of at least 25 years. Furthermore, our study is the first to use disease pathway PRS to explore associations between biological pathways and underlying differences in structural brain connectivity. We used two different edge weights, NS and FA, in our analysis. These metrics are the most widely used in the literature to weigh the edges of structural networks. It is worth pointing out that some graph theoretical metrics are dependent on the choice of edge weighting (such as the clustering coefficient and the nodal strength), while others are not (such as the node degree). Furthermore, we could have calculated correlations for other graph theoretical metrics, however, we chose to limit our choice as described in the “Materials and Methods” section, in order to avoid multiple comparison corrections forcing us to reject results that are truly statistically significant. We also note that changes in the topological properties of brain networks can be complex and due to a number of factors, such as, for example, volumetric changes, which could exhibit themselves as altered connectivity. Regarding the pathway-specific PRS, the accuracy of our results is limited by the current knowledge of pathway variants. Additionally, our study involved a geographically limited sample in which men are slightly over-represented. Therefore, our results may not be representative of the general population. We note that the AAL atlas that we used is one of a few atlases that could have been used to conduct the analysis. Recent studies have shown how results from tractography studies could be dependent on the choice of atlas (Parker et al., 2014). Finally, participants of non-European ethnicity were excluded from the analysis because polygenic score analyses in populations with high genetic admixture are not valid. Even small differences in population genetics may lead to distinctive linkage disequilibrium (LD) structure and allele frequencies (Moskvina et al., 2010). Pruning, an essential part of PRS calculation, relies on LD structure to retain SNPs that are most associated with a trait while removing others that are closely linked. Where LD structure diverges, alternative SNPs will be selected. This means that ethnicity admixture must be avoided and comparisons between population groups using PRS are not valid. This further implies that the findings of our study may not generalize to other ethnicities. Around 2% of ALSPAC participants were non-white (Fraser et al., 2013).

Conclusion

Our results demonstrate that genetic burden is linked to changes in structural brain networks, both for the whole-brain connectome and the visual subnetwork, in young adults. The genome-wide PRS including *APOE* was linked to a reduction in the mean nodal strength of the visual subnetwork and of the rich-club and feeder connections of the whole-brain network. The plasma-lipoprotein particle assembly PRS including *APOE* was linked to an increase in the betweenness centrality of

the visual subnetwork. Importantly, these relationships were still present, albeit slightly weaker, when the *APOE* locus was excluded from the analysis. This indicates that the search for AD biomarkers can benefit from the consideration of genetic risk above and beyond *APOE*. Different biomarkers could point to different pathway involvement, which could allow clinical trials to stratify patients accordingly. Specifically for the pathway-specific PRS, it is not currently known exactly how these biological processes relate to brain networks, and this is incredibly complicated to decipher. As such, this work points to possible directions that researchers can look into in future studies.

Data availability statement

The original contributions presented in the study are publicly available. The study website contains details of all the data that is available through a fully searchable data dictionary and variable search tool (<http://www.bristol.ac.uk/alspac/researchers/our-data>). Further inquiries can be directed to the corresponding author.

Ethics statement

This study was reviewed and approved by the ALSPAC Ethics and Law Committee and the local NHS Research Ethics Committees. Written informed consent was collected for all participants in line with the Declaration of Helsinki. Informed consent for the use of data collected via questionnaires and clinics was obtained from participants following the recommendations of the ALSPAC Ethics and Law Committee at the time.

Author contributions

AM-D contributed to the data analysis and wrote the manuscript. SF contributed to data curation, preprocessing and data analysis. XC, EB, PH, and VE-P contributed to the analysis of the genetic data. DJ contributed to the study design. JH and EM contributed to the study design, genetic data analysis, and wrote the manuscript. All authors contributed to the article and approved the submitted version.

Funding

The UK Medical Research Council and Wellcome (Grant ref: 217065/Z/19/Z) and the University of Bristol provide core support for ALSPAC. This publication is the work of the authors, and the authors will serve as guarantors for the contents of the manuscript. This research was funded in whole, or in part, by the Wellcome Trust (Grant numbers: 204824/Z/16/Z, 096646/Z/11/Z, 104943/Z/14/Z, 203918/Z/16/Z). For the

purpose of Open Access, the authors has applied a CC BY public copyright license to any Author Accepted Manuscript version arising from this submission. A comprehensive list of grants funding is available on the ALSPAC website (<http://www.bristol.ac.uk/alspac/external/documents/grant-acknowledgements.pdf>). EM was partly funded by a Wellcome Trust ISSF Postdoctoral Research Fellowship at Cardiff University (204824/Z/16/Z). EM was also supported by the BRAIN Biomedical Research Unit which is funded by Health and Care Research Wales. DJ was funded by a Wellcome Trust Investigator Award (096646/Z/11/Z) and a Wellcome Trust Strategic Award (104943/Z/14/Z). JH was funded by a Wellcome Trust GW4 Clinical Academic Fellowship (203918/Z/16/Z). SF was funded on an Institutional Strategic Support Fund Grant No. 504182 awarded to Cardiff University by the Wellcome Trust. PH was funded by a Medical Research Council Award (MR/L010305/1) at the MRC Centre for Neuropsychiatric Genetics and Genomics at Cardiff University. VE-P and EB were funded by the Dementia Research Institute [UKDRI supported by the Medical Research Council (UKDRI-3003), Alzheimer's Research UK, and Alzheimer's Society], the Welsh Government, Joint Programming for Neurodegeneration (MRC: MR/T04604X/1), Dementia Platforms UK (MRC: MR/L023784/2), and MRC Centre for Neuropsychiatric Genetics and Genomics (MR/L010305/1).

Acknowledgments

We are extremely grateful to the families that took part in this study, the midwives for their help in recruiting them, and

References

- Ahmad, S., Bannister, C., van der Lee, S. J., Vojinovic, D., Adams, H. H. H., Ramirez, A., et al. (2018). Disentangling the biological pathways involved in early features of Alzheimer's disease in the Rotterdam Study. *Alzheimers Dement.* 14, 848–857. doi: 10.1016/j.jalz.2018.01.005
- Afzali, M., Knutsson, H., Ozarslan, E., and Jones, D. K. (2021). Computing the orientational-average of diffusion-weighted MRI signals: A comparison of different techniques. *Sci. Rep.* 11:14345. doi: 10.1038/s41598-021-93558-1
- Altmann, A., Scelsi, M. A., Shoai, M., de Silva, E., Aksman, L. M., Cash, D. M., et al. (2020). A comprehensive analysis of methods for assessing polygenic burden in Alzheimer's disease pathology and risk beyond APOE. *Brain Commun.* 2:fcz047. doi: 10.1093/braincomms/fcz047
- Arnatkeviciute, A., Fulcher, B. D., Oldham, S., Tiego, J., Paquola, C., Gerring, Z., et al. (2021). Genetic influences on hub connectivity of the human connectome. *Nat. Commun.* 12:4237. doi: 10.1038/s41467-021-24306-2
- Assaf, Y., and Basser, P. J. (2005). Composite hindered and restricted model of diffusion (CHARMED) MR imaging of the human brain. *Neuroimage* 25, 48–58. doi: 10.1016/j.neuroimage.2005.03.042
- Badhwar, A. P., Tam, A., Dansereau, C., Orban, P., Hoffstaedter, F., and Bellec, P. (2017). Resting-state network dysfunction in Alzheimer's disease: A systematic review and meta-analysis. *Alzheimers Dement.* 8, 73–85. doi: 10.1016/j.dadm.2017.03.007
- Barazany, D., Basser, P. J., and Assaf, Y. (2009). In vivo measurement of axon diameter distribution in the corpus callosum of rat brain. *Brain* 132, 1210–1220. doi: 10.1093/brain/awp042
- Benjamini, Y., and Yekutieli, D. (2005). False discover rate-adjusted multiple confidence intervals for selected parameters. *J. Am. Stat. Assoc.* 100, 71–81. doi: 10.1198/016214504000001907
- Betzel, R. F., Byrge, L., He, Y., Goni, J., Zuo, X.-N., and Sporns, O. (2014). Changes in structural and functional connectivity among resting-state networks across the human lifespan. *Neuroimage* 102, 345–357. doi: 10.1016/j.neuroimage.2014.07.067
- Boyd, A., Golding, J., Macleod, J., Lawlor, D. A., Fraser, A., Henderson, J., et al. (2013). Cohort profile: The 'children of the 90s'—the index offspring of the avon longitudinal study of parents and children. *Int. J. Epidemiol.* 42, 111–127. doi: 10.1093/ije/dys064
- Brown, J. A., Terashima, K. H., Burggren, A. C., Ercoli, L. M., Miller, K. J., Small, G. W., et al. (2011). Brain network local interconnectivity loss in aging APOE4 allele carriers. *Proc. Natl. Acad. Sci. U.S.A.* 108, 20760–20765. doi: 10.1073/pnas.1109038108
- Caeyenberghs, K., Metzler-Baddeley, C., Foley, S., and Jones, D. K. (2016). Dynamics of the human structural connectome underlying working memory training. *J. Neurosci.* 36, 4056–4066. doi: 10.1523/JNEUROSCI.1973-15.2016
- Cai, S., Huang, K., Kang, Y., Jiang, Y., von Deneen, K. M., and Huang, L. (2019). Potential biomarkers for distinguishing people with Alzheimer's disease from

the whole ALSPAC team, which includes interviewers, computer and laboratory technicians, clerical workers, research scientists, volunteers, managers, receptionists, and nurses. The authors also wish to thank Maryam Afzali for useful discussions.

Conflict of interest

The authors declare that the research was conducted in the absence of any commercial or financial relationships that could be construed as a potential conflict of interest.

Publisher's note

All claims expressed in this article are solely those of the authors and do not necessarily represent those of their affiliated organizations, or those of the publisher, the editors and the reviewers. Any product that may be evaluated in this article, or claim that may be made by its manufacturer, is not guaranteed or endorsed by the publisher.

Supplementary material

The Supplementary Material for this article can be found online at: <https://www.frontiersin.org/articles/10.3389/fnins.2022.987677/full#supplementary-material>

- cognitively intact elderly based on the rich-club hierarchical structure of white matter networks. *Neurosci. Res.* 144, 56–66. doi: 10.1016/j.neures.2018.07.005
- Caspers, S., Rockner, M. E., Jockwitz, C., Bittner, N., Teumer, A., Herms, S., et al. (2020). Pathway-specific genetic risk for Alzheimer's disease differentiates regional patterns of cortical atrophy in older adults. *Cereb. Cortex* 30, 801–811. doi: 10.1093/cercor/bhz127
- Chang, C. C., Chow, C. C., Tellier, L. C., Vattikuti, S., Purcell, S. M., and Lee, J. J. (2015). Second-generation PLINK: Rising to the challenge of larger and richer datasets. *Gigascience* 4:7. doi: 10.1186/s13742-015-0047-8
- Chang, L. C., Jones, D. K., and Pierpaoli, C. (2005). RESTORE: Robust estimation of tensors by outlier rejection. *Magn. Reson. Med.* 53, 1088–1095. doi: 10.1002/mrm.20426
- Chaudhury, S., Patel, T., Barber, I. S., Guetta-Baranes, T., Brookes, K. J., Chappell, S., et al. (2018). Polygenic risk score in postmortem diagnosed sporadic early-onset Alzheimer's disease. *Neurobiol. Aging* 62, e1–e244. doi: 10.1016/j.neurobiolaging.2017.09.035
- Clarke, H. J., Messaritaki, E., Dimitriadis, S. I., and Metzler-Baddeley, C. (2020). Dementia risk factors modify hubs but leave other connectivity measures unchanged in asymptomatic individuals: A graph theoretical analysis. *Brain Connect.* 12, 26–40. doi: 10.1089/brain.2020.0935
- Cook, R. D. (1977). Detection of influential observations in linear regression. *Technometrics* 19, 15–18. doi: 10.1080/00401706.1977.10489493
- Corlier, F., Hafzalla, G., Faskowitz, J., Kuller, L. H., Becker, J. T., Lopez, O. L., et al. (2018). Systemic inflammation as a predictor of brain aging: Contributions of physical activity, metabolic risk, and genetic risk. *Neuroimage* 172, 118–129. doi: 10.1016/j.neuroimage.2017.12.027
- Cruchaga, C., Del-Aguila, J. L., Saef, B., Black, K., Fernandez, M. V., Budde, J., et al. (2018). Polygenic risk score of sporadic late-onset Alzheimer's disease reveals a shared architecture with the familial and early-onset forms. *Alzheimers Dement.* 14, 205–214. doi: 10.1016/j.jalz.2017.08.013
- Dai, Z., Lin, Q., Li, T., Wang, X., Yuan, H., Yu, X., et al. (2019). Disrupted structural and functional brain networks in Alzheimer's disease. *Neurobiol. Aging* 75, 71–82. doi: 10.1016/j.neurobiolaging.2018.11.005
- de Leeuw, C. A., Mooij, J. M., Heskes, T., and Posthuma, D. (2015). MAGMA: Generalized gene-set analysis of GWAS data. *PLoS Comput. Biol.* 11:e1004219. doi: 10.1371/journal.pcbi.1004219
- Dell'acqua, F., Scifo, P., Rizzo, G., Catani, M., Simmons, A., Scotti, G., et al. (2010). A modified damped Richardson-Lucy algorithm to reduce isotropic background effects in spherical deconvolution. *Neuroimage* 49, 1446–1458. doi: 10.1016/j.neuroimage.2009.09.033
- Deng, Y., Shi, L., Li, Y., Wang, D., and Alzheimer's Disease Neuroimaging Initiative (2016). Altered topological organization of high-level visual networks in Alzheimer's disease and mild cognitive impairment patients. *Neurosci. Lett.* 630, 147–153. doi: 10.1016/j.neulet.2016.07.043
- Dennis, N. A., Browndyke, J. N., Stokes, J., Need, A., Burke, J. R., Welsh-Bohmer, K. A., et al. (2010). Temporal lobe functional activity and connectivity in young adult APOE4 carriers. *Alzheimers Dement.* 6, 303–311. doi: 10.1016/j.jalz.2009.07.003
- Dimitriadis, S., Messaritaki, E., and Jones, D. K. (2021). The impact of graph construction scheme and community detection algorithm on the repeatability of community and hub identification in structural brain networks. *Hum. Brain Mapp.* 42, 4261–4280. doi: 10.1002/hbm.25545
- Drakesmith, M., Caeyenberghs, K., Dutt, A., Zammit, S., Evans, C. J., Reichenberg, A., et al. (2015). Schizophrenia-like topological changes in the structural connectome of individuals with subclinical psychotic experiences. *Hum. Brain Mapp.* 36, 2629–2643. doi: 10.1002/hbm.22796
- Drakesmith, M., Dutt, A., Fonville, L., Zammit, S., Reichenberg, A., Evans, C. J., et al. (2016). Volumetric, relaxometric and diffusometric correlates of psychotic experiences in a non-clinical sample of young adults. *Neuroimage Clin.* 12, 550–558. doi: 10.1016/j.nicl.2016.09.002
- Drakesmith, M., Parker, G. D., Smith, J., Linden, S. C., Rees, E., Williams, N., et al. (2019). Genetic risk for schizophrenia and developmental delay is associated with shape and microstructure of midline white matter structures. *Transl. Psychiatry* 9:102. doi: 10.1038/s41398-019-0440-7
- Escott-Price, V., Myers, A. J., Huentelman, M., and Hardy, J. (2017). Polygenic risk score analysis of pathologically confirmed Alzheimer's disease. *Ann. Neurol.* 82, 311–314. doi: 10.1002/ana.24999
- Escott-Price, V., Sims, R., Bannister, C., Harold, D., Vronskaya, M., Majounie, E., et al. (2015). Common polygenic variation enhances risk prediction for Alzheimer's disease. *Brain* 138, 3673–3684. doi: 10.1093/brain/awv268
- Farrer, L. A., Cupples, L. A., Haines, J. L., Hyman, B., Kukull, W. A., Mayeux, R., et al. (1997). Effects of age, sex, and ethnicity on the association between apolipoprotein E genotype and Alzheimer's disease. A meta-analysis. APOE and Alzheimer disease meta analysis consortium. *JAMA* 278, 1349–1356. doi: 10.1001/jama.1997.03550160069041
- Filippini, N., Machintosh, B. J., Hough, M. G., Goodwin, G. M., Frisoni, G. B., Smith, S. M., et al. (2009). Distinct patterns of brain activity in young carriers of the APOE-epsilon4 allele. *Proc. Natl. Acad. Sci. U.S.A.* 106, 7209–7214. doi: 10.1073/pnas.0811879106
- Fleisher, A. S., Sherzai, A., Taylor, C., Langbaum, J. B., Chen, K., and Buxton, R. B. (2009). Resting-state BOLD networks versus task-associated functional MRI for distinguishing Alzheimer's disease risk groups. *Neuroimage* 47, 1678–1690. doi: 10.1016/j.neuroimage.2009.06.021
- Foley, S. F., Bracher-Smith, M., Tansey, K. E., Harrison, J. R., Parker, G. D., and Caseras, X. (2018). Fractional anisotropy of the uncinate fasciculus and cingulum in bipolar disorder type I, type II, unaffected siblings and healthy controls. *Br. J. Psychiatry* 213, 548–554. doi: 10.1192/bjp.2018.101
- Foley, S. F., Tansey, K. E., Caseras, X., Lancaster, T., Bracht, T., Parker, G., et al. (2017). Multimodal brain imaging reveals structural differences in Alzheimer's disease polygenic risk carriers: A study in healthy young adults. *Biol. Psychiatry* 81, 154–161. doi: 10.1016/j.biopsych.2016.02.033
- Fonville, L., Cohen Kadosh, K., Drakesmith, M., Dutt, A., Zammit, S., Mollon, J., et al. (2015). Psychotic experiences, working memory, and the developing brain: A multimodal neuroimaging study. *Cereb. Cortex* 25, 4828–4838. doi: 10.1093/cercor/bhv181
- Fraser, A., Macdonald-Wallis, C., Tilling, K., Boyd, A., Golding, J., Davey Smith, G., et al. (2013). Cohort profile: The Avon longitudinal study of parents and children: ALSPAC mothers cohort. *Int. J. Epidemiol.* 42, 97–110. doi: 10.1093/ije/dys066
- Gatz, M., Reynolds, C. A., Fratiglioni, L., Johansson, B., Mortimer, J. A., Berg, S., et al. (2006). Roles of genes and environments for explaining Alzheimer's disease. *Arch. Gen. Psychiatry* 63, 168–174. doi: 10.1001/archpsyc.63.2.168
- Goni, J., van den Heuvel, M. P., Avena-Koenigsberger, A., Veles de Mendizabal, N., Betzel, R. F., Griffa, A., et al. (2014). Resting-brain functional connectivity predicted by analytic measures of network communication. *Proc. Natl. Acad. Sci. U.S.A.* 111, 833–838. doi: 10.1073/pnas.1315529111
- Goveas, J. S., Xie, C., Chen, G., Li, W., Ward, B. D., Franczak, M. B., et al. (2013). Functional network endophenotypes unravel the effects of apolipoprotein E epsilon 4 in middle-aged adults. *PLoS One* 8:e55902. doi: 10.1371/journal.pone.0055902
- Hansson, O., Grothe, M. J., Strandberg, T. O., Ohlsson, T., Hagerstrom, D., Jogi, J., et al. (2017). Tau pathology distribution in Alzheimer's disease corresponds differentially to cognition-relevant functional brain networks. *Front. Neurosci.* 11:167. doi: 10.3389/fnins.2017.00167
- Harrison, J. R., Mistry, S., Muskett, N., and Escott-Price, V. (2020). From polygenic scores to precision medicine in Alzheimer's disease: A systematic review. *J. Alzheimers Dis.* 74, 1271–1283. doi: 10.3233/JAD-191233
- Harrison, T. M., Mahmood, Z., Lau, E. P., Karacozoff, A. M., Burggren, A. C., Small, G. W., et al. (2016). "An Alzheimer's disease genetic risk score predicts longitudinal thinning of hippocampal complex subregions in healthy older adults. *eNeuro* 3, 795–804. doi: 10.1523/ENEURO.0098-16.2016
- Hayes, J. P., Logue, M. W., Sadeh, N., Spielberg, J. M., Verfaellie, M., Hayes, S. M., et al. (2017). Mild traumatic brain injury is associated with reduced cortical thickness in those at risk of Alzheimer's disease. *Brain* 140, 813–825. doi: 10.1093/brain/aww344
- He, Y., Chen, Z., and Evans, A. (2008). Structural insights into aberrant topological patterns of large-scale cortical networks in Alzheimer's disease. *J. Neurosci.* 28, 4756–4766. doi: 10.1523/JNEUROSCI.0141-08.2008
- Honey, C. J., Sporns, O., Cammoun, L., Gigandet, X., Thiran, J. P., Meuli, R., et al. (2009). Predicting human resting-state functional connectivity from structural connectivity. *Proc. Natl. Acad. Sci. U.S.A.* 106, 2035–2040. doi: 10.1073/pnas.0811168106
- Huang, H., and Ding, M. (2016). Linking functional connectivity and structural connectivity quantitatively: A comparison of methods. *Brain Connect.* 6, 99–108. doi: 10.1089/brain.2015.0382
- Irfanoglu, M. O., Walker, L., Sarlls, J., Marengo, S., and Pierpaoli, C. (2012). Effects of image distortions originating from susceptibility variations and concomitant fields on diffusion MRI tractography results. *Neuroimage* 61, 275–288. doi: 10.1016/j.neuroimage.2012.02.054
- John, M., Ikuta, T., and Ferbinteanu, J. (2017). Graph analysis of structural brain networks in Alzheimer's disease: Beyond small world properties. *Brain Struct. Funct.* 222, 923–942. doi: 10.1007/s00429-016-1255-4
- Jones, D. K., Horsfield, M. A., and Simmons, A. (1999). Optimal strategies for measuring diffusion in anisotropic systems by magnetic resonance imaging.

- Magn. Reson. Med. 42, 515–525. doi: 10.1002/(SICI)1522-2594(199909)42:3<515::AID-MRM14>3.0.CO;2-Q
- Jones, L., Holmans, P. A., Hamshere, M. L., Harold, D., Moskvina, V., Ivanov, D., et al. (2010). Genetic evidence implicates the immune system and cholesterol metabolism in the aetiology of Alzheimer's disease. *PLoS One* 5:e13950. doi: 10.1371/journal.pone.0013950
- Koelewijn, L., Lancaster, T. M., Linden, D., Dima, D. C., Routley, B. C., Magazzini, L., et al. (2019). Oscillatory hyperactivity and hyperconnectivity in young APOE-epsilon4 carriers and hypoconnectivity in Alzheimer's disease. *Elife* 8:e36011. doi: 10.7554/eLife.36011
- Kunkle, B. W., Grenier-Boley, B., Sims, R., Bis, J. C., Damotte, V., Naj, A. C., et al. (2019). Genetic meta-analysis of diagnosed Alzheimer's disease identifies new risk loci and implicates A β , tau, immunity and lipid processing. *Nat. Genet.* 51, 414–430. doi: 10.1038/s41588-019-0358-2
- Lambert, J. C., Ibrahim-Verbaas, C. A., Harold, D., Naj, A. C., Sims, R., Bellenguez, C., et al. (2013). Meta-analysis of 74,046 individuals identifies 11 new susceptibility loci for Alzheimer's disease. *Nat. Genet.* 45, 1452–1458. doi: 10.1038/ng.2802
- Lancaster, T. M., Dimitriadis, S., Tansey, K. E., Perry, G., Ihssen, N., Jones, D. K., et al. (2019). Structural and functional neuroimaging of polygenic risk for schizophrenia: A recall-by-genotype-based approach. *Schizophr. Bull.* 45, 405–414. doi: 10.1093/schbul/sby037
- Le Bihan, D., Poupon, C., Amadon, A., and Lethimonnier, F. (2006). Artifacts and pitfalls in diffusion MRI. *J. Magn. Reson. Imaging* 24, 478–488. doi: 10.1002/jmri.20683
- Leemans, A., and Jones, D. K. (2009). The B-matrix must be rotated when correcting for subject motion in DTI data. *Magn. Reson. Med.* 61, 1336–1349. doi: 10.1002/mrm.21890
- Leemans, A., Jeurissen, B., Sijbers, J., and Jones, D. K. (2009). "ExploreDTI: A graphical toolbox for processing, analysing and visualizing diffusion MRI data," in *Proceedings of the 17th annual meeting of the international society for magnetic resonance in medicine*, Vol. 3537, Honolulu, HI.
- Li, J., Zhang, X., Li, A., Liu, S., Qin, W., Yu, C., et al. (2018). Polygenic risk for Alzheimer's disease influences precuneal volume in two independent general populations. *Neurobiol. Aging* 64, 116–122. doi: 10.1016/j.neurobiolaging.2017.12.022
- Liao, Z., Patel, Y., Khairullah, A., Parker, N., and Paus, T. (2021). Pubertal testosterone and the structure of the cerebral cortex in young men. *Cereb. Cortex* 31, 2812–2821. doi: 10.1093/cercor/bhaa389
- Lo, C. Y., Wang, P. N., Chou, K. H., Wang, J., He, Y., and Lin, C. P. (2010). Diffusion tensor tractography reveals abnormal topological organization in structural cortical networks in Alzheimer's disease. *J. Neurosci.* 30, 16876–16885. doi: 10.1523/JNEUROSCI.4136-10.2010
- Lupton, M. K., Strike, L., Hansell, N. K., Wen, W., Mather, K. A., Armstrong, N. J., et al. (2016). The effect of increased genetic risk for Alzheimer's disease on hippocampal and amygdala volume. *Neurobiol. Aging* 40, 68–77. doi: 10.1016/j.neurobiolaging.2015.12.023
- Ma, C., Wang, J., Zhang, J., Chen, K., Li, X., Shu, N., et al. (2017). Disrupted brain structural connectivity: Pathological interactions between genetic APOE ϵ 4 status and developed MCI condition. *Mol. Neurobiol.* 54, 6999–7007. doi: 10.1007/s12035-016-0224-5
- Mackay, A., Whittall, K., Adler, J., Li, D., Paty, D., and Graeb, D. (1994). In vivo visualization of myelin water in brain by magnetic resonance. *Magn. Reson. Med.* 31, 673–677. doi: 10.1002/mrm.1910310614
- Mentink, L. J., Guimaraes, J. P. O. F. T., Faber, M., Sprooten, E., Olde Rikkert, M. G. M., Haak, K. V., et al. (2021). Functional co-activation of the default mode network in APOE epsilon-4 carriers: A replication study. *Neuroimage* 240:118304. doi: 10.1016/j.neuroimage.2021.118304
- Messaritaki, E., Dimitriadis, S. I., and Jones, D. K. (2019). Optimization of graph construction can significantly increase the power of structural brain network studies. *Neuroimage* 199, 495–511. doi: 10.1016/j.neuroimage.2019.05.052
- Messaritaki, E., Foley, S., Barawi, K., Ettinger, U., and Jones, D. K. (2022). Increased structural connectivity in high schizotypy. *bioRxiv* [Preprint]. doi: 10.1101/2022.05.12.491533
- Messaritaki, E., Foley, S., Schiavi, S., Magazzini, L., Routley, B., Jones, D. K., et al. (2021). Predicting MEG resting-state functional connectivity from microstructural information. *Netw. Neurosci.* 5, 477–504. doi: 10.1162/netn_a_00187
- Mito, R., Raffelt, D., Dhollander, T., Vaughan, D. N., Tournier, J.-D., Salvado, O., et al. (2018). Fibre-specific white matter reductions in Alzheimer's disease and mild cognitive impairment. *Brain* 141, 888–902. doi: 10.1093/brain/awx355
- Mohan, A., Roberto, A. J., Mohan, A., Lorenzo, A., Jones, K., Carney, M. J., et al. (2016). The significance of the default mode network (DMN) in neurological and neuropsychiatric disorders: A review. *Yale J. Biol. Med.* 89, 49–57.
- Mormino, E. C., Sperling, R. A., Holmes, A. J., Buckner, R. L., De Jager, P. L., Smoller, J. W., et al. (2016). Polygenic risk of Alzheimer disease is associated with early- and late-life processes. *Neurology* 87, 481–488. doi: 10.1212/WNL.0000000000002922
- Moskvina, V., Smith, M., Ivanov, D., Blackwood, D., StClair, D., Hultman, C., et al. (2010). Genetic differences between five European populations. *Hum. Hered.* 70, 141–149. doi: 10.1159/000313854
- Palesi, F., Castellazzi, G., Casiraghi, L., Sinforiani, E., Vitali, P., Wheeler-Kingshot, C. A. M., et al. (2016). Exploring patterns of alteration in Alzheimer's disease brain networks: A combined structural and functional connectome analysis. *Front. Neurosci.* 10:380. doi: 10.3389/fnins.2016.00380
- Parker, C. S., Deligianni, F., Cardoso, M. J., Daga, P., Modat, M., Dayan, M., et al. (2014). Consensus between pipelines in structural brain networks. *PLoS One* 9:e111262. doi: 10.1371/journal.pone.0111262
- Parker, G., Marshall, D., Rosin, P., Drage, N., Richmond, S., and Jones, D. K. (2013a). "RESDORE: Robust estimation in spherical deconvolution by outlier rejection," in *Proceedings of the 21st annual meeting of ISMRM*, Salt Lake City, UT.
- Parker, G., Marshall, D., Rosin, P. L., Drage, N., Richmond, S., and Jones, D. K. (2013b). "Fast and fully automated clustering of whole brain tractography results using shape-space analysis," in *Proceedings of the 21st annual meeting of ISMRM*, Salt Lake City, UT.
- Pasternak, O., Sochen, N., Gur, Y., Intrator, N., and Assaf, Y. (2009). Free water elimination and mapping from diffusion MRI. *Magn. Reson. Med.* 62, 717–730. doi: 10.1002/mrm.22055
- Patel, Y., Shin, J., Drakesmith, M., Evans, J., Pausova, Z., and Paus, T. (2020). Virtual histology of multi-modal magnetic resonance imaging of cerebral cortex in young men. *Neuroimage* 218:116968. doi: 10.1016/j.neuroimage.2020.116968
- Power, J. D., Cohen, A. L., Nelson, S. M., Wig, S. G., Anne, K., Church, J. A., et al. (2011). Functional network organisation of the human brain. *Neuron* 72, 665–678. doi: 10.1016/j.neuron.2011.09.006
- Prestia, A., Caroli, A., Herholz, K., Reiman, E., Chen, K., Jagut, W. J., et al. (2013). Diagnostic accuracy of markers for prodromal Alzheimer's disease in independent clinical series. *Alzheimers Dement.* 9, 677–686. doi: 10.1016/j.jalz.2012.09.016
- Prince, M., Bryce, R., Albanese, E., Wimo, A., Ribeiro, W., and Ferri, C. P. (2013). The global prevalence of dementia: A systematic review and meta-analysis. *Alzheimers Dement.* 9, 63–75. doi: 10.1016/j.jalz.2012.11.007
- Purcell, S. M., Wray, N. R., Stone, J. L., Visscher, P. M., O'Donovan, M. C., Sullivan, P. F., et al. (2009). Common polygenic variation contributes to risk of schizophrenia and bipolar disorder. *Nature* 460, 748–752. doi: 10.1038/nature08185
- Rempala, G. A., and Yang, Y. (2013). On permutation procedures for strong control in multiple testing with gene expression data. *Stat. Interface* 6, 79–89. doi: 10.4310/SII.2013.v6.n1.a8
- Roine, T., Jeurissen, B., Perrone, D., Aelterman, J., Phillips, W., Sijbers, J., et al. (2019). Reproducibility and intercorrelation of graph theoretical measures in structural brain connectivity networks. *Med. Image Anal.* 52, 56–67. doi: 10.1016/j.media.2018.10.009
- Rubinov, M., and Sporns, O. (2010). Complex network measures of brain connectivity: Uses and interpretations. *Neuroimage* 52, 1059–1069. doi: 10.1016/j.neuroimage.2009.10.003
- Sabuncu, M. R., Buckner, R. L., Smoller, J. W., Hyoun Lee, P., Fischl, B., and Sperling, R. A. (2012). The association between a polygenic Alzheimer's score and cortical thickness in clinically normal subjects. *Cereb. Cortex* 22, 2653–2661. doi: 10.1093/cercor/bhr348
- Saunders, A. M., Strittmatter, W. J., Schmechel, D., St. George-Hyslop, P. H., Pericak-Vance, M. A., Joo, S. H., et al. (1993). Association of apolipoprotein E allele epsilon4 with late-onset familial and sporadic Alzheimer's disease. *Neurology* 43:1467. doi: 10.1212/WNL.43.8.1467
- Sharp, T. H., McBride, N. S., Howell, A. E., Evans, C. J., Jones, D. K., Perry, G., et al. (2020). Population neuroimaging: Generation of a comprehensive data resource within the ALSPAC pregnancy and birth cohort. *Wellcome Open Res.* 5:203. doi: 10.12688/wellcomeopenres.16060.1
- Sims, R., Hill, M., and Williams, J. (2020). The multiplex model of the genetics of Alzheimer's disease. *Nat. Neurosci.* 23, 311–322. doi: 10.1038/s41593-020-0599-5
- Sleepers, K., Bettens, K., De Roeck, A., Van Cauwenberghe, C., Cuyvers, E., Verheijen, J., et al. (2015). A 22-single nucleotide polymorphism Alzheimer's disease risk score correlates with family history, onset age, and cerebrospinal fluid A β 42. *Alzheimers Dement.* 11, 1452–1460. doi: 10.1016/j.jalz.2015.02.013

- Strittmatter, W. J., Saunders, A. M., Schmechel, D., Pericak-Vance, M., Enghild, J., Salvesen, G. S., et al. (1993). Apolipoprotein E: High-avidity binding to beta-amyloid and increased frequency of type 4 allele in late-onset familial Alzheimer disease. *Proc. Natl. Acad. Sci. U.S.A.* 90, 1977–1981. doi: 10.1073/pnas.90.5.1977
- Tanzi, R. E. (2012). The genetics of Alzheimer's disease. *Cold Spring Harb. Perspect. Med.* 2:a006296. doi: 10.1101/cshperspect.a006296
- Tosto, G., Bird, T. D., Tsuang, D., Bennett, D. A., Boeve, B. F., Cruchaga, C., et al. (2017). Polygenic risk scores in familial Alzheimer disease. *Neurology* 88, 1180–1186. doi: 10.1212/WNL.0000000000003734
- Tzourio-Mazoyer, N., Landeau, B., Papathanassiou, D., Crivello, F., Etard, O., Delcroix, N., et al. (2002). Automated anatomical labeling of activations in SPM using a macroscopic anatomical parcellation of the MNI MRI single subject brain. *Neuroimage* 15, 273–289. doi: 10.1006/nimg.2001.0978
- van den Heuvel, M. P., and Sporns, O. (2011). Rich-club organization of the human connectome. *J. Neurosci.* 31, 15775–15786. doi: 10.1523/JNEUROSCI.3539-11.2011
- Wang, Z., Qiao, K., Chen, G., Sui, D., Dong, H.-M., Wang, Y.-S., et al. (2019). Functional connectivity changes across the spectrum of subjective cognitive decline, amnesic mild cognitive impairment and Alzheimer's disease. *Front. Neuroinform.* 13:26. doi: 10.3389/fninf.2019.00026
- Westfall, P. H., and Young, S. S. (1993). *Resampling-based multiple testing: Examples and methods for p-value adjustment*. New York, NY: John Wiley & Sons.
- Wolff, S. D., and Balaban, R. S. (1989). Magnetization transfer contrast (MTC) and tissue water proton relaxation in vivo. *Magn. Reson. Med.* 10, 135–144. doi: 10.1002/mrm.1910100113
- Wray, N. R., Lee, S. H., Mehta, D., Vinkhuyzen, A. A., Dudbridge, F., and Middeldorp, C. M. (2014). Research review: Polygenic methods and their application to psychiatric traits. *J. Child Psychol. Psychiatry* 55, 1068–1087. doi: 10.1111/jcpp.12295
- Xiao, Q., Liu, Z. J., Tao, S., Sun, Y.-M., Jiang, D., Li, H.-L., et al. (2015). Risk prediction for sporadic Alzheimer's disease using genetic risk score in the Han Chinese population. *Oncotarget* 6, 36955–36964. doi: 10.18632/oncotarget.6271
- Xue, C., Sun, H., Hu, G., Qi, W., Yue, Y., Rao, J., et al. (2020). Disrupted patterns of rich-club and diverse-club organizations in subjective cognitive decline and amnesic mild cognitive impairment. *Front. Neurosci.* 14:575652. doi: 10.3389/fnins.2020.575652
- Yokohama, J. S., Bonham, L. W., Sears, R. L., Klein, E., Karydas, A., Kramer, J. H., et al. (2015). Decision tree analysis of genetic risk for clinically heterogeneous Alzheimer's disease. *BMC Neurol.* 15:47. doi: 10.1186/s12883-015-0304-6
- Yu, J. T., Tan, L., and Hardy, J. (2014). Apolipoprotein E in Alzheimer's disease: An update. *Annu. Rev. Neurosci.* 37, 79–100. doi: 10.1146/annurev-neuro-071013-014300
- Yuan, J. P., Henje Blom, E., Flynn, T., Chen, Y., Ho, T. C., Connolly, C. G., et al. (2018). Test-retest reliability of graph theoretical metrics in adolescent brains. *Brain Connect.* 9, 144–154. doi: 10.1089/brain.2018.0580
- Zhang, H., Schneider, T., Wheeler-Kingshot, C. A., and Alexander, D. C. (2012). NODDI: Practical in vivo neurite orientation dispersion and density imaging of the human brain. *Neuroimage* 61, 1000–1016. doi: 10.1016/j.neuroimage.2012.03.072
- Zhang, S., Han, D., Tan, X., Feng, J., Guo, Y., and Ding, Y. (2012). Diagnostic accuracy of 18 F-FDG and 11 C-PIBPET for prediction of short-term conversion to Alzheimer's disease in subjects with mild cognitive impairment. *Int. J. Clin. Pract.* 66, 185–198. doi: 10.1111/j.1742-1241.2011.02845.x
- Zhang, Y., Schuff, N., Jahng, G.-H., Bayne, W., Mori, S., Schad, L., et al. (2007). Diffusion tensor imaging of cingulum fibers in mild cognitive impairment and Alzheimer disease. *Neurology* 68, 13–19. doi: 10.1212/01.wnl.0000250326.77323.01