



OPEN ACCESS

EDITED BY
Guo-Yuan Yang,
Shanghai Jiao Tong University, China

REVIEWED BY
Hung-Wen Chiu,
Taipei Medical University, Taiwan
Gelin Xu,
Shenzhen Second People's Hospital,
China

*CORRESPONDENCE
Zheng Ping
jojo_ras@126.com

†These authors have contributed
equally to this work and share senior
authorship

SPECIALTY SECTION
This article was submitted to
Translational Neuroscience,
a section of the journal
Frontiers in Neuroscience

RECEIVED 12 August 2022
ACCEPTED 20 September 2022
PUBLISHED 19 October 2022

CITATION
Ping Z, Min L, Qiuyun L, Xu C and
Qingke B (2022) Prognostic
nomogram for the outcomes in acute
stroke patients with intravenous
thrombolysis.
Front. Neurosci. 16:1017883.
doi: 10.3389/fnins.2022.1017883

COPYRIGHT
© 2022 Ping, Min, Qiuyun, Xu and
Qingke. This is an open-access article
distributed under the terms of the
[Creative Commons Attribution License
\(CC BY\)](https://creativecommons.org/licenses/by/4.0/). The use, distribution or
reproduction in other forums is
permitted, provided the original
author(s) and the copyright owner(s)
are credited and that the original
publication in this journal is cited, in
accordance with accepted academic
practice. No use, distribution or
reproduction is permitted which does
not comply with these terms.

Prognostic nomogram for the outcomes in acute stroke patients with intravenous thrombolysis

Zheng Ping ^{1*}, Li Min², Lu Qiuyun³, Chen Xu^{3†} and Bai Qingke^{2†}

¹Key Laboratory and Neurosurgery, Shanghai Pudong New Area People's Hospital, Shanghai, China,

²Department of Neurology, Shanghai Pudong New Area People's Hospital, Shanghai, China,

³Department of Neurology, Shanghai Eighth People's Hospital, Shanghai, China

Background and purpose: The prediction of neurological outcomes in ischemic stroke patients is very useful in treatment choices, as well as in post-stroke management. This study is to develop a convenient nomogram for the bedside evaluation of stroke patients with intravenous thrombolysis.

Materials and methods: We reviewed all enrolled stroke patients with intravenous thrombolysis retrospectively. Favorable outcome was defined as modified Rankin Score (mRs) less than 2 at 90 days post thrombolysis. We compared the clinical characteristics between patients with favorable outcome and poor outcome. Then, we applied logistic regression models and compared their predictability.

Results: A total of 918 patients were enrolled in this study, 448 patients from one hospital were included to develop a nomogram, whereas 470 patients from the other hospital were used for the external validation. Associated risk factors were identified by multivariate logistic regression. The nomogram was validated by the area under the receiver operating characteristic curve (AUC). A nomogram was developed with baseline NIHSS, blood sugar, blood cholesterol level, part-and full anterior circulation infarction (OCSP type). The AUC was 0.767 (95% CI 0.653–0.772) and 0.836 (95% CI 0.697–0.847) in the derivation and external validation cohorts, respectively. The calibration plot for the probability of severe neurological outcome showed an optimal agreement between the prediction by nomogram and actual observation in both derivation and validation cohorts.

Conclusion: A convenient outcome evaluation nomogram for patients with intravenous thrombolysis was developed, which could be used by physicians in making clinical decisions and predicting patients' prognosis.

KEYWORDS

cerebral infarction, logistic regression model, ischemic stroke, OCSP, intravenous thrombolysis

Introduction

The prediction of neurological outcomes in ischemic stroke patients is very useful in treatment choices, as well as in post-stroke management (Jiang et al., 2021; Kerleroux et al., 2021). However, an object prediction system to evaluate the benefits of intravenous thrombolysis treatment in acute ischemic stroke patients is missing.

A nomogram is a scoring system based on a series of variables (Zhang et al., 2022b). Nomograms are extensively used in clinical sessions to predict the probability of an event. As nomograms have been extensively applied in oncology events such as: metastasis, survival status prediction, recurrence and response to treatment (Zhang et al., 2022d); cardiovascular disease (Wu et al., 2022) and brain vascular disease (Tang et al., 2022). This leads us to the application of a nomogram in the stroke field.

In this study, we aimed to create a nomogram for the baseline evaluation of patients with initial data on presentation to the emergency department. The neurologist might be able to use this simple tool to classify patients with intravenous thrombolysis due to poor prognosis immediately at presentation.

Materials and methods

We enrolled 918 patients with ischemic stroke with thrombolytic therapy within 6 h of the stroke onset from July 2018 to June 2020 retrospective in two stroke centers in Shanghai, China. Neurological outcome was determined with modified Rankin Score (mRs) at about 90 days after the thrombolysis, and favorable outcome was defined as mRs score <2 (Wang et al., 2020). This study was approved by the Ethical Board of Shanghai Pudong New area People's Hospital.

Stroke patients aged 18–80 years whose computed tomography (CT) scans showed no acute hemorrhage were recruited at local hospital consecutively. Patients with missing clinical data were excluded, and 488 patients with intact medical records were included as in-house dataset. Specifically, for stroke patients with an onset within 4.5 h, rtPA treatment should be delivered directly, while for patients whose onset was more than 4.5 h, rtPA should not be administered until the advanced magnetic resonance imaging (MRI) analysis is completed. These MRI sequences can be completed within 5–8 min. When the results from DWI and Flair are mismatched, the intravenous thrombolysis could be applied in patients with stroke onset > 4.5h, which is consistent with ESO guideline 2021.

Patients from our hospital (the primary cohort) were used for nomogram derivation, and those from the other hospital formed the external validation cohorts. Among the

study population, 70% ($n = 341$) were randomly selected for the training set and the remaining 30% ($n = 147$) were assigned as the test set to prevent overfitting of the models. This was a retrospective observational cohort study; all data were analyzed anonymously and the informed consent of patients was waived. The baseline clinical data were collected when patients presented at the emergency Room before the thrombolysis.

Patients from other hospitals were used for external validation, including 316 stroke patients within 4.5 h of onset (control group) and 114 patients with wake-up stroke (WUS group).

Statistical methods

Statistical analyses were conducted based on logistic regression to identify risk factors. Variables with a p value < 0.05 in univariate logistic regression were considered to be linked to the study outcomes and were further used for backward step-down logistic regression. The nomogram's performance was measured by area under the receiver operating characteristic curve (AUC) and assessed by comparing nomogram-predicted versus observed incidences of the outcomes. External validation of the nomogram was conducted by calculating the total points of each patient in the validation cohort as per the established nomogram, followed by logistic regression in this cohort carried out by using the total points as a factor, and last, the AUC and calibration curve, bootstrap method and DCA were derived based on regression analysis. Two-tailed $p < 0.05$ was considered statistically significant. All the statistical analyses were conducted in R software V.4.1.2. R packages, namely "caret" for randomization of developing and validating groups (Kumar, 2018), "rms" for calibration plot, "pROC" to obtain the AUC (Sadatsafavi et al., 2022), "riskRegression" to perform Bootstrap method (Ozenne et al., 2017), and "rmda" to do the DCA (Brobbe et al., 2022), were used in the analysis.

Results

A total of 500 patients were enrolled to the study. After excluding 12 patients with missing related clinical data, and 488 patients who underwent thrombolytic therapy were finally included as the in-house dataset. The mean age of the 488 patients was 59.44 years and 74.18% were men. Comparison of demographic variables between the high and low mRs groups are shown in the [Table 1](#).

We found that in patients with higher mRs score at 90 days post onset, they have increased systolic pressure, blood glucose, TC, LDL and baseline NIHSS compared to those with lower mRs (BOLD with p value in [Table 1](#)), regardless of that patients

TABLE 1 Clinical data comparison in the in-house data.

Item	mRs_High	mRs_Low	Statistical value	P value
Gender (Male/Female)	275/87	99/27	NA	0.636
Age (years)	60.00 (52.00–67.00)	60.00 (53.25–67.00)	$t = 1.243$	0.447
First onset	13/361	2/112	NA	>0.9999
Previous hypertension	234/140	78/36	NA	0.304
SysP (kPa)	20.60 (18.67–22.50)	21.33 (19.50–22.67)	$t = 1.432$	0.034
DiaP (kPa)	12.00 (10.67–13.33)	12.00 (10.97–13.33)	$t = 1.241$	0.117
Previous DM	22/137	59/270	NA	0.8930
DM_value (mmol/L)	5.50 (4.60–6.10)	5.20 (4.93–7.07)	$t = 2.928$	0.002
Previous HTG	219/155	67/47	NA	1
TG (mmol/L)	1.54 (1.02–2.12)	1.40 (1.00–1.85)	$t = 1.036$	0.118
TC (mmol/L)	4.72 (4.06–5.29)	4.34 (3.67–4.99)	$t = 3.821$	0.001
LDL (mmol/L)	2.90 (2.22–3.48)	2.60 (1.66–3.30)	$t = 3.095$	0.007
Onset time (h)	1.96 (1.10–3.29)	2.00 (1.01–3.20)	$t = 0.068$	0.975
DNT (h)	1.41 (1.00–2.00)	1.33 (1.02–1.80)	$t = 0.522$	0.305
OTT (h)	3.50 (2.57–5.38)	3.58 (2.57–5.00)	$t = 0.317$	0.988
NIHSS_Baseline	9.00 (6.25–13.75)	6.00 (5.00–9.00)	$t = 6.233$	<0.001
NIHSS_Day 7	8.00 (6.00–10.00)	2.00 (1.00–3.00)	$t = 9.565$	<0.001

SysP, systolic pressure; DiaP, diastolic pressure; DM, diabetes; HTG, history of lipidemia; TG, triglyceride; TC, cholesterol; LDL, low-density lipoprotein; DNT, time from stroke to thrombolysis; OTT, Onset to therapy; NIHSS, National Institute of Health stroke scale. mRs ≥ 2 , mRs high (unfavorable outcome); mRs < 2 , mRs low (favorable outcome). The bold values indicate that there are statistical differences.

with previous diabetes or hyperlipidemia. There is no difference in onset time, DNT, OTT, age, gender and rate of first onset between the two groups.

which is the same case as the internal validation group ($p = 0.712$).

Independent prognostic factors in the primary cohort

Unfavorable outcomes (mRs > 1) were observed in 114 (23.4%) of the 488 patients in the in-house dataset. Univariate logistic regression found that factors such as DM_value (OR = 1.17, 95% CI 1.04–1.31), NIHSS_Base (OR = 1.16, 95% CI 1.1–1.22), OCSP1 (OR = 2.08, 95% CI 1.08–3.99), OCSP2 (OR = 0.26, 95% CI 0.11–0.63), OCSP4 (OR = 6.34, 95% CI 1.81–22.28) and TC (OR = 1.36, 95% CI 1.09–1.7) levels were significantly linked to the severity of stroke. Multivariate analyses established that DM_value (adjusted OR (AOR) = 1.16, 95% CI 1.02–1.32), NIHSS_Base (AOR = 1.13, 95% CI 1.06–1.2), OCSP1 (AOR = 4.16, 95% CI 1.69–10.28), OCSP4 (AOR = 6.34, 95% CI 1.81–22.28) and TC (AOR = 1.38, 95% CI 1.08–1.75) levels were independent risk factors for severe neurological outcome (Table 2).

The logistic model indicated good discriminative ability with an AUC value of 0.767 in the development model and 0.646 in the internal validation model (95% CI 0.624–0.657) (Figure 1). The factor OCSP2 was not included in the final model (devmodel 4), as its p value ($p = 0.1298$) by Delong's test was insignificant,

Validation of predictive accuracy of the logistic model for outcome severity

The calibration plot for the probability of poor neurological outcome indicated an optimal agreement between the predictions through the 6-factor logistic model (added with OCSP2, Figure 2A) and 5-factor logistic model (Figure 2B).

The calibration curve also indicated a good agreement between 5-factor logistic model (Figure 2C) and 4-factor logistic model (Figure 2D) in the internal validation model with a similar ROC value.

A correlation matrix was verified by the Bootstrap method. The formula was formed with 5 factors first and calibration score was calculated and the calibration figure was plotted in Figures 3A,B for the developed and internal validated data, which showed that the AUC value is 76.4 (95%CI: 70.3–82.5) and 64.9 (95%CI: 53.7–76.0), respectively. The Brier score was 14.6 and 17.6, while both were less than 25. We further used DCA method to verify the models. We found both models in the training data (Figure 3C) and both models in the internal validated data (Figure 3D) have good net benefits. When we added the OCSP2 in the internal dataset for the DCA analysis, it demonstrated a poor net benefit compared to the logistic models.

TABLE 2 Logistic regression in the primary cohort for stroke patients.

Parameter	Univariate logistic			Multivariate logistic		
	OR.x	CI.x	P.x	OR.y	CI.y	P.y
Age	1.02	0.99–1.04	0.232			
DiaP	1.08	0.93–1.25	0.335			
DM	0.75	0.36–1.57	0.442			
DM_value	1.17	1.04–1.31	0.007	1.16	1.02–1.32	0.02
DNT	1.1	0.84–1.44	0.468			
First onset	1.35	0.29–6.39	0.702			
Gender	0.92	0.51–1.65	0.773			
HBP	1.63	0.95–2.79	0.077			
HTG	0.89	0.53–1.48	0.649			
LDL	1.16	0.96–1.41	0.129			
NIHSS_Base	1.16	1.1–1.22	0	1.13	1.06–1.2	0
OCSP1	2.08	1.08–3.99	0.028	4.16	1.69–10.28	0.002
OCSP2	0.26	0.11–0.63	0.003			
OCSP3	0	0–Inf	0.984			
OCSP4	6.34	1.81–22.28	0.004	11.28	2.17–58.51	0.004
Onset_Time	1.02	0.89–1.15	0.816			
OTT	1.01	0.92–1.1	0.888			
SysP	1.09	1–1.2	0.057			
TC	1.36	1.09–1.7	0.006	1.38	1.08–1.75	0.009
TG	0.85	0.65–1.11	0.238			
TOAST1	1.35	0.26–7.1	0.723			
TOAST2	0.65	0.22–1.97	0.45			
TOAST3	1.01	0.44–2.32	0.987			
TOAST4	3.42	0.47–24.63	0.223			

HBP, History of Hypertension; OCSP1, Part anterior circulation infarction; OCSP2, Post circulation infarction; OCSP3, Lacunar infarction; OCSP4, Full anterior circulation infarction; TOAST1, Cardio embolism; TOAST2, Small-artery occlusion Lacunar; TOAST3, Large-artery atherosclerosis; TOAST4, acute stroke of other determined etiology or stroke of other undetermined etiology. The bold values indicate that there are statistical differences.

Risk prediction nomogram for outcome severity

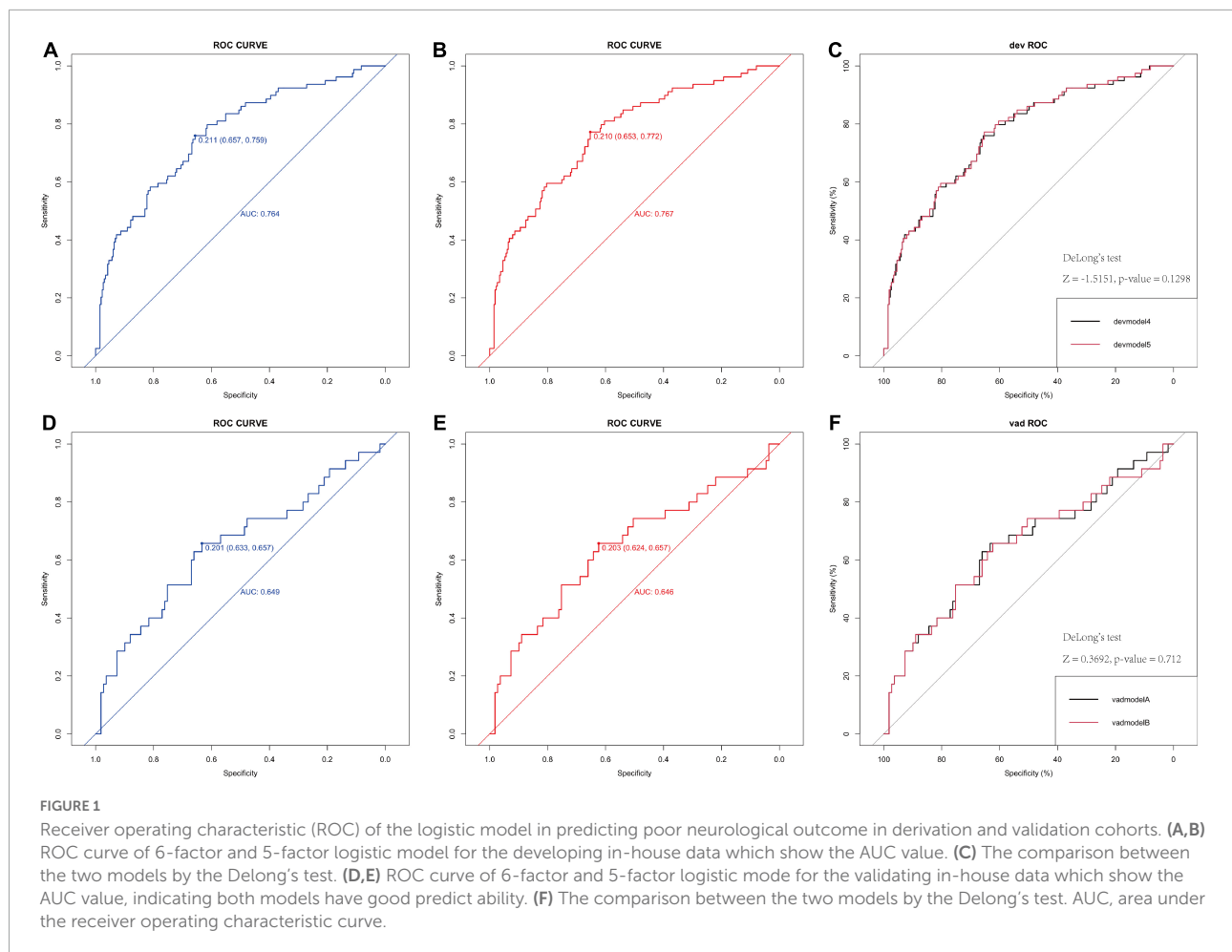
The nomogram for outcome prediction of stroke patients was developed in accordance with the multivariate regression model (5 factors), suggesting that these five parameters are all independent risk factors for the neurological outcome with all ORs > 1 indicating that all of these factors are risk factors (Figures 3E,F). For example, if a patient presented with part-anterior circulation infarction (OCSP1 = 42 points), initial NIHSS = 17 (60 points), blood glucose = 16 (61 points), TC level is 7 (66 points). The total is 229 points, which indicated that the probability of this patient to develop a poor neurological outcome is a bit higher than 90% (Figure 3E).

External validation

To validate the prevalence and efficiency of this logistical model in stroke after intravenous thrombolysis, we verified

this in other two external datasets including 316 stroke patients within 4.5 h of onset (control group) and 114 patients with wake-up stroke (WUS group). Unfavorable outcomes (mRs > 1) were observed in 85 (26.9%) of the 316 and 38 (33.3%) of the 114 patients in the two out-house dataset. Both groups of patients were treated with intravenous rt-PA. There was no significant difference in NIHSS scores and 90-day mRs between the two groups (Table 3), which indicated that these two datasets could be used for external validation independently. The clinical characteristics of patients from different datasets were compared in Table 3. We further explored the confusion matrix for the training set and validation set, respectively and summarized in Tables 4, 5. The mis-class error for both is 19.19 and 22.92%.

For the logistic regression model, the predictive power of the was 0.836 (95%CI: 0.697–0.847) and 0.840 (95%CI:0.711–0.895), respectively (Figures 4A,B). No significant difference in AUC values between External 1 and External 2 cohorts ($p = 0.497$) was found by the delong's test (Figure 4C). Again, the models were further



validated with calibration showing the S.p was 0.794 and 0.826 (Figures 5A,B).

Again, the Bootstrap method was applied to assess the correlation matrix and it was found that the AUC value is 83.6 (95%CI: 78.8–88.3) and 84.0 (95%CI: 75.8–92.3), respectively. The Brier score was 14.3 and 15.0, while both were less than 25 (Figures 6A,B).

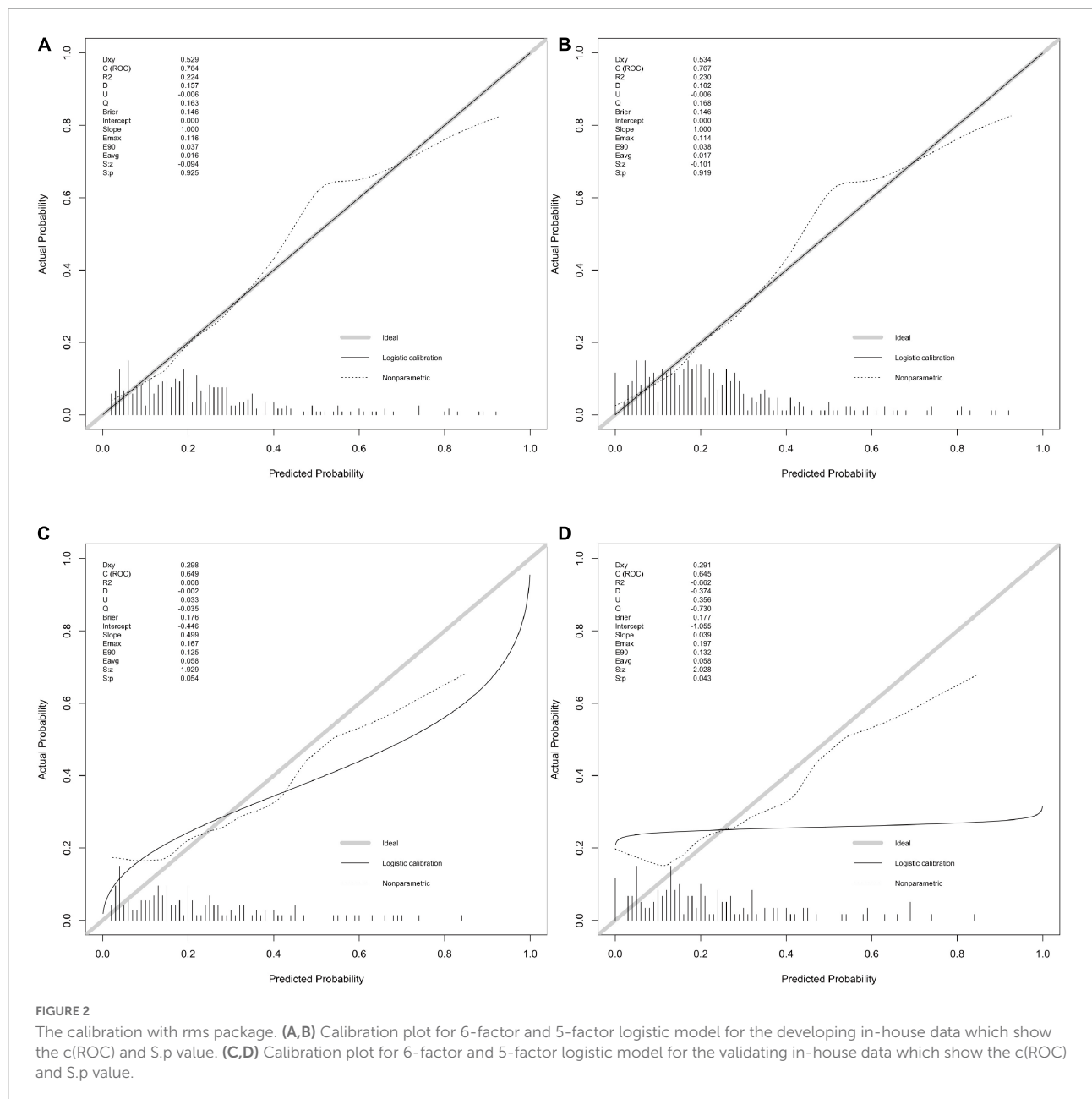
We further verified the external datasets with DCA method as well. We found both models in External 1 (Figure 7A) and External 2 (Figure 7B) have good net benefits. In addition, the confusion matrix for the External 1 and 2 set was summarized in Tables 6, 7. The mis-class error for both is 20.89% and 19.30%.

Discussion

Our study demonstrated that the use of logistic models can accurately predict neurological outcomes in acute stroke patients with intravenous thrombolysis. First, we show that stroke patients with higher NIHSS score on day7 have increased

systolic pressure, blood glucose, TG, TC, LDL levels and baseline NIHSS compared to those with lower NIHSS score, while no difference of distribution in patients with previous diabetes or hyperlipidemia. This suggests that it is critical to control the blood pressure in acute stroke patients (Zhang et al., 2019, 2022c; Chen et al., 2021; Mazighi et al., 2021), especially decreasing blood glucose and lipid level including TG, TC and LDL, regardless of patients with previous history or not.

As the 7-day NIHSS is an early assessment score in stroke patients and it might be not available for some patients (Mistry et al., 2021). Therefore, we did not include it in the logistic model, instead of the baseline NIHSS. According to the clinical features and laboratory findings, we established and validated prognostic nomogram for neurological outcome of stroke patients. The proposed nomogram revealed excellent discrimination in both the training and testing cohorts. In addition, accurate predictions for outcome severity using the developed nomograms were indicated by calibration curves, bootstrap and DCA methods.



In this study, multivariate logistic regression was used for predicting a binary neurological outcome based on the mRs at 3 months post stroke. This nomogram was developed based on five predictors, comprising baseline NIHSS, blood sugar level, blood cholesterol and OCSF types: part and full anterior circulation infarction. These variables were established to be linked with a poor prognosis of stroke patients with intravenous thrombolysis in certain earlier studies. Multivariate analysis showed that the OCSF with part or full anterior circulation infarction is also a risk factor with a higher OR value, indicated that patients

with the anterior circulation infarction are more likely to develop poor neurological outcome after the thrombolysis. Meanwhile, we found both TC and blood sugar levels had a statistically significant association with neurological outcome, regardless of patients with previous history of DM or hypertension. Metabolic syndrome is a risk factor for the poor outcome in stroke (Xu et al., 2022). After reducing the risk factors, most stroke patients might have a better prognosis after thrombolysis, while some of them might be not. Only targeting blood lipids or blood sugar may overestimate the risk of stroke, and the combination of

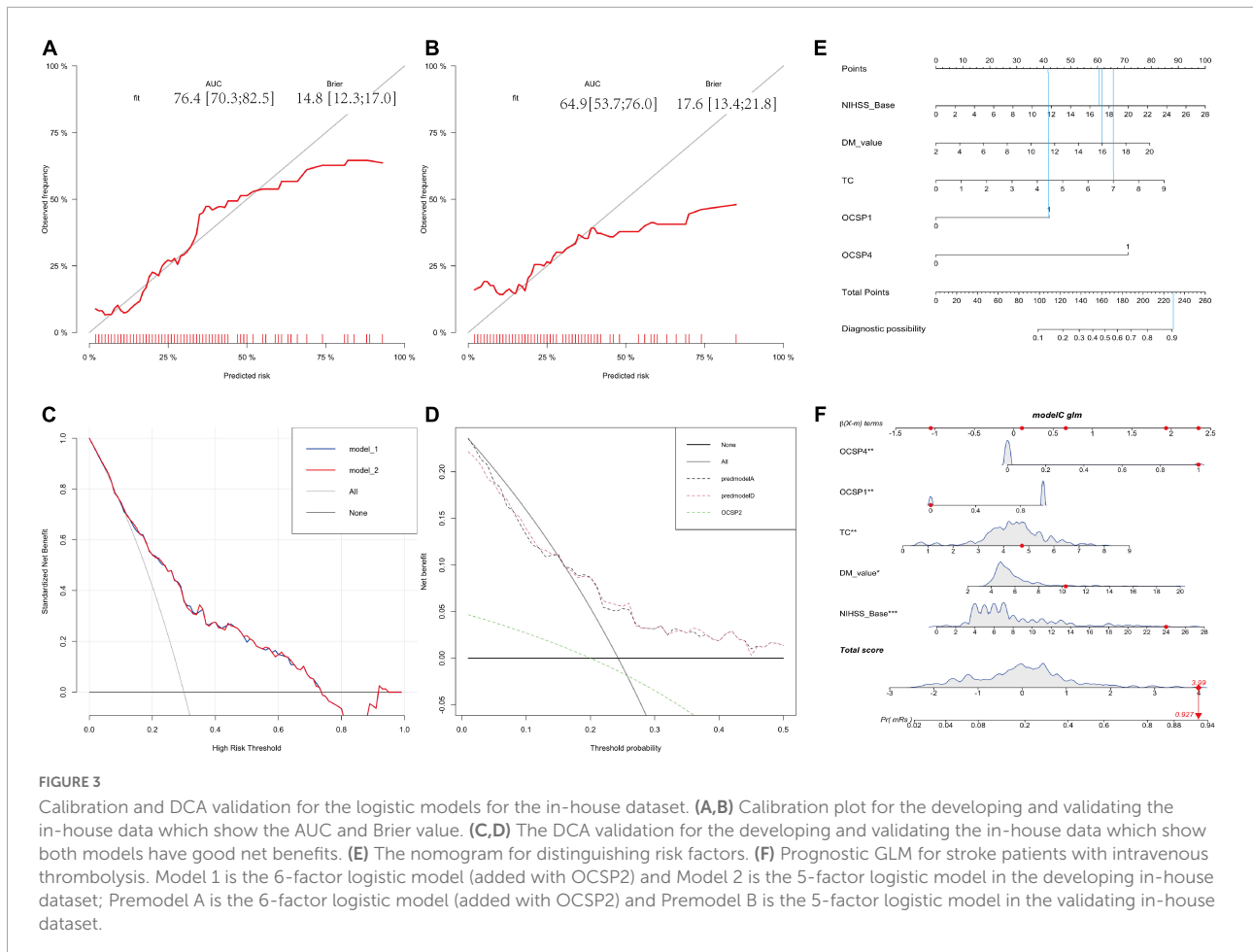


FIGURE 3

Calibration and DCA validation for the logistic models for the in-house dataset. (A,B) Calibration plot for the developing and validating the in-house data which show the AUC and Brier value. (C,D) The DCA validation for distinguishing risk factors and validating the in-house data which show both models have good net benefits. (E) The nomogram for distinguishing risk factors. (F) Prognostic GLM for stroke patients with intravenous thrombolysis. Model 1 is the 6-factor logistic model (added with OCSF2) and Model 2 is the 5-factor logistic model in the developing in-house dataset; Premodel A is the 6-factor logistic model (added with OCSF2) and Premodel B is the 5-factor logistic model in the validating in-house dataset.

these five indicators in our nomogram may overcome this disadvantage. These variables were objective, easy to acquire and quickly assessable. By combining these non-specific variables, good discrimination in both cohorts was obtained with this nomogram.

We calculated predicted risk and relative scores in the nomogram. As per the nomogram, patients with a >2 points (Figure 3E) score would have a > 60% chance of developing severe prognosis of stroke, a patient with a score of > 4 would develop a severe case with a probability of 90%. A nomogram is beneficial to emergency neurologist for evaluating patients immediately, especially in rural areas, where the MRI is not available. This predictive nomogram may be used in optimally estimating individualized disease-related risks that simplify patient management-related decision-making.

Importantly, we verified this model with both internal validated dataset and external datasets from other hospitals. The calibration, bootstrap and DCA results were quite consistent in both internal and external validated datasets with the ROC value between 0.65 and 0.75 and the Brier score is both less than 25. For the DCA validation results, the

models with five factors obtained relatively good net benefits in all datasets.

Therefore, our study established a nomogram to be used as a support tool for predicting stroke cases with thrombolysis. Chen group also used nomogram to assess the outcome of patients with ischemic stroke after intravenous thrombolysis and found the accuracy of the nomogram is 0.641 and 0.627 in the training cohort and validation cohort (Hu et al., 2022). They suggested that the accuracy of the nomogram needs to be improved. A recent study led by Wang yongjun group identified serum glucose level is an independent risk factor in the poor 3-month functional recovery in stroke patients with the univariate and multivariate logistic regression study (Che et al., 2022). Mehta et al. also used the logistic regression study to find DM, dyslipidemia, baseline NIHSS, random blood sugar, dense cerebral artery sign, age and glucose level on admission were predicting factors in poor outcome (Mehta et al., 2017). One group found the nomogram including initial NIHSS, delta NIHSS, hypertension, Hhcy, HDL-C/LDL-C hold a very high AUC-ROC value of the training cohort with 0.872 and 0.900 in the test cohort, which is higher than the predictive ability

TABLE 3 Clinical characteristics of patients with different datasets.

Parameters	Level	In-house	External I	External II	P value [#]
<i>n</i>	NA	488	316	114	NA
Age	NA	60.00 (52.00–67.00)	60.0(53.0–68.0)	62.0(53.2–67.0)	0.3428
Gender	Male	362 (74.18%)	205 (64.9%)	75 (65.8%)	0.1113
	Female	126 (25.82%)	111 (35.1%)	39 (34.2%)	
HBP	With	312 (63.93)	206 (65.2%)	77 (67.5%)	0.7567
	Without	176 (36.07%)	110 (34.8%)	37 (32.5%)	
SynP	NA	20.8 (18.67–22.53)	20.7 (18.7–22.7)	21.5 (20.0–22.7)	0.2628
DiaP	NA	12.00 (10.67–13.33)	12.0 (10.7–13.3)	12.0 (11.3–13.3)	0.3683
DM	With	81 (16.6%)	60 (19.0%)	16 (14.0%)	0.4413
	Without	407 (83.40%)	256 (81.0%)	98 (86.0%)	
DM_value	NA	5.30 (4.70–6.30)	5.3 (4.7–6.3)	5.4 (4.9–6.4)	0.6682
HTG	With	286 (58.61%)	172(54.4%)	80 (70.2%)	0.1380
	Without	202 (41.39%)	144 (45.6%)	34 (29.8%)	
TG	NA	1.50 (1.02–2.10)	1.4 (1.0–2.1)	1.6 (1.2–2.2)	0.2650
TC	NA	4.43 (3.78–5.08)	4.5 (3.9–5.1)	4.6 (3.9–5.1)	0.3204
LDL	NA	2.70 (1.73–3.30)	3.0 (2.4–3.5)	3.1 (2.4–3.5)	<0.0001*
TOAST	1	430 (88.11%)	161 (50.9%)	55 (48.2%)	<0.0001*
	2	40 (8.20%)	113 (35.8%)	38 (33.3%)	
	3	14 (2.87%)	33 (10.4%)	19 (16.7%)	
	4	4 (0.82%)	9 (2.8%)	2 (1.8%)	
OCSP	1	353 (72.34%)	187 (59.2%)	68 (59.6%)	0.0002*
	2	135 (27.68%)	129 (40.8%)	46 (40.4%)	
NIHSS_Baseline	NA	7.00 (5.00–10.00)	7.0 (6.0–10.0)	8.0 (6.0–10.8)	0.3910
NIHSS_Day7	NA	2.00 (1.00–5.00)	2.0 (1.0–4.0)	2.0 (1.0–5.0)	0.3753

*No difference between the External I and External II; [#]Comparison among the three groups.

of our model. In their study, the authors included several novel blood markers such as: Hhcy, HDL-C/LDL-C, which indicates that these lipid markers might be very important in the pathology of stroke (Lv et al., 2020). Similar results were obtained from Huan Tang et al., and the 3-month poor outcome is related to the baseline elevated SBP, baseline NIHSS,

prior hyperlipemia, cardioembolic stroke (Tang et al., 2021). Few studies correlated the neurological outcome with logistic regression model rather than the nomogram (Çetiner et al., 2018; Tork et al., 2020; Cui et al., 2022), and most of them were focusing on the complications in stroke patients after thrombolysis. Manuel et al. reported that SICH nomogram is able to predict the symptomatic intracerebral hemorrhage after intravenous thrombolysis for stroke with a ROC at 0.739 (Cappellari et al., 2018). Weng et al. also reported that AUC-ROC values of the nomogram regarding the risk of intracranial hemorrhage is 0.887 and 0.776 in the training and testing sets (Weng et al., 2022). Zhou et al. obtained the similar results with AUC-ROC values of the nomogram are 0.828 and 0.801, respectively (Zhou et al., 2020). Two other studies applied the nomogram to investigate the risk of hemorrhagic transformation for acute ischemic stroke with AUC value at 0.889 (Zhang et al., 2022a) and 0.9562 (Wu et al., 2020). These findings investigated the clinical characteristics of stroke patients have a predictable ability in hemorrhagic complications, while they did not further investigate the neurological outcome at the chronic stage such as 3 months post onset. Nonetheless, certain limitations of this

TABLE 4 Confusion matrix for the in-house training dataset.

Confusion matrix	True prediction	False prediction
True value	258	59
False value	7	20

The mis-class error is 0.1919. *n* = 344 in the in-house training dataset.

TABLE 5 Confusion matrix for the in-house validation dataset.

Confusion matrix	True prediction	False prediction
True value	104	28
False value	5	7

The mis-class error is 0.2292. *n* = 144 in the in-house validation dataset.

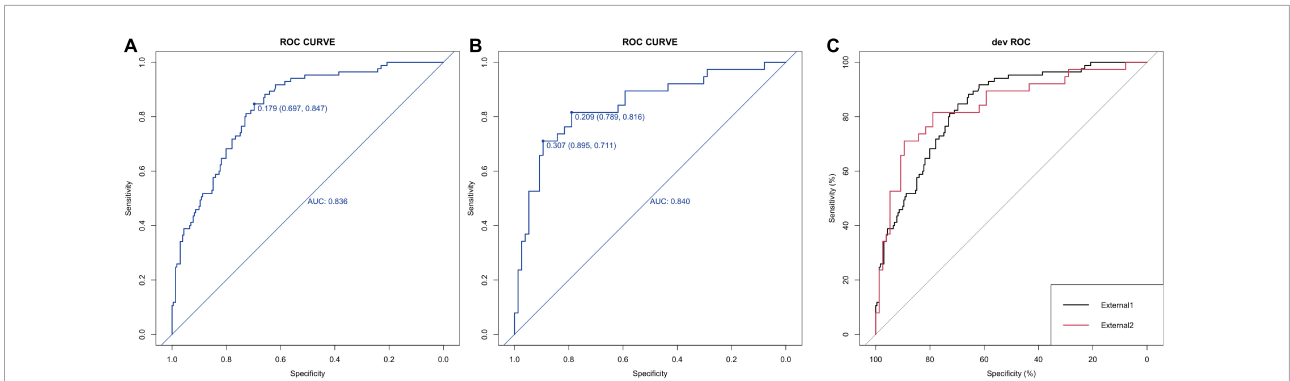


FIGURE 4 Calibration and DCA validation for the logistic models for the external datasets. **(A,B)** ROC curve of the 5-factor logistic model for two external datasets which show the AUC value. **(C)** The comparison between the ROC curve by the Delong's test.

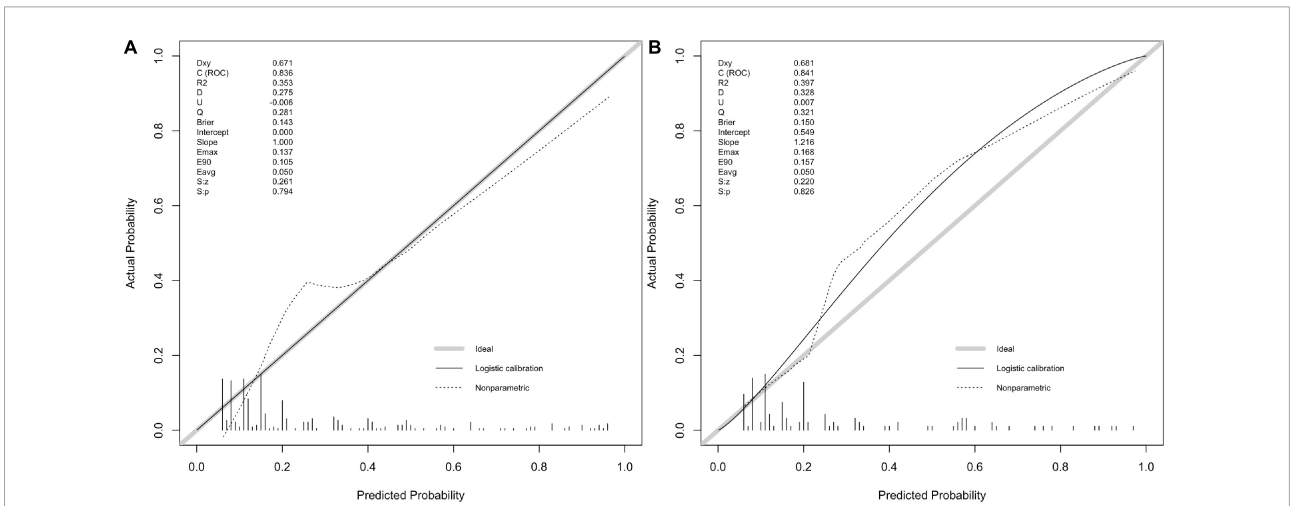


FIGURE 5 Calibration plot for the 5-factor logistic model for two external datasets which show the c(ROC) and S.p value.

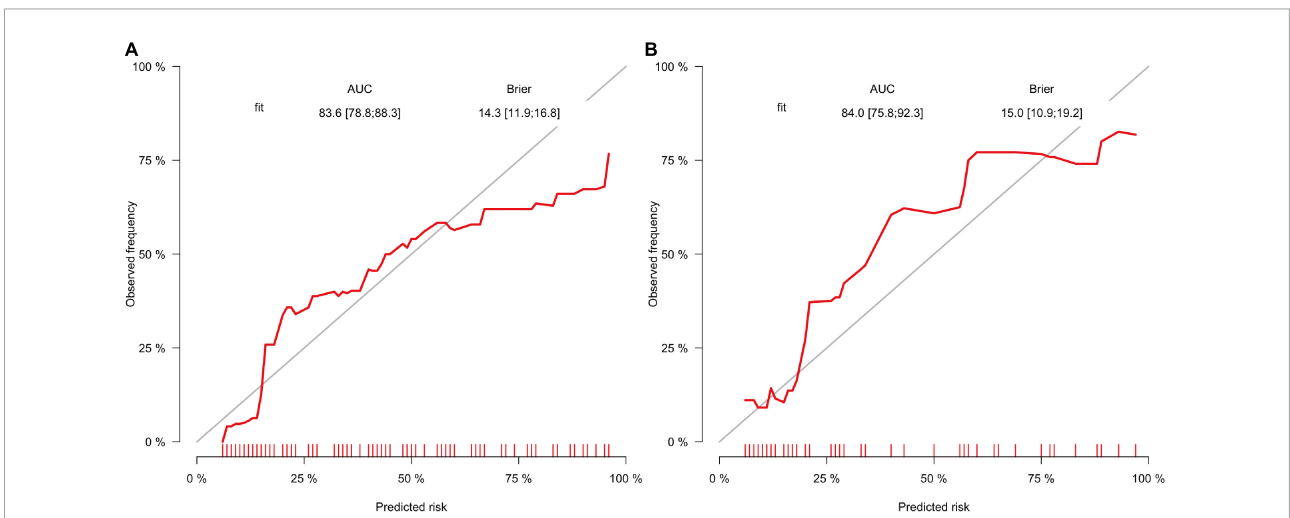


FIGURE 6 Calibration plot for two external datasets which show the AUC and Brier value.

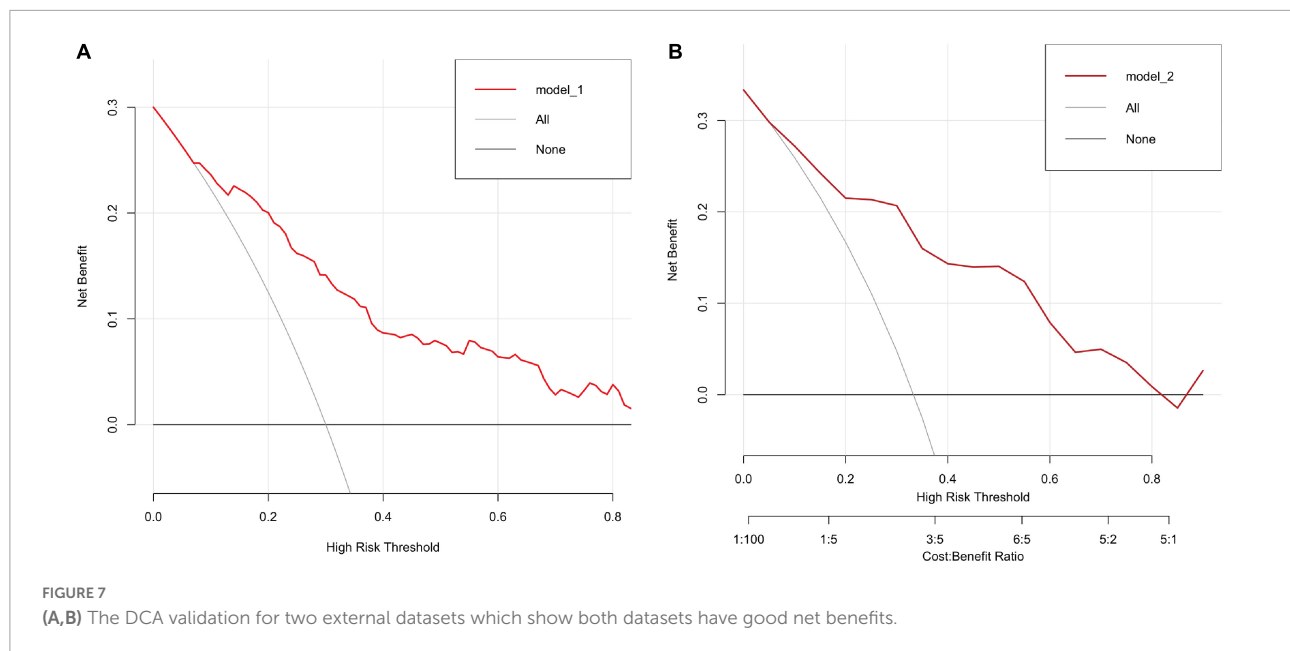


TABLE 6 Confusion matrix for the External I dataset.

Confusion matrix	True prediction	False prediction
True value	217	52
False value	14	33

The mis-class error is 0.2089. $n = 316$ in the External I dataset.

TABLE 7 Confusion matrix for the External II dataset.

Confusion matrix	True prediction	False prediction
True value	72	18
False value	4	20

The mis-class error is 0.1930. $n = 114$ in the External II dataset.

study need mentioning. First, due to this study's retrospective design, some valuable variables such as symptoms and certain imaging scores (CT features and MRI parameters) were inaccessible. Variables used as inputs to the logistic algorithms were those that are traditionally attainable or evaluated in most cases. However, the prediction might be influenced slightly according to the variables and may be adjusted with consideration for their availability when incorporating data from MRI imaging. Patients with intact imaging information are required to be included to perform the radiomics (Miao et al., 2022). Thus, the discrimination of this nomogram and other risk scoring systems was not compared. Second, this study enrolled only two independent hospitals. Both hospitals were located in Shanghai; thus, other validation cohorts from other cities, even other countries would encourage widespread application of this nomogram.

Conclusion

A five-variable risk prediction nomogram was developed based on demographic and routine laboratory tests, which accurately predicts the probability of neurological outcome. This nomogram can be used to help risk stratify stroke patients with thrombolysis on presentation to the emergency department and provide useful strategy in improving the outcome.

Data availability statement

The original contributions presented in this study are included in the article/[Supplementary material](#), further inquiries can be directed to the corresponding author.

Ethics statement

The studies involving human participants were reviewed and approved by the Ethical Board of Shanghai Pudong New Area People's Hospital. Written informed consent for participation was not required for this study in accordance with the national legislation and the institutional requirements.

Author contributions

ZP and BQ designed the clinical data and did the bioinformatical analysis with LM. LQ collected the clinical

data. ZP and CX wrote the draft. All authors approved the submitted version.

Funding

This study was supported by Clinical Discipline Project of Shanghai Pudong (PWYst2018-01) and Key Discipline Group Construction Project of Shanghai Pudong (PWZxq2017-02).

Conflict of interest

The authors declare that the research was conducted in the absence of any commercial or financial relationships that could be construed as a potential conflict of interest.

References

- Brobbey, A., Wiebe, S., Nettel-Aguirre, A., Josephson, C. B., Williamson, T., Lix, L. M., et al. (2022). Repeated measures discriminant analysis using multivariate generalized estimation equations. *Stat. Methods Med. Res.* 31, 646–657. doi: 10.1177/09622802211032705
- Capellari, M., Turcato, G., Forlivesi, S., Zivelonghi, C., Bovi, P., Bonetti, B., et al. (2018). STARTING-SICH nomogram to predict symptomatic intracerebral hemorrhage after intravenous thrombolysis for stroke. *Stroke* 49, 397–404. doi: 10.1161/strokeaha.117.018427
- Çetiner, M., Aydin, H. E., Güler, M., Kabay, S. C., and Zorlu, Y. (2018). Predictive factors for functional outcomes after intravenous thrombolytic therapy in acute ischemic stroke. *Clin. Appl. Thromb. Hemost.* 24, 171S–177S. doi: 10.1177/1076029618796317
- Chen, F., Wang, A., Ju, Y., Ding, Y., Duan, H., Geng, X., et al. (2022). Early neurological deterioration in acute ischemic stroke patients after intravenous thrombolysis with alteplase predicts poor 3-month functional prognosis – data from the thrombolysis implementation and monitor of acute ischemic stroke in China (TIMS-China). *BMC Neurol.* 22:212. doi: 10.1186/s12883-022-02737-8
- Chen, M., Kronsteiner, D., Möhlenbruch, M. A., Kieser, M., Bendszus, M., Wick, W., et al. (2021). Individualized blood pressure management during endovascular treatment of acute ischemic stroke under procedural sedation (INDIVIDUATE) – An explorative randomized controlled trial. *Eur. Stroke J.* 6, 276–282. doi: 10.1177/23969873211000879
- Cui, Y., Meng, W.-H., and Chen, H.-S. (2022). Early neurological deterioration after intravenous thrombolysis of anterior vs posterior circulation stroke: A secondary analysis of INTRACIS. *Sci Rep.* 12:3163. doi: 10.1038/s41598-022-07095-6
- Hu, J., Fang, Z., Lu, X., Wang, F., Zhang, N., Pan, W., et al. (2022). Influence factors and predictive models for the outcome of patients with ischemic stroke after intravenous thrombolysis: A multicenter retrospective cohort study. *Oxid Med. Cell Longev.* 2022:3363735. doi: 10.1155/2022/3363735
- Jiang, B., Zhu, G., Xie, Y., Heit, J. J., Chen, H., Li, Y., et al. (2021). Prediction of clinical outcome in patients with large-vessel acute ischemic stroke: Performance of machine learning versus SPAN-100. *Am. J. Neuroradiol.* 42, 240–246. doi: 10.3174/ajnr.a6918
- Kerleroux, B., Tomasino, C., Soriano, D., Rodrigues, P. G., Moura, F. S., Cottier, J. P., et al. (2021). EASY score (Eloquent, Age and baseline SYmptoms score) for outcome prediction in patients with acute ischemic stroke. *Clin. Neurol. Neurosurg.* 205:106626. doi: 10.1016/j.clineuro.2021.106626
- Kumar, A. (2018). Pre-processing and modelling using caret package in R. *Int. J. Comput. Appl.* 181, 39–42. doi: 10.5120/ijca2018917530
- Lv, S., Song, Y., Zhang, F.-L., Yan, X.-L., Chen, J., Gao, L., et al. (2020). Early prediction of the 3-month outcome for individual acute ischemic stroke patients

Publisher's note

All claims expressed in this article are solely those of the authors and do not necessarily represent those of their affiliated organizations, or those of the publisher, the editors and the reviewers. Any product that may be evaluated in this article, or claim that may be made by its manufacturer, is not guaranteed or endorsed by the publisher.

Supplementary material

The Supplementary Material for this article can be found online at: <https://www.frontiersin.org/articles/10.3389/fnins.2022.1017883/full#supplementary-material>

- who received intravenous thrombolysis using the N2H3 nomogram model. *Ther. Adv. Neurol. Disord.* 13:1756286420953054. doi: 10.1177/1756286420953054
- Mazighi, M., Richard, S., Lapergue, B., Sibon, L., Gory, B., Berge, J., et al. (2021). Safety and efficacy of intensive blood pressure lowering after successful endovascular therapy in acute ischaemic stroke (BP-TARGET): A multicentre, open-label, randomised controlled trial. *Lancet Neurol.* 20, 265–274. doi: 10.1016/S1474-4422(20)30483-x
- Mehta, A., Mahale, R., Buddaraju, K., Majeed, A., Sharma, S., Javali, M., et al. (2017). Intravenous thrombolysis for acute ischemic stroke: Review of 97 patients. *J. Neurosci. Rural Pract.* 8, 38–43. doi: 10.4103/0976-3147.193558
- Miao, G., Rao, B., Wang, S., Fang, P., Chen, Z., Chen, L., et al. (2022). Decreased functional connectivities of low-degree level rich club organization and caudate in post-stroke cognitive impairment based on resting-state fMRI and radiomics features. *Front. Neurosci.* 15:796530. doi: 10.3389/fnins.2021.796530
- Mistry, E. A., Yeatts, S., de Havenon, A., Mehta, T., Arora, N., Rosa, F. D. L. R. L., et al. (2021). Predicting 90-day outcome after thrombectomy: Baseline-adjusted 24-hour NIHSS is more powerful than NIHSS score change. *Stroke* 52, 2547–2553. doi: 10.1161/strokeaha.120.032487
- Ozenne, B., Sorensen, A. L., Scheike, T., Torp-Pedersen, C., and Gerds, TA. (2017). riskRegression: Predicting the risk of an event using cox regression models. *R J.* 9:440. doi: 10.32614/rj-2017-062
- Sadatsafavi, M., Saha-Chaudhuri, P., and Petkau, J. (2022). Model-based ROC curve: Examining the effect of case mix and model calibration on the ROC plot. *Med. Decis. Making* 42, 487–499. doi: 10.1177/0272989x211050909
- Tang, H., Yan, S., Wu, C., and Zhang, Y. (2021). Characteristics and outcomes of intravenous thrombolysis in mild ischemic stroke patients. *Front. Neurol.* 12:744909. doi: 10.3389/fneur.2021.744909
- Tang, M., Gao, J., Ma, N., Yan, X., Zhang, X., Hu, J., et al. (2022). Radiomics nomogram for predicting stroke recurrence in symptomatic intracranial atherosclerotic stenosis. *Front. Neurosci.* 16:851353. doi: 10.3389/fnins.2022.851353
- Tork, M. A., Aref, H. M., El-Khawass, H. M., Khalil, M. F., and ElSadek, A. (2020). Outcome predictors of intravenous thrombolytic therapy in acute ischemic stroke patients: An Egyptian center experiences. *Egypt. J. Neurol. Psychiatry Neurosurg.* 56:103. doi: 10.1186/s41983-020-00229-5
- Wang, X., Moullaali, T. J., Li, Q., Berge, E., Robinson, T. G., Lindley, R., et al. (2020). Utility-weighted modified rankin scale scores for the assessment of stroke outcome. *Stroke* 51, 2411–2417. doi: 10.1161/strokeaha.119.028523
- Weng, Z.-A., Huang, X.-X., Deng, D., Yang, Z.-G., Li, S.-Y., Zang, J.-K., et al. (2022). A new nomogram for predicting the risk of intracranial hemorrhage in acute ischemic stroke patients after intravenous thrombolysis. *Front. Neurol.* 13:774654. doi: 10.3389/fneur.2022.774654

Wu, Y., Chen, H., Liu, X., Cai, X., Kong, Y., Wang, H., et al. (2020). A new nomogram for individualized prediction of the probability of hemorrhagic transformation after intravenous thrombolysis for ischemic stroke patients. *BMC Neurol.* 20:426. doi: 10.1186/s12883-020-02002-w

Wu, Z., Shi, M., Wang, L., and Yao, Y. (2022). Identification of major risk factors and non-linear effects to the development of left ventricular hypertrophy in chronic kidney disease by constructing and validation of nomograms. *Front. Med.* 9:914800. doi: 10.3389/fmed.2022.914800

Xu, R., Hu, X., Wang, T., Yang, Y., Jiang, N., Luo, J., et al. (2022). Visceral adiposity and risk of stroke: A mendelian randomization study. *Front. Neurol.* 13:804851. doi: 10.3389/fneur.2022.804851

Zhang, S., Ji, B., Zhong, X., Zhong, L., Yang, L., and Yang, C. (2022b). A dynamic nomogram predicting portal vein thrombosis in cirrhotic patients during primary prophylaxis for variceal hemorrhage. *Front. Med.* 9:887995. doi: 10.3389/fmed.2022.887995

Zhang, Z., Wang, F., Zhang, J., Zhan, W., Zhang, G., Li, C., et al. (2022d). An m6A-related lncRNA signature predicts the prognosis of

hepatocellular carcinoma. *Front. Pharmacol.* 13:854851. doi: 10.3389/fphar.2022.854851

Zhang, X., Cui, T., Zhu, Q., Wang, C., Wang, A., Yang, Y., et al. (2022c). Association of blood pressure within 6 h after endovascular thrombectomy and functional outcomes in ischemic stroke patients with successful recanalization. *Front. Neurol.* 13:860124. doi: 10.3389/fneur.2022.860124

Zhang, K., Luan, J., Li, C., and Chen, M. (2022a). Nomogram to predict hemorrhagic transformation for acute ischemic stroke in Western China: A retrospective analysis. *BMC Neurol.* 22:156. doi: 10.1186/s12883-022-02678-2

Zhang, T., Wang, X., Wen, C., Zhou, F., Gao, S., Zhang, X., et al. (2019). Effect of short-term blood pressure variability on functional outcome after intra-arterial treatment in acute stroke patients with large-vessel occlusion. *BMC Neurol.* 19:228. doi: 10.1186/s12883-019-1457-5

Zhou, Z., Yin, X., Niu, Q., Liang, S., Mu, C., and Zhang, Y. (2020). Risk factors and a nomogram for predicting intracranial hemorrhage in stroke patients undergoing thrombolysis. *Neuropsych. Dis. Treat.* 16, 1189–1197. doi: 10.2147/ndt.s250648