



# An Investigation of Deep Learning Models for EEG-Based Emotion Recognition

Yaqing Zhang<sup>1,2</sup>, Jinling Chen<sup>2</sup>, Jen Hong Tan<sup>3</sup>, Yuxuan Chen<sup>2</sup>, Yunyi Chen<sup>2</sup>, Dihan Li<sup>2</sup>, Lei Yang<sup>2</sup>, Jian Su<sup>4\*</sup>, Xin Huang<sup>5\*</sup> and Wenliang Che<sup>1\*</sup>

<sup>1</sup> Department of Cardiology, Shanghai Tenth People's Hospital, Tongji University School of Medicine, Shanghai, China, <sup>2</sup> Department of Software Engineering, School of Informatics Xiamen University (National Demonstration Software School), Xiamen, China, <sup>3</sup> Department of Computer and Software, Institute of System Science, National University of Singapore, Singapore, Singapore, <sup>4</sup> Nanjing University of Information Science and Technology, Nanjing, China, <sup>5</sup> School of Software, Jiangxi Normal University, Nanchang, China

## OPEN ACCESS

### Edited by:

Yizhang Jiang,  
Jiangnan University, China

### Reviewed by:

Yuanpeng Zhang,  
Nantong University, China  
Shan Zhong,  
Changshu Institute of  
Technology, China

### \*Correspondence:

Jian Su  
sj890718@gmail.com  
Xin Huang  
xinhuang@jxnu.edu.cn  
Wenliang Che  
chewenliang@tongji.edu.cn

### Specialty section:

This article was submitted to  
Neuroprosthetics,  
a section of the journal  
Frontiers in Neuroscience

**Received:** 29 October 2020

**Accepted:** 26 November 2020

**Published:** 23 December 2020

### Citation:

Zhang Y, Chen J, Tan JH, Chen Y, Chen Y, Li D, Yang L, Su J, Huang X and Che W (2020) An Investigation of Deep Learning Models for EEG-Based Emotion Recognition.  
*Front. Neurosci.* 14:622759.  
doi: 10.3389/fnins.2020.622759

Emotion is the human brain reacting to objective things. In real life, human emotions are complex and changeable, so research into emotion recognition is of great significance in real life applications. Recently, many deep learning and machine learning methods have been widely applied in emotion recognition based on EEG signals. However, the traditional machine learning method has a major disadvantage in that the feature extraction process is usually cumbersome, which relies heavily on human experts. Then, end-to-end deep learning methods emerged as an effective method to address this disadvantage with the help of raw signal features and time-frequency spectrums. Here, we investigated the application of several deep learning models to the research field of EEG-based emotion recognition, including deep neural networks (DNN), convolutional neural networks (CNN), long short-term memory (LSTM), and a hybrid model of CNN and LSTM (CNN-LSTM). The experiments were carried on the well-known DEAP dataset. Experimental results show that the CNN and CNN-LSTM models had high classification performance in EEG-based emotion recognition, and their accurate extraction rate of RAW data reached 90.12 and 94.17%, respectively. The performance of the DNN model was not as accurate as other models, but the training speed was fast. The LSTM model was not as stable as the CNN and CNN-LSTM models. Moreover, with the same number of parameters, the training speed of the LSTM was much slower and it was difficult to achieve convergence. Additional parameter comparison experiments with other models, including epoch, learning rate, and dropout probability, were also conducted in the paper. Comparison results prove that the DNN model converged to optimal with fewer epochs and a higher learning rate. In contrast, the CNN model needed more epochs to learn. As for dropout probability, reducing the parameters by ~50% each time was appropriate.

**Keywords:** EEG, emotion recognition, DNN (deep neural network), CNN (convolutional neural network), CNN-LSTM

## INTRODUCTION

There are many research methods applied to real-time emotion recognition. For example, researchers use electroencephalogram (EEG) signals and peripheral physiological such as ECG, respiration, skin resistance, and blood pressure to carry out emotion recognition research (Horlings et al., 2008). Among them, the EEG signal in the objective physiological signal is directly generated

by the central nervous system, which is closely related to human emotional states (Jiang et al., 2020b).

There are usually two machine learning strategies for analyzing EEG signals: step-by-step machine learning and end-to-end deep learning (Yang et al., 2020). Step-by-step machine learning mainly involves three steps: the first step is to obtain the digital data by sampling the analog signals, known as signal preprocessing. The second step is artificial feature extraction, which is to calculate the features using feature extraction formulas. Finally, the features are classified using machine learning methods to achieve the emotion classification result. Wavelet transform and entropy measures are widely used in feature extraction (Zhang et al., 2018). Murugappan et al. (2010) used the “db4” wavelet function for deriving a set of conventional and modified energy-based features from EEG signals for classifying emotions. Paul et al. (2015) used the multifractal detrended fluctuation analysis (MFDFA) method to extract features and used a support vector machine (SVM) to categorize the EEG feature space related to various emotional states into their respective classes. Jiang et al. (2020a) used transfer learning to reduce the differences in data distribution between the training and testing data (Yang et al., 2016; Jiang et al., 2017). Besides, they proposed a novel negative-transfer-resistant fuzzy clustering model (Jiang et al., 2015) with a shared cross-domain transfer latent space (Jiang et al., 2019).

However, it is difficult to cover all the implied features by manual extraction, and the formulae used to extract time-domain and frequency-domain features are often very complex. In addition, EEG signals are susceptible to noises such as electromyographic artifacts, which create serious interference in the progressive machine learning approach. In view of the above situations, some end-to-end deep learning methods are used to solve these problems. Alhagry et al. (2017) proposed a long short-term memory (LSTM) model to learn features from EEG signals. The classification accuracy reached 85.65, 85.45, and 87.99% for different labels. Schirrmeyer et al. (2017) used convolutional neural networks (CNN) for EEG decoding and visualization which have shown great potential when applied to end-to-end emotion recognition based on EEG-signals. Zhang et al. (2017) improved the entirely automatic feature extraction of MWL classification which then had effective high performance compared with traditional machine learning methods.

Since the deep learning models for EEG-based emotion recognition are still in their infancy, there is still a lot of room for adjustment in model structure and parameter settings. In this paper, we investigated the application of existing deep learning models widely used in this field, and implemented several popular deep learning models including deep neural networks (DNN), convolutional neural networks (CNN), long short-term memory (LSTM), and a hybrid model of convolutional neural networks and long short-term memory (CNN-LSTM) for EEG emotion recognition.

Firstly, we extracted 63 s of 32-channel EEG data from 40 trials of 32 subjects. In order to improve the classification efficiency, we selected 14 channels which were most suitable for EEG emotion classification. We built two feature datasets, including RAW data and standard (STD) data. STD data were extracted by calculating

eight eigenvalues including the maximum, standard deviation, kurtosis, and so on. In order to make efficient use of the data, we used a 10-fold cross-validation method to build the dataset for each sample before training the model. We put the pre-processed feature datasets into four deep learning models, classifying the emotion in the valence dimension and arousal dimension to four labels by one-hot encoding. In terms of model design selection, we adjusted the learning rate, epoch, and dropout probability, and compared the applicable values of different models. Finally, we obtained the comparison results of the four models.

The rest of this article is organized as follows:

Data description, data preprocessing, deep learning models for emotion recognition, experiments, conclusion, and references.

## DATA DESCRIPTION

The experiment was carried out on the DEAP dataset (Koelstra et al., 2012). The dataset was developed by a team of researchers at Queen Mary University of London and is a large multimodal database for the analysis of spontaneous emotions. It contains EEG, ECG, EMG, and other peripheral physiological signals. To collect the signals, 32 subjects were asked to watch 40 segments of 1-min music videos which represented different emotions. Their corresponding brain signals were collected as they watched the videos. After watching each video, participants rated their emotional responses to the 40 music videos on a scale of one to nine based on excitement, control, and how much they liked and were familiar with the videos.

The DEAP database includes two parts: online evaluation and physiological experiment. The online evaluation mainly contains basic information about the initial stimulus material. The physiological experiment mainly contains information on the experiment, including the number of experimental subjects, the rating values, and the recorded signals. The rating scales include arousal, valence, dominance, liking, and familiarity. The rating value from small to large indicates that each index is from negative to positive, from weak to strong.

The DEAP dataset contains 32 groups of EEG data in total, corresponding to the experimental data of 32 subjects (s01–s32). The data of each subject contains two arrays: *data* and *labels*.

## DATA PREPROCESSING

### The Pre-processing of RAW Data

In this paper, the *data* array we used had already been preprocessed, in which the EEG data were desampled, the sampling frequency became 128 Hz, and then the signal was filtered to 4–45 Hz through a band-pass filter. Then the EEG data were averaged to the same reference. We chose 63 s as the reference length of each trail, of which the first 3 s were the preparing time, and the other 60 s were collected during the watching of the video. Therefore, in every separate trail, there were  $63 \times 128 \text{ Hz} = 8,064$  sampling points for each channel.

In order to simplify the training difficulty and improve the accuracy of emotion recognition, we selected 14 corresponding electrodes of the channels which had the most significant

**TABLE 1** | The selected EEG channels.

Channel no.	Channel content
1	Fp1
2	AF3
3	F3
4	F7
7	C3
11	P3
13	PO3
17	Fp2
18	AF4
20	F4
21	F8
25	C4
29	P4
31	PO4

impact on the generation of emotion. **Table 1** shows the 14 selected channels and their corresponding electrodes. **Figure 1** shows the international 10–20 standard system electrode position distribution map, in which the 14 selected electrodes were labeled with different colors to indicate the different influence on emotion generation.

The total EEG cycles were 40 tests per subject. We set the data dimension of the dataset to 40 (epochs)\*14 (channels)\*8,064 (time points). In order to distinguish from the feature extraction data indicated later, we used RAW data to represent this  $40 \times 14 \times 8,064$  data array.

## The Pre-processing of STD Data

Feature extraction is necessary in the construction of a deep learning neural network for an emotion recognition task. Of all the domains, we chose the characteristics of time and frequency as the data features. Taking the time point of the raw data array processed in the previous section as the raw time domain feature forms **RAW** data.

We used eight statistical methods to extract the features of the time domain. The following mathematical formula shows how these features were calculated, where  $E(n)$  stands for the signal value of the  $n$  time points.

The mean of the original signal:

$$\mu_E = \frac{1}{N} \sum_{n=1}^N E(n) \quad (1)$$

The standard deviation of the original signal:

$$\sigma_E = \sqrt{\frac{1}{N} \sum_{n=1}^N (E(n) - \mu_E)^2} \quad (2)$$

The maximum of the original signal:

$$E_{max} = \max E(n) \quad (3)$$

The minimum of the original signal:

$$E_{min} = \min E(n) \quad (4)$$

Average absolute value of the first difference:

$$\delta_E = \frac{1}{N-1} \sum_{n=1}^{N-1} |E(n+1) - E(n)| \quad (5)$$

Average absolute value of the second difference:

$$\lambda_E = \frac{1}{N-2} \sum_{n=1}^{N-2} |E(n+2) - 2E(n+1) + E(n)| \quad (6)$$

The skewness of the original signal (Mardia, 1970):

$$Skew = \frac{1}{N} \sum_{n=1}^N \left[ \left( \frac{E(n) - \mu_E}{\sigma_E} \right)^3 \right] \quad (7)$$

The kurtosis of the original signal (deCarlo, 1997):

$$Kurtosis = \frac{N(N+1)}{(N-1)(N-2)(N-3)} \sum_{n=1}^N \left( \frac{E(n) - \mu_E}{\sigma_E} \right)^4 - \frac{3(N-1)^2}{(N-2)(N-3)} \quad (8)$$

The combination of the eight statistical features into an eigenvector to represent the time domain features are known as the **STD** data. We divided the 63 s of each trail into 1 s segments, each segment contained 128 sampling points. Then the **STD** data array shape was 40(epoch) \* 14 (channel) \* 63 (time segment) \* 128 (sampling point).

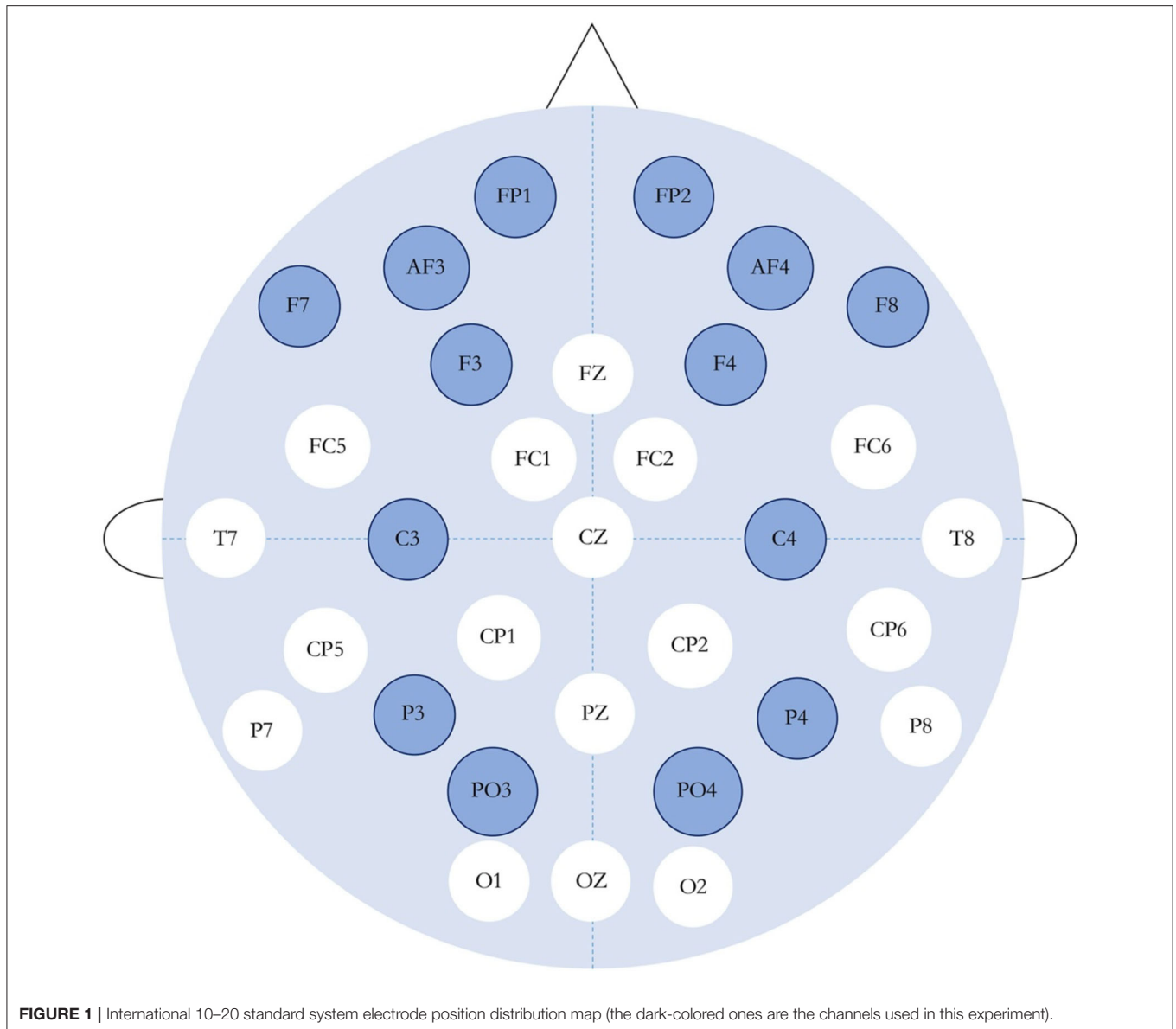
To compare the performance of different feature extraction methods under different deep learning neural networks, we used **RAW** and **STD** as two different features to train the models.

## The Description of Data and Label

The labels array was a  $40 \times 4$  two-dimensional array, which represented the video/trial  $\times$  label (valence, arousal, dominance, liking) corresponding to the self-evaluation of each MV. The **valence** level (on a scale of 1 to 9) indicated how happy people felt. People with a happier mood were tested in a higher valence. The **arousal** level (on a scale of 1 to 9) represented the activation of feeling in people. People with a high level of activation generated a higher arousal rating. In this paper, we considered **valence** and **arousal** as the two dimensions of measurement to classify the emotions of the subjects.

In order to transform the continuous rating into a discrete tag form, we used the one-hot encoding form to classify the four types of emotions, as shown in **Figure 2**. The emotions of the subjects were divided into four categories: high arousal/high valence, high arousal/low valence, low arousal/high valence, and low arousal/low valence, which were expressed as [0,0,0,1], [0,1,0,0], [0,0,1,0], and [1,0,0,0]. Thus, the shape of the **Labels** array was 40 (epochs)  $\times$  4 (label category).

This paper uses **RAW data**, **STD data**, and **Labels** as inputs for the neural network. The array description is shown in **Table 2**.



## DEEP LEARNING MODELS FOR EMOTION RECOGNITION

In this paper, we investigated widely used deep learning models for emotion recognition based on EEG signals. We implemented several popular deep learning models including a DNN, CNN, and LSTM for RAW data classification, and designed CNN-LSTM models for higher performance.

### Deep Neural Network Model

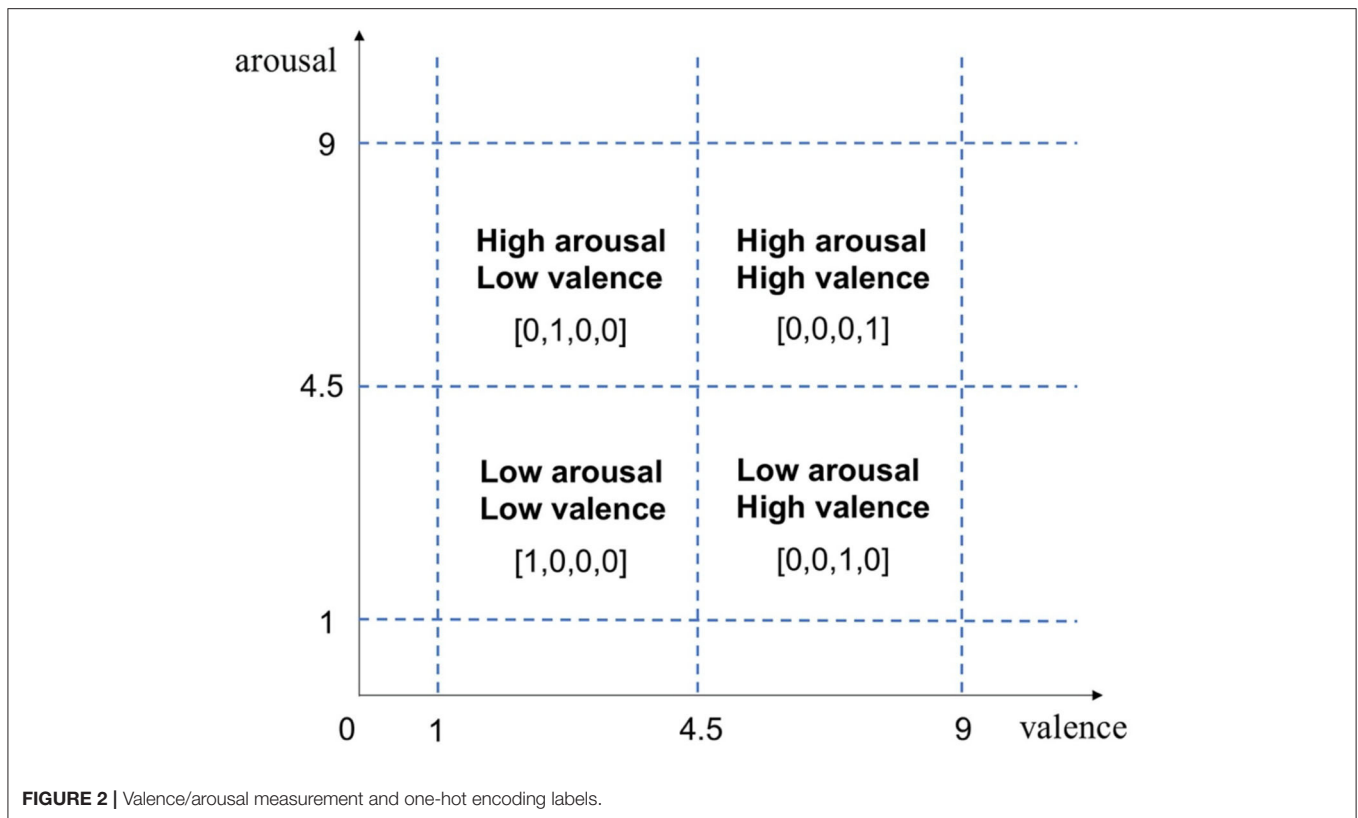
In the traditional sense, the neural network is also called a multi-layer perceptron. It is composed of an input layer, an output layer, and a number of hidden layers. Continuous functions such as Sigmoid or Tanh are used to simulate the response of neurons to excitation. The multi-layer perceptron can remove the constraint of the earlier discrete transmission function. However,

as the number of layers increases, the optimization function is more and more likely to fall into the local optimal solution. On the basis of the multi-layer perceptron, the DNN replaces the *Sigmoid* function with *ReLU*, *maxout*, and other activation functions, effectively overcoming the gradient disappearance problem (Hanin, 2019).

In this paper, we mainly used a fully connected DNN model as the basic model in emotion classification.

### Convolutional Neural Network Model

A convolutional neural network (CNN) has been applied widely in original signal processing and image recognition. A CNN has three significant characteristics: a local sensing field, weight sharing, and down sampling, which can decrease the complexity of the network. The high accuracy of the

**TABLE 2 |** Data description.

Array name	Array shape	Array contents
RAW data	40 × 14 × 8,064	trial no. × channel data
STD data	40 × 14 × 63 × 128	trial no. × time segment × sampling point
Label	40 × 4	trial no. × label (one-hot encoding)

recognition tasks is mainly because it can learn local non-linear features by convolution and non-linear activation functions, and express high-level features as the combination of low-level features. In addition, many CNNs use a pooling layer to create a rough representation of intermediate features, which makes the CNN more translation invariant (Chen et al., 2019).

For the CNN model, the convolution kernel is the key to automatic feature extraction (Cheng and Parhi, 2020). **Figure 3** shows the 1D-convolution kernel for the automatic feature extraction of our model.

The ReLU function is usually used as the activation function due to its simplicity of implementation. It can speed up calculation and convergence. The ReLU function has the following formula:

$$f(x) = \max(0, x) \quad (9)$$

The pooling layer is a structure for down sampling the features obtained from the convolutional layers, which can reduce the

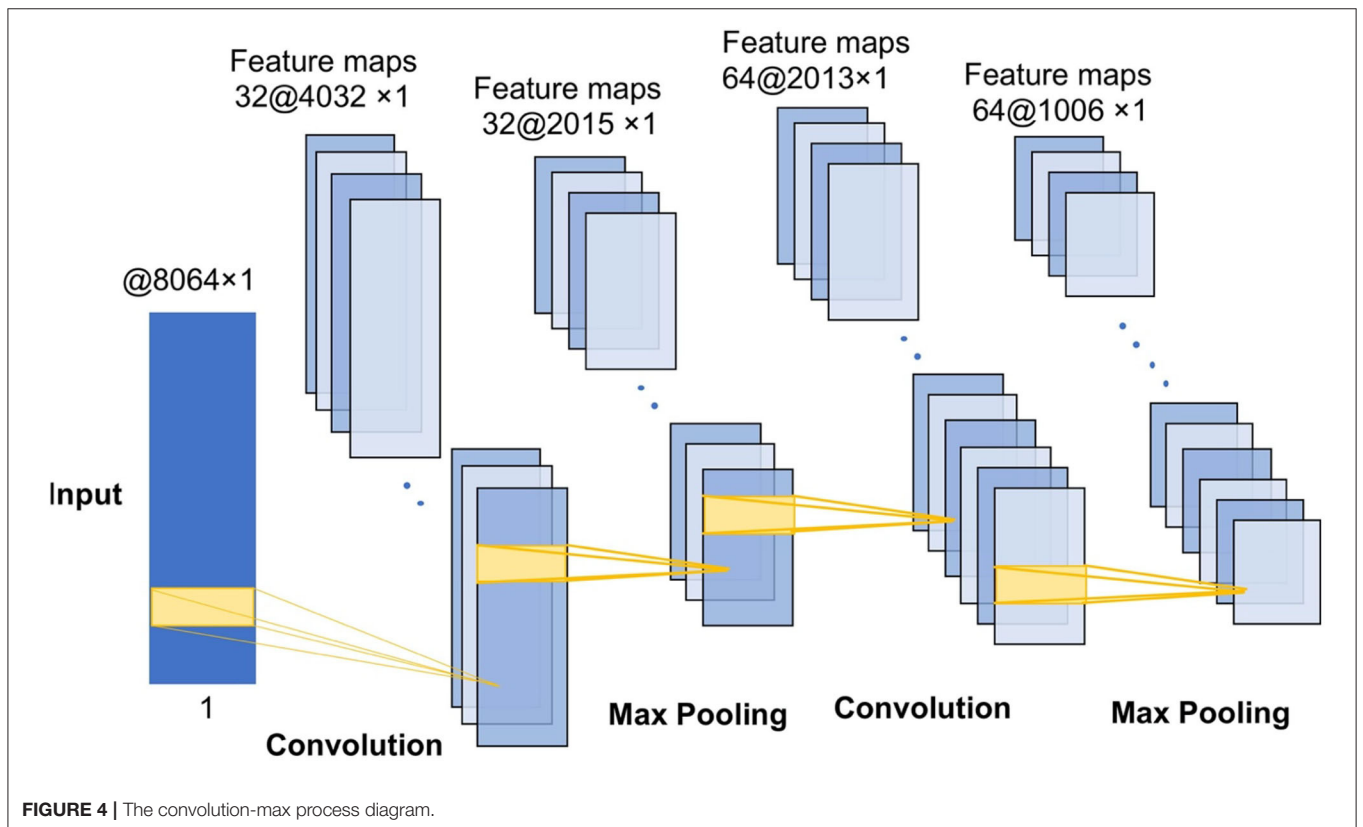
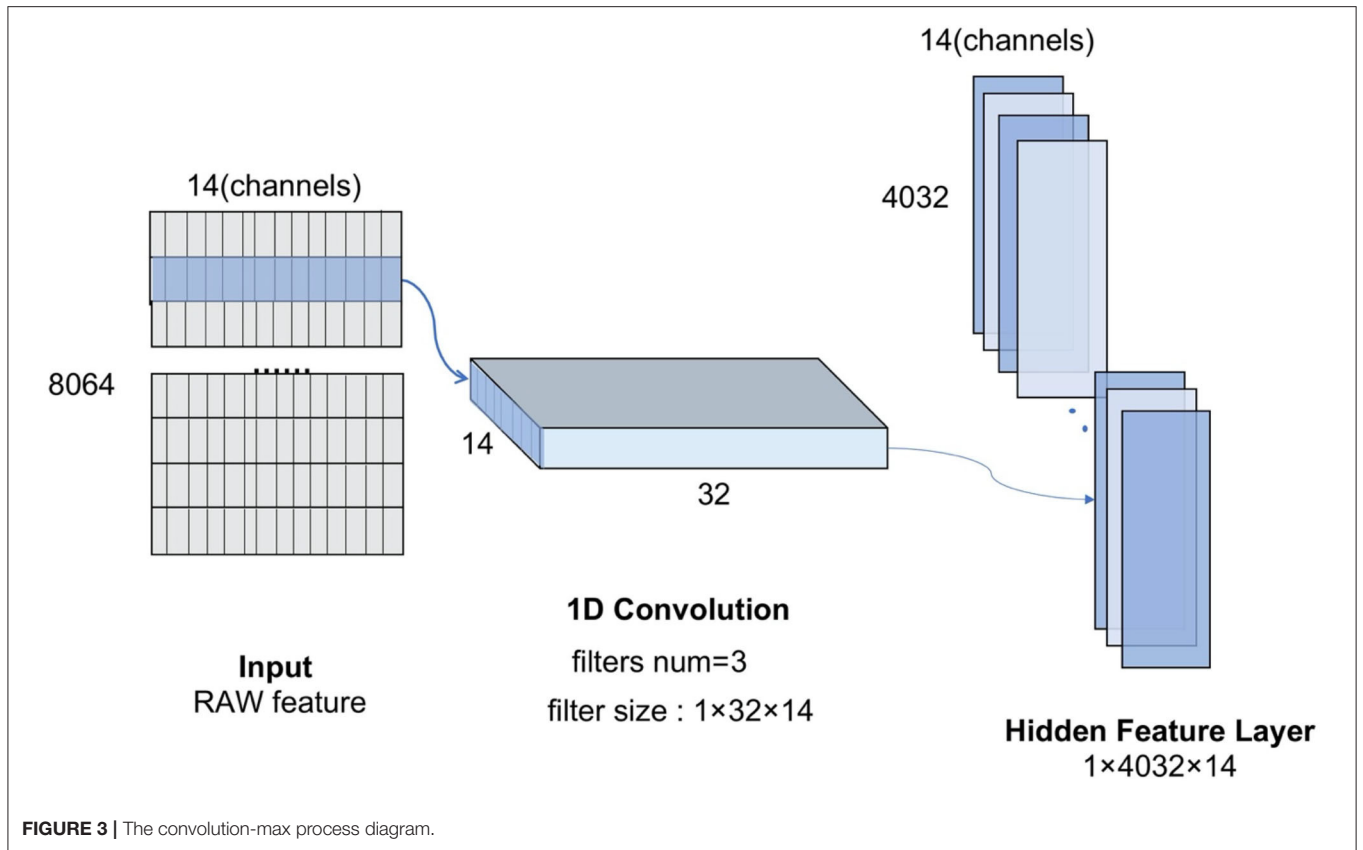
amount of computation and the degree of over-fitting of the network to some extent, thus improving the performance of the CNN model. The convolution-max-pooling process is shown in **Figure 4**.

Our CNN model has four convolution-max-pooling blocks, then a Flatten layer to expand the convolution results, followed by two full-connection layers, and a dense softmax layer. This configuration is the optimal model for the DEAP emotion classification dataset. **Figure 5** shows the structure of our deep CNN model.

## Long Short-Term Memory Model

A recurrent neural network (RNN) is a type of recursive neural network that inputs sequential data and performs recursion in the evolutionary direction of a sequence, connected by a chain of all the recurrent units (Graves et al., 2013). An LSTM network is a variant of the recurrent neural network, which is mainly used to process sequence information with a long time difference.

**Figure 6** is the schematic diagram of the LSTM unit. The LSTM unit inputs four variables from one input entry and three other gates, which is different from the neuron univariate input of other models. For each neuron in the neural network, the door is opened or closed by the value of input data and parameter weight, and these parameters can be obtained by model training. An LSTM network can solve the problem of gradient vanishing in back propagation by adding three gates. Many of these units are linked together in time series and can form an LSTM model, as the **Figure 7** shows.



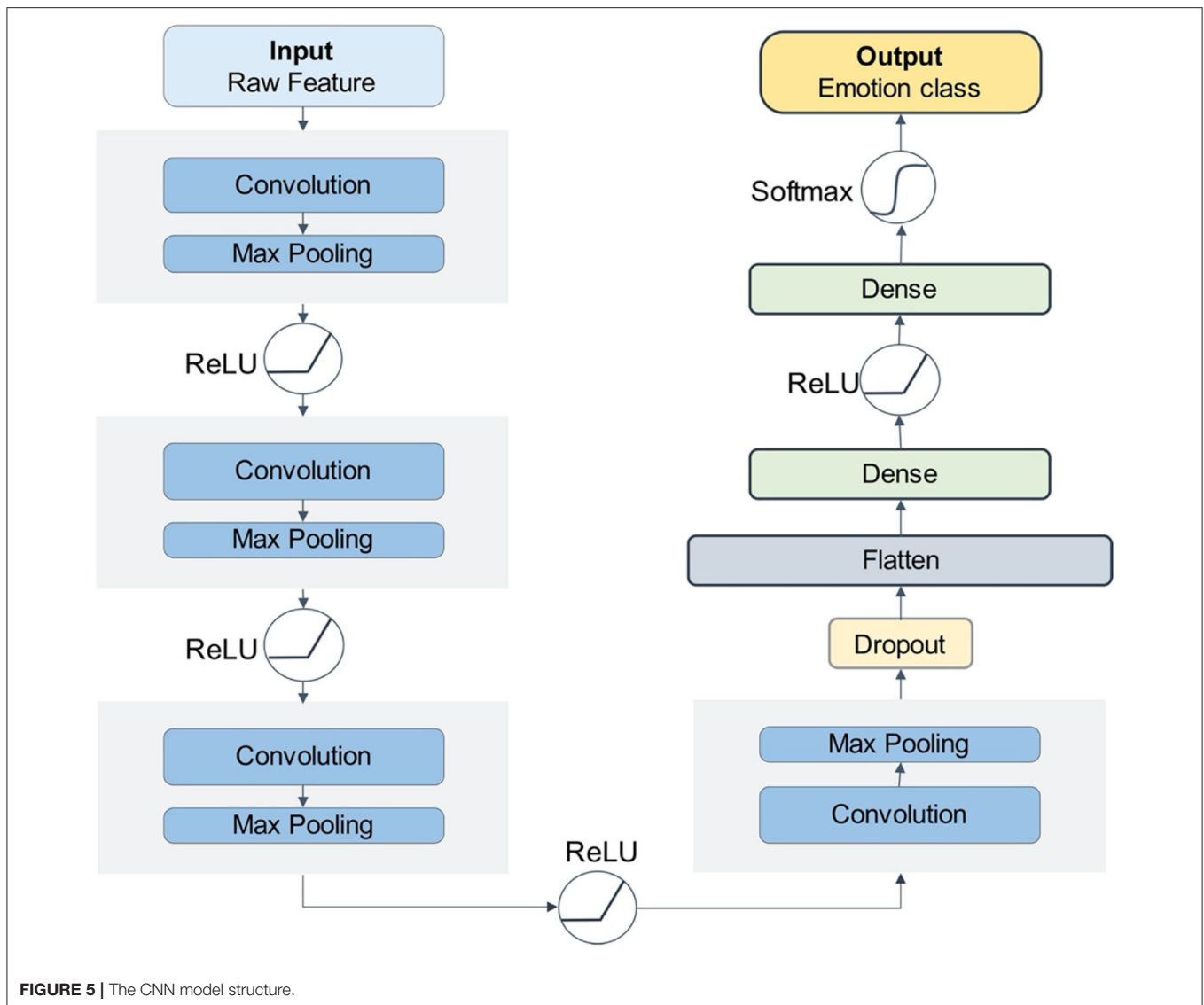


FIGURE 5 | The CNN model structure.

In this paper, we designed a four-layer LSTM network structure. The model takes **RAW** data as input, passes through four layers of the one-way LSTM network, then connects to a dropout layer, and finally reaches the full connection classification layer.

### CNN-LSTM Model

The CNN is good at extracting the spatial local relevant features of data, but it struggles to capture the long-term dependence relationship in sequence data, which can be remedied by the LSTM. So, a hybrid model of the CNN and LSTM have been proven to have good performance in natural signal recognition (Ma and Hovy, 2016; Zhao et al., 2019). Therefore, this paper proposed a CNN-LSTM hybrid network model of the CNN and LSTM serial.

In the **CNN-LSTM model**, the **RAW data** were taken as input and used the CNN model for feature extraction before entering the LSTM. After taking the input from the CNN layer,

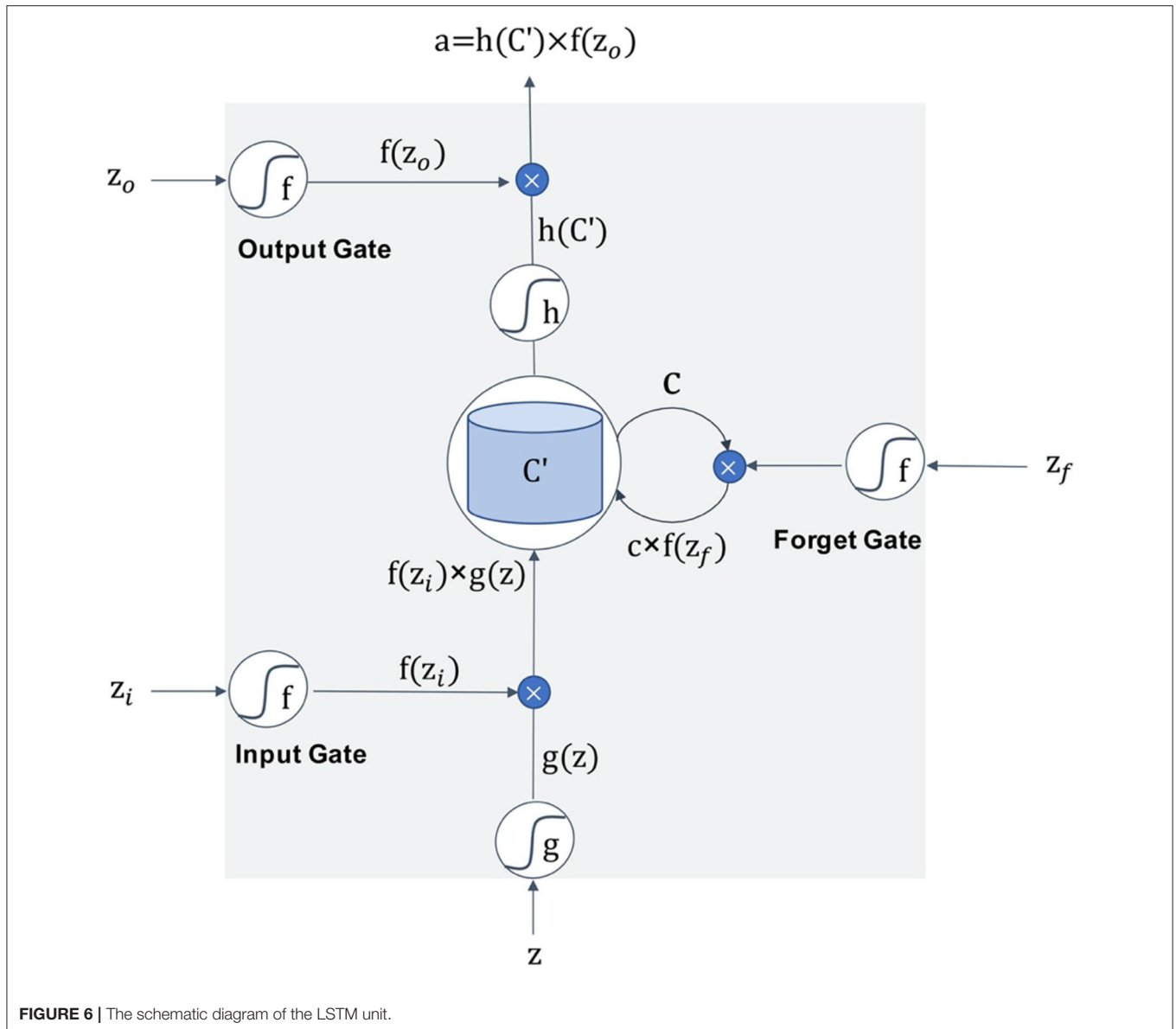
the LSTM units connected as a link and passed the result to the next layer, usually the fully connected dense layer and the softmax classification layer, see **Figure 8**.

The LSTM of the first layer contained 64 units and the second layer contained 32 units. We chose ReLU as the activation function of the LSTM layer in order to prevent the gradient vanishing. In addition, since the LSTM model had many more parameters than the other deep learning models, we added two dropout layers to prevent over-fitting of the training data. Finally, the full connection layer and the softmax function were used as the classification output layer.

## EXPERIMENTS

### Experimental Setup

In the experiments, we implemented the DNN, CNN, LSTM, and CNN-LSTM, respectively, adjusted the structural design of



the model, and optimized the parameters. In addition, it was mentioned that there are two machine learning strategies for analyzing EEG signals: step-by-step machine learning and end-to-end deep learning. In order to compare the two feature extracting methods, we took the **RAW** data and **STD** features, which had been pre-processed, as the input data of the models, respectively.

In terms of training models, we used the method of **10-fold cross-validation** to train the classifier. The original data were divided into 10 subsamples, with one subsample retained as the validation set and the other nine samples used as the training set. The cross-validation was repeated 10 times to create an average of the estimation results. This validation method helped us obtain a more reliable and stable model by using limited label data. We chose **Adam** as the optimizer of the models (Shindjalova et al., 2014).

To evaluate the classification performance of the model, we used **Acc** and **Loss** to represent the accuracy and loss. The calculation formula of **Acc** is:

$$Acc = \frac{CP + CN}{CP + CN + MN + MP} \quad (10)$$

In this formula, CP is the number of positive examples that were correctly classified, CN is the number of negative examples that were correctly classified, MN is the number of positive examples that were misclassified, and MP is the number of negative examples that were misclassified.

Because the classification options are one-hot encoding multi-dimensional vectors, we used **multi-classification cross-entropy** as the loss function for all the models (de Boer et al., 2005). The Loss of the model can be calculated by the following formula



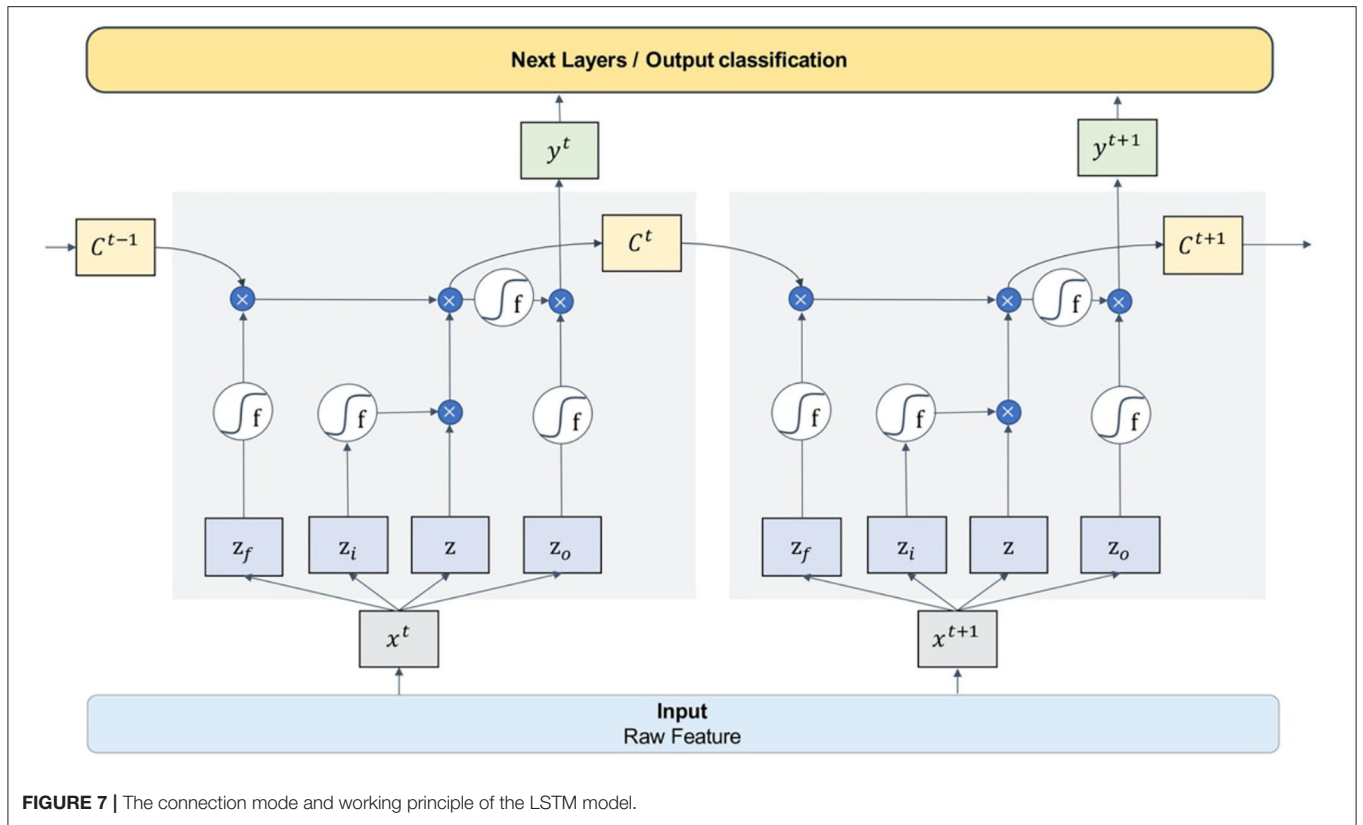


FIGURE 7 | The connection mode and working principle of the LSTM model.

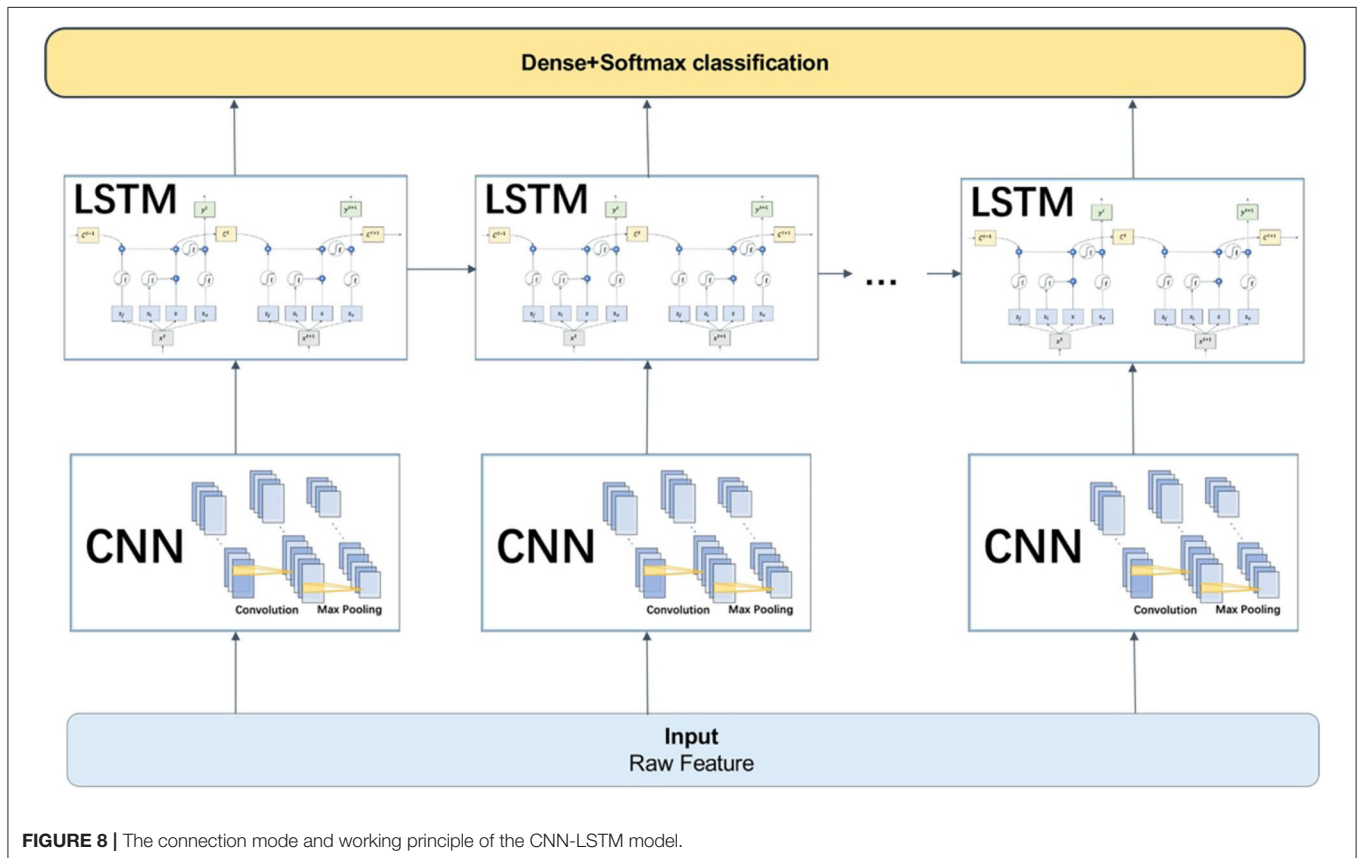


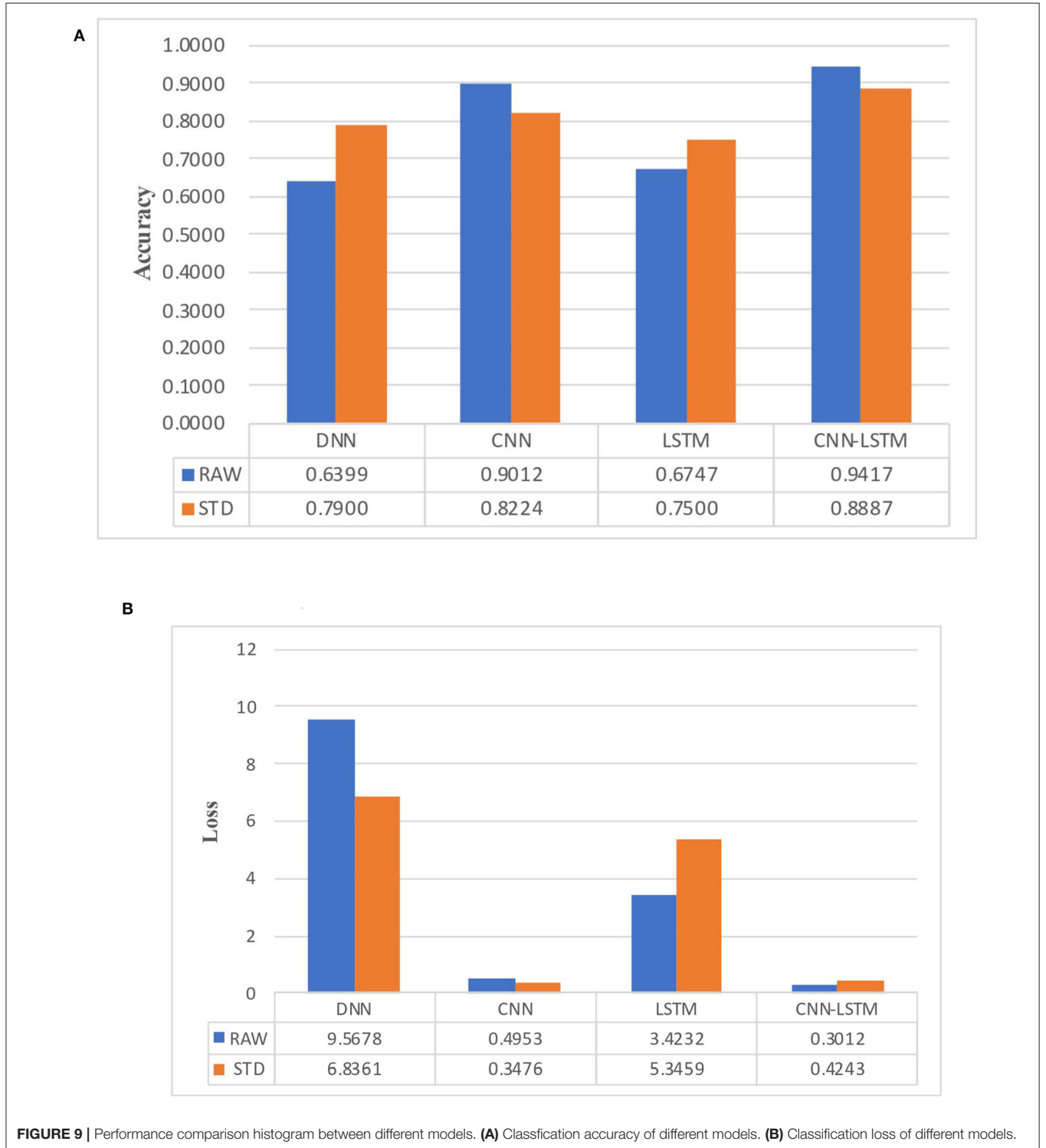
FIGURE 8 | The connection mode and working principle of the CNN-LSTM model.

**TABLE 3** | The Acc result of different models and different features.

Models \ Features	DNN	CNN	LSTM	CNN-LSTM
RAW	0.6399	0.9012	0.6747	0.9417
STD	0.7900	0.8224	0.7500	0.8887

**TABLE 4** | The Loss result of different models and different features.

Models \ Features	DNN	CNN	LSTM	CNN-LSTM
RAW	9.5678	0.4953	3.4232	0.3012
STD	6.8361	0.3476	5.3459	0.4243



**FIGURE 9** | Performance comparison histogram between different models. **(A)** Classification accuracy of different models. **(B)** Classification loss of different models.

**TABLE 5** | The influence of different epoch and learning rates for the DNN and CNN models.

Epoch	Learning rate	DNN	CNN
3	0.001	55.3	26.3
3	0.05	59.2	35.9
3	0.01	62.5	43.2
10	0.001	63.3	58.3
10	0.05	63.4	62.5
10	0.01	63.4	75.4
20	0.001	63.3	80.3
20	0.05	63.4	78.5
20	0.01	63.4	79.2

(Zhang et al., 2021):

$$\text{Loss} = - \sum_{j=1}^T y_j \log P_j \quad (11)$$

where  $y_j$  is the classification of the  $j$  th sample and  $P_j$  is the probability of the  $j$  th sample to be recognized as  $y_j$ .

## Accuracy and Comparison Results

The training and test set included 55% positive samples and 45% negative samples, so it can be considered that the number of positive and negative samples was basically consistent. We repeated each model testing five times and averaged the results of those tests. The **Tables 3, 4** show the experimental results of **Acc** and **Loss**. **Figure 9** shows a bar chart comparison of them.

## Additional Analysis and Results

During the training of the model, we compared the selection of some parameters and fine tuned the models. For the four architectures described above, we evaluated several design choices including learning rate, epoch, and dropout probability.

### Epoch and Learning Rate

The epoch is the number of iterations during training. The learning rate determines the convergence speed and result accuracy of the model. Taking the CNN and LSTM as examples, the training results of different epochs and learning rates were adjusted and shown in **Table 5**.

It can be seen that the DNN model converged to optimal with fewer epochs and a higher learning rate. In contrast, the CNN model needed more epochs to learn. We chose 10 epoches and 0.01 as the learning rate for the DNN model. For the CNN model, we set 20 epoches and used the self-regulated learning rate callback function to autonomously adjust according to the training condition.

### Dropout Probability

Since the dropout setting is very important for the gradient descent process of the LSTM model, we set the dropout

**TABLE 6** | The influence of dropout probability for the LSTM and CNN-LSTM models.

Dropout probability (%)	LSTM	CNN-LSTM
20	0.58	0.62
50	0.71	0.89
90	0.51	0.48

probability at 20, 50, and 80%, respectively, and tested the LSTM model and CNN-LSTM model.

It can be seen in **Table 6** that reducing the parameters by ~50% each time was appropriate.

## Result Discussion

The experimental results show that the CNN model and CNN-LSTM had better performance in emotion recognition classification, and were consistently more stable and had higher accuracy in RAW data than STD data. This result verified the advantages of the end-to-end deep learning mode we mentioned earlier, and proved that the CNN can be regarded as a feature extractor in end-to-end classification, which can automatically extract hidden features in EEG signals. It comes to a conclusion that the CNN feature extractor is more suitable for emotion recognition than manual feature extraction in emotion recognition based on EEG signals of the DEAP dataset.

The performance of the DNN model was not as good as the other complex models, but the training speed was fast. The DNN model could achieve optimal performance in fewer epochs and at a faster learning rate. The LSTM model was not as stable as the CNN and CNN-LSTM models. Moreover, with the same number of parameters, the training speed of the LSTM was much slower and it struggled to achieve convergence.

In addition, we found that the DNN model only needed a few training epochs to achieve convergence. The method of automatically adjusting the learning rate was suitable for the CNN and CNN-LSTM models. It was better to set the dropout rate of the LSTM at a medium level.

## CONCLUSION

In this paper, several deep learning models for the classification of emotions were established and their performance was verified on the DEAP dataset. It was concluded that the CNN model or CNN-LSTM hybrid models were more effective in emotional classification than traditional machine learning methods. In particular, the automatic feature extraction of EEG signals was proven to have high performance in end-to-end multi-dimensional emotion recognition.

In the next step of research, we will try to obtain more data on EEG signals and implement other EEG-based emotional recognition models with more variables considered.

## DATA AVAILABILITY STATEMENT

Publicly available datasets were analyzed in this study. This data can be found at: DEAPdataset <http://www.eecs.qmul.ac.uk/mmv/datasets/deap/index.html>.

## AUTHOR CONTRIBUTIONS

YZ was responsible for writing the manuscript and carrying out experiments. JC, YuxC, YunC, and DL collected data

for the experiments. LY checked the English grammar of the article. All authors contributed to the article and approved the submitted version.

## FUNDING

This work was supported by the Fundamental Research Funds for the Central Universities, Grant No. 22120190211.

## REFERENCES

- Alhagry, S., Aly, A., and El-Khoribi, R. A. (2017). Emotion recognition based on EEG using LSTM recurrent neural network. *Int. J. Adv. Comput. Sci. Appl.* 8, 355–358. doi: 10.14569/IJACSA.2017.081046
- Chen, J. X., Zhang, P. W., Mao, Z. J., Huang, Y. F., Jiang, D. M., and Zhang, Y. N. (2019). Accurate EEG-based emotion recognition on combined features using deep convolutional neural networks. *IEEE Access. IEEE* 7, 44317–44328. doi: 10.1109/ACCESS.2019.2908285
- Cheng, C., and Parhi, K. K. (2020). Fast 2D convolution algorithms for convolutional neural networks. *IEEE Trans. Circuits Syst. I Regular Pap.* 67, 1678–1691. doi: 10.1109/TCSI.2020.2964748
- de Boer, P. T., Kroese, D. P., Mannor, S., and Rubinstein, R. Y. (2005). A tutorial on the cross-entropy method. *Ann. Operat. Res.* 134, 19–67. doi: 10.1007/s10479-005-5724-z
- deCarlo, L. T. (1997). On the meaning and use of kurtosis. *Psychol. Methods* 2, 292–307. doi: 10.1037/1082-989X.2.3.292
- Graves, A., Mohamed, A., and Hinton, G. (2013). “Speech recognition with deep recurrent neural networks,” in *2013 IEEE International Conference on Acoustics, Speech and Signal Processing. (IEEE)*, 6645–6649.
- Hanin, B. (2019). Universal function approximation by deep neural nets with bounded width and ReLU activations. *Mathematics* 7:992. doi: 10.3390/math7100992
- Horlings, R., Dacu, D., and Rothkrantz, L. J. M. (2008). “Emotion recognition using brain activity,” in *Proceedings of the 9th International Conference on Computer Systems and Technologies and Workshop for PhD Students in Computing - CompSysTech '08* (New York, NY: ACM Press).
- Jiang, Y., Chung, F. L., Wang, S., Deng, Z., Wang, J., and Qian, P. (2015). Collaborative fuzzy clustering from multiple weighted views. *IEEE Trans. Cybernet.* 45, 688–701. doi: 10.1109/TCYB.2014.2334595
- Jiang, Y., Gu, X., Wu, D., Hang, W., Xue, J., Qiu, S., et al. (2020a). “A novel negative-transfer-resistant fuzzy clustering model with a shared cross-domain transfer latent space and its application to brain CT image segmentation,” in *IEEE/ACM Transactions on Computational Biology and Bioinformatics* (IEEE).
- Jiang, Y., Wu, D., Deng, Z., Qian, P., Wang, J., Wang, G., et al. (2017). Seizure classification From EEG signals using transfer learning, semi-supervised learning and TSK fuzzy system. *IEEE Trans. Neural Syst. Rehabil. Eng.* 25, 2270–2284. doi: 10.1109/TNSRE.2017.2748388
- Jiang, Y., Zhang, Y., Lin, C., Wu, D., and Lin, C. T. (2020b). “EEG-based driver drowsiness estimation using an online multi-view and transfer TSK fuzzy system,” in *IEEE Transactions on Intelligent Transportation Systems* (IEEE), 1–13.
- Jiang, Y., Zhao, K., Xia, K., Xue, J., Zhou, L., Ding, Y., et al. (2019). A novel distributed multitask fuzzy clustering algorithm for automatic MR brain image segmentation. *J. Med. Syst.* 43:118. doi: 10.1007/s10916-019-1245-1
- Koelstra, S., Muhl, C., Soleymani, M., Lee, J. S., Yazdani, A., Ebrahimi, T., et al. (2012). DEAP: a database for emotion analysis; using physiological signals. *IEEE Trans. Affect. Comput.* 3, 18–31. doi: 10.1109/T-AFFC.2011.15
- Ma, X., and Hovy, E. (2016). “End-to-end Sequence Labeling via Bi-directional LSTM-CNNs-CRF,” in *Proceedings of the 54th Annual Meeting of the Association for Computational Linguistics (Volume 1: Long Papers)* (Stroudsburg, PA: Association for Computational Linguistics), 1064–1074. doi: 10.18653/v1/P16-1101
- Mardia, K. V. (1970). Measures of multivariate skewness and kurtosis with applications. *Biometrika* 57, 519–530. doi: 10.1093/biomet/57.3.519
- Murugappan, M., Ramachandran, N., and Sazali, Y. (2010). Classification of human emotion from EEG using discrete wavelet transform. *J. Biomed. Sci. Eng.* 3, 390–396. doi: 10.4236/jbise.2010.34054
- Paul, S., Mazumder, A., Ghosh, P., Tibarewala, D. N., and Vimalarani, G. (2015). “EEG based emotion recognition system using MFDDFA as feature extractor,” in *2015 International Conference on Robotics, Automation, Control and Embedded Systems (RACE)* (IEEE).
- Schirrmeyer, R. T., Springenberg, J. T., Fiederer, L. D. J., Glasstetter, M., Eggensperger, K., Tangermann, M., et al. (2017). Deep learning with convolutional neural networks for EEG decoding and visualization. *Hum. Brain Mapp.* 38, 5391–5420. doi: 10.1002/hbm.23730
- Shindjalova, R., Prodanova, K., and Svechtarov, V. (2014). “Modeling data for tilted implants in grafted with bio-oss maxillary sinuses using logistic regression,” in *Energy Education Science and Technol Part B Social and Educational Studies*, 58–62.
- Yang, C., Deng, Z., Choi, K. S., and Wang, S. (2016). Takagi-sugeno-kang transfer learning fuzzy logic system for the adaptive recognition of epileptic electroencephalogram signals. *IEEE Trans. Fuzzy Syst.* 24, 1079–1094. doi: 10.1109/TFUZZ.2015.2501438
- Yang, P., Wang, D., Kagn, Z. J., Li, T., Fu, L. H., and Yu, Y. R. (2020). Prediction model of paroxysmal atrial fibrillation based on pattern recognition and ensemble CNN-LSTM. *Zhejiang Daxue Xuebao* 54, 1039–1048.
- Zhang, J., Li, S., and Yin, Z. (2017). Pattern classification of instantaneous mental workload using ensemble of convolutional neural networks. *IFAC PapersOnLine* 50, 14896–14901. doi: 10.1016/j.ifacol.2017.08.2534
- Zhang, Y., Ishibuchi, H., and Wang, S. (2018). Deep Takagi-sugeno-kang fuzzy classifier with shared linguistic fuzzy rules. *IEEE Trans. Fuzzy Syst.* 26, 1535–1549. doi: 10.1109/TFUZZ.2017.2729507
- Zhang, Y., Wang, S., Xia, K., Jiang, Y., Qian, P., and Alzheimer's Disease Neuroimaging Initiative. (2021). Alzheimer's disease multiclass diagnosis via multimodal neuroimaging embedding feature selection and fusion. *Inform. Fusion* 66, 170–183. doi: 10.1016/j.inffus.2020.09.002
- Zhao, J., Mao, X., and Chen, L. (2019). Speech emotion recognition using deep 1D & 2D CNN LSTM networks. *Biomed. Signal Process. Control* 47, 312–323. doi: 10.1016/j.bspc.2018.08.035

**Conflict of Interest:** The authors declare that the research was conducted in the absence of any commercial or financial relationships that could be construed as a potential conflict of interest.

Copyright © 2020 Zhang, Chen, Tan, Chen, Chen, Li, Yang, Su, Huang and Che. This is an open-access article distributed under the terms of the Creative Commons Attribution License (CC BY). The use, distribution or reproduction in other forums is permitted, provided the original author(s) and the copyright owner(s) are credited and that the original publication in this journal is cited, in accordance with accepted academic practice. No use, distribution or reproduction is permitted which does not comply with these terms.