



OPEN ACCESS

EDITED BY

Liliana Otero,
Pontificia Universidad Javeriana, Colombia

REVIEWED BY

Mangala Hegde,
Indian Institute of Technology Guwahati, India
Maria Camila Pantoja Ruiz,
King's College London, United Kingdom

*CORRESPONDENCE

Rui Huang

✉ Henry0923@whu.edu.cn

Peijun Liu

✉ lpjwalk@163.com

[†]These authors have contributed equally to this work

RECEIVED 02 October 2023

ACCEPTED 29 November 2023

PUBLISHED 14 December 2023

CITATION

Tang W, Li F, Huang R and Liu P (2023) Causal relationship between levels of myeloperoxidase and obstructive sleep apnea: a bidirectional two-sample Mendelian randomization study.

Front. Neurol. 14:1305580.

doi: 10.3389/fneur.2023.1305580

COPYRIGHT

© 2023 Tang, Li, Huang and Liu. This is an open-access article distributed under the terms of the [Creative Commons Attribution License \(CC BY\)](https://creativecommons.org/licenses/by/4.0/). The use, distribution or reproduction in other forums is permitted, provided the original author(s) and the copyright owner(s) are credited and that the original publication in this journal is cited, in accordance with accepted academic practice. No use, distribution or reproduction is permitted which does not comply with these terms.

Causal relationship between levels of myeloperoxidase and obstructive sleep apnea: a bidirectional two-sample Mendelian randomization study

Weihua Tang^{1,2†}, Fang Li^{1†}, Rui Huang^{3*} and Peijun Liu^{1*}

¹Department of Respiratory and Critical Care Medicine, The Central Hospital of Enshi Tujia and Miao Autonomous Prefecture, Enshi, China, ²Department of Radiology, The Central Hospital of Enshi Tujia and Miao Autonomous Prefecture, Enshi, China, ³Department of Cardiology, The Central Hospital of Enshi Tujia and Miao Autonomous Prefecture, Enshi, China

Background: Several observational studies have investigated the association between myeloperoxidase (MPO) and obstructive sleep apnea (OSA). However, the nature of this relationship remains uncertain due to potential selection and confounding biases. To resolve this, we conducted a bidirectional two-sample Mendelian randomization (MR) study to scrutinize the causal relationship between MPO and OSA.

Methods: Instrumental variables (IVs) for OSA were sourced from the publicly available FinnGen dataset, encompassing 38,998 OSA cases and 336,659 controls. Data on MPO were sourced from a study of 21,758 individuals conducted by the European Bioinformatics Institute (EBI). The primary MR analysis utilized the inverse-variance weighted (IVW) method, with MR-Egger intercept and leave-one-out methods assessing pleiotropy and Cochran's Q test determining heterogeneity.

Results: The IVW analysis indicated a causal relationship between heightened MPO levels and an increased incidence of OSA. Individuals with elevated MPO levels manifested a higher propensity to develop OSA, exhibiting an odds ratio (OR) of 1.075 and a 95% confidence interval (CI) of 1.011–1.143 ($p = 0.021$). Conversely, the reciprocal analysis unveiled no significant association between OSA and heightened MPO levels ($p = 0.643$). No directional pleiotropy was identified through the MR-Egger intercept test ($p > 0.05$).

Conclusion: Our study provides evidence of an association between elevated MPO levels and an increased incidence of OSA. However, OSA does not necessarily lead to elevated MPO levels. When patients present with high MPO levels, screening for OSA may be advisable, considering their clinical characteristics.

KEYWORDS

Mendelian randomization, OSA, MPO, IVW, causal relationship

Introduction

Obstructive sleep apnea (OSA) is a widespread sleep-related respiratory disorder impacting a substantial number of individuals globally, with prevalence rates varying between 9 and 38% (1). It has significant detrimental effects on both individuals and society. The primary characteristic of OSA is the recurrent obstruction of the upper airway during sleep, resulting from the relaxation of throat muscles and leading to partial or complete pauses in breathing and reduced airflow. Common symptoms include snoring, excessive daytime fatigue, morning headaches, difficulties in concentration, memory impairment, and decreased libido (2, 3). OSA is significantly linked to smoking. As a key risk factor, smoking can increase the likelihood of developing OSA by inducing inflammation and swelling in the upper respiratory tract, altering sleep architecture, affecting neural regulation, and causing increased relaxation of the pharyngeal muscles (4, 5). The diagnosis of OSA is primarily based on monitoring the apnea-hypopnea index (AHI) during a polysomnography test (6). The fundamental pathophysiological process propelling OSA is intermittent hypoxia stemming from repeated incidents of airway blockage while sleeping. This results in recurrent awakenings in the brain, sympathetic nervous system stimulation, and reduced blood oxygen saturation levels (7).

Myeloperoxidase (MPO), a constituent of the peroxidase enzyme family and released by activated white blood cells, functions as a significant marker for oxidative distress in inflammatory conditions (8). MPO has been implicated in endothelial dysfunction, atherosclerosis development, and vascular injuries (9). Research has elucidated a significant link between raised levels of MPO and an enhanced risk of ischemic stroke, with recent investigations also associating MPO with the onset of heart failure, a crucial contributing factor to the development of ischemic stroke (10). Liao et al. investigated the levels of hepatocyte growth factor (HGF) and MPO in patients with OSA and found that higher levels of both were correlated with disease severity. Surgical interventions and continuous positive airway pressure (CPAP) treatment were shown to reduce cardiovascular damage, and the combined detection of HGF and MPO provided valuable insights into disease progression and treatment efficacy (11). Ferhat et al. discovered elevated levels of MPO activity and sTNF-R1 in the plasma of OSA patients. They also found a weak but significant correlation between MPO activity and disease severity measured by the Apnea-Hypopnea Index (AHI). These discoveries imply that the augmented oxidative stress and systemic inflammation detected in patients with OSA may play a role in elevating the risk of developing cardiovascular diseases (12). However, differing opinions suggest that it might not be OSA but smoking that is substantially correlated with elevated levels of MPO and MMP-9 in patients, emphasizing the need to consider smoking status when evaluating the effects of OSA. The working mechanism might be that the intermittent hypoxia caused by OSA may only lead to cellular membrane damage without oxidative damage at the cytoplasmic and tissue levels (13). MPO levels are significantly associated with smoking, which activates neutrophils and increases MPO release. This enzyme, active in inflammation and oxidative stress, catalyzes reactive oxygen species formation, exacerbating these conditions. Therefore, smokers often have higher MPO levels (14). Therefore, the causal relationship between MPO and OSA remains a subject of ongoing debate and discussion within the scientific community.

Mendelian Randomization (MR) stands as a robust analytical tool, leveraging genetic variants as instrumental variables (IVs) to deduce causal associations between pertinent variables (15, 16). By leveraging the random assortment of genetic variations during conception, MR can help minimize biases related to confounding factors and reverse causation, commonly encountered in observational studies (17). Furthermore, according to Mendel's second law, DNA sequences remain stable, and the transmission of biological information follows a unidirectional flow. As a result, MR can effectively minimize the potential for reverse causation and mitigate any confusion that may arise from it (18). Given the MR method's capacity to reduce confounding bias, our study utilized a two-sample Mendelian randomization (MR) analysis to elucidate the causal relationship between MPO and OSA.

Materials and methods

Study design

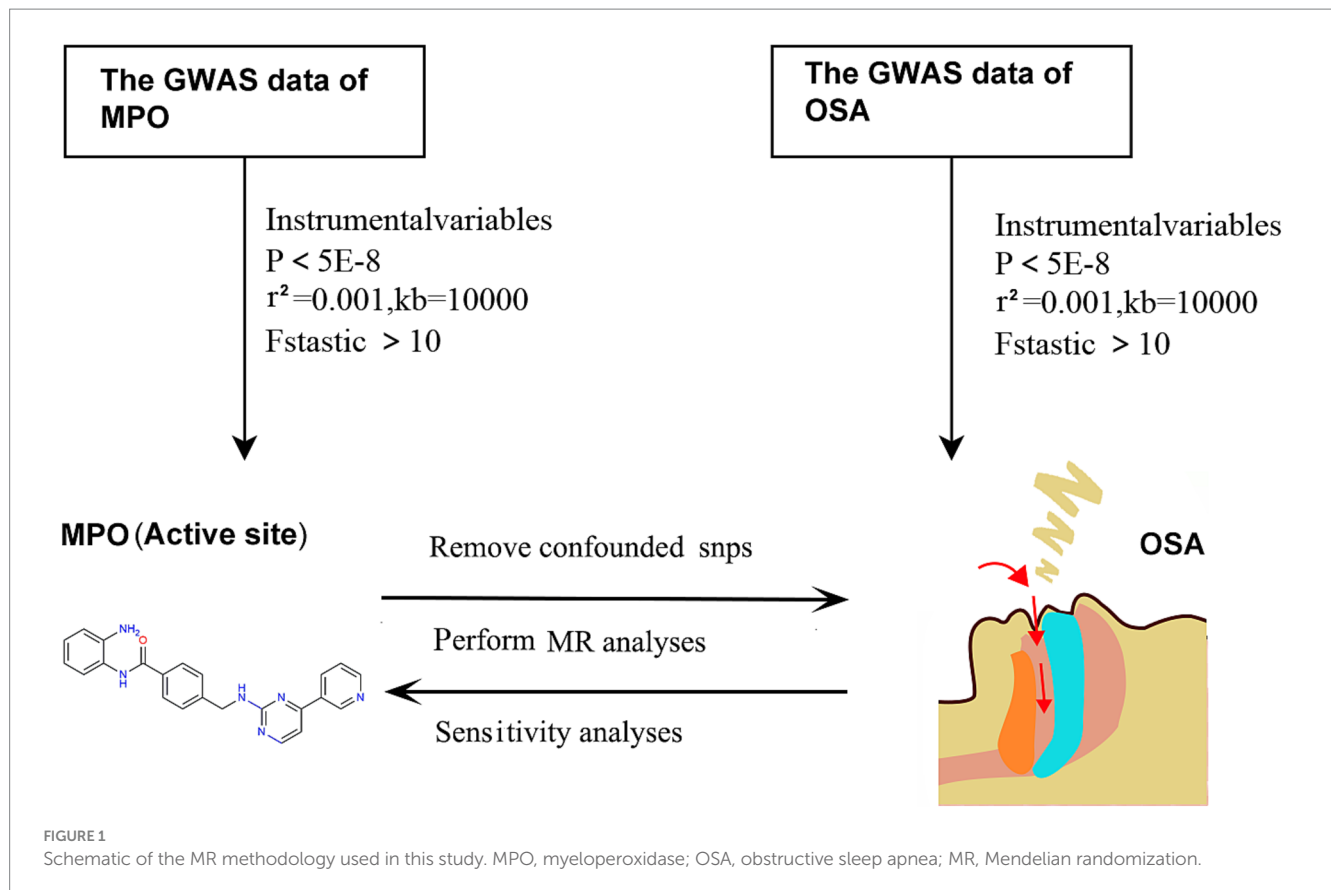
Given that the data utilized in this study were sourced from publicly available online repositories, there was no requirement for ethical approval or informed consent. The flowchart depicting the MR methodology for this study is presented in Figure 1. To meet the prerequisites for MR analysis, the instrumental variables (IVs) selected should fulfill the following criteria: (1) The genetic markers should have a direct effect on the desired exposures. (2) There should be no association between the genetic markers and potential confounders. (3) The genetic markers should impact the outcomes solely through their influence on the exposures (19, 20). The analyses were conducted utilizing the "TwoSampleMR" package (version 0.5.6) and the "MRPRESSO" package (version 1.0) in R (version 4.2.1). To address the limitations associated with MR analysis, we exerted rigorous efforts to identify suitable genetic instruments and managed pleiotropic effects, accounted for reverse causality, and minimized the impact of confounding variables to ensure the robustness and reliability of our findings.

Genetic instruments used to measure plasma MPO levels.

The data on MPO were obtained from a study examining protein quantitative trait loci (pQTLs) associated with 90 cardiovascular proteins in a large cohort of over 30,000 individuals of European descent. This study identified a total of 451 pQTLs for 85 proteins. To validate the findings, pathway mapping, mouse knockdown studies, and clinical evaluations were undertaken. The study also evaluated known drug targets and utilized Mendelian randomization to propose new candidate targets for repositioning. Subsequently, 11 proteins revealed causal connections to human disorders that were previously unexplored. These findings highlight the significance of extensive proteome genetic mapping in precision studies focusing on circulating proteins and their impact on human health (21).

Data sources of OSA

The IVs for OSA were derived from the FinnGen database, which can be publicly accessed at <https://storage.googleapis.com/finngen-public-data-r9/>. This extensive dataset consists of information from 38,998 individuals diagnosed with OSA and 336,659 control subjects.



It is worth noting that the data in the FinnGen database predominantly represent individuals of European descent (22).

Selection of IVs

The selection of appropriate IVs involves meeting several criteria. Firstly, single nucleotide polymorphisms (SNPs) should exhibit a significant association with the target exposure at a genome-wide significance threshold ($p < 5E-08$) (23). Secondly, the SNPs should be assessed for linkage disequilibrium using the PLINK algorithm to ensure a low level of correlation ($r^2 < 0.001$) within a clumping window size of 10,000 kb (24). In the third step, the PhenoScanner GWAS database¹ is consulted to manually exclude any IVs associated with outcome traits (25). Lastly, SNPs possessing an F statistic under 10 are deemed as weak instruments and are thus omitted from subsequent analysis (26).

Statistical analysis

This study utilized several analytical techniques, including inverse variance weighted (IVW), MR-Egger, weighted median, and weighted mode, to examine the causal association between MPO and OSA. The IVW method was chosen as the primary analytical approach,

assuming that each SNP serves as a valid instrumental variable (IV). The IVW method was preferred due to its favorable statistical performance compared to other MR methodologies (27).

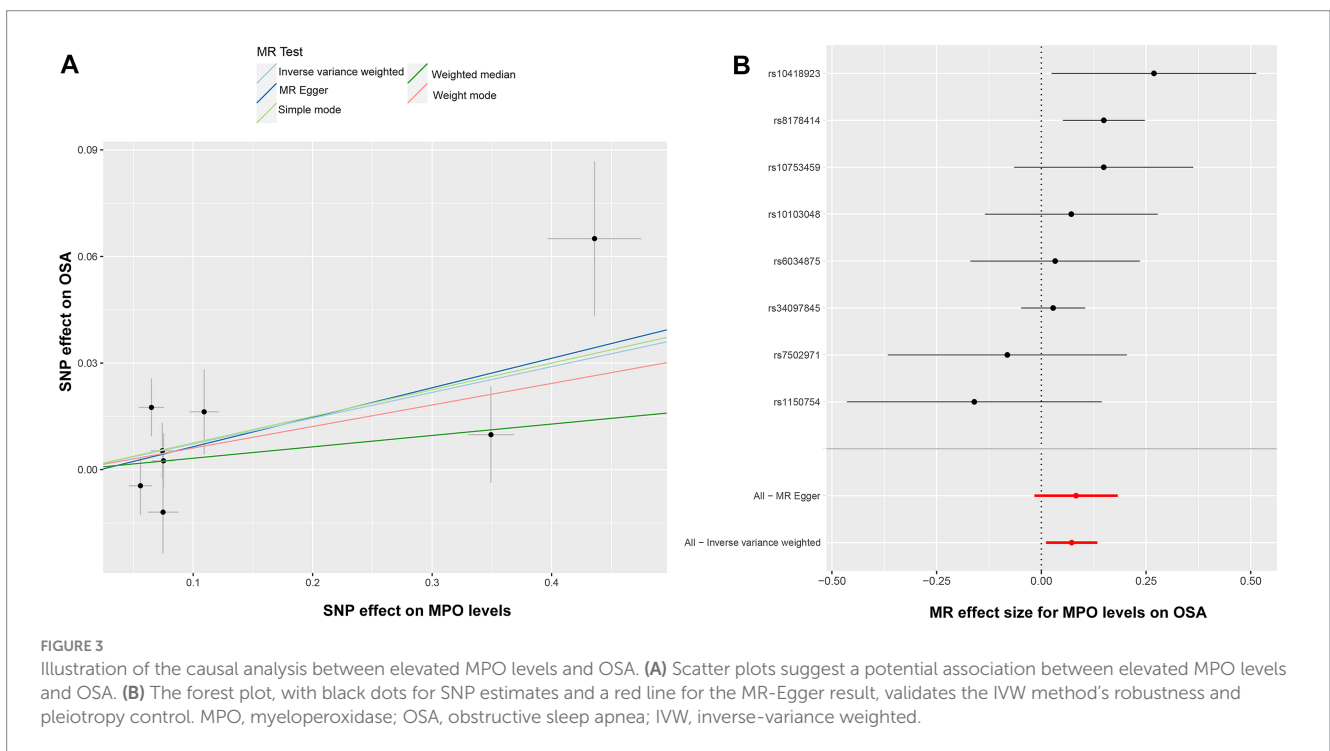
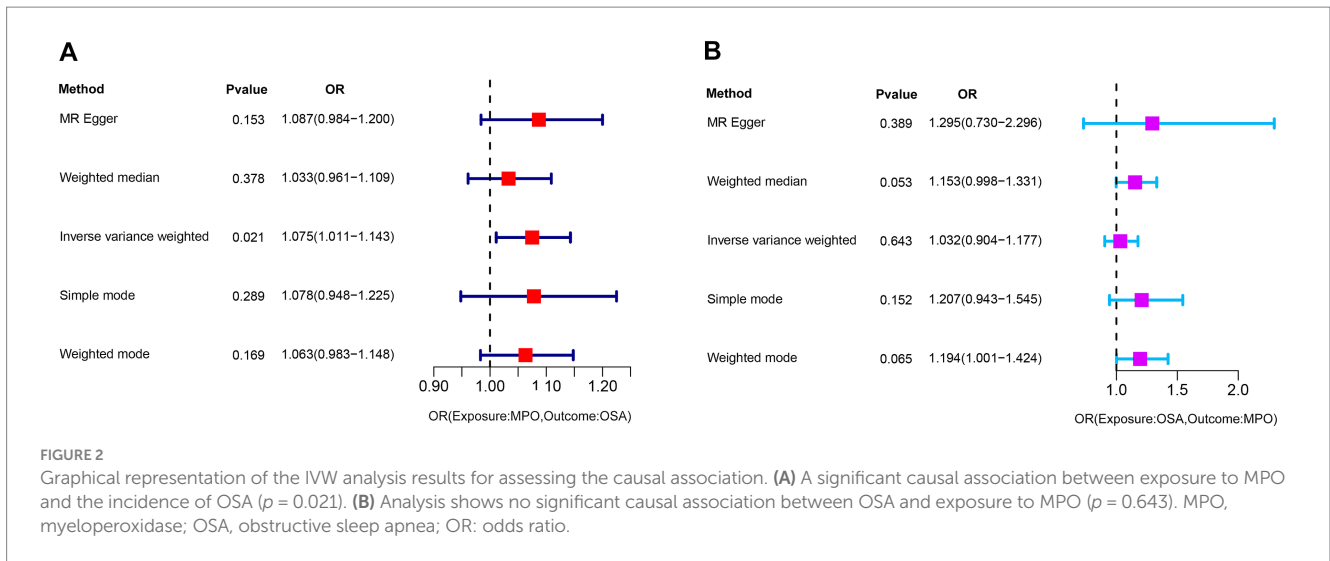
Results

The Impact of Myeloperoxidase on Obstructive Sleep Apnea.

In our study, we examined the impact of MPO on OSA and identified specific SNPs across the genome that demonstrated a significant association with MPO. We carefully assessed the presence of linkage disequilibrium among these SNPs. After excluding palindromic SNPs and those related to smoking and obesity, we identified 9 SNPs that served as IVs for our analysis (Supplementary Table S1). One SNP, rs757081, was excluded due to pleiotropy. The F-statistic for each IV exceeded 10, indicating strong validity for all selected instrumental variables. The primary analysis using the IVW approach suggested a significant causal association between exposure to MPO and the incidence of OSA (OR: 1.075, 95% CI: 1.011–1.143, $p = 0.021$) (Figure 2A). However, the analyses conducted using MR-Egger, weighted median, simple mode, and weighted mode did not yield considerable evidence to back a notable causal link between exposure to MPO and OSA.

Nevertheless, it is noteworthy that the OR values from these methods consistently indicated that elevated MPO levels might potentially contribute to the development of OSA. In the context of Mendelian randomization analysis, compared to the weighted median, weighted mode, simple mode, and MR-Egger approaches, the IVW method usually delivers more stable and trustworthy evaluations of

¹ <http://phenoscanner.medschl.cam.ac.uk>

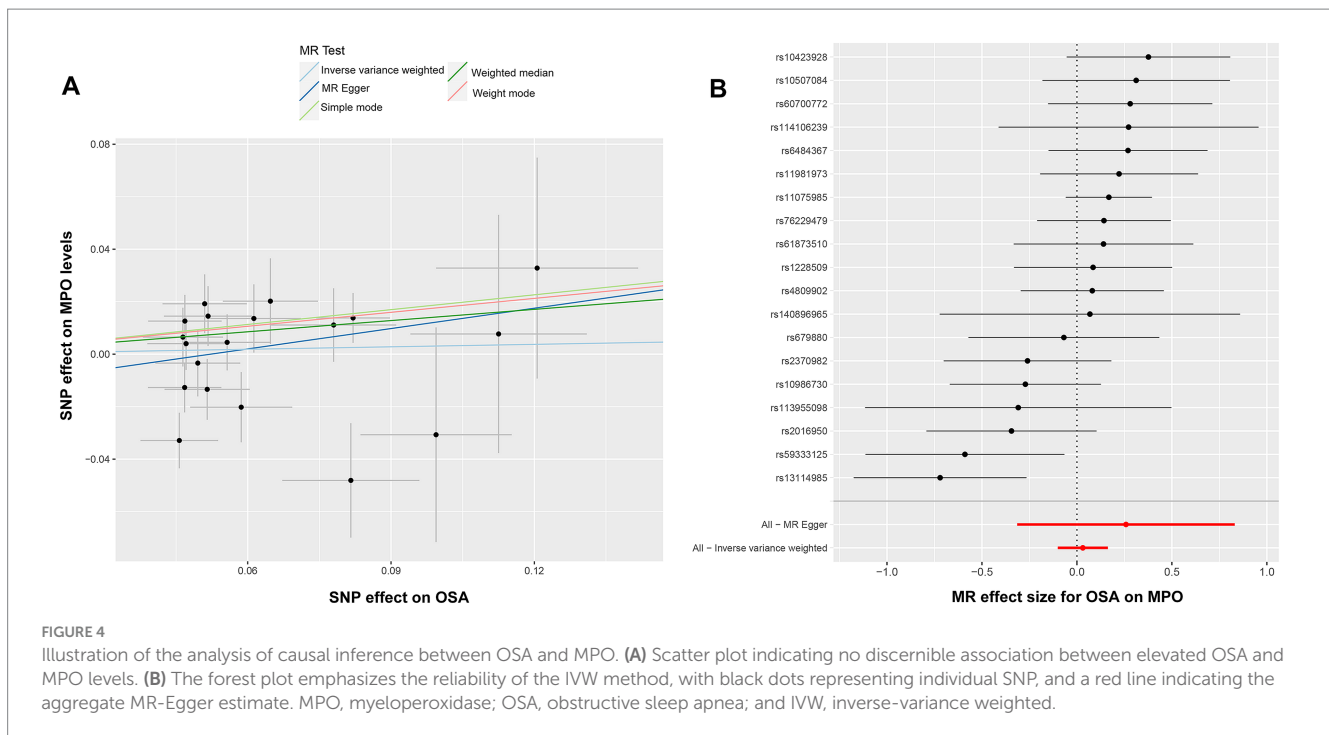


causal connections owing to its elevated statistical potency and improved bias mitigation (28). Heterogeneity was detected using Cochran's Q test ($Q=10.004, p=0.124$). The MR-Egger intercept analysis revealed no evidence of pleiotropy ($p=0.439$). The corresponding scatter plot and forest plot illustrating these findings can be found in Figures 3A,B. The Leave-one-out analysis is a rigorous method used to evaluate the performance of a model. It systematically validates the model by iteratively excluding individual data points and assessing its accuracy using the remaining data (29). Supplementary Figure S1A provides insight into the model's performance during each round of leave-one-out cross-validation. This plot indicates the reliability and robustness of the analysis results

for the association between MPO and OSA. The funnel plot in Supplementary Figure S1B suggests that there is no evidence of bias or heterogeneity, indicating the reliability of the results and the relationship between MPO and OSA.

The Impact of Obstructive Sleep Apnea on Myeloperoxidase.

To investigate the potential impact of OSA on MPO, a reverse Mendelian randomization analysis was conducted. SNPs with strong associations to OSA were chosen, and post adjustment for potential confounders like smoking and obesity, 20 SNPs were discerned as instrumental variables for the examination (Supplementary Table S2). However, due to the presence of pleiotropy, rs13333522 was excluded from the set of IVs. The IVW analysis did not indicate a significant



causal association between OSA and MPO exposure (OR: 1.032, 95% CI: 0.904–1.177, $p=0.643$) (Figure 2B). The MR-Egger results showed a more significant odds ratio (OR: 1.295, 95% CI: 0.730–2.296, $p=0.389$), suggesting a potential directional association. Similarly, the weighted mode and weighted median analyses presented odds ratios above 1, indicating a possible positive association between OSA and MPO levels. Significant heterogeneity was detected based on Cochran's Q test ($Q=31.767$, $p=0.161$), while the MR-Egger intercept analysis indicated no evidence of pleiotropy ($p=0.435$). These findings are illustrated in the corresponding scatter and forest plots (Figures 4A,B). The leave-one-out plot demonstrated a positive correlation, suggesting that there is a potential association between increased levels of OSA and elevated MPO levels (Supplementary Figure S2A). Additionally, the funnel plot did not indicate any significant bias or heterogeneity in the relationship between OSA and MPO (Supplementary Figure S2B).

Discussion

To our understanding, this study is the first to employ Mendelian randomization (MR) analysis in investigating the causal connection between MPO levels and OSA in individuals of European descent. The findings indicate that increased MPO concentrations are correlated with a raised likelihood of developing OSA. However, it's essential to clarify that experiencing OSA does not definitively correspond to elevated levels of MPO. These revelations highlight the potential involvement of MPO in the evolution of OSA and accentuate the necessity for continued exploration in this field.

There are several inflammatory markers associated with OSA, including C-reactive protein (CRP). A meta-analysis of five studies, involving 219 OSA participants and 116 controls, found that the OSA group had significantly higher levels of high-sensitivity CRP compared to the control group. CRP is known to be associated with systemic

inflammatory responses. The objective of our study is to identify a biomarker that correlates with both cardiac diseases and OSA (30). Meltem et al. examined the clinical relevance of MPO in both serum and saliva, along with serum levels of CRP, as indicators of inflammation in OSA. The research showed a significant elevation in salivary MPO and serum CRP levels in subjects with OSA in comparison to those in the control group. The findings support the idea of persistent local inflammation in OSA patients, highlighting the potential value of salivary MPO levels as indicators of oropharyngeal inflammation in OSA (31). In clinical scenarios, OSA is closely associated with cardiovascular diseases, and Continuous CPAP therapy is a primary treatment approach. In a study involving 153 participants with OSA, 76 individuals were randomly assigned to receive CPAP treatment, while the remaining 77 were assigned to a control group receiving sham CPAP. Both groups underwent the respective interventions for a duration of 2 months. Following the treatment period, the results revealed no significant changes in oxidative stress markers, including MPO and F2-Isoprostanes (32). Activated polymorphonuclear leukocytes play a crucial role in developing and progressing smoking-induced vascular inflammation and atherosclerosis. This sequence triggers the liberation of MPO, influencing the decrease in bioavailability of endothelial nitric oxide, inciting the oxidation of both low and high-density lipoproteins (LDL and HDL), and advancing the development and instability of atherosclerotic plaques (33, 34).

The potential association between smoking and OSA remains uncertain, presenting conflicting findings across various studies. Smoking correlates with insomnia, manifesting in increased awakenings, extended N1 and N2 sleep stages durations, and a decrease in deep sleep phases. Individuals suffering from undiagnosed or untreated OSA may resort to smoking to leverage the stimulating effects of nicotine, especially those exhibiting symptoms of depression (35). The definitive connection between MPO and OSA is yet to

be elucidated due to the interference of confounding elements like smoking and BMI, and the diverse severity levels of AHI. These elements add layers of complexity in deciphering the true connection between MPO and OSA. MR analysis is adept at sidestepping the inherent confounders and biases of reverse causation present in observational studies (36). Additionally, it can overcome the high cost and limited practicability of randomized controlled trials. Consequently, MR analysis is a potent tool capable of furnishing robust evidence illustrating a causal association between MPO and OSA.

MPO, a peroxidase enzyme laden with heme, is chiefly located in neutrophils and to a lesser extent in monocytes. It represents a pivotal enzyme expelled from the secondary granules following the activation of neutrophils (37, 38). While the oxidants generated by MPO are beneficial in immune responses against invading pathogens, substantial evidence suggests that inappropriate oxidant generation stimulation may lead to host tissue damage (39). In individuals with OSA, heightened levels of oxidative stress and diminished antioxidant activity have been observed compared to those without OSA (40). Ahmet et al. included a total of 70 participants in their study: 50 with OSA (comprising 11 mild cases making up 6.9%, 17 moderate cases accounting for 24.7%, and 22 severe cases representing 68.5%) and 20 individuals exhibiting simple snoring as the control group. The outcomes revealed no significant disparities in MPO across all groups (41). This indicates that the AHI index we use for categorizing OSA does not maintain a close correlation with MPO either. The mentioned studies align with our research findings, implying a potential association between MPO and OSA. However, it is essential to note that not all individuals with OSA will necessarily have elevated levels of MPO.

In our MR study, the genetic data for exposure and outcome were sourced from populations of European descent. This approach helps to minimize biases arising from racial differences and reduces the potential for sample overlap. The GWAS datasets used in our analysis involved large case-control samples, including 30,931 participants for MPO and 375,657 participants for OSA. With many participants, our MR analysis is well-powered to detect genetic effects on outcome risks. To ensure robust results, we employed a stringent SNP selection threshold of $p < 5E-08$. This approach facilitated the identification of SNPs with more potent genetic effects to be used as IVs. Moreover, setting such a threshold helps to mitigate errors associated with multiple comparisons, reducing the likelihood of false-positive results (42). The F-statistic above ten and $p < 0.05$ for the MR-Egger intercept suggest no evidence of pleiotropy caused by IVs. In contrast, a $p > 0.05$ for the Cochran Q test indicates the absence of heterogeneity. However, it is crucial to recognize some constraints in this study. Initially, the insights are drawn from data focused on individuals of European origin, necessitating more extensive exploration to ascertain if the outcomes are applicable to diverse ethnic communities. Furthermore, given the gradations of OSA (mild, moderate, and severe) based on its intensity, more investigations are imperative to understand whether the recurrent intermittent hypoxia characteristic of severe OSA can escalate MPO levels.

The relationship between MPO and OSA remains not fully understood. Our MR analysis suggests a significant role of MPO in OSA development. Monitoring elevated MPO levels during check-ups or hospitalizations can aid in identifying individuals at

OSA risk, as confirmed through sleep studies. For severe OSA patients, assessing and reducing elevated MPO levels is crucial. However, it's important to recognize the limitations of this study, including potential confounding variables and the challenges posed by using tertiary databases, which may introduce biases or errors. Our exploration of the association between OSA and MPO levels lies in its potential challenge to adequately address reverse causality and unmeasured confounders. This reality underscores the importance of interpreting our findings with caution and highlights the necessity of using varied methodologies in future research to enhance our understanding of the potential causes and progression of OSA.

Conclusion

Our bidirectional two-sample MR study elucidates the causal relationship between MPO levels and the incidence of OSA. By utilizing instrumental variables derived from large datasets, our findings provide robust evidence for an increased risk of OSA associated with elevated MPO levels. The odds ratio indicates that individuals with higher MPO levels are more likely to develop OSA. However, we did not find evidence supporting the reciprocal association, suggesting that OSA does not inherently lead to elevated MPO levels.

Data availability statement

The original contributions presented in the study are included in the article/[Supplementary material](#), further inquiries can be directed to the corresponding authors.

Ethics statement

Ethical review and approval was not required for the study on human participants in accordance with the local legislation and institutional requirements. Written informed consent from the patients/participants or patients/participants' legal guardian/next of kin was not required to participate in this study in accordance with the national legislation and the institutional requirements.

Author contributions

WT: Data curation, Investigation, Software, Writing – original draft. FL: Methodology, Software, Writing – original draft. RH: Funding acquisition, Project administration, Writing – review & editing. PL: Conceptualization, Formal analysis, Methodology, Validation, Writing – review & editing.

Funding

The author(s) declare financial support was received for the research, authorship, and/or publication of this article. This work was

supported by grants from the Natural Science Foundation of Hubei Province, China (No. 2023AFD073).

Conflict of interest

The authors declare that the research was conducted in the absence of any commercial or financial relationships that could be construed as a potential conflict of interest.

Publisher's note

All claims expressed in this article are solely those of the authors and do not necessarily represent those of their affiliated organizations, or those of the publisher, the editors and the reviewers. Any product that may be evaluated in this article, or claim that may be made by its manufacturer, is not guaranteed or endorsed by the publisher.

References

- Senaratna CV, Perret JL, Lodge CJ, Lowe AJ, Campbell BE, Matheson MC, et al. Prevalence of obstructive sleep apnea in the general population: a systematic review. *Sleep Med Rev.* (2017) 34:70–81. doi: 10.1016/j.smrv.2016.07.002
- Arnardottir ES, Bjornsdottir E, Olafsdottir KA, Benediksdottir B, Gislason T. Obstructive sleep apnoea in the general population: highly prevalent but minimal symptoms. *Eur Respir J.* (2016) 47:194–202. doi: 10.1183/13993003.01148-2015
- Mirrahimov AE, Sooronbaev T, Mirrahimov EM. Prevalence of obstructive sleep apnea in Asian adults: a systematic review of the literature. *BMC Pulm Med.* (2013) 13:10. doi: 10.1186/1471-2466-13-10
- Esen AD, Akpınar M. Relevance of obstructive sleep apnea and smoking: obstructive sleep apnea and smoking. *Fam Pract.* (2021) 38:180–5. doi: 10.1093/fampra/maa112
- Krishnan V, Dixon-Williams S, Thornton JD. Where there is smoke...there is sleep apnea: exploring the relationship between smoking and sleep apnea. *Chest.* (2014) 146:1673–80. doi: 10.1378/chest.14-0772
- Cielo CM, Tapia IE. Diving deeper: rethinking AHI as the primary measure of OSA severity. *J Clin Sleep Med.* (2019) 15:1075–6. doi: 10.5664/jcsm.7856
- Heinzer R, Vat S, Marques-Vidal P, Marti-Soler H, Andries D, Tobback N, et al. Prevalence of sleep-disordered breathing in the general population: the HypnoLaus study. *Lancet Respir Med.* (2015) 3:310–8. doi: 10.1016/s2213-2600(15)00043-0
- Breckwoldt MO, Chen JW, Stangenberg L, Aikawa E, Rodriguez E, Qiu S, et al. Tracking the inflammatory response in stroke in vivo by sensing the enzyme myeloperoxidase. *Proc Natl Acad Sci U S A.* (2008) 105:18584–9. doi: 10.1073/pnas.0803945105
- Tian R, Jin Z, Zhou L, Zeng XP, Lu N. Quercetin attenuated myeloperoxidase-dependent HOCl generation and endothelial dysfunction in diabetic vasculature. *J Agric Food Chem.* (2021) 69:404–13. doi: 10.1021/acs.jafc.0c06335
- Holzworth E, Kornej J, Erbs S, Obradovic D, Bollmann A, Hindricks G, et al. Myeloperoxidase in atrial fibrillation: association with progression, origin and influence of renin-angiotensin system antagonists. *Clin Res Cardiol.* (2020) 109:324–30. doi: 10.1007/s00392-019-01512-z
- Liao LB, Zhai JM, Chen GG, Ma ZE, Yang XB, Zhang JG. Expression and significance of serum hepatocyte growth factor and myeloperoxidase in patients with obstructive sleep apnea hypopnea syndrome. *Lin Chung Er Bi Yan Hou Tou Jing Wai Ke Za Zhi.* (2017) 31:854–8. doi: 10.13201/j.issn.1001-1781.2017.11.009
- Hanikoglu F, Huseyinoglu N, Ozben S, Cort A, Ozdem S, Ozben T. Increased plasma soluble tumor necrosis factor receptor-1 and myeloperoxidase activity in patients with obstructive sleep apnea syndrome. *Int J Neurosci.* (2015) 125:655–62. doi: 10.3109/00207454.2014.960521
- Özkan E, Celik Y, Yucel-Lindberg T, Peker Y. Current smoking determines the levels of circulating MPO and MMP-9 in adults with coronary artery disease and obstructive sleep apnea. *J Clin Med.* (2023) 12:12. doi: 10.3390/jcm121214053
- Ozçaka O, Biçakçı N, Pussinen P, Sorsa T, Köse T, Buduneli N. Smoking and matrix metalloproteinases, neutrophil elastase and myeloperoxidase in chronic periodontitis. *Oral Dis.* (2011) 17:68–76. doi: 10.1111/j.1601-0825.2010.01705.x
- Kraft P, Chen H, Lindström S. The use of genetic correlation and Mendelian randomization studies to increase our understanding of relationships between complex traits. *Curr Epidemiol Rep.* (2020) 7:104–12. doi: 10.1007/s40471-020-00233-6

Supplementary material

The Supplementary material for this article can be found online at: <https://www.frontiersin.org/articles/10.3389/fneur.2023.1305580/full#supplementary-material>

SUPPLEMENTARY FIGURE S1

Depiction of analytical robustness and reliability. (A) The plot shows the model's performance during leave-one-out cross-validation, highlighting the reliability and robustness of the analysis. (B) The funnel plot shows no discernible bias or heterogeneity, affirming the reliable association between MPO and OSA. MPO, myeloperoxidase; OSA, obstructive sleep apnea.

SUPPLEMENTARY FIGURE S2

Illustration of positive correlation and analytical consistency. (A) The leave-one-out plot indicates a positive correlation, showcasing a potential association between elevated levels of OSA and increased MPO levels. (B) The funnel plot revealed no significant bias or heterogeneity, underscoring the consistency in the relationship between OSA and MPO. OSA, obstructive sleep apnea, MPO, myeloperoxidase.

- Xu J, Li M, Gao Y, Liu M, Shi S, Shi J, et al. Using Mendelian randomization as the cornerstone for causal inference in epidemiology. *Environ Sci Pollut Res Int.* (2022) 29:5827–39. doi: 10.1007/s11356-021-15939-3
- Davey Smith G, Hemani G. Mendelian randomization: genetic anchors for causal inference in epidemiological studies. *Hum Mol Genet.* (2014) 23:R89–98. doi: 10.1093/hmg/ddu328
- Swerdlow DI, Kuchenbaecker KB, Shah S, Sofat R, Holmes MV, White J, et al. Selecting instruments for Mendelian randomization in the wake of genome-wide association studies. *Int J Epidemiol.* (2016) 45:1600–16. doi: 10.1093/ije/dyw088
- Shah S, Henry A, Roselli C, Lin H, Sveinbjörnsson G, Fatemifar G, et al. Genome-wide association and Mendelian randomisation analysis provide insights into the pathogenesis of heart failure. *Nat Commun.* (2020) 11:163. doi: 10.1038/s41467-019-13690-5
- Emdin CA, Khera AV, Kathiresan S. Mendelian randomization. *JAMA.* (2017) 318:1925–6. doi: 10.1001/jama.2017.17219
- Folkersen L, Gustafsson S, Wang Q, Hansen DH, Hedman ÅK, Schork A, et al. Genomic and drug target evaluation of 90 cardiovascular proteins in 30,931 individuals. *Nat Metab.* (2020) 2:1135–48. doi: 10.1038/s42255-020-00287-2
- Kurki MI, Karjalainen J, Palta P, Sipilä TP, Kristiansson K, Donner KM, et al. FinnGen provides genetic insights from a well-phenotyped isolated population. *Nat Cell Biol.* (2023) 613:508–18. doi: 10.1038/s41586-022-05473-8
- Zhu Q, Hua L, Chen L, Mu T, Dong D, Xu J, et al. Causal association between obstructive sleep apnea and gastroesophageal reflux disease: a bidirectional two-sample Mendelian randomization study. *Front Genet.* (2023) 14:1111144. doi: 10.3389/fgene.2023.1111144
- Jacobs BM, Noyce AJ, Giovannoni G, Dobson R. BMI and low vitamin D are causal factors for multiple sclerosis: a Mendelian randomization study. *Neural Neuroimmunol Neuroinflamm.* (2020) 7:e662. doi: 10.1212/nxi.0000000000000662
- Staley JR, Blackshaw J, Kamat MA, Ellis S, Surendran P, Sun BB, et al. PhenoScanner: a database of human genotype-phenotype associations. *Bioinformatics.* (2016) 32:3207–9. doi: 10.1093/bioinformatics/btw373
- Pierce BL, Ahsan H, Vanderwee TJ. Power and instrument strength requirements for Mendelian randomization studies using multiple genetic variants. *Int J Epidemiol.* (2011) 40:740–52. doi: 10.1093/ije/dyq151
- Burgess S, Butterworth A, Thompson SG. Mendelian randomization analysis with multiple genetic variants using summarized data. *Genet Epidemiol.* (2013) 37:658–65. doi: 10.1002/gepi.21758
- Mounier N, Kutalik Z. Bias correction for inverse variance weighting Mendelian randomization. *Genet Epidemiol.* (2023) 47:314–31. doi: 10.1002/gepi.22522
- Son N, Cui Y, Xi W. Association between telomere length and skin cancer and aging: a Mendelian randomization analysis. *Front Genet.* (2022) 13:931785. doi: 10.3389/fgene.2022.931785
- Van der Touw T, Andronicos NM, Smart N. Is C-reactive protein elevated in obstructive sleep apnea? A systematic review and meta-analysis. *Biomarkers.* (2019) 24:429–35. doi: 10.1080/1354750x.2019.1600025
- Akpınar ME, Yigit O, Altundag A, Demirel GY, Kocak I. Salivary and serum myeloperoxidase in obstructive sleep apnea. *J Otolaryngol Head Neck Surg.* (2012) 41:215–21.

32. Paz YMHL, Hazen SL, Tracy RP, Strohl KP, Auckley D, Bena J, et al. Effect of continuous positive airway pressure on cardiovascular biomarkers: the sleep apnea stress randomized controlled trial. *Chest*. (2016) 150:80–90. doi: 10.1016/j.chest.2016.03.002
33. Rudolph TK, Rudolph V, Baldus S. Contribution of myeloperoxidase to smoking-dependent vascular inflammation. *Proc Am Thorac Soc*. (2008) 5:820–3. doi: 10.1513/pats.200807-063TH
34. Brevetti G, Schiano V, Laurenzano E, Giugliano G, Petretta M, Scopacasa F, et al. Myeloperoxidase, but not C-reactive protein, predicts cardiovascular risk in peripheral arterial disease. *Eur Heart J*. (2008) 29:224–30. doi: 10.1093/eurheartj/ehm587
35. Pataka A, Kotoulas S, Kalamaras G, Tzinas A, Grigoriou I, Kasnaki N, et al. Does smoking affect OSA? What about smoking cessation? *J Clin Med*. (2022) 11:11. doi: 10.3390/jcm11175164
36. Pagoni P, Dimou NL, Murphy N, Stergiakouli E. Using Mendelian randomisation to assess causality in observational studies. *Evid Based Ment Health*. (2019) 22:67–71. doi: 10.1136/ebmental-2019-300085
37. Klebanoff SJ. Myeloperoxidase: friend and foe. *J Leukoc Biol*. (2005) 77:598–625. doi: 10.1189/jlb.1204697
38. Calverley PM, Anderson JA, Celli B, Ferguson GT, Jenkins C, Jones PW, et al. Salmeterol and fluticasone propionate and survival in chronic obstructive pulmonary disease. *N Engl J Med*. (2007) 356:775–89. doi: 10.1056/NEJMoa063070
39. Hawkins CL, Davies MJ. Role of myeloperoxidase and oxidant formation in the extracellular environment in inflammation-induced tissue damage. *Free Radic Biol Med*. (2021) 172:633–51. doi: 10.1016/j.freeradbiomed.2021.07.007
40. Faure P, Tamisier R, Baguet JP, Favier A, Halimi S, Lévy P, et al. Impairment of serum albumin antioxidant properties in obstructive sleep apnoea syndrome. *Eur Respir J*. (2008) 31:1046–53. doi: 10.1183/09031936.00062707
41. Arisoy A, Ekin S, Sertogullarindan B, Gunbatar H, Sunnetcioglu A, Aksoy N, et al. The relationship among oxidative and anti-oxidative parameters and myeloperoxidase in subjects with obstructive sleep apnea syndrome. *Respir Care*. (2016) 61:200–4. doi: 10.4187/respcare.04277
42. Sanderson E, Glymour MM, Holmes MV, Kang H, Morrison J, Munafò MR, et al. Mendelian randomization. *Nat. Reviews Methods Primers*. (2022) 2:6. doi: 10.1038/s43586-021-00092-5