



OPEN ACCESS

EDITED BY

Valentina Tomassini,
University of Studies G. d'Annunzio Chieti and
Pescara, Italy

REVIEWED BY

Yuichiro Shirota,
The University of Tokyo Hospital, Japan
Mads A. J. Madsen,
Copenhagen University Hospital, Denmark

*CORRESPONDENCE

Iris-Katharina Penner
✉ iris-katharina.penner@insel.ch

†These authors share first authorship

‡These authors share last authorship

RECEIVED 24 July 2023

ACCEPTED 30 October 2023

PUBLISHED 24 November 2023

CITATION

Balloff C, Albrecht P, Stucke A-S, Scala L,
Novello S, Hartmann CJ, Meuth SG,
Schnitzler A, Penner I-K and Groiss SJ (2023)
The importance of pyramidal tract integrity for
cortical plasticity and related functionality in
patients with multiple sclerosis.
Front. Neurol. 14:1266225.
doi: 10.3389/fneur.2023.1266225

COPYRIGHT

© 2023 Balloff, Albrecht, Stucke, Scala, Novello,
Hartmann, Meuth, Schnitzler, Penner and
Groiss. This is an open-access article
distributed under the terms of the [Creative
Commons Attribution License \(CC BY\)](#). The use,
distribution or reproduction in other forums is
permitted, provided the original author(s) and
the copyright owner(s) are credited and that
the original publication in this journal is cited, in
accordance with accepted academic practice.
No use, distribution or reproduction is
permitted which does not comply with these
terms.

The importance of pyramidal tract integrity for cortical plasticity and related functionality in patients with multiple sclerosis

Carolin Balloff^{1,2†}, Philipp Albrecht^{1,2†}, Arved-Sebastian Stucke¹,
Lina Scala¹, Sveva Novello¹, Christian Johannes Hartmann^{1,3},
Sven Günther Meuth¹, Alfons Schnitzler^{1,3},
Iris-Katharina Penner^{1,4*‡} and Stefan Jun Groiss^{1,3,5‡}

¹Department of Neurology, Medical Faculty and University Hospital Düsseldorf, Heinrich Heine University, Düsseldorf, Germany, ²Department of Neurology, Kliniken Maria Hilf GmbH, Mönchengladbach, Germany, ³Institute of Clinical Neuroscience and Medical Psychology, Medical Faculty and University Hospital Düsseldorf, Heinrich Heine University, Düsseldorf, Germany, ⁴Department of Neurology, Inselspital, Bern University Hospital, University of Bern, Bern, Switzerland, ⁵Neurocenter Düsseldorf, Düsseldorf, Germany

Background: Cortical plasticity induced by quadripulse stimulation (QPS) has been shown to correlate with cognitive functions in patients with relapsing-remitting multiple sclerosis (RRMS) and to not be reduced compared to healthy controls (HCs).

Objective: This study aimed to compare the degree of QPS-induced plasticity between different subtypes of multiple sclerosis (MS) and HCs and to investigate the association of the degree of plasticity with motor and cognitive functions. We expected lower levels of plasticity in patients with progressive MS (PMS) but not RRMS compared to HCs. Furthermore, we expected to find positive correlations with cognitive and motor performance in patients with MS.

Methods: QPS-induced plasticity was compared between 34 patients with PMS, 30 patients with RRMS, and 30 HCs using linear mixed-effects models. The degree of QPS-induced cortical plasticity was correlated with various motor and cognitive outcomes.

Results: There were no differences regarding the degree of QPS-induced cortical plasticity between HCs and patients with RRMS ($p = 0.86$) and PMS ($p = 0.18$). However, we only found correlations between the level of induced plasticity and both motor and cognitive functions in patients with intact corticospinal tract integrity. Exploratory analysis revealed significantly reduced QPS-induced plasticity in patients with damage compared to intact corticospinal tract integrity ($p < 0.001$).

Conclusion: Our study supports the notion of pyramidal tract integrity being of more relevance for QPS-induced cortical plasticity in MS and related functional significance than the type of disease.

KEYWORDS

cortical plasticity, motor function, repetitive transcranial magnetic stimulation, quadripulse stimulation, pyramidal tract integrity

1 Introduction

Neuroplasticity represents an important mechanism of the human brain to overcome disease-induced changes and impairment in the communication of neuronal networks. It does not only facilitate learning and memory (1) but also environmental adaptation and thus reflects an indispensable prerequisite for recovery and rebuilding of neuronal connections after brain injury and brain disease (2).

In multiple sclerosis (MS), a decline in motor and cognitive performance is the consequence of increased structural damage, finally leading to a network collapse impeding the brain's capability to reorganize (3). Thus, interventions able to promote brain plasticity to regain and/or preserve functions are of tremendous clinical and scientific interest and need. However, potential therapeutic interventions can only be investigated using reliable biomarkers of plasticity with high functional relevance, one of which may be repetitive transcranial magnetic stimulation (rTMS). Depending on the applied frequency, rTMS can change neural excitability by inducing effects similar to long-term potentiation (LTP) and long-term depression (LTD) (4). Many rTMS protocols exist and a protocol called quadripulse stimulation (QPS) (5) is supposed to promote LTP in healthy subjects with the lowest variability (6–8).

Recently, we were able to show that cortical plasticity can be induced by QPS of the motor cortex in patients with relapsing-remitting MS (RRMS) (9). In this cohort, plasticity induced by our QPS protocol was significantly associated with information processing speed, visuospatial learning and short-term memory, and with clinical disability. Correspondingly, cortical plasticity was higher in subjects with preserved cognitive function than in those presenting cognitive deficits. Compared to healthy controls (HCs), our overall mildly affected group of RRMS patients presented with similar levels of cortical plasticity (9).

Even though these findings indicate that QPS-induced plasticity could reflect global synaptic plasticity beyond the motor cortex, research is actually limited to patients with RRMS, neuropsychological performance, and clinical disability. Thus, to extend our knowledge and understanding in terms of clinical relevance and prognostic value of the QPS method, it is required to study its potential in different disease types and its relevance for motor functions as well.

In the present study, we, therefore, analyzed the correlation between the degree of synaptic plasticity with motor functions of the upper and lower extremities as well as with cognitive outcomes for processing speed and visuospatial short-term memory and learning in different types of MS and matched HCs. Furthermore, we compared the degree of QPS-induced plasticity between HCs and different MS subtypes. Based on the previously described association of cortical plasticity and clinical disability in patients with RRMS (9), we hypothesized QPS-induced plasticity to positively correlate with motor outcomes across all disease types. Based on the results from our first RRMS cohort, we further expected to find positive correlations with cognitive performance in patients with progressive MS (PMS).

To the best of our knowledge, only one study has investigated LTP- or LTD-like plasticity induced by rTMS in patients with

PMS so far (10). Plasticity was shown to be reduced in patients with primary progressive MS (PPMS) compared to stable patients with RRMS and HCs. Patients with PPMS neither showed LTP-like effects following intermittent theta burst stimulation (iTBS) nor LTD-like effects following continuous theta burst stimulation (cTBS) (10). It was argued that these findings may be due to excitotoxicity neuronal damage and loss of a sufficient LTP-like response in patients with PPMS (11).

Even though these findings indicate that reduced or even absent synaptic plasticity may be an important factor driving clinical deterioration in patients with PPMS, the sample size of the PPMS group was too small ($n = 12$) to generalize the findings, and both iTBS and cTBS typically show high rates of non- or even opposite responders as well as high intra- and inter-individual variability (12). Furthermore, no data on the degree of cortical plasticity in patients with secondary progressive MS (SPMS) have been published until now.

Despite limited comparability between different rTMS protocols, both the aforementioned protocols and QPS aim to induce either LTP or LTD. Thus, in line with the previous findings and the fact that patients with PMS typically express more disability than patients with RRMS (13, 14), we expected to find similar results using QPS as in the previous study (10). Specifically, we hypothesized plasticity to be reduced in patients with PMS but not in RRMS compared to HCs.

2 Materials and methods

The design and methods of the study have been described in detail elsewhere (9). In the following paragraphs, we therefore only summarize the most relevant information to understand the design of the study as well as any deviations from our previous publication.

2.1 Subjects

Data were collected between May 2018 and October 2022 at the Department of Neurology at the University Hospital in Düsseldorf, Germany. The inclusion criterion was a diagnosis of definite MS according to the revised McDonald criteria (15). The exclusion criteria were as follows: (1) history of diseases of the central or peripheral nervous system other than MS, (2) history of psychiatric diseases potentially affecting cognition other than remitted depressive episodes, (3) presence of any contraindication for transcranial magnetic stimulation (TMS), (4) history of drug or alcohol abuse, (5) age of <18 years. Based on the same exclusion criteria, age-, sex-, and education-matched HCs were recruited from an internal database of interested HCs as well as friends and family members of faculty members of the University Hospital Düsseldorf. A TMS safety screening questionnaire (16) was carried out, and informed written consent was obtained by all persons before participation. The ethical committee of the medical faculty of the Heinrich Heine University Düsseldorf (study number 2018-16) reviewed and approved the study, which was carried out in accordance with the Declaration of Helsinki.

2.2 Experimental design and data assessment

Details of the experimental design have been described in our previous publication (9). To summarize, a short neuropsychological assessment, including the Rao-adapted version of the Symbol Digit Modalities Test (SDMT) (17, 18), the Brief Visuospatial Memory Test-Revised (BVMT-R) (19), and patient-reported outcome measures of fatigue (Fatigue Scale for Motor and Cognitive Functions) (20), depression, and anxiety (Hospital Anxiety and Depression Scale) (21), was administered. Furthermore, the nine-hole peg test (NHPT) was applied as a functional outcome of manual dexterity, and the timed 25-foot walk test (T25FW) served as a measure of ambulation (22). The Expanded Disability Status Scale (EDSS) was determined by an experienced neurologist as an indicator of overall disability (23).

Change in motor-evoked potential (MEP) amplitudes at the right first dorsal interosseous muscle following 30 min of QPS-5 stimulation (5) served as a measure of LTP-like synaptic plasticity. MEPs were evoked by single-pulse monophasic TMS and were adjusted to be ~ 0.5 mV before the QPS-5 intervention to ensure comparability across subjects. In total, 12 MEPs were averaged for analysis. The same stimulation intensity was used to record MEPs post-QPS intervention for a total of 60 min. An average of 12 MEPs was calculated. However, on average, one MEP per subject was excluded at each time of assessment due to voluntary muscle activity and/or artifacts.

To assess pyramidal tract integrity, MEP latency was measured by single-pulse TMS. Participants were told to maintain a contraction of $\sim 30\%$ of the maximum voluntary activity at the target muscle for 10 consecutive trials, while they were stimulated with an intensity of 140% of their individual active motor threshold. The mean latency of the ten trials was used for analyses (24).

2.3 Statistical analyses

Since there are no published data on QPS-induced plasticity in patients with PMS so far, the number of enrolled subjects was based on the number of eligible patients with PMS and matched patients with RRMS/HCs. The comparison of demographic and clinical characteristics was conducted using IBM SPSS Statistics (version 28). All other analyses were carried out in R studio (version 2022.12.0), and statistical tests were considered significant based on $\alpha < 0.05$.

Clinical and demographic characteristics were compared between groups using the Kruskal–Wallis test for continuous variables because data were non-normally distributed in at least one group per variable. MS-specific continuous characteristics (e.g., EDSS) were compared between patients with RRMS and PMS using the Mann–Whitney *U*-test due to non-normal distribution. Fisher's exact test was used to compare categorical data between groups. Significant omnibus tests were followed by Dunn's test or pairwise Fisher's exact test to identify which specific group(s) differed from the others. We report significant pairwise group differences based on uncorrected and Bonferroni–Holm-corrected *p*'-values (25).

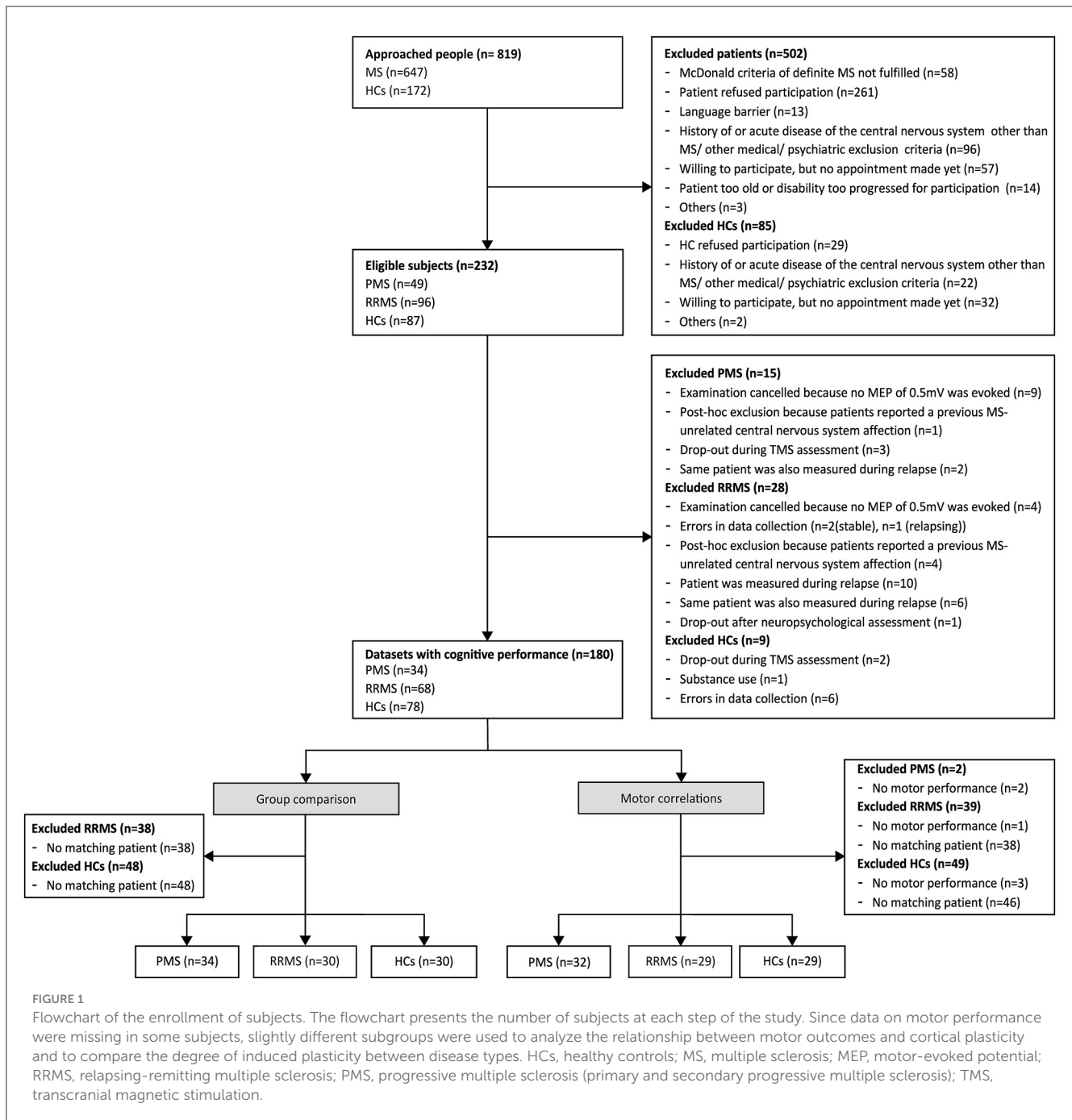
To improve standardization and ensure comparability across our studies, the maximum change in MEP amplitude after QPS was used as our measure of synaptic plasticity.

Due to the presence of outliers, associations between QPS-induced plasticity and functional readouts (BVMT-R, SDMT, NHPT, and T25FW) were investigated by Spearman's rank correlation coefficients of these measures with the difference between the maximum of the six mean post-MEPs and the pre-MEP amplitude (Δ MEP) separately in each group. Uncorrected one-tailed *p*-values and Bonferroni–Holm-corrected *p*'-values are reported (25, 26). Data inspection revealed no clear linear relationship between the NHPT, T25FW, and Δ MEP in either group. Therefore, we did not further analyze linear relationships for these parameters but used generalized additive models (GAMs) to explore more complex linear and non-linear relationships with the “mgcv” package in both patient groups. In addition, we explored the following types of splines: thin plate, penalized cubic, cyclic cubic, shrinkage cubic, and p. Models were compared against the regular linear model using the “anova” function.

Linear mixed-effects models were calculated using the “nlme” package to compare the degree of induced plasticity between HCs, patients with RRMS, and patients with PMS. In line with our previous study (9), the increase of MEP amplitude following QPS was analyzed by comparing the maximum of the six mean post-MEP amplitude against the mean MEP amplitude before QPS (~ 0.5 mV). A random slope for the intervention (pre/post-QPS) was added to the fixed effects of the intervention (pre/post-QPS), group (HCs, RRMS, and PMS), and their interaction. This accounted for both the dependency of pre- and post-MEP amplitudes within subjects due to repeated measurements as well as for the variability of the interventional effect.

The basic model predicting the MEP amplitude included the fixed effects of the intervention (pre/post-QPS) and group (HCs, RRMS, and PMS), as well as their interaction. To account for the subject-dependent variability in response to the intervention, a random slope for the intervention (pre/post-QPS) was included. For our research question, the interactions of *post-QPS*group* were most relevant since significant interactions would indicate a significant difference in the degree of plasticity between the corresponding groups. Specifically, we hypothesized a significantly reduced increase of MEP amplitude in patients with PMS compared to HCs and patients with RRMS. Due to this directed hypothesis, one-tailed confidence intervals and *p*-values were conducted for the factor *post-QPS*PMS*. All other confidence intervals and *p*-values were based on two-tailed analysis.

In line with our previous study (9), age, depression, anxiety, fatigue, and MEP latency, as well as their interactions were separately added to the model. Models including covariates were tested against the basic model described above based on likelihood-ratio tests. Models including covariates with missing data were compared based on the Akaike information criterion. The variance inflation factor (cutoff value of ≥ 5) was used to investigate collinearity. All models were estimated using the “restricted maximum likelihood method” because it results in a more precise estimation of standard errors in smaller samples (27). We only report the model with the best fit.



Lastly, we conducted exploratory analyses. In the first analysis, we divided the PMS group into SPMS and PPMS and repeated linear mixed-effect modeling with four instead of three groups to avoid systematic errors possibly evolving from the merger of both PMS groups. In the second and third analyses, we divided all patients with MS into two groups based on pyramidal tract integrity as measured by cortical latency. MEP latency is a measure of corticospinal conduction velocity and may be prolonged in patients with MS with pyramidal tract affection (28). Based on the clinical norms of the University Hospital Düsseldorf and to avoid misclassifications as “pathological,” MEP latencies of

<24.5 ms were considered normal. Spearman’s rank correlation coefficients of ΔMEP with all functional readouts were calculated for both groups, following the same approach as described above. Uncorrected two-tailed *p*-values and Bonferroni–Holm-corrected (25, 26) *p*’-values are reported. Lastly, we compared the degree of induced plasticity between patients with pathological vs. normal cortical latency using linear mixed-effects models. The model computation followed the same procedures as described above. However, latency was not included as a covariate in the second analysis as patients were divided into two groups based on this variable.

3 Results

3.1 Demographic and clinical characteristics

Out of 819 people approached, a total of 34 patients with PMS (14 PPMS, 20 SPMS), as well as 30 matched patients with RRMS and 30 matched HCs were included (Figure 1). Demographic characteristics of each subgroup are presented in Table 1 and were compared between groups. As expected, patients with PMS were significantly more disabled than patients with RRMS and HCs, indicated by higher EDSS, longer cortical latency, worse performance in SDMT, BVMT-R, NHPT, and T25FW, and higher rates of unemployment. Furthermore, patients with PMS had higher active and resting motor thresholds than HCs and required higher stimulation intensity to evoke an MEP amplitude of ~ 0.5 mV compared to both patients with RRMS and HCs. Patients with RRMS required higher stimulation intensity to evoke an MEP amplitude of ~ 0.5 mV compared to HCs and performed worse on the NHPT as well as T25FW. The distribution of motor and cognitive fatigue was comparable between both patient groups, but, as expected, more patients described clinical levels of fatigue than HCs. Due to missing data in the T25FW and NHPT, 32 patients with PMS, 29 matched patients with RRMS, and 29 HCs were included in further analyses of the relationship between motor performance and cortical plasticity.

3.2 Differences in QPS-induced plasticity between patients with PMS and matched patients with RRMS and HCs

In all study groups, i.e., HCs, patients with RRMS, and patients with PMS, MEP amplitudes significantly increased after the QPS intervention. However, there was no difference in Δ MEP between groups (Table 2, Figures 2A, B). A significant main effect of cortical latency was revealed. Across all groups and both times of MEP measurement, longer latencies were associated with lower MEPs (Table 2).

To ensure that our statistical analyses were not fraught with systematic errors by merging PPMS and SPMS into one group of PMS, additional analyses were conducted separating patients with PPMS from patients with SPMS. The results did not reveal any significant differences in the degree of cortical plasticity (Supplementary Table 1, Supplementary Figure 1).

3.3 Association between functional readouts and QPS-induced plasticity

Concerning motor functions as measured by the T25FW and NHPT, Δ MEP correlated significantly with the time to complete the NHPT in patients with RRMS and HCs but not in patients with PMS. When controlling for multiple testing, significance was lost in HCs. No correlation was found between Δ MEP and the T25FW in either of the three groups. Despite the statistically significant correlation coefficients for the NHPT, data inspection revealed

no clear linear relationship in either group for both measures of motor function (Figures 3A, B). We, therefore, modeled non-linear associations between both motor functions and Δ MEP, which did, however, not improve the model fit in either group.

Concerning cognitive functions, Δ MEP correlated significantly with the SDMT raw score in patients with RRMS and HCs but not in patients with PMS. Controlling for multiple testing, the association did not reach statistical significance in any group. Δ MEP also significantly correlated with the BVMT-R total score in patients with RRMS but missed statistical significance when controlling for multiple testing. No correlation was found for the BVMT-R in patients with PMS and HCs (Figures 3C, D).

Splitting the two patient groups by pyramidal tract integrity as measured by cortical latency, those patients with normal MEP latency showed significant correlations of Δ MEP with the NHPT, SDMT raw score, and the BVMT-R total score but not with the T25FW. The association remained statistically significant after the Bonferroni–Holm correction for the NHPT and SDMT raw score. Patients with pathological MEP latency did not show any correlation between Δ MEP and motor and cognitive readouts (Figures 3E–H).

Linear mixed-effects modeling revealed that QPS-induced plasticity was significantly reduced in patients with pathological compared to patients with normal cortical latency (Figures 2C, D, Table 3).

4 Discussion

This is the first study comparing QPS-induced plasticity of the motor cortex between HCs and different types of MS. Our study has two main findings. First, QPS-induced cortical plasticity did not differ between HCs and matched patients with RRMS and PMS. Second, we revealed intact corticospinal tract integrity as a prerequisite for the correlation between the degree of cortical plasticity and both motor and cognitive functions.

We found relevant associations between QPS-induced cortical plasticity and both motor and cognitive functions in patients with MS. However, this association was limited to cases in which MEP latencies, representing corticospinal conduction velocity (28), were normal. Importantly, exploratory analysis revealed that significantly higher degrees of plasticity were induced in these patients compared to patients with prolonged MEP latency. The relevance of structural integrity of the pyramidal tract for rTMS-induced cortical plasticity and learning abilities has already been shown in neurologically healthy subjects, suggesting rTMS to be valuable in identifying patients at risk of developing dementia (29). This is in line with our current results revealing pyramidal tract integrity as a requirement for the correlation of cortical plasticity and motor and cognitive function. Axonal cortical neurodegeneration with pyramidal tract affection may lead to lower synaptic density or activity and may therefore be relevant for plasticity impairment and functional deterioration in MS.

Importantly, the SDMT was conducted verbally, ensuring that no motor functions, apart from speech, were involved. Inaccuracies in the drawings of the BVMT-R due to motor dysfunctions (e.g., wiggly lines) were not considered in the scoring of the test. Therefore, motor dysfunction is unlikely to be responsible for

TABLE 1 Sample characteristics.

Characteristic	PMS (n = 34)	RRMS (n = 30)	HCs (n = 30)	p-value
Sex, N (%), female	16 (47)	16 (53)	16 (53)	0.90
Handedness, N (%), right ^a	32 (97)	27 (90)	27 (90)	0.55
Age, Md (IQR), years	52.5 (12)	48.5 (9)	53 (15)	0.25
Education, Md (IQR), years	15 (5)	16 (6)	17 (5)	0.21
Employment, N (%), yes	16 (47)	23 (77)	26 (87)	0.002^b
AMT, Md (IQR), % MSO	45.5 (13)	44.5 (12)	39 (5)	0.005^c
RMT, Md (IQR), % MSO	55.5 (15)	51.5 (20)	48 (7)	0.007^d
MEP 0.5 mV, Md (IQR), % MSO	81 (35)	66.5 (32)	58 (12)	<0.001^e
MEP latency, Md (IQR), ms	25.4 (6.4)	23.4 (2.5)	22.8 (2.8)	<0.001^f
ΔPost-Pre MEP amplitude, Md (IQR), mV	0.2 (0.5)	0.5 (0.6)	0.5 (0.7)	0.27
BVMT-R				
Total learning score, Md (IQR)	19 (13)	23.5 (13)	28 (6)	<0.001^g
z-score, Md (IQR)	-1.2 (2.4)	-0.1 (2.5)	0.81 (1.2)	<0.001^h
SDMT				
Correct items, Md (IQR)	42.5 (16)	51.5 (24)	54.5 (20)	<0.001ⁱ
z-score, Md (IQR)	-1.2 (1.5)	-0.1 (1.9)	0.43 (2.0)	<0.001ⁱ
Nine-hole peg test				
Time to complete, Md (IQR), seconds	25.3 (9.9)	22.1 (5.4)	18.9 (2.2)	<0.001^j
25-foot walk test				
Time to complete, Md (IQR), seconds	6.4 (4.2)	4.5 (1.8)	3.5 (1.1)	<0.001^k
HADS, N (%), clinical				
Anxiety	1 (3)	5 (17)	0 (0)	0.03^l
Depression	5 (15)	4 (13)	0 (0)	0.07
FSMC, N (%), mild/moderate/severe				
Motor	1 (3)/5 (15)/25 (74)	5 (17)/4 (13)/15 (50)	5 (17)/1 (3)/2 (7)	<0.001^m
Cognitive	4 (12)/5 (15)/ 16 (47)	3 (10)/7 (23)/ 12 (40)	4 (13)/3 (10)/2 (7)	<0.001^m
MS specific characteristics				
Disease duration, Md (IQR), years	12.2 (16)	13.5 (10)		0.86
EDSS, Md (IQR) ⁿ	5.0 (3.0)	2.0 (2.3)		<0.001
DMT at time of assessment, N (%)				0.35
None	6 (18)	5 (17)		
Natalizumab	4 (12)	7 (23)		
Ocrelizumab	21 (62)	12 (40)		
Fingolimod	1 (3)	1 (3)		
Cladribine	1 (3)	2 (7)		
Alemtuzumab	1 (3)	0 (0)		

(Continued)

TABLE 1 (Continued)

Characteristic	PMS (n = 34)	RRMS (n = 30)	HCS (n = 30)	p-value
Glatiramer acetate	0 (0)	2 (7)		
Dimethyl fumarate	0 (0)	1 (3)		

p-values < 0.05 (two-sided) were considered significant and are in boldface. HCs, healthy controls; PMS, patients with progressive multiple sclerosis; RRMS, patients with relapsing-remitting multiple sclerosis; Md, median; IQR, interquartile range; AMT, active motor threshold; RMT, resting motor threshold; MEP, motor-evoked potential; MEP 0.5 mV, stimulation intensity producing a reliable MEP of ~0.5 mV; MSO, maximal stimulator output; BVMT-R, Brief Visuospatial Memory Test-Revised; SDMT, Symbol Digit Modalities Test; HADS, Hospital Anxiety and Depression Scale; FSMC, Fatigue Scale of Motor and Cognition; EDSS, Expanded Disability Status Scale; DMT, disease-modifying therapy. ^aMissing data: n = 1 (PMS). ^bUncorrected and Bonferroni-Holm-corrected pairwise chi-square tests revealed significant differences between HCs and PMS as well as PMS and RRMS. ^cUncorrected Dunn's pairwise comparisons revealed significant differences between all groups. After the Bonferroni-Holm correction, only the difference between HCs and PMS remained significant. ^dUncorrected and Bonferroni-Holm corrected Dunn's pairwise comparisons revealed a significant difference between HC and PMS. ^eUncorrected and Bonferroni-Holm corrected Dunn's pairwise comparisons revealed significant differences between HCs and PMS as well as PMS and RRMS. Missing data: n = 5 (PMS: n = 2, RRMS: n = 1, HCs: n = 2). ^fUncorrected and Bonferroni-Holm corrected Dunn's pairwise comparisons revealed significant differences between HCs and PMS as well as PMS and RRMS. ^gUncorrected Dunn's pairwise comparisons revealed significant differences between all groups. After the Bonferroni-Holm adjustment, only the difference between HC and PMS remained significant. Calculation of z-scores based on the norms provided in the BVMT-R manual (19). ^hUncorrected and Bonferroni-Holm corrected Dunn's pairwise comparisons revealed significant differences between HCs and PMS, as well as PMS and RRMS. Z-scores were calculated based on German norms (17). ⁱUncorrected and Bonferroni-Holm corrected Dunn's pairwise comparisons revealed significant differences between all groups. Missing data: n = 5 (2 PMS and 3 HCs). ^kUncorrected and Bonferroni-Holm corrected Dunn's pairwise comparisons revealed significant differences between all groups. Patients, who were unable to walk the required distance (n = 8 [4 PMS, 4 RRMS]), were assigned the following time to complete: maximum time to complete (total MS Sample) + 1.645*standard deviation (total MS sample). Missing data: n = 5 (2 PMS, 3 HCs). ^lUncorrected and Bonferroni-Holm corrected pairwise chi-square tests revealed no significant differences between any groups. Classification as "clinical" based on scores ≥ 11 (21). ^mUncorrected and Bonferroni-Holm corrected pairwise chi-square tests revealed significant differences between HCs and PMS as well as HCs and RRMS. Classification (mild, moderate, and severe) based on cutoffs provided in the manual of the FSMC (20). ⁿMissing data: n = 1 (PMS). MS, multiple sclerosis.

TABLE 2 Multivariable linear mixed-effects model of MEP amplitude over time in HCs, patients with RRMS, and patients with PMS.

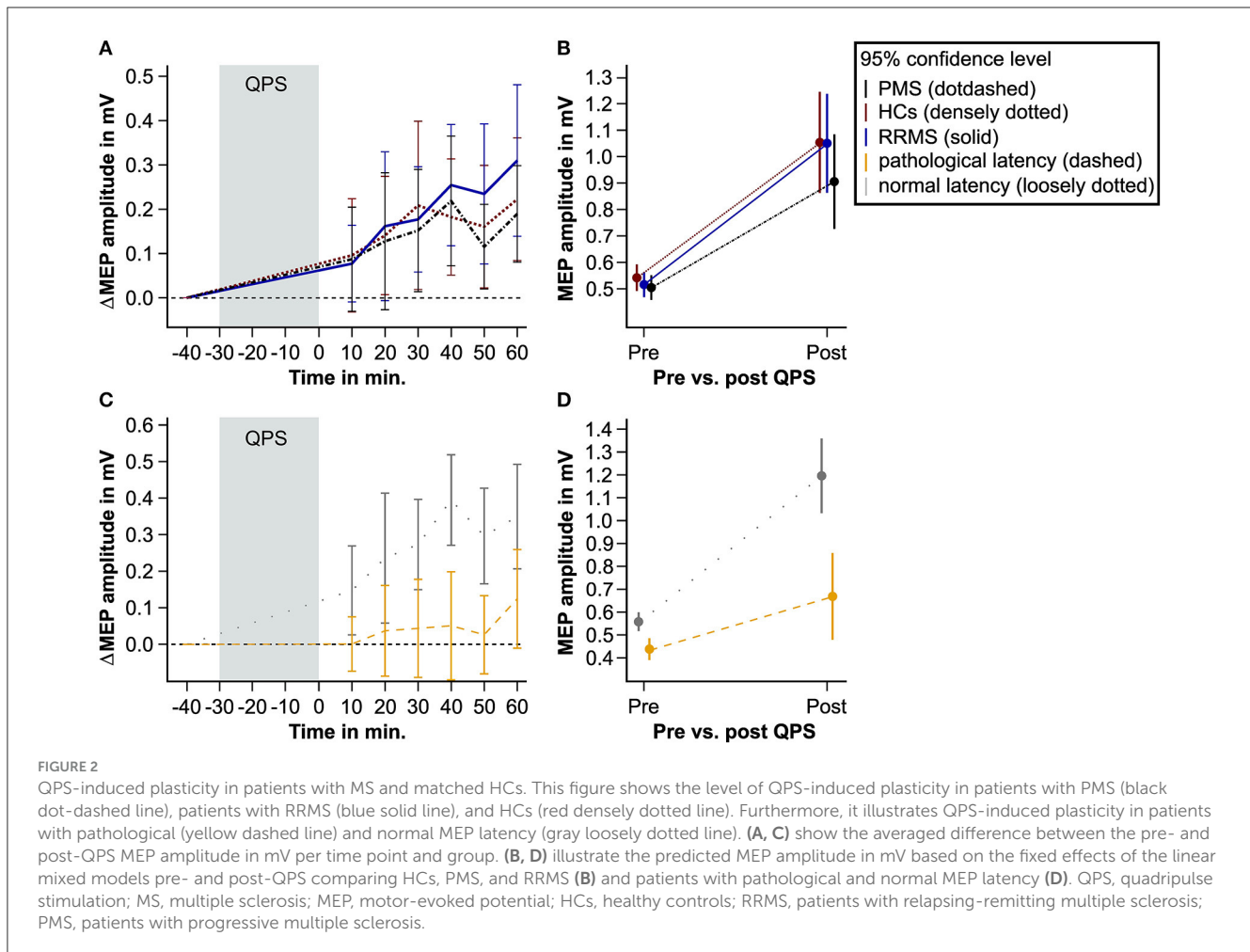
	Fixed effects				Random effects
	β-coefficient (95% CI)	SE _b	t-value	p	SD
Intercept	+0.54(+0.49; +0.59) ^a	0.03	+21.28	<0.0001	
Pre-QPS	Reference				
Post-QPS	+0.51 (+0.33; +0.69) ^a	0.09	+5.73	<0.0001	
HCS	Reference				
RRMS	-0.03 (-0.09; +0.04)	0.03	-0.75	0.45	
PMS	-0.04 (-0.11; +0.04)	0.04	-1.02	0.31	
Age	-0.01 (-0.04; +0.02)	0.01	-0.77	0.45	
Latency	-0.04 (-0.07; -0.01) ^a	0.02	-2.45	0.02	
Post-QPS*RRMS	+0.02 (-0.23; +0.27)	0.18	+0.18	0.86	
Post-QPS*PMS	-0.11 (-∞; +0.09)	0.12	-0.91	0.18	
Age*Latency	+0.03 (-0.00; +0.06)	0.02	+1.92	0.06	
Subject*Pre-QPS					0.10
Subject*Post-QPS					0.51
Residual					0.08

Two-tailed 95% confidence intervals and p-values are displayed for all factors except for the primary variable of interest (post-QPS*PMS). For this factor, testing our hypothesis, that synaptic plasticity is reduced in patients with PMS, one-tailed 95% confidence intervals and p-values are reported. p-values of <0.05 are in boldface. t- and p-values are based on the asymptotic Wald test. Continuous variables (age, latency) centered at sample mean. R²(conditional) = 0.97. R²(marginal) = 0.32. Adjusted intraclass correlation coefficient = 0.95. QPS, quadripulse stimulation; HCs, healthy controls; RRMS, patients with relapsing-remitting multiple sclerosis; PMS, patients with progressive multiple sclerosis. ^aIndicates statistical significance. SE_b, standard error of β-coefficient.

the results. Nonetheless, we have conducted *post hoc* analyses comparing SDMT and BVMT-R results between patients with and without prolonged MEP latency. As expected, no significant differences were revealed between the groups. Thus, we conclude that pyramidal tract integrity could be an important factor to be controlled for in future plasticity studies in MS, e.g., by separately analyzing rTMS-induced plasticity in patients with normal and pathological cortical latency or even introducing pathological MEP latencies as an exclusion criterion.

Interestingly, only one of our motor outcomes, namely, the NHPT but not the T25FW, correlated with the degree of

cortical plasticity. NHPT measures represented motor function from the left hemisphere to the right hand for which QPS-induced cortical plasticity of the left hemisphere corresponded to, while the results of the T25FW could have been influenced by other networks such as the cerebellar system and/or lesions in the spinal cord. In addition to age, performance in the T25FW has recently been associated with normalized deep gray matter volume, whereas the NHPT has been associated with normalized gray matter volume and cognitive performance (30). Thus, NHPT, BVMT-R, and SDMT may require more similar networks than T25FW, BVMT-R, and SDMT. In line with this,



NHPT, BVMT-R, and SDMT were associated with cortical plasticity but not the T25FW.

We did not find cortical plasticity to be reduced in patients with PMS. This result contradicts the assumption that the progressive phase of the disease is characterized by insufficient compensatory reserve to balance out the negative consequences of inflammation and neurodegeneration (31). Furthermore, it is in contrast to an earlier study comparing TMS-induced cortical plasticity using iTBS and cTBS between patients with RRMS and PPMS (10). Patients with RRMS showed preserved plasticity, while it was absent in patients with PPMS after iTBS, which is supposed to induce LTP-like plasticity. Interestingly, cortical plasticity still turned out to be altered in patients with RRMS since cTBS, which originally had been supposed to induce LTD-like plasticity, led to a reversal of plasticity and induced LTP-like effects (10). The authors suggested that platelet-derived growth factor (PDGF) may play a substantial role in LTP induction in patients with MS. Although we did not measure PDGF levels in the cerebrospinal fluid in our study, other reasons may account for the different results between these two studies. In the earlier study, MEP latency, RMT, and AMT were also significantly higher in patients with PPMS, suggesting relevant pyramidal tract affection in this group. Therefore, given the importance of pyramidal tract integrity revealed in the present study, the difference in induced cortical plasticity revealed in

the earlier study (10) may have been driven by pyramidal tract affection rather than the type of MS. Furthermore, higher rates of variability have been described for iTBS and cTBS and verified also in direct comparison to QPS recently (6, 8, 12). Considering the low sample size of patients with PPMS in the previous study ($n = 12$) (10), alterations of induced plasticity in this group may have been an unsystematic result of high variability of previously used protocols rather than a systematic difference between disease types. Moreover, although recent TMS work postulated that loss of inhibition may be particularly important in SPMS (32), it has been shown that excitatory glutamatergic circuits may play a key role in MS pathology (33–35). In contrast to iTBS and cTBS, which influence both excitatory and inhibitory networks, QPS is supposed to selectively modulate excitatory glutamatergic cortical networks (5). Thus, the QPS protocol may induce LTP more efficiently in patients with MS and therefore may have yielded different results than the iTBS and cTBS protocols. Future studies should compare the effects of different rTMS protocols in patients with MS intraindividually to reveal the strengths and limitations of each protocol and thus increase the quality of future investigations of plasticity in MS.

Recruitment of patients with PMS for rTMS research may have some pitfalls, the most difficult being the relatively low prevalence rate compared to RRMS. Moreover, patients with PMS are typically

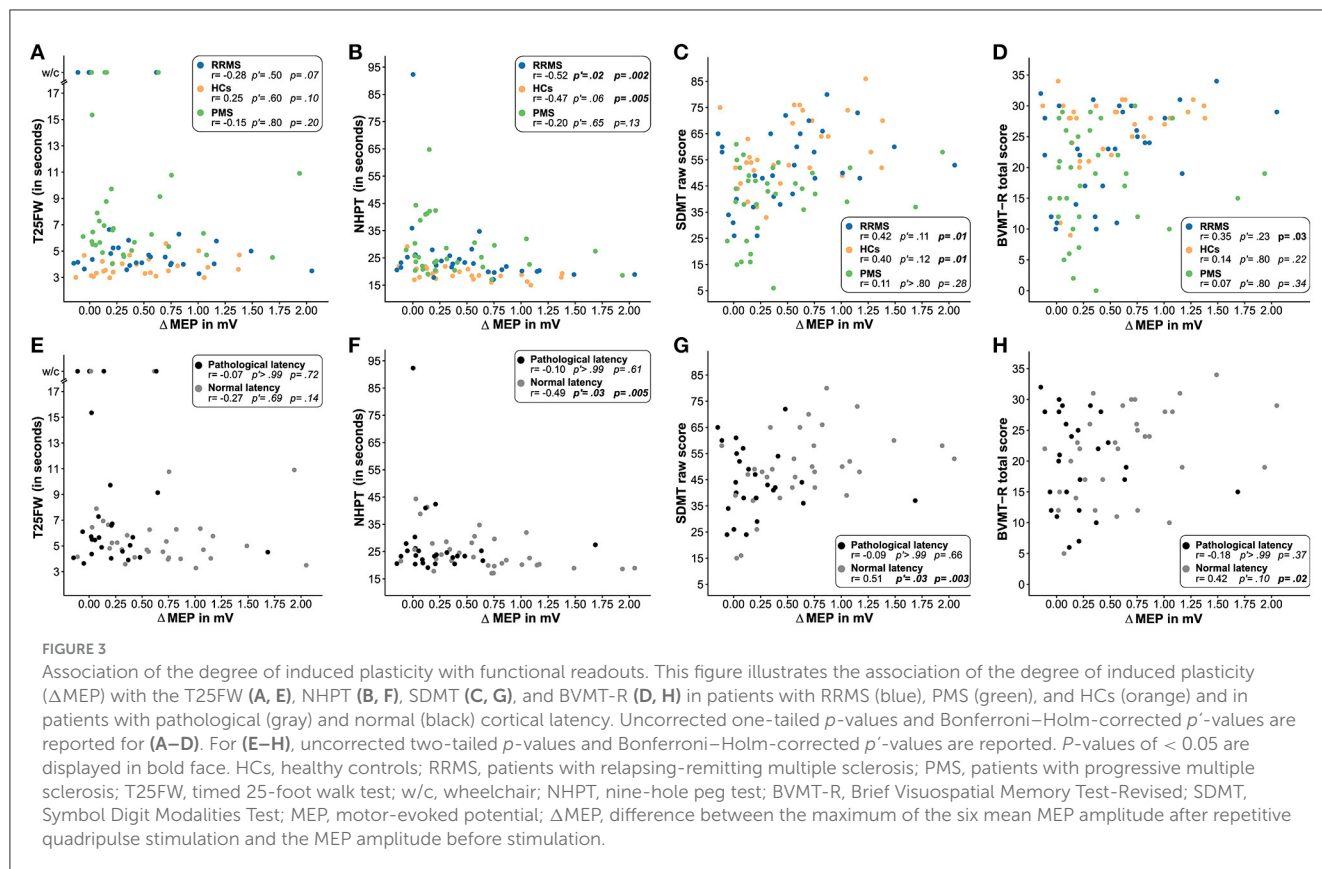


TABLE 3 Multivariable linear mixed-effects model of MEP amplitude over time in patients with normal vs. patients with pathological cortical latency.

	Fixed effects				Random effects
	β -coefficient (95% CI)	SE _{β}	t -value	p	SD
Intercept	+0.56 (+0.52; +0.60) ^a	0.02	+26.82	<0.0001	
Pre-QPS	Reference				
Post-QPS	+0.64 (+0.49; +0.79) ^a	0.08	+8.36	<0.0001	
Normal cortical latency	Reference				
Pathological cortical latency	-0.12 (-0.18; -0.06) ^a	0.03	-3.75	<0.001	
Post-QPS*Pathological cortical latency	-0.41 (-0.64; -0.17) ^a	0.12	-3.49	<0.001	
Subject*Pre-QPS					0.09
Subject*Post-QPS					0.49
Residual					0.08

Two-tailed 95% confidence intervals, and p -values are displayed. p -values of < 0.05 are in boldface. t - and p -values are based on the asymptotic Wald test. R^2 (conditional) = 0.97. R^2 (marginal) = 0.42. Adjusted intraclass correlation coefficient = 0.95. QPS, quadripulse stimulation. ^aIndicates statistical significance. SE _{β} , standard error of β -coefficient.

more severely impaired (13, 14), impeding participation in studies with extensive protocols due to exhaustion or mobility issues. Despite these challenges, we included a sample that was almost three times as big ($n = 34$ vs. $n = 12$) as in the previous study by Mori et al. (10). We decided to summarize patients with PPMS and SPMS to one group of PMS to increase the statistical power since the clinical disease and pathophysiology appear to be

similar (36). However, lower levels of white matter lesions and inflammation have been described for PPMS (31, 36), and it is still an open debate whether this disease subtype represents the same or a distinct disease entity. Therefore, we conducted an exploratory analysis, in which we compared QPS-induced plasticity in patients with PPMS and SPMS separately to matched HCs. However, we did not find any differences across groups, supporting

the legitimacy of our approach to summarize the two progressive disease types.

Our study is not without limitations. Due to the cross-sectional design, no conclusions regarding the clinical relevance for disease progression can be drawn. Furthermore, the lack of imaging data prevents us from analyzing the impact of (sub)cortical lesions. Thus, we cannot rule out that MEP latencies may have not only been prolonged due to damaged pyramidal tracts but also due to abnormalities in the motor cortex. In addition, MEP latency may have been influenced by the participant's height and age. Patients with MS received different disease-modifying therapies and symptomatic medications, which potentially have impacted cortical excitability. Even though no systematic evaluation of the effects of different treatments on cortical excitability exists to the best of our knowledge, stabilizing effects of disease-modifying drugs on cortical excitability over time have been suggested in patients with PMS (37). Due to high variations in the stimulation protocols, target muscles, and study populations, different numbers of averaged trials to achieve reliable MEP assessments have been recommended (38–41). We chose to average 12 MEPs at each time of assessment to maintain a concise protocol and minimize participant fatigue. However, this number of average trials is at the lower end of the recommendations, and we might have improved the reliability of our findings by increasing the number of averaged MEPs. Lastly, baseline MEP amplitude was controlled to be ~ 0.5 mV in all patients. However, this amplitude could have been distributed at varying places on the recruitment curve for the different subjects (42), potentially causing ceiling effects in patients with impaired corticospinal tract integrity (43). Furthermore, QPS may have affected MEP size differentially depending on the stimulation intensity relative to the recruitment curve (5, 44).

Although overall cortical plasticity between RRMS and PMS was comparable on the group level, i.e., the degree of QPS-induced plasticity did not differ between them, it is plausible that there were disparities in the proportion of patients with corticospinal dysfunction and the extent of such dysfunction between groups. This is supported by the fact that PMS patients had longer MEP latencies compared to RRMS patients. In accordance with this, we identified associations between QPS-induced plasticity and behavioral outcomes only among patients with normal MEP latency, primarily those with RRMS, but not among patients with prolonged MEP latency, primarily those with PMS. In patients with prolonged MEP latency, it is conceivable that damage to the corticospinal tract exerted a more pronounced influence on QPS-induced plasticity, potentially overshadowing other associations, such as those between QPS-induced plasticity and behavioral measures. However, due to the exploratory character of this discovery in our study, we can only speculate about its neuropathological underpinnings, which warrant further investigation.

Despite these limitations, our study supports the notion of pyramidal tract integrity being of more relevance for QPS-induced cortical plasticity in MS and related functional significance than the amount of progression.

Data availability statement

The raw data supporting the conclusions of this article will be made available by the authors, without undue reservation.

Ethics statement

The studies involving humans were approved by ethical committee of the medical faculty of the Heinrich Heine University Düsseldorf. The studies were conducted in accordance with the local legislation and institutional requirements. The participants provided their written informed consent to participate in this study.

Author contributions

CB: Conceptualization, Data curation, Formal analysis, Investigation, Methodology, Project administration, Visualization, Writing – original draft. PA: Conceptualization, Funding acquisition, Investigation, Methodology, Writing – original draft. A-SS: Data curation, Formal analysis, Investigation, Writing – review & editing. LS: Investigation, Writing – review & editing. SN: Investigation, Writing – review & editing. CH: Investigation, Writing – review & editing. SM: Resources, Writing – review & editing. AS: Resources, Writing – review & editing. I-KP: Conceptualization, Funding acquisition, Methodology, Writing – original draft. SG: Conceptualization, Funding acquisition, Investigation, Methodology, Writing – original draft.

Funding

The author(s) declare financial support was received for the research, authorship, and/or publication of this article. This study was supported by the research commission of the medical faculty of the Heinrich Heine University Düsseldorf (project No. 2019-14). The funder had no role in the design and conduct of the study, collection, management, analysis, and interpretation of the data, preparation, review, or approval of the manuscript.

Acknowledgments

The authors thank all participants for participating in the study and all colleagues from the Department of Neurology for supporting our research. Furthermore, the authors thank Pia-Sophie Ptaszynski, MSc, Elisa Heinen, BSc, Lisa Kathleen Janßen, BSc, Meng Ma, MD, and Iason Georgiades, MD for their support in data collection. During the preparation of this study, the authors used ChatGPT-(Version 3, OpenAI, 2023) to improve readability and linguistic style. After using this tool/service, the authors reviewed and edited the content as needed and took full responsibility for the content of the publication.

Conflict of interest

PA received compensation for serving on Scientific Advisory Boards for Allergan, Celgene, Janssen Cilag, Ipsen, Merck, Merz Pharmaceuticals, Novartis, and Biogen; he received speaker honoraria and travel support from Novartis, Teva, Biogen, Celgene, Merz Pharmaceuticals, Ipsen, Allergan, Bayer Healthcare, Esai, UCB; Roche; he received research support from Novartis, Allergan, Biogen, Celgene, Teva, Merz Pharmaceuticals, Ipsen, and Roche. CH has been serving as a consultant for Univar and has received honoraria for lecturing and travel expenses/speaking honoraria from Abbott and Alexion, and research support from Abbott. SM has received honoraria for lecturing and travel expenses for attending meetings from Almirall, Amicus Therapeutics Germany, Bayer Health Care, Biogen, Celgene, Diamed, Genzyme, MedDay Pharmaceuticals, Merck Serono, Novartis, Novo Nordisk, ONO Pharma, Roche, SanofiAventis, Chugai Pharma, QuintilesIMS, and Teva, and research funding from the German Ministry for Education and Research (BMBF), the Deutsche Forschungsgemeinschaft, the Else Kröner Fresenius Foundation, the German Academic Exchange Service, the Hertie Foundation, the Interdisciplinary Center for Clinical Studies (IZKF) Muenster, the German Foundation for Neurology, Almirall, Amicus Therapeutics, Germany, Biogen, Diamed, Fresenius Medical Care, Genzyme, Merck Serono, Novartis, ONO Pharma, Roche, and Teva. AS has received lecture fees from Abbott, Novartis, and Kyowa Kirin, and has been serving as a consultant for Abbott, Zambon, and Medtronic Inc. He received royalties from Georg Thieme Verlag. He is a government employee and receives through his institution funding for his research from the German Research Council, Abbott, and the Brunhilde Moll Foundation. I-KP received honoraria for speaking at scientific meetings,

serving at scientific advisory boards, and consulting activities from Almirall, Bayer Pharma, Biogen, BMS, Celgene, Sanofi-Genzyme, Janssen, Merck, Novartis, Roche, and Teva. She received research support from the German MS Society, Celgene, Novartis, Roche, and Teva. SG received honoraria and/or travel expenses from Abbott Medical, Abbvie, Boston Scientific, Medtronic, Rogue Research, and UCB, consulting fees from Zambon, and research support from Abbott and Hilde-Ulrichs Stiftung.

The remaining authors declare that the research was conducted in the absence of any commercial or financial relationships that could be construed as a potential conflict of interest.

The author(s) declared that they were an editorial board member of Frontiers, at the time of submission. This had no impact on the peer review process and the final decision.

Publisher's note

All claims expressed in this article are solely those of the authors and do not necessarily represent those of their affiliated organizations, or those of the publisher, the editors and the reviewers. Any product that may be evaluated in this article, or claim that may be made by its manufacturer, is not guaranteed or endorsed by the publisher.

Supplementary material

The Supplementary Material for this article can be found online at: <https://www.frontiersin.org/articles/10.3389/fneur.2023.1266225/full#supplementary-material>

References

- Martin SJ, Grimwood PD, Morris RG. Synaptic plasticity and memory: an evaluation of the hypothesis. *Annu Rev Neurosci.* (2000) 23:649–711. doi: 10.1146/annurev.neuro.23.1.649
- Gulyaeva NV. Molecular mechanisms of neuroplasticity: an expanding universe. *Biochemistry.* (2017) 82:237–42. doi: 10.1134/S0006297917030014
- Schoonheim MM, Meijer KA, Geurts JJG. Network collapse and cognitive impairment in multiple sclerosis. *Front Neurol.* (2015) 6:82. doi: 10.3389/fneur.2015.00082
- Klömjai W, Katz R, Lackmy-Vallée A. Basic principles of transcranial magnetic stimulation (TMS) and repetitive TMS (rTMS). *Ann Phys Rehabil Med.* (2015) 58:208–13. doi: 10.1016/j.rehab.2015.05.005
- Hamada M, Terao Y, Hanajima R, Shirota Y, Nakatani-Enomoto S, Furubayashi T, et al. Bidirectional long-term motor cortical plasticity and metaplasticity induced by quadripulse transcranial magnetic stimulation. *J Physiol.* (2008) 586:3927–47. doi: 10.1113/jphysiol.2008.152793
- Nakamura K, Groiss SJ, Hamada M, Enomoto H, Kadowaki S, Abe M, et al. Variability in response to quadripulse stimulation of the motor cortex. *Brain Stimul.* (2016) 9:859–66. doi: 10.1016/j.brs.2016.01.008
- Matsumoto H, Ugawa Y. Quadripulse stimulation (QPS). *Exp Brain Res.* (2020) 238:1619–25. doi: 10.1007/s00221-020-05788-w
- Tiksnadi A, Murakami T, Wiratman W, Matsumoto H, Ugawa Y. Direct comparison of efficacy of the motor cortical plasticity induction and the interindividual variability between TBS and QPS. *Brain Stimul.* (2020) 13:1824–33. doi: 10.1016/j.brs.2020.10.014
- Balloff C, Penner I-K, Ma M, Georgiades I, Scala L, Troullinakis N, et al. The degree of cortical plasticity correlates with cognitive performance in patients with Multiple Sclerosis. *Brain Stimul.* (2022) 15:403–13. doi: 10.1016/j.brs.2022.02.007
- Mori F, Rossi S, Piccinin S, Motta C, Mango D, Kusayanagi H, et al. Synaptic plasticity and PDGF signaling defects underlie clinical progression in multiple sclerosis. *J Neurosci.* (2013) 33:19112–9. doi: 10.1523/JNEUROSCI.2536-13.2013
- Weiss S, Mori F, Rossi S, Centonze D. Disability in multiple sclerosis: when synaptic long-term potentiation fails. *Neurosci Biobehav Rev.* (2014) 43:88–99. doi: 10.1016/j.neubiorev.2014.03.023
- Guerra A, López-Alonso V, Cheeran B, Suppa A. Variability in non-invasive brain stimulation studies: reasons and results. *Neurosci Lett.* (2017).
- Engelhard J, Oleske DM, Schmitting S, Wells KE, Talapala S, Barbato LM. Multiple sclerosis by phenotype in Germany. *Mult Scler Relat Disord.* (2022) 57:103326. doi: 10.1016/j.msard.2021.103326
- McGinley MP, Goldschmidt CH, Rae-Grant AD. Diagnosis and treatment of multiple sclerosis: a review. *JAMA.* (2021) 325:765–79. doi: 10.1001/jama.2020.26858
- Thompson AJ, Banwell BL, Barkhof F, Carroll WM, Coetzee T, Comi G, et al. Diagnosis of multiple sclerosis: 2017 revisions of the McDonald criteria. *The Lancet Neurology.* (2018) 17:162–73. doi: 10.1016/S1474-4422(17)30470-2
- Rossi S, Hallett M, Rossini PM, Pascual-Leone A. Screening questionnaire before TMS: an update. *Clinical Neurophysiology.* (2011) 122:1686. doi: 10.1016/j.clinph.2010.12.037
- Smith A. *Symbol Digit Modalities Test (SDMT)*. Los Angeles, CA: Western Psychological Services. (1982).

18. Rao SM. *A Manual for the Brief Repeatable Battery of Neuropsychological Tests in Multiple Sclerosis*. Milwaukee, WI: Medical College of Wisconsin. (1990).
19. Benedict RHB. *Brief Visuospatial Memory Test - Revised: Professional Manual*. Odessa, FL: Psychological Assessment Resources, Inc. (1997).
20. Penner IK, Raselli C, Stöcklin M, Opwis K, Kappos L, Calabrese P. The fatigue scale for motor and cognitive functions (FSMC): validation of a new instrument to assess multiple sclerosis-related fatigue. *Mult Scler*. (2009) 15:1509–17. doi: 10.1177/1352458509348519
21. Herrmann-Lingen C, Buss U, Snaith RP. *Hospital Anxiety and Depression Scale - Deutsche Version (HADS-D)*. Manual Bern: HHuber, Ed. (2011).
22. Fischer JS, Jak AJ, Kniker JE, Rudick RA, Cutter G. *Multiple Sclerosis Functional Composite (MSFC): Administration and Scoring Manual*. National Multiple Sclerosis Society (2001).
23. Kurtzke JF. Rating neurologic impairment in multiple sclerosis: an expanded disability status scale (EDSS). *Neurology*. (1983) 33:1444–52. doi: 10.1212/WNL.33.11.1444
24. Hardmeier M, Jacques F, Albrecht P, Bousleiman H, Schindler C, Leocani L, et al. Multicentre assessment of motor and sensory evoked potentials in multiple sclerosis: reliability and implications for clinical trials. *Mult Scler J Exp Transl Clin*. (2019) 5:2055217319844796. doi: 10.1177/2055217319844796
25. Gaetano J. *Holm-Bonferroni Sequential Correction: An Excel Calculator (1.3) [Computer Software]* (2018). Available online at: https://www.researchgate.net/publication/322568540_Holm-Bonferroni_sequential_correction_An_Excel_calculator_13
26. Hochberg Y. A sharper Bonferroni procedure for multiple tests of significance. *Biometrika*. (1988) 75:800–2. doi: 10.1093/biomet/75.4.800
27. McNeish D, Stapleton LM. Modeling clustered data with very few clusters. *Multivariate Behav Res*. (2016) 51:495–518. doi: 10.1080/00273171.2016.1167008
28. Neva JL, Lakhani B, Brown KE, Wadden KP, Mang CS, Ledwell NHM, et al. Multiple measures of corticospinal excitability are associated with clinical features of multiple sclerosis. *Behav Brain Res*. (2016) 297:187–95. doi: 10.1016/j.bbr.2015.10.015
29. List J, Kübke JC, Lindenberg R, Külzow N, Kerti L, Witte V, et al. Relationship between excitability, plasticity and thickness of the motor cortex in older adults. *Neuroimage*. (2013) 83:809–16. doi: 10.1016/j.neuroimage.2013.07.033
30. Mistri D, Cacciaguerra L, Storelli L, Meani A, Cordani C, Rocca MA, et al. The association between cognition and motor performance is beyond structural damage in relapsing-remitting multiple sclerosis. *J Neurol*. (2022) 269:4213–21. doi: 10.1007/s00415-022-11044-8
31. Antel J, Antel S, Caramanos Z, Arnold DL, Kuhlmann T. Primary progressive multiple sclerosis: part of the MS disease spectrum or separate disease entity? *Acta Neuropathol*. (2012) 123:627–38. doi: 10.1007/s00401-012-0953-0
32. Belvisi D, Tartaglia M, Borriello G, Baione V, Crisafulli SG, Zuccoli V, et al. Are neurophysiological biomarkers able to discriminate multiple sclerosis clinical subtypes? *Biomedicine*. (2022) 10:231. doi: 10.3390/biomedicine10020231
33. Kuzmina US, Zainullina LF, Vakhitov VA, Bakhtiyarova KZ, Vakhitova YV. The role of glutamate in the pathogenesis of multiple sclerosis. *Neurosci Behav Physiol*. (2020) 50:669–75. doi: 10.1007/s11055-020-00953-8
34. Groom AJ, Smith T, Turski L. Multiple sclerosis and glutamate. *Ann N Y Acad Sci*. (2003) 993:229–75. doi: 10.1111/j.1749-6632.2003.tb07533.x
35. Schirmer L, Velmeshev D, Holmqvist S, Kaufmann M, Werneburg S, Jung D, et al. Neuronal vulnerability and multilineage diversity in multiple sclerosis. *Nature*. (2019) 573:75–82. doi: 10.1038/s41586-019-1404-z
36. Lassmann H. Pathogenic mechanisms associated with different clinical courses of multiple sclerosis. *Front Immunol*. (2018) 9:3116. doi: 10.3389/fimmu.2018.03116
37. Ayache SS, Créange A, Farhat WH, Zouari HG, Lesage C, Palm U, et al. Cortical excitability changes over time in progressive multiple sclerosis. *Funct Neurol*. (2015) 30:257–63.
38. Goldsworthy MR, Hordacre B, Ridding MC. Minimum number of trials required for within- and between-session reliability of TMS measures of corticospinal excitability. *Neuroscience*. (2016) 320:205–9. doi: 10.1016/j.neuroscience.2016.02.012
39. Bashir S, Yoo W-K, Kim HS, Lim HS, Rotenberg A, Abu Jamea A. The number of pulses needed to measure corticospinal excitability by navigated transcranial magnetic stimulation: eyes open vs. close condition. *Front Hum Neurosci*. (2017) 11:121. doi: 10.3389/fnhum.2017.00121
40. Biabani M, Farrell M, Zoghi M, Egan G, Jaberzadeh S. The minimal number of TMS trials required for the reliable assessment of corticospinal excitability, short interval intracortical inhibition, and intracortical facilitation. *Neurosci Lett*. (2018) 674:94–100. doi: 10.1016/j.neulet.2018.03.026
41. Cavaleri R, Schabrun SM, Chipchase LS. The number of stimuli required to reliably assess corticomotor excitability and primary motor cortical representations using transcranial magnetic stimulation (TMS): a systematic review and meta-analysis. *Syst Rev*. (2017) 6:48. doi: 10.1186/s13643-017-0440-8
42. Neva JL, Hayward KS, Boyd LA. Therapeutic effects of repetitive transcranial magnetic stimulation (rTMS) in stroke. In: Sweeny K, Robbins ML, Cohen LM, editors. *The Wiley Encyclopedia of Health Psychology*. London: Wiley (2020). p. 169–79. doi: 10.1002/9781119057840.ch20
43. Madsen MAJ, Wiggermann V, Marques MFM, Lundell H, Cerri S, Puonti O, et al. Linking lesions in sensorimotor cortex to contralateral hand function in multiple sclerosis: a 7 T MRI study. *Brain*. (2022) 145:3522–35. doi: 10.1093/brain/awac203
44. Hamada M, Murase N, Hasan A, Balaratnam M, Rothwell JC. The role of interneuron networks in driving human motor cortical plasticity. *Cereb Cortex*. (2013) 23:1593–605. doi: 10.1093/cercor/bhs147