



Cognitive Involvement in Balance, Gait and Dual-Tasking in Aging: A Focused Review From a Neuroscience of Aging Perspective

Karen Z. H. Li^{1,2,3*}, Louis Bherer^{3,4,5,6}, Anat Mirelman^{7,8}, Inbal Maidan^{7,8} and Jeffrey M. Hausdorff^{7,9,10}

¹ Department of Psychology, Concordia University, Montreal, QC, Canada, ² Centre for Research in Human Development, Concordia University, Montreal, QC, Canada, ³ PERFORM Centre, Concordia University, Montreal, QC, Canada, ⁴ Department of Medicine, Université de Montréal, Montreal, QC, Canada, ⁵ Centre de Recherche de l'Institut Universitaire de Gériatrie de Montréal, Montreal, QC, Canada, ⁶ Research Center, Montreal Heart Institute, Montreal, QC, Canada, ⁷ Center for the Study of Movement, Cognition and Mobility, Neurological Institute, Tel Aviv Sourasky Medical Center, Tel Aviv, Israel, ⁸ Department of Neurology, Sackler Faculty of Medicine and Sagol School of Neuroscience, Tel Aviv University, Tel Aviv, Israel, ⁹ Department of Physical Therapy, Sackler Faculty of Medicine and Sagol School of Neuroscience, Tel Aviv University, Tel Aviv, Israel, ¹⁰ Rush Alzheimer's Disease Center and Department of Orthopaedic Surgery, Rush University Medical Center, Chicago, IL, United States

OPEN ACCESS

Edited by:

Joyce Fung,
McGill University, Canada

Reviewed by:

Francesca Morgante,
Università degli Studi di Messina, Italy
Maayan Agmon,
University of Haifa, Israel

*Correspondence:

Karen Z. H. Li
karen.li@concordia.ca

Specialty section:

This article was submitted to
Movement Disorders,
a section of the journal
Frontiers in Neurology

Received: 12 July 2018

Accepted: 09 October 2018

Published: 29 October 2018

Citation:

Li KZH, Bherer L, Mirelman A,
Maidan I and Hausdorff JM (2018)
Cognitive Involvement in Balance, Gait
and Dual-Tasking in Aging: A Focused
Review From a Neuroscience of Aging
Perspective. *Front. Neurol.* 9:913.
doi: 10.3389/fneur.2018.00913

A substantial corpus of evidence suggests that the cognitive involvement in postural control and gait increases with aging. A large portion of such studies were based on dual-task experimental designs, which typically use the simultaneous performance of a motor task (e.g., static or dynamic balancing, walking) and a continuous cognitive task (e.g., mental arithmetic, tone detection). This focused review takes a cognitive neuroscience of aging perspective in interpreting cognitive motor dual-task findings. Specifically, we consider the importance of identifying the neural circuits that are engaged by the cognitive task in relation to those that are engaged during motor task performance. Following the principle of neural overlap, dual-task interference should be greatest when the cognitive and motor tasks engage the same neural circuits. Moreover, the literature on brain aging in general, and models of dedifferentiation and compensation, in particular, suggest that in cognitive motor dual-task performance, the cognitive task engages different neural substrates in young as compared to older adults. Also considered is the concept of multisensory aging, and the degree to which the age-related decline of other systems (e.g., vision, hearing) contribute to cognitive load. Finally, we discuss recent work on focused cognitive training, exercise and multimodal training of older adults and their effects on postural and gait outcomes. In keeping with the principle of neural overlap, the available cognitive training research suggests that targeting processes such as dividing attention and inhibition lead to improved balance and gait in older adults. However, more studies are needed that include functional neuroimaging during actual, upright performance of gait and balance tasks, in order to directly test the principle of neural overlap, and to better optimize the design of intervention studies to improve gait and posture.

Keywords: gait, balance, aging, cognitive training, dual task, cognition, motor-cognitive interference

INTRODUCTION

Approximately 30% of individuals over age 65 experience one or more falls each year (1, 2), leading to significant health care costs worldwide (3). Accumulating behavioral, neuropsychological, and neuroimaging evidence shows that slow gait, postural instability, and fall risk are associated with cognitive capacity. More specifically, poor mobility in aging has been associated with exaggerated effects of cognitive-motor dual tasking, cognitive impairment, and degeneration of gray and white matter in anterior brain regions that subserve executive functions (EFs) and link to motor regions (4–8). Substantial progress has been made in understanding the cortical control of gait and balance, with several comprehensive reviews on this topic (9, 10).

Inasmuch as cognitive contributions to posture and gait are well-acknowledged in the movement sciences, there is less consideration of the basic literature on age differences in patterns of neural activity during cognitive performance, and the potential for cognitive and neural plasticity through training in old age to ameliorate the age-associated declines. These basic aging findings suggest that older adults commonly activate additional brain regions when performing cognitive tasks, compared to young adults, suggesting that cognitive involvement in motor behaviors may have different implications for older adults than for younger adults. Nonetheless, we suggest that a greater consideration of findings from the cognitive neuroscience of aging can enhance the interpretation of two major experimental paradigms: (1) the cognitive-motor dual-task paradigm, which aims to restrict or occupy the available cognitive capacity hypothesized to support motor functioning in old age and assess the impact on performance; (2) the cognitive remediation or training paradigm, which aims to enhance available cognitive capacity and/or increase neural efficiency, and thereby free up cognitive resources to support motor functioning.

Accordingly, in this review, we first describe current findings in neurocognitive aging, with an emphasis on empirical evidence of cognitive processes that have been related to postural control and gait. We then discuss major models that link neural aging with plasticity and compensatory patterns of neural activity, such as the Scaffolding Theory of Aging and Cognition [STAC: (11)] and Hemispheric Asymmetry Reduction in Older Adults [HAROLD: (12)]. We then summarize the research on cognitive plasticity in an effort to contextualize the recent application of cognitive

training or dual-task training to improve gait and posture. We then review recent empirical work on cognitive-motor dual-tasking (CMDT), and on cognitive training and associated mobility gains. Finally, we consider the implications from the cognitive neuroscience of aging work as applied to the study of gait and posture. **Figure 1** illustrates the proposed joint influences of neurocognitive aging and compensation on cognitive capacity, the implications for cognitive, perceptual and motor performance, and the potential for cognitive enrichment to improve these performances.

NEUROCOGNITIVE AGING

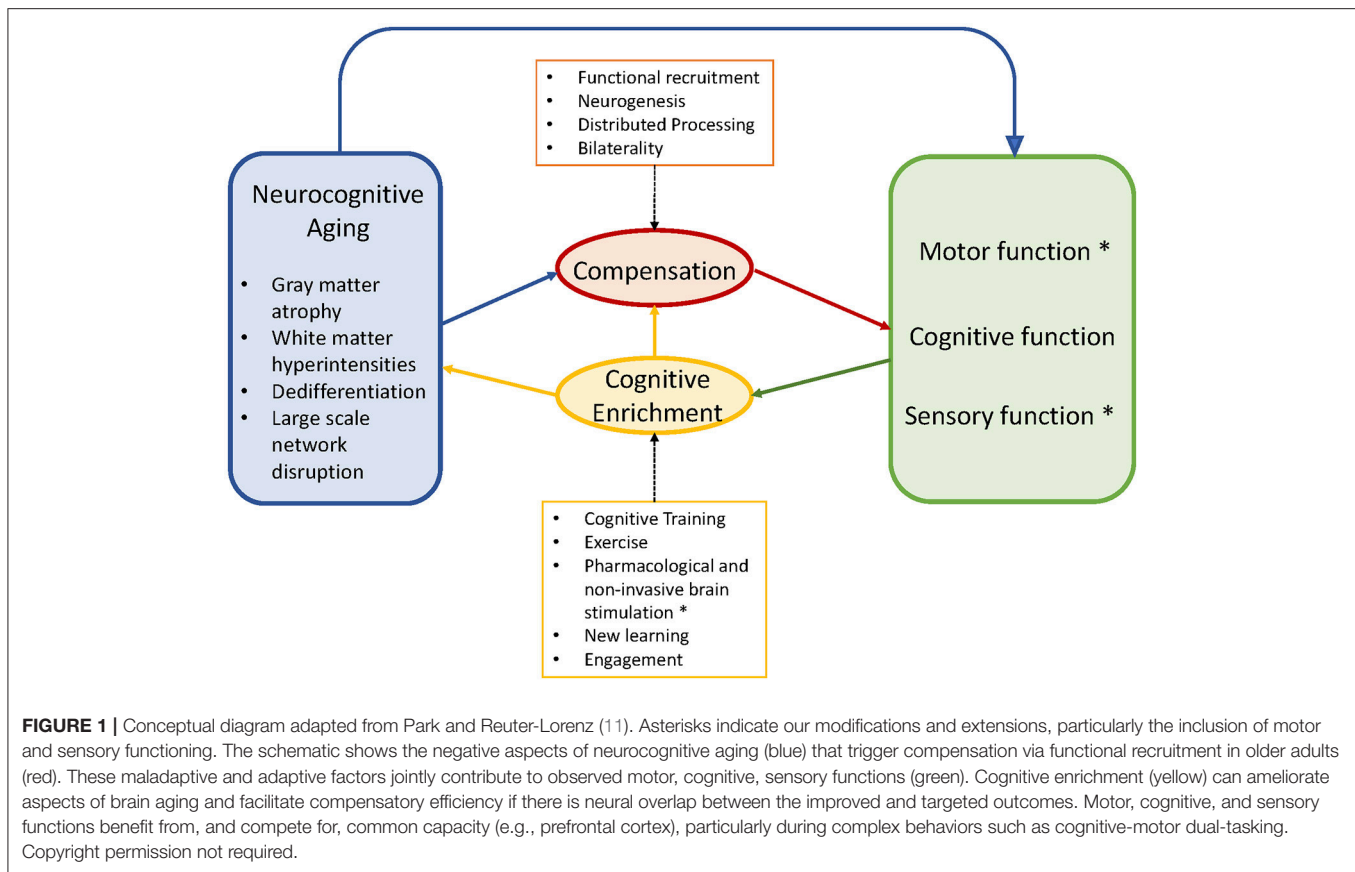
Brain aging has been well-described in terms of both structural and functional dimensions (13), multiple chapters; (9). Briefly, longitudinal studies indicate that cortical gray matter volumes decrease linearly across adulthood (from the 20s to 80s) in frontal and temporal regions, whereas other regions such as primary visual, parietal, and entorhinal cortex remain relatively stable across adulthood (14). Regions such as the dorsolateral prefrontal cortex (DLPFC) and the orbitofrontal cortex appear to be most age-sensitive (15), and are associated with concomitant behavioral declines in cognitive functions such as working memory, episodic memory encoding, and divided attention (13). Other regions with accelerated decline in aging include the cerebellar hemispheres and the hippocampus (16). Diffusion tensor imaging (DTI) reveals normative changes in white matter volume and integrity with aging, such that anterior white matter tracts show greater age-related declines as compared to more posterior tracts [e.g., (17)].

In the adult lifespan, these white matter changes precede gray matter volumetric declines, thus compromising the efficiency of communication between regions (11). White matter hyperintensities (WMH), an index of lesion burden, explain more of the age-related variance in cognitive performance than total brain volumes (11). Recent work suggests a negative relationship between white matter integrity and functional activation, as if to compensate for the white matter decline, coined the “less wiring more firing” principle (18, 19).

COMPENSATION

Functional neuroimaging studies of cognitive aging, using primarily MRI or PET, commonly reveal age-related increases in frontal activation bilaterality during tests of memory, which are associated with better cognitive performance [e.g., (20, 21)]. Another notable pattern, observed in older compared to younger adults, is prefrontal up-regulation during memory encoding, coupled with reduced parahippocampal activation, suggesting a compensatory function for the extra neural recruitment in response to decreased activity in the task-relevant brain regions (22). Similarly, in auditory tasks such as speech perception in the presence of noise, older adults exhibit greater activity in frontal regions and less activity in auditory cortex (23), possibly reflecting the recruitment of intact cognitive functions such as

Abbreviations: ACC, Anterior cingulate cortex; BDNF, Brain derived neurotrophic factor; CMDT, Cognitive-motor dual-tasking; DLPFC, Dorsolateral prefrontal cortex; DT, Dual task; DTC, Dual-task cost; DTI, Diffusion tensor imaging; EEG, Electroencephalography; EF, Executive function; FA, Fractional anisotropy; HAROLD, Hemispheric asymmetry reduction in older adults; HbO₂, Oxy-hemoglobin; HbR, Deoxy-hemoglobin; IGF, Insulin-like growth factor; MRI, Magnetic resonance imaging; NIRS, Near-infrared spectroscopy; PD, Parkinson's disease; PET, Positron emission tomography; PFC, Prefrontal cortex; SMA, Supplementary motor area; STAC, Scaffolding theory of cognitive aging; TUG, Timed-up-and-go; VEGF, Vascular endothelial growth factor; VLPFC, Ventrolateral prefrontal cortex; VR, Virtual reality; WMH, White matter hyperintensities.



verbal ability and semantic memory (24). Notably, the observed increase in neural recruitment among older adults may only be effective in mitigating the negative effects of neural aging to a point. In a study of aging and *n*-back working memory performance, older adults performed as well as younger adults (1-back) and showed greater bilateral prefrontal activity (BA 9) during that condition. However, with greater levels of memory load (2- and 3-back), older adults performed worse than younger adults and did not exhibit increased prefrontal activity (25), suggesting that a functional limit of compensatory recruitment had been reached.

Notably, not all extra activations are considered adaptive. Dedifferentiation, or loss of neural specificity, has been observed in the visual cortex where activations are more diffuse in older than younger adults [e.g., (26)]. These functional imaging observations are mirrored in behavioral observational studies of sensory and sensorimotor abilities, which appear to share increasing variance with many cognitive functions in older age (27, 28). Similarly, older adults exhibit ability dedifferentiation (29) within EF measures (inhibition, updating, switching) that are identified in young adulthood as relatively distinct factors (30).

Finally, studies of functional connectivity suggest that the dynamic coordination of large-scale networks is disrupted with aging, potentially leading to the observed cognitive decline [e.g., (31, 32)]. It appears that older adults recruit the fronto-parietal

and salience networks less consistently than young adults (33), resulting in diminished frequency of switching between large-scale networks and reduced flexibility in performance (34). Age-related decline in white matter integrity and gray matter volume are correlated with activity in prefrontal nodes of the salience and fronto-parietal network, possibly a consequence of compensatory mechanisms (33).

Together, these negative attributes of brain aging (e.g., gray and white matter changes, dedifferentiation, and large scale network disruption) have been conceptualized as complementary to the observed compensatory patterns of brain activity (e.g., frontal recruitment, bilaterality) in models of cognitive aging such as the STAC model [(11); STAC-R: (35)], and HAROLD model (12). Both models propose that upregulation of additional brain regions occurs in response to age-related neurodegeneration, and that older adults who do not exhibit such upregulation tend to exhibit lower levels of cognitive performance than those who do. Notably, the potentially positive, compensatory patterns of neural recruitment take place in the same regions that show the greatest degeneration with aging. However, the research on cognitive enrichment (36, 37) offers encouragement in terms of potential for the improvement of EFs. In the STAC models, the capacity to engage in compensatory scaffolding is enhanced through cognitive training, social stimulation, and exercise (11, 35).

COGNITIVE ENRICHMENT

While a detailed review of the topic of cognitive enrichment in aging research is beyond the scope of the present review [see (36, 37)], we highlight a few key issues that are of relevance for the involvement of cognitive aging in balance and gait. A central issue in this research domain is the extent to which older adults can improve through cognitive training, and if the trained skill(s) transfer to untrained skills. Process-based cognitive training studies, in which targeted cognitive mechanisms are trained via computer programs, commonly show that healthy older adults exhibit robust gains in the trained cognitive processes or skills (37, 38). However, older adults do not exhibit significant transfer beyond the trained tasks unless there is an overlap in underlying processes [e.g., (39)]. By contrast, greater transferability of trained skills is observed in studies that target EFs such as divided attention, working memory, and task switching (40–43).

The question of when to expect broader transfer of training can be addressed with the Principle of Neural Overlap (36, 42, 44). This principle proposes that the degree of common neural activation between trained and untrained cognitive tasks should correspond to the degree of training-related transfer observed. This is illustrated well in Dahlin's study of EF training and transfer (42). Young and older adults were trained for 5 weeks on a memory updating task engaging the striatum, as shown in pre-training fMRI scans. The researchers also assessed an array of transfer tasks that showed varying levels of functional and neural overlap with the trained updating task. In the young adults, behavioral evidence of transfer was greatest for another updating task (*n*-back) associated with striatal activation, and less evident for those outcomes engaging other neural structures. In contrast, older adults showed no training-related transfer to the *n*-back task, nor was there any striatal activation during this task.

Kramer's early studies of dual-task training (45) showed greater training-related transfer to other variants of dual-task performance when a variable priority procedure (emphasis on two cognitive tasks; Task A vs. B changed across blocks) was used, compared to a fixed priority procedure involving equal attention allocation between tasks [see also (46, 47)]. Importantly, although older adults can be trained to divide attention accurately between two tasks when instructed, the allocation of attention between tasks of differing priority (48) or difficulty level (49) in more ecological contexts may differ from that observed in the laboratory.

The extant evidence on cognitive and neural plasticity appears promising [see (36, 50) for reviews] and relevant to mobility. Lövdén et al. (51) compared young and older adults after roughly 100 h of training using multiple cognitive tasks (working memory, episodic memory, processing speed), reporting significant white matter improvement (FA) in the older adults, particularly in the anterior portion of the anterior cingulate cortex (ACC). Behavioral changes were observed in working memory, perceptual speed and episodic memory, although the degree of improvement was differentially greater in younger adults only for perceptual speed and episodic memory. In an fMRI study (52), using Bherer's dual-task training protocol, young adults showed significant pre-to-post increases in bilateral

DLPFC activity while performing the trained task, and the degree of activation change correlated with the degree of improvement in behavioral reaction time data for the dual-task condition. In follow-up work, older adults showed a training-related increase in left VLPFC and a decrease in DLPFC bilaterally, suggesting a shift to using articulatory rehearsal (i.e., subvocal repetition of task-relevant information) as a control strategy (53). Finally, functional neural changes appear to precede structural changes, occurring after as little as 9 h of multimodal cognitive training in older adults (54).

A second major strategy of cognitive enrichment is exercise training. As reviewed elsewhere (55, 56), training studies have abundantly demonstrated that moderate aerobic exercise such as walking, swimming, or cycling, improves attentional control and executive functioning in older adults, compared to non-aerobic protocols such as stretching or toning (57–59). Strength or resistance training can also benefit cognitive ability and brain health (55, 60), but evidence for its impact on multiple EFs is presently limited in comparison to the aerobic training findings. Neuroplastic changes after aerobic training echo the behavioral cognitive findings in showing increased efficiency in brain regions associated with executive control processes. For example, (61) compared older adults assigned to an aerobic exercise versus a stretch control condition on fMRI during flanker task selective attention performance. The aerobic group showed improved attentional control, and increased task-related activity in right middle frontal gyrus and superior parietal regions. The aerobic group also showed greater volumetric increases in anterior white matter, gray matter in left inferior frontal gyrus, anterior cingulate, and superior temporal gyrus (62). Using DTI, (63) found increases in the white matter integrity (fractional anisotropy: FA) of prefrontal and temporal regions in older adults and associated improvements in short-term memory after aerobic exercise (walking) but not toning. Aerobic training appears to trigger global neuroplastic effects by increasing the production of neurotrophic factors (e.g., BDNF, IGF-1, VEGF) that are able to cross the blood-brain barrier and support neurogenesis, vascularization, axonal repair, and synaptogenesis, particularly in frontal, prefrontal, and hippocampal regions [Erickson (64)]. Notably, levels of these neurotrophic factors were positively associated with exercise-induced increases in temporal lobe functional connectivity (65).

A recent meta-analysis examined combined, multi-modality training protocols and cognitive outcomes (66). Compared to exercise training alone, combined exercise and cognitive training appears superior in the majority of aging studies [e.g., (67)], whereas multi-modal training is not consistently superior to cognitive training alone [e.g., (68)].

Together, the extant findings on neurocognitive aging and cognitive enrichment reveal a number of observations that are relevant for our understanding of postural control and gait in aging. First, neuroimaging findings suggest that the health of white matter tracts and functional connectivity between brain regions may be more age-sensitive than volumetric or functional assessments of discrete brain regions. We note that while many earlier studies focused on the relationships between changes in the structure of specific brain regions and their

impact on behavioral outcomes like CDMT, more recent work emphasizes the connections across networks; structural changes in the PFC, for example, may reverberate across a relatively large attention network that extends beyond the PFC. Second, age-related dedifferentiation, coupled with compensatory scaffolding, suggests that there may be qualitative differences in neural activation and behavioral strategies exhibited in young versus older adults. Third, cognitive training research suggests that targeting specific EFs, and including a flexibility or variable-priority component, yields the broadest transfer to untrained cognitive skills. However, an important qualification is that, following the principle of neural overlap, training efficacy apparently depends on the degree of neural similarity between trained and untrained skills. Similarly, the degree of interference observed during dual-tasking should depend on the degree of competition for common neural structures.

We turn next to recent findings in cognitive-motor dual-tasking and aging, focusing on the neural underpinnings of single-task gait and balance as well as CDMT. The fact that CDMT induces activation of cognitive and motor networks simultaneously, both networks that share common pathways as well as very specific pathways, enables the examination of their vulnerability during cognitive-motor interference and the compensatory mechanisms that are called into play with aging.

COGNITIVE REDUCTION: COGNITIVE-MOTOR DUAL-TASKING (CMDT)

The ability to divide attention between cognitive and motor activity has been examined in efforts to quantify the amount of cognitive capacity recruited for motor functioning (8, 69). CDMT designs typically contrast a balance or walking task performed alone (single task), versus the same motor task performed with a concurrent cognitive task (e.g., talking, mental arithmetic). This comparison forms the basis for the calculation of dual-task costs (DTCs: $[\text{single} - \text{dual task}]/\text{single}$), which indicate the degree of performance decline or cognitive recruitment that is prompted by the secondary task. Cognitive recruitment to aid motor performance is presumed to reduce the already limited cognitive capacity that can be devoted to a concurrent cognitive task in old age (28, 48).

Briefly, the behavioral CDMT research on postural control shows that age-related DTCs are exacerbated by a variety of factors such as postural threat (70), reduced sensory inputs (71), platform perturbations (72), and concurrent visual imagery (73). Similarly, in studies of gait, age-related increases in DTCs are observed when walking over obstacles (74), and with increased complexity of walking (75). Simple cognitive loads may elicit dual-task motor facilitation relative to no-load conditions, while more complex cognitive loads elicit proportionately greater costs in postural stability (76) and in an array of spatiotemporal gait parameters (77). In light of the known frontal recruitment associated with age-related sensory decline, it is perhaps not surprising that additional competition for cognitive capacity is observed when auditory challenges are experimentally imposed

on dual-task walking (78) and dual-task balance (79), or when older adults with hearing impairment undergo CDMT (80).

Structural Brain Changes Associated With Gait, Balance, and CDMT

Studies of brain structure and mobility provide convergent evidence for the cognition-mobility link in older adults. For example, gray matter volumes in the left DLPFC were correlated with usual gait speed in healthy older adults, whereas reduced volumes in putamen and superior posterior parietal lobule were associated with balance difficulty during semi-tandem stance (81). Interestingly, the association between prefrontal volumes and gait speed was mediated by cognitive processing speed (82). In Parkinson's disease (PD), which has been viewed to some degree as a model of "unsuccessful" aging, structural and functional MRI were used to compare PD fallers and non-fallers (83). The fallers, as compared to non-fallers, showed reduced volumes in the caudate head region of the basal ganglia, coupled with increased resting state connectivity in posterior parietal regions of the central executive network. In general, the DTCs that occur in aging are more exaggerated in the presence of neurodegenerative disease, like PD [see (84) for a recent review]. This pattern of reduced structural integrity in task-specific brain regions, coupled with increased neural recruitment in other areas, is consistent with the STAC model, in that prefrontal recruitment is considered a compensatory response to neural degeneration of conventionally relevant networks.

Age-related changes in white matter integrity have also been implicated in mobility status. Moscufo et al. (85) observed associations in healthy older adults between gait speed and WMH burden in the anterior corpus callosum (splenium), attributing the reduction of mobility to a disruption of interhemispheric transfer of visual and somatosensory information. Similarly, Srikanth et al. (86) reported that bilateral frontal periventricular white matter lesion volumes correlated with a composite gait score, and attributed this association to a disconnection from frontal motor cortical areas with subcortical regions (e.g., basal ganglia). Similar to Rosano et al. (82) gray matter results, Bolandzadeh et al. (87) found that the relationship between WMHs in frontal corpus callosum and gait speed was mediated by cognitive processing speed. Everyday levels of physical activity also appear to moderate the relationship between global WMH burden and mobility (88), similar to the cognitive findings (63). Ezzati et al. (89) reported significant associations between cortical gray matter volumes and usual gait speed, but not with total white matter or ventricular volumes. In contrast, in the LADIS study of patients presenting with mild memory complaints (90, 91), the severity of age-related white matter changes was associated with the severity of gait and functional decline. Using DTI methods (FA), Bruijn et al. (92) reported significant associations in older adults between parameters of gait quality during treadmill walking and the diffusivity of the left anterior thalamic radiation (connecting the thalamus to frontal regions).

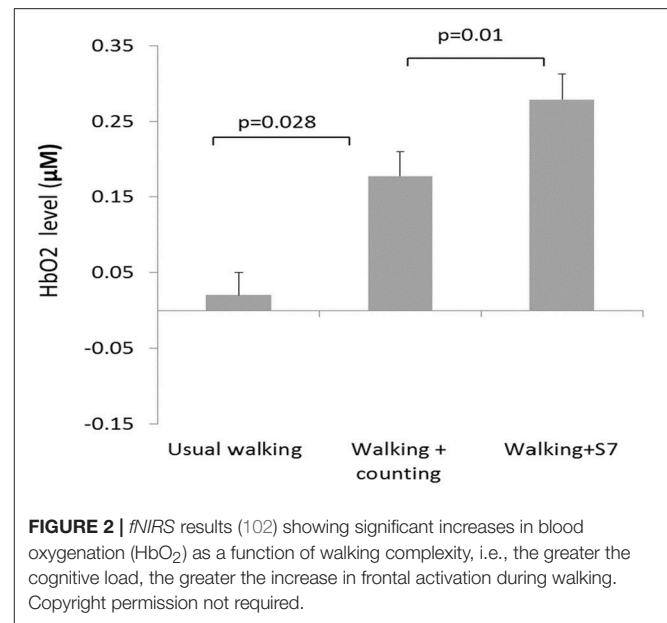
Functional Imaging of Gait and Balance

There is a growing number of functional brain imaging studies during walking [for reviews: (93, 94)]. Imagined walking

and dual-task walking during fMRI scans elicit activations in supplementary motor (SMA) and prefrontal regions in older adults, but show less activity in the same brain regions than what is observed during actual walking as measured using portable neuroimaging methods (95). Using fMRI and motor imagery during imagined walking, compared to watching a film, PD patients had greater activation in inferior frontal gyrus and precuneus than healthy controls [Maidan (96)]. These findings suggest that there is increased recruitment of frontal regions in PD even during imagined walking; perhaps this is an ineffective compensatory attempt. In a study of healthy older adults, resting state functional connectivity in sensorimotor, visual, vestibular, and left fronto-parietal regions was associated with off-line gait velocity under single-task and walking while talking CMDT conditions (reciting alternating letters of the alphabet), and supplementary motor and prefrontal regions were associated with only with CMDT (97).

The development of portable functional near-infrared spectroscopy [fNIRS: (98)] allows brain activity to be measured during active, upright (not just imagined) walking. Like fMRI, fNIRS directly measures the hemodynamic response (oxy- & deoxygenated hemoglobin: HbO₂, HbR), and is more tolerant of motion artifacts (99). In early studies of fNIRS and dual-task walking, Holtzer et al. (100, 101) reported greater prefrontal activation overall (HbO₂) in younger versus older adults, and increased HbO₂ during dual-task walking while talking compared to walking alone in young adults. By contrast, older adults showed less of a dual-task change, and their HbO₂ levels did not correlate with walking speed, suggesting that older adults show less efficient or effective frontal recruitment compared to young adults. In a recent study of young adults, a graded positive association between rostral frontal cortex HbO₂ levels (Brodmann's area 10) and increasingly complex dual-task contexts (walking alone, with counting forward, and with serial 7s subtraction) was observed (see **Figure 2**) (102). Others recently reported that activity in bilateral prefrontal cortices increased with cognitive load (*n*-back auditory working memory) during walking (103). Further, younger adults showed more left lateralization whereas older adults showed more bilateral activity (see **Figure 3**), consistent with the HAROLD model (12). In contrast, (104) found decreased activation of the prefrontal cortex under CMDT conditions (walking + visual checking) relative to single-task walking, and this downregulation was associated with greater dual-task costs in walking. The authors surmise that older adults were recruiting other posterior regions during complex CMDT as an alternative to prefrontal cortex, although their fNIRS array did not permit empirical confirmation. Using a dynamic balance protocol with varying sensory inputs (somatosensory, visual, vestibular) and fNIRS, others have shown that both middle-aged and older adults increase their frontal-lateral blood oxygenation during dynamic balance tasks (105).

Another recent development in the gait literature is the assessment of walking using electroencephalography [EEG: (10, 106)]. Notably, spectral power analyses have revealed that the gamma band is sensitive to manipulations of attentional load during walking in older adults and in neurological

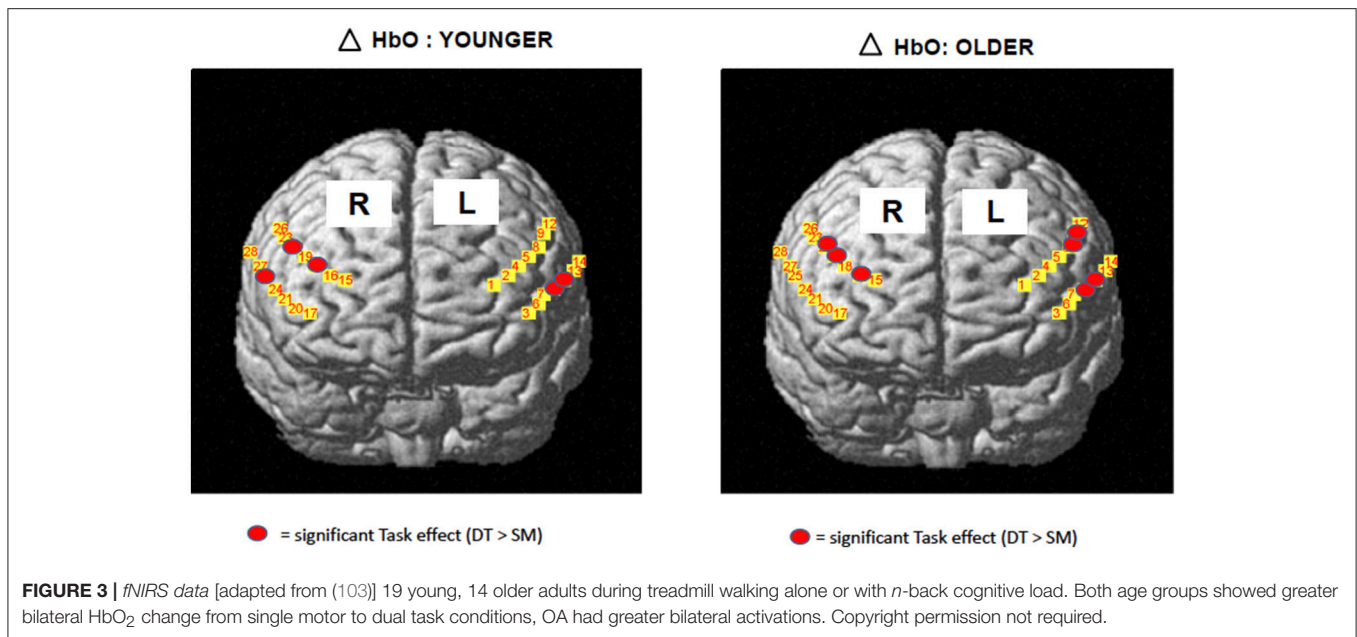


patients. More gamma band activity (30–100 Hz), which is associated with attention, learning, and memory (107), was observed in neurological patients than in healthy older adults (106), providing convergent evidence for increased cognitive compensation. Functional neuroimaging studies of balance, reviewed elsewhere (10) and in this special issue, reveal a similar pattern. For example, in EEG studies using postural evoked potentials and platform translations, the N100 amplitude, associated with attentional orienting responses, commonly shows attenuation in response to perturbations and cognitive loads such as visuomotor tracking or visual memory [e.g., (108, 109)].

In sum, the extant findings on neuroimaging, aging, and mobility suggest that many of the age-normative brain changes associated with declining cognitive control are associated with diminished gait and postural control. The literature on online neuroimaging of gait implicates prefrontal, premotor, and SMA regions (93). Under more challenging conditions involving CMDT, younger adults appear to recruit left prefrontal regions whose activity is related to better performance, whereas older adults show more bilateral recruitment that is not as well-linked to performance.

COGNITIVE ENHANCEMENT

Interventions designed to improve CMDT performance have focused largely on practicing the targeted motor function alone, termed “specific single-task training,” or when combined with a cognitive load, termed “specific dual-task training” (110). This is contrasted with training on related but non-matching motor tasks, termed “general single- or dual-task training.” The latter is recommended to strengthen attentional flexibility and dual-task management [e.g., (47, 111–113)]. The present focus, however, is to review training studies that more directly evaluate the cognitive contributions to balance and gait improvements.

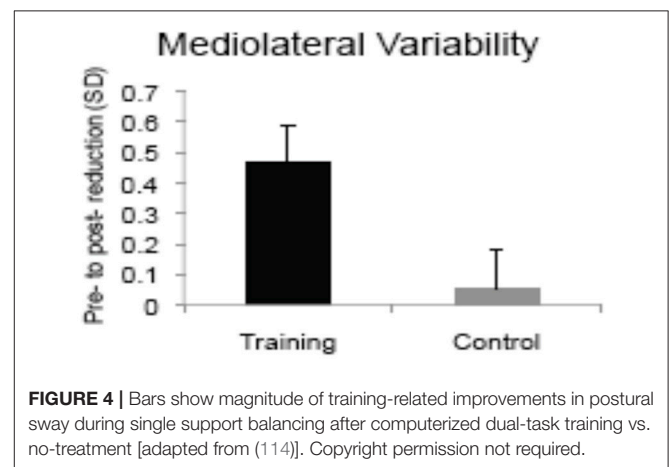


The most clear-cut approach is therefore to selectively enhance cognitive capacity using seated computerized cognitive training.

Computerized Cognitive Training

An early computerized training study examined the effects of dual-task training on single and dual-task postural control (114). Healthy older adults completed five sessions of seated dual-task training involving two visual-manual reaction time tasks (40). The trained group showed pre-to-post improvements in static and dynamic balance measures given singly and with a concurrent *n*-back cognitive load, whereas the no-treatment control group showed negligible change (see Figure 4). The degree of learning in the trained cognitive task, particularly in dual-task trials, was correlated with the magnitude of improvement in postural stability, suggesting that the “active ingredient” of the training was dual-task coordination and not general processing speed. As mentioned earlier, the same DT training protocol led to increased left VLPFC activity in older adults, and reduced DLPFC activity while performing the trained task after training compared to before training (52). Future research comparing brain activity at pre- and post-training during motor and CMDT performance is needed to directly evaluate the neural overlap hypothesis, however the extant evidence of neuroplasticity is aligned with the upregulation observed in fronto-lateral brain regions during dynamic balance (105).

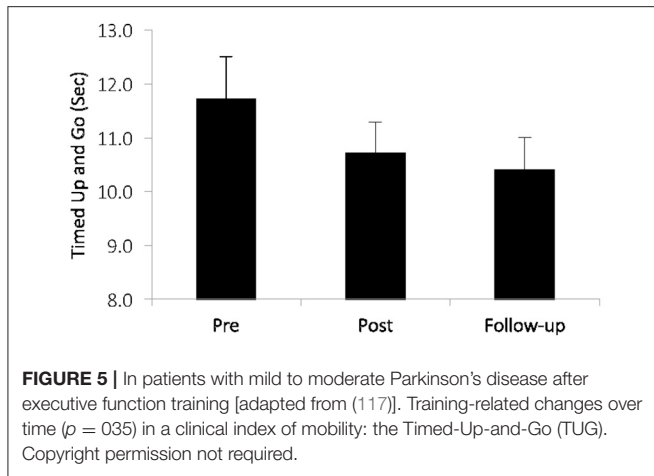
Others have examined commercially available cognitive training programs targeting multiple cognitive and EF processes such as attention, visual working memory, and speed of processing, and observed greater improvements in Timed-Up-and-Go (TUG), gait velocity, and dual-task gait, compared with untrained controls (115, 116). In older fallers, cognitive training was more beneficial for TUG performance than in non-fallers (116). In low to moderate-severity patients with PD, significant



improvements were found on TUG and global cognition after 36 sessions of EF training [(117), see Figure 5].

Pharmacological and Non-pharmacological Stimulation

Another approach to enhancing cognitive function in order to improve mobility and CMDT is to leverage the cognitive enhancing effects of certain pharmacologic agents. For example, methylphenidate and rivastigmine apparently improve cognition and mobility and, at least among people with PD, a reduction in fall risk may be related to the effects of the drug on cognition and CMDT (118–121). While the mechanisms are likely different from that of cognitive remediation training, these studies further highlight the idea that “cognitive” interventions can enhance mobility. Similarly, recent work using non-invasive brain stimulation that targets cognitive areas also supports



this idea. Indeed, a number of studies have reported that stimulation of the DLPFC either using repetitive transcranial magnetic (rTMS) or transcranial direct current stimulation (tDCS) enhances cognition and reduces dual-tasks costs of balance and gait in older adults and patient groups [e.g., (122–125)].

Exercise Training

Beyond the non-motor cognitive training approach, more recent studies have added aerobic exercise training, again to enhance cognitive capacity in frontal regions and thereby free up more capacity to support motor control. Synergistic effects of combined cognitive and aerobic training were examined in a study of healthy older adults, randomized to one of four training conditions: aerobic plus EF training, aerobic plus computer lessons (cognitive placebo), EF training plus stretching (physical placebo), or cognitive placebo plus physical placebo (68, 126). Each group completed two exercise sessions and a separate computer session per week for 12 weeks. Across an array of cognitive and physical outcome measures, including CMDT gait and balance, the first three training formats yielded equivalent benefits, suggesting the absence of synergistic benefits with combined training. Similarly, cognitive training showed equivalent benefits to aerobic exercise on spontaneous walking speed (127). Using similar training tasks (aerobic cycling, computerized DT training), subsequent research with healthy older adults has examined whether delivery format (sequential versus simultaneous) yields differential benefits to CMDT. The sequentially trained group showed greater gains in working memory outcomes than the simultaneously trained group (128), whereas both groups showed similar CMDT Sit-to-Stand improvements [(129); see also (130)].

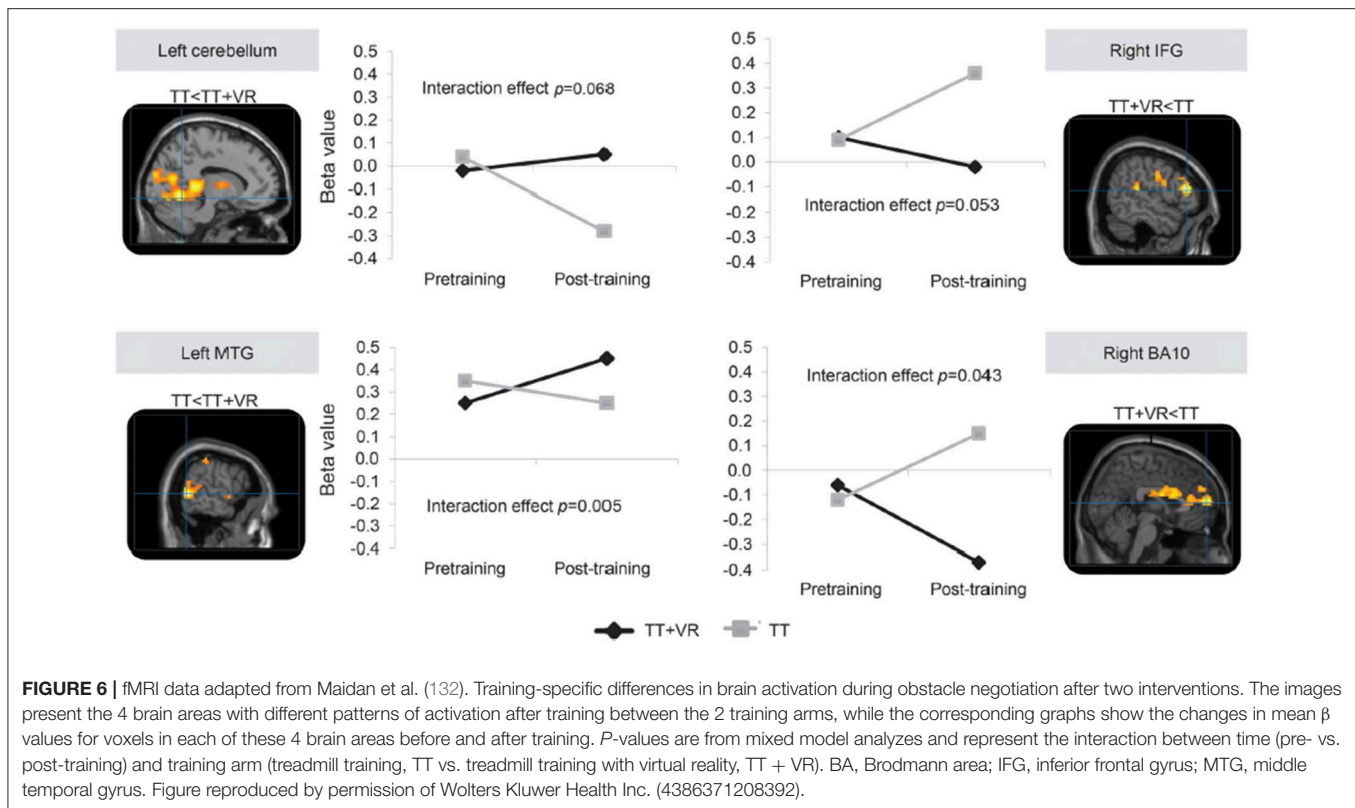
A final category of multi-modal training that contains a cognitive component is exergaming or virtual reality treadmill training. In contrast to the foregoing DT training approaches, this category reflects training activities in which the cognitive processing is integral to the motor task. For example, a randomized controlled study of older adults with a history of falls based on largely motor (i.e., PD patients), cognitive (i.e., people

with mild cognitive impairment) and a mixed background (i.e., idiopathic fallers), compared the impact of treadmill training to the impact of treadmill training augmented with non-immersive virtual reality (VR) for 6 weeks (3 times per week), that targeted both cognitive aspects of safe ambulation (e.g., EF) and mobility (131). Falls, a problem presumably related to motor and cognitive function and to CMDT, were significantly reduced in the group who trained with treadmill training that included the targeting of cognitive aspects. More specifically, 6 months after the end of training, the incident rate of falls was significantly lower in the treadmill training plus VR group than in the treadmill training group (incident rate ratio 0.58, 95% CI 0.36–0.96; $p = 0.033$). Moreover, although usual single task walking improved similarly in both groups, walking under challenging conditions (e.g., obstacle negotiation variability and clearance) improved more in those who also received the cognitive training. Interestingly, in a subset of subjects with PD who underwent imaging before and after the training, fMRI and fNIRS results supported the added value of the cognitive component (see **Figure 6**). For example, among the subjects who underwent treadmill training alone, prefrontal activation during dual-task walking and obstacle negotiation increased after training, while in the combined training arm, activation decreased (132, 133). These findings support the idea that cognitive-motor training can reduce the need for cognitive compensation and the impact of CMDT, improve performance (more than motor training alone), and lead to changes in brain function and activation patterns.

CONCLUSIONS AND RECOMMENDATIONS

In the foregoing review, we have discussed aspects of the cognitive neuroscience of aging that are pertinent to the study of gait and balance in aging. Accordingly, we highlight several key points that might inform future studies of CMDT. First, the research on brain aging suggests a more accelerated age-related decline of gray and white matter in anterior structures than posterior structures, with white matter changes preceding gray matter atrophy, both leading to alterations within and across brain networks. Models of cognitive and brain aging suggest that compensatory prefrontal activity, or neural recruitment, may occur in the face of structural and functional declines in response to task demands that exceed available resources. However, the same prefrontal regions are also implicated in supporting age-related declines in sensory, cognitive, and motor domains. Thus, the aging of multiple systems implies competition for common neural structures and potential tradeoffs when older adults multi-task or when any one domain of functioning becomes more challenging (e.g., with sensory or cognitive impairment, with reduced mobility). We add that the same patterns of interference and tradeoff may occur in young adults, given sufficiently challenging task demands.

The principle of neural overlap applies both to the issue of dual-task interference, and to the issue of training-related transfer. In the case of CMDT performance, we argue that consideration of the neural underpinnings of single-task



cognitive and motor conditions, compared to the CMDT condition, can elucidate patterns of dual-task costs and facilitation. Similarly, consideration of the neural underpinnings of cognitive training or combined multimodal training should provide more direct evidence for the type of cognitive scaffolding and scaffolding enhancement that, to date, has been examined primarily in the realm of cognitive outcomes. Again, following the principle of neural overlap, it would be expected that training protocols that target discrete cognitive processes are likely to benefit related cognitive performance, either tested singly or in the context of CMDT performance. In contrast, the same cognitive training protocols might also indirectly benefit single- and dual-task motor performance by enhancing the capacity for compensatory cognitive or neural recruitment. Future studies should include neural outcome measures at pre- and post-training if feasible, in addition to independent behavioral indices of the targeted cognitive processes to be trained. Associating the magnitude of cognitive and neural plasticity to the magnitude of improvement in motor and CMDT performances would provide a more detailed understanding of the “active ingredients” underlying cognitive training effects.

REFERENCES

1. Hausdorff JM, Rios DA, Edelberg HK. Gait variability and fall risk in community-living older adults: a 1-year prospective study. *Arch Phys Med Rehabil.* (2001) 82:1050–6. doi: 10.1053/apmr.2001.24893

Returning to the question posed in the introductory section, the extant research on neurocognitive aging and plasticity suggests that we cannot assume that the nature of cognitive involvement in postural control and gait is the same in younger and older adults. The available studies that combine age-comparisons, behavioral and functional neuroimaging measures of single-task cognitive, single-task motor, and dual-task performance, are few, and even more scant if one includes cognitive training and pre- and post-training imaging data.

AUTHOR CONTRIBUTIONS

KL and JH wrote the original draft of the manuscript. AM, IM, and LB contributed additional material. All co-authors contributed to the conceptualization of the manuscript.

FUNDING

Manuscript preparation was supported by the Natural Sciences and Engineering Research Council of Canada (NSERC: RGPIN/6662-2016) awarded to KL.

2. Tinetti ME, Speechley M, Ginter SF. Risk factors for falls among elderly persons living in the community. *NEJM* (1988) 319:1701–7. doi: 10.1056/NEJM198812293192604
3. Davis JC, Robertson MC, Ashe MC, Liu-Ambrose T, Khan KM, Marra CA. International comparison of cost of falls in older adults living in

- the community: a systematic review. *Osteoporos Int.* (2009) 8:1295–306. doi: 10.1007/s00198-009-1162-0
4. Hausdorff G, Yogev S, Springer S, Simon ES, Giladi N. Walking is more like catching than tapping: gait in the elderly as a complex cognitive task. *Exp Brain Res.* (2005) 164:541–8. doi: 10.1007/s00221-005-2280-3
 5. Holtzer R, Verghese J, Xue X, Lipton RB. Cognitive processes related to gait velocity: results from the Einstein aging study. *Neuropsychology* 20:215–23. doi: 10.1037/0894-4105.20.2.215
 6. Montero-Odasso M, Verghese J, Beauchet O, Hausdorff JM. Gait and cognition: a complementary approach to understanding brain function and the risk of falling. *J Am Geriatr Soc.* (2012) 60:2127–36. doi: 10.1111/j.1532-5415.2012.04209.x
 7. Van Iersel MB, Kessels RP, Bloem BR, Verbeek AL, Olde Rikkert MG. Executive functions are associated with gait and balance in community-living elderly people. *J Gerontol Biol Med Sci.* (2008) 63:1344–9. doi: 10.1093/gerona/63.12.1344
 8. Yogev-Seligmann G, Hausdorff JM, Giladi N. The role of executive function and attention in gait. *Mov Dis.* (2008) 23:329–42. doi: 10.1002/mds.21720
 9. Seidler RD, Bernard JA, Burutolu TB, Fling BW, Gordon MT, Gwin JT, et al. Motor control and aging: links to age-related brain structural, functional, and biochemical effects. *Neurosci Biobehav Rev.* (2010) 34:721–33. doi: 10.1016/j.neubiorev.2009.10.005
 10. Wittenberg E, Thompson J, Nam CS, Franz JR. Neuroimaging of human balance control: a systematic review. *Front Hum Neurosci.* (2017) 11:170. doi: 10.3389/fnhum.2017.00170
 11. Park DC, Reuter-Lorenz P. The adaptive brain: aging and neurocognitive scaffolding. *Ann Rev Psychol.* (2009) 60:173–96. doi: 10.1146/annurev.psych.59.103006.093656
 12. Cabeza R. Hemispheric asymmetry reduction in older adults: the HAROLD model. *Psychol Aging* (2002) 1:85–100. doi: 10.1037/0882-7974.17.1.85
 13. Cabeza R, Nyberg L, Park D. *Cognitive Neuroscience of Aging: Linking Cognitive and Cerebral Aging.* New York, NY: Oxford University Press (2005).
 14. Raz N, Rodrigue KM, Haacke EM. Brain aging and its modifiers. *Ann N Y Acad Sci.* (2007) 1097:84–93. doi: 10.1196/annals.1379.018
 15. Raz N, Gunning FM, Head D, Dupuis JH, McQuain J, Briggs SD, et al. Selective aging of the human cerebral cortex observed *in vivo*: differential vulnerability of the prefrontal gray matter. *Cereb Cortex* (1997) 7:268–82.
 16. Raz N, Lindenberger U, Rodrigue KM, Kennedy KM, Head D, Williamson A, et al. Regional brain changes in aging healthy adults: general trends, individual differences and modifiers. *Cereb Cortex* (2005) 15:1676–89. doi: 10.1093/cercor/bhi044
 17. Davis SW, Dennis NA, Buchler NG, White LE, Madden DJ, Cabeza R. Assessing the effects of age on long white matter tracts using diffusion tensor tractography. *Neuroimage* (2009) 46:530–41. doi: 10.1016/j.neuroimage.2009.01.068
 18. Daselaar SM, Iyengar V, Davis SW, Eklund K, Hayes SM, Cabeza RE. Less wiring, more firing: low-performing older adults compensate for impaired white matter with greater neural activity. *Cereb Cortex* (2015) 25:983–90. doi: 10.1093/cercor/bht289
 19. Davis SW, Kragel JE, Madden DJ, Cabeza R. The architecture of cross-hemispheric communication in the aging brain: linking behavior to functional and structural connectivity. *Cereb Cortex* (2012) 22:232–42. doi: 10.1093/cercor/bhr123
 20. Cabeza R, Grady CL, Nyberg L, McIntosh AR, Tulving E, Kapur S, et al. Age-related differences in neural activity during memory encoding and retrieval: a positron emission tomography study. *J Neurosci.* (1997) 17:391–400.
 21. Gutches AH, Welsh RC, Hedden T, Bangert A, Minear M, Liu LL, et al. Aging and the neural correlates of successful picture encoding: frontal activations compensate for decreased medial-temporal activity. *J Cogn Neurosci.* (2005) 17:84–96. doi: 10.1162/0898929052880048
 22. Cabeza R, Daselaar SM, Dolcos F, Prince SE, Budde M, Nyberg L. Task-independent and task-specific age effects on brain activity during working memory, visual attention and episodic retrieval. *Cereb Cortex* (2004) 14:364–75. doi: 10.1093/cercor/bhg133
 23. Wong PCM, Jin JX, Gunasekera GM, Abel R, Lee ER, Dhar S. Aging and cortical mechanisms of speech perception in noise. *Neuropsychologia* (2009) 47:693–703. doi: 10.1016/j.neuropsychologia.2008.11.032
 24. Schneider BA, Pichora-Fuller MK. Implications of perceptual deterioration for cognitive aging research. In: Craik FIM, Salthouse TA, editors. *The Handbook of Aging and Cognition 2nd Edn.* Mahwah, NJ: Erlbaum. (2000). p. 155–219.
 25. Mattay VS, Fera F, Tessitore A, Hariri AR, Berman KF, Weinberger DR. Neurophysiological correlates of age-related changes in working memory capacity. *Neurosci Lett.* (2006) 392:32–7. doi: 10.1016/j.neulet.2005.09.025
 26. Park DC, Polk TA, Park R, Minear M, Savage A, Smith MR. Aging reduces neural specialization in ventral visual cortex. *Proc Natl Acad Sci USA.* (2004) 101:13091–5. doi: 10.1073/pnas.0405148101
 27. Baltes PB, Lindenberger U. Emergence of a powerful connection between sensory and cognitive functions across the adult life span: a new window to the study of cognitive aging? *Psychol Aging* (1997) 12:12–21. doi: 10.1037/0882-7974.12.1.12
 28. Li KZH, Lindenberger U. Relations between aging sensory/sensorimotor and cognitive functions. *Neurosci Biobehav Rev.* (2002) 26:777–83. doi: 10.1016/S0149-7634(02)00073-8
 29. de Frias CM, Dixon RA, Strauss E. Structure of four executive functioning tests in healthy older adults. *Neuropsychology* (2006) 20:206–14. doi: 10.1037/0894-4105.20.2.206
 30. Miyake A, Friedman NP, Emerson MJ, Witzki AH, Howerter A, Wagner T. The unity and diversity of executive functions and their contributions to complex “frontal lobe” tasks: a latent variable analysis. *Cogn Psychol.* (2000) 41:49–100. doi: 10.1006/cogp.1999.0734
 31. Andrews-Hanna JR, Snyder AZ, Vincent JL, Lustig C, Head D, Raichle ME, et al. Disruption of large-scale brain systems in advanced aging. *Neuron* (2007) 56:924–235. doi: 10.1016/j.neuron.2007.10.038
 32. Sambataro F, Murty VP, Callicott JH, Tan H-Y, Das S, Weinberger DR, et al. Age-related alterations in default mode network: impact on working memory performance. *Neurobiol Aging* 31:839–52. doi: 10.1016/j.neurobiolaging.2008.05.022
 33. Marstaller L, Williams M, Rich A, Savage G, Burianová H. Aging and large-scale functional networks: white matter integrity, gray matter volume, and functional connectivity in the resting state. *Neuroscience* (2015) 290:369–78. doi: 10.1016/j.neuroscience.2015.01.049
 34. Grady C. The cognitive neuroscience of aging. *Nat Rev Neurosci.* (2012) 13:491–505. doi: 10.1038/nrn3256
 35. Reuter-Lorenz PA, Park DC. How does it STAC up? Revisiting the scaffolding theory of aging and cognition. *Neuropsychol Rev.* (2014) 24:355–70. doi: 10.1007/s11065-014-9270-9
 36. Lustig C, Shah P, Seidler R, Reuter-Lorenz PA. Aging, training, and the brain: a review and future directions. *Neuropsychol Rev.* (2009) 19:504–22. doi: 10.1007/s11065-009-9119-9
 37. Hertzog C, Kramer AF, Wilson RS, Lindenberger U. Enrichment effects on adult cognitive development can the functional capacity of older adults be preserved and enhanced? *Psychol Sci Public Interest* (2008) 9:1–65. doi: 10.1111/j.1539-6053.2009.01034.x
 38. Karbach J, Verhaeghen P. Making working memory work: a meta-analysis of executive-control and working memory training in older adults. *Psychol Sci.* (2014) 25:2027–37. doi: 10.1177/0956797614548725
 39. Ball K, Berch DB, Helmers KF, Jobe JB, Leveck MD, Marsiske M, et al. Effects of cognitive training interventions with older adults—a randomized controlled trial. *J Am Med Assoc.* (2002) 288:2271–81. doi: 10.1001/jama.288.18.2271
 40. Bherer L, Kramer AF, Peterson MS, Colcombe S, Erickson K, Becic E. Training effects on dual-task performance: Are there age-related differences in plasticity of attentional control? *Psychol Aging* 20:695–709. doi: 10.1037/0882-7974.20.4.695
 41. Bherer L, Kramer AF, Peterson MS, Colcombe S, Erickson K, Becic E. Testing the limits of cognitive plasticity in older adults: application to attentional control. *Acta Psychol.* (2006) 123:261–78. doi: 10.1016/j.actpsy.2006.01.005
 42. Dahlin E, Neely AS, Larsson A, Backman L, Nyberg L. Transfer of learning after updating training mediated by the striatum. *Science* (2008) 320:1510–2. doi: 10.1126/science.1155466
 43. Karbach J, Kray J. How useful is executive control training: age differences in near and far transfer of task-switching training? *Dev Sci.* (2009) 12:978–90. doi: 10.1111/j.1467-7687.2009.00846.x

44. Persson J, Reuter-Lorenz PA. Gaining control training executive function and far transfer of the ability to resolve interference. *Psychol Sci.* (2008) 19:881–8. doi: 10.1111/j.1467-9280.2008.02172.x
45. Kramer AF, Larish JF, Strayer DL. Training for attentional control in dual task settings: a comparison of young and old adults. *J Exp Psychol Appl.* (1995) 1:50–76.
46. Lussier M, Bugaiska A, Bherer L. Specific transfer effects following variable priority dual-task training in older adults. *Restor Neurol Neurosci.* 35:237–50. doi: 10.3233/RNN-150581
47. Silsupadol P, Siu KC, Shumway-Cook A, Woollacott MH. Training of balance under single- and dual-task conditions in older adults with balance impairment. *Phys Ther.* (2006) 86:269–81. doi: 10.1093/ptj/86.2.269
48. Li KZH, Krampe RT, Bondar A. An ecological approach to studying aging and dual-task performance. In: Engle RW, Sedek G, Von hecker U, McIntosh DN, editors. *Cognitive Limitations in Aging and Psychopathology: Attention, Working Memory, and Executive Functions.* Cambridge: Cambridge University Press (2005). p. 190–218. doi: 10.1017/CBO9780511720413.009
49. Salthouse TA, Hambrick DZ, Lukas KE, Dell TC. Determinants of adult age differences on synthetic work performance. *J Exp Psychol Appl.* (1996) 2:305–29.
50. Belleville S, Bherer L. Biomarkers of cognitive training effects in aging. *Curr. Transl. Geriatr. Exp. Gerontol. Rep.* 1:104–10. doi: 10.1007/s13670-012-0014-5
51. Lövdén M, Bodammer NC, Kühn S, Kaufmann J, Schutze H, Tempelmann C, et al. Experience-dependent plasticity of white-matter microstructure extends into old age. *Neuropsychologia* (2010) 48:3878–83. doi: 10.1016/j.neuropsychologia.2010.08.026
52. Erickson KI, Colcombe SJ, Wadhwa R, Bherer L, Peterson MS, Scalf PE, et al. Training-induced functional activation changes in dual-task processing: an fMRI study. *Cereb Cortex* (2007) 17:192–204. doi: 10.1093/cercor/bhj137
53. Erickson KI, Colcombe SJ, Wadhwa R, Bherer L, Peterson MS, Scalf PE, et al. Training-induced plasticity in older adults: effects of training on hemispheric asymmetry. *Neurobiol. Aging* (2007) 28:272–83. doi: 10.1016/j.neurobiolaging.2005.12.012
54. Lampit A, Hallock H, Suo C, Naismith SL, Valenzuela M. Cognitive training-induced short-term functional and long-term structural plastic change is related to gains in global cognition in healthy older adults: a pilot study. *Front Aging Neurosci.* (2015) 7:14. doi: 10.3389/fnagi.2015.00014
55. Bherer L, Erickson KI, Liu-Ambrose T. Physical exercise and brain functions in older adults. *J Aging Res.* 2013:197326. doi: 10.1155/2013/197326
56. Colcombe S, Kramer AF. Fitness effects on the cognitive function of older adults: a meta-analytic study. *Psychol Sci.* (2003) 14:125–30. doi: 10.1111/1467-9280.t01-1-01430
57. Albinet CT, Boucard G, Bouquet CA, Audiffren M. Increased heart rate variability and executive performance after aerobic training in the elderly. *Eur J Appl Physiol.* (2010) 109:617–24. doi: 10.1007/s00421-010-1393-y
58. Dustman RE, Ruhlring RO, Russell EM, Shearer DE, Bonekat HW, Shigeoka JW, et al. Aerobic exercise training and improved neuropsychological function of older individuals. *Neurobiol. Aging.* (1984) 5:35–42.
59. Kramer AF, Hahn S, Cohen NJ, Banich MT, McAuley E, Harrison CR, et al. Ageing, fitness and neurocognitive function. *Nature* (1999) 400:418–9. doi: 10.1038/22682
60. Singh MAF, Gates N, Saigal N, Wilson GC, Meiklejohn J, Valenzuela M. The Study of Mental and Resistance Training (SMART) study – resistance training and/or cognitive training in mild cognitive impairment: a randomized, double-blind, double-sham controlled trial. *J Am Med Assoc.* (2014) 311:873–80. doi: 10.1016/j.jama.2014.09.010
61. Colcombe SJ, Kramer AF, Erickson KI, Scalf P, McAuley E, Cohen NJ, et al. Cardiovascular fitness, cortical plasticity, and aging. *Proc Natl Acad Sci USA.* (2004) 101:3316–21. doi: 10.1073/pnas.0400266101
62. Colcombe SJ, Erickson KI, Scalf PE, Kim JS, Prakash R, McAuley E, et al. Aerobic exercise training increases brain volume in aging humans. *J Gerontol A Biol Sci Med Sci.* (2006) 61:1166–70. doi: 10.1093/gerona/61.11.1166
63. Voss MW, Heo S, Prakash RS, Erickson KI, Alves H, Chaddock L, et al. The influence of aerobic fitness on cerebral white matter integrity and cognitive function in older adults: results of a one-year exercise intervention. *Hum Brain Mapp.* (2013) 34:2972–85. doi: 10.1002/hbm.22119
64. Erickson KI, Hillman CH, Kramer AF. Physical activity, brain, and cognition. *Curr Opin Behav Sci.* (2015) 4:27–32. doi: 10.1016/j.cobeha.2015.01.005
65. Voss MW, Erickson KI, Prakash RS, Chaddock L, Kim JS, Alves H, et al. Neurobiological markers of exercise-related brain plasticity in older adults. *Brain Behav Immun.* (2013) 28:90–9. doi: 10.1016/j.bbi.2012.10.021
66. Zhu X, Yin S, Lang M, He R, Li J. The more the better? A meta-analysis on effects of combined cognitive and physical intervention on cognition in healthy older adults. *Ageing Res Rev.* (2016) 31:67–79. doi: 10.1016/j.arr.2016.07.003
67. Rahe J, Petrelli A, Kaesberg S, Fink GR, Kessler J, Kalbe E. Effects of cognitive training with additional physical activity compared to pure cognitive training in healthy older adults. *Clin Interv Aging* (2015) 10:297–310. doi: 10.2147/CIA.S74071
68. Desjardins-Crépeau L, Berryman N, Fraser SA, Vu TTM, Kergoat M-J, Li KZH, et al. Effects of combined physical and cognitive training on fitness and neuropsychological outcomes in healthy older adults. *Clin Interv Aging* (2016) 11:1287–99. doi: 10.2147/CIA.S115711
69. Woollacott M, Shumway-Cook A. Attention and the control of posture and gait: a review of an emerging area of research. *Gait Posture* (2002) 16:1–14. doi: 10.1016/S0966-6362(01)00156-4
70. Brown LA, Sleik RJ, Polych MA, Gage WH. Is the prioritization of postural control altered in conditions of postural threat in younger and older adults? *J Gerontol Med Sci.* (2002) 57:M785–92. doi: 10.1093/gerona/57.12.M785
71. Brown LA, Shumway-Cook A, Woollacott MH. Attentional demands and postural recovery: the effects of aging. *J Gerontol Med Sci.* (1999) 54A:165–71.
72. Redfern MS, Müller MLTM, Jennings JR, Furman JM. Attentional dynamics in postural control during perturbations in young and older adults. *J Gerontol Biol Sci.* (2002) 57:B298–303. doi: 10.1093/gerona/57.8.B298
73. Maylor EA, Wing AM. Age differences in postural stability are increased by additional cognitive demands. *J Gerontol Psychol Sci.* (1996) 51B:P143–54.
74. Li KZH, Lindenberger U, Freund AM, Baltes PB. Walking while memorizing: age-related differences in compensatory behavior. *Psychol Sci.* (2001) 12:230–7. doi: 10.1111/1467-9280.00341
75. Lindenberger U, Marsiske M, Baltes PB. Memorizing while walking: increase in dual-task costs from young adulthood to old age. *Psychol Aging* (2000) 15:417–36. doi: 10.1037/0882-7974.15.3.417
76. Huxhold O, Li SC, Schmiedek F, Lindenberger U. Dual-tasking postural control: aging and the effects of cognitive demand in conjunction with focus of attention. *Brain Res Bull.* (2006) 69:294–305. doi: 10.1016/j.brainresbull.2006.01.002
77. Lövdén M, Schaefer S, Pohlmeier AA, Lindenberger U. Walking variability and working-memory load in aging: a dual-process account relating cognitive control to motor control performance. *J Gerontol Series B Psychol Sci Soc Sci.* (2008) 63:P121–8. doi: 10.1093/geronb/63.3.P121
78. Nieborowska V, Lau ST, Campos J, Pichora-Fuller MK, Novak A, Li KZH. Effects of age on dual-task walking while listening. *J Motor Behav.* (2018). doi: 10.1080/00222895.2018.1498318
79. Bruce H, Aponte D, St-Onge N, Phillips N, Gagné J-P, Li KZH. The effects of age and hearing loss on dual-task balance and listening. *J Gerontol Psychol Sci B* (2017). doi: 10.1093/geronb/gbx047. [Epub ahead of print].
80. Lau ST, Pichora-Fuller MK, Li KZH, Singh G, Campos J. Effects of hearing loss on dual-task performance in an audiovisual virtual reality simulation of listening while walking. *J Am Acad Audiol.* 27:567–87. doi: 10.3766/jaaa.15115
81. Rosano C, Aizenstein HJ, Studenski S, Newman AB. A regions-of-interest volumetric analysis of mobility limitations in community-dwelling older adults. *J Gerontol Med Sci.* (2007) 62:1048–55. doi: 10.1093/gerona/62.9.1048
82. Rosano C, Bennett DA, Newman AB, Venkatraman V, Yaffe K, Harris T, et al. Patterns of focal gray matter atrophy are associated with bradykinesia and gait disturbances in older adults. *J Gerontol Series A* (2012) 67:957–62. doi: 10.1093/gerona/67.9.957
83. Rosenberg-Katz K, Herman T, Jacob Y, Mirelman A, Giladi N, Hendler T, et al. Fall risk is associated with amplified functional connectivity of the central executive network in patients with Parkinson's disease. *J Neurol.* (2015) 262:2448–56. doi: 10.1007/s00415-015-7865-6
84. Wajda DA, Mirelman A, Hausdorff JM, Sosnoff JJ. Intervention modalities for targeting cognitive-motor interference in individuals

- with neurodegenerative disease: a systematic review. *Expert Rev Neurother.* (2017) 17:251–61. doi: 10.1080/14737175.2016.1227704
85. Moscufo N, Guttmann CR, Meier D, Csapo I, Hildenbrand PG, Healy BC, et al. Brain regional lesion burden and impaired mobility in the elderly. *Neurobiol Aging* (2009) 32:646–54. doi: 10.1016/j.neurobiolaging.2009.04.010
 86. Srikanth V, Phan TG, Chen J, Beare R, Stapleton JM, Reutens DC. The location of white matter lesions and gait-a voxel-based study. *Ann Neurol.* (2010) 67:265–9. doi: 10.1002/ana.21826
 87. Bolandzadeh N, Liu-Ambrose T, Aizenstein H, Harris T, Launer L, Yaffe K, et al. Pathways linking regional hyperintensities in the brain and slower gait. *NeuroImage* (2014) 99:7–13. doi: 10.1016/j.neuroimage.2014.05.017
 88. Fleischman DA, Yang J, Arfanakis K, Arvanitakis Z, Leurgans SE, Turner AD, et al. Physical activity, motor function, and white matter hyperintensity burden in healthy older adults. *Neurology* 84:1294–300. doi: 10.1212/WNL.0000000000001417
 89. Ezzati A, Katz MJ, Lipton ML, Lipton RB, Verghese J. The association of brain structure with gait velocity in older adults: a quantitative volumetric analysis of brain MRI. *Neuroradiology* (2015) 57:851–61. doi: 10.1007/s00234-015-1536-2
 90. Baezner H, Blahak C, Poggesi A, Pantoni L, Inzitari D, Chabriat H, et al. Association of gait and balance disorders with age-related white matter changes: the LADIS study. *Neurology* 70:935–42. doi: 10.1212/01.wnl.0000305959.46197.e6
 91. Inzitari D, Simoni M, Pracucci G, Poggesi A, Chabriat H, Langhorne P. Risk of rapid global functional decline in elderly patients with severe cerebral age-related white matter changes. *Arch Intern Med.* (2007) 167:81–8. doi: 10.1001/archinte.167.1.81
 92. Bruijn SM, Impe AV, Duysens J, Swinnen SP. White matter microstructural organization and gait stability in older adults. *Front Aging Neurosci.* (2014) 6:104. doi: 10.3389/fnagi.2014.00104
 93. Holtzer R, Epstein N, Mahoney JR, Izzetoglu M, Blumen HM. Neuroimaging of mobility in aging: a targeted review. *J Gerontol Series A Biol Sci Med Sci.* (2014) 69:1375–88. doi: 10.1093/gerona/glu052
 94. Leone C, Feys P, Moumjdjian L, D'Amico E, Zappia M, Patti F. Cognitive-motor dual-task interference. A systematic review of neural correlates. *Neurosci Biobeh Rev.* (2017) 75:348–60. doi: 10.1016/j.neubiorev.2017.01.010
 95. Miyai I, Tanabe HC, Sase I, Eda H, Oda I, Konishi I, et al. Cortical mapping of gait in humans: a near-infrared spectroscopic topography study. *Neuroimage* (2001) 14:1186–92. doi: 10.1006/nimg.2001.0905
 96. Maitan I, Rosenberg-Katz K, Jacob Y, Giladi N, Deutsch JE, Hausdorff JM, et al. Altered brain activation in complex walking conditions in patients with Parkinson's disease. *Parkinsonism Relat Disord.* (2016) 25:91–6. doi: 10.1016/j.parkreldis.2016.01.025
 97. Yuan J, Blumen HM, Verghese J, Holtzer R. Functional connectivity associated with gait velocity during walking and walking-while-talking in aging: a resting-state fMRI study. *Hum Brain Mapp.* (2015) 36:1484–93. doi: 10.1002/hbm.22717
 98. Arenth PM, Ricker JH, Schultheis MT. Applications of functional near-infrared spectroscopy (fNIRS) to neurorehabilitation of cognitive disabilities. *Clin Neuropsychol.* 21:38–57. doi: 10.1080/13854040600878785
 99. Huppert TJ, Hoge RD, Diamond SG, Franceschini MA, Boas DA. A temporal comparison of BOLD, ASL, and NIRS hemodynamic responses to motor stimuli in adult humans. *Neuroimage* 29:368–82. doi: 10.1016/j.neuroimage.2005.08.065
 100. Holtzer R, Mahoney JR, Izzetoglu M, Onaral B, Verghese J. fNIRS study of walking and walking while talking in young and old individuals. *J Gerontol Med Sci.* (2011) 66:879–87. doi: 10.1093/gerona/66:10.068
 101. Holtzer R, Mahoney JR, Izzetoglu M, Wang C, England S, Verghese J. Online fronto-cortical control of simple and attention-demanding locomotion in humans. *Neuroimage* (2015) 112:152–9. doi: 10.1016/j.neuroimage.2015.03.002
 102. Mirelman A, Maitan I, Bernard-Elazari H, Nieuwhof F, Reelick M, Giladi N, et al. Increased frontal brain activation during walking while dual-tasking: an fNIRS study in healthy young adults. *J NeuroEng Rehab.* (2014) 11:1–7. doi: 10.1186/1743-0003-11-85
 103. Fraser SA, Dupuy O, Pouliot P, Lesage F, Bherer L. Comparable cerebral oxygenation patterns in younger and older adults during dual-task walking with increasing load. *Front Aging Neurosci.* (2016) 8:204. doi: 10.3389/fnagi.2016.00240
 104. Beurskens R, Helmich I, Rein R, Bock O. Age-related changes in prefrontal activity during walking in dual-task situations: a fNIRS study. *Int J Psychophysiol.* (2014) 92:122–8. doi: 10.1016/j.ijpsycho.2014.03.005
 105. Lin CC, Barker JW, Sparto PJ, Furman JM, Huppert TJ. Functional near-infrared spectroscopy (fNIRS) brain imaging of multi-sensory integration during computerized dynamic posturography in middle-aged and older adults. *Exp Brain Res.* (2017) 235:1247–56. doi: 10.1007/s00221-017-4893-8
 106. Costa A, Ianez E, Ubeda A, Hortal E, Del-Ama AJ, Gil-Agudo A, et al. Decoding the attentional demands of gait through EEG Gamma band features. *PLoS ONE* 11:e0154136. doi: 10.1371/journal.pone.0154136
 107. Kaiser J, Lutzenberger W. Human gamma-band activity: a window to cognitive processing. *Neuroreport* (2005) 16:207–11. doi: 10.1097/00001756-200502280-00001
 108. Little CE, Woollacott M. EEG measures reveal dual-task interference in postural performance in young adults. *Exp Brain Res.* 233:27–37. doi: 10.1007/s00221-014-4111-x
 109. Quant S, Adkin AL, Staines WR, Maki BE, McIlroy WE. The effect of a concurrent cognitive task on cortical potentials evoked by unpredictable balance perturbations. *BMC Neurosci.* 5:18. doi: 10.1186/1471-2202-5-18
 110. Wollesen B, Voelcker-Rehage C. Training effects on motor-cognitive dual-task performance in older adults. *Eur Rev Aging Phys Act.* 11:5–24. doi: 10.1007/s11556-013-0122-z
 111. Silsupadol P, Lugade V, Shumway-Cook A, Van Donkelaar P, Chou L-S, Mayr U, et al. Training-related changes in dual-task walking performance of elderly persons with balance impairment: a double-blind, randomized controlled trial. *Gait Posture* (2009) 29:634–9. doi: 10.1016/j.gaitpost.2009.01.006
 112. Wollesen B, Mattes K, Schulz S, Bischoff LL, Seydell L, Bell JW, et al. Effects of dual-task management and resistance training on gait performance in older individuals: a randomized controlled trial. *Front Aging Neurosci.* (2017) 9:415. doi: 10.3389/fnagi.2017.00415
 113. Wongcharoen S, Sungkarat S, Munkhetvit P, Lugade V, Silsupadol P. Home-based interventions improve trained, but not novel, dual-task balance performance in older adults: a randomized controlled trial. *Gait Posture* (2017) 52:147–52. doi: 10.1016/j.gaitpost.2016.11.036
 114. Li KZH, Roudaia E, Lussier M, Bherer L, Leroux A, McKinley P. Benefits of cognitive dual-task training on balance performance in healthy older adults. *J Gerontol Series A Biol Sci Med Sci.* (2010) 65:1344–52. doi: 10.1093/gerona/gdq151
 115. Verghese J, Mahoney J, Ambrose A, Wang C, Holtzer R. Effect of cognitive remediation on gait in sedentary seniors. *J Gerontol Series A Biol Sci Med Sci.* (2010) 65A:1338–43. doi: 10.1093/gerona/gdq127
 116. Smith-Ray RL, Hughes SL, Prohaska TR, Little DM, Jurivich DA, Hedeker D. Impact of cognitive training on balance and gait in older adults. *J Gerontol B Psychol Sci Soc Sci.* (2015) 70:357–66. doi: 10.1093/geronb/gbt097
 117. Milman U, Atias H, Weiss A, Mirelman A, Hausdorff JM. Can cognitive remediation improve mobility in patients with Parkinson's disease? findings from a 12 week pilot study. *J Parkinsons. Dis.* (2014) 4:37–44. doi: 10.3233/JPD-130321
 118. Auriel E, Hausdorff JM, Herman T, Simon ES, Giladi N. Effects of methylphenidate on cognitive function and gait in patients with Parkinson's disease: a pilot study. *Clin Neuropharmacol.* (2006) 29:15–7. doi: 10.1097/00002826-200601000-00005
 119. Ben-Itzhak R, Giladi N, Guendlinger L, Hausdorff JM. Can methylphenidate reduce fall risk in community living older adults? A double blind, single-dose cross-over study. *J Am Ger Soc.* (2008) 56:695–700. doi: 10.1111/j.1532-5415.2007.01623.x
 120. Henderson EJ, Lord SR, Brodie MA, Gaunt DM, Lawrence AD, Ben-Shlomo Y. Rivastigmine for gait stability in patients with parkinson's disease (ReSPOND): a randomized, double-blind, placebo-controlled, phase 2 trial. *Lancet Neurol.* (2016) 15:249–58. doi: 10.1016/S1474-4422(15)00389-0
 121. Segev-Jacobovskii O, Herman T, Yogev-Seligmann G, Mirelman A, Giladi N, Hausdorff JM. The interplay between gait, falls and cognition: can cognitive therapy reduce fall risk? *Exp Rev Neurother.* (2011) 11:1057–75. doi: 10.1586/ern.11.69

122. Dagan M, Herman T, Harrison R, Zhou J, Giladi N, Ruffini G, et al. Multitarget transcranial direct current stimulation for freezing of gait in Parkinson's disease. *Mov Dis.* (2018) 33:642–6. doi: 10.1002/mds.27300
123. Manor B, Zhou J, Jordan A, Zhang J, Fang J, Pascual-Leone A. Reduction of dual-task costs by noninvasive modulation of prefrontal activity in healthy elders. *J Cogn Neurosci.* (2016) 28:275–81. doi: 10.1162/jocn_a_00897
124. Manor B, Zhou J, Harrison R, Lo O-Y, Trivison TG, Hausdorff JM, et al. Transcranial direct current stimulation may improve cognitive-motor function in functionally limited older adults. *Neurorehabil Neural Repair* (2018) 32:788–98. doi: 10.1177/1545968318792616
125. Zhou J, Hao Y, Wang Y, Jordan A, Pascual-Leone A, Zhang J, et al. Transcranial direct current stimulation (tDCS) reduces the cost of performing a cognitive task on gait and postural control. *Eur J Neurosci.* (2014) 39:1343–8. doi: 10.1111/ejn.12492
126. Fraser SA, Li KZH, Berryman N, Desjardins-Cr peau L, Lussier M, Vadaga K, et al. Does combined physical and cognitive training improve dual-task balance and gait outcomes in sedentary older adults? *Front Hum Neurosci.* (2017) 10:688. doi: 10.3389/fnhum.2016.00688
127. Pothier K, Gagnon C, Fraser SA, Lussier M, Desjardins-Cr peau L, Berryman N, et al. A comparison of the impact of physical exercise, cognitive training and combined intervention on spontaneous walking speed in older adults. *Aging Clin Exp Res.* (2018) 30:921–5. doi: 10.1007/s40520-017-0878-5
128. Lai L, Bruce H, Bherer L, Lussier M, Li KZH. Comparing the transfer effects of simultaneous and sequential combined aerobic exercise and cognitive training in older adults. *J Cogn Enhanc.* (2017) 1:478–90. doi: 10.1007/s41465-017-0052-1
129. Bruce H, Lai L, Bherer L, Lussier M, St-Onge N, Li KZH. The effect of simultaneously and sequentially delivered cognitive and aerobic training on mobility among older adults with hearing loss. *Gait Posture* (in press).
130. Jehu D, Paquet N, Lajoie Y. Balance and mobility training with or without concurrent cognitive training does not improve posture, but improves reaction time in healthy older adults. *Gait Posture* (2017) 52:227–32. doi: 10.1016/j.gaitpost.2016.12.006
131. Mirelman A, Rochester L, Maidan I, Del Din S, Nieuwhof F, Abbruzzese G. Addition of a non-immersive virtual reality component to treadmill training to reduce fall risk in older adults (V-TIME): a randomised controlled trial. *Lancet* (2016) 388:1170–82. doi: 10.1016/S0140-6736(16)31325-3
132. Maidan I, Rosenberg-Katz K, Jacob Y, Giladi N, Deutsch JE, Hausdorff JM, et al. Disparate effects of training on brain activation in Parkinson's disease. *Neurology.* (2017) 89:1804–10. doi: 10.1212/WNL.0000000000004576
133. Maidan I, Nieuwhof F, Bernad-Elazari H, Bloem B, Giladi N, Hausdorff JM, et al. Evidence of differential effects of 2 forms of exercise on prefrontal plasticity during walking in parkinson's disease. *Neurorehab Neural Repair* (2018) 32:200–8. doi: 10.1177/1545968318763750

Conflict of Interest Statement: The authors declare that the research was conducted in the absence of any commercial or financial relationships that could be construed as a potential conflict of interest.

Copyright © 2018 Li, Bherer, Mirelman, Maidan and Hausdorff. This is an open-access article distributed under the terms of the Creative Commons Attribution License (CC BY). The use, distribution or reproduction in other forums is permitted, provided the original author(s) and the copyright owner(s) are credited and that the original publication in this journal is cited, in accordance with accepted academic practice. No use, distribution or reproduction is permitted which does not comply with these terms.