



OPEN ACCESS

APPROVED BY
Frontiers Editorial Office,
Frontiers Media SA, Switzerland

*CORRESPONDENCE
Frontiers Production Office
✉ production.office@frontiersin.org

RECEIVED 25 June 2024
ACCEPTED 25 June 2024
PUBLISHED 03 July 2024

CITATION
Frontiers Production Office (2024) Erratum:
Resting state functional connectivity of the rat
claustrum. *Front. Neuroanat.* 18:1454746.
doi: 10.3389/fnana.2024.1454746

COPYRIGHT
© 2024 Frontiers Production Office. This is an
open-access article distributed under the
terms of the [Creative Commons Attribution
License \(CC BY\)](#). The use, distribution or
reproduction in other forums is permitted,
provided the original author(s) and the
copyright owner(s) are credited and that the
original publication in this journal is cited, in
accordance with accepted academic practice.
No use, distribution or reproduction is
permitted which does not comply with these
terms.

Erratum: Resting state functional connectivity of the rat claustrum

Frontiers Production Office*

Frontiers Media SA, Lausanne, Switzerland

KEYWORDS

anterior cingulate cortex, caudate, cortex, forebrain, insula, putamen, striatum, top-down

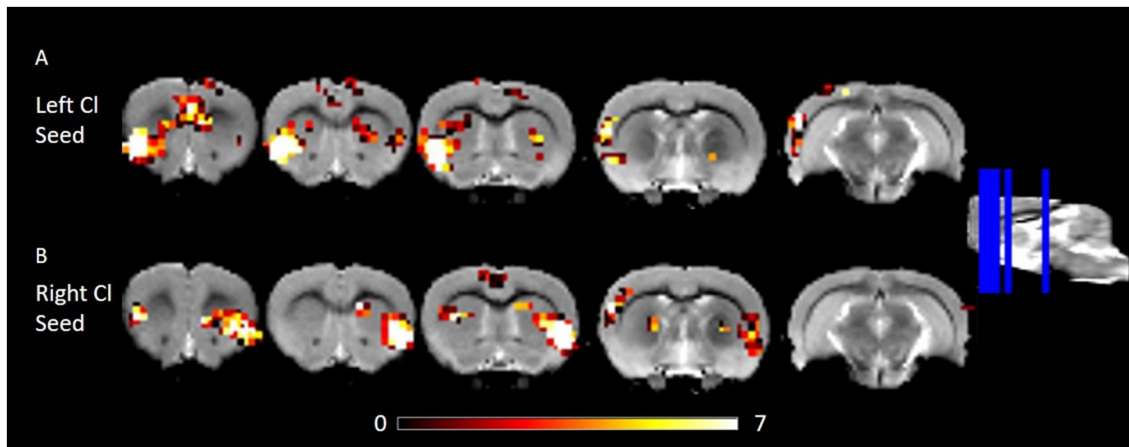
An Erratum on

Resting state functional connectivity of the rat claustrum

by Krimmel, S. R., Qadir, H., Hesselgrave, N., White, M. G., Reser, D. H., Mathur, B. N., and Seminowicz, D. A. (2019). *Front. Neuroanat.* 13:22. doi: 10.3389/fnana.2019.00022

Due to a production error, there was a mistake in [Figure 2](#) as published. The panels “A: Left Cl Seed” and “B: Right Cl Seed” were not included in the figure. The corrected [Figure 2](#) appears below. The publisher apologizes for this mistake.

The original article has been updated.

**FIGURE 2**

RSFC of the left and right Cl showing connectivity to frontal and posterior cortices. **(A)** RSFC of the left Cl. **(B)** RSFC of the right Cl. Data were thresholded at $p < 0.001$ followed by FWE cluster correction. Cl, claustrum; RSFC, resting state function connectivity.