



# Manipulating neuronal circuits with endogenous and recombinant cell-surface tethered modulators

Mandë Holford<sup>1</sup>, Sebastian Auer<sup>2</sup>, Martin Laqua<sup>2</sup> and Ines Ibañez-Tallon<sup>2\*</sup>

<sup>1</sup> York College and The Graduate Center, The American Museum of Natural History, The City University of New York, New York, NY, USA

<sup>2</sup> Max-Delbrück Center for Molecular Medicine, Berlin, Germany

## Edited by:

William Wisden, Imperial College, UK

## Reviewed by:

Peer Wulff, University of Aberdeen, UK

Sheriar Hormuzdi, University of

Dundee, UK

William Wisden, Imperial College, UK

## \*Correspondence:

Ines Ibañez-Tallon, Molecular

Neurobiology Group, Max-Delbrück

Center for Molecular Medicine,

Helmoltz Gemeinschaft, Robert-Rössle

Str. 10, Berlin-Buch, Berlin 13125,

Germany.

e-mail: ibanezi@mdc-berlin.de

Neuronal circuits depend on the precise regulation of cell-surface receptors and ion channels. An ongoing challenge in neuroscience research is deciphering the functional contribution of specific receptors and ion channels using engineered modulators. A novel strategy, termed “tethered toxins,” was recently developed to characterize neuronal circuits using the evolutionary derived selectivity of venom peptide toxins and endogenous peptide ligands, such as lynx1 prototoxins. Herein, the discovery and engineering of cell-surface tethered peptides is reviewed, with particular attention given to their cell-autonomy, modular composition, and genetic targeting in different model organisms. The relative ease with which tethered peptides can be engineered, coupled with the increasing number of neuroactive venom toxins and ligand peptides being discovered, imply a multitude of potentially innovative applications for manipulating neuronal circuits and tissue-specific cell networks, including treatment of disorders caused by malfunction of receptors and ion channels.

**Keywords:** tethered-toxins, cell-surface modulators, lynx1, receptors, ion channels

## INTRODUCTION

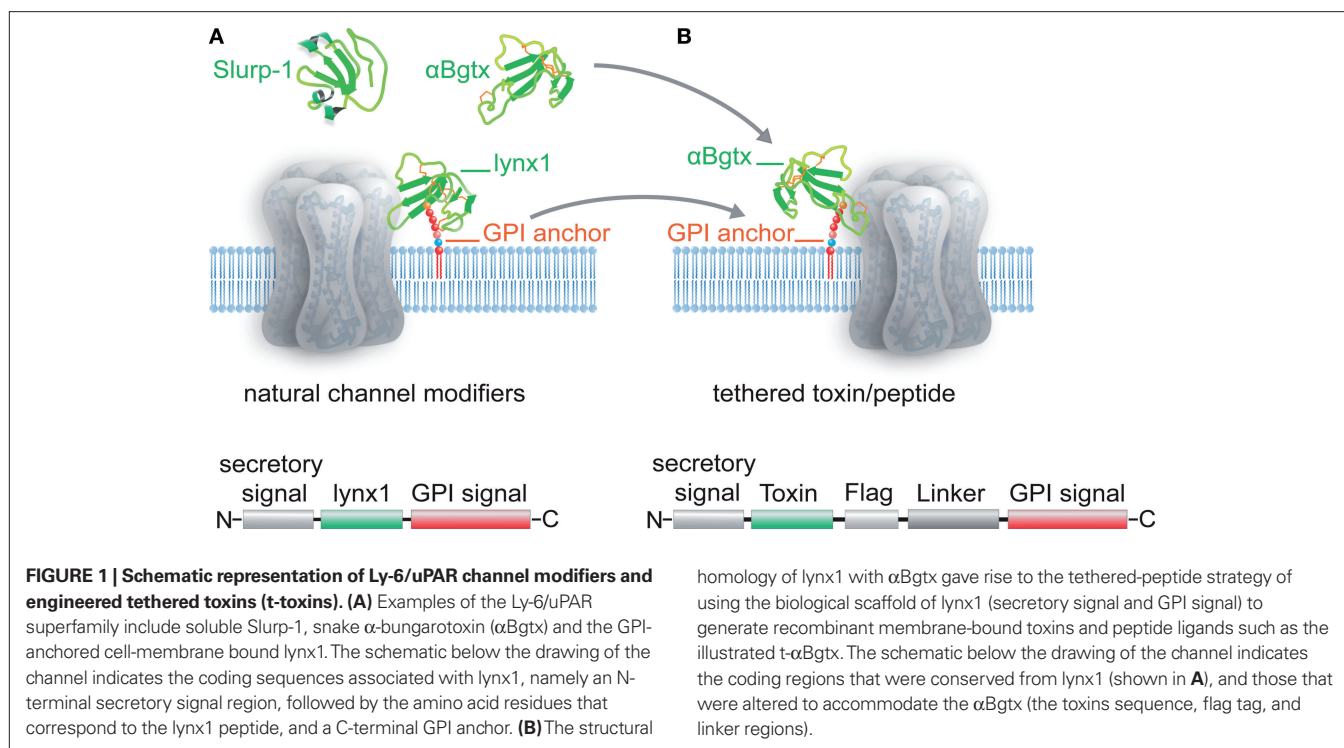
Understanding complex processes such as neuronal activity or cell signaling malfunctions that result in human disorders or diseases relies on extensive knowledge about the function, structure and precision of ion channels, receptors and modulators. As a result of this, ion channels are at present the third biggest target class in drug discovery; yet still remain underexploited as drug targets. Recent reviews describe the increasing interest in peptide venom toxins for the development of drug therapies directed towards ion channels and receptors (Blumenthal and Seibert, 2003; Phui Yee et al., 2004; Lynch et al., 2006; Han et al., 2008; Twede et al., 2009). Specific areas in which peptide toxins have demonstrated their potential include Alzheimer’s disease (candoxin) (Nirathanan et al., 2002), chronic pain (MVIIA) (Miljanich, 2004) and myasthenic autoimmune response ( $\alpha$ -Bgtx) (Drachman, 1981; Mebs, 1989). For instance, snake neurotoxins bind to nicotinic acetylcholine receptors (nAChRs) with affinities within the pico and nanomolar range (Chiappinelli, 1991), which indicates that these would be among the best probes for investigating potential therapeutics that affect nAChR activity. The unique homologies of endogenous lynx1 prototoxins with venom toxins provided a biological scaffold for developing recombinant molecules to selectively modulate ion channels and receptors. Thus, based on the characteristics and mode of action of lynx1 cell-surface modulators, new classes of “tethered toxins” and “tethered ligands” were created as probes to characterize ion channels and receptors (Ibañez-Tallon et al., 2004; Fortin et al., 2009; Auer et al., 2009; Stürzebecher et al., 2009). Tethering peptide toxins or ligands close to their point of activity in the cell plasma membrane provides a new approach to the study of cell networks and neuronal circuits, as it allows selective targeting of specific cell populations, enhances the working concentration

of the ligand or blocker peptide, and permits the engineering of a large variety of t-peptides (e.g., including use of fluorescent markers, viral vectors and point mutation variants).

This focused review describes the identification of lynx-1 and related endogenous cell surface modulators, the development of the t-peptide technology, and the application of the t-peptide strategy to basic research, cell-based therapies, and drug discovery.

## ENDOGENOUS CELL-SURFACE MODULATORS OF LIGAND-GATED ION CHANNELS: THE LY6 SUPERFAMILY

Cell-surface receptors and ion channels are modulated by a rich variety of peptide neurotransmitters, hormones and ligands, but there are few examples of membrane-anchored modulators in nature. The Ly6 superfamily which includes lynx1- and slurp-1 cholinergic modulators, elapid snake venom toxins, and Ly6 molecules of the immune system, constitutes a unique class of short proteins that are either tethered to the cell surface via a glycosylphosphatidylinositol (GPI) anchor, like lynx1, or secreted as venom toxins (Figure 1). Members of this superfamily share the characteristic 8–10 cysteine motif that determines their compact three-finger structure. Examples of the GPI-anchor subgroup include molecules of the immune system such as CD59 (Davies et al., 1989), ly6A-E (Rock et al., 1989), ly6G (Mallya et al., 2006), and ly6K (de Nooij-van Dalen et al., 2003), the neuronal proteins lypd6 (Darvas et al., 2009), ly6H (Dessaud et al., 2006) and the urokinase plasminogen activator receptor (uPAR) (Blasi and Carmeliet, 2002). Members lacking the GPI-anchor comprise the cholinergic modulators SLURP-1 (Adermann et al., 1999; Chimienti et al., 2003) and SLURP-2 (Tsuji et al., 2003), cobra toxins, and other three finger venom toxins (Tsetlin, 1999) (Figure 1).



### ALLOSTERIC MODULATION OF NACHRS BY Ly6 SUPERFAMILY MOLECULES

Lynx1 was the first identified member of the Ly6 superfamily capable of cell-surface modulatory action on a neurotransmitter receptor (Miwa et al., 1999). Lynx1 assembles and colocalizes with nAChR in the brain (Ibañez-Tallon et al., 2002) and in the lung (Sekhon et al., 2005). nAChRs stably associated with lynx1 are less sensitive to their ligand agonists acetylcholine and nicotine, display more rapid desensitization, and show a shift in the distribution of channel openings toward a faster inactivating species with more uniform, larger amplitude currents (Ibañez-Tallon et al., 2002). These findings, along with studies showing enhanced nicotine-mediated calcium influx and synaptic efficacy in lynx1 null mutant mice, are strong indicators that lynx1 is an allosteric modulator of nAChR function *in vivo* (Miwa et al., 2006). Other lynx-like molecules recently identified have similar properties. Lynx2 and ly6H, which are GPI-anchored to the cell membrane, have been localized to central and peripheral neurons in mice (Dessaud et al., 2006). Functional studies demonstrate that lynx2, but not ly6H, changes the agonist sensitivity and desensitization properties of nAChRs through direct association (Tekinay et al., 2009). Consistent with lynx2 enrichment in neurons that participate in circuits controlling fear and anxiety, lynx2 null mice display increased anxiety-like behaviors due to enhanced nAChR activity (Tekinay et al., 2009). Recently, a third allosteric modulator of nAChRs, named lypd6, has been identified in central neurons. Lypd6 is cell-membrane bound and selectively increases the calcium conductance of nAChRs (Darvas et al., 2009). The lynx1-related secreted ligands SLURP-1 and SLURP-2, also act as neuromodulators of nAChRs and have been linked to skin disorders (Chimienti et al., 2003; Arredondo et al., 2006).

### Ly6 SPECIES DIVERSITY

Lynx1-like molecules are well conserved across species, both in structure and function, suggesting the importance of cell-surface modulators of nicotinic receptors in nature. Examples of Ly6 superfamily species diversity include molecules found in *C. elegans* (Odr-2; Chou et al., 2001), fireflies (Pr-lynx1; Choo et al., 2008), *Drosophila* (Hijazi et al., 2009) and chicken (recently identified prostate stem cell antigen PSCA; Hruska et al., 2009). Pr-lynx1 and PSCA are of particular importance as Pr-lynx1 is the first modulator of nAChRs in an insect species (Choo et al., 2008), and PSCA appears to prevent programmed cell death of neurons by antagonizing nAChRs (Hruska et al., 2009). The lynx1-like family of allosteric modulators of nAChRs constitutes a unique example of cell-surface channel modifiers that have evolved for fine-tuning of neurotransmitter receptor function *in vivo*.

### VENOM PEPTIDE TOXINS: SPECIFIC MODULATORS OF ION CHANNELS AND RECEPTORS

Venom peptide toxins from predatory organisms such as scorpions, snakes and marine cone snails are suitable as agents for use in engineering cell-type specific modulators. Neurotoxins isolated from animal venom are disulfide-rich peptides that have been used extensively to characterize the structure–activity relationships of specific ion channels (ligand or voltage-gated) and cell-surface receptors (Catterall, 1986; Tsetlin, 1999; Norton and Olivera, 2006).  $\alpha$ -bungarotoxin and other  $\alpha$ -neurotoxins from Elapidae and Hydrophidae snakes were used to provide the first identification of nAChRs (Endo and Tamiya, 1991; Hucho et al., 1996; Léna and Changeux, 1998). Similarly,  $\alpha$ - and  $\beta$ -neurotoxins from scorpions have been broadly used to modify voltage-gated sodium channels (VGSC or Na<sub>v</sub>s) by delaying inactivation ( $\alpha$ ) or shifting the

membrane potential dependence ( $\beta$ ) (Zuo and Ji, 2004; Bosmans and Tytgat, 2007). Neuropeptides from venomous marine cone snails (conotoxins) are prolific in their range and specificity for targeting various ion channels and receptors (Terlau and Olivera, 2004; Gowd et al., 2008; Han et al., 2009). As shown in **Table 1**, venom peptide toxins modulate a wide range of molecular targets. Peptide toxins vary in length from 12–30 residues in cone snails to 40–80 residues in toxins from scorpions and snakes. The relatively small size of these polypeptides, coupled with their structural integrity imposed by numerous disulfide bonds, have facilitated their use for investigating ion channels and receptors (Fontecilla-Camps et al., 1988; Pashkov et al., 1988; Tsetlin, 1999; Zhang et al., 2006).

### PEPTIDE TOXINS SPECIFIC FOR nAChR AND VOLTAGE-GATED ION CHANNELS

$\alpha$ -Neuropeptides, which target nAChRs compete with cholinergic agonists and antagonists (Endo and Tamiya, 1991) and are characterized by four to five disulfide bridges in snake and

scorpion venoms (Possani et al., 1999; Phui Yee et al., 2004) or two to three disulfide bridges in cone snail toxins (Sine et al., 1995; McIntosh et al., 1999; Ellison et al., 2006).  $\alpha$ -neurotoxins that target nAChRs include  $\alpha$ -Bgtx, MII and BuIA (**Table 1**), while other  $\alpha$ -neurotoxins slow the sodium current inactivation in excitable membranes (Couraud et al., 1982).  $\delta$ -Conotoxins, such as  $\delta$ -SVIE, which bind to  $\text{Na}_v$ s also cause a delayed inactivation of sodium currents (Bulaj et al., 2001). They share a cysteine framework with the structure C-C-CC-C-C, that is identical to that of  $\mu$ O-conotoxins, like MrVIA and MrVIB which inhibit  $\text{Na}_v$ 1.2,  $\text{Na}_v$ 1.4 and  $\text{Na}_v$ 1.8 (Terlau et al., 1996; Daly et al., 2004; Bulaj et al., 2006).  $\mu$ -Conotoxins contain a framework of CC-C-C-CC and are by far the best characterized of all the conotoxins that target  $\text{Na}_v$ s. Several  $\mu$ -conotoxins such as PIIIA, SmIIIA, and potentially BuIIIA, inhibit  $\text{Na}_v$ s in a similar manner to tetrodotoxin (TTX), by binding to site I on the channel (Catterall, 2000; Goldin, 2001). Despite the ever growing number of discovered natural toxins, only a few  $\kappa$ -conotoxins have been characterized so

**Table 1 | Examples of venom peptide toxins used for generation of tethered modulators and corresponding targeted receptors/ion channels.**

Tethered toxin	Origin	Length (aa)	Ion channel/receptor specificity	Original reference
AgallIA	<i>Agelenopsis aperta</i> (funnel web spider)	76	VGCC: $\text{Ca}_v$ 2.2 (N-type), $\text{Ca}_v$ 1 (L-type)	Mintz et al. (1991)
AgalVA		48	VGCC: $\text{Ca}_v$ 2.1 (P/Q-type)	Mintz et al. (1992)
APETx2	<i>Anthopleura elegantissima</i> (aggregating anemone)	42	homomeric ASIC3 > heteromeric ASIC3-ASIC2b	Diochot et al. (2004)
$\alpha$ -AulB	<i>Conus aulicus</i> (gilded cone snail)	15	nAChR: $\alpha$ 3 $\beta$ 4 >> $\alpha$ 2 $\beta$ 2	Luo et al. (1998)
$\alpha$ -Bgtx	<i>Bungarus multicinctus</i> (multi-banded krait)	74	nAChR: $\alpha$ 7, $\alpha$ 1 $\beta$ 1 $\delta$ $\gamma$ $\epsilon$ , $\alpha$ 3 $\beta$ 2	Chang and Lee (1963), Nirthanan and Gwee (2004)
$\kappa$ -Bgtx		66	nAChR: $\alpha$ 3 $\beta$ 2, $\alpha$ 7, $\alpha$ 4 $\beta$ 2	Chiappinelli (1983)
$\mu$ -BuIIIA, B, C	<i>Conus bullatus</i> (bubble cone snail)	26	VGSC: $\text{Na}_v$ 1.4	Holford et al. (2009)
$\alpha$ -BulA		13	nAChR: $\alpha$ 6 $\beta$ 2 > $\alpha$ 3 $\beta$ 2 > $\alpha$ 2 $\beta$ 2 > $\alpha$ 4 $\beta$ 2	Azam et al. (2005)
$\alpha$ -GID	<i>Conus geographus</i> (geography cone snail)	19	nAChR: $\alpha$ 7 = $\alpha$ 3 $\beta$ 2 > $\alpha$ 4 $\beta$ 2, $\alpha$ 3 $\beta$ 4	Nicke et al. (2003)
HntxIII	<i>Haplopelma hainanum</i>	35	VGSC: DRG $\text{Na}_v$ TTX-S	Xiao and Liang (2003)
HntxIV	(Chinese giant black earth tiger)	35	VGSC: DRG $\text{Na}_v$ TTX-S	Xiao and Liang (2003)
Kurtoxin	<i>Parabuthus transvaalicus</i> (South African fattail scorpion)	63	VGCC: $\text{Ca}_v$ 3 (T-type), $\text{Ca}_v$ 2.1 (P/Q-type)	Chuang et al. (1998)
$\alpha$ -MI	<i>Conus magus</i> (Magician's cone snail)	14	nAChR: $\alpha$ 1 $\beta$ 1 $\delta$ $\epsilon$ >> $\alpha$ 1 $\beta$ 1 $\delta$ $\gamma$	McIntosh et al. (1982)
$\alpha$ -MII		16	nAChR: $\alpha$ 6/ $\alpha$ 3 $\beta$ 2 > $\alpha$ 3 $\beta$ 2 > $\alpha$ 3 $\beta$ 4 = $\alpha$ 4 $\beta$ 2	Cartier et al. (1996)
$\omega$ -MVIIA		25	VGCC: $\text{Ca}_v$ 2.2 (N-type)	Bowersox and Luther (1998)
$\omega$ -MVIIIC		26	VGCC: $\text{Ca}_v$ 2.1 (P/Q-type), $\text{Ca}_v$ 2.2 (N-type)	Hillyard et al. (1992)
$\mu$ O-MrVIA	<i>Conus marmoreus</i> (marbled cone snail)	31	VGSC: $\text{Na}_v$ 1.2, 1.4, 1.8	McIntosh et al. (1995)
$\mu$ -PIIIA	<i>Conus purpurascens</i> (purple cone snail)	22	VGSC: $\text{Na}_v$ 1.2	Shon et al. (1998)
$\kappa$ -PVIIA		27	VGKC: Kv1 shaker channel	Terlau et al. (1996)
$\alpha$ -PnIB	<i>Conus pennaceus</i> (penniform cone snail)	16	nAChR: $\alpha$ 7 > $\alpha$ 3 $\beta$ 2	Fainzilber et al. (1994)
$\alpha$ -RglA	<i>Conus regius</i> (crown cone snail)	12	nAChR: $\alpha$ 9 $\alpha$ 10 >>> $\alpha$ 7	Ellison et al. (2006)
$\kappa$ M-RIIIK	<i>Conus radiatus</i> (rayed cone snail)	24	VGKC: Kv1 shaker channel	Ferber et al. (2003)
$\mu$ -SmIIIA	<i>Conus stercusmuscarum</i> (fly-specked cone snail)	30	VGSC: $\text{Na}_v$ 1.8	West et al. (2002)
SNX482 (1998)	<i>Hysteroocrates gigas</i> (Cameroon red baboon spider)	41	VGSC: $\text{Ca}_v$ 2.3 (R-type)	Newcomb et al.
$\delta$ -SVIE	<i>Conus striatus</i> (striated cone snail)	31	VGSC: $\text{Na}_v$ 1.4 > $\text{Na}_v$ 1.2	Lu et al. (1999)

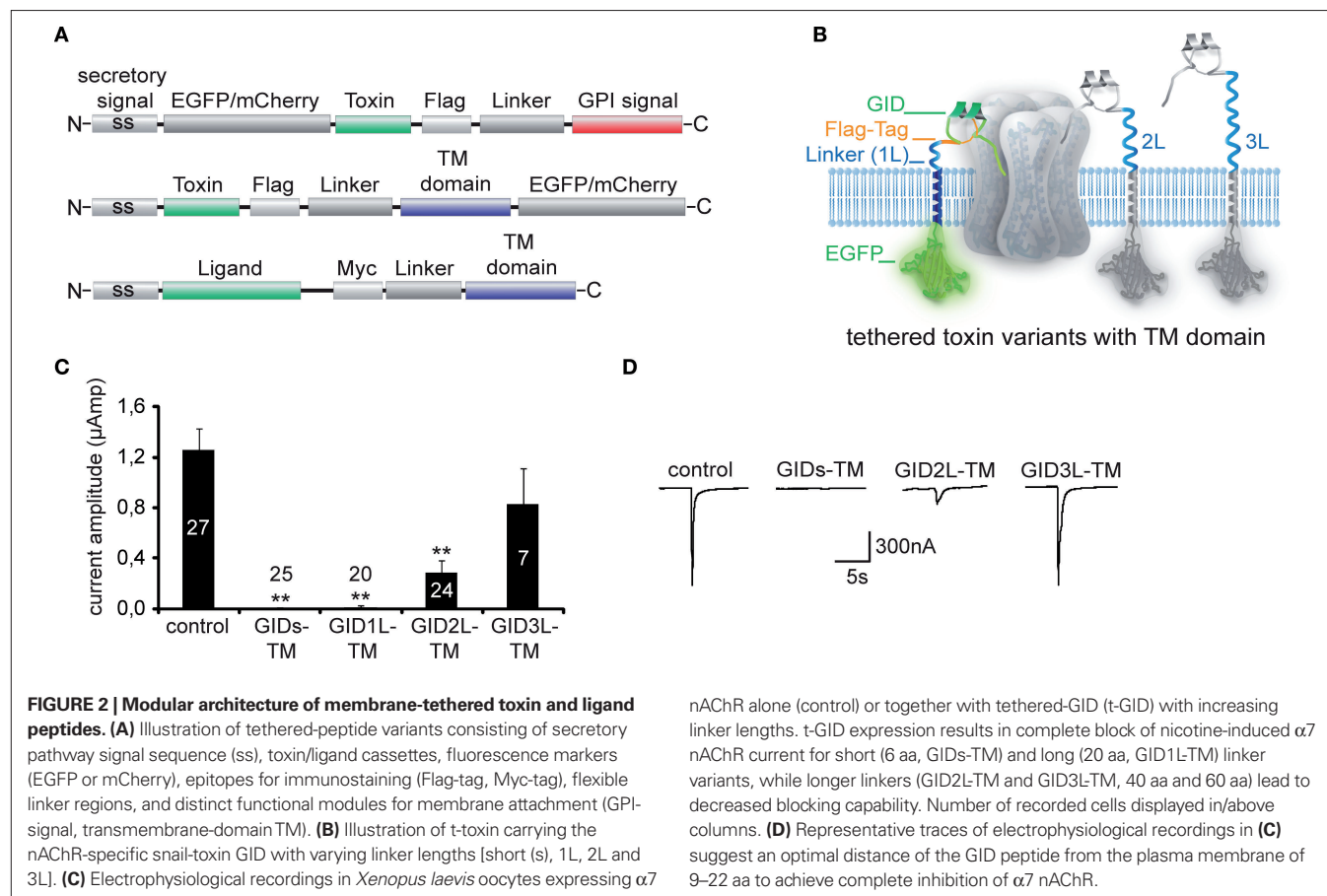
far.  $\kappa$ -conotoxins bind to voltage-dependent potassium channels (VGKC or  $K_v$ ) altering either the repolarization phase of action potentials or the resting membrane potential. The most commonly identified  $\kappa$ -conotoxin is PVIIA, which blocks Shaker K channels cloned from *Drosophila* (Naranjo, 2002). Other gating modifiers of  $K_v$  channels are the phrixotoxins (PaurTX) I and II (Bosmans et al., 2006). Blockers of voltage-gated calcium channels (VGCC or  $Ca_v$ ) include agatoxin IIIA and IVA. The most prominent VGCC toxin antagonist is conotoxin MVIIA, a highly specific blocker of N-type calcium channels which has been developed as an analgesic for the treatment of chronic pain (Miljanich, 2004; Staats et al., 2004).

The high degree of specificity with which venom peptide toxins bind to voltage and ligand gated sodium ( $Na_v$ ), calcium ( $Ca_v$ ), and potassium ( $K_v$ ) ion channels, and receptors such as nAChRs, N-methyl-D-aspartate and G-protein coupled receptors (GPCRs), make them ideal for deciphering the connections between cell types, and for reversibly manipulating the activity of selective cell subtypes.

### ENGINEERING TETHERED PEPTIDES FOR CELL-SURFACE MANIPULATIONS OF RECEPTORS AND ION CHANNELS

The unique functionality of endogenous lynx1-like cell-surface modulators provides a framework to use peptide toxins from predatory animals to manipulate ion channels and receptors in a novel manner. Peptide toxins that have been routinely employed

for neuroscience research do not normally exist as cell-surface anchored molecules. Using the scaffold of the lynx1-like gene family, i.e., secretory signal and consensus sequences for GPI processing and recognition, it is possible to produce a series of tethered toxins (t-toxins) that are highly effective modifiers of neuronal activity (Ibañez-Tallon et al., 2004). This design directs any bioactive peptide to the secretory pathway, where the signal sequence is cleaved and the GPI targeting sequence is substituted by a covalent bond to GPI, anchoring the peptide to the extracellular side of the plasma membrane of the cell in which it is expressed (Figure 1B). Recombinant t-peptides have a modular framework consisting of a secretion signal, linkers, epitopes and/or fluorescent markers and membrane tethers (Figures 1B and 2A). The GPI-anchor targeting motif can be replaced with transmembrane (TM) domains fused with fluorescent marker genes (Figures 2A,B) (Auer et al., 2009). So far, approximately 40 different chimeric t-toxins derived from the venom of several predatory animals have been cloned and their activity has been characterized on voltage and ligand-gated ion channels (Table 1) (Ibañez-Tallon et al., 2004; Hruska et al., 2007; Wu et al., 2008; Stürzebecher et al., 2009; Auer et al., 2009). Furthermore, the t-peptide strategy has also been successfully extended to other bioactive peptides, such as ligand peptides for constitutive activation of GPCRs (Choi et al., 2009; Fortin et al., 2009), illustrating the general applicability of this approach for cell-surface modulation of receptors.





## COMPONENTS CRITICAL TO T-PEPTIDE SYNTHESIS

The biological activity of each tethered construct has to be individually evaluated and optimized per receptor/channel combination. While anyone with knowledge of cloning technology can construct a tethered-peptide, some forethought is required depending on how the t-peptide will be implemented. This is due to several factors including variability in the nature of the bioactive peptide and ion channel or receptor being targeted, and in the constraints imposed by the modular architecture of the tethers, linkers and epitope-tags. The vast amount of modular choices available for constructing tethered toxins point to its broad appeal and indicate the feasibility of tailor-made tethered manipulators for a wide range of different receptors/channels.

### Amino acid composition of the bioactive peptide

Expression and functional assays have revealed that several elements are critical to achieve robust expression on the cell-surface and rotational flexibility for correct modulation of the t-toxin/peptide to the receptor or channel of interest. The affinity of the bioactive peptide for its cognate ion channel or receptor has to be taken into account. Toxins with a strong affinity are potentially more effective. It is also important to consider the composition and length of the peptides to be tethered, i.e., charges and hydrophobicity of the amino acid residues, number of cysteine bonds in the case of toxins, and existence of non-canonical residues, or terminal amidations. For example, substitution of hydroxylated or carboxylated amino acids with non-modified residues in highly post-translationally modified conotoxins, such as GVIA (Olivera et al., 1984), RIIIK (Ferber et al., 2003), PIIIA (Shon et al., 1998) and GID (Nicke et al., 2003), failed to yield satisfactory activity in their tethered constructs, except in the case of GID (see **Figures 2C,D**). Most likely these variations in efficacy are dependent on the location of the posttranslational modification in the toxin sequence. In general, the makeup of the peptide or toxin to be tethered has to be taken into account, but it is not predictive of the expression and activity of its tethered form. MrVIA and MrVIB, which despite their high hydrophobicity content and difficulties to be chemically synthesized (Terlau et al., 1996; Bulaj et al., 2006), are well expressed at the cell-membrane, and functionally active when tethered (Ibañez-Tallon et al., 2004; Wu et al., 2008; Stürzebecher et al., 2009). Other examples are the tethered forms of  $\alpha$ - and  $\kappa$ -bungarotoxins which were well expressed and functionally competent (Ibañez-Tallon et al., 2004; Hruska et al., 2007) despite being long peptides (68–82 aa), while shorter conotoxins such as SmIIIA (30aa) or MVIIC (26aa) were not heterologously expressed, possibly due to folding disturbances or high proportion of charged amino acids.

### Distance of the linker region

Another relevant feature when designing t-peptide constructs is the linker sequence bridging the toxin peptide to the GPI anchor or TM domain (**Figures 2A,B**). The distance of the t-toxin or t-peptide from the cell-surface has to be tailor-made for individual receptors and channels, and can be used for mapping active binding sites. Tethered constructs have been cloned using linkers consisting of glycine-asparagine repeats with lengths varying from 6 amino acids (short) to 20 amino acids (long), 40aa (2× long) or 60 aa (3× long) (**Figure 2B**) (Ibañez-Tallon et al., 2004). The longer flexible

linker provides rotational freedom for the t-toxin to bind within the vestibule of voltage-gated channels (Ibañez-Tallon et al., 2004), or for ligand peptides to reach their binding site, such as onto class B1 GPCRs (Fortin et al., 2009). Experiments varying the length of the linker region of t-GID conotoxin indicate that a linker is necessary for inactivation of  $\alpha 7$  nAChR currents. However, when the linker exceeds a certain length the inactivation is incomplete (**Figures 2B–D**). Similarly, the tethered form of the neuropeptide pigment dispersing factor (t-PDF) requires a short linker for effective binding to its receptor (Choi et al., 2009).

### Choice of membrane tether: GPI vs. TM

The choice of membrane tether depends on the characteristics of the peptide as well as on the epitope-tags and markers to be used in combination (**Figures 1B and 2A,B**). GPI anchors, which are less bulky than TM domains, may facilitate the mobility of the t-peptide in close proximity to its receptor within the plasma membrane. If the toxin or peptide does not require a free N-terminus for interacting with its cognate receptor, GPI versions containing EGFP followed by the t-toxin may be used (**Figure 2**). However, GPI anchors are susceptible to cleavage by endogenous phospholipases, such as PI-PLC and phospholipase D (Paulick and Bertozzi, 2008). This has been suggested as a mechanism used by cells for selective and rapid release of certain GPI-anchored proteins at specific times. To avoid this potential problem, the GPI anchor can be replaced with a TM domain in t-toxins (**Figure 2**). TM domains can be used to retain t-peptides at the cell-surface and link fluorescent markers to the cytoplasmic side of the plasma membrane avoiding hindrances between them.

## CELL-SPECIFIC TARGETING AND CELL-AUTONOMOUS REGULATION IN MODEL ORGANISMS

Tethered toxins and peptides can be used for very diverse applications pertaining to experimental animal physiology. Because of their mode of action at the cell-surface, membrane-anchored peptide molecules act only on ion channels and receptors present in the membrane of the cell that is expressing the t-toxin or t-peptide, and not on identical receptors present on neighboring cells that do not express the tethered construct (Ibañez-Tallon et al., 2004). Several studies have shown that recombinant toxins as well as peptide ligands are not dispersed in solution and retain their high specificity for their cognate receptors, indicating that this approach can be used to restrict the site of neurotoxin or peptide ligand action to genetically targeted cells. For example, *in vivo* transgenic delivery of t- $\alpha$ Bgtx in zebrafish using a muscle cell-specific promoter results in blockade of nAChR currents in muscle cells that express t- $\alpha$ Bgtx but not in adjacent muscle fibers or in cells that express t- $\kappa$ Bgtx, which has no activity on muscle-nAChRs (Ibañez-Tallon et al., 2004). Similarly, experiments in chicken employing a viral system to transduce ciliary neurons have revealed that expression of t- $\alpha$ Bgtx blocks calcium currents via nAChRs and prevents programmed cell-death of these neurons during early development (Hruska et al., 2007). Further *in vivo* applications of the tethered toxin strategy have been carried out using transgenesis in *Drosophila melanogaster*. These studies have shown that cell-specific expression of the sodium channel toxin  $\delta$ -ACTX-Hv1a in pacemaker clock neurons induces arrhythmicity (Wu et al., 2008). Transgenic targeting of the same

clock neurons with a tethered form of the PDF neuropeptide, which is normally rhythmically secreted by these neurons, constitutively activates its cognate GPCR, interfering with circadian control circuit (Choi et al., 2009). These examples illustrate the possibilities for cell-specific targeting and cell-autonomous regulation of channels and receptors with genetically encoded tethered toxins. As venom toxins are established tools for dissecting ionic currents in many animal species, the tethered-toxin strategy allows cell specific functional analysis of ion channels and receptors in model organisms (e.g., zebrafish, flies, rats, large mammals) for which transgenic methodologies are commonly used but gene targeting strategies are yet not available.

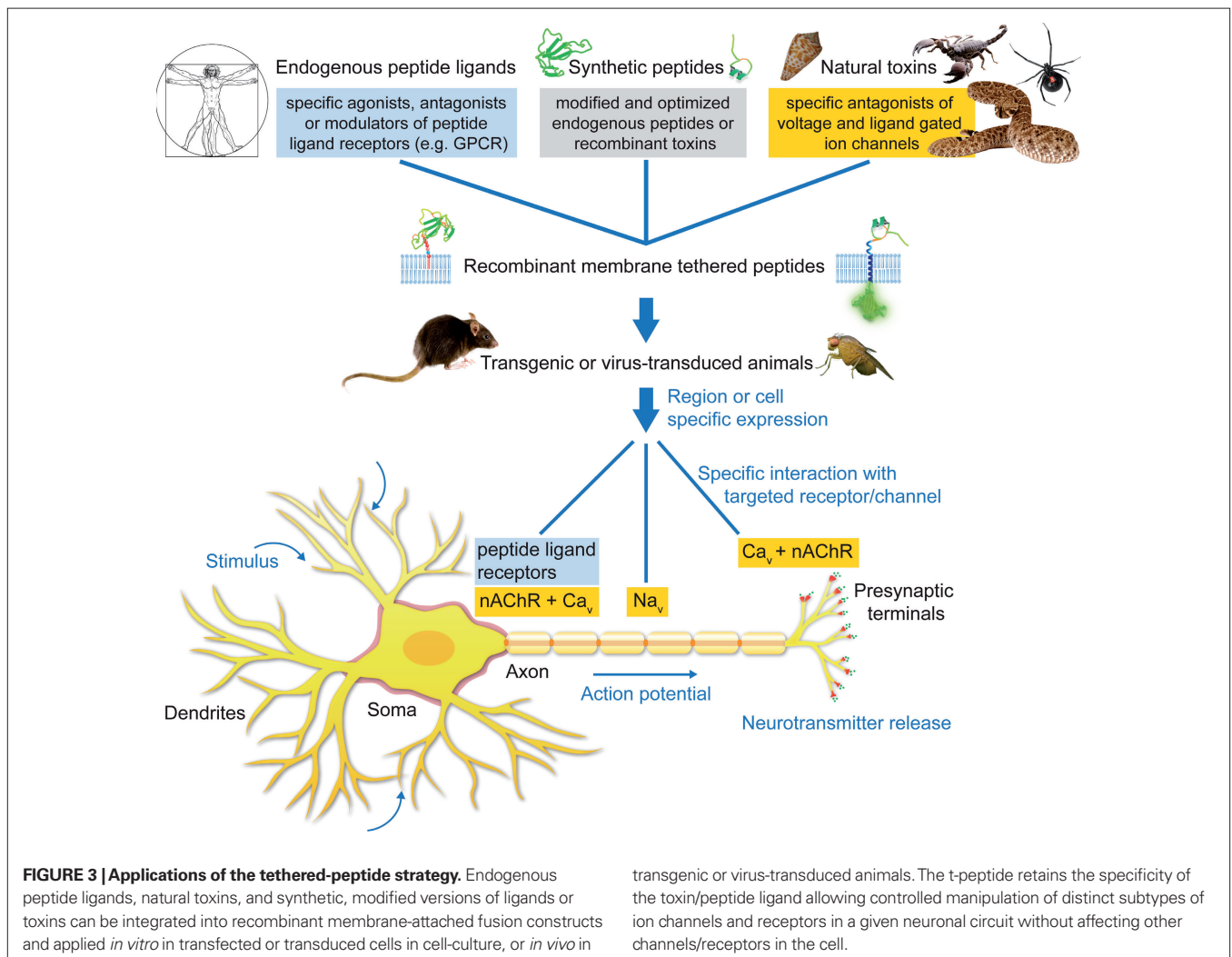
### APPLICATIONS AND PERSPECTIVE USE OF CELL-SURFACE PEPTIDES TO BASIC RESEARCH, CELL-BASED THERAPIES AND DRUG DISCOVERY

Ion channels and receptors are involved in every physiological action from breathing to heart beating. Understanding the mechanics and functional activity of these macromolecular complexes is a grand challenge in science. The tethered-peptide method is one tool that has the potential to tackle certain aspects

of this challenge, particularly in the area of cell-specific modulators (Figure 3). Genetically encoded cell-surface modulators can be adapted to a wide range of applications due to their small size, amenability to point mutagenesis, and relative ease to be combined with fluorescent markers, viral and transgenic vectors, Cre-dependent and transcriptional-control elements, and sub-cellular targeting motifs. Inhibition or constitutive activation of ion channels and receptors can be attained in a cell-type specific manner depending on the selectivity of the neuroactive peptide or hormone.

### NEURONAL CIRCUITS: DISSECTING INDIVIDUAL IONIC CURRENTS

Manipulation of ion channels in specific neuronal populations within living animals can be achieved by transgenesis (Ibanez-Tallon et al., 2004; Wu et al., 2008). Similarly, viral methods can be employed to characterize the cellular functions mediated by specific ionic currents inactivated by delivery of t-toxins (Hruska et al., 2007). Gene knockouts led to a wide range of studies to characterize the function of receptors and ion channels (Capecchi, 2005). However, many receptors consist of multimeric assemblies of components, with common



components frequently shared by functionally diverse receptor types, modifying any one gene can potentially compromise the function of every complex with which it is associated. For example, it has proven difficult to separate the contribution of  $Ca_v2.1$  and  $Ca_v2.2$  VGCC channels by targeted deletion of one or the other alpha subunits because of functional compensation of ionic currents (Inchauspe et al., 2004; Takahashi et al., 2004). As venom toxins inactivate specific ionic currents produced by a receptor or channel complex, the t-toxin strategy could be an alternative to prevent compensatory ionic currents that may occur upon gene-deletion of receptor subunits.

The cell-autonomous modulatory action of tethered peptides and their selectivity for cognate cell-surface molecules can be further exploited by directing t-peptide molecules to subcellular compartments within the neuron (**Figure 3**). For instance, t-toxins could be directed to the axon initial segment where sodium channels are concentrated (Garrido et al., 2003), or to the dendritic compartment (Lewis et al., 2009). Further modifications of a number of optimized and novel tethered toxins for *in vivo* use will offer new possibilities for investigations regarding the physiology of neuronal circuits.

### CHANNELOPATHIES AND OTHER DISEASES

The tethered-peptide strategy represents a potential new avenue for the development of genetic therapies for chronic diseases caused by malfunction of ion channels and peptide ligand receptors. Several human disorders that affect nervous system functions have been traced to mutations in genes encoding ion channels or regulatory proteins (George, 2005). These disorders, referred to as channelopathies, can be targeted by the tethered-peptide strategy when the disorder results in hyperactivity of the channel. Examples of hyperactive disorders include gain-of-function mutations in P/Q-type calcium channels, linked to familial hemiplegic migraine type 1 (Ophoff et al., 1996; Tottene et al., 2009), or mutations in neuronal nAChRs associated to autosomal dominant nocturnal frontal lobe epilepsy (Steinlein et al., 1995; Klaassen et al., 2006). One potential application would be to genetically introduce t-toxins into the corresponding mouse mutant models in a cell-specific manner to dissect the circuitry of the disease (**Figure 3**). Conversely, activation of receptors with t-peptide ligands could be beneficial to control GPCRs in a cell-selective manner (**Figure 3**). For instance, isoforms of glucagon-like and calcitonin-gene-related peptides are presently being used to regulate insulin release and bone remodeling in diabetes (Green and Flatt, 2007) and osteoporosis (Hoare, 2005). Similarly, feeding-regulation neuropeptides such as orexin or ghrelin (Shioda et al., 2008) could be targeted to circuits involved in appetite control, or tethered opioid peptides could be directed to nociceptive neurons. With an ever-growing interest in identifying the potential of naturally occurring venom peptide toxins (Blumenthal and Seibert, 2003; Han et al., 2008; Twede et al., 2009), as well as novel ligands for orphan GPCRs encrypted in the human proteome (Jiang and Zhou, 2006; Shemesh et al., 2008), an increasing number of peptide based therapies could be possible. Furthermore, parallel development on the safety of viral methods for genetic intervention will increase the number of diseases to which the t-peptide strategy is applicable.

### IMPLICATIONS OF TETHERED PEPTIDES FOR DRUG DISCOVERY

Ion channels and GPCRs are some of the biggest molecular drug targets yet presently remain underexploited in drug discovery efforts. Peptide toxins, which are highly effective modulators of ion channels and GPCRs, offer an intriguing opportunity for increasing the drug development pipeline. Specific areas in which peptide toxins have demonstrated their potential include chronic pain (Miljanich, 2004) and myasthenic autoimmune response (Drachman, 1981). A major drawback to the universal usage of peptide toxins in the development of therapeutics has been the scarcity of obtaining the venom product. To circumvent this, most toxins are synthesized chemically, but this too has significant problems, one being obtaining the correct disulfide scaffold with *in vitro* folding. To combat these synthesis hurdles several structural strategies and characterization methods have been developed (Munson and Barany, 1993; Cuthbertson and Indrevoll, 2000; Han et al., 2009; Ueberheide et al., 2009; Walewska et al., 2009). However, even when the toxin is successfully synthesized, soluble toxins cannot be directed to single cell populations, are expensive, and have a limited time of application that makes their use *in vivo* problematic. The t-peptide strategy surmounts these limitations with the ability to recombinantly synthesize the toxins or peptide ligands in the cell itself, and co-express it with the molecular target (receptor or channel) to be screened. Such a cell-surface peptide tethering strategy can readily introduce point mutations to interconvert tethered agonists into antagonists. Several recent reports use the t-peptide technology to characterize point mutants of peptide hormones against class B1 GPCRs (Ibañez-Tallon et al., 2004; Fortin et al., 2009). In a similar manner, the t-peptide technology could be applied to screen gene libraries of t-peptides against specific membrane proteins by co-expression in the same cell. T-peptides with activating or blocking capabilities could be monitored with functional assays, i.e., calcium influx. This type of screen could be beneficial to block channels that are hyperactive in certain diseases, such as TRPP2, for which no natural toxins have yet been identified. These features make the t-peptide genetic approach a promising strategy for drug discovery and development of targeted therapeutics.

### SUMMARY

The t-peptide strategy is an innovative technique for manipulating neuronal circuits in order to dissect the specific biological roles of ion channels and cell-surface receptors both *in vitro* and *in vivo*. The studies presented here illustrate how the t-peptide approach can be used to increase cellular specificity of neuropeptides by restricting their actions to targeted cell types through membrane tethering. The t-peptide method is relatively easy to implement and has the potential to significantly impact neuroscience research and cell-based drug screening of membrane proteins for targeted therapeutics.

### ACKNOWLEDGMENTS

This work was supported by the Helmholtz Gemeinschaft, and SFB 665. Mandë Holford acknowledges support from the Chemistry Division and Office of International Science and Engineering at the NSF (CHE 0610202).



## REFERENCES

- Adermann, K., Wattler, F., Wattler, S., Heine, G., Meyer, M., Forssmann, W. G., and Nehls, M. (1999). Structural and phylogenetic characterization of human SLURP-1, the first secreted mammalian member of the Ly-6/uPAR protein superfamily. *Protein Sci.* 8, 810–819.
- Arredondo, J., Chernyavsky, A. I., Jolkovsky, D. L., Webber, R. J., and Grando, S. A. (2006). SLURP-2: a novel cholinergic signaling peptide in human mucocutaneous epithelium. *J. Cell. Physiol.* 208, 238–245.
- Azam, L., Dowell, C., Watkins, M., Stitzel, J. A., Olivera, B. M., and McIntosh, J. M. (2005). [alpha]-Conotoxin BuIA, a novel peptide from *Conus bullatus*, distinguishes among neuronal nicotinic acetylcholine receptors. *J. Biol. Chem.* 280, 80–87.
- Blasi, F., and Carmeliet, P. (2002). uPAR: a versatile signalling orchestrator. *Nat. Rev. Mol. Cell Biol.* 3, 932–943.
- Blumenthal, K. M., and Seibert, A. L. (2003). Voltage-gated sodium channel toxins: poisons, probes, and future promise. *Cell Biochem. Biophys.* 38, 215–238.
- Bosmans, F., Rash, L., Zhu, S., Diocot, S., Lazdunski, M., Escoubas, P., and Tytgat, J. (2006). Four novel tarantula toxins as selective modulators of voltage-gated sodium channel subtypes. *Mol. Pharmacol.* 69, 419–429.
- Bosmans, F., and Tytgat, J. (2007). Voltage-gated sodium channel modulation by scorpion alpha-toxins. *Toxicon* 49, 142–158.
- Bowersox, S. S., and Luther, R. (1998). Pharmacotherapeutic potential of omega-conotoxin MVIIA (SNX-111), an N-type neuronal calcium channel blocker found in the venom of *Conus magus*. *Toxicon* 36, 1651–1658.
- Bulaj, G., DeLaCruz, R., Azimi-Zonooz, A., West, P., Watkins, M., Yoshikami, D., and Olivera, B. M. (2001).  $\delta$ -Conotoxin structure/function through a cladistic analysis. *Biochemistry* 40, 13201–13208.
- Bulaj, G., Zhang, M., Green, B. R., Fiedler, B., Layer, R. T., Wei, S., Nielsen, J. S., Low, S. J., Klein, B. D., Wagstaff, J. D., Chicoine, L., Harty, T. P., Terlau, H., Yoshikami, D., and Olivera, B. M. (2006). Synthetic  $\mu$ O-conotoxin MrVIB blocks TTX-resistant sodium channel NaV1.8 and has a long-lasting analgesic activity. *Biochemistry* 45, 7404–7414.
- Capecchi, M. R. (2005). Gene targeting in mice: functional analysis of the mammalian genome for the twenty-first century. *Nat. Rev. Genet.* 6, 507–512.
- Cartier, G. E., Yoshikami, D., Gray, W. R., Luo, S., Olivera, B. M., and McIntosh, J. M. (1996). A new alpha-conotoxin which targets alpha3beta2 nicotinic acetylcholine receptors. *J. Biol. Chem.* 271, 7522–7528.
- Catterall, W. A. (1986). Molecular properties of voltage-sensitive sodium channels. *Annu. Rev. Biochem.* 55, 953–985.
- Catterall, W. A. (2000). From ionic currents to molecular mechanisms: the structure and function of voltage-gated sodium channels. *Neuron* 26, 13–25.
- Chang, C. C., and Lee, C. Y. (1963). Isolation of neurotoxins from the venom of *Bungarus multicinctus* and their modes of neuromuscular blocking action. *Arch. Int. Pharmacodyn. Ther.* 144, 241–257.
- Chiappinelli, V. A. (1983). Kappa-bungarotoxin: a probe for the neuronal nicotinic receptor in the avian ciliary ganglion. *Brain Res.* 277, 9–22.
- Chiappinelli, V. A. (1991). K-neurotoxins and  $\alpha$ -neurotoxins: effects on neuronal nicotinic acetylcholine receptors. In *Snake Toxins*, A. L. Harvey, ed. New York, Pergamon Press, pp. 223–258.
- Chimienti, F., Hogg, R. C., Plantard, L., Lehmann, C., Brakch, N., Fischer, J., Huber, M., Bertrand, D., and Hohl, D. (2003). Identification of SLURP-1 as an epidermal neuromodulator explains the clinical phenotype of Mal de Meleda. *Hum. Mol. Genet.* 12, 3017–3024.
- Choi, C., Fortin, J., McCarthy, E. V., Oksman, L., Kopin, A. S., and Nitabach, M. N. (2009). Cellular dissection of circadian peptide signals using genetically encoded membrane-tethered ligands. *Curr. Biol.* 19, 1167–1175.
- Choo, Y. M., Lee, B. H., Lee, K. S., Kim, B. Y., Li, J., Kim, J. G., Lee, J. H., Sohn, H. D., Nah, S. Y., and Jin, B. R. (2008). Prlynx1, a modulator of nicotinic acetylcholine receptors in the insect. *Mol. Cell. Neurosci.* 38, 224–235.
- Chou, J. H., Bargmann, C. I., and Sengupta, P. (2001). The *Caenorhabditis elegans* odr-2 gene encodes a novel Ly-6-related protein required for olfaction. *Genetics* 157, 211–224.
- Chuang, R. S., Jaffe, H., Cribbs, L., Perez-Reyes, E., and Swartz, K. J. (1998). Inhibition of T-type voltage-gated calcium channels by a new scorpion toxin. *Nat. Neurosci.* 1, 668–674.
- Couraud, F., Jover, E., Dubois, J. M., and Rochat, H. (1982). Two types of scorpion receptor sites, one related to the activation, the other to the inactivation of the action potential sodium channel. *Toxicon* 20, 9–16.
- Cuthbertson, A., and Indrevoll, B. (2000). A method for the one-pot regioselective formation of the two disulfide bonds of [alpha]-conotoxin SI. *Tetrahedron Lett.* 41, 3661–3663.
- Daly, N. L., Ekberg, J. A., Thomas, L., Adams, D. J., Lewis, R. J., and Craik, D. J. (2004). Structures of  $\mu$ O-conotoxins from *Conus marmoreus*. Inhibitors of tetrodotoxin (TTX)-sensitive and TTX-resistant sodium channels in mammalian sensory neurons. *J. Biol. Chem.* 279, 25774–25782.
- Darvas, M., Morsch, M., Racz, I., Ahmadi, S., Swandulla, D., and Zimmer, A. (2009). Modulation of the Ca(2+) conductance of nicotinic acetylcholine receptors by Lypd6. *Eur. Neuropsychopharmacol.* 19, 670–681.
- Davies, A., Simmons, D., Hale, G., Harrison, R., Tighe, H., Lachmann, P., and Waldmann, H. (1989). CD59, an LY-6-like protein expressed in human lymphoid cells, regulates the action of the complement membrane attack complex on homologous cells. *J. Exp. Med.* 170, 637–654.
- de Nooij-van Dalen, A. G., van Dongen, G. A. M. S., Smeets, S. J., Nieuwenhuis, E. J. C., Stigter-van Walsum, M., Snow, G. B., and Brakenhoff, R. H. (2003). Characterization of the human Ly-6 antigens, the newly annotated member Ly-6K included, as molecular markers for head-and-neck squamous cell carcinoma. *Int. J. Cancer* 103, 768–774.
- Dessaud, E., Salaün, D., Gayet, O., Chabbert, M., and deLapeyrière, O. (2006). Identification of lynx2, a novel member of the ly-6/neurotoxin superfamily, expressed in neuronal subpopulations during mouse development. *Mol. Cell. Neurosci.* 31, 232–242.
- Diocot, S., Baron, A., Rash, L. D., Deval, E., Escoubas, P., Scarzello, S., Salinas, M., and Lazdunski, M. (2004). A new sea anemone peptide, APETx2, inhibits ASIC3, a major acid-sensitive channel in sensory neurons. *EMBO J.* 23, 1516–1525.
- Drachman, D. B. (1981). The biology of myasthenia gravis. *Annu. Rev. Neurosci.* 4, 195–225.
- Ellison, M., Haberlandt, C., Gomez-Casati, M. E., Watkins, M., Elgoyhen, A. B., McIntosh, J. M., and Olivera, B. M. (2006).  $\alpha$ -RgIA: a novel conotoxin that specifically and potently blocks the  $\alpha 9\alpha 10$  nAChR. *Biochemistry* 45, 1511–1517.
- Endo, T., and Tamiya, N. (1991). Structure–function relationship of postsynaptic neurotoxins from snake venoms. In *Snake Toxins*, A. L. Harvey, ed. (New York, Pergamon Press), pp. 165–222.
- Fainzilber, M., Hasson, A., Oren, R., Burlingame, A. L., Gordon, D., Spira, M. E., and Zlotkin, E. (1994). New mollusc-specific alpha-conotoxins block *Aplysia* neuronal acetylcholine receptors. *Biochemistry* 33, 9523–9529.
- Ferber, M., Sporning, A., Jeserich, G., DeLaCruz, R., Watkins, M., Olivera, B. M., and Terlau, H. (2003). A novel *Conus* peptide ligand for K+ channels. *J. Biol. Chem.* 278, 2177–2183.
- Fontecilla-Camps, J. C., Habersetzer-Rochat, C., and Rochat, H. (1988). Orthorhombic crystals and three-dimensional structure of the potent toxin II from the scorpion *Androctonus australis hector*. *Proc. Natl. Acad. Sci. U.S.A.* 85, 7443–7447.
- Fortin, J., Zhu, Y., Choi, C., Beinborn, M., Nitabach, M. N., and Kopin, A. S. (2009). Membrane-tethered ligands are effective probes for exploring class B1 G protein-coupled receptor function. *Proc. Natl. Acad. Sci. U.S.A.* 106, 8049–8054.
- Garrido, J. J., Giraud, P., Carlier, E., Fernandes, F., Moussif, A., Fache, M., Debanne, D., and Dargent, B. (2003). A targeting motif involved in sodium channel clustering at the axonal initial segment. *Science* 300, 2091–2094.
- George, A. L. (2005). Inherited disorders of voltage-gated sodium channels. *J. Clin. Invest.* 115, 1990–1999.
- Goldin, A. L. (2001). Resurgence of sodium channel research. *Annu. Rev. Physiol.* 63, 871–894.
- Gowd, K. H., Twede, V., Watkins, M., Krishnan, K. S., Teichert, R. W., Bulaj, G., and Olivera, B. M. (2008). Conantokin-P, an unusual conantokin with a long disulfide loop. *Toxicon* 52, 203–213.
- Green, B. D., and Flatt, P. R. (2007). Incretin hormone mimetics and analogues in diabetes therapeutics. *Best Pract. Res. Clin. Endocrinol. Metab.* 21, 497–516.
- Han, T. S., Teichert, R. W., Olivera, B. M., and Bulaj, G. (2008). *Conus* venoms – a rich source of peptide-based therapeutics. *Curr. Pharm. Des.* 14, 2462–2479.
- Han, T. S., Zhang, M., Walewska, A., Gruszczynski, P., Robertson, C. R., Cheatham, T. E., Yoshikami, D., Olivera, B. M., and Bulaj, G. (2009). Structurally minimized  $\mu$ -conotoxin analogues as sodium channel blockers: implications for designing conopeptide-based therapeutics. *Chem. Med. Chem.* 4, 406–414.
- Hijazi, A., Masson, W., Auge, B., Waltzer, L., Haenlin, M., and Roch, F. (2009). Boudin is required for septate junction organisation in *Drosophila* and codes for a diffusible protein of the Ly6 superfamily. *Development* 136, 2199–2209.



- Hillyard, D. R., Monje, V. D., Mintz, I. M., Bean, B. P., Nadasdi, L., Ramachandran, J., Miljanich, G., Azimi-Zoonooz, A., McIntosh, J. M., and Cruz, L. J. (1992). A new *Conus* peptide ligand for mammalian presynaptic Ca<sup>2+</sup> channels. *Neuron* 9, 69–77.
- Hoare, S. R. J. (2005). Mechanisms of peptide and nonpeptide ligand binding to Class B G-protein-coupled receptors. *Drug Discov. Today* 10, 417–427.
- Holford, M., Zhang, M., Gowd, K. H., Azam, L., Green, B. R., Watkins, M., Ownby, J., Yoshikami, D., Bulaj, G., and Olivera, B. M. (2009). Pruning nature: biodiversity-derived discovery of novel sodium channel blocking conotoxins from *Conus bullatus*. *Toxicol* 53, 90–98.
- Hruska, M., Ibañez-Tallon, I., and Nishi, R. (2007). Cell-autonomous inhibition of alpha 7-containing nicotinic acetylcholine receptors prevents death of parasympathetic neurons during development. *J. Neurosci.* 27, 11501–11509.
- Hruska, M., Keefe, J., Wert, D., Tekinay, A., Hulse, J., Ibañez-Tallon, I., and Nishi, R. (2009). Prostate stem cell antigen is an endogenous lynx1-like prototoxin that antagonizes alpha7 containing nicotinic receptors and prevents programmed cell death of parasympathetic neurons. *J. Neurosci.* (In press).
- Hucho, F., Tsetlin, V. I., and Machold, J. (1996). The emerging three-dimensional structure of a receptor. The nicotinic acetylcholine receptor. *Eur. J. Biochem.* 239, 539–557.
- Ibañez-Tallon, I., Miwa, J. M., Wang, H. L., Adams, N. C., Crabtree, G. W., Sine, S. M., and Heintz, N. (2002). Novel modulation of neuronal nicotinic acetylcholine receptors by association with the endogenous prototoxin lynx1. *Neuron* 33, 893–903.
- Ibañez-Tallon, I., Wen, H., Miwa, J. M., Xing, J., Tekinay, A. B., Ono, F., Brehm, P., and Heintz, N. (2004). Tethering naturally occurring peptide toxins for cell-autonomous modulation of ion channels and receptors in vivo. *Neuron* 43, 305–11.
- Inchauspe, C. G., Martini, F. J., Forsythe, I. D., and Uchitel, O. D. (2004). Functional compensation of P/Q by N-type channels blocks short-term plasticity at the calyx of held presynaptic terminal. *J. Neurosci.* 24, 10379–10383.
- Jiang, Z., and Zhou, Y. (2006). Using silico methods predicting ligands for orphan GPCRs. *Curr. Protein Pept. Sci.* 7, 459–464.
- Klaassen, A., Glykys, J., Maguire, J., Labarca, C., Mody, I., and Boulter, J. (2006). Seizures and enhanced cortical GABAergic inhibition in two mouse models of human autosomal dominant nocturnal frontal lobe epilepsy. *Proc. Natl. Acad. Sci. U.S.A.* 103, 19152–19157.
- Léna, C., and Changeux, J. P. (1998). Allosteric nicotinic receptors, human pathologies. *J. Physiol.* 92, 63–74.
- Lewis, T. L., Mao, T., Svoboda, K., and Arnold, D. B. (2009). Myosin-dependent targeting of transmembrane proteins to neuronal dendrites. *Nat. Neurosci.* 12, 568–576.
- Lu, B. S., Yu, F., Zhao, D., Huang, P. T., and Huang, C. F. (1999). Conopeptides from *Conus striatus* and *Conus textile* by cDNA cloning. *Peptides* 20, 1139–1144.
- Luo, S., Kulak, J. M., Cartier, G. E., Jacobsen, R. B., Yoshikami, D., Olivera, B. M., and McIntosh, J. M. (1998). alpha-conotoxin AulB selectively blocks alpha3 beta4 nicotinic acetylcholine receptors and nicotine-evoked norepinephrine release. *J. Neurosci.* 18, 8571–8579.
- Lynch, S. S., Cheng, C. M., and Yee, J. L. (2006). Intrathecal ziconotide for refractory chronic pain. *Ann. Pharmacother.* 40, 1293–1300.
- Mallya, M., Campbell, R. D., and Aguado, B. (2006). Characterization of the five novel Ly-6 superfamily members encoded in the MHC, and detection of cells expressing their potential ligands. *Protein Sci.* 15, 2244–2256.
- McIntosh, J. M., Hasson, A., Spira, M. E., Gray, W. R., Li, W., Marsh, M., Hillyard, D. R., and Olivera, B. M. (1995). A new family of conotoxins that blocks voltage-gated sodium channels. *J. Biol. Chem.* 270, 16796–16802.
- McIntosh, J. M., Santos, A. D., and Olivera, B. M. (1999). *Conus* peptides targeted to specific nicotinic acetylcholine receptor subtypes. *Annu. Rev. Biochem.* 68, 59–88.
- McIntosh, J. M., Cruz, L. J., Hunkapiller, M. W., Gray, W. R., and Olivera, B. M. (1982). Isolation and structure of a peptide toxin from the marine snail *Conus magus*. *Arch. Biochem. Biophys.* 218, 329–334.
- Mebs, D. (1989). Snake venoms: toolbox of the neurobiologist. *Endeavour* 13, 157–161.
- Miljanich, G. P. (2004). Ziconotide: neuronal calcium channel blocker for treating severe chronic pain. *Curr. Med. Chem.* 11, 3029–3040.
- Mintz, I. M., Venema, V. J., Adams, M. E., and Bean, B. P. (1991). Inhibition of N- and L-type Ca<sup>2+</sup> channels by the spider venom toxin omega-Aga-III. *Proc. Natl. Acad. Sci. U.S.A.* 88, 6628–6631.
- Mintz, I. M., Venema, V. J., Swiderek, K. M., Lee, T. D., Bean, B. P., and Adams, M. E. (1992). P-type calcium channels blocked by the spider toxin [omega]-Aga-IVA. *Nature* 355, 827–829.
- Miwa, J., Stevens, T., King, S., Caldarone, B., Ibaneztallon, I., Xiao, C., Fitzsimonds, R., Pavlides, C., Lester, H., and Picciotto, M. (2006). The prototoxin lynx1 acts on nicotinic acetylcholine receptors to balance neuronal activity and survival in vivo. *Neuron* 51, 587–600.
- Miwa, J. M., Ibañez-Tallon, I., Crabtree, G. W., Sánchez, R., Salí, A., Role, L. W., and Heintz, N. (1999). lynx1, an endogenous toxin-like modulator of nicotinic acetylcholine receptors in the mammalian CNS. *Neuron* 23, 105–114.
- Munson, M. C., and Barany, G. (1993). Synthesis of alpha-conotoxin SI, a bicyclic tridecapeptide amide with two disulfide bridges: illustration of novel protection schemes and oxidation strategies. *J. Am. Chem. Soc.* 115, 10203–10210.
- Naranjo, D. (2002). Inhibition of single Shaker K channels by kappa-conotoxin-PVIIA. *Biophys. J.* 82, 3003–3011.
- Newcomb, R., Szoke, B., Palma, A., Wang, G., Chen, X. H., Hopkins, W., Cong, R., Miller, J., Urge, L., Tarczy-Hornoch, K., Loo, J. A., Dooley, D. J., Nadasdi, L., Tsien, R. W., Lemos, J., and Miljanich, G. (1998). Selective peptide antagonist of the class E calcium channel from the venom of the tarantula *Hysteroecrates gigas*. *Biochemistry* 37, 15353–15362.
- Nicke, A., Loughnan, M. L., Millard, E. L., Alewood, P. F., Adams, D. J., Daly, N. L., Craik, D. J., and Lewis, R. J. (2003). Isolation, structure, and activity of GID, a novel alpha 4/7-conotoxin with an extended N-terminal sequence. *J. Biol. Chem.* 278, 3137–3144.
- Nirthanam, S., Charpentier, E., Gopalakrishnakone, P., Gwee, M. C. E., Khoo, H., Cheah, L., Bertrand, D., and Kini, R. M. (2002). Candoxin, a novel toxin from *Bungarus candidus*, is a reversible antagonist of muscle (alphabetagammadelta) but a poorly reversible antagonist of neuronal alpha 7 nicotinic acetylcholine receptors. *J. Biol. Chem.* 277, 17811–17820.
- Nirthanam, S., and Gwee, M. C. E. (2004). Three-finger alpha-neurotoxins and the nicotinic acetylcholine receptor, forty years on. *J. Pharmacol. Sci.* 94, 1–17.
- Norton, R. S., and Olivera, B. M. (2006). Conotoxins down under. *Toxicol* 48, 780–798.
- Olivera, B. M., McIntosh, J. M., Cruz, L. J., Luque, F. A., and Gray, W. R. (1984). Purification and sequence of a presynaptic peptide toxin from *Conus geographus* venom. *Biochemistry* 23, 5087–5090.
- Ophoff, R. A., Terwindt, G. M., Vergouwe, M. N., van Eijk, R., Oefner, P. J., Hoffman, S. M., Lamerding, J. E., Mohrenweiser, H. W., Bulman, D. E., Ferrari, M., Haan, J., Lindhout, D., van Ommen, G. J., Hofker, M. H., Ferrari, M. D., and Frants, R. R. (1996). Familial hemiplegic migraine and episodic ataxia type-2 are caused by mutations in the Ca<sup>2+</sup> channel gene CACNL1A4. *Cell* 87, 543–552.
- Pashkov, V. S., Maiorov, V. N., Bystrov, V. F., Hoang, A. N., Volkova, T. M., and Grishin, E. V. (1988). Solution spatial structure of 'long' neurotoxin M9 from the scorpion *Buthus eupeus* by 1H-NMR spectroscopy. *Biophys. Chem.* 31, 121–131.
- Paulick, M. G., and Bertozzi, C. R. (2008). The glycosylphosphatidylinositol anchor: a complex membrane-anchoring structure for proteins. *Biochemistry* 47, 6991–7000.
- Phui Yee, J. S., Nanling, G., Afifiyan, F., Donghui, M., Siew Lay, P., Armugam, A., and Jeyaseelan, K. (2004). Snake postsynaptic neurotoxins: gene structure, phylogeny and applications in research and therapy. *Biochimie* 86, 137–149.
- Possani, L. D., Becerril, B., Delepiere, M., and Tytgat, J. (1999). Scorpion toxins specific for Na<sup>+</sup>-channels. *Eur. J. Biochem.* 264, 287–300.
- Rock, K. L., Reiser, H., Bamezai, A., McGrew, J., and Benacerraf, B. (1989). The LY-6 locus: a multigene family encoding phosphatidylinositol-anchored membrane proteins concerned with T-cell activation. *Immunol. Rev.* 111, 195–224.
- Sekhon, H. S., Song, P., Jia, Y., Lindstrom, J., and Spindel, E. R. (2005). Expression of lynx1 in developing lung and its modulation by prenatal nicotine exposure. *Cell Tissue Res.* 320, 287–297.
- Shemesh, R., Toporik, A., Levine, Z., Hecht, I., Rotman, G., Wool, A., Dahary, D., Gofer, E., Kliger, Y., Soffer, M. A., Rosenberg, A., Eshel, D., and Cohen, Y. (2008). Discovery and validation of novel peptide agonists for G-protein-coupled receptors. *J. Biol. Chem.* 283, 34643–34649.
- Shioda, S., Takenoya, F., Yagi, M., Wang, L., Hori, Y., and Kageyama, H. (2008). Neural networks of several novel neuropeptides involved in feeding regulation. *Nutrition* 24, 848–853.
- Shon, K. J., Olivera, B. M., Watkins, M., Jacobsen, R. B., Gray, W. R., Floresca, C. Z., Cruz, L. J., Hillyard, D. R., Brink, A., Terlau, H., and Yoshikami, D. (1998). mu-Conotoxin PIIIA, a new

- peptide for discriminating among tetrodotoxin-sensitive Na channel subtypes. *J. Neurosci.* 18, 4473–4481.
- Sine, S. M., Kreienkamp, H. J., Bren, N., Maeda, R., and Taylor, P. (1995). Molecular dissection of subunit interfaces in the acetylcholine receptor: identification of determinants of alpha-conotoxin M1 selectivity. *Neuron* 15, 205–211.
- Staats, P. S., Yearwood, T., Charapata, S. G., Presley, R. W., Wallace, M. S., Byas-Smith, M., Fisher, R., Bryce, D. A., Mangieri, E. A., Luther, R. R., Mayo, M., McGuire, D., and Ellis, D. (2004). Intrathecal ziconotide in the treatment of refractory pain in patients with cancer or AIDS: a randomized controlled trial. *J. Am. Med. Assoc.* 291, 63–70.
- Steinlein, O. K., Mulley, J. C., Propping, P., Wallace, R. H., Phillips, H. A., Sutherland, G. R., Scheffer, I. E., and Berkovic, S. F. (1995). A missense mutation in the neuronal nicotinic acetylcholine receptor alpha 4 subunit is associated with autosomal dominant nocturnal frontal lobe epilepsy. *Nat. Genet.* 11, 201–203.
- Takahashi, E., Ino, M., Miyamoto, N., and Nagasu, T. (2004). Increased expression of P/Q-type Ca<sup>2+</sup> channel alpha1A subunit mRNA in cerebellum of N-type Ca<sup>2+</sup> channel alpha1B subunit gene-deficient mice. *Brain Res. Mol. Brain Res.* 124, 79–87.
- Tekinay, A. B., Nong, Y., Miwa, J. M., Lieberam, I., Ibanez-Tallon, I., Greengard, P., and Heintz, N. (2009). A role for LYNX2 in anxiety-related behavior. *Proc. Natl. Acad. Sci. U.S.A.* 106, 4477–4482.
- Terlau, H., and Olivera, B. M. (2004). *Comus* venoms: a rich source of novel ion channel-targeted peptides. *Physiol. Rev.* 84, 41–68.
- Terlau, H., Shon, K. J., Grille, M., Stocker, M., Stühmer, W., and Olivera, B. M. (1996). Strategy for rapid immobilization of prey by a fish-hunting marine snail. *Nature* 381, 148–151.
- Tottene, A., Conti, R., Fabbro, A., Vecchia, D., Shapovalova, M., Santello, M., van den Maagdenberg, A. M. J. M., Ferrari, M. D., and Pietrobon, D. (2009). Enhanced excitatory transmission at cortical synapses as the basis for facilitated spreading depression in Ca(v)2.1 knockin migraine mice. *Neuron* 61, 762–773.
- Tsetlin, V. (1999). Snake venom alpha-neurotoxins and other 'three-finger' proteins. *Eur. J. Biochem.* 264, 281–286.
- Tsuji, H., Okamoto, K., Matsuzaka, Y., Iizuka, H., Tamiya, G., and Inoko, H. (2003). SLURP-2, a novel member of the human Ly-6 superfamily that is up-regulated in psoriasis vulgaris. *Genomics* 81, 26–33.
- Twede, V. D., Miljanich, G., Olivera, B. M., and Bulaj, G. (2009). Neuroprotective and cardioprotective conopeptides: an emerging class of drug leads. *Curr. Opin. Drug. Discov. Dev.* 12, 231–239.
- Ueberheide, B. M., Fenyö, D., Alewood, P. F., and Chait, B. T. (2009). Rapid sensitive analysis of cysteine rich peptide venom components. *Proc. Natl. Acad. Sci. U.S.A.* 106, 6910–6915.
- Walewska, A., Zhang, M., Skalicky, J. J., Yoshikami, D., Olivera, B. M., and Bulaj, G. (2009). Integrated oxidative folding of cysteine/selenocysteine containing peptides: improving chemical synthesis of conotoxins. *Angew. Chem. Int. Ed. Engl.* 48, 2221–2224.
- West, P. J., Bulaj, G., Garrett, J. E., Olivera, B. M., and Yoshikami, D. (2002). Mucunotoxin SmIIIa, a potent inhibitor of tetrodotoxin-resistant sodium channels in amphibian sympathetic and sensory neurons. *Biochemistry* 41, 15388–15393.
- Wu, Y., Cao, G., Pavlicek, B., Luo, X., and Nitabach, M. N. (2008). Phase coupling of a circadian neuropeptide with rest/activity rhythms detected using a membrane-tethered spider toxin. *PLoS Biol.* 6, e273. doi: 10.1371/journal.pbio.0060273.
- Xiao, Y., and Liang, S. (2003). Inhibition of neuronal tetrodotoxin-sensitive Na<sup>+</sup> channels by two spider toxins: hainantoxin-III and hainantoxin-IV. *Eur. J. Pharmacol.* 477, 1–7.
- Zhang, M., Fiedler, B., Green, B. R., Catlin, P., Watkins, M., Garrett, J. E., Smith, B. J., Yoshikami, D., Olivera, B. M., and Bulaj, G. (2006). Structural and functional diversities among  $\mu$ -conotoxins targeting TTX-resistant sodium channels. *Biochemistry* 45, 3723–3732.
- Zuo, X., and Ji, Y. (2004). Molecular mechanism of scorpion neurotoxins acting on sodium channels: insight into their diverse selectivity. *Mol. Neurobiol.* 30, 265–278.

**Conflict of Interest Statement:** The authors declare that the research was conducted in the absence of any commercial or financial relationships that could be construed as a potential conflict of interest.

Received: 03 July 2009; paper pending published: 17 July 2009; accepted: 10 October 2009; published online: 30 October 2009.

Citation: Holford M, Auer S, Laqua M and Ibañez-Tallon I (2009) Manipulating neuronal circuits with endogenous and recombinant cell-surface tethered modulators. *Front. Mol. Neurosci.* 2:21. doi: 10.3389/neuro.02.021.2009

Copyright © 2009 Holford, Auer, Laqua and Ibañez-Tallon. This is an open-access article subject to an exclusive license agreement between the authors and the Frontiers Research Foundation, which permits unrestricted use, distribution, and reproduction in any medium, provided the original authors and source are credited.