



## OPEN ACCESS

EDITED AND REVIEWED BY  
Rossella Di Giaimo,  
University of Naples Federico II, Italy

## \*CORRESPONDENCE

Jie Wang  
✉ wangjie2014010@163.com  
Wen-Xiong Chen  
✉ chenwenxiong@gwcmc.org

<sup>†</sup>These authors have contributed equally to this work

RECEIVED 14 February 2024  
ACCEPTED 19 February 2024  
PUBLISHED 01 March 2024

## CITATION

Tian Y, Zhai Q-X, Li X-J, Shi Z, Cheng C-F, Fan C-X, Tang B, Zhang Y, He Y-Y, Li W-B, Luo S, Hou C, Chen W-X, Liao W-P and Wang J (2024) Corrigendum: *ATP6V0C* is associated with febrile seizures and epilepsy with febrile seizures plus.  
*Front. Mol. Neurosci.* 17:1385915.  
doi: 10.3389/fnmol.2024.1385915

## COPYRIGHT

© 2024 Tian, Zhai, Li, Shi, Cheng, Fan, Tang, Zhang, He, Li, Luo, Hou, Chen, Liao and Wang. This is an open-access article distributed under the terms of the [Creative Commons Attribution License \(CC BY\)](https://creativecommons.org/licenses/by/4.0/). The use, distribution or reproduction in other forums is permitted, provided the original author(s) and the copyright owner(s) are credited and that the original publication in this journal is cited, in accordance with accepted academic practice. No use, distribution or reproduction is permitted which does not comply with these terms.

# Corrigendum: *ATP6V0C* is associated with febrile seizures and epilepsy with febrile seizures plus

Yang Tian<sup>1†</sup>, Qiong-Xiang Zhai<sup>2†</sup>, Xiao-Jing Li<sup>1†</sup>, Zhen Shi<sup>1</sup>, Chuan-Fang Cheng<sup>3,4</sup>, Cui-Xia Fan<sup>3,4</sup>, Bin Tang<sup>3,4</sup>, Ying Zhang<sup>5</sup>, Yun-Yan He<sup>3,4</sup>, Wen-Bin Li<sup>3,4</sup>, Sheng Luo<sup>3,4</sup>, Chi Hou<sup>1</sup>, Wen-Xiong Chen<sup>1\*</sup>, Wei-Ping Liao<sup>3,4</sup> and Jie Wang<sup>3,4\*</sup> for the China Epilepsy Gene 1.0 Project

<sup>1</sup>Department of Neurology, Guangzhou Women and Children's Medical Center, Guangzhou Medical University, Guangzhou, China, <sup>2</sup>Department of Pediatrics, Guangdong Provincial People's Hospital, Guangdong Academy of Medical Sciences, Guangzhou, China, <sup>3</sup>Department of Neurology, Institute of Neuroscience, The Second Affiliated Hospital of Guangzhou Medical University, Guangzhou, China, <sup>4</sup>Key Laboratory of Neurogenetics and Channelopathies of Guangdong Province, Ministry of Education of China, Guangzhou, China, <sup>5</sup>The Seventh Affiliated Hospital, Sun Yat-sen University, Shenzhen, China

## KEYWORDS

***ATP6V0C*, loss of function, febrile seizures, epilepsy with febrile seizures plus, whole-exome sequencing**

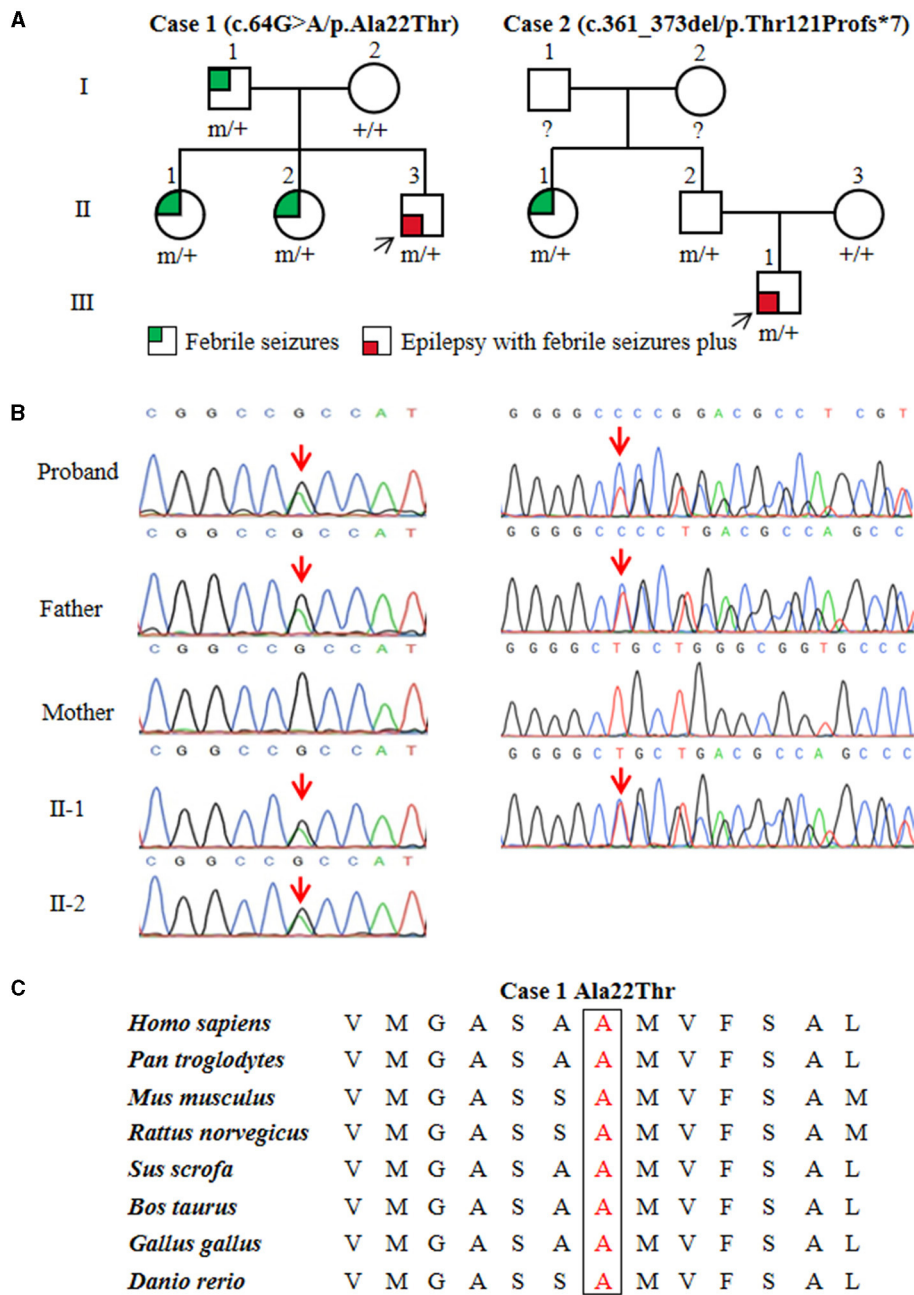
## A corrigendum on

***ATP6V0C* is associated with febrile seizures and epilepsy with febrile seizures plus**

by Tian, Y., Zhai, Q.-X., Li, X.-J., Shi, Z., Cheng, C.-F., Fan, C.-X., Tang, B., Zhang, Y., He, Y.-Y., Li, W.-B., Luo, S., Hou, C., Chen, W.-X., Liao, W.-P., and Wang, J. (2022). *Front. Mol. Neurosci.* 15:889534. doi: 10.3389/fnmol.2022.889534

In the published article, there was an error in Panel B of [Figure 1](#) as published. On the Case 2 pedigree, the mother's and father's chromatograms have been reversed. The corrected [Figure 1](#) and its caption "Figure 1 | Genetic data of cases with *ATP6V0C* mutations." appear below.

The authors apologize for this error and state that this does not change the scientific conclusions of the article in any way. The original article has been updated.



**FIGURE 1**  
 Genetic data of cases with *ATP6V0C* mutations. **(A)** Pedigrees of the two families with *ATP6V0C* mutations and their corresponding phenotypes. Individuals with mutation are marked as m/+, and those without mutation are marked as +/+. **(B)** DNA sequencing chromatograms of the two families with *ATP6V0C* mutations. Red arrows indicate the positions of the mutations. **(C)** Amino acid sequence alignment of the missense mutation shows that residue Ala22 is highly conserved in various species.