



OPEN ACCESS

EDITED AND REVIEWED BY
Matteo Becatti,
University of Firenze, Italy

*CORRESPONDENCE
Lincan Duan,
✉ duanmumuhoosan@163.com

†These authors have contributed equally
to this work

RECEIVED 16 September 2024
ACCEPTED 27 September 2024
PUBLISHED 08 October 2024

CITATION

Yuan Y, Jiang X, Tang L, Wang J and Duan L
(2024) Corrigendum: Comprehensive analysis
of the prognostic and immunological role of
PAFAH1B in pan-cancer.
Front. Mol. Biosci. 11:1497296.
doi: 10.3389/fmolb.2024.1497296

COPYRIGHT

© 2024 Yuan, Jiang, Tang, Wang and Duan.
This is an open-access article distributed
under the terms of the [Creative Commons
Attribution License \(CC BY\)](#). The use,
distribution or reproduction in other forums is
permitted, provided the original author(s) and
the copyright owner(s) are credited and that
the original publication in this journal is cited,
in accordance with accepted academic
practice. No use, distribution or reproduction
is permitted which does not comply with
these terms.

Corrigendum: Comprehensive analysis of the prognostic and immunological role of PAFAH1B in pan-cancer

Yixiao Yuan^{1†}, Xiulin Jiang^{2†}, Lin Tang^{1†}, Juan Wang¹ and Lincan Duan^{1*}

¹Department of Thoracic Surgery, The Third Affiliated Hospital of Kunming Medical University, Kunming, China, ²Key Laboratory of Animal Models and Human Disease Mechanisms of Chinese Academy of Sciences and Yunnan Province, Kunming Institute of Zoology, Kunming, China

KEYWORDS

PAFAH1B3, pan-cancer, immune cell infiltration, drug sensitivity, prognostic biomarker, multi-omics integrative analysis, cell proliferation, cell migration

A Corrigendum on

Comprehensive analysis of the prognostic and immunological role of PAFAH1B in pan-cancer

by Yuan Y, Jiang X, Tang L, Wang J and Duan L (2022). *Front. Mol. Biosci.* 8:799497. doi: 10.3389/fmolb.2021.799497

In the published article, there was an error in [Figure 12](#) as published. The representative pictures of transwell, SMCC-7721 cells in [Figure 12G](#) were presented incorrectly. The corrected [Figure 12](#) and its caption appear below.

The authors apologize for this error and state that this does not change the scientific conclusions of the article in any way. The original article has been updated.

Publisher's note

All claims expressed in this article are solely those of the authors and do not necessarily represent those of their affiliated organizations, or those of the publisher, the editors and the reviewers. Any product that may be evaluated in this article, or claim that may be made by its manufacturer, is not guaranteed or endorsed by the publisher.

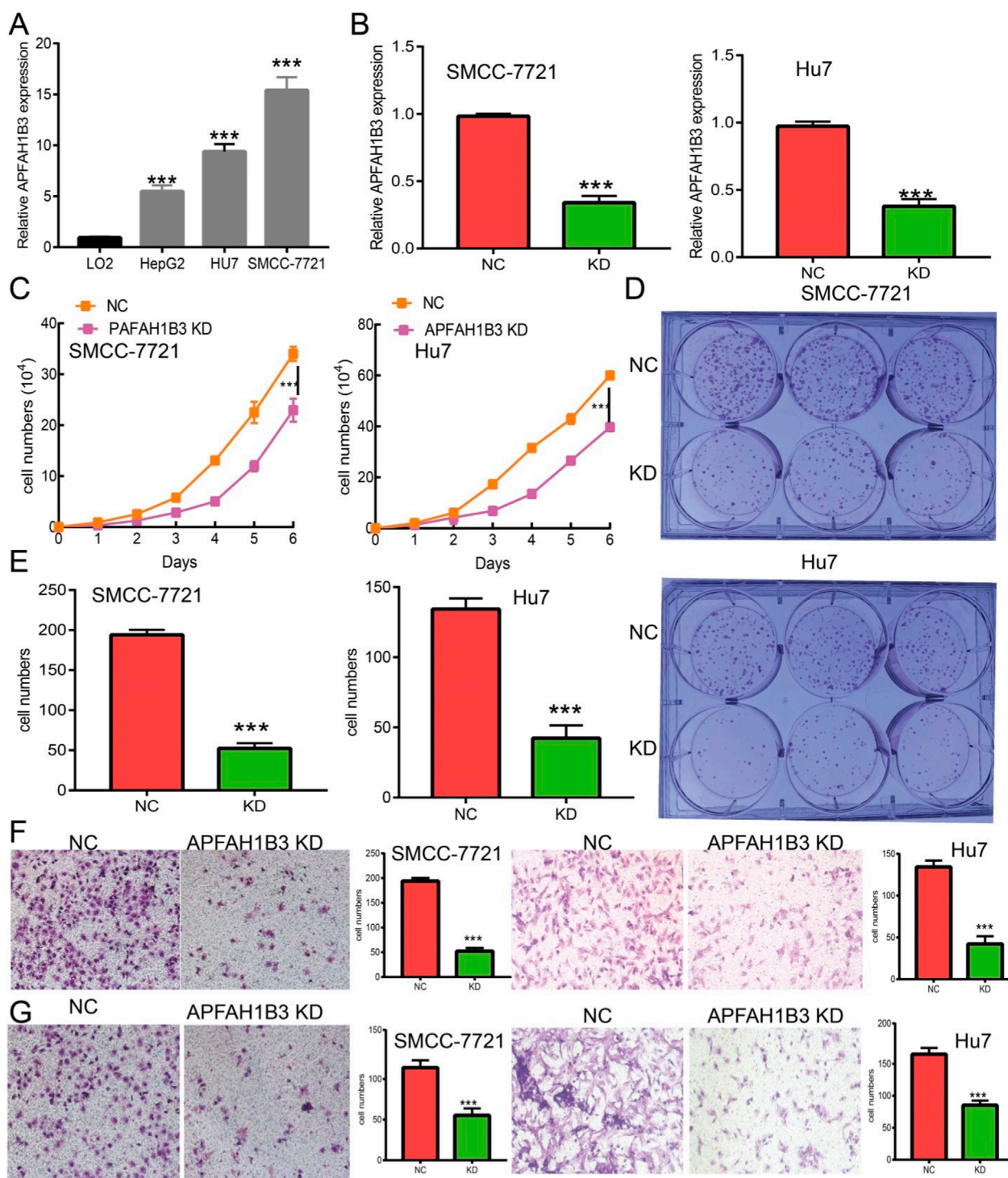


FIGURE 12 Knockdown of PAFAH1B3 inhibits LIHC progression. **(A)** The expression PAFAH1B3 in LIHC cells lines was examined by qRT-PCR assay. **(B)** Establishment of PAFAH1B3 knockdown cell lines in SMC-7721 and Hu7 verified by qRT-PCR assay. **(C)** Knockdown of PAFAH1B3 dramatically inhibits SMC-7721 and Hu7 cells proliferation examined by growth curve assay. **(D, E)** Knockdown of PAFAH1B3 dramatically inhibits SMC-7721 and Hu7 cells colony formation ability. **(F, G)** Knockdown of PAFAH1B3 dramatically inhibits SMC-7721 and Hu7 cells migration and invasion abilities.