



OPEN ACCESS

EDITED BY

Danny Ionescu,
Leibniz-Institute of Freshwater Ecology
and Inland Fisheries (IGB), Germany

REVIEWED BY

Sujata Dabolkar,
Government College of Arts, Science
and Commerce, Quepem, India
Caroline Hayley Orr,
Teesside University, United Kingdom

*CORRESPONDENCE

Iona Eunice C. Bicaldo
✉ ionacalub@gmail.com

†These authors have contributed equally to
this work and share first authorship

RECEIVED 01 April 2024

ACCEPTED 21 May 2024

PUBLISHED 09 July 2024

CITATION

Bicaldo IEC, Padilla KSAR, Tu T-H, Chen WT,
Mendoza-Pascual MU, Vicera CVB,
de Leon JR, Poblete KN, Austria ES,
Lopez MLD, Kobayashi Y, Shiah F-K,
Papa RDS, Okuda N, Wang P-L and Lin L-H
(2024) The methane-oxidizing microbial
communities of three maar lakes in tropical
monsoon Asia.
Front. Microbiol. 15:1410666.
doi: 10.3389/fmicb.2024.1410666

COPYRIGHT

© 2024 Bicaldo, Padilla, Tu, Chen,
Mendoza-Pascual, Vicera, de Leon, Poblete,
Austria, Lopez, Kobayashi, Shiah, Papa,
Okuda, Wang and Lin. This is an open-access
article distributed under the terms of the
[Creative Commons Attribution License
\(CC BY\)](https://creativecommons.org/licenses/by/4.0/). The use, distribution or reproduction
in other forums is permitted, provided the
original author(s) and the copyright owner(s)
are credited and that the original publication
in this journal is cited, in accordance with
accepted academic practice. No use,
distribution or reproduction is permitted
which does not comply with these terms.

The methane-oxidizing microbial communities of three maar lakes in tropical monsoon Asia

Iona Eunice C. Bicaldo^{1,2,*†}, Karol Sophia Agape R. Padilla^{1,3,4†},
Tzu-Hsuan Tu^{5,6}, Wan Ting Chen⁵,
Milette U. Mendoza-Pascual⁷, Carmela Vannette B. Vicera⁸,
Justine R. de Leon^{2,8}, Kamille N. Poblete¹, Eleanor S. Austria⁹,
Mark Louie D. Lopez¹⁰, Yuki Kobayashi¹¹, Fuh-Kwo Shiah¹²,
Rey Donne S. Papa^{1,2,8}, Noboru Okuda^{11,13,14}, Pei-Ling Wang^{15,16}
and Li-Hung Lin^{5,16}

¹The Graduate School, University of Santo Tomas, Manila, Philippines, ²Research Center for the Natural and Applied Sciences, University of Santo Tomas, Manila, Philippines, ³Philippine Genome Center, University of the Philippines, Quezon City, Philippines, ⁴Department of Science and Technology, Science Education Institute, Taguig, Philippines, ⁵Department of Geosciences, National Taiwan University, Taipei, Taiwan, ⁶Department of Oceanography, National Sun Yat-sen University, Kaohsiung, Taiwan, ⁷Department of Environmental Science, School of Science and Engineering, Ateneo Research Institute for Science and Engineering, Ateneo de Manila University, Quezon City, Philippines, ⁸Department of Biological Sciences, University of Santo Tomas, Manila, Philippines, ⁹Biology Department, Adamson University, Manila, Philippines, ¹⁰Department of Biochemistry and Microbiology, University of Victoria, Victoria, BC, Canada, ¹¹Center for Ecological Research, Kyoto University, Shiga, Japan, ¹²Research Center for Environmental Changes, Academia Sinica, Taipei, Taiwan, ¹³Research Center for Inland Seas, Kobe University, Kobe, Japan, ¹⁴Research Institute for Humanity and Nature, Kamigamo Motoyama, Kita Ward, Kyoto, Japan, ¹⁵Institute of Oceanography, National Taiwan University, Taipei, Taiwan, ¹⁶Research Center for Future Earth, National Taiwan University, Taipei, Taiwan

Methane-oxidizing bacteria (MOB) is a group of planktonic microorganisms that use methane as their primary source of cellular energy. For tropical lakes in monsoon Asia, there is currently a knowledge gap on MOB community diversity and the factors influencing their abundance. Herewith, we present a preliminary assessment of the MOB communities in three maar lakes in tropical monsoon Asia using Catalyzed Reporter Deposition, Fluorescence In-Situ Hybridization (CARD-FISH), 16S rRNA amplicon sequencing, and *pmoA* gene sequencing. Correlation analysis between MOB abundances and lakes' physicochemical parameters following seasonal monsoon events were performed to explain observed spatial and temporal patterns in MOB diversity. The CARD-FISH analyses detected the three MOB types (I, II, and NC10) which aligned with the results from 16S rRNA amplicons and *pmoA* gene sequencing. Among community members based on 16S rRNA genes, Proteobacterial Type I MOB (e.g., Methylococcaceae and Methylomonadaceae), Proteobacterial Type II (Methylocystaceae), Verrucomicrobial (Methylacidiphilaceae), Methylospirillum/Methylospirillum (Methylospirillumaceae), and archaeal ANME-1a were found to be the dominant methane-oxidizers in three maar lakes. Analysis of microbial diversity and distribution revealed that the community compositions in Lake Yambo vary with the seasons and are more distinct during the stratified period. Temperature, DO, and pH were significantly and inversely linked with type I MOB and Methylospirillum during stratification. Only MOB type I was influenced by monsoon changes. This research sought to establish a baseline

for the diversity and ecology of planktonic MOB in tropical monsoon Asia to better comprehend their contribution to the CH₄ cycle in tropical freshwater ecosystems.

KEYWORDS

Proteobacteria, Verrucomicrobia, NC10, CARD-FISH, 16S rRNA gene, pmoA

Introduction

Methanotrophs or methane-oxidizing bacteria (MOB) are aerobic gram-negative bacteria that utilize methane (CH₄) for carbon and energy. Due to its significant increase in production from both anthropogenic (i.e., fossil fuels, livestock, waste management, biomass combustion, rice agriculture, and biofuels) and natural sources, CH₄ contributes to at least 15–20% of the Earth's warming (Kirschke et al., 2013; Guerrero-Cruz et al., 2021). The majority of CH₄ produced in lakes is by archaeal methanogens synthesized from organic matter in anoxic sediments, originating from the primary production catalyzed by both terrestrial and aquatic cyanobacteria. The total annual CH₄ emissions from overall lakes amounts to at least 41.6 Tg, wherein high latitude lakes, temperate lakes, and subtropical/tropical lakes contribute to at least 9.4 Tg, 9.3 Tg, and 18.8 Tg of CH₄ emissions annually, respectively (data exclusive of diffusion, ebullition, and turnover measurements) (Johnson et al., 2022). Current CH₄ emission estimates in tropical lakes are still undervalued due to limited observational data, however, a pioneering study in the three maar lakes of the Philippines (Mendoza-Pascual et al., 2021) showed that profundal zones store high CH₄ concentrations, which could potentially be emitted to the atmosphere due to lake mixing caused by typhoons and seasonal winds (Forster et al., 2007; Tsai et al., 2008). Researchers have recently concentrated on MOB's vital function in reducing CH₄ emissions and studied their community compositions and influences in the past because they can oxidize CH₄ in various conditions (Costello and Lidstrom, 1999; He et al., 2020).

MOB oxidizes CH₄ when it diffuses into the water column during lake overturn, preventing CH₄ emission from lakes (Bastviken et al., 2011; Esposito et al., 2023), which makes them essential mitigators of CH₄ release from lakes' deeper layers (Trotsenko and Murrell, 2008; Mayr et al., 2020; Ming et al., 2022). MOB communities also facilitate benthic-pelagic carbon intake and sequestration in aquatic food webs (Bastviken et al., 2003; Deines and Fink, 2011). Main MOB groups include those from the Proteobacteria phylum (*Gammaproteobacteria*: Type I, X and *Alphaproteobacteria*: Type II) that initiate CH₄ oxidation through the particulate CH₄ monooxygenase enzyme (pMMO) encoded by the conserved subunit pmoA (Dedysh et al., 2000; Dumont and Murrell, 2005; Theisen and Murrell, 2005; Vorobev et al., 2011; Kojima et al., 2014; Luke et al., 2014; Kalyuzhnaya et al., 2019). Aside from these, other MOB's from the Verrucomicrobial phylum (family Methylacidiphilaceae) are ubiquitous in acidophilic environments (Dedysh et al., 2021), while MOB's from the phylum NC10 (family Methylomirabilaceae) were mostly observed in anoxic and nitrite-reducing habitats due to

their ability to catabolize CH₄ through nitrite instead of oxygen (Kojima et al., 2014).

Despite several studies being conducted in different latitudinal zones, information regarding the environmental preferences of MOB and their abundance in tropical lakes is still lacking.

Temperature, pH, CH₄, dissolved oxygen (DO), and nutrient load are the primary factors influencing MOB abundance as they are crucial for nutrient uptake (Tiwari et al., 2015; Zigah et al., 2015; Yang et al., 2019). Large reservoirs and deep lakes, like Lake Kivu, Lake Tanganyika, and Petit Saut Reservoir, are the only ones in the tropics where MOB studies have been undertaken (Dumestre et al., 2002; Durisch-Kaiser et al., 2011; Pasche et al., 2011; Zigah et al., 2015), and they await information from equally significant tropical countries, such as the Philippines. Most investigations from the said lakes used phospholipid fatty acid analysis (PLFA), flow cytometry, CARD-FISH, and 16S rRNA amplicon sequencing to pinpoint the aqueous column MOB communities, which showed type I and II MOB, and novel ANME being present in the nutrient and CH₄-rich layer of Lake Kivu, while in Lake Tanganyika presence of type I and II MOB were also observed. As seasonal variation is also a potential factor in the distribution of MOB species, studies in the aforementioned reservoirs highlighted the significance of aerobic and anaerobic CH₄ oxidation, with high aerobic oxidation during the dry season and AOM during the wet season. However, strong evidence or additional data to support these findings remain elusive. Due to a lack of information, it is vital to investigate the ecology and as the variety of the planktonic MOB community present in lakes in tropical monsoon Asia.

This study aims to present a preliminary assessment of the planktonic MOB communities in lakes within the tropical monsoon Asia region. We specifically aim to do this by using molecular techniques such as Catalyzed Reporter Deposition, Fluorescence In-Situ Hybridization (CARD-FISH), pmoA sequencing, and 16S rRNA amplicon sequencing. Here, the three maar lakes on Luzon Island in the Philippines (Lakes Yambo, Pandin, and Calibato) were selected as representative sites to demonstrate how the composition of tropical methanotrophic communities can vary seasonally (Southwest Monsoon - SW; Northeast Monsoon - NE). Different mixing regimes present in these crater lakes support distinct bacterial species that can produce or consume CH₄ from the profundal zones and be emitted from the water column into the atmosphere. Using CARD-FISH, 16S rRNA gene and diversity analyses, pmoA gene sequencing for SW (stratification) and NE (mixing) episodes, this work attempts to build vertical depth profiles of the MOB community in the three maar lakes and therefore present a baseline data of these communities in Philippine lakes. Seasonal variation and several driving factors, such as temperature, pH, DO, chlorophyll a (Chl

a), and CH₄ concentrations, were taken into consideration in the research design to identify environmental parameters that drive the diversity and composition of MOB communities.

Materials and methods

Study area and sampling collection

The Seven Maar Lakes (SMLs) of San Pablo, Laguna are a collection of lakes that are believed to have formed as a result of the phreatic eruption of Mt. Banahaw-San Cristobal (LLDA, 2014; Bannister et al., 2019; Aguilar et al., 2023), and they are located in the southern region of Luzon Island, Philippines (Figure 1). These are categorized as small lakes (surface area $\leq 2,000,000$ m²) impacted by a tropical monsoon climate (Brillo, 2016a,b; Aguilar et al., 2023) and having variable trophic statuses based on Chlorophyll a (Mendoza et al., 2019) and phytoplankton data (Navarrete et al., 2019). A simultaneous study with Aguilar et al. (2023) categorized the mixing patterns of the SMLs with Lakes Palakpakin, Bunot, Mohicap, Sampaloc, and Yambo being warm monomictic while the two deepest lakes Pandin and Calibato were categorized as meromictic. Thermal stratification of the lakes was observed during the SW monsoon from August 2018 and April and May 2022 while the complete mixing of the whole water column of Lake Yambo and the epilimnion of both Lakes Pandin and Calibato happened during the NE monsoon from November to February, which causes CH₄ concentrations to be released from the water column into the atmosphere (Forster et al., 2007; Schubert et al., 2010; Mendoza et al., 2019; Mendoza-Pascual et al., 2021; Briddon et al., 2022). Lake Yambo, the deepest of the SML monomictic lakes, was selected as the primary study site to represent warm monomictic-mesotrophic lakes, while Lakes Pandin and Calibato, which are mesotrophic-meromictic and eutrophic-meromictic, respectively, were chosen as study sites to initially assess the diversity of the MOB community during the period of stratification (SW; August 2018) and mixing (NE; February 2019) (Table 1). After the preliminary assessment in 2018 and 2019, only Lake Yambo was monitored for MOB diversity in the SW (April and May) and NE (November and December) of 2022 (Table 1). Due to its similar mixing regime (monomictic; Aguilar et al., 2023) to lakes from temperate (Lake Biwa, Japan; Yoshimizu et al., 2010; Kojima et al., 2012) and subtropical (Fei Tsui Reservoir, Taiwan; Kobayashi et al., 2016) regions, Lake Yambo was also chosen as a representative site for tropical-region freshwater systems.

An automated depth sounder (Hondex, Japan) was used to determine the maximum water depth. Temperature, DO, pH, and Chl a were measured using a multi-parameter vertical profiler (EXO 1-YSI, USA), while Mendoza-Pascual et al. (2021) simultaneously collected data on CH₄ concentrations using the same methodology as Itoh et al. (2015), which was then used as supporting data in this study. Due to gas cylinder issues and failure to maintain the necessary consumable inventory for the gas chromatography in measuring the CH₄ concentrations, Lake Yambo's CH₄ concentrations for the year 2022 were estimated using the Chl a data. As CH₄ emitted from aquatic habitats exponentially increases with Chl a content in which plant-mediated transport is about 75% of total CH₄ emissions, while ebullition

accounted for 95%. (DelSontro et al., 2018; Beaulieu et al., 2019; Yang et al., 2022), the CH₄ concentrations for the year 2022 were correlated and compared to the production data (Chl a) (Bastviken et al., 2004; Bastviken and Cole, 2008; Juutinen et al., 2009; West et al., 2016). Water samples for CARD-FISH, samples were in August 2018, February 2019, and 2022 (April, May, November, and December). The samples were subsequently treated with 2% (w/v) paraformaldehyde and filtered using a 0.20 μ m pore- sized white polycarbonate membrane filter (Merck Millipore, Germany). Using 0.20 μ m pore- sized cellulose nitrate membrane filters, water samples were collected for pmoA gene sequencing in February 2019 and for 16S rRNA gene sequencing in February 2019 and 2022 (September, November, and December).

CARD-FISH for MOB abundance

Filtered samples for CARD-FISH analyses were processed following the method of Kobayashi et al. (2016), with some modifications from the work of Pernthaler et al. (2002). Filters were embedded in 0.01% low-melting point agarose (Amann and Fuchs, 2008) and permeabilized with lysozyme (Pavlekovic et al., 2009; Tischer et al., 2012; Kubota, 2013). Probes tagged with horseradish peroxidase, specific to detect the target MOB: type I (My705 and My84), type II (M α 450), and *M. oxyfera*-like organisms (DBACT-1027) were used (Eller et al., 2001; Heyer et al., 2002; Raghoebarsing et al., 2006; Kobayashi et al., 2016). Formamide concentrations for specific MOB probes include the following: My84 and My705 (20%), M α 450 (30%), and DBACT-1027 (55%). Signal amplification was initiated using Alexa Fluor 488 tyramide for 45 mins at 37°C. Filters were mounted on glass slides containing Vectashield (Vector Laboratories, USA) and 4', 6-diamidino-2-phenylindole (DAPI). MOB counting for cell abundance was done for 10 fields of view for all depths and lakes under the Axioscope A1 epifluorescence microscope (Zeiss, Germany).

16S rRNA gene metabarcoding

Individually cut quarter-sized membranes were placed into tubes containing microbeads and lysis buffer for each depth collected. These mixtures were subjected to the bead-beating procedure for 2 min using a Tissue Lyzer (Natarajan et al., 2016; Manjarrés et al., 2022). While due to insufficient supply and equipment, the cells in 2022 were lysed using the modified bacterial lysis method of Martzy et al. (2019), which suspended the filtered cells in a TE buffer solution containing 1M Tris-HCl (pH 8.0), 0.1M EDTA, and 10% SDS (Wilson, 2001), and mixed using a vortex mixer at maximum speed for 10 min. Supernatants from each depth were placed into clean microtubes and processed using the DNeasy PowerLyzer PowerSoil Kit (Qiagen, USA) which has the same mechanism and principle as the method previously used. The QuantiFluor dsDNA System (Promega, USA) and NanoPhotometer, N60/N50 (Implen, Germany) were used for DNA quantification. The total cell concentrations at each depth were assessed to estimate the amount of DNA templates used in the polymerase chain reaction (PCR) amplification mix. The samples were amplified using

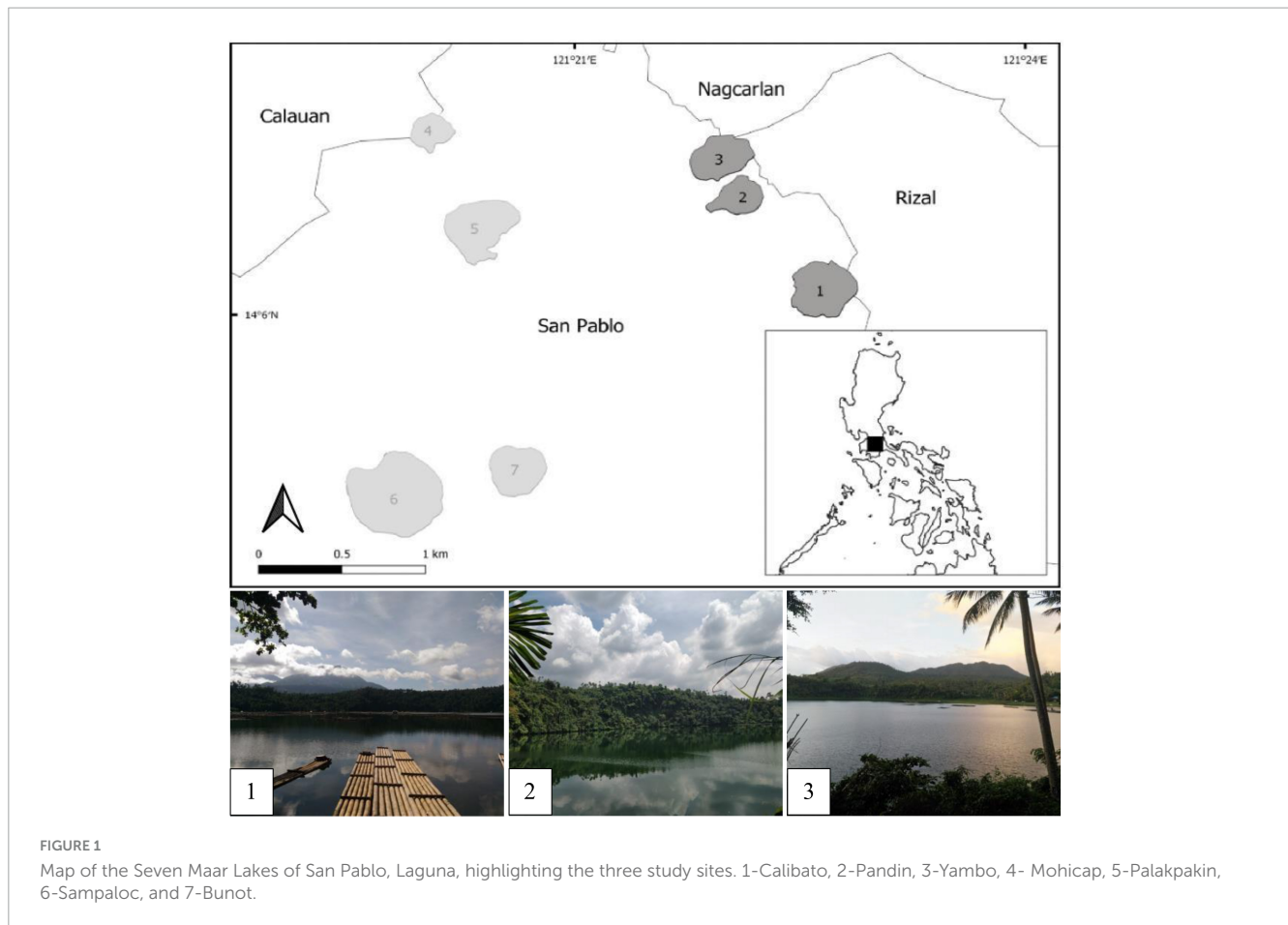


FIGURE 1 Map of the Seven Maar Lakes of San Pablo, Laguna, highlighting the three study sites. 1-Calibato, 2-Pandin, 3-Yambo, 4- Mohicap, 5-Palakpakin, 6-Sampaloc, and 7-Bunot.

TABLE 1 Limnological characteristics of the three study sites, sampling coordinates, and sampling depths for both SW and NE months.

Lake	Lake surface area (m ²)*	Maximum water depth (m)*	Sampling coordinates	Sampling depths (m)		Sampling depths (m)	
				stratified period		mixed period	
				Aug 2018	Sept, Nov, and Dec 2022	Feb 2019	Jan and Feb 2022
Yambo	305,000	33–36	14° 07' 05.42" N 121° 22' 01.63" E	0, 5, 15, 20, 25, 30, 35	0, 5, 15, 20, 25, 30, 32	5, 25, 35	5, 25, 32
Pandin	240,000	62	14° 06' 54.79" N 121° 22' 05.77" E	0, 5, 15, 30, 40, 50, 60		5, 15, 40, 60	
Calibato	430,000	131	14° 06' 14.95" N 121° 22' 38.68" E	0, 5, 15, 40, 60, 80, 100, 125		5, 40, 80, 125	

*Data from LLDA, 2014.

primer pairs F515 (5'-GTGCCAGCMGCCGCGGTAA-3') and R806 (5'-GGACTACHVGGGTWTCTAAT-3') (Caporaso et al., 2011), which targets both archaeal and bacterial communities (Gulledge et al., 2001; Tu et al., 2017). DNA template (1–4 μl) was combined with 2 μl of forward and reverse primers, ex buffer, dNTP, Taq or 10 μl of Taq Master Mix, and 2 μl nuclease-free water for a total of 20–25 μl PCR reactions per depth. The PCR process was initiated for 2 min at 95°C followed by 30 cycles of

20 s at 95°C, 1 min at 55°C, and 1 min at 72°C to commence amplification. The final extension lasted for 10 min at 72°C. Successful PCR products (~300 bp) were purified using a DNA Clean & Concentrator (Zymo Research, USA). A total of 60–70 μl of the purified sample was eluted. Sequencing of samples for 16S rRNA amplicons in 2019 and 2022 were carried out in Genomics Co., Ltd. (Taiwan) and Macrogen (Korea), respectively, using an Illumina sequencing platform.

pmoA gene cloning and sequencing

pmoA genes were amplified with forward primer A189f which was paired with two other reverse primers, A650r (Bourne et al., 2001) and A621r (Tuomivirta et al., 2009). A total of 25 µl PCR reactions were prepared. PCR amplification was initiated with 3 mins of denaturation at 94°C, followed by 30 cycles of 30 s at 94°C, 45 s at 56°C, and 1 min at 72°C. Final extensions were made for 7 mins at 72°C. Gel extraction was performed following the manufacturer's protocol for QIAquick Gel Extraction Kit (Qiagen, USA) and subjected to final purification using DNA Clean & Concentrator (Zymo Research, USA). Amplicon concentrations were determined using Quantifluor dsDNA System (Promega, USA). Ligation and transformation of pmoA gene amplicons were performed following the manufacturer's protocol for pGEM-T Easy Vector System I (Promega, USA). At least 1 to 3 µl of DNA templates were added to the ligation mix depending on the initial cell concentrations after the purification process. Successful transformants were mixed with JM109 High-Efficiency Competent Cells and streaked in individual LB agar plates with 20 mg/ml X-Gal Stock Solution, 100 mM (100×) of IPTG, and 100 mg/ml of ampicillin. At least 30 to 50 viable white colonies per depth were picked and re-incubated at LB broth containing the same components as mentioned above for at least 24 hours. Only viable reactions after the re-incubation process were processed for another round of PCR amplification using the same primer sets mentioned previously. Samples with the correct size (~450 to 500 bp) were sent to Genomics Co. Ltd., Taiwan for sequencing.

Data analyses

All 16S rRNA gene sequences were analyzed using Mothur v1.35 and Qiime2 following the protocol previously described by Estaki et al. (2020), Tu et al. (2017) and Schloss et al. (2009). Barcoded sequences were demultiplexed and low-quality reads (Phread score <25 and <33) were removed. The reads with more than two mismatches from the paired barcoded sequences were removed by noise reduction while maintaining the information from the representative reads and numbers of merged reads by pre-clustering and through the denoise_paired function in the Qiime2 (q2-dada2-plugin) (Huse et al., 2010; Callahan et al., 2016; Estaki et al., 2020). The unique reads were aligned with references to Silva NR132 SSU dataset and using QIIME 2 FeatureData[AlignedSequence] while the unaligned reads from the same region were removed and those sequenced regions beyond the primers were trimmed. Potential chimeric sequences were removed using the UCHIME program (Edgar et al., 2011). Sequencing sharing ≥97% identities were assembled into individual OTUs using the nearest neighbor joining algorithm (Schloss and Westcott, 2011; Yang et al., 2014). The sequencing (i.e., alpha rarefaction) depth was set to 30,000 based on the lowest number of sequences remaining in the sample after quality filtering and denoising (QIIME 2™) to estimate species richness. From the rarefied dataset, alpha diversity indices: number of observed OTUs, Chao-1, and Inverse Simpson indices (Chao, 1984; Faith, 1992) were computed. The Bray-Curtis dissimilarity

matrix among samples was computed, and principal coordinate analysis (PCoA) diagrams were generated using Emperor in Qiime2 (Bray and Curtis, 1957). The association between categorical metadata columns and alpha diversity data was tested, and the Faith Phylogenetic Diversity was determined, a measure of community richness and evenness metrics. Sample composition was analyzed using Permutational multivariate analysis of variance (PERMANOVA) (Costello and Lidstrom, 1999; Anderson, 2001). Taxonomic classifications of each unique sequence were designated using the Silva NR132 SSU dataset, a pre-trained Naive Bayes classifier, and the q2-feature-classifier of the Qiime 2 plugin. The said classifier was trained on the Greengenes 13_8 99% OTUs, where the sequences were trimmed to include only 250 bases from the 16S region sequenced in this analysis (the V3 and V4 region, confined by the 515F/806R primer pair). Taxonomic designations with ≥80% bootstrap values were considered valid. Sequences sharing ≥97% identities were assembled into individual OTUs using the nearest neighbor algorithm (Schloss and Westcott, 2011; Yang et al., 2014). OTUs with families that are possible CH₄-oxidizing organisms and methanogens were included in the generation of histograms using R script software and Sigma plot v11.

On the other hand, the pmoA sequences were trimmed for ambiguous ends, assembled, and categorized (OTUs at a 93% similarity cutoff), which corresponds to the 16S rRNA gene threshold of 97% similarity (Crevecoeur et al., 2017) using Sequencher 5.4.6 software. Without excluding the uncultured and cultured sample references from the database, the constructed OTUs were compared against the nucleotide BLAST database for sequence similarities. Both uncultured and cultured sequences with the highest similarities (>93% identity) from the three maar lakes samples were retrieved from the BLAST database and aligned using Muscle in MEGA v7 software. Maximum-likelihood trees were generated using 1000 bootstrap replicates using Hasegawa-Kishino-Yano (HKY) following the gamma-distribution model. All the sequences obtained from this study are available online at the NCBI database under BioProject PRJNA996764 with accession numbers SAMN36942344, SAMN36942413, SAMN36942414, SAMN36942426, SAMN36942427, SAMN36942471, SAMN36942474 for 16S rRNA gene and the pmoA gene sequences under BankIt 2770725 with GenBank accessions OR887221-OR887236.

MOB cell abundance was calculated using this formula:

$$\text{cell abundance} = \frac{\text{counts}}{(1388 * 0.09843 * 0.0001)} * (1040 * 0.09843 * 0.0001) * \left(\frac{n}{(1.25 * 1.25 * 3.14)} \right)$$

where,

counts = the number of total counts for the 10 fields of view

n = the amount of water sample (ml) passed through each filter (Kobayashi et al., 2016).

To determine the impact of the lakes' physicochemical parameters on the MOB populations, Spearman rank correlation using R studio software was applied. While the comparison of the MOB communities within the three maar lakes was done using T-Test and Kruskal-Wallis analysis of variance using R studio.

Results

Lake physicochemical profiles

Lakes Yambo, Pandin, and Calibato exhibited average water temperatures (WT) of $26.28 \pm 0.55^\circ\text{C}$, $25.44 \pm 0.64^\circ\text{C}$, and $25.45 \pm 0.34^\circ\text{C}$ in SW August 2018 (Figure 2A and Supplementary Table 1). In NE February 2019, the three lakes experienced colder WTs than the SW (Figure 2B and Supplementary Table 1). The DO conditions were based on the standards of oxygenic levels used by Liu et al., 2019 and Aguilar et al., 2023, where the freshwater oxia is >4.0 mg/L, hypoxic is 2.0–4.0 mg/L, and anoxic is <2.0 mg/L. Lakes Yambo (0–20 m), Pandin (0–5 m), and Calibato (0–5 m) had oxia epilimnion layers with DO concentrations ranging from 3.19 to 8.52 mg/L during SW (Figure 2A and Supplementary Table 1). Their deeper layers were anoxic (0.00–1.83 mg/L). While DO concentrations from surface to deeper layers remained hypoxic to oxia throughout Lake Yambo (3.44–2.37 mg L⁻¹), shallower epilimnion layers started to become anoxic in the metalimnion until near-bottom (0.40–0.07 mg L⁻¹) in Lake Pandin and (0.49–0.05 mg L⁻¹) Calibato in the NE (Figure 2B and Supplementary Table 1). However, near-bottom DO concentrations in Lake Calibato were anoxic and nearly undetectable (<0.05 mg L⁻¹) (Figure 2B and Supplementary Table 1). The pH in all three lakes ranged from acidic to neutral (0.09–7.00) on SW (August 2018), while neutral to slightly alkaline (6.99 to 8.41) on NE (February 2019) (Figures 2A, B and Supplementary Table 1). CH₄ concentrations were lowest (0.29–1.07 μmol L⁻¹) in the surface depths (0 m) of all three lakes during stratification (SW) and increased with depth (Figure 2A). In contrast, CH₄ concentrations were depleted (0.13–0.26 μmol L⁻¹) in the 0–30 m of Lake Yambo during the NE, while the near-bottom depth (35 m) had a low concentration (28.17 μmol L⁻¹) compared to the SW (378.44 μmol L⁻¹). The deeper layers of Lakes Pandin and Calibato had higher CH₄ concentrations in the NE than the SW. Despite being shallower (Pandin 62 m max, Calibato 131 m max; Table 1), Lake Pandin had greater CH₄ concentrations (Figure 2B and Supplementary Table 1) than Calibato. During the NE, CH₄ concentrations increased with depth in all three lakes, with the highest concentrations in near-bottom layers (Figure 2B and Supplementary Table 1).

In 2022, Lake Yambo continued to be monitored for its MOB community profiles. Lake Yambo's WT average in the stratified months (April and May) were $26.33 \pm 0.60^\circ\text{C}$ and $26.85 \pm 0.82^\circ\text{C}$, respectively (Figures 3A, B and Supplementary Table 1). In the NE mixed period (November and December), where stratification was weak, WT averaged $26.59 \pm 0.39^\circ\text{C}$ and $26.85 \pm 0.82^\circ\text{C}$ (Figures 3C, D and Supplementary Table 1). During the SW (April and May), Lake Yambo's DO concentrations were still high (6.69–5.20 mg L⁻¹) in the epilimnion (0–5 m) but became lower (0.60–1.63 mg L⁻¹) from the metalimnion to the hypolimnion (15–32 m) (Figures 3A, B and Supplementary Table 1). Lake Yambo in the NE has oxia epilimnion and metalimnion (0–20 m; 6.56–2.28 mg L⁻¹) and hypoxic hypolimnion (25–32 m; 1.28–0.91 mg L⁻¹) (Figures 3C, D and Supplementary Table 1). The pH in SW (April and May) was basic (9.16–8.89) in the epilimnion (0–5 m) while neutral to slightly basic (7.68–7.13) in the metalimnion to hypolimnion (Figures 3A, B and Supplementary Table 1). In NE,

neutral pH values were observed from 7.24 to 6.96 and 7.04 to 7.08 (Figures 3C, D and Supplementary Table 1). In the SW (April and May), the epilimnion (0–5 m) had 0.17–0.19 and 0.14–0.18 RFU, the middle layers (15–30 m) had –0.07 to –0.05 and –0.5 to –0.02 RFU, and the hypolimnion (32 m) had 0.42 RFU (Figures 3A, B and Supplementary Table 1). As the depth increased in the NE, Chl a concentrations increased from 0.30 to 0.32 RFU (November) and then decreased from 0.64 to 0.44 RFU in December (Figures 3C, D and Supplementary Table 1).

CARD-FISH MOB abundance analysis

During the SW stratification (August 2018), CARD-FISH results in Lake Yambo showed the highest abundances of type I MOB in the epilimnion (15 m) with 45.46×10^5 cells ml⁻¹, type II in the same 15 m depth with 6.14×10^5 cells ml⁻¹, and NC10 in the metalimnion (25 m) with 3.68×10^5 cells ml⁻¹. The sum of all three MOB types were the highest in the metalimnion (15–20 m) depths of Lake Yambo with 52.41×10^5 cells ml⁻¹ and 24.03×10^5 cells ml⁻¹, respectively (Figure 2A and Supplementary Table 2). In Lake Pandin, type I MOB was observed with the highest abundances in the deeper depths (40 m) (10.80×10^5 cells ml⁻¹), type II was present at all depths, with the highest concentrations at the surface (0 m) (21.93×10^5 cells ml⁻¹), and NC10 had its highest abundance at the surface (0 m) (9.82×10^5 cells ml⁻¹), and decreasing with depth. The sum of all three MOB types was at the maximum abundances at the surface (0 m) (40.55×10^5 cells ml⁻¹) and high at 40–50 m depths (16.00×10^5 cells ml⁻¹ and 23.96×10^5 cells ml⁻¹) of Lake Pandin (Figure 2A and Supplementary Table 2). In the entire water column of Lake Calibato, all three MOB types were also found, but type I had relatively low abundances of about 1.89×10^5 cells ml⁻¹ to 4.31×10^5 cells ml⁻¹ in the epilimnion (0 to 15 m) and increased in number as the depth increased, with its highest abundance recorded at 100–125 m (4.07×10^5 cells ml⁻¹); type II had the highest abundance at 40 m (6.56×10^5 cells ml⁻¹) while NC10 had its highest abundance at 100 m (6.17×10^5 cells ml⁻¹) (Figure 2A and Supplementary Table 2). The sum of all three MOB types were high at 40 m (11.40×10^5 cells ml⁻¹) and 100 m (16.73×10^5 cells ml⁻¹) (Figure 2A and Supplementary Table 2). On the other hand, sampling depths for all three lakes were lessened during the NE mixing period (February 2019). Lake Yambo had all three MOB types during the NE, with highest abundance of type I at 35 m (4.10×10^5 cells ml⁻¹), type II at 5 m (3.51×10^5 cells ml⁻¹), and NC10 at 25 m (2.00×10^5 cells ml⁻¹) (Figure 2B and Supplementary Table 2). Lake Pandin also had substantial concentrations of all three MOB types in the water column: type I at 15 m (2.60×10^5 cells ml⁻¹), type II at 5 m (9.09×10^5 cells ml⁻¹), and NC10 at 5 m (2.42×10^5 cells ml⁻¹). Lake Calibato had high abundances at 40 m (8.49×10^5 cells ml⁻¹) for type I, 5 m (5.93×10^5 cells ml⁻¹) for type II and 5 and 80 m (2.28×10^5 cells ml⁻¹) for NC10 (Figure 2B and Supplementary Table 2).

The presence of all three MOB types (Type I - Figure 4A, Type II - Figure 4C, and NC10 - Figure 4E) was observed in Lake Yambo for the 2022 monitoring, which was also supported by the total bacterial counts using DAPI (Figures 4B, D, E). During the SW (April and May) highest abundance of type I was observed at the metalimnion (20 m) with 3.16×10^5 cells ml⁻¹ and (15 m)

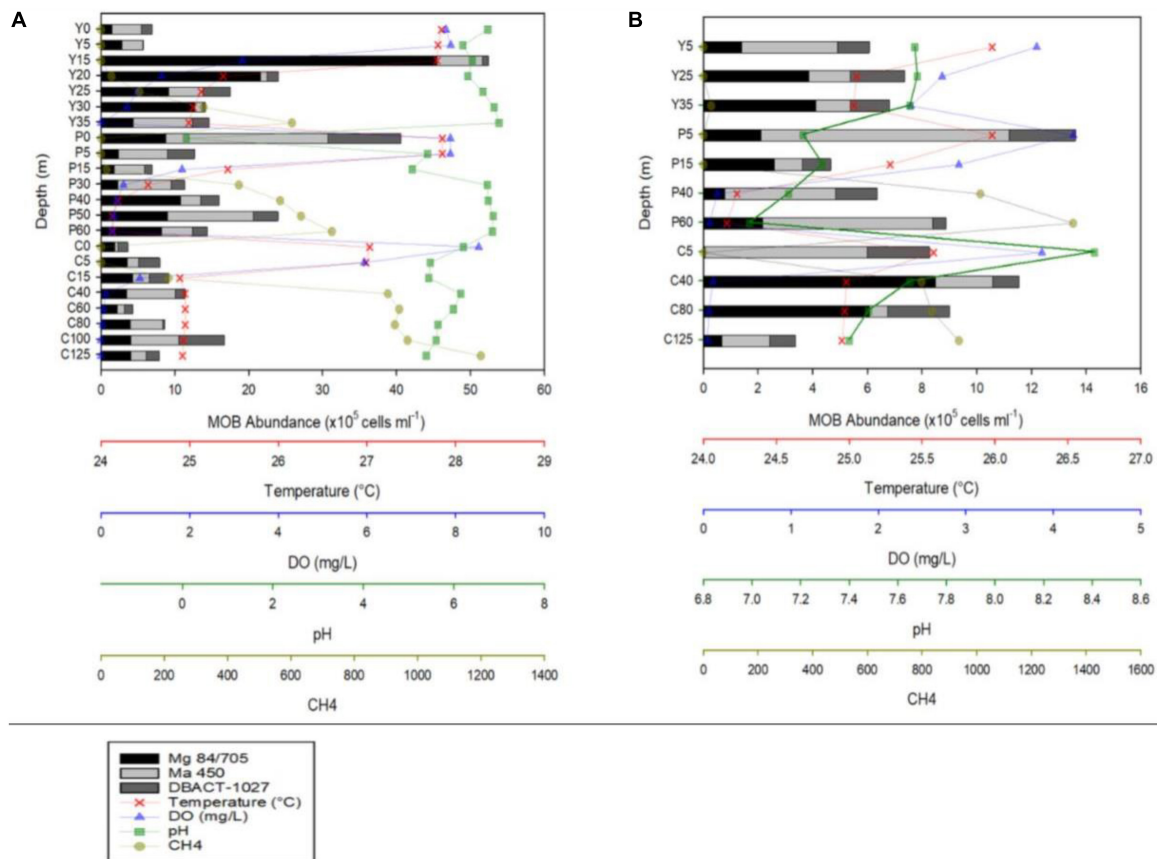


FIGURE 2

MOB abundances and vertical profiles of temperature, dissolved oxygen (DO), pH, and CH₄ concentrations during the months of August 2018 (A) and February 2019 (B) of Lakes Yambo (Y), Pandin (P), and Calibato (C).

(6.17×10^5 cells ml⁻¹) type II showed highest concentrations in the hypolimnion (30 m) with about 5.82×10^5 cells ml⁻¹ and 6.17×10^5 cells ml⁻¹; while NC10 had the highest abundance at the metalimnion depth (20 m) with 2.74×10^5 cells ml⁻¹ and (25 m) (4.67×10^5 cells ml⁻¹) (Figures 3A, B and Supplementary Table 2). Still, the highest abundances of MOB types are found in the metalimnion layer of Lake Yambo during the stratified period (April and May 2022) similar to the August 2018 data. During NE of November and December (2022) in Lake Yambo, the highest abundances of type I were observed at the hypolimnion layer (32 m) (2.35×10^5 cells ml⁻¹ and 2.53×10^5 cells ml⁻¹), type II at epilimnion (5 m) (4.63×10^5 cells ml⁻¹ and 3.75×10^5 cells ml⁻¹) and NC10 at the epilimnion (5 m) (9.40×10^5 cells ml⁻¹ and 6.42×10^5 cells ml⁻¹) (Figures 3C, D and Supplementary Table 2).

16S rRNA gene metabarcoding and bacterial diversity analysis

In NE mixing of 2019, a total of 5,313 OTUs were obtained from the $\geq 6,000$ reads per depth of the 16S rRNA gene dataset. Generally, the water column of the three lakes was mainly dominated by the following phyla: Actinobacteriota, Bacteroidota, Patescibacteria, Verrucomicrobiota, Chloroflexi, Desulfobacteriota, and several groups of Proteobacteria (Alpha-

and Pesudomonadales) (Figure 5). Groups such as Cyanobacteria and Planctomycetes dominated the epilimnion (5 m) depths of the three lakes, while those from the phylum Halobacterota dominated the deeper depths of lakes Pandin (40 and 60 m) and Calibato (125 m) (Figure 5). In 2022, the 16S rRNA gene analyses in Lake Yambo for the seven (7) depths resulted in around 597,000 total paired reads. A similar trend from 2019 was observed in the epilimnion (5 m) depth of this lake for 2022 wherein Cyanobacteria, Planctomycetes, Actinobacteria, and Bacteroidota were the dominant groups (Figure 6). At the metalimnion layer (20–25 m), Cyanobacteria, Chloroflexi, Planctomycetes, and Chlorobiota were common. Whereas in the deepest depths (30–32 m), Firmicutes, Chloroflexi, Planctomycetes, and Cyanobacteria were the most common groups. Verrucomicrobia were also detected in these depths albeit with a lower frequency.

Generally, different groups of Proteobacteria (Alpha-, Beta-, Gamma-, and Delta-) were also present in all the months sampled for all depths (Figure 6). The relative frequency of the Alpha- and Beta- Proteobacteria was higher in the upper depths (5–20 m), while Gammaproteobacteria showed higher frequencies in the 20–32 m depths, especially during NE mixing (November and December) (Figure 6).

The 16S rRNA gene dataset was further analyzed to enumerate which CH₄-oxidizing (MO) organisms were present

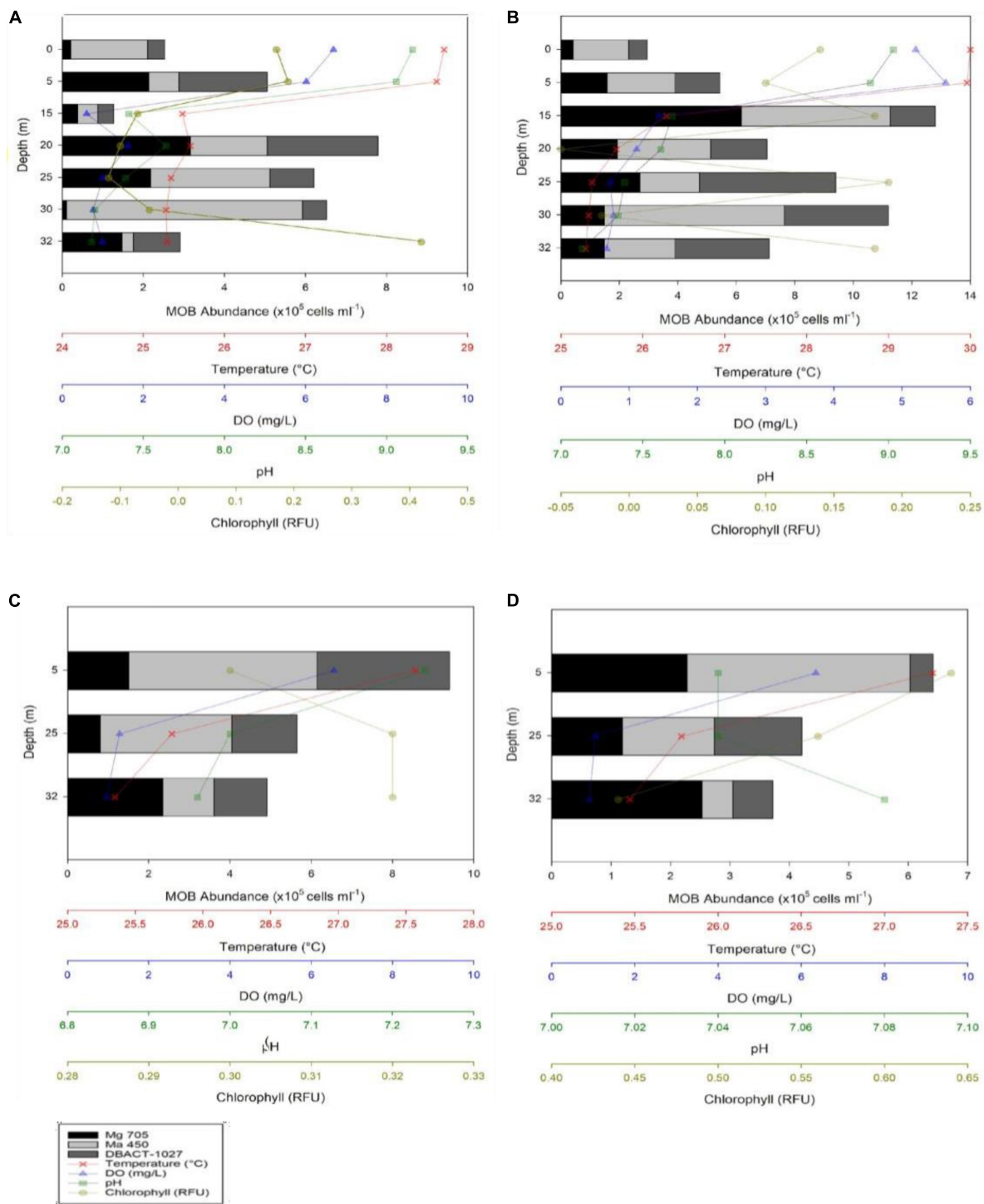


FIGURE 3
 MOB abundances and Vertical depth profiles of temperature, dissolved oxygen (DO), pH, and chlorophyll concentrations during the months of May (A), April (B), November (C), and December (D) 2022 in Lake Yambo.

in the three lakes during NE mixing of 2019. Generally, the MOB seen in almost all depths of the three lakes include the type I MOB families (and genera enclosed in parentheses) such as Methylococcaceae (*Methyloparacoccus*, *Methylogaea*, *Methylocaldum*, and uncharacterized genera) and Methylomonadaceae (*Methyloglobulus*, *Methylomonas*, and *Methylovulum*) (Figure 7). Other MOB families, such as

Methylomirabilaceae from Methylomirabilota phylum (previously NC10 phylum; Bowman, 2014; Zhu et al., 2022; Figure 7 and Supplementary Table 5), with uncultured genera (Sh765B-TzT-35 to Sh765B-TzT-38) were also seen even in the oxic depth (25 m) of lake Yambo, and deeper depths of lakes Pandin (15, 40, and 60 m) and Calibato (80 and 125 m). Uncharacterized MOB from the Methylacidiphilaceae family of the Verrucomicrobiota phylum

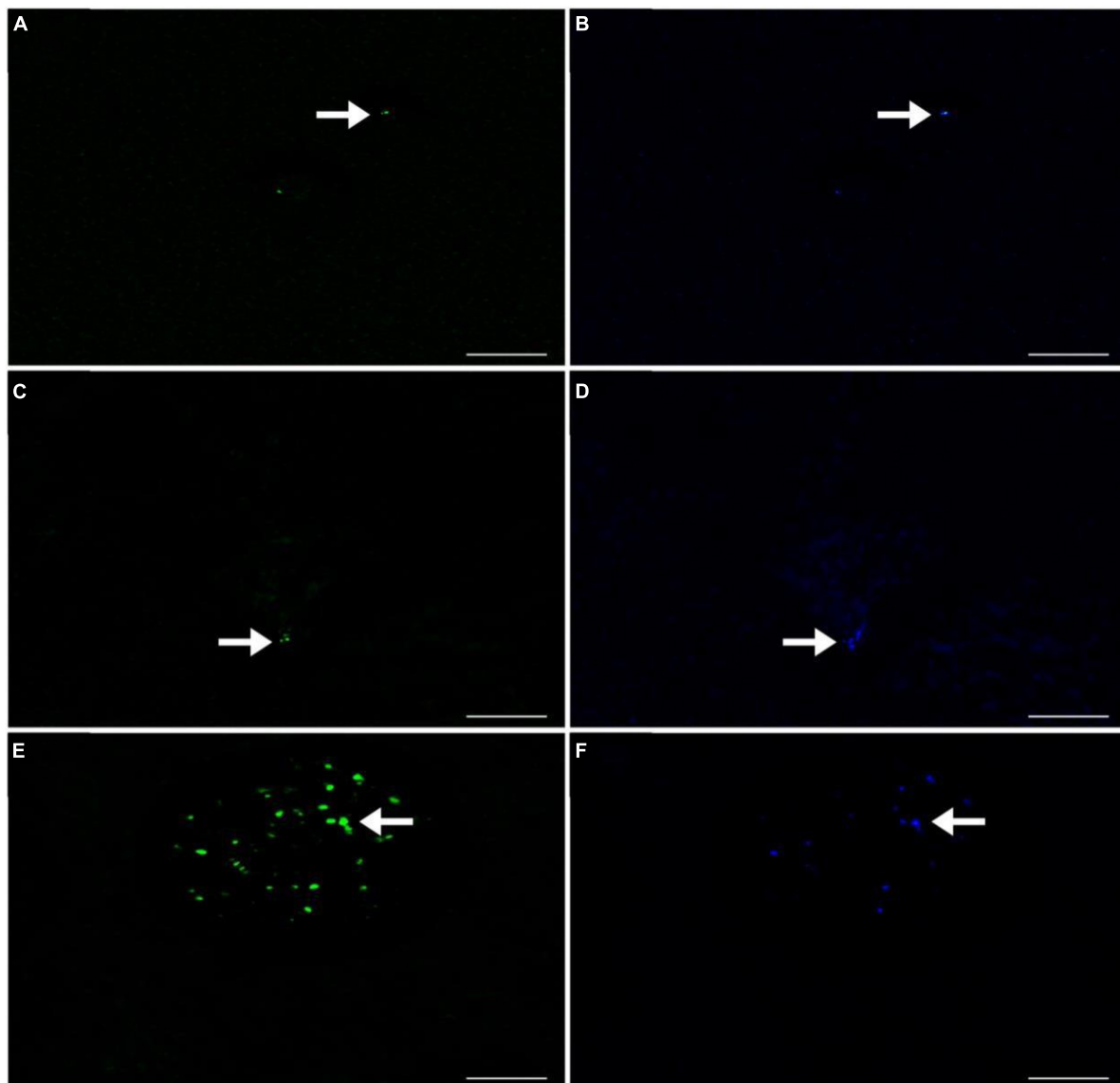


FIGURE 4

CARD-FISH Fluorescence images of the MOB detected in Lake Yambo 2022. **(A)** Type I using My705 probes labeled with Alexa Fluor™ 488 NHS Ester observed under FITC filter (green); **(B)** Type I using My705 probes labeled with Alexa Fluor™ 488 NHS Ester observed under DAPI filter (blue); **(C)** Type II using M α 450 probes labeled with Alexa Fluor™ 488 NHS Ester observed under FITC filter (green); **(D)** Type II using M α 450 probes labeled with Alexa Fluor™ 488 NHS Ester observed under DAPI filter (blue); **(E)** NC10 using DBACT-1027 probes labeled with Alexa Fluor™ 488 NHS Ester observed under FITC filter (green); **(F)** NC10 using DBACT-1027 probes labeled with Alexa Fluor™ 488 NHS Ester observed under DAPI filter (blue). Scale bars represent 3 μ m. Note: FITC - Fluorescein isothiocyanate filter (green) and DAPI - 4',6-diamidino-2-phenylindole filter (blue).

were mostly dominant in the epilimnion depths (5 m) of the three lakes, albeit generally present in other depths of the three lakes as well (Supplementary Table 5). Archaeal ANME-1a from the Halobacterota phylum was also seen in the deeper layers of lakes Pandin (15 and 40 m) and Calibato (40, 80, and 125 m) (Figure 7 and Supplementary Table 5). MOB in Lake Yambo year 2022, composed of Proteobacterial type I families Methylococcaceae (*Methylomonas* and *Methylocaldum*) which is the same genera identified in 2019, and type II Methylocystaceae (*Methylosinus*), which was not observed in the dataset from 2019. This MOB was mainly found in the bottom depths (20 and 30 m) of Lake Yambo during the SW stratification (September) but was noted to be lesser in number during the NE transition (November) and mixing

(December) (Figure 8). Presence of Proteobacterial methylotroph families or those capable of utilizing methyl-compounds like Methylobacteriaceae (*Methylobacterium* and an uncharacterized genus) and Methylophilaceae (uncharacterized genera) (Figure 8 and Supplementary Table 8) was also observed. Other MOB families like Methylospirillaceae, Methylophilaceae, and ANME-1a were not seen in any of the months sampled in 2022 for Lake Yambo. Families and genera such as Methanobacteriaceae (*Methanobacterium*), Methanoregulaceae (*Methanoregula* and *Methanolinea*), Methanocellales, Methanomassiliicoccaceae, Methanosaetaceae (*Methanosaeta*), and Methanospirillaceae (*Methanospirillum*) were detected in the three lakes during NE 2019 (Figure 7). Almost all of the species of these methanogens

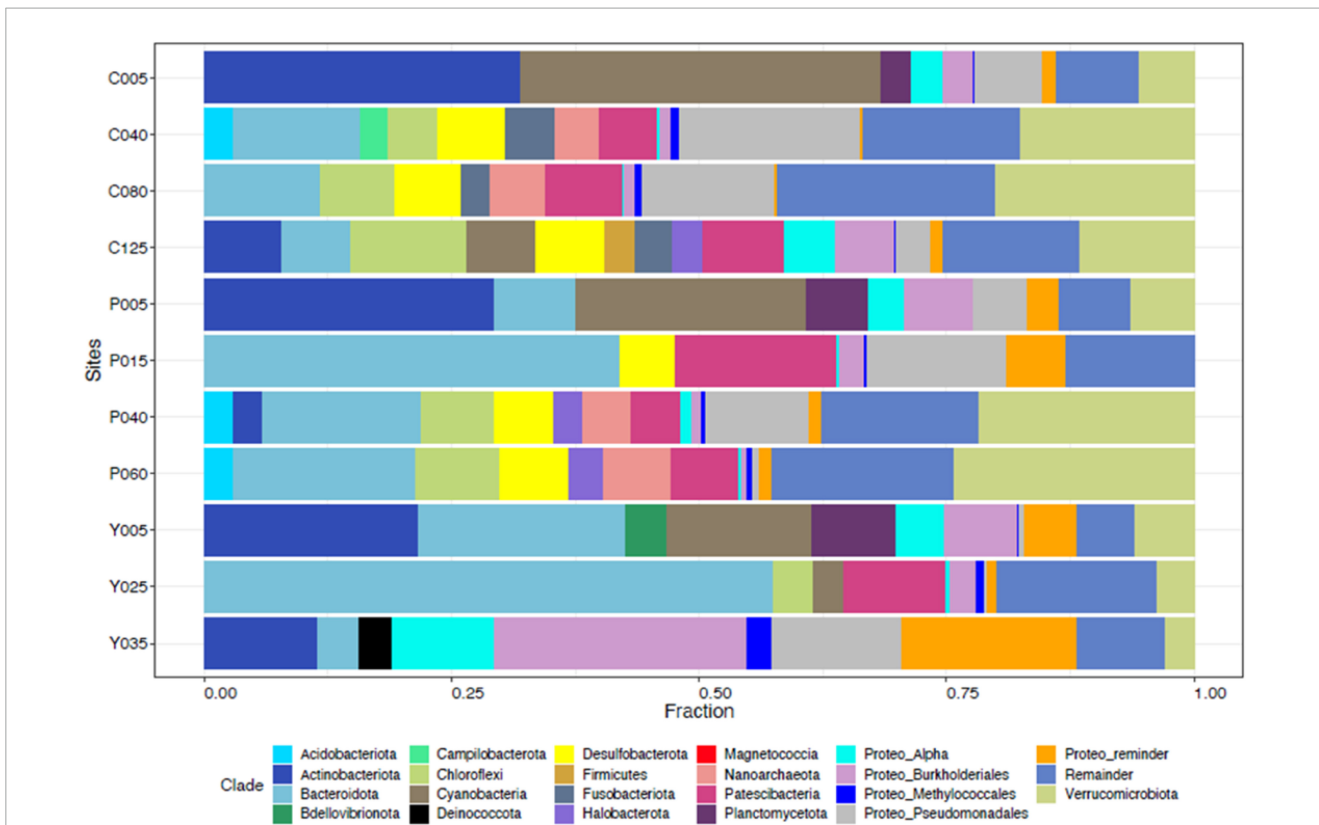


FIGURE 5 Taxonomic classification of the microbial communities in the Philippine maar lakes integrated from 16S rRNA Illumina analysis (2019). The y-axis represents the initial of each lake (C- Calibato, P- Pandin, and Y- Yambo) with the corresponding depths sampled.

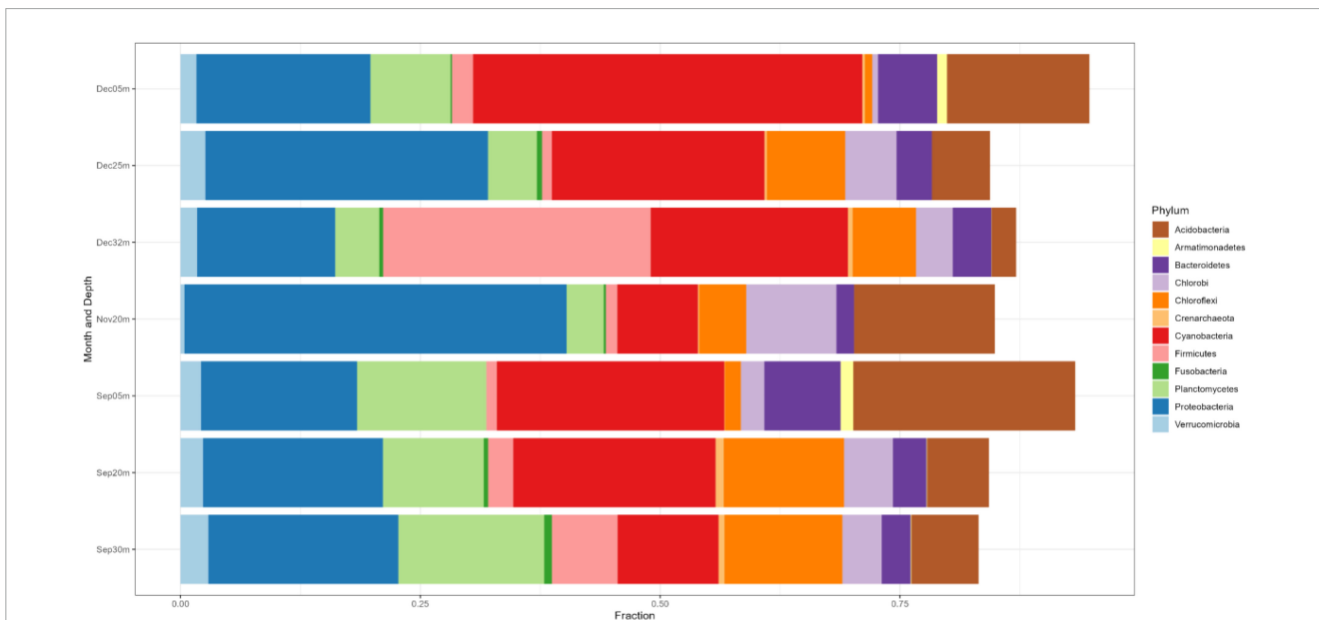


FIGURE 6 Phylum-level classification of the microbial communities in Lake Yambo during the SW stratification (September) and NE mixing (November and December) 2022 integrated from 16S rRNA analysis. The y-axis represents the sampling depths and months with the corresponding fractions of the identified species (x-axis).

were uncharacterized in nature with respect to the polyphasic approach, and their presence was still noted even in the oxic depths (25 and 35 m) of Lake Yambo, while their highest fractions

were seen in the deepest depths of lakes Pandin and Calibato (Figure 7 and Supplementary Table 5). In 2022 SW stratification (September), the presence of *Methanobacterium*, *Methanosaeta*,

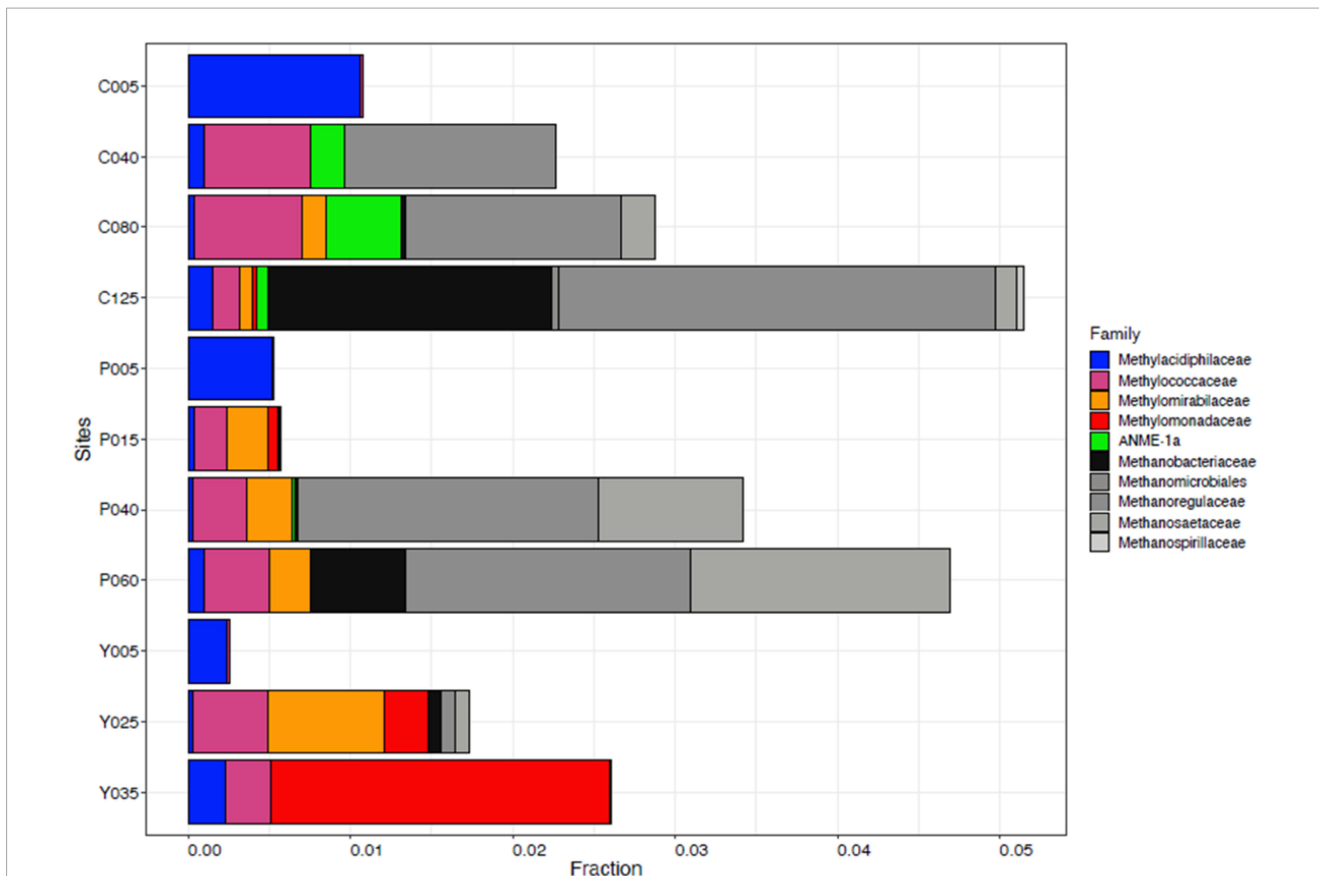


FIGURE 7 Family-level classification of MOB (colorful) and methanogens (grayscale) in Philippine maar lakes in the year 2019 integrated from 16S rRNA analysis. The y-axis represents the sampling sites (C-Calibato, P-Pandin, and Y-Yambo) with the corresponding depths sampled.

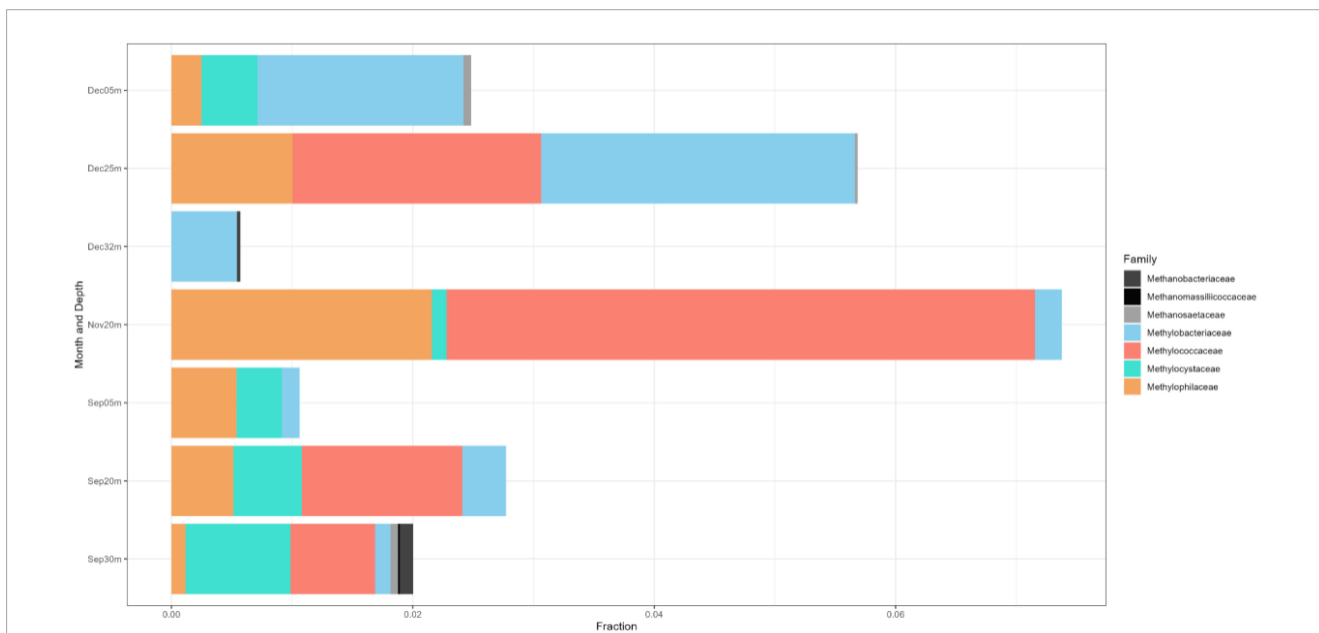


FIGURE 8 Family-level classification of the MOB (colorful) and methanogenic (grayscale) communities in Lake Yambo during the SW stratification (September) and NE mixing (November and December) 2022 integrated from 16S rRNA. The x-axis represents the corresponding number of sequencing reads and the y-axis represents the sampling months and depths.

and ambiguous taxa of Methanomassiliococcaceae was apparent in the 30 m depth of Lake Yambo, while their presence was also observed in the NE mixing (November and December) albeit in small abundances even in the oxic depths (5 m) as well as the other depths sampled for this lake (Figure 8 and Supplementary Table 8).

On the other hand, the microbial diversity in Lake Yambo was also assessed as the monitoring continued in 2022. As depicted in Supplementary Figure 1A, the Shannon index showed that the stratified month of September (~7.5) has higher bacterial diversity richness than the mixing months of November (~6.8) and December (~6.5). Pielou's evenness (Supplementary Figure 1B) in stratified conditions (September) (a median value of about 0.92) is higher than in mixed conditions (December) of about 0.81 Pielou index value (median). However, the November samples could not show the variation in species diversity and richness because it only has one sampling depth. The Pielou's evenness by depth showed that 5 m samples (~0.87 median Pielou index) have a relatively high proportion of bacterial species present compared to 20 and 30 m (~0.84 - 0.85 median Pielou index). Although bacterial communities in 30 m have lower counts of species than in 5 m, the median is in the exact center of the 30 m-box plot, indicating that species are evenly distributed at this particular depth in Lake Yambo based on the 16S rRNA analysis.

Principal Coordinate Analysis (PCoA) based on Bray Curtis dissimilarity metrics (Figure 9) revealed that the metalimnion to hypolimnion layers (20–32 m) of September and December, as well as the epilimnion layer (5 m) of both months, exhibited close distances or similarities in their community composition. It is noted that the November metalimnion (20 m) has a different bacterial community composition because it was the transition

month of Lake Yambo showing a weakly stratified vertical column (Figures 3C, 9).

Phylogenetic analyses of pmoA gene clones

A total of 598 sequences of the pmoA genes from the different depths of the three lakes constructed using primer combinations A189f/621r and A189f/650r were obtained. These sequences were grouped into 16 distinct OTUs, eight of which belonged to the type I MOB clade while the remaining eight belonged to the type II MOB lineage. Without the exclusion of uncultured MOB using the mega blast search, OTUs from the Philippine maar lakes were highly identical ($\geq 93\%$) to uncultured MOB obtained from other terrestrial and aquatic environments (Supplementary Table 7). Phylogenetic analyses of the maximum-likelihood trees support their close relative (≥ 65 bootstrap percent) with these uncultured MOB. The largest total sequences and OTUs in the three lakes appear to be closely related to sequences from the type Ib genera *Methyloparacoccus*, *Methylococcus*, *Methylogaea*, and *Methylococcaceae* bacterium, while only OTU 6 belonged to the type Ia *Methylomonas*-like genera (Figure 10, Supplementary Figures 2–4, and Supplementary Table 7). On the other hand, the type II OTUs from the maar lakes appear to be closely related to the *Methylocystis*-like genera (Figure 11, Supplementary Figures 2–4, and Supplementary Table 7). Some of the OTUs for type I MOB (OTU 6 and OTU 11) and type II (OTU 9 and OTU 14) have no immediate close relation with the other uncultured and cultured MOB (Figures 10, 11), probably representing novel groups of MOB within the type I *Methylomonas*, *Methylococcaceae*

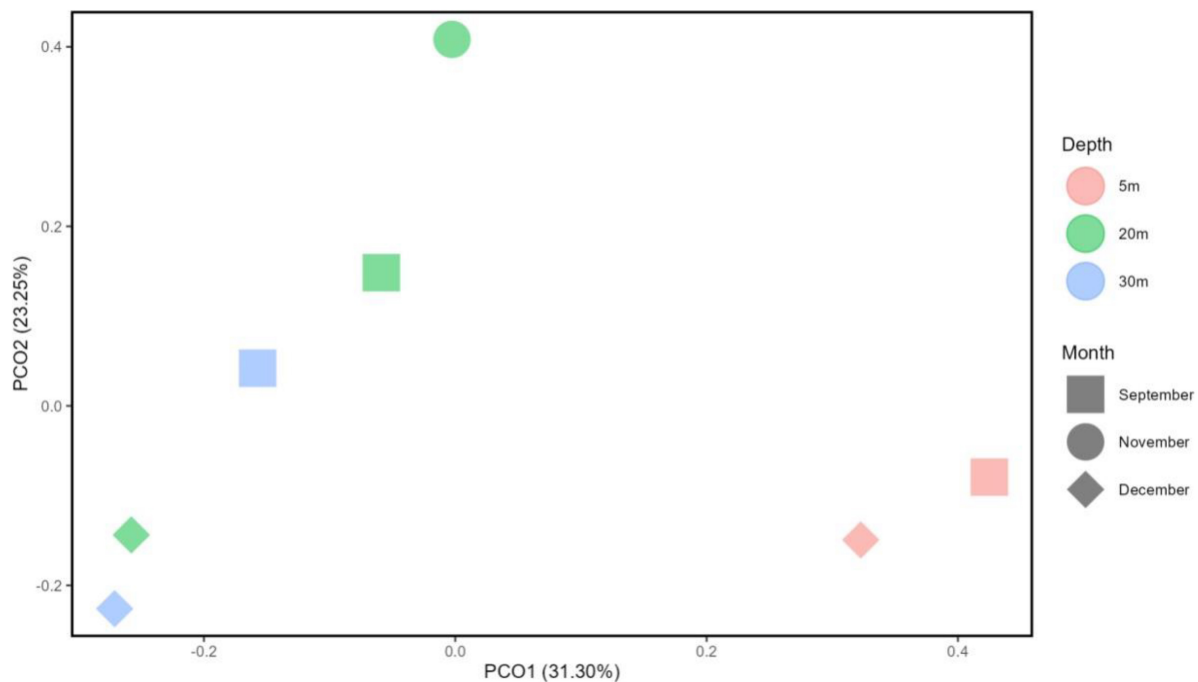
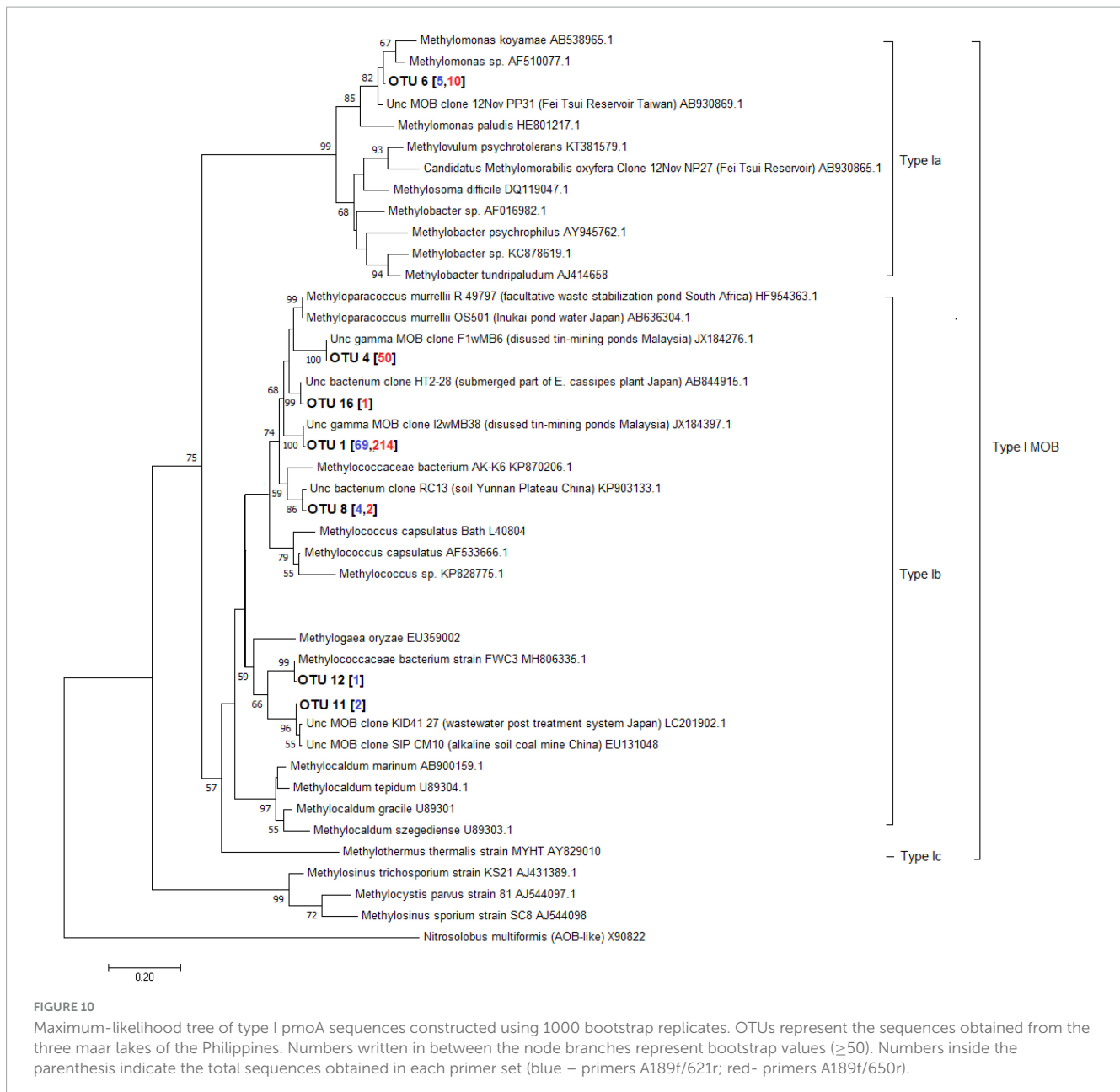


FIGURE 9

Principal component analysis (PCA) diagram using Bray-Curtis reflecting distances on the microbial OTU abundance between selected months and depths in Lake Yambo (2022).



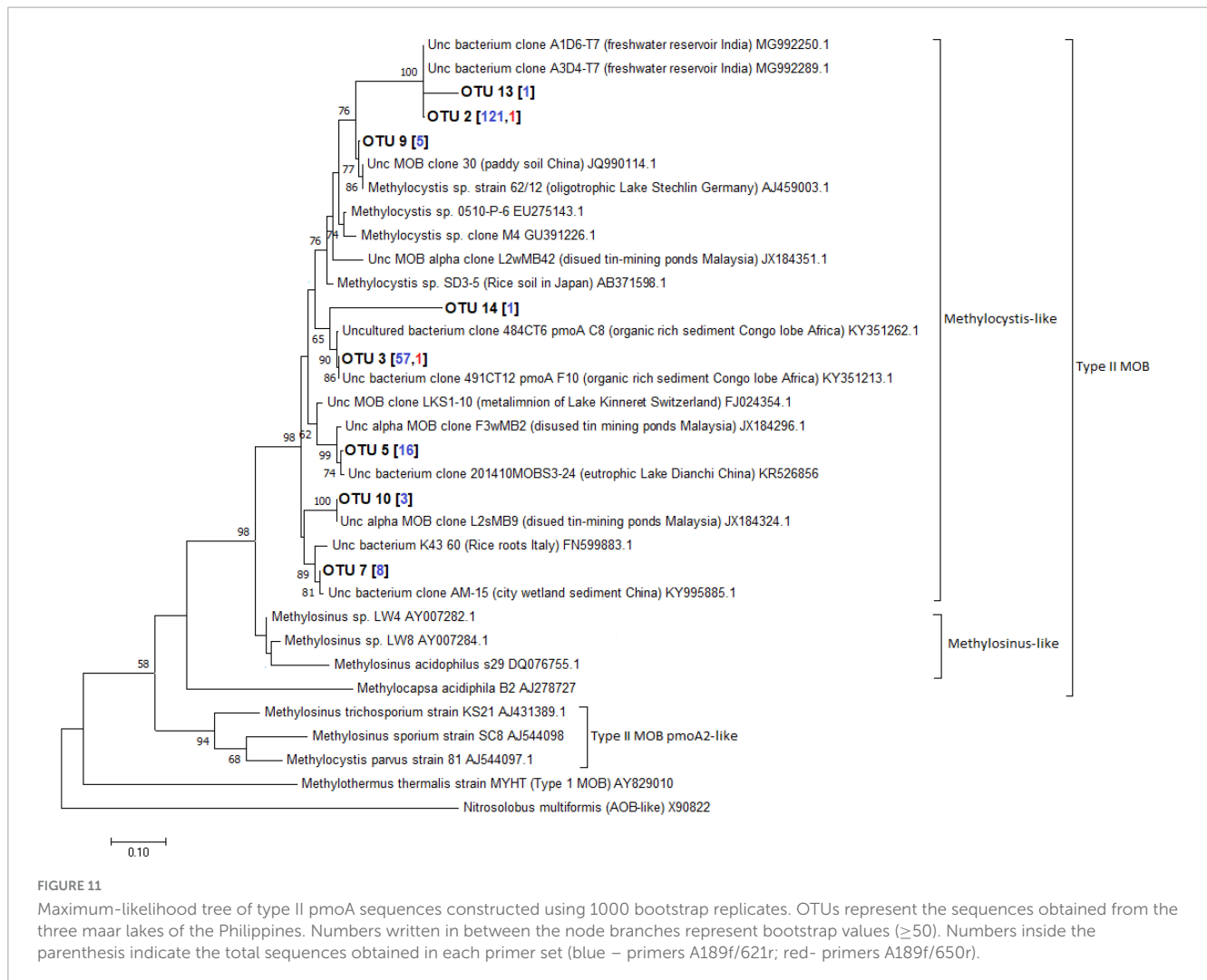
bacterium, and type II *Methylocystis* lineage (Figures 10, 11, Supplementary Figures 2–4, and Supplementary Table 7).

Correlation analysis of physicochemical parameters and MOB communities

Spearman's rank correlation showed that temperature and pH were substantially associated with type I MOB abundance from CARD-FISH data in Lake Calibato during SW stratification (August 2018) with coefficients (*p*-values) of -0.87 (0.0048) and -0.85 (0.0075), respectively (Supplementary Table 3). Physicochemical parameters and the three types of MOB were not correlated in the NE (February 2019). In the SW (May 2022), temperature, DO, and pH were substantially associated with NC10 abundances from CARD-FISH data in Lake Yambo with

coefficients (*p*-values) of -0.85 (0.0162), -0.83 (0.0212), and -0.85 (Supplementary Table 3). Likewise, all physicochemical variables and the three MOB types did not correlate in NE (November and December 2022) (Supplementary Table 3).

Moreover, the *t*-test showed that type I MOB populations were significantly different within the three maar lakes with respect to the month (August 2018 and February 2019), *p*-value = 0.04198 (Supplementary Table 4). The Kruskal-Wallis Test for Lake Yambo demonstrated that type I MOB differs also by month in 2018–2019 and 2022, *p*-value = 0.04285 (Supplementary Table 4). Nonetheless, type II MOB and NC10 populations have no significant difference in both the depths and months among the three maar lakes studied, thereby connoting that the population medians for the said MOB group are equal.



Discussion

MOB communities and comparison with other regions in the world

Temperate lakes worldwide were studied for their MOB (Methanotrophic Bacteria) community organization. In Lake Mizugaki, Japan, type I MOB, particularly *Methylobacter*, dominated the stratified water column, while in oligotrophic Lake Constance, Germany, they outnumbered type II (Kojima et al., 2009; Oswald et al., 2015). Similarly, three maar lakes investigated showed prevalent type I and II MOB throughout the water column. Specifically, Gammaproteobacterial type I MOB of the Methylococcaceae family (*Methyloparacoccus*, *Methylogaea*, *Methylocaldum*, and uncultured Methylococcaceae bacterium) and Methylomonadaceae family (*Methyloglobulus*, *Methylomonas*, and *Methylovulum*) were dominant in all three maar lakes (Figures 7, 8 and Supplementary Tables 5, 7, 8).

Anoxic environments favored type I *Methylobacter* clones (Blees et al., 2014). In the eutrophic sub-alpine monomictic Lake Rotsee, type I *Methylomonas* were the most active MOB oxidizing CH_4 . Type I MOB oxidized CH_4 in oxygen-depleted Lake Cadagno

(Dumestre et al., 2002; Milucka et al., 2015). These studies show that type I MOB *Methylobacter* oxidizes CH_4 in both oxic and anoxic temperate lakes, with NC10 as the major oxidizer. Subtropical MOB community assemblage study focused on reservoirs. 16S rRNA gene cloning and CARD-FISH found many genera of type I MOB, type II (*Methylocystis*), and NC10 Ca. *Methylomirabilis oxyfera* in Fei Tsui Reservoir (Taiwan) (Kojima et al., 2014). The novel type Ia MOB from maar lakes were closely linked to uncultured *Methylomonas* from Fei-Tsui Reservoir in Taiwan (Figure 10, Supplementary Figures 2–4, and Supplementary Table 7), along with NC10 Ca. *Methylomirabilis oxyfera* in its anoxic stratum. Kobayashi et al. (2016) found type II MOB in all depths and type I and NC10 in oxygen-depleted waters in the reservoir's vertical distribution and seasonal profile. Type II *Methylocystis*-like MOB from freshwater reservoirs in India, organic-rich sediment in Congo lobe Africa, eutrophic lakes in China, and Malaysian disused tin-mining ponds were similar to those in the sampled lakes (Figure 11, Supplementary Figures 2–4, and Supplementary Tables 7, 8; Roland et al., 2018).

In 2022, 16S rRNA gene metabarcoding using the same primer revealed type II MOB from the Methylocystaceae family (especially *Methylosinus*) in Lake Yambo (Figure 8 and Supplementary Table 8), verified by CARD-FISH (Figures 3, 4

and Supplementary Table 2). Alphaproteobacteria were discovered at varied depths, but their sequencing provided uncultured or methylophilic species (i.e., those utilizing single-carbon compounds such as *Methylobacterium*, Methylophilaceae) (Figures 6, 8 and Supplementary Table 8). *Methylobacterium* was reported to use CH₄ by Van Aken et al. (2004), but recent experiments by Iguchi et al. (2014) and Green and Ardley (2018) showed that the whole genus does not use CH₄ and does not contain the enzyme for CH₄ oxidation (*pMMO*), suggesting that it is not a MOB. The absence of the Methylocystaceae type II family from the 2019 Illumina 16S rRNA gene study may be due to the low detection of this taxon using the 16S primers and without incorporating other conserved variable regions that distinguish higher-ranking taxa. Tu et al. (2017) and Lin et al. (2018) detected Alphaproteobacteria but not Methylocystaceae using the same 16S rRNA primer set.

This research conferred on details regarding the diversity and ecological behavior of poorly studied MOBs in Philippine maar lakes, emphasizing their importance in reducing greenhouse gas emissions and regulating carbon cycling in aquatic environments. Moreover, methanogens in the deeper water column of the three maar lakes suggest CH₄ generation is not limited to silt with high CH₄ concentrations. Furthermore, studies found various microbial consortia in aquatic environments (Vuillemin et al., 2017), but none explored the tropical maar lake MOB community structure.

Driving factors of diversity for CH₄-oxidizing organisms in tropical monsoon Asia

Currently, the primary drivers for MOB community proliferation are not yet clearly established, but since the process of methanogenesis is dependent on factors such as temperature, available vegetation, nutrients, and organic material present (Marinho et al., 2009; Chang et al., 2010), these could also be the factors affecting MOB growth in these habitats as they directly increase CH₄ production (Borjesson et al., 2004; Singh, 2013; Yvon-Durocher et al., 2014; Zigah et al., 2015; Rybak et al., 2018). Temperature and pH have a significant and negative relationship with type I MOB during the SW stratification (August 2018) in Lake Calibato (Supplementary Table 3). In the SW stratification (May 2022), NC10 was observed to have a significant and negative correlation with temperature, DO, and pH. In previous studies, methanotrophic activity associated with types I and II metabolisms was found to be connected with temperature ranges (Trotsenko and Murrell, 2008; Roldán et al., 2022) where type I MOB is prevalent at psychrophilic temperatures (0–10 °C), while type II MOB are most prevalent at mesophilic temperatures (20–45°C) (Urmann et al., 2009; Graef et al., 2011; Roldán et al., 2022).

Correlation analyses conducted in 2022 for Lake Yambo showed that none of the parameters had a significant relationship with both Proteobacterial MOBs during the SW and NE monsoons.

Thermal stratification can cause anoxia to form in the bottom waters, allowing significant quantities of CH₄ to accumulate (Schubert et al., 2012). During this phase, the highest MOB activity is found at the base of the oxycline, where the CH₄ and DO counter gradients meet (Bastviken et al., 2002; Sundh et al., 2005;

Bastviken and Cole, 2008; Borrel et al., 2011). As stratification progresses, these CH₄-oxidation zones migrate within the water column (Carini et al., 2005; Guggenheim et al., 2020; Saarela et al., 2020). Similar to the 2018–2019 findings, MOB abundance is low during the mixing period because of the overturn and lower CH₄ concentrations available in the water column as it is advected into the atmosphere (Costello et al., 2002; Lambrecht et al., 2019). Additionally, weak stratification and breaking of the thermocline (De Leon et al., 2024) during NE (November and December) 2022 could possibly have contributed to the insignificant correlation of all three MOB types.

Thus, MOB community composition and dominance vary during the mixing and transition seasons due to fluctuating nutrient availability and metabolic budgets (Kaupper et al., 2021; Merino-Ibarra et al., 2021). In the three maar lakes sampled, type I MOB was found to be abundant in the oxic-anoxic regions which could be due to high-affinity cytochromes (e.g., cytochrome-*bd*-ubiquinol- oxidoreductase) that assist CH₄ oxidation under low DO concentrations (nM range) (Smith and Wrighton, 2019). Type II MOB, on the other hand, was mostly found in the oxic epilimnion (Supplementary Table 2) during lake overturn.

The 16S rRNA results for 2019 coincided with Naqvi et al. (2018) study, wherein Verrucomicrobial Methylocidiphilales (referred to as type III in their study) were dominant in the oxic upper depths of Indian dam reservoirs. Given the average temperature (25.42°C) and pH (6.73) in the three Philippine lakes sampled, which are not within the range of their optimal growth from studies (35–44°C and pH < 2.5) (Bodrossy et al., 1997; Dunfield et al., 2007; Pol et al., 2007; Van Teeseling et al., 2014), the Methylocidiphilaceae were still seen in all the depths of the lakes (Figure 7 and Supplementary Table 5). Methylocidiphilaceae also has a high affinity for hydrogen gas (H₂), which allows them to thrive in hostile volcanic environments (Mohammadi et al., 2019). Culture experiments by Gagliano et al. (2014) from volcanic geothermal soils in Italy showed uncharacterized Verrucomicrobial MOB having the same pH and temperature as the three maar lakes. Since the lakes in this study formed from the phreatic eruption of a nearby volcano, the MOB communities present could be more similar to those MOBs found in geothermal environments, albeit novel due to their non-classification into certain genera of the Methylocidiphilaceae family. Interestingly, three distinct groups of the archaeal ANME-1a were also present in the hypoxic-and anoxic depths of lakes Pandin and Calibato (Figure 7 and Supplementary Table 5), supporting the notion that not only Proteobacterial MOBs are the active MO organisms in lake ecosystems (Eller et al., 2005). These groups are frequently found in a syntrophic relationship with sulfate-reducing bacteria (Boetius et al., 2000; Orphan et al., 2001; Michaelis et al., 2002). Despite being sensitive to DO fluxes (Knittel et al., 2005) and having low affinity for CH₄ concentrations (Blumenberg et al., 2004), ANME-1a was still seen in the two-deep lakes in this study. Lastly, MOB from the phylum Methylospirillum (NC10) were both detected in the three lakes using CARD-FISH and 16S rRNA gene metabarcoding. This phylum is known to associate denitrification with anaerobic methanotrophy (Deutzmann and Schink, 2011; He et al., 2016; Graf et al., 2018). Its unique ability to oxidize CH₄ directly from nitrite reduction allowed its proliferation in anoxic conditions in freshwater sediments (Raghoebarsing et al., 2006; Ettwig et al., 2009; Shen et al., 2012). Even though *Methylospirillum*

sp. shares metabolic characteristics with proteobacterial MOBs, it belongs to the novel phylum NC10 which mediates the anaerobic oxidation of CH₄ (AOM) (Holmes et al., 2001; Rappé and Giovannoni, 2003; Van Grinsven et al., 2021). CARD-FISH conducted in this study confirmed the presence of NC10 in all the layers but with the highest quantities in the deeper depths, especially during SW stratification (Figures 2A, 3A, B). In previous studies, Methyloirabilota or NC10 in some studies were noted to be sensitive to DO fluxes, in which an increase of at least 2–8% in oxygen reduced the rate of conversion by Methyloirabilota for CH₄ and nitrite (Luesken et al., 2012), while its exposure to increased DO levels showed oxidative stress despite its oxygenic capacity (Luesken et al., 2012). Correlation analysis in this study showed that the Methyloirabilota MOB were significantly and inversely influenced by temperature, DO, and pH during the SW stratification of 2022 (Supplementary Table 3), which supports the established ranges from studies showing that Methyloirabilota proliferates in environments with pH 5–9 (Zhu et al., 2015; Welte et al., 2016). Since the anaerobic oxidation processes happen in most acidic environments, Methyloirabilota phylum also favors low pH conditions, as seen in the study, avoiding the increasing pH in the upper depths of the lakes (Figures 2, 3 and Supplementary Table 1).

The identified MOB species of the stratified month (September 2022) were observed to be more distinct and have higher sequence reads than the mixed month (December 2022) (Figure 8 and Supplementary Table 8). The frequency of methanogenic communities in Lake Yambo is also declining with the shift to the NE monsoon (Figure 8). Another probable reason for the decline in MOB in Lake Yambo during the NE monsoon is that there is higher CH₄ emitted to the atmosphere due to the lake's complete mixing, thereby limiting the supply of carbon for MOB's growth and proliferation in the vertical water column (Mendoza et al., 2019; Mendoza-Pascual et al., 2021). Moreover, the three maar lakes assessed in this study for MOB community composition showed that type I MOB is significantly affected by seasons (Supplementary Table 4). The comparison of 2018–2019 and 2022 MOB in Lake Yambo also showed that type I MOB abundance responds to changing periods. Based on the analysis, Type I abundance changed over time (Kruskal-Wallis, $p = 0.04285$) and this may be due to the changes induced by different monsoons in the Philippines (Supplementary Table 4). Type II methanotrophs are adapted to oligotrophic and fluctuating environments, but their growth rates are low in these conditions, making them K-selected organisms (Shiau et al., 2020). While Type I MOB are frequently regarded as r-selected species due to their high proliferation rates but poor ability to survive in adverse environments (Ho et al., 2012; Shiau et al., 2020).

Microbial assemblages in the three maar lakes

The seasonal variability of tropical freshwater environments also influences the diversity of bacterial communities. Results of the PCoA analysis by Bray-Curtis dissimilarity metrics in Lake Yambo showed that bacterial community compositions were different during the transition of the prevailing wind to the NE

monsoon (November) than those in September and December. In terms of bacterial species distribution and richness, however, SW stratification (September) showed higher phylogenetic variations than December mixed month (Supplementary Figures 1B, C). Microbial communities are homogeneous under mixing conditions due to the physicochemical characteristics of the water body; however, stratification reveals distinct community patterns between the nutrient-poor, warmer epilimnion, and the nutrient-rich, predominantly anoxic hypolimnion (Lee et al., 2015; Ozbayram et al., 2022).

The Illumina 16S rRNA gene metabarcoding revealed the presence of bacterial and archaeal phyla in the water column. Common freshwater bacterial phyla are also found in the studied maar lakes, where most bacteria in the epilimnion are Actinobacteria, Cyanobacteria, Bacteroidetes, three classes of Proteobacteria, and Verrucomicrobia while Firmicutes, Bacteroidetes, and Proteobacteria predominate in the hypolimnion (Figures 5, 6) (Newton et al., 2011). The continued monitoring of Lake Yambo in 2022 has shown that the diversity of bacterial communities varies depending on the depth and month (Figure 9). In fact, Shannon diversity indices (H') measured in 2022 ranged from 6 to 7.5 which means there is a high bacterial diversity in Lake Yambo that is rarely achieved (Ortiz-Burgos, 2016; Bobbitt, 2022). Epilimnion (5 m) depths in both September and December (2022) also have similar diverse bacterial taxa identified (PCoA, Pielou's evenness) (Figure 9 and Supplementary Figure 1B). The lake's upper depths were characterized by relatively warm water, where the majority of photosynthesis occurs. The phylum Cyanobacteria was more abundant in the epilimnion depths (5 m) of the three lakes and in most tropical lakes, as their physiological processes require sunlight and oxic DO levels (Madigan et al., 2008). Actinobacteria are also common in any lake of varying trophic status with their abundance inversely correlated to DO concentrations and directly correlated to nutrient availability (Allgaier et al., 2007; Wu et al., 2007; Humbert et al., 2009). The same case in the maar lakes applies wherein Actinobacteria were most abundant in the epilimnion (Figures 5, 6), as these were the depths wherein DO concentrations were adamant and CH₄ concentrations were relatively lower compared to the deeper layers of the lake (Supplementary Table 1). This is shown by the beta diversity analysis (Supplementary Figure 1D) wherein the bacterial communities in the hypolimnion layer (30–32 m) of Lake Yambo are highly dissimilar to that of the epilimnion (5 m). It is also because the epilimnion is often referred to as the trophogenic zone of lentic systems, where mixing and photosynthesis exceed respiration, whereas the hypolimnion is known as the tropholytic zone, where organic materials are synthesized and mineralized by specific bacterial species (Brusseau et al., 2019). Moreover, the occurrence of the phylum Bacteroidota was seen in nearly all the depths of the lakes, with a more dispersed and higher distribution in Lake Pandin (Figure 5). This bacterial phylum was usually found in sites from other studies wherein dissolved organic carbon and algal-derived carbon input are high (Eiler and Bertilsson, 2004; Kolmonen et al., 2004). Several members of this phylum were found to be active degraders of chitinous and plant-based materials (Tu et al., 2017). Thus, CH₄ may potentially be higher in the lake's deepest layer during the SW (April and May) due to sediment productivity. The phylum Proteobacteria, on the

other hand, were common members of bacterial communities in oceans and freshwater habitats, mainly because the bacteria in this phylum have different nutrient preferences (i.e., nitrogen and phosphorus) (Newton et al., 2011). The predominance of Alphaproteobacteria (type II) in oligotrophic and acidic humic-rich environments has been reported (Heyer et al., 2002; Hutalle-Schmelzer et al., 2010).

The abundance of the phylum Verrucomicrobia was also seen to be relatively abundant in north- temperate lakes and two shallow lakes with tropical origins (Avila et al., 2017; Chiang et al., 2018). These were also generally found in various depths of the lakes as these bacteria have various metabolic strategies and some members of this phylum are mostly seen in environments with high nutrient content (Haukka et al., 2006; Liesack et al., 2007; De Wever et al., 2008). Like proteobacterial MOB groups, Verrucomicrobial MOBs are believed to play a crucial role in CH₄-oxidation in extreme environments where they were first discovered (i.e., geothermal and volcanic environments) (Islam et al., 2008; Schmitz et al., 2021).

Conclusion and future directions

This study showed the presence of three MOB types (I, II, and NC10), and other CH₄-oxidizing microorganisms from the verrucomicrobia phylum (Methylacidiphilaceae), and archaeal ANME-1 phylum using several molecular methods in the water column of the three maar lakes.

Community compositions in Lake Yambo were found to be varied with seasonal changes and more distinct during SW stratification through analyses of microbial diversity and distribution. Physicochemical factors such as temperature and pH were significantly correlated with type I MOB, while temperature, DO, and pH were significantly correlated with NC10 during the stratification months of August 2018 and May 2022, respectively. Investigation of the entire microbial diversity of MOBs will require the combination of molecular methodologies such as enrichment cultures, nitrate mineral salts (NMS), CARD-FISH, gene sequencing (16S analysis and pmoA gene analysis), PLFA biomarkers, stable isotope probing, and mRNA-based analyses, as supplemented by various studies from other latitudinal regions. In future studies, CH₄-oxidation rates (using the ³H-CH₄ tracer technique) by these MOBs and other CH₄-oxidizers should also be considered to fully understand their roles in mitigating CH₄ emissions from tropical deep-waters with CH₄-rich and anoxic water columns. Consequently, CH₄ production by methanogens and their diversity in tropical lakes should be further investigated using a variety of primer combinations in order to completely understand how CH₄ dynamics result from the interaction of these species and possibly with other coexisting species. Other physicochemical (i.e., nitrogen and ammonium) and weather parameters should also be considered as drivers of MOB proliferation to gain a more concrete understanding of their roles in CH₄-oxidation. The very existence of MOBs and the variation in their abundances in the selected Philippine maar lakes show the potential ability of natural ecosystems to minimize the CH₄ atmospheric emissions, hence aiding in the mitigation of global warming.

Data availability statement

The datasets presented in this study can be found in online repositories. The names of the repository/repositories and accession number(s) can be found in the article/Supplementary material.

Ethics statement

This article only studied microbial population and their distribution (without intervention with human or other forms of animals), thus, do not require ethical considerations.

Author contributions

IB: Data curation, Formal analysis, Investigation, Methodology, Visualization, Writing – original draft. KP: Conceptualization, Data curation, Formal analysis, Investigation, Methodology, Visualization, Writing – original draft, Writing – review and editing. T-HT: Conceptualization, Formal analysis, Methodology, Validation, Writing – review and editing. MM-P: Conceptualization, Investigation, Methodology, Resources, Supervision, Validation, Writing – review and editing. CV: Conceptualization, Formal analysis, Investigation, Methodology, Supervision, Validation, Visualization, Writing – review and editing. JL: Conceptualization, Data curation, Formal analysis, Investigation, Methodology, Software, Validation, Visualization, Writing – review and editing. KP: Writing – original draft. EA: Conceptualization, Investigation, Methodology, Resources, Supervision, Validation, Writing – review and editing. ML: Conceptualization, Formal analysis, Methodology, Software, Validation, Visualization, Writing – original draft, Writing – review and editing. YK: Conceptualization, Methodology, Writing – review and editing. F-KS: Methodology, Investigation, Validation, Writing – review and editing. RP: Investigation, Methodology, Project administration, Resources, Supervision, Validation, Writing – original draft, Writing – review and editing. NO: Data curation, Funding acquisition, Investigation, Methodology, Project administration, Resources, Supervision, Validation, Writing – original draft, Writing – review and editing. P-LW: Data curation, Investigation, Methodology, Writing – original draft. L-HL: Data curation, Formal analysis, Funding acquisition, Investigation, Methodology, Project administration, Resources, Supervision, Validation, Writing – original draft, Writing – review and editing. WC: Data curation, Methodology, Investigation, Validation, Writing – original draft.

Funding

The field research was funded by the Japan Society for the Promotion of Science (JSPS) Grant-in-aid no. 24405007 and 16H05774 of NO as well as the DOST JSPS Joint Research Program (JRP) funding of RP (January 2021 – December 2022), Research Institute for Humanity and Nature Project (D06-14200119), and

Bilateral Joint Research Projects (JPJSBP120208602) of NO, while molecular processing and sequencing analysis were funded by the National Taiwan University, Department of Geosciences through L-HL and P-LW. Likewise, some requisite research expenditures are supported by the Taiwanese Ministry of Education (NTU-113L901005) to P-LW and the National Science and Technology Council (112-2116-M-002-010) to L-HL. Other additional research funding was shouldered by the Department of Science and Technology - Accelerated Science and Technology Human Resource Development Program (DOST-ASTHRDP), through the scholarships of the Philippine authors KSAR Padilla and MM-P. This research was also monitored by the Department of Science and Technology – National Research Council of the Philippines (DOST-NRCP).

Acknowledgments

We would like to thank the people who had helped both in the field and the laboratory, Christian Angelo Ilaa, Lovelle Francesca Vizcarra, Zayin Ben Villanueva, Patricia Lim, Anne Nicole Cabiles, Ryanne Antonette Cimatu, Zion Martin Centeno, Isabella Victoria Antonia Pablo, Ryamico Reyes, Leah Rioflorido, Kenneth Xavier Sanchez, John Claude Renan Salluta, Allyzxia Venisse Navarro, Anthony Dale To and members of the UST-Zooplankton Ecology, Systematics and Limnology Laboratory (UST-ZESL), for their substantial roles to make this research work. We would also like to thank Dr. Tohru Ikeya for providing valuable insights into the molecular processing of the samples. In our SML fieldwork samplings, we benefited significantly from the assistance of Jerome Abonal, the Comendador Family, and

the FARMC volunteers. Additionally, we highly appreciate the Research Center for Environmental Changes at Academia Sinica and Biology Department at Adamson University for allowing us to use the epifluorescence microscope and the Department of Geosciences at National Taiwan University for providing us with fundamental help and support for the bulk of the molecular work.

Conflict of interest

The authors declare that the research was conducted in the absence of any commercial or financial relationships that could be construed as a potential conflict of interest.

Publisher's note

All claims expressed in this article are solely those of the authors and do not necessarily represent those of their affiliated organizations, or those of the publisher, the editors and the reviewers. Any product that may be evaluated in this article, or claim that may be made by its manufacturer, is not guaranteed or endorsed by the publisher.

Supplementary material

The Supplementary Material for this article can be found online at: <https://www.frontiersin.org/articles/10.3389/fmicb.2024.1410666/full#supplementary-material>

References

- Aguilar, J. I., Mendoza-Pascual, M. U., Padilla, K. S. A. R., Papa, R. D. S., and Okuda, N. (2023). Mixing regimes in a cluster of seven maar lakes in tropical Monsoon Asia. *Inland Waters* 13, 47–61. doi: 10.1080/20442041.2023.2167484
- Allgaier, M., Brückner, S., Jaspers, E., and Grossart, H. P. (2007). Intra- and inter-lake variability of free-living and particle-associated Actinobacteria communities. *Environ. Microbiol.* 9, 2728–2741. doi: 10.1111/j.1462-2920.2007.01385.x
- Amann, R., and Fuchs, B. (2008). Single-cell identification in microbial communities by improved fluorescence in-situ hybridization techniques. *Nat. Rev. Microbiol.* 6, 339–348.
- Anderson, M. J. (2001). A new method for non-parametric multivariate analysis of variance. *Austral Ecol.* 26, 32–46. doi: 10.1111/j.1442-9993.2001.01070.pp.x
- Avila, M. P., Staehr, P. A., Barbosa, F. A. R., Chartone-Sauza, E., and Nascimento, A. M. A. (2017). Seasonality of freshwater bacterioplankton diversity in two tropical shallow lakes from the Brazilian Atlantic Forest. *FEMS Microbiol. Ecol.* 93, 15–28. doi: 10.1093/femsec/fiw218
- Bannister, W., McGowan, S., Santos-Borja, A. C., Quak, J., Fong, L. S., Mendoza, M., et al. (2019). Potential anthropogenic regime shifts in three freshwater lakes in tropical East Asia. *Freshw. Biol.* 64, 708–722. doi: 10.1111/fwb.13256
- Bastviken, D., and Cole, J. (2008). Fates of methane from different lake habitats: Connecting whole-lake budgets and CH₄ emissions. *J. Geophys. Res.* 113:G02024. doi: 10.1029/2007JG000608
- Bastviken, D., Cole, J., Pace, M., and Tranvik, L. (2004). Methane emissions from lakes: Dependence of lake characteristics, two regional assessments, and a global estimate. *Glob. Biogeochem. Cycles* 18:GB4009. doi: 10.1029/2004GB002238
- Bastviken, D., Ejlertsson, J., and Tranvik, L. (2002). Measurement of methane oxidation in lakes: a comparison of methods. *Environ. Sci. Technol.* 36, 3354–3361. doi: 10.1021/es010311p
- Bastviken, D., Ejlertsson, J., Sundh, I., and Tranvik, L. (2003). Methane as a source of carbon and energy for lake pelagic food webs. *Ecology* 84, 969–981.
- Bastviken, D., Tranvik, L. J., Downing, J. A., Crill, P. M., and Enrich-Prast, A. (2011). Freshwater methane emissions offset the continental carbon sink. *Science* 331:50. doi: 10.1126/science.1196808
- Beaulieu, J. J., DelSontro, T., and Downing, J. A. (2019). Eutrophication will increase methane emissions from lakes and impoundments during the 21st century. *Nat. Commun. Nat.* 10:1375. doi: 10.1038/s41467-019-09100-5
- Blees, J., Niemann, H., Wenk, C., Zopfi, J., Schubert, C., Kirf, M., et al. (2014). Micro-aerobic methane oxidation in the chemocline and anoxic water column of deep south-Alpine Lake Lugano (Switzerland). *Limnol. Oceanogr.* 59, 311–324.
- Blumenberg, M., Seifert, R., Reitner, J., Pape, T., and Michaelis, W. (2004). Membrane lipid patterns typify distinct anaerobic methanotrophic consortia. *Proc. Natl. Acad. Sci. U S A.* 101, 11111–11116. doi: 10.1073/pnas.0401188101
- Bobbitt, Z. (2022). *Shannon diversity index: Definition & example*. Statology. Available online at: <https://www.statology.org/shannon-diversity-index/> (accessed June 12, 2023).
- Bodrossy, L., Holmes, E. M., Holmes, A. J., Kovacs, K. L., and Murrell, J. C. (1997). Analysis of 16S rRNA and methane monooxygenase gene sequence reveals a novel group of thermotolerant and thermophilic methanotrophs. *Methylocaldum gen. Nov. Arch. Microbiol.* 168, 493–503. doi: 10.1007/s002030050527
- Boetius, A., Ravensschlag, K., Schubert, C., Rickert, D., Widdel, F., Gieseke, A., et al. (2000). A marine microbial consortium apparently mediating anaerobic oxidation of methane. *Nature* 407, 623–626.
- Borjesson, G., Sundh, I., and Svensson, B. (2004). Microbial oxidation of CH₄ at different temperatures in landfill cover soils. *FEMS Microbiol. Ecol.* 48, 305–312.

- Borrel, G., Jezequel, D., Biderre-Petit, C., Morel-Desrosiers, N., Morel, J., Peyret, P., et al. (2011). Production and consumption of methane in freshwater lake ecosystems. *Res. Microbiol.* 162, 832–847.
- Bourne, D. G., McDonald, I. R., and Murrell, J. C. (2001). Comparison of pmoA PCR primer sets as tools for investigating methanotroph diversity in three Danish soils. *Appl. Environ. Microbiol.* 67, 3802–3809. doi: 10.1128/AEM.67.9.3802-3809.2001
- Bowman, J. P. (2014). “The family methylococcaceae,” in *The Prokaryotes – Gammaproteobacteria*, ed. E. Rosenber (Berlin: Springer).
- Bray, J. R., and Curtis, J. T. (1957). An ordination of the upland forest communities of Southern Wisconsin. *Ecol. Monogr.* 27, 325–349. doi: 10.2307/1942268
- Briddon, C. L., Metcalfe, S., Taylor, D., Bannister, W., Cunanan, M., Santos-Borja, A. C., et al. (2022). Changing water quality and thermocline depth along an aquaculture gradient in six tropical crater lakes. *Hydrobiologia* 850, 283–299. doi: 10.1007/s10750-022-05065-7
- Brillo, B. B. C. (2016a). Development issues of a small transboundary lake: Yambo Lake of San Pablo City, Nagcarlan and Rizal, Laguna, Philippines. *Soc. Sci.* 11, 5693–5702.
- Brillo, B. B. C. (2016b). An assessment of development of a transboundary small lake: Calibato Lake, San Pablo City and Rizal, Laguna, The Philippines. *Asian J. Water, Environ. Pollut.* 13, 55–67.
- Brusseau, M., Walker, D., and Fitzsimmons, K. (2019). *Physical-Chemical Characteristics of Water*. Amsterdam: Elsevier eBooks.
- Callahan, B. J., McMurdie, P. J., Rosen, M. J., Han, A. W., Johnson, A. J. A., and Holmes, S. P. (2016). DADA2: High-resolution sample inference from Illumina amplicon data. *Nat. Methods* 13, 581–583. doi: 10.1038/nmeth.3869
- Caporaso, J. G., Lauber, C. L., Walters, W. A., Berg-Lyons, D., Lozupone, C. A., Turnbaugh, P. J., et al. (2011). Global patterns of 16S rRNA diversity at a depth of millions of sequences per sample. *Proc. Natl. Acad. Sci.* 108, 4516–4522. doi: 10.1073/pnas.1000080107
- Carini, S., Bano, N., LeCleir, G., and Joye, S. B. (2005). Aerobic methane oxidation and methanotroph community composition during seasonal stratification in Mono Lake, California (USA). *Environ. Microbiol.* 7, 1127–1138. doi: 10.1111/j.1462-2920.2005.00786.x
- Chang, C.-Y., Tung, H.-H., Tseng, I.-C., Wu, J.-H., Liu, Y.-F., and Lin, H.-M. (2010). Dynamics of methanotrophic communities in tropical alkaline landfill upland soil. *Appl. Soil Ecol.* 46, 192–199. doi: 10.1016/j.apsoil.2010.08.009
- Chao, A. (1984). Nonparametric estimation of the number of classes in a population. *Scand. J. Stat.* 11, 265–270.
- Chiang, E., Schmidt, M. L., Berry, M. A., Biddanda, B. A., Burtner, A., Johengen, T. H., et al. (2018). Verrucomicrobia are prevalent in north-temperate freshwater lakes and display class-level preferences between lake habitats. *PLoS One* 13:e0195112. doi: 10.1371/journal.pone.0195112
- Costello, A. M., and Lidstrom, M. E. (1999). Molecular characterization of functional and phylogenetic genes from natural populations of methanotrophs in lake sediments. *Appl. Environ. Microbiol.* 65, 5066–5074.
- Costello, A. M., Auman, A. J., Macalady, J. L., Scow, K. M., and Lidstrom, M. E. (2002). Estimation of methanotroph abundance in a freshwater lake sediment. *Environ. Microbiol.* 4, 443–450. doi: 10.1046/j.1462-2920.2002.00318.x
- Crevecoeur, S., Vincent, W. F., Comte, J., Matveev, A., and Lovejoy, C. (2017). Diversity and potential activity of methanotrophs in high-methane emitting permafrost thaw ponds. *PLoS One* 12:e0188223. doi: 10.1371/journal.pone.0188223
- De Leon, J., To, Peralta, E. M., and Salluta, J. C. R. (2024). Identifying the mixing regime of Lake Taal, Batangas, Philippines: Implications of lake mixing and stratification to lake management article history. *NRCP Res. J.* 23, 26–39.
- De Wever, A., Van der Gucht, K., Muylaert, K., Cousin, S., and Vyverman, W. (2008). Clone library analysis reveals an unusual composition and strong habitat partitioning of pelagic bacterial communities in Lake Tanganyika. *Aquatic Microbial Ecol.* 50, 113–122.
- Dedysh, S. N., Beletsky, A. V., Ivanova, A. A., Danilova, O. V., Begmatov, S., Kulichevskaya, I. S., et al. (2021). Peat-inhabiting verrucomicrobia of the order methylacidiphilales do not possess methanotrophic capabilities. *Microorganisms* 9:2566. doi: 10.3390/microorganisms9122566
- Dedysh, S., Liesack, W., Khmelenina, V., Suzina, N., Trotsenko, Y., Semrau, J., et al. (2000). *Methylocella palustris* gen. nov., sp. nov., a new methane-oxidizing acidophilic bacterium from peat bogs, representing a novel subtype of serine- pathway methanotrophs. *Int. J. Syst. Evol. Microbiol.* 50, 955–969. doi: 10.1099/00207713-50-3-955
- Deines, P., and Fink, P. (2011). The potential of methanotrophic bacteria to compensate for food quantity or food quality limitations on Daphnia. *Aquatic Microb. Ecol.* 65, 197–206.
- DelSontro, T., Beaulieu, J. J., and Downing, J. A. (2018). Greenhouse gas emissions from lakes and impoundments: upscaling in the face of global change. *Limnol. Oceanogr. Lett.* 3, 64–75. doi: 10.1002/lo.10073
- Deutzmann, J. S., and Schink, B. (2011). Anaerobic oxidation of methane in sediments of lake constance, an oligotrophic freshwater lake. *Appl. Environ. Microbiol.* 77, 4429–4436. doi: 10.1128/AEM.00340-11
- Dumestre, J. F., Casamayor, E. O., Massana, R., and Pedros-Alio, C. (2002). Changes in bacterial and archaeal assemblages in an equatorial river induced by the water eutrophication of Petit Saut dam reservoir (French Guiana). *Aquatic Microb. Ecol.* 26, 209–221.
- Dumont, M., and Murrell, J. C. (2005). Community-level analysis: key genes of aerobic methane oxidation. *Methods Enzymol.* 397, 413–427.
- Dunfield, P. F., Yuryev, A., Senin, P., Smirnova, A. V., Stott, M. B., Hou, S., et al. (2007). Methane oxidation by an extremely acidophilic bacterium of the phylum Verrucomicrobia. *Nature* 450, 879–882. doi: 10.1038/nature06411
- Durisch-Kaiser, E., Schmid, M., Peeters, F., Kipfer, R., Dinkel, C., Diem, T., et al. (2011). What prevents outgassing of methane to the atmosphere in Lake Tanganyika. *J. Geophys. Res.* 116. doi: 10.1029/2010JG001323
- Edgar, R. C., Haas, B. J., Clemente, J. C., Quince, C., and Knight, R. (2011). UCHIME improves sensitivity and speed of chimera detection. *Bioinformatics* 27, 2194–2200. doi: 10.1093/bioinformatics/btr381
- Eiler, A., and Bertilsson, S. (2004). Composition of freshwater bacterial communities associated with cyanobacterial blooms in four Swedish lakes. *Environ. Microbiol.* 6, 1228–1243. doi: 10.1111/j.1462-2920.2004.00657.x
- Eller, G., Kanel, L., and Kruger, M. (2005). Cooccurrence of aerobic and anaerobic methane oxidation in the water column of lake plußsee. *Appl. Environ. Microbiol.* 71, 8925–8928. doi: 10.1128/AEM.71.12.8925-8928.2005
- Eller, G., Stubner, S., and Frenzel, P. (2001). Group-specific 16S rRNA targeted probes for the detection of type I and type II methanotrophs by fluorescence in situ hybridisation. *FEMS Microbiol. Lett.* 198, 91–97.
- Esposito, C., Nijman, T. P., Veraart, A. J., Audet, J., Levi, E. E., Lauridsen, T. L., et al. (2023). Activity and abundance of methane-oxidizing bacteria on plants in experimental lakes subjected to different nutrient and warming treatments. *Aquatic Bot.* 185:103610. doi: 10.1016/j.aquabot.2022.103610
- Estaki, M., Jiang, L., Bokulich, N. A., McDonald, D., González, A., Kosciolk, T., et al. (2020). QIIME 2 enables comprehensive end-to-end analysis of diverse microbiome data and comparative studies with publicly available data. *Curr. Protoc. Bioinformatics* 70:e100. doi: 10.1002/cpbi.100
- Ettwig, K., van Allen, T., van de Pas-Schoonen, K., Jetten, M., and Strous, M. (2009). Enrichment and mechanical detection of denitrifying methanotrophic bacteria of the NC10 phylum. *Appl. Environ. Microbiol.* 75, 3656–3662. doi: 10.1128/AEM.00067-09
- Faith, D. P. (1992). Conservation evaluation and phylogenetic diversity. *Biol. Conserv.* 61, 1–10. doi: 10.1016/0006-3207(92)91201-3
- Forster, P., Ramaswamy, V., Artaxo, P., Bernsten, T., Betts, R., and Fahey, D. W. (2007). “Changes in atmospheric constituents and in radiative forcing,” in *Climate Change 2007: the Physical Science Basis. Contribution of Working Group I to the Fourth Assessment Report of the Intergovernmental Panel on Climate Change*, eds S. Solomon, M. Qin, Z. Manning, M. Chen, K. B. Marquis, and M. Averyt (Cambridge: Cambridge University Press).
- Gagliano, A. L., D’Alessandro, W., Tagliavia, M., Parello, F., and Quatrini, P. (2014). Methanotrophic activity and diversity of methanotrophs in volcanic geothermal soils at Pantelleria (Italy). *Biogeosciences* 11, 5865–5875. doi: 10.5194/bg-11-5865-2014
- Graef, C., Hestnes, A. G., Svenning, M. M., and Frenzel, P. (2011). The active methanotrophic community in a wetland from the High Arctic. *Environ. Microbiol. Rep.* 3, 466–472. doi: 10.1111/j.1758-2229.2010.00237.x
- Graf, J. S., Mayr, M. J., Marchant, H. K., Tienken, D., Hach, P. F., Brand, A., et al. (2018). Bloom of a denitrifying methanotroph, ‘Candidatus *Methyloirabialis limetica*’, in a deep stratified lake. *Environ. Microbiol.* 20, 2598–2614. doi: 10.1111/1462-2920.14285
- Green, P. N., and Ardley, J. K. (2018). Review of the genus *Methylobacterium* and closely related organisms: a proposal that some *Methylobacterium* species be reclassified into a new genus, *Methylorubrum* gen. nov. *Int. J. Syst. Evol. Microbiol.* 68, 2727–2748. doi: 10.1099/ijsem.0.002856
- Guerrero-Cruz, S., Vaksmaa, A., Horn, M. A., Niemann, H., Pijuan, M., and Ho, A. (2021). Methanotrophs: discoveries, environmental relevance, and a perspective on current and future applications. *Front. Microbiol.* 12:678057. doi: 10.3389/fmicb.2021.678057
- Guggenheim, C., Freimann, R., Mayr, M. J., Beck, K., Wehrli, B., and Bürgmann, H. (2020). Environmental and microbial interactions shape methane-oxidizing bacterial communities in a stratified lake. *Front. Microbiol.* 11:579427. doi: 10.3389/fmicb.2020.579427
- Gulledge, J., Ahmad, A., Stuedler, P. A., Pomerantz, W. J., and Cavanaugh, C. M. (2001). Family- and genus-level 16S rRNA-targeted oligonucleotide probes for ecological studies of methanotrophic bacteria. *Appl. Environ. Microbiol.* 67, 4726–4733. doi: 10.1128/AEM.67.10.4726-4733.2001
- Haukka, K., Kolmonen, E., Hyder, R., Hietala, J., Vakkilainen, K., Kairesalo, T., et al. (2006). Effect of nutrient loading on bacterioplankton community composition in lake mesocosms. *Microbial Ecology* 51, 137–146. doi: 10.1007/s00248-005-0049-7

- He, R., Su, Y., Leewis, M. C., Chu, Y. X., Wang, J., Ma, R. C., et al. (2020). Low O₂ level enhances CH₄-derived carbon flow into microbial communities in landfill cover soils. *Environ. Pollut.* 258:113676. doi: 10.1016/j.envpol.2019.113676
- He, Z., Cai, C., Wang, J., Xu, X., Zheng, P., Jetten, M. S., et al. (2016). A novel denitrifying methanotroph of the NC10 phylum and its microcolony. *Sci. Rep.* 6:32241. doi: 10.1038/srep32241
- Heyer, J., Galchenko, V. F., and Dunfield, P. F. (2002). Molecular phylogeny of type II methane-oxidizing bacteria isolated from various environments. *Microbiology* 148, 2831–2846.
- Ho, A., Kerckhof, F. M., Luke, C., Reim, A., Krause, S., Boon, N., et al. (2012). Conceptualizing functional traits and ecological characteristics of methane-oxidizing bacteria as life strategies. *Environ. Microbiol. Rep.* 5, 335–345. doi: 10.1111/j.1758-2229.2012.00370.x
- Holmes, A. J., Tujula, N. A., Holley, M., Contos, A., James, J. M., Rogers, P., et al. (2001). Phylogenetic structure of unusual aquatic microbial formations in Nullarbor caves. *Australia. Environ. Microbiol.* 3, 256–264. doi: 10.1046/j.1462-2920.2001.00187.x
- Humbert, J. F., Dorigo, U., Cecchi, P., Le Berre, B., Debroas, D., and Bouvy, M. (2009). Comparison of the structure and composition of bacterial communities from temperate and tropical freshwater ecosystems. *Environ. Microbiol.* 11, 2339–2350.
- Huse, S. M., Welch, D. M., Morrison, H. G., and Sogin, M. L. (2010). Ironing out the wrinkles in the rare biosphere through improved OTU clustering. *Environ. Microbiol.* 12, 1889–1898. doi: 10.1111/j.1462-2920.2010.02193.x
- Hutalle-Schmelzer, K. M. L., Zwirnmann, E., Krüger, A., and Grossart, H. (2010). Enrichment and cultivation of pelagic bacteria from a humic lake using phenol and humic matter additions. *FEMS Microb. Ecol.* 72, 58–73. doi: 10.1111/j.1574-6941.2009.00831.x
- Iguchi, A., Iyoda, S., Kikuchi, T., Ogura, Y., Katsura, K., Ohnishi, M., et al. (2014). A complete view of the genetic diversity of the *Escherichia coli* O-antigen biosynthesis gene cluster. *DNA Res.* 22, 101–107. doi: 10.1093/dnares/dsu043
- Islam, T., Jensen, S., Reigstad, L. J., Larsen, Ø., and Birkeland, N. K. (2008). Methane oxidation at 55°C and pH 2 by a thermoacidophilic bacterium belonging to the Verrucomicrobia phylum. *Proc. Natl. Acad. Sci. U.S.A.* 105, 300–304. doi: 10.1073/pnas.0704162105
- Itoh, M., Kobayashi, Y., Chen, T., Tokida, T., Fukui, M., Kojima, H., et al. (2015). Effect of interannual variation in winter vertical mixing on CH₄ dynamics in a subtropical reservoir. *J. Geophys. Res. Biogeosci.* 120, 1246–1261.
- Johnson, M. S., Matthews, E., Du, J., Genovese, V., and Bastviken, D. (2022). Methane emission from global lakes: new spatiotemporal data and observation-driven modeling of methane dynamics indicates lower emissions. *JGR Biogeosci.* 127:e2022JG006793. doi: 10.1029/2022JG006793
- Juutinen, S., Rantakari, M., Kortelainen, P., Huttunen, J. T., Larmola, T., Alm, J., et al. (2009). Methane dynamics in different boreal lake types. *Biogeosciences* 6, 209–223. doi: 10.5194/bg-6-209-2009
- Kalyuzhnaya, M. G., Gomez, O. A., and Murrell, J. C. (2019). “The methane-oxidizing bacteria (Methanotrophs)” in *Taxonomy, Genomics and Ecophysiology of Hydrocarbon-Degrading Microbes*, ed. T. J. McGenity (Berlin: Springer).
- Kaupper, T., Mendes, L. W., Lee, H. J., Mo, Y., Poehlein, A., Jia, Z., et al. (2021). When the going gets tough: emergence of a complex methane-driven interaction network during recovery from desiccation-rewetting. *Soil Biol. Biochem.* 153:108109. doi: 10.1016/j.soilbio.2020.108109
- Kirschke, S., Bousquet, P., Ciais, P., Saunois, M., Canadell, J. G., Dlugokencky, E. J., et al. (2013). The decades of global methane sources and sinks. *Nat. Geosci.* 6, 813–231.
- Knittel, K., Lösekann, T., Boetius, A., Kort, R., and Amann, R. (2005). Diversity and distribution of methanotrophic archaea at cold seeps. *Appl. Environ. Microbiol.* 71, 467–479.
- Kobayashi, Y., Kojima, H., Itoh, M., Okuda, N., Fukui, M., and Shiah, F. (2016). Abundance of planktonic methane-oxidizing bacteria in a subtropical reservoir. *Plankton Benthos Res.* 11, 144–146.
- Kojima, H., Iwata, T., and Fukui, M. (2009). DNA-based analysis of planktonic methanotrophs in a stratified lake. *Freshw. Biol.* 54, 1501–1509.
- Kojima, H., Tokizawa, R., Kogure, H., Kobayashi, Y., Itoh, M., Shiah, F., et al. (2014). Community structure of planktonic methane-oxidizing bacteria in a subtropical reservoir characterized by dominance of phylotype closely related to nitrite reducer. *Nat. Sci. Rep.* 4:5728. doi: 10.1038/srep05728
- Kojima, H., Tsutsumi, M., Ishikawa, K., Iwata, T., Mubmann, M., and Fukui, M. (2012). Distribution of putative denitrifying methane oxidizing bacteria in a sediment of a freshwater lake, Lake Biwa. *Syst. Appl. Microbiol.* 35, 233–238. doi: 10.1016/j.syapm.2012.03.005
- Kolmonen, E., Sivonen, K., Rapala, J., and Haukka, K. (2004). Diversity of cyanobacteria and heterotrophic bacteria in cyanobacterial blooms in Lake Joutikas, Finland. *Aquatic Microbiol. Ecol.* 36, 201–211. doi: 10.1038/ismej.2008.110
- Kubota, K. (2013). CARD-FISH for environmental microorganisms: technical advancement and future applications. *Microbes Environ.* 28, 3–12. doi: 10.1264/jsm.2012.107
- Lambrecht, N., Katsev, S., Wittkop, C., Hall, S. J., Sheik, C. S., Picard, A., et al. (2019). Biogeochemical and physical controls on methane fluxes from two ferruginous meromictic lakes. *Geobiol.* 18, 54–69. doi: 10.1111/gbi.12365
- Lee, H. J., Jeong, S. E., Kim, P. J., Madsen, E. L., and Jeon, C. O. (2015). High resolution depth distribution of Bacteria, Archaea, methanotrophs, and methanogens in the bulk and rhizosphere soils of a flooded rice paddy. *Front. Microbiol.* 6:639. doi: 10.3389/fmicb.2015.00639
- Liesack, W., Feng, L., Wang, L., and Alam, M. (2007). Methane oxidation by an extremely acidophilic bacterium of the phylum Verrucomicrobia. *Nat. Lett.* 450, 879–882. doi: 10.1038/nature06411
- Lin, Y., Tu, T., Wei, C., Rumble, D., Lin, L., and Wang, P. (2018). Steep redox gradient and biogeochemical cycling driven by deeply sourced fluids and gases in a terrestrial mud volcano. *FEMS Microbiol. Ecol.* 94:fy171. doi: 10.1093/femsec/fiy171
- Liu, J., Diao, Z., Xu, X., and Xie, Q. (2019). Effects of dissolved oxygen, salinity, nitrogen and phosphorus on the release of heavy metals from coastal sediments. *Sci. Total Environ.* 666, 894–901. doi: 10.1016/j.scitotenv.2019.02.288
- LLDA (2014). *Laguna Lake Development Authority. Annual Report 2014*. Quezon: LLDA.
- Luesken, F. A., Wu, M. L., Op den Camp, H. J. M., Keltjens, J. T., Stunnenberg, H., Francoijs, K.-J., et al. (2012). Effect of oxygen on the aerobic methanotroph ‘*Candidatus Methyloirabialis oxyfera*’: kinetic and transcriptional analysis. *Environ. Microbiol.* 14, 1024–1034. doi: 10.1111/j.1462-2920.2011.02682.x
- Luke, C., Frenzel, P., Ho, A., Flantis, D., Schad, P., Schneider, B., et al. (2014). Macroecology of methane-oxidizing bacteria: the β diversity of pmoA genotypes in tropical and subtropical rice paddies. *Environ. Microbiol.* 16, 72–83.
- Madigan, M. T., Martinko, J. M., Dunlap, P. V., and Clark, D. P. (2008). *Brock Biology of Microorganisms*, 12th Edn. Upper Saddle River, NJ: Prentice-Hall.
- Manjarrés, D., Montemurro, N., and Pérez, S. (2022). Development of a USE/d-SPE and targeted DIA-Orbitrap-MS acquisition methodology for the analysis of wastewater-derived organic pollutants in fish tissues and body fluids. *MethodsX* 9:101705. doi: 10.1016/j.mex.2022.101705
- Marinho, C. C., Palma Silva, C., Albertoni, E. F., Trindade, C. R., and Esteves, F. A. (2009). Seasonal dynamics of methane in the water column of two subtropical lakes differing in trophic status. *Braz. J. Biol.* 69, 281–287. doi: 10.1590/s1519-69842009000200007
- Martyz, R., Bica-Schröder, K., Pálvölgyi, D. M., Kolm, C., Jakwerth, S., and Kirschner, A. K. (2019). Simple lysis of bacterial cells for DNA-based diagnostics using hydrophilic ionic liquids. *Sci. Rep.* 9:13994. doi: 10.1038/s41598-019-50246-5
- Mayr, M. J., Zimmermann, M., Dey, J., Brand, A., Wehrli, B., and Burgmann, H. (2020). Growth and rapid succession of methanotrophs effectively limit methane release during lake overturn. *Commun. Biol.* 3:108. doi: 10.1038/s42003-020-0838-z
- Mendoza, M. U., Briones, J. C. A., Itoh, M., Padilla, K. S. A. R., Aguilar, J. I., Okuda, N., et al. (2019). Small Maar lakes of Luzon Island, Philippines: their limnological status and implications on the management of tropical lakes – a review. *Philippine J. Sci.* 148, 565–578.
- Mendoza-Pascual, M. U., Itoh, M., Aguilar, J., Padilla, K. S. A. R., Papa, R. D. S., and Okuda, N. (2021). Controlling factors of methane in tropical lakes of different depths. *J. Geophys. Res. Biogeosci.* 126:e2020JG005828. doi: 10.1029/2020jg005828
- Merino-Ibarra, M., Ramírez-Zierold, J. A., Valdespino-Castillo, P. M., Castillo-Sandoval, F. S., Guzmán-Arias, A. P., and Barjau-Aguilar, M. (2021). Vertical boundary mixing events during stratification govern heat and nutrient dynamics in a windy tropical reservoir lake with important water-level fluctuations: a long-term (2001–2021) study. *Water* 13:3011. doi: 10.3390/w13213011
- Michaelis, W., Seifert, R., Nauhaus, K., Truede, T., Thiel, V., and Blumenberg, M. (2002). Microbial reefs in the black sea fueled by anaerobic oxidation of methane. *Science* 297, 1013–1015. doi: 10.1126/science.1072502
- Milucka, J., Kirf, M., Lu, L., Krupke, A., Lam, P., Littmann, S., et al. (2015). Methane oxidation coupled to oxygenic photosynthesis in anoxic waters. *ISME J.* 9, 1991–2002.
- Ming, T., Li, W., Yuan, Q., Davies, P., de Richter, R., Peng, C., et al. (2022). Perspectives on removal of atmospheric methane. *Adv. Appl. Energy* 5:100085. doi: 10.1016/j.adapen.2022.100085
- Mohammadi, S. S., Schmitz, R. A., Pol, A., Berben, T., Jetten, M. S. M., Op, et al. (2019). The acidophilic methanotroph *Methyloirabialis tartarophylax* 4AC grows as autotroph on H₂ under microoxic conditions. *Front. Microbiol.* 10:2352. doi: 10.3389/fmicb.2019.02352
- Naqvi, S. W. A., Lam, P., Narvenkar, G., Sarkar, A., Naik, H., Pratihary, A., et al. (2018). Methane stimulates massive nitrogen loss from freshwater reservoirs in India. *Nat. Commun.* 9:1265. doi: 10.1038/s41467-018-03607-z
- Natarajan, V. P., Zhang, X., Morono, Y., Inagaki, F., and Wang, F. (2016). A modified SDS-based DNA extraction method for high quality environmental DNA from seafloor environments. *Front. Microbiol.* 7:986. doi: 10.3389/fmicb.2016.00986
- Navarrete, I. A., Dicen, G. P., Perez, T. R., Mendoza, S. M., Rallos, R. V., Labides, J. L. R., et al. (2019). Towards integrated management of a shallow tropical lake: assessment of water quality, sediment geochemistry, and phytoplankton diversity in Lake Palakpakin. *Philippines. Environ. Monitoring Assess.* 191:485. doi: 10.1007/s10661-019-7617-7

- Newton, R. J., Jones, S. E., Eiler, A., McMahon, K. D., and Bertilsson, S. (2011). A guide to the natural history of freshwater lake bacteria. *Microbiol. Mol. Biol. Rev.* 75, 14–49. doi: 10.1128/MMBR.00028-10
- Orphan, V. J., Hinrichs, K. U., Ussler, W., Paull, C. K., Taylor, L. T., Sylva, S. P., et al. (2001). Comparative analysis of methane-oxidizing archaea and sulfate-reducing bacteria in anoxic marine sediments. *Appl. Environ. Microbiol.* 67, 1922–1934. doi: 10.1128/aem.67.4.1922-1934.2001
- Ortiz-Burgos, S. (2016). “Shannon-weaver diversity index,” in *Encyclopedia of Estuaries. Encyclopedia of Earth Sciences Series*, ed. M. J. Kennish (Dordrecht: Springer).
- Oswald, K., Milucka, J., Brand, A., Littmann, S., Wehrli, B., Kuypers, M. M. M., et al. (2015). Light-dependent aerobic methane oxidation reduces methane emissions from seasonally stratified lakes. *PLoS One* 10:e0132574. doi: 10.1371/journal.pone.0132574
- Ozbayram, E. G., Köker, L., Çam, A. O., Akçaalan, R., and Albay, M. (2022). Temporal and spatial variations of the bacterial diversity in a deep Alkaline Lake. *Water* 14:4097. doi: 10.3390/w14244097
- Pasche, N., Schmid, M., Vazquez, F., Schubert, C. J., Wuest, A., Kessler, J. D., et al. (2011). Methane sources and sinks in Lake Kivu. *J. Geophys. Res.* 116:G03006. doi: 10.1029/2011JG001690
- Pavlekovic, M., Schmid, M. C., Schmider-Poignee, N., Spring, S., Pilhofer, M., Gaul, T., et al. (2009). Optimization of three FISH procedures for in situ detection of anaerobic ammonium oxidizing bacteria in biological wastewater treatment. *J. Microbiol. Methods* 78, 119–126. doi: 10.1016/j.mimet.2009.04.003
- Pernthaler, A., Pernthaler, J., and Amann, R. (2002). Fluorescence in-situ hybridization and catalyzed reporter deposition for the identification of marine bacteria. *Appl. Environ. Microbiol.* 68, 3094–3101.
- Pol, A., Heijmans, K., Harhangi, H. R., Tedesco, D., Jetten, M. S. M., Op den Camp, H. J. M., et al. (2007). Methanotrophy below pH 1 by a new Verrucomicrobia species. *Nat. Lett.* 450, 918–921. doi: 10.1038/nature06222
- Raghoebarsing, A. A., Pol, A., van de Pas-Schoonen, K. T., Smolders, A. J. P., Ettwig, K. F., and Rijpstra, I. C. (2006). A microbial consortium couples anaerobic methane oxidation to denitrification. *Nat. Lett.* 440, 918–921. doi: 10.1038/nature04617
- Rappé, M. S., and Giovannoni, S. J. (2003). The uncultured microbial majority. *Annu. Rev. Microbiol.* 57, 369–394.
- Roland, F. A. E., Morana, C., Darchambeau, F., Cowe, S. A., Thamdrup, B., Descy, J., et al. (2018). Anaerobic methane oxidation and aerobic methane production in an east African great lake (Lake Kivu). *J. Great Lakes Res.* 44, 1183–1193. doi: 10.1016/j.jglr.2018.04.003
- Roldán, D. M., Carrizo, D., Sánchez-García, L., and Menes, R. J. (2022). Diversity and effect of increasing temperature on the activity of methanotrophs in sediments of fildes Peninsula Freshwater Lakes, King George Island, Antarctica. *Front. Microbiol.* 13:822552. doi: 10.3389/fmicb.2022.822552
- Rybak, M., Cerbin, S., Pelechata, A., Bartosiewicz, M., and Bodelier, P. (2018). “The influence of eutrophication on methane production and its potential as a carbon source for zooplankton,” in *Proceedings of the 17th World Lake Conference*, (Ibaraki).
- Saarela, T., Rissanen, A. J., Ojala, A., Pumpanen, J., Aalto, S., Tirola, M., et al. (2020). CH₄ oxidation in a boreal lake during the development of hypolimnetic hypoxia. *Aquatic Sci.* 82:19. doi: 10.1007/s00027-019-0690-8
- Schloss, P. D., and Westcott, S. L. (2011). Assessing and improving methods used in operational taxonomic-unit based approaches for 16S rRNA gene sequence analysis. *Appl. Environ. Microbiol.* 77, 3219–3226. doi: 10.1128/AEM.02810-10
- Schloss, P. D., Westcott, S. L., Ryabin, T., Hall, J. R., Hartmann, M., and Hollister, E. B. (2009). Introducing mothur: open-source, platform-independent, community-supported software for describing and comparing microbial communities. *Appl. Environ. Microbiol.* 75, 7537–7541. doi: 10.1128/AEM.01541-09
- Schmitz, R. A., Peeters, S. H., Versantvoort, W., Picone, N., Pol, A., Jetten, M. S. M., et al. (2021). Verrucomicrobial methanotrophs: ecophysiology of metabolically versatile acidophiles. *FEMS Microbiol. Rev.* 45:fuab007. doi: 10.1093/femsre/ufab007
- Schubert, C. J., Diem, T., and Eugster, W. (2012). Methane emissions from a small wind shielded lake determined by eddy covariance, flux chambers, anchored funnels, and boundary model calculations: a comparison. *Environ. Sci. Technol.* 46, 4515–4522. doi: 10.1021/es203465x
- Schubert, C. J., Lucas, F. S., Durisch-Kaiser, E., Stierli, R., Diem, T., Scheidegger, O., et al. (2010). Oxidation and emission of methane in a monomictic lake (Rotsee, Switzerland). *Aquatic Sci.* 72, 455–456. doi: 10.1007/s00027-010-0148-5
- Shen, L. D., He, Z. F., Zhu, Q., Chen, D. Q., Lou, L. P., Xu, X. Y., et al. (2012). Microbiology, ecology, and application of the nitrite-dependent anaerobic methane oxidation process. *Front. Microbiol.* 3:269. doi: 10.3389/fmicb.2012.00269
- Shiau, Y. J., Lin, C. W., Cai, Y., Jia, Z., Lin, Y. T., and Chiu, C. Y. (2020). Niche differentiation of active methane-oxidizing bacteria in estuarine mangrove forest soils in Taiwan. *Microorganisms* 8:1248. doi: 10.3390/microorganisms8081248
- Singh, J. S. (2013). Anticipated effect of climate change on methanotrophic methane oxidation. *Climate Change Environ. Sustainability* 1, 20–24.
- Smith, G. J., and Wrighton, K. C. (2019). Metagenomic approaches unearth methanotroph phylogenetic and metabolic diversity. *Curr. Issues Mol. Biol.* 33, 57–84. doi: 10.21775/cimb.033.057
- Sundh, I., Bastviken, D., and Tranvik, L. J. (2005). Abundance, activity, and community structure of pelagic methane-oxidizing bacteria in temperate lakes. *Appl. Environ. Microbiol.* 71, 6746–6752. doi: 10.1128/AEM.71.11.6746-6752.2005
- Theisen, A. R., and Murrell, J. C. (2005). Facultative methanotrophs revisited. *J. Bacteriol.* 187, 4303–4305.
- Tischer, K., Zeder, M., Klug, R., Pernthaler, J., Schattnerhofer, M., Harms, H., et al. (2012). Fluorescence in situ hybridization (CARD-FISH) of microorganisms in hydrocarbon contaminated aquifer sediment samples. *Syst. Appl. Microbiol.* 35, 526–532. doi: 10.1016/j.syapm.2012.01.004
- Tiwari, S., Singh, J. S., and Singh, D. P. (2015). Methanotrophs and CH₄ sink: effect of human activity and ecological perturbations. *Climate Change Environ. Sustainability* 3, 35–50.
- Trotsenko, Y., and Murrell, J. C. (2008). “Metabolic aspects of aerobic obligate methanotrophy,” in *Advances in Applied Microbiology*, eds A. Laskin, S. Sariaslani, and G. Gadd (Amsterdam: Elsevier).
- Tsai, J., Kratz, T. K., Hanson, P. C., Wu, J., Chang, W. B., Arzberger, P. W., et al. (2008). Seasonal dynamics, typhoons and the regulation of lake metabolism in a subtropical humic lake. *Freshw. Biol.* 53, 1929–1941. doi: 10.1111/j.1365-2427.2008.02017.x
- Tu, T., Wu, L., Lin, Y., Imachi, H., Lin, L., and Wang, P. (2017). Microbial community composition and functional capacity in a terrestrial ferruginous, sulfate-depleted mud volcano. *Front. Microbiol.* 8:2137. doi: 10.3389/fmicb.2017.02137
- Tuomivirta, T. T., Yrjala, K., and Fritze, H. (2009). Quantitative PCR of pmoA using a novel reverse primer correlates with potential methane oxidation in Finnish fen. *Res. Microbiol.* 160, 751–756. doi: 10.1016/j.resmic.2009.09.008
- Urmann, K., Lazzaro, A., Gandolfi, I., Schroth, M. H., and Zeyer, J. (2009). Response of methanotrophic activity and community structure to temperature changes in a diffusive CH₄/O₂ counter gradient in an unsaturated porous medium. *FEMS Microbiol. Ecol.* 69, 202–212. doi: 10.1111/j.1574-6941.2009.00708.x
- Van Aken, B., Peres, C. M., Doty, S. L., Yoon, J. M., and Schnoor, J. L. (2004). *Methylobacterium populi* sp. nov., a novel aerobic, pink-pigmented, facultatively methylotrophic, methane-utilizing bacterium isolated from poplar trees (*Populus x deltoides nigra* DN34). *Int. J. Syst. Evol. Microbiol.* 54, 1191–1196. doi: 10.1099/ijs.0.02796-0
- Van Grinsven, S., Oswald, K., Wehrli, B., Jegge, C., Zopfi, J., Lehmann, M. F., et al. (2021). Methane oxidation in the waters of a humics-rich boreal lake stimulated by photosynthesis, nitrite, Fe(III) and humics. *Biogeosciences* 18, 3087–3101. doi: 10.5194/bg-2021-3
- Van Teeseling, M. C. F., Pol, A., Harhangi, H. R., van der Zwart, S., Jetten, M. S. M., Op den Camp, H. J. M., et al. (2014). Expanding the Verrucomicrobial methanotrophic world: description of three novel species of *Methylacidimicrobium* gen. nov. *Appl. Environ. Microbiol.* 80, 6782–6791. doi: 10.1128/AEM.01838-14
- Vorobev, A. V., Baani, M., Doronina, N. V., Brady, A. L., Liesack, W., Dunfield, P. F., et al. (2011). *Methyloferula stellata* gen. nov., sp. nov., an acidophilic, obligately methanotrophic bacterium that possesses only a soluble methane monooxygenase. *Int. J. Syst. Evol. Microbiol.* 61, 2456–2463. doi: 10.1099/ijs.0.028118-0
- Vuillemin, A., Horn, F., Alawi, M., Henny, C., Wagner, D., Crowe, S. A., et al. (2017). Preservation and significance of extracellular DNA in ferruginous sediments from Lake Towuti, Indonesia. *Front. Microbiol.* 8:1440. doi: 10.3389/fmicb.2017.01440
- Welte, C. U., Rasigraf, O., Vaksmaa, A., Versantvoort, W., Arshad, A., Op den Camp, H. J., et al. (2016). Nitrate- and nitrite-dependent anaerobic oxidation of methane. *Environ. Microbiol. Rep.* 8, 941–955. doi: 10.1111/1758-2229.12487
- West, W. E., Creamer, K. P., and Jones, S. E. (2016). Productivity and depth regulate lake contributions to atmospheric methane. *Limnol. Oceanogr.* 61, S51–S61. doi: 10.1007/s11356-020-08296-0
- Wilson, K. (2001). Preparation of genomic dna from bacteria. *Curr. Protoc. Mol. Biol.* 56, 2.4.1–2.4.5. doi: 10.1002/0471142727.mb020456
- Wu, X., Xi, W., Ye, W., and Yang, H. (2007). Bacterial community composition of a shallow hypertrophic freshwater lake in China, revealed by 16S rRNA gene sequences. *FEMS Microbiol. Ecol.* 61, 85–96. doi: 10.1111/j.1574-6941.2007.00326.x
- Yang, P., Lai, D. Y., Yang, H., Lin, Y., Tong, C., Hong, Y., et al. (2022). Large increase in CH₄ emission following marsh conversion of coastal marsh to aquaculture ponds caused by changing gas transport pathways. *Water Res.* 222:118882. doi: 10.1016/j.watres.2022.118882
- Yang, S., Liebner, S., Alawi, M., Ebenhoh, O., and Wagner, D. (2014). Taxonomic database and cut-off value for processing mcrA gene 454 pyrosequencing data by MOTHUR. *J. Microbiol. Methods* 103, 3–5. doi: 10.1016/j.mimet.2014.05.006
- Yang, Y., Chen, J., Tong, T., Li, B., He, T., Liu, Y., et al. (2019). Eutrophication influences methanotrophic activity, abundance and community structure in freshwater lakes. *Sci. Total Environ.* 662, 863–872. doi: 10.1016/j.scitotenv.2019.01.307
- Yoshimizu, C., Yoshiyama, K., Tayasu, I., Koitabashi, T., and Nagata, T. (2010). Vulnerability of a large monomictic lake (Lake Biwa) to warm winter event. *Limnology* 11, 233–239. doi: 10.1007/s10201-009-0307-3
- Yvon-Durocher, G., Allen, A. P., Bastviken, D., Conrad, R., Gudas, C., St-Pierre, A., et al. (2014). Methane fluxes show consistent temperature dependent across microbial to ecosystem scales. *Nature* 507, 488–495. doi: 10.1038/nature13164

- Zhu, B., Karwautz, C., Andrei, S., Klingl, A., Pernthaler, J., and Lueders, T. (2022). A novel *Methylomirabilota* methanotroph potentially couples methane oxidation to iodate reduction. *mLife* 1, 323–328.
- Zhu, G., Zhou, L., Wang, Y., Wang, S., Guo, J., Long, X., et al. (2015). Biogeographical distribution of denitrifying anaerobic methane oxidizing bacteria in Chinese wetland ecosystems. *Environ. Microbiol.* 7, 128–138. doi: 10.1111/1758-2229.12214
- Zigah, P. K., Oswald, K., Brand, A., Dinkel, C., Wehrli, B., and Schubert, C. J. (2015). Methane oxidation pathways and associated methanotrophic communities in the water column of a tropical lake. *Limnol. Oceanogr.* 60, 553–572. doi: 10.1002/lno.10035