



## OPEN ACCESS

## EDITED BY

Giovanni Di Bonaventura,  
University of Studies G. d'Annunzio Chieti and  
Pescara, Italy

## REVIEWED BY

Chun-Hsing Liao,  
National Yang Ming Chiao Tung University,  
Taiwan  
Berna Akova,  
Bursa Uludağ University, Türkiye

## \*CORRESPONDENCE

Chien-Ming Chao  
✉ Ccm870958@yahoo.com.tw

RECEIVED 15 March 2023

ACCEPTED 18 May 2023

PUBLISHED 20 June 2023

## CITATION

Su B-A, Chen C-C, Chen H-J, Lai H-Y, Tsai C-H,  
Lai C-C, Tang H-J and Chao C-M (2023) *In vitro*  
activities of antimicrobial combinations against  
planktonic and biofilm forms of  
*Stenotrophomonas maltophilia*.  
*Front. Microbiol.* 14:1186669.  
doi: 10.3389/fmicb.2023.1186669

## COPYRIGHT

© 2023 Su, Chen, Chen, Lai, Tsai, Lai, Tang and  
Chao. This is an open-access article distributed  
under the terms of the [Creative Commons  
Attribution License \(CC BY\)](https://creativecommons.org/licenses/by/4.0/). The use,  
distribution or reproduction in other forums is  
permitted, provided the original author(s) and  
the copyright owner(s) are credited and that  
the original publication in this journal is cited,  
in accordance with accepted academic  
practice. No use, distribution or reproduction is  
permitted which does not comply with these  
terms.

# *In vitro* activities of antimicrobial combinations against planktonic and biofilm forms of *Stenotrophomonas maltophilia*

Bo-An Su<sup>1,2</sup>, Chi-Chung Chen<sup>3,4,5</sup>, Hung-Jui Chen<sup>1</sup>, Hsin-Yu Lai<sup>1</sup>, Chia-Hung Tsai<sup>1</sup>, Chih-Cheng Lai<sup>6,7</sup>, Hung-Jen Tang<sup>3,8</sup> and Chien-Ming Chao<sup>9\*</sup>

<sup>1</sup>Division of Infectious Diseases, Department of Internal Medicine, Chi Mei Medical Center, Tainan, Taiwan, <sup>2</sup>Department of Pharmacy, Chia Nan University of Pharmacy and Science, Tainan, Taiwan, <sup>3</sup>Department of Medical Research, Chi Mei Medical Center, Tainan, Taiwan, <sup>4</sup>Department of Health and Nutrition, Chia Nan University of Pharmacy and Science, Tainan, Taiwan, <sup>5</sup>Department of Bioscience Technology, Chang Jung Christian University, Tainan, Taiwan, <sup>6</sup>Division of Hospital Medicine, Department of Internal Medicine, Chi Mei Medical Center, Tainan, Taiwan, <sup>7</sup>School of Medicine, College of Medicine, National Sun Yat-sen University, Kaohsiung, Taiwan, <sup>8</sup>Department of Medicine, Chi Mei Medical Center, Tainan, Taiwan, <sup>9</sup>Department of Intensive Care Medicine, Chi Mei Medical Center, Liouying, Taiwan

**Objectives:** To investigate the *in vitro* activity of antibiotic combinations against *Stenotrophomonas maltophilia* isolates and their associated biofilms.

**Methods:** Thirty-two *S. maltophilia* clinical isolates with at least twenty-five different pulsotypes were tested. The antibacterial activity of various antibiotic combinations against seven randomly selected planktonic and biofilm-embedded *S. maltophilia* strains with strong biofilm formation was assessed using broth methods. Extraction of bacterial genomic DNA and PCR detection of antibiotic resistance and biofilm-related genes were also performed.

**Results:** The susceptibility rates of levofloxacin (LVX), fosfomycin (FOS), tigecycline (TGC) and sulfamethoxazole-trimethoprim (SXT) against 32 *S. maltophilia* isolates were 56.3, 71.9, 71.9 and 90.6%, respectively. Twenty-eight isolates were detected with strong biofilm formation. Antibiotic combinations, including aztreonam-clavulanic (ATM-CLA) with LVX, ceftazidime-avibactam (CZA) with LVX and SXT with TGC, exhibited potent inhibitory activity against these isolates with strong biofilm formation. The antibiotic resistance phenotype might not be fully caused by the common antibiotic-resistance or biofilm-formation gene.

**Conclusion:** *S. maltophilia* remained resistant to most antibiotics, including LVX and  $\beta$ -lactam/ $\beta$ -lactamases; however, TGC, FOS and SXT still exhibited potent activity. Although all tested *S. maltophilia* isolates exhibited moderate-to-strong biofilm formation, combination therapies, especially ATM-CLA with LVX, CZA with LVX and SXT with TGC, exhibited a higher inhibitory activity for these isolates.

## KEYWORDS

*Stenotrophomonas maltophilia*, levofloxacin, fosfomycin, ceftazidime-avibactam, tigecycline

## Introduction

*Stenotrophomonas maltophilia* is a glucose-nonfermenting gram-negative obligate aerobic bacillus found in aquatic environments (Brooke, 2012, 2021). In hospitals, *S. maltophilia* has been identified in tap water systems, sink drains, showerheads, and even central venous catheters, endoscopes and dialysate (Nyc and Matejková, 2010). Previous studies also demonstrated that contaminated hospital water could be the source of nosocomial *S. maltophilia* outbreaks (Cervia et al., 2008; Guyot et al., 2013). Clinically, *S. maltophilia* causes various infections, including pneumonia, bloodstream infection, endocarditis, urinary tract infection and soft tissue infection. Among them, pneumonia and bloodstream are the most common nosocomial infections (Singhal et al., 2017; Flores-Treviño et al., 2019; Trifonova and Strateva, 2019; Majumdar et al., 2022; Mojica et al., 2022; Tamma et al., 2022; Umar et al., 2022). Although the virulence of *S. maltophilia* might be low, its associated infections can cause high morbidity and mortality (Falagas et al., 2009; Brooke, 2012; De Mauri et al., 2014; Mori et al., 2014; Trifonova and Strateva, 2019). One of the reasons for the high mortality rate is the limited treatment options due to multiple antibiotic resistance (Brooke, 2012; Majumdar et al., 2022).

*S. maltophilia* produces  $\beta$ -lactamases L1 and L2, which generate  $\beta$ -lactams, cephalosporins, and carbapenems resistant (Avison et al., 2001; Hu et al., 2008). Resistance to aminoglycosides is related to the presence of an aminoglycoside acetyl-transferase (Li et al., 2003). Other resistance mechanisms include efflux pumps, low outer membrane permeability and antibiotic-inactivating enzymes (Singhal et al., 2017). All these mechanisms contributed to the antibiotic resistance of *S. maltophilia*. The current recommended regimens for the treatment of *S. maltophilia* infections are based on previous evidence. Although trimethoprim/sulfamethoxazole and levofloxacin were recommended for treating *S. maltophilia* infection (Singhal et al., 2017; Gibb and Wong, 2021), the resistance to these agents had increased gradually (Wu et al., 2012). The presence of biofilm produced by *S. maltophilia* also causes the treatment to become ineffective (Flores-Treviño et al., 2019; Bostanghadiri et al., 2021). A multicenter prospective study showed that 91.7% of strains could form biofilms, especially bloodborne strains (Pompilio et al., 2020). In this study, more resistance to trimethoprim/sulfamethoxazole and levofloxacin was observed for the biofilm form than the planktonic form (Pompilio et al., 2020). Therefore, there is an urgent need to develop an effective antibiotic regimen to treat *S. maltophilia* infection with resistance and biofilm formation.

The aim of this study was to investigate the *in vitro* activity of antibiotics against *S. maltophilia* isolates and to find a suitable antibiotic combination with synergistic effects to combat antibiotic-resistant *S. maltophilia* and its associated biofilm.

## Materials and methods

Thirty-two *S. maltophilia* clinical isolates were collected from the Chi-Mei Medical Center. Species confirmations were performed using matrix-assisted laser desorption ionization time of flight (MALDI-TOF) mass spectrometry (microflex LT, Bruker Daltonics, Bremen, Germany). The isolates were stored at  $-80^{\circ}\text{C}$  in Protect Bacterial Preservers (Technical Service Consultants Limited, Heywood, United Kingdom) before use (Chang et al., 2018).

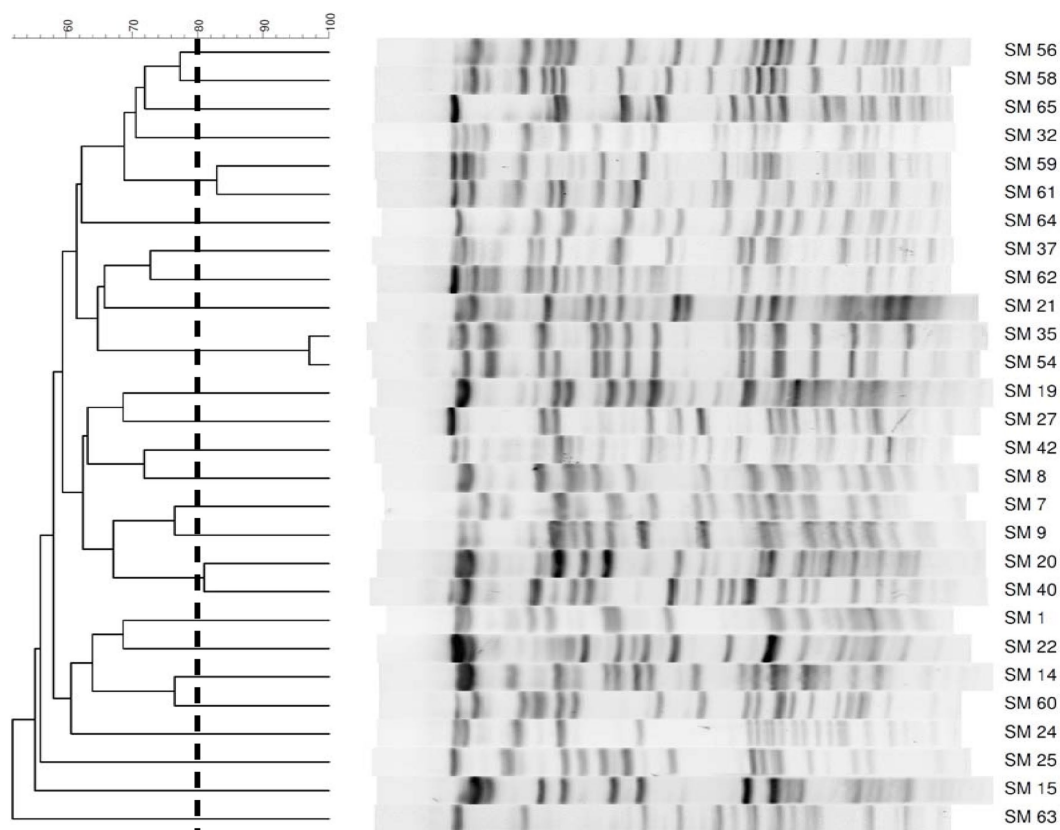
The *S. maltophilia* isolates were characterized by PFGE using a CHEF DR II apparatus (Bio-Rad Laboratories, Hercules, CA, United States) with the restriction endonuclease XbaI as described previously (Jumaa et al., 2006). Briefly, bacterial chromosomal DNAs were digested using XbaI (New England Biolabs, Beverly, MA, United States). Electrophoresis was carried out for 22 h at  $14^{\circ}\text{C}$ , with pulse times ranging from 5 to 35 s at 6 V/cm, using a Bio-Rad CHEF MAPPER apparatus (Bio-Rad Laboratories, Richmond, CA, United States). The PFGE patterns were visually examined and interpreted according to the criteria of Tenover et al. (1995). The Dice similarity coefficients were calculated, and PFGE profiles with  $<80\%$  similarity were considered different pulsotypes. In addition to four strains that were untypable, twenty-five different pulsotypes among 28 isolates were selected for further studies (Figure 1).

## Antibiotics and MIC determination

The antibiotics tested were amoxicillin (AMX), amoxicillin-clavulanate (AMC), aztreonam (ATM), aztreonam-clavulanic (ATM-CLA), chloramphenicol (CHL), ceftazidime-avibactam (CZA), doripenem (DOR), ertapenem (ETP), fosfomicin (FOS), levofloxacin (LVX), piperacillin (PIP), rifampicin (RIF), sulfamethoxazole-trimethoprim (SXT), tigecycline (TGC), ticarcillin (TIC), ticarcillin-clavulanate (T/C) and piperacillin-tazobactam (TZP). Except avibactam (MedKoo Biosciences, Inc., Morrisville, NC, United States), all drugs were purchased from Sigma (Sigma, St Louis, MO United States). Antibiotic MICs were determined by the agar dilution method and interpretation criteria and were based on the recommendations of the Clinical and Laboratory Standards Institutes (CLSI, 2022) or US Food and Drug Administration (FDA). Specifically, the MIC criteria for CHL, LVX, MIN, SXT, and T/C were based on the guidelines of CLSI for *S. maltophilia*. For AMX, AMC, ATM-CLA, CZA, DOR, ETP, and FOS, the criteria were based on Enterobacteriaceae but for ATM, PIP, TIC, and TZP, the criteria were based on other non-Enterobacterale. For RIF, the criteria were based on *Staphylococcus*. Finally, The criteria for TGC were based on the recommendation of FDA. Briefly, Mueller-Hinton agar (Oxoid, Basingstoke, United Kingdom) was employed to determine the MICs for *S. maltophilia*. Inocula were prepared by suspending overnight cultures in saline to a turbidity equivalent to that of a 0.5 McFarland standard. Inoculated plates were then incubated in ambient air at  $37^{\circ}\text{C}$  for 24 h. Quality control testing was performed using *Escherichia coli* ATCC 25922, *Klebsiella pneumoniae* ATCC 700603 and *Pseudomonas aeruginosa* ATCC 27853 (Shields et al., 2018).

## Minimum concentration for biofilm eradication

The antibacterial activity of each drug in the biofilm was measured using the minimum biofilm eradication concentration (MBEC) assay (Ceri et al., 1999). MBEC indicates the lowest concentrations of the antibiotics added to clear wells in the 96-well ELISA plate. The assay involved biofilm formation on the plastic pegs of the lid of the MBEC device. These biofilms were exposed to antibiotics for 24 h at  $37^{\circ}\text{C}$ , placed in a second 96-well plate containing fresh Mueller-Hinton broth and incubated overnight. The MBEC was the lowest dilution



**FIGURE 1**  
PFGE patterns of 28 *Stenotrophomonas maltophilia* isolates. The number on the scale is the percentage of genetic similarity. PFGE profiles with <80% similarity were considered different. Four strains were untypable.

that prevented bacterial regrowth after antibiotic treatment. The MBEC was the lowest dilution that prevented bacterial regrowth after antibiotic treatment. All tests were performed in triplicate. All MBECs of the test drugs were over 1,024  $\mu\text{g}/\text{mL}$  (data not shown).

## Biofilm formation

The biofilm formation ability test was performed according to a previous study with modifications (Tang et al., 2012). Briefly, all bacteria were cultured for 1 day at 37°C in 5 mL of tryptic soy broth (Difco Laboratories) with 1% glucose (TSBGlc). The cultures were diluted 1:1000 in TSBGlc, and 200  $\mu\text{L}$  of the solution was added to a 96-well plate. After 24 h of growth at 37°C, the plates were washed three times with PBS to remove unattached bacteria and stained with 100  $\mu\text{L}$  1% crystal violet (Sigma, St Louis, MO United States). The plate was incubated for 15 min at room temperature; the staining solution was removed, and the plate was washed three times with PBS. After the washing solution was removed, 100  $\mu\text{L}$  of DMSO was added to each well to dissolve the biofilm-bound crystal violet and incubated for 5 min. The  $\text{OD}_{570}$  was obtained as an index of adherent bacteria and biofilm formation. To compensate for background absorbance, the OD of a sterile medium with fixative and dye was recorded and subtracted from the results. All strains were classified as follows:  $\text{OD} \leq \text{ODc}$  nonbiofilm formation;  $\text{ODc} < \text{OD} \leq 2 \times \text{ODc}$  weak biofilm

formation;  $2 \times \text{ODc} < \text{OD} \leq 4 \times \text{ODc}$  moderate biofilm formation;  $4 \times \text{ODc} < \text{OD}$  strong biofilm formation (Stepanovic et al., 2000). The experiments were performed in triplicate, and the results are presented as the mean  $\pm$  SD.

## Killing effects of antimicrobial agents on biofilms after 5 days of treatment

Seven strong biofilm-formation isolates were randomly selected and prepared in 24-well culture plates. These antibiotics (ATM-CLA, CZA, FOS, LVX, SXT, TGC) were used to treat biofilms alone or in combination. Antibiotic concentrations were adjusted to the susceptible breakpoint concentration (SBC) for all tests. The concentrations of antibiotics were adjusted to the SBC for all tests. The SBC was defined according to the CLSI guidelines as 8/4, 2, and 2/38  $\mu\text{g}/\text{mL}$  for CZA, LVX, and SXT, respectively, for *S. maltophilia*, and 4/2 and 64  $\mu\text{g}/\text{mL}$  for ATM-CLA and FOS, respectively, for Enterobacterales. The SBC for TGC for Enterobacterales was determined to be 2  $\mu\text{g}/\text{mL}$  according to recommendation of FDA. The antibiotic-containing medium was gently aspirated after 24 h, and the biofilm was washed with PBS three times. Fresh antibiotic-containing medium was added to the wells continuously for 5 days. To quantify the degree of inhibition of biofilm-embedded bacteria by the tested antibiotics, the biofilms were collected on Day 5. The wells containing biofilms were sonicated using a water-table sonicator for 5 min. The

disrupted biofilm was serially diluted, plated and cultured overnight at 37°C, and viable cells were counted. The limitation of detection in this study was 2 log<sub>10</sub> CFU/mL. All tests were performed in triplicate (Stepanovic et al., 2000).

## Time-killing effect of biofilms and planktonic bacteria

The biofilms of each isolate were prepared in 24-well culture plates. Antibiotic concentrations were adjusted to the SBC for all tests. The medium in the wells was removed by aspiration, and the biofilm in each plate was treated with sulfamethoxazole-trimethoprim (38/2 µg/mL) or tigecycline (2 µg/mL) at the SBC or sulfamethoxazole-trimethoprim in combination with tigecycline. The other two combinations also received the same experimental treatment. The antibiotic-containing medium was gently aspirated after 24 h, and the biofilm was washed with PBS three times. Fresh antibiotic-containing medium was added to the wells continuously for 5 days. To quantify the degree of inhibition of biofilm-released (planktonic) and biofilm-embedded bacteria by the tested antibiotics, the cell suspension and biofilm were collected on Days 0 (before antibiotic treatment), 1, 3 and 5. The planktonic bacteria were detected using the broth method described above. The wells containing biofilms were sonicated for 5 min. The disrupted biofilm was serially diluted, plated and cultured overnight at 37°C, and viable cells were counted. All tests were performed in triplicate (Shields et al., 2018).

## Antibiotic combination activity assessed by the broth method

The *in vitro* inhibitory effect of combination regimens following the broth killing method was defined in accordance with the CLSI. In brief, the 7 bacterial (as described above) suspensions were diluted to concentrations of 5 × 10<sup>5</sup> in fresh Mueller–Hinton broth. Three different antibiotic combinations (SXT with TGC, ATM-CLA with LVX, CZA with LVX) were also used in this experiment. Drug concentrations of ATM-CLA, LVX, SXT and TGC were adjusted to 1x MIC, 1/2 x MIC and 1/4x MIC and the SBC for CZA. Bacterial counts were measured at 24 and 48 h; colonies were serially diluted 10-fold in 100 µL aliquots, plated on nutrient agar (Difco Laboratories, Sparks, MD, United States) at 37°C and enumerated (Tang et al., 2021).

## Bacterial genomic DNA extraction and PCR detection of antibiotic resistance genes and biofilm-related genes

The bacterial genomic DNA was extracted using the Bacteria Genomic DNA Kit (Geneaid, Taiwan). The antibiotic resistance determinants and biofilm-related genes were detected by PCR using specific primers. PCR assays were performed using Phusion™ Plus PCR Master Mix (Thermo Scientific), and PCR amplicons were analyzed by 1.5% agarose gel electrophoresis, visualized by health view nucleic acid stain and photographed under UV light (Tang et al., 2021).

## Results

### MIC results

Table 1 shows the MIC results of the tested antibiotics against 32 *S. maltophilia* isolates. No isolates were susceptible to AMX, DOR, ETP, PIP, TIC, and TZP, and less than 20% were susceptible to AMC, ATM, CHL, CZA, RIF, and T/C. A total of 56.3% of isolates remained susceptible to LVX. Additionally, FOS and TGC showed potent activity against 71.88 and 71.88% of isolates, respectively. Finally, SXT was the most active agent, and the overall susceptibility rate was 90.60%.

### Ability of the isolates to form biofilms

All tested isolates showed moderate-to-strong biofilm formation (Figure 2). Among the 32 isolates, four achieved moderate biofilm formation (SM19, SM33, SM42, and SM63), and the others achieved strong biofilm formation.

Furthermore, seven randomly selected isolates (SM8, SM9, SM20, SM21, SM56, SM60 and SM64) with strong biofilm formation were tested against various antibiotics (ATM-CLA, SXT, LVX, TGC, FOS, and CZA) alone or in combination treatment (Figure 3). Compared to monotherapy, combination therapy (ATM-CLA plus SXT, ATM-CLA plus TGC, CZA plus SXT, FOS plus LVX) exhibited

TABLE 1 MIC results of tested antibiotics for 32 *Stenotrophomonas maltophilia* isolates.

	32 isolates			
	MIC 50	MIC 90	MIC range	Susceptible %
AMX	>128	>128	64 ~ >128	0.00%
AMC	64/32	64/32	4/2 ~ 128/64	6.25%
ATM	>128	>128	4 ~ >128	3.13%
ATM-CLA	8/4	32/16	2/1 ~ 128/64	31.25%
CHL	16	128	4 ~ 128	9.40%
CZA	32/4	>128/4	2/4 ~ >128/4	18.75%
DOR	>16	>16	16 ~ >16	0.00%
ETP	>16	>16	8 ~ >16	0.00%
FOS	64	128	32 ~ >1,024	71.88%
LVX	2	8	0.5 ~ 32	56.30%
PIP	>128	>128	64 ~ >128	0.00%
RIF	8	16	1 ~ 32	6.25%
SXT	0.25/4.75	0.25/4.75	0.25/4.75 ~ > 16/304	90.60%
TGC	2	8	1 ~ 16	71.88%
TIC	>128	>128	64 ~ >128	0.00%
T/C	128/2	>128/2	2/2 ~ >128/2	12.50%
TZP	>128/4	>128/4	32/4 ~ >128/4	0.00%

AMX, amoxicillin; AMC, amoxicillin-clavulanate; ATM, aztreonam; ATM-CLA, aztreonam-clavulanate; CHL, chloramphenicol; CZA, ceftazidime-avibactam; DOR, doripenem; ETP, ertapenem; FOS, fosfomicin; LVX, levofloxacin; PIP, piperacillin; RIF, rifampin; SXT, trimethoprim-sulfamethoxazole; TGC, tigecycline; TIC, ticarcillin; T/C, ticarcillin-clavulanate; TZP, piperacillin-tazobactam.



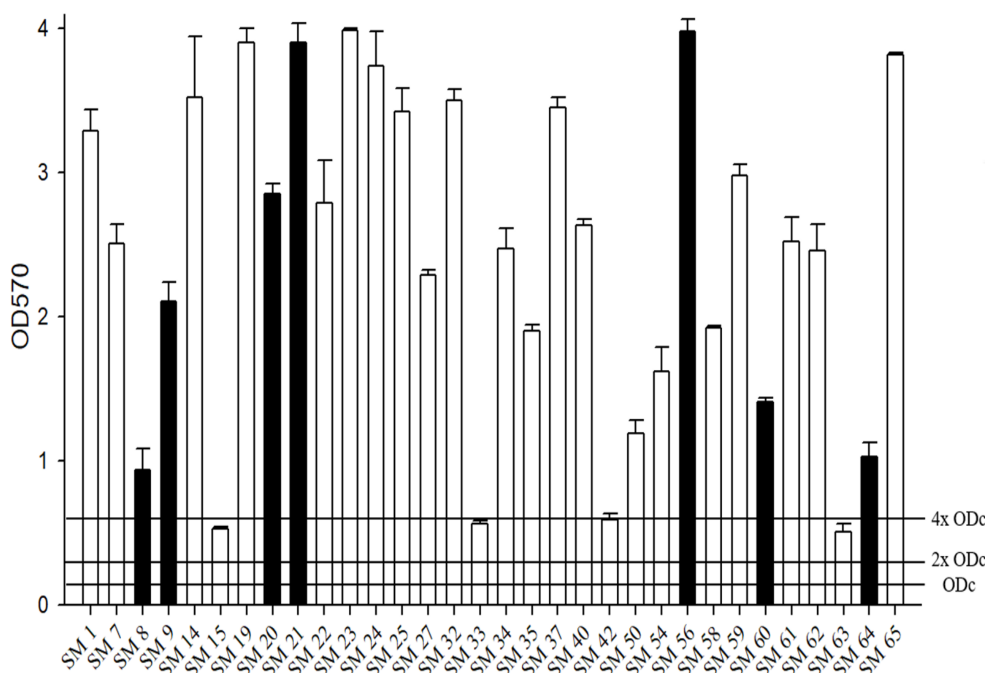


FIGURE 2

The biofilm formation ability of *S. maltophilia*. The black bars are seven randomly selected biofilm-forming strains for this study. Biofilm formation results of the *S. maltophilia* isolates using the following criteria:  $OD \leq OD_c$  nonbiofilm formation;  $OD_c < OD \leq 2 \times OD_c$  weak biofilm formation;  $2 \times OD_c < OD \leq 4 \times OD_c$  moderate biofilm formation;  $4 \times OD_c < OD$  strong biofilm formation.

significantly higher activity (all  $p < 0.05$ ). Moreover, the combination with three following regimens -ATM-CLA plus LVX, CZA plus LVX and SXT plus TGC – exhibited more potent activity than that of monotherapy against strong-biofilm formation isolates (all  $p < 0.01$ ).

Using time-killing methods, these three regimens were further tested for their activity on the planktonic and biofilm-embedded *S. maltophilia* with strong biofilm formation (Figure 4). After 72–120 h, ATM-CLA plus LVX exhibited better activity against both the planktonic and biofilm-embedded isolates than that of ATM-CLA or LVX (Figure 4A). Similarly, CZA plus LVX displayed more inhibitory activity than that of CZA or LVX alone after 72 and 120 h (Figures 4A–D). However, the combination with SXT plus TGC only showed better inhibitory against biofilm-embedded isolates than that of SXT or TGC alone, but there was no significant difference between this combination and each component in the inhibitory effect against planktonic isolates at 120 h (Figures 4E,F).

Using broth methods, these three regimens were further tested for their activity on biofilm-embedded *S. maltophilia* with strong biofilm formation (Table 2). After coculture with 1/2x MIC LVX plus 1/2x MIC ATM-CLA at 24 h, they exhibited better activity against biofilm-embedded isolates with a significant decrease in colony compared to that of each drug alone. However, the effect did not persist for 48 h. With 1x MIC LVX plus 1x MIC ATM-CLA, the inhibitory effect persisted for 48 h ( $p < 0.001$ ; Table 2A). With the combination of 1/2x MIC LVX plus 1/2x SBC CZA, the inhibitory effect persisted for 48 h, which was statistically significant compared with each drug alone ( $p < 0.01$ ). With the combination of 1x MIC LVX plus 1x SBC CZA, the inhibitory effect at 48 h persisted more significantly ( $p < 0.001$ ) (Table 2B). After coculture with 1/2x MIC TGC plus 1/2x MIC SXT

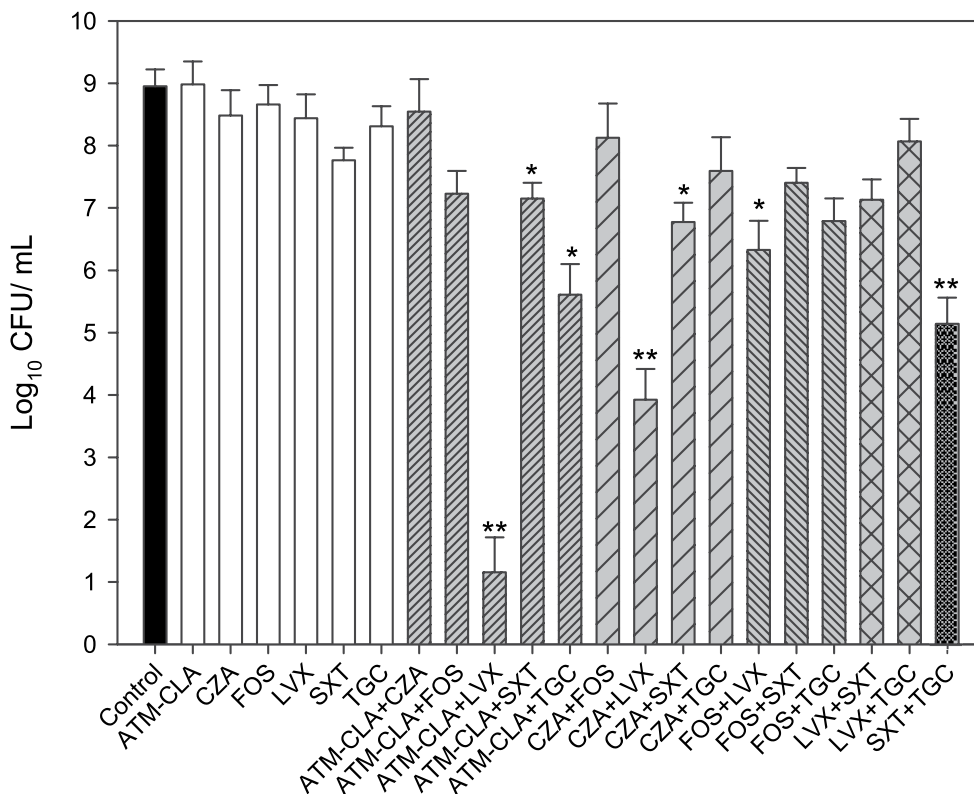
at 24 h, they exhibited better activity against biofilm-embedded isolates than that of each drug alone. However, the effect did not persist for 48 h. With 1x MIC TGC plus 1x MIC SXT, the inhibitory effect persisted for 48 h ( $p < 0.01$ ; Table 2C).

## Antibiotic resistance mechanisms

Table 3 summarizes the association between antibiotic resistance genes and the MIC value of the corresponding antibiotics. L1 and L2  $\beta$ -lactamases were found in 43.8 and 50% of isolates by PCR with L1. L2 full-length primer. Among these isolates, the MICs for carbapenems and  $\beta$ -lactams were especially high. The quinolone-related resistance gene *Smqnr* was found among 78% ( $n = 25$ ) of the isolates, in which the nonsusceptibility rates to LVX and MOX were only 48.0% ( $n = 12$ ) and 40% ( $n = 10$ ), respectively. Among TMP-SMX-related resistance *sul1*, *sul2*, and/or *dfrA* resistance genes, only three isolates exhibited the *sul1* gene, and two of them were resistant to TMP-SMX. Finally, biofilm-related genes *spgM*, *rpfB*, and *rmlA* were detected in 90.6, 53.1 and 81.3% of the studied isolates, respectively (Table 4).

## Discussion

In this study, the antibiotic resistance, biofilm formation and associated mechanisms among *S. maltophilia* were investigated, and several significant findings were obtained. First, *S. maltophilia* remained highly resistant to most antibiotics, including AMX, DOR,



**FIGURE 3** Antimicrobial activities of the six antibiotics used (either alone or in combination) to treat 7 *S. maltophilia* isolates on biofilms. These isolates were exposed to susceptibility breakpoint concentrations of the following drugs for 5 days: 4/2 μg/mL aztreonam-clavulanate (ATM-CLA), 8/4 μg/mL ceftazidime-avibactam (CZA), 64 μg/mL fosfomicin (FOS), 2 μg/ml levofloxacin (LVX), 2/38 μg/mL trimethoprim-sulfamethoxazole (SXT), and 2 μg/ml tigecycline (TGC). Colony counts are shown as the means ± standard deviations. \*  $p < 0.05$ , \*\*  $p < 0.01$ .

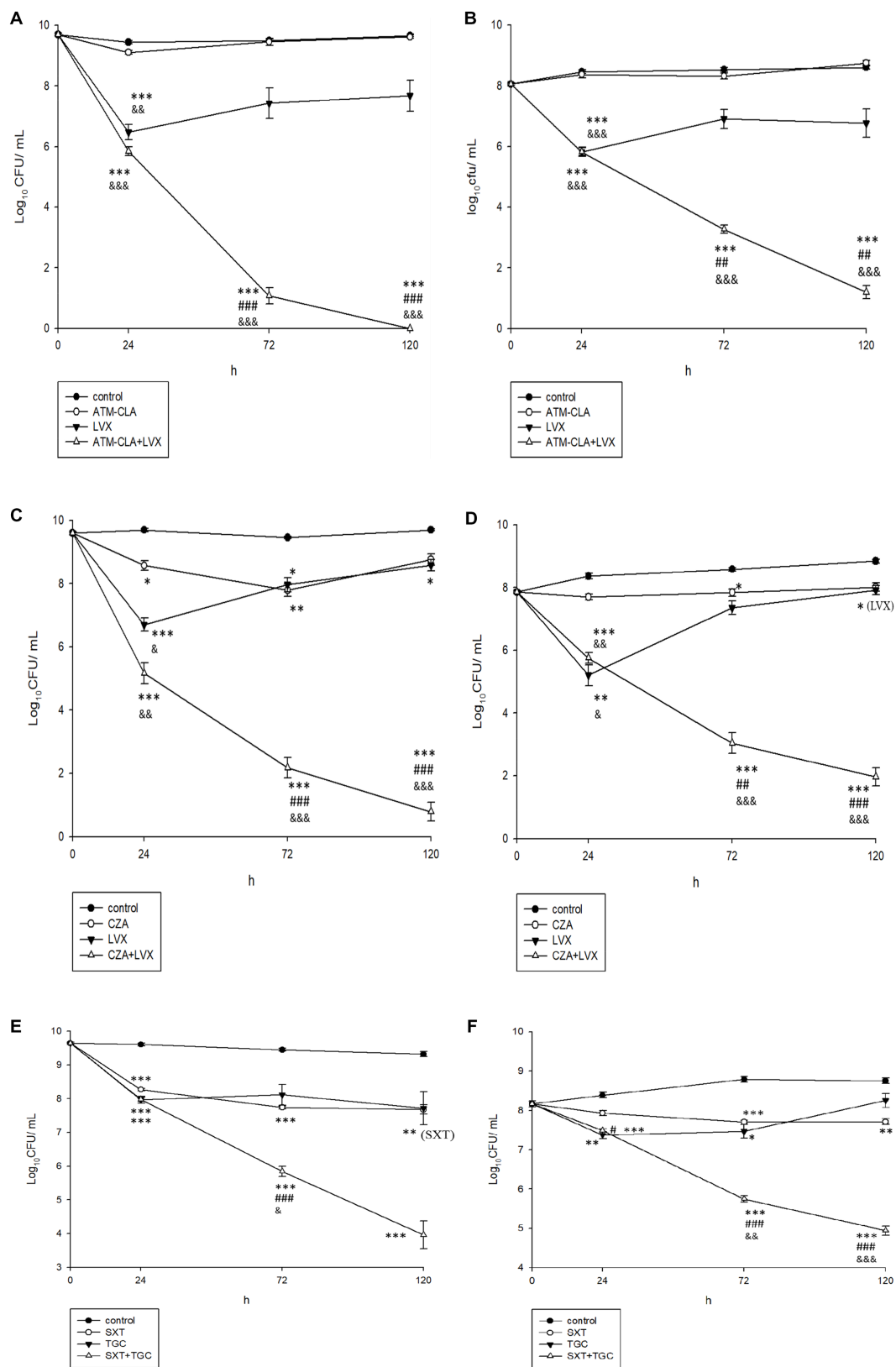
ETP, PIP, TIC, TZP, AMC, ATM, CHL, RIF, T/C and even the β-lactam/β-lactamase combination ceftazidime-avibactam (CZA). Although LVX monotherapy was among the recommended antibiotics for treating mild *S. maltophilia* infection (Tamma et al., 2022), the MIC level of LVX was high, and the associated susceptibility rate was only 56.3%. These findings were in line with previous surveillance in Taiwan (Jean et al., 2022), in which the susceptibility of 42 *S. maltophilia* isolates was only 58.1, 46.5 and 41.9% for LVX, CZA, and another novel β-lactam/β-lactamase combination – ceftolozane/tazobactam (C/T), respectively. Another study in Taiwan also showed that the MIC<sub>90</sub> values of both CZA and C/T were greater than 64 mg/L for 100 *S. maltophilia* isolates (Hsueh et al., 2019). In contrast, the SENTRY Antimicrobial Surveillance Program in the US and Europe reported that 82.5% of 338 *S. maltophilia* isolates remained susceptible to LVX (Shortridge et al., 2022), and another global survey showed that 76.4% of 1,210 *S. maltophilia* isolates were susceptible to LVX (Morrissey et al., 2020). All these findings indicated that the *in vitro* activity of LVX against *S. maltophilia* could differ in different regions/sites and emphasized the importance of continually monitoring and surveilling antibiotic resistance. In Taiwan, the *in vitro* activity of the abovementioned antibiotics, including LVX and β-lactam/β-lactamase combinations, was not potent enough to treat *S. maltophilia* infections.

In addition, we found the potent activity of TGC against *S. maltophilia*. Our findings regarding TGC were consistent with the

global surveillance by Morrissey et al., in which the MIC<sub>50</sub> and MIC<sub>90</sub> of TGC were 0.5 and 4 mg/L, respectively (Morrissey et al., 2020). In Taiwan, Hsueh et al. obtained similar findings in that the MIC<sub>50</sub> and MIC<sub>90</sub> of TGC were as low as ≤0.25 and 2 mg/L, respectively (Hsueh et al., 2019). All these findings indicated the potent *in vitro* activity of TGC; however, further research is needed to assess the clinical efficacy of TGC in the treatment of *S. maltophilia* infection.

In this study, we found that SXT exhibited the most potent *in vitro* activity, with a more than 90% susceptibility rate. This finding was consistent with previous studies (Morrissey et al., 2020; Shortridge et al., 2022), in which the SXT-susceptible rate of *S. maltophilia* isolates ranged from 84.3 to 97.9%. In contrast, the percentage of *S. maltophilia* isolates resistant to SXT significantly increased from 29.7% in 2005–2009 to 47.1% in 2010–2014 (Hu et al., 2018). Overall, SXT remains a good therapeutic option for the treatment of *S. maltophilia* infection in Taiwan and other regions except China.

The *in vitro* activity of the old drug FOS against *S. maltophilia* has rarely been investigated (Lu et al., 2011; Khan et al., 2014). Khan et al. reported that one of two *S. maltophilia* strains causing urinary tract infection was susceptible to FOS (Khan et al., 2014). Lu et al. showed that 59% of 100 *S. maltophilia* isolates were susceptible to FOS, according to the CLSI criteria (Lu et al., 2011). In this study, we found



**FIGURE 4**  
 Effect of antibiotic combination on the seven planktonic (A,C,E) and (B,D,F) biofilm-associated *S. maltophilia* with strong biofilm formation using time-killing methods with the SBC. \*Compared with control. #Compared with the first drug of each figure. &Compared with second drug of each figure. \*, # and &:  $p < 0.05$ . \*\*, ## and &#:  $p < 0.01$ . \*\*\*, ### and &##:  $p < 0.001$ .

TABLE 2 The 24- and 48-h killing effect of the antibiotic combination on the seven *S. maltophilia* strains with strong biofilm formation using broth methods with 1x, 1/2x, and 1/4 SBC in ceftazidime-avibactam (CZA) and 1x, 1/2x, and 1/4x MIC in aztreonam-clavulanate (ATM-CLA), levofloxacin (LVX), tigecycline (TGC), and trimethoprim-sulfamethoxazole (SXT).

(A)									
24h	1x MIC ATM-CLA	1/2x MIC ATM-CLA	1/4x MIC ATM-CLA	Without ATM-CLA	48h	1x MIC ATM-CLA	1/2x MIC ATM-CLA	1/4x MIC ATM-CLA	Without ATM-CLA
1x MIC LVX	0.77 ± 1.32***	3.59 ± 2.13**	5.74 ± 1.22	7.06 ± 1.19	1x MIC LVX	1.65 ± 2.26***	6.07 ± 2.22**	8.24 ± 0.58	8.79 ± 0.56
1/2x MIC LVX	2.54 ± 2.56**	6.16 ± 0.98***	7.22 ± 0.39***	8.44 ± 0.37	1/2x MIC LVX	4.03 ± 3.96*	8.58 ± 0.89	8.96 ± 0.10	8.95 ± 0.13
1/4x MIC LVX	5.24 ± 1.79	7.13 ± 0.78	7.82 ± 0.65***	8.94 ± 0.11	1/4x MIC LVX	6.13 ± 3.28	8.69 ± 0.81	9.00 ± 0.10	8.98 ± 0.11
Without LVX	6.67 ± 0.84	8.55 ± 0.46	8.89 ± 0.12	9.00 ± 0.14	Without LVX	8.18 ± 0.96	8.98 ± 0.08	9.04 ± 0.12	9.08 ± 0.08

(B)									
24h	4 ug/mL CZA	2 ug/mL CZA	1 ug/mL CZA	Without CZA	48h	4 ug/mL CZA	2 ug/mL CZA	1 ug/mL CZA	Without CZA
1x MIC LVX	2.65 ± 2.96*	4.78 ± 1.90**	5.65 ± 1.35*	7.29 ± 1.00	1x MIC LVX	2.51 ± 3.35***	5.26 ± 2.69**	7.05 ± 1.74*	8.62 ± 0.40
1/2x MIC LVX	3.60 ± 3.00*	5.83 ± 1.95*	6.87 ± 0.98*	8.18 ± 0.61	1/2x MIC LVX	5.66 ± 2.92*	7.36 ± 1.12**	7.93 ± 1.60	8.96 ± 0.10
1/4x MIC LVX	5.22 ± 3.06	6.61 ± 1.79	7.49 ± 0.80*	8.84 ± 0.15	1/4x MIC LVX	6.74 ± 3.13	8.85 ± 0.20	8.44 ± 1.20	9.09 ± 0.10
Without LVX	7.18 ± 1.55	8.06 ± 0.65	8.44 ± 0.57	9.02 ± 0.10	Without LVX	8.47 ± 0.59	8.90 ± 0.18	9.10 ± 0.08	9.12 ± 0.09

(C)									
24h	1x MIC SXT	1/2x MIC SXT	1/4x MIC SXT	Without SXT	48h	1x MIC SXT	1/2x MIC SXT	1/4x MIC SXT	Without SXT
1x MIC TGC	4.81 ± 0.79**	5.14 ± 0.75**	5.21 ± 0.76**	6.95 ± 1.04	1x MIC TGC	3.89 ± 1.84**	5.18 ± 1.30***	5.98 ± 1.89	8.45 ± 1.33
1/2x MIC TGC	6.01 ± 1.00	6.02 ± 1.02**	6.35 ± 1.38**	8.39 ± 0.46	1/2x MIC TGC	5.85 ± 1.30	6.88 ± 1.36	7.91 ± 1.46	9.12 ± 0.16
1/4x MIC TGC	6.49 ± 0.92	7.19 ± 1.20	7.64 ± 1.06	8.81 ± 0.13	1/4x MIC TGC	6.74 ± 1.50	7.91 ± 1.24	8.88 ± 0.23	8.90 ± 0.21
Without TGC	6.28 ± 0.81	7.64 ± 0.72	8.67 ± 0.43	9.08 ± 0.05	Without TGC	6.44 ± 1.11	8.70 ± 0.55	8.97 ± 0.12	9.10 ± 0.21

Colony counts are shown as the log means ± standard deviations. \*  $p < 0.05$ ; \*\*  $p < 0.01$ ; \*\*\*  $p < 0.001$ .

that FOS exhibited potent *in vitro* activity against *S. maltophilia*. All these findings may suggest the potential role of FOS in treating *S. maltophilia* infections.

In line with previous reports (Brooke, 2012, 2021; Santos Carvalhais et al., 2021; Strateva et al., 2023), we observed that all of the tested *S. maltophilia* isolates exhibited moderate-to-strong biofilm formation, which could further increase their resistance to antimicrobial challenge. To overcome this complicated situation, we assessed the activity of various antibiotic combination regimens against seven *S. maltophilia* isolates with strong biofilm formation to find possible solutions. In this study, we tested the inhibitory effect of different combination regimens using time-killing and

broth methods and found that compared to monotherapy, combination therapies, especially ATM-CLA plus LVX, CZA plus LVX and SXT plus TGC, exhibited higher inhibitory activity against these isolates. However, the synergistic effect of combination therapy was not consistently observed. Wang et al. reported that compared to azithromycin or fluoroquinolone (FQ) alone, a combination of azithromycin and FQs significantly reduced the biofilm-inhibiting effect against *S. maltophilia* preformed biofilms (Wang et al., 2016). Furthermore, the present finding based on *in vitro* study cannot be directly translated to clinical responses. A retrospective study of 255 patients with *S. maltophilia* pneumonia showed that there was no significant difference in terms of clinical



TABLE 3 The association between antibiotic resistance genes and MIC values of corresponding antibiotics.

Isolate	Metallo-β-lactamase			Clavulanic acid-sensitive cephalosporinase		Quinolones			TMP-SMX			TMP		TMP-SMX
	L1	DOR	ETP	L2	CAZ	Smqnr	LVX	MOX	Sul1	Sul2	Sul3	dfrA12	dfrA17	
SM 1	+	>16	>16	-	>128	+	1	0.25	-	-	-	-	-	≤0.25/4.75
SM 7	-	>16	>16	-	64	+	1	0.5	-	-	-	-	-	≤0.25/4.75
SM 8	-	>16	>16	+	128	+	0.5	0.25	-	-	-	-	-	≤0.25/4.75
SM 9	-	>16	>16	+	32	+	2	0.5	-	-	-	-	-	≤0.25/4.75
SM 14	-	>16	>16	+	64	+	4	2	-	-	-	-	-	≤0.25/4.75
SM 15	-	>16	>16	+	>128	+	2	1	-	-	-	-	-	≤0.25/4.75
SM 19	-	>16	>16	+	>128	+	64	8	-	-	-	-	-	>16/304
SM 20	+	>16	>16	+	>128	-	1	0.5	-	-	-	-	-	≤0.25/4.75
SM 21	+	>16	>16	+	>128	+	0.5	0.25	-	-	-	-	-	≤0.25/4.75
SM 22	+	>16	>16	+	>128	-	2	2	-	-	-	-	-	≤0.25/4.75
SM 23	-	>16	>16	+	>128	+	8	4	-	-	-	-	-	≤0.25/4.75
SM 24	+	>16	>16	+	>128	+	2	1	-	-	-	-	-	≤0.25/4.75
SM 25	-	>16	>16	+	>128	-	1	1	-	-	-	-	-	≤0.25/4.75
SM 27	+	>16	>16	+	>128	+	8	4	+	-	-	-	-	≤0.25/4.75
SM 32	+	>16	>16	+	>128	+	2	0.5	-	-	-	-	-	≤0.25/4.75
SM 33	-	>16	>16	-	>128	-	32	16	-	-	-	-	-	≤0.25/4.75
SM 34	-	>16	>16	+	>128	+	8	4	-	-	-	-	-	≤0.25/4.75
SM 35	+	>16	>16	-	>128	+	4	1	-	-	-	-	-	≤0.25/4.75
SM 37	-	>16	>16	+	32	+	1	0.25	-	-	-	-	-	≤0.25/4.75
SM 40	+	>16	>16	+	>128	+	8	8	-	-	-	-	-	≤0.25/4.75
SM 42	-	>16	>16	-	>128	+	8	4	-	-	-	-	-	≤0.25/4.75
SM 50	-	>16	>16	-	8	-	1	0.25	-	-	-	-	-	≤0.25/4.75
SM 54	+	>16	>16	-	>128	+	4	2	-	-	-	-	-	≤0.25/4.75
SM 56	-	>16	>16	-	32	+	1	0.25	-	-	-	-	-	≤0.25/4.75
SM 58	-	>16	>16	-	32	+	1	0.25	-	-	-	-	-	≤0.25/4.75
SM 59	+	>16	>16	-	>128	+	2	0.5	-	-	-	-	-	≤0.25/4.75
SM 60	-	>16	>16	-	16	-	1	0.5	-	-	-	-	-	≤0.25/4.75
SM 61	+	>16	>16	-	>128	+	8	8	+	-	-	-	-	>16/304
SM 62	+	>16	>16	-	>128	+	2	1	-	-	-	-	-	≤0.25/4.75
SM 63	-	>16	>16	-	32	-	32	32	+	-	-	-	-	>16/304
SM 64	+	16	8	-	32	+	4	1	-	-	-	-	-	≤0.25/4.75
SM 65	-	>16	>16	-	128	+	32	32	-	-	-	-	-	≤0.25/4.75

efficacy and resistance development between combination therapy and monotherapy (Shah et al., 2019). Further clinical study is warranted.

Although the common antibiotic-resistant mechanisms were assessed in this study, we found that the prevalence of the antibiotic resistance gene was lower than Bostanghadiri's et al. (2019) study in Iran. In addition, we observed that the resistant gene cannot be totally translated to antibiotic resistance in the *in vitro* study. Like previous study (Yinsai et al., 2023), we found that the L1/L2 β-lactamase, which were associated the resistance to clavulanic acid

and hydrolyses carbapenems, cephalosporins, penicillin and aztreonam (Chang et al., 2015; Bostanghadiri et al., 2019) and sul1 genes were correlated with resistance to β-lactam and TMP-SMX. In contrast, less than half of the isolates with Smqnr, which was encoding the pentapeptide repeat protein that protects both topoisomerase IV and gyrase from the quinolones (Sanchez et al., 2009; Chang et al., 2015; Kanamori et al., 2015; Bostanghadiri et al., 2019) were found to be susceptible to LVX and MOX, which was consistent with the findings of previous studies (Bostanghadiri et al., 2019; Ebrahim-Saraie et al., 2019). Similarly, the

TABLE 4 The association between the biofilm-forming gene and ability (OD $\leq$ ODc nonbiofilm formation: -; ODc<OD $\leq$ 2 x ODc weak biofilm formation: +; 2 x ODc<OD $\leq$ 4 x ODc moderate biofilm formation: ++; 4 x ODc<OD strong biofilm formation: +++).

Isolate	Gene			Ability
	spgM	rpfF	rmlA	
SM 1	+	+	+	+++
SM 7	+	-	+	+++
SM 8	+	-	+	+++
SM 9	-	+	+	+++
SM 14	+	-	+	+++
SM 15	+	+	+	++
SM 19	+	+	+	+++
SM 20	+	+	+	+++
SM 21	+	+	+	+++
SM 22	+	+	+	+++
SM 23	+	-	+	+++
SM 24	+	+	+	+++
SM 25	+	-	-	+++
SM 27	+	-	+	+++
SM 32	+	+	-	+++
SM 33	-	-	-	++
SM 34	+	-	+	+++
SM 35	+	+	+	+++
SM 37	+	-	-	+++
SM 40	+	+	+	+++
SM 42	+	+	+	++
SM 50	-	-	-	+++
SM 54	+	+	+	+++
SM 56	-	-	+	+++
SM 58	+	-	+	+++
SM 59	+	+	+	+++
SM 60	+	-	+	+++
SM 61	+	-	+	+++
SM 62	+	+	+	+++
SM 63	+	-	+	++
SM 64	+	+	-	+++
SM 65	+	+	+	+++

biofilm-related genes *spgM*, *rpfF*, and *rmlA* (Bostanghadiri et al., 2021) were not related to biofilm formation ability, which was also compatible with previous reports (Pompilio et al., 2011). Although some target genes might be missing in this study due to mutations in the primer-binding sites associated with new sequences (Mojica et al., 2019), our findings indicated that the antibiotic resistance phenotype might not be fully caused by these antibiotic-resistance

or biofilm-formation genes, suggesting that further research is warranted.

In conclusion, *S. maltophilia* remained resistant to most antibiotics, including LVX and  $\beta$ -lactam/ $\beta$ -lactamases; however, the activity of TGC, FOS and SXT remained potent. Although all of the tested *S. maltophilia* isolates exhibited moderate-to-strong biofilm formation, combination therapies, especially ATM-CLA plus LVX,

CZA plus LVX and SXT plus TGC, exhibited a higher inhibitory activity for these isolates. Finally, the antibiotic resistance phenotype might not be fully caused by the common antibiotic-resistance or biofilm-formation gene.

## Data availability statement

The original contributions presented in the study are included in the article/Supplementary material, further inquiries can be directed to the corresponding author.

## Author contributions

B-AS, C-CC, and H-JT contributed to conception and design of the study. C-CC, H-JC, H-YL, C-HT, C-CL, and C-MC organized the database. C-CC, H-JC, H-YL, and C-HT performed the statistical analysis. B-AS, C-CC, and CCL wrote the first draft of the manuscript. H-JT and C-MC wrote sections of the manuscript. All authors contributed to the article and approved the submitted version.

## References

- Avison, M. B., Higgins, C. S., Von Heldreich, C. J., Bennett, P. M., and Walsh, T. R. (2001). Plasmid location and molecular heterogeneity of the L1 and L2 beta-lactamase genes of *Stenotrophomonas maltophilia*. *Antimicrob. Agents Chemother.* 45, 413–419. doi: 10.1128/AAC.45.2.413-419.2001
- Bostanghadiri, N., Ardebili, A., Ghalavand, Z., Teymouri, S., Mirzarazi, M., Goudarzi, M., et al. (2021). Antibiotic resistance, biofilm formation, and biofilm-associated genes among *Stenotrophomonas maltophilia* clinical isolates. *BMC. Res. Notes* 14:151. doi: 10.1186/s13104-021-05567-y
- Bostanghadiri, N., Ghalavand, Z., Fallah, F., Yadegar, A., Ardebili, A., Tarashi, S., et al. (2019). Characterization of Phenotypic and Genotypic Diversity of *Stenotrophomonas maltophilia* Strains Isolated From Selected Hospitals in Iran. *Front. Microbiol.* 10:1191. doi: 10.3389/fmicb.2019.01191
- Brooke, J. S. (2012). *Stenotrophomonas maltophilia*: an emerging global opportunistic pathogen. *Clin. Microbiol. Rev.* 25, 2–41. doi: 10.1128/CMR.00019-11
- Brooke, J. S. (2021). Advances in the Microbiology of *Stenotrophomonas maltophilia*. *Clin. Microbiol. Rev.* 34:e0003019. doi: 10.1128/CMR.00030-19
- Ceri, H., Olson, M. E., Stremick, C., Read, R. R., Morck, D., and Buret, A. (1999). The Calgary Biofilm Device: new technology for rapid determination of antibiotic susceptibilities of bacterial biofilms. *J. Clin. Microbiol.* 37, 1771–1776. doi: 10.1128/JCM.37.6.1771-1776.1999
- Cervia, J. S., Ortolano, G. A., and Canonica, F. P. (2008). Hospital tap water as a source of *Stenotrophomonas maltophilia* infection. *Clin. Infect. Dis.* 46, 1485–1487. doi: 10.1086/587180
- Chang, P. C., Chen, C. C., Lu, Y. C., Lai, C. C., Huang, H. L., Chuang, Y. C., et al. (2018). The impact of inoculum size on the activity of cefoperazone-sulbactam against multidrug resistant organisms. *J. Microbiol. Immunol. Infect.* 51, 207–213. doi: 10.1016/j.jmii.2017.08.026
- Chang, Y. T., Lin, C. Y., Chen, Y. H., and Hsueh, P. R. (2015). Update on infections caused by *Stenotrophomonas maltophilia* with particular attention to resistance mechanisms and therapeutic options. *Front. Microbiol.* 6:893. doi: 10.3389/fmicb.2015.00893
- CLSI. (2022). “Performance Standards for Antimicrobial Susceptibility Testing”, In *CLSI Supplement M100*. 32th Ed. Wayne, PA: Clinical and Laboratory Standards Institute.
- De Mauri, A., Torreggiani, M., Chiarinotti, D., Andreoni, S., Molinari, G., and De Leo, M. (2014). *Stenotrophomonas maltophilia*: an emerging pathogen in dialysis units. *J. Med. Microbiol.* 63, 1407–1410. doi: 10.1099/jmm.0.076513-0
- Ebrahim-Saraie, H. S., Heidari, H., Soltani, B., Mardaneh, J., and Motamedifar, M. (2019). Prevalence of antibiotic resistance and integrons, sul and Smqr genes in clinical isolates of *Stenotrophomonas maltophilia* from a tertiary care hospital in Southwest Iran. *Iran. J. Basic Med. Sci.* 22, 872–877. doi: 10.22038/ijbms.2019.31291.7540
- Falagas, M. E., Kastoris, A. C., Vouloumanou, E. K., Rafailidis, P. I., Kapaskelis, A. M., and Dimopoulos, G. (2009). Attributable mortality of *Stenotrophomonas maltophilia* infections: a systematic review of the literature. *Future Microbiol.* 4, 1103–1109. doi: 10.2217/fmb.09.84
- Flores-Treviño, S., Bocanegra-Ibarias, P., Camacho-Ortiz, A., Morfin-Otero, R., Salazar-Sesatty, H. A., and Garza-González, E. (2019). *Stenotrophomonas maltophilia* biofilm: its role in infectious diseases. *Expert Rev. Anti-Infect. Ther.* 17, 877–893. doi: 10.1080/14787210.2019.1685875
- Gibb, J., and Wong, D. W. (2021). Antimicrobial Treatment Strategies for *Stenotrophomonas maltophilia*: A Focus on Novel Therapies. *Antibiotics (Basel)* 10:1226. doi: 10.3390/antibiotics10101226
- Guyot, A., Turton, J. F., and Garner, D. (2013). Outbreak of *Stenotrophomonas maltophilia* on an intensive care unit. *J. Hosp. Infect.* 85, 303–307. doi: 10.1016/j.jhin.2013.09.007
- Hsueh, S. C., Lee, Y. J., Huang, Y. T., Liao, C. H., Tsuji, M., and Hsueh, P. R. (2019). In vitro activities of cefiderocol, ceftolozane/tazobactam, ceftazidime/avibactam and other comparative drugs against imipenem-resistant *Pseudomonas aeruginosa* and *Acinetobacter baumannii*, and *Stenotrophomonas maltophilia*, all associated with bloodstream infections in Taiwan. *J. Antimicrob. Chemother.* 74, 380–386. doi: 10.1093/jac/dky425
- Hu, R. M., Huang, K. J., Wu, L. T., Hsiao, Y. J., and Yang, T. C. (2008). Induction of L1 and L2 beta-lactamases of *Stenotrophomonas maltophilia*. *Antimicrob. Agents Chemother.* 52, 1198–1200. doi: 10.1128/AAC.00682-07
- Hu, L. F., Xu, X. H., Li, H. R., Gao, L. P., Chen, X., Sun, N., et al. (2018). Surveillance of antimicrobial susceptibility patterns among *Stenotrophomonas maltophilia* isolated in China during the 10-year period of 2005–2014. *J. Chemother.* 30, 25–30. doi: 10.1080/1120009X.2017.1378834
- Jean, S. S., Lee, Y. L., Liu, P. Y., Lu, M. C., Ko, W. C., and Hsueh, P. R. (2022). Multicenter surveillance of antimicrobial susceptibilities and resistance mechanisms among Enterobacterales species and non-fermenting Gram-negative bacteria from different infection sources in Taiwan from 2016 to 2018. *J. Microbiol. Immunol. Infect.* 55, 463–473. doi: 10.1016/j.jmii.2021.07.015
- Jumaa, P. A., Sonnevend, A., Pál, T., El Hag, M., Amith, R., and Trad, O. (2006). The molecular epidemiology of *Stenotrophomonas maltophilia* bacteraemia in a tertiary referral hospital in the United Arab Emirates 2000–2004. *Ann. Clin. Microbiol. Antimicrob.* 5:32. doi: 10.1186/1476-0711-5-32
- Kanamori, H., Yano, H., Tanouchi, A., Kakuta, R., Endo, S., Ichimura, S., et al. (2015). Prevalence of Smqr and plasmid-mediated quinolone resistance determinants in clinical isolates of *Stenotrophomonas maltophilia* from Japan: novel variants of Smqr. *New Microbes New Infect.* 7, 8–14. doi: 10.1016/j.nmni.2015.04.009
- Khan, I. U., Mirza, I. A., Ikram, A., Ali, S., Hussain, A., and Ghafoor, T. (2014). In vitro activity of fosfomicin tromethamine against extended spectrum beta-lactamase producing urinary tract bacteria. *J. Coll. Physicians Surg. Pak.* 24, 914–917.
- Li, X. Z., Zhang, L., Mckay, G. A., and Poole, K. (2003). Role of the acetyltransferase AAC(6)-Iz modifying enzyme in aminoglycoside resistance in *Stenotrophomonas maltophilia*. *J. Antimicrob. Chemother.* 51, 803–811. doi: 10.1093/jac/dkg148
- Lu, C. L., Liu, C. Y., Huang, Y. T., Liao, C. H., Teng, L. J., Turnidge, J. D., et al. (2011). Antimicrobial susceptibilities of commonly encountered bacterial isolates to fosfomicin

## Funding

This study was supported by Chi-Mei Medical Center Research Foundation (CLFHR11111 and CMFHT11202).

## Conflict of interest

The authors declare that the research was conducted in the absence of any commercial or financial relationships that could be construed as a potential conflict of interest.

## Publisher's note

All claims expressed in this article are solely those of the authors and do not necessarily represent those of their affiliated organizations, or those of the publisher, the editors and the reviewers. Any product that may be evaluated in this article, or claim that may be made by its manufacturer, is not guaranteed or endorsed by the publisher.

- determined by agar dilution and disk diffusion methods. *Antimicrob. Agents Chemother.* 55, 4295–4301. doi: 10.1128/AAC.00349-11
- Majumdar, R., Karthikeyan, H., Senthilnathan, V., and Sugumar, S. (2022). Review on *Stenotrophomonas maltophilia*: An Emerging Multidrug-resistant Opportunistic Pathogen. *Recent Pat. Biotechnol.* 16, 329–354. doi: 10.2174/1872208316666220512121205
- Mojica, M. F., Humphries, R., Lipuma, J. J., Mathers, A. J., Rao, G. G., Shelburne, S. A., et al. (2022). Clinical challenges treating *Stenotrophomonas maltophilia* infections: an update. *JAC Antimicrob. Resist.* 4:dla040. doi: 10.1093/jacamr/dla040
- Mojica, M. F., Rutter, J. D., Taracila, M., Abriata, L. A., Fouts, D. E., Papp-Wallace, K. M., et al. (2019). Population Structure, Molecular Epidemiology, and  $\beta$ -Lactamase Diversity among *Stenotrophomonas maltophilia* Isolates in the United States. *MBio* 10, e00405–e00419. doi: 10.1128/mBio.00405-19
- Mori, M., Tsunemine, H., Imada, K., Ito, K., Kodaka, T., and Takahashi, T. (2014). Life-threatening hemorrhagic pneumonia caused by *Stenotrophomonas maltophilia* in the treatment of hematologic diseases. *Ann. Hematol.* 93, 901–911. doi: 10.1007/s00277-014-2028-x
- Morrissey, I., Olesky, M., Hawser, S., Lob, S. H., Karlowsky, J. A., Corey, G. R., et al. (2019). In Vitro Activity of Eravacycline against Gram-Negative Bacilli Isolated in Clinical Laboratories Worldwide from 2013 to 2017. *Antimicrob. Agents Chemother.* 64:e01699-19. doi: 10.1128/AAC.01699-19
- Nyc, O., and Matejková, J. (2010). *Stenotrophomonas maltophilia*: Significant contemporary hospital pathogen - review. *Folia Microbiol. (Praha)* 55, 286–294. doi: 10.1007/s12223-010-0043-4
- Pompilio, A., Pomponio, S., Crocetta, V., Gherardi, G., Verginelli, F., Fiscarelli, E., et al. (2011). Phenotypic and genotypic characterization of *Stenotrophomonas maltophilia* isolates from patients with cystic fibrosis: genome diversity, biofilm formation, and virulence. *BMC Microbiol.* 11:159. doi: 10.1186/1471-2180-11-159
- Pompilio, A., Ranalli, M., Piccirilli, A., Perilli, M., Vukovic, D., Savic, B., et al. (2020). Biofilm Formation among *Stenotrophomonas maltophilia* Isolates Has Clinical Relevance: The ANSELM Prospective Multicenter Study. *Microorganisms* 9:49. doi: 10.3390/microorganisms9010049
- Sanchez, M. B., Hernandez, A., and Martinez, J. L. (2009). *Stenotrophomonas maltophilia* drug resistance. *Future Microbiol.* 4, 655–660. doi: 10.2217/fmb.09.45
- Santos Carvalhais, B. E., Souza, E. S. C., and Dos Santos, K. V. (2021). Effect of antimicrobials on *Stenotrophomonas maltophilia* biofilm. *Future Microbiol.* 16, 83–93. doi: 10.2217/fmb-2020-0115
- Shah, M. D., Coe, K. E., El Boghdady, Z., Wardlow, L. C., Dela-Pena, J. C., Stevenson, K. B., et al. (2019). Efficacy of combination therapy versus monotherapy in the treatment of *Stenotrophomonas maltophilia* pneumonia. *J. Antimicrob. Chemother.* 74, 2055–2059. doi: 10.1093/jac/dkz116
- Shields, R. K., Clancy, C. J., Pasculle, A. W., Press, E. G., Haidar, G., Hao, B., et al. (2018). Verification of Ceftazidime-Avibactam and Ceftolozane-Tazobactam Susceptibility Testing Methods against Carbapenem-Resistant Enterobacteriaceae and *Pseudomonas aeruginosa*. *J. Clin. Microbiol.* 56:e01093-17. doi: 10.1128/JCM.01093-17
- Shortridge, D., Streit, J. M., Mendes, R., and Castanheira, M. (2022). In Vitro Activity of Cefiderocol against U.S. and European Gram-Negative Clinical Isolates Collected in 2020 as Part of the SENTRY Antimicrobial Surveillance Program. *Microbiol Spectr* 10:e0271221. doi: 10.1128/spectrum.02712-21
- Singhal, L., Kaur, P., and Gautam, V. (2017). *Stenotrophomonas maltophilia*: From trivial to grievous. *Indian J. Med. Microbiol.* 35, 469–479. doi: 10.4103/ijmm.IJMM\_16\_430
- Stepanovic, S., Vukovic, D., Dakic, I., Savic, B., and Svabic-Vlahovic, M. (2000). A modified microtiter-plate test for quantification of staphylococcal biofilm formation. *J. Microbiol. Methods* 40, 175–179. doi: 10.1016/S0167-7012(00)00122-6
- Strateva, T., Trifonova, A., Sirakov, I., Borisova, D., Stancheva, M., Keuleyan, E., et al. (2023). Analysis of biofilm formation in nosocomial *Stenotrophomonas maltophilia* isolates collected in Bulgaria: An 11-year study (2011–2022). *Acta Microbiol. Immunol. Hung.* 70, 11–21. doi: 10.1556/030.2023.01920
- Tamma, P. D., Aitken, S. L., Bonomo, R. A., Mathers, A. J., Van Duin, D., and Clancy, C. J. (2022). Infectious Diseases Society of America Guidance on the Treatment of AmpC  $\beta$ -Lactamase-Producing Enterobacteriales, Carbapenem-Resistant *Acinetobacter baumannii*, and *Stenotrophomonas maltophilia* Infections. *Clin. Infect. Dis.* 74, 2089–2114. doi: 10.1093/cid/ciab1013
- Tang, H. J., Chen, C. C., Cheng, K. C., Toh, H. S., Su, B. A., Chiang, S. R., et al. (2012). In vitro efficacy of fosfomicin-containing regimens against methicillin-resistant *Staphylococcus aureus* in biofilms. *J. Antimicrob. Chemother.* 67, 944–950. doi: 10.1093/jac/dkr535
- Tang, H. J., Lin, Y. T., Chen, C. C., Chen, C. W., Lu, Y. C., Ko, W. C., et al. (2021). Molecular characteristics and in vitro effects of antimicrobial combinations on planktonic and biofilm forms of *Elizabethkingia anophelis*. *J. Antimicrob. Chemother.* 76, 1205–1214. doi: 10.1093/jac/dkab018
- Tenover, F. C., Arbeit, R. D., Goering, R. V., Mickelsen, P. A., Murray, B. E., Persing, D. H., et al. (1995). Interpreting chromosomal DNA restriction patterns produced by pulsed-field gel electrophoresis: criteria for bacterial strain typing. *J. Clin. Microbiol.* 33, 2233–2239. doi: 10.1128/jcm.33.9.2233-2239.1995
- Trifonova, A., and Strateva, T. (2019). *Stenotrophomonas maltophilia* - a low-grade pathogen with numerous virulence factors. *Infect. Dis.* 51, 168–178. doi: 10.1080/23744235.2018.1531145
- Umar, Z., Ashfaq, S., Parikh, A., Ilyas, U., Foster, A., Bhangal, R., et al. (2022). *Stenotrophomonas Maltophilia* and Urinary Tract Infections: a systematic review. *Cureus* 14:e26184
- Wang, A., Wang, Q., Kudinha, T., Xiao, S., and Zhuo, C. (2016). Effects of Fluoroquinolones and Azithromycin on Biofilm Formation of *Stenotrophomonas maltophilia*. *Sci. Rep.* 6:29701. doi: 10.1038/srep29701
- Wu, H., Wang, J. T., Shiau, Y. R., Wang, H. Y., Lauderdale, T. L., and Chang, S. C. (2012). A multicenter surveillance of antimicrobial resistance on *Stenotrophomonas maltophilia* in Taiwan. *J. Microbiol. Immunol. Infect.* 45, 120–126. doi: 10.1016/j.jmii.2011.09.028
- Yinsai, O., Deedum, M., and Duangsonk, K. (2023). Genotypic Diversity, Antibiotic Resistance, and Virulence Phenotypes of *Stenotrophomonas maltophilia* Clinical Isolates from a Thai University Hospital Setting. *Antibiotics (Basel)* 12:410. doi: 10.3390/antibiotics12020410