



OPEN ACCESS

EDITED BY

Naser Safaie,
Tarbiat Modares University, Iran

REVIEWED BY

Hong Mingsheng,
China West Normal University, China
Balasubramanian Ramakrishnan,
Indian Agricultural Research Institute
(ICAR), India
Ruchir Mishra,
University of Florida, United States

*CORRESPONDENCE

Yanmei Peng
✉ 271853145@qq.com

RECEIVED 13 February 2023

ACCEPTED 24 April 2023

PUBLISHED 17 May 2023

CITATION

Liang X, Zhou K, Li P, Wan D, Liu J, Yi X and Peng Y (2023) Characteristics of endophytic bacteria and active ingredients in the *Eucommia* cortex from different origins. *Front. Microbiol.* 14:1164674. doi: 10.3389/fmicb.2023.1164674

COPYRIGHT

© 2023 Liang, Zhou, Li, Wan, Liu, Yi and Peng. This is an open-access article distributed under the terms of the [Creative Commons Attribution License \(CC BY\)](https://creativecommons.org/licenses/by/4.0/). The use, distribution or reproduction in other forums is permitted, provided the original author(s) and the copyright owner(s) are credited and that the original publication in this journal is cited, in accordance with accepted academic practice. No use, distribution or reproduction is permitted which does not comply with these terms.

Characteristics of endophytic bacteria and active ingredients in the *Eucommia* cortex from different origins

Xuejuan Liang¹, Kang Zhou², Penghui Li¹, Dan Wan¹, Jing Liu³, Xin Yi² and Yanmei Peng^{1*}

¹Innovative Medicine Institute of Traditional Chinese Medicine, Hunan Academy of Chinese Medicine, Changsha, China, ²College of Pharmacy, Hunan University of Chinese Medicine, Changsha, China, ³College of Chinese Medicine, Hunan University of Chinese Medicine, Changsha, China

Objective: This study aimed to explore the differences between *Eucommia* cortex (EC) endophytic bacteria from different origins and their effects on the active ingredients of EC.

Methods: A total of 10 samples of *Eucommia ulmoides* Oliv. (*E. ulmoides*) bark were collected from each of the following four regions, namely, Zunyi in Guizhou (GZ), Baokang in Hubei (HUB), Cili in Hunan (HUN), and Loyang in Shaanxi (SX). Subsequently, the contents of the main active ingredients of EC were determined by ultra-performance liquid chromatography (UPLC), and the endophytic bacteria of EC were detected by 16S rRNA sequencing. The relationship between the dominant endophytic bacteria and the active ingredients was investigated by correlation analysis.

Results: A total of 4,551 different operational taxonomic units (OTUs) were delineated in the four groups of samples, of which 585, 439, 957, and 684 genera were annotated from GZ, HUB, HUN, and SX, respectively. The richness and diversity of endophytic bacteria from different origins were ranked as HUN > SX > GZ or HUB. The analysis demonstrated that there was no significant correlation between the diversity and richness of endophytic bacteria in EC and its active ingredients. Nevertheless, notable variations in the community structures of endophytic bacteria were observed across different origins, and they had a considerable impact on certain active ingredients in EC. *Comamonas* and *Cedecea* were the dominant genera. Characteristic bacteria of different origins could be clearly distinguished. Simultaneous, significant correlations had been identified between some characteristic endophytic bacteria derived from different origins and active ingredients of EC. For example, *Delftia*, a characteristic bacterium from GZ, showed a significant positive correlation with pinoresinol diglucoside. *Paenibacillus* and *Klebsiella*, two characteristic bacteria from HUB, exhibited significant positive correlations with geniposidic acid. *Thauera*, a characteristic bacterium from HUN, demonstrated a significant positive correlation with geniposide. *Brevundimonas*, a characteristic bacterium from SX, displayed a significant positive correlation with pinoresinol diglucoside.

Conclusion: There was a complex correlation between EC endophytic bacteria and active ingredient content, while EC endophytic bacteria from different origins had significant differences at the genus level.

KEYWORDS

E. ulmoides, *Eucommia* cortex, endophytic bacteria, origin, active ingredient

1. Introduction

E. ulmoides belongs to the deciduous tree of Eucommiaceae and *Eucommia*, mainly distributed in Guizhou, Hunan, Shaanxi, and Hubei provinces, south of the Qinling mountains. The cortex of *E. ulmoides* is a drug used in traditional Chinese medicine (TCM), commonly used to treat osteoporosis, soreness of the waist and knees, dizziness, fetal movement disturbance, and other symptoms, and has a medical history of nearly 2000 years (Feng et al., 2016). Modern studies have shown that iridoids (including aucubin, geniposide, and geniposidic acid) and lignans (including pinoresinol diglucoside and syringaresinol diglucoside) are the main active ingredients of EC (Hussain et al., 2016; Huang et al., 2021). Among them, aucubin and geniposide have anti-diabetic, anti-osteoporosis, anti-hypertension, and anti-inflammatory biological activities (Zeng et al., 2020), while pinoresinol diglucoside, geniposide, and geniposidic acid can promote osteoblast proliferation and inhibit osteoclast activity (Ha et al., 2003). Geniposidic acid and syringaresinol diglucoside are pharmacodynamic ingredients exerting the antihypertensive effect of EC (He et al., 2014; Ishimitsu et al., 2021).

The contents of active ingredients in medicinal plants are closely related to their unique ecological environment, which includes not only abiotic factors, such as light, climate, and temperature, but also the microbial ecology with plants (Yang J. et al., 2019). Symbiotic endophytes widely inhabit plant tissues without causing obvious abnormal host conditions. Many studies have shown that endophytes play vital roles in plant growth, development, disease control, and stress resistance (Köberl et al., 2013; Liu et al., 2022; Pathak et al., 2022). Meanwhile, certain endophytes can also promote the synthesis of active metabolites in medicinal plants by producing exogenous inducers or by producing similar metabolites in the host through the related synthesis pathway, thereby facilitating the accumulation of medicinal ingredients in plants (Zhong et al., 2016; Rustamova et al., 2020). For example, Song et al. (2017) reported that the endophytic bacterium LB 5-3 of *Radix Ginseng* could promote the accumulation of ginsenoside in the adventitious root cultures. Liu et al. (2020) reported that the dominant endophytic bacteria *Microbacterium* and *norank_f_7B-8* in *Coptidis rhizome* had significant correlations in the synthesis of berberine. In terms of EC, Liu et al. (2011) isolated three strains of fungi with the effect of producing pinoresinol diglucoside among the EC, and the one with the highest yield was identified as *Phomopsis* sp. The authors' further research (Shi et al., 2012) also certified that the microbial PDG by fermentation was the same as plant-derived PDG. Moreover, the contents of active ingredients and the community diversity of endophytes in different ecological environments EC also differ (Cai et al., 2014; Liang et al., 2014). A notable example is Yan et al. (2017) examining EC ingredients from Meitan in Guizhou, Lichuan in Hubei, and Ningqiang in Shaanxi. They found that the active ingredients of EC ingredients from different origins could be distinguished, and there were different patterns of variation in 14 common ingredients. In our previous report (Liang et al., 2014), the EC endophytic fungal composition of three origins,

GZ, HUN, and SX, were significantly different. However, the majority of the current research studies on EC endophytes are focused on fungi, with a limited investigation into bacteria as endophytes in EC, and the existing studies primarily targeted the detection of culturable endophytic bacteria (Zhao et al., 2016).

In addition, TCM focuses on the geographic location of high-quality herbs, i.e., "Daodi." However, the current wild resources of *E. ulmoides* are scarce, the boundaries of Daodi are blurred, the structure of endophytic bacteria of *E. ulmoides* is unclear, and the quality of herbs varies. The establishment of quality evaluation and the Daodi identification method of EC could help to clarify the Daodi production area of EC and improve the quality of herbs. Therefore, this study analyzed the characteristics of endophytic bacteria in EC from GZ, HUN, SX, and HUB by 16S rRNA sequencing technology and performed correlation analysis with their active ingredients in order to explore the distribution characteristics of endophytic bacteria in high-quality EC. The results can provide an experimental basis for clarifying the role of characteristic bacteria in forming EC quality and screening characteristic bacteria of the origins.

2. Material and methods

2.1. Sample collection

The fresh cortex of *E. ulmoides* was collected from Zunyi in Guizhou (GZ), Cili in Hunan (HUN), Loyang in Shaanxi (SX), and Baokang in Hubei (HUB), respectively. The sample collection information is shown in Table 1. In total, 40 healthy *E. ulmoides* trees above 6 years old were randomly selected in different sampling areas. At 1–1.5 m above the ground, fresh bark samples were peeled from each tree, immediately put in a sterile plastic bag, and transported to the laboratory within 48 h at 4°C.

2.2. Sample processing

The collected EC was split into two parts. One was microwave-dried for 3 min, dried at 50°C, and stored for the detection of active ingredients. The other sample was cut into small pieces of ~3 cm × 3 cm with a sterile knife, rinsed with sterile water for 30 s, blotted with a sterile filter paper, soaked in 75% ethanol for 2 min and in 5.5% sodium hypochlorite solution for 3 min, then rinsed with 75% ethanol for 30 s, washed with sterile water three times, and blotted with the sterile filter paper. Finally, the phellem layer was scraped off, and the tissue pieces of the phloem of ~0.4 cm² in the center were taken. After uniformly mixed, the tissue pieces were stored in 10 ml sterile centrifuge tubes at –80°C for DNA extraction of endophytic microbiota. The sample DNA extraction, amplification, and library sequencing were provided by Majorbio Bio-Pharm Technology Co. Ltd. (Shanghai, China).

TABLE 1 Sample collection information.

Sample number	Sample size	Origins	Acquisition time
GZ1 to GZ10	10	Zunyi county, Guizhou province	2021.5.7
HUB1 to HUB10	10	Baokang county, Hubei province	2021.5.24
HUN1 to HUN10	10	Cili county, Hunan province	2021.4.28
SX1 to SX10	10	Loyang county, Shaanxi province	2021.5.9

2.3. Active ingredient detection

2.3.1. Chemicals and reagents

Five reference compounds, including aucubin, geniposidic acid, geniposide, pinoreosin diglucoside, and syringaresinol diglucoside, were purchased from Chengdu Chroma-Biotechnology Co., Ltd. (Chengdu, China). The purities of all the above reference substances were more than 98% as determined by high-performance liquid chromatography (HPLC) analysis. HPLC-grade formic acid, methanol, and acetonitrile were purchased from Merck (Darmstadt, Germany).

2.3.2. Preparation of sample extract

After the cork was removed, the phloem of the dried EC was cut, and then kneaded into floccules. In total, 2 g of the floccules was added to 30 ml of 50% methanol, weighed, and then treated with ultrasound (500 W, 40 kHz) for 30 min at room temperature. It was weighed again after cooling, and 50% methanol was used to make up for the loss of weight. The filtrate was obtained by filtration using a 0.22 μm Millipore filter unit for future UPLC analysis.

2.3.3. UPLC analysis

The analysis of EC active ingredient contents of different origins using the UPLC method with the Agilent 1290 ultra-performance liquid chromatography (Agilent Technologies Inc, USA). Chromatographic column: waters ACQUITY UPLC[®] BEH C₁₈ 1.7 μm (2.1 \times 100 mm), column temperature: 35°C, flow rate: 0.3 ml/min, detection wavelength: 208 nm, 240 nm, injection volume: 2 μl , mobile phase system: acetonitrile (A) –0.1% formic acid water (B), gradient elution (mobile phase): 0–4 min, 3–7% A; 4–10 min, 7–3% A; 0–11 min, 3–10% A; 11–25 min, 10–14% A; 25–32 min, 14–30% A; 32–34 min, 30% A; 32.01–39 min, 3% A.

2.3.4. Methodology validation

The five reference standards were weighed accurately and dissolved with methanol comparable to at least six appropriate concentrations of each compound. The precision was determined by analyzing the sample solution six consecutive times. Stability was evaluated by calculating the relative standard deviation (RSD) of signal intensity of the same tested solution at 0, 2, 4, 8, 12, 24, and 36 h. Recovery experiments were done by spiking authentic standard solutions into samples directly.

2.4. DNA extraction and PCR amplification

After surface disinfection, the DNA extraction kit (Omega Mag-Bind soil DNA kit, Norcross, GA, USA) was used to extract total microbial genomic DNA from EC samples according to the manufacturer's instructions. The quality and concentration of DNA were evaluated using 1.0% agarose gel electrophoresis and a NanoDrop[®] ND-2000 spectrophotometer (Thermo Scientific Inc., USA) and were then stored at -80°C until further use.

PCR amplification was performed on DNA that met the quality requirements. Amplification system (20 μL) comprised 5 \times FastPfu Buffer 4 μl , dNTP (2.5 mM) 2 μl , forward primer (5 μM) 0.8 μl , reverse primer (5 μM) 0.8 μl , FastPfu Polymerase 0.4 μl , BSA 0.2 μl , and DNA Template 10 ng, supplemented with ddH₂O to 20 μl . Amplification parameters were as follows: initial denaturation at 95°C for 3 min, followed by denaturing at 95°C for 30 s, annealing at 55°C for 30 s, extension at 72°C for 45 s, final extension at 72°C for 10 min, and 10°C hold, repeated for 13–15 cycles. To reduce the contamination of chloroplast DNA in plants, endophytic bacteria were sequenced using 16S V5–V7 region primers (forward primer: 799F, AACMGGATTAGATACCKG, reverse primer: 1193R, ACGTCATCCCCACCTTCC) (Wang et al., 2018). All samples were amplified in triplicate. The PCR products were extracted from 2% agarose gel and purified using the AxyPrep DNA Gel Extraction Kit (Axygen Biosciences, Union City, CA, USA) according to the manufacturer's instructions and quantified using the Quantus[™] Fluorometer (Promega, USA). Purified amplicons were pooled in equimolar amounts and paired-end sequenced on an Illumina NovaSeq PE250 platform (Illumina, San Diego, USA) according to the standard protocols by Majorbio Bio-Pharm Technology Co. Ltd.

2.5. Bioinformatics analysis

The obtained data were processed using Flash (v 1.2.11) sequence splicing, QIIME (v 1.9.1) (Caporaso et al., 2010) to generate abundance tables for each classification level, Uparse (v 11) clustering, and RDP classifier (v 2.13) classification annotation. The optimized sequences were clustered into operational taxonomic units (OTUs) with a 97% sequence similarity level. The OTU table was manually filtered, i.e., chloroplast and mitochondria sequences in all samples were removed. The taxonomy of each OTU representative sequence was analyzed by the RDP classifier against the 16S rRNA gene database (Silva v138/16s_bacteria) using a confidence threshold of 0.7. The OTU abundance dataset was normalized using a standard sequence number corresponding to the sample with the least sequences. All subsequent analyses

TABLE 2 Liner equations, precision, stability, repeatability, and recovery of quantification of five compounds.

Compounds	Liner equations	R^2	Linearity range/ μg	Precision RSD ($n = 6$)	Stability RSD ($n = 6$)	Repeatability RSD ($n = 6$)	Recovery	Recovery RSD
Aucubin	$y = 2633.2x + 780.58$	0.9996	0.214–10.64	0.47%	1.65%	1.96%	97.94%	2.89%
Geniposidic acid	$y = 3467.6x + 61.569$	0.9991	0.043–10.68	0.86%	1.04%	2.45%	103.58%	1.98%
Geniposide	$y = 8674.7x + 70.569$	0.9995	0.004–2.256	0.35%	1.58%	2.68%	98.38%	2.47%
Pinoresinol diglucoside	$y = 18485x + 361.21$	0.9990	0.042–2.124	0.80%	2.20%	2.08%	97.22%	2.39%
Syringaresinol diglucoside	$y = 7682.7x + 1.0254$	0.9988	0.076–1.520	1.29%	2.63%	2.69%	95.91%	2.92%

were performed based on the normalized data. The number of unique or common OTUs among different groups was represented using a Venn diagram. Shannon curves were used to assess whether the sequencing depth of the samples met the criteria, and Mothur (v 1.30.2) (Schloss et al., 2009) was used to calculate ACE, Chao, Shannon, and Simpson indexes to assess the alpha diversity of endophytic bacterial communities of different origins of EC (Liu et al., 2021). Among them, ACE and Chao indices were positively correlated with species richness. The Shannon index was positively correlated with species diversity. A scatter plot showing the correlation between alpha diversity and active ingredients in EC was generated using Spearman's rank correlation coefficient.

The beta diversity of endophytic bacterial communities in EC samples of different origins was evaluated using the principal coordinate analysis (PCoA) and hierarchical clustering analysis based on the Bray–Curtis distance. The differences in community composition were tested using Adonis. Redundancy analysis (RDA) was used to reflect the relationship between active ingredients of EC and the distribution of endophytic bacterial communities. Linear discriminant analysis effect size (LEfSe) was used to screen the marker difference species in each group of samples. The correlation analysis between the endophytic bacterial community and the content of active ingredients was performed using Spearman's correlation coefficient method, and heatmaps were drawn using R (v 4.2.2).

2.6. Statistical analysis

SPSS 21.0 software was used for statistical analysis. Experimental data were expressed as mean \pm standard deviation. The ANOVA test was used if the normal distribution and homogeneity of variance were met between multiple groups; otherwise, the Kruskal–Wallis rank sum test was used. A P -value of <0.05 indicates that the difference is statistically significant.

3. Results

3.1. EC active ingredient content of different origins

The performance validation of the method was evaluated, including linearity, precision, reproducibility, stability, and recovery (Table 2). Pinoresinol diglucoside, aucubin, geniposidic

acid, geniposide, and syringaresinol diglucoside all show good linearity ($R \geq 0.999$). The five active ingredients' RSD of precision, repeatability, stability, and recovery were $\leq 3\%$. This indicates that the UPLC method was satisfactory for subsequent analysis of all EC samples in this study.

The contents of pinoresinol diglucoside, aucubin, geniposidic acid, geniposide, and syringaresinol diglucoside in EC from GZ, HUB, HUN, and SX are shown in Figure 1. The Chinese Pharmacopeia (2020 version) stipulates that the content of pinoresinol diglucoside in EC should not be $<0.10\%$. In the pinoresinol diglucoside content, the four EC origins are ranked as $SX = GZ > HUN = HUB$, the highest was 0.30% and the lowest was 0.21%, all of which met the pharmacopeia requirements. In the aucubin content, the four EC origins are ranked as $HUB > GZ > HUN > SX$, where the HUB was significantly higher than that of SX ($P < 0.05$). In the geniposidic acid content, the four EC origins are ranked as $HUB > HUN > GZ > SX$, where the HUB was significantly higher than that in GZ and SX ($P < 0.05$), reaching 2.55%. In the geniposide content, the four EC origins are ranked as $HUN > SX > GZ > HUB$. In the syringaresinol diglucoside content, the four EC origins are ranked as $SX > HUN > GZ > HUB$. These indicate different patterns of variation in the content of active ingredients among different origins.

3.2. Alpha diversity of endophytic bacteria of EC from different origins

As shown in Figure 2A, the curve for each sample flattens out when the sequenced fragment reaches 5000, and the gain of increasing the number of sequencings on the number of OTUs is no longer significant. This indicates that the current sequencing quantity is sufficient to reflect most microbial information in the samples. As shown in Figure 2B, the number of OTUs shared by the four origins was 425. Among them, the number of OTUs from HUN was the most ($n = 3,463$), followed by SX ($n = 1,897$), GZ ($n = 1,303$), and HUB ($n = 1,041$). The numbers of OTUs unique to GZ, HUB, HUN, and SX samples were 205, 148, 1,977, and 463, respectively. Therefore, the results tentatively suggest that EC endophytic bacterial richness was highest in the HUN sample.

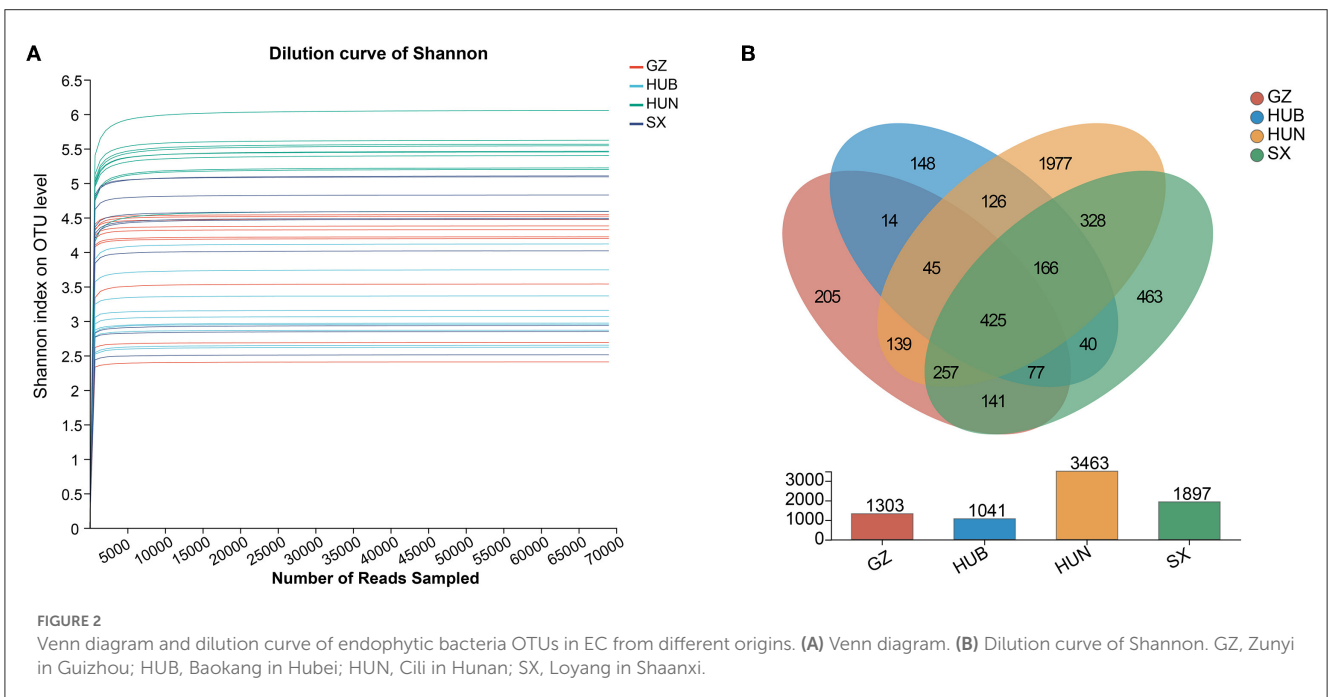
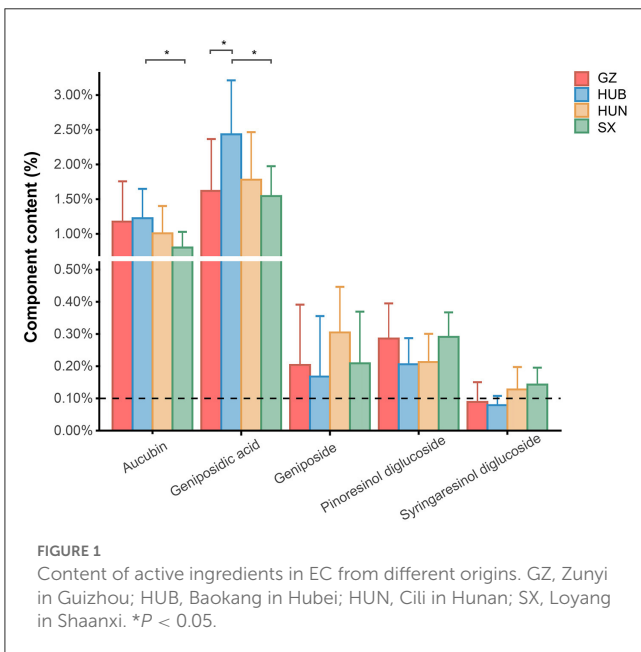
From the Chao and ACE indices in Figures 3A, B, it can be seen that the endophytic bacterial richness of EC in HUN was significantly higher than other origins ($P < 0.01$ or $p < 0.001$), SX ranked the second in richness, and HUB or GZ had the lowest richness. The Shannon index (Figure 3C) showed $HUN > SX > GZ$

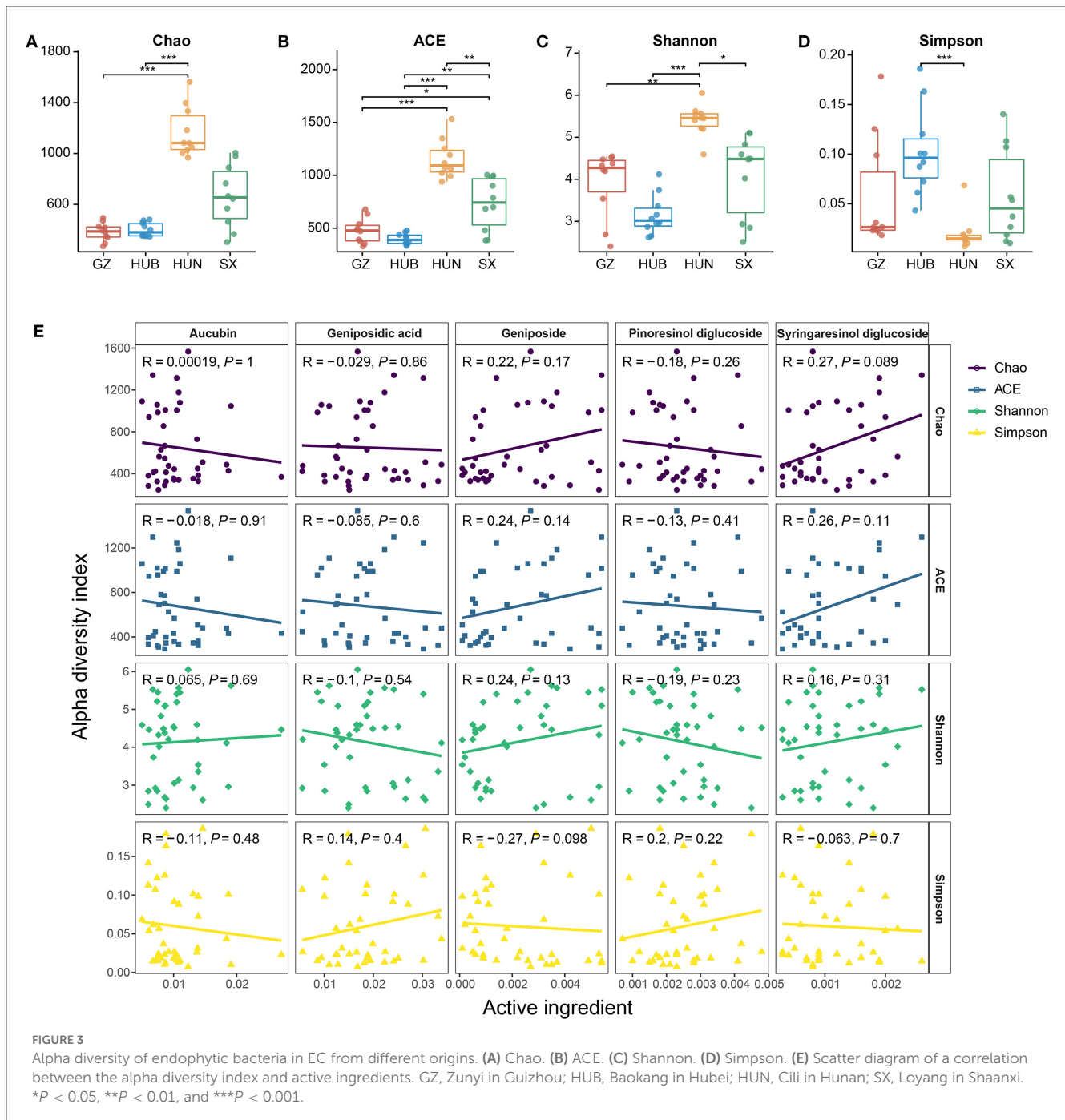
> HUB, where HUN was significantly higher than SX ($P < 0.05$), GZ ($P < 0.01$), and HUB ($P < 0.001$) samples, which was consistent with the OTU results. The Simpson index (Figure 3D) showed $HUN < GZ < SX < HUB$, where HUB was significantly higher than the HUN ($P < 0.001$). This shows that the richness and diversity of EC endophytic bacteria from HUN were the highest, while those from GZ and HUB were the lowest. The results of the correlation between the active ingredients and the alpha diversity index of EC are shown in Figure 3E (Spearman correlation coefficient). There

was no significant correlation between the five active ingredients and the four alpha diversity indices ($R^2 < 0.3, P > 0.05$).

3.3. Beta diversity of endophytic bacteria of EC from different origins

As shown in Figure 4A, the contributions of PC1 and PC2 were 32.78 and 12.90%, respectively. The samples from HUN and HUB were distributed in the third and fourth quadrants, respectively, and were significantly separated from the bacterial communities of other origins ($P < 0.01$), while GZ and SX were similarly distributed and the differences in the bacterial communities were not significant ($P > 0.05$). This indicates that the community structure of the EC endophytic bacteria from SX and GZ is more similar. Compared with other origins, the community structure of EC endophytic bacteria from HUB and HUN were different, with the most obvious difference in HUN. In the clustering analysis (Figure 4B), samples from HUN were the least distant from each other and could be well-clustered into one group. The samples from HUB also cluster well-together except for the HUB2, while the samples from GZ and SX are relatively scattered. This indicates that the intra-group variation of EC endophytic bacteria from HUN was the smallest, followed by that in HUB, and the intra-group variation of EC endophytic bacteria from SX and GZ was relatively large. According to the RDA results, the community structure of endophytic bacteria was significantly correlated with geniposidic acid, geniposide, and pinoresinol diglucoside ($P < 0.001, P < 0.01, P < 0.05$) (Table 3). The content of geniposidic acid mainly affected the EC endophytic bacterial community from HUB, the content of geniposide mainly affected the EC endophytic bacterial community from HUN, and the content of pinoresinol diglucoside mainly





affected the EC endophytic bacterial community from SX and GZ (Figure 4C).

3.4. The taxonomic composition of endophytic bacteria of EC from different origins

The endophytic bacteria of EC from these four origins were analyzed at the phylum and genus levels based on the OTU species annotation. At the phylum level (Figures 5A, B), the endophytic

bacteria of EC from the four origins consisted of Proteobacteria (50.06–65.19%), Firmicutes (9.53–23.33%), Actinobacteriota (2.68–15.77%), Bacteroidota (8.75–13.51%), and Acidobacteriota (0.13–1.15%), and low abundance taxonomic clades accounted for <1% of the total. At the genus level (Figures 5C, D), 585, 439, 957, and 684 genera were detected in samples from GZ, HUB, HUN, and SX, respectively. Among them, HUN had the largest number of genera and HUB had the least. Genera with a relative abundance percentage >1% were selected for graphical display (Figures 5C, D). At the genus level, some dominant bacteria in EC show considerable differences in abundance. For instance, the relative abundance of *Comamonas* of EC from HUB is 20.71%, while that

from HUN is only 3.02%. Similarly, the relative abundance of *Chryseobacterium* of EC from SX is 7.61%, while that from HUN is only 0.28%. In addition, the dominant bacteria of EC also vary across different origins. For example, the top three endophytic bacteria with abundance in EC from HUB are *Comamonas* (20.71%), *Cedecea* (18.08%), and *Sphingobacterium* (7.00%). On the other hand, the top three endophytic bacteria with abundance in EC from HUN are *Burkholderia-Caballeronia-Paraburkholderia* (5.92%), *Thauera* (4.64%), and *Ralstonia* (4.07%).

3.5. Endophytic bacteria with EC characteristics of different origins

A Lefse analysis was conducted to screen out characteristic endophytic bacteria in EC samples from different origins. Based on the linear discriminant analysis (LDA) with a threshold of ≥ 4 , this study obtained 48 characteristic taxa and 21 characteristic genera, as shown in Figures 6A, B. Among them, the characteristic genera from GZ were *Delftia*, *Brachymonas*, *Bradyrhizobium*, *Pseudomonas*, *Acetobacterium*, and *Pelomonas*. The characteristic genera from HUB were *Comamonas*, *Cedecea*, *Sphingobacterium*, *Paenibacillus*, *Aquabacterium*, *Klebsiella*, and *Clostridium sensu stricto 10*. The characteristic genera from HUN were *Burkholderia-Caballeronia-Paraburkholderia*, *Thauera*, *Vagococcus*, *Blautia*, and *Bacteroides*. The characteristic genera from SX were *Chryseobacterium*, *Escherichia-Shigella*, and *Brevundimonas*.

3.6. Correlation analysis of EC dominant endophytic bacteria and active ingredients

The correlation between the top 20 dominant genera and active ingredients was analyzed using the Spearman correlation coefficient method, as shown in Figure 6C. Pinorensinol diglucoside had significant positive correlations with *Delftia* ($r = 0.45$, $P < 0.01$) and *Brevundimonas* ($r = 0.32$, $P < 0.05$). Geniposidic acid had significant positive correlations with *Sphingobacterium* ($r = 0.45$, $P < 0.01$), *Cedecea* ($r = 0.35$, $P < 0.05$), *Klebsiella* ($r = 0.37$, $P < 0.05$), and *Paenibacillus* ($r = 0.32$, $P < 0.05$) and significant negative correlations with *Pseudomonas* ($r = -0.38$, $P < 0.05$), *Pelomonas* ($r = -0.38$, $P < 0.05$), *Escherichia-Shigella* ($r = -0.38$, $P < 0.05$), *Sphingomonas* ($r = -0.31$, $P < 0.05$), and *Corynebacterium* ($r = -0.32$, $P < 0.05$). Geniposide had significant positive correlations with *Thauera* ($r = 0.33$, $P < 0.05$) and *Burkholderia-Caballeronia-Paraburkholderia* ($r = 0.33$, $P < 0.05$) and a significant negative correlation with *Klebsiella* ($r = -0.37$, $P < 0.05$). Syringaresinol diglucoside had a significant positive correlation with *Massilia* ($r = 0.37$, $P < 0.05$).

4. Discussion

Plants have long been an important part of natural therapies of the world, and there have been numerous examples of natural active ingredients extracted from medicinal plants to develop novel and effective preparations (Narayanan and Glick, 2022). In *E. ulmoides*,

TABLE 3 RDA results.

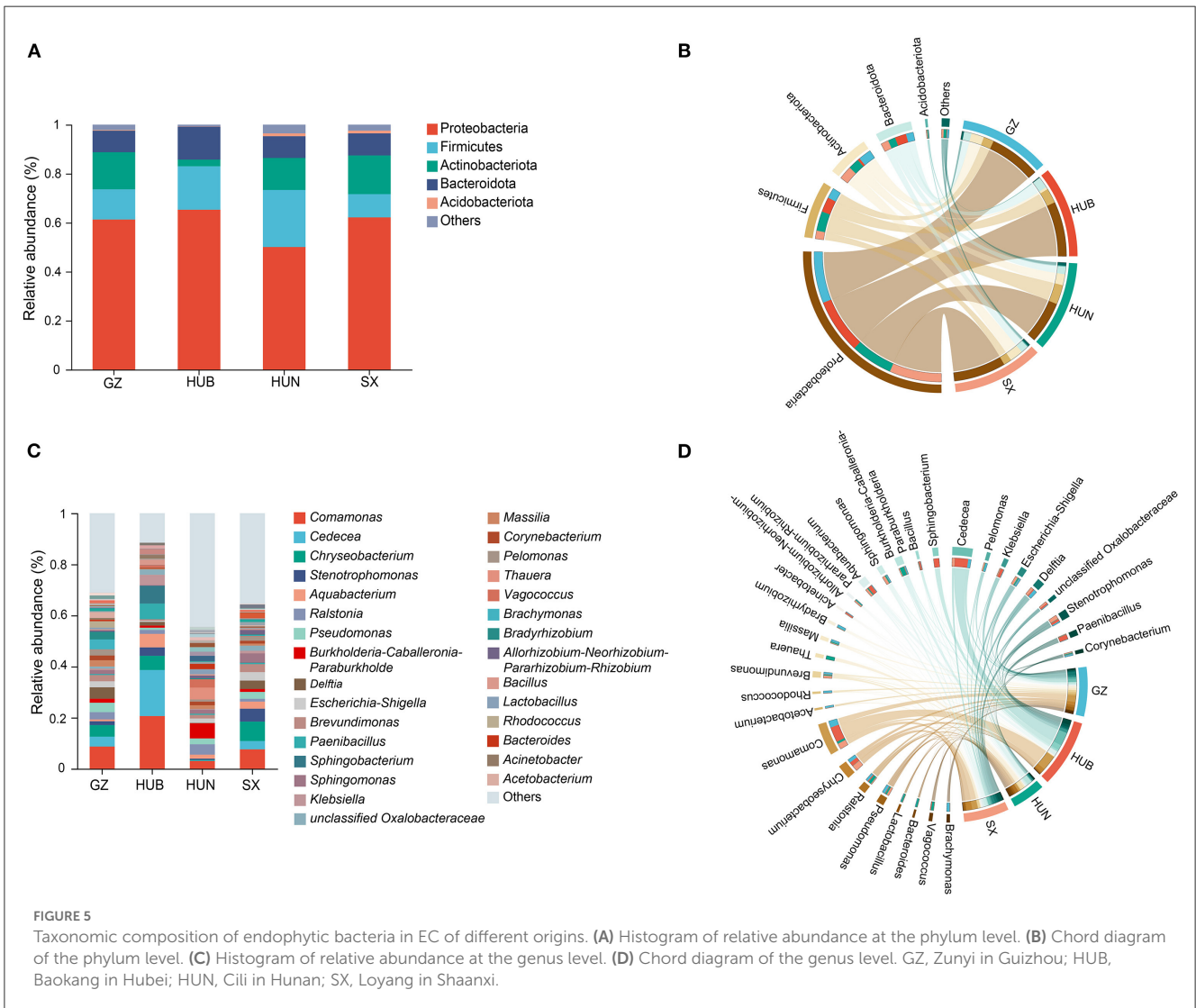
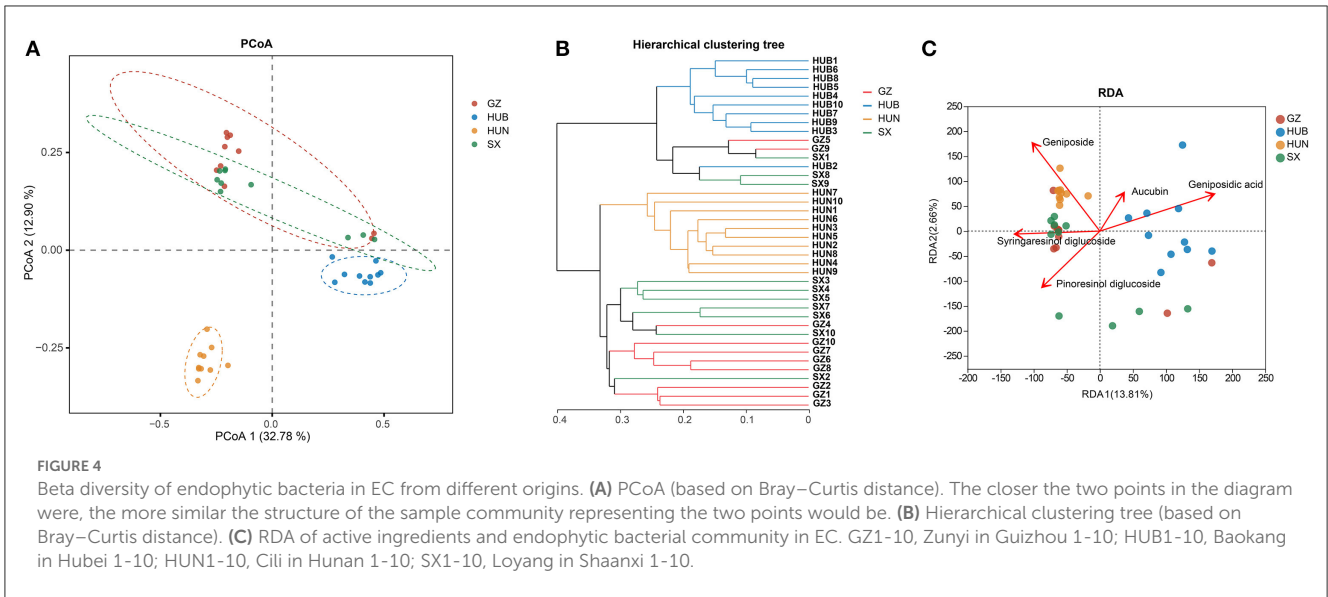
Compounds	R^2	P -values	Mark
Aucubin	0.0626	0.324	
Geniposidic acid	0.3128	0.001	***
Geniposide	0.2098	0.009	**
Pinorensinol diglucoside	0.1915	0.019	*
Syringaresinol diglucoside	0.1169	0.096	

* $P < 0.05$, ** $P < 0.01$, and *** $P < 0.001$.

as an endemic economic tree species and source of tonic herbs in China, screening endophytes associated with active ingredients from its medicinal parts is an effective way to improve the quality of medicinal materials and meet the needs of pharmaceutical and agricultural production.

High-throughput sequencing technology has unique advantages in analyzing the characteristics of microbial communities. It can obtain larger and more comprehensive information on endophytic bacteria by directly extracting total DNA in the sample environment and sequencing, which is superior to the traditional culture methods (Glenn et al., 2019; Quijada et al., 2020). In previous studies, Li et al. (2007) isolated 122 strains of endophytic bacteria in EC by culturing, including 47 strains of endophytic bacteria. Ma et al. (2021) isolated EC endophytes by plate scribing and obtained 37 strains of endophytic bacteria, of which 21 strains were identified as belonging to the genera *Acinetobacter*, *Alcaligenes*, *Staphylococcus*, and *Bacillus*. In contrast, this study employed 16S rRNA sequencing to detect a significantly higher number of 1,149 genera in EC samples from GZ, HUB, HUN, and SX origins, highlighting the previously underestimated diversity and abundance of endophytic bacteria colonized in EC.

In general, the higher the abundance and diversity of the endophytic microbiota, the higher the metabolic stability and the material communication frequency of the microbiota (Cai et al., 2021). From the diversity results of alpha and beta, it could be seen that the endophytic bacteria diversity and richness of EC from HUN were the highest, and the difference was the largest with the other three origins. However, it is worth noting that the contents of the EC active ingredients from HUN were not outstanding, and only geniposide content was higher than other origins. In contrast, although the diversity and richness of EC endophytic bacteria from HUB were relatively low, the aucubin and geniposidic acid levels were the highest among the four origins. This means that the active ingredient contents in EC may be more influenced by the structural compositions of endophytic bacteria or certain specific bacteria but have little to do with the diversity and richness of species. This was also evidenced by the results of the correlation analysis, where the diversity indexes were not significantly related to the five active ingredient contents. Furthermore, the relationship between endophytic bacteria and active ingredient contents of EC was complex, and no single genus of bacteria simultaneously promoted or inhibited the contents of five active ingredients. For example, *Klebsiella* showed a significant positive correlation with geniposidic acid content, but a significant negative correlation with geniposide content. Some members of the genus *Klebsiella* (e.g., *Klebsiella*



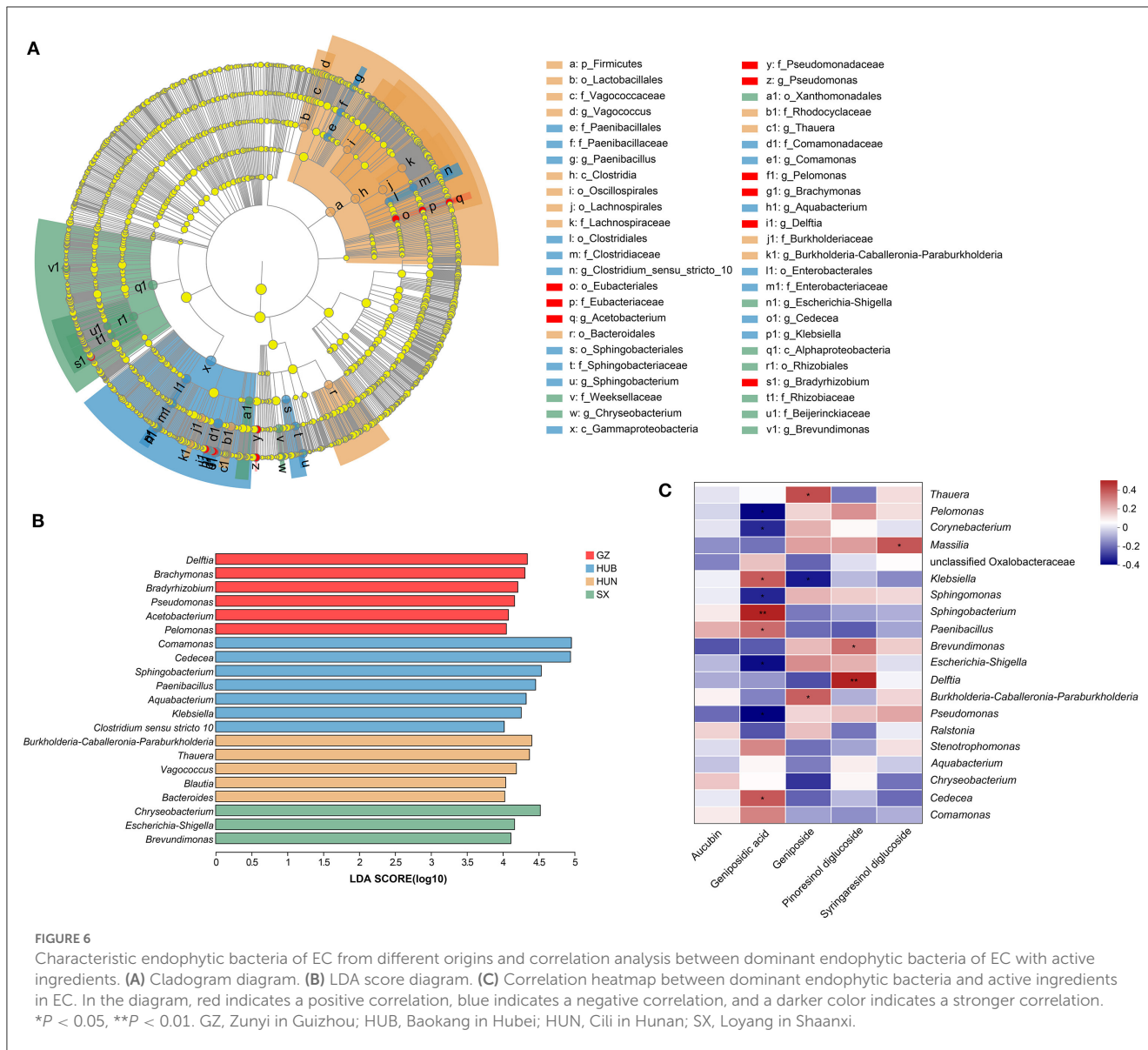


FIGURE 6 Characteristic endophytic bacteria of EC from different origins and correlation analysis between dominant endophytic bacteria of EC with active ingredients. (A) Cladogram diagram. (B) LDA score diagram. (C) Correlation heatmap between dominant endophytic bacteria and active ingredients in EC. In the diagram, red indicates a positive correlation, blue indicates a negative correlation, and a darker color indicates a stronger correlation. * $P < 0.05$, ** $P < 0.01$. GZ, Zunyi in Guizhou; HUB, Baokang in Hubei; HUN, Cili in Hunan; SX, Loyang in Shaanxi.

pneumoniae) have been reported to have the potential to convert geniposide to genipinine (Kawata et al., 1991). This suggests that there are interactions between different EC endophytic bacteria, which jointly affect the contents of active ingredients.

Endophytes have been studied for a century since De Barry introduced the term “endophytes” in 1866. However, research studies on endophytic fungi of medicinal plants have only been gaining attention in the last 30 years and even less on bacteria (Zheng et al., 2021; Anand et al., 2023). In fact, people have only a little understanding of endophytic bacteria’s role in synthesizing iridoids and lignans in *E. ulmoides*. Furthermore, the current research into the origin and isolation of EC endophytic bacteria containing active ingredient synthesis gene clusters is still in its preliminary stages (Raimi and Adeleke, 2021). At the genus level, *Comamonas* was the dominant genus for the four EC origins, with the highest relative abundance in the HUB origin (20.71%) and the lowest in the HUN (3.02%), while it was also the characteristic bacterium of the HUB. *Comamonas* is a

group of gram-negative bacteria that is abundant in a variety of environments including soil, plants, and water sources (Hem et al., 2022). Although *Comamonas* is a potentially pathogenic bacterium for humans, studies have shown the role of *Comamonas* in degrading exogenous pollutants and heavy metal contamination (Ryan et al., 2022). For instance, Wang et al. (2023) reported that the co-culture of *Comamonas* and *Enterobacter* reduced the accumulation of the heavy metal element Cd in rice. *Cedeceae* is the second most abundant genus among all samples, and together with *Sphingobacterium*, *Paenibacillus*, and *Klebsiella*, these are the characteristic bacteria in the HUB group. These characteristic bacteria are significantly positively correlated with geniposidic acid. *Cedeceae* has been found in the endophytic bacteria of medicinal plants such as *Rosmarinus officinalis* and *Aloe vera* (Akinsanya et al., 2015; Sharma et al., 2021; Ryan et al., 2022; Wang et al., 2023), but most reports on *Cedeceae* have focused on its clinical pathogenicity (Ramaswamy et al., 2019; Thompson and Sharkady, 2021). *Sphingobacterium* is a gram-negative bacterium with wide

distribution and strong stress resistance, and rarely causes human infection (Cai et al., 2020). *Paenibacillus* is the potential source of action for various antibacterial substances, and the chitinase and crystal protein secreted by it can effectively kill the larvae of beetle pests (Lorentz et al., 2006; Sharma et al., 2013; Grady et al., 2016). In addition, *Paenibacillus* plays an important role in promoting plant growth by facilitating phosphorus uptake, producing auxin, and inducing systemic resistance to pathogenic bacteria (Patten et al., 2013; Grady et al., 2016). Weak pathogenicity and positive effects on plant growth can be considered as one of the screening criteria for strains. Therefore, *Paenibacillus* associated with the EC active ingredient content can be used as the characteristic bacterium from HUB for subsequent screening and verification. The same was true for the characteristic bacterium *Delftia* in GZ, which had a significant positive correlation with pinoresinol diglucoside. Previous studies have shown that *Delftia* has a good application prospect in promoting plant growth and bioremediation (Bhat et al., 2022). Some of its members can be used to reduce the accumulation of Cd elements, agricultural inoculants, or bioremediation agents (Bhat et al., 2022; Lo et al., 2022). In addition, there are other dominant endophytic bacteria including *Thauera*, *Massilia*, and *Sphingomonas* that have significant correlations with EC active ingredients. They have roles such as degrading aromatic compounds (Yang E. D. et al., 2019), producing polymers (Asaf et al., 2020), or secreting plant growth hormones (Liu et al., 2019).

This study provided initial insights into the relationships between EC endophytic bacteria of varying origins and active ingredients. Nevertheless, there are certain limitations that should be acknowledged, such as the limited sample size and analysis on the dominant genera only, which may cause the omission of some crucial endophytic bacteria.

5. Conclusion

This study demonstrates that the endophytic bacterial community of EC exhibits a diverse species composition, with significant differences observed among bacterial taxa from different origins. Meanwhile, certain endophytic bacterial genera, such as *Comamonas*, *Sphingobacterium*, and *Klebsiella*, are closely associated with the main active ingredients of EC. However, the mechanisms by which these endophytic bacteria influence the production of effective ingredients of EC remain largely unknown and warrant further research.

Data availability statement

The datasets presented in this study can be found in online repositories. The names of the repository/repositories and accession number(s) can be found below: <https://www.ncbi.nlm.nih.gov/>, PRJNA933400.

Author contributions

XL maintained and performed studies, wrote the manuscript, and revised the manuscript. DW and PL were mainly responsible for the determination of the active ingredients in the Eucommiae cortex and provided funding sources. KZ, JL, and XY reviewed the manuscript and participated in the analysis of the data. YP managed and coordinated the research activity planning and execution and provided financial support for the project leading to this publication. All authors contributed to the article, decided to submit the manuscript for publication, and approved the submitted version.

Funding

This research was financially supported by the National Natural Science Foundation of China (No. 81903746), the Natural Science Foundation of Hunan Province (No. 2020JJ5326), the Hunan Province Key R&D Project (No. 2021SK2012), the Hunan Provincial Market Supervision Administration Provincial Bureau Science and Technology Plan Project (No. 2022KJH37), the General items of local food safety standards in Hunan Province in 2021 [No. Xiangwei Food Department Memo [2021] No. 35], and the Huang Boliang National Famous and Old Chinese Medicine Expert Inheritance Studio Construction Project [Chinese Medicine People's Education Letter [2019] No. 41].

Acknowledgments

We would like to show sincere thanks to everyone who contributed to this research.

Conflict of interest

The authors declare that the research was conducted in the absence of any commercial or financial relationships that could be construed as a potential conflict of interest.

Publisher's note

All claims expressed in this article are solely those of the authors and do not necessarily represent those of their affiliated organizations, or those of the publisher, the editors and the reviewers. Any product that may be evaluated in this article, or claim that may be made by its manufacturer, is not guaranteed or endorsed by the publisher.

References

- Akinsanya, M. A., Goh, J. K., Lim, S. P., and Ting, A. S. (2015). Diversity, antimicrobial and antioxidant activities of culturable bacterial endophyte communities in Aloe vera. *FEMS Microbiol. Lett.* 362, fnv184. doi: 10.1093/femsle/fnv184
- Anand, U., Pal, T., Yadav, N., Singh, V. K., Tripathi, V., Choudhary, K. K., et al. (2023). Current scenario and future prospects of endophytic microbes: promising candidates for abiotic and biotic stress management for agricultural and environmental sustainability. *Microb. Ecol.* doi: 10.1007/s00248-023-02190-1
- Asaf, S., Numan, M., Khan, A. L., and Al-Harrasi, A. (2020). Sphingomonas: from diversity and genomics to functional role in environmental remediation and plant growth. *Crit. Rev. Biotechnol.* 40, 138–152. doi: 10.1080/07388551.2019.1709793
- Bhat, S. V., Maughan, H., Cameron, A. D. S., and Yost, C. K., (2022). Phylogenomic analysis of the genus *Delftia* reveals distinct major lineages with ecological specializations. *Microb. Genom.* 8, mgen000864. doi: 10.1099/mgen.0.000864
- Cai, P., Liu, C. Y., Liang, X. J., Xiao, J., Wang, D., Zhang, S. H., et al. (2014). Grey correlation degree analysis between active ingredients in barks or leaves of *Eucommia* cortex and environmental factors in their habitats. *Chin. J. Exp. Tradit. Med. Formulae* 20, 10–14. doi: 10.13422/j.cnki.syfx.2014230010
- Cai, X. H., Wang, R. Y., Hu, S. N., Li, Y., and Zhou, W. (2020). Research progress of *Sphingobacterium*. *Genomics Appl. Biol.* 39, 2096–2102. doi: 10.13417/j.gab.039.002096
- Cai, Y., Liu, H., Kong, W. P., Zhong, C., Xie, J., W., Y. Q., et al. (2021). Study on community and diversity of endophyte and its correlation with active ingredient content in *Polygonatum cyrtoneuma*. *Chin. Tradit. Herb Drugs* 52, 4023–4030. doi: 10.7501/j.issn.0253-2670.2021.13.025
- Caporaso, J. G., Kuczynski, J., Stombaugh, J., Bittinger, K., Bushman, F. D., Costello, E. K., et al. (2010). QIIME allows analysis of high-throughput community sequencing data. *Nat. Methods* 7, 335–336. doi: 10.1038/nmeth.f.303
- Feng, H., Fan, J., Song, Z., Du, X., Chen, Y., Wang, J., et al. (2016). Characterization and immunoenhancement activities of *Eucommia ulmoides* polysaccharides. *Carbohydr. Polym.* 136, 803–811. doi: 10.1016/j.carbpol.2015.09.079
- Glenn, T. C., Pierson, T. W., Bayona-Vásquez, N. J., Kieran, T. J., Hoffberg, S. L., Thomas IV, J. C., et al. (2019). Adapterama II: universal amplicon sequencing on Illumina platforms (TaggiMatrix). *Peer J.* 7, e7786. doi: 10.7717/peerj.7786
- Grady, E. N., MacDonald, J., Liu, L., Richman, A., and Yuan, Z. C. (2016). Current knowledge and perspectives of *Paenibacillus*: a review. *Microb. Cell Fact.* 15, 203. doi: 10.1186/s12934-016-0603-7
- Ha, H., Ho, J., Shin, S., Kim, H., Koo, S., Kim, I. H., et al. (2003). Effects of *Eucommia* cortex on osteoblast-like cell proliferation and osteoclast inhibition. *Arch. Pharm. Res.* 26, 929–936. doi: 10.1007/BF02980202
- He, X., Wang, J., Li, M., Hao, D., Yang, Y., Zhang, C., et al. (2014). *Eucommia ulmoides* Oliv.: ethnopharmacology, phytochemistry and pharmacology of an important traditional Chinese medicine. *J. Ethnopharmacol.* 151, 78–92. doi: 10.1016/j.jep.2013.11.023
- Hem, S., Wyrusch, E. R., Drigo, B., Baker, D. J., Charles, I. G., Donner, E., et al. (2022). Genomic analysis of carbapenem-resistant *Comamonas* in water matrices: implications for public health and wastewater treatments. *Appl. Environ. Microbiol.* 12, 88.e0064622. doi: 10.1128/aem.00646-22
- Huang, L. C., Lyu, Q., Zheng, W. Y., Yang, Q., and Cao, G. (2021). Traditional application and modern pharmacological research of *Eucommia ulmoides* Oliv. *Chin. Med.* 16, 73. doi: 10.1186/s13020-021-00482-7
- Hussain, T., Tan, B., Liu, G., Oladele, O. A., Rahu, N., Tossou, M. C., et al. (2016). Health-promoting properties of *Eucommia ulmoides*: a review. *Evid. Based Complement. Alternat. Med.* 2016, 5202908. doi: 10.1155/2016/5202908
- Ishimitsu, A., Tojo, A., Satonaka, H., and Ishimitsu, T. (2021). *Eucommia ulmoides* (Tochu) and its extract geniposidic acid reduced blood pressure and improved renal hemodynamics. *Biomed. Pharmacother.* 141, 111901. doi: 10.1016/j.biopha.2021.111901
- Kawata, Y., Hattori, M., Akao, T., Kobashi, K., and Namba, T. (1991). Formation of nitrogen-containing metabolites from geniposide and gardenoside by human intestinal bacteria. *Planta Med.* 57, 536–542. doi: 10.1055/s-2006-960201
- Köberl, M., Schmidt, R., Ramadan, E. M., Bauer, R., and Berg, G. (2013). The microbiome of medicinal plants: diversity and importance for plant growth, quality and health. *Front. Microbiol.* 4, 400. doi: 10.3389/fmicb.2013.00400
- Li, A. H., Fan, M. T., and Shi, J. L. (2007). Isolation of endophytes from *Eucommia ulmoides* Oliv. and screening for strains with PDG production. *Xibei. Zhiwu. Xuebao* 2007, 616–619. doi: 10.3321/j.issn:1000-4025.2007.03.034
- Liang, X. J., Zhang, S. H., Zhang, P., Peng, F., Ke, J., Mi, Y. N., et al. (2014). Comparative study on distribution of endophytic fungi in *Eucommia* barks from different habitats. *Zhongguo Zhong Yao Za Zhi* 39, 204–208. doi: 10.4268/cjcm20140209
- Liu, C., Shi, J. L., Zhou, X. J., Yang, B. W., and Dou, X. X. (2011). Isolation, identification and growth conditions of endophytic fungi of *Eucommia ulmoides* Oliv. for production of PDG. *J. Northwest AandF Univ.* 39, 203–209. doi: 10.13207/j.cnki.jnwafu.2011.01.022
- Liu, T. H., Zhang, X. M., Tian, S. Z., Chen, L. G., and Yuan, J. L. (2020). Bioinformatics analysis of endophytic bacteria related to berberine in the Chinese medicinal plant *Coptis teeta* Wall. *Biotech.* 10, 96. doi: 10.1007/s13205-020-2084-y
- Liu, Y., Morelli, M., Koskimäki, J. J., Qin, S., Zhu, Y. H., Zhang, X. X., et al. (2022). Editorial: role of endophytic bacteria in improving plant stress resistance. *Front. Plant Sci.* 13, 1106701. doi: 10.3389/fpls.2022.1106701
- Liu, Y. L., Peng, O., Tie, B. Q., Liu, Y. T., Luo, H. T., Li, D. Y., et al. (2019). Effects of *Delftia* sp. B9 on rice seed germination and cadmium accumulation in rice seedlings under Cd stress. *J. Agro-Environ. Sci.* 38, 1855–1863. doi: 10.11654/jaes.2019-0261
- Liu, Y. X., Qin, Y., Chen, T., Lu, M., Qian, X., Guo, X., et al. (2021). A practical guide to amplicon and metagenomic analysis of microbiome data. *Protein Cell* 12, 315–330. doi: 10.1007/s13238-020-00724-8
- Lo, H. Y., Martínez-Lavanchy, P. M., Goris, T., Heider, J., Boll, M., Kaster, A. K., et al. (2022). IncP-type plasmids carrying genes for antibiotic resistance or for aromatic compound degradation are prevalent in sequenced *Aromatoleum* and *Thaera* strains. *Environ. Microbiol.* 24, 6411–6425. doi: 10.1111/1462-2920.16262
- Lorentz, R. H., Artico, S., da Silveira, A. B., Einsfeld, A., and Corção, G. (2006). Evaluation of antimicrobial activity in *Paenibacillus* spp. strains isolated from natural environment. *Letts. Appl. Microbiol.* 43, 541–547. doi: 10.1111/j.1472-765X.2006.01995.x
- Ma, Y. Y., Zhao, J., Yuan, W. J., Zhang, W. R., and Li, Q. (2021). Isolation and identification of endophytes bacteria from *Eucommia ulmoides* and their activity detection. *Shih-chen Kuo I Kuo Yao* 32, 1229–1232. doi: 10.3969/j.issn.1008-0805.2021.05.61
- Narayanan, Z., and Glick, B. R. (2022). Secondary metabolites produced by plant growth-promoting bacterial endophytes. *Microorganisms* 10, 2008. doi: 10.3390/microorganisms10102008
- Pathak, P., Rai, V. K., Can, H., Singh, S. K., Kumar, D., Bhardwaj, N., et al. (2022). Plant-endophyte interaction during biotic stress management. *Plants* 11, 2203. doi: 10.3390/plants11172203
- Patten, C. L., Blakney, A. J., and Coulson, T. J. (2013). Activity, distribution and function of indole-3-acetic acid biosynthetic pathways in bacteria. *Crit. Rev. Microbiol.* 39, 395–415. doi: 10.3109/1040841X.2012.716819
- Quijada, N. M., Hernández, M., and Rodríguez-Lázaro, D. (2020). High-throughput sequencing and food microbiology. *Adv. Food Nutr. Res.* 91, 275–300. doi: 10.1016/bs.afnr.2019.10.003
- Raimi, A., and Adeleke, R. (2021). Bioprospecting of endophytic microorganisms for bioactive compounds of therapeutic importance. *Arch. Microbiol.* 203, 1917–1942. doi: 10.1007/s00203-021-02256-z
- Ramaswamy, V. V., Gummadapu, S., and Suryanarayana, N. (2019). Nosocomial pneumonia and sepsis caused by a rare organism *Cedecea lapagei* in an infant and a review of literature. *BMJ Case Rep.* 12, e229854. doi: 10.1136/bcr-2019-229854
- Rustamova, N., Wubulikasimu, A., Mukhamedov, N., Gao, Y., Egamberdieva, D., Yili, A., et al. (2020). Endophytic bacteria associated with medicinal plant *vernonia anthelmintica*: diversity and characterization. *Curr. Microbiol.* 77, 1457–1465. doi: 10.1007/s00284-020-01924-5
- Ryan, M. P., Sevjahova, L., Gorman, R., and White, S. (2022). The emergence of the genus *Comamonas* as important opportunistic pathogens. *Pathogens* 11, 1032. doi: 10.3390/pathogens11091032
- Schloss, P. D., Westcott, S. L., Ryabin, T., Hall, J. R., Hartmann, M., Hollister, E. B., et al. (2009). Introducing mothur: open-source, platform-independent, community-supported software for describing and comparing microbial communities. *Appl. Environ. Microbiol.* 75, 7537–7541. doi: 10.1128/AEM.01541-09
- Sharma, A., Thakur, D. R., and Kanwar, S. (2013). Chandlaet Vk. diversity of entomopathogenic bacteria associated with the white grub, *Brahmina coriacea*. *J. Pest Sci.* 86, 261–273. doi: 10.1007/s10340-012-0459-5
- Sharma, M., Sood, G., and Chauhan, A. (2021). Bioprospecting beneficial endophytic bacterial communities associated with *Rosmarinus officinalis* for sustaining plant health and productivity. *World J. Microbiol. Biotechnol.* 37, 135. doi: 10.1007/s11274-021-03101-7
- Shi, J. L., Liu, C., Liu, L. P., Yang, B. W., and Zhang, Y. Z. (2012). Structure identification and fermentation characteristics of pinosresinol diglucoside produced by *Phomopsis* sp. isolated from *Eucommia ulmoides* Oliv. *Appl. Microbiol. Biotechnol.* 93, 1475–1483. doi: 10.1007/s00253-011-3613-8

- Song, X., Wu, H., Yin, Z., Lian, M., and Yin, C. (2017). Endophytic bacteria isolated from *Panax ginseng* improves ginsenoside accumulation in adventitious ginseng root culture. *Molecules* 22, 837. doi: 10.3390/molecules22060837
- Thompson, D. K., and Sharkady, S. M. (2021). Genomic insights into drug resistance determinants in *Cedecea neteri*, a rare opportunistic pathogen. *Microorganisms* 9, 1741. doi: 10.3390/microorganisms9081741
- Wang, F., Men, X., Zhang, G., Liang, K. C., Xin, Y. H., Wang, J., et al. (2018). Assessment of 16S rRNA gene primers for studying bacterial community structure and function of aging flue-cured tobaccos. *AMB Express* 8, 1–9. doi: 10.1186/s13568-018-0713-1
- Wang, X., Xu, Q., Hu, K., Wang, G., and Shi, K. (2023). A coculture of *Enterobacter* and *Comamonas* reduces Cd accumulation in rice. *Mol. Plant Microbe Interact.* 36, 95–108. doi: 10.1094/MPMI-09-22-0186-R
- Yan, Y., Zhao, H., Zou, L. S., Liu, X. H., Chai, C., Wang, S. N., et al. (2017). Difference of chemical constituents in *Eucommia* Cortex from different habitats by LC-QTOF MS/MS. *Zhongguo Zhong Yao Za Zhi* 42, 2730–2737. doi: 10.19540/j.cnki.cjcm.20170419.004
- Yang, E. D., Cui, D. X., and Wang, W. Y. (2019). Research progress on the genus *Massilia*. *Microbiol. China* 46, 1537–1548. doi: 10.13344/j.microbiol.china.180573
- Yang, J., Dong, C. B., Chen, W. H., Liang, J. D., Han, Y. F., Liang, Z. Q., et al. (2019). Community composition and ecological functional structural analysis of endophytic fungi in bark of *Eucommia ulmoides* in different areas. *Zhongguo Zhong Yao Za Zhi* 44, 1126–1134. doi: 10.19540/j.cnki.cjcm.20181226.005
- Zeng, X., Guo, F., and Ouyang, D. (2020). A review of the pharmacology and toxicology of aucubin. *Fitoterapia* 140, 104443. doi: 10.1016/j.fitote.2019.104443
- Zhao, J., Wu, C. H., and Zhang, W. R. (2016). Research progress of endophytic bacteria of *Eucommia ulmoides* Oliv. *Shih-chen Kuo I Kuo Yao* 27, 1204–1205. doi: 10.3969/j.issn.1008-0805.2016.05.072
- Zheng, R. H., Li, S. J., Zhang, X., and Zhao, C. Q. (2021). Biological activities of some new secondary metabolites isolated from endophytic fungi: a review study. *Int. J. Mol. Sci.* 22, 959. doi: 10.3390/ijms22020959
- Zhong, L., Niu, B., Tang, L., Chen, F., Zhao, G., Zhao, J., et al. (2016). Effects of polysaccharide elicitors from endophytic *Fusarium oxysporum* fat9 on the growth, flavonoid accumulation and antioxidant property of fagopyrum tataricum sprout cultures. *Molecules* 21, 1590. doi: 10.3390/molecules21121590