



Genomic Characterization of *mcr-1*-Carrying Foodborne *Salmonella enterica* serovar Typhimurium and Identification of a Transferable Plasmid Carrying *mcr-1*, *bla*_{CTX-M-14}, *qnrS2*, and *oqxAB* Genes From Ready-to-Eat Pork Product in China

OPEN ACCESS

Edited by:

Olivier Barraud,
INSERM U1092 Anti-Infectieux
supports moléculaires des résistances
et innovations thérapeutiques, France

Reviewed by:

Simon Le Hello,
Université de Caen
Normandie, France
Keri N. Norman,
Texas A&M University, United States

*Correspondence:

Hecheng Meng
femenghc@scut.edu.cn

Specialty section:

This article was submitted to
Antimicrobials, Resistance and
Chemotherapy,
a section of the journal
Frontiers in Microbiology

Received: 24 March 2022

Accepted: 17 May 2022

Published: 29 June 2022

Citation:

Li L, Wan X, Olsen RH, Xiao J,
Wang C, Xu X, Meng H and Shi L
(2022) Genomic Characterization of
mcr-1-Carrying Foodborne *Salmonella*
enterica serovar Typhimurium and
Identification of a Transferable Plasmid
Carrying *mcr-1*, *bla*_{CTX-M-14}, *qnrS2*,
and *oqxAB* Genes From Ready-to-Eat
Pork Product in China.
Front. Microbiol. 13:903268.
doi: 10.3389/fmicb.2022.903268

Lili Li^{1,2}, Xiulin Wan¹, Rikke Heidemann Olsen³, Jian Xiao⁴, Chong Wang⁵, Xuebin Xu⁶,
Hecheng Meng^{2*} and Lei Shi¹

¹ Institute of Food Safety and Nutrition, Jinan University, Guangzhou, China, ² School of Food Science and Engineering, South China University of Technology, Guangzhou, China, ³ Department of Veterinary and Animal Sciences, Faculty of Health and Medical Sciences, University of Copenhagen, Copenhagen, Denmark, ⁴ Guangzhou Food Inspection Institute, Guangzhou, China, ⁵ Shandong New Hope Liuhe Group Ltd., Qingdao, China, ⁶ Department of Etiological Microbiology Laboratory, Shanghai Municipal Center for Disease Control and Prevention, Shanghai, China

Salmonella enterica resistant to colistin, third-generation cephalosporins (3GCs), and fluoroquinolones (FQs) has been deemed a high-priority pathogen by the World Health Organization (WHO). The objective of this study was to characterize 11 *mcr-1*-harboring *Salmonella enterica* serovar Typhimurium isolates from raw pork and ready-to-eat (RTE) pork products in Guangzhou, China. All isolates were multi-drug resistant and contained 6–24 antibiotic-resistant genes. The *mcr-1* gene was localized in the most conserved structure (*mcr-1-orf*) in eight isolates and in mobile structure (*ISApI1-mcr-1-orf*) in three isolates. One raw pork isolate SH16SF0850, co-harbored *mcr-1*, *bla*_{CTX-M-14}, and *oqxAB* genes. One isolate 17Sal008 carried *mcr-1*, *bla*_{CTX-M-14}, *qnrS2*, and *oqxAB* genes located on a 298,622 bp IncHI2 plasmid pSal008, which was obtained from an RTE pork product for the first time. The pSal008 was closely related to a plasmid in an *S. typhimurium* isolate from a 1-year-old diarrheal outpatient in China and was found to be transferable to *Escherichia coli* J53 by conjugation. Genome sequence comparisons by core-genome Multi Locus Sequence Typing (cgMLST) based on all *S. typhimurium* isolates from China inferred highly probably epidemiological links between selected pork isolates and no possible epidemiologically links between RTE pork isolate 17Sal008 and other isolates. Our findings indicate that raw pork and pork products are potential reservoirs of *mcr-1*-harboring *S. typhimurium* and highlight the necessity for continuous monitoring of colistin, 3GCs, and FQs resistant *S. typhimurium* from different origins.

Keywords: *S. typhimurium*, *mcr-1*, ESBLs, FQs, ready-to-eat pork product

INTRODUCTION

Strains of *Salmonella enterica* are a common concern in food safety, as they are the leading cause of global bacterial food poisoning outbreaks (Kirk et al., 2015). In 2017, the global estimate of non-typhoidal *salmonella* invasive disease cases reached 535,000 (GBD 2017 Non-Typhoidal *Salmonella* Invasive Disease Collaborators, 2019). In China, non-typhoidal *Salmonella* serovars are collectively the second most prevalent bacterial agents in cases of acute diarrhea, accounting for 25.1% of 59,384 cases, according to an epidemic study based on a national surveillance network for patients with acute diarrhea from 2009 to 2018 Wang et al. (2021).

Salmonella enterica serovar Typhimurium is one of the most frequently identified serovars among foodborne illnesses, livestock, and retail meat (particularly pork) (Zhang et al., 2014, 2016; Lu et al., 2019; Wu et al., 2021). The relevance of *S. typhimurium* is also marked by its capability to acquire resistance determinants to various drug classes, especially those of critical antibiotics, such as colistin, third-generation cephalosporins (3GCs), and fluoroquinolones (FQs), which may lead to clinical treatment failure (Yi et al., 2017; Lu et al., 2019).

The plasmid-encoded polymyxin resistance gene, *mcr-1*, was originally detected in *Enterobacteriaceae* from the environment, animals, and humans in China (Liu et al., 2016). Since then, this gene has been increasingly reported in *Escherichia coli*, *Klebsiella pneumoniae*, and *Salmonella* species (Castanheira et al., 2016; Falgenhauer et al., 2016; Quan et al., 2017; Lu et al., 2019). The *mcr-1* gene carrying *S. typhimurium* has been reported in humans, food-producing animals and their surrounding environment, raw meat samples in many countries, and ready-to-eat (RTE) meat products in China (Yang et al., 2016; Litrup et al., 2017; Saavedra et al., 2017; Yi et al., 2017; Carfora et al., 2018; Wang et al., 2018; Rau et al., 2020; Moon et al., 2021). Some of these reported strains were observed to also carry plasmid-mediated FQs resistance genes or extended-spectrum beta-lactamases (ESBLs). However, the co-occurrence frequency of plasmid-mediated *mcr-1*, ESBLs, and FQs genes in *S. typhimurium* remains very low, having only been sporadically reported in retail pork samples (Hu et al., 2019) and human isolates (Lu et al., 2019; Luo et al., 2020), and has not previously been reported from RTE food product sources. The emergence and co-transfer of plasmid-mediated *mcr-1*, ESBLs, and FQs genes among foodborne *Salmonella* might compromise the effectiveness of current antimicrobial strategies, which constitute a serious public risk for humans (Falgenhauer et al., 2016).

Pork consumption has been reported as a likely source of contamination for humans to acquire *mcr-1*, ESBLs, and FQs genes carrying *S. typhimurium* strains (Lu et al., 2019). In this study, we characterized 11 *mcr-1*-carrying *S. typhimurium* isolates from raw pork and RTE pork products and tracked their source to gain insight into their public health impact.

MATERIALS AND METHODS

Strains Isolation and Identification

During our routine surveillance of foodborne pathogens from various food products during 2016–2017 in Guangdong, China,

11 *S. typhimurium* isolates resistant to colistin and carrying the *mcr-1* gene were recovered. One of the isolates (named GSJ/2017-Sal.-008, hereafter 17Sal008) was isolated from a retail RTE dumpling with pork and cabbage stuffing in Guangzhou in 2017, while the remaining 10 isolates were collected from raw pork products from retail markets in Guangzhou and Heyuan city in 2016 (Supplementary Table 1). The isolates were identified by biochemical confirmation using API 20E test identification test strips (bioMérieux, France), as well as amplification of the *invA* gene by PCR (Bai et al., 2016). The serotype was determined by the slide agglutination test, using *Salmonella* antisera (SSI Diagnostica, Denmark) according to the White-Kauffmann-Le Minor scheme.

The isolates were routinely grown in Luria-Bertani (LB; Guangdong Huankai Microbial Sci & Tech, Guangzhou, China) broth or on LB agar plates at 37°C for 12–24 h.

Antibiotic Susceptibility Testing

The susceptibility of the *Salmonella* isolates to a panel of antimicrobial drugs (Hangzhou Microbial Reagent Co., Ltd., China), such as amikacin, ampicillin, ampicillin-sulbactam sodium, amoxicillin clavulanic acid, aztreonam, ciprofloxacin, cefazolin (1st generation), cefoxitin (2nd generation), cefuroxime (2nd generation), cefotaxime (3rd generation) and ceftazidime (3rd generation), cefepime (4th generation), chloramphenicol, doxycycline, ertapenem, fosfomicin, gentamicin, imipenem, meropenem, nalidixic acid, netilmicin, peracillin, tetracycline, trimethoprim/sulfamethoxazole, tigecycline, and tobramycin, was determined by disk diffusion antibiotic susceptibility testing (CLSI, 2017). Minimal inhibitory concentrations (MICs) to polymyxin B/colistin, ciprofloxacin, and cefotaxime (Sigma-Aldrich, St. Louis, MO) were determined by broth microdilution (CLSI, 2017). Results were interpreted according to the CLSI breakpoints; i.e., *Salmonella* isolates with MICs of colistin $\leq 2 \mu\text{g/ml}$ were categorized as susceptible, and those with MICs $\geq 4 \mu\text{g/ml}$ were recorded as resistant. For cefotaxime, isolates with MICs of $\leq 1 \mu\text{g/ml}$ were considered susceptible, and those with MICs $\geq 4 \mu\text{g/ml}$ were categorized as resistant. For ciprofloxacin, isolates with MICs $\leq 0.06 \mu\text{g/ml}$ were considered susceptible, while those with MICs of $\geq 1 \mu\text{g/ml}$ were considered resistant. A tentative ESBL production phenotype was confirmed by a double-disk test comparing the zone diameters between ceftazidime (30 μg) and cefotaxime-clavulanic acid (30/10 μg) disks and between cefotaxime (30 μg) and ceftazidime-clavulanic acid (30/10 μg) disks (CLSI, 2017). The reference strain *E. coli* ATCC 25922 served as quality control.

Whole-Genome Sequencing and Annotation

The genomic DNA of the isolates was extracted using a commercial DNA extraction kit (Magen, Guangzhou, China) following the manufacturer's recommendations. The whole genome of each isolate was sequenced on Illumina HiSeq×10 with 150 bp paired-end reads (MajorBio Co., Shanghai, China). Illumina sequencing generated at least 368x sequence coverage depth which was sufficient to allow further analysis

(Supplementary Table 2). The genome of 17Sal008 was further sequenced on MinION (Oxford Nanopore, Oxford, United Kingdom). For the MinION platform, the library was prepared using the ONT 1D ligation sequencing kit (SQK-LSK109) with the native barcoding expansion kit (EXP-NBD104). The genome was assembled using a combination of short- and long-reads by SPAdes V3.14.0 (Bankevich et al., 2012) and Unicycler hybrid assembler V0.4.8 (Wick et al., 2017), and annotated by Prokka V1.14.6 (Seemann, 2014).

Clonal analysis was assessed by MLST 2.0 (<http://mlst.warwick.ac.uk/mlst/dbs/Senterica>). The presence of acquired antibiotic resistance genes and mutations in the quinolone resistance-determining regions (*gyrA*, *gyrB*, *parC*, and *parE*) was assessed by ResFinder V4.1 (Zankari et al., 2012), and was further determined by BLASTn (<http://blast.ncbi.nlm.nih.gov/Blast.cgi>). The plasmid was predicted by PlasmidFinder V2.0.1 (Carattoli et al., 2014). The plasmid of 17Sal008 was compared with the most closely related plasmids using BLASTn (<http://blast.ncbi.nlm.nih.gov/Blast.cgi>) and BLAST Ring Image Generator (BRIG) (Alikhan et al., 2011).

Phylogenetic Analysis of the Genomic Sequences

To assess the relatedness of foodborne *S. typhimurium* isolates recovered in this study with other *S. typhimurium* strains from different sources in China, we retrieved all 83 genome sequences of *S. typhimurium* that have been released from Enterobase databases and performed core-genome Multi Locus Sequence Typing (cgMLST) (cgMLST scheme available on Enterobase, <https://enterobase.warwick.ac.uk>, accessed on 9 March 2022). Similar but non-identical strains [strains showing different core genome Sequence Types (cgST)] were identified in Enterobase by using the hierarchical clustering method (HierCC) that allows for grouping of strains into hierarchical clusters (HCs) that can differ up to a specified and fixed number of cgMLST alleles. This number is indicated by the suffix following “HC” (e.g., HC5 for 5 cgMLST allelic differences). Isolates belonging to the same HC10 cluster were considered a possible epidemiologically linked, and isolates belonging to the same HC5 cluster were considered highly probably epidemiological linked (Bonifait et al., 2021).

To assess the genetic relationship between strains, a minimum-spanning tree was created from cgMLST allelic differences in Enterobase using GrapeTree with the RapidNJ algorithm (Zhou et al., 2020). The assembly sequences are publicly available from Enterobase; their accession numbers (barcodes) are listed in Supplementary Table 1.

Conjugation

Conjugation was conducted by solid mating on a filter (Whatman, Maidstone, UK) by using sodium azide-resistant *E. coli* J53 as a recipient, and selection of transconjugants on LB agar containing 150 µg/ml sodium azide and 16 µg/ml cefotaxime, as previously described (Li et al., 2021). The transfer of plasmid to transconjugants was confirmed by PCR targeting the *mcr-1* gene with primer *mcr-1-F* (5'-ATGATGCAGCATACTTCTGTG-3') and *mcr-1-R* (5'-TCAGCGGATGAATGCGGTG-3') (Luo et al., 2017), and further sequenced the plasmid DNA extracted from

selected transconjugants on Illumina HiSeq platform (MajorBio Co., Shanghai, China).

Nucleotide Sequence Accession Number

The raw sequence data of all 11 isolates were deposited in the Enterobase database under the barcode numbers: SAL_LB2715AA to SAL_LB2720AA. The assembly genome sequence of *S. typhimurium* 17Sal008 was deposited in the Nucleotide database under the accession number: CP050130 and CP050131.

RESULTS

Identification of *Salmonella*

The obtained isolates were confirmed as *S. enterica* serovar Typhimurium by biochemical confirmation, 16S rRNA gene sequencing, serotyping, and whole-genome sequencing. Multi-locus sequence typing analysis showed that all isolates belong to sequence type 34 (ST34).

Antibiotic Susceptibility and Antibiotic Resistance Determinants

All isolates were multi-drug resistant (MDR), exhibiting resistance to 5–10 antibiotic classes and were confirmed to carry 6–24 resistance genes by Resfinder (Table 1). All isolates were resistant to colistin with a MIC value of 4 µg/ml and carried the *mcr-1* gene (Table 1). The *mcr-1* gene was in the most conserved structure *mcr-1-orf* (the *orf* encodes the putative PAP family transmembrane protein) in eight isolates, and in the mobile structure IS*AplI-mcr-1-orf* in three isolates (Figure 1).

Nine isolates were resistant to cefotaxime with an MIC value of 4–256 µg/ml. Of them, two isolates produced ESBLs conferring high resistance levels to cefotaxime (with MIC values of 128 and 256 µg/ml, respectively), and were found to carry the *bla_{CTX-M-14}* gene. Seven isolates exhibited lower cefotaxime resistance with MIC values ranging from 4 to 32 µg/ml (Table 1).

Eight isolates were resistant to ciprofloxacin (with MIC values of 1–8 µg/ml, respectively), and seven of them harbored *oqxAB* and/or *qnrS2* (Table 1). No FQs resistance genes were identified in two isolates (SH16SF0786 and SH16SF0787). Mutations were not identified in the quinolone resistance-determining regions (*gyrA*, *gyrB*, *parC*, and *parE*) in all isolates.

Phenotypically, eight isolates were co-resistant to colistin, ciprofloxacin, and cefotaxime (Table 1). Among these isolates, one pork isolate SH16SF0850 co-harbored *mcr-1*, *bla_{CTX-M-14}*, and *oqxAB*, and the RTE pork isolate 17Sal008 co-harbored *mcr-1*, *bla_{CTX-M-14}*, *oqxAB*, and *qnrS2* genes (Table 1). In addition, all isolates were predicted to contain plasmids with replicon types IncI2, IncHI2, IncN, IncFII, and IncX4 (Table 1). Notably, both isolates SH16SF0850 and 17Sal008 carried *mcr-1*, *bla_{CTX-M-14}*, *oqxAB*, and/or *qnrS2* genes contained IncHI2 plasmid.

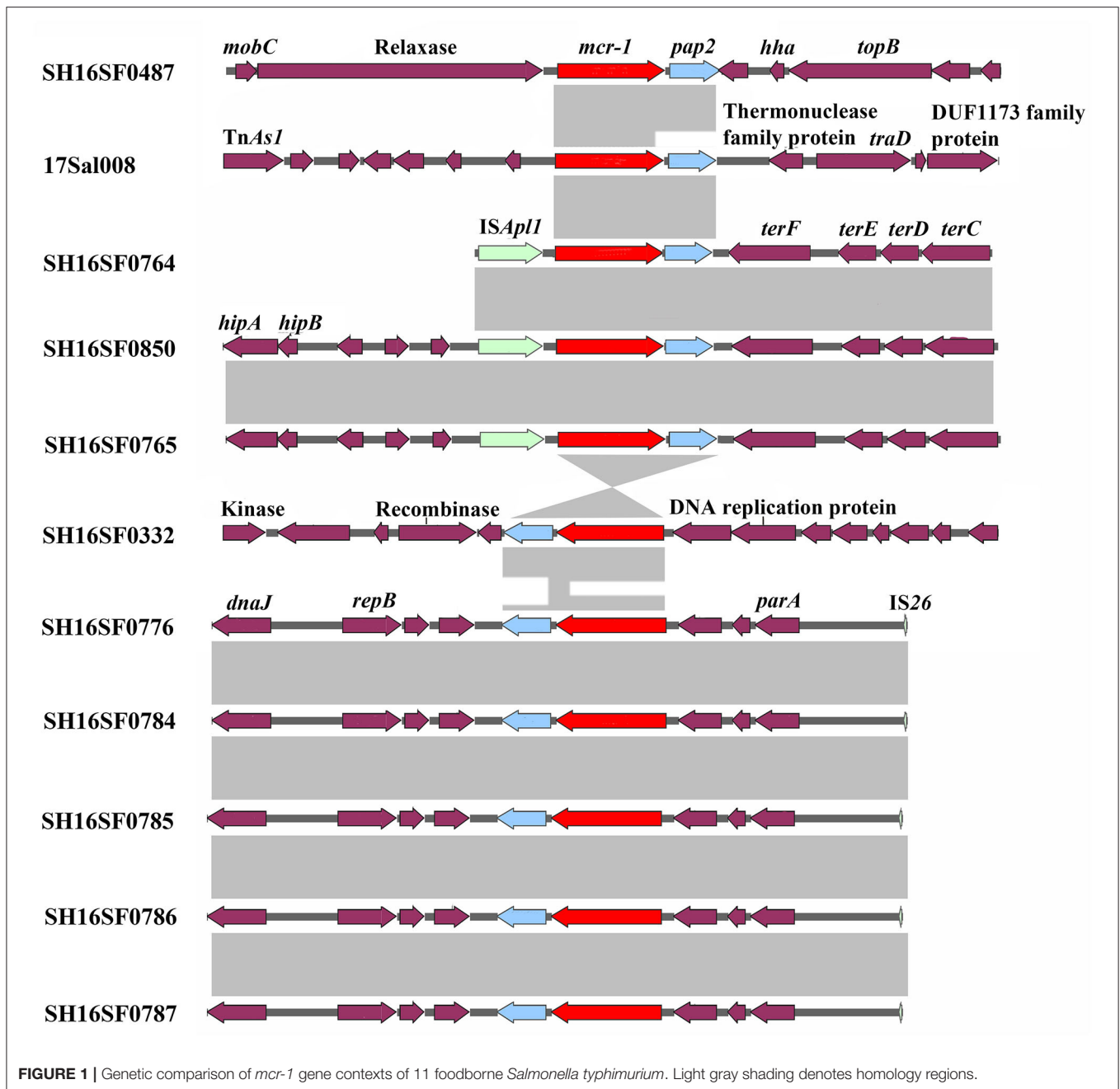
Phylogenetic Analysis and Genomic Comparisons

In this study, we found several clusters among the 83 *S. typhimurium* isolates from different sources in China

TABLE 1 | The antibiotic resistance profiles of *Salmonella typhimurium* isolates and the selected transformant of 17Sal008 (17Sal008T).

Strains	Inc group	MIC (mg/L)			Resistance determinants			Other resistance genes	Antibiotic resistance ^a
		PB	CIP	CTX	PB	CIP	ESBLs		
SH16SF0332	IncHI2 IncN	4	8	4	<i>mcr-1</i>	<i>oqxA, oqxB, qnrS2</i>	–	<i>arr-3, aac(6′)-Ib-cr, aadA1, aadA2, aph(3′)-Ia, bla_{OXA-1}, catB3, cmlA1, dfrA12, floR, mef(B), mph(A), sul1, sul3, tet(A), tet(B), tet(M)</i>	TOB, FEP, CHL, AMP, CIP, PB, SXT, NAL, TET
SH16SF0487	IncI2	4	<0.25	1	<i>mcr-1</i>	–	–	<i>aph(3′′)-Ib, aph(6′)-Id, bla_{TEM-1β}, tet(B), sul2</i>	TOB, AMP, PB, SXT, TET
SH16SF0764	IncHI2	4	<0.25	<0.25	<i>mcr-1</i>	<i>oqxA, oqxB</i>	–	<i>aadA1, aadA2, aph(3′′)-Ib, aph(6′)-Id, bla_{TEM-1β}, cmlA1, sul2, sul3, tet(B)</i>	TOB, CHL, AMP, CIP, PB, SXT, NAL, TET
SH16SF0765	IncHI2	4	<0.25	4	<i>mcr-1</i>	<i>oqxA, oqxB</i>	–	<i>aadA1, aadA2, aph(3′′)-Ib, aph(6′)-Id, bla_{TEM-1β}, cmlA1, sul2, sul3, tet(B)</i>	PB, TOB, CHL, AMP, CIP, SXT, NAL, TET
SH16SF0776	IncFII IncHI2 IncX4	4	4	4	<i>mcr-1</i>	<i>oqxA, oqxB</i>	–	<i>arr-3, aac(3)-IV, aac(6′)-Ib-cr, aadA1, aph(3′)-Ia, aph(3′′)-Ib, aph(4′)-Ia, aph(6′)-Id, bla_{OXA-1}, catB3, cmlA1, floR, mph(A), sul1, sul2, sul3, tet(A), tet(B)</i>	TOB, FEP, CHL, AMP, CIP, PB, SXT, NAL, TET, GEN
SH16SF0784	IncFII IncHI2 IncX4	4	4	8	<i>mcr-1</i>	<i>oqxA, oqxB</i>	–	<i>arr-3, aac(3)-IV, aac(6′)-Ib-cr, aadA1, aph(3′)-Ia, aph(3′′)-Ib, aph(4′)-Ia, aph(6′)-Id, bla_{OXA-1}, catB3, cmlA1, floR, sul1, sul2, sul3, tet(A), tet(B)</i>	TOB, FEP, CHL, AMP, CIP, PB, SXT, NAL, TET, GEN
SH16SF0785	IncFII IncHI IncX4	4	4	8	<i>mcr-1</i>	<i>oqxA, oqxB</i>	–	<i>arr-3, aac(3)-IV, aac(6′)-Ib-cr, aadA1, aph(3′)-Ia, aph(3′′)-Ib, aph(4′)-Ia, aph(6′)-Id, bla_{OXA-1}, catB3, cmlA1, floR, mph(A), sul1, sul2, sul3, tet(A), tet(B)</i>	TOB, FEP, CHL, AMP, CIP, PB, SXT, NAL, TET, GEN
SH16SF0786	IncFII IncHI IncX4	4	4	16	<i>mcr-1</i>	–	–	<i>arr-3, aac(3)-IV, aac(6′)-Ib-cr, aph(3′′)-Ib, aph(4′)-Ia, aph(6′)-Id, bla_{OXA-1}, catB3, floR, mph(A), sul1, sul2, tet(A), tet(B)</i>	TOB, FEP, CHL, AMP, CIP, PB, SXT, TET, GEN
SH16SF0787	IncFII IncHI IncX4	4	1	32	<i>mcr-1</i>	–	–	<i>arr-3, aac(3)-IV, aac(6′)-Ib-cr, aph(4′)-Ia, aph(6′)-Id, bla_{OXA-1}, catB3, mph(A), sul1, sul2, tet(A), tet(B)</i>	TOB, FEP, CHL, AMP, CIP, PB, SXT, TET, GEN
SH16SF0850	IncHI2	4	8	256	<i>mcr-1</i>	<i>oqxA, oqxB</i>	<i>bla_{CTX-M-14}</i>	<i>aadA1, aph(3′)-Ia, cmlA1, fosA3, sul1, sul3</i>	TOB, FEP, CHL, AMP, CTX, CIP, PB, SXT, NAL, CAZ
17Sal008	IncHI2	4	4	128	<i>mcr-1</i>	<i>oqxA, oqxB, qnrS2</i>	<i>bla_{CTX-M-14}</i>	<i>arr-3, aph(3′)-Ia, aadA1, aadA2, aac(6′)-Ib-cr, aac(3)-IV, aph(4′)-Ia, aph(3′′)-Ib, aph(6′)-Id, bla_{OXA-1}, cmlA1, catB3, dfrA12, floR, sul1, sul2, sul3, tet(A), tet(B)</i>	TOB, FEP, CHL, AMP, CTX, CIP, PB, SXT, NAL, TET, CAZ, GEN
17Sal008T	IncHI2	4	4	128	<i>mcr-1</i>	<i>oqxA, oqxB, qnrS2</i>	<i>bla_{CTX-M-14}</i>	<i>arr-3, aph(3′)-Ia, aadA1, aadA2, aac(6′)-Ib-cr, aac(3)-IV, aph(4′)-Ia, bla_{OXA-1}, dfrA12, cmlA1, catB3, floR, sul1, sul2, sul3, tet(A)</i>	TOB, FEP, CHL, AMP, CTX, CIP, PB, SXT, NAL, TET, CAZ, GEN
<i>E. coli</i> J53		0.5	<0.5	<0.25					

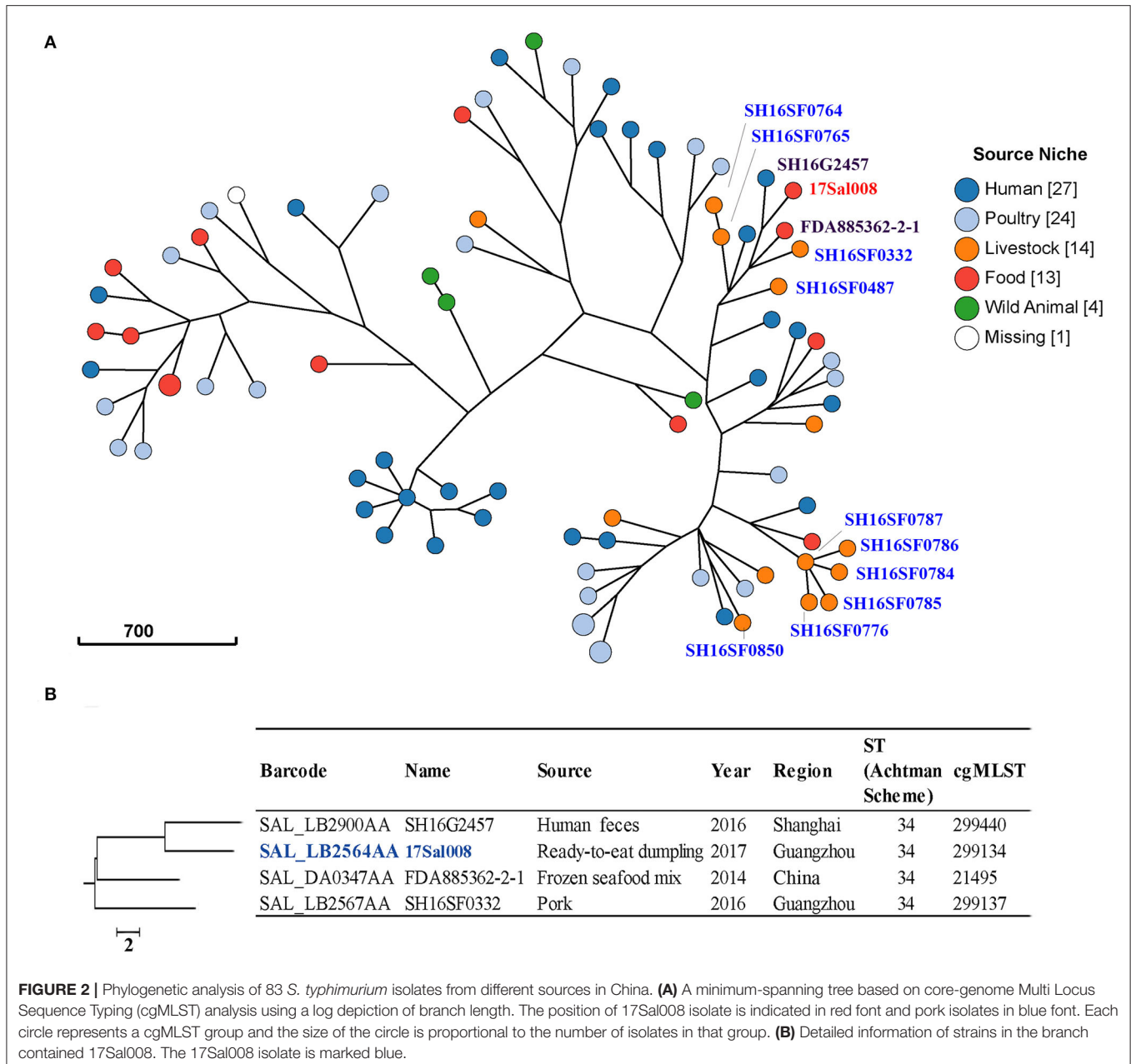
^a TOB, tobramycin; FEP, cefepime; CHL, chloramphenicol; AMP, ampicillin; CIP, ciprofloxacin; PB, polymyxin B; SXT, trimethoprim/sulfamethoxazole; NAL, nalidixic acid; TET, tetracycline; GEN, gentamicin; CAZ, ceftazidime.



(Figure 2A). These isolates belonged to six classical MLST types, with the most frequent being ST19 (45.8%) and ST34 (45.8%) (Supplementary Figure 1). cgMLST and phylogenetic analysis showed that all isolates harbored a unique cgST profile (Supplementary Table 1).

For the pork isolates, five of them (SH16SF0784, SH16SF0785, SH16SF0786, SH16SF0787, and SH16SF0776) collected in the same batch from Heyuan city were clustered together, and they belonged to the same HC5 cluster (Figure 2A, Supplementary Table 1), indicating they were highly probably

epidemiological linked. However, another two isolates (SH16SF0764 and SH16SF0765) from this batch were not linked with these five isolates, as indicated by different numbers at the HC10 cluster. Instead, the two isolates (SH16SF0764 and SH16SF0765) together with SH16SF0332 and SH16SF0487 were clustered with human isolate SH16G2457 (Barcode: SAL_LB2900AA), seafood isolate FDA885362-2-1 (Barcode: SAL_DA0347AA), and RTE pork isolate 17Sal008 (Figure 2A). However, no epidemiological links were observed among them (Supplementary Table 1). Specifically, for RTE pork isolate

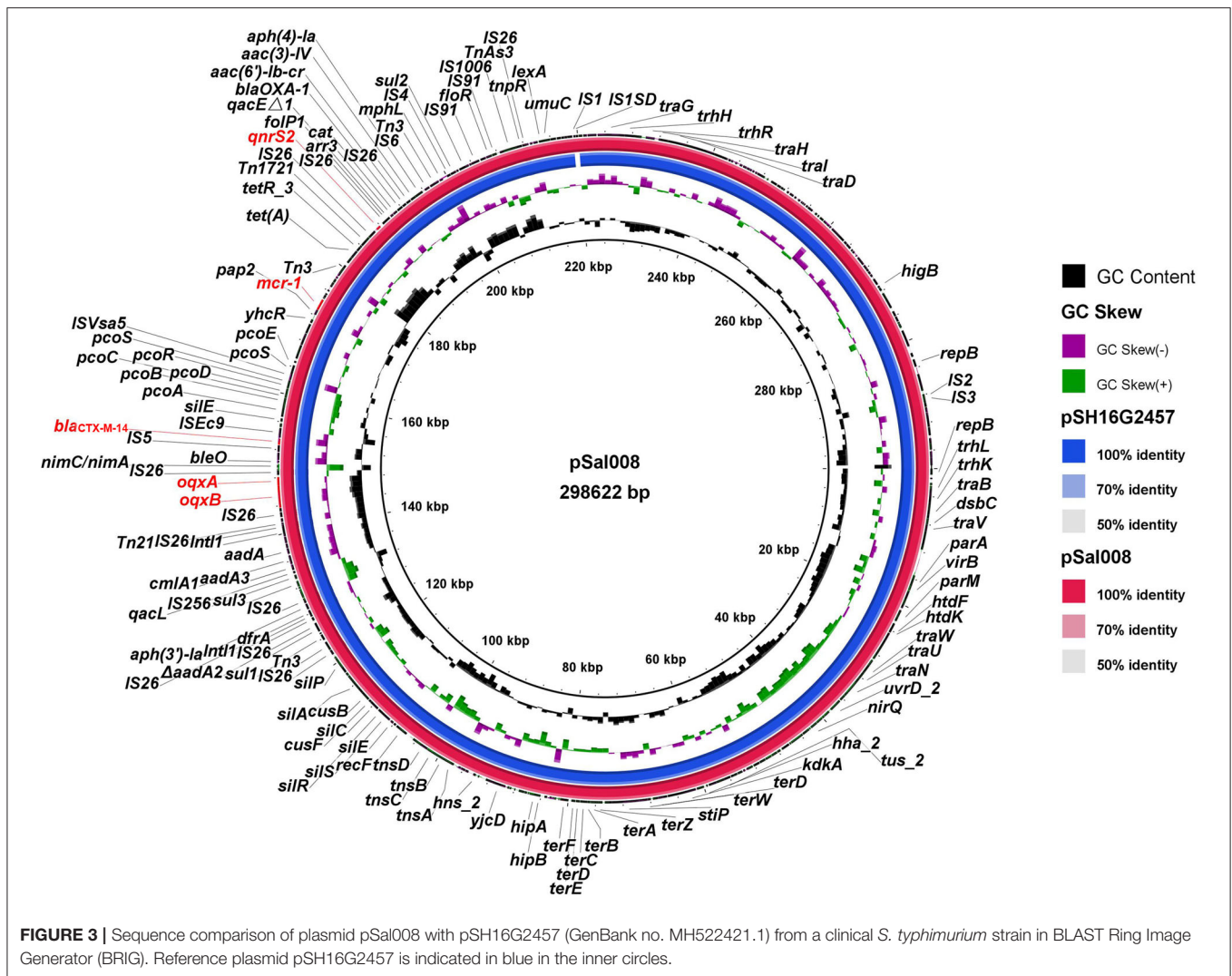


17Sal008, cgMLST results differentiated it with closely related human isolate SH16G2457 and seafood isolate FDA885362-2-1, as well as pork isolate SH16SF0332 up to HC10 level (a maximum of 10 cgMLST allelic variations) (**Figure 2B**, **Supplementary Table S3**). Therefore, it did not allow for inferring any epidemiological links between RTE pork isolate 17Sal008 with other strains in China.

In addition, no epidemiological links were identified in isolates from the same region but in different batches, such as pork isolates SH16SF0332, SH16SF0487, and SH16SF0850 (**Figure 2A**, **Supplementary Table 1**).

Comparative Analysis of Plasmid and Genetic Contexts Analysis

As *S. typhimurium* 17Sal008 was an MDR and an isolate identified from RTE pork product that was co-resistant to colistin, 3GCs, and FQs and harbored *mcr-1*, *bla*_{CTX-M-14}, *qnrS2*, and *oqxAB* genes which have not been reported previously, we further revealed the genetic contexts of MDR genes by a combination of short- and long-read sequencing (HiSeq and MinION). *S. typhimurium* 17Sal008 contained a circular plasmid, denoted as pSal008. The pSal008 is a 298,622 bp IncHI2 plasmid, with 374 predicted CDSs and



an average GC content of 46.9%. The pSal008 co-harbored 21 antibiotic resistance genes encoding resistance to aminoglycoside [*aac(3)-IV*, *aac(6')-Ib-cr*, *aadA1*, *aadA2*, *aph(3')-Ia* and *aph(4)-Ia*], colistin (*MCR-1*), β -lactam (*bla_{OXA-1}*, *bla_{CTX-M-14}*), fluoroquinolone (*oqxAB*, *qnrS2*), phenicol (*catB3*, *floR*, and *cmlA1*), rifampicin (*arr-3*), sulfonamide (*sul1*, *sul2*, and *sul3*), tetracycline [*tet(A)*], and trimethoprim (*dfrA12*). In addition, anticancer agents-bleomycin resistance encoding gene *bleO* along with the 5-nitroimidazole-based (5-Ni) antimicrobial resistance-encoding gene *nimC/nimA* were identified. The plasmid also harbors quaternary ammonium resistance genes (*qacL* and *qacEΔ1*) and a large number of metal tolerance genes, such as efflux systems to detoxify copper (*pcoABCDRSE*, *cusF*, and *cusB*), silver (*silACEPRS*), as well as tellurite resistance systems (*terABCDEFGHIWZ*). Pathogenicity-related virulence gene *virB* and HigB/HigA toxin/antitoxin system were also found on the plasmid. Transposons, such as IS26, were found to be abundant on the plasmid. In addition, two copies of Class I integrase were located on the plasmid (Figure 3).

BLASTn comparison of the entire plasmid sequence to microbial sequences in GenBank indicated that it was most closely related to pSH16G2457 (GenBank no. MH522421.1) from a *S. typhimurium* strain isolated from a 1-year-old diarrheal outpatients in Shanghai, China in 2016 (Figure 3), with 99.98% nucleotide identity and 99% sequence coverage.

The *mcr-1* gene in pSal008 was in the *mcr-1-orf* structure. The *oqxAB*, *qnrS2*, and *bla_{CTX-M-14}* were found to be located in composite transposons, IS26-*orf-oqxA-oqxB*-IS26, IS5-*bla_{CTX-M-14}-orf-ISEc9*, and IS26-*orf-qnrS2*-IS26-*folP1-qacEΔ1-arr3-cat-bla_{OXA-1}-aac(6')-Ib-cr*-IS26, respectively. The latter composite transposon contained an MDR gene cluster. BLASTn comparison of the composite transposons showed that they were widely distributed in chromosomal or plasmids of various *Enterobacteriaceae* species (data not shown).

Horizontal Transfer of the pSal008

PCR and sequencing results confirmed the successful transfer of the plasmid pSal008 to a plasmid-free recipient, *E. coli* J53. Antimicrobial susceptibility testing revealed the acquisition of

the plasmid by *E. coli* caused an 8-fold increase in the MIC value of polymyxin B, an 8-fold increase for ciprofloxacin, and a 512-fold increase for cefotaxime (Table 1).

DISCUSSION

The prophylactic use of colistin as a feed additive before 2016 has resulted in a significant increase in the rate of colistin resistance among organisms isolated from livestock and poultry farms in China (Shen et al., 2016). Food-producing animals have been considered a major reservoir of *mcr-1*-carrying bacteria (Liu et al., 2016; Yi et al., 2017; Moon et al., 2021; Sevilla et al., 2021; Timmermans et al., 2021). In this regard, pork has been considered one of the major contamination sources of *mcr-1*-harboring *Salmonella* (Hu et al., 2019; Lu et al., 2019; Elbediwi et al., 2020). Additional whole genomic characterization of *mcr-1*-harboring *Salmonella* from pork and pork products is required to fully understand the mechanism of their transmission and control their spread along the food chain. The *mcr-1* gene positive *S. typhimurium* ST34 strains were considered the main serotype contributing to the spread of the *mcr-1* gene among food-producing animals in China (Wong et al., 2013; Sun et al., 2014; Yi et al., 2017). In this study, we characterized 11 *mcr-1*-harboring *S. typhimurium* isolates recovered from retail pork and RTE pork products.

All of the isolates were MDR and contained multiple resistance genes. The colistin resistance was predicted to be encoded by the *mcr-1* gene. Different resistance levels were observed in 3GCs resistant strains. The strains exhibiting high-level resistance to cefotaxime were predicted to be associated with *bla*_{CTX-M-14}. Several strains were found to exhibit a low resistance level to cefotaxime without corresponding resistance genes, which might be explained by other mechanisms, such as efflux pumps (Jacoby, 2009). All ciprofloxacin-resistant strains were low-level resistant, which may be contributed to the combination of efflux pumps (*oqxAB*) and the presence of plasmid-mediated quinolone resistance (PMQR) determinant (*qnrS*) (Lin et al., 2015). In addition, no PMQRs and target mutations were observed in two ciprofloxacin-resistant isolates, which leads to the mechanisms to be further explored.

Importantly, most of these isolates were co-resistant to the front-line antibiotics, colistin, 3GCs, and FQs. Two of these isolates were identified to harbor plasmid-mediated *mcr-1*, ESBLs, and FQs genes. Co-occurrence of plasmid-mediated *mcr-1*, ESBLs, and FQs genes in *Salmonella* has only been sporadically reported (Hu et al., 2019; Lu et al., 2019; Luo et al., 2020). A large-scale epidemiological survey of 2,555 *Salmonella* isolates cultured from foods in China found only one isolate of *S. London* from raw pork that co-harbored plasmid-mediated *mcr-1*, *bla*_{CTX-M-55}, and *qnrS1* genes (Hu et al., 2019). Three out of 12,053 *Salmonella* isolates from diarrheal outpatients in China were confirmed to co-harbor *mcr-1*, ESBLs, and *qnrS* genes (Lu et al., 2019). One *S. typhimurium* isolate, collected from 280 bloodstream and 110 intestinal infection samples from inpatients in 15 provinces from 2014 to 2017, was confirmed to carry *mcr-1*, *bla*_{CTX-M-14}, *oqxAB*, and *qnrS1* genes (Luo et al., 2020). To the best of our knowledge, *S. typhimurium* ST34 isolate from an RTE food product harboring plasmid-mediated *mcr-1*, *bla*_{CTX-M-14},

oqxAB, and *qnrS2* genes has not been reported previously. Despite the frequency of co-occurrence of *mcr-1*, ESBLs, and FQs genes in *Salmonella* remains very low, the emergence of plasmid-mediated *mcr-1*, *bla*_{CTX-M-14}, *oqxAB*, and *qnrS2* genes in RTE pork product raises serious concern and should be further investigated, as they may transfer to a human directly.

The *mcr-1* gene was found to be more often inserted into the most conserved structure *mcr-1-orf* in pork and RTE pork isolates, suggesting it was stabilized and plasmids might be the more efficient vehicle for its disseminating. In RTE pork isolate 17Sal008, the *bla*_{CTX-M-14}, *oqxAB*, and *qnrS2* genes were located in composite transposons, which have been identified in plasmids of various *Enterobacteriaceae* species, indicating the acquisition of these genes by the plasmid pSal008 and the transferability of these genes among different bacteria species.

The InCHI2 type plasmid pSal008 identified in this study was observed to be transferable to *E. coli*. The highly similar pSH16G2457 has been confirmed to be capable of transferring from *S. typhimurium* strain to *S. typhi* and *K. pneumoniae*, and from *E. coli* to *Salmonella* spp. previously (Lu et al., 2019). Interestingly, phylogenetic and cgMLST analysis indicated that the host of pSal008 and the highly similar pSH16G2457 had no possible epidemiological links, which suggests the transfer of the plasmid among different *S. typhimurium* strains. These results together indicated that this plasmid is highly transferable and might contribute to the development of co-resistance to colistin, 3GCs, and FQs, which will compromise the effectiveness of current antimicrobial strategies and impose a therapeutic challenge.

Phylogenetic and cgMLST analysis showed that several *mcr-1* carrying pork *S. typhimurium* isolates from the same region and the same batch were highly probably epidemiological linked, suggesting they might come from the same source. Moreover, different *mcr-1* carrying *S. typhimurium* strains were present in pork regardless of the same or different regions. In addition, no possible epidemiological links were found in the colistin, 3GC, and FQs co-resistant RTE pork *S. typhimurium* 17Sal008 with isolates from different sources in China. Thus, the source of this isolate remains obscure. We suggest a continuous surveillance program be conducted to monitor the epidemic trends of *Salmonella* with colistin, 3GC, and FQs resistance in animal products, food, the community, and hospitals to help put forward effective control measures.

CONCLUSION

In summary, our study revealed that the *mcr-1* harboring *S. typhimurium* from raw pork and RTE pork products was all MDR, contained multiple genes, and some of them were highly probably epidemiological linked, indicating that pork and pork products were potential reservoirs of *mcr-1*-harboring *S. typhimurium*. To the best of our knowledge, we describe the first *S. typhimurium* ST34 isolate obtained from an RTE food product co-harboring plasmid-mediated *mcr-1*, *bla*_{CTX-M-14}, *oqxAB*, and *qnrS2* genes. The transmission of this plasmid may accelerate the development and dissemination of isolates co-resistant to colistin, 3GCs, and FQs that are front-line drugs of

choice for treating severe *Salmonella* infections. Thus, sustained surveillance needs to be conducted to monitor the epidemic trends of *Salmonella* with plasmid-mediated *mcr-1*, ESBLs, and FQs genes in animal products and RTE food products to prevent their transmission along the food chain.

DATA AVAILABILITY STATEMENT

The datasets presented in this study can be found in online repositories. The names of the repository/repositories and accession number(s) can be found in the article/**Supplementary Material**.

AUTHOR CONTRIBUTIONS

LL performed the experiment and wrote the manuscript. HM conceptualized and designed the study. XW involved in data analysis. RO revised the manuscript. JX and XX provided the

strains. CW and LS contributed reagents, materials, and analysis tools. All authors contributed to the article and approved the submitted version.

FUNDING

This work was supported by the National Natural Science Foundation of China (Grant Nos. 31901789 and 32001796), the Natural Science Foundation of Guangdong Province (Grant Nos. 2022A1515011685 and 2020A1515010218), and the Basic Research Project of Guangzhou (Grant No. 202002030145).

SUPPLEMENTARY MATERIAL

The Supplementary Material for this article can be found online at: <https://www.frontiersin.org/articles/10.3389/fmicb.2022.903268/full#supplementary-material>

REFERENCES

- Alikhan, N. F., Petty, N. K., Ben Zakour, N. L., and Beatson, S. A. (2011). BLAST Ring Image Generator (BRIG): simple prokaryote genome comparisons. *BMC Genomics* 12, 402. doi: 10.1186/1471-2164-12-402
- Bai, L., Zhao, J., Gan, X., Wang, J., Zhang, X., Cui, S., et al. (2016). Emergence and diversity of *Salmonella enterica* serovar *indiana* isolates with concurrent resistance to ciprofloxacin and cefotaxime from patients and food-producing animals in China. *Antimicrob. Agents Chemother.* 60, 3365–3371. doi: 10.1128/AAC.02849-15
- Bankevich, A., Nurk, S., Antipov, D., Gurevich, A. A., Dvorkin, M., Kulikov, A. S., et al. (2012). SPAdes: a new genome assembly algorithm and its applications to single-cell sequencing. *J. Comput. Biol.* 19, 455–477. doi: 10.1089/cmb.2012.0021
- Bonifait, L., Thépault, A., Baugé, L., Rouxel, S., Le Gall, F., and Chemaly, M. (2021). Occurrence of *Salmonella* in the cattle production in France. *Microorganisms* 9, 872. doi: 10.3390/microorganisms9040872
- Carattoli, A., Zankari, E., García-Fernández, A., Voldby Larsen, M., Lund, O., Villa, L., et al. (2014). In silico detection and typing of plasmids using PlasmidFinder and plasmid multilocus sequence typing. *Antimicrob. Agents Chemother.* 58, 3895–3903. doi: 10.1128/AAC.02412-14
- Carfora, V., Alba, P., Leekitcharoenphon, P., Ballarò, D., Cordaro, G., Di Matteo, P., et al. (2018). Colistin resistance mediated by *mcr-1* in ESBL-producing, multidrug resistant *Salmonella* infantis in broiler chicken industry, Italy (2016–2017). *Front. Microbiol.* 17, 1880. doi: 10.3389/fmicb.2018.01880
- Castanheira, M., Griffin, M. A., Deshpande, L. M., Mendes, R. E., Jones, R. N., and Flamm, R. K. (2016). Detection of *mcr-1* among *Escherichia coli* clinical isolates collected worldwide as part of the SENTRY antimicrobial surveillance program in 2014 and 2015. *Antimicrob. Agents Chemother.* 60, 5623–5624. doi: 10.1128/AAC.01267-16
- CLSI (2017). *Performance Standards for Antimicrobial Susceptibility Testing*. Wayne, PA: CLSI.
- Elbediwi, M., Pan, H., Jiang, Z., Biswas, S., Li, Y., and Yue, M. (2020). Genomic Characterization of *mcr-1*-carrying *Salmonella enterica* serovar 4,[5],12:i:- ST 34 clone isolated from pigs in China. *Front. Bioeng. Biotechnol.* 8, 663. doi: 10.3389/fbioe.2020.00663
- Falgenhauer, L., Waezsada, S. E., Gwozdziński, K., Ghosh, H., Doijad, S., Bunk, B., et al. (2016). Chromosomal locations of *mcr-1* and *bla_{CTX-M-15}* in fluoroquinolone-resistant *Escherichia coli* ST410. *Emerg. Infect. Dis.* 22, 1689–1691. doi: 10.3201/eid2209.160692
- GBD 2017 Non-Typhoidal *Salmonella* Invasive Disease Collaborators (2019). The global burden of non-typhoidal *Salmonella* invasive disease: a systematic analysis for the global burden of disease study 2017. *Lancet Infect. Dis.* 19, 1312–1324. doi: 10.1016/S1473-3099(19)30418-9
- Hu, Y., Fanning, S., Gan, X., Liu, C., Nguyen, S., Wang, M., et al. (2019). *Salmonella* harbouring the *mcr-1* gene isolated from food in China between 2012 and 2016. *J. Antimicrob. Chemother.* 74, 826–828. doi: 10.1093/jac/dky496
- Jacoby, G. A. (2009). AmpC beta-lactamases. *Clin. Microbiol. Rev.* 22, 161–182. doi: 10.1128/CMR.00036-08
- Kirk, M. D., Pires, S. M., Black, R. E., Caipo, M., Crump, J. A., Devleeschauwer, B., et al. (2015). World health organization estimates of the global and regional disease burden of 22 foodborne bacterial, protozoal, and viral diseases, 2010: a data synthesis. *PLoS Med.* 12, e1001921. doi: 10.1371/journal.pmed.1001921
- Li, Y., Zhang, Y., Chen, M., Hu, J., Zhang, H., Xiang, Y., et al. (2021). Plasmid-borne colistin resistance gene *mcr-1* in a multidrug resistant *Salmonella enterica* serovar *Typhimurium* isolate from an infant with acute diarrhea in China. *Int. J. Infect. Dis.* 103, 13–18. doi: 10.1016/j.ijid.2020.11.150
- Lin, D., Chen, K., Wai-Chi Chan, E., and Chen, S. (2015). Increasing prevalence of ciprofloxacin-resistant food-borne *Salmonella* strains harboring multiple PMQR elements but not target gene mutations. *Sci. Rep.* 5, 14754. doi: 10.1038/srep14754
- Litrup, E., Kiil, K., Hammerum, A. M., Roer, L., Nielsen, E. M., and Torpdahl, M. (2017). Plasmid-borne colistin resistance gene *mcr-3* in *Salmonella* isolates from human infections, Denmark, 2009–2017. *Euro. Surveill.* 22, 30587. doi: 10.2807/1560-7917.ES.2017.22.31.30587
- Liu, Y. Y., Wang, Y., Walsh, T. R., Yi, L. X., Zhang, R., Spencer, J., et al. (2016). Emergence of plasmid-mediated colistin resistance mechanism MCR-1 in animals and human beings in China: a microbiological and molecular biological study. *Lancet Infect. Dis.* 16, 161–168. doi: 10.1016/S1473-3099(15)00424-7
- Lu, X., Zeng, M., Xu, J., Zhou, H., Gu, B., Li, Z., et al. (2019). Epidemiologic and genomic insights on *mcr-1*-harbouring *Salmonella* from diarrhoeal outpatients in Shanghai, China, 2006–2016. *EBioMedicine* 42, 133–144. doi: 10.1016/j.ebiom.2019.03.006
- Luo, Q., Wan, F., Yu, X., Zheng, B., Chen, Y., Gong, C., et al. (2020). MDR *Salmonella enterica* serovar typhimurium ST34 carrying *mcr-1* isolated from cases of bloodstream and intestinal infection in children in China. *J. Antimicrob. Chemother.* 75, 92–95. doi: 10.1093/jac/dkz415
- Luo, Q., Yu, W., Zhou, K., Guo, L., Shen, P., Lu, H., et al. (2017). Molecular epidemiology and colistin resistant mechanism of *mcr*-positive and *mcr*-negative clinical isolated *Escherichia coli*. *Front. Microbiol.* 8, 2262. doi: 10.3389/fmicb.2017.02262
- Moon, D. C., Kim, S. J., Mechesso, A. F., Kang, H. Y., Song, H. J., Choi, J. H., et al. (2021). Mobile colistin resistance gene *mcr-1* detected on an IncI2 plasmid in

- Salmonella typhimurium* sequence type 19 from a healthy pig in South Korea. *Microorganisms* 9, 398. doi: 10.3390/microorganisms9020398
- Quan, J., Li, X., Chen, Y., Jiang, Y., Zhou, Z., Zhang, H., et al. (2017). Prevalence of *mcr-1* in *Escherichia coli* and *Klebsiella pneumoniae* recovered from bloodstream infections in China: a multicentre longitudinal study. *Lancet Infect. Dis.* 17, 400–410. doi: 10.1016/S1473-3099(16)30528-X
- Rau, R. B., de Lima-Morales, D., Wink, P. L., Ribeiro, A. R., and Barth, A. L. (2020). *Salmonella enterica mcr-1* positive from food in Brazil: detection and characterization. *Foodborne Pathog. Dis.* 17, 202–208. doi: 10.1089/fpd.2019.2700
- Saavedra, S. Y., Diaz, L., Wiesner, M., Correa, A., Arevalo, S. A., Reyes, J., et al. (2017). Genomic and molecular characterization of clinical isolates of enterobacteriaceae harboring *mcr-1* in Colombia, 2002 to 2016. *Antimicrob. Agents Chemother.* 61, e00841–17. doi: 10.1128/AAC.00841-17
- Seemann, T. (2014). Prokka: rapid prokaryotic genome annotation. *Bioinformatics* 30, 2068–2069. doi: 10.1093/bioinformatics/btu153
- Sevilla, E., Vico, J. P., Delgado-Blas, J. F., González-Zorn, B., Marín, C. M., Uruén, C., et al. (2021). Resistance to colistin and production of extended-spectrum β -lactamases and/or AmpC enzymes in *Salmonella* isolates collected from healthy pigs in Northwest Spain in two periods: 2008–2009 and 2018. *Int. J. Food Microbiol.* 338, 108967. doi: 10.1016/j.ijfoodmicro.2020.108967
- Shen, Z., Wang, Y., Shen, Y., Shen, J., and Wu, C. (2016). Early emergence of *mcr-1* in *Escherichia coli* from food-producing animals. *Lancet Infect. Dis.* 16, 293. doi: 10.1016/S1473-3099(16)00061-X
- Sun, J., Ke, B., Huang, Y., He, D., Li, X., Liang, Z., et al. (2014). The molecular epidemiological characteristics and genetic diversity of *Salmonella typhimurium* in Guangdong, China, 2007–2011. *PLoS ONE* 9, e113145. doi: 10.1371/journal.pone.0113145
- Timmermans, M., Wattiau, P., Denis, O., and Boland, C. (2021). Colistin resistance genes *mcr-1* to *mcr-5*, including a case of triple occurrence (*mcr-1*, -3 and -5), in *Escherichia coli* isolates from faeces of healthy pigs, cattle and poultry in Belgium, 2012–2016. *Int. J. Antimicrob. Agents* 57, 106350. doi: 10.1016/j.ijantimicag.2021.106350
- Wang, L. P., Zhou, S. X., Wang, X., Lu, Q. B., Shi, L. S., Ren, X., et al. (2021). Etiological, epidemiological, and clinical features of acute diarrhea in China. *Nat. Commun.* 12, 2464. doi: 10.1038/s41467-021-22551-z
- Wang, W., Baloch, Z., Zou, M., Dong, Y., Peng, Z., Hu, Y., et al. (2018). Complete genomic analysis of a *Salmonella enterica* serovar typhimurium isolate cultured from ready-to-eat pork in China carrying one large plasmid containing *mcr-1*. *Front. Microbiol.* 9, 616. doi: 10.3389/fmicb.2018.00616
- Wick, R. R., Judd, L. M., Gorrie, C. L., and Holt, K. E. (2017). Unicycler: resolving bacterial genome assemblies from short and long sequencing reads. *PLoS Comput. Biol.* 13, e1005595. doi: 10.1371/journal.pcbi.1005595
- Wong, M. H., Yan, M., Chan, E. W., Liu, L. Z., Kan, B., and Chen, S. (2013). Expansion of *Salmonella enterica* serovar typhimurium ST34 clone carrying multiple resistance determinants in China. *Antimicrob. Agents Chemother.* 57, 4599–4601. doi: 10.1128/AAC.01174-13
- Wu, L. J., Luo, Y., Shi, G. L., and Li, Z. Y. (2021). Prevalence, clinical characteristics and changes of antibiotic resistance in children with nontyphoidal *Salmonella* infections from 2009–2018 in Chongqing, China. *Infect. Drug Resist.* 14, 1403–1413. doi: 10.2147/IDR.S301318
- Yang, Y. Q., Zhang, A. Y., Ma, S. Z., Kong, L. H., Li, Y. X., Liu, J. X., et al. (2016). Co-occurrence of *mcr-1* and ESBL on a single plasmid in *Salmonella enterica*. *J. Antimicrob. Chemother.* 71, 2336–2338. doi: 10.1093/jac/dkw243
- Yi, L. X., Wang, J., Gao, Y. L., Liu, Y. Y., Doi, Y. H., Wu, R. J., et al. (2017). *mcr-1*-harboring *Salmonella enterica* serovar typhimurium sequence type 34 in Pigs, China. *Emerg. Infect. Dis.* 23, 291–295. doi: 10.3201/eid2302.161543
- Zankari, E., Hasman, H., Cosentino, S., Vestergaard, M., Rasmussen, S., Lund, O., et al. (2012). Identification of acquired antimicrobial resistance genes. *J. Antimicrob. Chemother.* 67, 2640–2644. doi: 10.1093/jac/dks261
- Zhang, J., Jin, H., Hu, J., Yuan, Z., Shi, W., Ran, L., et al. (2014). Serovars and antimicrobial resistance of non-typhoidal *Salmonella* from human patients in Shanghai, China, 2006–2010. *Epidemiol. Infect.* 142, 826–832. doi: 10.1017/S0950268813001659
- Zhang, W. H., Lin, X. Y., Xu, L., Gu, X. X., Yang, L., Li, W., et al. (2016). CTX-M-27 producing *Salmonella enterica* serotypes typhimurium and Indiana are prevalent among food-producing animals in China. *Front. Microbiol.* 7, 43. doi: 10.3389/fmicb.2016.00436
- Zhou, Z., Alikhan, N. F., Mohamed, K., Fan, Y., Agama Study Group., and Achtman, M. (2020). The Enterobase user's guide, with case studies on *Salmonella* transmissions, *Yersinia pestis* phylogeny, and *Escherichia* core genomic diversity. *Genome Res.* 30, 138–152. doi: 10.1101/gr.251678.119

Conflict of Interest: CW was employed by Shandong New Hope Liuhe Group Ltd., Qingdao, China.

The remaining authors declare that the research was conducted in the absence of any commercial or financial relationships that could be construed as a potential conflict of interest.

Publisher's Note: All claims expressed in this article are solely those of the authors and do not necessarily represent those of their affiliated organizations, or those of the publisher, the editors and the reviewers. Any product that may be evaluated in this article, or claim that may be made by its manufacturer, is not guaranteed or endorsed by the publisher.

Copyright © 2022 Li, Wan, Olsen, Xiao, Wang, Xu, Meng and Shi. This is an open-access article distributed under the terms of the Creative Commons Attribution License (CC BY). The use, distribution or reproduction in other forums is permitted, provided the original author(s) and the copyright owner(s) are credited and that the original publication in this journal is cited, in accordance with accepted academic practice. No use, distribution or reproduction is permitted which does not comply with these terms.