



## OPEN ACCESS

## EDITED BY

Haibo Zhang,  
Qingdao Institute of Bioenergy and Bioprocess  
Technology (CAS), China

## REVIEWED BY

Guang Zhao,  
Shandong University,  
China

Zheng-Jun Li,  
Beijing University of Chemical Technology,  
China

## \*CORRESPONDENCE

Xiao-Ran Jiang  
✉ jlujxr@163.com  
Xiancai Rao  
✉ raioxiancai@126.com

## SPECIALTY SECTION

This article was submitted to  
Microbiotechnology,  
a section of the journal  
Frontiers in Microbiology

RECEIVED 17 November 2022

ACCEPTED 31 December 2022

PUBLISHED 16 January 2023

## CITATION

Su Q, Cheng P, Sun J, Zhang Y, Zheng Y, Jiang  
X-R and Rao X (2023) Engineering a  
mevalonate pathway in *Halomonas  
bluephagenesis* for the production of lycopene.  
*Front. Microbiol.* 13:1100745.  
doi: 10.3389/fmicb.2022.1100745

## COPYRIGHT

© 2023 Su, Cheng, Sun, Zhang, Zheng, Jiang  
and Rao. This is an open-access article  
distributed under the terms of the [Creative  
Commons Attribution License \(CC BY\)](#). The  
use, distribution or reproduction in other  
forums is permitted, provided the original  
author(s) and the copyright owner(s) are  
credited and that the original publication in this  
journal is cited, in accordance with accepted  
academic practice. No use, distribution or  
reproduction is permitted which does not  
comply with these terms.

# Engineering a mevalonate pathway in *Halomonas bluephagenesis* for the production of lycopene

Qixuan Su<sup>1</sup>, Ping Cheng<sup>2</sup>, Jiyuan Sun<sup>2</sup>, Yulin Zhang<sup>1</sup>, Yang Zheng<sup>2</sup>,  
Xiao-Ran Jiang<sup>2\*</sup> and Xiancai Rao<sup>1,2\*</sup>

<sup>1</sup>Cancer Center, Medical Research Institute, Southwest University, Chongqing, China, <sup>2</sup>Department of  
Microbiology, College of Basic Medical Sciences, Army Medical University (Third Military Medical University),  
Chongqing, China

**Introduction:** Red-colored lycopene has received remarkable attention in medicine because of its antioxidant properties for reducing the risks of many human cancers. However, the extraction of lycopene from natural hosts is limited. Moreover, the chemically synthesized lycopene raises safety concerns due to residual chemical reagents. *Halomonas bluephagenesis* is a versatile chassis for the production of fine chemicals because of its open growth property without sterilization.

**Methods:** A heterologous mevalonate (MVA) pathway was introduced into *H. bluephagenesis* strain TD1.0 to engineer a bacterial host for lycopene production. A pTer7 plasmid mediating the expression of six MVA pathway genes under the control of a phage  $P_{Mmp1}$  and an *Escherichia coli*  $P_{trc}$  promoters and a pTer3 plasmid providing lycopene biosynthesis downstream genes derived from *Streptomyces avermitilis* were constructed and transformed into TD1.0. The production of lycopene in the engineered *H. bluephagenesis* was evaluated. Optimization of engineered bacteria was performed to increase lycopene yield.

**Results:** The engineered TD1.0/pTer7-pTer3 produced lycopene at a maximum yield of 0.20 mg/g dried cell weight (DCW). Replacing downstream genes with those from *S. lividans* elevated the lycopene production to 0.70 mg/g DCW in the TD1.0/pTer7-pTer5 strain. Optimizing the  $P_{Mmp1}$  promoter in plasmid pTer7 with a relatively weak  $P_{trc}$  even increased the lycopene production to 1.22 mg/g DCW. However, the change in the  $P_{trc}$  promoter in pTer7 with  $P_{Mmp1}$  did not improve the yield of lycopene.

**Conclusion:** We first engineered an *H. bluephagenesis* for the lycopene production. The co-optimization of downstream genes and promoters governing MVA pathway gene expressions can synergistically enhance the microbial overproduction of lycopene.

## KEYWORDS

*Halomonas bluephagenesis*, carotenoid products, lycopene, mevalonate pathway, lycopene biosynthesis

## Introduction

Lycopene (C<sub>40</sub>H<sub>56</sub>, 536.85 Da) is a common carotenoid responsible for the red color in some plants, algae, fungi, and bacteria (Andrewes et al., 1976). It acts as a principal chemical in carotenoid production (Sharma et al., 2016). Other carotenoid pigments, such as β-carotene, astaxanthin, and canthaxanthin, are synthesized from lycopene (Rad et al., 2012). The straight-chain hydrocarbon of lycopene contains 11 double conjugated bonds and two nonconjugated double bonds, enabling its antioxidant properties (Shi and Le Maguer, 2000; Ma et al., 2016). Lycopene has received remarkable attention in medicine because of its excellent effects on human disease control, such as tumor suppression (Aghajanzpour et al., 2017; Grether-Beck et al., 2017) and cardiovascular system protection (Müller et al., 2016). Clinical studies have shown that dietary lycopene can inhibit the spread of established tumors, including prostate, colorectal, gastric, pancreatic, and lung cancers

(Singh and Goyal, 2008). Thus, the large-scale production of lycopene is vital to meeting the growing demand for natural additives or drugs.

Lycopene has largely been extracted from plants with nonpolar solvents, such as tomatoes and carrots (Rad et al., 2012). However, the unstable supply of raw plant sources and the finite content make lycopene production costly (Saini and Keum, 2018). The chemical synthesis of lycopene is feasible. However, it often raises safety concerns because of chemical reagent residue (Ernst, 2002; Reynaud et al., 2011). Recently, researchers have devoted much effort to lycopene production *via* fermentation with microbial chassis cells, including *Escherichia coli* and *Saccharomyces cerevisiae* (Rad et al., 2012; Li et al., 2019). Two biosynthetic pathways, the mevalonate (MVA) pathway and the 2C-methyl-D-erythritol 4-phosphate (MEP) pathway, are characterized as the upstream module involved in lycopene synthesis in organisms (Rohmer et al., 1993; Yang et al., 2012). Eukaryotes commonly use the MVA pathway to synthesize lycopene, whereas most bacteria carry the MEP pathway (Bloch et al., 1959; Moise et al., 2014; Li et al., 2018; Ma Y. R. et al., 2019). Compared with the MEP pathway, the MVA pathway is often economical and highly efficient (Cunningham et al., 1994). The MVA synthetic pathway starts from acetyl-CoA to produce isoprene pyrophosphate (IPP) under the catalysis of specific enzymes, including acetyl-CoA acetyltransferase (MvaE), hydroxymethylglutaryl-CoA synthase (MvaS), mevalonate kinase (Mvk), mevalonate 5-phosphate kinase (Pmk), and mevalonate pyrophosphate decarboxylase (MvaD; Jervis et al., 2019). The MEP pathway begins from pyruvate and D-glyceraldehyde 3-phosphate to synthesize IPP (Moise et al., 2014; Li et al., 2018). IPP can be isomerized to dimethylallyl diphosphate (DMAPP) *via* isomerase (IDI). IPP and DMAPP are substrates for final lycopene production *via* the downstream enzymes, including geranylgeranyl diphosphate synthase (CrtE), phytoene synthase (CrtB), and lycopene synthase (CrtI; Sun et al., 2014).

As for metabolic engineering, heterogeneous genes involved in both upstream and downstream, modules of lycopene biosynthesis can be selected and constructed into a single chassis to generate a microbial host of interest (Jervis et al., 2019). Many optimizing strategies, including precursor substance increase, synthetic gene expression enhancement, competitive pathway gene inhibition, and by-product synthesis reduction, have been performed to increase lycopene yield (Kim and Keasling, 2001; Wang et al., 2012; Yan et al., 2013; Wang et al., 2014). In the present study, a heterologous MVA pathway carrying *mvaE* and *mvaS* genes derived from *Enterococcus faecalis* (*Ef*), *mvaK1*, *mvaK2*, and *mvaD* genes originated from *Streptococcus pneumoniae* (*Sp*), and *idi* gene derived from *E. coli* (*Ec*) was constructed in the pTer7 plasmid that was subsequently transformed into *Halomonas bluephagenesis* strain TD1.0, a non-carotenogenic bacterium that can grow pollution-free in unsterilized seawater (Manachini and Fortina, 1998; Yin et al., 2014; Zhao et al., 2017; Jervis et al., 2019). After the co-transformation of the pTer3 plasmid containing *crtE*, *crtB*, and *crtI* lycopene biosynthesis downstream genes from *Streptomyces avermitilis* (*Sa*), the engineered TD1.0/pTer7-pTer3 could successfully produce lycopene by a yield of 0.20 mg/g dried cell weight (DCW). Replacing downstream genes with those from *S. lividans* (*Sl*) considerably increased the lycopene production to 0.70 mg/g DCW. Further optimization of promoters involved in the MVA pathway even elevated lycopene yield to 1.22 mg/g DCW, which was a 6.1-fold increase relative to that produced by TD1.0/pTer7-pTer3. Our data showed that an engineered *H. bluephagenesis* is successfully generated for lycopene production. Changing the source of metabolism-responsible genes and optimization module gene promoters can effectively promote the microbial production of lycopene.

## Materials and methods

### Bacterial strains and growth conditions

The bacterial strains used in this study are listed in [Supplementary Table 1](#). *H. bluephagenesis* TD1.0 (CGMCC 4353), a novel T7-like RNA polymerase-integrated derivative of the wild-type *H. bluephagenesis* strain TD01 that was isolated from Aydingol Lake of Xinjiang province in China (Zhao et al., 2017), was used as a chassis. *Escherichia coli* S17-1 was used to manipulate plasmids and served as the conjugation donor (Simon, 1984). *E. coli* strain was cultured at 37°C in the Luria-Bertani (LB) medium (Analytical reagent, Oxoid, England) or plated on LB agar for 16 h. *H. bluephagenesis* TD1.0 and its derivatives were cultivated with 60-LB medium (LB medium supplemented with 60 g/L NaCl) or 60-LB agar at 37°C for 16 h. Whenever necessary, the bacterial media were supplemented with chloramphenicol (Cm, 25 µg/mL), kanamycin (Kan, 50 µg/mL), or spectinomycin (Spe, 100 µg/mL) for maintaining plasmids.

### Plasmid construction

The plasmids used in this study are listed in [Supplementary Table 1](#). All plasmids were constructed using Gibson Assembly (Gibson et al., 2009) with appropriate fragments obtained by polymerase chain reaction (PCR) with the primers mentioned in [Supplementary Table 2](#). Taking the construction of pTer1 plasmid as an example, primers with 20–40 bp homologous regions were designed. A small DNA fragment (3,561 bp) carrying OriT/OriV was amplified from the pSEVA321 plasmid template with primer pairs ter1-3/R24. A large fragment (8,827 bp) containing the heterogeneous MVA pathway genes, including *EfmvaE*, *EfmvaS*, *SpmvaK1*, *SpmvaK2*, *SpmvaD*, and *Ecidi* under the control of two *E. coli*  $P_{trc}$  promoters cloned in pMVA2 (Jervis et al., 2019), was also obtained by PCR using primers ter1-1/ter1-2. The PCR fragments were purified by a DNA purification kit (Sangon Biotech, China) and ligated with a Gibson Assembly kit [New England Biolabs (Beijing), China]. Then, the ligation product was electroporated into *E. coli* S17-1 competent cells and plated on LB agar supplemented with 25 µg/mL of Cm. After 16 h of incubation at 37°C, the Cm-resistant colonies were picked and cultured in LB broth with Cm at 37°C overnight. The plasmid was extracted with a plasmid extraction kit (Tiangen Biotech, China) and subjected to PCR verification and DNA sequencing. The relevant plasmid was designated as pTer1 ([Supplementary Table 1](#)). Other plasmids were constructed in the same way, using specific DNA templates and primers.

### Bacterial conjugation

*H. bluephagenesis* was unable to undergo chemical and electrical transformation; therefore, a conjugation was performed (Jiang et al., 2021). Briefly, the 20-LB medium (LB supplemented with 20 g/L NaCl) was used in the conjugation experiment to allow the surviving of *E. coli* donor cells. A single colony of *E. coli* S17-1 carrying certain plasmid was cultured in LB medium at 37°C for 16 h. After culture, *E. coli* cells were transferred to fresh LB (1% inoculation) and incubated at 37°C to achieve an optical density (OD) at 600 nm ( $OD_{600}$ ) of 0.5–0.6. The bacterial cells in 1 mL culture were recovered by centrifugation at 2,500 × g for 5 min and resuspended with 50 µL of 20-LB without

antibiotics. *H. bluephagenesis* TD1.0 was cultivated with 60-LB and prepared as mentioned above. *H. bluephagenesis* TD1.0 sample was 1:1 (vol/vol) mixed with the plasmid-carried *E. coli* S17-1 donor cells and inoculated into 20-LB agar without antibiotics. After 6 h of incubation at 37°C, the bacteria were collected and streaked onto 60-LB agar plate with appropriate antibiotics corresponding to the plasmid and cultured at 37°C for 16 h. The single colony was selected and cultured in 60-LB medium. The plasmid in the conjugated *H. bluephagenesis* TD1.0 was extracted and verified with PCR amplification.

## Bacterial growth curve

*H. bluephagenesis* TD1.0 or its derivatives were cultured in a small conical flask (100 mL) with 60-LB broth at 37°C overnight with shaking. On the next day, the culture was inoculated (1%) to 20 mL fresh 60-LB medium. A total of 50 µL culture was taken every hour and dropped in triplicate into the wells of a 96-well plate, and the OD<sub>600</sub> value was detected by a FLUOstar Omega microplate reader (BMG Labtech). The growth curve was drawn by plotting OD<sub>600</sub> values vs. culture time.

## Shake flask fermentation

Three colonies of *H. bluephagenesis* TD1.0 or its variants were taken from a 60-LB agar plate for each experiment, inoculated individually into 2 mL of 60-LB medium, and then cultured at 37°C for 12–16 h. Subsequently, the culture was transferred to 20 mL of 60-LB medium in a 100-mL conical flask (1% inoculum, vol/vol) and cultured at 37°C to an OD<sub>600</sub> value of 0.6–0.8. Then, the secondary culture was inoculated into 50 mL fresh 60-MMG medium [Minimal medium containing 60 g/L NaCl, 0.05% urea (m/vol), 0.02% MgSO<sub>4</sub> (m/vol), 1.0% Na<sub>2</sub>HPO<sub>4</sub>·12H<sub>2</sub>O (m/vol), 0.15% KH<sub>2</sub>PO<sub>4</sub> (m/vol), 1.0% trace element solution I (vol/vol), 0.1% trace element solution II (vol/vol), and 0.1% yeast extract (m/vol)]. The pH of the solution was adjusted to 8.0–8.5 using 5 M NaOH. Trace element solution I comprises 0.5% Fe (III)-NH<sub>4</sub>-citrate (m/vol) and 0.2% CaCl<sub>2</sub> (m/vol) dissolved in 1 M HCl; Trace element solution II contains 0.01% ZnSO<sub>4</sub>·7H<sub>2</sub>O (m/vol), 0.003% MnCl<sub>2</sub>·4H<sub>2</sub>O (m/vol), 0.03% H<sub>3</sub>BO<sub>3</sub> (m/vol), 0.02% CoCl<sub>2</sub>·6H<sub>2</sub>O (m/vol), 0.003% NaMoO<sub>4</sub>·2H<sub>2</sub>O (m/vol), 0.002% NiCl<sub>2</sub>·6H<sub>2</sub>O (m/vol), and 0.001% CuSO<sub>4</sub>·5H<sub>2</sub>O (m/vol) dissolved in 1 M HCl. Glucose was added at a final concentration of 3% (m/vol) at the beginning of the experiment in a 500-mL conical flask (5% inoculum, vol/vol) and cultured at 37°C for 48 h with shaking. Then, 30 mL of fermentation culture was harvested and pelleted by centrifugation at 10,000 ×g for 10 min at 4°C in a sterile centrifuge tube (50 mL) that had been prepared and weighed. The supernatant was removed, the tube was sealed with plastic wrap and placed in a –80°C refrigerator for 1 h, then bacterial cells were treated with a lyophilizer at least 8 h. The total weight was weighed, and the dried cell weight (DCW) was calculated.

## High performance liquid chromatography analysis

After flask fermentation, 1 mL of the culture was centrifuged at 5,000 ×g for 5 min, and bacterial cells were resuspended and lysed with acetone solution (using 1% butylated hydroxytoluene), vortexed for 5 min. Then, the cell lysate was centrifuged at 10,000 ×g for 5 min, and

the supernatant was filtered through a 0.22 µm filter (Millipore) into the liquid sample bottle. Lycopene standard was prepared and diluted with acetone for five concentration gradients (1.25, 2.50, 5.00, 10.00, and 20.00 mg/mL) to draw standard curves, as previously described (Ma T. et al., 2019). An high performance liquid chromatography (HPLC) system (Agilent 1,260 Infinity II; Agilent Technologies, United States) equipped with a C<sub>18</sub> column (4.6 mm × 150 mm; 5 µm; Agilent Technologies, United States) was used. The following parameters were set for HPLC analysis: The flow rate was 1 mL/min, the column temperature was kept at 30°C, the detection wavelength was 470 nm, and the mobile phase ratios of the solvents methanol/acetonitrile/isopropanol were 42/42/16, respectively. The peak area of the sample was substituted into the standard curve, and the lycopene yield was computed.

## RT-qPCR determination

*H. bluephagenesis* TD1.0 or its derivatives were cultured with 60-LB broth at 37°C for 16 h. The overnight culture was inoculated into 2 mL of fresh 60-LB medium (1% inoculum, vol/vol) and cultured at 37°C. Diverse concentrations of IPTG were added when the OD<sub>600</sub> reached 0.5–0.6. The bacterial cells were harvested and the total RNA was extracted using a RNeasy Pure Cell/Bacteria Kit (Qiagen, China). For each sample, three duplicate samples were prepared. The first cDNA was synthesized with a RevertAid First Strand cDNA Synthesis Kit (Thermo Fisher Scientific). A quantitative polymerase chain reaction (qPCR) was conducted, and the relative expression level of each gene of interest was calculated as a ratio of its C<sub>t</sub> value relative to that of the reference 16S rRNA gene.

## Statistical analysis

All results were analyzed with GraphPad Prism 8. Results derived from samples between two groups were treated with unpaired two-tailed Student's *t*-test, and the difference between groups was calculated with analysis of variance (ANOVA). Each experiment was conducted at least three times, and the data were presented as mean ± standard deviations (SD). The statistically significant was considered as a *p*-value < 0.05.

## Results

### Construction of lycopene synthetic pathway in *Halomonas bluephagenesis*

Two biosynthesis pathways (MVA and MEP) involved in lycopene production have been characterized in microorganisms, such as *E. coli* and *Pseudomonas putida* (Rohmer et al., 1993; Hernandez-Arranz et al., 2019). *H. bluephagenesis* has a potential MEP pathway for producing DMAPP from phosphoglyceraldehyde (Supplementary Figure 1). However, it lacks the downstream enzymes in the conversion of DMAPP to lycopene. The MEP pathway in *H. bluephagenesis* carries seven genes, and the long metabolic pathway may be tied to unknown physiological control elements to reduce the production efficiency of DMAPP. Therefore, a pTer1 plasmid was constructed by ligating a small fragment derived from the pSEVA321 vector and a large fragment amplified from the pMVA2 plasmid that

carries microbial MVA pathway genes, including *EfmvaE*, *EfmvaS*, *SpmvaK1*, *SpmvaK2*, *SpmvaD*, and *Ecidi* (Jervis et al., 2019; Supplementary Figure 2). The *E. coli*  $P_{trc}$  promoter upstream of *EfmvaE* and *EfmvaS* genes was replaced by a strong one ( $P_{Mnp1}$ ) derived from phage Mmp1 (Zhao et al., 2017; Figure 1A). The resultant plasmid was designated as pTer7 (Supplementary Figure 3A). After the transformation into *E. coli* S17-1, the construction of pTer7 was verified via PCR amplification and DNA sequencing (Figure 1C; Supplementary Figure 3). Bacterial conjugation was performed using *E. coli* S17-1/pTer7 as a donor and *H. bluephagenesis* strain TD1.0 as the recipient bacterium. The successfully conjugated pTer7 in TD1.0 was further characterized by PCR amplification (Figure 1D).

We generated a pTer3 plasmid that carries the *crtE*, *crtI*, and *crtB* derived from *S. avermitilis* in the pSEV434 plasmid to introduce the downstream of the lycopene synthetic pathway to *H. bluephagenesis* strain TD1.0 (Supplementary Figure 1; Supplementary Table 1). The resultant pTer3 in *E. coli* S17-1 and *H. bluephagenesis* strain TD1.0 was extracted and verified via PCR amplification and DNA sequencing, respectively (Figures 1C,D; Supplementary Figure 4). *H. bluephagenesis* strain TD1.0/pTer7-pTer3 showed a similar growth rate to the wild-type TD1.0, indicating successful carriage of dual plasmids in *H. bluephagenesis* strain TD1.0 (Figure 1E).

## Production of lycopene in *Halomonas bluephagenesis* TD1.0/pTer7-pTer3

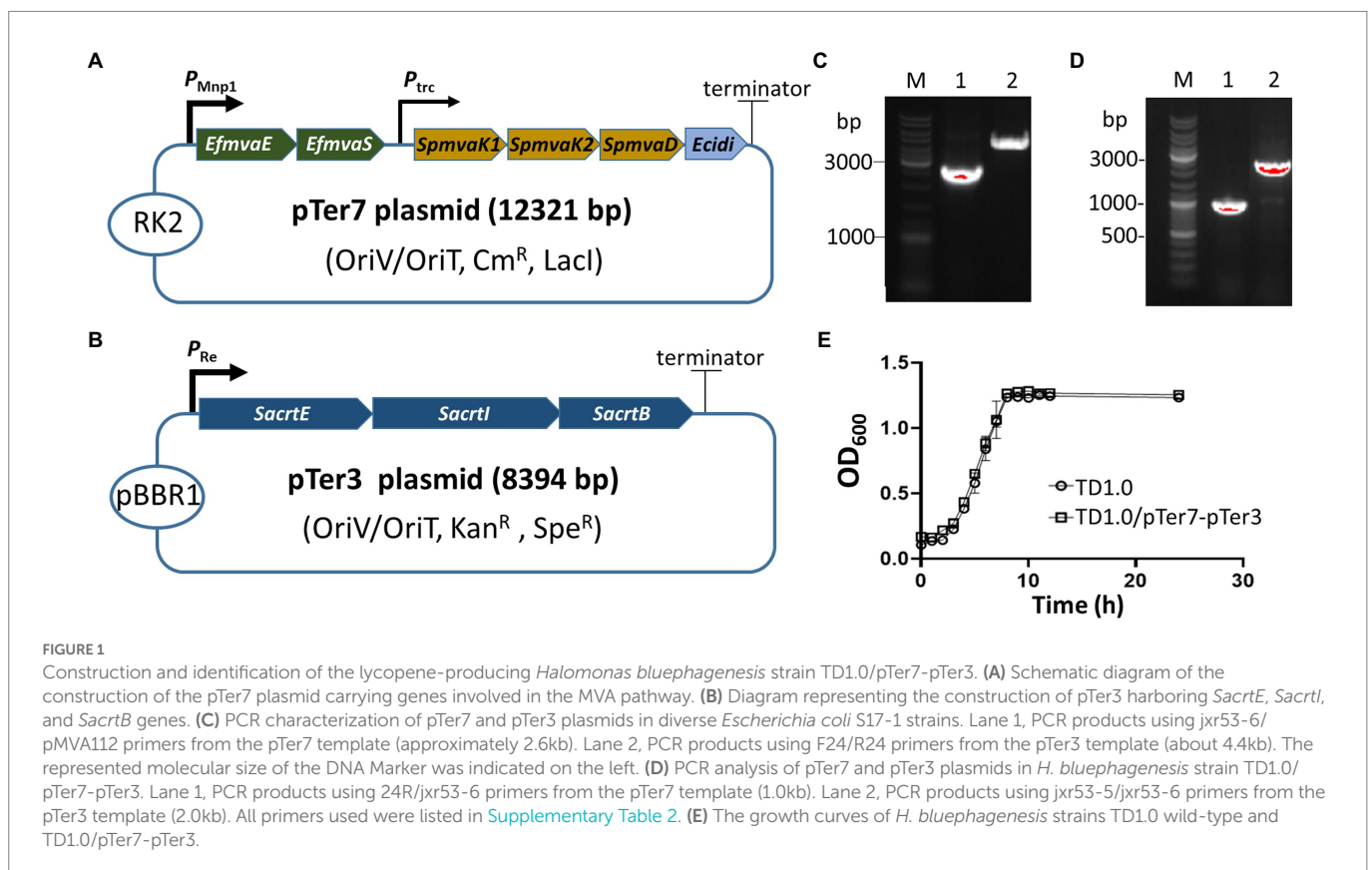
The genes of the MVA pathway in the pTer7 plasmid were under the control of two promoters,  $P_{Mnp1}$  and  $P_{trc}$ . They were regulated by the LacI repressor (Supplementary Figure 3A). In comparison, the

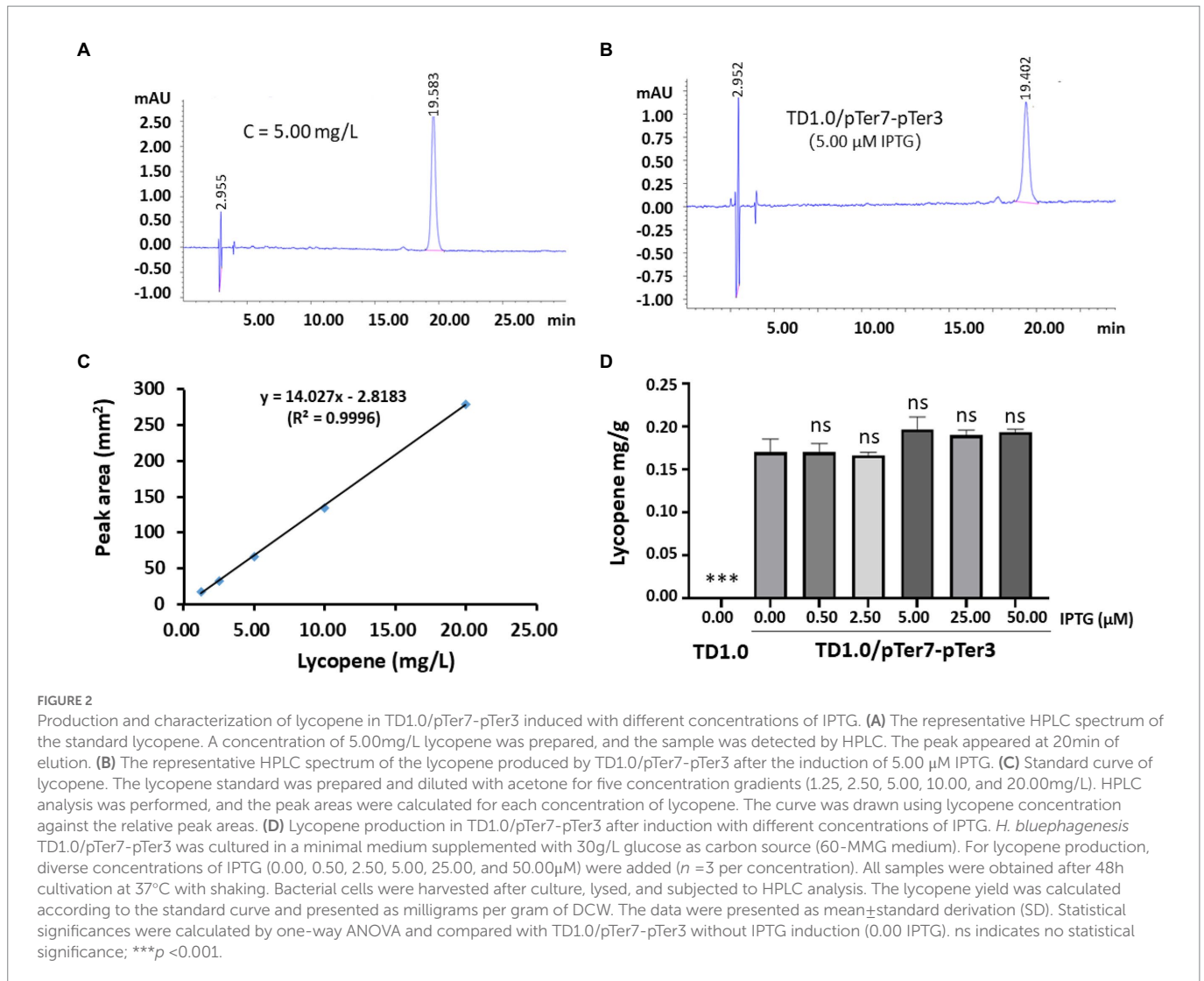
expression of *SacrE*, *SacrI*, and *SacrB* genes by pTer3 plasmid was constitutive (Figure 1B). *H. bluephagenesis* TD1.0/pTer7-pTer3 was cultured and induced by 5.00  $\mu$ M IPTG to detect the potential lycopene production. The standard lycopene was purchased, and a specific HPLC peak was produced for 5.00 mg/L lycopene (Figure 2A). A similar HPLC peak was presented using the cell lysate sample from the engineered TD1.0/pTer7-pTer3 but not when the wild-type TD1.0 was used (Figure 2B). This finding suggested the production of lycopene in TD1.0/pTer7-pTer3.

Several concentrations of lycopene standard (1.25, 2.50, 5.00, 10.00, and 20.00 mg/L) were prepared, and a standard curve was drawn (Figure 2C). *H. bluephagenesis* TD1.0/pTer7-pTer3 was cultured. Lycopene production was induced with diverse concentrations of IPTG (0.00, 0.05, 2.50, 5.00, 25.00, and 50.00  $\mu$ M) and analyzed via HPLC. The results showed that the wild-type TD1.0 produced no detectable lycopene. A maximum yield of approximately 0.20 mg/g (DCW) was achieved in TD1.0/pTer7-pTer3 under the induction of 5.00  $\mu$ M IPTG (Figure 2D). Comparable lycopene production was observed in TD1.0/pTer7-pTer3 induced with different IPTG concentrations (Figure 2D). These data indicated that the leak expression of pTer7 can occur, or the intrinsic MEP pathway of *H. bluephagenesis* contributes to lycopene biosynthesis.

## Change in the downstream module genes increased the lycopene production in *Halomonas bluephagenesis*

The biosynthesis pathway genes derived from various organisms may result in different yields of chemicals in the engineered bacteria





(Rad et al., 2012; Jiang et al., 2021). The downstream genes, including *crtE*, *crtI*, and *crtB*, for lycopene biosynthesis in pTer3 were replaced with those from *S. lividans*. The resultant plasmid pTer5 (Figure 3A) was transformed into *H. bluephagenesis* TD1.0 and *H. bluephagenesis* TD1.0 harboring pTer7, respectively. Notably, the transformation of pTer5 alone into *H. bluephagenesis* TD1.0 resulted in the production of red colors and 0.3 mg/g DCW lycopene (Figure 3B; Supplementary Figure 5). It was shown that the intrinsic MEP pathway of *H. bluephagenesis* contributes to the lycopene biosynthesis. The engineered TD1.0/pTer7-pTer5 also presented red colors after induction with 5.00 μM IPTG at 37°C for 48 h (Figure 3B). The lycopene yield in TD1.0/pTer7-pTer5 achieved 0.70 mg/g DCW (Figure 3C), about 3.5 times higher than that produced by TD1.0/pTer7-pTer3. These data suggested that the change in the downstream pathway genes contributes to the increase in lycopene production.

### Optimization of the promoters controlling the MVA pathway enhanced the lycopene production in *Halomonas bluephagenesis*

Lycopene production in both TD1.0/pTer7-pTer3 and TD1.0/pTer7-pTer5 seemed to tolerate IPTG induction (Figures 2D, 3C). The

decreased lycopene yield was observed with the highest IPTG treatment. We hypothesized that the dual promoters ( $P_{Mmp1}/P_{trc}$ , strong/weak) constructed in the pTer7 plasmid may disturb the expression balance of genes involved in the MVA pathway of lycopene biosynthesis in *H. bluephagenesis*. Therefore, we set out to promoter optimization. On the basis of the pTer7 plasmid, the  $P_{trc}$  promoter from *E. coli* was replaced with the phage MmpI promoter ( $P_{Mmp1}$ ) to generate pTer14 (Figure 4A top panel). After the transformation, *H. bluephagenesis* TD1.0/pTer14-pTer5 was subjected to fermentation analysis. The results demonstrated that the maximum production of lycopene in TD1.0/pTer14-pTer5 was 0.75 mg/g DCW (2.5 μM IPTG; Figure 4B), which was similar to that produced by TD1.0/pTer7-pTer5 (Figure 3C).

RT-qPCR revealed that replacing  $P_{trc}$  with  $P_{Mmp1}$  did not improve the reaction of TD1.0/pTer14-pTer5 to IPTG induction (Figure 4C). Therefore, we considered that a weak promoter combination may achieve good yields. Thus, the pTer1 plasmid that carried two  $P_{trc}$  promoters was used (Figure 4A bottom panel). After the transformation into *H. bluephagenesis* TD1.0/pTer5, the expression of *EfmvaS* gene in the engineered TD1.0/pTer1-pTer5 responded well to IPTG induction (Figure 4C). The pellet colors of TD1.0/pTer1-pTer5 increased by elevating the IPTG treatment up to 5 μM (Supplementary Figure 6). HPLC analysis showed that the maximum lycopene production in TD1.0/pTer1-pTer5 achieved 1.22 mg/g DCW (5.00 μM IPTG;

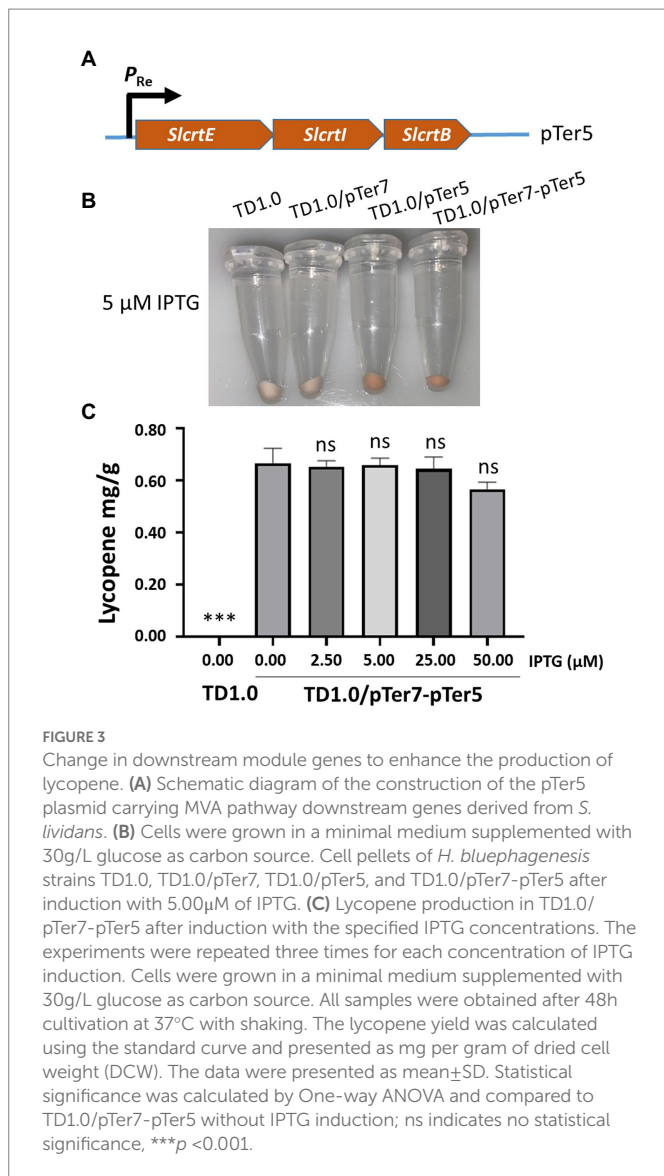


Figure 4D), approximately 1.7- and 6.1-fold higher than that from TD1.0/pTer7-pTer5 and TD1.0/pTer7-pTer3, respectively (Figures 3C, 4B). In summary, optimizing downstream gene sources and a weak promoter combination can synergistically improve lycopene production in the engineered *H. bluephagenesis*.

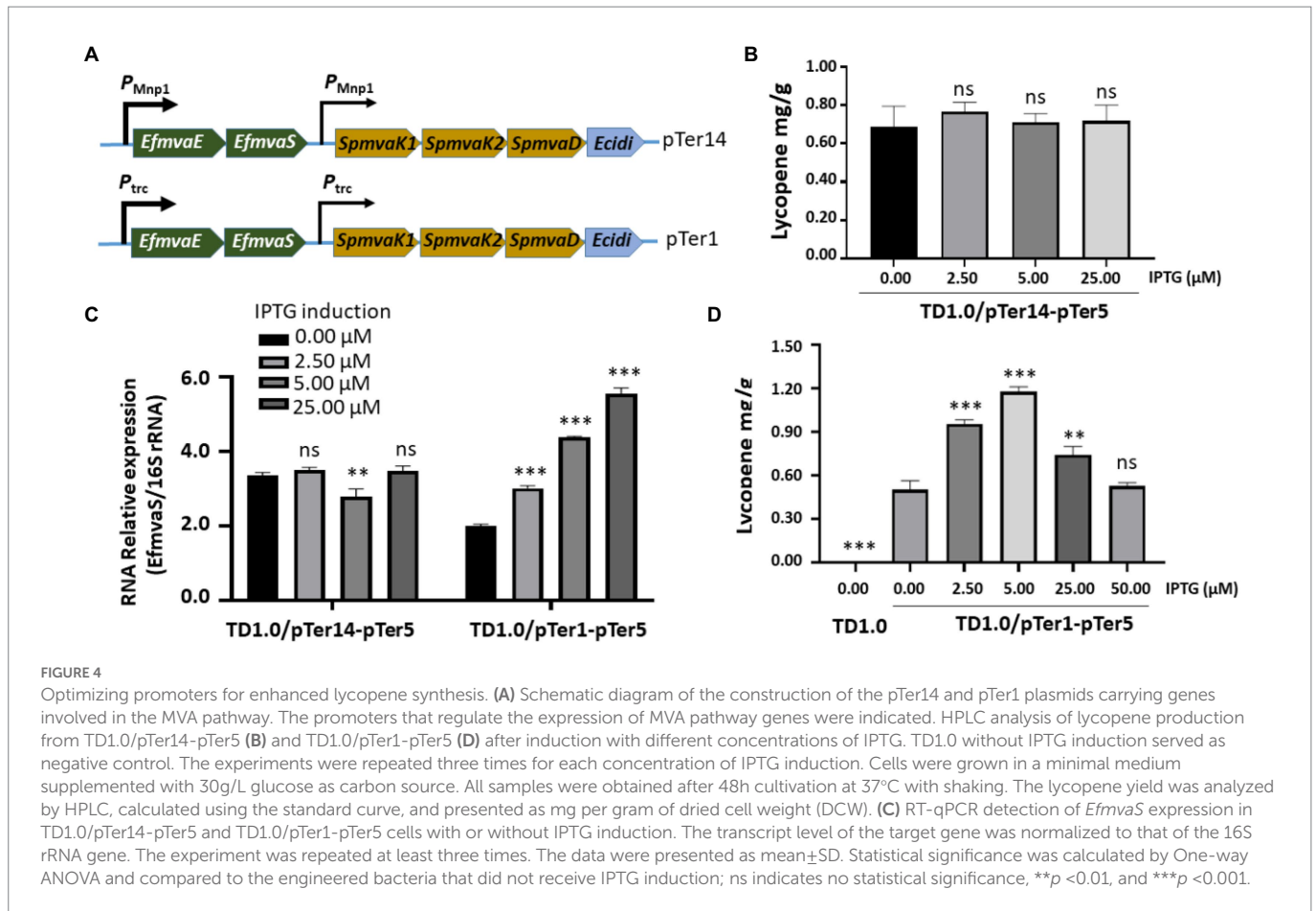
## Discussion

As an effective antioxidant, lycopene has been widely used in medicine and cosmetics (Rad et al., 2012). Metabolic engineering is a powerful approach for lycopene production with diverse microbial cell factories (Rad et al., 2012; Li et al., 2019). The MEP pathway harbored by bacteria and algae is naturally long, slightly efficient, and vaguely productive for lycopene production owing to the control mechanisms present in the native host (Martin et al., 2003). The high-efficiency MVA synthetic pathway usually carried by fungi or bacteria is attractive for manipulating metabolic engineering, resulting in varied lycopene production in diverse cell hosts (5–198 mg/g DCW, Supplementary Table 3). The introduction of the *crtE*, *crtB*, and *crtI*

genes derived from *Erwinia herbicola*, *idi* gene from *Bacillus licheniformis*, and a heterologous MVA pathway (*mvaA*, *mvaS*, *mvaD*, *mvaK1*, and *mvaK2* from *S. pneumoniae* and *phbA* from *Ralstonia eutropha*) into *E. coli* resulted in  $198 \pm 3$  mg/g DCW lycopene yield (Rad et al., 2012). However, the endotoxins and toxic enzymes with potential pathogenicity of bacterial chassis cells, such as *E. coli* and *Staphylococcus aureus*, limited their commercial production of lycopene (Yuan et al., 2018). The non-carotenogenic *H. bluephagenesis* is capable of growing at high concentrations of NaCl (60 g/L) and alkaline pH (8.5), thus, avoiding possible contamination by other microorganisms even under open unsterile conditions (Jiang et al., 2021). As a result, *H. bluephagenesis* based fermentations have reduced cost and complexity. In the present study, a heterogeneous lycopene biosynthetic pathway was generated, and metabolic optimization was performed to explore the nonpathogenic and environmentally friendly host *H. bluephagenesis* for microbial lycopene production and improvement.

An MVA pathway was heterogeneously constructed in *H. bluephagenesis* TD1.0. The results demonstrated that the engineered *H. bluephagenesis* could produce a certain amount of lycopene (Figure 2). In our preliminary design, the downstream genes of the lycopene biosynthetic pathway were obtained from *S. avivatus*, and the resultant strain TD1.0/pTer7-pTer3 only produced 0.2 mg/g of lycopene. The genes involved in lycopene biosynthesis among microorganisms are abundant. Their activities may vary in diverse sources and chassis hosts (Singh and Goyal, 2008; Reynaud et al., 2011). Replacing the downstream genes in plasmid pTer3 with those from *S. lividans* increased lycopene production by nearly three times (Figure 3C). On the basis of pTer7 with a promoter combination of  $P_{Mmp1}$  and  $P_{trc}$  (strong/weak), we found that the lycopene yield in TD1.0/pTer7-pTer3 or TD1.0/pTer7-pTer5 without IPTG induction was comparable with that of the bacteria treated with different IPTG concentrations (Figures 2D, 3C). Similar results were observed in the case of plasmid pTer14 that carried  $P_{Mmp1}$  and  $P_{Mmp1}$  promoter combination (strong/strong; Figure 4B). The reasons for this phenomenon were unclear. One possible explanation is that a certain leakage expression of the strong  $P_{Mmp1}$  promoter occurs in the host *H. bluephagenesis* TD1.0. The RT-qPCR results revealed that the expression level of the *EfmvaS* gene under the control of  $P_{Mmp1}$  in TD1.0/pTer14-pTer5 without IPTG treatment was similar to that in IPTG-induced bacteria (Figure 4C). Increasing the promoter strength may also lead to the enhancement of bacterial metabolic pressure or disturbance of host metabolic balance (Ruther et al., 1997). Considering the effect of the strength promoter, we tested whether a weak promoter combination can reverse the IPTG-induced reaction. As expected, the two  $P_{trc}$  promoters (weak/weak combination) carrying pTer1 plasmid in TD1.0/pTer1-pTer5 responded well to the IPTG induction (Figure 4C). The lycopene production increased along with the elevation of IPTG concentrations to 5.00 μM. Thereafter, it decreased for both 25.00 and 50.00 μM of inducer (Figure 4D). These data suggested that the increase in promoter strength may not consistently achieve a high level of chemical production. Moreover, a suitable promoter combination is important and should be investigated further.

In conclusion, the heterogeneous MVA pathway was constructed in *H. bluephagenesis* to enable lycopene production. The change in downstream gene sources involved in the lycopene biosynthetic pathway and optimization of weak/weak promoter combination could



synergistically promote lycopene production to 1.22 mg/g DCW in our experimental condition. In our study, a novel primary *Halomonas* host is provided for further metabolic engineering operations, such as MVA pathway optimization and by-pass pathway block, which will be further investigated in the near future.

## Data availability statement

The original contributions presented in the study are included in the article/Supplementary material, further inquiries can be directed to the corresponding authors.

## Author contributions

X-RJ and XR designed the study, interpreted the data, and revised the manuscript. QS acquired the data and prepared the manuscript. QS, PC, JS, and YuZ conceived the study and acquired the data. YaZ analyzed and interpreted the data. X-RJ supervised the project and obtained funding. All authors contributed to the article and approved the submitted version.

## Funding

This work was supported by the National Natural Science Foundation of China (grant nos. 32171415 and 31900045).

## Acknowledgments

We thank Guo-Qiang Chen for the gift of TD1.0 strain and related genomic sequencing information. The pSEVA plasmids were gifts from Victor de Lorenzo of CSIC, Spain.

## Conflict of interest

The authors declare that the research was conducted in the absence of any commercial or financial relationships that could be construed as a potential conflict of interest.

## Publisher's note

All claims expressed in this article are solely those of the authors and do not necessarily represent those of their affiliated organizations, or those of the publisher, the editors and the reviewers. Any product that may be evaluated in this article, or claim that may be made by its manufacturer, is not guaranteed or endorsed by the publisher.

## Supplementary material

The Supplementary material for this article can be found online at: <https://www.frontiersin.org/articles/10.3389/fmicb.2022.1100745/full#supplementary-material>

## References

- Aghajanzpour, M., Nazer, M. R., Obeidavi, Z., Akbari, M., Ezati, P., and Kor, N. M. (2017). Functional foods and their role in cancer prevention and health promotion: a comprehensive review. *Am. J. Cancer Res.* 7, 740–769.
- Andrews, A. G., Phaff, H. J., and Starr, M. P. (1976). Carotenoids of *Phaffia rhodozyma*, a red-pigmented fermenting yeast. *Phytochemistry* 15, 1003–1007. doi: 10.1016/S0031-9422(00)84390-3
- Bloch, K., Chaykin, S., Phillips, A. H., and de Waard, A. (1959). Mevalonic acid pyrophosphate and isopentenylpyrophosphate. *J. Biol. Chem.* 234, 2595–2604. doi: 10.1002/jbmt.390010408
- Cunningham, F. X., Sun, Z., Chamovitz, D., Hirschberg, J., and Gantt, E. (1994). Molecular structure and enzymatic function of lycopene cyclase from the cyanobacterium *Synechococcus sp.* strain PCC7942. *Plant Cell* 6, 1107–1121. doi: 10.1105/tpc.6.8.1107
- Ernst, H. (2002). Recent advances in industrial carotenoid synthesis. *Pure Appl. Chem.* 74, 1369–1382. doi: 10.1134/S0040601507050138
- Gibson, D. G., Young, L., Chuang, R. Y., Venter, J. C., Hutchison, C. A., and Smith, H. O. (2009). Enzymatic assembly of DNA molecules up to several hundred kilobases. *Nat. Methods* 6, 343–345. doi: 10.1038/nmeth.1318
- Grether-Beck, S., Marini, A., Jaenicke, T., Stahl, W., and Krutmann, J. (2017). Molecular evidence that oral supplementation with lycopene or lutein protects human skin against ultraviolet radiation: results from a double-blinded, placebo-controlled, cross-over study. *Br. J. Dermatol.* 176, 1231–1240. doi: 10.1111/bjd.15080
- Hernandez-Arnanz, S., Perez-Gil, J., Marshall-Sabey, D., and Rodriguez-Concepcion, M. (2019). Engineering *Pseudomonas putida* for isoprenoid production by manipulating endogenous and shunt pathways supplying precursors. *Microb. Cell Fact.* 18:152. doi: 10.1186/s12934-019-1204-z
- Jervis, A. J., Carbonell, P., Vinaixa, M., Dunstan, M. S., Hollywood, K. A., Robinson, C. J., et al. (2019). Machine learning of designed translational control allows predictive pathway optimization in *Escherichia coli*. *ACS Synth. Biol.* 8, 127–136. doi: 10.1021/acssynbio.8b00398
- Jiang, X. R., Yan, X., Yu, L. P., Liu, X. Y., and Chen, G. Q. (2021). Hyperproduction of 3-hydroxypropionate by *Halomonas bluephagenesis*. *Nat. Commun.* 12:1513. doi: 10.1038/s41467-021-21632-3
- Kim, S. W., and Keasling, J. (2001). Metabolic engineering of the nonmevalonate isopentenyl diphosphate synthesis pathway in *Escherichia coli* enhances lycopene production. *Biotechnol. Bioeng.* 72, 408–415. doi: 10.1002/1097-0290(20000220)72:4<408::aid-bit1003>3.0.co;2-h
- Li, M., Nian, R., Xian, M., and Zhang, H. (2018). Metabolic engineering for the production of isoprene and isopentenol by *Escherichia coli*. *Appl. Microbiol. Biotechnol.* 102, 7725–7738. doi: 10.1007/s00253-018-9200-5
- Li, X., Wang, Z., Zhang, G., and Yi, L. (2019). Improving lycopene production in *Saccharomyces cerevisiae* through optimizing pathway and chassis metabolism. *Chem. Eng. Sci.* 193, 364–369. doi: 10.1016/j.ces.2018.09.030
- Ma, T., Deng, Z., and Liu, T. (2016). Microbial production strategies and applications of lycopene and other terpenoids. *World J. Microbiol. Biotechnol.* 32:15. doi: 10.1007/s11274-015-1975-2
- Ma, T., Shi, B., Ye, Z., Li, X., Liu, M., Chen, Y., et al. (2019). Lipid engineering combined with systematic metabolic engineering of *Saccharomyces cerevisiae* for high-yield production of lycopene. *Metab. Eng.* 52, 134–142. doi: 10.1016/j.ymben.2018.11.009
- Ma, Y. R., Wang, K. F., Wang, W. J., Ding, Y., Shi, T. Q., Huang, H., et al. (2019). Advances in the metabolic engineering of *Yarrowia lipolytica* for the production of terpenoids. *Bioresour. Technol.* 281, 449–456. doi: 10.1016/j.biortech.2019.02.116
- Manachini, P. L., and Fortina, M. G. (1998). Production in sea-water of thermostable alkaline proteases by a halotolerant strain of *Bacillus licheniformis*. *Biotechnol. Lett.* 20, 565–568. doi: 10.1023/A:1005349728182
- Martin, V. J., Pitera, D. J., Withers, S. T., Newman, J. D., and Keasling, J. D. (2003). Engineering a mevalonate pathway in *Escherichia coli* for production of terpenoids. *Nat. Biotechnol.* 21, 796–802. doi: 10.1038/nbt833
- Moise, A. R., Al-Babili, S., and Wurtzel, E. T. (2014). Mechanistic aspects of carotenoid biosynthesis. *Chem. Rev.* 114, 164–193. doi: 10.1021/cr400106y
- Müller, L., Caris-Veyrat, C., Lowe, G., and Böhm, V. (2016). Lycopene and its antioxidant role in the prevention of cardiovascular diseases—a critical review. *Crit. Rev. Food Sci.* 56, 1868–1879. doi: 10.1080/10408398.2013.801827
- Rad, S. A., Zahiri, H. S., Noghabi, K. A., Rajaei, S., Heidari, R., and Mojallali, L. (2012). Type 2 IDI performs better than type 1 for improving lycopene production in metabolically engineered *E. coli* strains. *World J. Microbiol. Biotechnol.* 28, 313–321. doi: 10.1007/s11274-011-0821-4
- Reynaud, E., Aydemir, G., Ruehl, R., Dangles, O., and Caris-Veyrat, C. (2011). Organic synthesis of new putative lycopene metabolites and preliminary investigation of their cell-signaling effects. *J. Agric. Food Chem.* 59, 1457–1463. doi: 10.1021/jf104092e
- Rohmer, M., Knani, M., Simonin, P., Sutter, B., and Sahm, H. (1993). Isoprenoid biosynthesis in bacteria: a novel pathway for the early steps leading to isopentenyl diphosphate. *Biochem. J.* 295, 517–524. doi: 10.1042/bj2950517
- Ruther, A., Misawa, N., Boger, P., and Sandmann, G. (1997). Production of zeaxanthin in *Escherichia coli* transformed with different carotenogenic plasmids. *Appl. Microbiol. Biotechnol.* 48, 162–167. doi: 10.1007/s00253005103
- Saini, R. K., and Keum, Y. S. (2018). Carotenoid extraction methods: a review of recent developments. *Food Chem.* 240, 90–103. doi: 10.1016/j.foodchem.2017.07.099
- Sharma, S. K., Gautam, N., Atri, N. S., and Dhancholia, S. (2016). Taxonomical establishment and compositional studies of a new *Cordyceps* (*Ascomycetes*) species from the Northwest Himalayas (India). *Int. J. Med. Mushrooms* 18, 1121–1130. doi: 10.1615/IntJMedMushrooms.v18.i12.70
- Shi, J., and Le Maguer, M. (2000). Lycopene in tomatoes: chemical and physical properties affected by food processing. *Crit. Rev. Biotechnol.* 20, 293–334. doi: 10.1080/07388550091144212
- Simon, R. (1984). High frequency mobilization of gram-negative bacterial replicons by the in vitro constructed Tn5-mob transposon. *Mol. Gen. Genet.* 196, 413–420. doi: 10.1007/BF00436188
- Singh, P., and Goyal, G. K. (2008). Dietary lycopene: its properties and anticarcinogenic effects. *Compr. Rev. Food Sci. Food Saf.* 7, 255–270. doi: 10.1111/j.1541-4337.2008.00044.x
- Sun, T., Miao, L., Li, Q., Dai, G., Lu, F., Liu, T., et al. (2014). Production of lycopene by metabolically-engineered *Escherichia coli*. *Biotechnol. Lett.* 36, 1515–1522. doi: 10.1007/s10529-014-1543-0
- Wang, G. S., Grammel, H., Abou-Aisha, K., Sägeser, R., and Ghosh, R. (2012). High-level production of the industrial product lycopene by the photosynthetic bacterium *Rhodospirillum rubrum*. *Appl. Environ. Microbiol.* 78, 7205–7215. doi: 10.1128/AEM.00545-12
- Wang, H. B., He, F., Lu, M. B., Zhao, C. F., Xiong, L., and Yu, L. J. (2014). High-quality lycopene overaccumulation via inhibition of  $\gamma$ -carotene and ergosterol biosyntheses in *Blakeslea trispora*. *J. Funct. Foods* 7, 435–442. doi: 10.1016/j.jff.2014.01.014
- Yan, Z., Nambou, K., Wei, L., Cao, J., and Qiang, H. (2013). Lycopene production in recombinant strains of *Escherichia coli* is improved by knockout of the central carbon metabolism gene coding for glucose-6-phosphate dehydrogenase. *Biotechnol. Lett.* 35, 2137–2145. doi: 10.1007/s10529-013-1317-0
- Yang, J., Zhao, G., Sun, Y., Zheng, Y., Jiang, X., Liu, W., et al. (2012). Bio-isoprene production using exogenous MVA pathway and isoprene synthase in *Escherichia coli*. *Bioresour. Technol.* 104, 642–647. doi: 10.1016/j.biortech.2011.10.042
- Yin, J., Fu, X. Z., Wu, Q., Chen, J. C., and Chen, G. Q. (2014). Development of an enhanced chromosomal expression system based on porin synthesis operon for halophile *Halomonas sp.* *Appl. Microbiol. Biotechnol.* 98, 8987–8997. doi: 10.1007/s00253-014-5959-1
- Yuan, J., Yang, J., Hu, Z., Yang, Y., Shang, W., Hu, Q., et al. (2018). Safe staphylococcal platform for the development of multivalent nanoscale vesicles against viral infections. *Nano Lett.* 18, 725–733. doi: 10.1021/acs.nanolett.7b03893
- Zhao, H., Zhang, H. M., Chen, X., Li, T., Wu, Q., Ouyang, Q., et al. (2017). Novel T7-like expression systems used for *Halomonas*. *Metab. Eng.* 39, 128–140. doi: 10.1016/j.ymben.2016.11.007