



# Bacterial Manipulation of the Integrated Stress Response: A New Perspective on Infection

Alex Knowles, Susan Campbell, Neil Cross and Prachi Stafford\*

Biomolecular Sciences Research Centre, Department of Biosciences and Chemistry, Faculty of Health and Wellbeing, Sheffield Hallam University, Sheffield, United Kingdom

Host immune activation forms a vital line of defence against bacterial pathogenicity. However, just as hosts have evolved immune responses, bacteria have developed means to escape, hijack and subvert these responses to promote survival. In recent years, a highly conserved group of signalling cascades within the host, collectively termed the integrated stress response (ISR), have become increasingly implicated in immune activation during bacterial infection. Activation of the ISR leads to a complex web of cellular reprogramming, which ultimately results in the paradoxical outcomes of either cellular homeostasis or cell death. Therefore, any pathogen with means to manipulate this pathway could induce a range of cellular outcomes and benefit from favourable conditions for long-term survival and replication. This review aims to outline what is currently known about bacterial manipulation of the ISR and present key hypotheses highlighting areas for future research.

**Keywords:** bacteria, ISR, eIF2alpha, infection, immunity, stress

## OPEN ACCESS

### Edited by:

Ludovic Tailleux,  
Institut Pasteur, France

### Reviewed by:

Leticia A. Carneiro,  
Federal University of Rio de Janeiro,  
Brazil

Kurt Schesser,  
University of Miami, United States

### \*Correspondence:

Prachi Stafford  
p.stafford@shu.ac.uk

### Specialty section:

This article was submitted to  
Microbial Immunology,  
a section of the journal  
Frontiers in Microbiology

**Received:** 22 December 2020

**Accepted:** 16 February 2021

**Published:** 22 April 2021

### Citation:

Knowles A, Campbell S, Cross N  
and Stafford P (2021) Bacterial  
Manipulation of the Integrated Stress  
Response: A New Perspective on  
Infection.  
*Front. Microbiol.* 12:645161.  
doi: 10.3389/fmicb.2021.645161

## INTRODUCTION

The relationship between microbes and hosts has shaped almost every aspect of microbial and mammalian evolution. This association is formed through an extensive series of interactions, some of which are beneficial, whilst others pose pathogenic threat. The immune system, consisting of innate and adaptive or acquired immunity, is a highly complex network enabling the human body to detect and determine the fate of foreign entities (Nicholson, 2016). During the first line of defence against pathogens, the host cell utilises the innate immune system to activate extensive signalling cascades in a concerted effort to defend against pathogenicity. These include activation of host pattern recognition receptors such as toll-like receptors (TLRs; Wright et al., 1989; Hoshino et al., 1999; Kumar et al., 2009) and Nod-like receptors (Opitz et al., 2005; Hasegawa et al., 2006), which detect structural bacterial features, termed pathogen-associated molecular patterns (Lai and Gallo, 2008; Davis et al., 2011). The resulting induction of pro-inflammatory cytokines enables host cells to initiate both intracellular and extracellular mechanisms to protect the cell and surrounding tissues (Lai and Gallo, 2008; Davis et al., 2011). These result in inflammation and the subsequent activation of macrophage- and neutrophil-mediated bacterial clearance at the infection site (Zhou et al., 2019). In some cases, autophagic responses are also triggered to remove foreign bacteria, such as *Salmonella* (Wild et al., 2011), with the host cells internalising the bacterium into double-membraned vesicles, termed autophagosomes, which are subsequently targeted for lysosomal degradation, thereby removing the foreign bacterium (Bah and Vergne, 2017).

To evade host-mediated innate immune responses, bacterial pathogens are also constantly evolving and developing mechanisms to ensure persistence within host cells and gain evolutionary success. Such mechanisms include antigenic variation (Saunders, 1990), inhibition of the humoral immune response by recruitment of complement inhibitors (Meri et al., 2013), direct interaction with complement components (Amdahl et al., 2013), evasion of autophagic responses (Ogawa et al., 2005), and residing in immune-privileged sites (Young et al., 2002). These strategies ultimately allow the bacteria to avoid detection and induce conditions favourable for bacterial survival and successful proliferation (Young et al., 2002).

In recent years, a group of highly conserved cellular pathways, collectively termed the integrated stress response (ISR), has gained increased interest in relation to host–pathogen interactions (Pakos-Zebrucka et al., 2016). The ISR, which can respond to a variety of stimuli, has been implicated in controlling the tight balance between cellular survival and death during adverse conditions, with a body of evidence implicating cross-talk between the ISR and viruses, forming a key mechanism of viral pathogenesis (Rabouw et al., 2020). The aim of this review is to explore to what extent bacteria have exploited these stress response pathways to overcome cell defences. Given that the ISR functions as a master regulator of cellular fate, understanding to what end bacteria can manipulate these pathways will allow for a better understanding of their disease pathology. Furthermore, as antibiotic resistance is on the increase, a better understanding of these host–microbe interactions may help identify novel candidate therapeutic targets.

## THE INTEGRATED STRESS RESPONSE

Within eukaryotic cells, the ISR is a mechanism that, in response to changes in either intracellular or extracellular conditions, has the capability of switching between cellular survival or inducing cell death by triggering a range of signalling cascades (reviewed by Pakos-Zebrucka et al., 2016). Stimuli can include both physiological and pathological changes and once triggered results in the reduction of global protein synthesis, allowing the cell to focus energy into overcoming stress (Brostrom and Brostrom, 1997) mediated via the phosphorylation of eukaryotic translation initiation factor 2 alpha (eIF2 $\alpha$ ; Siekierka et al., 1982; Donnelly et al., 2013; **Figures 1A–C**). However, during ISR activation, there is also increased translation of a selection of stress response mRNAs via non-canonical translation (Ryoo and Vasudevan, 2017). This includes mRNAs coding for transcription factors, such as activating transcription factor 4 (ATF4), C/EBP homologous protein (CHOP), and growth arrest and DNA damage-inducible protein (GADD34), which act as effectors of the ISR (Lee et al., 2009; Palam et al., 2011; Hinnebusch and Lorsch, 2012) specifically upregulating the expression of genes involved in cellular reprogramming under stress conditions (Karpinski et al., 1992; Harding et al., 2003; B'chir et al., 2013; **Figures 1D,E**).

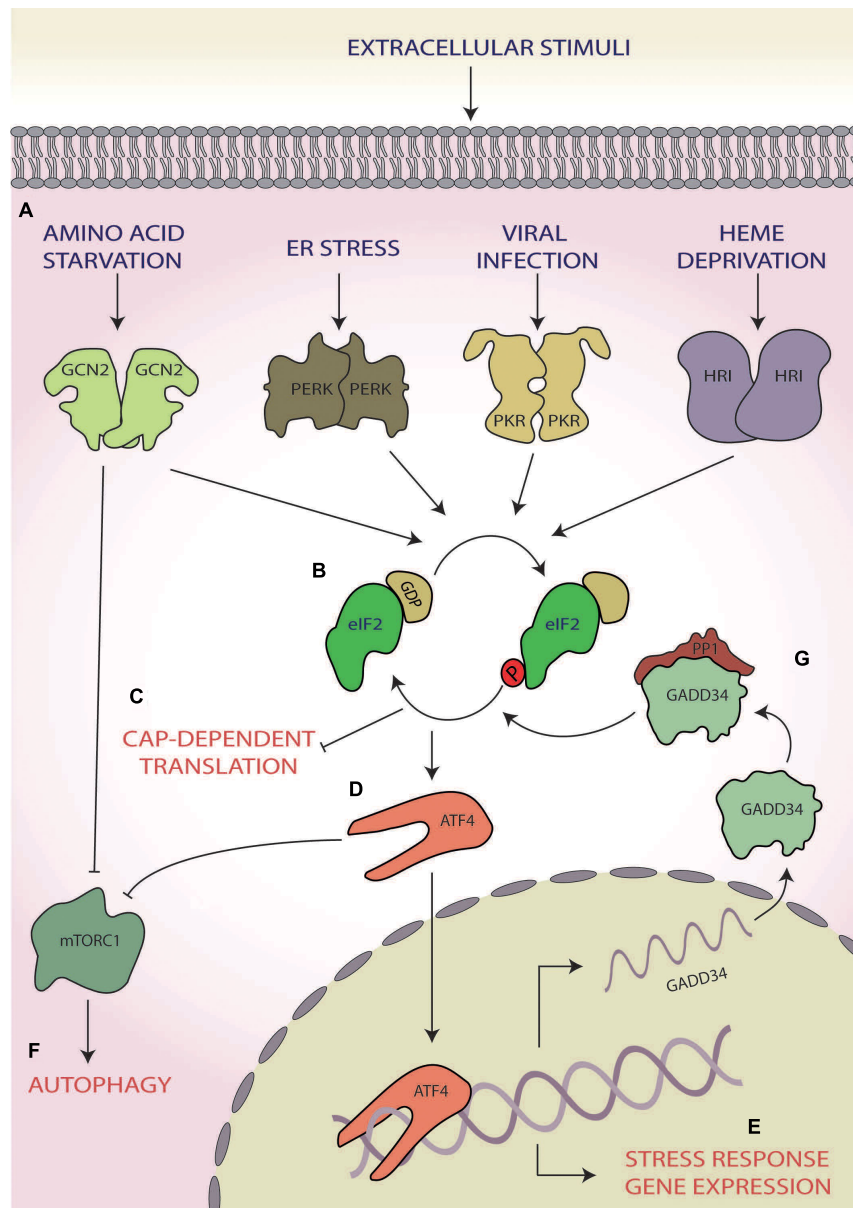
Of the ISR effectors, ATF4, a basic leucine zipper transcription factor, is the best studied (Karpinski et al., 1992;

Vallejo et al., 1993; Ameri and Harris, 2008). Once activated, ATF4 regulates the expression of genes involved in stress responses, amino acid (AA) synthesis, metastasis, angiogenesis and differentiation, allowing for a stress-specific cellular response (Ameri and Harris, 2008). During hypoxia, endoplasmic reticulum (ER) stress, and AA starvation, ATF4 also upregulates transcripts involved in autophagy (Rzyski et al., 2010; B'chir et al., 2013; Deegan et al., 2015). One mechanism by which this is achieved is the inhibition of mammalian target of rapamycin (mTOR) complex 1 (mTORC1) via translational upregulation of regulated in development and DNA-damage response 1, which functions to activate autophagic responses (Whitney et al., 2009; Kroemer et al., 2010; Dennis et al., 2013; **Figures 1D,F**).

Through the action of ATF4, the ISR can induce cell death via upregulation of downstream targets including the transcription factors CHOP and ATF3 (Puthalakath et al., 2007). One mechanism for this function is via CHOP increasing the expression of additional pro-apoptotic factors from the Bcl-2 homology 3-only group of the Bcl-2 family (Puthalakath et al., 2007; Galehdar et al., 2010). It has also been suggested that ATF4 and CHOP may interact directly to form heterodimers to heighten the expression of pro-apoptotic genes, such as Bim (Teske et al., 2013).

However, the ISR can also induce cellular survival and overcome the stress. In this case, upon cessation of stress, GADD34 activates protein phosphatase 1 (PP1), which dephosphorylates eIF2 $\alpha$  (Connor et al., 2001; Novoa et al., 2001), thus terminating the ISR and returning the cell to homeostatic translation (**Figure 1G**; Novoa et al., 2001, 2003). As such, the ISR can induce the directly opposing outcomes of cellular survival or death.

Whilst the ISR can be initiated by multiple stimuli (e.g. AA starvation, ER stress, viral infection, and heme deprivation), the point of convergence of this response hinges upon the abrogation of canonical translation initiation via the phosphorylation of eIF2 $\alpha$  at serine 51 (Siekierka et al., 1982; Donnelly et al., 2013; **Figure 1**). During homeostatic translation initiation, eIF2 in its active-GTP bound form associates with the initiator methionyl tRNA (tRNA $_i^{Met}$ ) to form a ternary complex. Upon AUG recognition, the tRNA $_i^{Met}$  is released, and eIF2-GTP is hydrolysed to eIF2-GDP (Hinnebusch and Lorsch, 2012). To enable subsequent rounds of translation, eIF2-GTP is regenerated by the guanine nucleotide exchange factor (GEF) eIF2B (Price and Proud, 1994; Jennings et al., 2013). The activation of the ISR and the subsequent phosphorylation of eIF2 $\alpha$  at serine 51 block eIF2B GEF activity and result in a deficit of cellular eIF2-GTP and subsequently the ternary complex (Kenner et al., 2019), leading to the shutdown of most mRNA transcripts (**Figures 1B,C**). Some of these stalled complexes of translational machinery and transcripts consisting of both proteins and RNAs are sequestered into dynamic, phase dense, cytoplasmic foci termed stress granules (Nover et al., 1989; Anderson and Kedersha, 2002). Stress granules can form within minutes and dissolve at a similar pace upon stress cessation (Kedersha et al., 2000). Due to their dynamic nature, they require ongoing retrograde transport of stalled translational machinery along functioning microtubules (Loschi et al., 2009). Functionally, stress granules play a key role



**FIGURE 1 |** The integrated stress response (ISR). **(A)** A range of cellular stress stimuli activate one of four stress response kinases, general control non-depressible 2 (GCN2), protein kinase R-like endoplasmic reticulum (ER) kinase (PERK), protein kinase R (PKR), and heme-regulated inhibitor HRI kinases, which **(B)** phosphorylate eukaryotic initiation factor 2 alpha (eIF2 $\alpha$ ). **(C)** This results in abrogation of canonical translation initiation, **(D)** which selectively upregulates the translation of ISR effector mRNAs, such as activating transcription factor 4 (ATF4). **(E)** These effectors bind to and target genes involved in cellular reprogramming for expression. **(F)** GCN2 and ATF4 also both induce autophagy via inhibition of mammalian target of rapamycin complex 1 (mTORC1). **(G)** If stress is overcome, the stress-inducible phosphatase growth arrest and DNA damage-inducible protein (GADD34) dephosphorylates eIF2 $\alpha$ , returning homeostatic translation initiation and terminating the ISR.

in allowing molecules to be sorted for storage, degradation or for re-initiation of translation, thereby allowing for rapid sorting of transcripts once homeostasis is returned (Nover et al., 1989; Anderson and Kedersha, 2002).

To enact the core function of the ISR, eIF2 $\alpha$  phosphorylation is mediated by a family of four serine/threonine stress response kinases (Wek et al., 2006). Whilst all four kinases share significant sequence similarity in their kinase domain

(Donnelly et al., 2013), each contains a unique regulatory domain, allowing for differential regulation via distinct stressors (Meurs et al., 1990; Chen et al., 1991; Berlanga et al., 1998; Shi et al., 1998; Dong et al., 2000; Harding et al., 2000; Rafie-Kolpin et al., 2000). Protein kinase double-stranded RNA-dependent (PKR) also known as EIF2AK2 classically responds to double-stranded RNA generated during viral infections (Clemens and Elia, 1997). PRK has also been found to respond to oxidative

and ER stress as well as cytokine signalling and reactive oxygen species (ROS; Cheshire et al., 1999; Ito et al., 1999; Ruvolo et al., 2001; Onuki et al., 2004; Nakamura et al., 2010; Anda et al., 2017). The protein kinase R-like ER kinase (PERK, EIF2AK3) forms one arm of a larger three-armed response to misfolded proteins in the ER, collectively termed the unfolded protein response (UPR; Walter and Ron, 2011). It is typically activated by ER stress, brought on by the accumulation of misfolded proteins in the ER lumen (Harding et al., 2000; Walter and Ron, 2011) and by changes to ATP and  $\text{Ca}^{2+}$  in the ER independently of misfolded proteins (Sanderson et al., 2010). PERK can also be activated by oxidative stress and hypoxia (Koumenis et al., 2002; Harding et al., 2003). General control non-depressible 2 (GCN2, EIF2AK4), the most highly conserved eIF2 $\alpha$  kinase (Yang et al., 2000; Donnelly et al., 2013), is activated primarily by AA starvation (Wek et al., 1995) but can also be activated by ROS, viral infection and UV radiation (Berlenga et al., 2006; Grallert and Boye, 2007; Pyo et al., 2008). Heme-regulated inhibitor (HRI; EIF2AK1), a kinase mainly associated with protection against toxic globin aggregates in erythroid cells, is involved in protection against ROS induced by sodium arsenite as well as proteasome inhibition (Han et al., 2001; Lu et al., 2001; McEwen et al., 2005; Chen, 2007; Yerlikaya and DoKudur, 2008). Interestingly, to date, bacterial pathogens have been shown to activate all kinases with the exception of the viral specific kinase, PKR (Tattoli et al., 2012; Tsutsuki et al., 2016; Abdel-Nour et al., 2019).

## BACTERIAL MANIPULATION OF THE INTEGRATED STRESS RESPONSE

In recent years, it has become apparent that the ISR forms an integral part of the host innate immune response to pathogens (reviewed by Rodrigues et al., 2018). This is supported by studies showing that pathogens can induce eIF2 $\alpha$  phosphorylation via PERK, GCN2 and HRI (Tattoli et al., 2012; Tsutsuki et al., 2016; Abdel-Nour et al., 2019). Given that the ISR plays a crucial role in controlling cellular fate during stress (Costa-Mattioli and Walter, 2020), pathogens with means to dampen or hijack the ISR pathway are likely able to influence cellular signalling and ultimately benefit from long-term survival and promote persistence of infection. Indeed, it is well-documented that viruses manipulate specific elements of the ISR during infection. Hepatitis C virus, Japanese encephalitis virus and human cytomegalovirus directly inhibit the viral specific eIF2 $\alpha$  kinase PKR (Toroney et al., 2010; Tu et al., 2012; Ziehr et al., 2016), and Kaposi's sarcoma-associated virus indirectly inhibits PKR via inhibition of its activator PACT (Sharma et al., 2017). Another point of ISR modulation displayed by viruses is to dampen eIF2 $\alpha$  phosphorylation. Junin virus directly inhibits eIF2 $\alpha$  (Linero et al., 2011), and hepatitis C virus activates GADD34 to dephosphorylate eIF2 $\alpha$  during stress (Ruggieri et al., 2012).

However, recent evidence suggests that some bacterial species might also be manipulating the host ISR, inducing a variety of cellular outcomes. This review will focus on how five

bacterial model organisms, Shiga toxin-producing *Escherichia coli*, *Shigella flexneri*, *Salmonella enterica* serovar Typhimurium, *Pseudomonas aeruginosa*, and *Porphyromonas gingivalis* can manipulate specific components of the ISR to gain control over cellular fate and immune signalling, creating an environment favouring bacterial viability, replication, and infection.

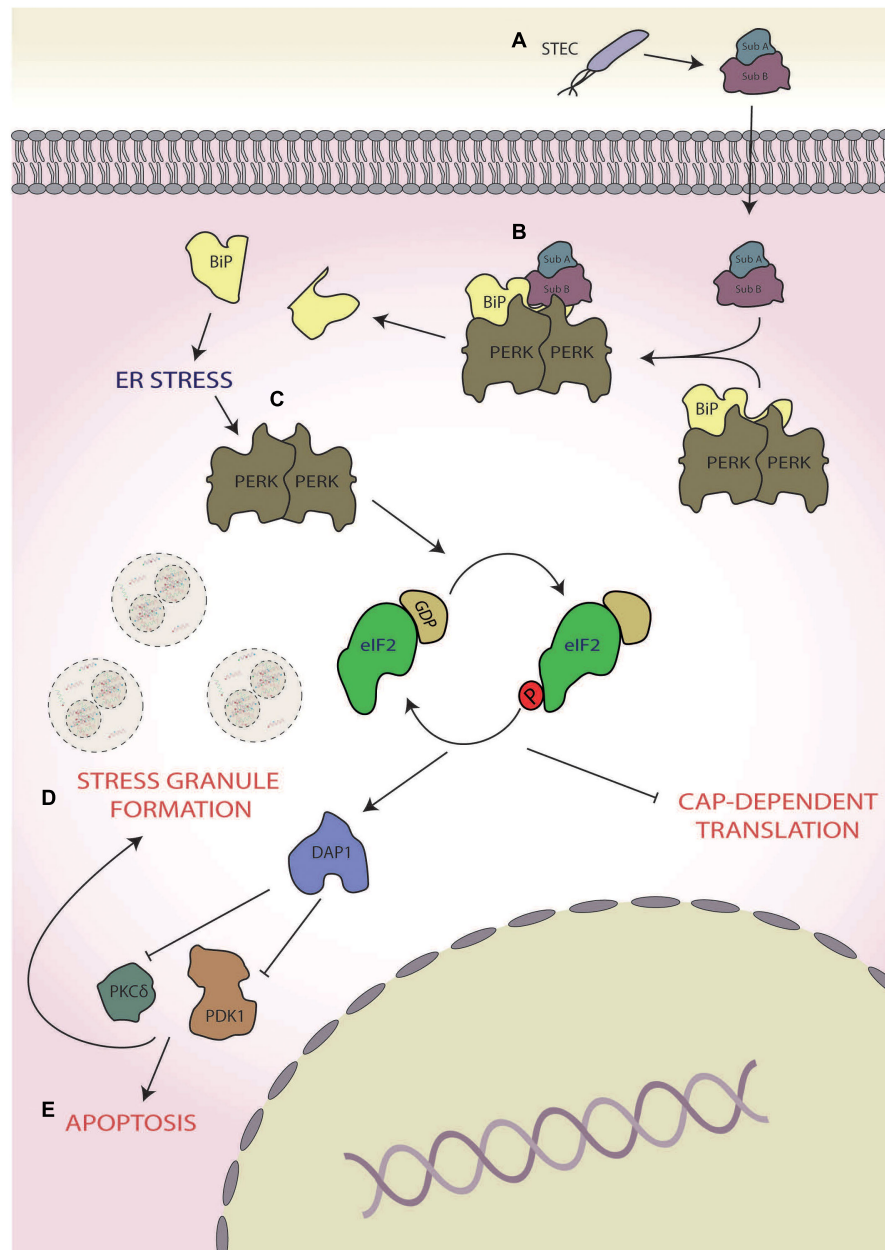
### Shiga Toxin-Producing *Escherichia coli*

Shiga toxin-producing *E. coli* O157:H7 (STEC) is a widespread pathogen presenting severe risk to human health, causing haemorrhagic colitis and haemolytic uremic syndrome (Riley et al., 1983; Ko et al., 2016). Annually, the prevalence of acute STEC infection is thought to be ~2.8 million cases worldwide, with infection progressing to HUS in 3,890 cases and resulting in death in 230 cases (Majowicz et al., 2014).

Virulent strains of STEC have been shown to target the ISR to induce host cell death mediated via a secreted virulence factor termed subtilase cytotoxin (SubAB; Tsutsuki et al., 2016; **Figure 2A**). SubAB is a secreted toxin consisting of two subunits; the B subunit binds the host extracellular toxin receptor and facilitates toxin internalisation, whereas the A subunit is a serine protease, which, in conjunction with the B subunit, facilitates the intracellular virulent effects of the pathogen (Morinaga et al., 2007). The main target of SubAB is the cleavage of the PERK chaperone binding immunoglobulin protein (BiP; **Figure 2B**), resulting in the dimerisation and activation of PERK, inducing eIF2 $\alpha$  phosphorylation (Tsutsuki et al., 2016; **Figure 2C**). ISR activation triggered in this manner causes stress granule formation, which is dependent upon death-associated protein 1 activation (Tsutsuki et al., 2016). Inhibition of protein kinase C  $\delta$  (PKC $\delta$ ) and phosphoinositide-dependent kinase 1 (PDK1) are implicated in the formation of these stress granules, as chemical inhibition of both also heightens stress granule formation in response to SubAB (Tsutsuki et al., 2016). Furthermore, death-associated protein 1 knockdown increased basal levels of phospho-PDK1(S196), thereby inhibiting stress granule formation, further implicating PKD1 inhibition in formation of stress granules in response to SubAB (Tsutsuki et al., 2016; **Figure 2D**). Interestingly, in rat intestinal epithelioid cells, PDK1 has been shown to inhibit cell death in response to  $\text{H}_2\text{O}_2$  (Song et al., 2009). Therefore, the inhibition of PDK1 coupled with prolonged PERK activation (Lin et al., 2009), which is known to promote apoptosis, may push the host cell towards death (**Figure 2E**; Lin et al., 2009; Tsutsuki et al., 2016). In contrast, in human lung cancer cells, PKC $\delta$  activation induces cell death via the CHOP-ATF3 arm of the ISR (Xu et al., 2012). Hence, the exact role PKC $\delta$  inhibition by SubAB in cell death requires further attention. Although driving the host cell towards death may seem counterproductive for bacterial survival, it is thought that Shiga-toxic *E. coli* displays altruism (Loš et al., 2012); in this context, ISR-mediated destruction of host cell and internalised bacteria could provide nutrients to the wider STEC community.

### *Shigella flexneri*

*Shigella* is a genus of gram-negative, facultative anaerobic bacteria that primarily infect the gastrointestinal tract, causing



**FIGURE 2** | Shiga toxin-producing *Escherichia coli* (STEC). **(A)** During infection, STEC secretes subtilase cytotoxin (subAB), **(B)** which cleaves protein kinase R-like endoplasmic reticulum (ER) kinases (PERKs) chaperone binding immunoglobulin protein (BiP), and **(C)** leading to the activation of PERK and subsequent phosphorylation of eukaryotic initiation factor 2 alpha (eIF2 $\alpha$ ). **(D)** This results in the formation of stress granules in a manner dependent on death-associated protein 1 (DAP1) activation of phosphoinositide-dependent kinase 1 (PDK1) and protein kinase C  $\delta$  (PKC $\delta$ ). **(E)** pushing the cell towards death.

acute shigellosis (Fernandez and Sansonetti, 2003). Whilst closely related to *E. coli*, *Shigella* possesses unique methods of pathogenicity (Ud-Din and Wahid, 2014). Diarrhoea is an early symptom of infection as the bacteria moves through the small intestine, but the primary target of *Shigella* is the invasion of colonic epithelial cells from the basolateral surface (Phalipon and Sansonetti, 2007). Once internalised, the bacteria replicate and spread from cell to cell. The infection also causes inflammatory colitis via secreted toxins (Eashida et al., 2015). The mechanism of

*Shigella* invasion has been reviewed elsewhere (Carayol and Van Nhieu, 2013; Liu et al., 2019).

Infection with Group B serogroup *S. flexneri* has been shown to robustly induce the ISR, resulting in the activation of two eIF2 $\alpha$  kinases, GCN2, and HRI (Tattoli et al., 2012; Abdel-Nour et al., 2019; **Figure 3**). During the initial stage of infection, *S. flexneri* induces AA starvation through membrane damage, which results in the activation of GCN2 (Tattoli et al., 2012; **Figure 3A**). In its active form, GCN2 inhibits mTORC1 (**Figure 3F**), as

demonstrated via its dispersal from LAMP2, and increases the transcription of the AA stress-related gene asparagine synthetase, a response that increases for up to 4 h post-infection (Tattoli et al., 2012; Abdel-Nour et al., 2019). However, *S. flexneri* is able to activate mTORC1 via direct delivery of its OspB effector into host's cellular cytoplasm using the *S. flexneri* Type III secretion system (T3SS), which interacts with the IQ motif of the GTPase-activating protein 1 (Lu et al., 2015), an upstream regulator of mTORC1 (Tekletsadik et al., 2012; **Figure 3I**), ultimately resulting in increased host cell proliferation around the infection foci during the later stages of early infection. This increased cellular proliferation reduces *S. flexneri* spread but is thought to provide a preferential intracellular niche acting as a protective measure (Lu et al., 2015).

In addition, like STEC infection, *Shigella* infections also result in the aggregation of stalled messenger ribonucleoproteins (mRNPs) into stress granules (Tattoli et al., 2012; Vonaesch et al., 2016; Abdel-Nour et al., 2019; **Figure 3E**). The activation of the ISR leads to the upregulation of ATF3, ATF4, and GADD34 (Abdel-Nour et al., 2019) and consequently the robust upregulation of the transcription and expression of ISR and inflammatory-related genes (Tattoli et al., 2012; Abdel-Nour et al., 2019). Interestingly, in the presence of ISR-inducing exogenous stresses such as mitochondrial, oxidative and heat shock stress, an increase in frequency and a decrease in an area of stress granules formed are observed in *S. flexneri*-infected cells at 2–3.5 h post-infection (Vonaesch et al., 2016). The composition of the stress granules is also altered with the selective exclusion of eIF3B, eIF4G, and eIF4B via a mechanism downstream of eIF2 $\alpha$  (Vonaesch et al., 2016). Since the phenotype observed is similar to the hindered assembly of stress granules seen following chemical disruption of the tubulin network with nocodazole (Fujimura et al., 2009; Kolobova et al., 2009; Vonaesch et al., 2016) and the movement of eIF3B and eIF4B is controlled by microtubule assembly (Shanina et al., 2001; Harris et al., 2006; **Figure 3E**), this differential stress granule composition may be dependent upon microtubule dysregulation. Interestingly, stresses such as selenite and hydrogen peroxide, which bypass eIF2 $\alpha$  phosphorylation instead inhibiting mTORC1 function, also result in the formation of atypical stress granules lacking components such as eIF3 (Emara et al., 2012; Fujimura et al., 2012), thereby also implicating the *S. flexneri* infection-induced inhibition of mTORC1 in the differential stress granule formation (Tattoli et al., 2012; Vonaesch et al., 2016). As the formation of stress granules during *S. flexneri* infection has only been investigated up to 5 h (Abdel-Nour et al., 2019), whether the formation of stress granules is altered similarly during later-stage infection when mTORC1 is reactivated remains unknown. If this does not occur later when mTORC1 is reactivated, this would aid the hypothesis that modulation is at least partially dependent on mTORC1 inhibition. Furthermore, whether this modulation to stress granule formation during infection may provide any evolutionary benefit to *S. flexneri* or is simply a downstream effect of ISR modulation remains unknown.

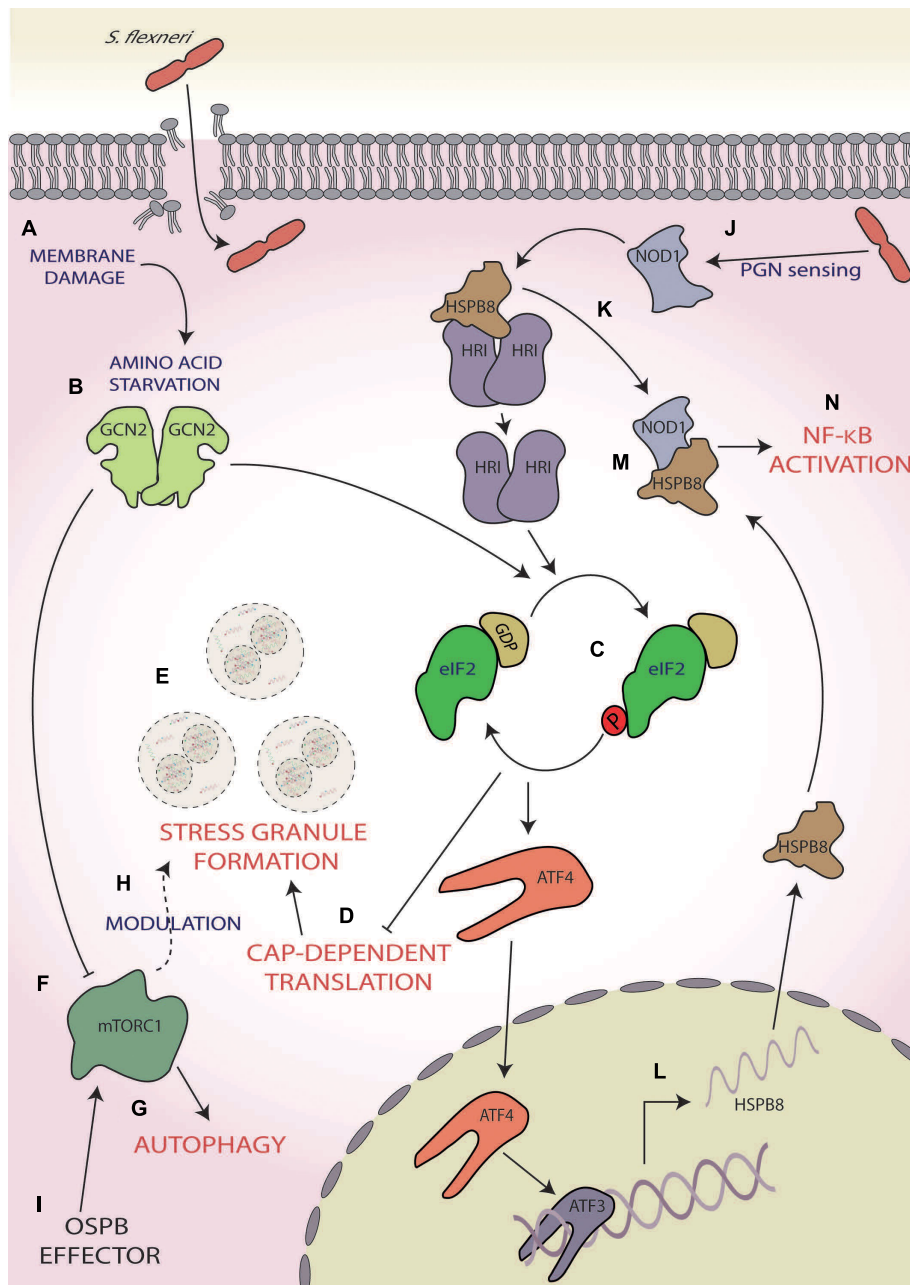
In addition to ISR activation via membrane damage, intracellular sensing of bacterial peptidoglycan by the host PRR, nucleotide-binding oligomerisation domain-containing protein

1 (NOD1), also induces ISR activation and expression of the pro-inflammatory cytokine nuclear factor kappa-light chain-enhancer of activated B cells (NF- $\kappa$ B) in an HRI-dependent manner (Abdel-Nour et al., 2019; **Figure 3J**). NOD1 activation results in dissociation of the HRI chaperone, heat shock protein beta-r 8 (HSPB8), from HRI, consequently activating HRI (Abdel-Nour et al., 2019; **Figure 3K**). Activated HRI induces robust eIF2 $\alpha$  phosphorylation (**Figure 3C**), resulting in heightened HSPB8 transcription in a manner dependent on ATF4 and ATF3 signalling (Abdel-Nour et al., 2019; **Figure 3L**). This nascent HSPB8 can interact with the previously dissociated HSPB8 and NOD1 to form a signalosome (**Figure 3M**) and during *S. flexneri* infection causes the upregulation of host immune inflammatory responses and macrophage activation through the NF- $\kappa$ B pathway (Abdel-Nour et al., 2019; **Figure 3N**). As this pathway is also triggered by misfolded proteins within the cytosol and is comparable with the UPR in the ER, it was coined the cytosolic UPR (cUPR; Abdel-Nour et al., 2019).

*Shigella flexneri* infection results in the induction of the ISR, which can be viewed as a protective response activating pro-inflammatory responses via the cUPR (Abdel-Nour et al., 2019) and autophagy via mTORC1 inhibition (Tattoli et al., 2012), during early infection. However, Abdel-Nour et al. (2019) found that the eIF2 $\alpha$  S51A mutant, which cannot be phosphorylated, results in a significantly increased frequency of intracellular *S. flexneri* compared with cells with phosphorylated eIF2 $\alpha$  (Abdel-Nour et al., 2019). Taken together, these data indicate that intracellular *S. flexneri* replication is heightened during ISR activation, and it is plausible that the phosphorylation state of eIF2 $\alpha$  may at least partially control bacterial spread and viability.

However, during later-stage infection, *S. flexneri*-mediated reactivation of mTORC1 not only increases host cell viability but also decreases bacterial spread around the infection foci (Lu et al., 2015). Whilst the impact of mTORC1 reactivation on bacterial infection has not been investigated, focussing on the ISR may provide further insights into this mechanism. Furthermore, infection results in GADD34 expression; however, whether this occurs during later-stage infection, when mTORC1 is reactivated, is as of yet unknown (Abdel-Nour et al., 2019). As GADD34 induces the dephosphorylation of eIF2 $\alpha$  via the activation of PPI1 (Connor et al., 2001; Novoa et al., 2001), the potential of sustained GADD34 expression during later stage of *S. flexneri* infection (Abdel-Nour et al., 2019) may lead to termination of the ISR, potentially aiding the cell in returning to homeostatic conditions.

There is also evidence that inhibition of mTORC1 leads to eIF2 $\alpha$  phosphorylation in cancer cell lines (Harvey et al., 2019). If this also occurs during *S. flexneri* infection, the reactivation of mTORC1 may further push the cellular equilibrium of eIF2 $\alpha$  towards the non-phosphorylated form. Therefore, if dephosphorylation of mTORC1 was coupled with the GADD34 expression, this could act as a two-part shift to favour a state with minimal eIF2 $\alpha$  phosphorylation. Though counter-intuitive, whilst defective eIF2 $\alpha$  signalling favours *S. flexneri* invasion (Abdel-Nour et al., 2019), it may lead to increased host viability, which has been suggested to benefit *S. flexneri*, the latter remaining in infected cells for much of its life cycle (Killackey et al., 2016). Thus, whether mTORC1 reactivation or



**FIGURE 3 |** *Shigella flexneri*. (A) Membrane damage caused during *S. flexneri* internalisation induces amino acid (AA) starvation, (B) activating general control non-depressible 2 (GCN2), and (C) subsequently phosphorylation of eIF2 $\alpha$ . (D) This results in the inhibition of cap-dependent translation initiation (E) and consequently the formation of stress granules. (F) GCN2 also inhibits mammalian target of rapamycin complex 1 [mTORC1; (G)], inducing autophagy and (H) modulating the frequency and composition of stress granules during exogenous stress induction. (I) mTORC1 activity is reactivated during later-stage infection via *S. flexneri*'s OspB effector. (J) Concurrently, *S. flexneri*'s peptidoglycan is detected by nucleotide-binding oligomerisation domain-containing protein 1 (NOD1), (K) which induces dissociation of the chaperone heat shock protein beta-r 8 (HSPB8) from HRI, causing its activation and subsequent eIF2 $\alpha$  phosphorylation. (L) This results in the activation of activating transcription factor 4 (ATF4), which along with ATF3, upregulated the expression and translation of HSPB8. (M) This nascent HSPB8 associates with NOD1 (N) leading to the activation of pro-inflammatory responses by nuclear factor kappa-light chain-enhancer of activated B cell (NF- $\kappa$ B) activation.

persistent GADD34 expression leads to eIF2 $\alpha$  dephosphorylation during infection, and the consequential effects upon host cell viability and *S. flexneri* persistence and replication, is an area requiring further attention. Given that increased host cellular

replication during OspB-mediated mTORC1 reactivation is thought to provide a preferential niche for *S. flexneri* survival (Lu et al., 2015), it is entirely plausible that this potential ISR termination may feed into this, helping to create an even further

immune-privileged environment for *S. flexneri*. Furthermore, the effect of OspB only occurs later during the infection (Lu et al., 2015), whereas the initial phenotype of GCN2 activation and mTOR inhibition require internalisation and the resulting membrane damage (Tattoli et al., 2012; Abdel-Nour et al., 2019), which is intriguing as internalisation of OspB only requires extracellular contact between the bacteria and host cell (Hueck, 1998). Therefore, elucidation of the interaction between *S. flexneri* and these pathways may provide valuable insights into the pathogenic mechanisms of *S. flexneri* in chronic infections.

### **Salmonella enterica**

*Salmonella enterica* serovar Typhimurium is an enteric pathogen primarily associated with food-borne gastrointestinal disease (Fabrega and Vila, 2013) and is thought to affect 1.3 billion people annually, leading to approximately 3 million deaths globally (Pui et al., 2011). During infection, *Salmonella typhimurium* adheres to the host's intestinal epithelium, resulting in extensive cytoskeletal rearrangements (Finlay et al., 1991). These modifications cause membrane ruffles, which eventually engulf the bacteria in large vesicles known as *Salmonella*-containing vesicles, creating an intracellular compartment in which *Salmonella* can survive and replicate (Steele-Mortimer, 2008). *Salmonella* infection is detected by host TLRs and NOD proteins, which initiates the NF- $\kappa$ B signalling cascade and results in cytokine and chemokine production, leading to an inflammatory state (Souvannavong et al., 2007; Spiller et al., 2008; Winter et al., 2009; Keestra et al., 2011).

As with *S. flexneri*, membrane damage induced by *Salmonella* invasion causes intracellular AA starvation with the activation of ISR through the eIF2 $\alpha$  kinases GCN2 (Tattoli et al., 2012; **Figures 4A,B**). This AA starvation-induced activation of GCN2 also initially inhibits the activity of mTORC1, via the dispersal from LAMP2 and results in the activation of autophagy (Tattoli et al., 2012; **Figures 4C,D**). Interestingly, within 4 h of infection, the raptor/rag/regulator pathways can reactivate mTORC1, effectively saving *Salmonella* from autophagy; however, the mechanism by which this occurs has yet to be fully determined (Tattoli et al., 2012; **Figure 4E**).

In later stages of infection, e.g., 12–24 h post-infection, *Salmonella* has also been shown to induce ER stress (**Figure 4F**), robustly activating the UPR and leading to the activation of X-box binding protein 1 and transcription factor 6 (Antoniou et al., 2018; **Figure 4G**), which is known to increase lipid biogenesis and increase ER expansion (Sriburi et al., 2004, 2007; **Figure 4H**). During *Salmonella*-induced ER stress, human leukocyte antigen (HLA)-B27 becomes misfolded, causing SCV to move away from host golgi apparatus (Antoniou et al., 2018). This, coupled with ER expansion, is thought to allow for increased space for the SCV and is supported by observations that ER stress induction by thapsigargin and misfolded HLA-B27 increase intracellular *Salmonella* viability and replication (Antoniou et al., 2018; **Figure 4I**). Thus, *Salmonella* effectively utilises the ISR and UPR in two opposing ways, firstly by reversing the autophagic responses brought on by the ISR during early-stage infection via

mTORC1 reactivation and then inducing ER stress to allow for preferential replication conditions in later stages of infection.

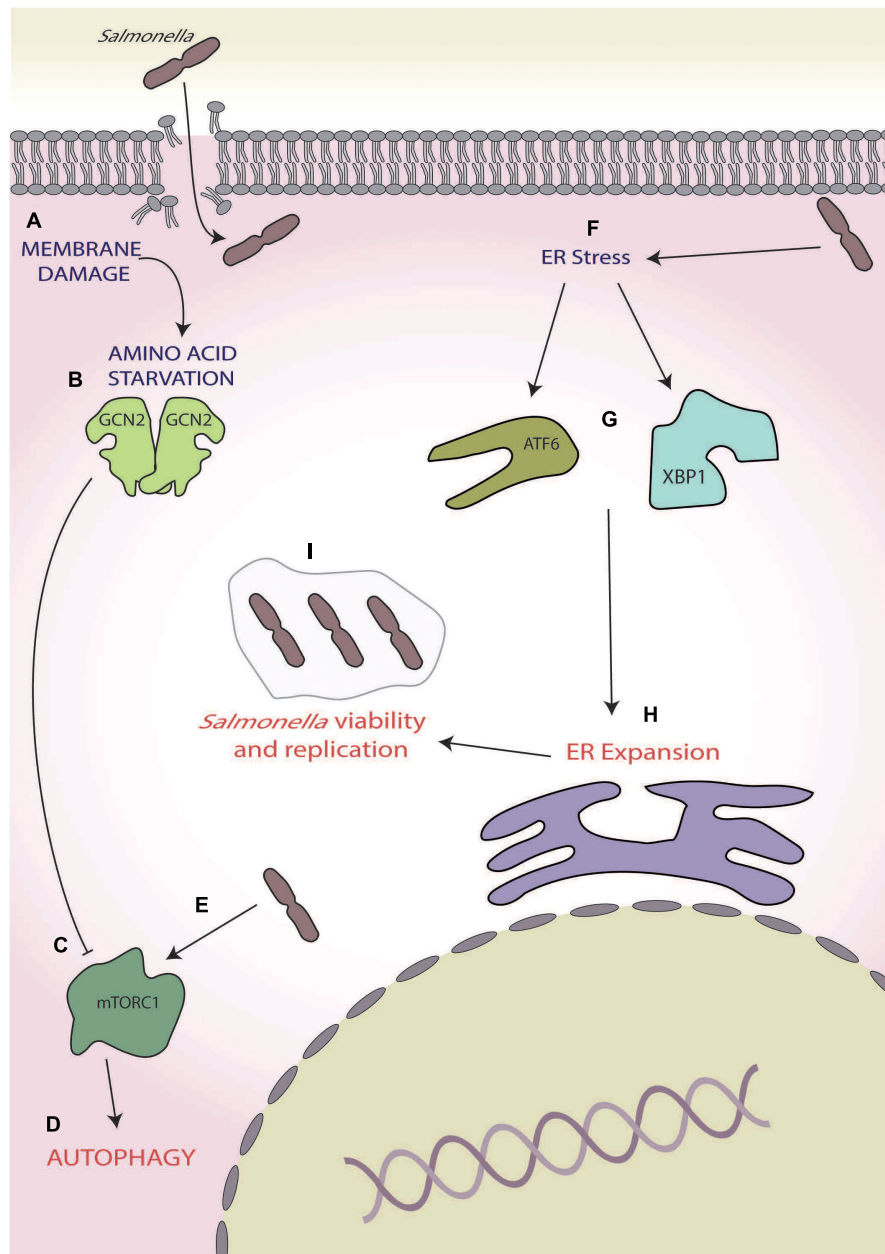
### **Pseudomonas aeruginosa**

*Pseudomonas aeruginosa*, a gram-negative, rod-shaped, mono-flagellated bacterium, is one of the most frequent causative agents for hospital-acquired infections resulting in loss of life (Buhl et al., 2015), with immunocompromised patient's survival rates being disproportionately lowered (Migiyama et al., 2013). Chronic lung infections caused by *P. aeruginosa* are a common cause of death in patients with cystic fibrosis and chronic obstructive pulmonary disease, with those affected often experiencing recurrent infections (Murphy et al., 2008; Yum et al., 2014).

During infection, *P. aeruginosa* secretes a wide variety of proteins including the extracellular adhesin CdrA (Borlee et al., 2010), the diffusible quorum-sensing molecule *N*-(3-oxododecanoyl)-homoserine lactone (HSL; Smith et al., 2002), and virulence factors [e.g., alkaline protease A (ArpA; Vasil and Ochsner, 1999) and HasAp (Létoffé et al., 1996)], all of which are known to induce ER stress (Grabiner et al., 2014; van't Wout et al., 2015; **Figure 5A**). In mouse embryonic fibroblasts (MEFs), HSL, which has a key role in *P. aeruginosa* cell-to-cell communication within the structurally ordered biofilm (Smith et al., 2002), induces ER stress via the release of Ca<sup>2+</sup> from ER stores (**Figure 5B**). This causes an imbalance in ER homeostasis and activates PERK (**Figure 5C**), which phosphorylates eIF2 $\alpha$  and results in a global shutdown of protein synthesis (Grabiner et al., 2014; **Figures 5D,E**). Interestingly, this translational stalling reduces the expression and secretion of the pro-inflammatory chemokine keratinocyte chemoattractant (KC), the mouse equivalent of interleukin 8 (IL-8; Grabiner et al., 2014; **Figure 5F**). Thus, HSL may lead to the suppression of KC secretion through eliciting the host ISR, aiding *P. aeruginosa* to evade host inflammatory and antibacterial responses during the early stages of infection (Grabiner et al., 2014). This observation contrasts with the robust expression of IL-8 seen in *S. flexneri* infection (Abdel-Nour et al., 2019) and suggests a species-specific response (Abdel-Nour et al., 2019). However, further studies are required to probe this and ascertain whether this response is species specific or cell dependent due to the differential approaches used with one study using mouse-derived MEFs (Grabiner et al., 2014) and the other using the human cervical epithelial cell line HeLa (Abdel-Nour et al., 2019).

Another example of *P. aeruginosa*-mediated ISR manipulation is through the secretion of ArpA (**Figure 5G**), a protease involved in, amongst other pathways, hosts siderophore-mediated iron scavenging (Vasil and Ochsner, 1999; Kim et al., 2006; van't Wout et al., 2015). Whereas HSL induces ER stress through activation of the p53 MAPK pathway, ArpA specifically activates HRI (**Figure 5H**), which induces the expression of GADD34 (van't Wout et al., 2015; **Figure 5I**) and is protective against *P. aeruginosa* cytotoxicity, allowing for prolonged host cell survival (van't Wout et al., 2015; **Figure 5J**). The mechanism by which HRI activation and GADD34 expression increase host viability is currently unknown, but increased GADD34 expression could lead to increased PP1 activity and consequently



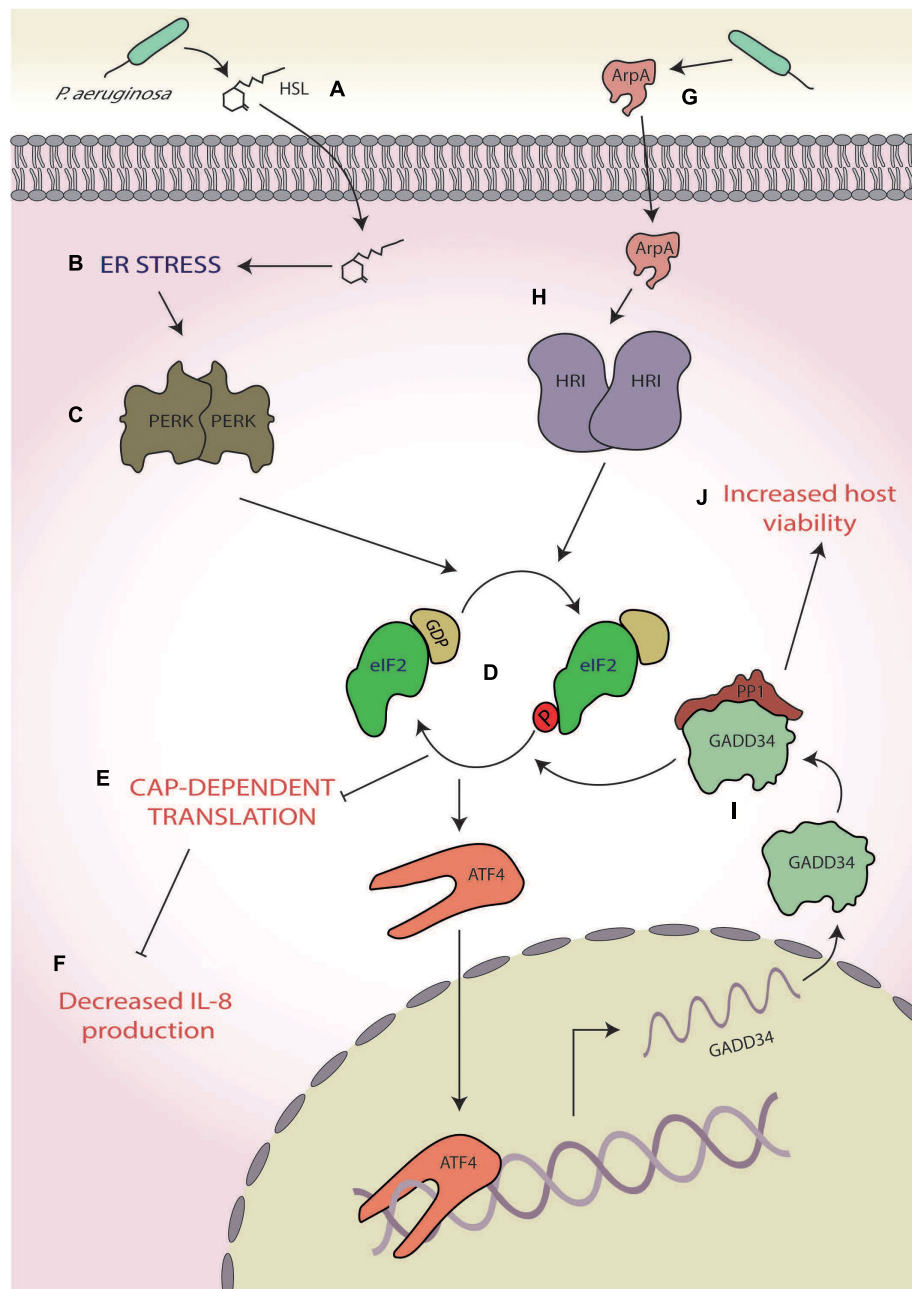


**FIGURE 4 |** *Salmonella*. (A) Membrane damage caused during *Salmonella* internalisation induces amino acid (AA) starvation, (B) leading to general control non-depressible 2 (GCN2) activation, and (C) inhibition of mammalian target of rapamycin complex 1 (mTORC1), and (D) ultimately inducing autophagy. (E) During later-stage infection, *Salmonella* reactivates mTORC1, thereby inhibiting autophagy. (F) *Salmonella* also induces endoplasmic reticulum (ER) stress, (G) activating the unfolded protein response (UPRs) ATF6 and X-box binding protein 1 XBP1 arms, (H) leading to expansion of the ER, and (I) which increases intracellular *Salmonella* viability and replication.

dephosphorylation of eIF2 $\alpha$  (Connor et al., 2001; Novoa et al., 2001). This deactivation of the ISR could prove to be a promising system for *P. aeruginosa* to push the cell towards survival, thereby increasing viability. However, given the recent findings of Abdel-Nour et al. (2019), it is entirely plausible that activation of HRI by ArpA may activate the cUPR, which has been shown to be protective against *S. flexneri* infection. Whether this increased viability is due to eIF2 $\alpha$  dephosphorylation or cUPR activation,

or a combination of both, remains to be elucidated and requires further attention.

*Pseudomonas aeruginosa* hereby displays a two-part manipulation of the host ISR, both dampening inflammatory responses and increasing host cell viability. These reduced inflammatory and immune responses may act as the critical tipping point, leading to the decreased survival of immunocompromised patients (who already have impaired



**FIGURE 5** | *Pseudomonas aeruginosa*. (A) The quorum-sensing molecule *N*-(3-oxododecanoyl)-homoserine lactone (HSL) secreted by *P. aeruginosa* (B) induces endoplasmic reticulum (ER) stress, (C) activating protein kinase R-like ER kinases (PERKs), and (D) which leads to eukaryotic initiation factor 2 alpha (eIF2 $\alpha$ ) phosphorylation. (E) The consequential translational stalling (F) results in decreased expression of the pro-inflammatory cytokine interleukin 8 (IL-8) production. (G) A protease, alkaline protease A (ArpA), secreted by *P. aeruginosa* (H) activates heme-regulated inhibitor (HRI), (I) leading to the specific upregulation of growth arrest and DNA damage-inducible protein (GADD34), and (J) which increases host cell viability.

immune responses), as it could result in unregulated and therefore heightened *P. aeruginosa* growth.

### ***Porphyromonas gingivalis***

*Porphyromonas gingivalis* is a gram-negative, anaerobic bacterium and the “keystone pathogen” of the chronic oral inflammatory gum disease, periodontitis (Socransky et al., 1998).

Infection triggers host immune responses resulting in inflammation of the gingival tissues, which in some cases progresses to periodontitis, resulting in alveolar bone resorption and ultimately tooth loss (Pihlstrom et al., 2005). *P. gingivalis* is known to modulate several host cell responses including the inhibition of antimicrobial responses whilst leaving pro-inflammatory signalling active, thereby providing nutrients from

inflammatory spoils (Hajishengallis and Lambris, 2012). To achieve this, *P. gingivalis* employs a range of virulence factors including lipopolysaccharides (LPSs), fimbriae and lysine- and arginine-specific cysteine proteases, termed gingipains (Jia et al., 2019). Gingipains are cell surface-anchored proteins (Andrian et al., 2006), which can also be excreted in membrane-bound vesicles (Grenier et al., 1989) and therefore can account for up to 85% of proteolytic activity around the *P. gingivalis* infection site (De Diego et al., 2013).

A recent study using human umbilical vein cells as host cells suggested that the virulence of *P. gingivalis* (strain 381) may involve the UPR and ISR (Hirasawa and Kurita-Ochiai, 2018; **Figure 6**). In this study, the authors showed that whilst infection ultimately resulted in apoptosis after 21-h infection, early-stage infection (~8 h) resulted in ER stress characterised by increased expression of CHOP and BiP at both the transcriptional and translational levels coupled with increased caspase-12 activity (Hirasawa and Kurita-Ochiai, 2018; **Figures 6A–C**). In addition, enhanced autophagy, characterised by the increased expression of autophagy markers Beclin-1, microtubule-associated protein 1A/1B-light chain 3, and acidic vesicular organelles (**Figure 6D**), was also observed. This response was inhibited by pretreatment with an ER stress inhibitor salubrinal, an inhibitor of PPI, that results in blockage of eIF2 $\alpha$  dephosphorylation (Boyce et al., 2005). Furthermore, siRNA knockdown of LC3 resulted in increased apoptosis, thereby implicating ER stress-induced autophagy as a protective response against *P. gingivalis*-induced apoptosis (Hirasawa and Kurita-Ochiai, 2018). These results are corroborated by studies in mice where administration of *P. gingivalis* induced ER stress with increased expression of both CHOP and BiP (Yamada et al., 2015).

Interestingly, the lysine-specific gingipain of *P. gingivalis* has been shown to degrade mTORC1 and modulate levels of mTORC1-associated proteins in oral epithelial cells after 4 h of infection (Stafford et al., 2013; **Figures 6E,F**). However, this mTOR degradation requires *P. gingivalis* internalisation, indicating that these effects are probably not mediated by the secretory fraction of gingipains produced by extracellular *P. gingivalis* (Stafford et al., 2013). Inactivation of mTOR is known to induce autophagy (Jung et al., 2010), fitting with the early stage autophagy seen by Hirasawa and Kurita-Ochiai (2018; **Figure 6G**). Furthermore, mTOR inhibition by rapamycin suppresses tunicamycin-induced ER stress, resulting in autophagy (Dong et al., 2015). Therefore, gingipain-mediated degradation of mTOR may help dampen ER stress induced by *P. gingivalis* infection, aiding host cell survival in the early stages of infection by delaying the onset of apoptosis.

## DISCUSSION AND FUTURE PERSPECTIVES

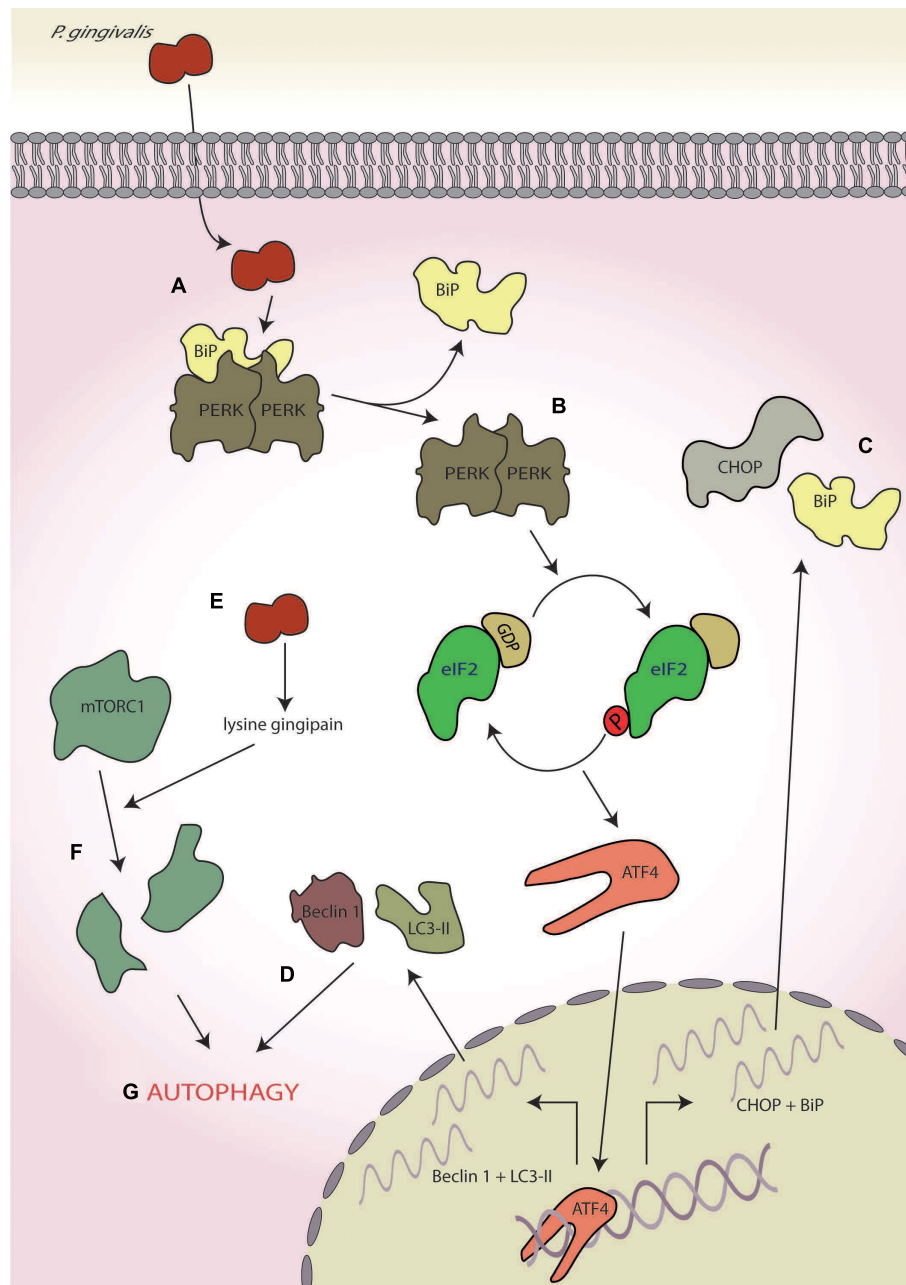
Infection by pathogens triggers concerted whole organism immune responses by the host, which are often initiated at the cellular level. In fact, individual host cells can respond independently to adverse conditions via a variety of intracellular signalling systems, with the ISR being a key mediator of these

responses and determining cellular fate (Costa-Mattioli and Walter, 2020). In recent years, it has become apparent that the ISR may have a wider role in host immune responses (Cláudio et al., 2013; Pulendran, 2015). Here, we discuss recent advances in understanding host–microbe interactions, which demonstrate that bacterial pathogens can interact with the host ISR during infection, directly manipulating cellular fate and immune signalling. This demonstrates that a comprehensive understanding of pathogenic interactions with the ISR is crucial for the elucidation of microbial disease progression.

Given the paradoxical role of the ISR, any change to a particular signal can have vastly different outcomes dependent upon the circumstance. For example, in neuronal cells, inhibition of PERK is protective during stress induction (Moreno et al., 2013); conversely in pancreatic cells, it induces type I interferon activation, proving to be fatal (Yu et al., 2015). These opposing outcomes of ISR dysregulation are also apparent during bacterial infection. Where PERK activation by STEC and *Porphorymonas gingivalis* infection ultimately leads to cell death (Tsutsuki et al., 2016; Hirasawa and Kurita-Ochiai, 2018), PERK activation by *P. aeruginosa* reduced the secretion of the pro-inflammatory cytokine KC, the mouse equivalent of IL-8, potentially aiding immune evasion (Grabner et al., 2014). Conversely, *S. flexneri* infection and activation of both GCN2 and HRI showed the opposite of this phenotype, leading to robust upregulation of IL-8 (Abdel-Nour et al., 2019). Although it remains to be elucidated whether these changes are cell type or infection specific, these conflicting phenotypes demonstrate the range of outcomes that bacterial manipulation of the ISR can have on immune signalling and cellular fate; however, further work is required to evidence this.

Furthermore, Abdel-Nour et al. (2019) found that inhibition of eIF2 signalling via the knock-in eIF2 $\alpha$  S51A mutant induced a significant decrease in intracellular *S. flexneri*, thereby implicating eIF2 $\alpha$  signalling in the control of bacterial internalisation. These findings corroborate those of Shrestha et al. (2012), who reported that invasion of the Far East scarlet-like fever causing pathogen *Yersinia pseudotuberculosis* resulted in a 25-fold increase in MEFs containing the eIF2 $\alpha$  S51A knock-in compared with wild type. The authors also identified functional eIF2 $\alpha$  signalling as a prerequisite for cytokine expression and demonstrated that *Y. pseudotuberculosis* specifically dampens eIF2 phosphorylation during a range of cellular stresses through the action of a virulence factor YopJ, which is inserted directly into host cells via a T3SS. Ultimately, this resulted in decreased pro-inflammatory cytokine expression (Shrestha et al., 2012). These findings further demonstrate the potential for ISR manipulation as an immuno-evasive mechanism of bacterial pathogens.

Particularly striking is that both *S. flexneri* and *P. aeruginosa* infection result in the activation of HRI, with *S. flexneri* inducing HRI activation leading to initiation of immune signalling as demonstrated by NF- $\kappa$ B activation (Abdel-Nour et al., 2019) and *P. aeruginosa* inducing HRI activation leading to increased host cell viability (van't Wout et al., 2015). Interestingly, during monospecies bacterial infection, HRI activation is required for *Y. pseudotuberculosis* and *Listeria monocytogenes* to achieve their



**FIGURE 6 |** *Porphyromonas gingivalis*. (A) *P. gingivalis* infection induces endoplasmic reticulum (ER) stress, (B) leading to protein kinase R-like ER kinase (PERK) activation, and (C) the expression of C/EBP homologous protein (CHOP) and binding immunoglobulin protein (BiP). (D) Concurrently, it also induces to autophagy as determined by the markers Beclin-1 and 1A/1B-light chain 3 (LC3-II). (E) *P. gingivalis* secretes a lysine-specific cysteine protease, termed the lysine gingipain, (F) which degrades mammalian target of rapamycin complex 1 (mTORC1), and (G) leading to the induction of autophagy.

virulence associated intracellular activities, where a lack of HRI interferes with the pathogens T3SS virulence factors (Shrestha et al., 2013). In contrast, at an organismal level, HRI-deficient mice have been shown to be more susceptible to *L. monocytogenes* infection and less able to mount a system-level cytokine response (Bahnan et al., 2018). This suggests potentially different outcomes depending on whether infection is monospecies or polymicrobial in nature, and hence, the exact role of HRI needs further

attention. To date, HRI-specific inhibitors have been identified (Rosen et al., 2009), and PERK inhibitors have already shown promise in combatting neurodegenerative diseases that impact upon the ISR (Moreno et al., 2013). Greater understanding of the exact role of HRI in bacterial infection is therefore an area that may allow for the targetting of HRI as a novel antimicrobial therapy using inhibitors or activators in an infection-specific manner. Findings that internalisation efficiency of *Chlamydia*

*trachomatis* was independent of HRI activity and that it was increased by loss of PKR (Shrestha et al., 2013) support PKR as another potential therapeutic target.

During prolonged ER stress, LPS is known to trigger a TLR-dependent reprogramming of the ISR (Woo et al., 2012). LPS is detected by TLRs, which triggers a signalling cascade mediated by the action of its downstream adaptor TRIF and results in decreased serine phosphorylation of eIF2B $\epsilon$ , thereby increasing eIF2B GEF activity in a manner independent of eIF2 $\alpha$  phosphorylation (Woo et al., 2012). This increased eIF2B GEF activity results in suppression of CHOP, increasing cell survival, and increased translation of the pro-inflammatory cytokine TNF- $\alpha$  (Woo et al., 2012). Both *P. aeruginosa* and *P. gingivalis* induce the production of host TNF- $\alpha$  dependent on their LPS (Raoust et al., 2009; Nativel et al., 2017). Therefore, given that both *P. aeruginosa* and *P. gingivalis* infections are long term and chronic and can induce ER stress and PERK activation, it is entirely plausible that the TNF- $\alpha$  expression may be at least partially dependent on the TLR/TRIF eIF2B pathway (Grabiner et al., 2014; van't Wout et al., 2015; Yamada et al., 2015; Hirasawa and Kurita-Ochiai, 2018). Indeed, *P. gingivalis* survival is known to hinge upon increased inflammatory signalling, whilst dampening host antimicrobial responses, all in a TLR-dependent manner (Hajishengallis and Lambris, 2012). Here, investigation into this potential reprogramming of the ISR during infection may yield crucial information into *P. gingivalis* virulence and may point to the potential of therapeutic targeting of eIF2B activity during chronic infection. Given that Woo et al. (2012) only investigated the TLR-dependent ISR reprogramming under ER stress, it is entirely possible that this signalling cascade may also occur during other stresses; therefore, all of the bacteria discussed above may induce this response. The limiting factors would be host cell survival time and cytotoxicity of infection, as this cascade occurs primarily during long-term stress (Woo et al., 2012).

This review has highlighted a diverse range of cellular outcomes during bacterial manipulation of the ISR. It should be noted that most of the studies to date have investigated the role of a single species upon a single cell type, whereas most bacterial infections are polymicrobial (Brogden et al., 2005). As with host immune responses, pathogenic bacteria are known to interact with other microbes; indeed, the virulence and disease severity of both *P. gingivalis* and *Salmonella* infection are thought to be reliant upon their ability to manipulate the wider bacterial community (reviewed in Hajishengallis et al., 2012). *P. aeruginosa* is also known to secrete products, which have a community wide effect in cystic fibrosis patients, ultimately shaping microbial community dynamics within the lung (Reviewed in O'Brien and Fothergill, 2017). Whilst,

pyocyanin, a quorum-sensing molecule secreted by *P. aeruginosa* in response to gram-negative cell wall fragments, is thought to reduce microbial community diversity to select for a more pathogenic community (Norman et al., 2004; Korgaonkar and Whiteley, 2011; Korgaonkar et al., 2013), pyocyanin also functions to generate ROS (Xu et al., 2013), a known inducer of the ISR. Given that secretion of pyocyanin is governed by inter-bacterial communication, which is inherently non-linear (Dietrich et al., 2006), alterations in pyocyanin concentrations could induce differential ROS production over time. This could plausibly result in oscillation of host ISR activation, adding another layer of complexity to the ISR dampening interaction seen during monospecies *P. aeruginosa* infection. Furthermore, *Bifidobacterium* spp. protects mice from STEC toxicity via the production of acetate, which inhibits the subAB toxin produced by STEC (Fukuda et al., 2011, 2012). This lowering of toxicity may well be due dampening of STEC-mediated ISR activation in host tissues around the infection sites, especially as subAB self-internalises (Morinaga et al., 2007), which is likely to be in contact with the extracellular acetate before the internalisation event. Therefore, given the role of the wider bacterial community upon virulence, studying the interactions between polymicrobial communities and the host ISR may lead to advances in the understanding of host-pathogen interactions, reflect physiological conditions and act as a platform for possible therapies.

## AUTHOR CONTRIBUTIONS

AK, SC, NC, and PS conceived and planned the manuscript. AK wrote the manuscript and designed the figures. AK, SC, NC, and PS edited and revised the manuscript. All authors approved and revised the final version of the manuscript.

## FUNDING

This project was funded by the Biomolecular Sciences Research Centre at Sheffield Hallam University. Open-access funds are supported by Sheffield Hallam University.

## ACKNOWLEDGMENTS

The authors thank the Biomolecular Sciences Research Centre and Sheffield Hallam University for funding this work as well as Dr K. E. Allen, Dr R. E. Hodgson, and Prof T. J. Smith for their helpful discussions.

## REFERENCES

- Abdel-Nour, M., Carneiro, L. A. M., Downey, J., Tsalikis, J., Outlioua, A., Prescott, D., et al. (2019). The heme-regulated inhibitor is a cytosolic sensor of protein misfolding that controls innate immune signaling. *Science* 365:eaaw4144. doi: 10.1126/science.aaw4144
- Amdahl, H., Jongerius, I., Meri, T., Pasanen, T., Hyvärinen, S., Haapasalo, K., et al. (2013). Staphylococcal ecb protein and host complement regulator factor h enhance functions of each other in bacterial immune evasion. *J. Immunol.* 191, 1775–1784. doi: 10.4049/jimmunol.1300638
- Ameri, K., and Harris, A. L. (2008). Activating transcription factor 4. *Int. J. Biochem. Cell Biol.* 40, 14–21. doi: 10.1016/j.biocel.2007.01.020

- Anda, S., Zach, R., and Grallert, B. (2017). Activation of Gcn2 in response to different stresses. *PLoS One* 12:e0182143. doi: 10.1371/journal.pone.0182143
- Anderson, P., and Kedersha, N. (2002). Stressful initiations. *J. Cell Sci.* 15, 3227. doi: 10.1080/08941930290085921
- Andrian, E., Grenier, D., and Rouabhia, M. (2006). Porphyromonas gingivalis-epithelial cell interactions in periodontitis. *J. Dent. Res.* 85, 392–403.
- Antoniou, A. N., Lenart, I., Kriston-Vizi, J., Iwawaki, T., Turmaine, M., Mchugh, K., et al. (2018). Salmonella exploits HLA-B27 and host unfolded protein responses to promote intracellular replication. *Ann. Rheum. Dis.* 78, 74–82. doi: 10.1136/annrheumdis-2018-213532
- Bah, A., and Vergne, I. (2017). Macrophage autophagy and bacterial infections. *Front. Immunol.* 8:1483. doi: 10.3389/fimmu.2017.01483
- Bahnan, W., Boucher, J. C., Gayle, P., Shrestha, N., Rosen, M., Aktas, B., et al. (2018). The eIF2 $\alpha$  Kinase Heme-Regulated Inhibitor Protects the Host from Infection by Regulating Intracellular Pathogen Trafficking. *Infect. Immun.* 86, e707–e717. doi: 10.1128/IAI.00707-17
- B'chir, W., Maurin, A.-C., Carraro, V., Averous, J., Jousse, C., Muranishi, Y., et al. (2013). The eIF2 $\alpha$ /ATF4 pathway is essential for stress-induced autophagy gene expression. *Nucleic Acids Res.* 41, 7683–7699. doi: 10.1093/nar/gkt563
- Berlanga, J. J., Herrero, S., and de Haro, C. (1998). Characterization of the Hemin-sensitive Eukaryotic Initiation Factor 2 $\alpha$  Kinase from Mouse Nonerythroid Cells. *J. Biol. Chem.* 273, 32340–32346. doi: 10.1074/jbc.273.48.32340
- Berlanga, J. J., Ventoso, I., Harding, H. P., Deng, J., Ron, D., Sonenberg, N., et al. (2006). Antiviral effect of the mammalian translation initiation factor 2 $\alpha$  kinase GCN2 against RNA viruses. *EMBO J.* 25, 1730–1740. doi: 10.1038/sj.emboj.7601073
- Borlee, B. R., Goldman, A. D., Murakami, K., Samudrala, R., Wozniak, D. J., and Parsek, M. R. (2010). *Pseudomonas aeruginosa* uses a cyclic-di-GMP-regulated adhesin to reinforce the biofilm extracellular matrix. *Mol. Microbiol.* 75, 827–842. doi: 10.1111/j.1365-2958.2009.06991.x
- Boyce, M., Bryant, K. F., Jousse, C., Long, K., Harding, H. P., Scheuner, D., et al. (2005). A selective inhibitor of eIF2 $\alpha$  dephosphorylation protects cells from ER stress. *Science* 307, 935–939.
- Brogden, K., Guthmiller, J., and Taylor, C. (2005). Human polymicrobial infections. *Lancet* 365, 253–255. doi: 10.1016/S0140-6736(05)70155-70150
- Brostrom, C. O., and Brostrom, M. A. (1997). Regulation of translational initiation during cellular responses to stress. *Prog. Nucleic Acid Res. Mol. Biol.* 58, 79–125.
- Buhl, M., Peter, S., and Willmann, M. (2015). Prevalence and risk factors associated with colonization and infection of extensively drug-resistant *Pseudomonas aeruginosa*: a systematic review. *Expert Rev. Anti. Infect. Ther.* 13, 1159–1170. doi: 10.1586/14787210.2015.1064310
- Carayol, N., and Van Nhieu, G. T. (2013). The inside story of shigella invasion of intestinal epithelial cells. *Cold Spring Harb. Perspect. Med.* 3:a016717. doi: 10.1101/cshperspect.a016717
- Chen, J. J. (2007). Regulation of protein synthesis by the heme-regulated eIF2 $\alpha$  kinase: relevance to anemias. *Blood* 109:2693. doi: 10.1182/blood-2006-08-041830
- Chen, J. J., Throop, M. S., Gehrke, L., Kuo, I., Pal, J. K., and Brodsky, M. (1991). Cloning of the cDNA of the heme-regulated eukaryotic initiation factor 2 $\alpha$  (eIF-2 $\alpha$ ) kinase of rabbit reticulocytes: homology to yeast GCN2 protein kinase and human double-stranded-RNA-dependent eIF-2 $\alpha$  kinase. *Proc. Natl. Acad. Sci. U S A.* 88, 7729–7733. doi: 10.1073/pnas.88.17.7729
- Cheshire, J. L., Williams, B. R., and Baldwin, A. S. Jr. (1999). Involvement of double-stranded RNA-activated protein kinase in the synergistic activation of nuclear factor-kappaB by tumor necrosis factor-alpha and gamma-interferon in preneural cells. *J. Biol. Chem.* 274, 4801–4806.
- Cláudio, N., Dalet, A., Gatti, E., and Pierre, P. (2013). Mapping the crossroads of immune activation and cellular stress response pathways. *EMBO J.* 32, 1214–1224. doi: 10.1038/emboj.2013.80
- Clemens, M. J., and Elia, A. (1997). The double-Stranded RNA-dependent protein kinase PKR: structure and function. *J. Interf. Cytokine Res.* 17, 503–524. doi: 10.1089/jir.1997.17.503
- Connor, J. H., Weiser, D. C., Li, S., Hallenbeck, J. M., and Shenolikar, S. (2001). Growth arrest and DNA damage-inducible protein GADD34 assembles a novel signaling complex containing protein phosphatase 1 and inhibitor 1. *Mol. Cell. Biol.* 21, 6841–6850. doi: 10.1128/MCB.21.20.6841-6850.2001
- Costa-Mattoli, M., and Walter, P. (2020). The integrated stress response: from mechanism to disease. *Science* 368:eaat5314. doi: 10.1126/science.aat5314
- Davis, B. K., Wen, H., and Ting, J. P.-Y. (2011). The inflammasome NLRs in immunity, inflammation, and associated diseases. *Annu. Rev. Immunol.* 29, 707–735. doi: 10.1146/annurev-immunol-031210-101405
- De Diego, I., Veillard, F. T., Guevara, T., Potempa, B., Sztukowska, M., Potempa, J., et al. (2013). Porphyromonas gingivalis virulence factor gingipain RgpB shows a unique zymogenic mechanism for cysteine peptidases. *J. Biol. Chem.* 288, 14287–14296. doi: 10.1074/jbc.M112.444927
- Deegan, S., Koryga, I., Glynn, S. A., Gupta, S., Gorman, A. M., and Samali, A. (2015). A close connection between the PERK and IRE arms of the UPR and the transcriptional regulation of autophagy. *Biochem. Biophys. Res. Commun.* 456, 305–311. doi: 10.1016/j.bbrc.2014.11.076
- Dennis, M. D., McGhee, N. K., Jefferson, L. S., and Kimball, S. R. (2013). Regulated in DNA damage and development 1 (REDD1) promotes cell survival during serum deprivation by sustaining repression of signaling through the mechanistic target of rapamycin in complex 1 (mTORC1). *Cell. Signal.* 25, 2709–2716. doi: 10.1016/j.cellsig.2013.08.038
- Dietrich, L. E. P., Price-Whelan, A., Petersen, A., Whiteley, M., and Newman, D. K. (2006). The phenazine pyocyanin is a terminal signalling factor in the quorum sensing network of *Pseudomonas aeruginosa*. *Mol. Microbiol.* 61, 1308–1321. doi: 10.1111/j.1365-2958.2006.05306.x
- Dong, G., Liu, Y., Zhang, L., Huang, S., Ding, H.-F., and Dong, Z. (2015). mTOR contributes to ER stress and associated apoptosis in renal tubular cells. *Am. J. Physiol. Physiol.* 308, F267–F274. doi: 10.1152/ajprenal.00629.2014
- Dong, J., Qiu, H., Garcia-Barrio, M., Anderson, J., and Hinnebusch, A. G. (2000). Uncharged tRNA Activates GCN2 by displacing the protein kinase moiety from a bipartite tRNA-Binding domain. *Mol. Cell* 6, 269–279. doi: 10.1016/S1097-2765(00)00028-29
- Donnelly, N., Gorman, A. M., Gupta, S., and Samali, A. (2013). The eIF2 $\alpha$  kinases: their structures and functions. *Cell. Mol. Life Sci.* 70, 3493–3511. doi: 10.1007/s00018-012-1252-1256
- Eashida, H., Emimuro, H., and Esasakawa, C. (2015). *Shigella* manipulates host immune responses by delivering effector proteins with specific roles. *Front. Immunol.* 6:219. doi: 10.3389/fimmu.2015.00219
- Emara, M. M., Fujimura, K., Sciaranghella, D., Ivanova, V., Ivanov, P., and Anderson, P. (2012). Hydrogen peroxide induces stress granule formation independent of eIF2 $\alpha$  phosphorylation. *Biochem. Biophys. Res. Commun.* 423, 763–769. doi: 10.1016/j.bbrc.2012.06.033
- Fabrega, A., and Vila, J. (2013). *Salmonella enterica* serovar typhimurium skills to succeed in the host: virulence and regulation. *Clin. Microbiol. Rev.* 26, 308–341. doi: 10.1128/CMR.00066-12
- Fernandez, M. I., and Sansonetti, P. J. (2003). *Shigella* interaction with intestinal epithelial cells determines the innate immune response in shigellosis. *Int. J. Med. Microbiol.* 293, 55–67. doi: 10.1078/1438-4221-00244
- Finlay, B. B., Ruschkowski, S., and Dedhar, S. (1991). Cytoskeletal rearrangements accompanying salmonella entry into epithelial cells. *J. Cell Sci.* 99, 283–296.
- Fujimura, K., Katahira, J., Kano, F., Yoneda, Y., and Murata, M. (2009). Microscopic dissection of the process of stress granule assembly. *Biochim. Biophys. Acta - Mol. Cell Res.* 1793, 1728–1737. doi: 10.1016/j.bbamcr.2009.08.010
- Fujimura, K., Sasaki, A. T., and Anderson, P. (2012). Selenite targets eIF4E-binding protein-1 to inhibit translation initiation and induce the assembly of non-canonical stress granules. *Nucleic Acids Res.* 40, 8099–8110. doi: 10.1093/nar/gks566
- Fukuda, S., Toh, H., Hase, K., Oshima, K., Nakanishi, Y., Yoshimura, K., et al. (2011). Bifidobacteria can protect from enteropathogenic infection through production of acetate. *Nature* 469, 543–547. doi: 10.1038/nature09646
- Fukuda, S., Toh, H., Taylor, T. D., Ohno, H., and Hattori, M. (2012). Acetate-producing bifidobacteria protect the host from enteropathogenic infection via carbohydrate transporters. *Gut Microbes* 3, 449–454. doi: 10.4161/gmic.21214
- Galehdar, Z., Swan, P., Fuerth, B., Callaghan, S. M., Park, D. S., and Cregan, S. P. (2010). Neuronal apoptosis induced by endoplasmic reticulum stress is regulated by ATF4-CHOP-Mediated induction of the Bcl-2 homology 3-Only member PUMA. *J. Neurosci.* 30, 16938–16948. doi: 10.1523/JNEUROSCI.1598-10.2010
- Grabiner, M. A., Fu, Z., Wu, T., Barry, K. C., Schwarzer, C., and Machen, T. E. (2014). *Pseudomonas aeruginosa* quorum-sensing molecule homoserine lactone modulates inflammatory signaling through PERK and eIF-2 $\alpha$ . *J. Immunol.* 193, 1459–1467. doi: 10.4049/jimmunol.1303437

- Grallert, B., and Boye, E. (2007). The Gcn2 kinase as a cell cycle regulator. *Cell Cycle* 6, 2768–2772. doi: 10.4161/cc.6.22.4933
- Grenier, D., Chao, G., and McBride, B. C. (1989). Characterization of sodium dodecyl sulfate-stable *Bacteroides gingivalis* proteases by polyacrylamide gel electrophoresis. *Infect. Immun.* 57, 95–99. doi: 10.1128/iai.57.1.95-99.1989
- Hajishengallis, G., Darveau, R. P., and Curtis, M. A. (2012). The keystone-pathogen hypothesis. *Nat. Rev. Microbiol.* 10, 717–725. doi: 10.1038/nrmicro2873
- Hajishengallis, G., and Lambris, J. D. (2012). Complement and dysbiosis in periodontal disease. *Immunobiology* 217, 1111–1116. doi: 10.1016/j.imbio.2012.07.007
- Han, A., Fujiwara, Y., Browne, C., Chin, G., Fleming, M., Leboulch, P., et al. (2001). Heme-regulated eIF2 alpha kinase (HRI) is required for translational regulation and survival of erythroid precursors in iron deficiency. *EMBO J.* 20, 6909–6918. doi: 10.1093/emboj/20.23.6909
- Harding, H. P., Novoa, I., Zhang, Y., Zeng, H., Wek, R., Schapira, M., et al. (2000). Regulated translation initiation controls stress-induced gene expression in mammalian cells. *Mol. Cell* 6, 1099–1108. doi: 10.1016/S1097-2765(00)00108-108
- Harding, H. P., Zhang, Y., Zeng, H., Novoa, I., Lu, P. D., Calfon, M., et al. (2003). An integrated stress response regulates amino acid metabolism and resistance to oxidative stress. *Mol. Cell* 11, 619–633. doi: 10.1016/S1097-2765(03)00105-109
- Harris, T. E., Chi, A., Shabanowitz, J., Hunt, D. F., Rhoads, R. E., and Lawrence, J. C. (2006). mTOR-dependent stimulation of the association of eIF4G and eIF3 by insulin. *EMBO J.* 25, 1659–1668. doi: 10.1038/sj.emboj.7601047
- Harvey, R. F., Pöyry, T. A. A., Stoneley, M., and Willis, A. E. (2019). Signaling from mTOR to eIF2 $\alpha$  mediates cell migration in response to the chemotherapeutic doxorubicin. *Sci. Signal.* 12:eaaw6763. doi: 10.1126/scisignal.aaw6763
- Hasegawa, M., Yang, K., Hashimoto, M., Park, J.-H., Kim, Y.-G., Fujimoto, Y., et al. (2006). Differential release and distribution of Nod1 and Nod2 immunostimulatory molecules among bacterial species and environments. *J. Biol. Chem.* 281, 29054–29063. doi: 10.1074/jbc.M602638200
- Hinnebusch, A. G., and Lorsch, J. R. (2012). The mechanism of eukaryotic translation initiation: new insights and challenges. *Cold Spring Harb. Perspect. Biol.* 4:a011544. doi: 10.1101/cshperspect.a011544
- Hirasawa, M., and Kurita-Ochiai, T. (2018). *Porphyromonas gingivalis* induces apoptosis and autophagy via ER stress in human umbilical vein endothelial cells. *Med. Inflamm.* 2018:1967506. doi: 10.1155/2018/1967506
- Hoshino, K., Takeuchi, O., Kawai, T., Sanjo, H., Ogawa, T., and Takeda, Y. (1999). Cutting edge: toll-like receptor 4 (TLR4)-deficient mice are hyporesponsive to lipopolysaccharide: evidence for TLR4 as the Lps gene product. *J. Immunol.* 162, 3749–3752.
- Hueck, C. J. (1998). Type III protein secretion systems in bacterial pathogens of animals and plants. *Microbiol. Mol. Biol. Rev.* 62, 379–433. doi: 10.1128/mmb.62.2.379-433.1998
- Ito, T., Yang, M., and May, W. S. (1999). RAX, a cellular activator for double-stranded RNA-dependent protein kinase during stress signaling. *J. Biol. Chem.* 274, 15427–15432. doi: 10.1074/jbc.274.22.15427
- Jennings, M. D., Zhou, Y., Mohammad-Qureshi, S. S., Bennett, D., and Pavitt, G. D. (2013). eIF2B promotes eIF5 dissociation from eIF2\*GDP to facilitate guanine nucleotide exchange for translation initiation. *Genes Dev.* 27, 2696–2707. doi: 10.1101/gad.231514.113
- Jia, L., Han, N., Du, J., Guo, L., Luo, Z., and Liu, Y. (2019). Pathogenesis of important virulence factors of *porphyromonas gingivalis* via toll-like receptors. *Front. Cell. Infect. Microbiol.* 9:262. doi: 10.3389/fcimb.2019.00262
- Jung, C. H., Ro, S.-H., Cao, J., Otto, N. M., and Kim, D.-H. (2010). mTOR regulation of autophagy. *FEBS Lett.* 584, 1287–1295. doi: 10.1016/j.febslet.2010.01.017
- Karpinski, B. A., Morle, G. D., Huggenvik, J., Uhler, M. D., and Leiden, J. M. (1992). Molecular cloning of human CREB-2: an ATF/CREB transcription factor that antagonistically regulate transcription from the cAMP response element. *Proc. Natl. Acad. Sci. U S A.* 89:4820. doi: 10.1073/pnas.89.11.4820
- Kedersha, N., Cho, M. R., Li, W., Yacono, P. W., Chen, S., Gilks, N., et al. (2000). Dynamic shuttling of Tia-1 accompanies the recruitment of mRNA to mammalian stress granules. *J. Cell Biol.* 151, 1257–1268. doi: 10.1083/jcb.151.6.1257
- Keestra, A. M., Winter, M. G., Klein-Douwel, D., Xavier, M. N., Winter, S. E., Kim, A., et al. (2011). A *Salmonella* virulence factor activates the NOD1/NOD2 signaling pathway. *MBio* 2:e00266-211. doi: 10.1128/mBio.00266-211
- Kenner, L. R., Anand, A. A., Nguyen, H. C., Myasnikov, A. G., Klose, C. J., McGeever, L. A., et al. (2019). eIF2B-catalyzed nucleotide exchange and phosphoregulation by the integrated stress response. *Science* 364, 491–495. doi: 10.1126/science.aaw2922
- Killackey, S. A., Sorbara, M. T., and Girardin, S. E. (2016). Cellular aspects of *Shigella* pathogenesis: focus on the manipulation of host cell processes. *Front. Cell Infect. Microbiol.* 6:38. doi: 10.3389/fcimb.2016.00038
- Kim, S.-J., Park, R.-Y., Kang, S.-M., Choi, M.-H., Kim, C.-M., and Shin, S.-H. (2006). *Pseudomonas aeruginosa* alkaline protease can facilitate siderophore-mediated iron-uptake via the proteolytic cleavage of transferrins. *Biol. Pharm. Bull.* 29, 2295–2300. doi: 10.1248/bpb.29.2295
- Ko, H., Maymani, H., and Rojas-Hernandez, C. (2016). Hemolytic uremic syndrome associated with *Escherichia coli* O157:H7 infection in older adults: a case report and review of the literature. (Clinical report). *J. Med. Case Rep.* 10:175. doi: 10.1186/s13256-016-0970-z
- Kolobova, E., Efimov, A., Kaverina, I., Rishi, A. K., Schrader, J. W., Ham, A.-J., et al. (2009). Microtubule-dependent association of AKAP350A and CCAR1 with RNA stress granules. *Exp. Cell Res.* 315, 542–555. doi: 10.1016/j.yexcr.2008.11.011
- Korgaonkar, A., Trivedi, U., Rumbaugh, K. P., and Whiteley, M. (2013). Community surveillance enhances *Pseudomonas aeruginosa* virulence during polymicrobial infection. *Proc. Natl. Acad. Sci. U S A.* 110, 1059–1064. doi: 10.1073/pnas.1214550110
- Korgaonkar, A. K., and Whiteley, M. (2011). *Pseudomonas aeruginosa* enhances production of an antimicrobial in response to N-acetylglucosamine and peptidoglycan. *J. Bacteriol.* 193, 909–917. doi: 10.1128/JB.01175-1110
- Koumenis, C., Naczki, C., Koritzinsky, M., Rastani, S., Diehl, A., Sonenberg, N., et al. (2002). Regulation of protein synthesis by hypoxia via activation of the endoplasmic reticulum kinase PERK and phosphorylation of the translation initiation factor eIF2 $\alpha$ . *Mol. Cell. Biol.* 22, 7405–7416. doi: 10.1128/mcb.22.21.7405-7416.2002
- Kroemer, G., Mariño, G., and Levine, B. (2010). Autophagy and the integrated stress response. *Mol. Cell* 40, 280–293. doi: 10.1016/j.molcel.2010.09.023
- Kumar, H., Kawai, T., and Akira, S. (2009). Toll-like receptors and innate immunity. *Biochem. Biophys. Res. Commun.* 388, 621–625. doi: 10.1016/j.bbrc.2009.08.062
- Lai, Y., and Gallo, R. (2008). Toll-Like receptors in skin infections and inflammatory diseases. *Infect. Disord. - Drug Targets* 8, 144–155. doi: 10.2174/1871526510808030144
- Lee, Y.-Y., Cevallos, R. C., and Jan, E. (2009). An upstream open reading frame regulates translation of GADD34 during cellular stresses that induce eIF2 $\alpha$  phosphorylation. *J. Biol. Chem.* 284:6661. doi: 10.1074/jbc.M806735200
- Létoffé, S., Deleplaire, P., and Wandersman, C. (1996). Protein secretion in gram-negative bacteria: assembly of the three components of ABC protein-mediated exporters is ordered and promoted by substrate binding. *EMBO J.* 15, 5804–5811. doi: 10.1002/j.1460-2075.1996.tb00967.x
- Lin, J. H., Li, H., Zhang, Y., Ron, D., and Walter, P. (2009). Divergent effects of PERK and IRE1 signaling on cell viability. *PLoS One* 4:e4170. doi: 10.1371/journal.pone.0004170
- Linero, F. N., Thomas, M. G., Boccaccio, G. L., and Scolaro, L. A. (2011). Junin virus infection impairs stress-granule formation in Vero cells treated with arsenite via inhibition of eIF2 $\alpha$  phosphorylation. *J. Gen. Virol.* 92, 2889–2899. doi: 10.1099/vir.0.033407-33400
- Liu, G., Pilla, G., and Tang, C. M. (2019). *Shigella* host: pathogen interactions: keeping bacteria in the loop. *Cell. Microbiol.* 21:e13062. doi: 10.1111/cmi.13062
- Loś, J. M., Los, M., Wegrzyn, A., and Wegrzyn, G. (2012). Altruism of Shiga toxin-producing *Escherichia coli*: recent hypothesis versus experimental results. *Front. Cell. Infect. Microbiol.* 2:166. doi: 10.3389/fcimb.2012.00166
- Loschi, M., Leishman, C. C., Berardone, N., and Boccaccio, G. L. (2009). Dynein and kinesin regulate stress-granule and P-body dynamics. *J. Cell Sci.* 122, 3973–3982. doi: 10.1242/jcs.051383
- Lu, L., Han, A.-P., and Chen, J.-J. (2001). Translation initiation control by heme-regulated eukaryotic initiation factor 2 $\alpha$  kinase in erythroid cells under cytoplasmic stresses. *Mol. Cell. Biol.* 21, 7971–7980. doi: 10.1128/MCB.21.23.7971-7980.2001
- Lu, R., Herrera, B. B., Eshleman, H. D., Fu, Y., Bloom, A., Li, Z., et al. (2015). *Shigella* effector OspB activates mTORC1 in a manner that depends on IQGAP1

- and promotes cell proliferation. *PLoS Pathog* 11:e1005200. doi: 10.1371/journal.ppat.1005200
- Majowicz, S. E., Scallan, E., Jones-Bitton, A., Sargeant, J. M., Stapleton, J., Angulo, F. J., et al. (2014). Global incidence of human shiga toxin-producing *Escherichia coli* infections and deaths: a systematic review and knowledge synthesis. *Foodborne Pathog. Dis.* 11, 447–455. doi: 10.1089/fpd.2013.1704
- McEwen, E., Kedersha, N., Song, B., Scheuner, D., Gilks, N., Han, A., et al. (2005). Heme-regulated inhibitor kinase-mediated phosphorylation of eukaryotic translation initiation factor 2 inhibits translation, induces stress granule formation, and mediates survival upon arsenite exposure. *J. Biol. Chem.* 280, 16925–16933. doi: 10.1074/jbc.M412882200
- Meri, T., Amdahl, H., Lehtinen, M. J., Hyvärinen, S., McDowell, J. V., Bhattacharjee, A., et al. (2013). Microbes bind complement inhibitor factor H via a common site. *PLoS Pathog* 9:e1003308. doi: 10.1371/journal.ppat.1003308
- Meurs, E., Chong, K., Galabru, J., Thomas, N. S. B., Kerr, I. M., Williams, B. R. G., et al. (1990). Molecular cloning and characterization of the human double-stranded RNA-activated protein kinase induced by interferon. *Cell* 62, 379–390. doi: 10.1016/0092-8674(90)90374-N
- Migiyama, Y., Yanagihara, K., Kaku, N., Harada, Y., Yamada, K., Nagaoka, K., et al. (2013). P315 *Pseudomonas aeruginosa* bacteremia in immunocompromised and immunocompetent patients: impact of initial antibiotic therapy on survival. *Int. J. Antimicrob. Agents* 42:S141. doi: 10.1016/S0924-8579(13)70556-70559
- Moreno, J. A., Halliday, M., Molloy, C., Radford, H., Verity, N., Axten, J. M., et al. (2013). Oral treatment targeting the unfolded protein response prevents neurodegeneration and clinical disease in prion-infected mice. *Sci. Transl. Med.* 5, ra138–ra206. doi: 10.1126/scitranslmed.3006767
- Morinaga, N., Yahiro, K., Matsuura, G., Watanabe, M., Nomura, F., Moss, J., et al. (2007). Two distinct cytotoxic activities of subtilase cytotoxin produced by shiga-toxicogenic *Escherichia coli*. *Infect. Immun.* 75, 488–496. doi: 10.1128/IAI.01336-1336
- Murphy, T. F., Brauer, A. L., Eschberger, K., Lobbins, P., Grove, L., Cai, X., et al. (2008). *Pseudomonas aeruginosa* in chronic obstructive pulmonary disease. *Am. J. Respir. Crit. Care Med.* 177, 853–860. doi: 10.1164/rccm.200709-1413OC
- Nakamura, T., Furuhashi, M., Li, P., Cao, H., Tuncman, G., Sonenberg, N., et al. (2010). Double-Stranded RNA-Dependent protein kinase links pathogen sensing with stress and metabolic homeostasis. *Cell* 140, 338–348. doi: 10.1016/j.cell.2010.01.001
- Nativel, B., Couret, D., Giraud, P., Meilhac, O., D’Hellencourt, C. L., Viranaïcken, W., et al. (2017). Porphyromonas gingivalis lipopolysaccharides act exclusively through TLR4 with a resilience between mouse and human. *Sci. Rep.* 7:15789. doi: 10.1038/s41598-017-16190-y
- Nicholson, L. B. (2016). The immune system. *Essays Biochem.* 60, 275–301. doi: 10.1042/EBC20160017
- Norman, R. S., Moeller, P., McDonald, T. J., and Morris, P. J. (2004). Effect of pyocyanin on a crude-oil-degrading microbial community. *Appl. Environ. Microbiol.* 70, 4004–4011. doi: 10.1128/AEM.70.7.4004-4011.2004
- Nover, L., Scharf, K. D., and Neumann, D. (1989). Cytoplasmic heat shock granules are formed from precursor particles and are associated with a specific set of mRNAs. *Mol. Cell Biol.* 9, 1298–1308. doi: 10.1128/MCB.9.3.1298
- Novoa, I., Zeng, H., Harding, H. P., and Ron, D. (2001). Feedback Inhibition of the unfolded protein response by GADD34-Mediated dephosphorylation of eIF2 $\alpha$ . *J. Cell Biol.* 153, 1011–1022. doi: 10.1083/jcb.153.5.1011
- Novoa, I., Zhang, Y., Zeng, H., Jungreis, R., Harding, H. P., and Ron, D. (2003). Stress-induced gene expression requires programmed recovery from translational repression. *EMBO J.* 22, 1180–1187. doi: 10.1093/emboj/cdg112
- Ogawa, M., Yoshimori, T., Suzuki, T., Sagara, H., Mizushima, N., and Sasakawa, C. (2005). Escape of intracellular *Shigella* from autophagy. *Science* 307, 727–731. doi: 10.1126/science.1106036
- Onuki, R., Bando, Y., Suyama, E., Katayama, T., Kawasaki, H., Baba, T., et al. (2004). An RNA-dependent protein kinase is involved in tunicamycin-induced apoptosis and Alzheimer’s disease. *EMBO J.* 23, 959–968. doi: 10.1038/sj.emboj.7600049
- Opitz, B., Förster, S., Hocke, A. C., Maass, M., Schmeck, B., Hippenstiel, S., et al. (2005). Nod1-Mediated endothelial cell activation by *Chlamydomydia pneumoniae*. *Circ. Res.* 96, 319–326. doi: 10.1161/01.RES.0000155721.83594.2c
- O’Brien, S., and Fothergill, J. L. (2017). The role of multispecies social interactions in shaping *Pseudomonas aeruginosa* pathogenicity in the cystic fibrosis lung. *FEMS Microbiol. Lett.* 364:fnx128. doi: 10.1093/femsle/fnx128
- Pakos-Zebrucka, K., Koryga, I., Mnich, K., Ljubic, M., Samali, A., and Gorman, A. M. (2016). The integrated stress response. *EMBO Rep.* 17, 1374–1395. doi: 10.15252/embr.201642195
- Palam, L. R., Baird, T. D., and Wek, R. C. (2011). Phosphorylation of eIF2 facilitates ribosomal bypass of an inhibitory upstream ORF to enhance CHOP translation. *J. Biol. Chem.* 286, 10939–10949. doi: 10.1074/jbc.M110.216093
- Phalipon, A., and Sansonetti, P. J. (2007). *Shigella*’s ways of manipulating the host intestinal innate and adaptive immune system: a tool box for survival? *Immunol. Cell Biol.* 85, 119–129. doi: 10.1038/sj.icb.7100025
- Pihlstrom, B. L., Michalowicz, B. S., and Johnson, N. W. (2005). Periodontal diseases. *Lancet* 366, 1809–1820. doi: 10.1016/S0140-6736(05)67728-67728
- Price, N., and Proud, C. (1994). The guanine nucleotide-exchange factor, eIF-2B. *Biochimie* 76, 748–760. doi: 10.1016/0300-9084(94)90079-90075
- Pui, C. F., Wong, W. C., Chai, L. C., Tunung, R., Jeyaletchumi, P., and Hidayah, M. S. N. (2011). *Salmonella*: a foodborne pathogen. *Int. Food Res. J.* 18, 465–473.
- Pulendran, B. (2015). The varieties of immunological experience: of pathogens, stress, and dendritic cells. *Annu. Rev. Immunol.* 33, 563–606. doi: 10.1146/annurev-immunol-020711-075049
- Puthalakath, H., O’Reilly, L. A., Gunn, P., Lee, L., Kelly, P. N., Huntington, N. D., et al. (2007). ER stress triggers apoptosis by activating BH3-Only protein bim. *Cell* 129, 1337–1349. doi: 10.1016/j.cell.2007.04.027
- Pyo, C.-W., Lee, S.-H., and Choi, S.-Y. (2008). Oxidative stress induces PKR-dependent apoptosis via IFN- $\gamma$  activation signaling in Jurkat T cells. *Biochem. Biophys. Res. Commun.* 377, 1001–1006. doi: 10.1016/j.bbrc.2008.10.103
- Rabouw, H. H., Visser, L. J., Passchier, T. C., Langereis, M. A., Liu, F., Giansanti, P., et al. (2020). Inhibition of the integrated stress response by viral proteins that block p-eIF2–eIF2B association. *Nat. Microbiol.* 5, 1361–1373. doi: 10.1038/s41564-020-0759-750
- Rafie-Kolpin, M., Chefalo, P. J., Hussain, Z., Hahn, J., Uma, S., Matts, R. L., et al. (2000). Two heme-binding domains of heme-regulated eukaryotic initiation factor-2 $\alpha$  kinase. N terminus and kinase insertion. *J. Biol. Chem.* 275:5171. doi: 10.1074/jbc.275.7.5171
- Raoust, E., Balloy, V., Garcia-Verdugo, I., Touqui, L., Ramphal, R., Chignard, M., et al. (2009). *Pseudomonas aeruginosa* LPS or flagellin are sufficient to activate TLR-Dependent signaling in murine alveolar macrophages and airway epithelial cells (TLRs and *P. aeruginosa*). *PLoS One* 4:e7259. doi: 10.1371/journal.pone.0007259
- Riley, L. W., Remis, R. S., Helgerson, S. D., McGee, H. B., Wells, J. G., Davis, B. R., et al. (1983). Hemorrhagic colitis associated with a rare *Escherichia coli* serotype. *N. Engl. J. Med.* 308, 681–685. doi: 10.1056/NEJM198303243081203
- Rodrigues, L. O. C. P., Graca, R. S. F., and Carneiro, L. A. M. (2018). Integrated stress responses to bacterial pathogenesis patterns. *Front. Immunol.* 9:1306. doi: 10.3389/fimmu.2018.01306
- Rosen, M. D., Woods, C. R., Goldberg, S. D., Hack, M. D., Bounds, A. D., Yang, Y., et al. (2009). Discovery of the first known small-molecule inhibitors of heme-regulated eukaryotic initiation factor 2 $\alpha$  (HRI) kinase. *Bioorg. Med. Chem. Lett.* 19, 6548–6551. doi: 10.1016/j.bmcl.2009.10.033
- Ruggieri, A., Dazert, E., Metz, P., Hofmann, S., Bergeest, J.-P., Mazur, J., et al. (2012). Dynamic oscillation of translation and stress granule formation mark the cellular response to virus infection. *Cell Host Microbe* 12, 71–85. doi: 10.1016/j.chom.2012.05.013
- Ruvolo, P. P., Gao, F., Blalock, W. L., Deng, X., and Stratford May, W. (2001). Ceramide regulates protein synthesis by a novel mechanism involving the cellular PKR activator RAX. *J. Biol. Chem.* 276, 11754–11758. doi: 10.1074/jbc.M011400200
- Ryoo, H. D., and Vasudevan, D. (2017). Two distinct nodes of translational inhibition in the integrated stress response. *BMB Rep.* 50, 539–545. doi: 10.5483/BMBRep.2017.50.11.157
- Rzymiski, T., Milani, M., Pike, L., Buffa, F., Mellor, H. R., Winchester, L., et al. (2010). Regulation of autophagy by ATF4 in response to severe hypoxia. *Oncogene* 29, 4424–4435. doi: 10.1038/onc.2010.191
- Sanderson, T. H., Deogracias, M. P., Nangia, K. K., Wang, J., Krause, G. S., and Kumar, R. (2010). PKR-like endoplasmic reticulum kinase (PERK) activation following brain ischemia is independent of unfolded nascent proteins. *Neuroscience* 169, 1307–1314. doi: 10.1016/j.neuroscience.2010.05.076
- Saunders, J. R. (1990). Genetic mechanisms for modulating virulence determinants on the bacterial surface. *Sci. Prog.* 74, 279–290.



- Shanina, N. A., Ivanov, P. A., Chudinova, E. M., Severin, F. F., and Nadezhkina, E. S. (2001). Translation initiation factor eIF3 is able to bind with microtubules in mammalian cells. *Mol. Biol. (Mosk)* 35, 638–646.
- Sharma, N. R., Majerciak, V., Kruhlik, M. J., and Zheng, Z.-M. (2017). KSHV inhibits stress granule formation by viral ORF57 blocking PKR activation. *PLoS Pathog* 13:e1006677. doi: 10.1371/journal.ppat.1006677
- Shi, Y., Vattem, K. M., Sood, R., An, J., Liang, J., Stramm, L., et al. (1998). Identification and characterization of pancreatic eukaryotic initiation factor 2  $\alpha$ -Subunit Kinase, PEK, involved in translational control. *Mol. Cell. Biol.* 18, 7499–7509. doi: 10.1128/MCB.18.12.7499
- Shrestha, N., Bahnan, W., Wiley, D. J., Barber, G., Fields, K. A., and Schesser, K. (2012). Eukaryotic initiation factor 2 (eIF2) signaling regulates proinflammatory cytokine expression and bacterial invasion. *J. Biol. Chem.* 287, 28738–28744. doi: 10.1074/jbc.M112.375915
- Shrestha, N., Boucher, J., Bahnan, W., Clark, E. S., Rosqvist, R., Fields, K. A., et al. (2013). The host-encoded Heme Regulator Inhibitor (HRI) facilitates virulence-associated activities of bacterial pathogens. *PLoS One* 8:e68754. doi: 10.1371/journal.pone.0068754
- Siekierka, J., Mauser, L., and Ochoa, S. (1982). Mechanism of polypeptide chain initiation in eukaryotes and its control by phosphorylation of the alpha subunit of initiation factor 2. *Proc. Natl. Acad. Sci. U S A.* 79, 2537–2540. doi: 10.1073/pnas.79.8.2537
- Smith, R., Harris, S. G., Phipps, R., and Iglewski, B. (2002). The *Pseudomonas aeruginosa* quorum-sensing molecule N-(3-oxododecanoyl)homoserine lactone contributes to virulence and induces inflammation in vivo. *J. Bacteriol.* 184:1132.
- Socransky, S. S., Haffajee, A. D., Cugini, M. A., Smith, C., and Kent, R. L. (1998). Microbial complexes in subgingival plaque. *J. Clin. Periodontol.* 25, 134–144. doi: 10.1111/j.1600-051X.1998.tb02419.x
- Song, J., Li, J., Qiao, J., Jain, S., Mark Evers, B., and Chung, D. H. (2009). PKD prevents H<sub>2</sub>O<sub>2</sub>-induced apoptosis via NF- $\kappa$ B and p38 MAPK in RIE-1 cells. *Biochem. Biophys. Res. Commun.* 378, 610–614. doi: 10.1016/j.bbrc.2008.11.106
- Souvanavong, V., Saidji, N., and Chaby, R. (2007). Lipopolysaccharide from *Salmonella enterica* activates NF-kappaB through both classical and alternative pathways in primary B Lymphocytes. *Infect. Immun.* 75:4998. doi: 10.1128/IAI.00545-547
- Spiller, S., Elson, G., Ferstl, R., Dreher, S., Mueller, T., Freudenberg, M., et al. (2008). TLR4-induced IFN- $\gamma$  production increases TLR2 sensitivity and drives Gram-negative sepsis in mice. *J. Exp. Med.* 205, 1747–1754. doi: 10.1084/jem.20071990
- Sriburi, R., Bommiasamy, H., Buldak, G. L., Robbins, G. R., Frank, M., Jackowski, S., et al. (2007). Coordinate regulation of phospholipid biosynthesis and secretory pathway gene expression in XBP-1(S)-induced endoplasmic reticulum biogenesis. *J. Biol. Chem.* 282, 7024–7034. doi: 10.1074/jbc.M609490200
- Sriburi, R., Jackowski, S., Mori, K., and Brewer, J. W. (2004). XBP1: a link between the unfolded protein response, lipid biosynthesis, and biogenesis of the endoplasmic reticulum. (Author Abstract). *J. Cell Biol.* 167:35. doi: 10.1083/jcb.200406136
- Stafford, P., Higham, J., Pinnock, A., Murdoch, C., Douglas, C. W. I., Stafford, G. P., et al. (2013). Gingipain-dependent degradation of mammalian target of rapamycin pathway proteins by the periodontal pathogen *Porphyromonas gingivalis* during invasion. *Mol. Oral Microbiol.* 28, 366–378.
- Steele-Mortimer, O. (2008). The *Salmonella*-containing vacuole—Moving with the times. *Curr. Opin. Microbiol.* 11, 38–45. doi: 10.1016/j.mib.2008.01.002
- Tattoli, I., Sorbara, M. T., Vuckovic, D., Ling, A., Soares, F., Carneiro, L. A. M., et al. (2012). Amino acid starvation induced by invasive bacterial pathogens triggers an innate host defense program. *Cell Host Microbe* 11, 563–575. doi: 10.1016/j.chom.2012.04.012
- Tekletsadik, Y. K., Sonn, R., and Osman, M. A. (2012). A conserved role of IQGAP1 in regulating TOR complex 1. *J. Cell Sci.* 125, 2041–2052. doi: 10.1242/jcs.098947
- Teske, B. F., Fusakio, M. E., Zhou, D., Shan, J., McClintick, J. N., Kilberg, M. S., et al. (2013). CHOP induces activating transcription factor 5 (ATF5) to trigger apoptosis in response to perturbations in protein homeostasis. *Mol. Biol. Cell* 24, 2477–2490. doi: 10.1091/mbc.e13-01-0067
- Toroney, R., Nallagatla, S. R., Boyer, J. A., Cameron, C. E., and Bevilacqua, P. C. (2010). Regulation of PKR by HCV IRES RNA: importance of domain II and NS5A. *J. Mol. Biol.* 400, 393–412. doi: 10.1016/j.jmb.2010.04.059
- Tsutsuki, H., Yahiro, K., Ogura, K., Ichimura, K., Iyoda, S., Ohnishi, M., et al. (2016). Subtilase cytotoxin produced by locus of enterocyte effacement-negative Shiga-toxicogenic *Escherichia coli* induces stress granule formation. *Cell Microbiol.* 18, 1024–1040. doi: 10.1111/cmi.12565
- Tu, Y.-C., Yu, C.-Y., Liang, J.-J., Lin, E., Liao, C.-L., and Lin, Y.-L. (2012). Blocking Double-Stranded RNA-Activated Protein Kinase PKR by Japanese Encephalitis Virus Nonstructural Protein 2A. *J. Virol.* 86, 10347–10358. doi: 10.1128/JVI.00525-512
- Ud-Din, A., and Wahid, S. (2014). Relationship among *Shigella* spp. and enteroinvasive *Escherichia coli* (EIEC) and their differentiation. *Brazilian J. Microbiol.* 45, 1131–1138. doi: 10.1590/S1517-83822014000400002
- Vallejo, M., Ron, D., Miller, C. P., and Habener, J. F. (1993). C/ATF, a member of the activating transcription factor family of DNA-binding proteins, dimerizes with CAAT/enhancer-binding proteins and directs their binding to cAMP response elements. *Proc. Natl. Acad. Sci. U S A.* 90, 4679–4683. doi: 10.1073/pnas.90.10.4679
- van't Wout, E. F. A., van Schadewijk, A., van Boxtel, R., Dalton, L. E., Clarke, H. J., Tommassen, J., et al. (2015). Virulence factors of *Pseudomonas aeruginosa* induce both the unfolded protein and integrated stress responses in airway epithelial cells. *PLoS Pathog* 11:e1004946. doi: 10.1371/journal.ppat.1004946
- Vasil, M. L., and Ochsner, U. A. (1999). The response of *Pseudomonas aeruginosa* to iron: genetics, biochemistry and virulence. *Mol. Microbiol.* 34, 399–413. doi: 10.1046/j.1365-2958.1999.01586.x
- Vonaesch, P., Campbell-Valois, F.-X., Dufour, A., Sansonetti, P. J., and Schnupf, P. (2016). *Shigella flexneri* modulates stress granule composition and inhibits stress granule aggregation. *Cell Microbiol.* 18, 982–997. doi: 10.1111/cmi.12561
- Walter, P., and Ron, D. (2011). The unfolded protein response: from stress pathway to homeostatic regulation. *Science* 334, 1081–1086. doi: 10.1126/science.1209038
- Wek, R. C., Jiang, H.-Y., and Anthony, T. G. (2006). Coping with stress: eIF2 kinases and translational control. *Biochem. Soc. Trans.* 34, 7–11. doi: 10.1042/BST0340007
- Wek, S. A., Zhu, S., and Wek, R. C. (1995). The histidyl-tRNA synthetase-related sequence in the eIF-2 alpha protein kinase GCN2 interacts with tRNA and is required for activation in response to starvation for different amino acids. *Mol. Cell. Biol.* 15, 4497–4506. doi: 10.1128/MCB.15.8.4497
- Whitney, M. L., Jefferson, L. S., and Kimball, S. R. (2009). ATF4 is necessary and sufficient for ER stress-induced upregulation of REDD1 expression. *Biochem. Biophys. Res. Commun.* 379, 451–455. doi: 10.1016/j.bbrc.2008.12.079
- Wild, P., Farhan, H., McEwan, D. G., Wagner, S., Rogov, V. V., Brady, N. R., et al. (2011). Phosphorylation of the autophagy receptor optineurin restricts *Salmonella* growth. *Science* 333, 228–233. doi: 10.1126/science.1205405
- Winter, S. E., Thiennimitr, P., Nuccio, S.-P., Haneda, T., Winter, M. G., Wilson, R. P., et al. (2009). Contribution of flagellin pattern recognition to intestinal inflammation during *Salmonella enterica* Serotype typhimurium infection. *Infect. Immun.* 77, 1904–1916. doi: 10.1128/IAI.01341-1348
- Woo, C. W., Kutzler, L., Kimball, S. R., and Tabas, I. (2012). Toll-like receptor activation suppresses ER stress factor CHOP and translation inhibition through activation of eIF2B. *Nat. Cell Biol.* 14, 192–200. doi: 10.1038/ncb2408
- Wright, S. D., Tobias, P. S., Ulevitch, R. J., and Ramos, R. A. (1989). Lipopolysaccharide (LPS) binding protein opsonizes LPS-bearing particles for recognition by a novel receptor on macrophages. *J. Exp. Med.* 170, 1231–1241. doi: 10.1084/jem.170.4.1231
- Xu, L., Su, L., and Liu, X. (2012). PKC $\delta$  regulates death receptor 5 expression induced by PS-341 through ATF4-ATF3/CHOP axis in human lung cancer cells. *Mol. Cancer Ther.* 11:2174. doi: 10.1158/1535-7163.MCT-12-0602
- Xu, Y., Duan, C., Kuang, Z., Hao, Y., Jeffries, J. L., and Lau, G. W. (2013). *Pseudomonas aeruginosa* pyocyanin activates NRF2-ARE-mediated transcriptional response via the ROS-EGFR-PI3K-AKT/MEK-ERK MAP kinase signaling in pulmonary epithelial cells. *PLoS One* 8:e72528. doi: 10.1371/journal.pone.0072528
- Yamada, H., Nakajima, T., Domon, H., Honda, T., and Yamazaki, K. (2015). Endoplasmic reticulum stress response and bone loss in experimental periodontitis in mice. *J. Periodontol. Res.* 50, 500–508. doi: 10.1111/jre.12232
- Yang, R., Wek, S. A., and Wek, R. C. (2000). Glucose limitation induces GCN4Translation by activation of Gcn2 protein kinase. *Mol. Cell. Biol.* 20, 2706–2717. doi: 10.1128/MCB.20.8.2706-2717.2000

- Yerlikaya, A., and DoKudur, H. (2008). Phosphorylation of eIF2 $\alpha$  in response to 26S proteasome inhibition is mediated by the haem-regulated inhibitor (HRI) kinase. *Biochem. J.* 412, 579–588.
- Young, D., Hussell, T., and Dougan, G. (2002). Chronic bacterial infections: living with unwanted guests. *Nat. Immunol.* 3, 1026–1032. doi: 10.1038/ni1102-1026
- Yu, Q., Zhao, B., Gui, J., Katlinski, K. V., Brice, A., Gao, Y., et al. (2015). Type I interferons mediate pancreatic toxicities of PERK inhibition. *Proc. Natl. Acad. Sci. U S A.* 112, 15420–15425. doi: 10.1073/pnas.1516362112
- Yum, H.-K., Park, I.-N., Shin, B.-M., and Choi, S.-J. (2014). Recurrent *Pseudomonas aeruginosa* infection in chronic lung diseases: relapse or reinfection? *Tuberc. Respir. Dis. (Seoul)*. 77:172. doi: 10.4046/trd.2014.77.4.172
- Zhou, H., Coveney, A. P., Wu, M., Huang, J., Blankson, S., Zhao, H., et al. (2019). Activation of both TLR and NOD signaling confers host innate immunity-mediated protection against microbial infection. *Front. Immunol.* 9:3082. doi: 10.3389/fimmu.2018.03082
- Ziehr, B., Vincent, H. A., and Moorman, N. J. (2016). Human cytomegalovirus pTRS1 and pIRS1 antagonize protein kinase R To facilitate virus replication. *J. Virol.* 90, 3839–3848. doi: 10.1128/JVI.02714-2715

**Conflict of Interest:** The authors declare that the research was conducted in the absence of any commercial or financial relationships that could be construed as a potential conflict of interest.

Copyright © 2021 Knowles, Campbell, Cross and Stafford. This is an open-access article distributed under the terms of the Creative Commons Attribution License (CC BY). The use, distribution or reproduction in other forums is permitted, provided the original author(s) and the copyright owner(s) are credited and that the original publication in this journal is cited, in accordance with accepted academic practice. No use, distribution or reproduction is permitted which does not comply with these terms.