



Binding of *Campylobacter jejuni* FliW Adjacent to the CsrA RNA-Binding Pockets Modulates CsrA Regulatory Activity

Marek Bogacz^{1†}, Faiha M. El Abbar^{1†}, Claudia A. Cox¹, Jiaqi Li¹, Jarred S. Fiedler¹, Lynn K. H. Tran¹, Paul M. H. Tran¹, C. Luke Daugherty¹, Kate H. Blake¹, Zhirui Wang², Parastoo Azadi² and Stuart A. Thompson^{1*}

OPEN ACCESS

Edited by:

Leonard Peruski,
Centers for Disease Control
and Prevention (CDC), United States

Reviewed by:

Daniel B. Kearns,
Indiana University Bloomington,
United States
Lígia M. Saraiva,
New University of Lisbon, Portugal
Patrick Kyle Taylor,
Simon Fraser University, Canada
Jens Kortmann,
Genentech, Inc., United States

*Correspondence:

Stuart A. Thompson
stthomps@augusta.edu

† These authors have contributed
equally to this work

Specialty section:

This article was submitted to
Infectious Diseases,
a section of the journal
Frontiers in Microbiology

Received: 11 March 2020

Accepted: 08 December 2020

Published: 11 January 2021

Citation:

Bogacz M, El Abbar FM, Cox CA,
Li J, Fiedler JS, Tran LKH, Tran PMH,
Daugherty CL, Blake KH, Wang Z,
Azadi P and Thompson SA (2021)
Binding of *Campylobacter jejuni* FliW
Adjacent to the CsrA RNA-Binding
Pockets Modulates CsrA Regulatory
Activity. *Front. Microbiol.* 11:531596.
doi: 10.3389/fmicb.2020.531596

¹ Division of Infectious Diseases, Department of Medicine, Medical College of Georgia, Augusta University, Augusta, GA, United States, ² Complex Carbohydrate Research Center, The University of Georgia, Athens, GA, United States

Campylobacter jejuni CsrA is an mRNA-binding, post-transcriptional regulator that controls many metabolic- and virulence-related characteristics of this important pathogen. In contrast to *E. coli* CsrA, whose activity is modulated by binding to small non-coding RNAs (sRNAs), *C. jejuni* CsrA activity is controlled by binding to the CsrA antagonist FliW. In this study, we identified the FliW binding site on CsrA. Deletion of the C-terminus of *C. jejuni* CsrA, which is extended relative to sRNA-binding CsrA proteins, abrogated FliW binding. Bacterial two-hybrid experiments were used to assess the interaction of FliW with wild-type CsrA and mutants thereof, in which every amino acid was individually mutated. Two CsrA mutations (V51A and N55A) resulted in a significant decrease in FliW binding. The V51A and N55A mutants also showed a decrease in CsrA-FliW complex formation, as assessed by size-exclusion chromatography and surface plasmon resonance. These residues were highly conserved in bacterial species containing CsrA orthologs whose activities are predicted to be regulated by FliW. The location of FliW binding was immediately adjacent to the two RNA-binding sites of the CsrA homodimer, suggesting the model that FliW binding to CsrA modulates its ability to bind to its mRNA targets either by steric hindrance, electrostatic repulsion, or by altering the overall structure of the RNA-binding sites.

Keywords: motility, flagella, biofilm, regulation, flagellin

INTRODUCTION

Campylobacter jejuni is an important human pathogen, and one of the leading bacterial causes of acute gastroenteritis throughout both developed and developing areas of the world (WHO, 2015). *C. jejuni* infection is responsible for the deaths of 20,000–40,000 children each year, primarily in developing countries (GBD Diarrhoeal Diseases Collaborators, 2017). Additionally, ~0.1% of cases of *C. jejuni* infection precede the development of

Guillain-Barré syndrome, an acute paralytic autoimmune disease resulting from molecular mimicry of *C. jejuni* surface antigens to human gangliosides (Nachamkin et al., 2002). Thus, the global burden of disease due to this organism is enormous. Complicating therapy against *Campylobacter* is its rapidly increasing resistance to antibiotics, leading the US Centers for Disease Control and Prevention to classify *Campylobacter* as a serious antibiotic resistance threat (CDC, 2019).

C. jejuni genomes encode a relatively small number of regulatory elements compared to other enteric pathogens (Parkhill et al., 2000), but have the RNA-binding, post-transcriptional regulator CsrA. CsrA proteins bind AnGGA-containing stem loops in target mRNAs, particularly in their 5' untranslated regions (UTRs), affecting their translation and/or mRNA stability (Babitzke and Romeo, 2007). In both *C. jejuni* and *E. coli*, the number of proteins regulated by CsrA can be quite large, with numerous effects on cellular metabolism and pathogenesis (Fields and Thompson, 2008; Edwards et al., 2011; Fields et al., 2016; Li et al., 2018). We previously demonstrated that *C. jejuni* CsrA regulates multiple processes associated with bacterial virulence, as a *csrA* mutant had impaired motility and ability to form biofilm, decreased resistance to oxidative stress, reduced epithelial cell binding and mouse colonization, as well as increased host cell invasion (Fields and Thompson, 2008). Some of these phenotypes could be a result of dysregulated translation of flagellin (*flaA*) mRNA, a known target of *C. jejuni* CsrA (Dugar et al., 2016; Fields et al., 2016; Radomska et al., 2016).

In *E. coli*, CsrA is a homodimer with the two subunits arranged in an antiparallel manner, with each subunit containing five beta strands (β_1 – β_5). Interaction of β_1 of one subunit with β_5 of the opposing subunit forms two identical RNA-binding surfaces (Mercante et al., 2006, 2009). Site-directed mutagenesis (SDM) of both *E. coli* CsrA and *C. jejuni* CsrA elucidated a number of amino acids that affected RNA binding, with amino acid substitutions in β_1 (amino acids 2–7) and β_5 (amino acids 40–47) showing the most profound RNA-binding defects (Mercante et al., 2006; El Abbar et al., 2019). The activities of *E. coli* and closely related CsrA proteins are modulated by competitive binding to inducible small, non-coding RNAs (sRNAs) (Vakulskas et al., 2015). However, *B. subtilis*, *C. jejuni*, and some other CsrA-containing bacteria lack these sRNAs, and CsrA activity is instead regulated by protein-protein interactions with FliW (Mukherjee et al., 2011; Dugar et al., 2016; Radomska et al., 2016; Li et al., 2018). Mutation of *C. jejuni* *fliW* leads to altered expression of flagellar and non-flagellar proteins of the CsrA regulon, further demonstrating the regulatory effects of FliW on CsrA activity (Li et al., 2018).

The purpose of this study was to understand the mechanism by which interaction with FliW leads to altered CsrA activity, by identifying the site of CsrA to which FliW binds. Using a combination of deletion analysis, SDM, bacterial two-hybrid system, size-exclusion chromatography, and surface plasmon resonance, we determined that FliW binds adjacent to the predicted RNA-binding pockets of CsrA. Binding of FliW at this location likely prevents binding of CsrA to target mRNAs by steric hindrance, possible electrostatic repulsion, or by altering the structure of the RNA-binding sites of *C. jejuni* CsrA.

MATERIALS AND METHODS

Bacterial Strains and Growth Conditions

The bacterial strains that were used in this study are listed in **Table 1**. *E. coli* strains were routinely grown in Luria-Bertani (LB) broth or agar at 37°C in an ambient atmosphere. Media were supplemented with antibiotics at the following concentrations when appropriate: ampicillin (Amp), 50 µg/ml; chloramphenicol (Cm), 30 µg/ml. *C. jejuni* was grown in Mueller-Hinton (MH) broth or agar at 42°C in a tri-gas incubator with an atmosphere of 10% O₂, 10% CO₂, and 80% N₂.

Construction and Expression of CsrA C-Terminal Deletion Mutants

Sequential deletions of the C-terminal region of CsrA were constructed by using inverse PCR with the primers listed in **Supplementary Table S1**. PCR primers *csrA*-5.R, *csrA*-10.R, *csrA*-15.R, *csrA*-20.R, and *csrA*-25.R were used in conjunction with primer *csrA*-del.F on pET-20b-CsrA-His₆ template (Fields et al., 2016), to generate derivatives lacking 5, 10, 15, 20, and 25 C-terminal amino acids of CsrA (designated CsrA Δ 5, Δ 10, Δ 15, Δ 20, and Δ 25, respectively). In each case a stop codon was introduced to avoid translation of the His₆ tag. Deletion mutants

TABLE 1 | Bacterial strains and plasmids used in this study.

Strain or plasmid	Description	Resistance	Source or reference
Strain			
<i>Campylobacter jejuni</i>			
81-176	Wild type		Black et al., 1988
<i>Escherichia coli</i>			
DH5 α	Cloning strain		Thermo Fisher Scientific
One Shot Top 10	Cloning strain		Thermo Fisher Scientific
BL21(DE3)pLysS	Protein expression strain	Cm	Promega
SP850	Bacterial two-hybrid host strain		Karimova et al., 1998
Plasmids			
pCR11-TOPO	Cloning vector	Amp, Km	Invitrogen
pT18	Bacterial two-hybrid plasmid expressing <i>cyaT18</i>	Amp	Karimova et al., 1998
pT25	Bacterial two-hybrid plasmid expressing <i>cyaT25</i>	Cm	Karimova et al., 1998
pT18- <i>csrA</i>	pT18 expressing CsrA-T18 fusion protein	Amp	This study
pT25- <i>fliW</i>	pT25 expressing T25-FliW fusion protein	Cm	This study
pET-20b-CsrA-His ₆	<i>csrA</i> cloned into pET-20b(+)	Amp	Fields et al., 2016
pET-20b-FliW-His ₆	<i>fliW</i> cloned into pET-20b(+)	Amp	Li et al., 2018

of CsrA were overexpressed in *E. coli* strain BL21(DE3)pLysS. Cells were grown at 37°C in LB broth containing 50 µg/ml Amp and 30 µg/ml Cm. When cells reached mid-log phase (OD₆₀₀ = 0.5), the expression of the proteins was induced with 0.5 mM IPTG for 3 h.

Protein Production and Purification

CsrA-WT-His₆, CsrA-V51A-His₆, and CsrA-N55A-His₆ were purified as described previously (El Abbar et al., 2019). FliW-His₆ protein was produced in *E. coli* strain BL21(DE3)pLysS. Cells transformed with pET-20b-FliW-His₆ (Li et al., 2018) were grown in Luria-Bertani broth (LB) containing ampicillin and chloramphenicol at 37°C. When the culture reached OD₆₀₀ = 0.6, the expression of the protein was induced with 0.5 mM IPTG for 4 h. Cells were collected by centrifugation and the cell pellet was resuspended in buffer A: 50 mM Tris-HCl, pH 7.4, 300 mM NaCl, 5 mM β-mercaptoethanol, lysed by passing twice through a French Press (Thermo), and centrifuged at 10,000 × g for 10 min. The pellet was subsequently dissolved in buffer B: 50 mM Tris-HCl, pH 7.4, 8 M urea, 5 mM β-mercaptoethanol, and the sample was centrifuged at 15,000 × g to remove insoluble material. Supernatant was mixed with Ni-NTA chromatography resin (Ni-NTA Agarose, Qiagen). After protein binding for 1 h in 4°C, the resin was washed 3 times with 10 resin volumes of buffer B and protein was eluted with buffer C: 50 mM Tris-HCl, pH 7.4, 8 M urea, 5 mM β-mercaptoethanol, 300 mM imidazole. The protein was then diluted to 1 mg/ml with buffer C and refolded by dialysis against buffer E: 50 mM Tris-HCl, pH 7.4, 300 mM NaCl, 0.4 M arginine, 1 mM EDTA, 1 mM glutathione, 0.1 mM glutathione disulfide, and subsequently against buffer F: 20 mM Tris-HCl, pH 7.4, 300 mM NaCl, 5 mM β-mercaptoethanol. Final protein purity was achieved by gel filtration on HiPrep Sephacryl S-100 HR column (GE Healthcare) in buffer F.

Pulldown Assays With FliW and CsrA Wild Type or Mutants

Purified FliW-His₆ protein in 50 mM sodium phosphate, pH 8.0, 300 mM NaCl, 0.01% Tween-20 was incubated with 10 µl of DynabeadsTM His-Tag Isolation & Pulldown (Invitrogen) for 10 min, and the beads were subsequently washed four times with the same buffer. *E. coli* BL21(DE3)pLysS cells expressing wild type CsrA or CsrA proteins containing C-terminal deletions were resuspended in 20 mM sodium phosphate, pH 7.5, 150 mM NaCl, 0.01% Tween-20, and lysed by sonication. Insoluble material was removed by centrifugation at 12,000 × g and lysates were then incubated with FliW-coated beads for 20 min at room temperature. Beads were subsequently washed four times with 300 µl of the same buffer. Protein complexes were eluted from magnetic beads with 50 mM sodium phosphate, pH 7.5, 150 mM NaCl, 300 mM imidazole.

For Western blot analysis, samples were separated on a 15% SDS-PAGE gel and then electroblotted onto PVDF membranes (Millipore). Membranes were probed overnight with 1:200 dilution of primary antibodies against CsrA in TBS-T (Tris-buffered saline, 0.05% Tween 20). After washing twice with TBS-T, horseradish peroxidase-conjugated secondary

goat anti-rabbit antibodies (Bio-Rad, 1:20,000 in TBS-T) were applied. Blots were washed twice and incubated in SuperSignal West Pico Chemiluminescent substrate (Thermo Fisher Scientific). Specific bands were visualized using G:Box imager (Syngene).

Site-Directed Mutagenesis (SDM) and Bacterial Two-Hybrid System

To identify the FliW binding site of CsrA, we used a combination of SDM and the bacterial two-hybrid system described by Karimova et al. (1998) based on reconstitution of adenylate cyclase activity. We first performed SDM to create substitution mutations in which each of the 75 amino acids of CsrA was converted to alanine, with the exception of two native alanine residues (A30 and A36) that were converted to valines. A Q5 SDM kit (NEB) was used for all SDM experiments. For CsrA mutants at amino acid positions 40–60, *csrA* was amplified using PCR with the primers *csrA-KpnI* F and *csrA-HindIII* R (**Supplementary Table S1**), using template DNA of CsrA point mutations previously cloned into pET20b (El Abbar et al., 2019). The PCR products were digested with *KpnI*, *HindIII*, and *DpnI* and cloned into pT18. To create mutations at CsrA amino acid positions 11–39 and 61–67, we used the appropriate SDM primers (**Supplementary Table S1**) with template DNA of *csrA* WT cloned into pT18. For CsrA mutations at amino acid positions 1–10 and 68–75, mutations were designed in the forward PCR primers for 1–10 and in the reverse PCR primers for 68–75. These primers were combined with PCR primers *csrA-HindIII*R or *csrA-KpnI*F, respectively (**Supplementary Table S1**), and used to amplify *csrA* from *C. jejuni* 81–176 chromosomal DNA. Each PCR product was then cloned into pT18. The *fliW* gene was amplified from 81–176 chromosomal DNA using primers *fliW-PstI*F and *fliW-BamHI*R (**Supplementary Table S1**), and was then cloned into pT25 using *PstI* and *BamHI*. We performed bacterial two-hybrid experiments as described (Karimova et al., 1998) to detect the interaction of FliW with WT or mutant CsrA proteins. Briefly, the interaction of FliW with WT or mutant CsrA proteins was assessed by co-expressing CsrA constructs cloned into pT18 with FliW cloned into pT25 in the *E. coli* host strain Sp850 (Karimova et al., 1998). Co-expression of vectors pT18 and pT25 lacking inserts was used as a negative control. β-galactosidase assay (Miller, 1972; Karimova et al., 1998) was performed to measure the degree of interaction between CsrA and FliW.

Analytical Size-Exclusion Chromatography (SEC)

Purified FliW-His₆ protein was mixed with CsrA-His₆ wild-type or mutant proteins in SEC buffer (20 mM sodium phosphate, pH 7.5, 150 mM NaCl, 5 mM MgCl₂, 2 mM DTT) at an equimolar ratio for a final protein concentration of 1 mg/ml, and kept on ice for 30 min. 100 µl of each sample was loaded on a Superdex 200 10/300 GL column (GE Healthcare Life Sciences), and separation was performed in SEC buffer at a flow rate of 0.4 ml/min.

Surface Plasmon Resonance (SPR)

Immobilization

For SPR analysis, FliW-His₆ was immobilized to a Series S sensor chip CM5 (GE Healthcare Life Sciences) via primary amine groups. The immobilization was performed with a BIAcore T100 system (GE Healthcare Life Sciences) programmable method. Separate vials containing 200 μ l of 0.1 M N-hydroxysuccinimide (NHS), 200 μ l of 0.5 M 1-ethyl-3-(3-dimethylaminopropyl)carbodiimide hydrochloride (EDC), 70 μ l of 1 M ethanolamine-HCl and an empty vial for mixing EDC and NHS were placed in the autosampler together with 100 μ l of FliW in 10 mM sodium acetate buffer (pH 4.5). PBS P20 buffer, pH 7.4 was used as the running buffer. The immobilization cycle was performed at a flow rate of 5 μ l/min.

Kinetic Assay

The assay was performed on a BIAcore T100 system (GE Life Sciences). 20 mM phosphate buffer containing 0.05% Tween 20, pH 7.4 was used as running buffer and sample buffer. The kinetic analysis used two flow cells to collect data over a concentration range of 0–500 nM. The association was made by injecting CsrA samples at a constant flow rate of 30 μ L/min for 180 s, followed by 600 s of dissociation. The sensor chip surface was regenerated to remove bound CsrA by injection of 25 μ L of glycine-HCl, pH 2.5 at a constant flow rate of 50 μ L/min. All samples were filtered through a 0.2 μ m filter. Sensograms were analyzed using a bivalent analyte binding model for interaction of a monovalent ligand with analyte molecules that carry two identical and independent binding sites.

Sequence Alignment

CsrA (or its ortholog RsmA) proteins from diverse bacterial species were aligned using ClustalOmega at EMBL-EBI (Sievers et al., 2011; Li et al., 2015). *C. jejuni* (WP_002852854.1), *H. pylori* (WP_120911520.1), *W. succinogenes* (WP_011138784.1), *N. profundicola* (WP_127679601.1), *S. denitrificans* (WP_011372074.1), *T. pallidum* (WP_010882102.1), *B. subtilis* (WP_014478124.1), *C. difficile* (WP_022619991.1), *C. botulinum* (WP_003367280.1), *Geobacillus thermodenitrificans* (WP_011888204.1).

Modeling of CsrA-FliW Interactions

To model interaction of *C. jejuni* CsrA with FliW, we used the only available crystal structure of CsrA containing a C-terminal extension from *G. thermodenitrificans* [PDB: 5DMB (Altegoer et al., 2016)]. Molecular graphics and analyses were performed with UCSF Chimera (Pettersen et al., 2004).

RESULTS

FliW Binds Within the C-Terminal Region of CsrA

Alignment of CsrA proteins from *C. jejuni* and *E. coli* shows both conserved and divergent features (Figure 1A; Fields and Thompson, 2012). Both CsrA proteins are composed of five

β -strands. CsrA from *C. jejuni* is longer (75 amino acids), and its activity is modulated by FliW (Dugar et al., 2016; Radomska et al., 2016; Li et al., 2018). In contrast, *E. coli* CsrA is shorter (61 amino acids) (Figure 1A) and its activity is regulated by binding to sRNAs (Jin et al., 2002; Thomson et al., 2006; Babitzke and Romeo, 2007; Fakhry et al., 2017; Janssen et al., 2018; Potts et al., 2019). As the C-terminus of *C. jejuni* CsrA is longer than the analogous region of CsrA proteins of *E. coli* and other bacteria, whose activities are regulated by sRNAs rather than by FliW (Fields and Thompson, 2012), and adjacent to the most C-terminal β -strand (β_5) that is involved in RNA binding in both *E. coli* and *C. jejuni* (Figure 1A; Mercante et al., 2006; El Abbar et al., 2019), we hypothesized that FliW would bind to this region. We therefore used inverse PCR to construct a series of deletions in the *C. jejuni* 81–176 *csrA* gene cloned into an expression vector (Fields et al., 2016), resulting in a deletion of 5, 10, 15, 20, and 25 amino acids of the C-terminus (lacking a C-terminal His₆ tag, Figure 1A). WT and C-terminally deleted proteins were expressed in *E. coli*, and cell lysates containing these proteins were used in pulldown assays with FliW-His₆ immobilized on magnetic beads (Figure 1B). Bound CsrA was detected using anti-CsrA antibodies. CsrA-WT bound to FliW (Li et al., 2018), as did mutant CsrA proteins lacking the C-terminal 5, 10, and 15 amino acids (Figures 1A,B). However, the deletion of 20 amino acids from the C-terminus of CsrA almost completely abrogated binding, suggesting that at least part of the FliW binding site was located in the region around amino acid 56 of *C. jejuni* CsrA. A CsrA protein containing a 25 amino acid deletion was highly unstable and could not be used in these assays (data not shown).

C. jejuni FliW Binds Adjacent to the Predicted RNA-Binding Pockets of CsrA

To further refine the FliW binding site, we used a combination of SDM and a bacterial two-hybrid system. In this system, potentially interacting proteins are constructed as fusion proteins with two domains (T18 and T25) of the *B. pertussis* adenylate cyclase toxin (Karimova et al., 1998). Positive interaction reconstitutes cAMP synthesis and results in β -galactosidase activity in the *E. coli* reporter strain Sp850 (Karimova et al., 1998). We first cloned the *C. jejuni* *csrA* gene into one of the two hybrid vectors (pT18) and *fliW* in the other (pT25) (Figure 2A). Compared to a control strain containing pT18 and pT25 only, co-expression of pT18-*csrA* and pT25-*fliW* generated significant β -galactosidase activity, indicating positive interaction in this system (Figure 2B). We next performed SDM on *C. jejuni* *csrA* cloned into pT18, changing each amino acid to alanine (except for two native alanine residues, which were changed to valines). Each site-directed mutant was introduced into *E. coli* Sp850 containing pT25-*fliW*. β -galactosidase activities showed that 73 of 75 site-directed mutants had interactions of CsrA and FliW that were not significantly different than WT (Figure 2B). However, CsrA-V51A and CsrA-N55A showed a significant reduction in β -galactosidase activity, demonstrating that these two amino acids are required for binding of FliW to CsrA (Figure 2B). These amino acids lie just C-terminally to amino

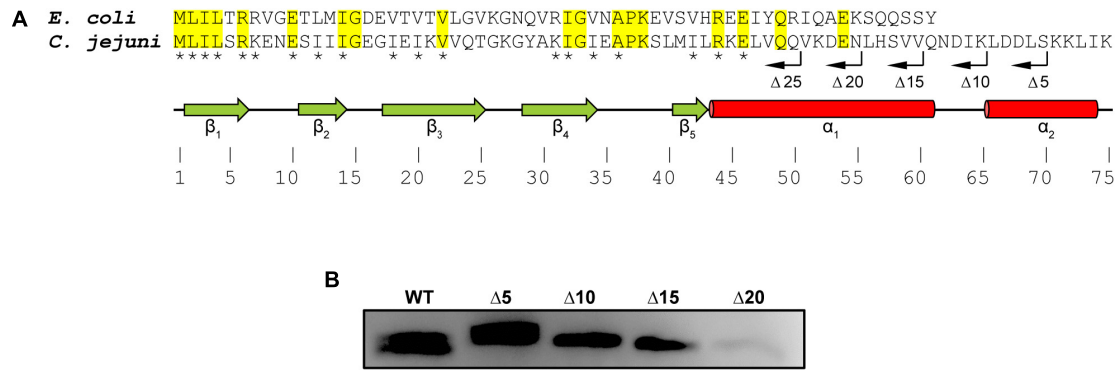


FIGURE 1 | Mapping the FliW-binding region of *C. jejuni* CsrA. **(A)** CsrA proteins from *C. jejuni* and *E. coli* were aligned using ClustalOmega at EMBL-EBI (Sievers et al., 2011; Li et al., 2015). Identical residues are shaded in yellow. Asterisks indicate amino acids that are involved in RNA binding by *C. jejuni* CsrA (El Abbar et al., 2019). Green arrows and red cylinders indicate predicted β -strands and α -helices, respectively. β_1 and β_5 are involved in forming intermolecular RNA-binding interfaces within CsrA homodimer (Mercante et al., 2006). CsrA proteins containing sequential deletions of 5, 10, 15, 20, and 25 amino acids from the CsrA C-terminus ($\Delta 5$, $\Delta 10$, $\Delta 15$, $\Delta 20$, and $\Delta 25$, respectively) are indicated by bent arrows. **(B)** *C. jejuni* CsrA WT and mutant proteins shown in **(A)** were used in pull-down assays with FliW immobilized to magnetic beads. Bound CsrA proteins were detected with antibodies against *C. jejuni* CsrA. Wild-type CsrA and deletions of 5, 10, and 15 C-terminal amino acids retained FliW-binding ability, however, deletion of 20 amino acids from the C-terminus largely abrogated binding to FliW.

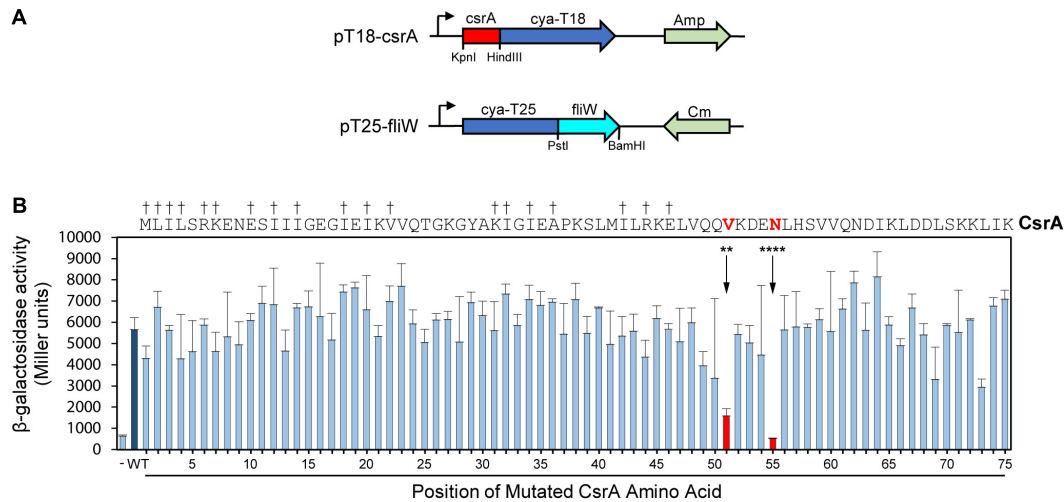


FIGURE 2 | Bacterial two-hybrid assays define CsrA amino acids that play a role in binding FliW. A bacterial two-hybrid assay was used to demonstrate interaction between CsrA and FliW. **(A)** Translational fusions of CsrA and FliW to the T18 and T25 fragments of *B. pertussis* Cya were prepared for use in bacterial two-hybrid experiments. pT18-*csrA* (top) expresses Cya-T18 fused to the C-terminus of CsrA, and pT25-*fliW* (bottom) expresses Cya-T25 fused to the N-terminus of FliW. Amp and Cm were used for selection of the respective plasmids. **(B)** Site-directed mutagenesis was used to individually mutate each CsrA amino acid to alanine (two native alanine residues were mutated to valine). β -galactosidase activity indicates the degree of interaction. Negative control (co-expression of vectors pT18 and pT25 lacking inserts) is represented by first bar (-). Interaction between FliW and CsrA-WT is represented by dark blue bar (WT). CsrA mutants V51A (** $p < 0.01$) and N55A (**** $p < 0.0001$) were the only proteins with significantly reduced FliW binding (shown in red). Mean and SD of three biological replicates (separate colonies) are represented. One-way ANOVA with Dunnnett’s multiple comparisons test was used for statistical analysis (using GraphPad Prism software). Three independent experiments were performed. Daggers indicate amino acids that are involved in RNA binding.

acids involved in RNA binding by *C. jejuni* CsrA (Figure 2B; El Abbar et al., 2019).

CsrA V51A and N55A Have Decreased Affinity to FliW

To confirm that CsrA V51 and N55 were involved in binding FliW, we evaluated the protein-protein interactions of FliW with WT and mutant CsrA, using two *in vitro* methods. In

size-exclusion chromatography experiments, we passed purified FliW-His₆ and CsrA-His₆ (WT, V51A, or N55A) either alone, or mixed in equimolar ratios over a SEC column. FliW-His₆ eluted at a retention volume of 16.9 ml (Figure 3A). Mixture of FliW-His₆ and CsrA-WT-His₆ resulted in a stable heterotetramer of CsrA₂-FliW₂ (Li et al., 2018), with a retention volume of 15.1 ml (Figure 3A). FliW-His₆ and CsrA-V51A-His₆ gave mixture of protein complex and unbound proteins, indicating weaker interaction (Figure 3B). No complex was formed

between FliW-His₆ and CsrA-N55A-His₆ in the equimolar mixture of proteins, indicating lack of protein-protein interaction (Figure 3C). These results are consistent with the findings from two-hybrid experiments (Figure 2B). To further determine the affinities of CsrA WT, V51A, and N55A to FliW, we performed binding assays using surface plasmon resonance. Purified FliW-His₆ was immobilized onto the chip surface and different CsrA-His₆ (WT, V51A, or N55A) concentrations were run over the chip surface to obtain binding parameters (Figures 3D–F). Data followed a bivalent analyte binding model, confirming that one molecule of CsrA dimer is able to bind two molecules of FliW. The K_D for the first ligand binding site of CsrA-WT was calculated to be 9×10^{-9} M, showing strong binding (Figure 3D). As expected from the SEC experiment, the affinity of CsrA-V51A to FliW was reduced 6-fold ($K_D = 5.2 \times 10^{-8}$ M), while binding of CsrA-N55A was decreased 10-fold ($K_D = 9.3 \times 10^{-8}$ M) (Figures 3E,F). Taken together, our results from the two-hybrid assay and both *in vitro* binding assays indicate that amino acids V51 and N55 are crucial for full FliW binding by CsrA.

CsrA V51 and N55 Are Conserved Among Diverse Bacteria Species

We next examined CsrA proteins for conservation of these FliW-binding amino acids among diverse bacteria expressing CsrA proteins with extended C-terminal regions and containing FliW. Comparison of these proteins showed that N55 was identical in CsrA proteins from all species examined (Figure 4A). V51 was identical in five of the species examined, while in the other five species this position was occupied by the conservative substitution isoleucine.

FliW-Binding Amino Acids of CsrA Are Not Involved in CsrA-mRNA Interaction

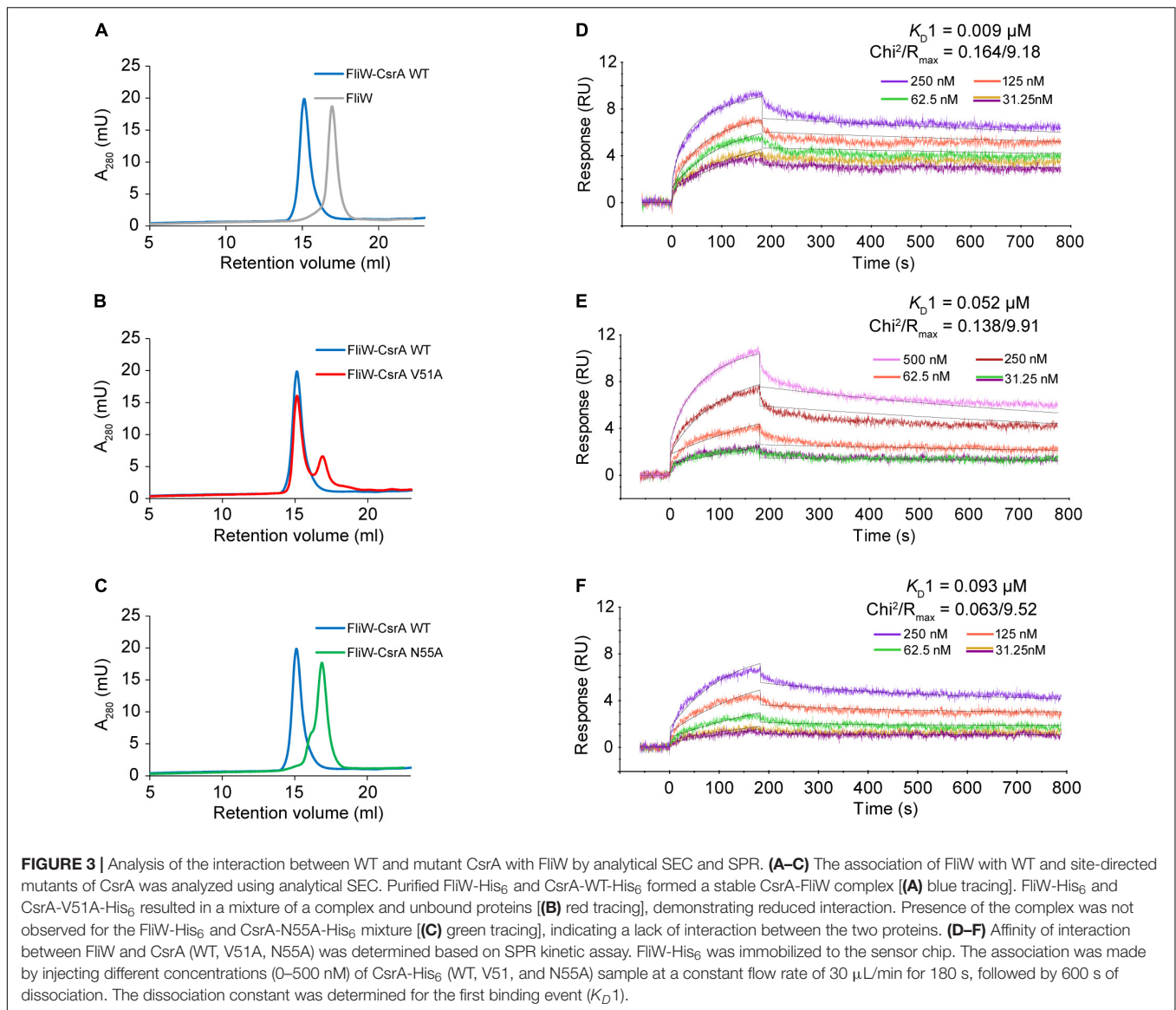
A crystal structure of *C. jejuni* CsrA is not currently available. To model CsrA-FliW interactions, we used the published structure of CsrA from *G. thermodenitrificans* (Altegoer et al., 2016; Figure 4B). The CsrA proteins from *G. thermodenitrificans* and *C. jejuni* are 38% identical/60% similar, and both have extended C-terminal regions compared to *E. coli* CsrA (Fields and Thompson, 2012). Validity of this model was further emphasized by the fact that CsrA amino acid residues V51 and N55 correspond to isoleucine and asparagine in the CsrA ortholog from *G. thermodenitrificans*, respectively. According to this structure, a symmetrical homodimer of CsrA binds two molecules of FliW on the opposite sides of the molecule. The amino acids with roles in FliW binding lie within the first α -helix C-terminally adjacent to the RNA-binding site. These are distinct from residues that were shown previously to play a role in mRNA binding by *C. jejuni* CsrA, which mainly occupy positions within the β -strands in the core of the CsrA homodimer (Figures 1A, 4B; El Abbar et al., 2019). They are however predicted to be located adjacent to the RNA-binding groove at the edge of the CsrA dimer β -sheet, which in this model is adjacent to the aforementioned α -helix (Figure 4B). As amino acids involved in interaction with FliW seem not to be necessary for mRNA

binding, we propose that FliW inhibition of CsrA regulatory activity does not rely on direct competition for the CsrA RNA-binding site.

DISCUSSION

We previously showed that CsrA is a pleiotropic post-transcriptional regulator in *C. jejuni*, modulating the expression of numerous proteins including FlaA flagellin (Fields and Thompson, 2008; Fields et al., 2016; Li et al., 2018). In multiple bacteria including *C. jejuni*, CsrA regulatory activity is controlled by protein-protein interactions with FliW (Mukherjee et al., 2011, 2013; Dugar et al., 2016; Fields et al., 2016; Radomska et al., 2016; Li et al., 2018). In *B. subtilis*, homeostatic control of flagellin (Hag) expression is achieved by maintaining a 1:1:1 ratio of Hag:FliW:CsrA that ensures proper expression of Hag subunits during flagellar synthesis (Oshiro et al., 2019). In *C. jejuni*, mutation of *fliW* results in decreased synthesis of flagellin, while a double *fliW* and *csrA* mutation leads to increased flagellin levels (Dugar et al., 2016; Radomska et al., 2016; Li et al., 2018). A *C. jejuni* *fliW* mutant has markedly shortened flagella, but its length is restored in the double *fliWcsrA* mutant (Dugar et al., 2016; Li et al., 2018). This clearly indicates that the defect of flagellar synthesis is dependent on the regulatory interplay between these two proteins, rather than the lack of FliW chaperone activity. Furthermore, FliW was the first protein described to interact with CsrA (Mukherjee et al., 2011), representing a novel mechanism of CsrA regulation by protein partners rather than sRNAs. The mechanism by which *C. jejuni* FliW antagonizes CsrA inhibitory activity remains poorly understood, therefore the aim of this study was to define the protein-protein interactions between *C. jejuni* CsrA and FliW. Here we show that in *C. jejuni* CsrA binds FliW at a site adjacent to its predicted RNA-binding sites, thus inhibiting CsrA regulatory activity on target mRNAs.

Alignment of CsrA proteins from diverse bacteria revealed that CsrA in *C. jejuni*, *H. pylori*, and other bacteria in which CsrA-regulating sRNAs are not present have an extended C-terminal region (Fields and Thompson, 2012). We reasoned that this was a likely site for interaction with FliW as it was previously indicated in *G. thermodenitrificans* (Altegoer et al., 2016). C-terminal deletion analysis showed that although somewhat unexpectedly the deletion of 15 amino acids had no appreciable effect on FliW binding, the interaction occurs in this region but not strictly within the extension itself (Figure 1). The $\Delta 20$ deletion (deletion of CsrA amino acids 56–75) showed greatly reduced FliW binding, despite significant expression of CsrA $\Delta 20$ in the *E. coli* lysates used for the pull-downs (data not shown). Nevertheless, the deletion studies defined amino acids 61–75 of *C. jejuni* CsrA as non-essential for FliW binding, and suggested that amino acids 56–61 were at least adjacent to the binding site. To comprehensively determine which amino acids were crucial for FliW binding, we used a bacterial two-hybrid system and saturating alanine scanning mutagenesis to assess CsrA-FliW interaction. In these studies, we identified two residues, V51 and N55, as crucial for full FliW binding (Figure 2B). These two



amino acids actually lie just N-terminal to the CsrA C-terminal amino acids that were deleted in the binding experiments presented in **Figure 1**. This suggests that while N55 is critical for binding, the location of N55 at the extreme C-terminus of the truncated protein does not allow full binding. This is likely because the local structural context of CsrA N55 must be maintained for full binding of FliW to occur (see also below).

To substantiate the roles of CsrA V51 and N55 in binding to FliW, these findings were further confirmed *in vitro* using gel filtration of equimolar mixtures of CsrA (WT, V51A, or N55A) with FliW (**Figures 3A–C**) and by assessing the binding affinities with surface plasmon resonance (**Figures 3D–F**). We show that the affinity of WT CsrA-FliW interaction is high such that in an equimolar mixture of the two proteins, the entire fraction of FliW is complexed with CsrA (**Figures 3A,D**). While the V51A mutation showed a 6-fold reduction of affinity, the N55A mutation led to a strong reduction of the binding strength

(10-fold) which resulted in undetectable levels of the complex *in vitro* (**Figures 3C,F**).

Those *in vitro* data align with the degree of FliW binding inhibition observed in two-hybrid experiments. We found that V51 and especially N55 are highly conserved among species in which CsrA contains the C-terminal extension, with N55 being conserved in all analyzed species and V51 being either identical or conservatively substituted with isoleucine (**Figure 4A**; Fields and Thompson, 2012). Furthermore, the importance of residue N55 in FliW binding was originally shown in the phylogenetically distant *B. subtilis*, where mutation of this highly conserved asparagine to aspartic acid prevented FliW binding by CsrA (Mukherjee et al., 2016).

Although the structure of *C. jejuni* CsrA is not yet available, structural details of a CsrA-FliW complex have been studied in *G. thermodenitrificans* (Altegoer et al., 2016). In this structure, I52 and N56 (corresponding to *C. jejuni* V51 and N55, respectively)

binding was similarly shown not to require the mRNA binding residues of CsrA (Altegoer et al., 2016).

In summary, *C. jejuni* controls the expression of numerous metabolic and virulence-related proteins by means of the CsrA-FliW regulatory system. The role of FliW in regulating CsrA activity and the expression of FlaA links *C. jejuni* metabolism with its critical virulence factor of cellular motility and invasion. Our results define the nature of the *C. jejuni* CsrA-FliW interaction and open the possibility of targets for therapeutic intervention.

DATA AVAILABILITY STATEMENT

All datasets generated for this study are included in the article/**Supplementary Material**.

AUTHOR CONTRIBUTIONS

MB, FE, CC, JL, JF, LT, PT, CD, KB, ZW, PA, and ST contributed to the conception and design of the study, and performed experiments described in the manuscript. MB wrote the first draft of the manuscript. MB, FE, and ST wrote sections of the manuscript. All authors contributed to manuscript revision, read and approved the submitted version.

REFERENCES

- Altegoer, F., Rensing, S. A., and Bange, G. (2016). Structural basis for the CsrA-dependent modulation of translation initiation by an ancient regulatory protein. *Proc. Natl. Acad. Sci. U.S.A.* 113, 10168–10173. doi: 10.1073/pnas.1602425113
- Babitzke, P., and Romeo, T. (2007). CsrB sRNA family: sequestration of RNA-binding regulatory proteins. *Curr. Opin. Microbiol.* 10, 156–163. doi: 10.1016/j.mib.2007.03.007
- Black, R. E., Levine, M. M., Clements, M. L., Hughes, T. P., and Blaser, M. J. (1988). Experimental *Campylobacter jejuni* infection in humans. *J. Infect. Dis.* 157, 472–479. doi: 10.1093/infdis/157.3.472
- CDC. (2019). *Antibiotic Resistance Threats in the United States, 2019*. Atlanta, GA: CDC.
- Dugar, G., Svensson, S. L., Bischler, T., Waldchen, S., Reinhardt, R., and Sauer, M. (2016). The CsrA-FliW network controls polar localization of the dual-function flagellin mRNA in *Campylobacter jejuni*. *Nat. Commun.* 7:11667. doi: 10.1038/ncomms11667
- Edwards, A. N., Patterson-Fortin, L. M., Vakulskas, C. A., Mercante, J. W., Potrykus, K., and Vinella, D. (2011). Circuitry linking the Csr and stringent response global regulatory systems. *Mol. Microbiol.* 80, 1561–1580. doi: 10.1111/j.1365-2958.2011.07663.x
- El Abbar, F. M., Li, J., Owen, H. C., Daugherty, C. L., Fulmer, C. A., and Bogacz, M. (2019). RNA binding by the *Campylobacter jejuni* post-transcriptional regulator CsrA. *Front. Microbiol.* 10:1776. doi: 10.3389/fmicb.2019.01776
- Fakhry, C. T., Kulkarni, P., Chen, P., Kulkarni, R., and Zarringhalam, K. (2017). Prediction of bacterial small RNAs in the RsmA (CsrA) and ToxT pathways: a machine learning approach. *BMC Genomics* 18:645. doi: 10.1186/s12864-017-4057-z

FUNDING

The research described in this manuscript was funded by the National Institutes of Health grants 5R01AI103267 and 1R56AI084160, and an Intramural Grant from Augusta University (all to ST). Surface plasmon resonance studies were supported by the Chemical Sciences, Geosciences and Biosciences Division, Office of Basic Energy Sciences, U.S. Department of Energy grant DE-SC0015662 (to PA). PT was funded by National Institutes of Health grant F30DK12146101A1.

ACKNOWLEDGMENTS

Components of the bacterial two-hybrid system were a kind gift from Vic DiRita, Michigan State University. UCSF Chimera, which was used for the visualization of protein structure, was developed by the Resource for Biocomputing, Visualization, and Informatics at the University of California, San Francisco, with support from NIH P41-GM103311. Portions of this research were contained in the doctoral thesis of FE.

SUPPLEMENTARY MATERIAL

The Supplementary Material for this article can be found online at: <https://www.frontiersin.org/articles/10.3389/fmicb.2020.531596/full#supplementary-material>

- Fields, J. A., Li, J., Gulbranson, C. J., Hendrixson, D. R., and Thompson, S. A. (2016). *Campylobacter jejuni* CsrA regulates metabolic and virulence associated proteins and is necessary for mouse colonization. *PLoS One* 11:e0156932. doi: 10.1371/journal.pone.0156932
- Fields, J. A., and Thompson, S. A. (2008). *Campylobacter jejuni* CsrA mediates oxidative stress responses, biofilm formation, and host cell invasion. *J. Bacteriol.* 190, 3411–3416. doi: 10.1128/JB.01928-07
- Fields, J. A., and Thompson, S. A. (2012). *Campylobacter jejuni* CsrA complements an *Escherichia coli* csrA mutation for the regulation of biofilm formation, motility and cellular morphology but not glycogen accumulation. *BMC Microbiol.* 12:233. doi: 10.1186/1471-2180-12-233
- GBD Diarrhoeal Diseases Collaborators. (2017). Estimates of global, regional, and national morbidity, mortality, and aetiologies of diarrhoeal diseases: a systematic analysis for the Global Burden of Disease Study 2015. *Lancet Infect. Dis.* 7, 909–948. doi: 10.1016/S1473-3099(17)30276-1
- Gutierrez, P., Li, Y., Osborne, M. J., Pomerantseva, E., Liu, Q., and Gehring, K. (2005). Solution structure of the carbon storage regulator protein CsrA from *Escherichia coli*. *J. Bacteriol.* 187, 3496–3501. doi: 10.1128/JB.187.10.3496-3501.2005
- Heeb, S., Kuehne, S. A., Bycroft, M., Crivii, S., Allen, M. D., and Haas, D. (2006). Functional analysis of the post-transcriptional regulator RsmA reveals a novel RNA-binding site. *J. Mol. Biol.* 355, 1026–1036. doi: 10.1016/j.jmb.2005.11.045
- Janssen, K. H., Diaz, M. R., Golden, M., Graham, J. W., Sanders, W., and Wolfgang, M. C. (2018). Functional analyses of the RsmY and RsmZ small noncoding regulatory RNAs in *Pseudomonas aeruginosa*. *J. Bacteriol.* 200:e00736-17. doi: 10.1128/JB.00736-17
- Jin, Q., Yuan, Z., Xu, J., Wang, Y., Shen, Y., and Lu, W. (2002). Genome sequence of *Shigella flexneri* 2a: insights into pathogenicity through comparison with genomes of *Escherichia coli* K12 and O157. *Nucleic Acids Res.* 30, 4432–4441. doi: 10.1093/nar/gkf566

- Karimova, G., Pidoux, J., Ullmann, A., and Ladant, D. (1998). A bacterial two-hybrid system based on a reconstituted signal transduction pathway. *Proc. Natl. Acad. Sci. U.S.A.* 95, 5752–5756. doi: 10.1073/pnas.95.10.5752
- Katsowich, N., Elbaz, N., Pal, R. R., Mills, E., Kobi, S., and Kahan, T. (2017). Host cell attachment elicits posttranscriptional regulation in infecting enteropathogenic bacteria. *Science* 355, 735–739. doi: 10.1126/science.aah4886
- Li, J., Gulbranson, C. J., Bogacz, M., Hendrixson, D. R., and Thompson, S. A. (2018). FliW controls growth-phase expression of *Campylobacter jejuni* flagellar and non-flagellar proteins via the post-transcriptional regulator CsrA. *Microbiology* 164, 1308–1319. doi: 10.1099/mic.0.000704
- Li, W., Cowley, A., Uludag, M., Gur, T., McWilliam, H., and Squizzato, S. (2015). The EMBL-EBI bioinformatics web and programmatic tools framework. *Nucleic Acids Res.* 43, W580–W584. doi: 10.1093/nar/gkv279
- Mercante, J., Edwards, A. N., Dubey, A. K., Babitzke, P., and Romeo, T. (2009). Molecular geometry of CsrA (RsmA) binding to RNA and its implications for regulated expression. *J. Mol. Biol.* 392, 511–528. doi: 10.1016/j.jmb.2009.07.034
- Mercante, J., Suzuki, K., Cheng, X., Babitzke, P., and Romeo, T. (2006). Comprehensive alanine-scanning mutagenesis of *Escherichia coli* CsrA defines two subdomains of critical functional importance. *J. Biol. Chem.* 281, 31832–31842. doi: 10.1074/jbc.M606057200
- Miller, J. H. (1972). *Experiments in Molecular Genetics*. Cold Spring Harbor, NY: Cold Spring Harbor Laboratory Press.
- Mukherjee, S., Babitzke, P., and Kearns, D. B. (2013). FliW and FliS function independently to control cytoplasmic flagellin levels in *Bacillus subtilis*. *J. Bacteriol.* 195, 297–306. doi: 10.1128/JB.01654-12
- Mukherjee, S., Oshiro, R. T., Yakhnin, H., Babitzke, P., and Kearns, D. B. (2016). FliW antagonizes CsrA RNA binding by a noncompetitive allosteric mechanism. *Proc. Natl. Acad. Sci. U.S.A.* 113, 9870–9875. doi: 10.1073/pnas.1602455113
- Mukherjee, S., Yakhnin, H., Kysela, D., Sokolowski, J., Babitzke, P., and Kearns, D. B. (2011). CsrA-FliW interaction governs flagellin homeostasis and a checkpoint on flagellar morphogenesis in *Bacillus subtilis*. *Mol. Microbiol.* 82, 447–461. doi: 10.1111/j.1365-2958.2011.07822.x
- Nachamkin, I., Liu, J., Li, M., Ung, H., Moran, A. P., and Prendergast, M. M. (2002). *Campylobacter jejuni* from patients with Guillain-Barre syndrome preferentially expresses a GD(1a)-like epitope. *Infect. Immun.* 70, 5299–5303. doi: 10.1128/iai.70.9.5299-5303.2002
- Oshiro, R. T., Rajendren, S., Hundley, H. A., and Kearns, D. B. (2019). Robust stoichiometry of FliW-CsrA governs flagellin homeostasis and cytoplasmic organization in *Bacillus subtilis*. *mBio* 10:e00533-19. doi: 10.1128/mBio.00533-19
- Parkhill, J., Wren, B. W., Mungall, K., Ketley, J. M., Churcher, C., and Basham, D. (2000). The genome sequence of the food-borne pathogen *Campylobacter jejuni* reveals hypervariable sequences. *Nature* 403, 665–668. doi: 10.1038/35001088
- Pettersen, E. F., Goddard, T. D., Huang, C. C., Couch, G. S., Greenblatt, D. M., and Meng, E. C. (2004). UCSF Chimera—a visualization system for exploratory research and analysis. *J. Comput. Chem.* 25, 1605–1612. doi: 10.1002/jcc.20084
- Potts, A. H., Guo, Y., Ahmer, B. M. M., and Romeo, T. (2019). Role of CsrA in stress responses and metabolism important for *Salmonella* virulence revealed by integrated transcriptomics. *PLoS One* 14:e0211430. doi: 10.1371/journal.pone.0211430
- Radomska, K. A., Ordóñez, S. R., Wosten, M. M., Wagenaar, J. A., and van Putten, J. P. (2016). Feedback control of *Campylobacter jejuni* flagellin levels through reciprocal binding of FliW to flagellin and the global regulator CsrA. *Mol. Microbiol.* 102, 207–220. doi: 10.1111/mmi.13455
- Rife, C., Schwarzenbacher, R., McMullan, D., Abdubek, P., Ambing, E., and Axelrod, H. (2005). Crystal structure of the global regulatory protein CsrA from *Pseudomonas putida* at 2.05 Å resolution reveals a new fold. *Proteins* 61, 449–453. doi: 10.1002/prot.20502
- Schubert, M., Lapouge, K., Duss, O., Oberstrass, F. C., Jelesarov, I., and Haas, D. (2007). Molecular basis of messenger RNA recognition by the specific bacterial repressing clamp RsmA/CsrA. *Nat. Struct. Mol. Biol.* 14, 807–813. doi: 10.1038/nsmb1285
- Sievers, F., Wilm, A., Dineen, D., Gibson, T. J., Karplus, K., and Li, W. (2011). Fast, scalable generation of high-quality protein multiple sequence alignments using Clustal Omega. *Mol. Syst. Biol.* 7:539. doi: 10.1038/msb.2011.75
- Thomson, N. R., Howard, S., Wren, B. W., Holden, M. T., Crossman, L., and Challis, G. L. (2006). The complete genome sequence and comparative genome analysis of the high pathogenicity *Yersinia enterocolitica* strain 8081. *PLoS Genet.* 2:e206. doi: 10.1371/journal.pgen.0020206
- Vakulskas, C. A., Potts, A. H., Babitzke, P., Ahmer, B. M., and Romeo, T. (2015). Regulation of bacterial virulence by Csr (Rsm) systems. *Microbiol. Mol. Biol. Rev.* 79, 193–224. doi: 10.1128/MMBR.00052-14
- WHO, (2015). *WHO Estimates of the Global Burden of Foodborne Diseases: Foodborne Disease Burden Epidemiology Reference Group 2007-2015*. Geneva: World Health Organization.
- Ye, F., Yang, F., Yu, R., Lin, X., Qi, J., and Chen, Z. (2018). Molecular basis of binding between the global post-transcriptional regulator CsrA and the T3SS chaperone CesT. *Nat. Commun.* 9:1196. doi: 10.1038/s41467-018-03625-x

Conflict of Interest: The authors declare that the research was conducted in the absence of any commercial or financial relationships that could be construed as a potential conflict of interest.

Copyright © 2021 Bogacz, El Abbar, Cox, Li, Fiedler, Tran, Tran, Daugherty, Blake, Wang, Azadi and Thompson. This is an open-access article distributed under the terms of the Creative Commons Attribution License (CC BY). The use, distribution or reproduction in other forums is permitted, provided the original author(s) and the copyright owner(s) are credited and that the original publication in this journal is cited, in accordance with accepted academic practice. No use, distribution or reproduction is permitted which does not comply with these terms.