



# Involvement of *PaSNF1* in Fungal Development, Sterigmatocystin Biosynthesis, and Lignocellulosic Degradation in the Filamentous Fungus *Podospora anserina*

Yuanjing Li<sup>1</sup>, Pengfei Yan<sup>2</sup>, Xiaojie Lu<sup>1</sup>, Yanling Qiu<sup>1</sup>, Shang Liang<sup>1</sup>, Gang Liu<sup>1</sup>, Shuangfei Li<sup>1</sup>, Lin Mou<sup>1</sup> and Ning Xie<sup>1\*</sup>

<sup>1</sup> Shenzhen Key Laboratory of Microbial Genetic Engineering, College of Life Sciences and Oceanography, Shenzhen University, Shenzhen, China, <sup>2</sup> Key Laboratory of Functional Inorganic Material Chemistry (MOE), School of Chemistry and Materials Science, Heilongjiang University, Harbin, China

## OPEN ACCESS

### Edited by:

Guodong Liu,  
Shandong University, China

### Reviewed by:

Shuai Zhao,  
Guangxi University, China  
Robert Debuchy,  
Centre National de la Recherche  
Scientifique (CNRS), France

### \*Correspondence:

Ning Xie  
ning.xie@szu.edu.cn

### Specialty section:

This article was submitted to  
Fungi and Their Interactions,  
a section of the journal  
Frontiers in Microbiology

Received: 29 December 2019

Accepted: 27 April 2020

Published: 10 June 2020

### Citation:

Li Y, Yan P, Lu X, Qiu Y, Liang S,  
Liu G, Li S, Mou L and Xie N (2020)  
Involvement of *PaSNF1* in Fungal  
Development, Sterigmatocystin  
Biosynthesis, and Lignocellulosic  
Degradation in the Filamentous  
Fungus *Podospora anserina*.  
*Front. Microbiol.* 11:1038.  
doi: 10.3389/fmicb.2020.01038

The sucrose non-fermenting 1/AMP-activated protein kinase (SNF1/AMPK) is a central regulator of carbon metabolism and energy production in the eukaryotes. In this study, the functions of the *Podospora anserina* SNF1 (*PaSNF1*) ortholog were investigated. The  $\Delta PaSNF1$  mutant displays a delayed development of mycelium and fruiting bodies and fails to form ascospores. The expression of the *PaSNF1* gene in the strain providing female organs in a cross is sufficient to ensure fertility, indicating a maternal effect. Results of environmental stress showed that  $\Delta PaSNF1$  was hypersensitive to stress, such as osmotic pressure and heat shock, and resistant to fluconazole. Interestingly, the knockout of *PaSNF1* significantly promoted sterigmatocystin (ST) synthesis but suppressed cellulase [filter paperase (FPA), endoglucanase (EG), and  $\beta$ -glucosidase (BG)] activity. Further, transcriptome analysis indicated that *PaSNF1* made positive regulatory effects on the expression of genes encoding cellulolytic enzymes. These results suggested that *PaSNF1* may function in balancing the operation of primary and secondary metabolism. This study suggested that SNF1 was a key regulator concerting vegetative growth, sexual development, and stress tolerance. Our study provided the first genetic evidence that SNF1 was involved in the ST biosynthesis and that it may also be a major actor of lignocellulose degradation in *P. anserina*.

**Keywords:** *Podospora anserina*, sucrose non-fermenting 1, sexual development, stress tolerance, secondary metabolism, lignocellulose degradation

## INTRODUCTION

Lignocellulose is one of the most abundant renewable resources on earth, mainly composed of cellulose, hemicellulose, and lignin (Jonsson et al., 2013). It can be converted into different carbohydrates, including glucose, xylose, and aromatic monomer compounds, which could be applied for the production of ethanol, carbohydrates, and aromatic products (Ragauskas et al., 2014; Kawaguchi et al., 2016; Wu et al., 2018). It has promising applications in food, paper,

and textile industries as well as the production of biofuels and other chemicals (Paulova et al., 2015; Kubicek and Kubicek, 2016; Yenkie et al., 2016). However, the commercial applications of lignocellulosic degradation in the production of biofuels and chemicals were limited by its complex structure, biological obstinacy, low efficiency, and high cost, thus hindering the effective utilization of the raw material in green technology (Weng et al., 2008; Paulova et al., 2015). Biodegradation of lignocellulose into fermentable sugars with cellulase [including Carbohydrate-Active Enzymes (CAZy)] has been an environmental-friendly approach (Gupta et al., 2016). Filamentous fungi were considered as promising candidates for producing lignocellulolytic enzymes (Couturier et al., 2016).

Filamentous fungi and their enzymes show great potential in the degradation of tough lignocellulose (Bomble et al., 2017). Some ascomycetes such as *Trichoderma reesei* and *Aspergillus nidulans* have been commonly applied in the industrial production of cellulase and hemicellulase (de Assis et al., 2015; Bischof et al., 2016). Many cellulose and lignin degradation-associated enzymes were found in the filamentous fungus *Podospora anserina*, making this fungus a model to elucidate the enzymatic decomposition of plant biomass (Couturier et al., 2016). Recent studies have shown that catalase, laccase, and bilirubin oxidase participated in the degradation of cellulose in *P. anserina* (Bourdais et al., 2012; Xie et al., 2014, 2015). The regulation mechanism of cellulase and hemicellulase gene expression has been extensively investigated (Benocci et al., 2017). In cellulolytic fungi, several key transcriptional activators as well as repressors have been involved in this regulation. For example, the transcription factor XlnR/XYR1 regulated the expression of cellulase and hemicellulase genes in *Aspergillus niger*, *Neurospora crassa*, and *T. reesei*, respectively (Stricker et al., 2008; Sun et al., 2012; Dos Santos, Castro et al., 2016). In addition, the transcription factors CLR-1 and CLR-2 were essential for growth on cellulose in *N. crassa* (Coradetti et al., 2012). Recent studies have shown that the CLR-4 acted as a positive activator of cellulase expression by directly binding to the promoters of CLR-1 and CLR-2 (Liu et al., 2019). CLR-3 repressed the cellulolytic response through CLR-1 (Huberman et al., 2017). The conserved zinc-finger transcription factor Cre1/CreA was the key factor in mediating carbon catabolite repression (CCR), an important mechanism for suppressing cellulase production during growth on favorably metabolized carbon source, such as glucose (Sun and Glass, 2011; Lichius et al., 2014). Deletion of Cre1/CreA alleviated some aspects of CCR for cellulolytic enzyme expression in *Penicillium decumbens* and *N. crassa* (Sun and Glass, 2011; Liu et al., 2013). Therefore, transcriptional activation or repression via nutrient sensing pathways has also been essential for inducing the lignocellulolytic response.

Sucrose non-fermenting 1/AMP-activated protein kinase (SNF1/AMPK kinases) was regarded as an important regulator that participated in the development of fungi and activation of catabolite-repressed genes (Lee et al., 2009; Ghillebert et al., 2011). In yeast, as a heterotrimer kinase complex, SNF1 contained  $\alpha$ -subunit encoded by *SNF1*;  $\beta$ -subunits encoded by *GAL83*, *SIP1*, and *SIP2*; and  $\gamma$ -subunit encoded by *SNF4*. The SNF1 complex can be activated by three upstream kinases

(Sak1, Elm1, and Tos3) via phosphorylation (Hedbacker and Carlson, 2008), whereas it could also be inactivated by Reg1-Glc7 protein phosphatase (Sanz et al., 2000). The regulation of SNF1 activity played a central role in the alleviation of CCR, for both *Saccharomyces cerevisiae* and the majority of filamentous fungi (Brown et al., 2013). In yeast, under the glucose starvation, Mig1 was phosphorylated by SNF1, inducing the de-repression of glucose repressed genes. Studies have shown that the CCR mechanism was different in filamentous fungi and yeast. CreA, a Mig1 homolog, was a critical regulator of carbon catabolism inhibition in the lignocellulolytic fungus *A. nidulans* and the orthologous SNF1 kinase was essential for CreA/Cre1 de-repression (Brown et al., 2013). However, homologous proteins of Cre1 could not be phosphorylated by homologous proteins of SNF1 in *T. reesei* (Cziferszky et al., 2003). Overall, it was unclear whether there was a conserved mechanism for SNF1 to regulate carbon catabolite in filamentous fungi. Little was known about the functions of SNF1 in the fungal development and lignocellulosic degradation.

Besides, SNF1 complex participated in a wide variety of physiological processes, such as fungal meiosis, spore formation, filamentous growth, and biofilm formation (Lee et al., 2009; Ghillebert et al., 2011). It was also involved in the response to environmental stresses, such as salt stress, heat shock, alkaline pH, and endoplasmic reticulum stress (Hahn and Thiele, 2004; Hong and Carlson, 2007; Casamayor et al., 2012; Ferrer-Dalmau et al., 2015). For many pathogenic filamentous fungi, SNF1 genes showed critical roles in fungal development and virulence, such as *Magnaporthe oryzae* (Yi et al., 2008), *Gibberella zeae* (Lee et al., 2009), *Verticillium dahlia* (Tzima et al., 2011), *Penicillium digitatum* (Zhang et al., 2013), *Beauveria bassiana* (Wang et al., 2014), *Leptosphaeria maculans* (Feng et al., 2014), and *Fusarium virguliforme* (Islam et al., 2017). The lack of SNF1 led to inhibitory expression of cell-wall-degrading enzymes, damage of sporulation, and spore germination; thus, its virulence on the hosts would be impaired.

Biosynthesis of secondary metabolites (SMs) may be tightly regulated. Their expression was often triggered by chemical or environmental stimuli and coordinated with the development and morphogenesis of the producing organism. Sterigmatocystin (ST) was one of the ultimate precursors in the biosynthesis of the aflatoxins. The gene cluster responsible for the ST biosynthesis was identified in *A. nidulans* by Brown et al. (1996). A similar cluster of genes was found in *P. anserina* (Slot and Rokas, 2011). ST was detected in cultures of a freshly isolated *P. anserina* strain (Bills and Gloer, 2016). The ST biosynthetic gene cluster was regulated by the cluster-specific AflR transcription factor, which functioned downstream of glucose sensing (Fernandes et al., 1998). Overexpression of *PaAflR* led to a ST overproduction and a female sterility phenotype in *P. anserina* (Shen et al., 2019). Additionally, *LaeA* also regulated the ST biosynthetic gene cluster in an AflR-dependent manner. The  $\Delta$ *LaeA* mutation abolishes AflR expression and subsequently the production of ST and other SMs (Bok and Keller, 2004). Interestingly, Cre1, which regulated cellulase production, was also involved in the synthesis of SMs (Monroy et al., 2017). However, the importance of SNF1 and their functional connections in regulating SMs have been unknown.

Elucidating the physiological functions of *SNF1* contributed to understanding the mechanisms of filamentous fungi sense nutrition and cellular energetic status, which was paramount for the industrial production of cellulase. In this study, we identified a homolog of *SNF1* in the genome of *P. anserina*. With the use of a homologous recombination strategy, the disruption mutant of *P. anserina* *SNF1* (*PaSNF1*) was constructed, and the effects of *PaSNF1* in fungal development and lignocellulosic degradation were characterized.  $\Delta PaSNF1$  was characterized for defects in sexual reproduction (e.g., fruiting body formation), colony formation, ascospore germination, and stress responses. Our study provided the first genetic evidences that *SNF1* was involved in the ST biosynthesis. Enzymology and transcriptome analysis confirmed that *PaSNF1* played important roles in cellulose degradation.

## MATERIALS AND METHODS

### Strains and Culture Conditions

All strains of *Podospora anserina* applied in this study were derived from the “S” wild-type (WT) strain, which was sequenced for obtaining the genome of the *P. anserina* (Espagne et al., 2008; Grognet et al., 2014; Silar et al., 2019). The standard culture protocol of *P. anserina* could be found at <http://podospora.igmors.u-psud.fr/methods.php>. The  $\Delta mus51:Hygro$  mutant strain differed from the S WT reference strain by a single deletion of the *mus-51* gene, in which frequency of targeted gene replacement was increased (El-Khoury et al., 2008).

### Phylogenetic Analysis

The putative *SNF1* genes of *P. anserina* were identified by BLAST at the *P. anserina* website by retrieving various fungal *SNF1*<sup>1</sup>. In this study, the putative *SNF1* encoded by *Pa\_2\_770* was named as *PaSNF1*. The alignment was manually refined, and sites with ambiguous alignment were removed from the dataset. The phylogenetic tree was reconstructed using a neighbor-joining method, and an alignment was produced with the CLUSTALW algorithm in the MEGA5 software (Wang et al., 2014), in which the numbers at nodes indicated bootstrap values with 1,000 replications.

### Generation of Deletion Mutants and Complementation

A deletion cassette for the *SNF1* (*Pa\_2\_770*) gene was constructed with a geneticin resistance cassette as previously reported (Xie et al., 2014, 2015, 2018). The  $\Delta mus51:Hygro$  protoplasts were transformed by the PCR products with geneticin cassette. Transformants were screened on selective medium containing 100  $\mu\text{g/ml}$  of geneticin and 75  $\mu\text{g/ml}$  of hygromycin. Putative deleted mutants were firstly selected by PCR. The PCR amplified specific junctions to the replaced locus, with two primers that annealed at one end of the

selectable resistance gene and upstream of the proximal flank in the deletion cassette (**Supplementary Table S1**). Homologous recombination of the deletion cassette allowed amplification of a predictable fragment on each side of the selectable resistance gene. Three candidate transformants would be genetically purified by crossing them with WT. It aimed to eliminate the potential untransformed nuclei and then segregate out the  $\Delta mus-51$  mutation. Mat and mat + geneticin-R and hygromycin-S strains were identified from each progeny, and one transformant was subjected to Southern blot analysis for final validation (**Supplementary Figure S2**). Only purified transformants verified by Southern blot would be selected as stock deletion mutants for subsequent studies.

To ensure that the relevant *PaSNF1* gene was inactivated in the derived phenotypes, the complementation procedure was done by ectopic insertion of corresponding gene under the control of its native promoter. The WT with complete CDS and the 5' (500 bp) and 3' (200 bp) flanking regions were amplified by PCR using a high-fidelity polymerase and primers of *PaSNF1*-cF and *PaSNF1*-cR (**Supplementary Table S1**). The DNA fragment was cloned into the pBC-Nourseo (Lalucque et al., 2012) at the *NotI* and *BamHI* sites to yield pBC-Nours-*PaSNF1* plasmid. This plasmid was transformed into the protoplasts of the  $\Delta PaSNF1$  mutant strain. Transformants (*CPPaSNF1*) were screened on selective medium with 40  $\mu\text{g/ml}$  of nourseothricin (Xie et al., 2018). The presence of the WT allele was also verified by PCR.

### Growth and Development in Standard Conditions

To determine the roles of *PaSNF1* in fungal physiology, both the deleted mutant and WT were incubated separately on M<sub>2</sub> medium at 27°C. Colony morphology, pigmentation, perithecium formation, ascospore production, ascospore dispersal, and germination were observed during the vegetative growth and sexual cycle. Three plates were set for each treatment, and the experiment was repeated once.

### Stress Sensitivity Assays

In this study, mat + mating type strains were used unless specified. For evaluating the stress sensitivity, WT,  $\Delta PaSNF1$ , and *CPPaSNF1* were incubated separately on M<sub>2</sub> medium, supplemented with osmotic stress reagents (0.5 M of NaCl, 0.5 M of KCl, 0.5 M of sorbitol, and 0.75 M of glycerol), oxidative reagents (0.01% H<sub>2</sub>O<sub>2</sub> and 50  $\mu\text{M}$  of menadione), cell wall inhibitors [0.02% Congo red and 0.05% sodium dodecyl sulfate (SDS)], and cell membrane inhibitor (2.5  $\mu\text{g/ml}$  of fluconazole). The menadione was obtained from Macklin, and fluconazole was purchased from Aladdin. Fresh mycelium was incubated at 45°C in water bath for 2 h. Equal volume of mycelium was inoculated on M<sub>2</sub>. Equal volume of mycelium without heat shock served as control. All cultures were incubated at 27°C for 3 days, colony size was measured, three plates were set for each treatment, and the experiment was repeated once.

<sup>1</sup><http://podospora.i2bc.paris-saclay.fr/>



## Detection of Secondary Metabolites by High-Performance Liquid Chromatography

To analyze the SMs, both WT and  $\Delta PaSNF1$  (mat + mating type) strains were incubated separately in 100 ml of liquid medium (in 250-ml triangle bottle) at 27°C, shaking at 150 rpm for 7 days. Mycelium and the liquid phase were separated by centrifugation. The supernatant was extracted for three times with an equal volume of ethyl acetate. The organic phase was transferred for evaporation to yield a concentrated residue. The residue was re-suspended in 1 ml of methanol and then centrifuged at 12,000 rpm for 10 min. The obtained supernatant was filtered with 0.22- $\mu$ m Millipore filter and then analyzed with high-performance liquid chromatography (HPLC) (Waters e2695 separations Module) with 2998 PDA detector with ultimate XB-C18 column (4.6  $\times$  250 mm, Welch Materials, Inc.). The conditions for HPLC were as follows: flow rate was 1 ml/min, column temperature was 30°C, and the solvent gradients were solvent A (H<sub>2</sub>O) and solvent B (methanol). The sample was detected for 20 min using a linear gradient of 10–90% (0–20 min), 100% MeOH (20.01–30 min), and 10% MeOH (30.01–30 min). The wavelength of UV detector was set at 254 nm.

## Characterization of Sterigmatocystin Synthesis in $\Delta PaSNF1$ Mutant

For the purification of these compounds,  $\Delta PaSNF1$  mutant (mat + mating type) were cultured in 5 l of liquid medium at 27°C, shaken at 150 rpm for 7 days. Culture media were Solution 1 0.5% (v/v), Solution 2 0.5% (v/v), Solution 3 0.5% (v/v), Solution 4 0.5% (v/v), biotin 0.05% (v/v), thiamine 0.05% (v/v), microelement 0.1% (v/v), yeast extract 0.5% (m/v), and dextrin blonde 0.55% (m/v). The standard culture protocol of *P. anserina* could be found at <http://podospora.igmors.u-psud.fr/methods.php>. The culture was extracted with ethyl acetate for three times. The organic phase was evaporated to obtain the crude residue (1.3 g). The residue was separated on silica gel column with a stepped gradient elution of CH<sub>2</sub>Cl<sub>2</sub>–MeOH (100:0–0:100) to yield 6 subfractions (Fr. 1–Fr. 6). Fr. 1 (a total of 105.4 mg) was further purified by semi-preparative HPLC, and ST was gained (at 18.5 min). Nuclear magnetic resonance (NMR) spectra were performed on a Bruker Avance III 500 spectrometer (600 MHz). DMSO-*d*<sub>6</sub> was applied as the solvent for analyzing ST (Pachler et al., 1976; Oleinikova et al., 2012).

## Cellulose Degradation and Enzyme Assays

For evaluating the activity of cellulase, both WT and  $\Delta PaSNF1$  (mat + mating type) were cultured. The mycelium agar pieces (2  $\times$  2 mm) from actively growing WT and mutant strains were transferred to Petri dishes with cellophane placed on M2 medium, and then the mycelia were incubated at 27°C for 2 days (Xie et al., 2015). The harvested mycelium was smashed in 200  $\mu$ l of extraction buffer (sodium citrate buffer 50 mM, pH7.0) by FastPrep (4.0) for 20 s. All the samples were centrifuged at 10,000 rpm for 10 min to obtain the supernatants. The activity of FPA and EG were measured

by the 3,5-dinitrosalicylic acid (DNS) method with filter paper and carboxymethyl cellulose as substrates (Liao et al., 2018). The activity of BG and exo-1,4- $\beta$ -glucanase (CBH) was determined using *p*-nitrophenyl- $\beta$ -D-glucopyranoside (pNPG) and *p*-nitrophenol-D-cellobioside (pNPC) as the substrates, respectively (Li et al., 2016). Protein concentration was quantified with Bradford method (Bradford, 1976). All the determinations were performed in triplicate. To evaluate the cellulose degradation, the M2 standard minimal synthetic medium contains dextrin (0.5%) as carbon source. Dextrins were replaced with microcrystalline cellulose (MCC; 0.5%) from Sigma and 0.5 g/plate straw materials. Fragmented mycelia from mat + and mat- strains of WT or  $\Delta PaSNF1$  were mixed and then inoculated in the center of the plate under constant light illumination. Photographs were taken after 7 days of incubation.

## Transcriptome Analysis

The mycelia of WT and  $\Delta PaSNF1$  grown in cellulose (3 days) were harvested by filtration and immediately frozen in liquid nitrogen. The culture medium was a fungal liquid culture medium. An equivalent amount of carbon source dextrin was replaced with microcrystalline cellulose. The composition of the medium was as follows: Solution 1 0.5% (v/v), Solution 2 0.5% (v/v), Solution 3 0.5% (v/v), Solution 4 0.5% (v/v), biotin 0.05% (v/v), thiamine 0.05% (v/v), microelement 0.1% (v/v), yeast extract 0.5% (m/v), and Avicel (Sigma) 0.55% (m/v). Total RNA was extracted using TRIzol<sup>®</sup> RNA reagent (Invitrogen, Carlsbad, CA, United States) and further purified using DNase I (RNeasy Mini kit, Qiagen, Hilden, Germany). NanoDrop and agarose gel electrophoresis were used to check RNA integrity and concentration.

Qualified RNA with an OD<sub>260</sub>/OD<sub>280</sub> > 1.8 and RNA integrity number (RIN) > 7.0 was prepared according to Majorbio (Shanghai, China) standard protocols and sequenced on an Illumina HiSeq 2000/2500 platform (San Diego, CA, United States). All data in this study were generated by sequencing two independent duplicate samples. Total clean reads were mapped against predicted transcripts from the WT *P. anserina* strain genome<sup>2,3</sup> to assess sequence homology and functional annotation. Read mapping and counting using TopHat (version 2.1.1) and hisat2 (version 2.1.0) were performed. RSEM (version 1.3.1) software was used to analyze gene expression levels with the fragments per kilobase of exon per million mapped reads (FPKM) method. Differentially expressed genes (DEGs) were screened using the DESeq2 (version 1.24.0) with fold change of more than 1.5 and *p*-value  $\leq$  0.05 as thresholds. The dataset was also manually screened for the genes encoding carbohydrate active enzymes. Hierarchical clustering analysis was performed using the pheatmap package in R (version 3.6.1)<sup>2</sup>. RNA-Seq data were deposited in the National Center for Biotechnology Information (NCBI) Sequence Read Archive (SRA) under accession number PRJNA597840.

<sup>2</sup>[https://www.ncbi.nlm.nih.gov/genome/?term=txid5145\[orgn\]](https://www.ncbi.nlm.nih.gov/genome/?term=txid5145[orgn]).

<sup>3</sup><http://www.r-project.org>

## Quantitative RT-PCR

The mycelia of WT and  $\Delta PaSNF1$  grown in cellulose (3 days) were harvested by filtration and immediately frozen in liquid nitrogen. Total RNA was extracted using TRIzol<sup>®</sup> RNA reagent (Invitrogen, Carlsbad, CA, United States) for total RNA extraction. All total RNA samples were reversely transcribed into cDNAs and then assessed for the transcript levels of 20 genes via RT-qPCR with paired primers (**Supplementary Table S1**). All RT-qPCR experiments with three cDNA samples of each strain were performed under the action of SYBR<sup>®</sup> Premix Ex Taq<sup>™</sup> (TaKaRa, Dalian, China). Initially, three reference genes were used for normalization: *GPD* (glyceraldehyde 3-phosphate dehydrogenase, formally *Pa\_3\_5110*), *PDF2* (protein phosphatase PP2A regulatory subunit A, *Pa\_7\_6690*), and *UBC* (ubiquitin, *Pa\_4\_7790*). All three were stably expressed; comparatively speaking, *PDF2* has the best stability, and in RNA-Seq data, the difference between the FPKM of *PaPDF2* in WT and  $\Delta PaSNF1$  was not significant. Thus, only the *PaPDF2* gene was used as a reference gene to normalize gene expression results. The ratio of each gene transcript in  $\Delta PaSNF1$  over that in WT was converted to log<sub>2</sub> for comparison with the corresponding log<sub>2</sub> ratio from the RNA-Seq data.

## Microscopic Observations

The perithecia of mycelia grown on agar were observed and captured with a homemade microscope, combining a camera [monochromatic 1/3" complementary metal-oxide-semiconductor (CMOS) sensor with a resolution of 1,280 × 960 pixels] and a telecentric objective (4 × magnification and 65-mm focal length). Pictures of squashed perithecia and ascospore were captured with a Nikon eclipse Ni-V microscope and analyzed with ImageJ.

## RESULTS

### Identification of SNF1 Homolog in *Podospora anserina* and Phylogenetic Analysis

The genome of *Podospora anserina* has been sequenced<sup>4</sup>. SNF1 protein sequences of yeast and two filamentous fungi *Neurospora crassa* and *Hypocrea jecorina* were used as a query to identify the homolog in *P. anserina* genome. A homologous protein was found in *P. anserina*, presenting the highest identity with *N. crassa*, *H. jecorina*, and yeast, which was 75.64, 83.63, and 41%, respectively, and designated as SNF1 (Protein ID: CAP72646.1; *Pa\_2\_770*). The open reading frame (ORF) of SNF1 in *P. anserina* was predicted to be 2,127 bp in length, encoding a peptide of 708 amino acids with a predicted molecular weight of ~79.91 kDa (**Supplementary Figure S1A**). SMART analysis<sup>5</sup> of SNF1 suggested that this protein contained a serine/threonine (Ser/Thr) kinase catalytic domain (KD) (residues 67–318) and a two C-terminal domain (CTD) (residues 532–628 and residues

633–704). KD with the identity of 78.17% exhibited a high similarity to the SNF1 Ser/Thr catalytic domain in *Saccharomyces cerevisiae*. The degree of similarity was even lower at the CTD (25% identity), and only a few blocks showed identical residues (**Supplementary Figures S1,C**). Maximum likelihood method was applied to analyze the similarities among above 11 proteins, and a phylogenetic tree was constructed (**Figure 1**). The predicted amino acid sequence of *PaSNF1* shared an identity of 75.64% with NcSNF1 of *N. crassa* (CAD70761), 64.67% with HjsNF1 of *H. jecorina* (AF291845) (Cziferszky et al., 2003), 67.73% with FoSNF1 of *Fusarium oxysporum* (AAN32715) (Ospina-Giraldo et al., 2003), 66.06% with BbSNF1 of *Beauveria bassiana* (EJP66968) (Wang et al., 2014), 63.41% with PmSNF1 of *Pestalotiopsis microspora* (AUW40141) (Wang et al., 2018), 57.53% with MgSNF1 of *Magnaporthe grisea* (ABF48563) (Yi et al., 2008), 57.94% with SsSNF1 of *Sclerotinia sclerotiorum* (CAB40826) (Vacher et al., 2003), 44.35% with PdSNF1 of *Penicillium digitatum* (AFS18464) (Zhang et al., 2013), and 43.43% with CcSNF1 of *Cochliobolus carbonum* (AAD43341) (Tonukari et al., 2000). *PaSNF1* protein showed lower homology with SNF1 protein from *S. cerevisiae*, which was 42%. SNF1 orthologs showed that *PaSNF1* from different fungi clustered together, whereas yeast homologs formed a separate cluster (**Figure 1**).

### Creation of *PaSNF1* Knockout and Complementation Mutants

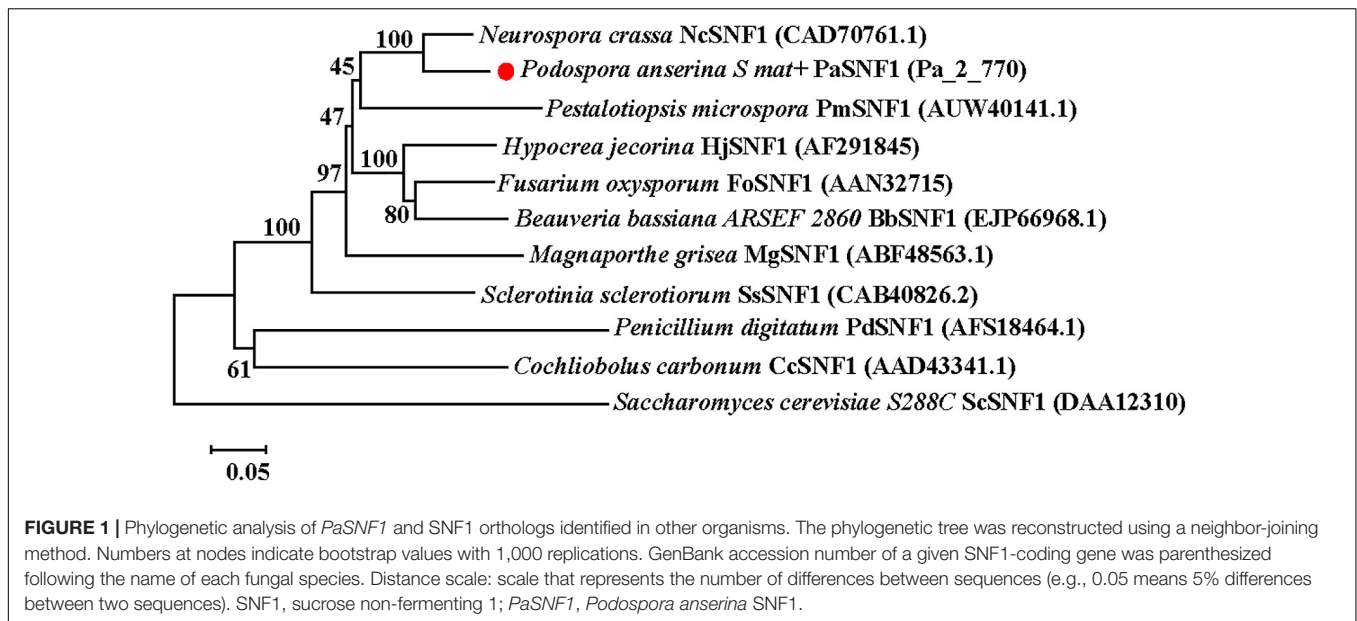
*PaSNF1* disruption mutant was generated by replacing a coding sequence of *PaSNF1* with the genetic resistance gene. The *PaSNF1* disruption mutant without additional ectopic integrations of the replacement cassette sequence mutants was confirmed by PCR and Southern blot (**Supplementary Figure S2**). For the complementation CPP*PaSNF1*, a functional *PaSNF1* ORF was introduced into the  $\Delta PaSNF1$  mutant, and the obtained complementation mutants were screened on a selective medium containing nourseothricin and geneticin and then confirmed by PCR.

### Effects of *PaSNF1* on Growth and Development of *Podospora anserina* in Standard Conditions

To investigate the effects of SNF1 in the development of *P. anserina*, the *PaSNF1* mutant ( $\Delta PaSNF1$ ), complementation mutants (CPP*PaSNF1*), and the WT strains were cultured under the optimal conditions for growth and sexual reproduction (on M2 minimal medium at 27°C, in the presence of light). Then the detailed phenotypic analysis was performed. The knockout of *PaSNF1* gene led to the growth and developmental defects of *P. anserina*. Compared with that of WT, the growth of the mutant  $\Delta PaSNF1$  was significantly decreased. Colony size of  $\Delta PaSNF1$  was 77% of WT after 3 days of incubation (**Figures 2A,F**). The fruiting bodies of WT strain began to develop after 5 days. There were numerous viable ascospores expelled after 2 days (**Figure 2B**).  $\Delta PaSNF1$  mat + x  $\Delta PaSNF1$  mat- led to a defect in perithecia production and ascospore formation. Compared with WT, there was a 62% reduction

<sup>4</sup><http://podospora.i2bc.paris-saclay.fr/index.php>

<sup>5</sup><http://smart.embl-heidelberg.de/>



in the production of perithecia (**Figure 2G**). Surprisingly, no ascospore was expelled from perithecia in  $\Delta PaSNF1$  mutant (**Figures 2B,E**). Microscopic observation of perithecia showed that the ascus shells produced by WT and mutants were similar, without significant difference in diameter. The ascus shell of the mutant also differentiated into a normal neck (**Figure 2C**). Microscopic observations of squashed perithecia were made in order to observe produced ascospores and asci. Typical rosettes of asci with four ascospores were observed in WT strain crosses. Usual rosettes were composed of mature ascospores, which were dark green owing to accumulation of melanin, and not fully ripened ascospores, which were light green. However, transparent asci were observed and failed to form intact ascospores in the  $\Delta PaSNF1$  (**Figure 2D**). These observations indicate that the lack of ascospore release in the  $\Delta PaSNF1$  was due to a defect in ascospore formation rather than a defect in the mechanism of forcible ascospore discharge.

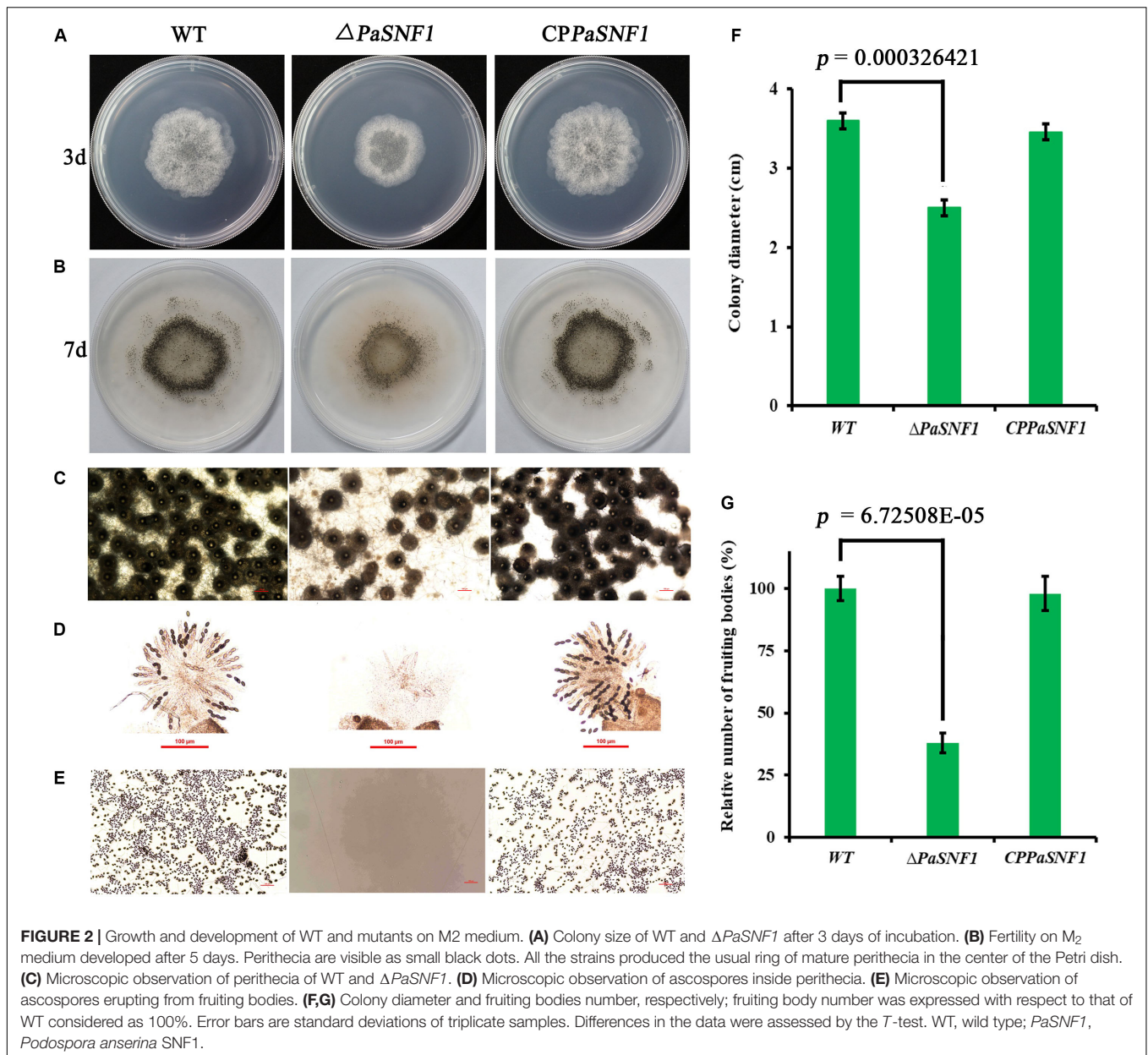
To further analyze the role of the *PaSNF1* gene in sexual development, we investigated the behavior of  $\Delta PaSNF1$  strain as male and female partners in crosses with a WT strain. Plates with  $\Delta PaSNF1$  mat+ and WT mat- mycelia were covered with 1.5 ml of sterile water, which spread male gametes from one mycelium on the other and allowed these spermatia to fertilize female organs (**Figure 3**). WT mat- female organs fertilized by  $\Delta PaSNF1$  mat+ spermatia produced ascospores, indicating that the deletion of *PaSNF1* is not dominant and can be complemented by the functional *PaNSF1* gene present in the WT female strain. In contrast,  $\Delta PaSNF1$  mat+ female organs fertilized by WT mat-spermatia did not produce ascospores, indicating that  $\Delta PaSNF1$  has a maternal effect; that is, the presence of a functional *PaSNF1* gene in the male nuclei cannot complement the absence of this gene in the female organ. Crosses on plates with  $\Delta PaSNF1$  mat- and WT mat+ indicated that the maternal effect of  $\Delta PaSNF1$  is not mating-type dependent. In addition, *SNF1* knockout resulted in a red-orange pigment deposition of the mutant  $\Delta PaSNF1$ ,

compared with WT on solid M2 plates (**Figure 2B**). To further confirm that the phenotypic changes observed in the mutant resulted from the deletion of *PaSNF1* instead of other unknown genetic mutations, we conducted complementation analyses of  $\Delta PaSNF1$ . The defects of  $\Delta PaSNF1$  in mycelial growth, sexual development, and pigmentation were complemented by genetic complementation. Our results indicated that *PaSNF1* not only affected mycelial growth but also regulated fruit body formation and developmental maturation.

## The Roles of *SNF1* in the Environmental Stress Tolerance

To determine the roles of *PaSNF1* in response to stress conditions, the growth of the strains under different stress conditions was analyzed (**Figure 4**). The growth of the  $\Delta PaSNF1$  mutant was significantly inhibited by 0.5 M of NaCl, 0.5 M of KCl, and 0.75 M of glycerol, compared with that of WT and *CPPaSNF1*, whereas the result was different for sorbitol. This result suggested that *PaSNF1* may be necessary for the cellular responses of *P. anserina* to osmotic pressure. In contrast, the  $\Delta PaSNF1$  mutant was insensitive to 0.01% H<sub>2</sub>O<sub>2</sub>. However, on plates supplemented with 50  $\mu$ M of oxidant menadione, the growth rate of  $\Delta PaSNF1$  mutant was obviously slower, implying the roles of *SNF1* in its tolerance to this stress. The  $\Delta PaSNF1$  mutant showed similar sensitivity to heat shock, presented with slower growth, and significantly increased inhibition rate. Particularly interestingly, the resistance of the  $\Delta PaSNF1$  mutant to the fungicide fluconazole was significantly increased after knocking out of the *SNF1* gene; compared with WT and *CPPaSNF1* strains, the growth of  $\Delta PaSNF1$  mutant was significantly increased while the inhibition rate was reduced. These results indicated that the *PaSNF1* gene in *P. anserina* played an important role in its response to osmotic stress, oxidative stress, and heat shock.





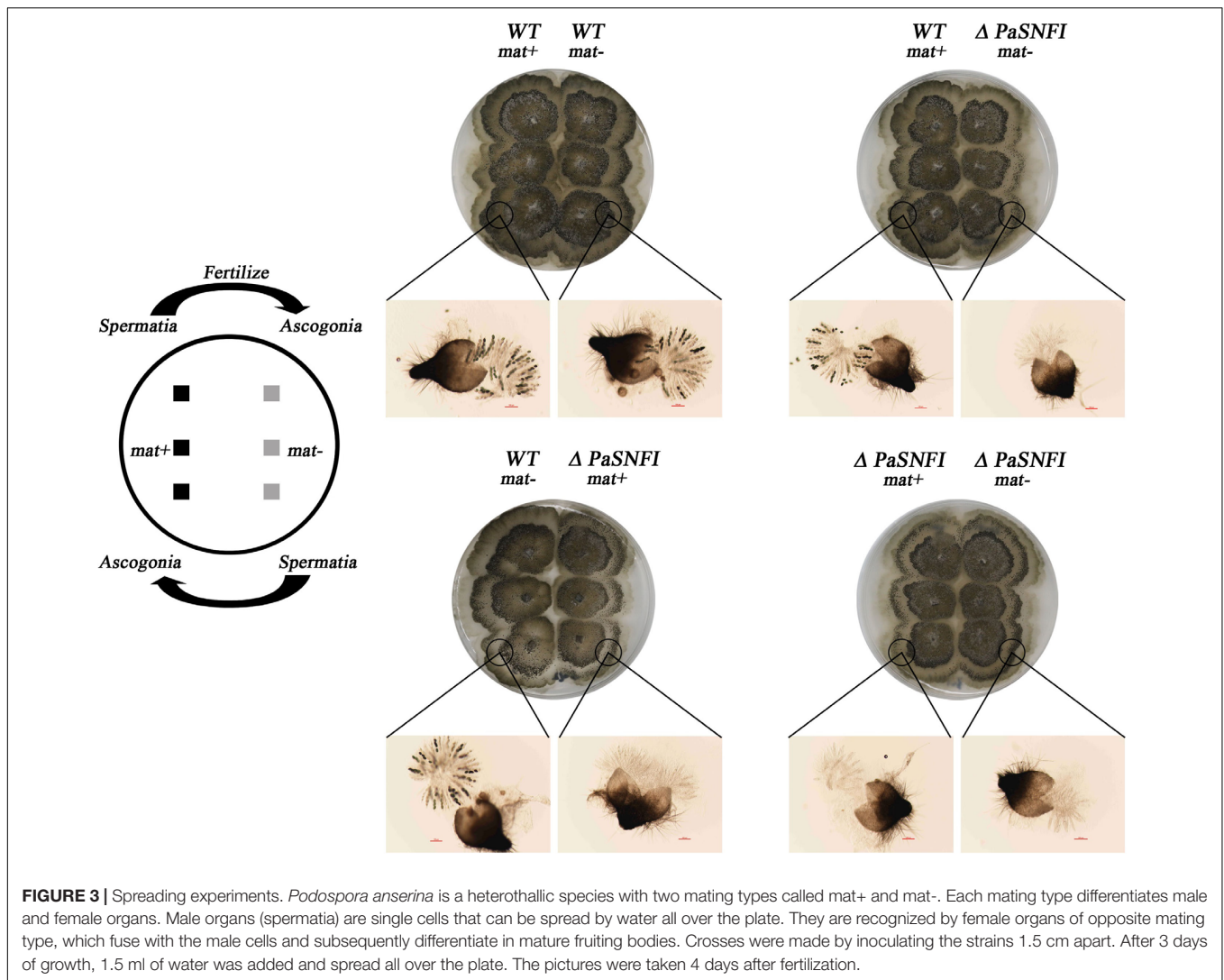
## The Regulation of *SNF1* for Sterigmatocystin Biosynthesis

In fungi, SMs were generally associated with the developmental processes in response to various abiotic or biotic external stimuli (Yin et al., 2012). To examine the regulation effects of *SNF1* in biosynthesis of SMs in *P. anserina*, the profile of secondary compounds in  $\Delta PaSNF1$  cultures was analyzed by HPLC. We found that the profile of SMs was significantly altered after the deletion of *PaSNF1* (Figure 5A). Based on HPLC profiling, peak of SM 1 (at 18.5 min) in  $\Delta PaSNF1$  was 50% higher than that of WT (Figures 5A,C). To further identify the compound at 18.5 min, large-scale fermentation was performed; the metabolites were further isolated and purified. The compound was identified as ST by NMR (Figure 5B and

Supplementary Figures S3, S4). The result suggested that the biosynthesis of ST was negatively regulated by *PaSNF1*. The above results demonstrated that *PaSNF1* was a regulator of SMs and may be involved in either activation or silencing of certain gene clusters in *P. anserina*.

## Knockout of *SNF1* Led to Impaired Cellulose-Utilizing Ability

To investigate whether the *PaSNF1* kinase participated in the production of cellulase, the cellulase activity and cellulose-utilizing ability of WT and  $\Delta PaSNF1$  were detected. The cellulase activity of WT and  $\Delta PaSNF1$  was further compared, including FPA, EG, CBH, and BG (Figure 6A). After 3 days of culture on M2 medium, the activities of FPA, EG, and BG were significantly



**FIGURE 3 |** Spreading experiments. *Podospora anserina* is a heterothallic species with two mating types called *mat+* and *mat-*. Each mating type differentiates male and female organs. Male organs (spermatia) are single cells that can be spread by water all over the plate. They are recognized by female organs of opposite mating type, which fuse with the male cells and subsequently differentiate in mature fruiting bodies. Crosses were made by inoculating the strains 1.5 cm apart. After 3 days of growth, 1.5 ml of water was added and spread all over the plate. The pictures were taken 4 days after fertilization.

lower than those of WT, which were reduced to 17.2, 27.4, and 50.3%, respectively, of WT (**Figure 6A**). After 7 days of culture on MCC agar medium (with microcrystalline cellulose as carbon source instead of dextrin), the fruit body formation of  $\Delta PaSNF1$  mutant was significantly reduced, and similar phenotypes were observed on straw medium (**Figure 6B**). Therefore, *PaSNF1* was considered as critical for the cellulose-utilizing ability of *P. anserina*.

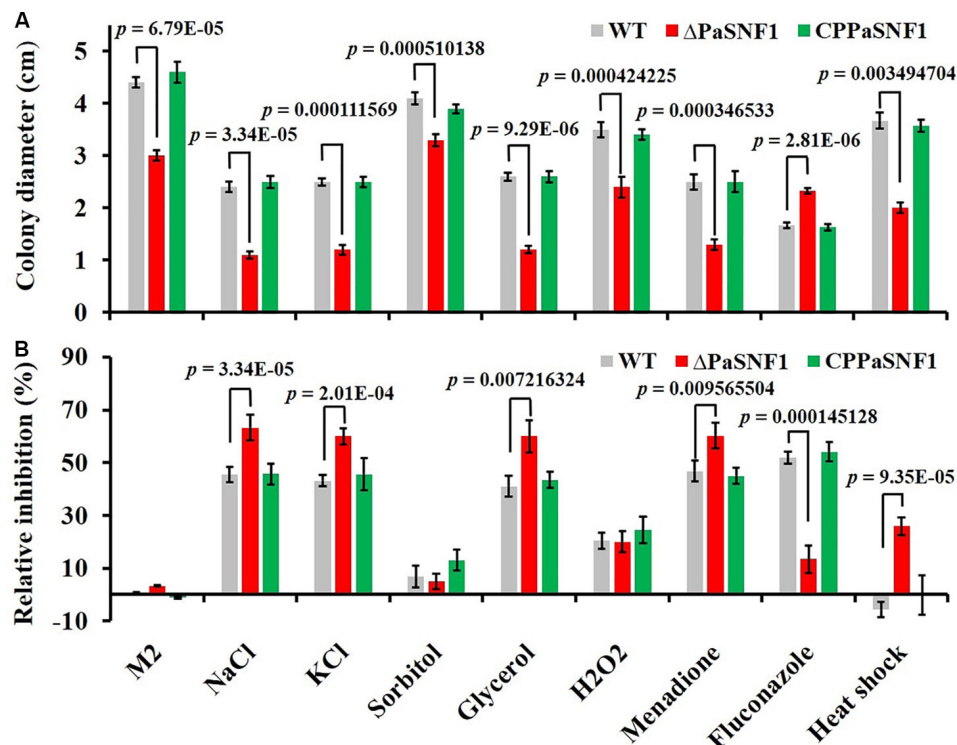
### ***SNF1* Regulated the Expression of the Carbohydrate-Active Enzymes Genes and Transporters in *Podospora anserina***

The results described above confirmed that *SNF1* made effects on cellulase and hemicellulase expression of *P. anserina*; however, these effects could not be validated solely from growth data. To determine whether the defect in cellulase secretion and activity in the  $\Delta PaSNF1$  mutant was due to the failure to induce cellulase gene expression versus a defect in cellulase secretion, we assessed genome-wide expression differences via

RNA-Seq between the WT and  $\Delta PaSNF1$  strains in medium containing Avicel. Transcriptome results showed that significant expression differences in 468 genes were observed in  $\Delta PaSNF1$  compared with WT; DEGs accounted for 4.3% of all genetic data, among which 129 genes were up-regulated and 339 genes were down-regulated (**Figure 7A** and **Supplementary Table S2**). Among these genes, 41 of 471 CAZyme encoding genes were detected (Carbohydrate Active Enzymes database<sup>6</sup>), 24 genes were significantly down-regulated, 17 genes were significantly up-regulated (**Figure 7B** and **Supplementary Table S3**), and the DEGs accounted for 8.7% of all CAZyme-encoding genes. To verify whether the CAZyme-encoding genes were enriched and overexpressed, we used  $\text{Log}_2\text{FC}(\Delta PaSNF1/\text{WT})$  to perform statistical analysis (*T*-test) on up-regulated and down-regulated genes between CAZyme-encoding genes and non-CAZyme-encoding genes in DEGs. The results indicate that the differences of up-regulated (*p* value = 0.219811) and down-regulated genes (*p*-value = 0.740564) between CAZyme-encoding genes and

<sup>6</sup><http://www.cazy.org/>

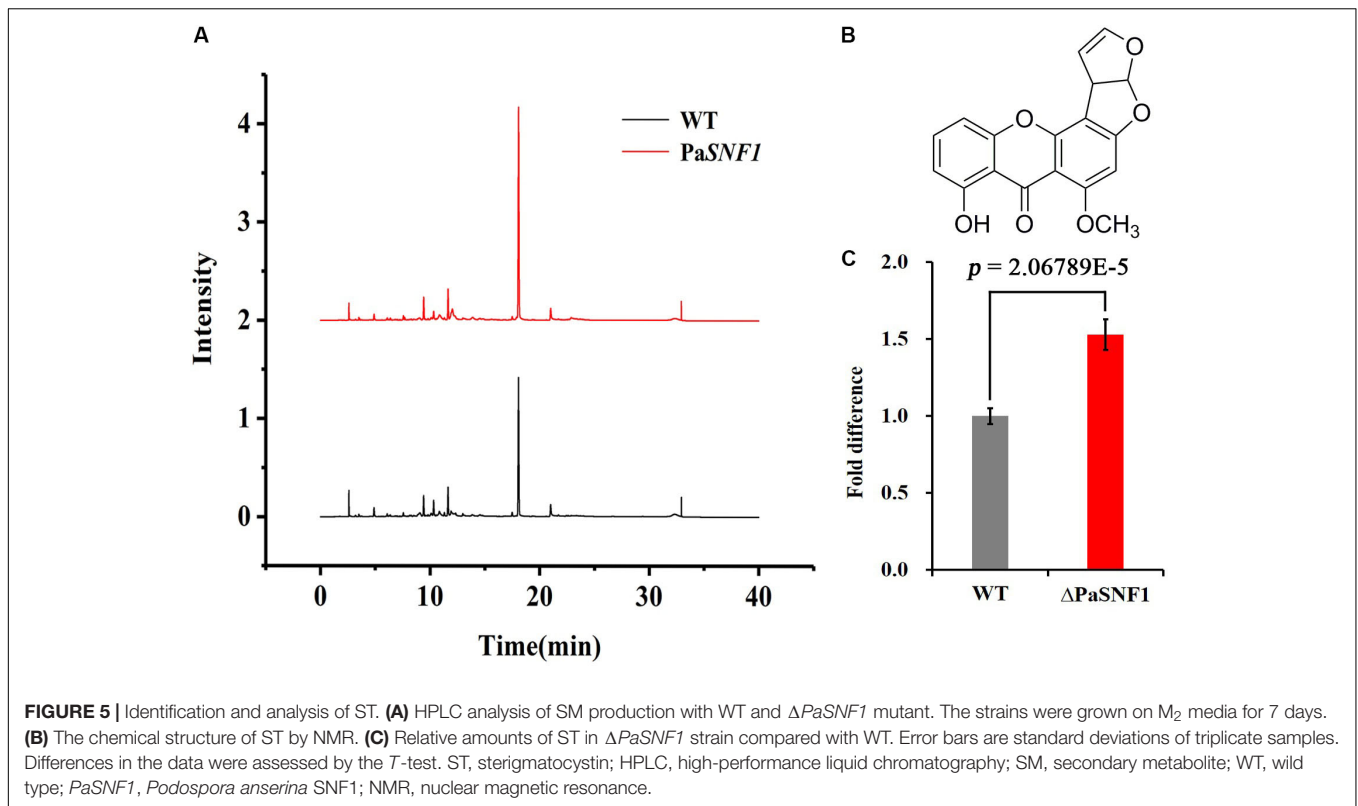




**FIGURE 4 |** Tolerance analysis to environmental stresses. **(A)** Colony sizes of WT,  $\Delta PaSNF1$ , and CPPaSNF1 were incubated separately on M2 medium, supplemented with one of the osmotic stress reagents (0.5 M of NaCl, 0.5 M of KCl, 0.5 M of sorbitol, and 0.75 M of glycerol), oxidative reagents (0.01% H<sub>2</sub>O<sub>2</sub> and 50  $\mu$ M of menadione), and 2.5  $\mu$ g/ml of fluconazole; and fresh mycelium was incubated at 45°C in water bath for 2 h. M2 medium without the supplements was served as the control. **(B)** Relative inhibition rate. All cultures were incubated at 27°C for 3 days, and colony size was measured. Three plates were set for each treatment, and the experiment was repeated once. Error bars are standard deviations of triplicate samples. Differences in the data were assessed by the *T*-test. WT, wild type; *PaSNF1*, *Podospora anserina* SNF1.

non-CAZyme-encoding genes were not significant. However, the proportion ( $41/468 \times 100\% = 8.76\%$ ) of CAZyme-encoding genes in DEGs was doubled as compared with the proportion ( $471/10,888 \times 100\% = 4.33\%$ ) of all CAZyme-encoding genes in the genome, and these results suggest to some extent that more CAZyme-encoding genes were induced to be activated, although CAZyme-encoding genes are not overrepresented in the DEGs in  $\Delta PaSNF1$ . These down-regulated genes encoded CAZymes in the glycoside hydrolase family (GH2, GH3, GH5, GH13, GH17, GH37, GH55, GH76, GH81, and GH94), laccase (AA1 and Lac), cellobiose dehydrogenases (AA3 and CDH), and lytic polysaccharide monoxygenases (LPMO, AA9, and AA11); however, in the  $\Delta PaSNF1$  mutant, FPKM of LPMOs was very small, and the FPKM of AA9 and AA11 is 0.665 and 3.83, respectively (Figure 7C and Supplementary Table S3). The majority of which comprised glycosyl hydrolases (GHs) participated in cellulose and hemicellulose degradation. These findings implied that expression of most of the cellulolytic and hemicellulolytic genes was affected by the deletion of *PaSNF1*. Down-regulated genes also contained some glycosidase activity against various side chains in hemicellulose, such as endo-1,6- $\alpha$ -mannosidase (PODANS\_1\_19460),  $\beta$ -galactosidase (PODANS\_1\_18330), chitin deacetylase (PODANS\_1\_4780), and  $\alpha,\alpha$ -trehalase (PODANS\_1\_2050).

The reduced expression of various glycosidase genes was also reflected in the decreased ability to grow on their oligosaccharide substrates (Supplementary Figure S5). The majority of up-regulated genes encoded CAZymes are the glycoside hydrolase family (GH6, GH7, GH11, GH18, and GH53) and LPMOs (AA9: PODANS\_1\_21900, PODANS\_2\_4860, PODANS\_3\_2580, PODANS\_5\_10760, PODANS\_6\_11370, and PODANS\_6\_11470). FPKM of LPMOs was significantly increased, which reached 69% in up-regulated genes encoded CAZymes in  $\Delta PaSNF1$ , 2.5 times that of WT (Figure 7D), which may be related to the increase of H<sub>2</sub>O<sub>2</sub> in the mutant. In addition, 23 transporters were found to be down-regulated in the  $\Delta PaSNF1$  strain compared with WT, and nine of these genes encoded proteins that belong to the major facilitator superfamily (MFS) permeases (Figure 7E and Supplementary Table S4). Four sugar transporters were included: *PODANS\_5\_4520* (*SPT1*) encoded sugar and polyol transporter 1 (*SPT1*) (Schilling and Oesterhelt, 2007), *PODANS\_4\_9820* (*Hgt-1*) was identified as a high-affinity glucose transporter (Baruffini et al., 2006), and *PODANS\_5\_480* and *PODANS\_1\_22840* (*MstA*) showed the capability of transporting monosaccharides including xylose (Jorgensen et al., 2007). However, none of the transcription factors known to directly regulate cellulase gene expression exhibited altered expression. Interestingly, two



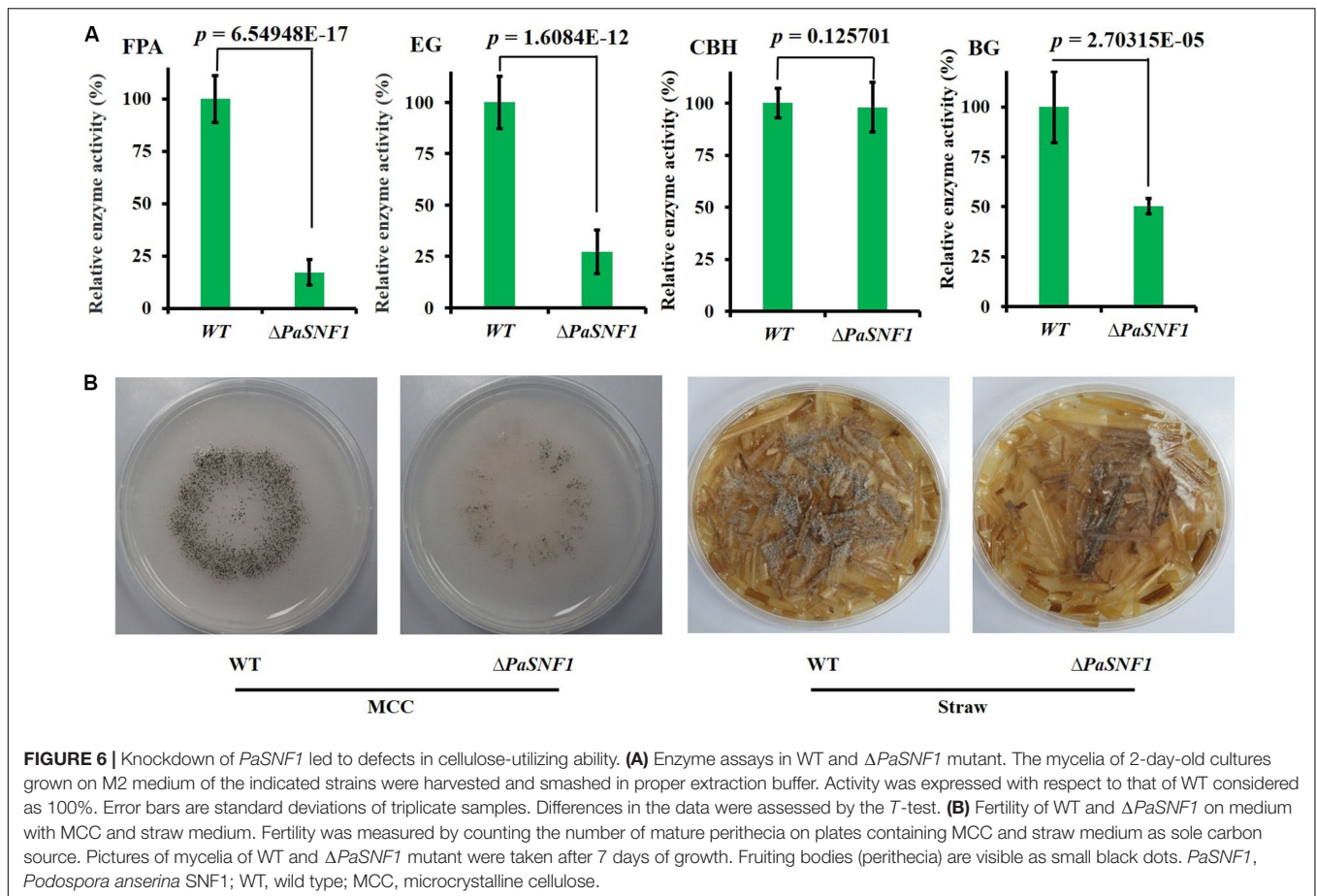
genes (*PODANS\_3\_3440* and *PODANS\_5\_12360*) encoding secondary metabolic regulators LAE1 were significantly down-regulated (**Supplementary Table S2**), which was a homolog of methyltransferase LAE1 of *Trichoderma reesei*. It was involved in cellulase gene expression regulations (Seiboth et al., 2012), suggesting an indirect relationship between SNF1 and cellulase expression. To validate the DEGs identified from RNA-Seq data, transcript levels of 10 up-regulated (*PODANS\_1\_9380*, *PODANS\_1\_5230*, *PODANS\_1\_12700*, *PODANS\_4\_5380*, *PODANS\_5\_9670*, *PODANS\_6\_2530*, *PODANS\_7\_8775*, *PODANS\_4\_5370*, *PODANS\_2\_7185*, and *PODANS\_1\_990*) and 10 down-regulated genes (*PODANS\_3\_1840*, *PODANS\_6\_9965*, *PODANS\_7\_150*, *PODANS\_5\_3595*, *PODANS\_3\_2688*, *PODANS\_3\_780*, *PODANS\_6\_10085*, *PODANS\_5\_11880*, *PODANS\_1\_19460*, and *PODANS\_7\_8100*) in the mycelium cells of  $\Delta PaSNF1$  and WT were assessed via RT-qPCR with paired primers (**Supplementary Table S1**) and compared with those in the RNA-Seq data. As a result, all the gene transcripts assessed in RT-qPCR showed the same up-regulated or down-regulated trends as determined by the RNA-Seq analysis for DEGs identification (**Figure 7F**).

## DISCUSSION

Organisms would suffer a variety of nutritional conditions during their life cycle. Complex signaling networks have been evolved in microbes to identify and prioritize the utilization of available energy sources, such as the CCR system. The CCR

system would prevent the utilization of difficultly metabolizable carbon sources for ensuring the preferential utilization of easily metabolizable carbon sources such as D-glucose. For many fungi, several genes involved in the carbon catabolism were regulated by CCR, including the genes encoding carbohydrate-degrading enzymes such as cellulase, amylase, and xylanase. The SNF1/AMPK was highly conserved among eukaryotic organisms, which was a key regulator in both carbon metabolism and energy homeostasis. The regulation of SNF1 activity played a central role in the alleviation of CCR (Brown et al., 2013). During the absence of glucose, *SNF1* regulated the expression of metabolic genes by controlling transcriptional activators and repressors (Carlson, 1999). In *Saccharomyces cerevisiae*, *SNF1* acted as an activator for more than 400 glucose-repressing genes, some of which were involved in alternative carbon source utilization pathways (Young et al., 2003). In this study, the function of *PaSNF1* was explored. Our results demonstrated that *PaSNF1* played important roles in regulating vegetative growth, sexual development, stress responses, and biosynthesis of SMs in *Podospira anserina* and then confirmed that it was a major actor of lignocellulose degradation in *P. anserina*.

The *PaSNF1* protein consisted of a serine/threonine (Ser/Thr) kinase catalytic domain (KD) (residues 67–318) and a two CTD (residues 532–628 and 633–704), showing the same structure with the SNF1s identified in many other organisms (Zhang et al., 2013; Islam et al., 2017). In addition, the *PaSNF1* protein generally shared a high sequence identity with the SNF1s of other organisms, especially the catalytic domain (Cziferszky et al., 2003; Ospina-Giraldo et al., 2003; Wang et al., 2014, 2018).



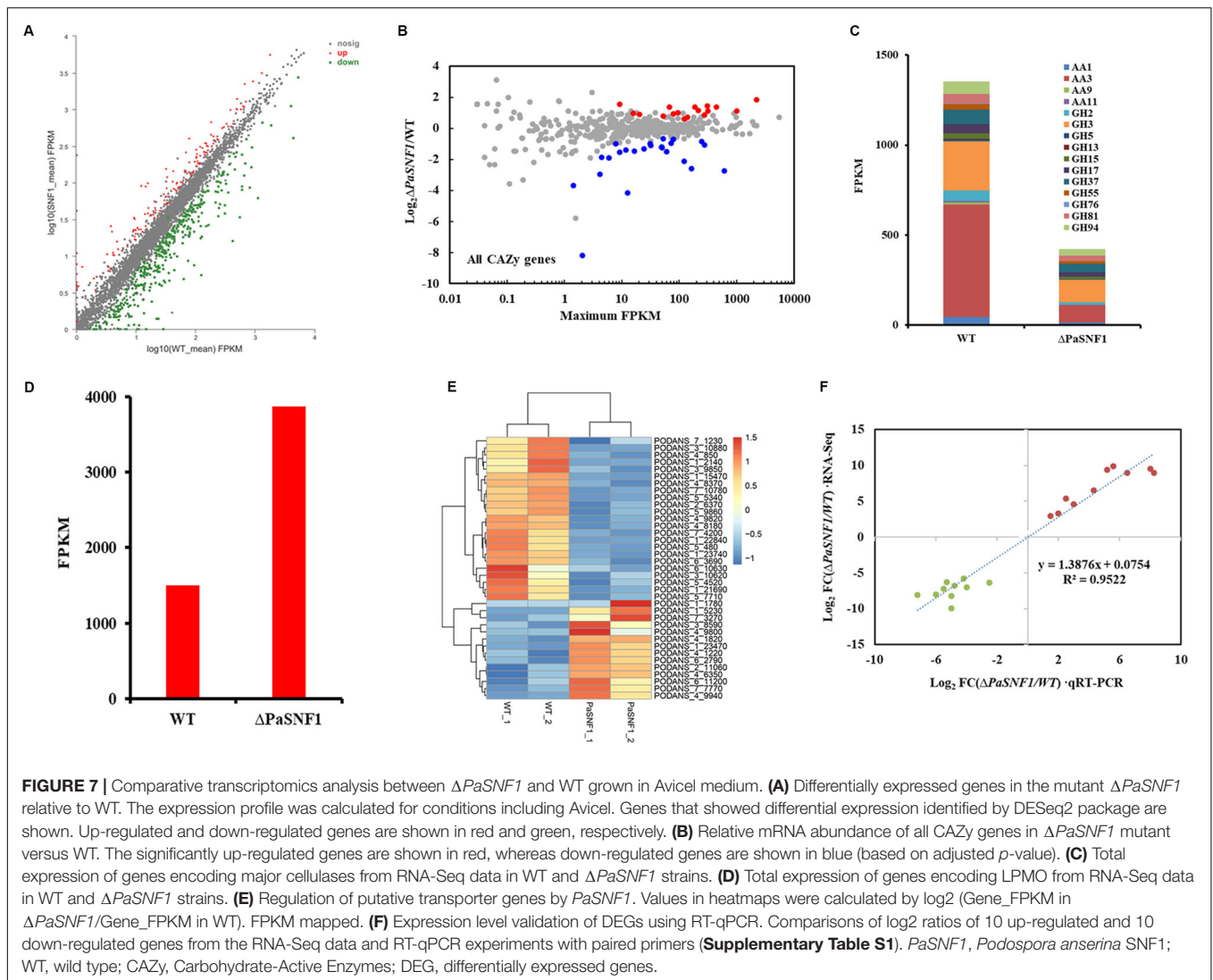
Phylogenetic analysis of SNF1 homologous proteins from filamentous fungi and yeasts formed a separate cluster. Results of phylogenetic analysis indicated that *PaSNF1* was much more closely related to the SNF1 orthologs from the filamentous ascomycetous fungi than those from ascomycetous yeasts, plants, or mammals (Figure 1). Among the SNF1s in the filamentous fungi, the *PaSNF1* was closest to the SNF1 ortholog identified in *Neurospora crassa*, *Hypocrea jecorina*, *Fusarium oxysporum*, and *Beauveria bassiana* (Figure 1).

The essential role of *SNF1* in filamentous fungi was the regulation of vegetative growth and sexual development. The ability to form the perithecia and ascospores was affected in *GzSNF1* deletion mutants (Lee et al., 2009), conidiation was also affected by the loss of *PdSNF* (Zhang et al., 2013), and the ablation of *LmSNF1* would result in impaired sporulation and spore germination (Feng et al., 2014). In  $\Delta MoSNF1$  mutant, the sporulation ability was abolished (Yi et al., 2008), and the *PmSNF1* also played a critical role in conidiation and vegetative growth in *Pestalotiopsis microspora* NK17 (Wang et al., 2018). Deletion of *SNF1* in *Fusarium graminearum* led to defects in vegetative growth and sexual reproduction (Yu et al., 2014). Our observations were consistent with the above results; the knockout of *PaSNF1* gene led to the growth and developmental defects of *P. anserina*. The *PaSNF1* did not only affect mycelial growth but also regulate fruit body formation and developmental

maturation (Figure 2). This finding suggested that *PaSNF1* could trigger the expression of genes required for the formation of fruit body and ascospores. Mechanisms underlying these functions may be associated with the inadequate or unbalanced nutrients (Lee et al., 2009).

In yeast, the SNF1 protein kinase has been necessary for its response to various environmental stresses such as sodium and lithium salts, alkaline pH, heat shock, and hyperosmolarity (Hong and Carlson, 2007). Treatment with high concentrations of salts (0.8 M of KCl and 1 M of NaCl), 1 M of sorbitol, and 2 mM of oxidant  $H_2O_2$  could dramatically inhibit vegetative growth of the  $\Delta PmsNF1$  mutant strain (Wang et al., 2018). However, the response of the *SNF1* mutant of *Cryptococcus neoformans* to osmotic, salt, and oxidative stresses was not significantly different from that of the WT (Hu et al., 2008). Our results showed that the growth of the  $\Delta PaSNF1$  mutant would be significantly inhibited by 0.5 M of NaCl, 0.5 M of KCl, and 0.75 M of glycerol; however,  $\Delta PaSNF1$  mutant was not sensitive to 0.5 M of sorbitol. A comparable function for *SNF1* in the *C. neoformans* JEC21 has been reported (Yang et al., 2010). Our data clearly demonstrated the crucial roles of *PaSNF1* in the tolerance of fungus to heat shock; the mycelium of the  $\Delta PaSNF1$  mutant was sensitive to heat shock of 45°C. This function of SNF1 has been previously reported in other fungi, such as *C. neoformans* and *Pestalotiopsis microspora* (Yang et al., 2010; Wang et al., 2018).





Moreover, after the knockout of *SNF1* gene, the resistance of the  $\Delta PaSNF1$  mutant to the fungicide fluconazole would be significantly increased, whereas the sensitivity to fluconazole was not varied in  $\Delta CnSNF1$  mutant (Hu et al., 2008). It indicated the remarkable functional deviation between *PaSNF1* and *CnSNF1*, although the underlying mechanism remained to be identified.

Ascomycete genomes code for on average 40 biosynthetic gene clusters with crucial importance in SM synthesis (Pusztahelyi et al., 2015). Genome analyses in aspergilli suggest between 39 and 80 biosynthetic gene clusters per species (Inglis et al., 2013). Sequence analysis of the *P. anserina* genome revealed its ability to produce 40 putative SMs including 18 polyketide synthases (PKSs) (Espagne et al., 2008). However, until now, only limited chemical investigations have been conducted, and plenty of SMs were yet to be discovered. Recent studies have shown that ABR1 was involved in biosynthesis of DHN melanin, which colored ascospores; and knockout of ABR1 led to decreased ascospore pigmentation accompanied by lowered ascospore germination rate (Xie et al., 2018). Shen et al. (2019)

reported that *PaStcA* and *PaAflR* were key genes necessary for the biosynthesis of ST in *P. anserina*, deletion of *PaStcA* that blocked the ST pathway, and overexpression of *PaAflR* that resulted in the excessive accumulation of ST, thus leading to a female sterility phenotype. In this study, to identify the metabolites regulated by *PaSNF1*, the large-scale fermentation of the  $\Delta PaSNF1$  mutant was performed, and the structures of metabolites with unique peaks were characterized. This result suggested that *PaSNF1* may have negative effects on the biosynthesis of ST. The general pattern of the peaks for ST was significantly increased in the HPLC profile of  $\Delta PaSNF1$  mutant compared with WT (**Figure 5**). Correspondingly, the deletion of *PaSNF1* led to a defect in perithecium production and ascospore formation. Moreover, *OE-PaAflR* displayed overproduction of ST, and overexpression of *PaAflR* also led to sterility (Shen et al., 2019). These results indicated that ST was closely related to the development of fungi and spore formation. To our knowledge, this has been the first report of SNF's regulation effects on ST biosynthesis.

In addition to regulating ST synthesis, SNF1 also played a critical role in regulating cellulose degradation. We showed that a  $\Delta PaSNF1$  mutant displayed severe growth defects on cellulose, and similar phenotypes were observed on straw medium (Figure 6B), which was correlated with a lack of cellulolytic enzyme activity. Indeed, the enzyme activities of FPA, EG, and BG in  $\Delta PaSNF1$  mutant were significantly reduced (Figure 6A). The defects in *PaSNF1* would lead to the reduced (or impaired) production of such enzymes, thus inhibiting the degradation of lignocellulose and utilization of carbon sources. Consistent with this phenotype, the expression of the many CAZymes genes of *P. anserina* was significantly decreased in the  $\Delta PaSNF1$  mutant compared with WT (Figure 7). Following the extracellular degradation of the lignocellulose, the uptake of the soluble breakdown products has been a key process to regulate the transcription of cellulases and related genes. The transporters played an important role, some of which exhibited the ability to sense the breakdown products during their passage through the cell membrane (Novy et al., 2019). Transcriptome analysis showed that the genes coding for MFS permeases were also highly repressed in the  $\Delta PaSNF1$  mutant, including four putative sugar transporters. These findings suggested that *PaSNF1* played an important role in positively regulating the expression of genes encoding cellulolytic enzymes. Interestingly, our data revealed that the main transcription factors that regulated the expression of cellulases in *P. anserina* showed no change of expression in the mutant strain relative to WT strain. For example, the expression of XYR1, CLR1, and CLR2 was not significantly varied in mutant strains, especially CRE1, which was the key protein of CCR and the direct target protein of SNF1. The expression of cellulose biomass degrading enzyme genes was regulated by various global regulators. The protein methyltransferase LAE1 was one global regulator of SM gene clusters such as ST formation, which regulated sexual and asexual developmental processes in Ascomycota (Tani et al., 2014). LAE1 also played an important role in regulating the expression of cellulase, polysaccharide hydrolases, and *xyl1* in *Trichoderma reesei* (Seiboth et al., 2012). Our results showed that two putative LAE1 (*PODANS\_3\_3440*; *PODANS\_5\_12360*) expressions were significantly down-regulated in the  $\Delta PaSNF1$ . This result suggested a refined dual mechanism that controlled the expression of cellulase genes through the modulation of transcription factors.

SNF1 promoted feeding on lignocellulose and reduced the synthesis of ST. There may be a balance between feeding and fighting competitors on the basis of anticorrelated effects on each pathway. In our study, negative correlation was observed based on the data of enzyme activity and metabolite map. In a previous study, analysis of the genome revealed that CAZymes of *T. reesei* were often observed in clusters along with genes involved in SM (Martinez et al., 2008). It was considered as a means to fend off competitors for nutrients. Fungi constantly faced the challenge to outcompete other organisms in complex ecosystems. Therefore, they developed powerful enzyme systems for

degradation of substrates, which provided for fast growth and efficient colonization of their environment (van den Brink and de Vries, 2011). However, fungi also evolved the ability to kill, or at least inhibit the growth of their competitors, by producing a versatile array of SMs (Demain and Fang, 2000). The application of these different survival utilities should be tightly controlled in order to balance the assignment of resources for feeding to succeed by superior growth or fighting to decrease the chances of survival for competitors. This study supported this hypothesis of coordination of substrate degradation and competition. This may be a mechanism via which fungi evolved to balance the operation of primary and secondary metabolism during its life cycle. Thus, an economic distribution of resources for feeding (enzyme production) and fighting (SM production) would be reasonable.

## CONCLUSION

In conclusion, in this work, the roles of *PaSNF1* in vegetative growth, sexual development, and lignocellulose degradation in *Podospora anserina* were investigated. Our study clearly suggested that SNF1 played a critical regulation role in growth, development, and stress response. Importantly, SNF1 can function as a critical global regulator for the SM biosynthesis and cellulase production. In the future, proteomics analysis and CHIP-seq on *PaSNF1* would be performed to identify the interaction partners of *PaSNF1*. This will be crucial to develop deeper understanding on the cellulase-regulating signal transduction processes and the SNF1-mediated regulation mechanism of lignocellulose degradation in *P. anserina*, as well as its effects on growth and development.

## DATA AVAILABILITY STATEMENT

The datasets generated for this study can be found in the SRA database: <https://www.ncbi.nlm.nih.gov/sra/PRJNA597840>, accession number PRJNA597840.

## AUTHOR CONTRIBUTIONS

YL, PY, and NX designed the study. YL, XL, YQ, and SL performed the experiments. YL, GL, SL, and LM analyzed the data. YL and NX wrote the manuscript. All authors reviewed the results and approved the final version of the manuscript.

## FUNDING

This study was supported jointly by the National Natural Science Foundation of China (No. 31601014), the Shenzhen Science and Technology Key Project (No. JSGG20171013091238230), the

Science and Technology Project of Shenzhen City, the Shenzhen Bureau of Science, Technology and Information (No. JCYJ20180305123659726), and Science and Technology Application Demonstration Project (Shenzhen Government, No. KJYY20180201180253571).

## REFERENCES

- Baruffini, E., Goffrini, P., Donnini, C., and Lodi, T. (2006). Galactose transport in *Kluyveromyces lactis*: major role of the glucose permease Hgt1. *FEMS Yeast Res.* 6, 1235–1242. doi: 10.1111/j.1567-1364.2006.00107.x
- Benocci, T., Aguilar-Pontes, M. V., Zhou, M., Seiboth, B., and de Vries, R. P. (2017). Regulators of plant biomass degradation in ascomycetous fungi. *Biotechnol. Biofuels* 10:152. doi: 10.1186/s13068-017-0841-x
- Bills, G. F., and Gloer, J. B. (2016). Biologically active secondary metabolites from the fungi. *Microbiol. Spectr.* 4:FUNK-0009-2016.
- Bischof, R. H., Ramoni, J., and Seiboth, B. (2016). Cellulases and beyond: the first 70 years of the enzyme producer *Trichoderma reesei*. *Microb. Cell Fact.* 15:106. doi: 10.1186/s12934-016-0507-6
- Bok, J. W., and Keller, N. P. (2004). LaeA, a regulator of secondary metabolism in *Aspergillus* spp. *Eukaryot. Cell* 3, 527–535. doi: 10.1128/ec.3.2.527-535.2004
- Bomble, Y. J., Lin, C. Y., Amore, A., Wei, H., Holwerda, E. K., Ciesielski, P. N., et al. (2017). Lignocellulose deconstruction in the biosphere. *Curr. Opin. Chem. Biol.* 41, 61–70. doi: 10.1016/j.cbpa.2017.10.013
- Bourdais, A., Bidard, F., Zickler, D., Berteaux-Lecellier, V., Silar, P., and Espagne, E. (2012). Wood utilization is dependent on catalase activities in the filamentous fungus *Podospora anserina*. *PLoS One* 7:e29820. doi: 10.1371/journal.pone.0029820
- Bradford, M. M. (1976). A rapid and sensitive method for the quantitation of microgram quantities of protein utilizing the principle of protein-dye binding. *Anal. Biochem.* 72, 248–254. doi: 10.1016/0003-2697(76)90527-3
- Brown, D. W., Yu, J. H., Kelkar, H. S., Fernandes, M., Nesbitt, T. C., Keller, N. P., et al. (1996). Twenty-five coregulated transcripts define a sterigmatocystin gene cluster in *Aspergillus nidulans*. *Proc. Natl. Acad. Sci. U.S.A.* 93, 1418–1422. doi: 10.1073/pnas.93.4.1418
- Brown, N. A., de Gouvea, P. F., Krohn, N. G., Savoldi, M., and Goldman, G. H. (2013). Functional characterisation of the non-essential protein kinases and phosphatases regulating *Aspergillus nidulans* hydrolytic enzyme production. *Biotechnol. Biofuels* 6:91. doi: 10.1186/1754-6834-6-91
- Carlson, M. (1999). Glucose repression in yeast. *Curr. Opin. Microbiol.* 2, 202–207. doi: 10.1016/s1369-5274(99)80035-6
- Casamayor, A., Serrano, R., Platara, M., Casado, C., Ruiz, A., and Arino, J. (2012). The role of the Snf1 kinase in the adaptive response of *Saccharomyces cerevisiae* to alkaline pH stress. *Biochem. J.* 444, 39–49. doi: 10.1042/BJ20112099
- Coradetti, S. T., Craig, J. P., Xiong, Y., Shock, T., Tian, C., and Glass, N. L. (2012). Conserved and essential transcription factors for cellulase gene expression in ascomycete fungi. *Proc. Natl. Acad. Sci. U.S.A.* 109, 7397–7402. doi: 10.1073/pnas.1200785109
- Couturier, M., Tangthirasunun, N., Ning, X., Brun, S., Gautier, V., Bennati-Granier, C., et al. (2016). Plant biomass degrading ability of the coprophilic ascomycete fungus *Podospora anserina*. *Biotechnol. Adv.* 34, 976–983. doi: 10.1016/j.biotechadv.2016.05.010
- Cziferszky, A., Seiboth, B., and Kubicek, C. P. (2003). The Snf1 kinase of the filamentous fungus *Hypocrea jecorina* phosphorylates regulation-relevant serine residues in the yeast carbon catabolite repressor Mig1 but not in the filamentous fungal counterpart Cre1. *Fungal Genet. Biol.* 40, 166–175. doi: 10.1016/s1087-1845(03)00082-3
- de Assis, L. J., Ries, L. N., Savoldi, M., Dos Reis, T. F., Brown, N. A., and Goldman, G. H. (2015). *Aspergillus nidulans* protein kinase A plays an important role in cellulase production. *Biotechnol. Biofuels* 8:213. doi: 10.1186/s13068-015-0401-1
- Demain, A. L., and Fang, A. (2000). The natural functions of secondary metabolites. *Adv. Biochem. Eng. Biotechnol.* 69, 1–39.
- Dos Santos, Castro, L., de Paula, R. G., Antonieto, A. C., Persinoti, G. F., Silva-Rocha, R., et al. (2016). Understanding the role of the master regulator XYR1 in *Trichoderma reesei* by global transcriptional analysis. *Front. Microbiol.* 7:175. doi: 10.3389/fmicb.2016.00175
- El-Khoury, R., Sellem, C. H., Coppin, E., Boivin, A., Maas, M. F., Debuchy, R., et al. (2008). Gene deletion and allelic replacement in the filamentous fungus *Podospora anserina*. *Curr. Genet.* 53, 249–258. doi: 10.1007/s00294-008-0180-3
- Espagne, E., Lespinet, O., Malagnac, F., Da Silva, C., Jaillon, O., Porcel, B. M., et al. (2008). The genome sequence of the model ascomycete fungus *Podospora anserina*. *Genome Biol.* 9:R77. doi: 10.1186/gb-2008-9-5-r77
- Feng, J., Zhang, H., Strelkov, S. E., and Hwang, S. F. (2014). The *LmSNF1* gene is required for pathogenicity in the canola blackleg pathogen *Leptosphaeria maculans*. *PLoS One* 9:e92503. doi: 10.1371/journal.pone.0092503
- Fernandes, M., Keller, N. P., and Adams, T. H. (1998). Sequence-specific binding by *Aspergillus nidulans* AflR, a C6 zinc cluster protein regulating mycotoxin biosynthesis. *Mol. Microbiol.* 28, 1355–1365. doi: 10.1046/j.1365-2958.1998.00907.x
- Ferrer-Dalmau, J., Randez-Gil, F., Marquina, M., Prieto, José, A., and Casamayor, A. (2015). Protein kinase Snf1 is involved in the proper regulation of the unfolded protein response in *Saccharomyces cerevisiae*. *Biochem. J.* 468, 33–47. doi: 10.1042/bj20140734
- Ghillebert, R., Swinnen, E., Wen, J., Vandesteene, L., Ramon, M., Norga, K., et al. (2011). The AMPK/SNF1/SnRK1 fuel gauge and energy regulator: structure, function and regulation. *FEBS J.* 278, 3978–3990. doi: 10.1111/j.1742-4658.2011.08315.x
- Grognet, P., Bidard, F., Kuchly, C., Tong, L. C., Coppin, E., Benkhali, J. A., et al. (2014). Maintaining two mating types: structure of the mating type locus and its role in heterokaryosis in *Podospora anserina*. *Genetics* 197, 421–432. doi: 10.1534/genetics.113.159988
- Gupta, V. K., Kubicek, C. P., Berrin, J. G., Wilson, D. W., Couturier, M., Berlin, A., et al. (2016). Fungal enzymes for bio-products from sustainable and waste biomass. *Trends Biochem. Sci.* 41, 633–645. doi: 10.1016/j.tibs.2016.04.006
- Hahn, J.-S., and Thiele, D. J. (2004). Activation of the *Saccharomyces cerevisiae* heat shock transcription factor under glucose starvation conditions by Snf1 protein kinase. *J. Biol. Chem.* 279, 5169–5176. doi: 10.1074/jbc.M311005200
- Hedbacker, K., and Carlson, M. (2008). SNF1/AMPK pathways in yeast. *Front. Biosci.* 13, 2408–2420. doi: 10.2741/2854
- Hong, S. P., and Carlson, M. (2007). Regulation of snf1 protein kinase in response to environmental stress. *J. Biol. Chem.* 282, 16838–16845. doi: 10.1074/jbc.M700146200
- Hu, G., Cheng, P. Y., Sham, A., Perfect, J. R., and Kronstad, J. W. (2008). Metabolic adaptation in *Cryptococcus neoformans* during early murine pulmonary infection. *Mol. Microbiol.* 69, 1456–1475. doi: 10.1111/j.1365-2958.2008.06374.x
- Huberman, L. B., Coradetti, S. T., and Glass, N. L. (2017). Network of nutrient-sensing pathways and a conserved kinase cascade integrate osmolarity and carbon sensing in *Neurospora crassa*. *Proc. Natl. Acad. Sci. U.S.A.* 114, E8665–E8674. doi: 10.1073/pnas.1707713114
- Inglis, D. O., Binkley, J., Skrzypek, M. S., Arnaud, M. B., Cerqueira, G. C., Shah, P., et al. (2013). Comprehensive annotation of secondary metabolite biosynthetic genes and gene clusters of *Aspergillus nidulans*, *A. fumigatus*, *A. niger* and *A. oryzae*. *BMC Microbiol.* 13:91. doi: 10.1186/1471-2180-13-91
- Islam, K. T., Bond, J. P., and Fakhoury, A. M. (2017). FvSNF1, the sucrose non-fermenting protein kinase gene of *Fusarium virguliforme*, is required for cell-wall-degrading enzymes expression and sudden death syndrome development in soybean. *Curr. Genet.* 63, 723–738. doi: 10.1007/s00294-017-0676-9
- Jonsson, L. J., Alriksson, B., and Nilvebrant, N. O. (2013). Bioconversion of lignocellulose: inhibitors and detoxification. *Biotechnol. Biofuels* 6:16. doi: 10.1186/1754-6834-6-16
- Jorgensen, T. R., vanKuyk, P. A., Poulsen, B. R., Ruijter, G. J., Visser, J., and Iversen, J. J. (2007). Glucose uptake and growth of glucose-limited chemostat cultures of *Aspergillus niger* and a disruptant lacking MstA, a high-affinity

## SUPPLEMENTARY MATERIAL

The Supplementary Material for this article can be found online at: <https://www.frontiersin.org/articles/10.3389/fmicb.2020.01038/full#supplementary-material>



- glucose transporter. *Microbiology* 153(Pt 6), 1963–1973. doi: 10.1099/mic.0.2006/005090-0
- Kawaguchi, H., Hasunuma, T., Ogino, C., and Kondo, A. (2016). Bioprocessing of bio-based chemicals produced from lignocellulosic feedstocks. *Curr. Opin. Biotechnol.* 42, 30–39. doi: 10.1016/j.copbio.2016.02.031
- Kubicek, C. P., and Kubicek, E. M. (2016). Enzymatic deconstruction of plant biomass by fungal enzymes. *Curr. Opin. Chem. Biol.* 35, 51–57. doi: 10.1016/j.cbpa.2016.08.028
- Lalucque, H., Malagnac, F., Brun, S., Kicka, S., and Silar, P. (2012). A non-Mendelian MAPK-generated hereditary unit controlled by a second MAPK pathway in *Podospora anserina*. *Genetics* 191, 419–433. doi: 10.1534/genetics.112.139469
- Lee, S. H., Lee, J., Lee, S., Park, E. H., Kim, K. W., Kim, M. D., et al. (2009). GzSNF1 is required for normal sexual and asexual development in the ascomycete *Gibberella zeae*. *Eukaryot. Cell* 8, 116–127. doi: 10.1128/EC.00176-08
- Li, C., Lin, F., Li, Y., Wei, W., Wang, H., Qin, L., et al. (2016). A beta-glucosidase hyper-production *Trichoderma reesei* mutant reveals a potential role of cel3D in cellulase production. *Microb. Cell Fact.* 15:151. doi: 10.1186/s12934-016-0550-3
- Liao, G. Y., Zhao, S., Zhang, T., Li, C. X., Liao, L. S., Zhang, F. F., et al. (2018). The transcription factor Tprfx1 is an essential regulator of amylase and cellulase gene expression in *Talaromyces pinophilus*. *Biotechnol. Biofuels* 11:276. doi: 10.1186/s13068-018-1276-8
- Lichius, A., Seidl-Seiboth, V., Seiboth, B., and Kubicek, C. P. (2014). Nucleocytoplasmic shuttling dynamics of the transcriptional regulators XYR1 and CRE1 under conditions of cellulase and xylanase gene expression in *Trichoderma reesei*. *Mol. Microbiol.* 94, 1162–1178. doi: 10.1111/mmi.12824
- Liu, G., Zhang, L., Qin, Y., Zou, G., Li, Z., Yan, X., et al. (2013). Long-term strain improvements accumulate mutations in regulatory elements responsible for hyper-production of cellulolytic enzymes. *Sci. Rep.* 3:1569. doi: 10.1038/srep01569
- Liu, Q., Li, J., Gao, R., Li, J., Ma, G., and Tian, C. (2019). CLR-4, a novel conserved transcription factor for cellulase gene expression in ascomycete fungi. *Mol. Microbiol.* 111, 373–394. doi: 10.1111/mmi.14160
- Martinez, D., Berka, R. M., Henrissat, B., Saloheimo, M., Arvas, M., Baker, S. E., et al. (2008). Genome sequencing and analysis of the biomass-degrading fungus *Trichoderma reesei* (syn. *Hypocrea jecorina*). *Nat. Biotechnol.* 26, 553–560. doi: 10.1038/nbt1403
- Monroy, A. A., Stappler, E., Schuster, A., Sulyok, M., and Schmoll, M. (2017). A CRE1-regulated cluster is responsible for light dependent production of dihydrotrichotetronin in *Trichoderma reesei*. *PLoS One* 12:e0182530. doi: 10.1371/journal.pone.0182530
- Novy, V., Nielsen, F., Seiboth, B., and Nidetzky, B. (2019). The influence of feedstock characteristics on enzyme production in *Trichoderma reesei*: a review on productivity, gene regulation and secretion profiles. *Biotechnol. Biofuels* 12:238. doi: 10.1186/s13068-019-1571-z
- Oleinikova, G., Denisenko, V., Slinkina, N., and Afyatullov, S. H. (2012). Secondary metabolites of the marine fungus *Aspergillus ustus* KMM 4640. *Chem. Nat. Compd.* 48, 467–469. doi: 10.1007/s10600-012-0276-3
- Ospina-Giraldo, M. D., Mullins, E., and Kang, S. (2003). Loss of function of the *Fusarium oxysporum* SNF1 gene reduces virulence on cabbage and *Arabidopsis*. *Curr. Genet.* 44, 49–57. doi: 10.1007/s00294-003-0419-y
- Pachler, K. G., Steyn, P. S., Vlegaar, R., and Wessels, P. L. (1976). Carbon-13 nuclear magnetic resonance assignments and biosynthesis of aflatoxin B 1 and sterigmatocystin. *J. Chem. Soc. Perkin 1* 11, 1182–1189.
- Paulova, L., Patakova, P., Branska, B., Rychtera, M., and Melzoch, K. (2015). Lignocellulosic ethanol: technology design and its impact on process efficiency. *Biotechnol. Adv.* 33, 1091–1107. doi: 10.1016/j.biotechadv.2014.12.002
- Pusztahelyi, T., Holb, I. J., and Pócsi, I. (2015). Secondary metabolites in fungus-plant interactions. *Front. Plant Sci.* 6:573. doi: 10.3389/fpls.2015.00573
- Ragauskas, A. J., Beckham, G. T., Bidy, M. J., Chandra, R., Chen, F., Davis, M. F., et al. (2014). Lignin valorization: improving lignin processing in the biorefinery. *Science* 344:1246843. doi: 10.1126/science.1246843
- Sanz, P., Alms, G. R., Haystead, T. A. J., and Carlson, M. (2000). Regulatory interactions between the Reg1-Glc7 protein phosphatase and the Snf1 protein kinase. *Mol. Cell. Biol.* 20, 1321–1328. doi: 10.1128/Mcb.20.4.1321-1328.2000
- Schilling, S., and Oesterhelt, C. (2007). Structurally reduced monosaccharide transporters in an evolutionary conserved red alga. *Biochem. J.* 406, 325–331. doi: 10.1042/bj20070448
- Seiboth, B., Karimi, R. A., Phatale, P. A., Linke, R., Hartl, L., Sauer, D. G., et al. (2012). The putative protein methyltransferase LAE1 controls cellulase gene expression in *Trichoderma reesei*. *Mol. Microbiol.* 84, 1150–1164. doi: 10.1111/j.1365-2958.2012.08083.x
- Shen, L., Poree, F. H., Gaslonde, T., Lalucque, H., Chapeland-Leclerc, F., and Ruprich-Robert, G. (2019). Functional characterization of the sterigmatocystin secondary metabolite gene cluster in the filamentous fungus *Podospora anserina*: involvement in oxidative stress response, sexual development, pigmentation and interspecific competitions. *Environ. Microbiol.* 21, 3011–3026. doi: 10.1111/1462-2920.14698
- Silar, P., Dauge, J. M., Gautier, V., Grognet, P., Chablat, M., Hermann-Le Denmat, S., et al. (2019). A gene graveyard in the genome of the fungus *Podospora comata*. *Mol. Genet. Genomics* 294, 177–190. doi: 10.1007/s00438-018-1497-3
- Slot, J. C., and Rokas, A. (2011). Horizontal transfer of a large and highly toxic secondary metabolic gene cluster between fungi. *Curr. Biol.* 21, 134–139. doi: 10.1016/j.cub.2010.12.020
- Stricker, A. R., Mach, R. L., and de Graaff, L. H. (2008). Regulation of transcription of cellulases- and hemicellulases-encoding genes in *Aspergillus niger* and *Hypocrea jecorina* (*Trichoderma reesei*). *Appl. Microbiol. Biotechnol.* 78, 211–220. doi: 10.1007/s00253-007-1322-0
- Sun, J., and Glass, N. L. (2011). Identification of the CRE-1 cellulolytic regulon in *Neurospora crassa*. *PLoS One* 6:e25654. doi: 10.1371/journal.pone.0025654
- Sun, J., Tian, C., Diamond, S., and Glass, N. L. (2012). Deciphering transcriptional regulatory mechanisms associated with hemicellulose degradation in *Neurospora crassa*. *Eukaryot. Cell* 11, 482–493. doi: 10.1128/EC.05327-11
- Tani, S., Kawaguchi, T., and Kobayashi, T. (2014). Complex regulation of hydrolytic enzyme genes for cellulosic biomass degradation in filamentous fungi. *Appl. Microbiol. Biotechnol.* 98, 4829–4837. doi: 10.1007/s00253-014-5707-6
- Tonukari, N. J., Scott-Craig, J. S., and Walton, J. D. (2000). The *Cochliobolus carbonum* SNF1 gene is required for cell wall-degrading enzyme expression and virulence on maize. *Plant Cell* 12, 237–247. doi: 10.1105/tpc.12.2.237
- Tzima, A. K., Paplomatas, E. J., Raayaree, P., Ospina-Giraldo, M. D., and Kang, S. (2011). *VdsNF1*, the sucrose nonfermenting protein kinase gene of *Verticillium dahliae*, is required for virulence and expression of genes involved in cell-wall degradation. *Mol. Plant Microbe Interact.* 24, 129–142. doi: 10.1094/MPMI-09-09-0217
- Vacher, S., Cotton, P., and Fèvre, M. (2003). Characterization of a SNF1 homologue from the phytopathogenic fungus *Sclerotinia sclerotiorum*. *Gene* 310, 113–121. doi: 10.1016/s0378-1119(03)00525-0
- van den Brink, J., and de Vries, R. P. (2011). Fungal enzyme sets for plant polysaccharide degradation. *Appl. Microbiol. Biotechnol.* 91, 1477–1492. doi: 10.1007/s00253-011-3473-2
- Wang, D., Li, Y., Wang, H., Wei, D., Akhberdi, O., Liu, Y., et al. (2018). The AMP-activated protein kinase homolog Snf1 concert carbon utilization, conidia production and the biosynthesis of secondary metabolites in the taxol-producer *Pestalotiopsis microspora*. *Genes* 9:E59. doi: 10.3390/genes9020059
- Wang, X. X., He, P. H., Feng, M. G., and Ying, S. H. (2014). *BbsNF1* contributes to cell differentiation, extracellular acidification, and virulence in *Beauveria bassiana*, a filamentous entomopathogenic fungus. *Appl. Microbiol. Biotechnol.* 98, 8657–8673. doi: 10.1007/s00253-014-5907-0
- Weng, J. K., Li, X., Bonawitz, N. D., and Chapple, C. (2008). Emerging strategies of lignin engineering and degradation for cellulosic biofuel production. *Curr. Opin. Biotechnol.* 19, 166–172. doi: 10.1016/j.copbio.2008.02.014
- Wu, X., Fan, X., Xie, S., Lin, J., Cheng, J., Zhang, Q., et al. (2018). Solar energy-driven lignin-first approach to full utilization of lignocellulosic biomass under mild conditions. *Nat. Catal.* 1, 772–780. doi: 10.1038/s41929-018-0148-8
- Xie, N., Chapeland-Leclerc, F., Silar, P., and Ruprich-Robert, G. (2014). Systematic gene deletions evidence that laccases are involved in several stages of wood degradation in the filamentous fungus *Podospora anserina*. *Environ. Microbiol.* 16, 141–161. doi: 10.1111/1462-2920.12253
- Xie, N., Ruprich-Robert, G., Silar, P., and Chapeland-Leclerc, F. (2015). Bilirubin oxidase-like proteins from *Podospora anserina*: promising thermostable enzymes for application in transformation of plant biomass. *Environ. Microbiol.* 17, 866–875. doi: 10.1111/1462-2920.12549

- Xie, N., Ruprich-Robert, G., Silar, P., Herbert, E., Ferrari, R., and Chapeland-Leclerc, F. (2018). Characterization of three multicopper oxidases in the filamentous fungus *Podospora anserina*: a new role of an ABR1-like protein in fungal development? *Fungal Genet. Biol.* 116, 1–13. doi: 10.1016/j.fgb.2018.04.007
- Yang, J., Li, D., Liu, X., Pan, J., Yan, B., and Zhu, X. (2010). Regulation of virulence factors, carbon utilization and virulence by SNF1 in *Cryptococcus neoformans* JEC21 and divergent actions of SNF1 between cryptococcal strains. *Fungal Genet. Biol.* 47, 994–1000. doi: 10.1016/j.fgb.2010.08.002
- Yenkie, K. M., Wu, W., Clark, R. L., Pflieger, B. F., Root, T. W., and Maravelias, C. T. (2016). A roadmap for the synthesis of separation networks for the recovery of bio-based chemicals: matching biological and process feasibility. *Biotechnol. Adv.* 34, 1362–1383. doi: 10.1016/j.biotechadv.2016.10.003
- Yi, M., Park, J. H., Ahn, J. H., and Lee, Y. H. (2008). MoSNF1 regulates sporulation and pathogenicity in the rice blast fungus *Magnaporthe oryzae*. *Fungal Genet. Biol.* 45, 1172–1181. doi: 10.1016/j.fgb.2008.05.003
- Yin, W. B., Amaike, S., Wohlbach, D. J., Gasch, A. P., Chiang, Y. M., Wang, C. C., et al. (2012). An *Aspergillus nidulans* bZIP response pathway hardwired for defensive secondary metabolism operates through aflR. *Mol. Microbiol.* 83, 1024–1034. doi: 10.1111/j.1365-2958.2012.07986.x
- Young, E. T., Dombek, K. M., Tachibana, C., and Ideker, T. (2003). Multiple pathways are co-regulated by the protein kinase Snf1 and the transcription factors Adr1 and Cat8. *J. Biol. Chem.* 278, 26146–26158. doi: 10.1074/jbc.M301981200
- Yu, J., Son, H., Park, A. R., Lee, S. H., Choi, G. J., Kim, J. C., et al. (2014). Functional characterization of sucrose non-fermenting 1 protein kinase complex genes in the Ascomycete *Fusarium graminearum*. *Curr. Genet.* 60, 35–47. doi: 10.1007/s00294-013-0409-7
- Zhang, T., Sun, X., Xu, Q., Zhu, C., Li, Q., and Li, H. (2013). *PdSNF1*, a sucrose non-fermenting protein kinase gene, is required for *Penicillium digitatum* conidiation and virulence. *Appl. Microbiol. Biotechnol.* 97, 5433–5445. doi: 10.1007/s00253-012-4593-z

**Conflict of Interest:** The authors declare that the research was conducted in the absence of any commercial or financial relationships that could be construed as a potential conflict of interest.

Copyright © 2020 Li, Yan, Lu, Qiu, Liang, Liu, Li, Mou and Xie. This is an open-access article distributed under the terms of the Creative Commons Attribution License (CC BY). The use, distribution or reproduction in other forums is permitted, provided the original author(s) and the copyright owner(s) are credited and that the original publication in this journal is cited, in accordance with accepted academic practice. No use, distribution or reproduction is permitted which does not comply with these terms.