



Nitrate Transporter Gene Expression and Kinetics of Nitrate Uptake by *Populus × canadensis* ‘Neva’ in Relation to Arbuscular Mycorrhizal Fungi and Nitrogen Availability

Fei Wu^{1,2,3†}, Fengru Fang^{2†}, Na Wu⁴, Li Li² and Ming Tang^{1*}

¹ State Key Laboratory of Conservation and Utilization of Subtropical Agro-bioresources, Guangdong Laboratory of Lingnan Modern Agriculture, Guangdong Key Laboratory for Innovative Development and Utilization of Forest Plant Germplasm, College of Forestry and Landscape Architecture, South China Agricultural University, Guangzhou, China, ² College of Forestry, Northwest A&F University, Yangling, China, ³ Key Laboratory of State Forestry and Grassland Administration on Forest Ecosystem Protection and Restoration of Poyang Lake Watershed, College of Forestry, Jiangxi Agricultural University, Nanchang, China, ⁴ School of Life Science, Shanxi Datong University, Datong, China

OPEN ACCESS

Edited by:

Andrea Genre,
University of Turin, Italy

Reviewed by:

Raffaella Balestrini,
Institute for Sustainable Plant
Protection (CNR), Italy
Guido Lingua,
University of Eastern Piedmont, Italy

*Correspondence:

Ming Tang
tangmingyl@163.com

† These authors have contributed
equally to this work

Specialty section:

This article was submitted to
Plant Microbe Interactions,
a section of the journal
Frontiers in Microbiology

Received: 27 July 2019

Accepted: 24 January 2020

Published: 28 February 2020

Citation:

Wu F, Fang F, Wu N, Li L and
Tang M (2020) Nitrate Transporter
Gene Expression and Kinetics of
Nitrate Uptake by
Populus × canadensis ‘Neva’ in
Relation to Arbuscular Mycorrhizal
Fungi and Nitrogen Availability.
Front. Microbiol. 11:176.
doi: 10.3389/fmicb.2020.00176

Plants and other organisms in the ecosystem compete for the limited nitrogen (N) in the soil. Formation of a symbiotic relationship with arbuscular mycorrhizal fungi (AMF) may influence plant competitiveness for N. However, the effects of AMF on plant nitrate (NO_3^-) uptake capacity remain unknown. In this study, a pot experiment was conducted to investigate the effects of N application and *Rhizophagus irregularis* inoculation on the root absorbing area, uptake kinetics of NO_3^- , and the expression of NO_3^- transporter (*NRT*) genes in *Populus × canadensis* ‘Neva’. The results showed that *R. irregularis* colonized more than 70% of the roots of the poplar and increased root active absorbing area/total absorbing area. The uptake kinetics of NO_3^- by poplar fitted the Michaelis–Menten equation. Mycorrhizal plants had a higher maximum uptake rate (V_{\max}) value than non-mycorrhizal plants, indicating that *R. irregularis* enhanced the NO_3^- uptake capacity of poplar. The expression of *NRTs* in roots, namely, *NRT1;2*, *NRT2;4B*, *NRT2;4C*, *NRT3;1A*, *NRT3;1B*, and *NRT3;1C*, was decreased by *R. irregularis* under conditions of 0 and 1 mM NH_4NO_3 . This study demonstrated that the improved NO_3^- uptake capacity by *R. irregularis* was not achieved by up-regulating the expression of *NRTs* in roots. The mycorrhizal pathway might repress root direct pathway in the NO_3^- uptake by mycorrhizal plants.

Keywords: arbuscular mycorrhiza, poplar, nitrate transporter gene, nitrate uptake kinetics, nitrogen fertilization

INTRODUCTION

Nitrogen (N) is an essential component of nucleic acids, proteins, and many other critical biomolecules of living organisms (Castro-Rodríguez et al., 2017). Limited N in terrestrial ecosystems generally causes strong competition between different players, such as plants and/or soil microorganisms (Geisseler et al., 2010). Microorganisms are considered to be more competitive than plants in regard to N uptake due to their unique properties, such as faster growth rates and

larger surface-area-to-volume ratios (Kuzyakov and Xu, 2013). In order to acquire enough N for growth, plants have evolved several N uptake strategies, including changing their root physiological characteristics and gene expression levels in N uptake systems, and establishing symbiosis with microorganisms (Kraiser et al., 2011).

Several different forms of N can be available to plant roots, such as ammonium (NH_4^+), nitrate (NO_3^-), and amino acids (Fan et al., 2017). Nitrate is usually the primary form of inorganic N absorbed by plants in aerobic soils (Xu et al., 2012). The NO_3^- uptake rate is mainly determined by NO_3^- uptake kinetics, which can be modeled by the Michaelis–Menten equation, which denotes the absorption rate of NO_3^- as a function of external NO_3^- concentration (McMurtrie and Näsholm, 2017). Two parameters of Michaelis–Menten kinetics, the maximum uptake rate (V_{\max}) and the Michaelis constant (K_m), can describe N absorption characteristics (York et al., 2016). The V_{\max} value is the maximum influx rate of NO_3^- , whereas the K_m value is the external NO_3^- concentration when the absorption rate is half of V_{\max} and presents the affinity of transporters (York et al., 2016).

Uptake of NO_3^- from soil is mediated by low- (LATS) and high-affinity transport systems (HATS) (Fan et al., 2017). The molecular basis of LATS and HATS mainly includes two families of NO_3^- transporters (NRT): NRT1/PTR (renamed NPF by Lérán et al., 2014) family and NRT2 family (Castro-Rodríguez et al., 2017). The NPF family members are responsible for the LATS, except for NPF6;3/NRT1;1, which has a dual low and high affinity for NO_3^- (von Wittgenstein et al., 2014). Among the 53 known NPF family members in *Arabidopsis*, only AtNPF6;2/AtNRT1;1 and AtNPF4;6/AtNRT1;2 are involved in root NO_3^- influx (Kant, 2018). The NRT2 family has seven members and is responsible for the HATS (von Wittgenstein et al., 2014). The coding genes are induced by a low concentration of NO_3^- and repressed by a high concentration of NO_3^- . AtNRT2;1, AtNRT2;2, AtNRT2;4 and AtNRT2;5 have been found playing a role in root uptake of NO_3^- from soil (Kant, 2018). Of these, AtNRT2;1, in interaction with a NO_3^- assimilation-related protein (NAR2/NRT3), accounts for approximately 75% of the high-affinity NO_3^- absorption (Filleur et al., 2001).

Arbuscular mycorrhizal fungi (AMF), belonging to the monophyletic phylum Glomeromycota, are the most widespread root symbionts and can colonize at least 80% of terrestrial plants (Smith and Read, 2008). AMF acquire up to 20% of their host photosynthates and provide water and mineral nutrients in return (Bago et al., 2000; Kiers et al., 2011). Many ^{15}N -labeling experiments confirmed the ability of AMF to transport N from soil to plants (Govindarajulu et al., 2005; Jin et al., 2005). Plants can acquire large amounts of N through the mycorrhizal pathway (Smith and Smith, 2011). The effects of AMF on the expression of NRT genes have been observed in several plant species, for example, in grapevine (Balestrini et al., 2017), *Solanum lycopersicum* (Ruzicka et al., 2012), and *Lotus japonicus* (Guether et al., 2009). The arbuscular mycorrhizal (AM)-induced alterations in NRTs expression suggest that AMF may affect plant uptake capacity for NO_3^- . However, the impacts of AMF on plant NO_3^- uptake kinetics are poorly understood.

Poplars have great ecological and economic values and can form symbiotic relationships with AMF (Wu et al., 2017). With the publication of the genome of *Populus trichocarpa* (Tuskan et al., 2006), poplar has become a model species for woody plant research (Jansson and Douglas, 2007). In the genome database of *P. trichocarpa*, 68 NPF/NRT1 and 11 NRT2/NRT3 have been putatively identified (Willmann et al., 2014). The genes *NRT1;1*, *NRT1;2*, *NRT2;4B*, and *NRT2;4C* of poplar were the closest homologs to *AtNRT1;1*, *AtNRT1;2*, *AtNRT2;4*, and *AtNRT2;1* of *Arabidopsis*, respectively; and *NRT3;1A*, *NRT3;1B*, and *NRT3;1C* of poplar were the closest homologs to *AtNRT3;1* of *Arabidopsis* (Li et al., 2012; Luo et al., 2013). These genes may play important roles in NO_3^- uptake by poplar because their expression levels are markedly affected by changes in available N (Li et al., 2012; Gan et al., 2015). The objectives of the current research were to (i) evaluate the effects of AMF on NO_3^- uptake kinetics of poplar and (ii) investigate the influence of AMF on NRTs expression under different N levels. The results may provide new insights into the parts AMF play in plant N uptake capacity.

MATERIALS AND METHODS

Plant Material and Fungal Inoculum

Cuttings (6 cm long) of *Populus × canadensis* ‘Neva’ were obtained from a plant nursery in Yangling, Shaanxi Province, China. The cuttings were surface sterilized with 75% ethanol and rinsed with sterile water. After surface sterilization, each cutting was planted in a plastic pot (10 × 8 cm) containing 450 g of growth substrate.

Rhizophagus irregularis (B109) was commercially provided by the Institute of Plant Nutrition and Resources, Beijing Academy of Agriculture and Forestry Sciences, China. The fungal inoculum contained colonized root fragments, hyphae, spores (approximately 50 spores g^{-1}), and cultured sands.

Growth Substrates

The growth substrate consisted of topsoil (0–20 cm) collected from a poplar field in Yangling, Shaanxi Province, China. Before being put into the pots, the growth substrate was sieved (2 mm) and autoclaved (0.11 MPa, 121°C, 2 h). The soil contained soil organic matter, 18.97 mg kg^{-1} ; available N, 38.62 mg kg^{-1} ; available phosphorus, 12.31 mg kg^{-1} ; and available potassium, 140.26 mg kg^{-1} . The pH value was 7.7 (1:5, soil:water).

Experimental Design and Growth Conditions

The experiment was conducted in a greenhouse using a randomized complete block design with two AM status (inoculated with *R. irregularis* or not inoculated with *R. irregularis*) and five N levels (0, 1, 5, 10, or 15 $\text{mM NH}_4\text{NO}_3$), with 30 replicates per treatment. For AM fungal inoculation, each pot received 20 g of inoculum, whereas the non-mycorrhizal treatment received 20 g of autoclaved inoculum and the filtrate (<20 μm) of the inoculum to provide a typical microbial population free of AM propagules (Wu et al., 2017). The cuttings

were grown at a temperature of 25–30°C with 12 h of light per day. Ninety days after planting, N application started. NH_4NO_3 solution was applied to the corresponding treatments every other day. The N treatment lasted for 28 days. The pots were kept at field capacity during the experiment.

AM Colonization

The fresh roots (<2-mm diameter) were cut into 1- to 2-cm fragments and stained with trypan blue according to the method from Phillips and Hayman (1970). The proportion of root length colonized by AMF was estimated under a light microscope ($\times 200$ magnification; Olympus, Tokyo, Japan) using the gridline intersection method (McGonigle et al., 1990). The arbuscular, vesicular, hyphal, and total colonization values were expressed as a percentage of the length of root fragments containing arbuscules, vesicles, hyphae, and all AMF structures, respectively.

Root Absorbing Area

The root absorbing area was determined by a methylene blue colorimetric method (Liu et al., 2014). The roots were sequentially immersed for 90 s in three beakers containing a known volume of 0.2 mM methylene blue solution. Then, the concentration and volume of the remaining methylene blue solution in each beaker were determined by a spectrophotometer (UV mini 1240; Shimadzu, Kyoto, Japan) at 660 nm. Methylene blue was used as the standard. The equations are as follows:

$$\text{Total absorbing area (m}^2\text{)} = [(C - C_1) \times V_1] + [(C - C_2) \times V_2] \times 1.1$$

Active absorbing area (m²) = [(C - C₃) × V₃] × 1.1
 where C (mg mL⁻¹) was the initial concentration of the methylene blue solution; C₁, C₂, and C₃ (mg mL⁻¹) were the concentrations of the methylene blue solution after three root immersions; V₁, V₂, and V₃ (mL) were the volumes of the methylene blue solution after three root immersions.

Determination of NO₃⁻ Uptake Kinetics

Plant NO₃⁻ uptake was measured using the solution depletion method (Gobert and Plassard, 2002) with some modifications. The roots of the intact plants were carefully washed and transferred to a 0.2 mM CaSO₄ solution for pretreatment for 48 h. After pretreatment, the plants were transferred to a Ca(NO₃)₂ solution (containing 0, 0.01, 0.05, 0.1, 0.2, 0.5, or 1 mM NO₃⁻) for 6 h. The NO₃⁻ concentration in the Ca(NO₃)₂ solution was determined by an AA₃ continuous flow analytical system (AA₃ autoanalyzer; Bran + Luebbe GmbH, Norderstedt, Germany) (Hu et al., 2016). The uptake rates were calculated as follows:

$$\text{Uptake rates} = (C_1 - C_2)/(t \times m)$$

where C₁ is the initial concentration of NO₃⁻ (μmol mL⁻¹), C₂ is the final concentration of NO₃⁻ (μmol mL⁻¹), t is the absorption time (h), and m is the root dry weight (g). The kinetic parameters, V_{max} and K_m, were calculated using a non-linear curve-fitting model (Michaelis–Menten kinetics) using the Enzyme Kinetics Module of SigmaPlot 13.0 (SPSS Inc., Chicago, IL, United States).

Quantitative Real-Time PCR Analysis

At harvest, the root and leaf samples were immediately snap-frozen in liquid N and stored at -80°C. RNA was extracted using the cetyl trimethyl ammonium bromide method (Shao

et al., 2014). A DNase treatment was performed to remove residual DNA by using RNase-free DNase I (Invitrogen, Carlsbad, CA, United States). The quantity and quality of RNA were analyzed by measuring the A260/A280 ratio with a spectrophotometer (NanoDrop 2000c; Thermo Scientific, Pittsburgh, PA, United States). The first-strand cDNA was synthesized with 2 μg of total RNA, using a RevertAid first-strand cDNA Synthesis Kit (Thermo Fisher Scientific, Waltham, MA, United States). The gene-specific primers used are listed in **Table 1**. Quantitative real-time polymerase chain reaction (PCR) was performed on a Bio-Rad CFX96 real-time PCR instrument (Bio-Rad, Hercules, CA, United States). The reactions were performed in 20-μL volumes containing 10 μL of SYBR Premix Ex Taq II (TaKaRa, Dalian, China), 0.8 μL of gene-specific primers, 1.0 μL of cDNA template and 8.2 μL of sterile distilled water. The PCR amplification conditions were 94°C for 10 s and then 40 cycles at 58°C for 20 s and 72°C for 30 s. The ubiquitin gene (*UBQ*) was selected as an internal standard (Couturier et al., 2007). Four biological replicates were utilized for each assay. The relative RNA levels of each gene were determined using the 2^{-ΔΔC_T} method (Livak and Schmittgen, 2001).

Statistical Analyses

Experimental data were statistically analyzed using the statistical software package SPSS 13.0 (SPSS Inc., Chicago, IL, United States). The data were tested for normality and homogeneity of variances. A two-way analysis of variance (ANOVA) was used to analyze the effects of N treatment and AMF treatment and their interactions on the measured parameters, at a significance level of P = 0.05. The means were compared by Tukey's multiple comparison test (P = 0.05). Figures were drawn using SigmaPlot 10.0 (Systat Software, San Jose, CA, United States).

RESULTS

AM Colonization

AM colonization structures were observed in more than 70% of the poplar roots after inoculation with *R. irregularis*, whereas no AM structure was observed in NM plants (**Figure 1**). The hyphal colonization was prominent in mycorrhizal poplar roots (**Figure 1C**). With increasing N level, the arbuscular, hyphal, and total colonization rates increased substantially. The highest arbuscular and hyphal colonization rates (58.85 and 90.42%, respectively) were observed in plants treated with 15 mM NH₄NO₃.

Root Absorbing Area

According to the two-way ANOVA, the total absorbing area was notably affected by N treatment and the interaction of N treatment and AMF treatment (**Table 2**). The active absorbing area was affected by N treatment, AMF treatment, and their interaction. The ratio of active absorbing area to total absorbing area was affected by AMF treatment. Nitrogen fertilization increased the total absorbing area and active absorbing area in both NM and AM plants (**Table 3**). The active absorbing area/total absorbing area of AM plants was

TABLE 1 | Primers used for quantitative real-time PCR analysis.

| Gene name | Primer-forward (5'–3') | Primer-reverse (5'–3') |
|-----------------------------|---------------------------|--------------------------|
| <i>NRT1;1</i> ^a | CTAAACCAAGGGAGGCTCCATGAT | CCCAACACAAAAGTAGGCGAAAAG |
| <i>NRT1;2</i> ^a | TCTTTGGTAGCAACTTGAACAA | TCTCTCTCTCTCTCGTCTCCCT |
| <i>NRT2;4B</i> ^a | AATAGAGGAAGGGAATGGCTG | TGAGGTTGTCCCGAATGATAG |
| <i>NRT2;4C</i> ^a | CAGTCCCACAGATACAAC | CTTCCCACTACAACGATTTTC |
| <i>NRT3;1A</i> ^a | CCCCTGCCCAGCTACTTCATA | CAACATGGCACCCTACTTGT |
| <i>NRT3;1B</i> ^a | TCATAGCCTCTTCTTCTACCTTTCC | CCACCTTTCAACTCTGTCCG |
| <i>NRT3;1C</i> ^a | AGAGGTCTCAGTGAAGCGAACAAG | CGCAAATACAAACGCAATTATCAT |
| <i>UBQ</i> ^b | GCACCTCTGGCAGACTACAA | TAAACAGCCGCTCCAACAGT |

Primer sequences were from ^aLi et al. (2012) and ^bCouturier et al. (2007).

higher than that of NM plants under each N level (3.47, 2.51, 2.73, 3.65, and 2.21% under 0, 1, 5, 10, and 15 mM NH_4NO_3 , respectively).

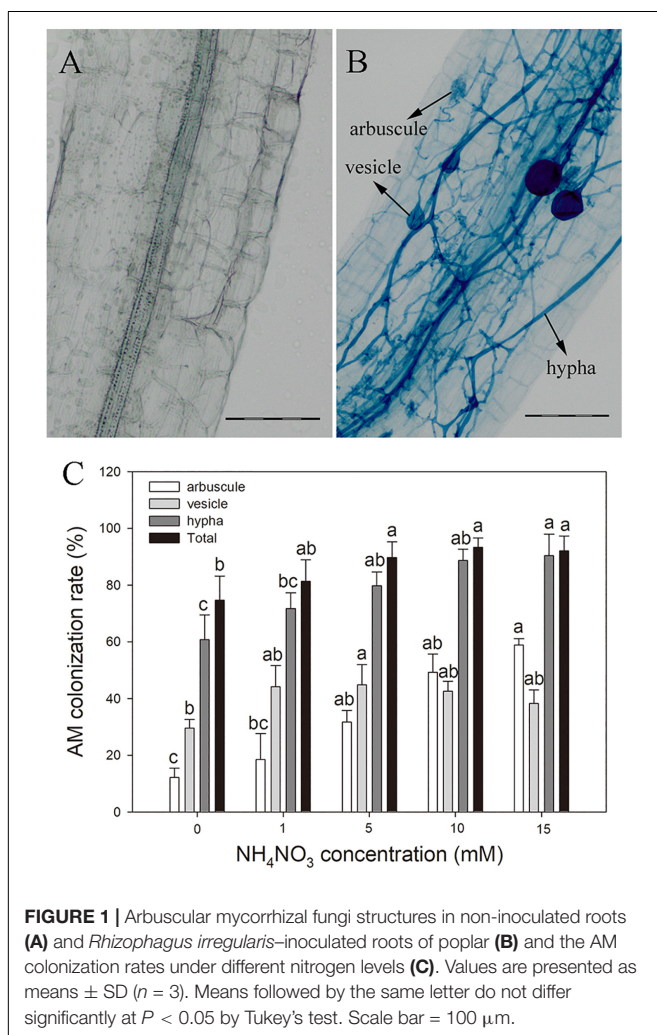
NO_3^- Uptake Kinetics

The NO_3^- uptake rates of both AM and NM plants increased with increasing external NO_3^- concentrations (Figure 2). The

NO_3^- uptake rates were fitted using a non-linear regression of the Michaelis–Menten equation ($V = V_{\max}/(K_m + [\text{NO}_3^-])$). According to the two-way ANOVA results, V_{\max} values were affected by N treatment and AMF treatment, whereas K_m values were affected by N treatment (Table 2). The N \times AMF interaction had no effect on the V_{\max} and K_m values. Nitrogen decreased V_{\max} values but increased K_m values (Table 4). V_{\max} values were higher in AM plants than in NM plants under each N level (46.83, 37.24, 67.07, 86.11, and 64.02% under 0, 1, 5, 10, and 15 mM NH_4NO_3 , respectively). K_m values were not significantly different between AM and NM plants.

NRTs Expression in Leaves and Roots

Nitrogen treatment significantly affected the expression of all the tested N transporter genes (Table 2). AMF treatment significantly affected the expression of *NRT1;1*, *NRT1;2*, *NRT3;1A*, *NRT3;1B*, and *NRT3;1C* in leaves and *NRT1;1*, *NRT1;2*, *NRT2;4B*, *NRT2;4C*, *NRT3;1A*, *NRT3;1B*, and *NRT3;1C* in roots. The interaction of N treatment and AMF treatment significantly affected the expression of *NRT1;1*, *NRT2;4B*, *NRT3;1A*, *NRT3;1B*, and *NRT3;1C* in leaves and *NRT1;1*, *NRT1;2*, *NRT2;4B*, *NRT3;1A*, *NRT3;1B*, and *NRT3;1C* in roots. In roots, the expression of *NRT2;4B*, *NRT2;4C*, *NRT3;1A*, *NRT3;1B*, and *NRT3;1C* in NM plants decreased with increasing N application (Figure 3). In leaves, the expression of *NRT1;1* and *NRT2;4B* increased with increasing N application (Figure 4). AMF reduced the expression of *NRT1;2*, *NRT2;4B*, *NRT2;4C*, *NRT3;1A*, *NRT3;1B*, and *NRT3;1C* in roots (Figure 3) and up-regulated the expression of *NRT2;4B* in leaves under 0 and 1 mM NH_4NO_3 (Figure 4). Under 10 and 15 mM NH_4NO_3 , AMF up-regulated the expression of *NRT1;1* in roots and reduced the expression of *NRT1;1*, *NRT1;2*, and *NRT2;4B* in leaves. Correlation analysis showed that the expression levels of *NRT3;1A*, *NRT3;1B*, and *NRT3;1C* were positively correlated with the expression levels of *NRT1;2*, *NRT2;4B*, and *NRT2;4C* (Table 5).



DISCUSSION

The formation of symbiosis is the starting point of AMF to improve plant nutrient uptake and stress resistance (Zhang et al., 2017). In this study, the structures of arbuscules, vesicles, and internal hyphae were clearly observed inside the roots of

TABLE 2 | Effects of nitrogen treatment (N), AMF treatment (AMF), and N × AMF on the physiological parameters and expression levels of nitrate transporter genes of poplar.

| Parameters | N | | AMF | | N × AMF | |
|--|---------|--------------------|--------|--------------------|---------|--------------------|
| | F | P | F | P | F | P |
| Total absorbing area | 2496.90 | 0.00** | 1.37 | 0.26 ^{ns} | 3.93 | 0.02* |
| Active absorbing area | 568.02 | 0.00** | 597.54 | 0.00** | 357.72 | 0.00** |
| Active absorbing area/total absorbing area | 2.03 | 0.13 ^{ns} | 39.96 | 0.00** | 0.36 | 0.84 ^{ns} |
| V _{max} | 23.75 | 0.00** | 44.74 | 0.00** | 0.37 | 0.83 ^{ns} |
| K _m | 8.63 | 0.00** | 1.56 | 0.23 ^{ns} | 0.56 | 0.70 ^{ns} |
| NRT1;1 (leaf) | 62.10 | 0.00** | 31.12 | 0.00** | 6.84 | 0.00** |
| NRT1;2 (leaf) | 5.39 | 0.00** | 20.94 | 0.00** | 2.23 | 0.09 ^{ns} |
| NRT2;4B (leaf) | 20.67 | 0.00** | 3.71 | 0.06 | 23.63 | 0.00** |
| NRT2;4C (leaf) | 5.63 | 0.00** | 0.30 | 0.59 | 1.57 | 0.21 |
| NRT3;1A (leaf) | 5.40 | 0.00** | 53.94 | 0.00** | 15.88 | 0.00** |
| NRT3;1B (leaf) | 103.03 | 0.00** | 164.53 | 0.00** | 80.57 | 0.00** |
| NRT3;1C (leaf) | 258.62 | 0.00** | 373.58 | 0.00** | 187.58 | 0.00** |
| NRT1;1 (root) | 31.05 | 0.00** | 23.77 | 0.00** | 13.52 | 0.00** |
| NRT1;2 (root) | 45.76 | 0.00** | 54.13 | 0.00** | 26.78 | 0.00** |
| NRT2;4B (root) | 123.35 | 0.00** | 125.58 | 0.00** | 55.95 | 0.00** |
| NRT2;4C (root) | 8.16 | 0.00** | 18.81 | 0.00** | 1.45 | 0.24 ^{ns} |
| NRT3;1A (root) | 14.78 | 0.00** | 38.09 | 0.00** | 3.97 | 0.01* |
| NRT3;1B (root) | 223.50 | 0.00** | 115.53 | 0.00** | 67.93 | 0.00** |
| NRT3;1C (root) | 145.86 | 0.00** | 17.31 | 0.00** | 20.89 | 0.00** |

*P < 0.05; **P < 0.01; ^{ns}non-significant.

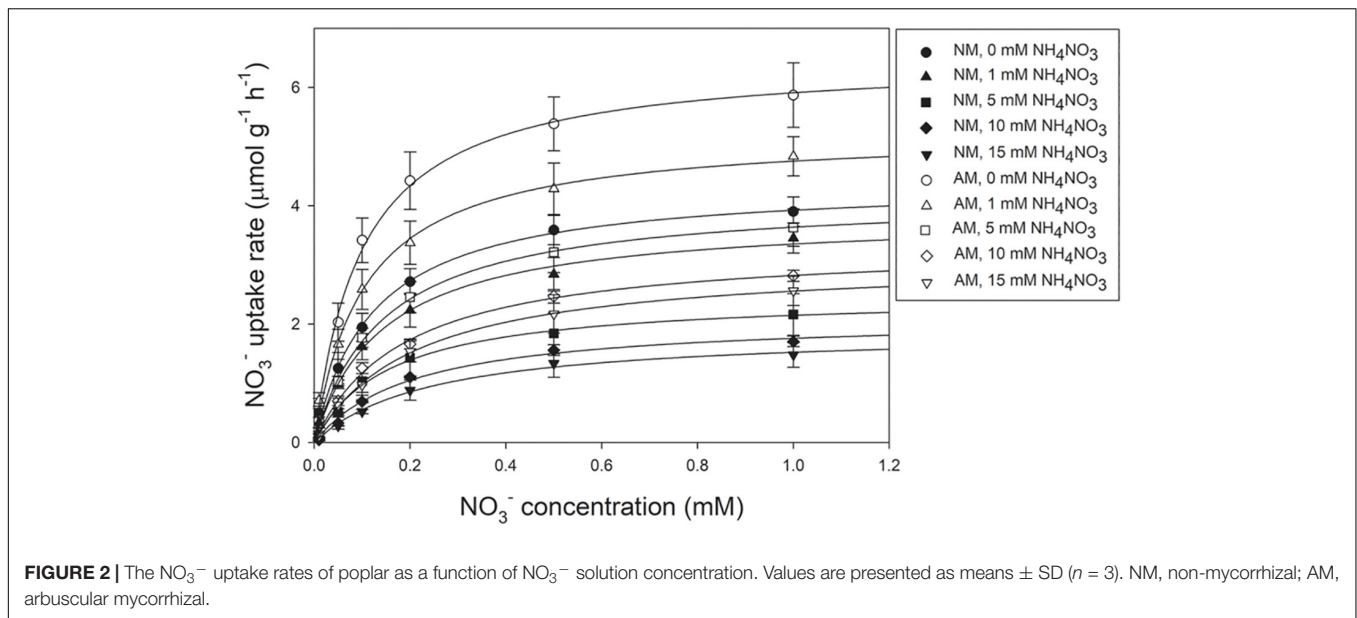
TABLE 3 | Effects of N fertilization and AMF inoculation on root total absorbing area, active absorbing area, and active absorbing area/total absorbing area of poplar.

| NH ₄ NO ₃ (mM) | AMF | Total absorbing area (m ²) | Active absorbing area (m ²) | Active absorbing area/total absorbing area (%) |
|--------------------------------------|-----|--|---|--|
| 0 | NM | 12.54 ± 0.15 ^c | 6.26 ± 0.14 ^d | 49.91 ± 0.76 ^{bc} |
| | AM | 12.86 ± 0.37 ^c | 6.64 ± 0.09 ^a | 51.64 ± 0.91 ^a |
| 1 | NM | 19.13 ± 0.48 ^b | 9.52 ± 0.19 ^c | 49.76 ± 0.46 ^{bc} |
| | AM | 19.76 ± 0.25 ^b | 10.08 ± 0.09 ^b | 51.01 ± 1.00 ^{ab} |
| 5 | NM | 25.50 ± 0.16 ^a | 12.63 ± 0.19 ^a | 49.54 ± 0.43 ^{bc} |
| | AM | 25.76 ± 0.27 ^a | 13.11 ± 0.17 ^a | 50.89 ± 0.40 ^{ab} |
| 10 | NM | 25.78 ± 0.21 ^a | 12.65 ± 0.20 ^a | 49.09 ± 0.38 ^c |
| | AM | 25.78 ± 0.16 ^a | 13.12 ± 0.09 ^a | 50.88 ± 0.69 ^{ab} |
| 15 | NM | 26.23 ± 0.18 ^a | 12.93 ± 0.06 ^a | 49.30 ± 0.17 ^c |
| | AM | 25.63 ± 0.40 ^a | 12.92 ± 0.09 ^a | 50.39 ± 0.56 ^{abc} |

Values are presented as means ± SD (n = 3); within columns, values followed by the same lowercase letter do not differ significantly at P < 0.05 by Tukey's test. NM, non-mycorrhizal; AM, arbuscular mycorrhizal.

mycorrhizal poplar (Figure 1). More than 70% of the roots of the *P. × canadensis* 'Neva' cuttings were colonized by *R. irregularis*, which accords with previous findings that *P. × canadensis* 'Neva' was capable of establishing AM symbiosis (Liu et al., 2014). Nitrogen application influences AMF colonization rate, but inconsistent results have been reported (Calabrese et al., 2017; Wheeler et al., 2017). Using the same intersection method as this study, Wheeler et al. (2017) found a negative effect of chronic N application on the AMF colonization rate of *Acer rubrum*, whereas Calabrese et al. (2017) observed the opposite result in *P. trichocarpa*. The higher photosynthetic capacity in N-applied plants may provide more photosynthates for AMF and may promote AMF colonization (Wu et al., 2017).

The establishment of AM in roots can trigger the changes in root activities and gene expression patterns of root systems, for example, in grapevine (Balestrini et al., 2017; Torres et al., 2018), *Robinia pseudoacacia* (Huang et al., 2019), *L. japonicus* (Guether et al., 2009), and *Lycopersicon esculentum* (Hildebrandt et al., 2002). The results of this study showed that the active absorbing area/total absorbing area ratios of AM plants were higher than those in NM plants, which was in keeping with observations by Liu et al. (2014) and Huang et al. (2019). An increase in root activities suggests a stronger element uptake capacity (Yang et al., 2008). Uptake of NO₃⁻ by plants relies on NO₃⁻ transport systems (Garnett et al., 2010). In this study, the absorption of NO₃⁻ by *P. × canadensis* 'Neva' followed



Michaelis–Menten kinetics, as with other plant species, for example, *Solanum tuberosum* (Sharifi and Zebarth, 2006), *Fagus sylvatica* (Kreuzwieser et al., 2000), *Populus tremuloides* Michx., and *Pinus contorta* Dougl. ex Loud. var. *latifolia* Engelm. (Min et al., 2000). Nitrogen application decreased the V_{\max} value and increased the K_m value, which was consistent with previous studies showing that HATS was under feedback repression by N levels, and was down-regulated by N supply and up-regulated by N limitation (Bassirirad, 2000; Rothstein et al., 2000). Inoculation with *R. irregularis* increased the V_{\max} value of poplar in absorption of NO_3^- , irrespective of N treatment. So far, the effects of AMF on the kinetic analysis of NO_3^- uptake have never been reported. In ectomycorrhizal research, inoculation with *Rhizopogon roseolus* increased the V_{\max} of *Pinus pinaster* for NO_3^- absorption, indicating that ectomycorrhiza conferred plants with higher ability to utilize NO_3^- (Gobert

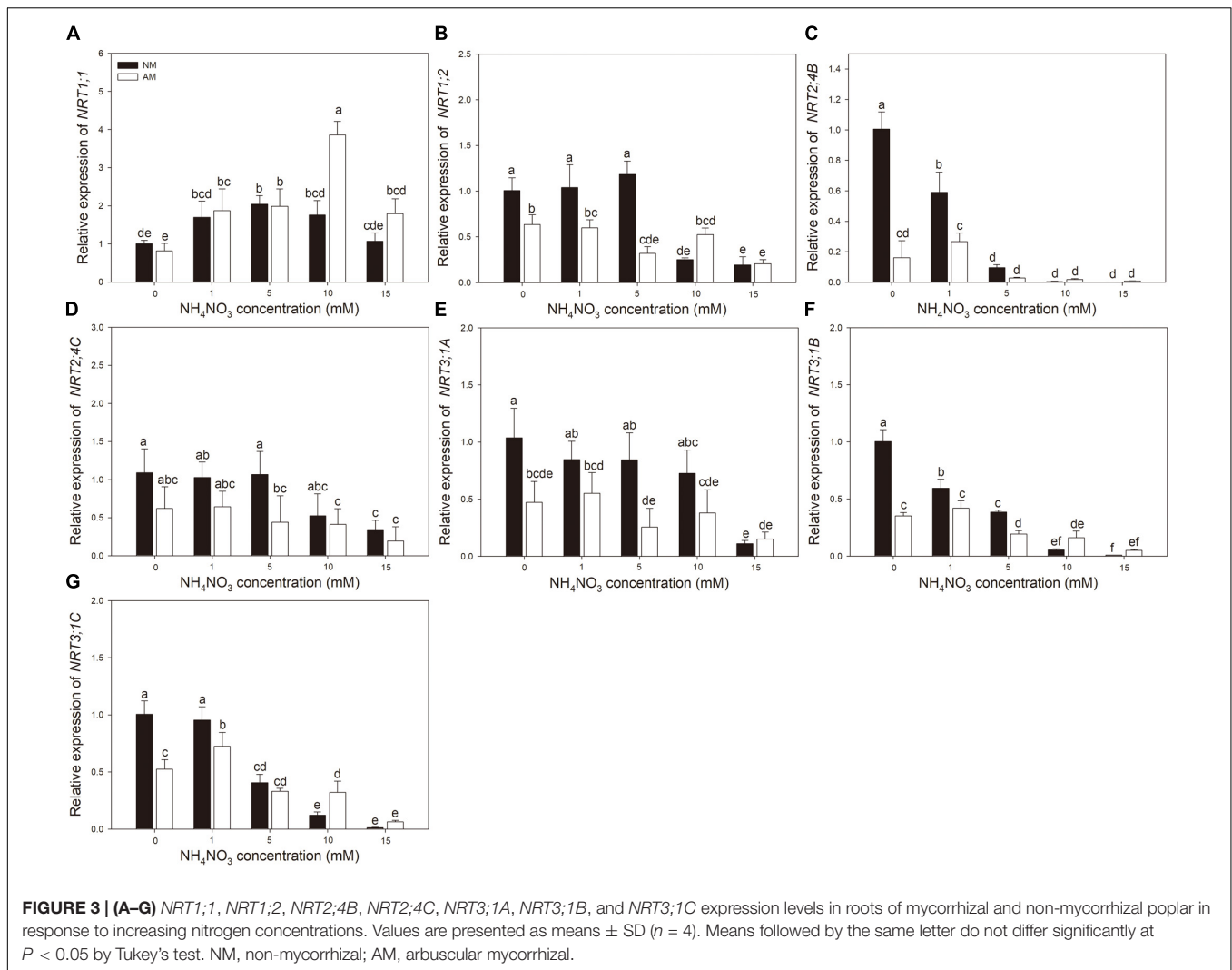
and Plassard, 2002). Kuzyakov and Xu (2013) found a higher V_{\max} and smaller K_m for NO_3^- in microorganisms than in plants, indicating that microorganisms have an advantage in the absorption of NO_3^- , especially at low concentrations. In general, microorganisms absorb the majority of N immediately after N is mineralized from soil organic matter (Kuzyakov and Xu, 2013). The higher NO_3^- uptake rates in AM plants than in NM plants were observed regardless of the external NO_3^- concentration, suggesting that AMF increased the competitive ability of the host to use fluctuating concentrations of NO_3^- in the soil solution (Gobert and Plassard, 2002; Kuzyakov and Xu, 2013).

Regulation of NO_3^- transporters is an essential factor for elucidating NO_3^- uptake and assimilation. Nitrate transport systems have been well identified in *Arabidopsis* (Kant, 2018). AtNPF6;2/AtNRT1;1 was found to be a dual-affinity NO_3^- transporter, participating in low- and high-affinity NO_3^- uptake and function as a NO_3^- sensor (Liu et al., 1999; Ho et al., 2009). AtNPF4;6/AtNRT1;2 was found to be a low-affinity NO_3^- transporter, and AtNPF4;6/AtNRT1;2 has been observed being constitutively expressed in root NO_3^- uptake (Huang et al., 1999). AtNRT2;1 is the main NO_3^- inducible member of the HATS, whereas NRT2;2 plays a minor role in NO_3^- absorption (Li et al., 2007). AtNRT2;5 has a similar role to AtNRT2;4, which plays a main role in NO_3^- uptake under N-starvation condition (Kiba et al., 2012; Lezhneva et al., 2014). Moreover, the interaction of NRT2 members with NAR2;1 (NRT3;1) is necessary to function in the NO_3^- transport capacity of NRT2 (Okamoto et al., 2006; Tsay et al., 2007). The results of this study showed that the expression levels of *NRT2;4B*, *NRT2;4C*, *NRT3;1A*, *NRT3;1B*, and *NRT3;1C* in the roots of poplar were negatively correlated with external NO_3^- concentrations, supporting the suggestion that NRT2 family members are high-affinity transporters (Li et al., 2012). The positive correlations between the expression levels of *NRT3;1A*, *NRT3;1B*, or *NRT3;1C* and the expression levels of *NRT1;2*, *NRT2;4B*, or *NRT2;4C*

TABLE 4 | The kinetic parameters of NO_3^- absorption in the roots of poplar.

| N treatment | AMF treatment | V_{\max} ($\mu\text{mol g}^{-1} \text{h}^{-1}$) | K_m (mM) | R |
|-------------|---------------|---|--------------------------------|------|
| 0 | NM | 4.42 \pm 0.38 ^{bc} | 0.13 \pm 0.05 ^{abc} | 0.92 |
| | AM | 6.49 \pm 1.09 ^a | 0.10 \pm 0.02 ^c | 0.91 |
| 1 | NM | 3.84 \pm 0.52 ^{cd} | 0.15 \pm 0.03 ^{abc} | 0.92 |
| | AM | 5.27 \pm 0.57 ^{ab} | 0.11 \pm 0.03 ^{bc} | 0.90 |
| 5 | NM | 2.49 \pm 0.72 ^{de} | 0.16 \pm 0.02 ^{abc} | 0.79 |
| | AM | 4.16 \pm 0.67 ^{bcd} | 0.18 \pm 0.07 ^{abc} | 0.93 |
| 10 | NM | 1.80 \pm 0.83 ^e | 0.21 \pm 0.06 ^{abc} | 0.97 |
| | AM | 3.35 \pm 0.21 ^{dde} | 0.19 \pm 0.03 ^{abc} | 0.98 |
| 15 | NM | 1.89 \pm 0.56 ^e | 0.24 \pm 0.02 ^a | 0.86 |
| | AM | 3.10 \pm 0.53 ^{cde} | 0.21 \pm 0.03 ^{ab} | 0.90 |

Values are presented as means \pm SD ($n = 3$); within columns, values followed by the same lowercase letter do not differ significantly at $P < 0.05$ by Tukey's test. NM, non-mycorrhizal; AM, arbuscular mycorrhizal.



indicated that they might combine to function in NO_3^- absorption (Tsay et al., 2007). In leaves, the expression of *NRT1;1* and *NRT2;4B* were up-regulated by N application, which may be due to a higher amount of N transferred to leaves with increasing N application. Under N-limiting condition, the transcript levels of *NRTs* in roots increased, and the expression of *NRTs* in leaves decreased, which may be a possible mechanism for poplar adaptation to an N-deficient environment (Luo et al., 2013).

Previous studies reported that AMF can influence NO_3^- uptake of plants by regulating the transcript levels of *NRTs* (Chen et al., 2018; Hildebrandt et al., 2002). With transcriptomics techniques, Balestrini et al. (2017) demonstrated that *Funneliformis mosseae* up-regulated the expression of two putative NO_3^- transporters in the roots of grapevine. In *L. japonicus*, four *NRTs* showed fourfold to 18-fold up-regulation by *Gigaspora margarita* colonization (Guether et al., 2009). Tian et al. (2017) found both up- and down-regulated expression of *NRTs* in the roots of *Triticum aestivum* by *R. irregularis* colonization. The differential responses of *NRTs* to AM colonization may be related to the different functions

of *NRTs*. Some *NRTs* induced by AMF were expressed in arbuscule-containing cortical cells and may be involved in symbiosis development or N transfer through the periarbuscular membrane (Gaude et al., 2012). Hildebrandt et al. (2002) found that *LeNRT2;3* was expressed in inner cortical cells of *L. esculentum*, in which arbuscules and vesicles were mainly distributed. The expression of *LeNRT2;3* was higher in AMF-colonized roots than in non-colonized controls, which probably mediated the positive effects of AMF on NO_3^- uptake from soil and the distribution of NO_3^- to the host (Hildebrandt et al., 2002). In this research, the absorption capacity of poplar for NO_3^- was improved by *R. irregularis*, but no AM-specific *NRT* was detected. The expression levels of *NRT1;2*, *NRT2;4B*, *NRT2;4C*, *NRT3;1A*, *NRT3;1B*, and *NRT3;1C* were lower in *R. irregularis*-colonized poplar roots compared with non-colonized roots at 0 and 1 mM NH_4NO_3 . The mycorrhizal plants have two N absorption pathways, the root direct pathway and the mycorrhizal pathway (Smith and Smith, 2011). Plants that form AM may use the mycorrhizal pathway to absorb NO_3^- and down-regulate the transcript levels of *NRTs* involved in the

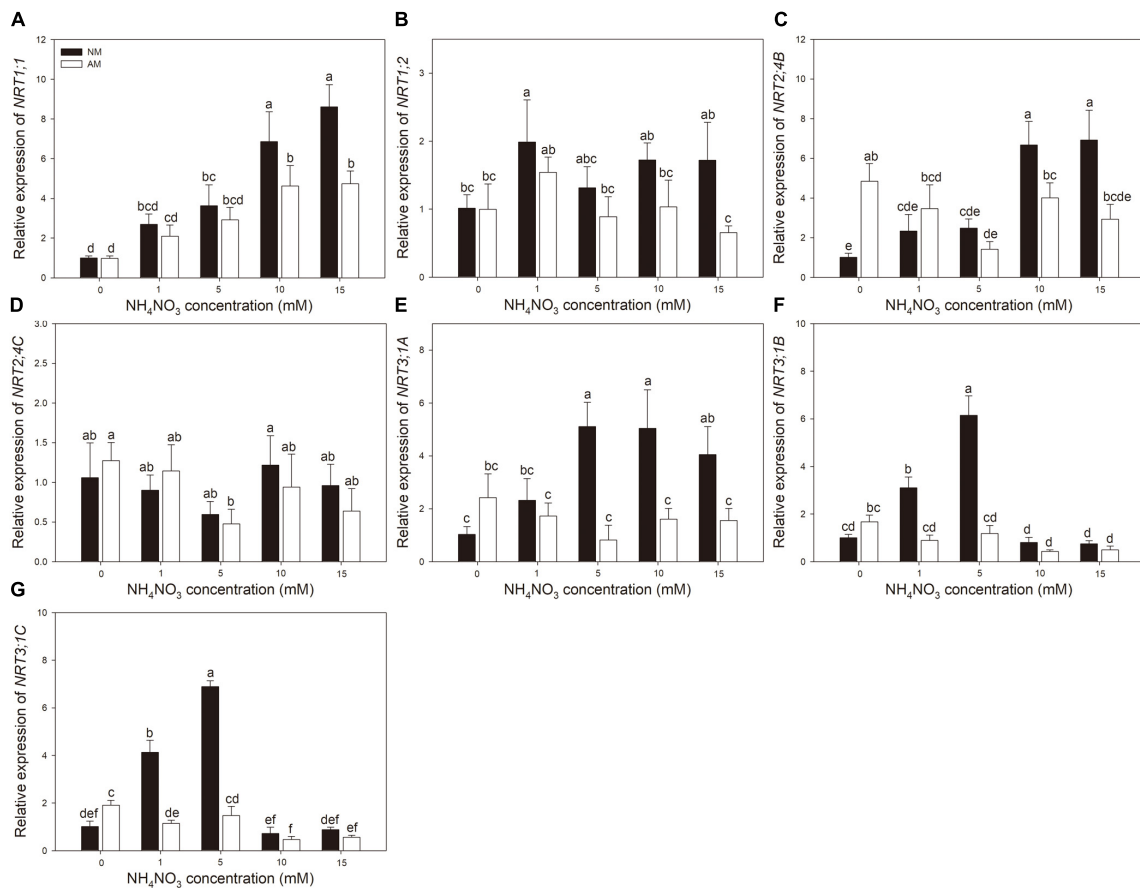


FIGURE 4 | (A–G) *NRT1;1*, *NRT1;2*, *NRT2;4B*, *NRT2;4C*, *NRT3;1A*, *NRT3;1B*, and *NRT3;1C* expression levels in leaves of mycorrhizal and non-mycorrhizal poplar in response to increasing nitrogen concentrations. Values are presented as means \pm SD ($n = 4$). Means followed by the same letter do not differ significantly at $P < 0.05$ by Tukey's test. NM, non-mycorrhizal; AM, arbuscular mycorrhizal.

root direct pathway (Tian et al., 2017). Ruzicka et al. (2012) demonstrated that, under low inorganic N concentrations in the soil, the N uptake of mycorrhizal tomatoes shifted toward mycorrhizal-mediated N uptake over the root direct pathway. *NRT1;2*, *NRT2;4B*, *NRT2;4C*, *NRT3;1A*, *NRT3;1B*, and *NRT3;1C* may be involved in the root direct pathway and repressed in the presence of the mycorrhizal pathway (Ruzicka et al., 2012).

The diverse N sources and N conversion reactions lead to complex N pools in the field, of which organic N is the largest N pool (Kuypers et al., 2018). Most organisms prefer bioavailable N forms, such as NH₄⁺ and NO₃⁻, for which

production is mainly controlled by microbial reactions (Kuypers et al., 2018). Nitrate is the main inorganic N form in aerobic soils (Xu et al., 2012). Compared with microorganisms, plants have shown a lower V_{\max} and higher K_m for NO₃⁻, which indicated a disadvantage in competing for NO₃⁻ (Kuzakov and Xu, 2013). Previous studies demonstrated that AMF could change the microbial community that degrades organic matter and promote plant uptake of inorganic N produced during the degradation of organic matter (Hodge and Fitter, 2010; Nuccio et al., 2013). This study showed that AMF improved the ratio of root active absorbing area/total absorbing area and increased the V_{\max} value of the Michaelis–Menten equation for NO₃⁻ uptake of poplar, resulting in a promotion in NO₃⁻ uptake capacity. The key genes in NO₃⁻ uptake of poplar were repressed by AMF under 0 and 1 mM NH₄NO₃, indicating that the mycorrhizal pathway may have an impact on the root direct pathway for NO₃⁻ uptake. These results implied that the formation of AM symbiosis may be an efficient strategy for plants to compete with microorganisms for the finite available N in the soil. However, the NO₃⁻ uptake kinetics of *R. irregularis* remains unclear (Kuzakov and Xu, 2013). Further studies are needed to investigate the NO₃⁻ uptake

TABLE 5 | Correlation coefficients between the expression levels of the nitrate transporter genes in roots of poplar.

| Index | <i>NRT1;1</i> | <i>NRT1;2</i> | <i>NRT2;4B</i> | <i>NRT2;4C</i> |
|----------------|---------------|---------------|----------------|----------------|
| <i>NRT3;1A</i> | -0.088 | 0.666* | 0.664* | 0.798* |
| <i>NRT3;1B</i> | -0.262 | 0.777* | 0.943* | 0.709* |
| <i>NRT3;1C</i> | -0.173 | 0.744* | 0.859* | 0.655* |

Pearson correlation coefficients r were determined across all nitrogen treatments and inoculation treatments ($n = 40$). * $P < 0.017$ (Bonferroni correction).

characteristics of AMF, in order to elucidate the mechanism of AMF in plant N uptake.

DATA AVAILABILITY STATEMENT

All datasets generated for this study are included in the manuscript.

AUTHOR CONTRIBUTIONS

FW, FF, and MT designed the experiments. FW, FF, NW, and LL performed the experiments. FW and FF analyzed the data. FW and MT wrote the manuscript.

REFERENCES

- Bago, B., Pfeffer, P. E., and Shachar-Hill, Y. (2000). Carbon metabolism and transport in arbuscular mycorrhizas. *Plant Physiol.* 124, 949–958. doi: 10.1104/pp.124.3.949
- Balestrini, R., Salvioli, A., Molin, A. D., Novero, M., Gabelli, G., Paparelli, E., et al. (2017). Impact of an arbuscular mycorrhizal fungus versus a mixed microbial inoculum on the transcriptome reprogramming of grapevine roots. *Mycorrhiza* 27, 417–430. doi: 10.1007/s00572-016-0754-8
- Bassirirad, H. (2000). Kinetics of nutrient uptake by roots: responses to global change. *New Phytol.* 147, 155–169. doi: 10.1046/j.1469-8137.2000.00682.x
- Calabrese, S., Kohler, A., Niehl, A., Veneaultfourrey, C., Boller, T., and Courty, P. E. (2017). Transcriptome analysis of the *Populus trichocarpa*-*Rhizophagus irregularis* mycorrhizal symbiosis: regulation of plant and fungal transportomes under nitrogen starvation. *Plant Cell Physiol.* 58, 1003–1017. doi: 10.1093/pcp/pcx044
- Castro-Rodríguez, V., Cañas, R. A., Fn, D. L. T., Pascual, M. B., Avila, C., and Cánovas, F. M. (2017). Molecular fundamentals of nitrogen uptake and transport in trees. *J. Exp. Bot.* 68, 2489–2500. doi: 10.1093/jxb/erx037
- Chen, A., Gu, M., Wang, S., Chen, J., and Xu, G. (2018). Transport properties and regulatory roles of nitrogen in arbuscular mycorrhizal symbiosis. *Semin. Cell Dev. Biol.* 74, 80–88. doi: 10.1016/j.semcdb.2017.06.015
- Couturier, J., Montanini, B., Martin, F., Brun, A., Blaudez, D., and Chalot, M. (2007). The expanded family of ammonium transporters in the perennial poplar plant. *New Phytol.* 174, 137–150. doi: 10.1111/j.1469-8137.2007.01992.x
- Fan, X., Naz, M., Fan, X., Xuan, W., Miller, A. J., and Xu, G. (2017). Plant nitrate transporters: from gene function to application. *J. Exp. Bot.* 68, 2463–2475. doi: 10.1093/jxb/erx011
- Filleur, S., Dorbe, M. F., Cerezo, M., Orsel, M., Granier, F., Gojon, A., et al. (2001). An *Arabidopsis* T-DNA mutant affected in Nrt2 genes is impaired in nitrate uptake. *FEBS Lett.* 489, 220–224. doi: 10.1016/S0014-5793(01)02096-8
- Gan, H., Jiao, Y., Jia, J., Wang, X., Li, H., Shi, W., et al. (2015). Phosphorus and nitrogen physiology of two contrasting poplar genotypes when exposed to phosphorus and/or nitrogen starvation. *Tree Physiol.* 36, 22–38. doi: 10.1093/treephys/tpv093
- Garnett, T., Conn, V., and Kaiser, B. N. (2010). Root based approaches to improving nitrogen use efficiency in plants. *Plant Cell. Environ.* 32, 1272–1283. doi: 10.1111/j.1365-3040.2009.02011.x
- Gaude, N., Bortfeld, S., Duensing, N., Lohse, M., and Krajinski, F. (2012). Arbuscule-containing and non-colonized cortical cells of mycorrhizal roots undergo extensive and specific reprogramming during arbuscular mycorrhizal development. *Plant J.* 69, 510–528. doi: 10.1111/j.1365-313X.2011.04810.x
- Geisseler, D., Horwath, W. R., Joergensen, R. G., and Ludwig, B. (2010). Pathways of nitrogen utilization by soil microorganisms—a review. *Soil Biol. Biochem.* 42, 2058–2067. doi: 10.1016/j.soilbio.2010.08.021
- Gobert, A., and Plassard, C. (2002). Differential NO₃- dependent patterns of NO₃- uptake in *Pinus pinaster*, *Rhizopogon roseolus* and their ectomycorrhizal association. *New Phytol.* 154, 509–516. doi: 10.1046/j.1469-8137.2002.00378.x

FUNDING

This study was supported by the National Natural Science Foundation of China (41671268, <http://www.nsf.gov.cn/>), National Key Research and Development Program of China (2018YFD0600203) and Natural Science Foundation of Jiangxi Province, China (20192BAB214020).

ACKNOWLEDGMENTS

The authors thank the referees and editors for their valuable advice.

- Govindarajulu, M., Pfeffer, P. E., Jin, H., Abubaker, J., Douds, D. D., Allen, J. W., et al. (2005). Nitrogen transfer in the arbuscular mycorrhizal symbiosis. *Nature* 435, 819–823. doi: 10.1038/nature03610
- Guether, M., Balestrini, R., Hannah, M., He, J., Udvardi, M. K., and Bonfante, P. (2009). Genome-wide reprogramming of regulatory networks, transport, cell wall and membrane biogenesis during arbuscular mycorrhizal symbiosis in *Lotus japonicus*. *New Phytol.* 182, 200–212. doi: 10.1111/j.1469-8137.2008.02725.x
- Hildebrandt, U., Schmelzer, E., and Bothe, H. (2002). Expression of nitrate transporter genes in tomato colonized by an arbuscular mycorrhizal fungus. *Physiol. Plant* 115, 125–136. doi: 10.1034/j.1399-3054.2002.115.0115.x
- Ho, C. H., Lin, S. H., Hu, H. C., and Tsay, Y. F. (2009). CHL1 functions as a nitrate sensor in plants. *Cell* 138, 1184–1194. doi: 10.1016/j.cell.2009.07.004
- Hodge, A., and Fitter, H. (2010). Substantial nitrogen acquisition by arbuscular mycorrhizal fungi from organic material has implications for N cycling. *Proc. Natl. Acad. Sci. U.S.A.* 107, 13754–13759. doi: 10.1073/pnas.1005874107
- Hu, G., He, H., Zhang, W., Zhao, J., Cui, J., Li, B., et al. (2016). The transformation and renewal of soil amino acids induced by the availability of extraneous C and N. *Soil Biol. Biochem.* 96, 86–96. doi: 10.1016/j.soilbio.2016.01.019
- Huang, L., Chen, D., Zhang, H., Song, Y., Chen, H., and Tang, M. (2019). *Funneliformis mosseae* enhances root development and Pb phytostabilization in *Robinia pseudoacacia* in Pb-contaminated soil. *Front. Microbiol.* 10:2591. doi: 10.3389/fmicb.2019.02591
- Huang, N. C., Liu, K. H., Lo, H. J., and Tsay, Y. F. (1999). Cloning and functional characterization of an *Arabidopsis* nitrate transporter gene that encodes a constitutive component of low-affinity uptake. *Plant Cell* 11, 1381–1392. doi: 10.1105/tpc.11.8.1381
- Jansson, S., and Douglas, C. J. (2007). *Populus*: a model system for plant biology. *Annu. Rev. Plant Biol.* 58, 435–458. doi: 10.1146/annurev.arplant.58.032806.103956
- Jin, H., Pfeffer, P. E., Douds, D. D., Piotrowski, E., Lammers, P. J., and Shachar-Hill, Y. (2005). The uptake, metabolism, transport and transfer of nitrogen in an arbuscular mycorrhizal symbiosis. *New Phytol.* 168, 687–696. doi: 10.1111/j.1469-8137.2005.01536.x
- Kant, S. (2018). Understanding nitrate uptake, signaling and remobilisation for improving plant nitrogen use efficiency. *Semin. Cell Dev. Biol.* 74, 89–96. doi: 10.1093/jxb/erq297
- Kiba, T., Feria-Bourrellier, A. B., Lafouge, F., Lezhneva, L., Boutet-Mercey, S., Orsel, M., et al. (2012). The *Arabidopsis* nitrate transporter NRT2.4 plays a double role in roots and shoots of nitrogen-starved plants. *Plant Cell* 24, 245–258. doi: 10.1105/tpc.111.092221
- Kiers, E. T., Duhamel, M., Beesetty, Y., Mensah, J. A., Franken, O., Verbruggen, E., et al. (2011). Reciprocal rewards stabilize cooperation in the mycorrhizal symbiosis. *Science* 333, 880–882. doi: 10.1126/science.1208473
- Kraiser, T., Gras, D. E., Gutiérrez, A. G., González, B., and Gutiérrez, R. A. (2011). A holistic view of nitrogen acquisition in plants. *J. Exp. Bot.* 62, 1455–1466. doi: 10.1093/jxb/erq425

- Kreuzwieser, J., Stulen, I., Wiersema, P., Vaalburg, W., and Rennenberg, H. (2000). Nitrate transport processes in *Fagus-Laccaria-Mycorrhizae*. *Plant Soil* 220, 107–117. doi: 10.1023/A:1004775230952
- Kuyppers, M., Marchant, H., and Kartal, B. (2018). The microbial nitrogen-cycling network. *Nat. Rev. Microbiol.* 16, 263–276. doi: 10.1038/nrmicro.2018.9
- Kuz'yakov, Y., and Xu, X. (2013). Competition between roots and microorganisms for nitrogen: mechanisms and ecological relevance. *New Phytol.* 198, 656–669. doi: 10.1111/nph.12235
- Léran, S., Varala, K., Boyer, J. C., Chiurazzi, M., Crawford, N., Daniel-Vedele, F., et al. (2014). A unified nomenclature of NITRATE TRANSPORTER 1/PEPTIDE TRANSPORTER family members in plants. *Trends Plant Sci.* 19, 5–9. doi: 10.1016/j.tplants.2013.08.008
- Lezhneva, L., Kiba, T., Feria-Bourrellier, A. B., Lafouge, F., Boutet–Mercey, S., and Zoufán, P. (2014). The *Arabidopsis* nitrate transporter NRT2.5 plays a role in nitrate acquisition and remobilization in nitrogen–starved plants. *Plant J.* 80, 230–241. doi: 10.1111/tj.12626
- Li, H., Li, M., Luo, J., Cao, X., Qu, L., Gai, Y., et al. (2012). N-fertilization has different effects on the growth, carbon and nitrogen physiology, and wood properties of slow- and fast-growing *Populus* species. *J. Exp. Bot.* 63, 6173–6185. doi: 10.1093/jxb/ers271
- Li, W., Wang, Y., Okamoto, M., Crawford, N. M., Siddiqi, M. Y., and Glass, A. D. (2007). Dissection of the *AtNRT2.1:AtNRT2.2* inducible high-affinity nitrate transporter gene cluster. *Plant Physiol.* 143, 425–433. doi: 10.1104/pp.106.091223
- Liu, K. H., Huang, C. Y., and Tsay, Y. F. (1999). CHL1 is a dual-affinity nitrate transporter of *Arabidopsis* involved in multiple phases of nitrate uptake. *Plant Cell* 11, 865–874. doi: 10.1105/tpc.11.5.865
- Liu, T., Wang, C. Y., Chen, H., Fang, F. R., Zhu, X. Q., and Tang, M. (2014). Effects of arbuscular mycorrhizal colonization on the biomass and bioenergy production of *Populus × canadensis* ‘Neva’ in sterilized and unsterilized soil. *Acta Physiol. Plant.* 36, 871–880. doi: 10.1007/s11738-013-1465-9
- Livak, K. J., and Schmittgen, T. D. (2001). Analysis of relative gene expression data using real-time quantitative PCR and the 2- $\Delta\Delta$ CT Method. *Methods* 25, 402–408. doi: 10.1006/meth.2001.1262
- Luo, J., Li, H., Liu, T. X., Polle, A., Peng, C. H., and Luo, Z. B. (2013). Nitrogen metabolism of two contrasting poplar species during acclimation to limiting nitrogen availability. *J. Exp. Bot.* 64, 4207–4224. doi: 10.1093/jxb/ert234
- McGonigle, T., Miller, M., Evans, D., Fairchild, G., and Swan, J. (1990). A new method which gives an objective measure of colonization of roots by vesicular-arbuscular mycorrhizal fungi. *New Phytol.* 115, 495–501. doi: 10.1111/j.1469-8137.1990.tb00476.x
- McMurtrie, R. E., and Näsholm, T. (2017). Quantifying the contribution of mass flow to nitrogen acquisition by an individual plant root. *New Phytol.* 218, 119–130. doi: 10.1111/nph.14927
- Min, X. J., Siddiqi, M. Y., Guy, R. D., Glass, A. D. M., and Kronzucker, H. J. (2000). A comparative kinetic analysis of nitrate and ammonium influx in two early-successional tree species of temperate and boreal forest ecosystems. *Plant Cell Environ.* 23, 321–328. doi: 10.1046/j.1365-3040.2000.00546.x
- Nuccio, E. E., Hodge, A., Pett–Ridge, J., Herman, D. J., Weber, P. K., and Firestone, M. K. (2013). An arbuscular mycorrhizal fungus significantly modifies the soil bacterial community and nitrogen cycling during litter decomposition. *Environ. Microbiol.* 15, 1870–1881. doi: 10.1111/1462-2920.12081
- Okamoto, M., Kumar, A., Li, W., Wang, Y., Siddiqi, M. Y., Crawford, N. M., et al. (2006). High-affinity nitrate transport in roots of *Arabidopsis* depends on expression of the NAR2-like gene *AtNRT3.1*. *Plant Physiol.* 140, 1036–1046. doi: 10.1104/pp.105.074385
- Phillips, J., and Hayman, D. (1970). Improved procedures for clearing roots and staining parasitic and vesicular-arbuscular mycorrhizal fungi for rapid assessment of infection. *Transact. Br. Mycol. Soc.* 55, 158–161. doi: 10.1016/S0007-1536(70)80110-3
- Rothstein, D. E., Zak, D. R., Pregitzer, K. S., and Curtis, P. S. (2000). Kinetics of nitrogen uptake by *Populus tremuloides* in relation to atmospheric CO₂ and soil nitrogen availability. *Tree Physiol.* 20, 265–270. doi: 10.1093/treephys/20.4.265
- Ruzicka, D. R., Hausmann, N. T., Barrios-Masias, R. H., Jackson, L. E., and Schachtman, D. P. (2012). Transcriptomic and metabolic responses of mycorrhizal roots to nitrogen patches under field conditions. *Mycorrhiza* 350, 145–162. doi: 10.1007/s11104-011-0890-z
- Shao, Y., Qin, Y., Zou, Y., and Ma, F. (2014). Genome-wide identification and expression profiling of the SnRK2 gene family in *Malus prunifolia*. *Gene* 552, 87–97. doi: 10.1016/j.gene.2014.09.017
- Sharifi, M., and Zebarth, B. J. (2006). Nitrate influx kinetic parameters of five potato cultivars during vegetative growth. *Plant Soil* 288, 91–99. doi: 10.1007/s11104-006-9092-5
- Smith, S., and Read, D. (2008). *Mycorrhizal Symbiosis*, 3rd Edn. Cambridge, MA: Academic Press.
- Smith, S. E., and Smith, F. A. (2011). Roles of arbuscular mycorrhizas in plant nutrition and growth: new paradigms from cellular to ecosystem scales. *Annu. Rev. Plant Biol.* 62, 227–250. doi: 10.1146/annurev-arplant-042110-103846
- Tian, H., Yuan, X., Duan, J., Li, W., Zhai, B., and Gao, Y. (2017). Influence of nutrient signals and carbon allocation on the expression of phosphate and nitrogen transporter genes in winter wheat (*Triticum aestivum* L.) roots colonized by arbuscular mycorrhizal fungi. *PLoS One* 12:e0172154. doi: 10.1371/journal.pone.0172154
- Torres, N., Antolín, M. C., and Goicoechea, N. (2018). Arbuscular mycorrhizal symbiosis as a promising resource for improving berry quality in grapevines under changing environments. *Front. Plant Sci.* 9:897. doi: 10.3389/fpls.2018.00897
- Tsay, Y. F., Chiu, C. C., Tsai, C. B., Ho, C. H., and Hsu, P. K. (2007). Nitrate transporters and peptide transporters. *FEBS Lett.* 581, 2290–2300. doi: 10.1016/j.febslet.2007.04.047
- Tuskan, G. A., Difazio, S., Jansson, S., Bohlmann, J., Grigoriev, I., Hellsten, U., et al. (2006). The genome of black cottonwood. *Populus trichocarpa* (Torr. & Gray). *Science* 313, 1596–1604. doi: 10.1126/science.1128691
- von Wittgenstein, N. J., Le, C. H., Hawkins, B. J., and Ehling, J. (2014). Evolutionary classification of ammonium, nitrate, and peptide transporters in land plants. *BMC Evol. Biol.* 14:11. doi: 10.1186/1471-2148-14-11
- Wheeler, J. A., Frey, S. D., and Stinson, K. A. (2017). Tree seedling responses to multiple environmental stresses: interactive effects of soil warming, nitrogen fertilization, and plant invasion. *Forest Ecol. Manag.* 403, 44–51. doi: 10.1016/j.foreco.2017.08.010
- Willmann, A., Thomfrohde, S., Haensch, R., and Nehls, U. (2014). The poplar NRT2 gene family of high affinity nitrate importers: impact of nitrogen nutrition and ectomycorrhiza formation. *Environ. Exp. Bot.* 108, 79–88. doi: 10.1016/j.envexpbot.2014.02.003
- Wu, F., Zhang, H., Fang, F., Wu, N., Zhang, Y., and Tang, M. (2017). Effects of nitrogen and exogenous *Rhizophagus irregularis* on the nutrient status, photosynthesis and leaf anatomy of *Populus × canadensis* ‘Neva’. *J. Plant Growth Regul.* 36, 824–835. doi: 10.1007/s00344-017-9686-6
- Xu, G., Fan, X., and Miller, A. J. (2012). Plant nitrogen assimilation and use efficiency. *Annu. Rev. Plant Biol.* 63, 153–182. doi: 10.1146/annurev-arplant-042811-105532
- Yang, L., Wang, Y., Kobayashi, K., Zhu, J., Huang, J., Yang, H., et al. (2008). Seasonal changes in the effects of free–air CO₂ enrichment (FACE) on growth, morphology and physiology of rice root at three levels of nitrogen fertilization. *Global Change Biol.* 14, 1844–1853. doi: 10.1111/j.1365-2486.2008.01624.x
- York, L. M., Silberbush, M., and Lynch, J. P. (2016). Spatiotemporal variation of nitrate uptake kinetics within the maize (*Zea mays* L.) root system is associated with greater nitrate uptake and interactions with architectural phenes. *J. Exp. Bot.* 67, 3763–3775. doi: 10.1093/jxb/erw133
- Zhang, H., Wei, S., Hu, W., Xiao, L., and Tang, M. (2017). Arbuscular mycorrhizal fungus *Rhizophagus irregularis* increased potassium content and expression of genes encoding potassium channels in *Lycium barbarum*. *Front. Plant Sci.* 8:440. doi: 10.3389/fpls.2017.00440

Conflict of Interest: The authors declare that the research was conducted in the absence of any commercial or financial relationships that could be construed as a potential conflict of interest.

Copyright © 2020 Wu, Fang, Wu, Li and Tang. This is an open-access article distributed under the terms of the Creative Commons Attribution License (CC BY). The use, distribution or reproduction in other forums is permitted, provided the original author(s) and the copyright owner(s) are credited and that the original publication in this journal is cited, in accordance with accepted academic practice. No use, distribution or reproduction is permitted which does not comply with these terms.