



# Temperature Driven Changes in Benthic Bacterial Diversity Influences Biogeochemical Cycling in Coastal Sediments

## OPEN ACCESS

### Edited by:

Martin G. Klotz,  
Washington State University Tri-Cities,  
United States

### Reviewed by:

Erwan G. Roussel,  
Institut Français de Recherche pour  
l'Exploitation de la Mer (IFREMER),  
France  
Karen Tait,  
Plymouth Marine Laboratory,  
United Kingdom

### \*Correspondence:

Katherine R. Duncan  
katherine.duncan@strath.ac.uk  
Natalie Hicks  
natalie.hicks@sams.ac.uk

† These authors share first authorship

### Specialty section:

This article was submitted to  
Microbiological Chemistry and  
Geomicrobiology,  
a section of the journal  
Frontiers in Microbiology

**Received:** 22 March 2017

**Accepted:** 11 July 2018

**Published:** 22 August 2018

### Citation:

Hicks N, Liu X, Gregory R, Kenny J,  
Lucaci A, Lenzi L, Paterson DM and  
Duncan KR (2018) Temperature  
Driven Changes in Benthic Bacterial  
Diversity Influences Biogeochemical  
Cycling in Coastal Sediments.  
*Front. Microbiol.* 9:1730.  
doi: 10.3389/fmicb.2018.01730

Natalie Hicks<sup>1†</sup>, Xuan Liu<sup>2</sup>, Richard Gregory<sup>2</sup>, John Kenny<sup>2</sup>, Anita Lucaci<sup>2</sup>, Luca Lenzi<sup>2</sup>,  
David M. Paterson<sup>3</sup> and Katherine R. Duncan<sup>1,4\*†</sup>

<sup>1</sup> The Scottish Association for Marine Science, Scottish Marine Institute, Oban, United Kingdom, <sup>2</sup> Centre for Genomic Research, Institute of Integrative Biology, University of Liverpool, Liverpool, United Kingdom, <sup>3</sup> Sediment Ecology Research Group, School of Biology, Scottish Oceans Institute, University of St Andrews, Fife, United Kingdom, <sup>4</sup> Strathclyde Institute of Pharmacy and Biomedical Sciences, University of Strathclyde, Glasgow, United Kingdom

Marine sediments are important sites for global biogeochemical cycling, mediated by macrofauna and microalgae. However, it is the microorganisms that drive these key processes. There is strong evidence that coastal benthic habitats will be affected by changing environmental variables (rising temperature, elevated CO<sub>2</sub>), and research has generally focused on the impact on macrofaunal biodiversity and ecosystem services. Despite their importance, there is less understanding of how microbial community assemblages will respond to environmental changes. In this study, a manipulative mesocosm experiment was employed, using next-generation sequencing to assess changes in microbial communities under future environmental change scenarios. Illumina sequencing generated over 11 million 16S rRNA gene sequences (using a primer set biased toward bacteria) and revealed Bacteroidetes and Proteobacteria dominated the total bacterial community of sediment samples. In this study, the sequencing coverage and depth revealed clear changes in species abundance within some phyla. Bacterial community composition was correlated with simulated environmental conditions, and species level community composition was significantly influenced by the mean temperature of the environmental regime ( $p = 0.002$ ), but not by variation in CO<sub>2</sub> or diurnal temperature variation. Species level changes with increasing mean temperature corresponded with changes in NH<sub>4</sub> concentration, suggesting there is no functional redundancy in microbial communities for nitrogen cycling. Marine coastal biogeochemical cycling under future environmental conditions is likely to be driven by changes in nutrient availability as a direct result of microbial activity.

**Keywords:** benthic biogeochemistry, microbial communities, biogeochemical cycles, environmental change, benthic microbial ecology, marine sediments

## INTRODUCTION

Marine sediments play a vital role in global biogeochemical cycling, particularly in terms of carbon, nitrogen and oxygen dynamics (Glud, 2008). The predicted global climate change scenarios (IPCC, 2014) will result in marine sediments being subjected to many environmental pressures, e.g., increasing mean temperature, greater temperature fluctuation, and increasing CO<sub>2</sub> levels (ocean acidification: OA) (Doney et al., 2009; Dossena et al., 2012). As a direct consequence of rising atmospheric carbon emissions, global average temperature is expected to rise by ~4°C by 2100; and ocean pH, as a result of acidification, is predicted to decline to 7.8 in the same time period (0.2 pH units lower than pre-industrial levels) (Caldeira and Wickett, 2003; Kroeker et al., 2013; IPCC, 2014). It is recognized that many of the key ecosystem services (Beaumont et al., 2007) provided by marine benthic habitats are driven by microbial activity (Prosser and Head, 2007; Bertics and Ziebis, 2009; Gilbertson et al., 2012), such as the nitrogen fixation carried out by the cyanobacteria genera *Trichodesmium* and *Crocospaera* (Hutchins et al., 2013).

Biogeochemical cycling within sediments, and at the sediment water interface, varies with sediment type (Aldridge et al., 2017; Hicks et al., 2017a), and this is reflected in the different microbial communities (Currie et al., 2017; Kitidis et al., 2017). Cohesive coastal sediments, such as those found in estuaries and intertidal mudflats, tend to have a high organic carbon content, and the sediment biogeochemical cycling is heavily influenced by diffusive processes (Hicks et al., 2017a). Considering the contribution of benthic microbes to ecosystem services (Bell et al., 2005), particularly biogeochemical cycling (Dyksma et al., 2016), it is vital that we understand how microbial population dynamics are likely to shift under future climate change scenarios, and how this may affect ecosystem service provision.

Climate driven changes, such as warming and elevated CO<sub>2</sub>, are known to alter many biogeochemical cycles, such as the nitrogen cycle (nitrification and ammonia oxidation) (Kitidis et al., 2011, 2017) which are mediated by microbial assemblages (Hutchins and Fu, 2017). There is substantial evidence that benthic systems will respond to predicted changes in temperature and CO<sub>2</sub>; both on an ecosystem and individual species level (Bulling et al., 2010; Hicks et al., 2011; Godbold and Solan, 2013; Cartaxana et al., 2015). Individual stressor studies have shown how warming elicits varied responses in microbial communities, with some heterotrophic bacteria responding positively with increasing growth (Vázquez-Domínguez et al., 2012), and other smaller bacteria decreasing in size (Moran et al., 2015), with implications for nutrient cycling in coastal sediments (Alsterberg et al., 2011). Changes in pH through ocean acidification (elevated CO<sub>2</sub>) also show mixed effects on benthic microbial communities, with abundance of ammonia oxidizing bacteria (AOB) and denitrifiers decreasing in Arctic sediments as a response to OA (Tait et al., 2013), although ammonia oxidization rates appeared unaffected (Kitidis et al., 2011).

Anthropogenically-driven environmental changes are likely to occur simultaneously, and integration of multiple stressors into experimental designs is likely to produce differing responses to

those measured for single stressor studies (Crain et al., 2008; Kenworthy et al., 2016; Pendleton et al., 2016). This, combined with the natural variability in many intertidal systems (such as changes in temperature, salinity, exposure) (Benedetti-Cecchi et al., 2006; Molinos and Donohue, 2010; García Molinos and Donohue, 2011) adds to the complexity in interpreting and understanding stressor specific responses and potential shifts in microbial community composition (Fu et al., 2007).

The high diversity typically found within benthic microbial communities may make benthic ecosystems more resistant to environmental change (Kerfahi et al., 2014), ensuring the biogeochemical functions of microbial assemblages remain constant. Previous studies examining benthic microbial community composition and diversity have used a range of “fingerprinting” techniques, such as phospholipid fatty acid (PLFA) analysis to estimate biomass and identify key biomarkers (Findlay and Watling, 1998; Mayor et al., 2012; Sweetman et al., 2014; Main et al., 2015); terminal restriction fragment length polymorphism (T-RFLP) (Moss et al., 2006; Febria et al., 2012; Tait et al., 2015), and denaturing gradient gel electrophoresis (DGGE) (Bolhuis et al., 2013).

To-date, few studies have examined the effects of combined environmental stressors on microbial benthic communities (Currie et al., 2017), and to our knowledge this is the first to integrate natural variability as an additional stressor. This study uses next generation sequencing (Illumina MiSeq) to identify changes in microbial community composition from a manipulative mesocosm study with a focus on biodiversity driven changes in biogeochemical function. Experimental environmental change variables included ambient and elevated CO<sub>2</sub>; elevated temperature; and temporal variability (diurnal temperature fluctuation) which is reflective of *in situ* changes in intertidal habitats. Predictions of future temperature elevation are often referred to as a mean global rise, and the diurnal variability of temperature in this experimental design represents the change in both mean temperature, but also the extremes experienced particularly in coastal and tidal ecosystems. The 16S rRNA gene was sequenced from environmental DNA extracted from the incubated intertidal cohesive sediment samples at the end of the experiment. This provides insight into microbial responses toward environmental change, and we discuss the implications on marine biogeochemical cycling. This study harnesses advanced sequencing technology to provide essential understanding of the global consequences of climate change on microbial community composition. We hypothesize that shifts in microbial community assemblages will be a response to changing environmental conditions, and this may be synergistic or additive.

## MATERIALS AND METHODS

### Sample Collections and Processing

Surface sediment (<2 cm depth) was collected from the Ythan Estuary tidal mud flats in, Aberdeenshire, Scotland, UK (57° 20.085'N, 02° 0.206' W) in spring/early summer 2008 and sieved (500 μm) in a seawater bath (UV sterilized, 10 μm filtered, salinity 33) to remove macrofauna. The sediment was left to

settle for 48 h before the supernatant was removed. Additional microphytobenthos (MPB)-rich sediment was collected at the same time, and placed under constant light in a shallow tray for 48 h. The sediment was then homogenized and placed in perspex mesocosms to a depth of 10 cm (785 cm<sup>3</sup>), as previously described (Bulling et al., 2010; Hicks et al., 2011). The MPB-rich sediment was also homogenized and distributed (125 cm<sup>3</sup>) on the surface of sediment in each mesocosm, and topped up with seawater to an overlying depth of 20 cm. This water was replaced after 24 h to reduce any biogeochemical fluxes associated with sediment homogeneity and mesocosm assembly (Ieno et al., 2006). The mesocosms were then placed into environmental chambers for the duration of the experiment.

## Mesocosm Experiments

Mesocosms were placed in two environmental chambers (V 4100, Vötsch Industrietechnik, temperature control  $\pm$  0.1°C), with each chamber running at one of two CO<sub>2</sub> treatments [380 ppmv (ambient; L) and 1,000 ppmv (elevated; H)]. The experiments were run on a 12 h light-12 h dark (L/D) cycle using high intensity discharge sodium lamps (model GE11678, 400w  $\times$  2, average 300  $\mu$ moles m<sup>-2</sup> s<sup>-1</sup>) to allow MPB photosynthesis. Eighteen unique environmental regimes were used, consisting of three mean temperatures (6°, 12°, and 18°C), two atmospheric CO<sub>2</sub> concentrations, and three fluctuating temperature regimes (FTR = 1°, 3°, and 6°C) around the mean (one complete fluctuation cycle every 24 h). Experimental design included three replicates ( $n$  = 3) per environmental regime (Table 1, Figure S1).

Atmospheric CO<sub>2</sub> concentrations were maintained as previously described (Bulling et al., 2010; Hicks et al., 2011). Mesocosms were randomly positioned within each environmental chamber to factor out any spatial heterogeneity effects. Each experiment was run for 7 days.

## MPB Biomass and Sediment Sampling

MPB biomass was measured in each mesocosm prior to sediment and water sampling, using non-invasive Pulse Amplitude Modulated (PAM) fluorometry to estimate chlorophyll content, following the methodology described in Consalvey et al. (2005) and Hicks et al. (2011). Sediment samples were taken at the end of each experiment using the cryolander and contact core technique (Honeywill et al., 2002) using LN<sub>2</sub> to freeze the sediment surface (diameter 50 mm, depth ~2–3 mm). Sediment samples were individually wrapped in foil and immediately stored in a –80°C freezer until DNA extraction.

## Nutrient Analysis

Water samples (filtered at 0.45  $\mu$ m) were taken from the overlying water in each mesocosm at the end of the experiment. NH<sub>4</sub>, NO<sub>x</sub>, (nitrate and nitrite) and PO<sub>4</sub> concentration were measured using a flow through injector analyser (FIA Star 5010 series) with an artificial seawater carrier solution (Bulling et al., 2010).

## Isolation of Sediment Metagenomic DNA

Previously established protocols were used to extract high quality environmental DNA from all 54 sediment samples

**TABLE 1** | Manipulative mesocosm design, representing the sample ID and experimental conditions of all 18 unique treatments.

Treatment ID	CO <sub>2</sub> Treatment (ppmv)	Mean Temperature (°C)	Temperature Fluctuation (°C)
L6-1	380	6	1
H6-3	1,000	6	3
L6-6	380	6	6
H6-1	1,000	6	1
L6-3	380	6	3
H6-6	1,000	6	6
H12-3	1,000	12	3
L12-1	380	12	1
H12-1	1,000	12	1
L12-6	380	12	6
L12-3	380	12	3
H12-6	1,000	12	6
L18-1	380	18	1
H18-3	1,000	18	3
H18-6	1,000	18	6
L18-3	380	18	3
H18-1	1,000	18	1
L18-6	380	18	6

(Duncan et al., 2014, 2015). No blank DNA control was included in the experimental design; therefore, laboratory contamination cannot be ruled out (Salter et al., 2014). Thawed sediment was centrifuged to remove associated water and eDNA was extracted from approximately 200 mg of each sediment sample using the Fast DNA Spin Kit for Soils according to the manufacturer's recommendation (MP Biomedicals, Solon, OH, USA) and stored at –20°C. Concentration and integrity of isolated DNA was determined by UV spectroscopy and agarose gel electrophoresis (1% agarose, 1  $\times$  Tris-acetate-EDTA buffer, strained with ethidium bromide) (Sambrook et al., 1989). A total of 5  $\mu$ L of extracted genomic DNA for each of the 54 samples was pipetted into a 96 well plate, after being diluted to 1 ng/ $\mu$ L and sent on dry ice overnight to “The Centre of Genomic Research,” Liverpool for sequencing. Samples from each treatment ( $n$  = 3) were named according to their environmental treatment e.g., H6-1 represents High CO<sub>2</sub>; 6°C mean temperature; and 1°C temperature fluctuation (Table 1).

## 16S rRNA Gene Amplification and Sequencing

Environmental DNA was extracted from all 54 sediment samples and the 16S rRNA gene was amplified using primers 515F and 806R targeting the V4 region of the 16S rRNA gene, and thus biased to the amplification of bacterial DNA (Caporaso et al., 2011; D'Amore et al., 2016) and sequenced using an Illumina MiSeq platform. The read counts before and after adapter trimming and quality control are summarized (Table S1). Further analysis used only R1 and R2 reads and the samples H18-3b and L18-6c were excluded from the dataset due to low pair reads [ $<$ 100 base pairs (bp)].

Following adaptor sequence removal and quality trimming, the remaining 52 samples contained between 149,199 and 1,107,840 trimmed reads (**Table S1**). Amplicon generation targeting the 16S rRNA gene was performed for each of the 54 environmental DNA samples, and amplified by 10 cycles of PCR using the Kapa enzyme (see **Supplementary Material** for detailed methodology). DNA concentrations were recorded using a Qubit fluorometer (ThermoFisher) and scanned on the Fragment Analyser (Advanced Analytical). This allowed pooling of samples based on a size selection of 350–650 base pairs. Sequencing was carried out on an Illumina MiSeq at  $2 \times 250$  base pair (bp) paired-end sequencing with v2 chemistry. Fragmented PhiX phage was added to the sequence library in order to increase the sequence complexity. Sequences are published in the European Nucleotide Archive (ENA) under the study accession number PRJEB13670 and sample accession numbers ERS1124371-ERS1124422).

### Grouping Sequences Into Operational Taxonomic Units

A metadata file was created to describe each sample, and an error calculation was run by clustering sequences at 99%, identifying and generating a consensus sequence for the cluster. Chimera detection used a dataset of 16S rRNA genes as potential “parent” sequences in addition to using the most common sequences in the dataset. Post-processing of the Illumina sequence reads included quality control and clustering reads into operational taxonomic units (OTUs) at 99% sequence identity. A minimum cluster size was set to remove clusters containing fewer than four sequences. OTU-picking was done using QIIME to cluster sequences, remove chimeras and define OTU abundance. This final dataset was then clustered at 97% sequence similarity to identify taxonomy from the Greengenes database, version 12.8 (McDonald et al., 2012), using the RPD classifier (Wang et al., 2007).

For detailed methodology on sequence procedures, including scripts used in QIIME, alpha and beta diversity and rarefaction statistical analysis, please see **Supplementary Material**.

### Metagenomic Analysis

Over 11 million sequences (11,745,334) passed the quality control filters and all 52 samples were pooled into a single metadata file, which was processed for metagenomic analysis using QIIME (Caporaso et al., 2010). In order to identify and quantify sequences at a particular taxonomic level, the sequences were first grouped into “Operational Taxonomic Units” (OTUs) by clustering sequences into groups at 97% sequence identity. To account for any errors that may cause over-estimation of OTUs, firstly, an error correction step was included and involved clustering the sequences at 99% identity, resulting in 8,383,911 OTUs. Secondly, reference-based chimera detection and *de-novo* chimera detection was carried out. The number of clusters with a taxon assignment was 198,797; the majority of OTUs were assigned to bacterial taxa (196,735) with a small number of archaeal taxa (1,863) and no eukaryotic taxa due to the bias of the primers used to target the V4 region of the 16S rRNA gene (D’Amore et al., 2016). The number of OTUs for each sample (excluding samples H18-3b and L18-6c) ranged from

74,063 to 549,668, of which between 94.21 and 97.86% were aligned to a taxa (**Table S2**). The community composition for each sample was analyzed for each taxonomic rank (kingdom to species) (data not shown). Stacked bar plots were generated using data from QIIME showing the relative species level abundance across all samples. This was further divided into two artificial groupings, the abundant “major” species (comprising >1% of the total bacterial community within a sample) and the “minor” species (comprising <1% of the total bacterial community within a sample).

### Canonical Correspondence Analysis (CCA)

Canonical Correspondence Analysis was carried out in R (v. 3.2.3, R Development Core Team, 2016) using the “vegan” package (v. 3.2.2). The environmental variables “mean temperature,” “fluctuation,” and “CO<sub>2</sub>” were used to determine any trends of microbial community assemblage (OTUs), with the nutrient concentrations (NH<sub>4</sub>, NO<sub>x</sub>, and PO<sub>4</sub>) as additional explanatory variables. A separate CCA was carried out with the same explanatory variables on larger groupings of OTUs (to either Class or Phylum) to compare trends at lower species resolution.

### Richness and Diversity Analysis

To negate the effect of sample size on estimating observed richness, OTU tables were repeatedly sub-sampled (rarefied) using QIIME and three measures of diversity were estimated: Chao1; the observed number of species; and the phylogenetic diversity (PD). These estimates were plotted as rarefaction curves using QIIME scripts (**Figure S3**). The rarefaction curves for all samples did not approach an asymptote, suggesting additional diversity could be uncovered with further sequencing. The observed number of species was defined as the number of distinct OTUs within a sample. The average observed species richness for each sample varied from 5,277 (L18-6a) to 6,181 (L18-1c) (**Table S4**). Chao1 (a non-parametric diversity estimator that predicts the degree to which the number of observed OTUs represented the predicted number of OTUs) was calculated to estimate richness at the species level. The average Chao1 species estimate for each sample varied from 13,425 (L12-3b) to 21,245 (L12-1b) (**Table S4**) (Chao, 1984; Chao and Lee, 1992; Colwell and Coddington, 1994). When comparing the difference between observed and predicted (Chao1) OTU diversity, sample L12-3b had the smallest difference (8,113 OTUs) representing a total of 39.6% of the predicted OTUs and L12-1b had the highest difference (15,160 OTUs) representing 28.6% of the predicted OTUs. The phylogenetic diversity (PD) represents the minimum total branch length that covers all taxa within a sample on a phylogenetic tree, therefore a smaller value indicates a reduced expected taxonomic diversity, whilst a larger value indicates a higher expected diversity (Faith, 1992). The PD values for this dataset ranged from 323 (L18-6a) to 434 (H18-6c).

To compare the similarity of samples based on the bacterial sequences, the distance between each sample was calculated using a UniFrac metric. The distance was defined as the sum of the unshared branch lengths between two samples divided by the total branch length (shared and unshared) of two samples



(Lozupone and Knight, 2005). The fraction of the branch length unique to each sample was then calculated (i.e., the lower this value, the more similar the two samples are) using weighted UniFrac distances which takes into account OTU abundance and branch weights accordingly (as opposed to an unweighted UniFrac distance which would consider only OTU presence/absence) (Lozupone and Knight, 2005, 2007).

## RESULTS

### Metagenomic Analysis

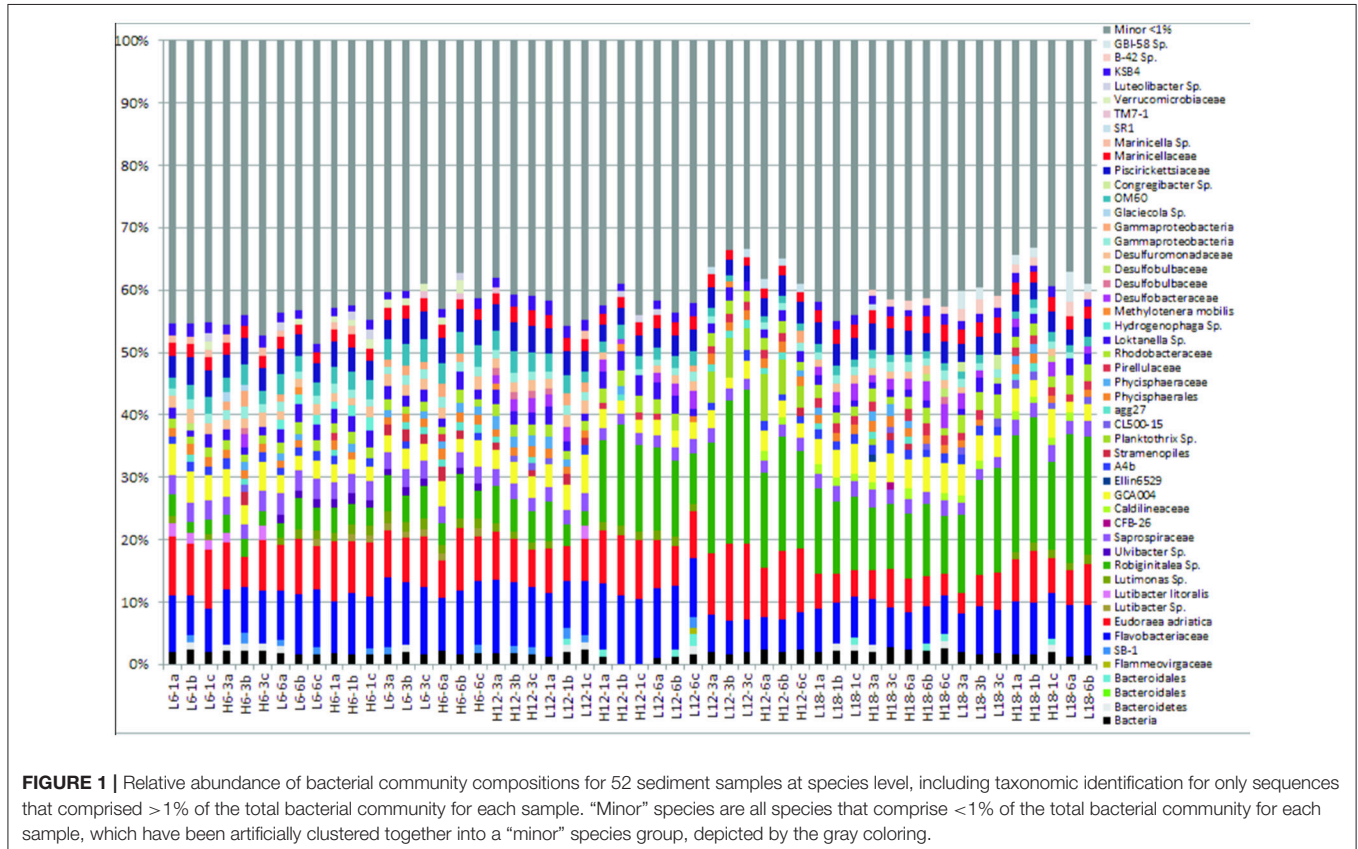
The “minor” species were observed to comprise between 35–45% of the total abundance across all samples and environmental regimes (Figure 1, Figure S2). In contrast, the “major” species dominated relative abundance, ranging from 55 to 75% of relative abundance within each sample (Figure 1). A summary table of all major species (OTUs) listed by taxon and treatment can be found in the Supplementary Information (Table S3).

### Microbial Response to Environmental Variables

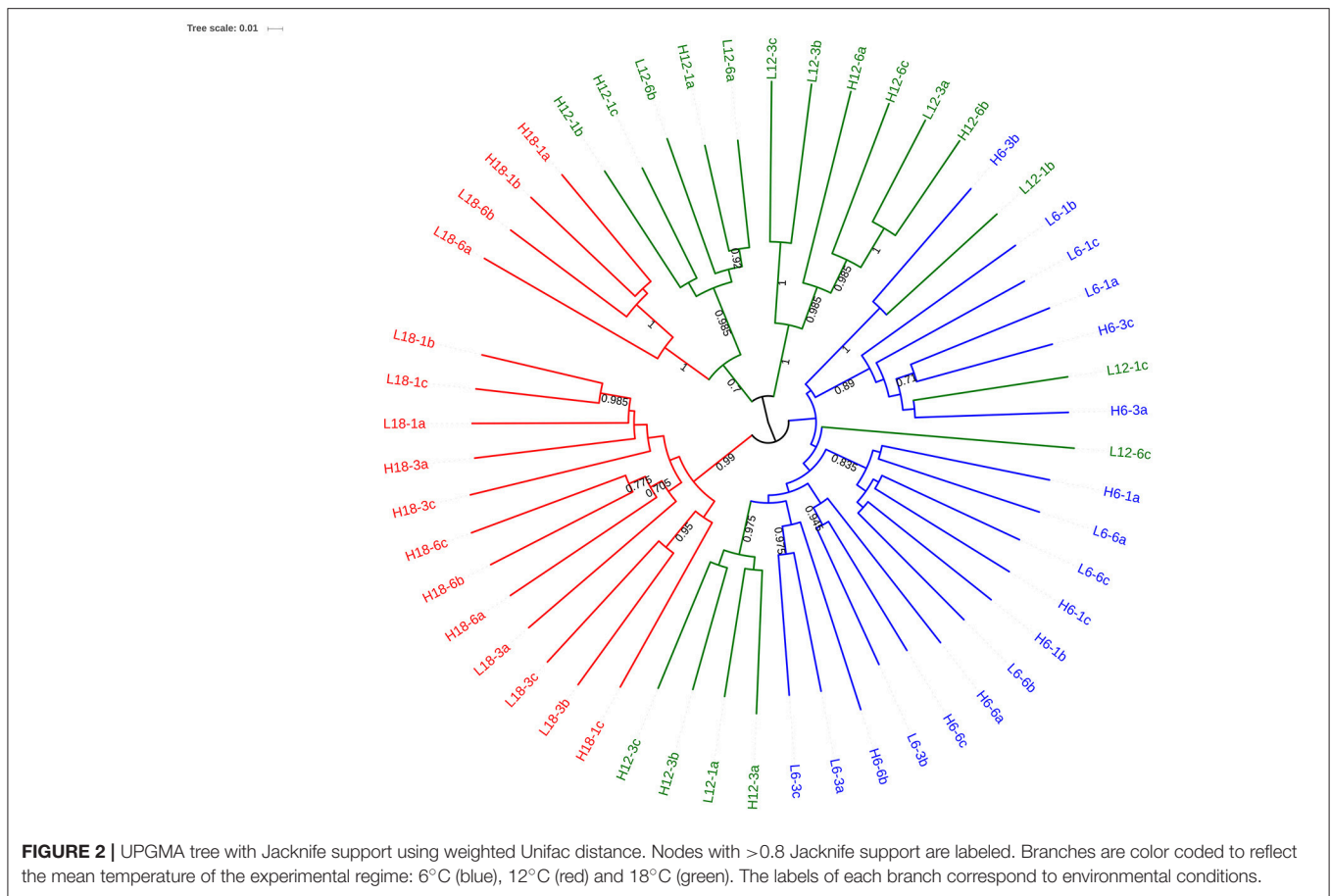
OTU clustering was visualized using an Unweighted Pair Group Method with Arithmetic Mean (UPGMA) tree (Figure 2) with Jackknife support (Sokal and Michener, 1958). The dissimilarity matrix generated for the UniFrac metric (data not shown) was also utilized for non-metric multidimensional scaling (NMDS) analysis to visualize (in plot form) the sequence

data with respect to the environmental variables including; mean temperature (Figure 3), CO<sub>2</sub> treatment and temperature fluctuation (Figure S4). From both the UPGMA tree grouping (Figure 2) and NMDS plots, a strong mean temperature effect on species-level bacterial community composition was observed, as reflected by sample grouping in relation to mean temperature (6, 12, and 18°C). Nutrient concentration for PO<sub>4</sub> and NO<sub>x</sub> was consistently low, but NH<sub>4</sub> varied with mean temperature, not CO<sub>2</sub> or temperature fluctuation (Figure 5). The nutrient concentration data was included for analysis with microbial community assemblages. PO<sub>4</sub> concentration decreased over time, which appears to correspond with a reduction in the abundance of *Gammaproteobacteria* (see section Species-specific microbial responses).

Canonical correspondence analysis (CCA) examined the effect of environmental variables on the bacterial community composition. Using the species (OTU) level bacterial composition (note: the few archaea sequences detected were excluded, the primers chosen target the V4 region of the 16S rRNA gene as bacteria were the focus of this study), mean temperature ( $F = 18.7059$ ,  $p = 0.005$ ), MPB community ( $F = 4.4852$ ,  $p = 0.01$ ) and PO<sub>4</sub> concentration ( $F = 4.0939$ ,  $p = 0.020$ ) was found to significantly influence the species level bacterial community composition (Figure 4). This CCA explained 42% of the variance, and the effects of CO<sub>2</sub> and fluctuating regime were not significant. The variations in ammonium (NH<sub>4</sub>) and nitrate-nitrite (NO<sub>x</sub>) concentrations were also insignificant



**FIGURE 1 |** Relative abundance of bacterial community compositions for 52 sediment samples at species level, including taxonomic identification for only sequences that comprised >1% of the total bacterial community for each sample. “Minor” species are all species that comprise <1% of the total bacterial community for each sample, which have been artificially clustered together into a “minor” species group, depicted by the gray coloring.



( $\text{NH}_4$ :  $F = 1.8149$ ,  $p = 0.01$ ;  $\text{NO}_x$ :  $F = 1.6684$ ,  $p = 0.1$ ) in the CCA. The raw data for each nutrient concentration is presented in boxplots according to treatment, and did not change with mean temperature,  $\text{CO}_2$  or fluctuating regime (**Figure 5**). The CCA was rerun using OTUs which were grouped by either Phyla or Class, based on the lowest resolution by clustering. Although similar trends were observed, the variance explained was lower (39%). Mean temperature was the most significant variable ( $F = 12.7389$ ,  $p = 0.005$ ), followed by  $\text{PO}_4$  concentration ( $F = 4.2576$ ,  $p = 0.01$ ) and MPB biomass ( $F = 4.3762$ ,  $p = 0.03$ ).  $\text{CO}_2$ , fluctuating regime and  $\text{NH}_4$  and  $\text{NO}_x$  concentration were again found to have no significant effect (**Figure 6**).

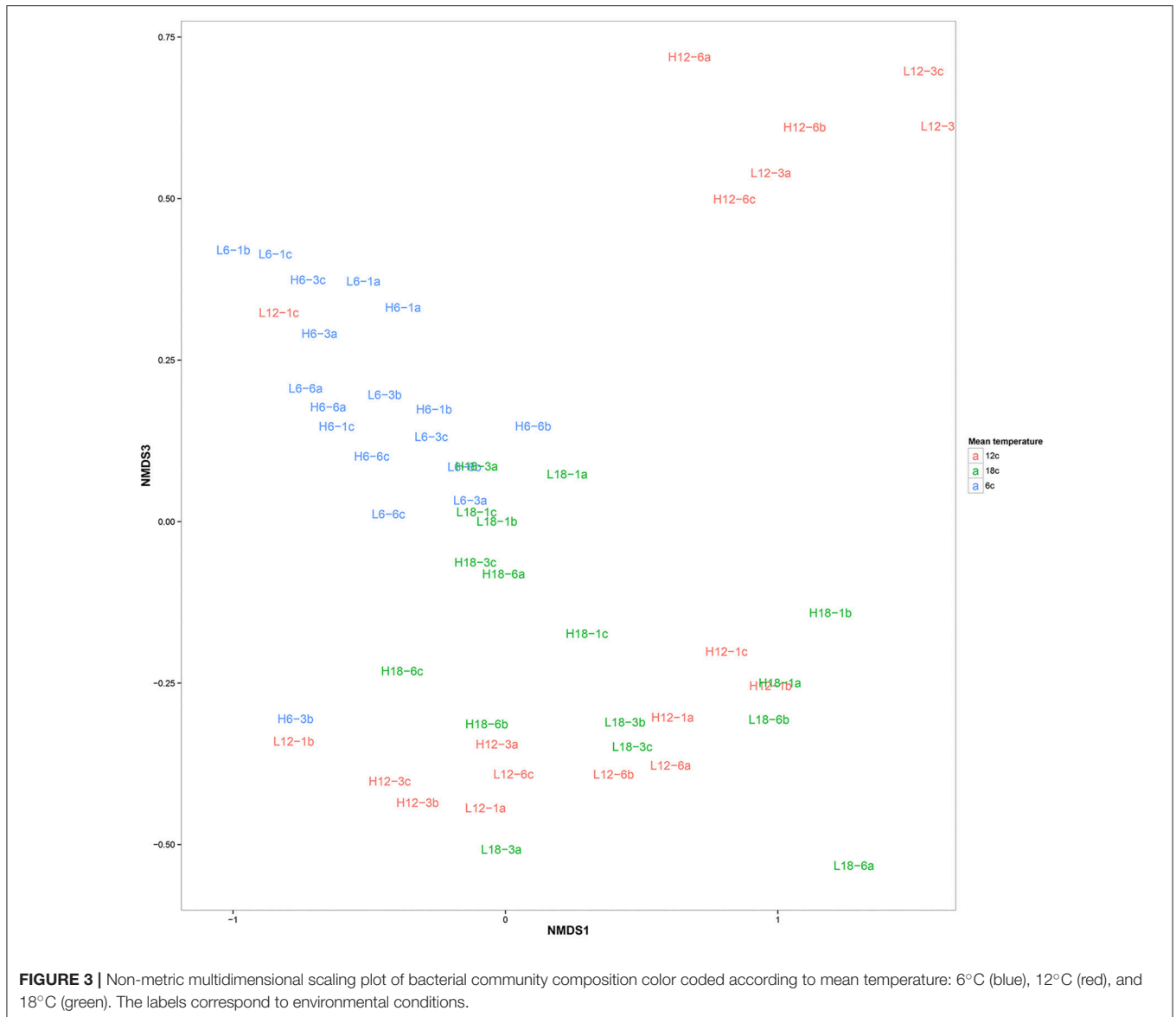
### Species-Specific Microbial Responses

To assess the bacterial species responsible for driving observed changes influenced by mean temperature (**Figures 2–4**), the species level community composition under each of the three experimental temperatures were compared (**Table 2**). Microbial communities were dominated by Bacteroidetes (predominantly the family *Flavobacteriaceae*), with over 50% of total relative abundance attributed to this phylum across all mean temperature treatments, peaking at 59% at 12°C (**Figure 1**, **Table 2**). Although the overall Bacteroidetes relative abundance was fairly constant, the community structure within *Flavobacteria* changed with mean temperature. For example, at genus level *Robiginitalea*

increased in abundance as mean temperature increased, from 7% at 6°C to 20% at 12°C and 23% at 18°C. In contrast, *Lutibacter* species (*L. littoralis* and *Lutibacter* spp.) were both absent at 18°C mean temperature, and *Lutibacter* spp. were only found under the 6°C mean temperature treatments (**Table 2**). *Ulvibacter* sp. was only present at 6°C, and *Eudorea adriatica* declined from 14% relative abundance at 6°C and 12°C to 9% at 18°C.

Proteobacteria was the second most abundant phylum after Bacteroidetes, making up 30% of relative abundance at 6°C, but dropping to 25% at 12°C and 23% at 18°C. The *Gammaproteobacteria* class underpinned the decreasing trend found in the Proteobacteria phylum, decreasing in abundance from 20% at the lowest mean temperature 6°C to 15 and 14% at 12° and 18°C respectively (**Table 2**). *Betaproteobacteria* were present at the lower temperature treatments, but were not found in the highest mean temperature treatment (18°C). In contrast, *Alphaproteobacteria* remained relatively constant (~6%) across all treatments, and *Deltaproteobacteria* increased in abundance with increasing mean temperature, so although the overall phylum abundance decreased, this observation masked changes in the lower taxonomic levels.

The phylum Planctomycetes was present in all samples, with an average constant abundance of ~5% which increased slightly as mean temperature increased (**Figure 1**, **Table 2**). However, as observed with *Flavobacteria*, the overall abundance masks

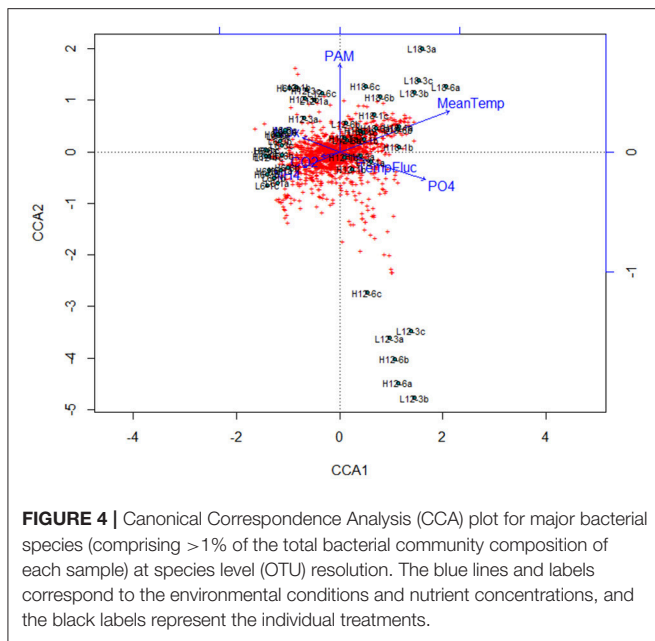


individual species level dynamics, with *Phycisphaerae* (~2%) and *Phycisphaerales* (~1%) dominating the lower temperature regimes within this phylum. However, as mean temperature increases, the relative abundance of *Pirellulaceae* increases, rising from 0.2% at 6°C to 2% at 18°C. In general, Cyanobacteria abundance was low in all samples; with *Cyanobacteria* sp. found at all mean temperatures. As observed for other phyla, this general trend was underpinned by specific species dynamics. At a mean temperature of 12°C (specifically L12-3 and H12-6, **Figure 1**), there was a large relative abundance (up to 12%) of the cyanobacterium *Planktothrix*, which was only found in one other treatment (H18-3a). This was also reflected where samples with *Planktothrix* at the mean temperature of 12°C were clustered together (**Figure 3**). *Verrucomicrobia* showed distinct temperature response dynamics, decreasing in abundance as mean temperature increases, with no *Verrucomicrobia* present

at 18°C. In contrast, thermophilic bacteria from the phylum *Deinococcus-Thermus* were found only in the highest mean temperature regime (**Table 2**).

## DISCUSSION

There is clear evidence of environmental change affecting species distributions and abundances, and this changing biodiversity has been well studied in benthic systems, through a variety of manipulative experiments and observational studies (Ieno et al., 2006; Prosser et al., 2007; Bulling et al., 2010; Hicks et al., 2011; Gilbertson et al., 2012; Godbold and Solan, 2013). However, most of these studies focus on macrofaunal diversity, although it is the microbial assemblages in these habitats that drive biogeochemical cycling (Middelburg, 2011; Mayor et al.,



2012). Studies that examine shifts in microbial communities in relation to environmental changes have tended to focus on only one environmental variable, such as CO<sub>2</sub> gradients (Kerfahi et al., 2014; Tait et al., 2015) and the impact on relative class or order level abundance (Tait et al., 2013, 2015); or targeting specific genes, for their biogeochemical properties (Kitidis et al., 2017). This study generated over 11 million sequences, with taxonomic identification achievable at species level (97% sequence identity). The number of OTUs found through NGS was much higher than numbers found using T-RFLP, ARISA, or DGGE (Massé et al., 2016), and provided greater resolution on species level changes that may be masked in studies that sequence to class/order, or only provide information on overall bacterial biomass (Mayor et al., 2013; Main et al., 2015). The comparison of different resolution (class/order analysis compared to species level analysis) showed the same trends, but a lower species resolution may not only mask species level changes, but also miss interactions between environmental variables. In future, it would be interesting to compare the results observed with direct sequencing of rRNA as it has been shown to eliminate uncertainties associated with primer matching on the rDNA and therefore producing a more robust assessment of bacterial populations (Rosselli et al., 2016).

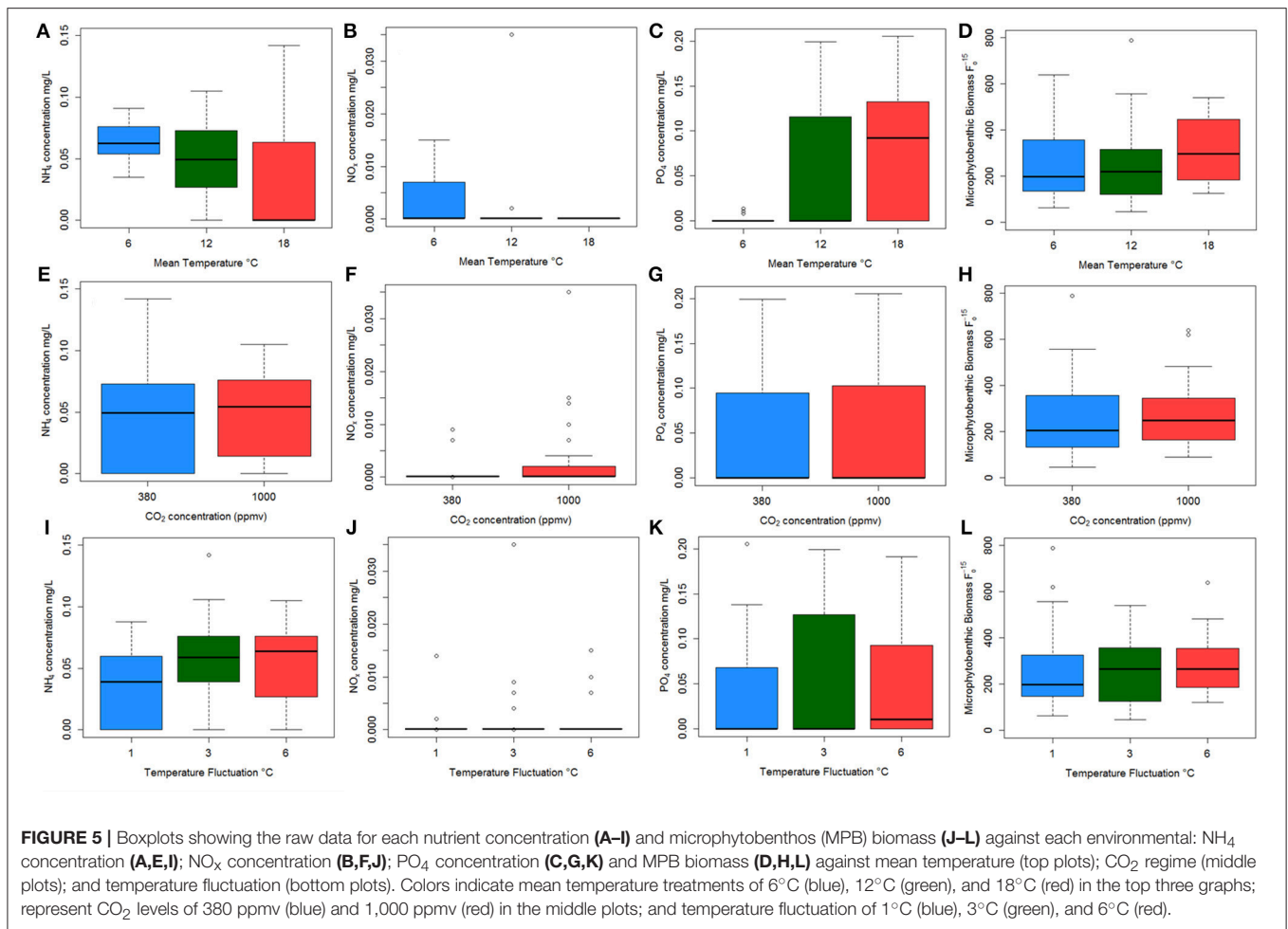
Benthic microbes play a vital role in sediment biogeochemistry (Bertics and Ziebis, 2009), and their contribution to ecosystem function is determined by community assemblage (Petchey and Gaston, 2006; Beveridge et al., 2010). This study supports previous research on coastal sediments, which has shown that Proteobacteria (alpha, beta, delta, and gamma), Bacteroidetes, and Planctomycetes dominate relative abundance (Musat et al., 2006; Laverock et al., 2010; Gobet et al., 2012; Tait et al., 2015). Overall relative abundance did not change at class or order level in response to changes in CO<sub>2</sub>, as seen in

previous manipulative research (Tait et al., 2013, 2015), although microbial community changes have been found along a natural CO<sub>2</sub> gradient in the Mediterranean (Kerfahi et al., 2014). This study found that changes in mean temperature, not CO<sub>2</sub>, have a significant effect on shifts in microbial community assemblage, and the contribution of certain taxa to specific ecosystem services (such as nutrient cycling) may be altered with environmental change, particularly with warming temperature (Bertics and Ziebis, 2009). Results indicate that this varies between orders and classes, with some remaining constant in relative abundance (e.g., *Flavobacteria*), supporting previous work (Musat et al., 2006; Laverock et al., 2010; Gobet et al., 2012), and others such as the Proteobacteria changing in abundance with increased mean temperature. However, this study illustrates the apparent constant abundance may conceal changes in community structure at genus or species taxonomic levels as a result of the level of detail provided by next generation sequencing.

Microbial communities play a vital role in benthic carbon cycling and are often the primary degraders of organic matter when it reaches the sediment surface. Bacteroidetes are important for initial organic matter degradation, often breaking down complex polymeric substances (Teeling et al., 2012; McKew et al., 2013; Taylor et al., 2013; Decleyre et al., 2015). The microphytobenthic (MPB)-rich sediment used in this study are typical of tidal mudflats, and the extracellular polymeric substances excreted by MPB provide a labile carbon source for heterotrophic microorganisms (McKew et al., 2013; Taylor et al., 2013; Decleyre et al., 2015; Bohorquez et al., 2017). Bacteroidetes are the dominant phylum here, in particular *Flavobacteria* (which make up 80% of the Bacteroidetes abundance), and together with Planctomycetes, they play a vital role in benthic carbon cycling as the initial organic matter degraders (McKew et al., 2013; Taylor et al., 2013; Bohorquez et al., 2017). Despite the changing environmental conditions, their relatively constant abundance suggests the initial degradation of carbon remains unaffected by temperature changes, perhaps unsurprising as many tidal benthic species are facultative anaerobes (McKew et al., 2013). Although the relative abundance of the *Flavobacteria* remains constant, there are changes in the community structure with increasing temperature, such as an increase in *Robiginitalea* as mean temperature increases (which corresponds to an increase in PO<sub>4</sub>), and a corresponding decrease in *Eudoraea adriatica* and *Lutibacter* species (*L. littoralis* is only found at 6°C mean temperature treatment). Species within the *Robiginitalea* genus are known to have a thermal preference above 10–15°C (Cho and Giovannoni, 2004; Manh et al., 2008), which may explain why they increase from 7% at 6°C mean temperature to 23% at 18°C, thus maintaining the overall constant relative abundance of the *Flavobacteriaceae* family as the *Lutibacter* and *Eudoraea* species decline with rising mean temperature. This maintains the functionality of this group as primary carbon degraders, although the species within the family that carry out this process have shifted with increasing temperature, suggesting some redundancy within the *Flavobacteria*.

In the dominant phylum Bacteroidetes, a decrease in the *Saprospiraceae* family was observed with increasing mean temperature, which has implications for the carbon cycle, as they

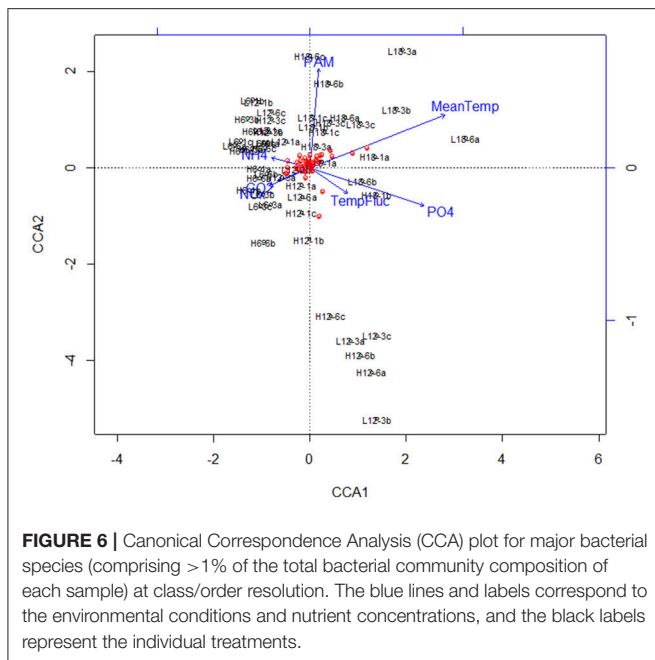




are dominant in coastal zones and play an important role in remineralisation of organic matter (Raulf et al., 2015). Previous studies have suggested that *Saprosiraceae* strains are sensitive to environmental changes, although in this study a temperature effect was demonstrated, not a shift due to elevated CO<sub>2</sub> (Raulf et al., 2015).

It is also possible that these species level changes may cause a shift in the function or capability within a bacterial class or order, although the overall abundance of a class may remain constant, as found for the *Flavobacteria* (Table 2). The change in nutrient concentration for (decreasing) ammonia (NH<sub>4</sub>) and (increasing) phosphate (PO<sub>4</sub>) with increasing mean temperature support this concept. Here we demonstrate an increase in sulfate reducing bacteria (*Deltaproteobacteria*) as mean temperature increases, and the presence of thermophilic bacteria (*Deinococcus-Thermus*) at the highest mean temperature treatment (18°C). Sulfate reducing bacteria (SRB) are often found in cohesive sediments (Ravenschlag et al., 2000), such as the intertidal muddy sediment used in this study, due to the steep redox gradients determined by the permeability and oxygen penetration depth (Probandt et al., 2017). Sulfate reducers are associated with anoxic sediment (Orcutt et al., 2011), and the

increase in SRB abundance with increasing temperature may also be indicative of lower oxygen concentrations with the warming regimes, driving the redox layer toward the sediment surface and promoting formation of anoxic “hotspots” within the sediment, stimulating sulfate reduction (Mahmoudi et al., 2015). There were clear visual differences in the highest mean temperature treatments, with the sediment profile in the mesocosms turning from an oxidic brown color to black, suggesting the redox layer has shifted closer to the sediment surface, supporting sulfate reducing conditions. As strict anaerobes, *Desulfobacteraceae* remineralise organic matter in the absence of oxygen (Probandt et al., 2017), and are often found in fine impermeable sediments which promote the development of anoxic niches within the surface sediments, enhanced by the higher mean temperature in this study. A corresponding increase in the abundance of extremophilic species (*Deinococcus-Thermus* phylum), typically found in harsh environments such as deserts and hot springs (Albuquerque et al., 2005; Pikuta et al., 2007), was also measured in the highest mean temperature regime. This demonstrates the shifting regime in the benthic microbial community at a genus and species level, and the consequent shift from aerobic processes to favoring anaerobic processes in the sediment surface.



**FIGURE 6 |** Canonical Correspondence Analysis (CCA) plot for major bacterial species (comprising >1% of the total bacterial community composition of each sample) at class/order resolution. The blue lines and labels correspond to the environmental conditions and nutrient concentrations, and the black labels represent the individual treatments.

Previous work has demonstrated that stable environmental conditions promotes constant and specific microbial communities (Bertics and Ziebis, 2009), but it is unclear how quickly these communities may respond to change. The interpretation of change in microbial communities is dependent on the depth of diversity measured (e.g., down to genus or species level or identifying classes or orders). However, while species turnover may be obvious when using the higher taxonomic resolution, lack of turnover does not necessarily result in static functionality. Freshwater microbial communities are often characterized by their metabolic plasticity in response to environmental change, which contributes to their functional redundancy and links their assemblage composition with ecosystem function (Comte et al., 2013). In the present study we demonstrate a clear response in the marine benthic microbial community to different mean temperature treatments that would have been overlooked using poorer taxonomic resolution. This changing community reflected a change in nutrient concentrations as mean temperature increased, thus suggesting there is no functional redundancy among the different species which provides resilience to environmental change (Muntadas et al., 2016). However, in terms of carbon cycling, there is a shift in the community assemblage within the *Flavobacteria*, the relative abundance remains constant, suggesting some functional redundancy with organic matter degradation. Much of the nitrogen cycle is driven by archaea (Raulf et al., 2015), such as ammonia-oxidizing archaea (AOA), which were not measured in this study due to the bacterial specific primers used. However, ammonia oxidizing bacteria (AOB), predominantly affiliated with Betaproteobacteria ( $\beta$ -AOB) (Bernhard et al., 2005), play a significant role in nitrogen cycling (Risgaard-Petersen et al., 2004), and can outnumber AOA in coastal sediments (Santoro et al., 2008). In this study, increasing mean

temperature led to a decrease in Betaproteobacteria abundance, with no Betaproteobacteria present at the highest mean temperature. Although ammonia oxidisers were identified (both *Nitrosomonas* and *Nitrospora*) within the Betaproteobacteria, their abundance was less than 1% across all treatments. The corresponding decrease in  $\text{NH}_4$  concentration in the overlying water suggests there may be changes in the nitrogen cycling, possibly influenced by the absence of Betaproteobacteria, and  $\text{NO}_x$  levels remain low across all treatments (Table 2). The phosphate increase could be linked to the corresponding decrease in abundance of Gammaproteobacteria, which are instrumental in phosphorous cycling (Sebastian and Gasol, 2013) and are usually limited by phosphate availability, and there is a corresponding increase in the abundance of *Robiginitalea*. The decrease in Gammaproteobacteria means the uptake of phosphate from the overlying water column is reduced, leading to the rising concentrations with rising temperature, directly impacting the phosphorous cycling in this benthic system. In addition, changes in the redox layer in the surface sediment will release iron-bound phosphorous under anoxic conditions (Sinkko et al., 2011), enhancing overall phosphorous flux from the sediment into the water. Ammonium and phosphate are typically the preferred nutrients for microbial communities, and the consistently low nitrate (and nitrite) concentrations in this study are typical of coastal oligotrophic systems (Chen et al., 2017). The change in  $\text{NH}_4$  concentration may be a result of a combination of low abundance of ammonia oxidizer bacteria, reduced microphytobenthos activity or a higher rate of microbial community mineralisation with increasing mean temperature.

In conclusion, changes in microbial assemblage were only found between the mean temperature treatment, and not in response to changes in diurnal temperature variability or elevated  $\text{CO}_2$ . This supports recent research that has shown seasonal changes mask any response to elevated  $\text{CO}_2$  within the environment (Tait et al., 2013, 2015; Currie et al., 2017; Hicks et al., 2017b). However, some of the changes at species level, such as increasing abundance of sulfate reducing bacteria (*Desulfobacteraceae*) and corresponding decrease of *Desulfuromonadaceae* with increasing mean temperature, suggest that changes to the sulfur cycle may not be noticed at the ecosystem service level, despite a change in species assemblage. Targeted future work should address how changes in some species (e.g., increase of thermophilic species in the *Deinococcus-Thermus* phylum) may be reflected in a broad range of biogeochemical processes, such as integrating measurements relating to sulfur, nitrogen and carbon cycles. Sediment profiles of oxygen and  $\text{H}_2\text{S}$  would provide insight into potential shifting from oxic to anoxic (sulfate reduction) conditions, and this linked to corresponding microbial communities would provide direct biogeochemical information on coastal sediment dynamics. This study has focused on intertidal cohesive sediments, but the microbial response will vary with sediment type, driven by changes in oxygen penetration depth (Hicks et al., 2017a). The depth of taxonomic resolution provided by NGS provides additional information at a genus or species level, allowing identification of species regime shifts that may directly impact biogeochemistry, which may be missed using a lower

**TABLE 2 |** Changes in abundance at class, order and family level under the key phyla in the “major species” group, classified to the lowest taxonomic level, under each mean temperature regime.

Phylum	Class	Order	Family	Genus	Species	Average strains (% relative abundance)		
						6°C	12°C	18°C
Planctomycetes	-	-	-	-	-	4,965 (4.4%)	9,456 (4.7%)	7,432 (6.5%)
	Phycisphaerae	Phycisphaerales	-	-	-	2,487 (2.1%)	2,220 (1.7%)	2,683 (2%)
	Phycisphaerae	Phycisphaerales	Phycisphaeraeae	-	-	1,243 (1.1%)	1,466 (1%)	1,044 (0.8%)
	Planctomyceita	Planctomyceitales	Pirellulales	-	-	237 (0.2%)	1,111 (0.8%)	2,918 (2%)
Bacteroidetes	-	-	-	-	-	5,7749 (51%)	7,4825 (59%)	75,165 (53%)
	Flavobacteria	Flavobacteriales	Flavobacteriaceae	-	-	46,500 (41%)	64,482 (50%)	66,365 (45%)
	-	-	-	Robignitalea	-	7,334 (7%)	25,602 (20%)	35,071 (23%)
	-	-	-	Lutimonas	-	2,166 (1.9%)	1,691 (1.3%)	1,012 (0.7%)
	-	-	-	Lutibacter (excl. litoralis)	-	1,002 (0.9%)	0 (0%)	0 (0%)
	-	-	-	Lutibacter	<i>litoralis</i>	1,053 (0.9%)	230 (0.2%)	0 (0%)
	-	-	-	Eudoreae	<i>adriatica</i>	1,5723 (14%)	18,087 (14%)	12,902 (9%)
	-	-	-	Ulvibacter	-	1,429 (1.3%)	0 (0%)	0 (0%)
	Sphingobacteria	Sphingobacteriales	Saprospiraceae	-	-	5856 (5.2%)	4697 (3.6%)	5516 (3.9%)
	Cyanobacteria	-	-	-	-	7290 (7.1%)	802 (3.3%)	246 (0.3%)
Proteobacteria	Oscillatorophycidaea	Oscillatoriales	Phormidiaceae	Planktothrix	-	0 (0%)	3 (2.7%)	0.1 (0.1%)
	Alphaproteobacteria	-	-	-	-	34,331 (30.5%)	33,108 (25.3%)	33,651 (23.4%)
	Alphaproteobacteria	Rhodobacterales	Rhodobacteraceae	-	-	6,874 (6.2%)	8,672 (6.6%)	8,700 (5.8%)
	-	-	-	Loktanela	-	3,056 (2.7%)	4,113 (3.1%)	5,272 (3.5%)
	Betaproteobacteria	Burkholderiales	Comamonadaceae	Hydrogenophaga	-	3,818 (3.5%)	4,559 (3.5%)	3,428 (2.3%)
	Betaproteobacteria	Methyloliphiales	Methyloliphaceae	Methylotenera	<i>mobilis</i>	1,084 (1%)	456 (0.3%)	0 (0%)
	-	-	-	-	-	970 (0.9%)	0 (0%)	0 (0%)
	Deltaproteobacteria	-	-	-	-	115 (0.1%)	456 (0.3%)	0 (0%)
	-	Desulfobacteriales	Desulfobacteraceae	Desulfobacteraceae	-	3,829 (3.3%)	4,862 (3.6%)	5,751 (4.1%)
	-	Desulfobacteriales	Desulfobulbaceae	Desulfobulbaceae	-	290 (0.2%)	2,262 (1.7%)	3,350 (2.4%)
Gammaproteobacteria	-	Desulfuromonadales	Desulfuromonadaceae	Desulfuromonadaceae	-	136 (0.1%)	603 (0.4%)	163 (0.1%)
	-	-	-	-	-	114 (0.1%)	0 (0%)	670 (0.4%)
	-	-	-	-	-	3,288 (2.9%)	1,997 (1.5%)	1,570 (1.2%)
	-	-	-	-	-	22543 (20%)	19119 (15%)	19200 (14%)
	Other	-	-	-	-	3,040 (3.7%)	4,373 (2.4%)	3,029 (2.1%)
	Alteromonadales	Alteromonadales	OM60	-	-	5,562 (5.01%)	4,373 (3.3%)	2,800 (2%)
	Alteromonadales	Alteromonadales	OM60	Congregibacter	-	0 (0%)	0 (0%)	539 (0.4%)
	Thiotrichales	Thiotrichales	Piscirickettsiaceae	-	-	7,585 (6.7%)	7,408 (5.6%)	7,691 (5.5%)
	Marinicellales	Marinicellales	Marinicellaceae	-	-	3,960 (3.5%)	4,166 (3.2%)	5,141 (3.6%)
	Marinicellales	Marinicellales	Marinicellaceae	Marinicella	-	1,059 (1%)	132 (0.1%)	0 (0%)
Deinococcales	Deinococcales	Trueperaceae	-	-	0 (0%)	0 (0%)	5,895 (3.2%)	
Deinococcus-Thermus	Deinococcales	Deinococcales	Trueperaceae	B-42	-	0 (0%)	0 (0%)	2,990 (1.9%)
	Deinococcales	Deinococcales	Trueperaceae	GBI-58	-	0 (0%)	0 (0%)	2,905 (1.3%)
	-	-	-	-	-	1,995 (1.8%)	371 (0.3%)	0 (0%)
Verrucomicrobia	Verrucomicrobiales	Verrucomicrobiales	Verrucomicrobiaceae	-	-	1,335 (1.2%)	0 (0%)	0 (0%)
	Verrucomicrobiales	Verrucomicrobiales	Verrucomicrobiaceae	Luteolibacter	-	660 (0.6%)	371 (0.3%)	0 (0%)

The values represent the total number of OTUs across all replicates (n = 3), with % relative abundance in brackets. Values in italics and underlined represent the total values for each phylum.

taxonomic resolution technique. High taxonomic resolution is useful for identifying species shifts and measuring potential functional redundancy for key biogeochemical processes, such as carbon mineralization and nutrient cycling. Since benthic systems provide a variety of ecosystem services (Duffy and Stachowicz, 2006; Frid and Caswell, 2016) which are often driven by microbial activity, these results suggest some vulnerability (nutrients), and highlights potential functional redundancy (carbon), in benthic microbial communities as a response to climate changes. Importantly, elevated CO<sub>2</sub> does not appear to have any effect on microbial assemblage, based on the results discussed here, although changing mean temperature (and not variability) appears to drive community assemblage change. Whilst there are limitations in realistically interpreting results from artificial mesocosm systems, and caution must be taken in interpreting responses, these experiments are valuable in providing insights on how complex ecosystems may respond to warming or elevated CO<sub>2</sub> (Benton et al., 2007; Cartaxana et al., 2015). This has implications for environmental change research, particularly in coastal habitats where much of the ecosystem services are generated through microbial interactions that occur in the benthos. Changes to nutrient cycling (such as the availability of nitrogen or phosphate) could promote eutrophication or decrease phytoplankton primary production (Vitousek et al., 1997), directly impacting food webs and indirectly affecting benthic carbon mineralization and sequestration. Integrating next generation sequencing with robust biogeochemical parameters is key in understanding the potential consequences of environmental change in coastal habitats.

## AUTHOR CONTRIBUTIONS

NH and DP conceived and designed the experiments. NH ran the experiments and collected the samples. NH and KD

performed DNA extraction using a protocol developed. KD, XL, RG, JK, AL, and LL ran the bioinformatics, including sampling, quality control, data processing and sequence assignment. XL performed additional analysis on genomic results. NH, KD, and DP wrote the manuscript, with input from all co-authors.

## FUNDING

The authors would like to acknowledge funding from the Natural Environmental Research Council (NERC) grant NE/E006795/1 and the Pilot Competition grant number NBAF908 NBAF-L. PCR amplification, sequencing and taxonomic analysis was carried out at the NERC Biomolecular Analysis Facility (NBAF), Liverpool, UK. This work received funding from the MASTS pooling initiative (The Marine Alliance for Science and Technology for Scotland) and their support is gratefully acknowledged. MASTS is funded by the Scottish Funding Council (grant reference HR09011) and contributing institutions.

## ACKNOWLEDGMENTS

The authors thank Irvine Davidson at Sediment Ecology Research Group, and Mark Bulling at University of Derby, for their contribution to fieldwork and sampling. The authors acknowledge Gavin Campbell at NBAF for providing laboratory analysis to allow samples to be sequenced.

## SUPPLEMENTARY MATERIAL

The Supplementary Material for this article can be found online at: <https://www.frontiersin.org/articles/10.3389/fmicb.2018.01730/full#supplementary-material>

## REFERENCES

- Albuquerque, L., Simoes, C., Nobre, M. F., Pino, N. M., Battista, J. R., Silva, M. T., et al. (2005). *Truepera radiovictrix* gen. nov., sp. nov., a new radiation resistant species and the proposal of *Trueperaceae* fam. nov. *FEMS Microbiol. Lett.* 247, 161–169. doi: 10.1016/j.femsle.2005.05.002
- Aldridge, J. N., Lessin, G., Amoudry, L. O., Hicks, N., Hull, T., Klar, J. K., et al. (2017). Comparing benthic biogeochemistry at a sandy and a muddy site in the Celtic Sea using a model and observations. *Biogeochemistry* 135, 155–182. doi: 10.1007/s10533-017-0367-0
- Alsterberg, C., Hulth, S., and Sundbäck, K. (2011). Response of a shallow-water sediment system to warming. *Limnol. Oceanogr.* 56, 2147–2160. doi: 10.4319/lo.2011.56.6.2147
- Beaumont, N. J., Austen, M. C., Atkins, J. P., Burdon, D., Degraer, S., Dentinho, T. P., et al. (2007). Identification, definition and quantification of goods and services provided by marine biodiversity: implications for the ecosystem approach. *Mar. Pollut. Bull.* 54, 253–265. doi: 10.1016/j.marpolbul.2006.12.003
- Bell, T., Newman, J. A., Silverman, B. W., Turner, S. L., and Lilley, A. K. (2005). The contribution of species richness and composition to bacterial services. *Nature* 436, 1157–1160. doi: 10.1038/nature03891
- Benedetti-Cecchi, L., Bertocci, I., Vaselli, S., and Maggi, E. (2006). Temporal variance reverses the impact of high mean intensity of stress in climate change experiments. *Ecology* 87, 2489–2499. doi: 10.1890/0012-9658(2006)87[2489:IVrtio]2.0.CO;2
- Benton, T. G., Solan, M., Travis, J. M., and Sait, S. M. (2007). Microcosm experiments can inform global ecological problems. *Trends Ecol. Evol.* 22, 516–521. doi: 10.1016/j.tree.2007.08.003
- Bernhard, A. E., Donn, T., Giblin, A. E., and Stahl, D. A. (2005). Loss of diversity of ammonia-oxidizing bacteria correlates with increasing salinity in an estuary system. *Environ. Microbiol.* 7, 1289–1297. doi: 10.1111/j.1462-2920.2005.00808.x
- Bertics, V. J., and Ziebis, W. (2009). Biodiversity of benthic microbial communities in bioturbated coastal sediments is controlled by geochemical microniches. *ISME J.* 3, 1269–1285. doi: 10.1038/ismej.2009.62
- Beveridge, O. S., Petchey, O. L., and Humphries, S. (2010). Direct and indirect effects of temperature on the population dynamics and ecosystem functioning of aquatic microbial ecosystems. *J. Anim. Ecol.* 79, 1324–1331. doi: 10.1111/j.1365-2656.2010.01741.x
- Bohorquez, J., McGenity, T. J., Papaspyrou, S., Garcia-Robledo, E., Corzo, A., and Underwood, G. J. (2017). Different types of diatom-derived extracellular polymeric substances drive changes in heterotrophic bacterial communities from intertidal sediments. *Front. Microbiol.* 8:245. doi: 10.3389/fmicb.2017.00245



- Bolhuis, H., Fillinger, L., and Stal, L. J. (2013). Coastal microbial mat diversity along a natural salinity gradient. *PLoS ONE* 8:63166. doi: 10.1371/journal.pone.0063166
- Bulling, M. T., Hicks, N., Murray, L., Paterson, D. M., Raffaelli, D., White, P. C., et al. (2010). Marine biodiversity-ecosystem functions under uncertain environmental futures. *Philos. Trans. R. Soc. Lond. B. Biol. Sci.* 365, 2107–2116. doi: 10.1098/rstb.2010.0022
- Caldeira, K., and Wickett, M. E. (2003). Anthropogenic carbon and ocean pH. *Nature* 425, 365–366. doi: 10.1038/425365a
- Caporaso, J. G., Kuczynski, J., Stombaugh, J., Bittinger, K., Bushman, F. D., Costello, E. K., et al. (2010). QIIME allows analysis of high-throughput community sequencing data. *Nat. Methods* 7, 335–336. doi: 10.1038/nmeth.f.303
- Caporaso, J. G., Lauber, C. L., Walters, W. A., Berg-Lyons, D., Lozupone, C. A., Turnbaugh, P. J., et al. (2011). Global patterns of 16S rRNA diversity at a depth of millions of sequences per sample. *Proc. Natl. Acad. Sci. U.S.A.* 108, 4516–4522. doi: 10.1073/pnas.1000080107
- Cartaxana, P., Vieira, S., Ribeiro, L., Rocha, R. J., Cruz, S., Calado, R., et al. (2015). Effects of elevated temperature and CO on intertidal microphytobenthos. *BMC Ecol.* 15:10. doi: 10.1186/s12898-015-0043-y
- Chao, A. (1984). Nonparametric-estimation of the number of classes in a population *scandinavian. J. Stat.* 11, 265–270.
- Chao, A., and Lee, S. M. (1992). Estimating the number of classes via sample coverage. *J. Am. Stat. Assoc.* 87, 210–217.
- Chen, J., Hanke, A., Tegetmeyer, H. E., Kattelman, I., Sharma, R., Hamann, E., et al. (2017). Impacts of chemical gradients on microbial community structure. *ISME J.* 11, 920–931. doi: 10.1038/ismej.2016.175
- Cho, J. C., and Giovannoni, S. J. (2004). *Robiginitalea biformata* gen. nov., sp. nov., a novel marine bacterium in the family Flavobacteriaceae with a higher G+C content. *Int. J. Syst. Evol. Microbiol.* 54(Pt 4), 1101–1106. doi: 10.1099/ijs.0.03023-0
- Colwell, R. K., and Coddington, J. A. (1994). Estimating terrestrial biodiversity through extrapolation. *Philos. Trans. R. Soc. Lond. B Biol. Sci.* 345, 101–118.
- Comte, J., Fauteux, L., and Del Giorgio, P. A. (2013). Links between metabolic plasticity and functional redundancy in freshwater bacterioplankton communities. *Front. Microbiol.* 4:112. doi: 10.3389/fmicb.2013.00112
- Consalvey, M., Perkins, R. G., Paterson, D. M., and Underwood, G. J. C. (2005). PAM fluorescence: a beginners guide for benthic diatoms. *Diatom Res.* 20, 1–22. doi: 10.1080/0269249X.2005.9705619
- Crain, C. M., Kroeker, K., and Halpern, B. S. (2008). Interactive and cumulative effects of multiple human stressors in marine systems. *Ecol. Lett.* 11, 1304–1315. doi: 10.1111/j.1461-0248.2008.01253.x
- Currie, A. R., Tait, K., Parry, H., de Francisco-Mora, B., Hicks, N., Osborn, A. M., et al. (2017). Marine microbial gene abundance and community composition in response to ocean acidification and elevated temperature in two contrasting coastal marine sediments. *Front. Microbiol.* 8:1599. doi: 10.3389/fmicb.2017.01599
- D'Amore, R., Ijaz, U. Z., Schirmer, M., Kenny, J. G., Gregory, R., Darby, A. C., et al. (2016). A comprehensive benchmarking study of protocols and sequencing platforms for 16S rRNA community profiling. *BMC Genomics* 17:55. doi: 10.1186/s12864-015-2194-9
- Decluyre, H., Heylen, K., Sabbe, K., Tytgat, B., Deforce, D., Van Nieuwerburgh, F., et al. (2015). A doubling of microphytobenthos biomass coincides with a tenfold increase in denitrifier and total bacterial abundances in intertidal sediments of a temperate estuary. *PLoS ONE* 10:e0126583. doi: 10.1371/journal.pone.0126583
- Doney, S. C., Fabry, V. J., Feely, R. A., and Kleypas, J. A. (2009). Ocean acidification: the other CO<sub>2</sub> problem. *Annu. Rev. Mar. Sci.* 1, 169–192. doi: 10.1146/annurev.marine.010908.163834
- Dossena, M., Yvon-Durocher, G., Grey, J., Montoya, J. M., Perkins, D. M., Trimmer, M., et al. (2012). Warming alters community size structure and ecosystem functioning. *Proc. Biol. Sci.* 279, 3011–3019. doi: 10.1098/rspb.2012.0394
- Duffy, J. E., and Stachowicz, J. J. (2006). Why biodiversity is important to oceanography: potential roles of genetic, species, and trophic diversity in pelagic ecosystem processes. *Mar. Ecol. Prog. Ser.* 311, 179–189. doi: 10.3354/meps311179
- Duncan, K., Haltli, B., Gill, K. A., and Kerr, R. G. (2014). Bioprospecting from marine sediments of new brunswick, canada: exploring the relationship between total bacterial diversity and actinobacteria diversity. *Mar. Drugs* 12, 899–925. doi: 10.3390/md12020899
- Duncan, K. R., Haltli, B., Gill, K. A., Correa, H., Berru e, F., and Kerr, R. G. (2015). Exploring the diversity and metabolic potential of actinomycetes from temperate marine sediments from Newfoundland, Canada. *J. Indus. Microbiol. Biotechnol.* 42, 57–72. doi: 10.1007/s10295-014-1529-x
- Dyksma, S., Bischof, K., Fuchs, B. M., Hoffmann, K., Meier, D., Meyerdierks, A., et al. (2016). Ubiquitous Gammaproteobacteria dominate dark carbon fixation in coastal sediments. *ISME J.* 10, 1939–1953. doi: 10.1038/ismej.2015.257
- Faith, D. P. (1992). Conservation evaluation and phylogenetic diversity. *Biol. Conserv.* 61, 1–10.
- Febria, C. M., Beddoes, P., Fulthorpe, R. R., and Williams, D. D. (2012). Bacterial community dynamics in the hyporheic zone of an intermittent stream. *ISME J.* 6, 1078–1088. doi: 10.1038/ismej.2011.173
- Findlay, R. H., and Watling, L. (1998). Seasonal variation in the structure of a marine benthic microbial community. *Microb. Ecol.* 36, 23–30.
- Frid, C. L. J., and Caswell, B. A. (2016). Does ecological redundancy maintain functioning of marine benthos on centennial to millennial time scales? *Mar. Ecol.* 37, 392–410. doi: 10.1111/maec.12297
- Fu, F.-X., Warner, M. E., Zhang, Y., Feng, Y., and Hutchins, D. A. (2007). Effects of increased temperature and CO<sub>2</sub> on photosynthesis, growth, and elemental ratios in marine synechococcus and prochlorococcus (Cyanobacteria). *J. Phycol.* 43, 485–496. doi: 10.1111/j.1529-8817.2007.00355.x
- Garcia Molinos, J., and Donohue, I. (2011). Temporal variability within disturbance events regulates their effects on natural communities. *Oecologia* 166, 795–806. doi: 10.1007/s00442-011-1923-2
- Gilbertson, W. W., Solan, M., and Prosser, J. I. (2012). Differential effects of microorganism-invertebrate interactions on benthic nitrogen cycling. *FEMS Microbiol. Ecol.* 82, 11–22. doi: 10.1111/j.1574-6941.2012.01400.x
- Glud, R. N. (2008). Oxygen dynamics of marine sediments. *Mar. Biol. Res.* 4, 243–289. doi: 10.1080/17451000801888726
- Gobet, A., B er, S. I., Huse, S. M., van Beusekom, J. E., Quince, C., Sogin, M. L., et al. (2012). Diversity and dynamics of rare and of resident bacterial populations in coastal sands. *ISME J.* 6, 542–553. doi: 10.1038/ismej.2011.132
- Godbold, J. A., and Solan, M. (2013). Long-term effects of warming and ocean acidification are modified by seasonal variation in species responses and environmental conditions. *Philos. Trans. R. Soc. Lond. B. Biol. Sci.* 368:20130186. doi: 10.1098/rstb.2013.0186
- Hicks, N., Bulling, M. T., Solan, M., Raffaelli, D., White, P. C., and Paterson, D. M. (2011). Impact of biodiversity-climate futures on primary production and metabolism in a model benthic estuarine system. *BMC Ecol.* 11:7. doi: 10.1186/1472-6785-11-7
- Hicks, N., Ubbara, G. R., Silburn, B., Smith, H. E. K., Kr ger, S., Parker, E. R., et al. (2017a). Oxygen dynamics in shelf seas sediments incorporating seasonal variability. *Biogeochemistry* 135, 35–47. doi: 10.1007/s10533-017-0326-9
- Hicks, N., Vik, U., Taylor, P., Ladoukakis, E., Park, J., Kolis, F., et al. (2017b). Using prokaryotes for carbon capture storage. *Trends Biotechnol.* 35, 22–32. doi: 10.1016/j.tibtech.2016.06.011
- Honeywill, C., Paterson, D., and Hagerthey, S. (2002). Determination of microphytobenthic biomass using pulse-amplitude modulated minimum fluorescence. *Eur. J. Phycol.* 37, 485–492. doi: 10.1017/S0967026202003888
- Hutchins, D. A., and Fu, F. (2017). Microorganisms and ocean global change. *Nat. Microbiol.* 2:17058. doi: 10.1038/nmicrobiol.2017.58
- Hutchins, D. A., Fu, F.-X., Webb, E. A., Walworth, N., and Tagliabue, A. (2013). Taxon-specific response of marine nitrogen fixers to elevated carbon dioxide concentrations. *Nat. Geosci.* 6, 790–795. doi: 10.1038/ngeo1858
- Ieno, E. N., Solan, M., Batty, P., and Pierce, G. J. (2006). How biodiversity affects ecosystem functioning: roles of infaunal species richness, identity and density in the marine benthos. *Mar. Ecol. Prog. Ser.* 311, 263–271. doi: 10.3354/meps311263
- IPCC (2014) "Climate Change 2014: Synthesis Report," in *Contribution of Working Groups I, II and III to the Fifth Assessment Report of the Intergovernmental Panel on Climate Change [Core Writing Team, R.K. Pachauri and L.A. Meyer (eds.)]* (Geneva: IPCC), 151.

- Kenworthy, J. M., Paterson, D. M., and Bishop, M. J. (2016). Response of benthic assemblages to multiple stressors: comparative effects of nutrient enrichment and physical disturbance. *Mar. Ecol. Prog. Ser.* 562, 37–51. doi: 10.3354/meps11935
- Kerfahi, D., Hall-Spencer, J. M., Tripathi, B. M., Milazzo, M., Lee, J., and Adams, J. M. (2014). Shallow water marine sediment bacterial community shifts along a natural CO<sub>2</sub> gradient in the mediterranean sea off Vulcano, Italy. *Microb. Ecol.* 67, 819–828. doi: 10.1007/s00248-014-0368-7
- Kitidis, V., Laverock, B., McNeill, L. C., Beesley, A., Cummings, D., Tait, K., et al. (2011). Impact of ocean acidification on benthic and water column ammonia oxidation. *Geophys. Res. Lett.* 38:49095. doi: 10.1029/2011gl049095
- Kitidis, V., Tait, K., Nunes, J., Brown, I., Woodward, E. M. S., Harris, C., et al. (2017). Seasonal benthic nitrogen cycling in a temperate shelf sea: the Celtic Sea. *Biogeochemistry* 135, 1–17. doi: 10.1007/s10533-017-0311-3
- Kroeker, K. J., Kordas, R. L., Crim, R., Hendriks, I. E., Ramajo, L., Singh, G. S., et al. (2013). Impacts of ocean acidification on marine organisms: quantifying sensitivities and interaction with warming. *Global Change Biol.* 19, 1884–1896. doi: 10.1111/gcb.12179
- Laverock, B., Smith, C. J., Tait, K., Osborn, A. M., Widdicombe, S., and Gilbert, J. A. (2010). Bioturbating shrimp alter the structure and diversity of bacterial communities in coastal marine sediments. *ISME J.* 4, 1531–1544. doi: 10.1038/ismej.2010.86
- Lozupone, C., and Knight, R. (2005). UniFrac: a new phylogenetic method for comparing microbial communities. *Appl. Environ. Microbiol.* 71, 8228–8235. doi: 10.1128/AEM.71.12.8228-8235.2005
- Lozupone, C. A., and Knight, R. (2007). Global patterns in bacterial diversity. *Proc. Natl. Acad. Sci. U.S.A.* 104, 11436–11440. doi: 10.1073/pnas.0611525104
- Mahmoudi, N., Robeson, M. S., Castro, H. F., Fortney, J. L., Techtmann, S. M., Joyner, D. C., et al. (2015). Microbial community composition and diversity in Caspian Sea sediments. *FEMS Microbiol. Ecol.* 91, 1–11. doi: 10.1093/femsec/fiu013
- Main, C. E., Ruhl, H. A., Jones, D. O. B., Yool, A., Thornton, B., and Mayor, D. J. (2015). Hydrocarbon contamination affects deep-sea benthic oxygen uptake and microbial community composition. *Deep Sea Res. I* 100, 79–87. doi: 10.1016/j.dsr.2014.12.008
- Manh, H. D., Matsuo, Y., Katsuta, A., Matsuda, S., Shizuri, Y., and Kasai, H. (2008). Robiginitalea myxolifaciens sp. nov., a novel myxol-producing bacterium isolated from marine sediment, and emended description of the genus Robiginitalea. *Int. J. Syst. Evol. Microbiol.* 58(Pt 7), 1660–1664. doi: 10.1099/ijs.0.65598-0
- Massé, C., Meisterhans, G., Deflandre, B., Bachelet, G., Bourasseau, L., Bichon, S., et al. (2016). Bacterial and macrofaunal communities in the sediments of the West Gironde Mud Patch, Bay of Biscay (France). *Estuar. Coast. Shelf Sci.* 179, 189–200. doi: 10.1016/j.ecss.2016.01.011
- Mayor, D. J., Gray, N. B., Elver-Evans, J., Midwood, A. J., and Thornton, B. (2013). Metal-macrofauna interactions determine microbial community structure and function in copper contaminated sediments. *PLoS ONE* 8:e64940. doi: 10.1371/journal.pone.0064940
- Mayor, D. J., Thornton, B., and Zuur, A. F. (2012). Resource quantity affects benthic microbial community structure and growth efficiency in a temperate intertidal mudflat. *PLoS ONE* 7:e38582. doi: 10.1371/journal.pone.0038582
- McDonald, D., Price, M. N., Goodrich, J., Nawrocki, E. P., DeSantis, T. Z., Probst, A., et al. (2012). An improved Greengenes taxonomy with explicit ranks for ecological and evolutionary analyses of bacteria and archaea. *ISME J.* 6, 610–618. doi: 10.1038/ismej.2011.139
- McKew, B. A., Dumbrell, A. J., Taylor, J. D., McGenity, T. J., and Underwood, G. J. (2013). Differences between aerobic and anaerobic degradation of microphytobenthic biofilm-derived organic matter within intertidal sediments. *FEMS Microbiol. Ecol.* 84, 495–509. doi: 10.1111/1574-6941.12077
- Middelburg, J. J. (2011). Chemoautotrophy in the ocean. *Geophys. Res. Lett.* 38. doi: 10.1029/2011gl049725
- Molinos, J. G., and Donohue, I. (2010). Interactions among temporal patterns determine the effects of multiple stressors. *Ecol. Appl.* 20, 1794–1800. doi: 10.1890/10-0018.1
- Moran, X. A., Alonso-Saez, L., Nogueira, E., Ducklow, H. W., González, N., Lopez-Urrutia, A., et al. (2015). More, smaller bacteria in response to ocean's warming? *Proc. Biol. Sci.* 282:20150371. doi: 10.1098/rspb.2015.0371
- Moss, J. A., Nocker, A., Lepo, J. E., and Snyder, R. A. (2006). Stability and change in estuarine biofilm bacterial community diversity. *Appl. Environ. Microbiol.* 72, 5679–5688. doi: 10.1128/AEM.02773-05
- Muntadas, A., de Juan, S., and Demestre, M. (2016). Assessing functional redundancy in chronically trawled benthic communities. *Ecol. Indic.* 61, 882–892. doi: 10.1016/j.ecolind.2015.10.041
- Musat, N., Werner, U., Knittel, K., Kolb, S., Dodenhof, T., van Beusekom, J. E., et al. (2006). Microbial community structure of sandy intertidal sediments in the North Sea, Sylt-Romo Basin, Badden Sea. *Syst. Appl. Microbiol.* 29, 333–348. doi: 10.1016/j.syapm.2005.12.006
- Orcutt, B. N., Sylvan, J. B., Knab, N. J., and Edwards, K. J. (2011). Microbial ecology of the dark ocean above, at, and below the seafloor. *Microbiol. Mol. Biol. Rev.* 75, 361–422. doi: 10.1128/MMBR.00039-10
- Pendleton, L. H., Hoegh-Guldberg, O., Langdon, C., and Comte, A. (2016). Multiple stressors and ecological complexity require a new approach to coral reef research. *Front. Mar. Sci.* 3:36. doi: 10.3389/fmars.2016.00036
- Petchey, O. L., and Gaston, K. J. (2006). Functional diversity: back to basics and looking forward. *Ecol. Lett.* 9, 741–758. doi: 10.1111/j.1461-0248.2006.00924.x
- Pikuta, E. V., Hoover, R. B., and Tang, J. (2007). Microbial extremophiles at the limits of life. *Crit. Rev. Microbiol.* 33, 183–209. doi: 10.1080/10408410701451948
- Probandt, D., Knittel, K., Tegetmeyer, H. E., Ahmerkamp, S., Holtappels, M., and Amann, R. (2017). Permeability shapes bacterial communities in sublittoral surface sediments. *Environ. Microbiol.* 19, 1584–1599. doi: 10.1111/1462-2920.13676
- Prosser, J. I., Bohannon, B. J. M., Curtis, T. P., Ellis, R. J., Firestone, M. K., Freckleton, R. P., et al. (2007). Essay - The role of ecological theory in microbial ecology. *Nat. Rev. Microbiol.* 5, 384–392. doi: 10.1038/nrmicro1643
- Prosser, J. I., and Head, I. M. (2007). Microorganisms, macroorganisms and ecology. *FEMS Microbiol. Ecol.* 62, 133–134. doi: 10.1111/j.1574-6941.2007.00395.x
- R Development Core Team (2016). *R: A Language and Environment for Statistical Computing*. R Foundation for Statistical Computing. Vienna: R Development Core Team.
- Raulf, F. F., Fabricius, K., Uthicke, S., de Beer, D., Abed, R. M., and Ramette, A. (2015). Changes in microbial communities in coastal sediments along natural CO<sub>2</sub> gradients at a volcanic vent in Papua New Guinea. *Environ. Microbiol.* 17, 3678–3691. doi: 10.1111/1462-2920.12729
- Ravenschlag, K., Sahm, K., Knoblauch, C., Jørgensen, B. B., and Amann, R. (2000). Community structure, cellular rRNA content, and activity of sulfate-reducing bacteria in marine Arctic sediments. *Appl. Environ. Microbiol.* 66, 3592–3602. doi: 10.1128/AEM.66.8.3592-3602.2000
- Risgaard-Petersen, N., Nicolaisen, M. H., Revsbech, N. P., and Lomstein, B. A. (2004). Competition between ammonia-oxidizing bacteria and benthic microalgae. *Appl. Environ. Microbiol.* 70, 5528–5537. doi: 10.1128/AEM.70.9.5528-5537
- Rosselli, R., Romoli, O., Vitolo, N., Vezzi, A., Campanaro, S., De Pascale, F., et al. (2016). Direct 16S rRNA-seq from bacterial communities: a PCR-independent approach to simultaneously assess microbial diversity and functional activity potential of each taxon. *Sci. Rep.* 6:32165. doi: 10.1038/srep32165
- Salter, S. J., Cox, M. J., Turek, E. M., Calus, S. T., Cookson, W. O., Moffatt, M. F., et al. (2014). Reagent and laboratory contamination can critically impact sequence-based microbiome analyses. *BMC Biol.* 12:87. doi: 10.1186/s12915-014-0087-z
- Sambrook, J., Fritsch, E. F., and Maniatis, T. (1989). *Molecular Cloning: A Laboratory Manual*. Cold Springs Harbour, NY: Cold Springs Harbour Laboratory Press.
- Santoro, A. E., Francis, C. A., de Sieyes, N. R., and Boehm, A. B. (2008). Shifts in the relative abundance of ammonia-oxidizing bacteria and archaea across physicochemical gradients in a subterranean estuary. *Environ. Microbiol.* 10, 1068–1079. doi: 10.1111/j.1462-2920.2007.01547.x
- Sebastian, M., and Gasol, J. M. (2013). Heterogeneity in the nutrient limitation of different bacterioplankton groups in the Eastern Mediterranean Sea. *ISME J.* 7, 1665–1668. doi: 10.1038/ismej.2013.42
- Sinkko, H., Lukkari, K., Jama, A. S., Sihvonen, L. M., Sivonen, K., Leivuori, M., et al. (2011). Phosphorus chemistry and bacterial community composition interact in brackish sediments receiving agricultural discharges. *PLoS ONE* 6:e21555. doi: 10.1371/journal.pone.0021555

- Sokal, R., and Michener, C. (1958). A statistical method for evaluating systematic relationships. *Univ. Kansas Sci. Bull.* 38, 1409–1438.
- Sweetman, A. K., Norling, K., Gunderstad, C., Haugland, B. T., and Dale, T. (2014). Benthic ecosystem functioning beneath fish farms in different hydrodynamic environments. *Limnol. Oceanogr.* 59, 1139–1151. doi: 10.4319/lo.2014.59.4.1139
- Tait, K., Laverock, B., and Widdicombe, S. (2013). Response of an arctic sediment nitrogen cycling community to increased CO<sub>2</sub>. *Estuaries Coasts.* 37, 724–735. doi: 10.1007/s12237-013-9709-x
- Tait, K., Stahl, H., Taylor, P., and Widdicombe, S. (2015). Rapid response of the active microbial community to CO<sub>2</sub> exposure from a controlled sub-seabed CO<sub>2</sub> leak in Ardmucknish Bay (Oban, Scotland). *Int. J. Greenhouse Gas Control* 38, 171–181. doi: 10.1016/j.ijggc.2014.11.021
- Taylor, J. D., McKew, B. A., Kuhl, A., McGenity, T. J., and Underwood, G. J. C. (2013). Microphytobenthic extracellular polymeric substances (EPS) in intertidal sediments fuel both generalist and specialist EPS-degrading bacteria. *Limnol. Oceanogr.* 58, 1463–1480. doi: 10.4319/lo.2013.58.4.1463
- Teeling, H., Fuchs, B. M., Becher, D., Klockow, C., Gardebrecht, A., Bennke, C. M., et al. (2012). Substrate-controlled succession of marine bacterioplankton populations induced by a phytoplankton bloom. *Science* 336, 608–611. doi: 10.1126/science.1218344
- Vázquez-Domínguez, E., Vaqué, D., and Gasol, J. M. (2012). Temperature effects on the heterotrophic bacteria, heterotrophic nanoflagellates, and microbial top predators of the NW Mediterranean. *Aquat. Microb. Ecol.* 67, 107–121. doi: 10.3354/ame01583
- Vitousek, P. M., Mooney, H. A., Lubchenco, J., and Melillo, J. M. (1997). Human domination of Earth's ecosystems (vol 277, pg 494, 1997). *Science* 278, 21–21.
- Wang, Q., Garrity, G. M., Tiedje, J. M., and Cole, J. R. (2007). Naive Bayesian classifier for rapid assignment of rRNA sequences into the new bacterial taxonomy. *Appl. Environ. Microbiol.* 73, 5261–5267. doi: 10.1128/AEM.00062-07

**Conflict of Interest Statement:** The authors declare that the research was conducted in the absence of any commercial or financial relationships that could be construed as a potential conflict of interest.

Copyright © 2018 Hicks, Liu, Gregory, Kenny, Lucaci, Lenzi, Paterson and Duncan. This is an open-access article distributed under the terms of the Creative Commons Attribution License (CC BY). The use, distribution or reproduction in other forums is permitted, provided the original author(s) and the copyright owner(s) are credited and that the original publication in this journal is cited, in accordance with accepted academic practice. No use, distribution or reproduction is permitted which does not comply with these terms.